

2026-05-30

Time of Issue: 08:10:00 hours IST
(Morning)

ALL INDIA WEATHER SUMMARY AND FORECAST BULLETIN

Significant Weather Features

Advance of Southwest Monsoon 2026:

- The Northern Limit of Monsoon continue to pass through 9°N/60°E, 8.5°N/65°E, 8°N/70°E, 7.5°N/75°E, 8°N/80°E, 11°N/85°E, 15°N/90°E, 19°N/95°E and 21°N/97°E.
- Conditions are favourable for further advance of southwest monsoon into some more parts of southwest & southeast Arabian Sea, Lakshadweep area, southwest, eastcentral & westcentral Bay of Bengal, remaining parts of southeast Bay of Bengal and some parts of northeast Bay of Bengal during next 2-3 days.

Weather Forecast and Warnings:

Northeast India:

- **Scattered to Fairly widespread light to moderate rainfall likely over the region during the week.**
- **Isolated heavy rainfall** likely over Arunachal Pradesh during 01st – 04th June, Assam & Meghalaya during 02nd – 04th June; Nagaland, Manipur, Mizoram & Tripura during 31st May- 3rd June.

South Peninsular India:

- **Isolated to scattered** light to moderate rainfall with **thunderstorm, lightning & gusty winds (speed reaching 40-50 kmph)** likely over Tamil Nadu, Puducherry & Karaikal, North Interior Karnataka, Coastal Andhra Pradesh & Yanam, Rayalaseema, Telangana 30th May – 02nd June; South Interior Karnataka on 30th May.
- **Thundersquall (wind speed reaching 50-60 kmph gusting to 70 kmph)** likely over Coastal Andhra Pradesh & Yanam, Rayalaseema during 30th -31st May.
- **Isolated heavy rainfall** likely over Tamil Nadu, Puducherry & Karaikal during 30th May -01st June; Kerala & Mahe, Lakshadweep during 31st May-4th June; Coastal Andhra Pradesh & Yanam during 30th – 31st May; Rayalaseema on 30th May

East India:

- **Fairly widespread to widespread** light to moderate rainfall with **thunderstorm, lightning & gusty winds (speed reaching 40-50 kmph)** likely over Andaman & Nicobar Islands during 30th May-04th June; Sub-Himalayan West Bengal & Sikkim during 2nd-4th June.
- **Isolated to scattered** light to moderate rainfall with **thunderstorm, lightning & gusty winds (speed reaching 40-50 kmph)** likely over Gangetic West Bengal on 30th May; Jharkhand, Odisha during 31st May-04th June; Bihar on 31st May; Odisha during 31st May – 02nd June;
- **Thundersquall (wind speed reaching 60-70 kmph gusting to 80 kmph)** likely over Odisha on 30th May.
- **Thundersquall (wind speed reaching 50-60 kmph gusting to 70 kmph)** likely over Jharkhand, Bihar on 30th May.
- **Isolated heavy to very heavy rainfall likely** over Andaman & Nicobar Islands, Odisha, Bihar on 30th May.

Northwest India:

- **Scattered to fairly widespread** light to moderate rainfall with **thunderstorm, lightning & gusty winds (speed reaching 40-50 kmph)** likely over Jammu-Kashmir, Uttarakhand, Himachal Pradesh on 30th May.
- **Scattered to fairly widespread** light to moderate rainfall with **thunderstorm, lightning & gusty winds (speed reaching 40-50 kmph)** likely over Uttar Pradesh on 31st May; Rajasthan during 31st May- 02nd June.
- **Thundersquall (wind speed reaching 60-70 kmph gusting to 80 kmph)** likely Punjab, Haryana Chandigarh & Delhi, Rajasthan on 30th May;
- **Thundersquall (wind speed reaching 50-60 kmph gusting to 70 kmph)** likely over Uttar Pradesh on 30th May.
- **Isolated heavy rainfall** likely over West Uttar Pradesh on 30th May.

*Red color warning does not mean "Red Alert" Red color warning means "Take Action"

Forecast and warning for any day is valid from 0830 hours IST of day till 0830 hours IST of next day

For more details kindly visit <https://mausam.imd.gov.in> or contact 011-2434-4599

(Service to the nation since 1875)

- **Isolated Hailstorm activity** likely over Punjab, Haryana Chandigarh & Delhi, Rajasthan on 30th May.
- **Duststorm** very likely at isolated places over West Rajasthan during 30th May – 02nd June; East Rajasthan on 30th May

Central India:

- **Isolated** light to moderate rainfall with **thunderstorm, lightning & gusty winds (speed reaching 40-50 kmph)** likely over Madhya Pradesh, Chhattisgarh 01st & 2nd June; Vidarbha 02nd June;
- **Thundersquall (wind speed reaching 50-60 kmph gusting to 70 kmph)** likely over Madhya Pradesh, Chhattisgarh during 30th – 31st May; Vidarbha during 30th – 01st June.
- **Isolated heavy rainfall** likely over West Madhya Pradesh on 31st May & 01st June.
- **Isolated Hailstorm activity** likely over Madhya Pradesh, Chhattisgarh on 30th May; Vidarbha on 30th & 31st May.

West India:

- **Isolated** light to moderate rainfall with **thunderstorm, lightning & gusty winds (speed reaching 40-50 kmph)** likely over Konkan & Goa during 31st May–04th June; Madhya Maharashtra during 30th May – 03rd June; Marathwada during 31st May – 03rd; Gujarat state during 30th May – 04th June.
- **Isolated heavy rainfall** likely over Gujarat Region during 31st May – 2nd June.

Forecast of maximum/day temperatures:

- **Gradual fall** in maximum temperatures **by 5-7°C** likely over Northwest India **till 30th May and gradual rise by 5-7°C during 31st May-04th June.**
- No significant change in maximum temperatures likely over Central India till 30th May and gradual fall by 3-5°C during 30th May-04th June
- No significant change in maximum temperatures likely over Maharashtra State till 30th May and gradual fall by 2-3°C during 31st May-04th June.
- Gradual fall by 3-5°C in maximum temperatures likely over Gujarat State till 4th June.
- No significant change in maximum temperatures likely over the rest parts of country till 04th June 2026.

Heat Wave, Hot & Humid weather and Warm Night conditions warning:

- **Heat wave conditions** very likely in isolated/some pockets over Telangana, West Madhya Pradesh on 30th May

Fisherman Warning:

Fishermen are advised not to venture into the following areas:

- **Bay of Bengal:** Over Gulf of Mannar & adjoining Comorin area, along and off Tamil Nadu & Sri Lanka Coasts, over many parts of south & adjoining central Bay of Bengal, over south & adjoining north Andaman Sea during 30th May to 03rd June, 2026.
- **Arabian Sea:** Along & off north Gujarat coast and adjoining northeast Arabian Sea during 30th May to 31st May, 2026; along & off Oman coast adjoining parts of northwest & westcentral Arabian sea on 02nd June.
- Along and off Somalia coast, adjoining some parts of southwest Arabian Sea during on 30th May to 03rd June, 2026

Main Weather Observations:

❖ **Rainfall distribution** (from 0830 hours IST of yesterday to 0530 hours IST of today): **at most places** over Uttarakhand, Himachal Pradesh, Sub-himalayan West Bengal & Sikkim, Kerala & Mahe, Gangetic West Bengal, Coastal Karnataka, Odisha and Andaman & Nicobar Islands; **at many places** over Assam & Meghalaya, East Madhya Pradesh, East Rajasthan, West Rajasthan, Jammu & Kashmir and Ladakh, Haryana Chandigarh & Delhi, West Madhya Pradesh, West Uttar Pradesh, East Uttar Pradesh, Jharkhand, Nagaland, Manipur, Mizoram & Tripura, South Interior Karnataka, Bihar, Tamilnadu Puducherry & Karaikal and Coastal Andhra Pradesh & Yanam; **Dry** over rest of the country.

❖ **Significant rainfall recorded(in cm)** (from 0830 hours IST of yesterday to 0530 hours IST of today): **Bihar:** Motihari (dist East Champaran) 12, Bhagalpur, Sabaur (dist Bhagalpur) 4 Each, Muzaffarpur-obs (dist Muzaffarpur) 3, Purnea (dist Purnia) 2, Patna-airport (dist Patna), Gaya (dist Gaya) 1 Each; **Uttarakhand:** Dehra Dun-mokampur (dist Dehradun) 7; **South Interior Karnataka:** Bengaluru (dist Bengaluru Urban) 5; **Kerala & Mahe:** Urumi 11, Ernakulam 9, Thrissur 7, Kozhikode (calicut) (dist Kozhikode) 4; **Gangetic West Bengal:** Kolkata-alipur (dist Kolkata) 4, Kolkata (dum Dum) AP (dist North 24 Parganas), Diamond Harbour (dist South 24 Parganas) 2 Each; **Coastal Karnataka:** Mangalore (bajpe) AP (dist Dakshina Kannada) 4; **Bihar:** Bhagalpur (dist Bhagalpur) 4; **Odisha:** Bhubaneshwar (dist Khordha), Paradip Port (dist Jagatsinghapur) 2 Each.

❖ **Heavy Rainfall observed** (from 0830 hours IST of yesterday to 0530 hours IST of today): **Heavy to very heavy rain** at isolated places over Bihar; **Heavy rain** at isolated places over Uttarakhand, Kerala.

❖ Yesterday, **Heat wave conditions prevailed** at isolated places over Vidarbha, West Rajasthan.

❖ **Minimum Temperature Departures (as on 29-05-2026): markedly above normal(> 5.1°C)** at few places over East Madhya Pradesh; at isolated places over Assam & Meghalaya, Odisha, West Uttar Pradesh, Himachal Pradesh, West Rajasthan, West Madhya Pradesh, Gujarat Region and Saurashtra & Kutch. **appreciably above normal(3.1°C to 5.0°C)** at few places over Rayalaseema; at isolated places over Assam & Meghalaya, Nagaland, Manipur, Mizoram & Tripura, Odisha, Bihar, Jammu-KashmirLadakh-Gilgit-Baltistan-Muzaffarabad, West Rajasthan, East Rajasthan, West Madhya Pradesh, Saurashtra & Kutch, Konkan & Goa, Vidarbha and Tamil Nadu, Puducherry & Karaikal. **above normal(1.6°C to 3.0°C)** at many places over Marathwada and Lakshadweep; at few places over Gangetic West Bengal, Himachal Pradesh, Konkan & Goa, Chhattisgarh, Tamil Nadu, Puducherry & Karaikal and South Interior Karnataka; at isolated places over Andaman & Nicobar Islands, Assam & Meghalaya, Nagaland, Manipur, Mizoram & Tripura, Sub Himalayan West Bengal & Sikkim, Odisha, Jharkhand, Bihar, West Uttar Pradesh, Uttarakhand, Punjab, Jammu-KashmirLadakh-Gilgit-Baltistan-Muzaffarabad, West Madhya Pradesh, East Madhya Pradesh, Gujarat Region, Saurashtra & Kutch, Madhya Maharashtra, Vidarbha, Coastal Andhra Pradesh & Yanam, Telangana and North Interior Karnataka. **near normal(-1.5°C to 1.5°C)** at many places over Andaman & Nicobar Islands, Assam & Meghalaya, Gangetic West Bengal, Odisha, Jharkhand, Jammu-KashmirLadakh-Gilgit-Baltistan-Muzaffarabad, West Rajasthan, East Rajasthan, Gujarat Region, Saurashtra & Kutch, Madhya Maharashtra, Tamil Nadu, Puducherry & Karaikal, North Interior Karnataka and South Interior Karnataka; at most places over Arunachal Pradesh, Sub Himalayan West Bengal & Sikkim, Vidarbha, Coastal Karnataka and Kerala & Mahe; at few places over Nagaland, Manipur, Mizoram & Tripura, Bihar, East Uttar Pradesh, West Uttar Pradesh, Haryana-Chandigarh-Delhi, Punjab, Himachal Pradesh, West Madhya Pradesh, Konkan & Goa, Marathwada, Chhattisgarh, Telangana and Lakshadweep; at isolated places over East Madhya Pradesh, Coastal Andhra Pradesh & Yanam and Rayalaseema. **The lowest minimum temperature of 20.4°C was reported at KEONGJHARGARH (ODISHA) over the Plains of India.**

❖ **Maximum Temperature Departures (as on 29-05-2026): markedly above normal(> 5.1°C)** at isolated places over Assam & Meghalaya, West Uttar Pradesh, Himachal Pradesh, Jammu-KashmirLadakh-Gilgit-Baltistan-Muzaffarabad and East Madhya Pradesh. **appreciably above normal(3.1°C to 5.0°C)** at few places over Arunachal Pradesh and West Madhya Pradesh; at isolated places over Gangetic West Bengal, West Rajasthan, Madhya Maharashtra, Coastal Andhra Pradesh & Yanam, Telangana and Tamil Nadu, Puducherry & Karaikal. **above normal(1.6°C to 3.0°C)** at many places over Nagaland, Manipur, Mizoram & Tripura and Konkan & Goa; at few places over Sub Himalayan West Bengal & Sikkim, Vidarbha and Lakshadweep; at isolated places over Odisha, East Uttar Pradesh, Gujarat Region, Saurashtra & Kutch and Chhattisgarh. **near normal(-1.5°C to 1.5°C)** at many places over Andaman & Nicobar Islands; at most places over Marathwada, Rayalaseema, Coastal Karnataka, North Interior Karnataka, South Interior Karnataka and Kerala & Mahe; at few places over East Rajasthan; at isolated places over Jharkhand and Bihar. **The highest**

***Red color warning does not mean "Red Alert" Red color warning means "Take Action"**

Forecast and warning for any day is valid from 0830 hours IST of day till 0830 hours IST of next day

For more details kindly visit <https://mausam.imd.gov.in> or contact 011-2434-4599

(Service to the nation since 1875)



maximum temperature of 46.0°C was reported at RAJNANDGAON (CHHATTISGARH).

Meteorological Analysis (Based on 0530 hours IST)

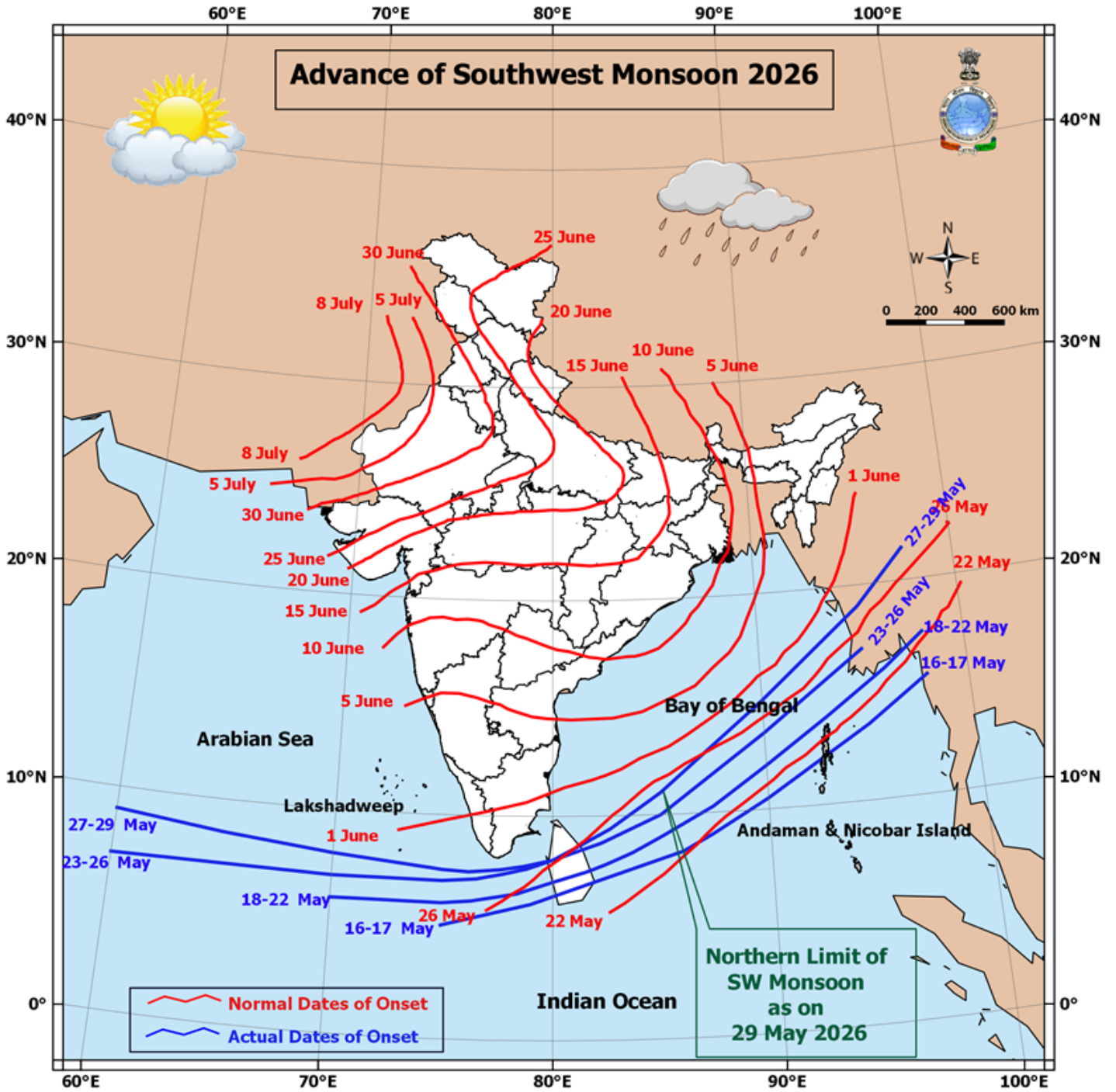
- The Northern Limit of Monsoon continues to pass through 9°N/60°E, 8.5°N/65°E, 8°N/70°E, 7.5°N/75°E, 8°N/80°E, 11°N/85°E, 15°N/90°E, 19°N/95°E and 21°N/97°E.
- Conditions are favourable for further advance of southwest monsoon into some more parts of southwest & southeast Arabian Sea, Lakshadweep area, southwest, east central & westcentral Bay of Bengal, remaining parts of southeast Bay of Bengal and some parts of northeast Bay of Bengal during next 2-3 days.
- The Western Disturbance as a trough in middle tropospheric westerlies with its axis at 5.8 km above mean sea level now runs roughly along Long. 78°E to the north of Lat. 30°N.
- The upper air cyclonic circulation over Central Pakistan & neighbourhood and extending upto 1.5 km above mean sea level persists.
- The trough from the cyclonic circulation over Central Pakistan to northeast Arabian sea across West Rajasthan, Saurashtra & Kutch at 0.9 km above men sea level persists.
- The trough from the cyclonic circulation over Central Pakistan to interior Odisha across Rajasthan, Madhya Pradesh, north Chhattisgarh at 0.9 km above mean sea level persists.
- The trough in westerlies with its axis at 5.8 km above mean sea level roughly along Long. 90°E to the north of Lat. 21°N persists.
- The upper air cyclonic circulation over Southwest Bay of Bengal and adjoining Tamil Nadu coast between 3.1 & 5.8 km above mean sea level persists.
- The upper air cyclonic circulation over Southeast Arabian Sea & neighbourhood extending upto 5.8 km above mean sea level persists.
- The upper air cyclonic circulation over Eastcentral & Southeast Bay of Bengal between 1.5 & 7.6 km above mean sea level persists.
- The upper air cyclonic circulation over east Bangladesh & neighbourhood at 1.5 km above mean sea level has become less marked.
- The upper air cyclonic circulation over central Assam & neighbourhood at 3.1 km above mean sea level has become less marked.

***Red color warning does not mean "Red Alert" Red color warning means "Take Action"**

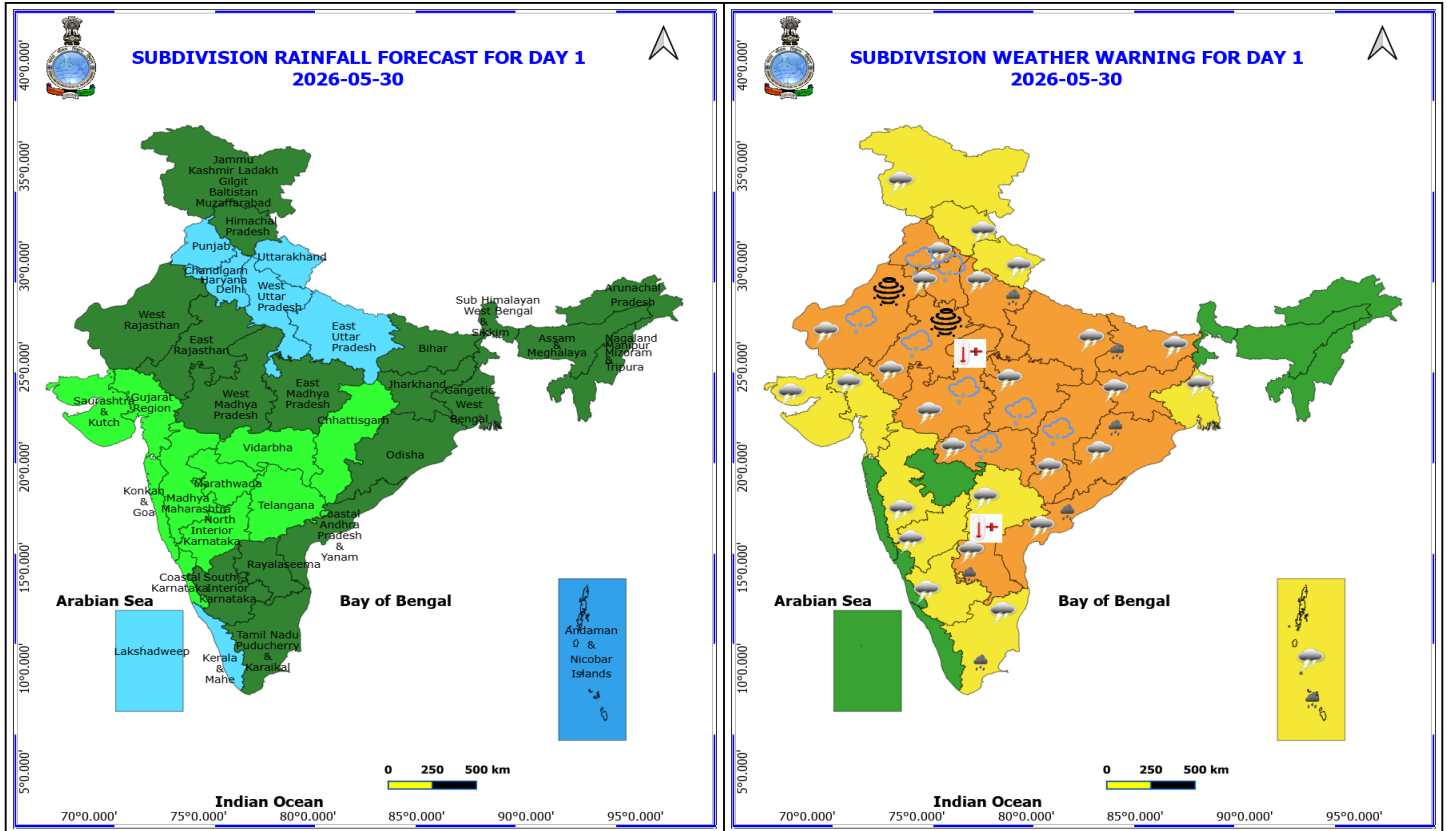
Forecast and warning for any day is valid from 0830 hours IST of day till 0830 hours IST of next day

For more details kindly visit <https://mausam.imd.gov.in> or contact 011-2434-4599

(Service to the nation since 1875)



*Red color warning does not mean "Red Alert" Red color warning means "Take Action"
Forecast and warning for any day is valid from 0830 hours IST of day till 0830 hours IST of next day
For more details kindly visit <https://mausam.imd.gov.in> or contact 011-2434-4599
(Service to the nation since 1875)



30 May (Day 1)

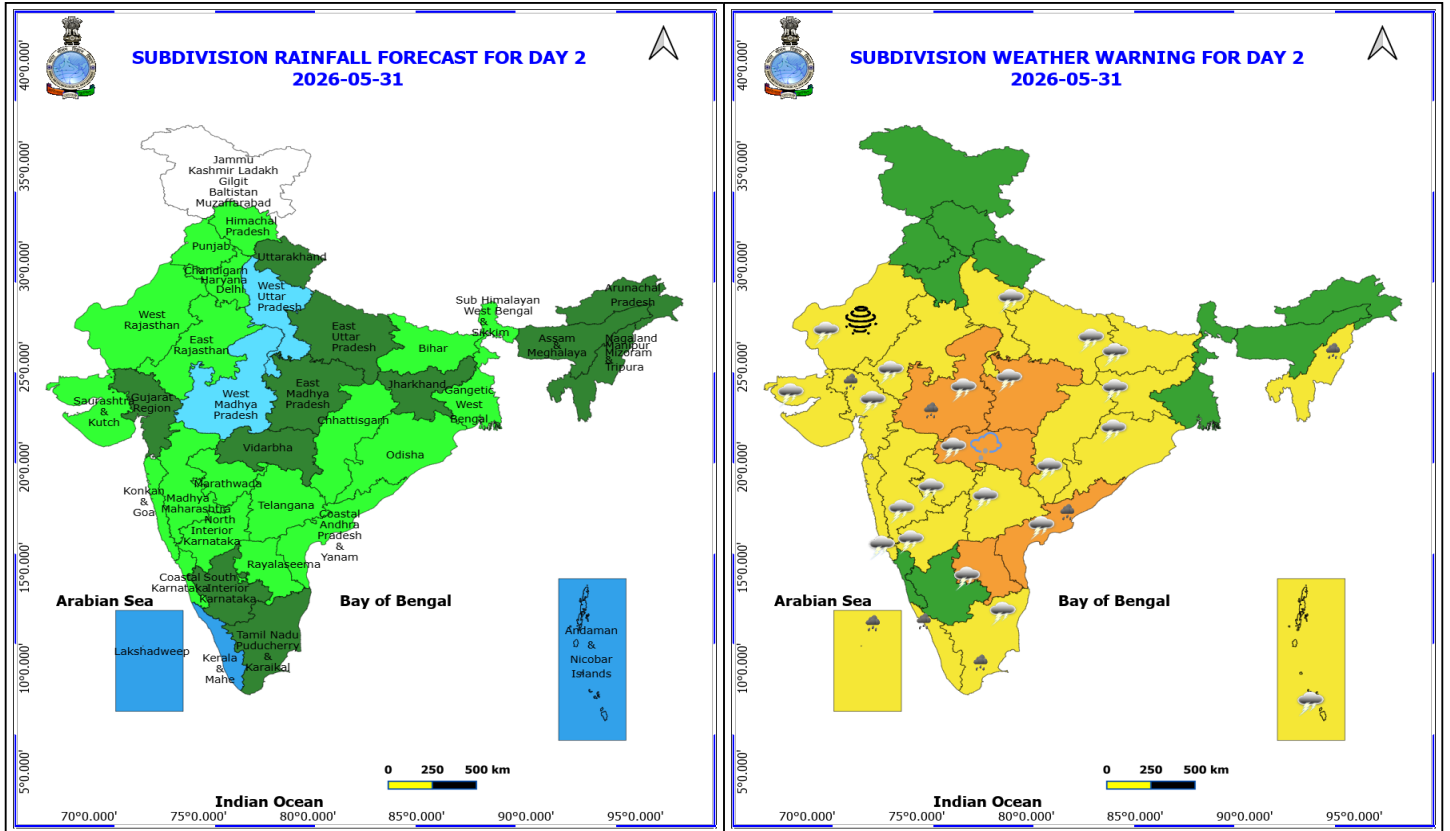
- ❖ **Heavy Rainfall** very likely at isolated places over Andaman & Nicobar Islands, Andhra Pradesh, Bihar, Odisha, Tamil Nadu Puducherry & Karaikal and West Uttar Pradesh.
- ❖ **Thunderstorm accompanied with Hailstorm** very likely at isolated places over Chhattisgarh, Haryana, Chandigarh & Delhi, Madhya Pradesh, Punjab, Rajasthan and Vidarbha.
- ❖ **Thundersquall with wind speed reaching(60-70kmph) gusting to 80 kmph** very likely at isolated places over Haryana, Chandigarh & Delhi, Odisha, Punjab and Rajasthan.
- ❖ **Thundersquall with wind speed reaching(50-60kmph)** very likely at isolated places over Andhra Pradesh, Bihar, Chhattisgarh, Jharkhand, Madhya Pradesh, Uttar Pradesh and Vidarbha.
- ❖ **Thunderstorm accompanied with lightning & gusty winds(40-50kmph)** very likely at isolated places over Andaman & Nicobar Islands, Gangetic West Bengal, Gujarat State, Himachal Pradesh, Interior Karnataka, Jammu-Kashmir-Ladakh-Gilgit-Baltistan-Muzaffarabad, Madhya Maharashtra, Tamil Nadu Puducherry & Karaikal, Telangana and Uttarakhand.
- ❖ **Thunderstorm accompanied with lightning & gusty winds(30-40kmph)** very likely at isolated places over Kerala & Mahe, Lakshadweep and Sub Himalayan West Bengal & Sikkim.
- ❖ **Thunderstorm accompanied with Lightning** very likely at isolated places over Assam & Meghalaya, Coastal Karnataka and Nagaland, Manipur, Mizoram and Tripura.
- ❖ **Dust Storm** very likely at isolated places over Rajasthan.
- ❖ **Heat Wave conditions** very likely at isolated places over Telangana and West Madhya Pradesh.

***Red color warning does not mean "Red Alert" Red color warning means "Take Action"**
Forecast and warning for any day is valid from 0830 hours IST of day till 0830 hours IST of next day
For more details kindly visit <https://mausam.imd.gov.in> or contact 011-2434-4599

(Service to the nation since 1875)



- ❖ **Arabian Sea: Squally wind with speed 45-55 kmph gusting to 65 kmph** is likely to prevail along and off Somalia coast, adjoining parts of southwest Arabian Sea.
- ❖ **Squally Weather with wind speed 40-50 kmph gusting to 60 kmph** is likely to prevail over Comorin area.
- ❖ **Bay of Bengal: Squally Weather with wind speed 40-50 kmph gusting to 60 kmph** is likely to prevail over Gulf of Mannar, along and off Sri Lanka coasts, many parts of south & adjoining westcentral Bay of Bengal.



31 May (Day 2)

- ❖ **Heavy Rainfall** very likely at isolated places over Coastal Andhra Pradesh, Gujarat Region, Kerala & Mahe, Lakshadweep, Nagaland, Manipur, Mizoram and Tripura, Tamil Nadu Puducherry & Karaikal and West Madhya Pradesh.
 - ❖ **Thunderstorm accompanied with Hailstorm** very likely at isolated places over Vidarbha.
 - ❖ **Thundersquall with wind speed reaching(50-60kmph)** very likely at isolated places over Andhra Pradesh, Chhattisgarh, Madhya Pradesh and Vidarbha.
 - ❖ **Thunderstorm accompanied with lightning & gusty winds(40-50kmph)** very likely at isolated places over Andaman & Nicobar Islands, Bihar, Gujarat State, Jharkhand, Konkan & Goa, Madhya Maharashtra, Marathwada, North Interior Karnataka, Odisha, Rajasthan, Tamil Nadu Puducherry & Karaikal, Telangana and Uttar Pradesh.
 - ❖ **Thunderstorm accompanied with lightning & gusty winds(30-40kmph)** very likely at isolated places over Kerala & Mahe, Lakshadweep, South Interior Karnataka and Uttarakhand.
 - ❖ **Thunderstorm accompanied with Lightning** very likely at isolated places over Assam & Meghalaya, Coastal Karnataka and Nagaland, Manipur, Mizoram and Tripura.
 - ❖ **Dust Storm** very likely at isolated places over West Rajasthan.
-
- ❖ **Arabian Sea: Squally wind with speed 45-55 kmph gusting to 65 kmph** is likely to prevail along and off Somalia coast, adjoining parts of southwest Arabian Sea.
 - ❖ **Squally Weather with wind speed 40-50 kmph gusting to 60 kmph** is likely to prevail over Comorin area.

***Red color warning does not mean "Red Alert" Red color warning means "Take Action"**

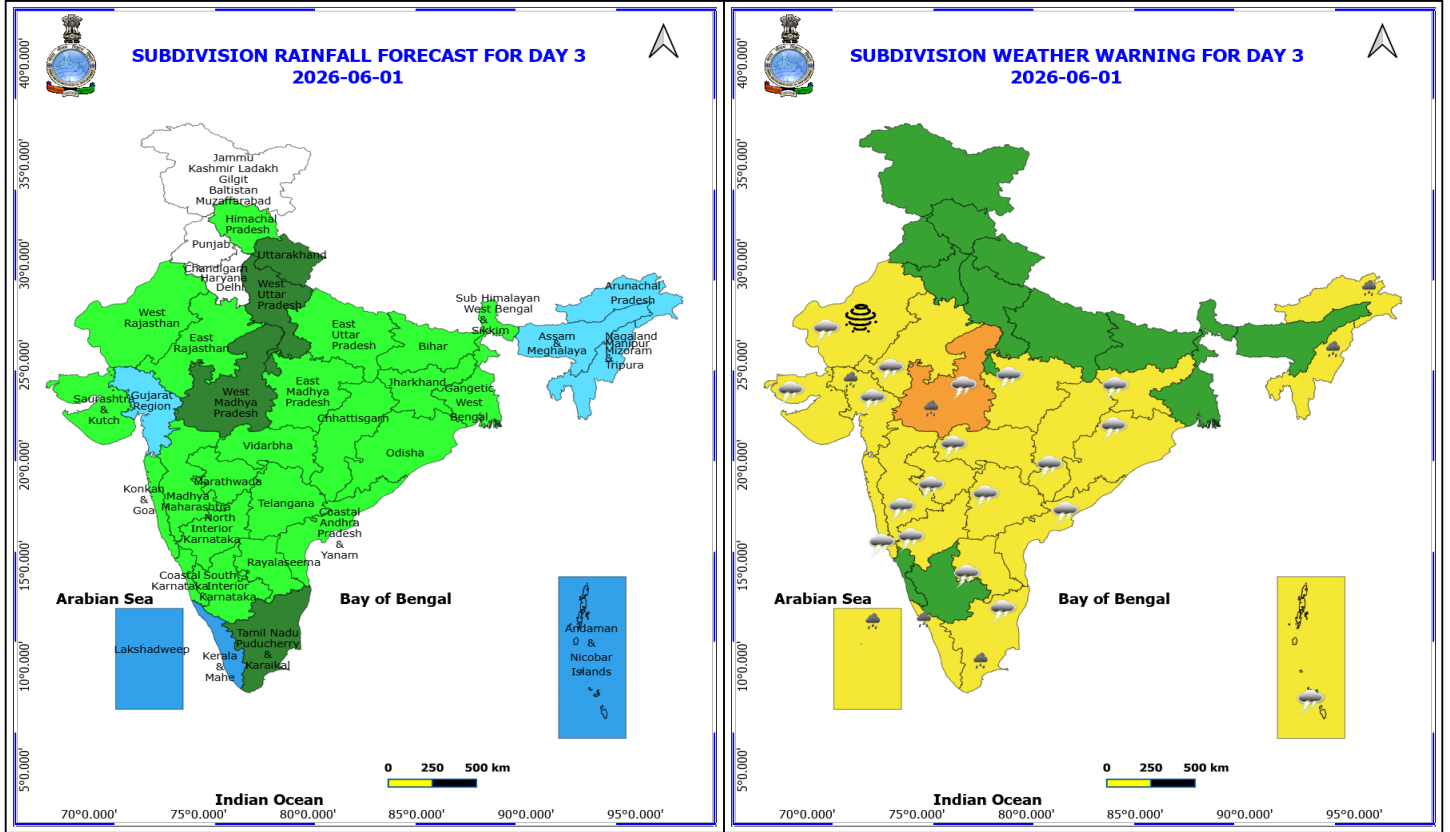
Forecast and warning for any day is valid from 0830 hours IST of day till 0830 hours IST of next day

For more details kindly visit <https://mausam.imd.gov.in> or contact 011-2434-4599

(Service to the nation since 1875)



❖ **Bay of Bengal: Squally Weather with wind speed 40-50 kmph gusting to 60 kmph** is likely to prevail over Gulf of Mannar, along and off Sri Lanka coasts, many parts of south & adjoining central Bay of Bengal, northwest Bay of Bengal, along & off Odisha & West Bengal coasts, south & adjoining north Andaman Sea.



1 June (Day 3)

- ❖ **Heavy Rainfall** very likely at isolated places over Arunachal Pradesh, Gujarat Region, Kerala & Mahe, Lakshadweep, Nagaland, Manipur, Mizoram and Tripura, Tamil Nadu Puducherry & Karaikal and West Madhya Pradesh.
 - ❖ **Thundersquall with wind speed reaching(50-60kmph)** very likely at isolated places over Vidarbha.
 - ❖ **Thunderstorm accompanied with lightning & gusty winds(40-50kmph)** very likely at isolated places over Andaman & Nicobar Islands, Andhra Pradesh, Chhattisgarh, Gujarat State, Jharkhand, Konkan & Goa, Madhya Maharashtra, Madhya Pradesh, Marathwada, North Interior Karnataka, Odisha, Rajasthan, Tamil Nadu Puducherry & Karaikal and Telangana.
 - ❖ **Thunderstorm accompanied with lightning & gusty winds(30-40kmph)** very likely at isolated places over Bihar, Kerala & Mahe, Lakshadweep, South Interior Karnataka and Uttarakhand.
 - ❖ **Thunderstorm accompanied with Lightning** very likely at isolated places over Arunachal Pradesh, Assam & Meghalaya, Coastal Karnataka and Nagaland, Manipur, Mizoram and Tripura.
 - ❖ **Dust Storm** very likely at isolated places over West Rajasthan.
-
- ❖ **Arabian Sea: Squally wind with speed 45-55 kmph gusting to 65 kmph** is likely to prevail along and off Somalia coast, adjoining parts of southwest Arabian Sea.
 - ❖ **Squally Weather with wind speed 40-50 kmph gusting to 60 kmph** is likely to prevail over Comorin area, along & off north Gujarat coast and adjoining northeast Arabian Sea.
 - ❖ **Bay of Bengal: Squally Weather with wind speed 40-50 kmph gusting to 60 kmph** is likely to prevail over Gulf

***Red color warning does not mean "Red Alert" Red color warning means "Take Action"**

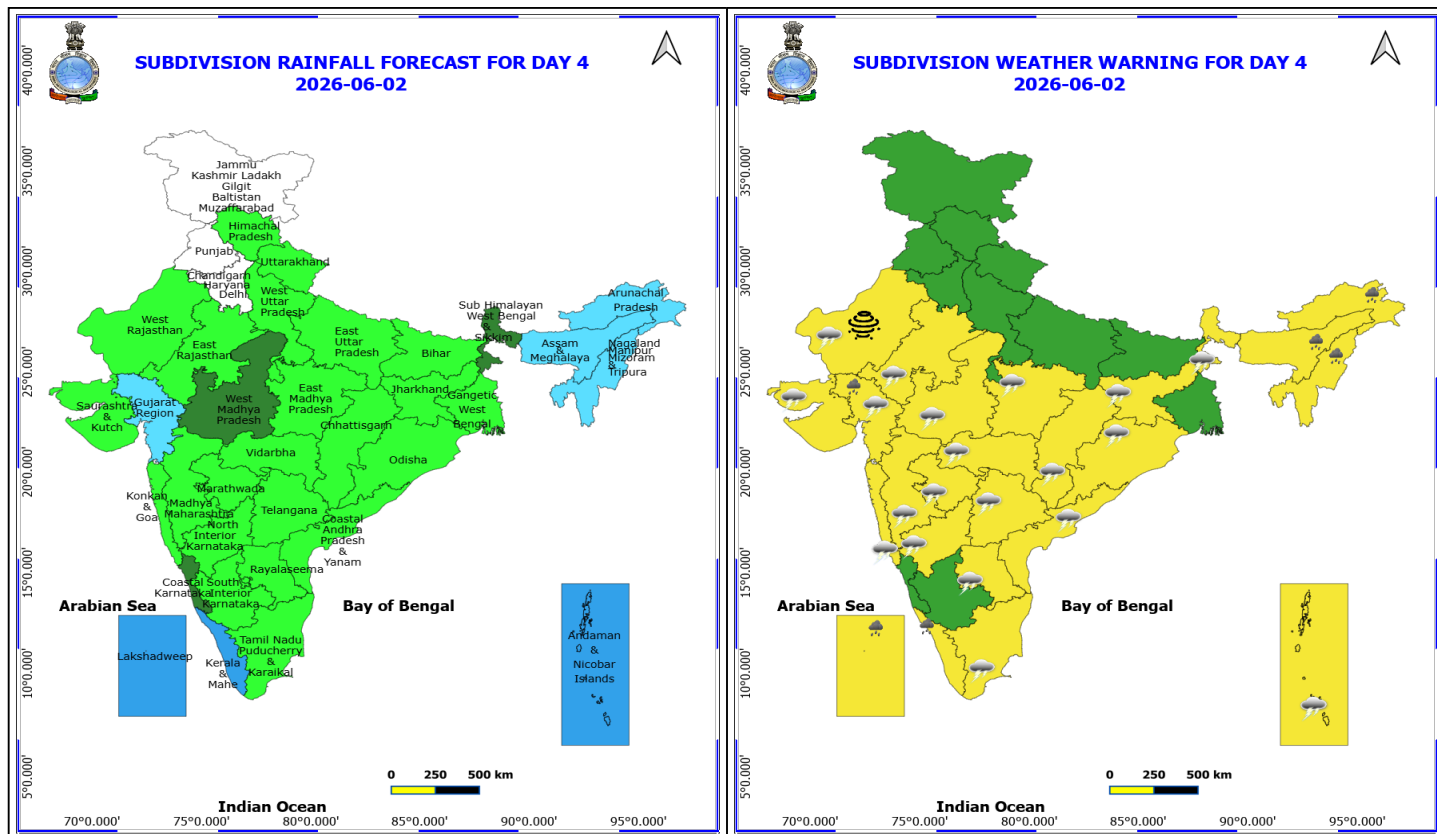
Forecast and warning for any day is valid from 0830 hours IST of day till 0830 hours IST of next day

For more details kindly visit <https://mausam.imd.gov.in> or contact 011-2434-4599

(Service to the nation since 1875)



of Mannar, along and off Sri Lanka coasts, many parts of south & adjoining central Bay of Bengal, northwest Bay of Bengal, along & off Odisha & West Bengal coasts, south & adjoining north Andaman Sea.



2 June (Day 4)

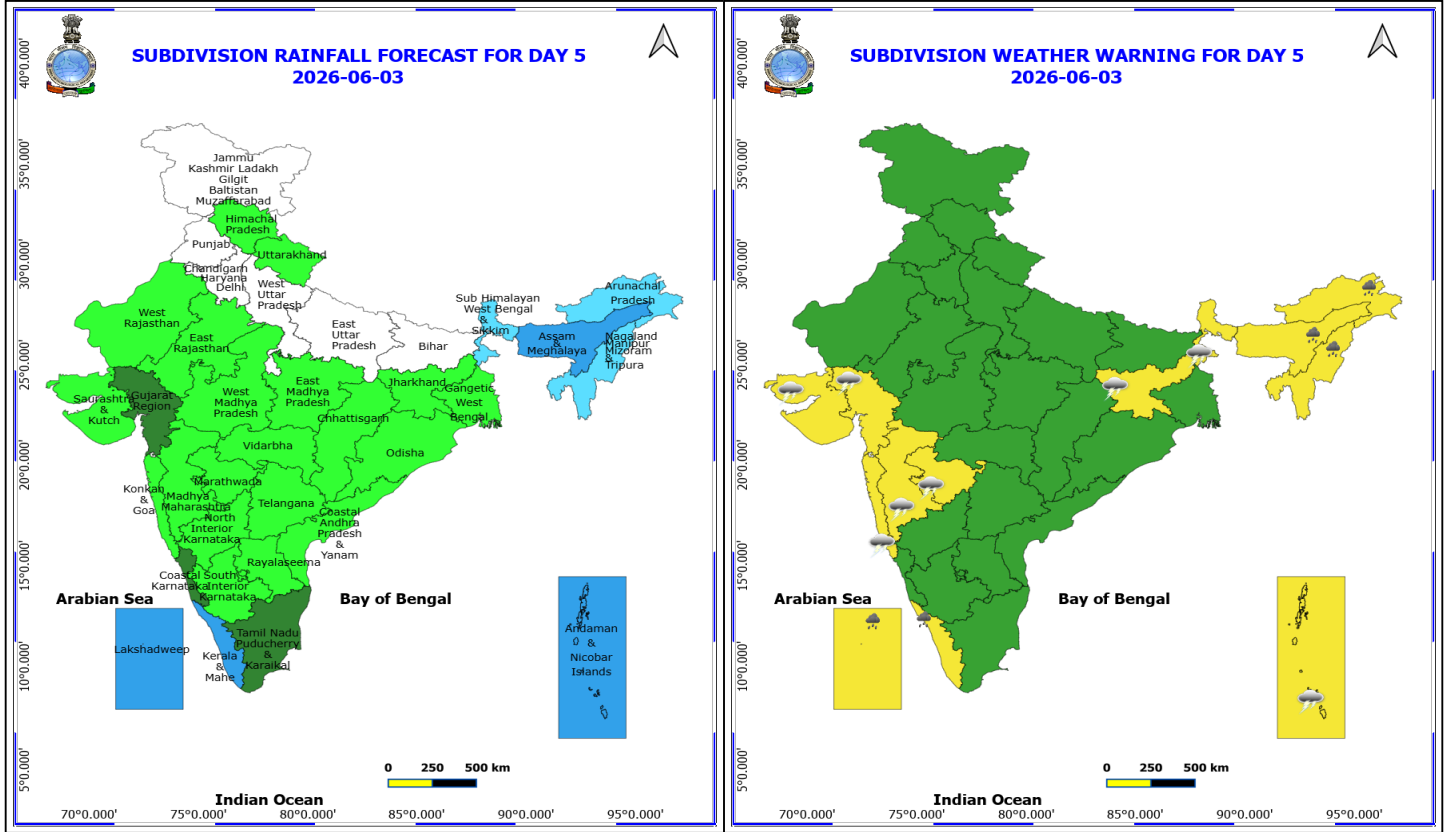
- ❖ **Heavy Rainfall** likely at isolated places over Arunachal Pradesh, Assam & Meghalaya, Gujarat Region, Kerala & Mahe, Lakshadweep and Nagaland, Manipur, Mizoram and Tripura.
 - ❖ **Thunderstorm accompanied with lightning & gusty winds(40-50kmph)** likely at isolated places over Andaman & Nicobar Islands, Andhra Pradesh, Chhattisgarh, Gujarat State, Jharkhand, Konkan & Goa, Madhya Pradesh, Maharashtra, North Interior Karnataka, Odisha, Rajasthan, Sub Himalayan West Bengal & Sikkim, Tamil Nadu Puducherry & Karaikal and Telangana.
 - ❖ **Thunderstorm accompanied with lightning & gusty winds(30-40kmph)** likely at isolated places over Bihar, Kerala & Mahe, Lakshadweep and South Interior Karnataka.
 - ❖ **Thunderstorm accompanied with Lightning** likely at isolated places over Arunachal Pradesh, Assam & Meghalaya, Coastal Karnataka and Nagaland, Manipur, Mizoram and Tripura.
 - ❖ **Dust Storm** likely at isolated places over West Rajasthan.
-
- ❖ **Arabian Sea: Squally wind with speed 45-55 kmph gusting to 65 kmph** is likely to prevail along and off Somalia coast, adjoining parts of southwest Arabian Sea.
 - ❖ **Squally Weather with wind speed 40-50 kmph gusting to 60 kmph** is likely to prevail over Comorin area, along & off north Gujarat coast and adjoining northeast Arabian Sea.
 - ❖ **Bay of Bengal: Squally Weather with wind speed 40-50 kmph gusting to 60 kmph** is likely to prevail over Gulf of Mannar, along and off Sri Lanka coasts, many parts of south & adjoining central Bay of Bengal, south & adjoining north Andaman Sea.

***Red color warning does not mean "Red Alert" Red color warning means "Take Action"**

Forecast and warning for any day is valid from 0830 hours IST of day till 0830 hours IST of next day

For more details kindly visit <https://mausam.imd.gov.in> or contact 011-2434-4599

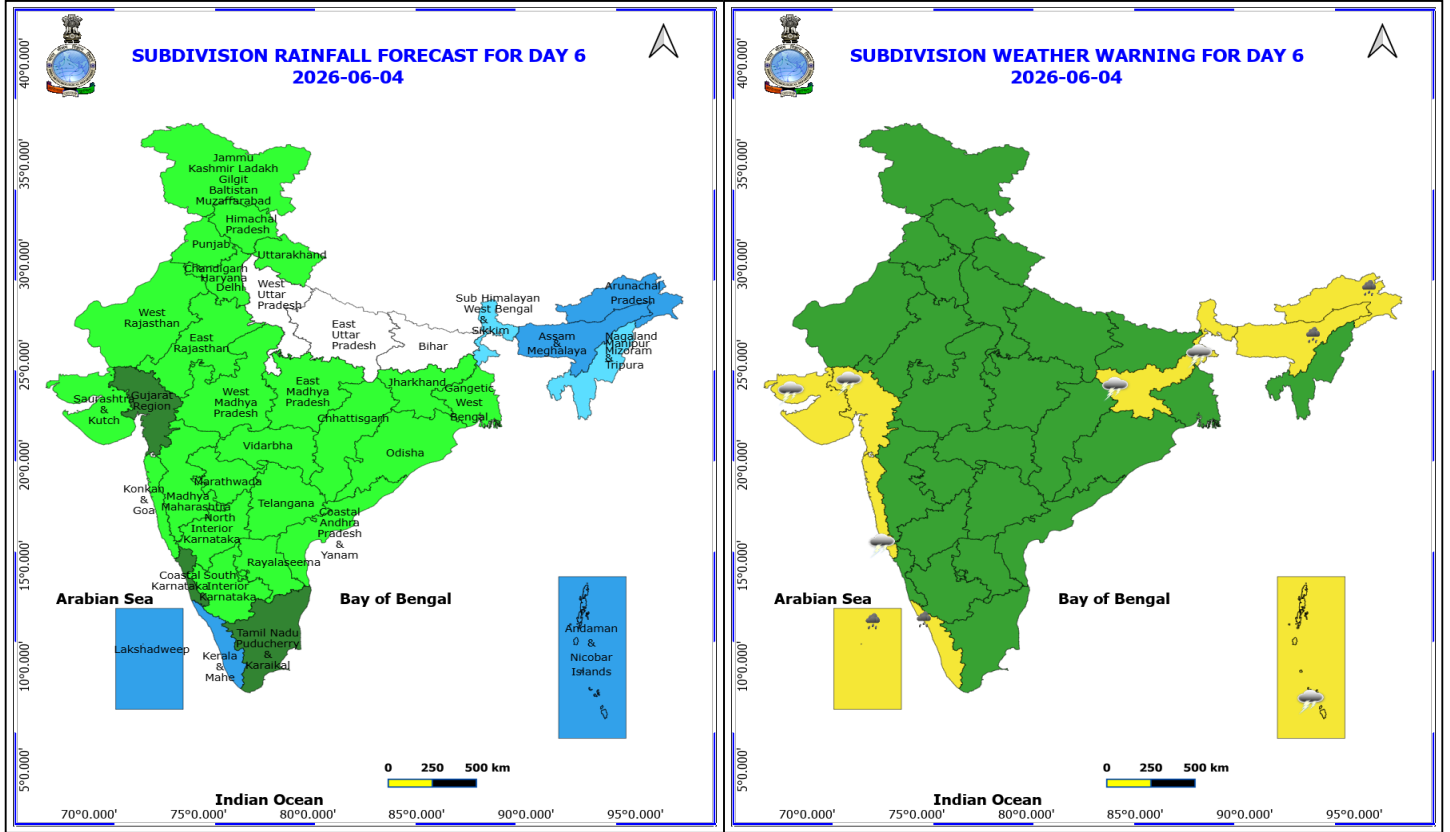
(Service to the nation since 1875)



3 June (Day 5)

- ❖ **Heavy Rainfall** likely at isolated places over Arunachal Pradesh, Assam & Meghalaya, Kerala & Mahe, Lakshadweep and Nagaland, Manipur, Mizoram and Tripura.
- ❖ **Thunderstorm accompanied with lightning & gusty winds(40-50kmph)** likely at isolated places over Andaman & Nicobar Islands, Gujarat State, Jharkhand, Konkan & Goa, Madhya Maharashtra, Marathwada and Sub Himalayan West Bengal & Sikkim.
- ❖ **Thunderstorm accompanied with lightning & gusty winds(30-40kmph)** likely at isolated places over Odisha and Rajasthan.

No Fishermen Warning

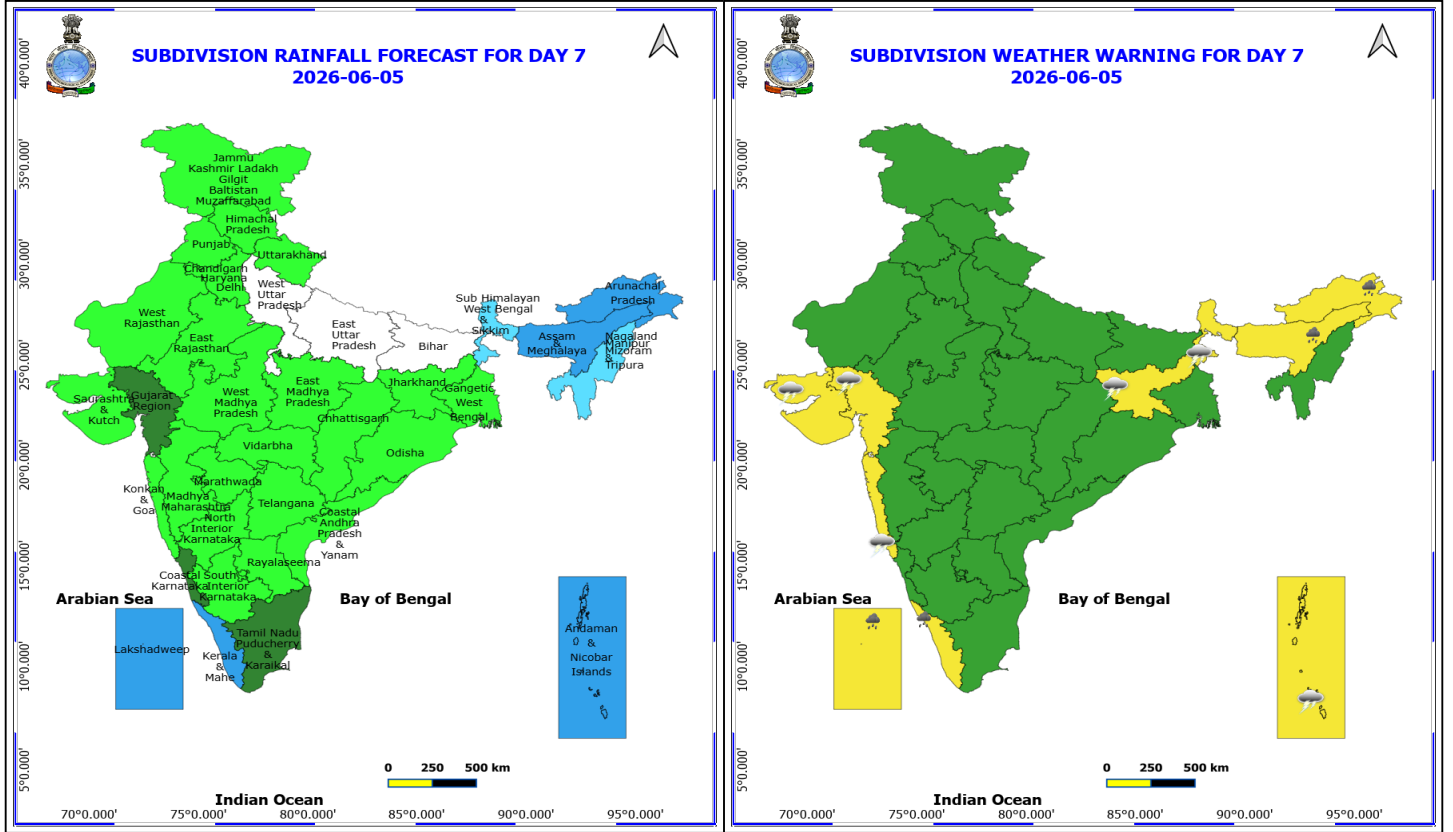


4 June (Day 6)

- ❖ **Heavy Rainfall** likely at isolated places over Arunachal Pradesh, Assam & Meghalaya, Kerala & Mahe and Lakshadweep.
- ❖ **Thunderstorm accompanied with lightning & gusty winds(40-50kmph)** likely at isolated places over Andaman & Nicobar Islands, Gujarat State, Jharkhand, Konkan & Goa and Sub Himalayan West Bengal & Sikkim.
- ❖ **Thunderstorm accompanied with lightning & gusty winds(30-40kmph)** likely at isolated places over Odisha and Rajasthan.

No Fishermen Warning

***Red color warning does not mean "Red Alert" Red color warning means "Take Action"**
Forecast and warning for any day is valid from 0830 hours IST of day till 0830 hours IST of next day
For more details kindly visit <https://mausam.imd.gov.in> or contact 011-2434-4599
(Service to the nation since 1875)



5 June (Day 7)

- ❖ **Heavy Rainfall** likely at isolated places over Arunachal Pradesh, Assam & Meghalaya, Kerala & Mahe and Lakshadweep.
- ❖ **Thunderstorm accompanied with lightning & gusty winds(40-50kmph)** likely at isolated places over Andaman & Nicobar Islands, Gujarat State, Jharkhand, Konkan & Goa and Sub Himalayan West Bengal & Sikkim.
- ❖ **Thunderstorm accompanied with lightning & gusty winds(30-40kmph)** likely at isolated places over Odisha and Rajasthan.

No Fishermen Warning

***Red color warning does not mean "Red Alert" Red color warning means "Take Action"**
Forecast and warning for any day is valid from 0830 hours IST of day till 0830 hours IST of next day
For more details kindly visit <https://mausam.imd.gov.in> or contact 011-2434-4599
(Service to the nation since 1875)



Table-1

7 Days Rainfall Forecast

S.No.	Subdivision	30- May	31- May	1- Jun	2- Jun	3- Jun	4- Jun	5- Jun
		Day 1	Day 2	Day 3	Day 4	Day 5	Day 6	Day 7
1	ANDAMAN & NICOBAR ISLANDS	WS	WS	WS	WS	WS	WS	WS
2	ARUNACHAL PRADESH	SCT	SCT	FWS	FWS	FWS	WS	WS
3	ASSAM & MEHGHALAYA	SCT	SCT	FWS	FWS	WS	WS	WS
4	N. M. M. & T.	SCT	SCT	FWS	FWS	FWS	FWS	FWS
5	S.H. WEST BENGAL & SIKKIM	SCT	ISOL	ISOL	SCT	FWS	FWS	FWS
6	GANGETIC WEST BENGAL	SCT	ISOL	ISOL	ISOL	ISOL	ISOL	ISOL
7	ODISHA	SCT	ISOL	ISOL	ISOL	ISOL	ISOL	ISOL
8	JHARKHAND	SCT	SCT	ISOL	ISOL	ISOL	ISOL	ISOL
9	BIHAR	SCT	ISOL	ISOL	ISOL	DRY	DRY	DRY
10	EAST UTTAR PRADESH	FWS	SCT	ISOL	ISOL	DRY	DRY	DRY
11	WEST UTTAR PRADESH	FWS	FWS	SCT	ISOL	DRY	DRY	DRY
12	UTTARAKHAND	FWS	SCT	SCT	ISOL	ISOL	ISOL	ISOL
13	HARYANA, CHD & DELHI	FWS	ISOL	DRY	DRY	DRY	ISOL	ISOL
14	PUNJAB	FWS	ISOL	DRY	DRY	DRY	ISOL	ISOL
15	HIMACHAL PRADESH	SCT	ISOL	ISOL	ISOL	ISOL	ISOL	ISOL
16	JAMMU AND KASHMIR AND LADAKH	SCT	DRY	DRY	DRY	DRY	ISOL	ISOL
17	WEST RAJASTHAN	SCT	ISOL	ISOL	ISOL	ISOL	ISOL	ISOL
18	EAST RAJASTHAN	SCT	ISOL	ISOL	ISOL	ISOL	ISOL	ISOL
19	WEST MADHYA PRADESH	SCT	FWS	SCT	SCT	ISOL	ISOL	ISOL
20	EAST MADHYA PRADESH	SCT	SCT	ISOL	ISOL	ISOL	ISOL	ISOL
21	GUJRAT REGION	ISOL	SCT	FWS	FWS	SCT	SCT	SCT
22	SAURASHTRA & KUTCH	ISOL	ISOL	ISOL	ISOL	ISOL	ISOL	ISOL
23	KONKAN & GOA	ISOL	ISOL	ISOL	ISOL	ISOL	ISOL	ISOL
24	MADHYA MAHARASHTRA	ISOL	ISOL	ISOL	ISOL	ISOL	ISOL	ISOL
25	MARATHWADA	ISOL	ISOL	ISOL	ISOL	ISOL	ISOL	ISOL
26	VIDARBHA	ISOL	SCT	ISOL	ISOL	ISOL	ISOL	ISOL
27	CHATTISGARH	ISOL	ISOL	ISOL	ISOL	ISOL	ISOL	ISOL
28	COASTAL ANDHRA PRADESH	SCT	ISOL	ISOL	ISOL	ISOL	ISOL	ISOL
29	TELANGANA	ISOL	ISOL	ISOL	ISOL	ISOL	ISOL	ISOL
30	RAYALASEEMA	SCT	ISOL	ISOL	ISOL	ISOL	ISOL	ISOL
31	TAMILNADU & PUDUCHERRY	SCT	SCT	SCT	ISOL	SCT	SCT	SCT
32	COSTAL KARNATAKA	ISOL	ISOL	ISOL	SCT	SCT	SCT	SCT
33	NORTH INTERIOR KARNATAKA	ISOL	ISOL	ISOL	ISOL	ISOL	ISOL	ISOL
34	SOUTH INTERIOR KARNATAKA	SCT	SCT	ISOL	ISOL	ISOL	ISOL	ISOL
35	KERALA	FWS	WS	WS	WS	WS	WS	WS
36	LAKSHDWEEP	FWS	WS	WS	WS	WS	WS	WS

Legend	Category	%Stations
WS	Widespread/Most Places	76-100
FWS	Fairly Widespread/Many Places	51-75
SCT	Scattered/ A Few Places	26-50
ISOL	Isolated Places	1-25
DRY	No Rain	0

*Red color warning does not mean "Red Alert" Red color warning means "Take Action"
Forecast and warning for any day is valid from 0830 hours IST of day till 0830 hours IST of next day
For more details kindly visit <https://mausam.imd.gov.in> or contact 011-2434-4599

(Service to the nation since 1875)

Fig. 1: Maximum Temperatures Dated 2026-05-29

Fig. 2: Departure of Maximum Temp. Dated 2026-05-29

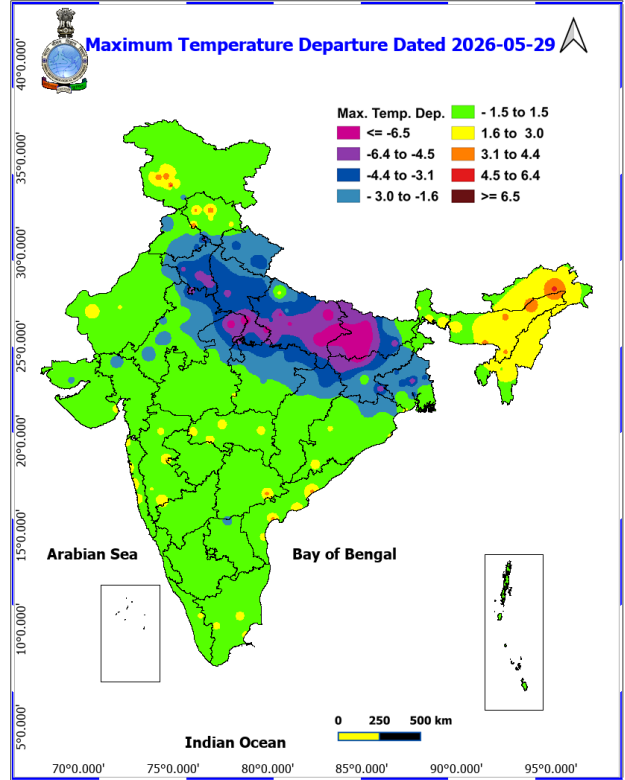
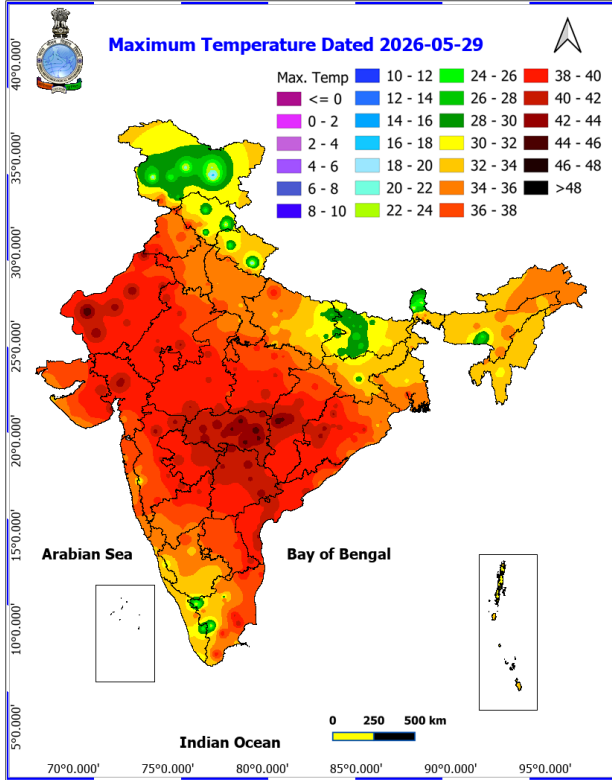
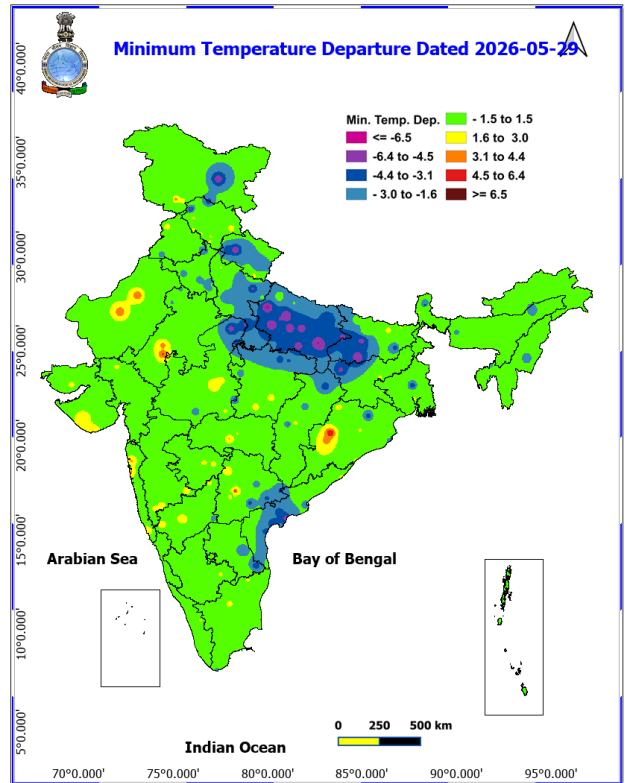
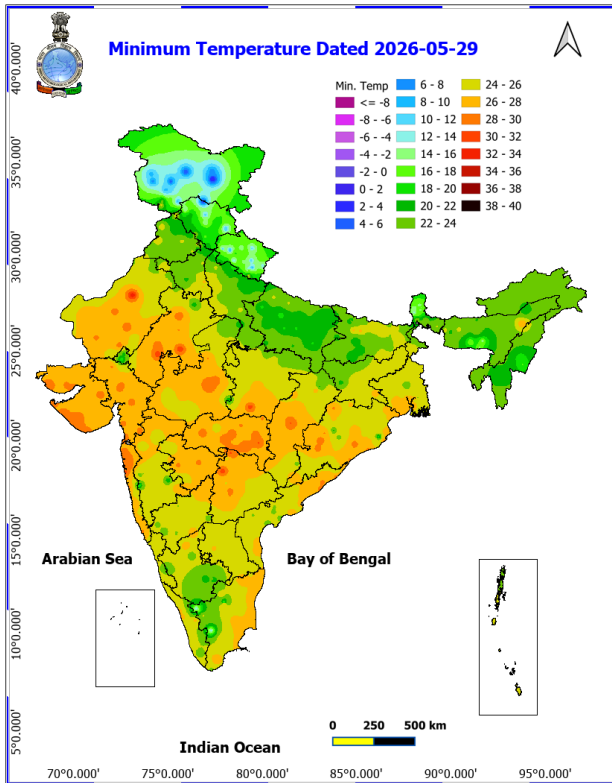
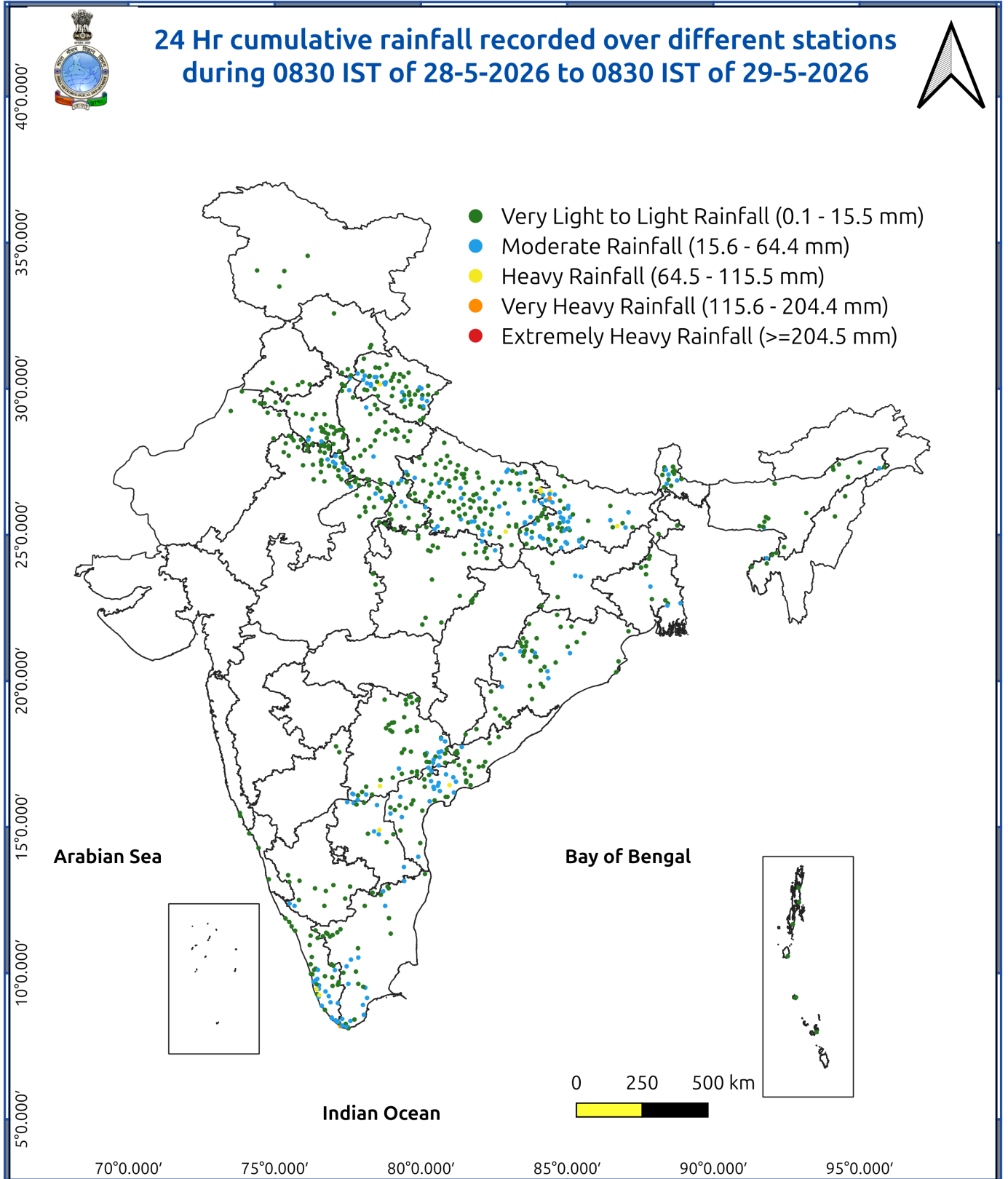


Fig. 3: Minimum Temperatures Dated 2026-05-29

Fig. 4: Departure of Minimum Temp. Dated 2026-05-29





Impact and Actions

Impact Expected & Action Suggested due to heavy/very heavy rainfall over

- **Isolated heavy rainfall** likely over Arunachal Pradesh during 01st – 04th June, Assam & Meghalaya during 02nd – 4th June; Nagaland, Manipur, Mizoram & Tripura during 31st May- 3rd June; Tamil Nadu, Puducherry & Karaikal during 30th May -01st June; Kerala & Mahe during 31st May-4th June; Lakshadweep during 31st May-4th June; Coastal Andhra Pradesh & Yanam during 30th – 31st May; Rayalaseema on 30th May, Andaman & Nicobar Islands, Odisha on 30th May; Bihar on 30th May; West Madhya Pradesh on 31st May & 01st June; Gujarat Region during 31st May – 2nd June.

Impact Expected

- Localized Flooding of roads, water logging in low lying areas and closure of underpasses mainly in urban areas.
- Occasional reduction in visibility due to heavy rainfall.
- Disruption of traffic in major cities due to water logging in roads leading to increased travel time.
- Minor damage to kutcha roads.
- Possibilities of damage to vulnerable structure.
- Localized Landslides/Mudslides/landslips/mudslips/landsinks/mudsinks.
- Damage to horticulture and standing crops in some areas due to inundation.
- It may lead to riverine flooding in some river catchments (for riverine flooding please visit Web page of CWC)

Action Suggested

- Check for traffic congestion on your route before leaving for your destination.
- Follow any traffic advisories that are issued in this regard.
- Avoid going to areas that face the water logging problems often.
- Avoid staying in vulnerable structure.

Impact expected and action suggested due to isolated thunderstorm with lightning/squally winds over

- Moderate to Severe Thunderstorm activity with squally wind speed likely over Northwest India, Central India and East India during 30th – 31st May.
- **Isolated Hailstorm activity** likely over Punjab, Haryana Chandigarh & Delhi, Rajasthan, Madhya Pradesh, Chhattisgarh on 30th May; Vidarbha on 30th & 31st May.

Impact expected:

- Breaking of tree branches, uprooting of large avenue trees. Large dead limbs blown from trees. Damage to Standing crops.
- Minor to Major damage to banana and papaya trees.
- Minor to major damage to power and communication lines due to breaking of branches.
- Strong wind/hail may damage plantation, horticulture and standing crops.
- Hail may injure people and cattle at open places.
- Partial damage to vulnerable structures due to strong winds.
- Minor damage to kutcha houses/walls and huts.
- Loose objects may fly.

Action suggested:

- People are advised to keep a watch on the weather for worsening conditions and be ready to move to safer places accordingly.
- Stay indoors, close windows & doors and avoid travel if possible.
- Take safe shelters; do not take shelter under trees.

***Red color warning does not mean "Red Alert" Red color warning means "Take Action"**

Forecast and warning for any day is valid from 0830 hours IST of day till 0830 hours IST of next day

For more details kindly visit <https://mausam.imd.gov.in> or contact 011-2434-4599

(Service to the nation since 1875)



- Do not lie on concrete floors and do not lean against concrete walls.
- Unplug electrical/ electronic appliances.
- Immediately get out of water bodies.
- Keep away from all the objects that conduct electricity.

Impact expected and action suggested due to Heat wave conditions:

- The prevailing heat wave have abated from most parts of Northwest India, and it is likely to abate from most parts of central India from tomorrow.

Red alert Areas

- Very high likelihood of developing heat illness and heat stroke in all ages.
- Extreme care needed for vulnerable people.

Orange alert Areas

- People who are either exposed to sun for a prolonged period or doing heavy work.
- High health concern for vulnerable people e.g. infants, elderly, people with chronic diseases.
- Avoid heat exposure– keep cool. Avoid dehydration.
- Drink sufficient water- even if not thirsty.
- Use ORS, homemade drinks like lassi, torani (rice water), lemon water, buttermilk, etc. to keep yourself hydrated.

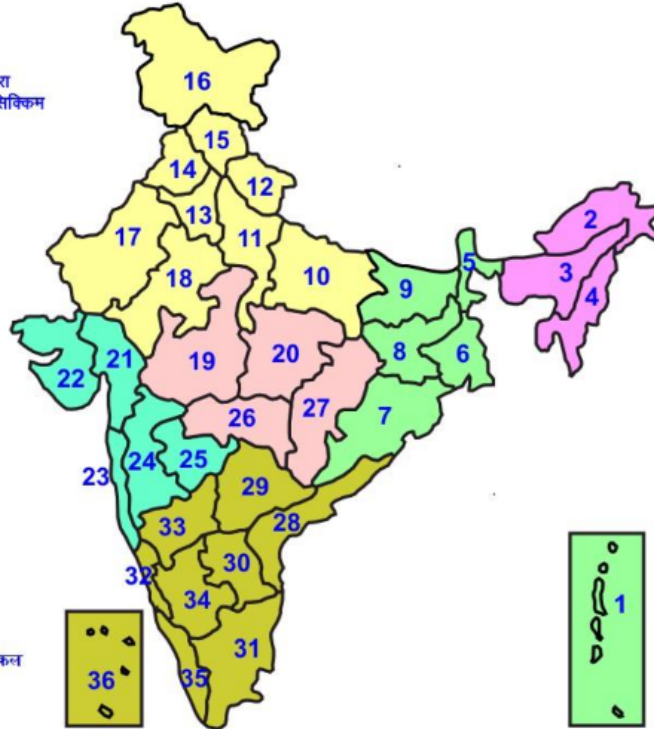
Yellow alert Areas

- Moderate temperature & heat is tolerable for general public but moderate health concern likely for vulnerable people e.g. infants, elderly, people with chronic diseases.
- Avoid heat exposure.
- Wear lightweight, light colour, loose, cotton clothes.
- Cover your head, use a cloth, hat or umbrella.

Agromet advisories for various parts of the country

LEGENDS

- 1 अंडमान और निकोबार द्वीप समुह
- 2 अरुणाचल प्रदेश
- 3 असम और मेघालय
- 4 नागालैंड मनीपुर मीजोरम और त्रिपुरा
- 5 उप हिमालय पश्चिम बंगाल एवं सिक्किम
- 6 पश्चिम बंगाल
- 7 ओडिसा
- 8 झारखंड
- 9 बिहार
- 10 पूर्वी उत्तर प्रदेश
- 11 पश्चिम उत्तर प्रदेश
- 12 उत्तराखंड
- 13 हरियाणा चंडिगढ़ एवं दिल्ली
- 14 पंजाब
- 15 हिमाचल प्रदेश
- 16 जम्मू एवं कश्मीर एवं लद्दाख
- 17 पश्चिम राजस्थान
- 18 पूर्वी राजस्थान
- 19 पश्चिम मध्य प्रदेश
- 20 पूर्वी मध्य प्रदेश
- 21 गुजरात क्षेत्र
- 22 सौराष्ट्र एवं कच्छ
- 23 कोंकण एवं गोवा
- 24 मध्य महाराष्ट्र
- 25 मराठावाडा
- 26 विदर्भ
- 27 छत्तीसगढ़
- 28 तटीय आंध्र प्रदेश एवं यनम
- 29 तेलंगाना
- 30 रायलसीमा
- 31 तमिलनाडु, पुदुचेरी एवं कराईकल
- 32 तटिय कर्नाटक
- 33 आंतरिक उत्तरी कर्नाटक
- 34 आंतरिक दक्षिणी कर्नाटक
- 35 केरल एवं माहे
- 36 लक्षद्वीप



1. Andaman & Nicobar Islands
2. Arunachal Pradesh
3. Assam & Meghalaya
4. Nagaland, Manipur, Mizoram & Tripura
5. Sub-Himalayan West Bengal & Sikkim
6. Gangetic West Bengal
7. Orissa
8. Jharkhand
9. Bihar
10. East Uttar Pradesh
11. West Uttar Pradesh
12. Uttarakhand
13. Haryana, Chd & Delhi
14. Punjab
15. Himachal Pradesh
16. Jammu & Kashmir and Ladakh
17. West Rajasthan
18. East Rajasthan
19. West Madhya Pradesh
20. East Madhya Pradesh
21. Gujarat
22. Saurashtra
23. Konkan & Goa
24. Madhya Maharashtra
25. Marathawada
26. Vidharbha
27. Chhattisgarh
28. Coastal Andhra Pradesh & Yanam
29. Telangana
30. Rayalaseema
31. Tamilnadu, Puducherry & Karaikal
32. Coastal Karnataka
33. North Interior Karnataka
34. South Interior Karnataka
35. Kerala & Mahe
36. Lakshadweep

SPATIAL DISTRIBUTION (% of Stations reporting)

% Stations	Category	% Stations	Category
76-100	Widespread (WS/ Most Places)	26-50	Scattered (SCT/ A Few Places)
51-75	Fairly Widespread (FWS/ Many Places)	1-25	Isolated (ISOL)

Subdivision Colour

- NO WARNING
- WATCH (BE UPDATED)
- ALERT (BE PREPARED TO TAKE ACTION)
- WARNING (TAKE ACTION)

Probabilistic Forecast

Terms	Probability of Occurrence (%)
Unlikely	< 25
Likely	25 - 50
Very Likely	50 - 75
Most Likely	> 75

- | | | | |
|--------------------------|-----------------|----------------------|--------------------|
| Heavy Rain | Very Heavy Rain | Extremely Heavy Rain | Heavy Snow |
| Thunderstorm & Lightning | Hailstrom | Dust Storm | Dust Raising Winds |
| Strong surface winds | Heat Wave | Hot Day | Warm Night |
| Cold Wave | Cold Day | Ground Frost | Fog |
| Hot & Humid | | | |

*Red color warning does not mean "Red Alert" Red color warning means "Take Action"

Forecast and warning for any day is valid from 0830 hours IST of day till 0830 hours IST of next day

For more details kindly visit <https://mausam.imd.gov.in> or contact 011-2434-4599

(Service to the nation since 1875)

LEGENDS

WARNING

WARNING (TAKE ACTION)
ALERT (BE PREPARED)
WATCH (BE UPDATED)
NO WARNING (NO ACTION)

Probabilistic Forecast

Terms	Probability of Occurrence (%)
Unlikely	< 25
Likely	25 - 50
Very Likely	50 - 75
Most Likely	> 75



Heavy: 64.5 to 115.5 mm/cm *
Very Heavy: 115.6 to 204.4 mm/cm*
Extremely Heavy: > 204.4 mm/cm *



When maximum temperature of a station reaches $\geq 40^{\circ}\text{C}$ for plains and $\geq 30^{\circ}\text{C}$ for hilly regions
(a) Based on Departure from normal

Heat Wave: Maximum Temperature Departure from normal 4.5°C to 6.4°C .
Severe Heat Wave: Maximum Temperature Departure from normal $\geq 6.5^{\circ}\text{C}$

(b). Based on Actual maximum temperature

Heat Wave: When actual maximum temperature $\geq 45^{\circ}\text{C}$.
Severe Heat Wave: When actual maximum temperature $\geq 47^{\circ}\text{C}$

(c). Criteria for heat wave for coastal stations

When maximum temperature departure is $> 4.5^{\circ}\text{C}$ from normal. Heat Wave may be described provided maximum temperature $\geq 37^{\circ}\text{C}$



When maximum temperature remains 40°C

Warm Night: When minimum temperature departure 4.5°C to 6.4°C .
Severe Warm Night: When minimum temperature departure $> 6.4^{\circ}\text{C}$.



When minimum temperature of a station $\leq 10^{\circ}\text{C}$ for plains and $\leq 0^{\circ}\text{C}$ for hilly regions.

(a). Based on departure

Cold Wave: Minimum Temperature Departure from normal -4.5°C to -6.4°C .
Severe Cold Wave: Minimum Temperature Departure from normal $\leq -6.5^{\circ}\text{C}$

(b) Based on actual Minimum Temperature (for Plains only)

Cold Wave : When Minimum Temperature is $\leq 4.0^{\circ}\text{C}$
Severe Cold Wave: When Minimum Temperature is $\leq 2.0^{\circ}\text{C}$

(c) For Coastal Stations

When Minimum Temperature departure is $\leq -4.5^{\circ}\text{C}$ & actual Minimum Temperature is $\leq 15^{\circ}\text{C}$



When minimum temperature of a station $\leq 10^{\circ}\text{C}$ for plains and $\leq 0^{\circ}\text{C}$ for hilly regions
Based on departure

Cold Day: Maximum Temperature Departure from normal -4.5°C to -6.4°C .
Severe Cold Day: Maximum Temperature Departure from normal $\leq -6.5^{\circ}\text{C}$



Phenomenon of small droplets suspended in air and the horizontal visibility $< 1\text{km}$

Moderate Fog: When the visibility between 500-200 metres
Dense Fog: when the visibility between 50- 200 metres
Very Dense Fog: when the visibility < 50 metres



Sudden electrical discharges manifested by a flash of light (Lightning) and a sharp rumbling sound (thunder)



An ensemble of particles of dust or sand energetically lifted to great heights by a strong and turbulent wind.



Ice deposits on ground

Air temperature $\leq 4^{\circ}\text{C}$ (over Plains)



A strong wind that rises suddenly, lasts for atleast 1 minute.

Moderate: Wind speed 52-61 kmph
Severe: Wind speed 62-87 kmph
Very Severe: Wind speed > 87 kmph



Effect of various waves in the sea over specific area

Rough to very rough: Wind speed 41-62 kmph (22-33 knots) & Wave height 2.5-6 metre
High to very high: Wind speed 63-117 kmph (34-63 knots) & Wave height 6-14 metre
Phenomenal: Wind speed > 117 kmph (> 63 knots) & Wave height > 14 metre



Cyclonic Storm: Wind speed 62-87 kmph (34-47 knots)
Severe Cyclonic Storm: Wind speed 88-117 kmph (48-63 knots)
Very Severe Cyclonic Storm: Wind speed 118-165 kmph (64 - 89 knots)
Extremely Severe Cyclonic Storm: Wind speed 166-220 kmph (90 -119 knots)
Super Cyclone Storm: Wind speed > 220 kmph (> 119 knots)

*Red color warning does not mean "Red Alert" Red color warning means "Take Action"

Forecast and warning for any day is valid from 0830 hours IST of day till 0830 hours IST of next day

For more details kindly visit <https://mausam.imd.gov.in> or contact 011-2434-4599

(Service to the nation since 1875)