

2025-07-28

Time of Issue: 08:45:00 hours IST
(Morning)

ALL INDIA WEATHER SUMMARY AND FORECAST BULLETIN

Significant Weather Features

Northwest India:

Extremely heavy rainfall very likely at isolated places over East Rajasthan on 28th July with **very heavy rainfall** during 29th-31st July.

A fresh spell of Heavy to very heavy rainfall likely to commence over Western Himalayan region during 29th-31st July.

Isolated very heavy rainfall over West Uttar Pradesh on 28th, Uttarakhand during 28th-30th, Himachal Pradesh on 29th and Jammu & Kashmir on 30th July.

Isolated **heavy rainfall** likely over Uttarakhand during 28th July-02nd August; Himachal Pradesh during 28th-30th; Jammu and Kashmir, East Uttar Pradesh during 29th-31st; Haryana & Chandigarh, West Uttar Pradesh on 28th & 29th and West Rajasthan during 28th-31st July.

Light/moderate rainfall at many places accompanied with thunderstorm, lightning likely over Western Himalayan region and some places over the plains during next 7 days.

West India:

Isolated **heavy rainfall** likely over Konkan & Goa, Gujarat state, Ghat areas of Madhya Maharashtra during 28th-30th July with isolated **very heavy rainfall** over Ghat areas of Madhya Maharashtra on 28th; Gujarat Region on 28th July.

Light to moderate rainfall at many places very likely over the region during next 6-7 days.

Northeast India:

A fresh spell of Heavy to very heavy rainfall likely to commence over Northeast India during 01st-03rd August.

Extremely heavy rainfall very likely at isolated places over Nagaland, Manipur, Mizoram & Tripura on 01st & 02nd August.

Light/moderate rainfall at many places accompanied with **thunderstorm, lightning and isolated heavy to very heavy rainfall** likely to continue over Arunachal Pradesh, Assam & Meghalaya during 28th July-02nd August.

East & Central India:

Isolated **heavy rainfall** likely over Madhya Pradesh, Chhattisgarh during 28th-31st; Sub-Himalayan West Bengal & Sikkim during 28th July & 02nd August; Bihar during 28th-30th; Jharkhand, Gangetic West Bengal during 29th-31st; Odisha on 29th July with isolated **very heavy rainfall** over Madhya Pradesh on 28th & 29th; Sub-Himalayan West Bengal & Sikkim on 02nd August.

Light to moderate rainfall at most/many places accompanied with thunderstorm, lightning & gusty winds (speed reaching 30-40 Kmph) likely over the region during next 5 days.

South Peninsular India:

Isolated **heavy rainfall** likely over Kerala & Mahe, South Interior Karnataka during 28th-30th; Coastal Karnataka during 28th-31st July with isolated **very heavy rainfall** over Coastal Karnataka on 28th & 29th, South Interior Karnataka on & 28th July.

Strong surface winds (speed reaching 40-50 kmph) very likely over South Peninsular India during next 5 days.

Light to moderate rainfall at most/many places over Kerala & Mahe, Lakshadweep, Karnataka, Rayalaseema, Coastal Andhra Pradesh & Yanam and Telangana during next 7 days.

***Red color warning does not mean "Red Alert" Red color warning means "Take Action"**

Forecast and warning for any day is valid from 0830 hours IST of day till 0830 hours IST of next day

For more details kindly visit <https://mausam.imd.gov.in> or contact 011-2434-4599

(Service to the nation since 1875)

Main Weather Observations:

❖ **Rainfall distribution** (from 0830 hours IST to 1730 hours IST of yesterday): At most places over Kerala & Mahe; at a few places over Coastal Karnataka, Madhya Maharashtra, Himachal Pradesh, Konkan & Goa; at isolated places over Uttarakhand, Punjab, East Uttar Pradesh, Bihar, West Bengal & Sikkim, Marathwada, Gujarat state, Rajasthan, Lakshadweep, Andaman & Nicobar Islands, Interior Karnataka, Nagaland, Manipur, Mizoram & Tripura, Assam & Meghalaya; **Dry** over rest of the country.

❖ **Significant rainfall recorded(in cm)** (from 0830 hours IST to 1730 hours IST of yesterday): Rajasthan: Baran 14, Pali 9, Jhalawar, Pratapgarh 8 each; Gujarat state: Ahmedabad 26, Kheda 18, Anand 10, Patan, Banas kantha, Dang 7 each

❖ **Heavy Rainfall observed** (from 0830 hours IST to 1730 hours IST of yesterday): **Extremely heavy rain** at isolated places over Gujarat Region. **Heavy rain** at isolated places over Rajasthan, Gujarat.

❖ **Minimum Temperature Departures (as on 27-07-2025): markedly above normal(> 5.1°C)** at few places over Assam & Meghalaya; at isolated places over Sub Himalayan West Bengal & Sikkim, Bihar, East Uttar Pradesh, West Uttar Pradesh, Himachal Pradesh, West Madhya Pradesh and Saurashtra & Kutch. **appreciably above normal(3.1°C to 5.0°C)** at few places over Andaman & Nicobar Islands and East Madhya Pradesh; at isolated places over Gangetic West Bengal, Odisha, Haryana-Chandigarh-Delhi and Gujarat Region. **above normal(1.6°C to 3.0°C)** at many places over Punjab; at few places over Jammu-KashmirLadakh-Gilgit-Baltistan-Muzaffarabad, West Rajasthan, Madhya Maharashtra and Lakshadweep; at isolated places over Uttarakhand, Konkan & Goa, Coastal Andhra Pradesh & Yanam and Tamil Nadu, Puducherry & Karaikal. **near normal(-1.5°C to 1.5°C)** at many places over East Rajasthan; at most places over Arunachal Pradesh, Nagaland, Manipur, Mizoram & Tripura, Jharkhand, Marathwada, Vidarbha, Chhattisgarh, Telangana, Rayalaseema, Coastal Karnataka, North Interior Karnataka and South Interior Karnataka; at few places over Kerala & Mahe. **The lowest minimum temperature** of 18.0°C was reported at KHANDWA (MADHYA PRADESH) over the Plains of India.

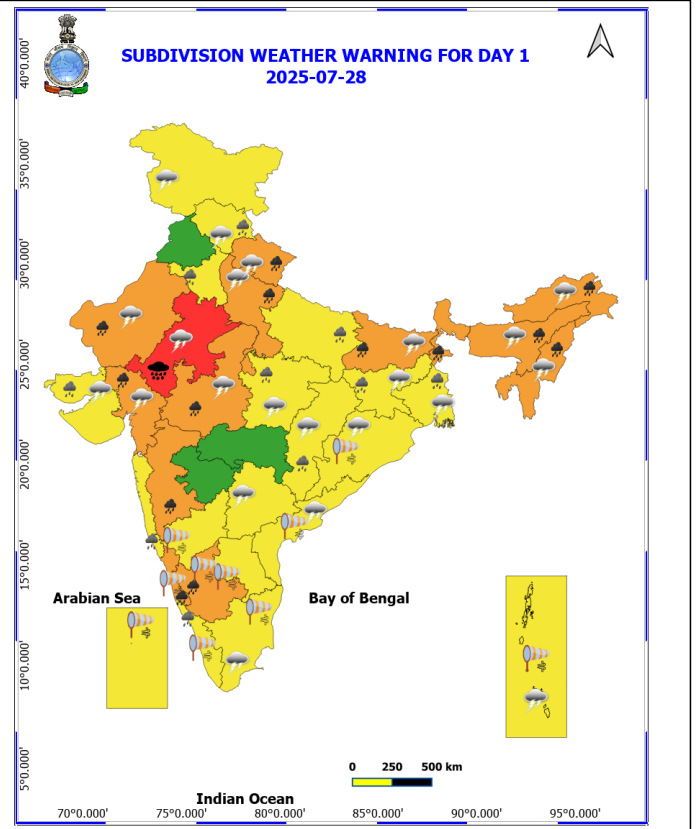
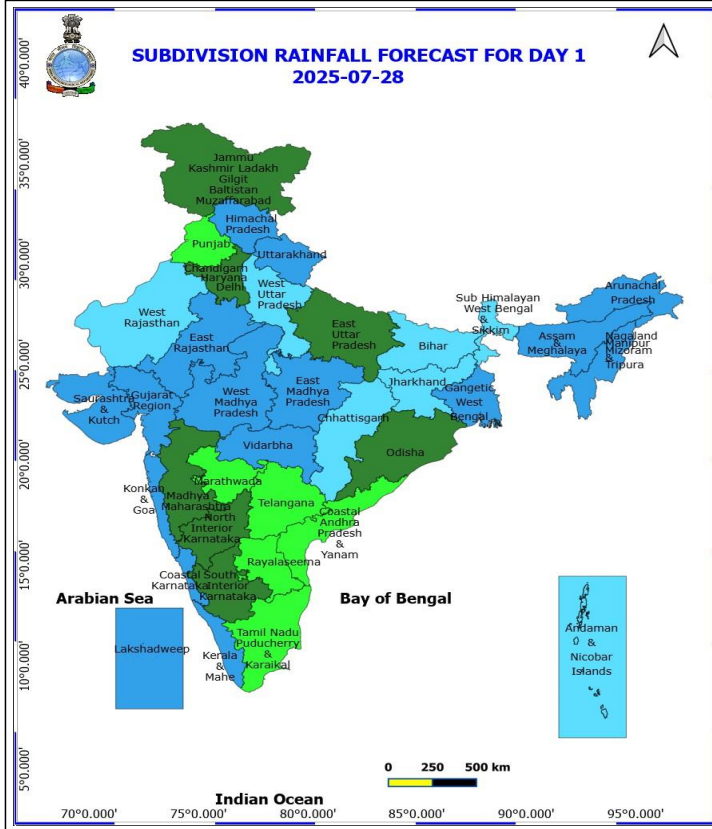
❖ **Maximum Temperature Departures (as on 27-07-2025): appreciably above normal(3.1°C to 5.0°C)** at few places over Coastal Karnataka, Odisha; at isolated places over West Uttar Pradesh, Haryana-Chandigarh-Delhi, Punjab; **near normal(-1.5°C to 1.5°C)** at many places over Nagaland, Manipur, Mizoram & Tripura, Coastal Karnataka and South Interior Karnataka; at most places over Andaman & Nicobar Islands, West Rajasthan, Saurashtra & Kutch, Konkan & Goa and Lakshadweep; at few places over East Rajasthan, Madhya Maharashtra, Coastal Andhra Pradesh & Yanam, Rayalaseema and Kerala & Mahe; at isolated places over Jharkhand, West Madhya Pradesh, East Madhya Pradesh, Vidarbha and North Interior Karnataka. **The highest maximum temperature** of 39.0°C was reported at JAISALMER (RAJASTHAN).

Meteorological Analysis (Based on 0530 hours IST)

- ❖ The **well marked low pressure** area over northwest Madhya Pradesh & adjoining east Rajasthan weakened into a **low pressure area** over the same region at 0530 hrs IST of today, the 28th July, 2025. The associated cyclonic circulation extended upto 5.8 km above mean sea level tilting southwestwards with height.
- ❖ The **trough** now runs from the northeast Arabian Sea to southeast Uttar Pradesh across Gujarat, East Rajasthan, cyclonic circulation associated with the low pressure area over northwest Madhya Pradesh & adjoining East Rajasthan at 3.1 km above mean sea level.
- ❖ The **monsoon trough** at mean sea level passes through Sri Ganganagar, Churu, center of **low pressure** area over northwest Madhya Pradesh & adjoining east Rajasthan, Satna, Deoria, Ranchi, Haldia and thence east-southeastwards to the northeast Bay of Bengal.
- ❖ The **upper air cyclonic circulation** over south Punjab & neighbourhood at 0.9 km above mean sea level persists.
- ❖ The off-shore **trough** at sea level along Gujarat- north Kerala coasts persists.
- ❖ A fresh **Western Disturbance** as a trough in middle tropospheric level with its axis at 5.8 km above mean sea level runs roughly along Long. 65°E to the north of Lat. 30°N.
- ❖ An **upper air cyclonic circulation** lies over north Bangladesh & neighbourhood and extends upto 5.8 km above mean sea level.
- ❖ A **trough** runs from north Bihar to Manipur across the above cyclonic circulation over north Bangladesh & neighbourhood, south Assam between 0.9 & 1.5 km above mean sea level.
- ❖ The **upper air cyclonic circulation** over northeast Assam & neighbourhood merged with the above systems.
- ❖ The **Western Disturbance** as a cyclonic circulation over Jammu & Kashmir & neighbourhood at 3.1 km above mean sea level with a trough aloft roughly along Long. 70°E to the north of Lat. 32°N has moved away.

Weather Outlook for subsequent 3 days

- Fairly widespread to widespread rainfall likely over northwest, northeast, eastern India.
- Scattered to fairly widespread rainfall likely over central and peninsular India.



28 July (Day 1)

- ❖ **Heavy to Very Heavy Rainfall with isolated Extremely Heavy Rainfall** very likely at isolated places over East Rajasthan.
- ❖ **Heavy to Very Heavy Rainfall** very likely at isolated places over Arunachal Pradesh, Assam & Meghalaya, Coastal Karnataka, Gujarat Region, Madhya Maharashtra, West Madhya Pradesh, Nagaland, Manipur, Mizoram and Tripura, South Interior Karnataka, Uttarakhand, Bihar, West Rajasthan, Sub-Himalayan West Bengal & Sikkim and West Uttar Pradesh.
- ❖ **Heavy Rainfall** very likely at isolated places over Bihar, Chhattisgarh, Haryana, Chandigarh & Delhi, East Uttar Pradesh, East Madhya Pradesh, Himachal Pradesh, Jharkhand, Kerala & Mahe, Konkan & Goa, Saurashtra & Kutch, West Bengal & Sikkim and West Rajasthan.
- ❖ **Thunderstorm accompanied with lightning & gusty winds(30-40kmph)** very likely at isolated places over Andaman & Nicobar Islands, Bihar, Gangetic West Bengal, Jammu-Kashmir-Ladakh-Gilgit-Baltistan-Muzaffargarh, Jharkhand, Odisha and Telangana.
- ❖ **Thunderstorm accompanied with Lightning** very likely at isolated places over Arunachal Pradesh, Assam & Meghalaya, Chhattisgarh, Coastal Andhra Pradesh, Gujarat State, Himachal Pradesh, Madhya Pradesh, Nagaland, Manipur, Mizoram and Tripura, Rajasthan, Tamil Nadu Puducherry & Karaikal, Uttarakhand and West Uttar Pradesh.
- ❖ **Strong Surface Winds** very likely at isolated places over Andaman & Nicobar Islands, Andhra Pradesh, Karnataka, Kerala & Mahe, Lakshadweep, Odisha and Tamil Nadu Puducherry & Karaikal.
 - Squally wind with speed reaching 45 kmph to 55 kmph gusting to 65 kmph is likely to prevail along and off Somalia, Yemen & south Oman coasts, most parts of westcentral Arabian Sea & eastcentral Arabian Sea,
 - many parts of southwest Arabian Sea, southern parts of north Arabian Sea.
 - Squally weather with wind speed reaching 40 - 50 kmph gusting to 60 kmph likely to prevail over many parts

*Red color warning does not mean "Red Alert" Red color warning means "Take Action"

Forecast and warning for any day is valid from 0830 hours IST of day till 0830 hours IST of next day

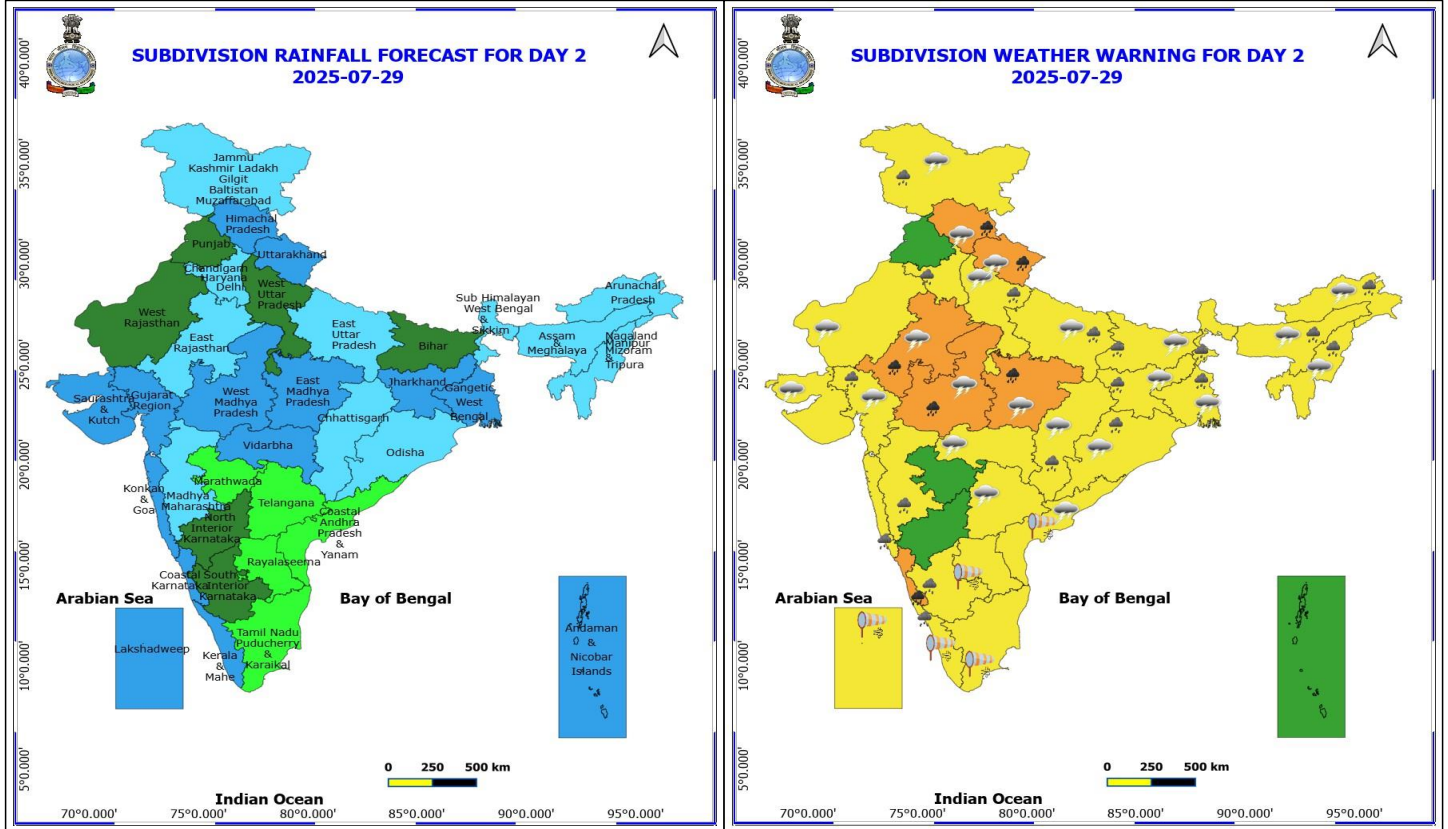
For more details kindly visit <https://mausam.imd.gov.in> or contact 011-2434-4599

(Service to the nation since 1875)



of eastcentral Arabian Sea & adjoining, some parts of westcentral Arabian Sea, many parts of southeast Arabian Sea & adjoining, some parts of southwest Arabian Sea, some parts of northeast Arabian Sea & adjoining parts of northwest Arabian Sea, along and off north Gujarat, Kerala, south Andhra Pradesh, Odisha, West Bengal, Bangladesh, Myanmar coasts, over Lakshadweep, Maldives, Comorin areas, over most parts of south Bay of Bengal, over central & north Bay of Bengal, over Gulf of Mannar, along and off Sri Lanka coast and Andaman Sea.

- Squally weather with wind speed 45 - 55 kmph gusting to 65 kmph likely to along and off south Gujarat, Konkan, Goa, Karnataka, north Andhra Pradesh coasts and adjoining sea areas, over most parts of westcentral Bay of Bengal & adjoining parts of southwest, eastcentral Bay of Bengal.



29 July (Day 2)

❖ **Heavy to Very Heavy Rainfall** very likely at isolated places over Coastal Karnataka, East Rajasthan, Himachal Pradesh, Madhya Pradesh and Uttarakhand.

❖ **Heavy Rainfall** very likely at isolated places over Arunachal Pradesh, Assam & Meghalaya, Bihar, Chhattisgarh, Gujarat Region, Haryana, Chandigarh & Delhi, Jammu-Kashmir-Ladakh-Gilgit-Baltistan-Muzaffarabad, Jharkhand, Kerala & Mahe, Konkan & Goa, Madhya Maharashtra, Nagaland, Manipur, Mizoram and Tripura, Odisha, South Interior Karnataka, Uttar Pradesh and West Bengal & Sikkim.

❖ **Thunderstorm accompanied with lightning & gusty winds(30-40kmph)** very likely at isolated places over Bihar, Gangetic West Bengal, Jammu-Kashmir-Ladakh-Gilgit-Baltistan-Muzaffarabad, Jharkhand, Odisha and Telangana.

❖ **Thunderstorm accompanied with Lightning** very likely at isolated places over Arunachal Pradesh, Assam & Meghalaya, Chhattisgarh, Coastal Andhra Pradesh, Gujarat State, Himachal Pradesh, Madhya Pradesh, Nagaland, Manipur, Mizoram and Tripura, Rajasthan, Uttar Pradesh, Uttarakhand and Vidarbha.

❖ **Strong Surface Winds** very likely at isolated places over Andhra Pradesh, Kerala & Mahe, Lakshadweep and Tamil Nadu Puducherry & Karaikal.

- Squally wind with speed reaching 45 kmph to 55 kmph gusting to 65 kmph is likely to prevail along and off Somalia, Yemen & south Oman coasts, most parts of westcentral Arabian Sea & eastcentral Arabian Sea, many parts of southwest Arabian Sea, southern parts of north Arabian Sea, along and off Karnataka coast .
- Squally weather with wind speed reaching 40 - 50 kmph gusting to 60 kmph likely to prevail over many parts of eastcentral Arabian Sea & adjoining, some parts of westcentral Arabian Sea, many parts of southeast Arabian Sea & adjoining, some parts of southwest Arabian Sea, many parts of northeast Arabian Sea & adjoining parts of northwest Arabian Sea, along and off north Gujarat, Kerala, north Andhra Pradesh, Odisha,

***Red color warning does not mean "Red Alert" Red color warning means "Take Action"**

Forecast and warning for any day is valid from 0830 hours IST of day till 0830 hours IST of next day

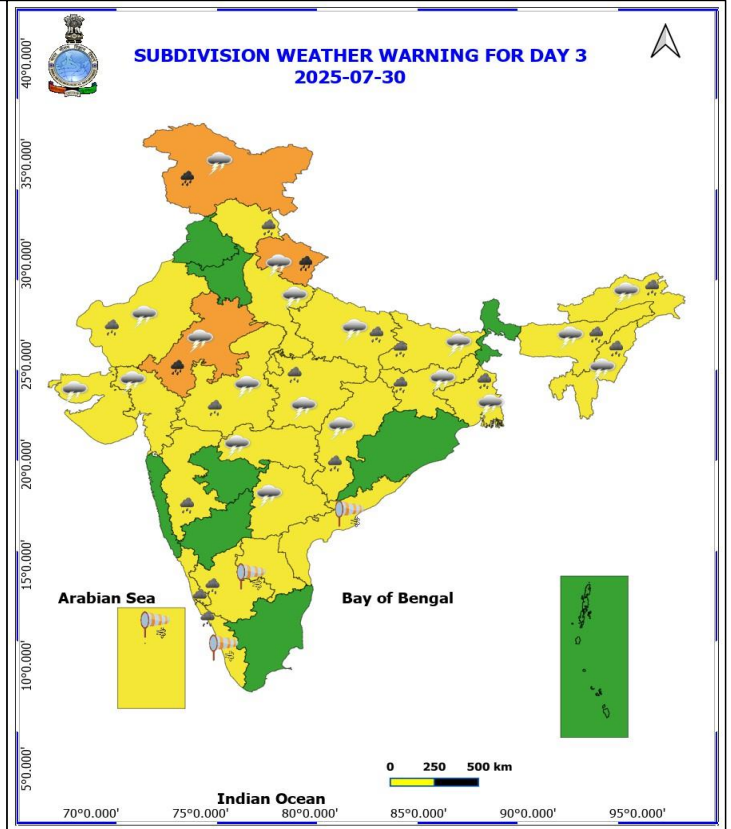
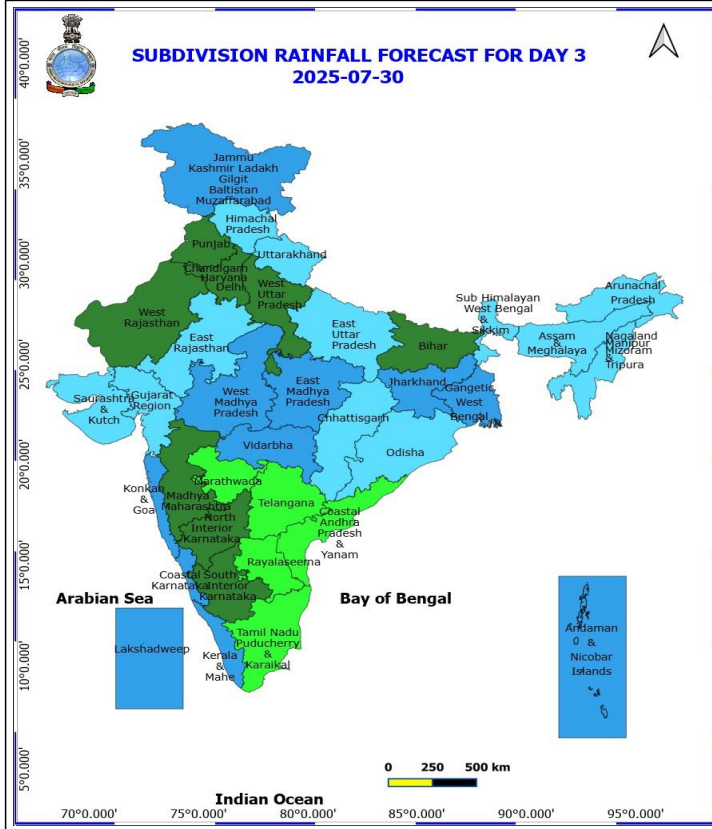
For more details kindly visit <https://mausam.imd.gov.in> or contact 011-2434-4599

(Service to the nation since 1875)



West Bengal, Bangladesh coasts, over Lakshadweep, Maldives, Comorin areas, over many parts of south Bay of Bengal, over most parts of central & north Bay of Bengal, over Gulf of Mannar, along and off Sri Lanka coast and Andaman Sea.

- Squally weather with wind speed 45 - 55 kmph gusting to 65 kmph likely to prevail along and off south Gujarat, Konkan, Goa coasts and adjoining sea areas, over some parts of central Bay of Bengal.



30 July (Day 3)

- ❖ **Heavy to Very Heavy Rainfall** very likely at isolated places over East Rajasthan, Jammu-Kashmir-Ladakh-Gilgit-Baltistan-Muzaffarabad and Uttarakhand.
- ❖ **Heavy Rainfall** very likely at isolated places over Arunachal Pradesh, Assam & Meghalaya, Bihar, Chhattisgarh, Coastal Karnataka, East Uttar Pradesh, Gangetic West Bengal, Himachal Pradesh, Jharkhand, Kerala & Mahe, Madhya Maharashtra, Madhya Pradesh, Nagaland, Manipur, Mizoram and Tripura, South Interior Karnataka and West Rajasthan.
- ❖ **Thunderstorm accompanied with lightning & gusty winds(30-40kmph)** very likely at isolated places over Bihar, Gangetic West Bengal, Jammu-Kashmir-Ladakh-Gilgit-Baltistan-Muzaffarabad, Jharkhand and Telangana.
- ❖ **Thunderstorm accompanied with Lightning** very likely at isolated places over Arunachal Pradesh, Assam & Meghalaya, Chhattisgarh, Gujarat State, Madhya Pradesh, Nagaland, Manipur, Mizoram and Tripura, Rajasthan, Uttar Pradesh, Uttarakhand and Vidarbha.
- ❖ **Strong Surface Winds** very likely at isolated places over Andhra Pradesh, Kerala & Mahe and Lakshadweep.
 - Squally wind with speed reaching 45 kmph to 55 kmph gusting to 65 kmph is likely to prevail along and off Somalia, Yemen & south Oman coasts, most parts of westcentral Arabian Sea & eastcentral Arabian Sea, many parts of southwest Arabian Sea, southern parts of north Arabian Sea.
 - Squally weather with wind speed reaching 40 - 50 kmph gusting to 60 kmph likely to prevail over many parts of eastcentral Arabian Sea & adjoining, some parts of westcentral Arabian Sea, many parts of southeast Arabian Sea & adjoining, some parts of southwest Arabian Sea, most parts of northeast Arabian Sea & adjoining, some parts of northwest Arabian Sea, along and off Kerala, Karnataka, North Andhra Pradesh coasts, over Lakshadweep, Maldives, Comorin areas, over most parts of southwest Bay of Bengal & adjoining parts of southeast Bay of Bengal, over most parts of central & adjoining north Bay of Bengal, over Gulf of

***Red color warning does not mean "Red Alert" Red color warning means "Take Action"**

Forecast and warning for any day is valid from 0830 hours IST of day till 0830 hours IST of next day

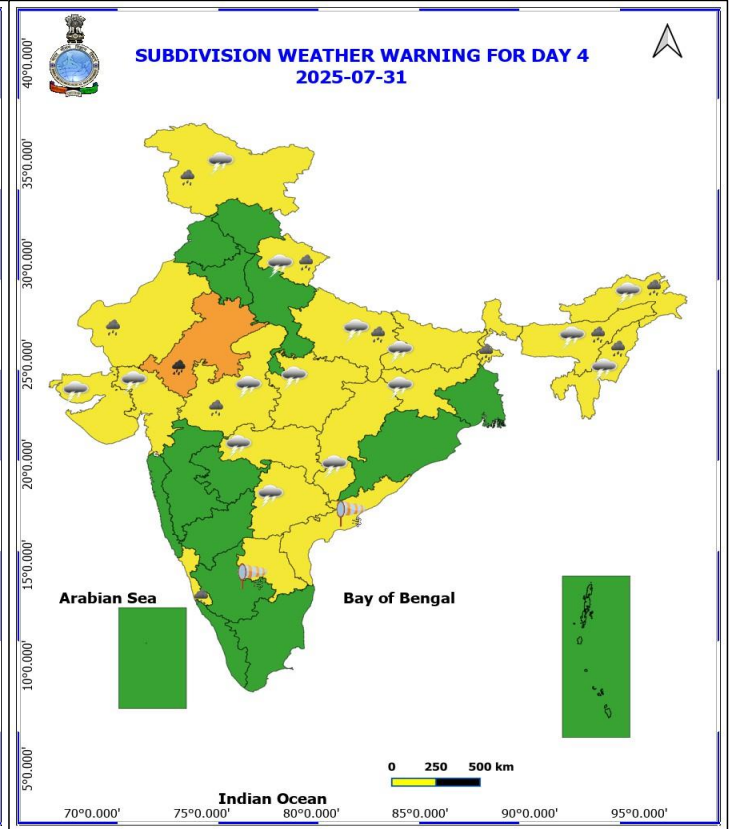
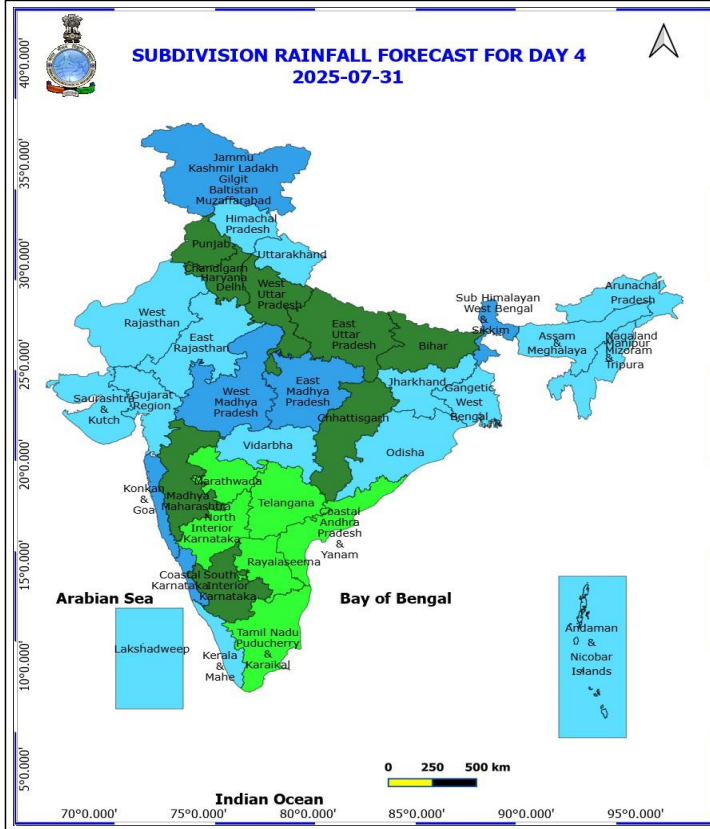
For more details kindly visit <https://mausam.imd.gov.in> or contact 011-2434-4599

(Service to the nation since 1875)



Mannar, along and off Sri Lanka coast.

- Squally weather with wind speed 45 - 55 kmph gusting to 65 kmph likely to prevail along and off Gujarat, Konkan, Goa coasts and adjoining sea areas.



31 July (Day 4)

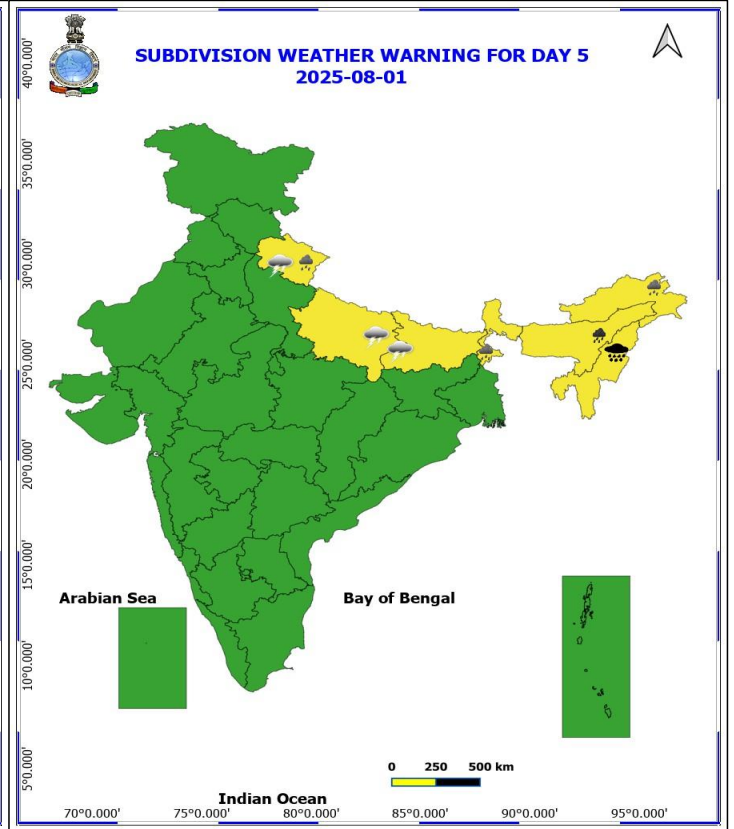
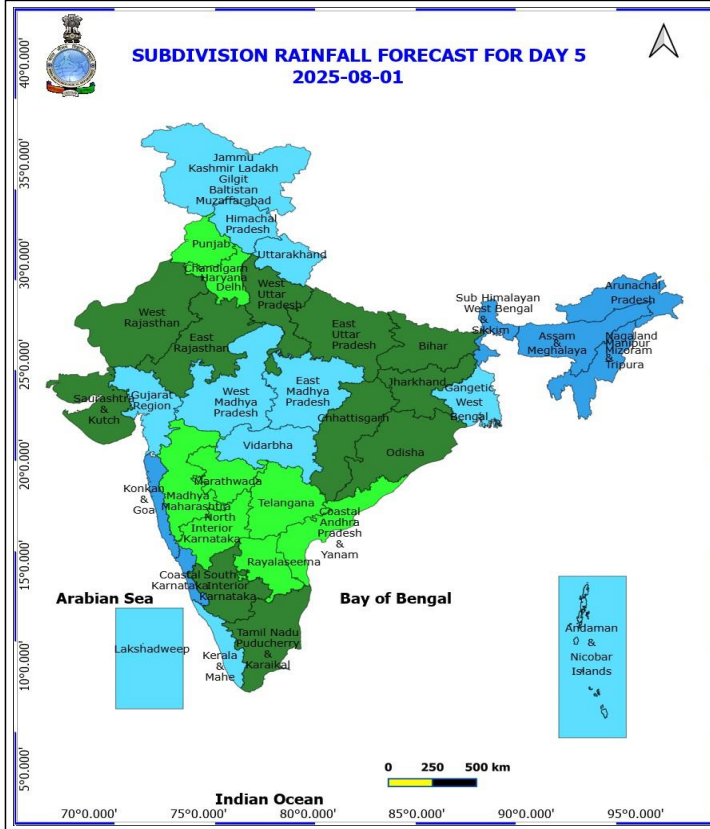
- ❖ **Heavy to Very Heavy Rainfall** likely at isolated places over East Rajasthan.
- ❖ **Heavy Rainfall** likely at isolated places over Arunachal Pradesh, Assam & Meghalaya, Coastal Karnataka, East Uttar Pradesh, Jammu-Kashmir-Ladakh-Gilgit-Baltistan-Muzaffarabad, Nagaland, Manipur, Mizoram and Tripura, Sub Himalayan West Bengal & Sikkim, Uttarakhand, West Madhya Pradesh and West Rajasthan.
- ❖ **Thunderstorm accompanied with lightning & gusty winds(30-40kmph)** likely at isolated places over Bihar, Jammu-Kashmir-Ladakh-Gilgit-Baltistan-Muzaffarabad, Jharkhand and Telangana.
- ❖ **Thunderstorm accompanied with Lightning** likely at isolated places over Arunachal Pradesh, Assam & Meghalaya, Chhattisgarh, East Uttar Pradesh, Gujarat State, Madhya Pradesh, Nagaland, Manipur, Mizoram and Tripura, Uttarakhand and Vidarbha.
- ❖ **Strong Surface Winds** likely at isolated places over Andhra Pradesh.
 - Squally wind with speed reaching 45 kmph to 55 kmph gusting to 65 kmph is likely to prevail along and off Somalia, Yemen & south Oman coasts, most parts of westcentral Arabian Sea & eastcentral Arabian Sea, many parts of southwest Arabian Sea, southern parts of north Arabian Sea.
 - Squally weather with wind speed reaching 40 - 50 kmph gusting to 60 kmph likely to prevail over many parts of eastcentral Arabian Sea & adjoining, some parts of westcentral Arabian Sea, many parts of southeast Arabian Sea & adjoining, some parts of southwest Arabian Sea, most parts of northeast Arabian Sea & adjoining, some parts of northwest Arabian Sea, along and off Karnataka coasts, Comorin areas, over most parts of southwest Bay of Bengal & adjoining parts of southeast Bay of Bengal, over most parts of central & adjoining north Bay of Bengal, over Gulf of Mannar, along and off Sri Lanka coast.
 - Squally weather with wind speed 45 - 55 kmph gusting to 65 kmph likely to prevail along and off Gujarat, Konkan, Goa coasts and adjoining sea areas.

***Red color warning does not mean "Red Alert" Red color warning means "Take Action"**

Forecast and warning for any day is valid from 0830 hours IST of day till 0830 hours IST of next day

For more details kindly visit <https://mausam.imd.gov.in> or contact 011-2434-4599

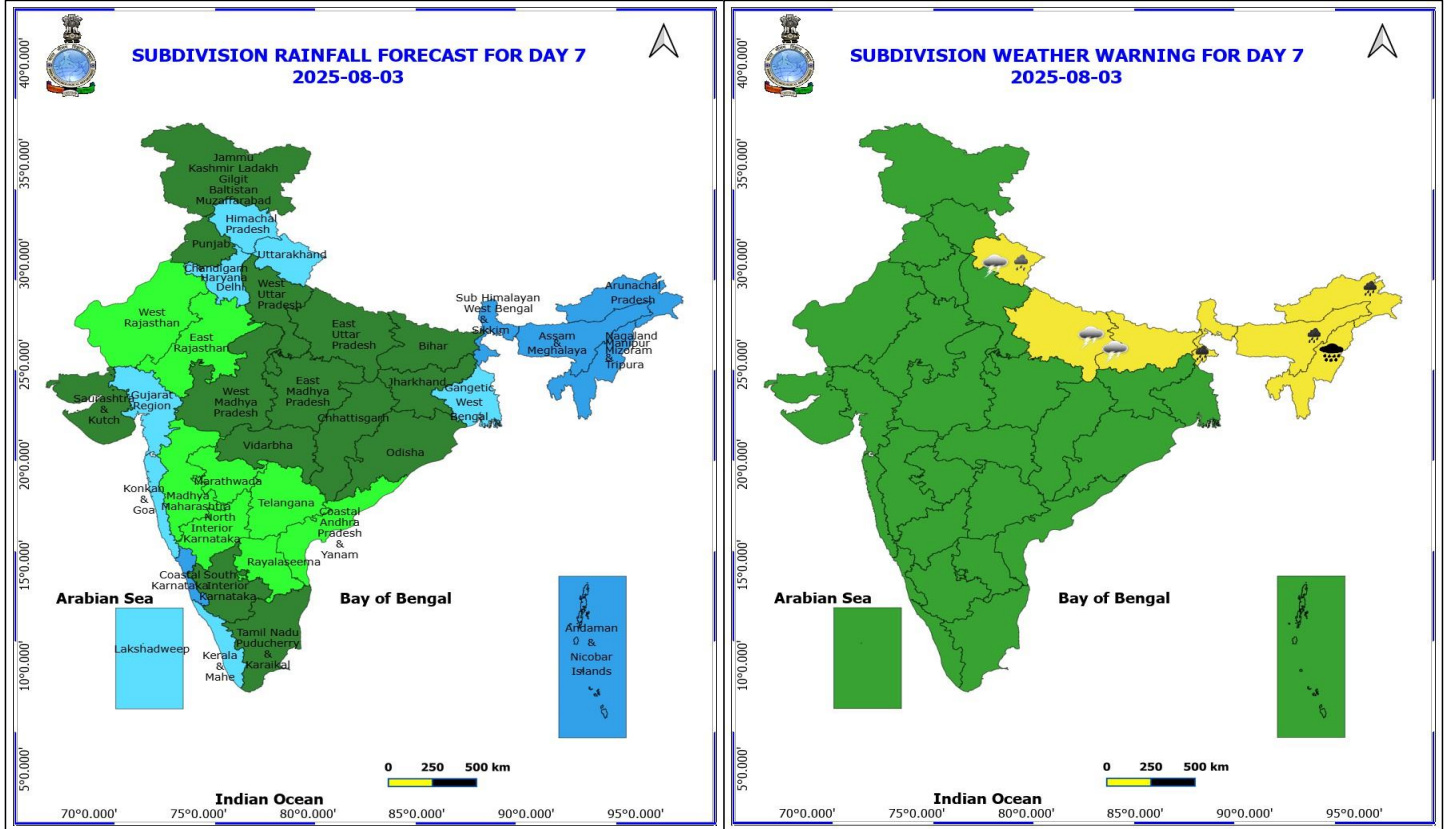
(Service to the nation since 1875)



1 August (Day 5)

- ❖ **Heavy to Very Heavy Rainfall with isolated Extremely Heavy Rainfall** likely at isolated places over Nagaland, Manipur, Mizoram and Tripura.
- ❖ **Heavy to Very Heavy Rainfall** likely at isolated places over Assam & Meghalaya.
- ❖ **Heavy Rainfall** likely at isolated places over Arunachal Pradesh, Sub Himalayan West Bengal & Sikkim and Uttarakhand.
- ❖ **Thunderstorm accompanied with lightning & gusty winds(30-40kmph)** likely at isolated places over Bihar.
- ❖ **Thunderstorm accompanied with Lightning** likely at isolated places over East Uttar Pradesh and Uttarakhand.

No Fishermen Warning



3 August (Day 7)

- ❖ **Heavy to Very Heavy Rainfall with isolated Extremely Heavy Rainfall** likely at isolated places over Nagaland, Manipur, Mizoram and Tripura.
- ❖ **Heavy to Very Heavy Rainfall** likely at isolated places over Arunachal Pradesh, Assam & Meghalaya and Sub Himalayan West Bengal & Sikkim.
- ❖ **Heavy Rainfall** likely at isolated places over Uttarakhand.
- ❖ **Thunderstorm accompanied with lightning & gusty winds(30-40kmph)** likely at isolated places over Bihar.
- ❖ **Thunderstorm accompanied with Lightning** likely at isolated places over East Uttar Pradesh and Uttarakhand.

No Fishermen Warning



Flash Flood Warnings

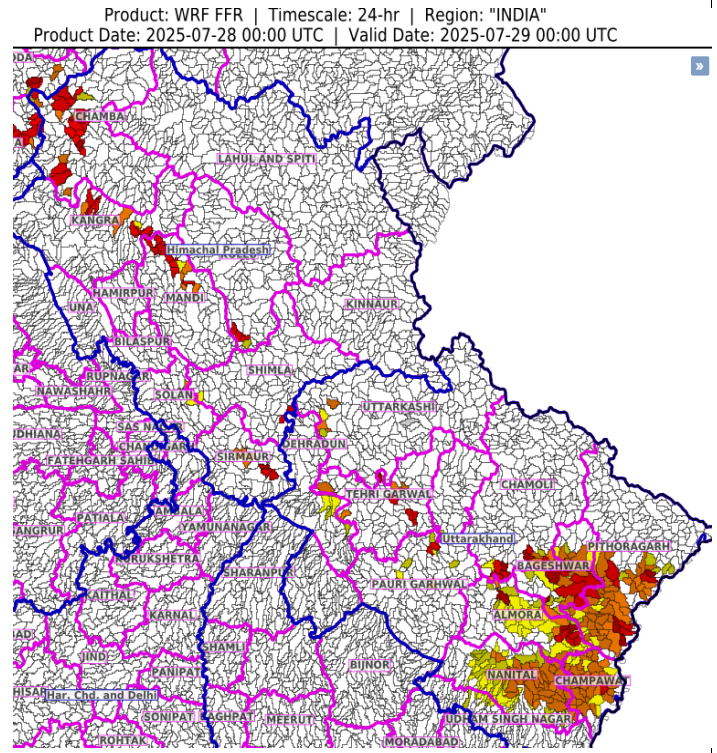
24 hours Outlook for the Flash Flood Risk (FFR) till 0530 IST of 29-07-2025:

Low to Moderate flash flood risk likely over few watersheds & neighbourhoods of following Met Sub-divisions during next 24 hours.

Himachal Pradesh – Chamba, Kangra, Mandi, Kullu, Shimla and Sirmaur districts.

Uttarakhand – Dehradun, Tehri Garhwal, Pauri Garhwal, Chamoli, Almora, Bageshwar, Pithoragarh, Nainital, Champawat and Udham Singh Nagar districts.

Surface runoff/ Inundation may occur at some fully saturated soils & low-lying areas over Area of Concern (AoC) as shown in map due to expected rainfall occurrence in next 24 hours.



***Red color warning does not mean "Red Alert" Red color warning means "Take Action"**
Forecast and warning for any day is valid from 0830 hours IST of day till 0830 hours IST of next day
For more details kindly visit <https://mausam.imd.gov.in> or contact 011-2434-4599



Table-1

7 Days Rainfall Forecast

S.No.	Subdivision	28- Jul	29- Jul	30- Jul	31- Jul	1- Aug	2- Aug	3- Aug
		Day 1	Day 2	Day 3	Day 4	Day 5	Day 6	Day 7
1	ANDAMAN & NICOBAR ISLANDS	FWS	WS	WS	FWS	FWS	WS	WS
2	ARUNACHAL PRADESH	WS	FWS	FWS	FWS	WS	WS	WS
3	ASSAM & MEHGHALAYA	WS	FWS	FWS	FWS	WS	WS	WS
4	N. M. M. & T.	WS	FWS	FWS	FWS	WS	WS	WS
5	S.H. WEST BENGAL & SIKKIM	FWS	FWS	FWS	WS	WS	WS	WS
6	GANGETIC WEST BENGAL	WS	WS	WS	FWS	FWS	FWS	FWS
7	ODISHA	SCT	FWS	FWS	FWS	SCT	SCT	SCT
8	JHARKHAND	FWS	WS	WS	FWS	SCT	SCT	SCT
9	BIHAR	FWS	SCT	SCT	SCT	SCT	SCT	SCT
10	EAST UTTAR PRADESH	SCT	FWS	FWS	SCT	SCT	SCT	SCT
11	WEST UTTAR PRADESH	FWS	SCT	SCT	SCT	SCT	SCT	SCT
12	UTTARAKHAND	WS	WS	FWS	FWS	FWS	FWS	FWS
13	HARYANA, CHD & DELHI	SCT	FWS	SCT	SCT	ISOL	FWS	FWS
14	PUNJAB	ISOL	SCT	SCT	SCT	ISOL	SCT	SCT
15	HIMACHAL PRADESH	WS	WS	FWS	FWS	FWS	FWS	FWS
16	JAMMU AND KASHMIR AND LADAKH	SCT	FWS	WS	WS	FWS	SCT	SCT
17	WEST RAJASTHAN	FWS	SCT	SCT	FWS	SCT	ISOL	ISOL
18	EAST RAJASTHAN	WS	FWS	FWS	FWS	SCT	ISOL	ISOL
19	WEST MADHYA PRADESH	WS	WS	WS	WS	FWS	SCT	SCT
20	EAST MADHYA PRADESH	WS	WS	WS	WS	FWS	SCT	SCT
21	GUJRAT REGION	WS	WS	FWS	FWS	FWS	FWS	FWS
22	SAURASHTRA & KUTCH	WS	WS	FWS	FWS	SCT	SCT	SCT
23	KONKAN & GOA	WS	WS	WS	WS	WS	FWS	FWS
24	MADHYA MAHARASHTRA	SCT	FWS	SCT	SCT	ISOL	ISOL	ISOL
25	MARATHWADA	ISOL	ISOL	ISOL	ISOL	ISOL	ISOL	ISOL
26	VIDARBHA	WS	WS	WS	FWS	FWS	SCT	SCT
27	CHATTISGARH	FWS	FWS	FWS	SCT	SCT	SCT	SCT
28	COASTAL ANDHRA PRADESH	ISOL	ISOL	ISOL	ISOL	ISOL	ISOL	ISOL
29	TELANGANA	ISOL	ISOL	ISOL	ISOL	ISOL	ISOL	ISOL
30	RAYALASEEMA	ISOL	ISOL	ISOL	ISOL	ISOL	ISOL	ISOL
31	TAMILNADU & PUDUCHERRY	ISOL	ISOL	ISOL	ISOL	SCT	SCT	SCT
32	COSTAL KARNATAKA	WS	WS	WS	WS	WS	WS	WS
33	NORTH INTERIOR KARNATAKA	SCT	SCT	SCT	ISOL	ISOL	ISOL	ISOL
34	SOUTH INTERIOR KARNATAKA	SCT	SCT	SCT	SCT	SCT	SCT	SCT
35	KERALA	WS	WS	WS	FWS	FWS	FWS	FWS
36	LAKSHDWEEP	WS	WS	WS	FWS	FWS	FWS	FWS

Legend	Category	%Stations
WS	Widespread/Most Places	76-100
FWS	Fairly Widespread/Many Places	51-75
SCT	Scattered/ A Few Places	26-50
ISOL	Isolated Places	1-25
DRY	No Rain	0

***Red color warning does not mean "Red Alert" Red color warning means "Take Action"**
Forecast and warning for any day is valid from 0830 hours IST of day till 0830 hours IST of next day
For more details kindly visit <https://mausam.imd.gov.in> or contact 011-2434-4599

(Service to the nation since 1875)

Fig. 1: Maximum Temperatures Dated 2025-07-27

Fig. 2: Departure of Maximum Temp. Dated 2025-07-27

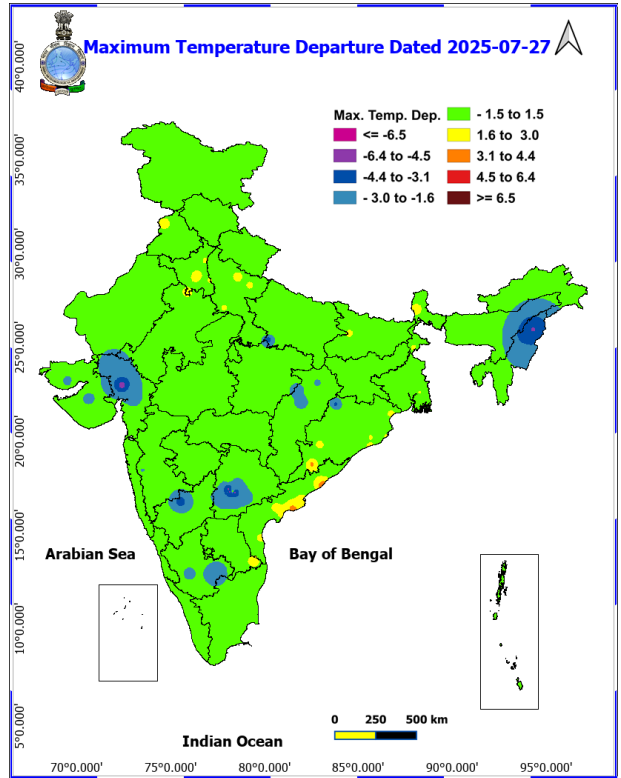
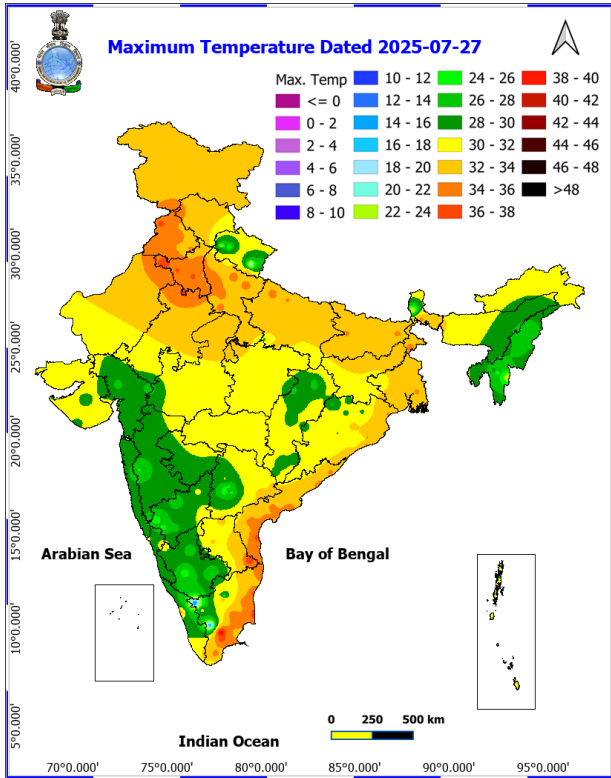
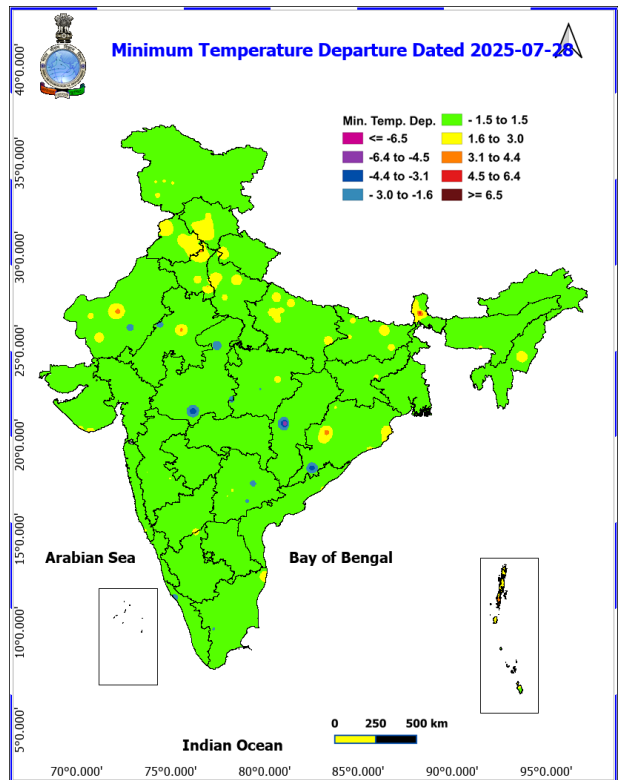
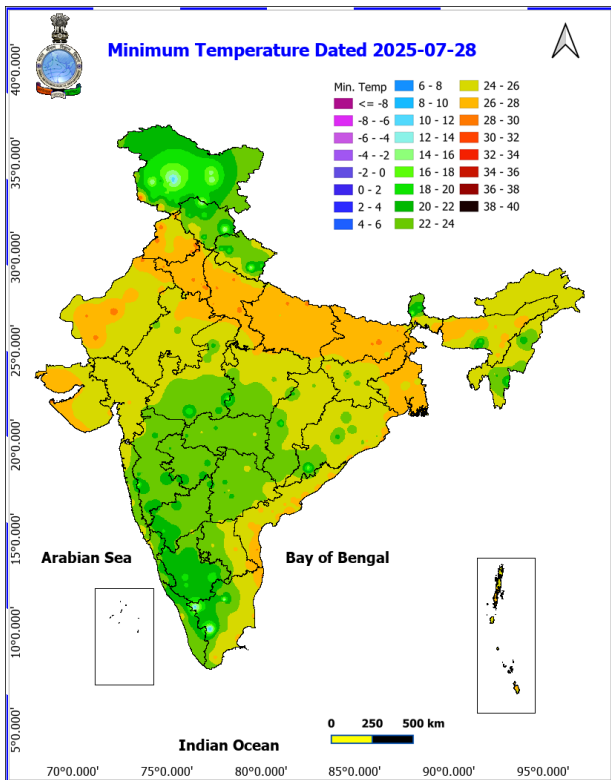


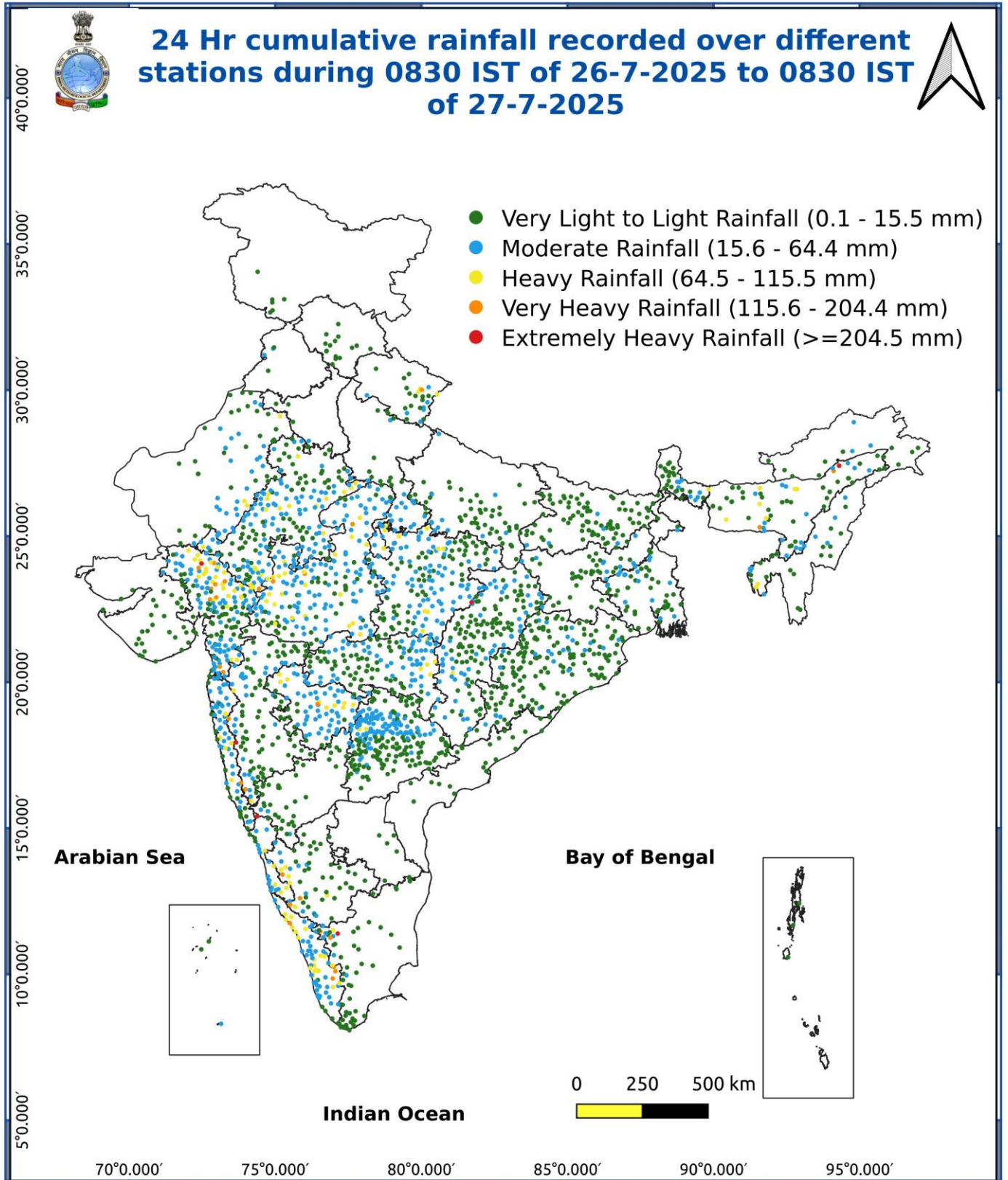
Fig. 3: Minimum Temperatures Dated 2025-07-27

Fig. 4: Departure of Minimum Temp. Dated 2025-07-27



***Red color warning does not mean "Red Alert" Red color warning means "Take Action"**
Forecast and warning for any day is valid from 0830 hours IST of day till 0830 hours IST of next day
For more details kindly visit <https://mausam.imd.gov.in> or contact 011-2434-4599

(Service to the nation since 1875)



- ♦ **Extremely heavy rainfall** very likely at isolated places over East Rajasthan on 28th; Nagaland, Manipur, Mizoram & Tripura on 01st & 02nd August.
- ♦ Isolated **very heavy rainfall** over Ghat areas of Madhya Maharashtra, South Interior Karnataka on 28th; Gujarat Region, West Uttar Pradesh on 28th; Himachal Pradesh on 29th; Uttarakhand during 28th-30th; Jammu & Kashmir on 30th; East Rajasthan during 28th-31st; Arunachal Pradesh, Assam & Meghalaya during 28th July-02nd August; Coastal Karnataka, Madhya Pradesh on 28th & 29th; Sub-Himalayan West Bengal & Sikkim on 02nd August.

Impact Expected

Localized Flooding of roads, water logging in low lying areas and closure of underpasses mainly in urban areas of the above region.

Occasional reduction in visibility due to heavy rainfall.

Disruption of traffic in major cities due to water logging in roads leading to increased travel time.

Minor damage to kutcha roads.

Possibilities of damage to vulnerable structure.

Localized Landslides/Mudslides/landslips/mudslips/landsinks/mudsinks.

Damage to horticulture and standing crops in some areas due to inundation.

It may lead to riverine flooding in some river catchments (for riverine flooding please visit Web page of CWC)

Action Suggested

Check for traffic congestion on your route before leaving for your destination.

Follow any traffic advisories that are issued in this regard.

Avoid going to areas that face the water logging problems often.

Avoid staying in vulnerable structure.

Agromet advisories for various parts of the country

Agromet advisories for likely impact of Heavy / Heavy to Very Heavy / Extremely Heavy Rainfall

(Based on the IBF and advisories issued by different AMFUs)

In **East Rajasthan**, postpone sowing of green gram, pearl millet, cluster bean and sesame till cessation of heavy rains and make arrangement for removal of excess water from already sown fields in **Sub Humid Southern Plain and Aravali Hill Zone** and **Flood Prone Eastern Plain Zone**. In **Southern Humid Plain Zone**, postpone sowing of maize till cessation of heavy rains and ensure proper drainage in cotton and soybean fields to remove excess water. Make provision to drain out excess water from rice nurseries, fields of maize, soybean and black gram in **Southeastern Humid Plain zone** and fields of pearl millet and groundnut in **Semi Arid Eastern Plain Zone**.

In **Madhya Pradesh**, provide adequate drainage in the fields of soybean and maize in **Malwa Plateau Zone**; rice, maize and soybean in **Kymore Plateau and Satpura Hill Zone**; soybean, rice, maize and pigeon pea in **Vindhyan**

***Red color warning does not mean "Red Alert" Red color warning means "Take Action"**

Forecast and warning for any day is valid from 0830 hours IST of day till 0830 hours IST of next day

For more details kindly visit <https://mausam.imd.gov.in> or contact 011-2434-4599

(Service to the nation since 1875)

Plateau Zone; rice and vegetables in **Bundelkhand Zone;** maize, soybean, cotton, sugarcane and vegetables in **Satpura Plateau Zone;** soybean, maize, cotton and black gram in **Jhabua Hills Zone;** rice, soybean, maize, sugarcane and vegetables in **Central Narmada Valley Zone** and soybean, pigeon pea, cotton and vegetables in **Nimar Valley Zone.** In **Gird Zone,** postpone sowing of pearl millet and make arrangement to drain out excess water in fields of soybean, pigeon pea and transplanted rice.

In **Chhattisgarh,** avoid sowing of pigeon pea during spells of heavy rainfall. Drain out excess water from rice nurseries, fields of soybean, pigeon pea, green gram, black gram, maize, sugarcane and vegetables in **Plain Zone;** fields of rice, minor millets, maize, pulses and oilseeds in **Bastar Plateau Zone** and fields of pigeon pea, vegetables and transplanted rice in **North Hill Zone.**

In **Maharashtra,** make arrangement to drain out excess water from rice, finger millet, turmeric, groundnut and newly planted coconut, arecanut, mango and cashew in **Konkan;** rice and finger millet fields in **ghat areas** of **Madhya Maharashtra;** soybean, pearl millet, turmeric, sugarcane, orchards and vegetables in **Marathwada** and rice nurseries, orchards, vegetable nurseries, transplanted rice fields and already sown *kharif* crops like soybean, cotton and pigeon pea in **East Vidarbha.** Postpone transplanting of rice in **ghat areas** of **Pune** and **Nashik** districts and **Raigad** and **Palghar** districts.

In **Gujarat,** make necessary arrangements to drain out excess water from fields of groundnut, maize, pearl millet, green gram and sesame in **North Gujarat Zone;** transplanted rice, cotton, pearl millet, pigeon pea, soybean and vegetables in **Middle Gujarat Zone;** sugarcane, rice and vegetables in **South Gujarat Heavy Rainfall Zone** and sugarcane, cotton, pigeon pea, transplanted rice and vegetables in **South Gujarat Zone.**

In **Uttarakhand,** maintain proper drainage channels in fields of rice in **Bhabar and Tarai Zone,** black gram in **Hill Zone** and rice, barnyard millet, finger millet and cucumber in **Sub Humid SubTropic Zone.**

In **Karnataka,** postpone nursery sowing of rice and provide drainage in arecanut fields and banana orchards in **Coastal Zone.** In **Hill Zone,** make arrangements to drain out excess water from rice nurseries, fields of maize, cotton, ginger and plantations of arecanut. In **Southern Transition Zone,** provide proper drainage in arecanut and coconut fields. In **Southern Dry Zone,** provide staking / support to maize, tomato and banana crop. Ensure proper drainage to prevent waterlogging especially in rice, vegetables and spice crops.

In **Kerala,** provide adequate drainage in fields of rice, coconut, banana and ginger. Postpone nursery / transplanting of rice. Provide staking in vegetables.

In **Arunachal Pradesh,** harvest matured soybean immediately and store in safer place. Postpone sowing / transplanting of millet and transplanting of rice during heavy rainfall. Maintain drainage in already sown / transplanted finger millet, orchards, fields of vegetables and transplanted rice.

In **Assam,** to avoid waterlogging ensure proper drainage in fields of *Sali* rice, sugarcane, sesame and fruit orchards in **Hill Zone;** jute and *Sali* rice fields in **Lower Brahmaputra Valley Zone;** *Sali* rice fields and arecanut plantations in **Upper Brahmaputra Valley Zone;** *Sali* rice fields in **Barak Valley Zone** and *Sali* rice nurseries, fields of maize, jute, sugarcane, vegetables and transplanted *Sali* rice in **Central Brahmaputra Valley Zone.**

In **Meghalaya,** avoid sowing of rice in nurseries especially in valley lands. Maintain proper drainage channels around the nursery beds. Make provision for draining out excess water from vegetable fields and repair bunds in lowland paddy fields.

In **Tripura,** drain out excess water from early transplanted *Sali* rice fields. Clean the drainage channels in rice and vegetable fields to ensure quick removal of excess water.

In **Manipur,** provide adequate drainage in fields of soybean, groundnut, finger millet, maize, black gram, ginger, turmeric, vegetables and fruit orchards.

In **Nagaland,** provide proper drainage channels in fields of maize and ginger to avoid water stagnation.

***Red color warning does not mean "Red Alert" Red color warning means "Take Action"**

Forecast and warning for any day is valid from 0830 hours IST of day till 0830 hours IST of next day

For more details kindly visit <https://mausam.imd.gov.in> or contact 011-2434-4599

(Service to the nation since 1875)

In **Mizoram**, harvest matured cobs of maize. Create strong bunds around rice fields to retain rainwater and reduce runoff.

Livestock / Fishery

Keep the animals inside the shed during heavy rainfall and provide them balanced feed.

Store feed and fodder in a safe place to prevent spoilage.

Construct an outlet with proper netting around the ponds to drain out excess water, thereby preventing fish from escaping in case of overflow.

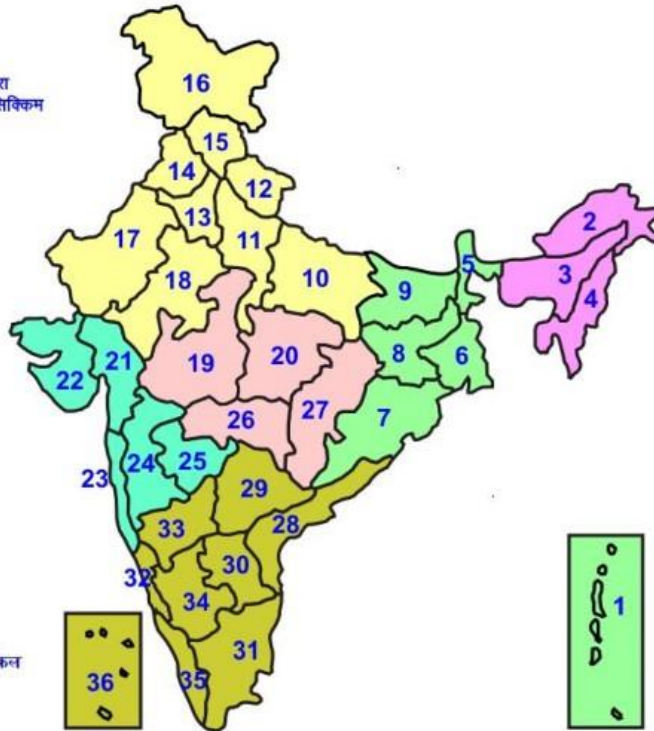
Agromet advisories for likely impact of Thunderstorm / Gusty Winds / Squally Winds

(Based on the IBF and advisories issued by different AMFUs)

Provide mechanical support to horticultural crops and staking or support to vegetables and young fruit plants / fruit-bearing plants to avoid lodging due to strong winds.

LEGENDS

- 1 अंडमान और निकोबार द्वीप समुह
- 2 अरुणाचल प्रदेश
- 3 असम और मेघालय
- 4 नागालैंड मनीपुर मीजोरम और त्रिपुरा
- 5 उप हिमालय पश्चिम बंगाल एवं सिक्किम
- 6 पश्चिम बंगाल
- 7 ओडिसा
- 8 झारखंड
- 9 बिहार
- 10 पूर्वी उत्तर प्रदेश
- 11 पश्चिम उत्तर प्रदेश
- 12 उत्तराखंड
- 13 हरियाणा चंडिगढ़ एवं दिल्ली
- 14 पंजाब
- 15 हिमाचल प्रदेश
- 16 जम्मू एवं कश्मीर एवं लद्दाख
- 17 पश्चिम राजस्थान
- 18 पूर्वी राजस्थान
- 19 पश्चिम मध्य प्रदेश
- 20 पूर्वी मध्य प्रदेश
- 21 गुजरात क्षेत्र
- 22 सौराष्ट्र एवं कच्छ
- 23 कोंकण एवं गोवा
- 24 मध्य महाराष्ट्र
- 25 मराठावाडा
- 26 विदर्भ
- 27 छत्तीसगढ़
- 28 तटीय आंध्र प्रदेश एवं यनम
- 29 तेलंगाना
- 30 रायलसीमा
- 31 तमिलनाडु, पुदुचेरी एवं कराईकल
- 32 तटिय कर्नाटक
- 33 आंतरिक उत्तरी कर्नाटक
- 34 आंतरिक दक्षिणी कर्नाटक
- 35 केरल एवं माहे
- 36 लक्षद्वीप



1. Andaman & Nicobar Islands
2. Arunachal Pradesh
3. Assam & Meghalaya
4. Nagaland, Manipur, Mizoram & Tripura
5. Sub-Himalayan West Bengal & Sikkim
6. Gangetic West Bengal
7. Orissa
8. Jharkhand
9. Bihar
10. East Uttar Pradesh
11. West Uttar Pradesh
12. Uttarakhand
13. Haryana, Chd & Delhi
14. Punjab
15. Himachal Pradesh
16. Jammu & Kashmir and Ladakh
17. West Rajasthan
18. East Rajasthan
19. West Madhya Pradesh
20. East Madhya Pradesh
21. Gujarat
22. Saurashtra
23. Konkan & Goa
24. Madhya Maharashtra
25. Marathwada
26. Vidharbha
27. Chhattisgarh
28. Coastal Andhra Pradesh & Yanam
29. Telangana
30. Rayalaseema
31. Tamilnadu, Puducherry & Karaikal
32. Coastal Karnataka
33. North Interior Karnataka
34. South Interior Karnataka
35. Kerala & Mahe
36. Lakshadweep

SPATIAL DISTRIBUTION (% of Stations reporting)

% Stations	Category	% Stations	Category
76-100	Widespread (WS/ Most Places)	26-50	Scattered (SCT/ A Few Places)
51-75	Fairly Widespread (FWS/ Many Places)	1-25	Isolated (ISOL)

Subdivision Colour

- NO WARNING
- WATCH (BE UPDATED)
- ALERT (BE PREPARED TO TAKE ACTION)
- WARNING (TAKE ACTION)

Probabilistic Forecast

Terms	Probability of Occurrence (%)
Unlikely	< 25
Likely	25 - 50
Very Likely	50 - 75
Most Likely	> 75

- | | | | |
|--------------------------|-----------------|----------------------|--------------------|
| Heavy Rain | Very Heavy Rain | Extremely Heavy Rain | Heavy Snow |
| Thunderstorm & Lightning | Hailstrom | Dust Storm | Dust Raising Winds |
| Strong surface winds | Heat Wave | Hot Day | Warm Night |
| Cold Wave | Cold Day | Ground Frost | Fog |
| Hot & Humid | | | |

*Red color warning does not mean "Red Alert" Red color warning means "Take Action"

Forecast and warning for any day is valid from 0830 hours IST of day till 0830 hours IST of next day

For more details kindly visit <https://mausam.imd.gov.in> or contact 011-2434-4599

(Service to the nation since 1875)

LEGENDS

WARNING

WARNING (TAKE ACTION)
ALERT (BE PREPARED)
WATCH (BE UPDATED)
NO WARNING (NO ACTION)

Probabilistic Forecast

Terms	Probability of Occurrence (%)
Unlikely	< 25
Likely	25 - 50
Very Likely	50 - 75
Most Likely	> 75



Heavy: 64.5 to 115.5 mm/cm *
Very Heavy: 115.6 to 204.4 mm/cm*
Extremely Heavy: > 204.4 mm/cm *



When maximum temperature of a station reaches $\geq 40^{\circ}\text{C}$ for plains and $\geq 30^{\circ}\text{C}$ for hilly regions
(a) Based on Departure from normal

Heat Wave: Maximum Temperature Departure from normal 4.5°C to 6.4°C .
Severe Heat Wave: Maximum Temperature Departure from normal $\geq 6.5^{\circ}\text{C}$

(b). Based on Actual maximum temperature

Heat Wave: When actual maximum temperature $\geq 45^{\circ}\text{C}$.
Severe Heat Wave: When actual maximum temperature $\geq 47^{\circ}\text{C}$

(c). Criteria for heat wave for coastal stations

When maximum temperature departure is $> 4.5^{\circ}\text{C}$ from normal. Heat Wave may be described provided maximum temperature $\geq 37^{\circ}\text{C}$



When maximum temperature remains 40°C

Warm Night: When minimum temperature departure 4.5°C to 6.4°C .
Severe Warm Night: When minimum temperature departure $> 6.4^{\circ}\text{C}$.



When minimum temperature of a station $\leq 10^{\circ}\text{C}$ for plains and $\leq 0^{\circ}\text{C}$ for hilly regions.

(a). Based on departure

Cold Wave: Minimum Temperature Departure from normal -4.5°C to -6.4°C .
Severe Cold Wave: Minimum Temperature Departure from normal $\leq -6.5^{\circ}\text{C}$

(b) Based on actual Minimum Temperature (for Plains only)

Cold Wave : When Minimum Temperature is $\leq 4.0^{\circ}\text{C}$
Severe Cold Wave: When Minimum Temperature is $\leq 2.0^{\circ}\text{C}$

(c) For Coastal Stations

When Minimum Temperature departure is $\leq -4.5^{\circ}\text{C}$ & actual Minimum Temperature is $\leq 15^{\circ}\text{C}$



When minimum temperature of a station $\leq 10^{\circ}\text{C}$ for plains and $\leq 0^{\circ}\text{C}$ for hilly regions
Based on departure

Cold Day: Maximum Temperature Departure from normal -4.5°C to -6.4°C .
Severe Cold Day: Maximum Temperature Departure from normal $\leq -6.5^{\circ}\text{C}$



Phenomenon of small droplets suspended in air and the horizontal visibility $< 1\text{km}$

Moderate Fog: When the visibility between 500-200 metres
Dense Fog: when the visibility between 50- 200 metres
Very Dense Fog: when the visibility < 50 metres



Sudden electrical discharges manifested by a flash of light (Lightning) and a sharp rumbling sound (thunder)



An ensemble of particles of dust or sand energetically lifted to great heights by a strong and turbulent wind.



Ice deposits on ground

Air temperature $\leq 4^{\circ}\text{C}$ (over Plains)



A strong wind that rises suddenly, lasts for atleast 1 minute.

Moderate: Wind speed 52-61 kmph
Severe: Wind speed 62-87 kmph
Very Severe: Wind speed > 87 kmph



Effect of various waves in the sea over specific area

Rough to very rough: Wind speed 41-62 kmph (22-33 knots) & Wave height 2.5-6 metre
High to very high: Wind speed 63-117 kmph (34-63 knots) & Wave height 6-14 metre
Phenomenal: Wind speed > 117 kmph (> 63 knots) & Wave height > 14 metre



Cyclonic Storm: Wind speed 62-87 kmph (34-47 knots)

Severe Cyclonic Storm: Wind speed 88-117 kmph (48-63 knots)
Very Severe Cyclonic Storm: Wind speed 118-165 kmph (64 - 89 knots)
Extremely Severe Cyclonic Storm: Wind speed 166-220 kmph (90 -119 knots)
Super Cyclone Storm: Wind speed > 220 kmph (> 119 knots)