

2025-08-02

Time of Issue: 07:57:00 hours IST
(Morning)

ALL INDIA WEATHER SUMMARY AND FORECAST BULLETIN

Significant Weather Features

Weather Forecast and Warnings

Northeast India:

- **Extremely heavy rainfall** very likely at isolated places over Meghalaya on 02nd & 03rd; Arunachal Pradesh on 03rd August.
- Light/moderate rainfall at many places accompanied with thunderstorm, lightning and isolated **heavy rainfall** likely to continue over Arunachal Pradesh, Assam & Meghalaya and Nagaland, Manipur, Mizoram & Tripura during 02nd-08th August with isolated **very heavy rainfall** over Arunachal Pradesh during 02nd-08th August; Assam & Meghalaya during 02nd-04th August.

East & Central India:

- **Extremely heavy rainfall** very likely at isolated places over Sub-Himalayan West Bengal & Sikkim on 02nd & 03rd and Bihar on 03rd August.
- Isolated **heavy rainfall** likely over Sub-Himalayan West Bengal & Sikkim during 02nd-08th; Gangetic West Bengal on 07th & 08th; Jharkhand, Chhattisgarh on 02nd; Bihar during 02nd-05th; West Madhya Pradesh during 03rd-05th; East Madhya Pradesh on 03rd & 04th August with isolated **very heavy rainfall** over Sub-Himalayan West Bengal & Sikkim during 02nd-04th; West Madhya Pradesh on 04th & 05th; Bihar on 02nd & 03rd August.
- Light to moderate rainfall at most/many places accompanied with thunderstorm & lightning likely over the region during next 5 days.

Northwest India:

- Isolated **heavy rainfall** likely over Jammu-Kashmir during 04th-06th August; Himachal Pradesh, Haryana during 02nd-05th; Uttarakhand during 02nd-08th; Punjab on 03rd & 04th; Uttar Pradesh during 02nd-05th; East Rajasthan during 03rd-08th August with **very heavy rainfall** over East Rajasthan, West Uttar Pradesh on 04th; East Uttar Pradesh and Uttarakhand on 03rd & 04th August.
- Light/moderate rainfall at many places accompanied with thunderstorm & lightning likely over Western Himalayan region and many/some places over the plains during next 7 days.

South Peninsular India:

- Isolated **heavy rainfall** likely over Tamil Nadu during 02nd-08th; Kerala & Mahe during 02nd-06th; Coastal & South Interior Karnataka, Coastal Andhra Pradesh and Rayalaseema during 05th-08th August with **very heavy rainfall** over Tamil Nadu during 03rd-05th and Kerala & Mahe during 06th-08th August.
- Strong surface winds (speed reaching 40-50 kmph) very likely over South Peninsular India during next 4 days.
- Light to moderate rainfall at some/many places over Kerala & Mahe, Lakshadweep, Karnataka, Rayalaseema, Coastal Andhra Pradesh & Yanam and Telangana during next 7 days.

West India:

- Light to moderate rainfall at many/some places very likely over the region during next 6-7 days.

*Red color warning does not mean "Red Alert" Red color warning means "Take Action"

Forecast and warning for any day is valid from 0830 hours IST of day till 0830 hours IST of next day

For more details kindly visit <https://mausam.imd.gov.in> or contact 011-2434-4599

(Service to the nation since 1875)

Main Weather Observations:

Significant rainfall recorded(in cm) (from 0830 hours IST of yesterday to 0530 hours IST of today): **West Rajasthan:** Sriganaganagar (dist Sri Ganganagar) 11; **Tamilnadu Puducherry & Karaikal:** Cuddalore (dist Cuddalore) 7, Pondicherry (dist Puducherry) 4, Tondi (dist Ramanathapuram) 3; **Arunachal Pradesh:** Itanagar (dist Papum Pare) 7; **Assam & Meghalaya:** Tezpur (dist Sonitpur), North Lakhimpur (dist Lakhimpur) 6 Each, Silchar (dist Cachar) 3, Dibrugarh (dist Dibrugarh) 2; **Bihar:** Patna-airport (dist Patna), Bhagalpur (dist Bhagalpur) 3 Each; **Lakshadweep :** Amini Divi (dist Lakshadweep) 3; **Odisha:** Puri (dist Puri) 3; **Gangetic West Bengal:** Kolkata (dum Dum) AP, Digha (dist North 24 Parganas) 2 Each; **Punjab:** Patiala (dist Patiala) 2; **Jammu & Kashmir and Ladakh:** Bhaderwah (dist Doda) 2.

❖ **Heavy Rainfall observed** (from 0830 hours IST of yesterday to 0530 hours IST of today):**Heavy rain** at a few places over Arunachal Pradesh, at isolated places over West Rajasthan and Tamilnadu Puducherry & Karaikal.

❖ **Minimum Temperature Departures (as on 01-08-2025): markedly above normal(> 5.1°C)** at isolated places over Assam & Meghalaya, Bihar, East Uttar Pradesh, West Uttar Pradesh, Himachal Pradesh and Saurashtra & Kutch. **appreciably above normal(3.1°C to 5.0°C)** at isolated places over Sub Himalayan West Bengal & Sikkim, Odisha, West Madhya Pradesh, East Madhya Pradesh, Gujarat Region and Tamil Nadu, Puducherry & Karaikal. **above normal(1.6°C to 3.0°C)** at many places over Andaman & Nicobar Islands; at few places over Konkan & Goa and Coastal Andhra Pradesh & Yanam; at isolated places over Gangetic West Bengal, Uttarakhand, Jammu-KashmirLadakh-Gilgit-Baltistan-Muzaffarabad, Madhya Maharashtra, Marathwada, Vidarbha and Chhattisgarh. **near normal(-1.5°C to 1.5°C)** at many places over Haryana-Chandigarh-Delhi, West Rajasthan, East Rajasthan and Lakshadweep; at most places over Arunachal Pradesh, Nagaland, Manipur, Mizoram & Tripura, Jharkhand, Punjab, Telangana, Rayalaseema, Coastal Karnataka, North Interior Karnataka, South Interior Karnataka and Kerala & Mahe. **The lowest minimum temperature** of 18.2°C is reported at KHARGONE-OBS (MADHYA PRADESH) over the Plains of India.

❖ **Maximum Temperature Departures (as on 01-08-2025): markedly above normal(> 5.1°C)** at isolated places over Assam & Meghalaya and Odisha. **appreciably above normal(3.1°C to 5.0°C)** at few places over Coastal Andhra Pradesh & Yanam; at isolated places over Gangetic West Bengal, Madhya Maharashtra, Chhattisgarh and Tamil Nadu, Puducherry & Karaikal. **above normal(1.6°C to 3.0°C)** at many places over Marathwada and Coastal Karnataka; at most places over Vidarbha; at few places over Andaman & Nicobar Islands, Sub Himalayan West Bengal & Sikkim, Konkan & Goa, Telangana and Rayalaseema; at isolated places over East Uttar Pradesh, Uttarakhand, Jammu-KashmirLadakh-Gilgit-Baltistan-Muzaffarabad, Gujarat Region and Saurashtra & Kutch. **near normal(-1.5°C to 1.5°C)** at many places over Nagaland, Manipur, Mizoram & Tripura, Jharkhand, Bihar, West Uttar Pradesh and West Madhya Pradesh; at most places over Arunachal Pradesh, North Interior Karnataka and South Interior Karnataka; at few places over Himachal Pradesh, West Rajasthan, East Rajasthan, East Madhya Pradesh and Lakshadweep; at isolated places over Haryana-Chandigarh-Delhi. **The highest maximum temperature** of 40.5°C is reported at MADURAI (A) (TAMIL NADU).

***Red color warning does not mean "Red Alert" Red color warning means "Take Action"**

Forecast and warning for any day is valid from 0830 hours IST of day till 0830 hours IST of next day

For more details kindly visit <https://mausam.imd.gov.in> or contact 011-2434-4599

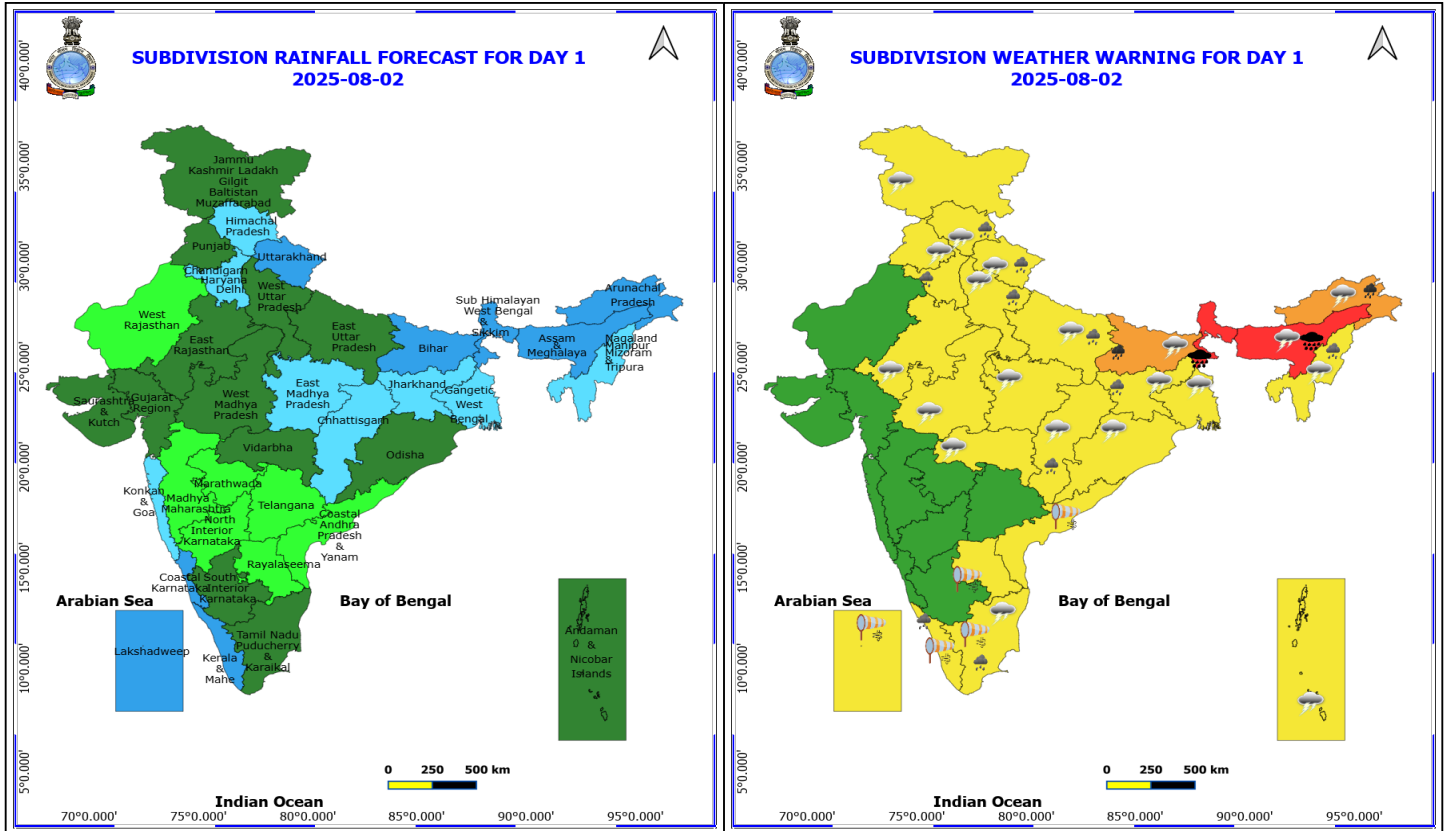
(Service to the nation since 1875)

Meteorological Analysis (Based on 0530 hours IST)

- The **monsoon trough** at mean sea level now passes through Bhatinda, Bareilly, Lucknow, Patna, Bankura, Digha and thence east-southeastwards to the northeast Bay of Bengal.
- The **upper air cyclonic circulation** over Sub-Himalayan West Bengal & Sikkim & neighbourhood persists and extended upto 7.6 km above mean sea level tilting southwestwards with height.
- The **upper air cyclonic circulation** over Haryana & neighbourhood lay over Punjab & neighbourhood extending upto 3.1 km above mean sea level.
- The **Western Disturbance** as a trough in middle & upper tropospheric levels with its axis at 5.8 km above mean sea level roughly along Long. 72°E to the north of Lat. 32°N persists.
- The **upper air cyclonic circulation** over East Uttar Pradesh & neighbourhood extending upto 1.5 km above mean sea level has become less marked.

Weather Outlook for subsequent 3 days

- Fairly widespread to widespread rainfall likely over the most parts of the country except Madhya Maharashtra and Marathwada where Isolated rainfall is likely.



2 August (Day 1)

- ❖ **Heavy to Very Heavy Rainfall with isolated Extremely Heavy Rainfall** very likely at isolated places over Assam & Meghalaya and Sub Himalayan West Bengal & Sikkim.
- ❖ **Heavy to Very Heavy Rainfall** very likely at isolated places over Arunachal Pradesh and Bihar.
- ❖ **Heavy Rainfall** very likely at isolated places over Chhattisgarh, Haryana, Chandigarh & Delhi, Himachal Pradesh, Jharkhand, Kerala & Mahe, Nagaland, Manipur, Mizoram and Tripura, Tamil Nadu Puducherry & Karaikal, Uttar Pradesh and Uttarakhand.
- ❖ **Thunderstorm accompanied with lightning & gusty winds(30-40kmph)** very likely at isolated places over Andaman & Nicobar Islands, Bihar, Gangetic West Bengal, Jharkhand, Punjab and West Madhya Pradesh.
- ❖ **Thunderstorm accompanied with Lightning** very likely at isolated places over Arunachal Pradesh, Assam & Meghalaya, Chhattisgarh, East Madhya Pradesh, East Rajasthan, Himachal Pradesh, Jammu-Kashmir-Ladakh-Gilgit-Baltistan-Muzaffarabad, Nagaland, Manipur, Mizoram and Tripura, Odisha, Tamil Nadu Puducherry & Karaikal, Uttar Pradesh, Uttarakhand and Vidarbha.
- ❖ **Strong Surface Winds** very likely at isolated places over Andhra Pradesh, Kerala & Mahe, Lakshadweep and Tamil Nadu Puducherry & Karaikal.

Squally wind with speed reaching 45 kmph to 55 kmph gusting to 65 kmph is likely to prevail along and off Somalia, Yemen & south Oman coasts, most parts of westcentral Arabian Sea & adjoining, some parts of eastcentral Arabian Sea, many parts of southwest Arabian Sea.

Squally weather with wind speed reaching 40 - 50 kmph gusting to 60 kmph likely to prevail over many parts of eastcentral Arabian Sea, some parts of southeast Arabian Sea, over Comorin area, over Gulf of Mannar, many parts

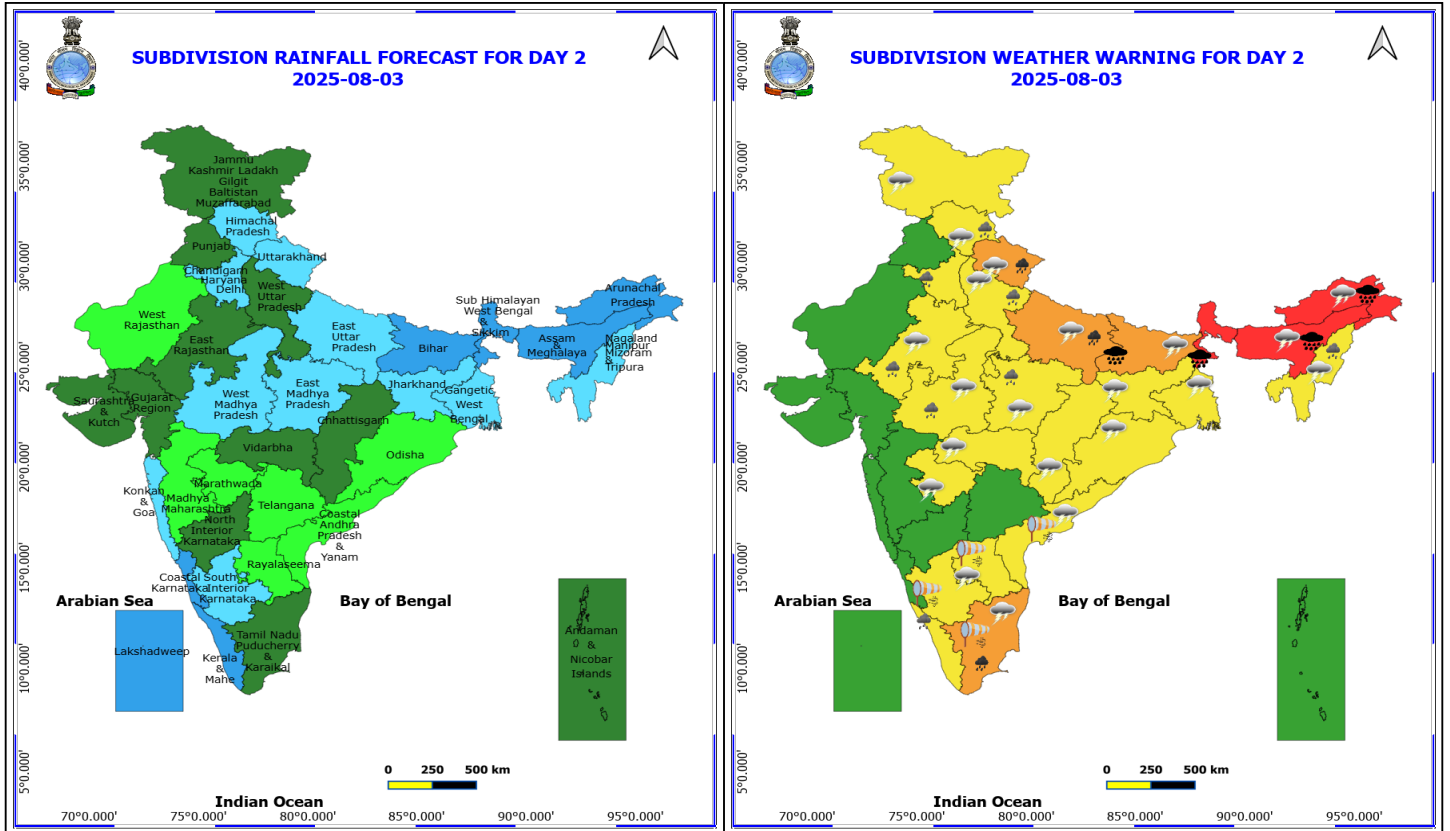
***Red color warning does not mean "Red Alert" Red color warning means "Take Action"**
Forecast and warning for any day is valid from 0830 hours IST of day till 0830 hours IST of next day
For more details kindly visit <https://mausam.imd.gov.in> or contact 011-2434-4599

(Service to the nation since 1875)



of southwest Bay of Bengal.

Squally weather with wind speed reaching 45 - 55 kmph gusting to 65 kmph likely to prevail over Lakshadweep area.



3 August (Day 2)

- ❖ **Heavy to Very Heavy Rainfall with isolated Extremely Heavy Rainfall** very likely at isolated places over Arunachal Pradesh, Assam & Meghalaya, Bihar and Sub Himalayan West Bengal & Sikkim.
- ❖ **Heavy to Very Heavy Rainfall** very likely at isolated places over East Uttar Pradesh, Tamil Nadu Puducherry & Karaikal and Uttarakhand.
- ❖ **Heavy Rainfall** very likely at isolated places over East Rajasthan, Haryana, Chandigarh & Delhi, Himachal Pradesh, Kerala & Mahe, Madhya Pradesh, Nagaland, Manipur, Mizoram and Tripura and West Uttar Pradesh.
- ❖ **Thunderstorm accompanied with lightning & gusty winds(30-40kmph)** very likely at isolated places over Bihar, Gangetic West Bengal, Jharkhand and West Madhya Pradesh.
- ❖ **Thunderstorm accompanied with Lightning** very likely at isolated places over Andhra Pradesh, Arunachal Pradesh, Assam & Meghalaya, Chhattisgarh, East Madhya Pradesh, East Rajasthan, Himachal Pradesh, Jammu-Kashmir-Ladakh-Gilgit-Baltistan-Muzaffarabad, Marathwada, Nagaland, Manipur, Mizoram and Tripura, Odisha, Tamil Nadu Puducherry & Karaikal, Uttar Pradesh, Uttarakhand and Vidarbha.
- ❖ **Strong Surface Winds** very likely at isolated places over Andhra Pradesh, South Interior Karnataka and Tamil Nadu Puducherry & Karaikal.

Squally wind with speed reaching 45 kmph to 55 kmph gusting to 65 kmph is likely to prevail along and off Somalia, Yemen & south Oman coasts, most parts of westcentral Arabian Sea & adjoining parts of eastcentral Arabian Sea, many parts of southwest Arabian Sea.

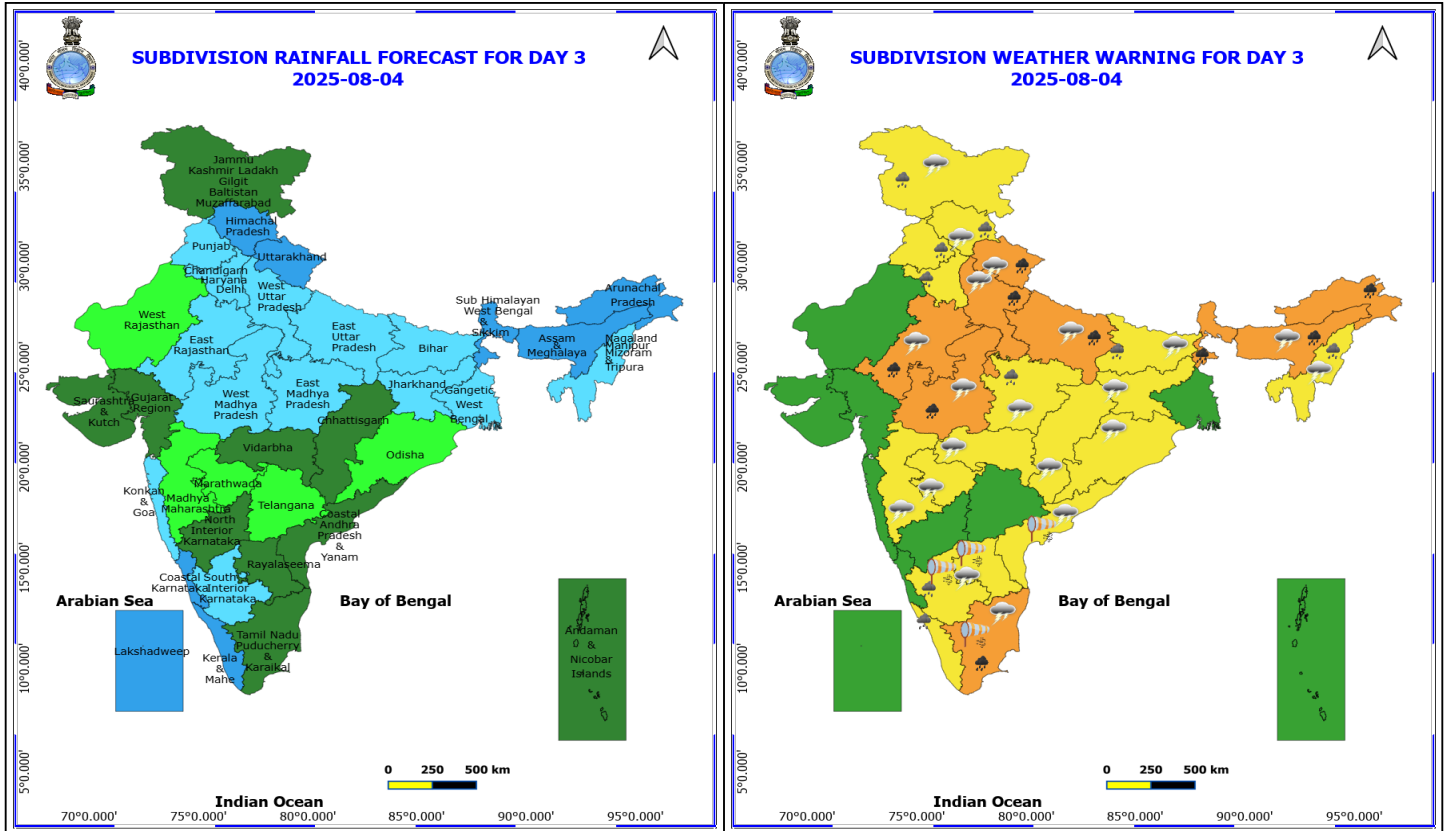
Squally weather with wind speed reaching 40 - 50 kmph gusting to 60 kmph likely to prevail over many parts of eastcentral Arabian Sea, some parts of southeast & southwest Arabian Sea, southern parts of north Arabian Sea,

***Red color warning does not mean "Red Alert" Red color warning means "Take Action"**
Forecast and warning for any day is valid from 0830 hours IST of day till 0830 hours IST of next day
For more details kindly visit <https://mausam.imd.gov.in> or contact 011-2434-4599

(Service to the nation since 1875)



over Gulf of Mannar & adjoining Comorin area, many parts of southwest Bay of Bengal, few parts of southeast Bay of Bengal & adjoining few parts of south Andaman Sea.



4 August (Day 3)

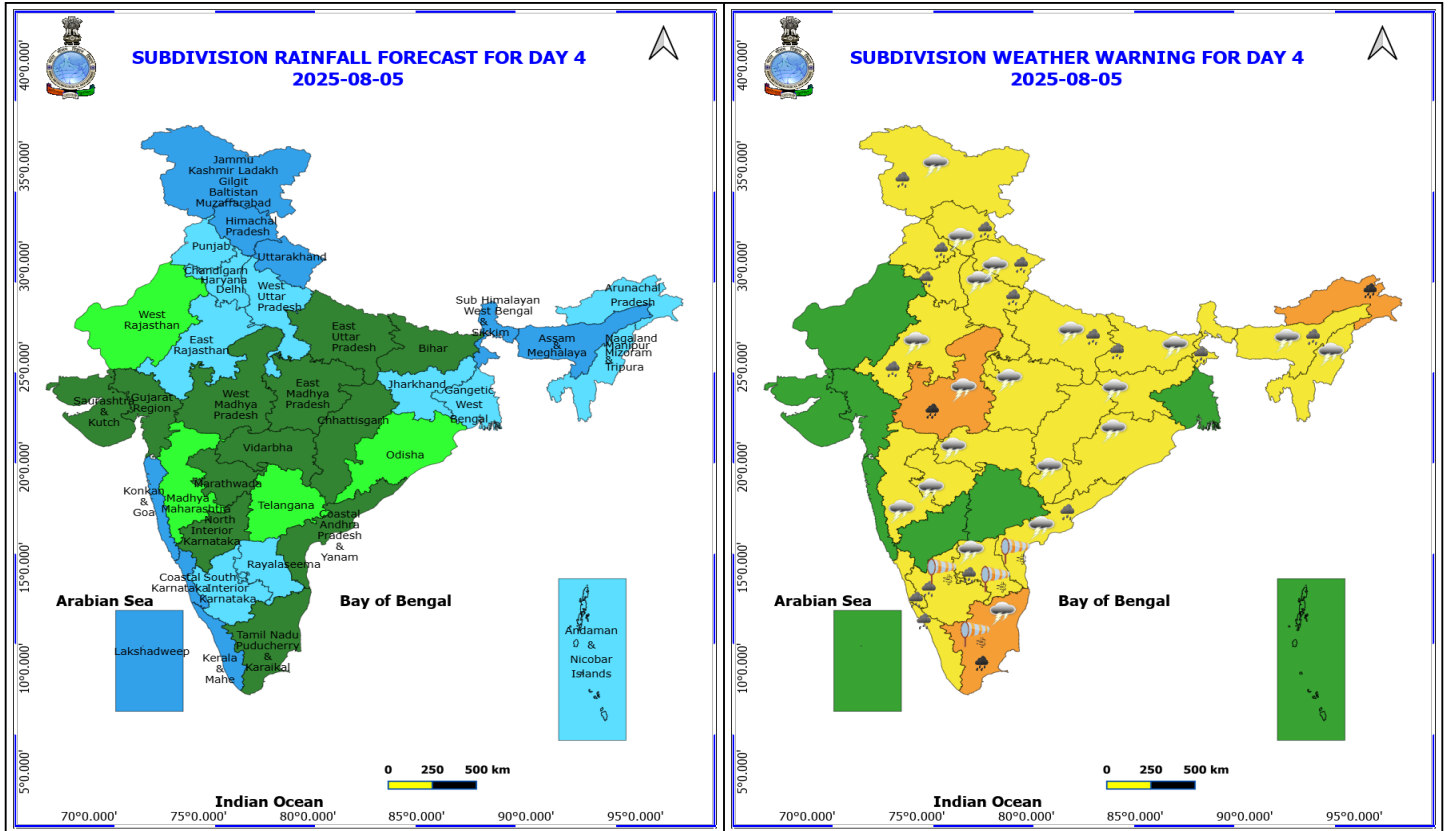
- ❖ **Heavy to Very Heavy Rainfall** very likely at isolated places over Arunachal Pradesh, Assam & Meghalaya, East Rajasthan, Sub Himalayan West Bengal & Sikkim, Tamil Nadu Puducherry & Karaikal, Uttar Pradesh, Uttarakhand and West Madhya Pradesh.
- ❖ **Heavy Rainfall** very likely at isolated places over Bihar, East Madhya Pradesh, Haryana, Chandigarh & Delhi, Himachal Pradesh, Jammu-Kashmir-Ladakh-Gilgit-Baltistan-Muzaffarabad, Kerala & Mahe, Nagaland, Manipur, Mizoram and Tripura, Punjab and South Interior Karnataka.
- ❖ **Thunderstorm accompanied with lightning & gusty winds(30-40kmph)** very likely at isolated places over Bihar, Jammu-Kashmir-Ladakh-Gilgit-Baltistan-Muzaffarabad, Jharkhand and West Madhya Pradesh.
- ❖ **Thunderstorm accompanied with Lightning** very likely at isolated places over Andhra Pradesh, Assam & Meghalaya, Chhattisgarh, East Madhya Pradesh, East Rajasthan, Himachal Pradesh, Maharashtra, Nagaland, Manipur, Mizoram and Tripura, Odisha, Tamil Nadu Puducherry & Karaikal, Uttar Pradesh and Uttarakhand.
- ❖ **Strong Surface Winds** very likely at isolated places over Andhra Pradesh, South Interior Karnataka and Tamil Nadu Puducherry & Karaikal.

Squally wind with speed reaching 45 kmph to 55 kmph gusting to 65 kmph is likely to prevail along and off Somalia, Yemen & south Oman coasts, most parts of westcentral Arabian Sea & adjoining parts of eastcentral Arabian Sea, many parts of southwest Arabian Sea.

Squally weather with wind speed reaching 40 - 50 kmph gusting to 60 kmph likely to prevail over many parts of eastcentral Arabian Sea, many parts of southeast and southwest Arabian Sea, over northeast & adjoining northwest Arabian Sea, along and off north Gujarat, Kerala, Karnataka coasts, over Lakshadweep, Maldives, Comorin areas, over Gulf of Mannar, many parts of southwest Bay of Bengal, few parts of southeast Bay of Bengal.

***Red color warning does not mean "Red Alert" Red color warning means "Take Action"**
Forecast and warning for any day is valid from 0830 hours IST of day till 0830 hours IST of next day
For more details kindly visit <https://mausam.imd.gov.in> or contact 011-2434-4599

(Service to the nation since 1875)



5 August (Day 4)

- ❖ **Heavy to Very Heavy Rainfall** likely at isolated places over Arunachal Pradesh, Tamil Nadu Puducherry & Karaikal and West Madhya Pradesh.
- ❖ **Heavy Rainfall** likely at isolated places over Andhra Pradesh, Assam & Meghalaya, Bihar, Coastal Karnataka, East Rajasthan, Haryana, Chandigarh & Delhi, Himachal Pradesh, Jammu-Kashmir-Ladakh-Gilgit-Baltistan-Muzaffarabad, Kerala & Mahe, Punjab, South Interior Karnataka, Sub Himalayan West Bengal & Sikkim, Uttar Pradesh and Uttarakhand.
- ❖ **Thunderstorm accompanied with lightning & gusty winds(30-40kmph)** likely at isolated places over Bihar, Jammu-Kashmir-Ladakh-Gilgit-Baltistan-Muzaffarabad, Jharkhand and West Madhya Pradesh.
- ❖ **Thunderstorm accompanied with Lightning** likely at isolated places over Andhra Pradesh, Assam & Meghalaya, Chhattisgarh, East Madhya Pradesh, East Rajasthan, Himachal Pradesh, Maharashtra, Nagaland, Manipur, Mizoram and Tripura, Odisha, Tamil Nadu Puducherry & Karaikal, Uttar Pradesh and Uttarakhand.
- ❖ **Strong Surface Winds** likely at isolated places over Andhra Pradesh, South Interior Karnataka and Tamil Nadu Puducherry & Karaikal.

Squally wind with speed reaching 45 kmph to 55 kmph gusting to 65 kmph is likely to prevail along and off Somalia, Yemen & south Oman coasts, most parts of westcentral Arabian Sea & adjoining parts of eastcentral Arabian Sea, southern parts of northwest Arabian Sea, many parts of southwest & southeast Arabian Sea.

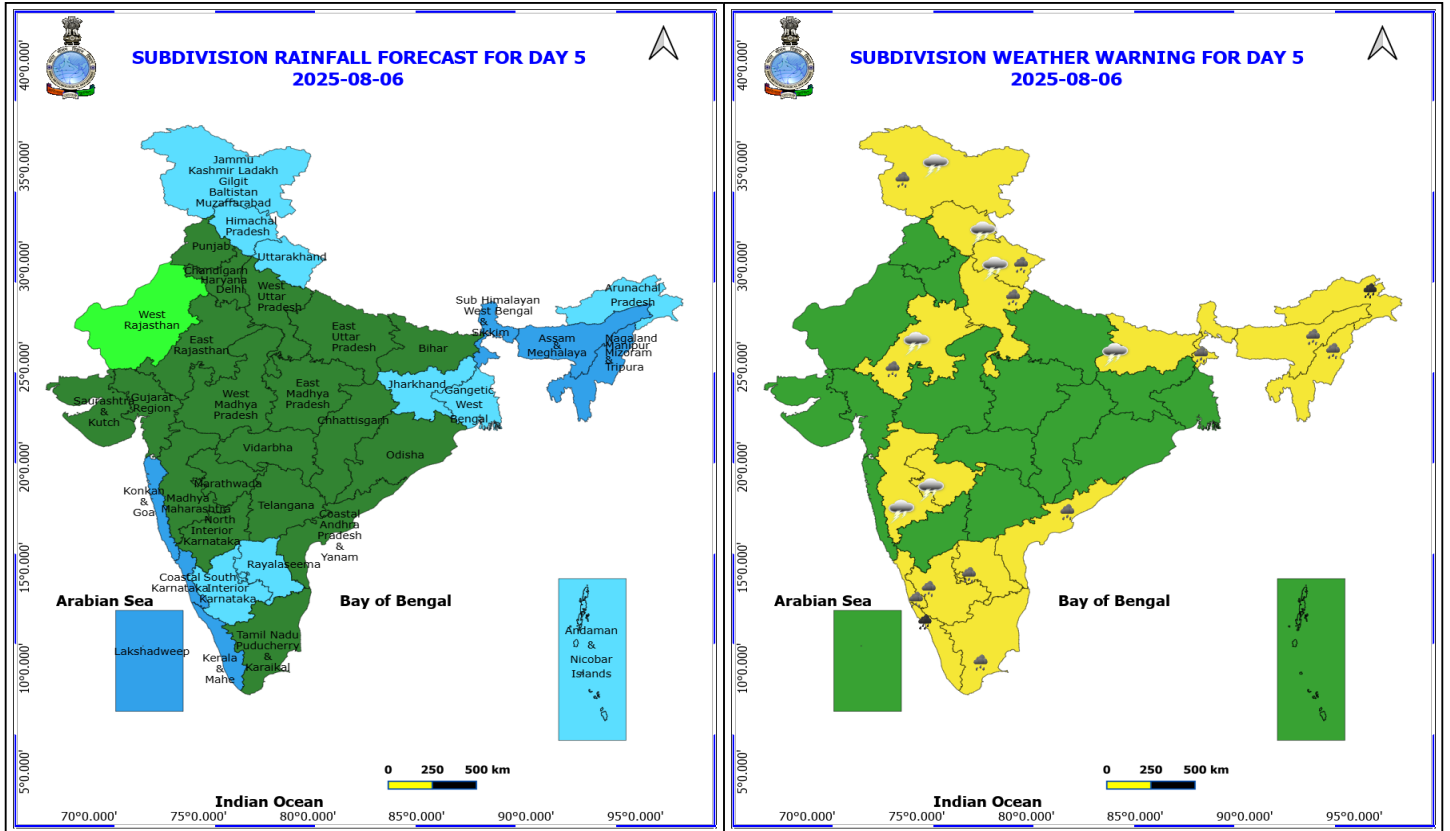
Squally weather with wind speed reaching 40 - 50 kmph gusting to 60 kmph likely to prevail over many parts of eastcentral Arabian Sea, many parts of southeast and southwest Arabian Sea, over northeast & adjoining northwest Arabian Sea, along and off north Gujarat, Kerala, Karnataka coasts, over Lakshadweep, Maldives, Comorin areas, over Gulf of Mannar, many parts of southwest Bay of Bengal.

***Red color warning does not mean "Red Alert" Red color warning means "Take Action"**

Forecast and warning for any day is valid from 0830 hours IST of day till 0830 hours IST of next day

For more details kindly visit <https://mausam.imd.gov.in> or contact 011-2434-4599

(Service to the nation since 1875)

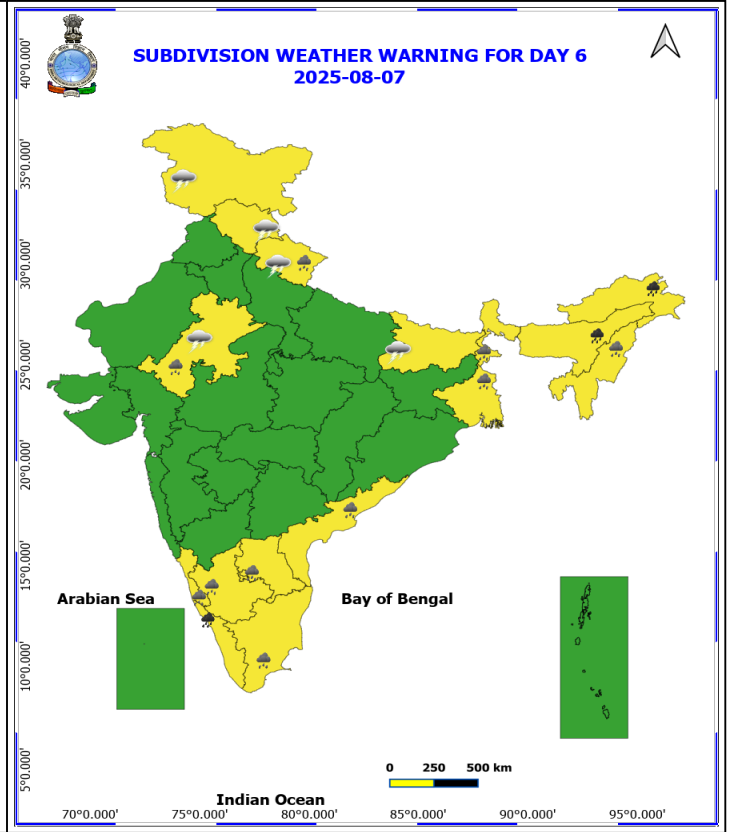
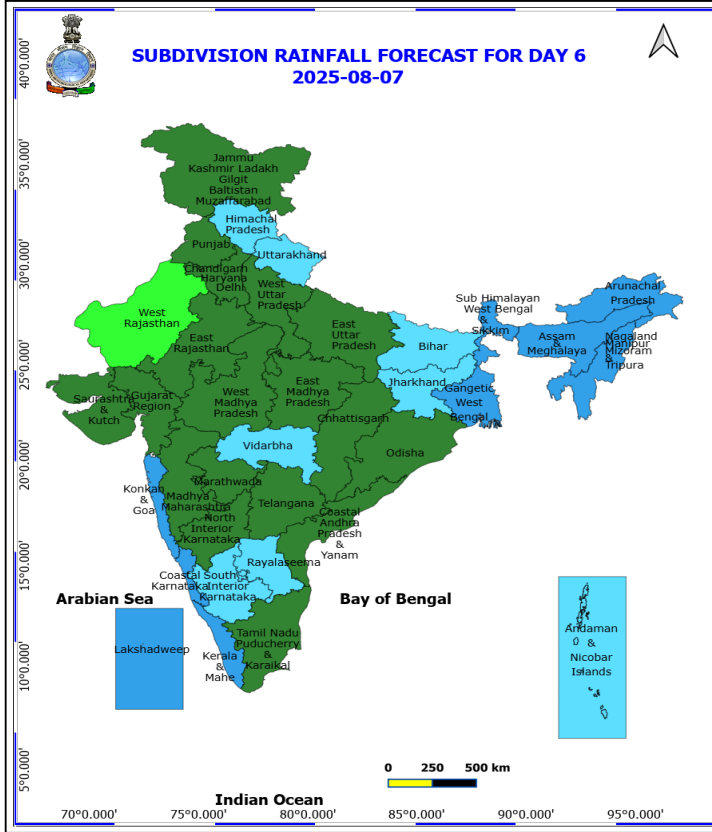


6 August (Day 5)

- ❖ **Heavy to Very Heavy Rainfall** likely at isolated places over Arunachal Pradesh and Kerala & Mahe.
- ❖ **Heavy Rainfall** likely at isolated places over Andhra Pradesh, Assam & Meghalaya, Coastal Karnataka, East Rajasthan, Jammu-Kashmir-Ladakh-Gilgit-Baltistan-Muzaffarabad, Nagaland, Manipur, Mizoram and Tripura, South Interior Karnataka, Sub Himalayan West Bengal & Sikkim, Tamil Nadu Puducherry & Karaikal, Uttarakhand and West Uttar Pradesh.
- ❖ **Thunderstorm accompanied with lightning & gusty winds(30-40kmph)** likely at isolated places over Bihar and Jammu-Kashmir-Ladakh-Gilgit-Baltistan-Muzaffarabad.
- ❖ **Thunderstorm accompanied with Lightning** likely at isolated places over East Rajasthan, Himachal Pradesh, Madhya Maharashtra, Marathwada and Uttarakhand.

Squally wind with speed reaching 45 kmph to 55 kmph gusting to 65 kmph is likely to prevail along and off Somalia, Yemen & south Oman coasts, most parts of westcentral Arabian Sea & adjoining parts of eastcentral Arabian Sea, southern parts of northwest Arabian Sea, many parts of southwest & southeast Arabian Sea.

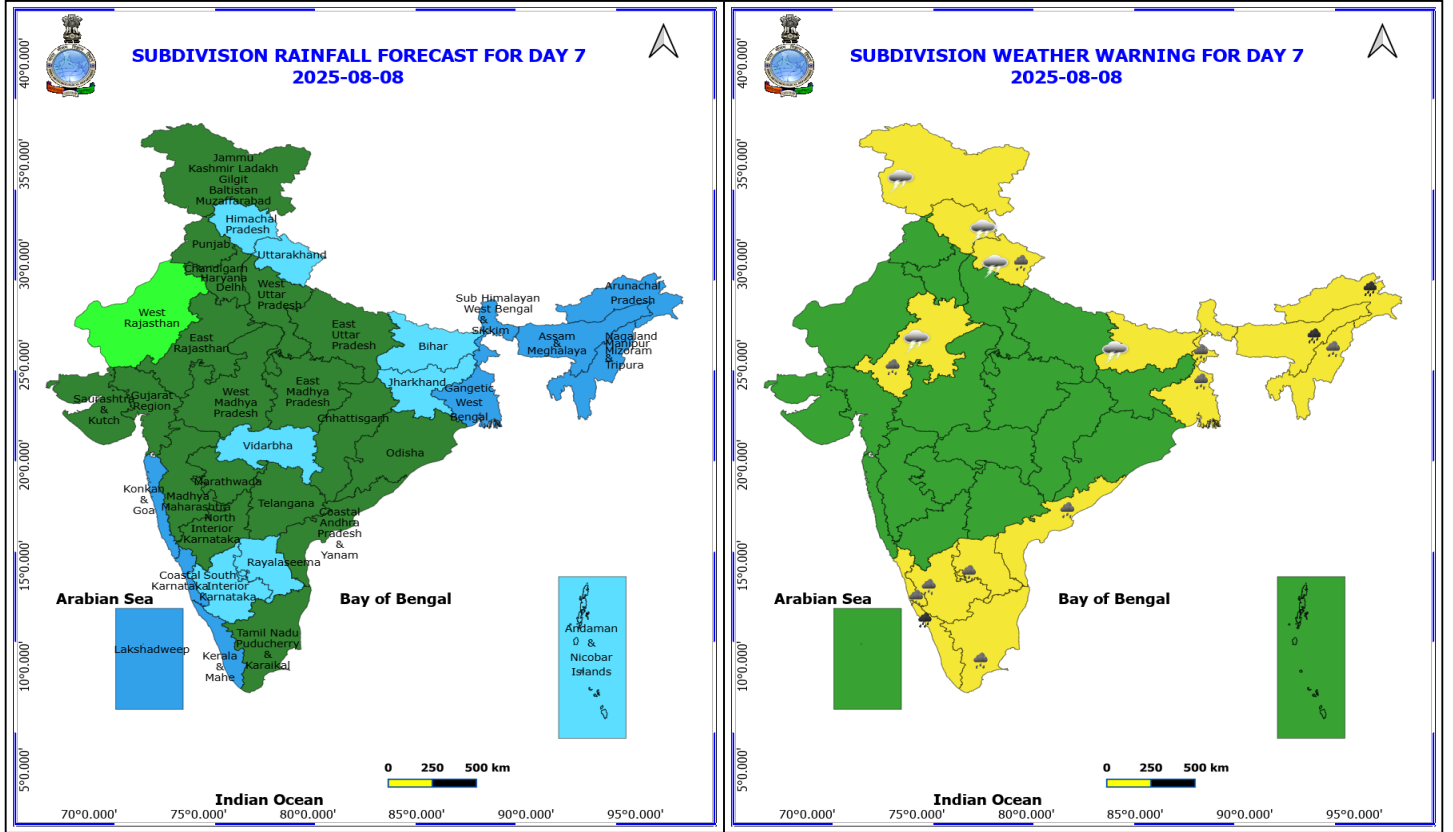
Squally weather with wind speed reaching 40 - 50 kmph gusting to 60 kmph likely to prevail over many parts of eastcentral Arabian Sea, many parts of southeast and southwest Arabian Sea, over northeast & adjoining northwest Arabian Sea, along and off north Gujarat, Kerala, Karnataka coasts, over Lakshadweep, Maldives, Comorin areas, over Gulf of Mannar, many parts of southwest Bay of Bengal.



7 August (Day 6)

- ❖ **Heavy to Very Heavy Rainfall** likely at isolated places over Arunachal Pradesh, Assam & Meghalaya and Kerala & Mahe.
- ❖ **Heavy Rainfall** likely at isolated places over Andhra Pradesh, Coastal Karnataka, East Rajasthan, Nagaland, Manipur, Mizoram and Tripura, South Interior Karnataka, Tamil Nadu Puducherry & Karaikal, Uttarakhand and West Bengal & Sikkim.
- ❖ **Thunderstorm accompanied with lightning & gusty winds(30-40kmph)** likely at isolated places over Bihar.
- ❖ **Thunderstorm accompanied with Lightning** likely at isolated places over East Rajasthan, Himachal Pradesh, Jammu-Kashmir-Ladakh-Gilgit-Baltistan-Muzaffarabad and Uttarakhand.

No Fishermen Warning



8 August (Day 7)

- ❖ **Heavy to Very Heavy Rainfall** likely at isolated places over Arunachal Pradesh, Assam & Meghalaya and Kerala & Mahe.
- ❖ **Heavy Rainfall** likely at isolated places over Andhra Pradesh, Coastal Karnataka, East Rajasthan, Nagaland, Manipur, Mizoram and Tripura, South Interior Karnataka, Tamil Nadu Puducherry & Karaikal, Uttarakhand and West Bengal & Sikkim.
- ❖ **Thunderstorm accompanied with lightning & gusty winds(30-40kmph)** likely at isolated places over Bihar.
- ❖ **Thunderstorm accompanied with Lightning** likely at isolated places over East Rajasthan, Himachal Pradesh, Jammu-Kashmir-Ladakh-Gilgit-Baltistan-Muzaffarabad and Uttarakhand.

No Fishermen Warning

***Red color warning does not mean "Red Alert" Red color warning means "Take Action"**
Forecast and warning for any day is valid from 0830 hours IST of day till 0830 hours IST of next day
For more details kindly visit <https://mausam.imd.gov.in> or contact 011-2434-4599

(Service to the nation since 1875)

Flash Flood Warnings

24 hours Outlook for the Flash Flood Risk (FFR) till 0530 IST of 03-08-2025 :

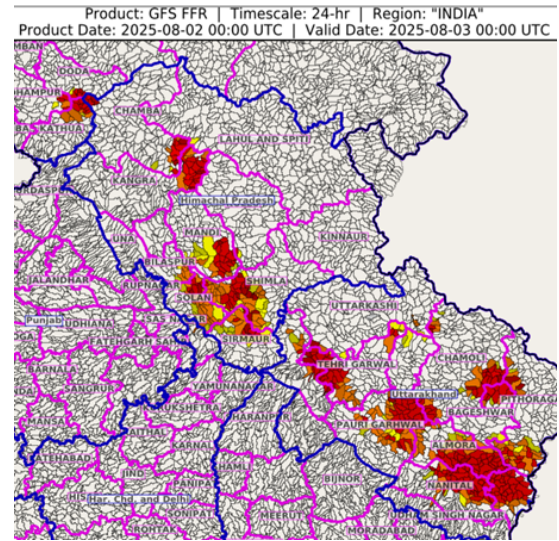
Low to Moderate flash flood risk likely over few watersheds & neighbourhoods of following Met Sub-divisions during next 24 hours.

Himachal Pradesh - Bilaspur, Chamba, Kangra, Kullu, Mandi, Shimla, Sirmaur and Solan districts.

Jammu & Kashmir & Ladakh - Doda, Kathua and Udhampur districts.

Uttarakhand - Almora, Bageshwar, Chamoli, Champawat, Nanital, Pauri Garhwal, Pithoragarh, Rudraprayag, Tehri Garwal and Uttarkashi districts.

Surface runoff/ Inundation may occur at some fully saturated soils & low-lying areas over Area of Concern (AoC) as shown in map due to expected rainfall occurrence in next 24 hours.



*Red color warning does not mean "Red Alert" Red color warning means "Take Action"

Forecast and warning for any day is valid from 0830 hours IST of day till 0830 hours IST of next day

For more details kindly visit <https://mausam.imd.gov.in> or contact 011-2434-4599

(Service to the nation since 1875)



Table-1

7 Days Rainfall Forecast

S.No.	Subdivision	2- Aug	3- Aug	4- Aug	5- Aug	6- Aug	7- Aug	8- Aug
		Day 1	Day 2	Day 3	Day 4	Day 5	Day 6	Day 7
1	ANDAMAN & NICOBAR ISLANDS	SCT	SCT	SCT	FWS	FWS	FWS	FWS
2	ARUNACHAL PRADESH	WS	WS	WS	FWS	FWS	WS	WS
3	ASSAM & MEHGHALAYA	WS	WS	WS	WS	WS	WS	WS
4	N. M. M. & T.	FWS	FWS	FWS	FWS	WS	WS	WS
5	S.H. WEST BENGAL & SIKKIM	WS	WS	WS	WS	WS	WS	WS
6	GANGETIC WEST BENGAL	FWS	FWS	FWS	FWS	FWS	WS	WS
7	ODISHA	SCT	ISOL	ISOL	ISOL	SCT	SCT	SCT
8	JHARKHAND	FWS	FWS	FWS	FWS	FWS	FWS	FWS
9	BIHAR	WS	WS	FWS	SCT	SCT	FWS	FWS
10	EAST UTTAR PRADESH	SCT	FWS	FWS	SCT	SCT	SCT	SCT
11	WEST UTTAR PRADESH	SCT	SCT	FWS	FWS	SCT	SCT	SCT
12	UTTARAKHAND	WS	FWS	WS	WS	FWS	FWS	FWS
13	HARYANA, CHD & DELHI	FWS	FWS	FWS	FWS	SCT	SCT	SCT
14	PUNJAB	SCT	SCT	FWS	FWS	SCT	SCT	SCT
15	HIMACHAL PRADESH	FWS	FWS	WS	WS	FWS	FWS	FWS
16	JAMMU AND KASHMIR AND LADAKH	SCT	SCT	SCT	WS	FWS	SCT	SCT
17	WEST RAJASTHAN	ISOL	ISOL	ISOL	ISOL	ISOL	ISOL	ISOL
18	EAST RAJASTHAN	SCT	SCT	FWS	FWS	SCT	SCT	SCT
19	WEST MADHYA PRADESH	SCT	FWS	FWS	SCT	SCT	SCT	SCT
20	EAST MADHYA PRADESH	FWS	FWS	FWS	SCT	SCT	SCT	SCT
21	GUJRAT REGION	SCT	SCT	SCT	SCT	SCT	SCT	SCT
22	SAURASHTRA & KUTCH	SCT	SCT	SCT	SCT	SCT	SCT	SCT
23	KONKAN & GOA	FWS	FWS	FWS	WS	WS	WS	WS
24	MADHYA MAHARASHTRA	ISOL	ISOL	ISOL	ISOL	SCT	SCT	SCT
25	MARATHWADA	ISOL	ISOL	ISOL	SCT	SCT	SCT	SCT
26	VIDARBHA	SCT	SCT	SCT	SCT	SCT	FWS	FWS
27	CHATTISGARH	FWS	SCT	SCT	SCT	SCT	SCT	SCT
28	COASTAL ANDHRA PRADESH	ISOL	ISOL	SCT	SCT	SCT	SCT	SCT
29	TELANGANA	ISOL	ISOL	ISOL	ISOL	SCT	SCT	SCT
30	RAYALASEEMA	ISOL	ISOL	SCT	FWS	FWS	FWS	FWS
31	TAMILNADU & PUDUCHERRY	SCT	SCT	SCT	SCT	SCT	SCT	SCT
32	COSTAL KARNATAKA	WS	WS	WS	WS	WS	WS	WS
33	NORTH INTERIOR KARNATAKA	ISOL	SCT	SCT	SCT	SCT	SCT	SCT
34	SOUTH INTERIOR KARNATAKA	SCT	FWS	FWS	FWS	FWS	FWS	FWS
35	KERALA	WS	WS	WS	WS	WS	WS	WS
36	LAKSHDWEEP	WS	WS	WS	WS	WS	WS	WS

Legend	Category	%Stations
WS	Widespread/Most Places	76-100
FWS	Fairly Widespread/Many Places	51-75
SCT	Scattered/ A Few Places	26-50
ISOL	Isolated Places	1-25
DRY	No Rain	0

*Red color warning does not mean "Red Alert" Red color warning means "Take Action"
Forecast and warning for any day is valid from 0830 hours IST of day till 0830 hours IST of next day
For more details kindly visit <https://mausam.imd.gov.in> or contact 011-2434-4599

(Service to the nation since 1875)

Fig. 1: Maximum Temperatures Dated 2025-08-02

Fig. 2: Departure of Maximum Temp. Dated 2025-08-02

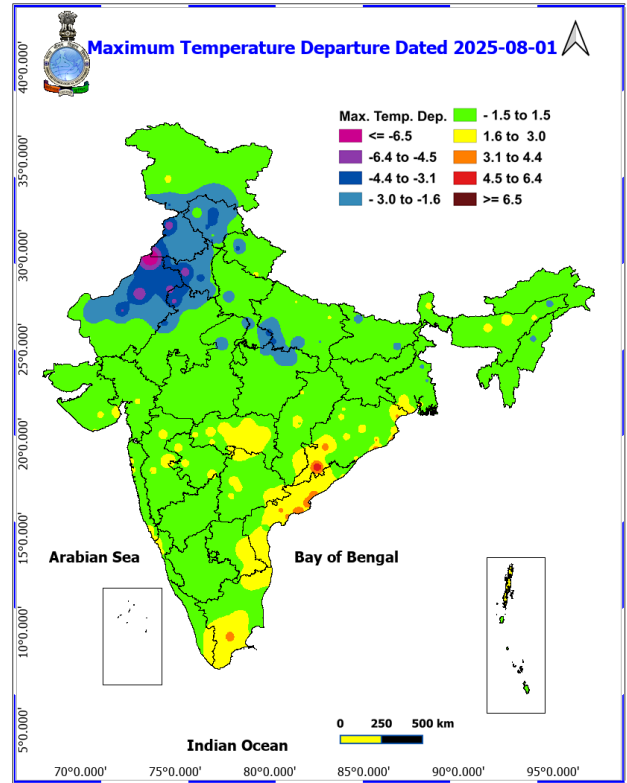
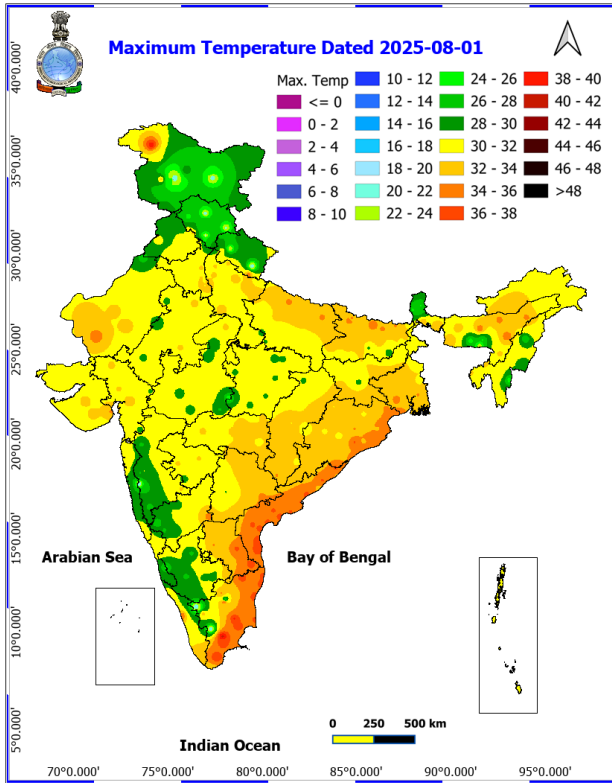
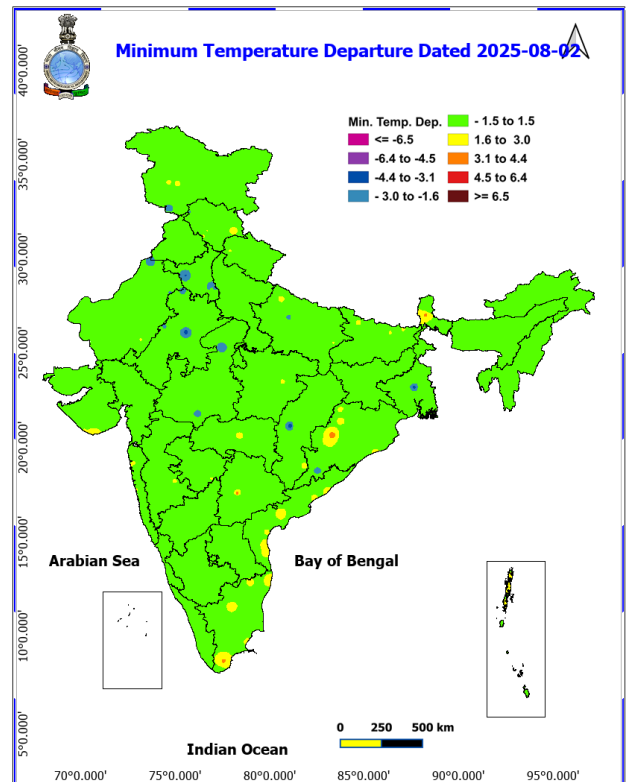
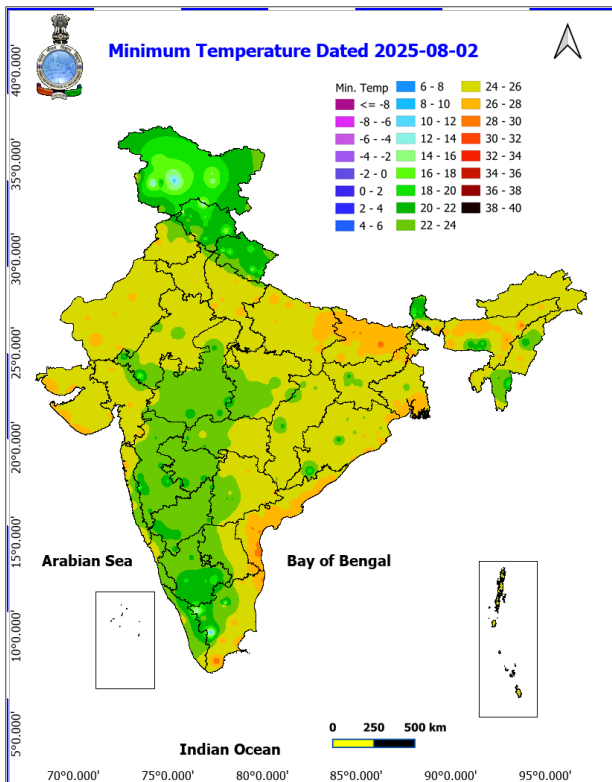


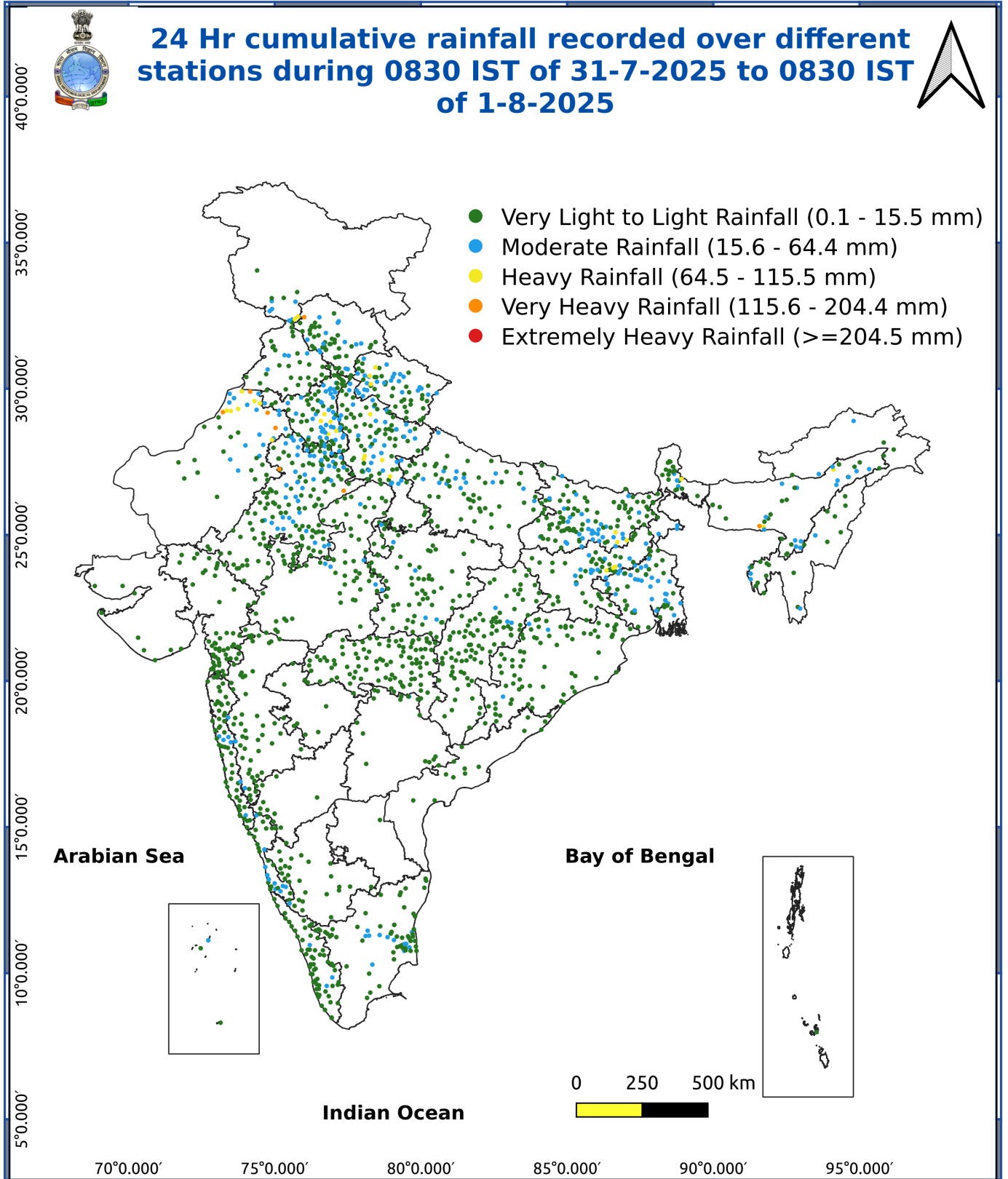
Fig. 3: Minimum Temperatures Dated 2025-08-02

Fig. 4: Departure of Minimum Temp. Dated 2025-08-02



***Red color warning does not mean "Red Alert" Red color warning means "Take Action"**
Forecast and warning for any day is valid from 0830 hours IST of day till 0830 hours IST of next day
For more details kindly visit <https://mausam.imd.gov.in> or contact 011-2434-4599

(Service to the nation since 1875)



Impact & Action Suggested due to

- **Extremely heavy rainfall** very likely at isolated places over Meghalaya, Sub-Himalayan West Bengal & Sikkim on 02nd & 03rd; Arunachal Pradesh and Bihar on 03rd August.
- **Very heavy rainfall** over East Rajasthan, West Uttar Pradesh on 04th; East Uttar Pradesh and Uttarakhand on 03rd & 04th; Tamil Nadu on 04th & 05th and Kerala & Mahe on 06th & 07th August.

Impact Expected

- Localized Flooding of roads, water logging in low lying areas and closure of underpasses mainly in urban areas of the above region.
- Occasional reduction in visibility due to heavy rainfall.
- Disruption of traffic in major cities due to water logging in roads leading to increased travel time.
- Minor damage to kutcha roads.
- Possibilities of damage to vulnerable structure.
- Localized Landslides/Mudslides/landslips/mudslips/landsinks/mudsinks.
- Damage to horticulture and standing crops in some areas due to inundation.
- It may lead to riverine flooding in some river catchments (for riverine flooding please visit Web page of CWC)

Action Suggested

- Check for traffic congestion on your route before leaving for your destination.
- Follow any traffic advisories that are issued in this regard.
- Avoid going to areas that face the water logging problems often.
- Avoid staying in vulnerable structure.

Agromet advisories for various parts of the country

Agromet advisories for likely impact of Heavy / Heavy to Very Heavy / Extremely Heavy Rainfall

- In **Assam**, to avoid waterlogging ensure proper drainage in fields of jute and *Sali* rice in **Lower Brahmaputra Valley Zone**; *Sali* rice and sugarcane in **North Bank Plain Zone**; *Sali* rice fields and arecanut plantations in **Upper Brahmaputra Valley Zone**; *Sali* rice fields in **Barak Valley Zone** and *Sali* rice nurseries, fields of maize, jute, sugarcane, vegetables and transplanted *Sali* rice in **Central Brahmaputra Valley Zone**.
- In **Meghalaya**, avoid sowing of rice in nurseries especially in valley lands. Maintain proper drainage channels around the nursery beds. Make provision for draining out excess water from maize and vegetable fields and repair bunds in lowland paddy fields.
- In **Arunachal Pradesh**, postpone sowing of finger millet and fresh transplanting of rice (in low land) till cessation of heavy rains. Provide drainage in already sown fields of finger millet, maize and WRC rice.
- In **Mizoram**, harvest matured cobs of maize. Create strong bunds around rice fields to retain rainwater and reduce runoff.
- In **Bihar**, provide adequate drainage in the fields of paddy, pigeon pea, *kharif* maize, okra and plantations in **South Bihar Alluvial Zone**.
- In **West Bengal**, make proper arrangements for drainage in fields of rice, ginger, vegetables and fruit orchards in **Hill Zone** and vegetable beds, standing vegetable crops and betel gardens in **Coastal Saline Zone**.
- In **Uttarakhand**, maintain proper drainage channels in fields of rice in **Bhabar and Tarai Zone**, black gram in **Hill Zone** and rice, barnyard millet, finger millet and cucumber in **Sub Humid SubTropic Zone**.
- In **Himachal Pradesh**, provide drainage channels in low-lying areas in rice, maize, pulses and vegetables to prevent water stagnation in **Sub-Montane & Low Hills Sub-Tropical Zone**. Strengthen plant supports for creepers and tall vegetable crops (e.g., tomato, capsicum). In **High Hills Sub Temperate Wet Zone**, provide proper drainage channels in vegetables, maize, finger millets and kidney beans.

Livestock / Fishery

*Red color warning does not mean "Red Alert" Red color warning means "Take Action"
Forecast and warning for any day is valid from 0830 hours IST of day till 0830 hours IST of next day
For more details kindly visit <https://mausam.imd.gov.in> or contact 011-2434-4599

(Service to the nation since 1875)

- Keep the animals inside the shed during heavy rainfall and provide them balanced feed.
- Store feed and fodder in a safe place to prevent spoilage.
- Construct an outlet with proper netting around the ponds to drain out excess water, thereby preventing fish from escaping in case of overflow.
- **Agromet advisories for likely impact of Thunderstorm / Gusty Winds / Squally Winds**

(Based on the IBF and advisories issued by different AMFUs)

- Provide mechanical support to horticultural crops and staking or support to vegetables and young fruit plants / fruit-bearing plants to avoid lodging due to strong winds.

Legends & abbreviations:

Region wise classification of meteorological Sub-Divisions:

Northwest India: Western Himalayan Region (Jammu-Kashmir-Ladakh-Gilgit-Baltistan-Muzaffarabad, Himachal Pradesh and Uttarakhand); Punjab, Haryana-Chandigarh-Delhi; West Uttar Pradesh, East Uttar Pradesh, West Rajasthan and East Rajasthan.

Central India: West Madhya Pradesh, East Madhya Pradesh, Vidarbha and Chhattisgarh.

East India: Bihar, Jharkhand, Sub-Himalayan West Bengal & Sikkim; Gangetic West Bengal, Odisha and Andaman & Nicobar Islands.

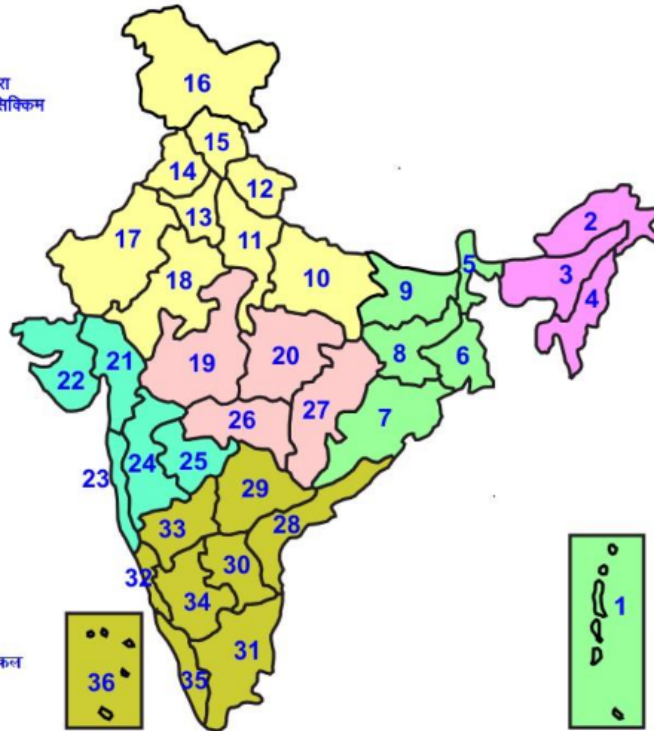
Northeast India: Arunachal Pradesh, Assam & Meghalaya and Nagaland, Manipur, Mizoram & Tripura.

West India: Gujarat Region, Saurashtra & Kutch, Konkan & Goa, Madhya Maharashtra and Marathawada.

South India: Coastal Andhra Pradesh & Yanam, Telangana, Rayalaseema, Coastal Karnataka, North Interior Karnataka, South Interior Karnataka, Kerala & Mahe, Tamil Nadu, Puducherry & Karaikal and Lakshadweep.

LEGENDS

- 1 अंडमान और निकोबार द्वीप समुह
- 2 अरुणाचल प्रदेश
- 3 असम और मेघालय
- 4 नागालैंड मनीपुर मीजोरम और त्रिपुरा
- 5 उप हिमालय पश्चिम बंगाल एवं सिक्किम
- 6 पश्चिम बांग्लेश
- 7 ओडिसा
- 8 झारखंड
- 9 बिहार
- 10 पूर्वी उत्तर प्रदेश
- 11 पश्चिम उत्तर प्रदेश
- 12 उत्तराखंड
- 13 हरियाणा चंडिगढ़ एवं दिल्ली
- 14 पंजाब
- 15 हिमाचल प्रदेश
- 16 जम्मू एवं कश्मीर एवं लद्दाख
- 17 पश्चिम राजस्थान
- 18 पूर्वी राजस्थान
- 19 पश्चिम मध्य प्रदेश
- 20 पूर्वी मध्य प्रदेश
- 21 गुजरात क्षेत्र
- 22 सौराष्ट्र एवं कच्छ
- 23 कोंकण एवं गोवा
- 24 मध्य महाराष्ट्र
- 25 मराठावाडा
- 26 विदर्भ
- 27 छत्तीसगढ़
- 28 तटीय आंध्र प्रदेश एवं यनम
- 29 तेलंगाना
- 30 रायलसीमा
- 31 तमिलनाडु, पुदुचेरी एवं कराईकल
- 32 तटिय कर्नाटक
- 33 आंतरिक उत्तरी कर्नाटक
- 34 आंतरिक दक्षिणी कर्नाटक
- 35 केरल एवं माहे
- 36 लक्षद्वीप



1. Andaman & Nicobar Islands
2. Arunachal Pradesh
3. Assam & Meghalaya
4. Nagaland, Manipur, Mizoram & Tripura
5. Sub-Himalayan West Bengal & Sikkim
6. Gangetic West Bengal
7. Orissa
8. Jharkhand
9. Bihar
10. East Uttar Pradesh
11. West Uttar Pradesh
12. Uttarakhand
13. Haryana, Chd & Delhi
14. Punjab
15. Himachal Pradesh
16. Jammu & Kashmir and Ladakh
17. West Rajasthan
18. East Rajasthan
19. West Madhya Pradesh
20. East Madhya Pradesh
21. Gujarat
22. Saurashtra
23. Konkan & Goa
24. Madhya Maharashtra
25. Marathawada
26. Vidharbha
27. Chhattisgarh
28. Coastal Andhra Pradesh & Yanam
29. Telangana
30. Rayalaseema
31. Tamilnadu, Puducherry & Karaikal
32. Coastal Karnataka
33. North Interior Karnataka
34. South Interior Karnataka
35. Kerala & Mahe
36. Lakshadweep

SPATIAL DISTRIBUTION (% of Stations reporting)

% Stations	Category	% Stations	Category
76-100	Widespread (WS/ Most Places)	26-50	Scattered (SCT/ A Few Places)
51-75	Fairly Widespread (FWS/ Many Places)	1-25	Isolated (ISOL)

Subdivision Colour

- NO WARNING
- WATCH (BE UPDATED)
- ALERT (BE PREPARED TO TAKE ACTION)
- WARNING (TAKE ACTION)

Probabilistic Forecast

Terms	Probability of Occurrence (%)
Unlikely	< 25
Likely	25 - 50
Very Likely	50 - 75
Most Likely	> 75

- | | | | |
|--------------------------|-----------------|----------------------|--------------------|
| Heavy Rain | Very Heavy Rain | Extremely Heavy Rain | Heavy Snow |
| Thunderstorm & Lightning | Hailstorm | Dust Storm | Dust Raising Winds |
| Strong surface winds | Heat Wave | Hot Day | Warm Night |
| Cold Wave | Cold Day | Ground Frost | Fog |
| Hot & Humid | | | |

*Red color warning does not mean "Red Alert" Red color warning means "Take Action"

Forecast and warning for any day is valid from 0830 hours IST of day till 0830 hours IST of next day

For more details kindly visit <https://mausam.imd.gov.in> or contact 011-2434-4599

(Service to the nation since 1875)

LEGENDS

WARNING

WARNING (TAKE ACTION)
ALERT (BE PREPARED)
WATCH (BE UPDATED)
NO WARNING (NO ACTION)

Probabilistic Forecast

Terms	Probability of Occurrence (%)
Unlikely	< 25
Likely	25 - 50
Very Likely	50 - 75
Most Likely	> 75



Heavy: 64.5 to 115.5 mm/cm *
Very Heavy: 115.6 to 204.4 mm/cm*
Extremely Heavy: > 204.4 mm/cm *



When maximum temperature of a station reaches $\geq 40^{\circ}\text{C}$ for plains and $\geq 30^{\circ}\text{C}$ for hilly regions
(a) Based on Departure from normal

Heat Wave: Maximum Temperature Departure from normal 4.5°C to 6.4°C .
Severe Heat Wave: Maximum Temperature Departure from normal $\geq 6.5^{\circ}\text{C}$

(b). Based on Actual maximum temperature

Heat Wave: When actual maximum temperature $\geq 45^{\circ}\text{C}$.
Severe Heat Wave: When actual maximum temperature $\geq 47^{\circ}\text{C}$

(c). Criteria for heat wave for coastal stations

When maximum temperature departure is $> 4.5^{\circ}\text{C}$ from normal. Heat Wave may be described provided maximum temperature $\geq 37^{\circ}\text{C}$



When maximum temperature remains 40°C

Warm Night: When minimum temperature departure 4.5°C to 6.4°C .
Severe Warm Night: When minimum temperature departure $> 6.4^{\circ}\text{C}$.



When minimum temperature of a station $\leq 10^{\circ}\text{C}$ for plains and $\leq 0^{\circ}\text{C}$ for hilly regions.

(a). Based on departure

Cold Wave: Minimum Temperature Departure from normal -4.5°C to -6.4°C .
Severe Cold Wave: Minimum Temperature Departure from normal $\leq -6.5^{\circ}\text{C}$

(b) Based on actual Minimum Temperature (for Plains only)

Cold Wave : When Minimum Temperature is $\leq 4.0^{\circ}\text{C}$
Severe Cold Wave: When Minimum Temperature is $\leq 2.0^{\circ}\text{C}$

(c) For Coastal Stations

When Minimum Temperature departure is $\leq -4.5^{\circ}\text{C}$ & actual Minimum Temperature is $\leq 15^{\circ}\text{C}$



When minimum temperature of a station $\leq 10^{\circ}\text{C}$ for plains and $\leq 0^{\circ}\text{C}$ for hilly regions
Based on departure

Cold Day: Maximum Temperature Departure from normal -4.5°C to -6.4°C .
Severe Cold Day: Maximum Temperature Departure from normal $\leq -6.5^{\circ}\text{C}$



Phenomenon of small droplets suspended in air and the horizontal visibility $< 1\text{km}$

Moderate Fog: When the visibility between 500-200 metres
Dense Fog: when the visibility between 50- 200 metres
Very Dense Fog: when the visibility < 50 metres



Sudden electrical discharges manifested by a flash of light (Lightning) and a sharp rumbling sound (thunder)



An ensemble of particles of dust or sand energetically lifted to great heights by a strong and turbulent wind.



Ice deposits on ground

Air temperature $\leq 4^{\circ}\text{C}$ (over Plains)



A strong wind that rises suddenly, lasts for atleast 1 minute.

Moderate: Wind speed 52-61 kmph
Severe: Wind speed 62-87 kmph
Very Severe: Wind speed > 87 kmph



Effect of various waves in the sea over specific area

Rough to very rough: Wind speed 41-62 kmph (22-33 knots) & Wave height 2.5-6 metre
High to very high: Wind speed 63-117 kmph (34-63 knots) & Wave height 6-14 metre
Phenomenal: Wind speed > 117 kmph (> 63 knots) & Wave height > 14 metre



Cyclonic Storm: Wind speed 62-87 kmph (34-47 knots)
Severe Cyclonic Storm: Wind speed 88-117 kmph (48-63 knots)
Very Severe Cyclonic Storm: Wind speed 118-165 kmph (64 - 89 knots)
Extremely Severe Cyclonic Storm: Wind speed 166-220 kmph (90 -119 knots)
Super Cyclone Storm: Wind speed > 220 kmph (> 119 knots)

*Red color warning does not mean "Red Alert" Red color warning means "Take Action"

Forecast and warning for any day is valid from 0830 hours IST of day till 0830 hours IST of next day

For more details kindly visit <https://mausam.imd.gov.in> or contact 011-2434-4599

(Service to the nation since 1875)