

2025-08-26

Time of Issue: 09:15:00 hours IST
(Morning)

ALL INDIA WEATHER SUMMARY AND FORECAST BULLETIN

Significant Weather Features

Northwest India:

- Isolated **heavy rainfall** likely over Uttarakhand, Himachal Pradesh, East Rajasthan during next 7 days; Jammu & Kashmir on 26th August; Haryana, Punjab on 26th, 27th, 29th & 30th August; Uttar Pradesh during 29th August-01st September with **isolated very heavy rainfall over Jammu & Kashmir, Himachal Pradesh, Punjab, Haryana, Chandigarh, West Rajasthan, Himachal Pradesh on 26th; East Rajasthan on 26th & 27th and Uttarakhand on 29th & 30th August.**
- Light/moderate rainfall at most/many places accompanied with thunderstorm & lightning likely over the western Himalayan region during next 7 days and adjoining plains during next 2 days and scattered rainfall during subsequent 5 days.

East & Central India:

- Isolated **heavy rainfall** likely over Chhattisgarh, Odisha during next 4 days; Sub-Himalayan West Bengal & Sikkim on 27th, 29th August; Bihar, Madhya Pradesh during 29th August-01st Septmeber; Jharkhand during 30th August-01st Septmeber; Vidarbha during 28th-30th August with **isolated very heavy rainfall over Odisha on 26th & 27th August.**
- Light to moderate rainfall at most/many places accompanied with thunderstorm & lightning likely over the region during next 7 days.

West India:

- **Spell of heavy rainfall is very likely to continue over Gujarat state during next 7 days with very heavy rainfall over the region on 26th & 27th August.**
- **Heavy rainfall** is very likely over Konkan & Goa, Madhya Maharashtra during next 7 days.
- Light to moderate rainfall at most/many places very likely over the region during next 7 days.

Northeast India:

- Isolated **heavy rainfall** likely to continue over Assam & Meghalaya, Arunachal Pradesh during next 6-7 days; Nagaland, Manipur, Mizoram & Tripura during 27th-30th August.
- Light/moderate rainfall at many places accompanied with thunderstorm & lightning likely during next 3 days.

South Peninsular India:

- Isolated **heavy rainfall** likely over Kerala & Mahe during 26th-29th; Coastal Karnataka during 26th-30th; Interior Karnataka, Tamil Nadu, Telangana on 27th & 28th; Coastal Andhra Pradesh & Yanam on 26th & 27th August with **very heavy rainfall over Coastal Andhra Pradesh on 26th August.**
- Light to moderate rainfall at some places accompanied with thunderstorm & lightning likely over the region during next 3 days and many places during subsequent 4 days.

***Red color warning does not mean "Red Alert" Red color warning means "Take Action"**

Forecast and warning for any day is valid from 0830 hours IST of day till 0830 hours IST of next day

For more details kindly visit <https://mausam.imd.gov.in> or contact 011-2434-4599

(Service to the nation since 1875)

Main Weather Observations:

❖ **Significant rainfall recorded(in cm)** (from 0830 hours IST of yesterday to 0530 hours IST of today): **Punjab:** Amritsar (rajasansi) AP (dist Amritsar) 15; **Nagaland, Manipur, Mizoram & Tripura:** Dimapur (dist Dimapur), Kailashahar AP (dist Unakoti) 7 Each; **Chhattisgarh:** Pendra Road (dist Gaurella-pendra-marwahi) 7, Jagdalpur (dist Bastar) 4, Ambikapur (dist Surguja) 2; **East Uttar Pradesh:** Lucknow (amausi) AP (dist Lucknow) 7, Kanpur Airforce (dist Kanpur Nagar) 4, Allahabad (dist Prayagraj) 3; **Jammu & Kashmir and Ladakh:** Jammu (dist Jammu) 7, Bhandarwah (dist Doda), Katra (dist Reasi) 6 Each, Batote (dist Doda) 4, Leh (dist Leh) 3, Banihal (dist Doda), Kukernag (dist Anantnag) 2 Each; **Himachal Pradesh:** Sundernagar (dist Mandi) 5; **Haryana-Chandigarh & Delhi:** Ambala (dist Ambala) 5; **Coastal Andhra Pradesh & Yanam:** Visakhapatnam, Vishakhapatnam (dist Visakhapatnam) 4 Each; **Uttarakhand:** Dehra Dun-mokampur (dist Dehradun) 2; **Odisha:** Bhubaneshwar (dist Khordha), Paradip Port (dist Jagatsinghapur) 2 Each; **Konkan & Goa:** Mumbai (colaba) (dist) 2.

❖ **Heavy Rainfall observed** (from 0830 hours IST of yesterday to 0530 hours IST of today): **Heavy to very heavy rain** at a few places over Punjab; **Heavy rain** at a few places over Nagaland, Manipur, Mizoram & Tripura, at isolated places over East Uttar Pradesh, Jammu & Kashmir and Ladakh and Chhattisgarh.

❖ **Minimum Temperature Departures (as on 25-08-2025):** **markedly above normal(> 5.1°C)** at isolated places over Assam & Meghalaya, East Uttar Pradesh, West Uttar Pradesh, Himachal Pradesh and West Madhya Pradesh. **appreciably above normal(3.1°C to 5.0°C)** at many places over East Madhya Pradesh; at isolated places over Sub Himalayan West Bengal & Sikkim, Odisha, Bihar, West Rajasthan and Saurashtra & Kutch. **above normal(1.6°C to 3.0°C)** at few places over Uttarakhand and Coastal Andhra Pradesh & Yanam; at isolated places over Nagaland, Manipur, Mizoram & Tripura, Gangetic West Bengal, Gujarat Region, Konkan & Goa, Madhya Maharashtra, Telangana and Tamil Nadu, Puducherry & Karaikal. **near normal(-1.5°C to 1.5°C)** at many places over Haryana-Chandigarh-Delhi, East Rajasthan, Chhattisgarh and South Interior Karnataka; at most places over Andaman & Nicobar Islands, Arunachal Pradesh, Jharkhand, Marathwada, Vidarbha, Rayalaseema, Coastal Karnataka, North Interior Karnataka, Kerala & Mahe and Lakshadweep; at few places over Jammu-Kashmir-Ladakh-Gilgit-Baltistan-Muzaffarabad; at isolated places over Punjab. **The lowest minimum temperature** of 18.0°C is reported at MYSORE (KARNATAKA) over the Plains of India.

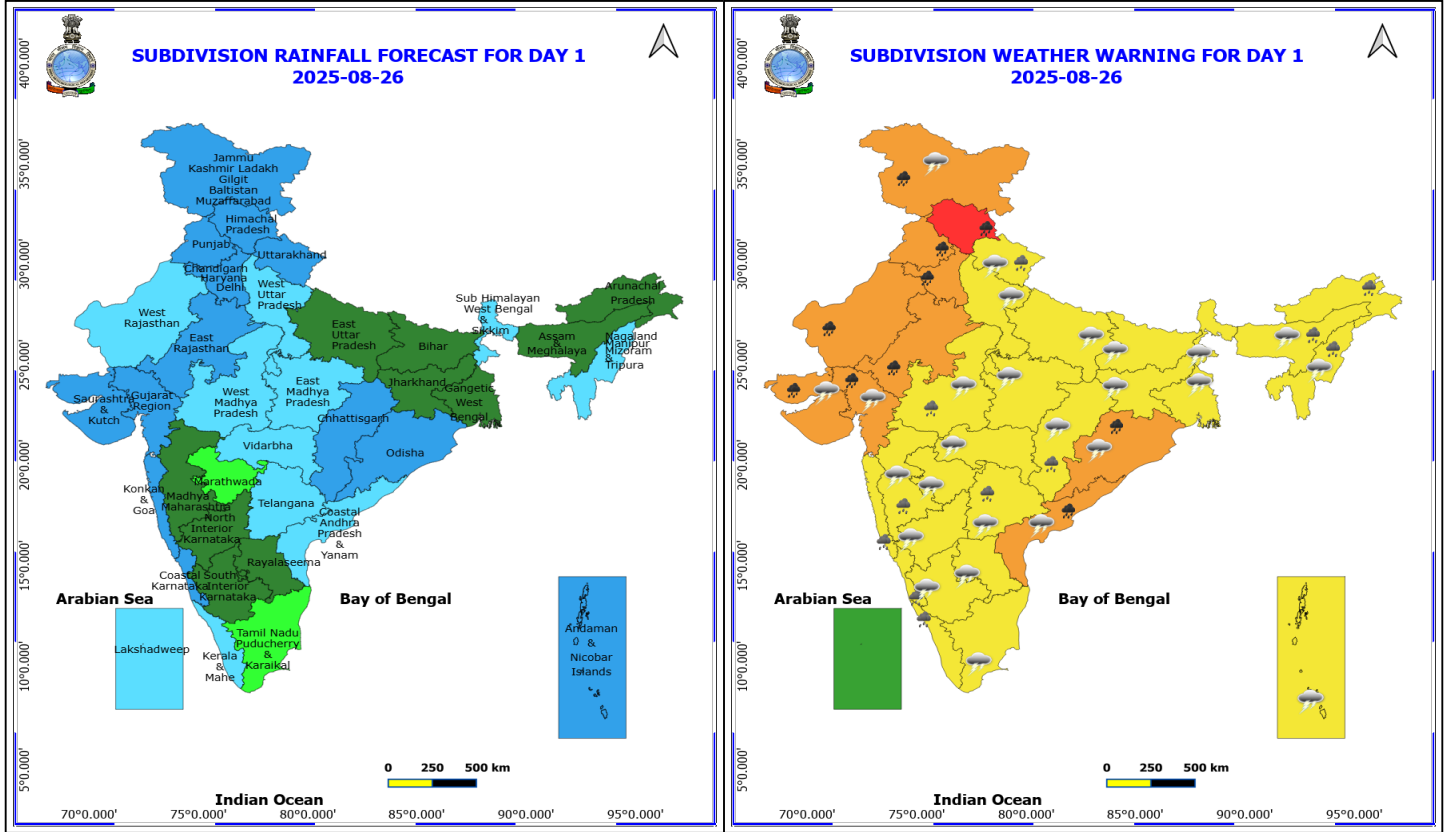
❖ **Maximum Temperature Departures (as on 25-08-2025):** **appreciably above normal(3.1°C to 5.0°C)** at few places over Kerala & Mahe; at isolated places over Assam & Meghalaya, Odisha, East Madhya Pradesh, Coastal Andhra Pradesh & Yanam and Tamil Nadu, Puducherry & Karaikal. **above normal(1.6°C to 3.0°C)** at few places over Arunachal Pradesh, Nagaland, Manipur, Mizoram & Tripura and Lakshadweep; at isolated places over Andaman & Nicobar Islands, Sub Himalayan West Bengal & Sikkim, Uttarakhand, Konkan & Goa, Chhattisgarh and Telangana. **near normal(-1.5°C to 1.5°C)** at many places over Gangetic West Bengal, Jharkhand, East Rajasthan and Rayalaseema; at most places over Marathwada, Vidarbha, Coastal Karnataka, North Interior Karnataka and South Interior Karnataka; at few places over Bihar, West Uttar Pradesh, West Rajasthan, West Madhya Pradesh and Madhya Maharashtra; at isolated places over East Uttar Pradesh, Haryana-Chandigarh-Delhi, Himachal Pradesh, Gujarat Region and Saurashtra & Kutch. **The highest maximum temperature** of 39.5°C is reported at PALAYAMKOTTAI (TAMIL NADU).

Meteorological Analysis (Based on 0530 hours IST)

- Under the influence of an **upper air cyclonic circulation** over northwest Bay of Bengal off Odisha-West Bengal coasts, a **low-pressure area** has formed over northwest Bay of Bengal off Odisha coast at 0530 hrs IST of today. The associated cyclonic circulation extends upto 7.6 km above mean sea level tilting southwestwards with height. It is likely to move west-northwestwards and become more marked during next 2 days.
- The **upper air cyclonic circulation** over south Haryana and adjoining northeast Rajasthan extended upto 5.8 km above mean sea level tilted southwards with height persists.
- The **monsoon trough** at mean sea level now passes through Ganganagar, Gwalior, Satna, Jharsuguda to the centre of low pressure area over northwest Bay of Bengal off Odisha coast and thence to southeastward to east central Bay of Bengal.
- The above monsoon trough also extends up to 1.5 km above mean sea level and passes through across above two embedded cyclonic circulations.
- An east-west trough runs from east Vidarbha to east Central Bay of Bengal across south Chhattisgarh, cyclonic circulation associated with **low-pressure area** over northwest Bay of Bengal off Odisha coast between 5.8 and 7.6km above mean sea level.
- The **Western Disturbance** now seen as a trough in middle & upper tropospheric levels with its axis at 5.8 km above mean sea level roughly along Long. 70°E to north of Lat. 28°N.
- The trough from upper air cyclonic circulation over south Haryana and adjoining northeast Rajasthan to the **cyclonic circulation** over northwest Bay of Bengal off Odisha-West Bengal Coasts between 1.5 & 3.1 km above mean sea level has become less marked.

Weather Outlook for subsequent 3 days

- Scattered to Fairly widespread rainfall likely over northern, western India, western peninsular and eastern India.



26 August (Day 1)

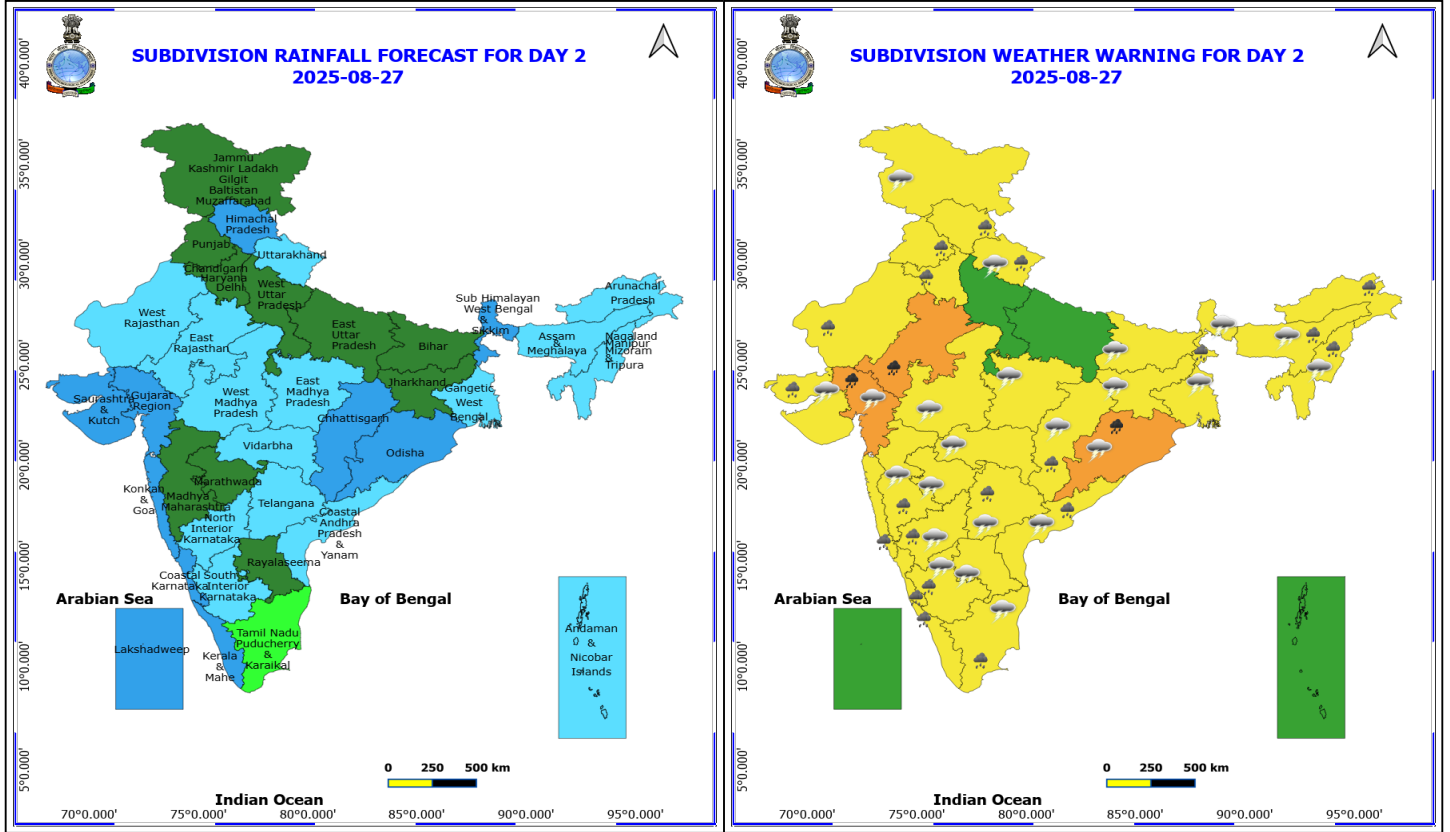
- ❖ **Heavy to Very Heavy Rainfall** very likely at isolated places over Coastal Andhra Pradesh, Gujarat State, Haryana, Chandigarh & Delhi, Himachal Pradesh, Jammu-Kashmir-Ladakh-Gilgit-Baltistan-Muzaffarabad, Odisha, Punjab and Rajasthan.
- ❖ **Heavy Rainfall** very likely at isolated places over Arunachal Pradesh, Assam & Meghalaya, Chhattisgarh, Coastal Karnataka, Kerala & Mahe, Konkan & Goa, Madhya Maharashtra, Nagaland, Manipur, Mizoram and Tripura, Telangana, Uttarakhand and West Madhya Pradesh.
- ❖ **Thunderstorm accompanied with lightning & gusty winds(30-40kmph)** very likely at isolated places over Andaman & Nicobar Islands, Bihar, Gujarat State, Interior Karnataka, Jammu-Kashmir-Ladakh-Gilgit-Baltistan-Muzaffarabad, Jharkhand, Nagaland, Manipur, Mizoram and Tripura and Telangana.
- ❖ **Thunderstorm accompanied with Lightning** very likely at isolated places over Andhra Pradesh, Assam & Meghalaya, Chhattisgarh, Madhya Pradesh, Maharashtra, Odisha, Tamil Nadu Puducherry & Karaikal, Uttar Pradesh, Uttarakhand and West Bengal & Sikkim.

Squally wind with speed reaching 45 kmph to 55 kmph gusting to 65 kmph is likely to prevail along and off Somalia, Oman coasts, most parts of westcentral Arabian sea, adjoining & some parts of southwest, eastcentral Arabian Sea, adjoining parts of northwest Arabian Sea.

Squally weather with wind speed reaching 40 - 50 kmph gusting to 60 kmph likely to prevail along and off south Gujarat, Konkan, Goa, Karnataka, Kerala coasts, Lakshadweep area, and many parts of eastcentral Arabian Sea; along and off Odisha, West Bengal coasts, over many parts of north Bay of Bengal & adjoining central Bay of Bengal, over few parts of south west Bay of Bengal off south Sri Lanka coast.

***Red color warning does not mean "Red Alert" Red color warning means "Take Action"**
Forecast and warning for any day is valid from 0830 hours IST of day till 0830 hours IST of next day
For more details kindly visit <https://mausam.imd.gov.in> or contact 011-2434-4599

(Service to the nation since 1875)



27 August (Day 2)

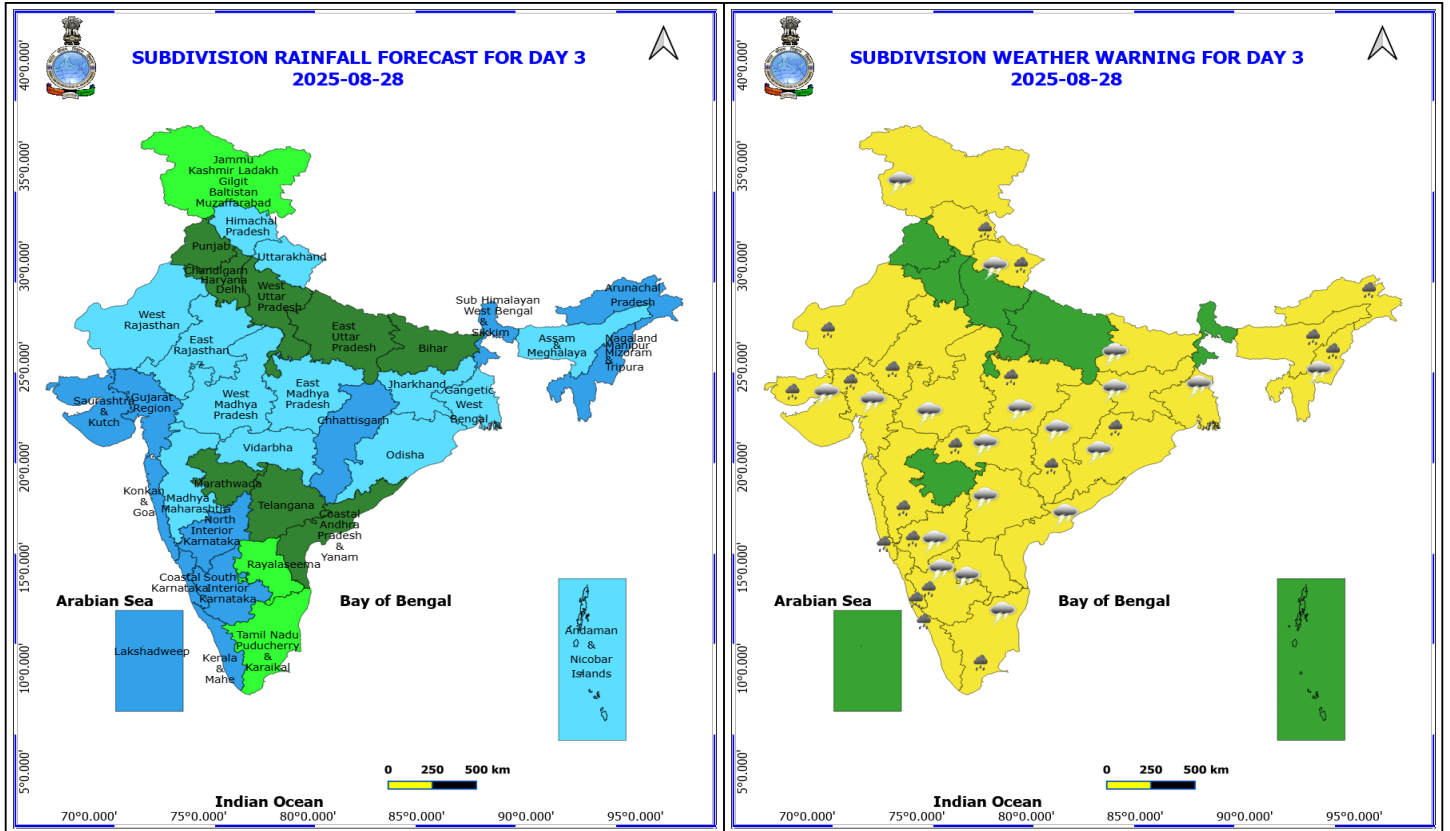
- ❖ **Heavy to Very Heavy Rainfall** very likely at isolated places over East Rajasthan, Gujarat Region and Odisha.
- ❖ **Heavy Rainfall** very likely at isolated places over Arunachal Pradesh, Assam & Meghalaya, Chhattisgarh, Coastal Andhra Pradesh, Haryana, Chandigarh & Delhi, Himachal Pradesh, Karnataka, Kerala & Mahe, Konkan & Goa, Madhya Maharashtra, Nagaland, Manipur, Mizoram and Tripura, Punjab, Saurashtra & Kutch, Sub Himalayan West Bengal & Sikkim, Tamil Nadu Puducherry & Karaikal, Telangana, Uttarakhand and West Rajasthan.
- ❖ **Thunderstorm accompanied with lightning & gusty winds(30-40kmph)** very likely at isolated places over Bihar, Gujarat State, Interior Karnataka, Jammu-Kashmir-Ladakh-Gilgit-Baltistan-Muzaffarabad, Jharkhand, Nagaland, Manipur, Mizoram and Tripura and Telangana.
- ❖ **Thunderstorm accompanied with Lightning** very likely at isolated places over Andhra Pradesh, Assam & Meghalaya, Chhattisgarh, Madhya Pradesh, Maharashtra, Odisha, Tamil Nadu Puducherry & Karaikal, Uttarakhand and West Bengal & Sikkim.

Squally wind with speed reaching 45 kmph to 55 kmph gusting to 65 kmph is likely to prevail along and off Somalia, Oman coasts, most parts of westcentral Arabian sea, adjoining & some parts of southwest, eastcentral Arabian Sea, adjoining parts of northwest Arabian Sea.

Squally weather with wind speed reaching 40 - 50 kmph gusting to 60 kmph likely to prevail along and off south Gujarat, Konkan, Goa, Karnataka, Kerala coasts, Lakshadweep, Comorin areas, and most parts of eastcentral Arabian Sea; along and off Andhra Pradesh, Odisha, West Bengal, Bangladesh coasts, over entire north Bay of Bengal & most parts of central Bay of Bengal, over many parts of southwest Bay of Bengal off south Sri Lanka coast, over Gulf of Mannar.

***Red color warning does not mean "Red Alert" Red color warning means "Take Action"**
Forecast and warning for any day is valid from 0830 hours IST of day till 0830 hours IST of next day
For more details kindly visit <https://mausam.imd.gov.in> or contact 011-2434-4599

(Service to the nation since 1875)



28 August (Day 3)

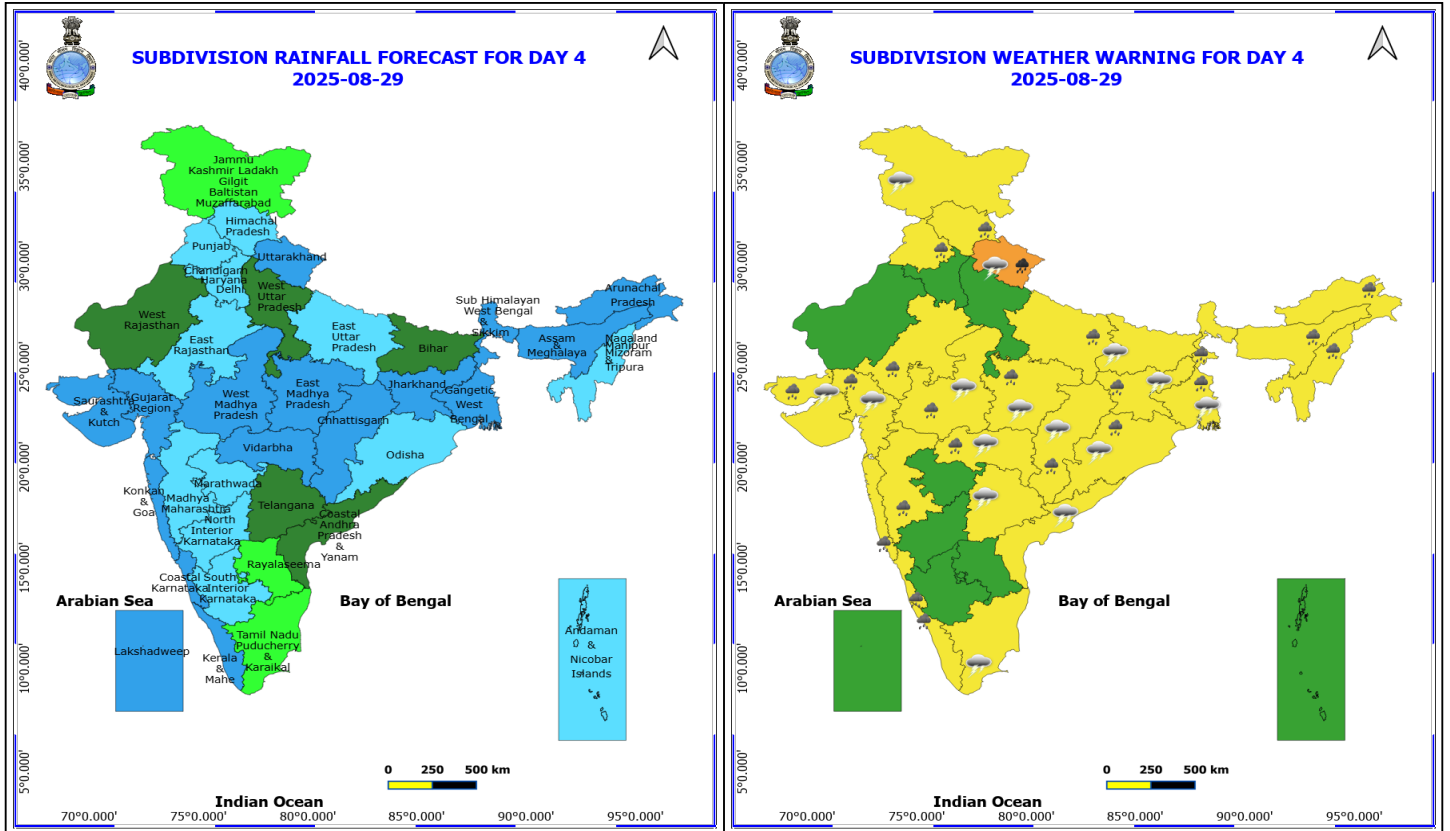
- ❖ **Heavy Rainfall** very likely at isolated places over Arunachal Pradesh, Assam & Meghalaya, Chhattisgarh, East Madhya Pradesh, Gujarat State, Himachal Pradesh, Karnataka, Kerala & Mahe, Konkan & Goa, Madhya Maharashtra, Nagaland, Manipur, Mizoram and Tripura, Odisha, Rajasthan, Tamil Nadu Puducherry & Karaikal, Uttarakhand and Vidarbha.
- ❖ **Thunderstorm accompanied with lightning & gusty winds(30-40kmph)** very likely at isolated places over Bihar, Gujarat State, Interior Karnataka, Jammu-Kashmir-Ladakh-Gilgit-Baltistan-Muzaffarabad, Jharkhand, Nagaland, Manipur, Mizoram and Tripura and Telangana.
- ❖ **Thunderstorm accompanied with Lightning** very likely at isolated places over Andhra Pradesh, Chhattisgarh, Gangetic West Bengal, Madhya Pradesh, Odisha, Tamil Nadu Puducherry & Karaikal, Uttarakhand and Vidarbha.

Squally wind with speed reaching 45 kmph to 55 kmph gusting to 65 kmph is likely to prevail along and off Somalia, Oman coasts, most parts of westcentral Arabian sea, adjoining & some parts of southwest, eastcentral Arabian Sea.

Squally weather with wind speed reaching 40 - 50 kmph gusting to 60 kmph likely to prevail along and off south Gujarat, Konkan, Goa, Karnataka, Kerala coasts, Lakshadweep, Comorin areas, and most parts of eastcentral Arabian Sea; along and off Andhra Pradesh, Odisha, West Bengal, Bangladesh coasts, over entire north Bay of Bengal & most parts of central Bay of Bengal, over most parts of southwest Bay of Bengal and adjoining southeast Bay of Bengal, off Sri Lanka coast, over Gulf of Mannar.

***Red color warning does not mean "Red Alert" Red color warning means "Take Action"**
Forecast and warning for any day is valid from 0830 hours IST of day till 0830 hours IST of next day
For more details kindly visit <https://mausam.imd.gov.in> or contact 011-2434-4599

(Service to the nation since 1875)



29 August (Day 4)

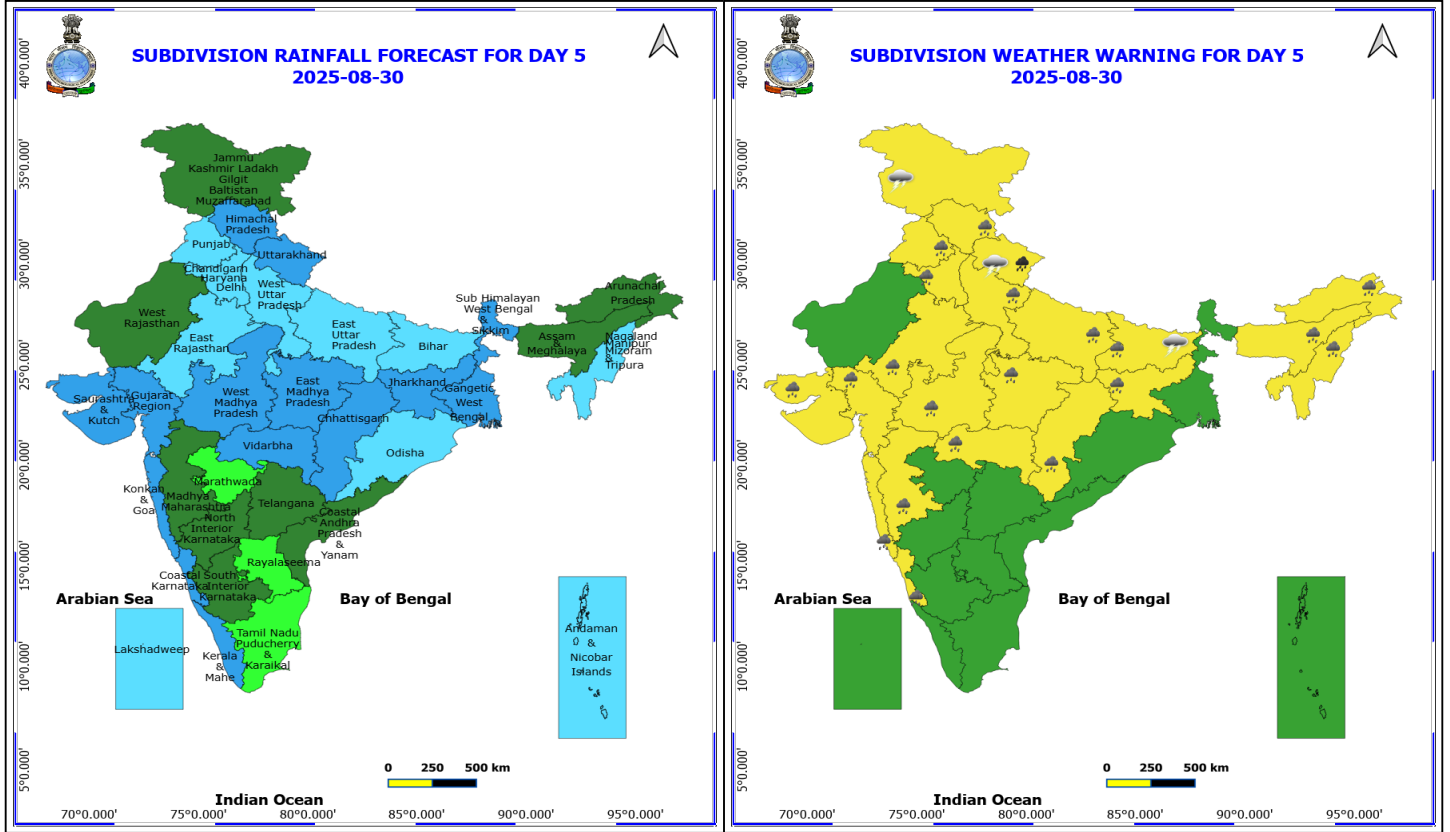
- ❖ **Heavy to Very Heavy Rainfall** likely at isolated places over Uttarakhand.
- ❖ **Heavy Rainfall** likely at isolated places over Arunachal Pradesh, Assam & Meghalaya, Chhattisgarh, Coastal Karnataka, East Rajasthan, East Uttar Pradesh, Gujarat State, Himachal Pradesh, Jharkhand, Kerala & Mahe, Konkan & Goa, Madhya Maharashtra, Madhya Pradesh, Nagaland, Manipur, Mizoram and Tripura, Odisha, Punjab, Vidarbha and West Bengal & Sikkim.
- ❖ **Thunderstorm accompanied with lightning & gusty winds(30-40kmph)** likely at isolated places over Bihar, Gujarat State, Jammu-Kashmir-Ladakh-Gilgit-Baltistan-Muzaffarabad, Jharkhand and Telangana.
- ❖ **Thunderstorm accompanied with Lightning** likely at isolated places over Chhattisgarh, Coastal Andhra Pradesh, Gangetic West Bengal, Madhya Pradesh, Odisha, Tamil Nadu Puducherry & Karaikal, Uttarakhand and Vidarbha.

Squally wind with speed reaching 45 kmph to 55 kmph gusting to 65 kmph is likely to prevail along and off Somalia, Oman coasts, most parts of westcentral Arabian sea, adjoining & some parts of southwest, eastcentral Arabian Sea.

Squally weather with wind speed reaching 40 - 50 kmph gusting to 60 kmph likely to prevail along and off Konkan, Goa, Karnataka coasts, and most parts of eastcentral Arabian Sea & adjoining parts of southeast Arabian Sea & Lakshadweep area; along and off north Andhra Pradesh, Odisha, West Bengal, Bangladesh coasts, over entire north Bay of Bengal & most parts of central Bay of Bengal, over most parts of southwest Bay of Bengal and adjoining southeast Bay of Bengal, off Sri Lanka coast.

***Red color warning does not mean "Red Alert" Red color warning means "Take Action"**
Forecast and warning for any day is valid from 0830 hours IST of day till 0830 hours IST of next day
For more details kindly visit <https://mausam.imd.gov.in> or contact 011-2434-4599

(Service to the nation since 1875)



30 August (Day 5)

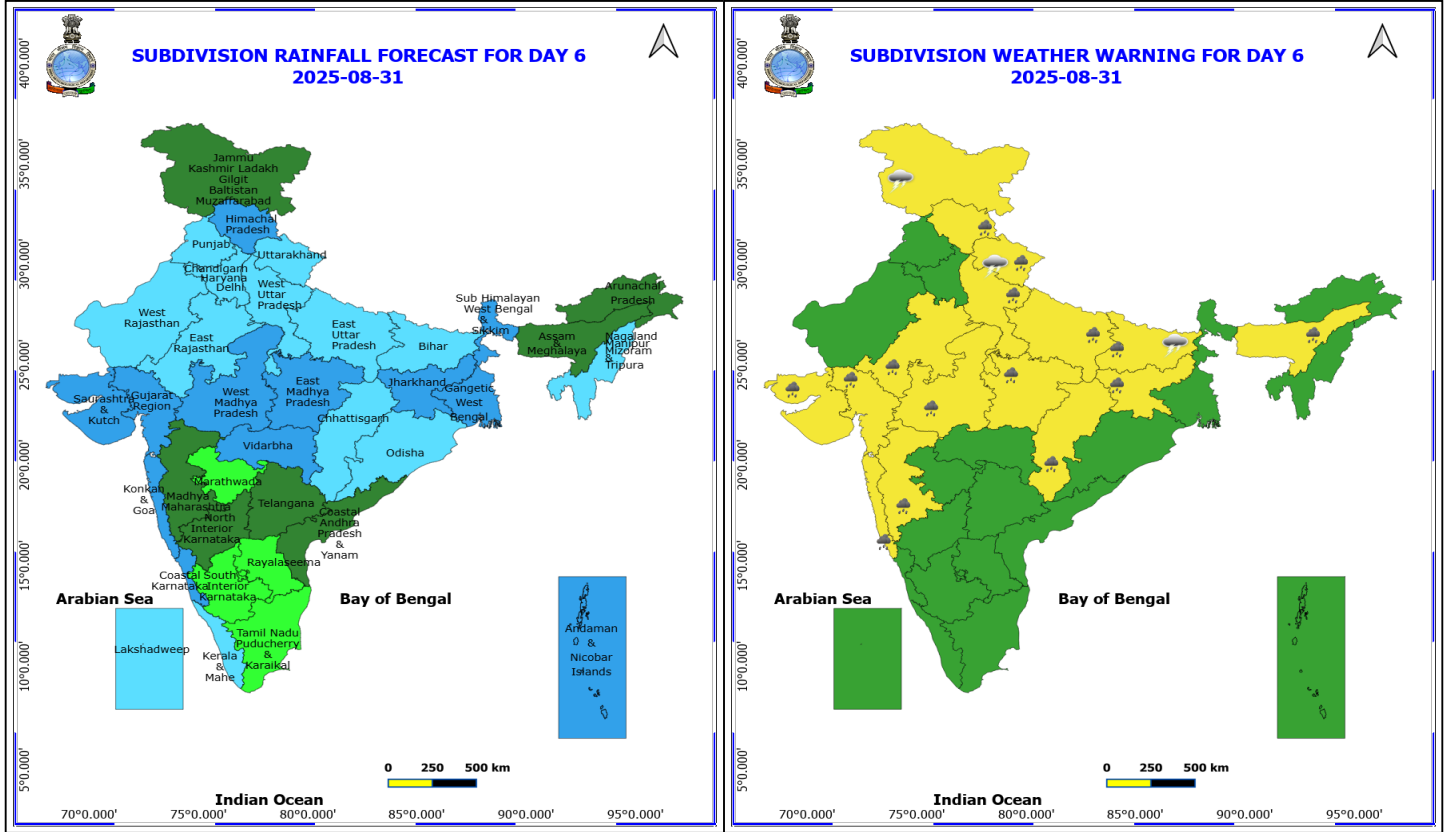
- ❖ **Heavy to Very Heavy Rainfall** likely at isolated places over Uttarakhand.
- ❖ **Heavy Rainfall** likely at isolated places over Arunachal Pradesh, Assam & Meghalaya, Bihar, Chhattisgarh, Coastal Karnataka, East Rajasthan, Gujarat State, Haryana, Chandigarh & Delhi, Himachal Pradesh, Jharkhand, Konkan & Goa, Madhya Maharashtra, Madhya Pradesh, Nagaland, Manipur, Mizoram and Tripura, Punjab, Uttar Pradesh and Vidarbha.
- ❖ **Thunderstorm accompanied with lightning & gusty winds(30-40kmph)** likely at isolated places over Bihar and Jammu-Kashmir-Ladakh-Gilgit-Baltistan-Muzaffarabad.
- ❖ **Thunderstorm accompanied with Lightning** likely at isolated places over Uttarakhand.

Squally wind with speed reaching 45 kmph to 55 kmph gusting to 65 kmph is likely to prevail along and off Somalia, Oman coasts, most parts of westcentral Arabian sea, adjoining & some parts of southwest, eastcentral Arabian Sea.

Squally weather with wind speed reaching 40 - 50 kmph gusting to 60 kmph likely to prevail along and off Konkan, Goa, Karnataka coasts, and most parts of eastcentral Arabian Sea & adjoining parts of southeast Arabian Sea & Lakshadweep area; along and off north Andhra Pradesh, Odisha, West Bengal, Bangladesh coasts, over entire north Bay of Bengal & most parts of central Bay of Bengal, over most parts of southwest Bay of Bengal and adjoining southeast Bay of Bengal, off Sri Lanka coast.

***Red color warning does not mean "Red Alert" Red color warning means "Take Action"**
Forecast and warning for any day is valid from 0830 hours IST of day till 0830 hours IST of next day
For more details kindly visit <https://mausam.imd.gov.in> or contact 011-2434-4599

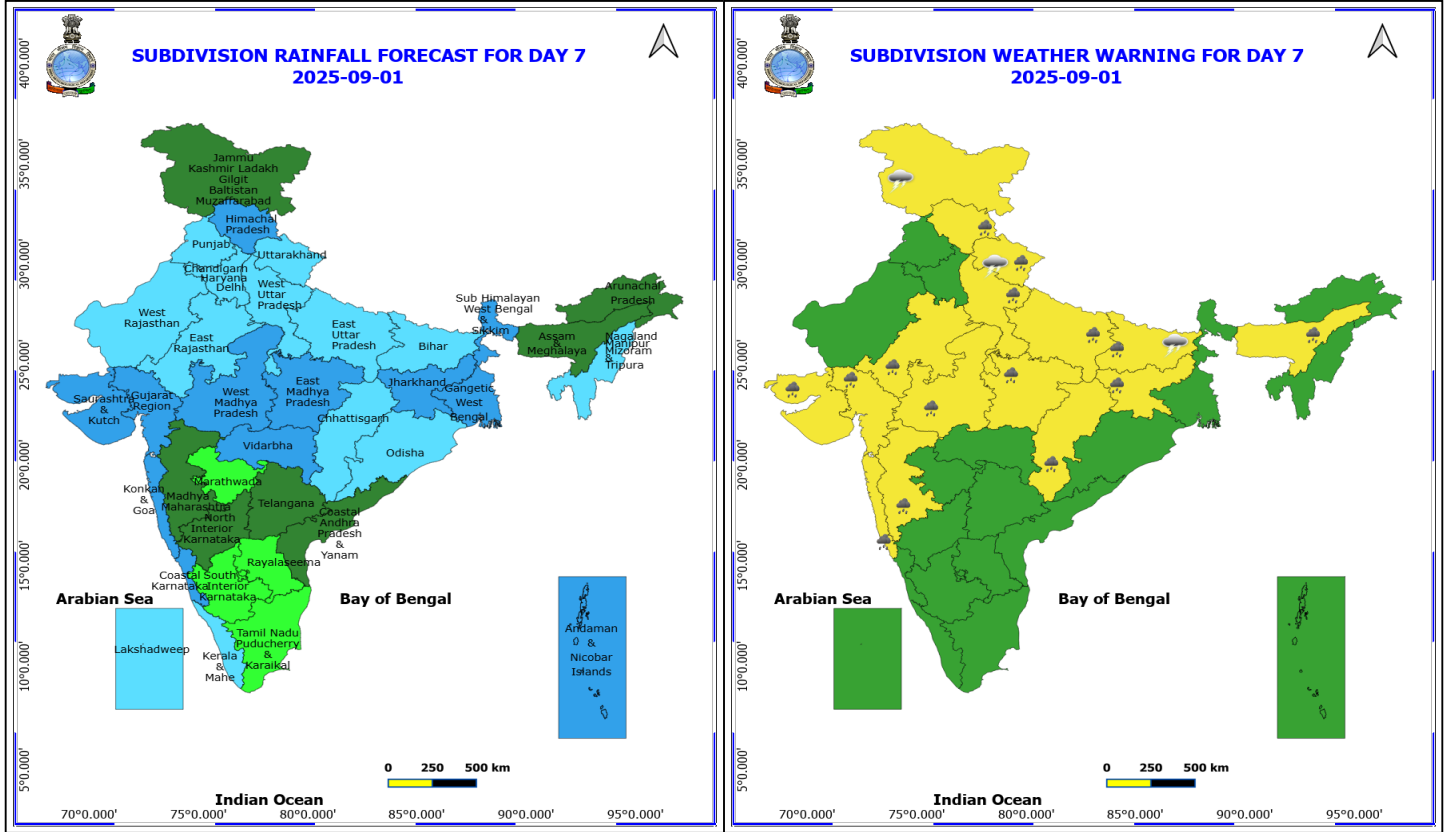
(Service to the nation since 1875)



31 August (Day 6)

- ❖ **Heavy Rainfall** likely at isolated places over Assam & Meghalaya, Bihar, Chhattisgarh, East Rajasthan, Gujarat State, Himachal Pradesh, Jharkhand, Konkan & Goa, Madhya Maharashtra, Madhya Pradesh, Uttar Pradesh and Uttarakhand.
- ❖ **Thunderstorm accompanied with lightning & gusty winds(30-40kmph)** likely at isolated places over Bihar and Jammu-Kashmir-Ladakh-Gilgit-Baltistan-Muzaffarabad.
- ❖ **Thunderstorm accompanied with Lightning** likely at isolated places over Uttarakhand.

No Fishermen Warning



1 September (Day 7)

- ❖ **Heavy Rainfall** likely at isolated places over Assam & Meghalaya, Bihar, Chhattisgarh, East Rajasthan, Gujarat State, Himachal Pradesh, Jharkhand, Konkan & Goa, Madhya Maharashtra, Madhya Pradesh, Uttar Pradesh and Uttarakhand.
 - ❖ **Thunderstorm accompanied with lightning & gusty winds(30-40kmph)** likely at isolated places over Bihar and Jammu-Kashmir-Ladakh-Gilgit-Baltistan-Muzaffarabad.
 - ❖ **Thunderstorm accompanied with Lightning** likely at isolated places over Uttarakhand.
- No Fishermen Warning**

***Red color warning does not mean "Red Alert" Red color warning means "Take Action"**
Forecast and warning for any day is valid from 0830 hours IST of day till 0830 hours IST of next day
For more details kindly visit <https://mausam.imd.gov.in> or contact 011-2434-4599
(Service to the nation since 1875)

Flash Flood Warnings

24 hours Outlook for the Flash Flood Risk (FFR) till 0530 IST of 27-08-2025 :

Moderate to High flash flood risk likely over few watersheds & neighbourhoods of following Met Sub-divisions during next 24 hours.

Himachal Pradesh - Chamba, Kangra, Kinnaur, Kullu, Lahul & Spiti and Mandi districts.

Jammu & Kashmir & Ladakh - Doda, Jammu, Kathua, Kistwar, Samba, Udhampur, Kargil and Leh and Ladakh districts.

Punjab - Gurdaspur, Hoshiarpur, Ludhiana, Patiala and Sangrur districts.

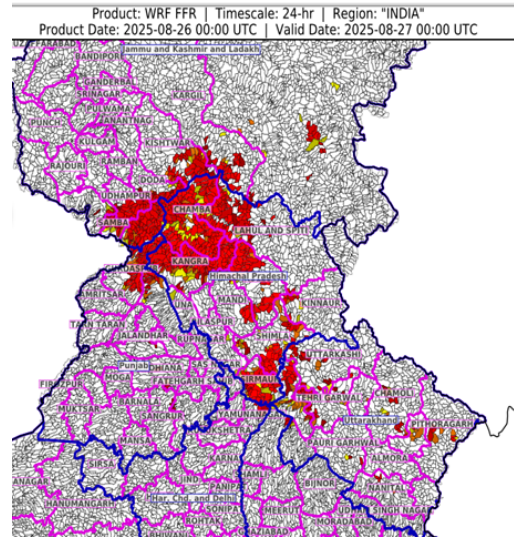
Low to Moderate flash flood risk likely over few watersheds & neighbourhoods of following Met Sub-divisions during next 24 hours.

Himachal Pradesh- Shimla, Sirmaur, Solan and Una districts.

Uttarakhand - Bageshwar, Chamoli, Dehradun, Nainital, Pauri Garhwal, Pithoragarh, Rudraprayag, Tehri Garwal and Uttarkashi districts.

Haryana-Chandigarh & Delhi - Ambala, Panchkula and Yamuna Nagar districts

Surface runoff/ Inundation may occur at some fully saturated soils & low-lying areas over Area of Concern (AoC) as shown in map due to expected rainfall occurrence in next 24 hours.



***Red color warning does not mean "Red Alert" Red color warning means "Take Action"**

Forecast and warning for any day is valid from 0830 hours IST of day till 0830 hours IST of next day

For more details kindly visit <https://mausam.imd.gov.in> or contact 011-2434-4599

(Service to the nation since 1875)



Table-1

7 Days Rainfall Forecast

S.No.	Subdivision	26- Aug	27- Aug	28- Aug	29- Aug	30- Aug	31- Aug	1- Sep
		Day 1	Day 2	Day 3	Day 4	Day 5	Day 6	Day 7
1	ANDAMAN & NICOBAR ISLANDS	WS	FWS	FWS	FWS	FWS	WS	WS
2	ARUNACHAL PRADESH	SCT	FWS	WS	WS	SCT	SCT	SCT
3	ASSAM & MEHGHALAYA	SCT	FWS	FWS	WS	SCT	SCT	SCT
4	N. M. M. & T.	FWS	FWS	WS	FWS	FWS	FWS	FWS
5	S.H. WEST BENGAL & SIKKIM	FWS	WS	WS	WS	WS	WS	WS
6	GANGETIC WEST BENGAL	SCT	FWS	FWS	WS	WS	WS	WS
7	ODISHA	WS	WS	FWS	FWS	FWS	FWS	FWS
8	JHARKHAND	SCT	SCT	FWS	WS	WS	WS	WS
9	BIHAR	SCT	SCT	SCT	SCT	FWS	FWS	FWS
10	EAST UTTAR PRADESH	SCT	SCT	SCT	FWS	FWS	FWS	FWS
11	WEST UTTAR PRADESH	FWS	SCT	SCT	SCT	FWS	FWS	FWS
12	UTTARAKHAND	WS	FWS	FWS	WS	WS	FWS	FWS
13	HARYANA, CHD & DELHI	WS	SCT	SCT	FWS	FWS	FWS	FWS
14	PUNJAB	WS	SCT	SCT	FWS	FWS	FWS	FWS
15	HIMACHAL PRADESH	WS	WS	FWS	FWS	WS	WS	WS
16	JAMMU AND KASHMIR AND LADAKH	WS	SCT	ISOL	ISOL	SCT	SCT	SCT
17	WEST RAJASTHAN	FWS	FWS	FWS	SCT	SCT	FWS	FWS
18	EAST RAJASTHAN	WS	FWS	FWS	FWS	FWS	FWS	FWS
19	WEST MADHYA PRADESH	FWS	FWS	FWS	WS	WS	WS	WS
20	EAST MADHYA PRADESH	FWS	FWS	FWS	WS	WS	WS	WS
21	GUJRAT REGION	WS	WS	WS	WS	WS	WS	WS
22	SAURASHTRA & KUTCH	WS	WS	WS	WS	WS	WS	WS
23	KONKAN & GOA	WS	WS	WS	WS	WS	WS	WS
24	MADHYA MAHARASHTRA	SCT	SCT	FWS	FWS	SCT	SCT	SCT
25	MARATHWADA	ISOL	SCT	SCT	FWS	ISOL	ISOL	ISOL
26	VIDARBHA	FWS	FWS	FWS	WS	WS	WS	WS
27	CHATTISGARH	WS	WS	WS	WS	WS	FWS	FWS
28	COASTAL ANDHRA PRADESH	FWS	FWS	SCT	SCT	SCT	SCT	SCT
29	TELANGANA	FWS	FWS	SCT	SCT	SCT	SCT	SCT
30	RAYALASEEMA	SCT	SCT	ISOL	ISOL	ISOL	ISOL	ISOL
31	TAMILNADU & PUDUCHERRY	ISOL	ISOL	ISOL	ISOL	ISOL	ISOL	ISOL
32	COSTAL KARNATAKA	WS	WS	WS	WS	WS	WS	WS
33	NORTH INTERIOR KARNATAKA	SCT	FWS	WS	FWS	SCT	SCT	SCT
34	SOUTH INTERIOR KARNATAKA	SCT	FWS	WS	FWS	SCT	ISOL	ISOL
35	KERALA	FWS	WS	WS	WS	WS	FWS	FWS
36	LAKSHDWEEP	FWS	WS	WS	WS	FWS	FWS	FWS

Legend	Category	%Stations
WS	Widespread/Most Places	76-100
FWS	Fairly Widespread/Many Places	51-75
SCT	Scattered/ A Few Places	26-50
ISOL	Isolated Places	1-25
DRY	No Rain	0

*Red color warning does not mean "Red Alert" Red color warning means "Take Action"
Forecast and warning for any day is valid from 0830 hours IST of day till 0830 hours IST of next day
For more details kindly visit <https://mausam.imd.gov.in> or contact 011-2434-4599

(Service to the nation since 1875)

Fig. 1: Maximum Temperatures Dated 2025-08-26

Fig. 2: Departure of Maximum Temp. Dated 2025-08-26

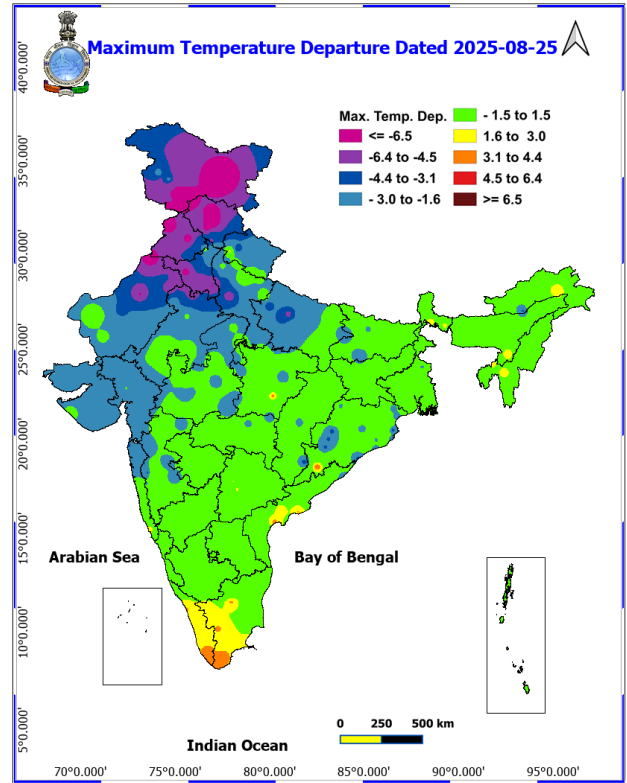
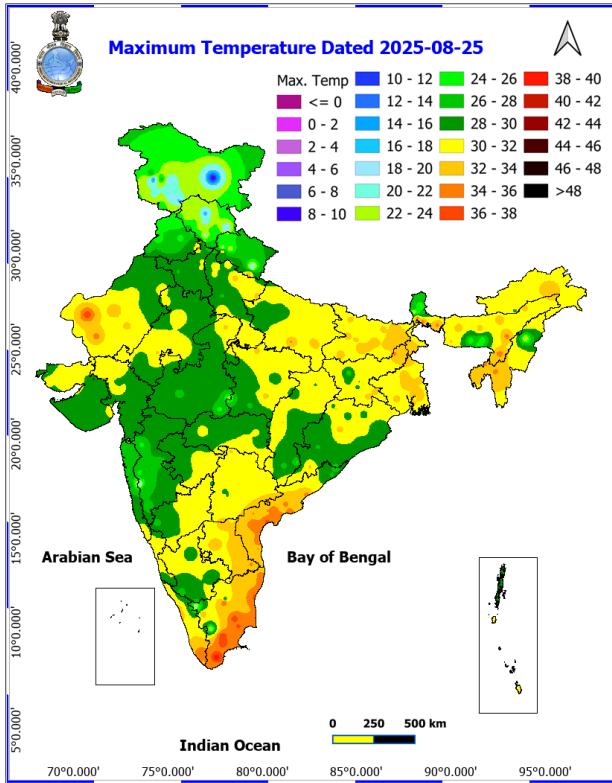
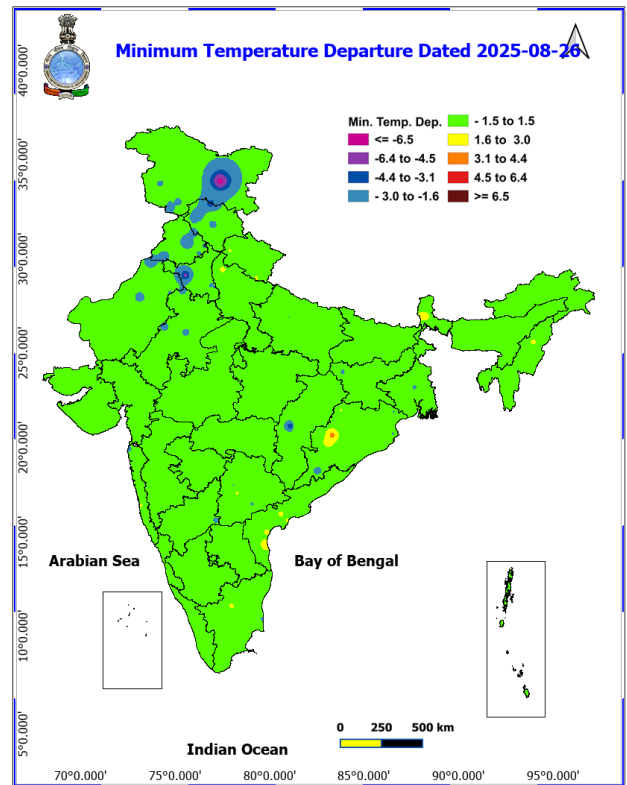
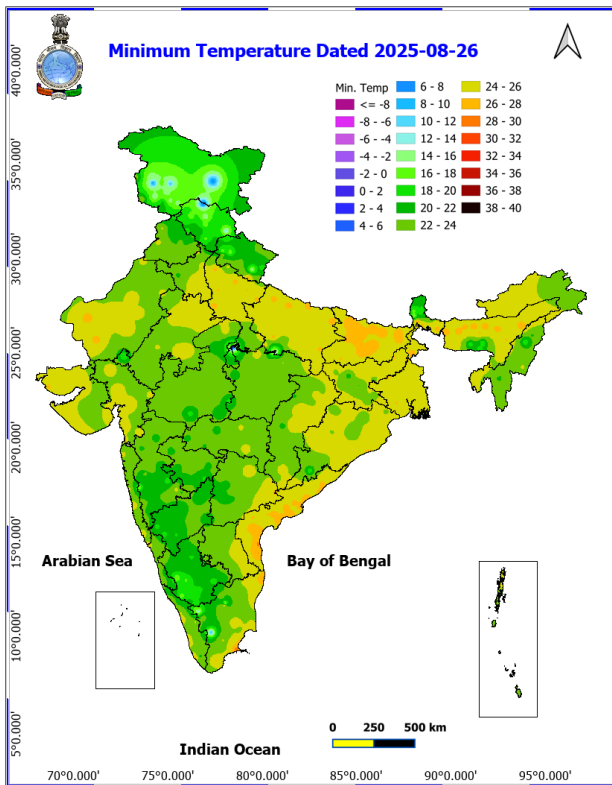


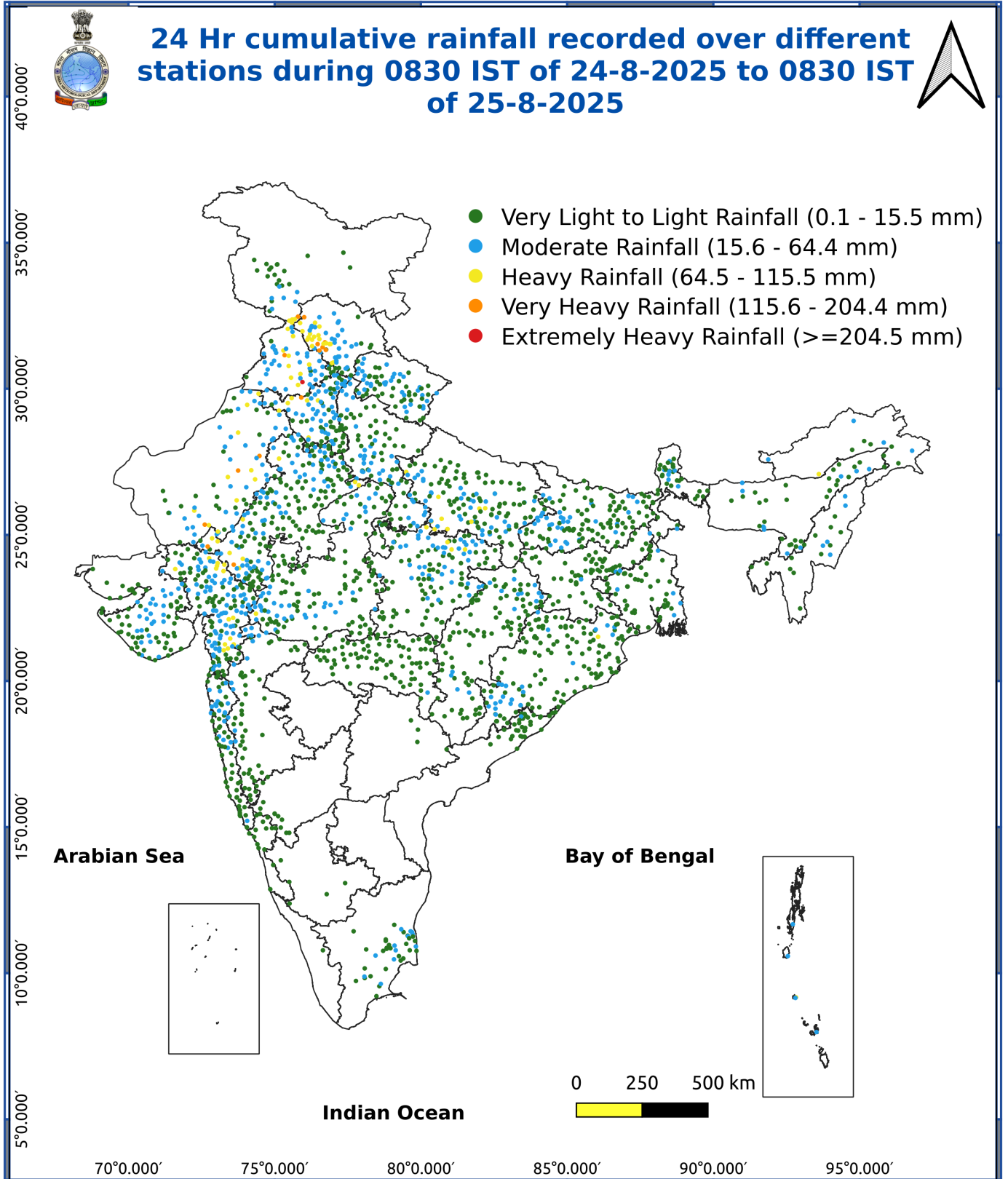
Fig. 3: Minimum Temperatures Dated 2025-08-26

Fig. 4: Departure of Minimum Temp. Dated 2025-08-26



***Red color warning does not mean "Red Alert" Red color warning means "Take Action"**
Forecast and warning for any day is valid from 0830 hours IST of day till 0830 hours IST of next day
For more details kindly visit <https://mausam.imd.gov.in> or contact 011-2434-4599

(Service to the nation since 1875)



Impact & Action Suggested due to

- **Very heavy rainfall over** Costal Andhra Pradesh & Yanam, Jammu & Kashmir, Himachal Pradesh, Punjab, Haryana, Chandigarh, West Rajasthan, Saurashtra & Kutch on 26th; Uttarakhand on 29th & 30th; East Rajasthan, Gujarat Region, Odisha on 26th & 27th August.

Impact Expected

- Localized Flooding of roads, water logging in low lying areas and closure of underpasses mainly in urban areas of the above region.
- Occasional reduction in visibility due to heavy rainfall.
- Disruption of traffic in major cities due to water logging in roads leading to increased travel time.
- Minor damage to kutcha roads.
- Possibilities of damage to vulnerable structure.
- Localized Landslides/Mudslides/landslips/mudslips/landsinks/mudsinks.
- Damage to horticulture and standing crops in some areas due to inundation.
- It may lead to riverine flooding in some river catchments (for riverine flooding please visit Web page of CWC)

Action Suggested

- Check for traffic congestion on your route before leaving for your destination.
- Follow any traffic advisories that are issued in this regard.
- Avoid going to areas that face the water logging problems often.
- Avoid staying in vulnerable structure.

Agromet advisories for various parts of the country

Agromet advisories for likely impact of Heavy / Heavy to Very Heavy Rainfall

(Based on the IBF and advisories issued by different AMFUs)

- In **Jammu and Kashmir**, do not allow water to stagnate in fields of maize, pulses, cowpea, bajra and vegetables in **Sub Tropical Zone**. Proper drainage should be ensured in the fields of paddy, maize, Pulses, horticultural and vegetable crops in **Intermediate Zone**.
- In **Himachal Pradesh**, maintain proper drainage channels in ginger, turmeric and maize fields in **Mid Hills Sub Humid Zone** and rice, maize and vegetable fields in **Sub Montane and Low Hills Sub Tropical Zone**. In **High Hills Sub Temperate Wet Zone**, harvest ripened tomatoes and ensure proper drainage in maize, kidney bean, vegetable fields and fruit orchards.
- In **Uttarakhand**, maintain proper drainage channels in fields of soybean, maize, pulses, finger millet, ginger, vegetable and fruit orchards in **Hill Zone**; barnyard millet, finger millet and green gram in **Sub Humid Sub Tropic Zone** and rice, green gram, black gram, sugarcane, maize, soybean, groundnut and vegetables in **Bhabar and Tarai Zone**.
- In **Punjab**, ensure proper drainage in fields of cotton and maize in **Western Zone**; sugarcane, maize and cotton in **Central Plain Zone**; cotton in **Western Plain Zone** and sugarcane, maize, soybean and green gram in **Sub-Montane Undulating Zone**. Maintain proper drainage in chilli fields and remove stagnant rainwater immediately after rainfall in **Undulating Plain Zone**.
- In **Haryana**, to prevent waterlogging make arrangements to drain out excess water from fields of sugarcane, cotton, maize, pearl millet and vegetables in **Eastern Zone** and cotton, pearl millet, green gram and cluster bean in **Western Zone**.
- In **West Rajasthan**, make provision to drain out excess rain water from fields of pearl millet, green gram and cluster bean in **Arid Western Plain Zone**; cotton, green gram and cluster bean in **Irrigated North Western Plain Zone** and vegetable nurseries, groundnut and pulses in **Transitional Plain Zone of Inland Drainage**. In **East Rajasthan**, make arrangements to drain out excess water from fields of maize, soybean, groundnut and

*Red color warning does not mean "Red Alert" Red color warning means "Take Action"

Forecast and warning for any day is valid from 0830 hours IST of day till 0830 hours IST of next day

For more details kindly visit <https://mausam.imd.gov.in> or contact 011-2434-4599

(Service to the nation since 1875)

vegetable nurseries in **Sub Humid Southern Plain and Aravali Hill Zone**; pearl millet, sorghum, maize, green gram, black gram, moth bean, sesame and cluster bean in **Flood Prone Eastern Plain Zone**; groundnut, green gram, moth bean, cowpea, pearl millet, maize, sorghum and vegetables in **Semi-Arid Eastern Plain Zone** and soybean, maize and cotton in **Southern Humid Plain Zone**.

- In **Gujarat**, make arrangements to drain out excess water from fields of castor, cotton, groundnut, pearl millet and sesame in **North Gujarat Zone**; rice, pearl millet, pigeon pea, green gram, black gram, cotton, soybean, maize, castor and vegetables in **Middle Gujarat Zone**; groundnut, cotton, sesame, black gram, green gram, pigeon pea and castor in **North Saurashtra Zone**; rice, cotton, green gram, black gram, pigeon pea, pearl millet and vegetables in **Bhal and Coastal Zone**; rice, sugarcane, vegetables and tuber crops in **South Gujarat Heavy Rainfall Zone**; groundnut, cotton, soybean, black gram, green gram, sesame and pigeon pea in **South Saurashtra Zone** and rice, cotton, sugarcane and pigeon pea in **South Gujarat Zone**.
- In **Odisha**, make provision for draining out excess rain water from fields of green gram, black gram, sugarcane, vegetables and fruit orchards in **East and South Eastern Coastal Plain Zone**; pulses, maize, pigeon pea, groundnut and vegetables in **North Eastern Ghat Zone**; rice, vegetables and fruit orchards in **North Eastern Coastal Plain Zone** and rice, maize, black gram and vegetables in **North Central Plateau Zone**.
- In **Madhya Pradesh**, provide adequate drainage in fields of soybean, maize and vegetables in **Kymore Plateau and Satpura Hill Zone** and soybean, green gram, black gram and maize in **Bundelkhand Zone**.
- In **Chhattisgarh**, ensure proper drainage in fields of rice and vegetables in **North Hill Zone** and maize, groundnut, soybean, pigeon pea and vegetables in **Chhattisgarh Plain Zone**. Postpone fresh transplanting of rice in low land areas in **North Hill Zone**.

Livestock / Fishery

- Keep the animals inside the shed during heavy rainfall and provide them balanced feed.
- Store feed and fodder in a safe place to prevent spoilage.
- Construct an outlet with proper netting around the ponds to drain out excess water, thereby preventing fish from escaping in case of overflow.

Agromet advisories for likely impact of Thunderstorm / Gusty Winds / Squally Winds

- Provide mechanical support to horticultural crops and staking or support to vegetables and young fruit plants / fruit-bearing plants to avoid lodging due to strong winds.

Legends & abbreviations:

Northwest India: Western Himalayan Region (Jammu-Kashmir-Ladakh-Gilgit-Baltistan-Muzaffarabad, Himachal Pradesh and Uttarakhand); Punjab, Haryana-Chandigarh-Delhi; West Uttar Pradesh, East Uttar Pradesh, West Rajasthan and East Rajasthan.

Central India: West Madhya Pradesh, East Madhya Pradesh, Vidarbha and Chhattisgarh.

East India: Bihar, Jharkhand, Sub-Himalayan West Bengal & Sikkim; Gangetic West Bengal, Odisha and Andaman & Nicobar Islands.

Northeast India: Arunachal Pradesh, Assam & Meghalaya and Nagaland, Manipur, Mizoram & Tripura.

West India: Gujarat Region, Saurashtra & Kutch, Konkan & Goa, Madhya Maharashtra and Marathawada.

South India: Coastal Andhra Pradesh & Yanam, Telangana, Rayalaseema, Coastal Karnataka, North Interior Karnataka, South Interior Karnataka, Kerala & Mahe, Tamil Nadu, Puducherry & Karaikal and Lakshadweep.

LEGENDS

- 1 अंडमान और निकोबार द्वीप समुह
- 2 अरुणाचल प्रदेश
- 3 असम और मेघालय
- 4 नागालैंड मनीपुर मीजोरम और त्रिपुरा
- 5 उप हिमालय पश्चिम बंगाल एवं सिक्किम
- 6 पश्चिम बंगाल
- 7 ओडिसा
- 8 झारखंड
- 9 बिहार
- 10 पूर्वी उत्तर प्रदेश
- 11 पश्चिम उत्तर प्रदेश
- 12 उत्तराखंड
- 13 हरियाणा चंडिगढ़ एवं दिल्ली
- 14 पंजाब
- 15 हिमाचल प्रदेश
- 16 जम्मू एवं कश्मीर एवं लद्दाख
- 17 पश्चिम राजस्थान
- 18 पूर्वी राजस्थान
- 19 पश्चिम मध्य प्रदेश
- 20 पूर्वी मध्य प्रदेश
- 21 गुजरात क्षेत्र
- 22 सौराष्ट्र एवं कच्छ
- 23 कोंकण एवं गोवा
- 24 मध्य महाराष्ट्र
- 25 मराठावाडा
- 26 विदर्भ
- 27 छत्तीसगढ़
- 28 तटीय आंध्र प्रदेश एवं यनम
- 29 तेलंगाना
- 30 रायलसीमा
- 31 तमिलनाडु, पुदुचेरी एवं कराईकल
- 32 तटिय कर्नाटक
- 33 आंतरिक उत्तरी कर्नाटक
- 34 आंतरिक दक्षिणी कर्नाटक
- 35 केरल एवं माहे
- 36 लक्षद्वीप



1. Andaman & Nicobar Islands
2. Arunachal Pradesh
3. Assam & Meghalaya
4. Nagaland, Manipur, Mizoram & Tripura
5. Sub-Himalayan West Bengal & Sikkim
6. Gangetic West Bengal
7. Orissa
8. Jharkhand
9. Bihar
10. East Uttar Pradesh
11. West Uttar Pradesh
12. Uttarakhand
13. Haryana, Chd & Delhi
14. Punjab
15. Himachal Pradesh
16. Jammu & Kashmir and Ladakh
17. West Rajasthan
18. East Rajasthan
19. West Madhya Pradesh
20. East Madhya Pradesh
21. Gujarat
22. Saurashtra
23. Konkan & Goa
24. Madhya Maharashtra
25. Marathawada
26. Vidharbha
27. Chhattisgarh
28. Coastal Andhra Pradesh & Yanam
29. Telangana
30. Rayalaseema
31. Tamilnadu, Puducherry & Karaikal
32. Coastal Karnataka
33. North Interior Karnataka
34. South Interior Karnataka
35. Kerala & Mahe
36. Lakshadweep

SPATIAL DISTRIBUTION (% of Stations reporting)

% Stations	Category	% Stations	Category
76-100	Widespread (WS/ Most Places)	26-50	Scattered (SCT/ A Few Places)
51-75	Fairly Widespread (FWS/ Many Places)	1-25	Isolated (ISOL)

Subdivision Colour

- NO WARNING
- WATCH (BE UPDATED)
- ALERT (BE PREPARED TO TAKE ACTION)
- WARNING (TAKE ACTION)

Probabilistic Forecast

Terms	Probability of Occurrence (%)
Unlikely	< 25
Likely	25 - 50
Very Likely	50 - 75
Most Likely	> 75

- | | | | |
|--------------------------|-----------------|----------------------|--------------------|
| Heavy Rain | Very Heavy Rain | Extremely Heavy Rain | Heavy Snow |
| Thunderstorm & Lightning | Hailstorm | Dust Storm | Dust Raising Winds |
| Strong surface winds | Heat Wave | Hot Day | Warm Night |
| Cold Wave | Cold Day | Ground Frost | Fog |
| Hot & Humid | | | |

*Red color warning does not mean "Red Alert" Red color warning means "Take Action"

Forecast and warning for any day is valid from 0830 hours IST of day till 0830 hours IST of next day

For more details kindly visit <https://mausam.imd.gov.in> or contact 011-2434-4599

(Service to the nation since 1875)

LEGENDS

WARNING

WARNING (TAKE ACTION)
ALERT (BE PREPARED)
WATCH (BE UPDATED)
NO WARNING (NO ACTION)

Probabilistic Forecast

Terms	Probability of Occurrence (%)
Unlikely	< 25
Likely	25 - 50
Very Likely	50 - 75
Most Likely	> 75



Rain/ Snow *

Heavy: 64.5 to 115.5 mm/cm *
Very Heavy: 115.6 to 204.4 mm/cm*
Extremely Heavy: > 204.4 mm/cm *



Heat Wave

When maximum temperature of a station reaches $\geq 40^{\circ}\text{C}$ for plains and $\geq 30^{\circ}\text{C}$ for hilly regions
(a) Based on Departure from normal

Heat Wave: Maximum Temperature Departure from normal 4.5°C to 6.4°C .
Severe Heat Wave: Maximum Temperature Departure from normal $\geq 6.5^{\circ}\text{C}$

(b). Based on Actual maximum temperature

Heat Wave: When actual maximum temperature $\geq 45^{\circ}\text{C}$.
Severe Heat Wave: When actual maximum temperature $\geq 47^{\circ}\text{C}$

(c). Criteria for heat wave for coastal stations

When maximum temperature departure is $> 4.5^{\circ}\text{C}$ from normal. Heat Wave may be described provided maximum temperature $\geq 37^{\circ}\text{C}$



Warm Night

When maximum temperature remains 40°C

Warm Night: When minimum temperature departure 4.5°C to 6.4°C .
Severe Warm Night: When minimum temperature departure $> 6.4^{\circ}\text{C}$.



Cold Wave

When minimum temperature of a station $\leq 10^{\circ}\text{C}$ for plains and $\leq 0^{\circ}\text{C}$ for hilly regions.

(a). Based on departure

Cold Wave: Minimum Temperature Departure from normal -4.5°C to -6.4°C .
Severe Cold Wave: Minimum Temperature Departure from normal $\leq -6.5^{\circ}\text{C}$

(b) Based on actual Minimum Temperature (for Plains only)

Cold Wave : When Minimum Temperature is $\leq 4.0^{\circ}\text{C}$
Severe Cold Wave: When Minimum Temperature is $\leq 2.0^{\circ}\text{C}$

(c) For Coastal Stations

When Minimum Temperature departure is $\leq -4.5^{\circ}\text{C}$ & actual Minimum Temperature is $\leq 15^{\circ}\text{C}$



Cold Day

When minimum temperature of a station $\leq 10^{\circ}\text{C}$ for plains and $\leq 0^{\circ}\text{C}$ for hilly regions
Based on departure

Cold Day: Maximum Temperature Departure from normal -4.5°C to -6.4°C .
Severe Cold Day: Maximum Temperature Departure from normal $\leq -6.5^{\circ}\text{C}$



Fog

Phenomenon of small droplets suspended in air and the horizontal visibility $< 1\text{km}$

Moderate Fog: When the visibility between 500-200 metres
Dense Fog: when the visibility between 50- 200 metres
Very Dense Fog: when the visibility < 50 metres



Thunderstorm

Sudden electrical discharges manifested by a flash of light (Lightning) and a sharp rumbling sound (thunder)



Dust/Sand Storm

An ensemble of particles of dust or sand energetically lifted to great heights by a strong and turbulent wind.



Frost

Ice deposits on ground

Air temperature $\leq 4^{\circ}\text{C}$ (over Plains)



Squall

A strong wind that rises suddenly, lasts for atleast 1 minute.

Moderate: Wind speed 52-61 kmph
Severe: Wind speed 62-87 kmph
Very Severe: Wind speed > 87 kmph



Sea State

Effect of various waves in the sea over specific area

Rough to very rough: Wind speed 41-62 kmph (22-33 knots) & Wave height 2.5-6 metre
High to very high: Wind speed 63-117 kmph (34-63 knots) & Wave height 6-14 metre
Phenomenal: Wind speed > 117 kmph (> 63 knots) & Wave height > 14 metre



Cyclone

Cyclonic Storm: Wind speed 62-87 kmph (34-47 knots)
Severe Cyclonic Storm: Wind speed 88-117 kmph (48-63 knots)
Very Severe Cyclonic Storm: Wind speed 118-165 kmph (64 - 89 knots)
Extremely Severe Cyclonic Storm: Wind speed 166-220 kmph (90 -119 knots)
Super Cyclone Strom: Wind speed > 220 kmph (> 119 knots)

*Red color warning does not mean "Red Alert" Red color warning means "Take Action"

Forecast and warning for any day is valid from 0830 hours IST of day till 0830 hours IST of next day

For more details kindly visit <https://mausam.imd.gov.in> or contact 011-2434-4599

(Service to the nation since 1875)