

2025-08-01

Time of Issue: 08:35:00 hours IST  
(Morning)

## ALL INDIA WEATHER SUMMARY AND FORECAST BULLETIN

### Significant Weather Features

#### Weather Forecast and Warnings

##### Northwest India:

- ♦ Isolated **heavy rainfall** likely over Jammu-Kashmir during 04<sup>th</sup> & 06<sup>th</sup> August; Himachal Pradesh & Uttarakhand during 01<sup>st</sup>-06<sup>th</sup> August; Punjab on 03<sup>rd</sup> & 04<sup>th</sup> August; Haryana, Chandigarh during 02<sup>nd</sup> -05<sup>th</sup> August; East Uttar Pradesh during 02<sup>nd</sup>-05<sup>th</sup> August; West Uttar Pradesh during 03<sup>rd</sup>-05<sup>th</sup> August; West Rajasthan 01<sup>st</sup> August; East Rajasthan on 01<sup>st</sup> August & during 03<sup>rd</sup> -06<sup>th</sup> August.
- ♦ Light/moderate rainfall at many places accompanied with thunderstorm & lightning likely over Western Himalayan region and many/some places over the plains during next 7 days.

##### Northeast India:

- ♦ **Extremely heavy rainfall** very likely at isolated places over Assam & Meghalaya on 02<sup>nd</sup> August.
- ♦ Light/moderate rainfall at many places accompanied with thunderstorm, lightning and isolated **heavy rainfall** likely to continue over Arunachal Pradesh, Assam & Meghalaya and Nagaland, Manipur, Mizoram & Tripura during 01<sup>st</sup>-06<sup>th</sup> August with isolated **very heavy rainfall** over Arunachal Pradesh during 01<sup>st</sup>-06<sup>th</sup> August; Assam & Meghalaya during 01<sup>st</sup> -03<sup>rd</sup> & 06<sup>th</sup> August.

##### East & Central India:

- ♦ Isolated **heavy rainfall** likely over Sub-Himalayan West Bengal & Sikkim during 01<sup>st</sup>-07<sup>th</sup> August; Gangetic West Bengal, Jharkhand on 01<sup>st</sup> August; Bihar during 01<sup>st</sup>-05<sup>th</sup> August; Chhattisgarh on 01<sup>st</sup> August; Madhya Pradesh during 04<sup>th</sup>-06<sup>th</sup> August with isolated **very heavy rainfall** over Sub-Himalayan West Bengal & Sikkim during 02<sup>nd</sup>-04<sup>th</sup>; Bihar on 02<sup>nd</sup> & 03<sup>rd</sup> August.
- ♦ Light to moderate rainfall at most/many places accompanied with thunderstorm & lightning likely over the region during next 5 days.

##### South Peninsular India:

- ♦ Isolated **heavy rainfall** likely over Tamil Nadu, Kerala & Mahe during 02<sup>nd</sup>-06<sup>th</sup> August.
- ♦ Strong surface winds (speed reaching 40-50 kmph) very likely over South Peninsular India during next 5 days.
- ♦ Light to moderate rainfall at some/many places over Kerala & Mahe, Lakshadweep, Karnataka, Rayalaseema,
- ♦ Coastal Andhra Pradesh & Yanam and Telangana during next 7 days.

##### West India:

- ♦ Light to moderate rainfall at many/some places very likely over the region during next 6-7 days.

### Main Weather Observations:

❖ **Rainfall distribution** (from 0830 hours IST to 1730 hours IST of yesterday): **at most places** over Sub-Himalayan West Bengal & Sikkim, Uttarakhand, West Uttar Pradesh, Gangetic West Bengal, Punjab, East Rajasthan, Arunachal Pradesh, Jharkhand, Haryana Chandigarh & Delhi, Coastal Karnataka and Kerala & Mahe; **at many places** over Odisha, Konkan & Goa, Madhya Maharashtra, Assam & Meghalaya, Himachal Pradesh, East Madhya Pradesh, Nagaland, Manipur, Mizoram & Tripura, Gujarat Region, Bihar, Jammu & Kashmir and Ladakh, West Madhya Pradesh, Saurashtra & Kutch, East Uttar Pradesh, Marathwada, Vidarbha, Chhattisgarh, Coastal Andhra Pradesh & Yanam, Telangana, West Rajasthan, Tamilnadu Puducherry & Karaikal, North Interior Karnataka, South Interior Karnataka and Lakshadweep; **Dry** over rest of the country.

❖ **Significant rainfall recorded(in cm) (from 0830 hours IST to 1730 hours IST of yesterday): Rajasthan:** Dholpur 12, Churu 15; **Haryana, Chandigarh & Delhi:** New Delhi (palam) AP (dist South West Delhi) 8, New Delhi-Ayanagar (dist South West Delhi) 5, Delhi-ridge (dist South Delhi), Rohtak (dist Rohtak) 3 Each; **East Uttar Pradesh:** Barabanki (dist Barabanki) 4; **West Uttar Pradesh:** Agra (dist Agra) 4, Najibabad (dist Bijnor) 3.

❖ **Heavy Rainfall observed (from 0830 hours IST to 1730 hours IST of yesterday): Very Heavy rainfall** observed at isolated places over Rajasthan; **Heavy rain** at isolated places over Haryana Chandigarh & Delhi.

❖ **Minimum Temperature Departures (as on 31-07-2025): markedly above normal(> 5.1°C)** at many places over Jammu-KashmirLadakh-Gilgit-Baltistan-Muzaffarabad; at isolated places over Assam & Meghalaya, Bihar, East Uttar Pradesh, West Uttar Pradesh, Himachal Pradesh, East Rajasthan and Saurashtra & Kutch. **appreciably above normal(3.1°C to 5.0°C)** at isolated places over Andaman & Nicobar Islands, Sub Himalayan West Bengal & Sikkim, West Rajasthan, West Madhya Pradesh, East Madhya Pradesh and Gujarat Region. **above normal(1.6°C to 3.0°C)** at few places over Madhya Maharashtra, Tamil Nadu, Puducherry & Karaikal and Coastal Karnataka; at isolated places over Nagaland, Manipur, Mizoram & Tripura, Odisha, Konkan & Goa, Marathwada, Coastal Andhra Pradesh & Yanam, Rayalaseema, South Interior Karnataka and Kerala & Mahe. **near normal(-1.5°C to 1.5°C)** at many places over Uttarakhand, Haryana-Chandigarh-Delhi and Chhattisgarh; at most places over Arunachal Pradesh, Gangetic West Bengal, Jharkhand, Vidarbha, Telangana and North Interior Karnataka; at few places over Punjab and Lakshadweep. **The lowest minimum temperature** of 17.6°C was reported at NARSINGHPUR (MADHYA PRADESH) over the Plains of India.

❖ **Maximum Temperature Departures (as on 31-07-2025): markedly above normal(> 5.1°C)** at many places over Jammu-KashmirLadakh-Gilgit-Baltistan-Muzaffarabad; at isolated places over Assam & Meghalaya, Odisha and Tamil Nadu, Puducherry & Karaikal. **appreciably above normal(3.1°C to 5.0°C)** at isolated places over Chhattisgarh. **above normal(1.6°C to 3.0°C)** at many places over Vidarbha and Coastal Andhra Pradesh & Yanam; at few places over Andaman & Nicobar Islands, Bihar, Telangana and Coastal Karnataka; at isolated places over Nagaland, Manipur, Mizoram & Tripura, Konkan & Goa, Madhya Maharashtra and Marathwada. **near normal(-1.5°C to 1.5°C)** at many places over Sub Himalayan West Bengal & Sikkim, Gujarat Region and North Interior Karnataka; at most places over Arunachal Pradesh, Himachal Pradesh, Saurashtra & Kutch, Rayalaseema and South Interior Karnataka; at few places over East Uttar Pradesh, West Uttar Pradesh, Uttarakhand, West Rajasthan, West Madhya Pradesh and Lakshadweep; at isolated places over Gangetic West Bengal, Jharkhand and East Madhya Pradesh. **The highest maximum temperature** of 41.3°C was reported at MADURAI (A) (TAMIL NADU).

\*Red color warning does not mean "Red Alert" Red color warning means "Take Action"

Forecast and warning for any day is valid from 0830 hours IST of day till 0830 hours IST of next day

For more details kindly visit <https://mausam.imd.gov.in> or contact 011-2434-4599

(Service to the nation since 1875)

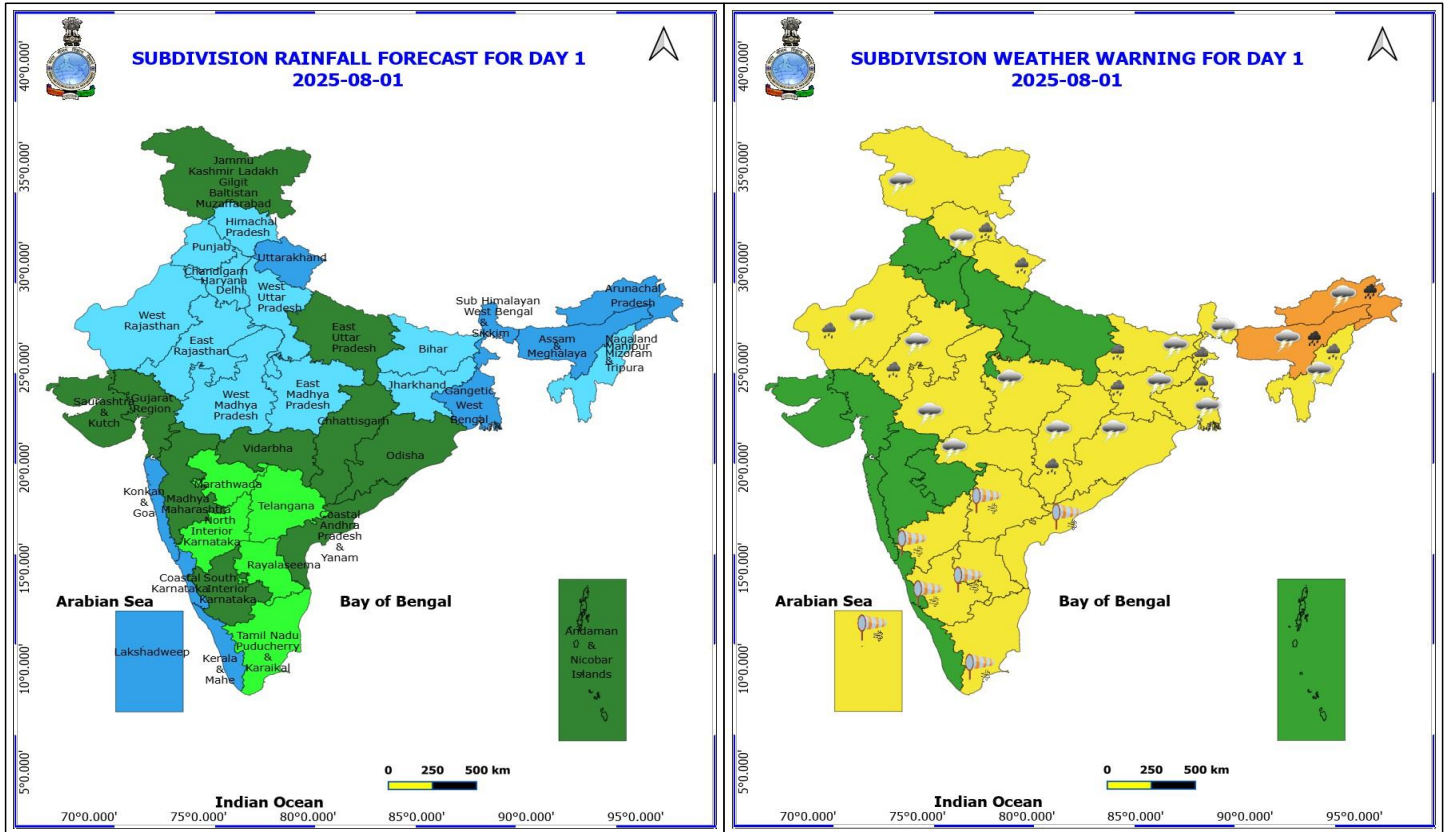


Meteorological Analysis (Based on 0530 hours IST)

- ❖ The **monsoon trough** at mean sea level now passes through Sri Ganganagar, Hissar, Delhi, Gorakhpur, Patna, Malda, Canning and thence southeastwards to the northeast Bay of Bengal.
- ❖ The **upper air cyclonic circulation** over Southwest Uttar Pradesh & neighbourhood persists and now extends upto 1.5 km above mean sea level.
- ❖ The **upper air cyclonic circulation** over northern parts of Gangetic West Bengal now lies over northern Gangetic West Bengal & adjoining Bangladesh and extends upto 9.6 km above mean sea level tilting southwestwards with height.
- ❖ The **upper air cyclonic circulation** over northeast Rajasthan now lies over Haryana & neighbourhood and extends upto 3.1 km above mean sea level.
- ❖ The **Western Disturbance** as a trough in middle & upper tropospheric levels with its axis at 5.8 km above mean sea level roughly along Long. 70°E to the north of Lat. 32°N persists.

Weather Outlook for subsequent 3 days

- ◆ **Fairly widespread to widespread rainfall** likely over the most parts of the country except Madhya Maharashtra and Marathwada where Isolated rainfall is likely.



**1 August (Day 1)**

- ❖ **Heavy to Very Heavy Rainfall** very likely at isolated places over Arunachal Pradesh and Assam & Meghalaya.
- ❖ **Heavy Rainfall** very likely at isolated places over Bihar, Chhattisgarh, Himachal Pradesh, Jharkhand, Nagaland, Manipur, Mizoram and Tripura, Rajasthan, Uttarakhand and West Bengal & Sikkim.
- ❖ **Thunderstorm accompanied with lightning & gusty winds(30-40kmph)** very likely at isolated places over Bihar, Jammu-Kashmir-Ladakh-Gilgit-Baltistan-Muzaffarabad, Jharkhand, Odisha, West Bengal & Sikkim and West Madhya Pradesh.
- ❖ **Thunderstorm accompanied with Lightning** very likely at isolated places over Arunachal Pradesh, Assam & Meghalaya, Chhattisgarh, East Madhya Pradesh, Himachal Pradesh, Nagaland, Manipur, Mizoram and Tripura, Rajasthan and Vidarbha.
- ❖ **Strong Surface Winds** very likely at isolated places over Andhra Pradesh, Interior Karnataka, Lakshadweep, Tamil Nadu Puducherry & Karaikal and Telangana.

Squally wind with speed reaching 45 kmph to 55 kmph gusting to 65 kmph is likely to prevail along and off Somalia, Yemen & Oman coasts, most parts of westcentral Arabian Sea & adjoining, some parts of eastcentral Arabian Sea, many parts of southwest Arabian Sea, southern parts of north Arabian Sea.

Squally weather with wind speed reaching 40 - 50 kmph gusting to 60 kmph likely to prevail along and off Goa, Konkan coasts, over many parts of eastcentral Arabian Sea, some parts of southeast Arabian Sea and adjoining, some parts of southwest Arabian Sea, over some parts of Maldives, Lakshadweep, Comorin areas, over most parts of eastcentral, many parts of westcentral Bay of Bengal & adjoining, some parts of north Bay of Bengal, few parts of southwest Bay of Bengal.

**\*Red color warning does not mean "Red Alert" Red color warning means "Take Action"**

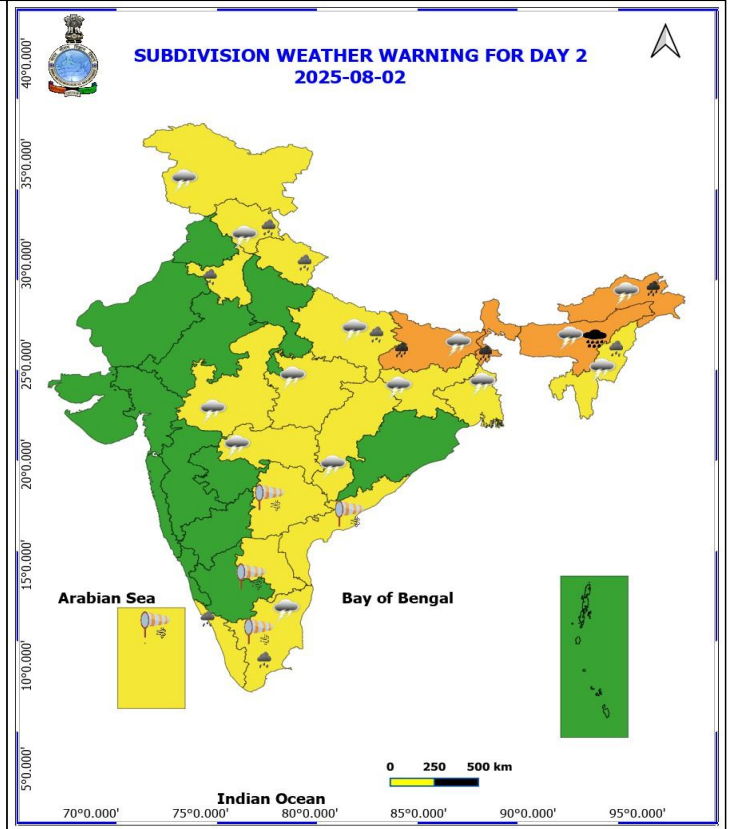
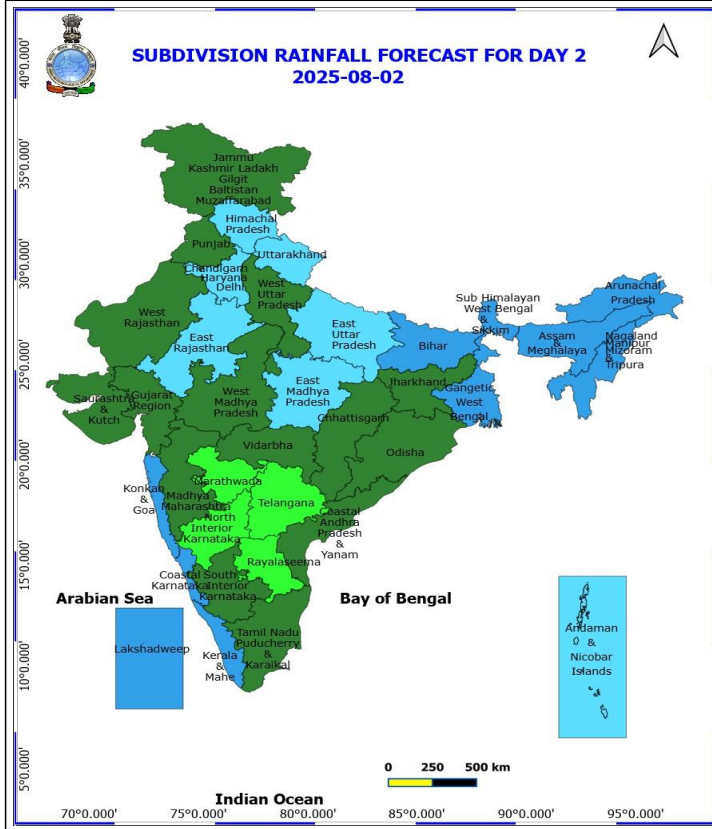
Forecast and warning for any day is valid from 0830 hours IST of day till 0830 hours IST of next day

For more details kindly visit <https://mausam.imd.gov.in> or contact 011-2434-4599

(Service to the nation since 1875)



Squally weather with wind speed reaching 45 - 55 kmph gusting to 65 kmph likely to prevail along and off Kerala, Karnataka, Gujarat coasts, over many parts of Lakshadweep, Comorin areas, over Gulf of Mannar.



## 2 August (Day 2)

- ❖ **Heavy to Very Heavy Rainfall with isolated Extremely Heavy Rainfall** very likely at isolated places over Assam & Meghalaya.
- ❖ **Heavy to Very Heavy Rainfall** very likely at isolated places over Arunachal Pradesh, Bihar and Sub Himalayan West Bengal & Sikkim.
- ❖ **Heavy Rainfall** very likely at isolated places over East Uttar Pradesh, Haryana, Chandigarh & Delhi, Himachal Pradesh, Kerala & Mahe, Nagaland, Manipur, Mizoram and Tripura, Tamil Nadu Puducherry & Karaikal and Uttarakhand.
- ❖ **Thunderstorm accompanied with lightning & gusty winds(30-40kmph)** very likely at isolated places over Bihar, Gangetic West Bengal, Jammu-Kashmir-Ladakh-Gilgit-Baltistan-Muzaffarabad, Jharkhand and West Madhya Pradesh.
- ❖ **Thunderstorm accompanied with Lightning** very likely at isolated places over Arunachal Pradesh, Assam & Meghalaya, Chhattisgarh, East Madhya Pradesh, East Uttar Pradesh, Himachal Pradesh, Nagaland, Manipur, Mizoram and Tripura, Tamil Nadu Puducherry & Karaikal and Vidarbha.
- ❖ **Strong Surface Winds** very likely at isolated places over Andhra Pradesh, Lakshadweep, Tamil Nadu Puducherry & Karaikal and Telangana.

Squally wind with speed reaching 45 kmph to 55 kmph gusting to 65 kmph is likely to prevail along and off Somalia, Yemen & south Oman coasts, most parts of westcentral Arabian Sea & adjoining, some parts of eastcentral Arabian Sea, many parts of southwest Arabian Sea, southern parts of north Arabian Sea.

Squally weather with wind speed reaching 40 - 50 kmph gusting to 60 kmph likely to prevail over many parts of

**\*Red color warning does not mean "Red Alert" Red color warning means "Take Action"**

Forecast and warning for any day is valid from 0830 hours IST of day till 0830 hours IST of next day

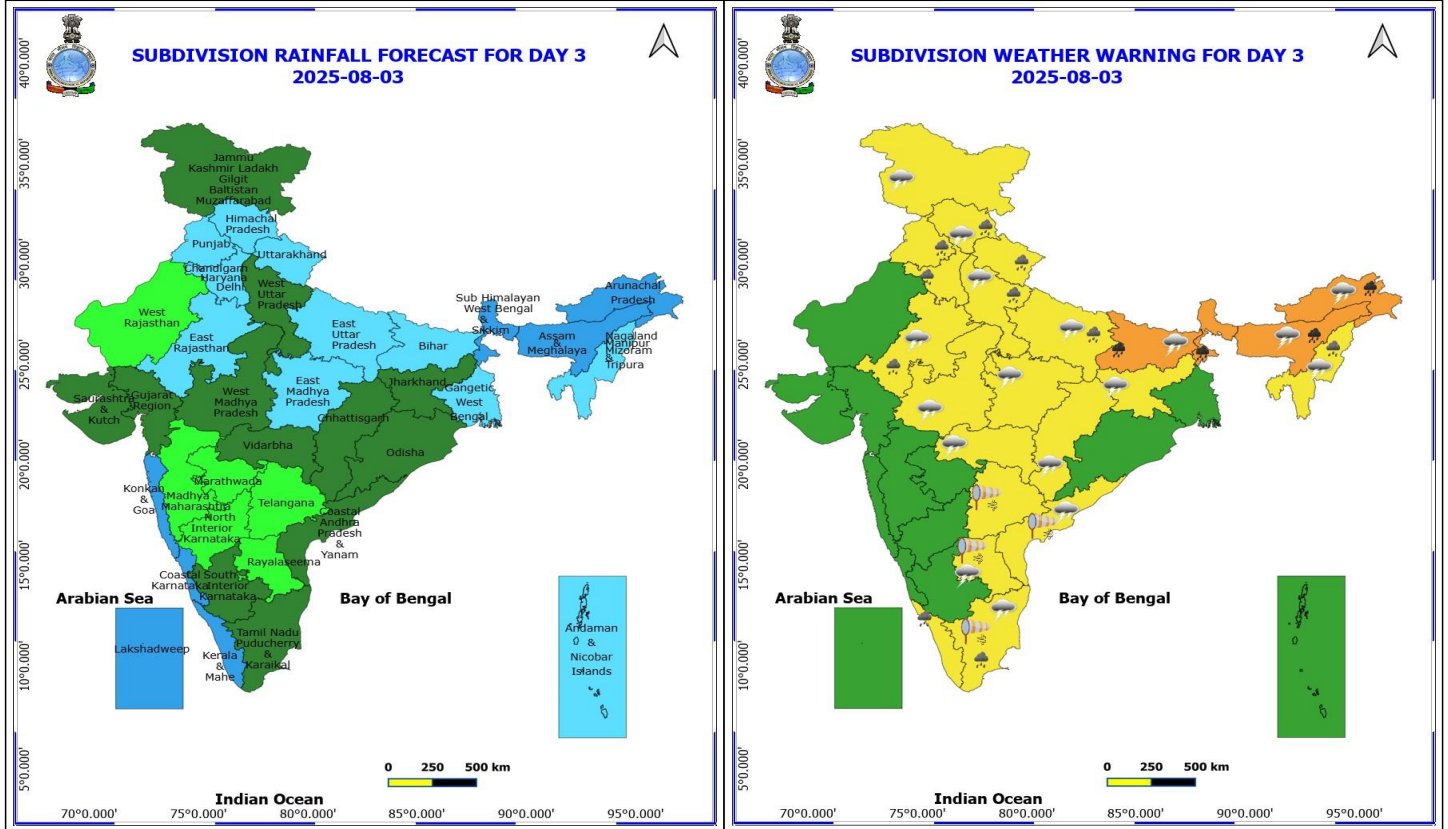
For more details kindly visit <https://mausam.imd.gov.in> or contact 011-2434-4599

(Service to the nation since 1875)



eastcentral Arabian Sea, some parts of southeast Arabian Sea, some parts of southwest Arabian Sea, over some parts of Comorin area, over Gulf of Mannar, over some northern parts of eastcentral, adjoining northeast Bay of Bengal, few parts of southwest Bay of Bengal.

Squally weather with wind speed reaching 45 - 55 kmph gusting to 65 kmph likely to prevail along and off Karnataka coast, over many parts of Lakshadweep area, northern parts of southeast Arabian Sea.



### 3 August (Day 3)

- ❖ **Heavy to Very Heavy Rainfall** very likely at isolated places over Arunachal Pradesh, Assam & Meghalaya, Bihar and Sub Himalayan West Bengal & Sikkim.
- ❖ **Heavy Rainfall** very likely at isolated places over East Rajasthan, Haryana, Chandigarh & Delhi, Himachal Pradesh, Kerala & Mahe, Nagaland, Manipur, Mizoram and Tripura, Punjab, Tamil Nadu Puducherry & Karaikal, Uttar Pradesh and Uttarakhand.
- ❖ **Thunderstorm accompanied with lightning & gusty winds(30-40kmph)** very likely at isolated places over Bihar, Jammu-Kashmir-Ladakh-Gilgit-Baltistan-Muzaffarabad, Jharkhand and West Madhya Pradesh.
- ❖ **Thunderstorm accompanied with Lightning** very likely at isolated places over Andhra Pradesh, Arunachal Pradesh, Assam & Meghalaya, Chhattisgarh, East Madhya Pradesh, East Rajasthan, Himachal Pradesh, Nagaland, Manipur, Mizoram and Tripura, Tamil Nadu Puducherry & Karaikal, Uttar Pradesh and Vidarbha.
- ❖ **Strong Surface Winds** very likely at isolated places over Andhra Pradesh, Tamil Nadu Puducherry & Karaikal and Telangana.

Squally wind with speed reaching 45 kmph to 55 kmph gusting to 65 kmph is likely to prevail along and off Somalia, Yemen & south Oman coasts, most parts of westcentral Arabian Sea & adjoining parts of eastcentral Arabian Sea, many parts of southwest Arabian Sea.

Squally weather with wind speed reaching 40 - 50 kmph gusting to 60 kmph likely to prevail over many parts of eastcentral Arabian Sea, southern parts of north Arabian Sea, some parts of southeast Arabian Sea, some parts of southwest Arabian Sea, over some parts of Comorin area, over Gulf of Mannar, over few parts of southwest Bay of Bengal, few parts of northeast Bay of Bengal.

**\*Red color warning does not mean "Red Alert" Red color warning means "Take Action"**

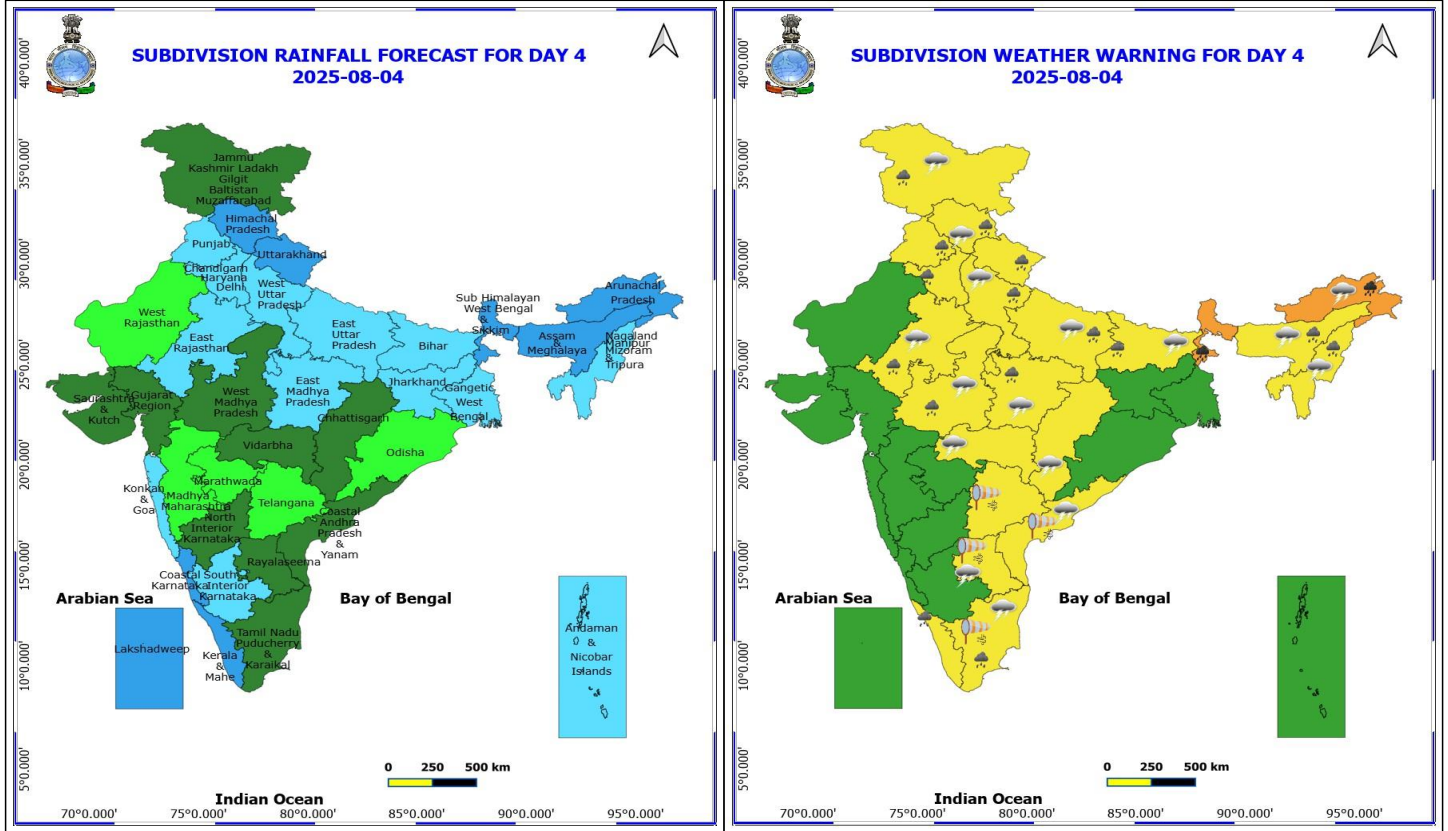
Forecast and warning for any day is valid from 0830 hours IST of day till 0830 hours IST of next day

For more details kindly visit <https://mausam.imd.gov.in> or contact 011-2434-4599

(Service to the nation since 1875)



Squally weather with wind speed reaching 45 - 55 kmph gusting to 65 kmph likely to prevail along and off Karnataka coast, over some parts of Lakshadweep area.



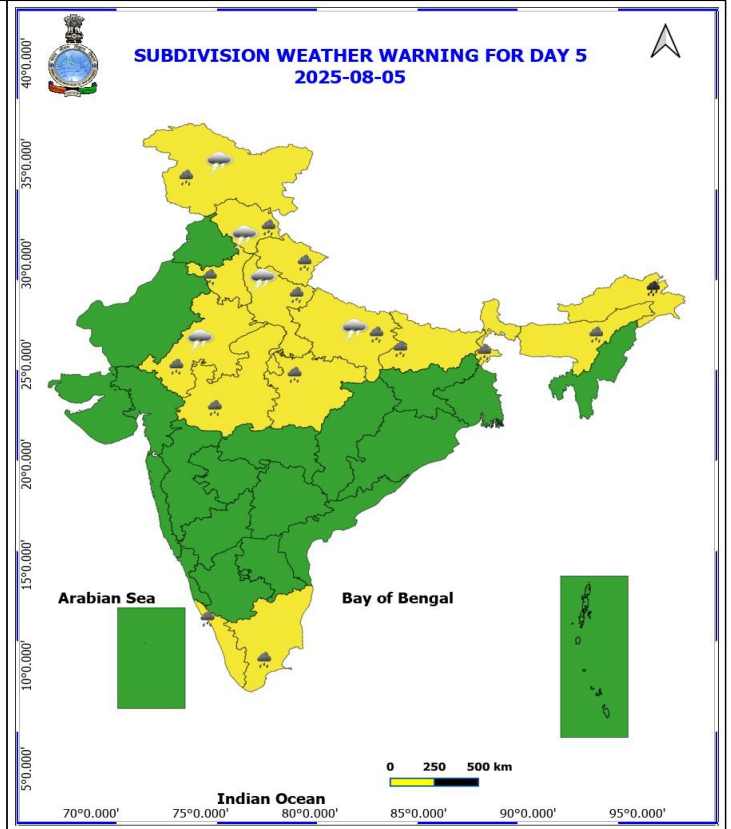
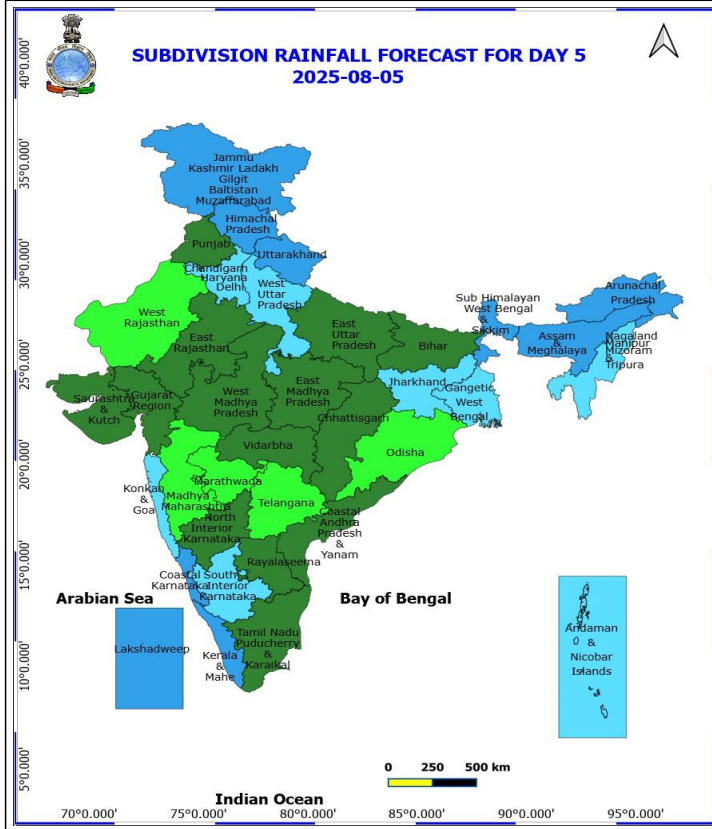
**4 August (Day 4)**

- ❖ **Heavy to Very Heavy Rainfall** likely at isolated places over Arunachal Pradesh and Sub Himalayan West Bengal & Sikkim.
- ❖ **Heavy Rainfall** likely at isolated places over Assam & Meghalaya, Bihar, East Rajasthan, Haryana, Chandigarh & Delhi, Himachal Pradesh, Jammu-Kashmir-Ladakh-Gilgit-Baltistan-Muzaffarabad, Kerala & Mahe, Madhya Pradesh, Nagaland, Manipur, Mizoram and Tripura, Punjab, Tamil Nadu Puducherry & Karaikal, Uttar Pradesh and Uttarakhand.
- ❖ **Thunderstorm accompanied with lightning & gusty winds(30-40kmph)** likely at isolated places over Bihar, Jammu-Kashmir-Ladakh-Gilgit-Baltistan-Muzaffarabad and West Madhya Pradesh.
- ❖ **Thunderstorm accompanied with Lightning** likely at isolated places over Andhra Pradesh, Arunachal Pradesh, Assam & Meghalaya, Chhattisgarh, East Madhya Pradesh, East Rajasthan, Himachal Pradesh, Nagaland, Manipur, Mizoram and Tripura, Tamil Nadu Puducherry & Karaikal, Uttar Pradesh and Vidarbha.
- ❖ **Strong Surface Winds** likely at isolated places over Andhra Pradesh, Tamil Nadu Puducherry & Karaikal and Telangana.

Squally wind with speed reaching 45 kmph to 55 kmph gusting to 65 kmph is likely to prevail along and off Somalia, Yemen & south Oman coasts, most parts of westcentral Arabian Sea & adjoining parts of eastcentral Arabian Sea, many parts of southwest Arabian Sea, southern parts of northwest Arabian Sea.

Squally weather with wind speed reaching 40 - 50 kmph gusting to 60 kmph likely to prevail over many parts of eastcentral Arabian Sea, many parts of southeast Arabian Sea, adjoining parts of Lakshadweep area, some parts of southwest Arabian Sea, over some parts of Comorin area, over Gulf of Mannar, over some parts of southwest Bay of Bengal.

**\*Red color warning does not mean "Red Alert" Red color warning means "Take Action"**  
Forecast and warning for any day is valid from 0830 hours IST of day till 0830 hours IST of next day  
For more details kindly visit <https://mausam.imd.gov.in> or contact 011-2434-4599

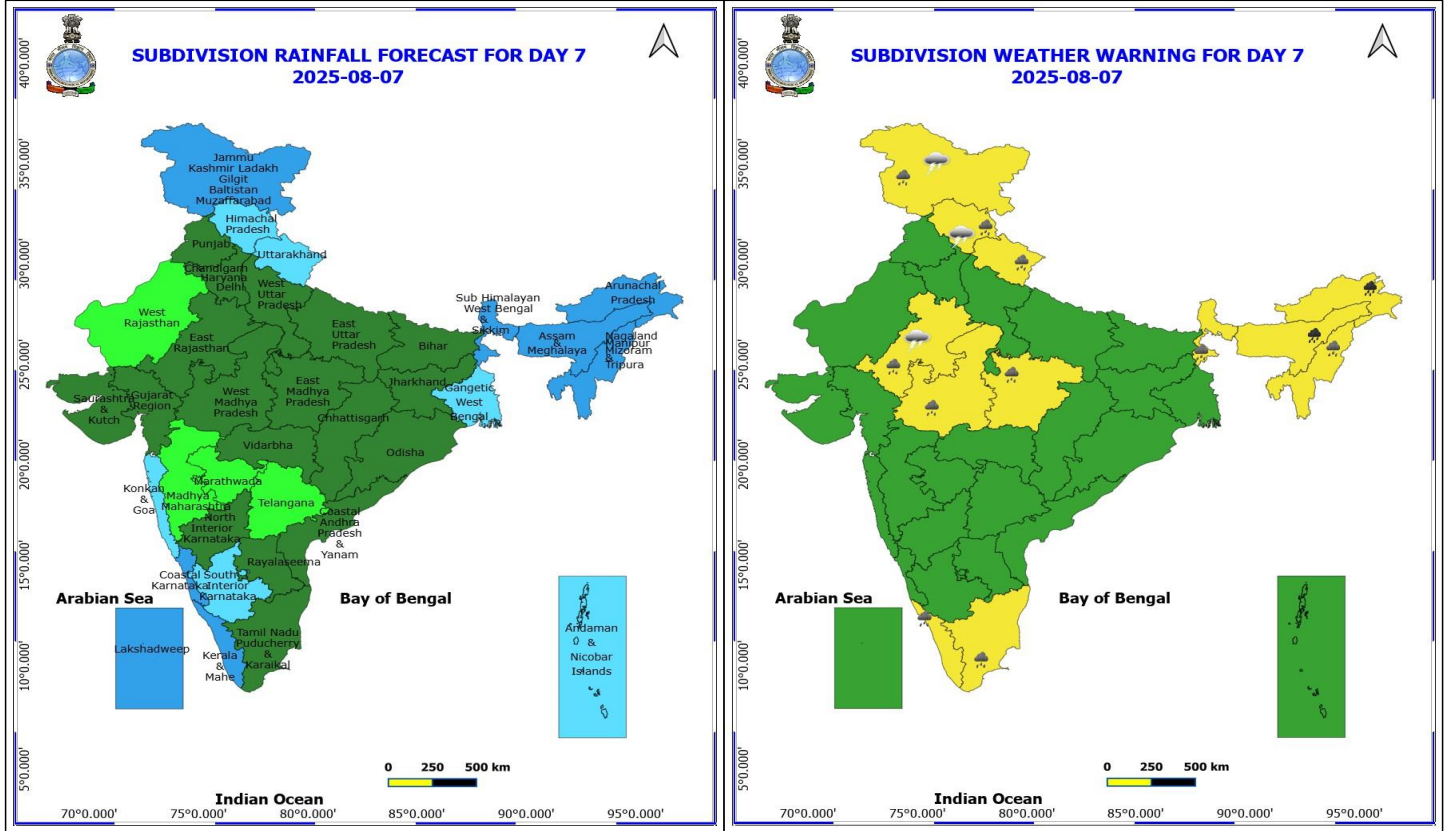


### 5 August (Day 5)

- ❖ **Heavy to Very Heavy Rainfall** likely at isolated places over Arunachal Pradesh.
- ❖ **Heavy Rainfall** likely at isolated places over Assam & Meghalaya, Bihar, East Rajasthan, Haryana, Chandigarh & Delhi, Himachal Pradesh, Jammu-Kashmir-Ladakh-Gilgit-Baltistan-Muzaffargarh, Kerala & Mahe, Madhya Pradesh, Sub Himalayan West Bengal & Sikkim, Tamil Nadu Puducherry & Karaikal, Uttar Pradesh and Uttarakhand.
- ❖ **Thunderstorm accompanied with lightning & gusty winds(30-40kmph)** likely at isolated places over Jammu-Kashmir-Ladakh-Gilgit-Baltistan-Muzaffargarh.
- ❖ **Thunderstorm accompanied with Lightning** likely at isolated places over East Rajasthan, Himachal Pradesh and Uttar Pradesh.

**No Fishermen Warning**





**7 August (Day 7)**

- ❖ **Heavy to Very Heavy Rainfall** likely at isolated places over Arunachal Pradesh and Assam & Meghalaya.
  - ❖ **Heavy Rainfall** likely at isolated places over East Rajasthan, Himachal Pradesh, Jammu-Kashmir-Ladakh-Gilgit-Baltistan-Muzaffarabad, Kerala & Mahe, Madhya Pradesh, Nagaland, Manipur, Mizoram and Tripura, Sub Himalayan West Bengal & Sikkim, Tamil Nadu Puducherry & Karaikal and Uttarakhand.
  - ❖ **Thunderstorm accompanied with lightning & gusty winds(30-40kmph)** likely at isolated places over Jammu-Kashmir-Ladakh-Gilgit-Baltistan-Muzaffarabad.
  - ❖ **Thunderstorm accompanied with Lightning** likely at isolated places over East Rajasthan and Himachal Pradesh.
- No Fishermen Warning**



**Flash Flood Warning**

**24 hours Outlook for the Flash Flood Risk (FFR) till 0530 IST of 02-08-2025:**

**Low to Moderate flash flood risk** likely over few watersheds & neighbourhoods of following Met Sub-divisions during next 24 hours.

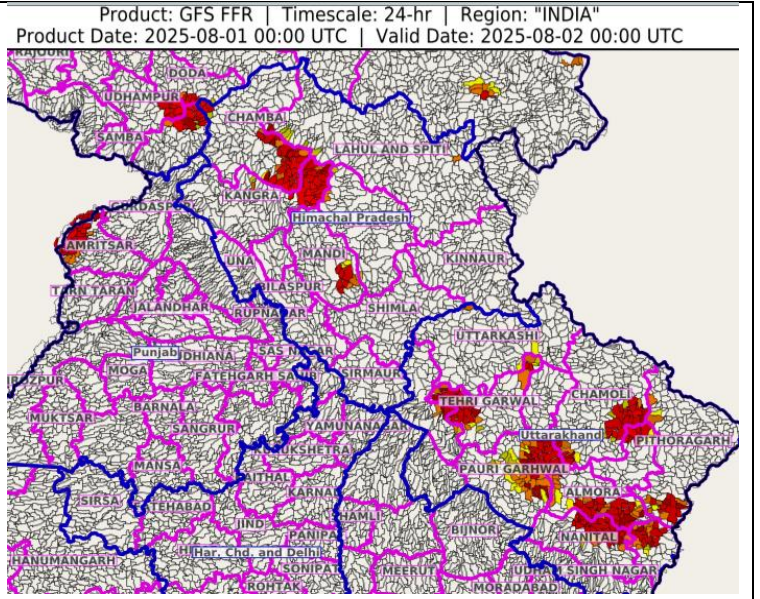
**Himachal Pradesh** - Chamba, Kangra and Mandi districts.

**Jammu & Kashmir & Ladakh** - Doda, Kathua and Udhampur districts.

**Punjab** - Amritsar district.

**Uttarakhand** - Almora, Bageshwar, Chamoli, Champawat, Dehradun, Nanital, Pauri Garhwal, Pithoragarh, Tehri Garwal and Uttarkashi districts.

Surface runoff/ Inundation may occur at some fully saturated soils & low-lying areas over Area of Concern (AoC) as shown in map due to expected rainfall occurrence in next 24 hours.



**\*Red color warning does not mean "Red Alert" Red color warning means "Take Action"**

Forecast and warning for any day is valid from 0830 hours IST of day till 0830 hours IST of next day

For more details kindly visit <https://mausam.imd.gov.in> or contact 011-2434-4599

(Service to the nation since 1875)



## Table-1

### 7 Days Rainfall Forecast

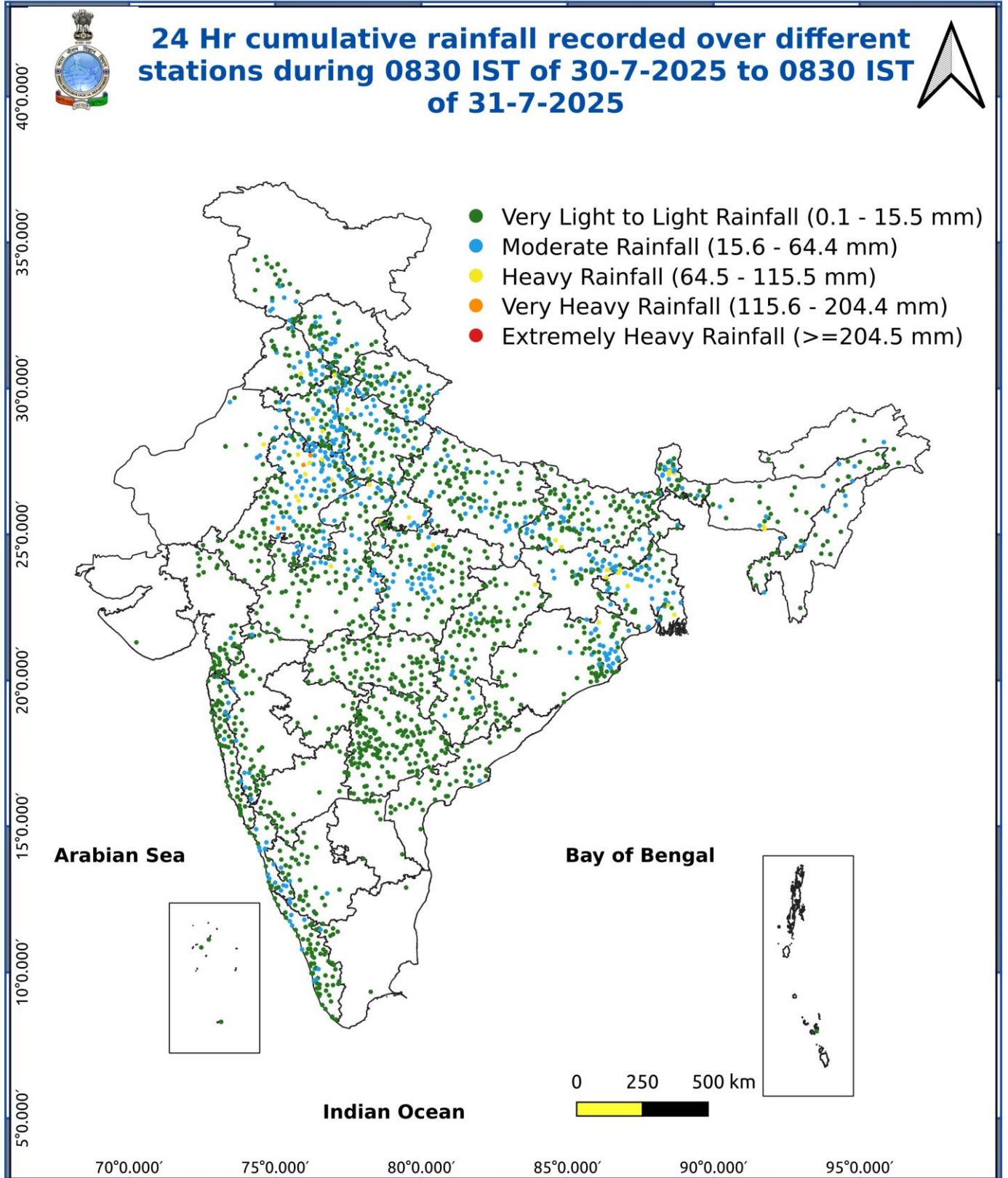
S.No.	Subdivision	1- Aug	2- Aug	3- Aug	4- Aug	5- Aug	6- Aug	7- Aug
		Day 1	Day 2	Day 3	Day 4	Day 5	Day 6	Day 7
1	ANDAMAN & NICOBAR ISLANDS	SCT	FWS	FWS	FWS	FWS	FWS	FWS
2	ARUNACHAL PRADESH	WS	WS	WS	WS	WS	WS	WS
3	ASSAM & MEHGHALAYA	WS	WS	WS	WS	WS	WS	WS
4	N. M. M. & T.	FWS	WS	FWS	FWS	FWS	WS	WS
5	S.H. WEST BENGAL & SIKKIM	WS	WS	WS	WS	WS	WS	WS
6	GANGETIC WEST BENGAL	WS	WS	FWS	FWS	FWS	FWS	FWS
7	ODISHA	SCT	SCT	SCT	ISOL	ISOL	SCT	SCT
8	JHARKHAND	FWS	SCT	SCT	FWS	FWS	SCT	SCT
9	BIHAR	FWS	WS	FWS	FWS	SCT	SCT	SCT
10	EAST UTTAR PRADESH	SCT	FWS	FWS	FWS	SCT	SCT	SCT
11	WEST UTTAR PRADESH	FWS	SCT	SCT	FWS	FWS	SCT	SCT
12	UTTARAKHAND	WS	FWS	FWS	WS	WS	FWS	FWS
13	HARYANA, CHD & DELHI	FWS	FWS	FWS	FWS	FWS	SCT	SCT
14	PUNJAB	FWS	SCT	FWS	FWS	SCT	SCT	SCT
15	HIMACHAL PRADESH	FWS	FWS	FWS	WS	WS	FWS	FWS
16	JAMMU AND KASHMIR AND LADAKH	SCT	SCT	SCT	SCT	WS	WS	WS
17	WEST RAJASTHAN	FWS	SCT	ISOL	ISOL	ISOL	ISOL	ISOL
18	EAST RAJASTHAN	FWS	FWS	FWS	FWS	SCT	SCT	SCT
19	WEST MADHYA PRADESH	FWS	SCT	SCT	SCT	SCT	SCT	SCT
20	EAST MADHYA PRADESH	FWS	FWS	FWS	FWS	SCT	SCT	SCT
21	GUJRAT REGION	SCT	SCT	SCT	SCT	SCT	SCT	SCT
22	SAURASHTRA & KUTCH	SCT	SCT	SCT	SCT	SCT	SCT	SCT
23	KONKAN & GOA	WS	WS	WS	FWS	FWS	FWS	FWS
24	MADHYA MAHARASHTRA	SCT	SCT	ISOL	ISOL	ISOL	ISOL	ISOL
25	MARATHWADA	ISOL	ISOL	ISOL	ISOL	ISOL	ISOL	ISOL
26	VIDARBHA	SCT	SCT	SCT	SCT	SCT	SCT	SCT
27	CHATTISGARH	SCT	SCT	SCT	SCT	SCT	SCT	SCT
28	COASTAL ANDHRA PRADESH	SCT	SCT	SCT	SCT	SCT	SCT	SCT
29	TELANGANA	ISOL	ISOL	ISOL	ISOL	ISOL	ISOL	ISOL
30	RAYALASEEMA	ISOL	ISOL	ISOL	SCT	SCT	SCT	SCT
31	TAMILNADU & PUDUCHERRY	ISOL	SCT	SCT	SCT	SCT	SCT	SCT
32	COSTAL KARNATAKA	WS	WS	WS	WS	WS	WS	WS
33	NORTH INTERIOR KARNATAKA	ISOL	ISOL	ISOL	SCT	SCT	SCT	SCT
34	SOUTH INTERIOR KARNATAKA	SCT	SCT	SCT	FWS	FWS	FWS	FWS
35	KERALA	WS	WS	WS	WS	WS	WS	WS
36	LAKSHDWEEP	WS	WS	WS	WS	WS	WS	WS

Legend	Category	%Stations
WS	Widespread/Most Places	76-100
FWS	Fairly Widespread/Many Places	51-75
SCT	Scattered/ A Few Places	26-50
ISOL	Isolated Places	1-25
DRY	No Rain	0

**\*Red color warning does not mean "Red Alert" Red color warning means "Take Action"**  
Forecast and warning for any day is valid from 0830 hours IST of day till 0830 hours IST of next day  
For more details kindly visit <https://mausam.imd.gov.in> or contact 011-2434-4599

(Service to the nation since 1875)





**\*Red color warning does not mean "Red Alert" Red color warning means "Take Action"**  
Forecast and warning for any day is valid from 0830 hours IST of day till 0830 hours IST of next day  
For more details kindly visit <https://mausam.imd.gov.in> or contact 011-2434-4599

(Service to the nation since 1875)

### Impact & Action Suggested due to

- ✓ **Extremely heavy rainfall** at isolated places over Assam & Meghalaya on 02nd August.
- ✓ **Very heavy rainfall** over Arunachal Pradesh during 01<sup>st</sup>-06<sup>th</sup> August; Assam & Meghalaya during 01<sup>st</sup>-03<sup>rd</sup> & 06<sup>th</sup> August; Sub-Himalayan West Bengal & Sikkim during 02<sup>nd</sup>-04<sup>th</sup>; Bihar on 02<sup>nd</sup> & 03<sup>rd</sup> August.

### Impact Expected

- Localized Flooding of roads, water logging in low lying areas and closure of underpasses mainly in urban areas of the above region.
- Occasional reduction in visibility due to heavy rainfall.
- Disruption of traffic in major cities due to water logging in roads leading to increased travel time.
- Minor damage to kutcha roads.
- Possibilities of damage to vulnerable structure.
- Localized Landslides/Mudslides/landslips/mudslips/landsinks/mudsinks.
- Damage to horticulture and standing crops in some areas due to inundation.
- It may lead to riverine flooding in some river catchments (for riverine flooding please visit Web page of CWC)

### Action Suggested

- Check for traffic congestion on your route before leaving for your destination.
- Follow any traffic advisories that are issued in this regard.
- Avoid going to areas that face the water logging problems often.
- Avoid staying in vulnerable structure.

### Agromet advisories for likely impact of Heavy / Heavy to Very Heavy / Extremely Heavy Rainfall

- In **East Rajasthan**, postpone sowing of rice nurseries, maize, soybean and black gram and make arrangement for removal of excess water from already sown fields in **Southeastern Humid Plain Zone**. Make provision to drain out excess water from green gram, pearl millet, cluster bean and sesame in **Sub Humid Southern Plain** and **Aravali Hill Zone** and **Flood Prone Eastern Plain Zone**; from soybean, cotton, black gram and maize in **Southern Humid Plain Zone**; from pearl millet, maize, groundnut and vegetables in **Semi Arid Eastern Plain Zone**.
- In **Madhya Pradesh**, postpone sowing of pearl millet and vegetables and arrange for proper drainage from already sown black gram, green gram, soybean, pearl millet and vegetables fields in **Gird Zone** till cessation of heavy rains. Arrange proper drainage facilities in the fields of rice, soybean, maize, sugarcane and vegetables in **Central Narmada Valley Zone**; soybean, groundnut, black gram and cotton in **Malwa Plateau Zone**; soybean, rice, maize and pigeon pea in **Vindhyan Plateau Zone**.
- In **Madhya Maharashtra**, make arrangement to drain out excess water from rice and finger millet fields in *ghat* areas.
- In **Uttarakhand**, maintain proper drainage channels in fields of rice in **Bhabar and Tarai Zone**, black gram in **Hill Zone** and rice, barnyard millet, finger millet and cucumber in **Sub Humid SubTropic Zone**.
- In **Himachal Pradesh**, provide drainage channels in low-lying areas in rice, maize, pulses and vegetables to prevent water stagnation in **Sub-Montane & Low Hills Sub-Tropical Zone**. Strengthen plant supports for creepers and tall vegetable crops (e.g., tomato, capsicum). In **High Hills Sub Temperate Wet Zone**, provide proper drainage channels in vegetables, maize, finger millets and kidney beans.
- In **Bihar**, provide adequate drainage in the fields of paddy, Pigeon pea, kharif maize, Okra and plantations in **South Bihar Alluvial Zone**.
- In **West Bengal**, make proper arrangements for drainage in vegetable beds, standing vegetable crops and betel gardens in **Coastal Saline Zone**.
- In **Odisha**, ensure proper drainage in all crop fields (especially maize and vegetables) in high rainfall areas of **Eastern and South-Eastern Ghat Zones** to prevent waterlogging. In **North Eastern Coastal Plain Zone**, drain out excess water from rice nurseries, jute and vegetable fields.



- In **Jammu & Kashmir**, postpone irrigation in transplanted rice and vegetables. Do not allow excess rainwater stagnation in maize, pulses and vegetable fields in **Sub Tropical Zone**. In **Intermediate Zone**, postpone intercultural operations in maize and vegetables. Ensure proper drainage in *kharif* pulses. In **Valley Temperate Zone**, maintain proper drainage channels in pulses and beans to remove excess water.
- In **Arunachal Pradesh**, postpone sowing of finger millet and fresh transplanting of rice (in low land). Provide drainage in WRC rice, finger millet and maize.
- In **Meghalaya**, maintain proper drainage channels around the nursery beds. Make provision for draining out excess water from vegetable fields and repair bunds in lowland paddy fields.
- In **Mizoram**, harvest matured cobs of maize. Create strong bunds around rice fields to retain rainwater and reduce runoff.

#### Livestock / Fishery

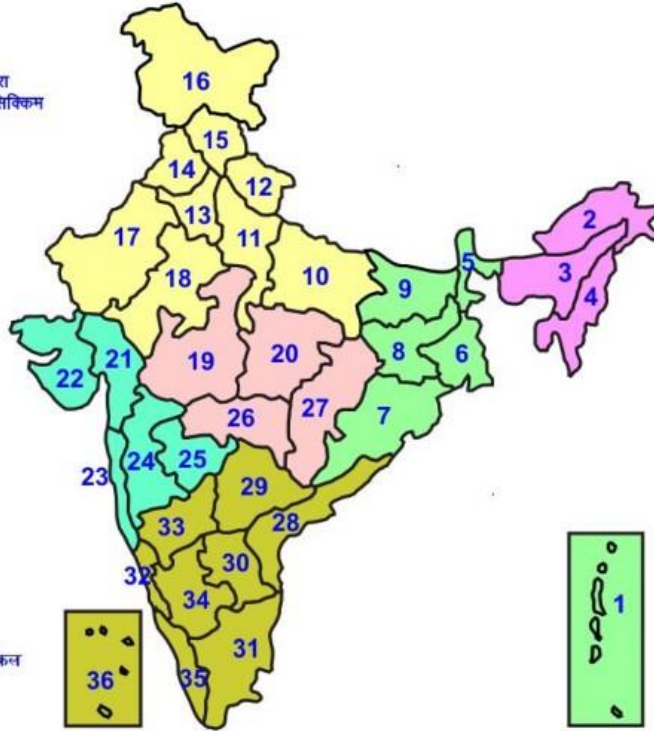
- Keep the animals inside the shed during heavy rainfall and provide them balanced feed.
- Store feed and fodder in a safe place to prevent spoilage.
- Construct an outlet with proper netting around the ponds to drain out excess water, thereby preventing fish from escaping in case of overflow.

#### Agromet advisories for likely impact of Thunderstorm / Gusty Winds / Squally Winds

- Provide mechanical support to horticultural crops and staking or support to vegetables and young fruit plants / fruit-bearing plants to avoid lodging due to strong winds.

## LEGENDS

- 1 अंडमान और निकोबार द्वीप समुह
- 2 अरुणाचल प्रदेश
- 3 असम और मेघालय
- 4 नागालैंड मनीपुर मीजोरम और त्रिपुरा
- 5 उप हिमालय पश्चिम बंगाल एवं सिक्किम
- 6 पश्चिम बंगाल
- 7 ओडिसा
- 8 झारखंड
- 9 बिहार
- 10 पूर्वी उत्तर प्रदेश
- 11 पश्चिम उत्तर प्रदेश
- 12 उत्तराखंड
- 13 हरियाणा चंडिगढ़ एवं दिल्ली
- 14 पंजाब
- 15 हिमाचल प्रदेश
- 16 जम्मू एवं कश्मीर एवं लद्दाख
- 17 पश्चिम राजस्थान
- 18 पूर्वी राजस्थान
- 19 पश्चिम मध्य प्रदेश
- 20 पूर्वी मध्य प्रदेश
- 21 गुजरात क्षेत्र
- 22 सौराष्ट्र एवं कच्छ
- 23 कोंकण एवं गोवा
- 24 मध्य महाराष्ट्र
- 25 मराठावाडा
- 26 विदर्भ
- 27 छत्तीसगढ़
- 28 तटीय आंध्र प्रदेश एवं यनम
- 29 तेलंगाना
- 30 रायलसेमा
- 31 तमिलनाडु, पुदुचेरी एवं कराईकल
- 32 तटिय कर्नाटक
- 33 आंतरिक उत्तरी कर्नाटक
- 34 आंतरिक दक्षिणी कर्नाटक
- 35 केरल एवं माहे
- 36 लक्षद्वीप



1. Andaman & Nicobar Islands
2. Arunachal Pradesh
3. Assam & Meghalaya
4. Nagaland, Manipur, Mizoram & Tripura
5. Sub-Himalayan West Bengal & Sikkim
6. Gangetic West Bengal
7. Orissa
8. Jharkhand
9. Bihar
10. East Uttar Pradesh
11. West Uttar Pradesh
12. Uttarakhand
13. Haryana, Chd & Delhi
14. Punjab
15. Himachal Pradesh
16. Jammu & Kashmir and Ladakh
17. West Rajasthan
18. East Rajasthan
19. West Madhya Pradesh
20. East Madhya Pradesh
21. Gujarat
22. Saurashtra
23. Konkan & Goa
24. Madhya Maharashtra
25. Marathwada
26. Vidharbha
27. Chhattisgarh
28. Coastal Andhra Pradesh & Yanam
29. Telangana
30. Rayalaseema
31. Tamilnadu, Puducherry & Karaikal
32. Coastal Karnataka
33. North Interior Karnataka
34. South Interior Karnataka
35. Kerala & Mahe
36. Lakshadweep

## SPATIAL DISTRIBUTION (% of Stations reporting)

% Stations	Category	% Stations	Category
76-100	Widespread (WS/ Most Places)	26-50	Scattered (SCT/ A Few Places)
51-75	Fairly Widespread (FWS/ Many Places)	1-25	Isolated (ISOL)

### Subdivision Colour

- NO WARNING
- WATCH (BE UPDATED)
- ALERT (BE PREPARED TO TAKE ACTION)
- WARNING (TAKE ACTION)

### Probabilistic Forecast

Terms	Probability of Occurrence (%)
Unlikely	< 25
Likely	25 - 50
Very Likely	50 - 75
Most Likely	> 75

- |                          |                 |                      |                    |
|--------------------------|-----------------|----------------------|--------------------|
| Heavy Rain               | Very Heavy Rain | Extremely Heavy Rain | Heavy Snow         |
| Thunderstorm & Lightning | Hailstorm       | Dust Storm           | Dust Raising Winds |
| Strong surface winds     | Heat Wave       | Hot Day              | Warm Night         |
| Cold Wave                | Cold Day        | Ground Frost         | Fog                |
| Hot & Humid              |                 |                      |                    |

\*Red color warning does not mean "Red Alert" Red color warning means "Take Action"

Forecast and warning for any day is valid from 0830 hours IST of day till 0830 hours IST of next day

For more details kindly visit <https://mausam.imd.gov.in> or contact 011-2434-4599

(Service to the nation since 1875)

## LEGENDS

### WARNING

WARNING (TAKE ACTION)
ALERT (BE PREPARED)
WATCH (BE UPDATED)
NO WARNING (NO ACTION)

### Probabilistic Forecast

Terms	Probability of Occurrence (%)
Unlikely	< 25
Likely	25 - 50
Very Likely	50 - 75
Most Likely	> 75



Heavy: 64.5 to 115.5 mm/cm \*  
Very Heavy: 115.6 to 204.4 mm/cm \*  
Extremely Heavy: > 204.4 mm/cm \*



When maximum temperature of a station reaches  $\geq 40^{\circ}\text{C}$  for plains and  $\geq 30^{\circ}\text{C}$  for hilly regions  
(a) Based on Departure from normal

Heat Wave: Maximum Temperature Departure from normal  $4.5^{\circ}\text{C}$  to  $6.4^{\circ}\text{C}$ .  
Severe Heat Wave: Maximum Temperature Departure from normal  $\geq 6.5^{\circ}\text{C}$

(b). Based on Actual maximum temperature

Heat Wave: When actual maximum temperature  $\geq 45^{\circ}\text{C}$ .  
Severe Heat Wave: When actual maximum temperature  $\geq 47^{\circ}\text{C}$

(c). Criteria for heat wave for coastal stations

When maximum temperature departure is  $> 4.5^{\circ}\text{C}$  from normal. Heat Wave may be described provided maximum temperature  $\geq 37^{\circ}\text{C}$



When maximum temperature remains  $40^{\circ}\text{C}$

Warm Night: When minimum temperature departure  $4.5^{\circ}\text{C}$  to  $6.4^{\circ}\text{C}$ .  
Severe Warm Night: When minimum temperature departure  $> 6.4^{\circ}\text{C}$ .



When minimum temperature of a station  $\leq 10^{\circ}\text{C}$  for plains and  $\leq 0^{\circ}\text{C}$  for hilly regions.

(a). Based on departure

Cold Wave: Minimum Temperature Departure from normal  $-4.5^{\circ}\text{C}$  to  $-6.4^{\circ}\text{C}$ .  
Severe Cold Wave: Minimum Temperature Departure from normal  $\leq -6.5^{\circ}\text{C}$

(b) Based on actual Minimum Temperature (for Plains only)

Cold Wave : When Minimum Temperature is  $\leq 4.0^{\circ}\text{C}$   
Severe Cold Wave: When Minimum Temperature is  $\leq 2.0^{\circ}\text{C}$

(c) For Coastal Stations

When Minimum Temperature departure is  $\leq -4.5^{\circ}\text{C}$  & actual Minimum Temperature is  $\leq 15^{\circ}\text{C}$



When minimum temperature of a station  $\leq 10^{\circ}\text{C}$  for plains and  $\leq 0^{\circ}\text{C}$  for hilly regions  
Based on departure

Cold Day: Maximum Temperature Departure from normal  $-4.5^{\circ}\text{C}$  to  $-6.4^{\circ}\text{C}$ .  
Severe Cold Day: Maximum Temperature Departure from normal  $\leq -6.5^{\circ}\text{C}$



Phenomenon of small droplets suspended in air and the horizontal visibility  $< 1\text{km}$

Moderate Fog: When the visibility between 500-200 metres  
Dense Fog: when the visibility between 50- 200 metres  
Very Dense Fog: when the visibility  $< 50$  metres



Sudden electrical discharges manifested by a flash of light (Lightning) and a sharp rumbling sound (thunder)



An ensemble of particles of dust or sand energetically lifted to great heights by a strong and turbulent wind.



Ice deposits on ground

Air temperature  $\leq 4^{\circ}\text{C}$  ( over Plains)



A strong wind that rises suddenly, lasts for atleast 1 minute.

Moderate: Wind speed 52-61 kmph  
Severe: Wind speed 62-87 kmph  
Very Severe: Wind speed  $> 87$  kmph



Effect of various waves in the sea over specific area

Rough to very rough: Wind speed 41-62 kmph (22-33 knots) & Wave height 2.5-6 metre  
High to very high: Wind speed 63-117 kmph ( 34-63 knots) & Wave height 6-14 metre  
Phenomenal: Wind speed  $> 117$  kmph ( $> 63$  knots) & Wave height  $> 14$  metre



Cyclonic Storm: Wind speed 62-87 kmph (34-47 knots)  
Severe Cyclonic Storm: Wind speed 88-117 kmph (48-63 knots)  
Very Severe Cyclonic Storm: Wind speed 118-165 kmph (64 - 89 knots)  
Extremely Severe Cyclonic Storm: Wind speed 166-220 kmph (90 -119 knots)  
Super Cyclone Storm: Wind speed  $> 220$  kmph ( $> 119$  knots)

\*Red color warning does not mean "Red Alert" Red color warning means "Take Action"

Forecast and warning for any day is valid from 0830 hours IST of day till 0830 hours IST of next day

For more details kindly visit <https://mausam.imd.gov.in> or contact 011-2434-4599

(Service to the nation since 1875)