

2025-09-17

Time of Issue: 08:24:00 hours IST
(Morning)

ALL INDIA WEATHER SUMMARY AND FORECAST BULLETIN

Significant Weather Features

Northwest India:

Light to moderate rain/thunderstorm at some/isolated places with **isolated heavy rainfall** likely over East Uttar Pradesh on 18th & 19th September with **heavy to very heavy rainfall** Uttarakhand, East Uttar Pradesh on 17th September.

East & Central India:

Light to moderate rain/thunderstorm at most/many places with isolated **heavy rainfall** likely over West Madhya Pradesh, Chhattisgarh, Jharkhand on 17th; Andaman & Nicobar Islands during 17th -20th; Sub-Himalayan West Bengal & Sikkim on 17th -18th; Bihar 17th -19th September with isolated **very heavy falls over Bihar, Sub-Himalayan West Bengal & Sikkim on 17th September.**

Northeast India:

Light/moderate rain/thunderstorm at most/many places with isolated **heavy rainfall** likely over Assam & Meghalaya during the week; Arunachal Pradesh during the week except on 18th; Nagaland, Manipur, Mizoram & Tripura during 17th & 19th -22nd September.

South Peninsular India:

Light to moderate rain/thunderstorm at many/some places with isolated **heavy rainfall** likely over Tamil Nadu during 17th-19th; Rayalaseema, Telangana & North Interior Karnataka, Coastal Karnataka and South Interior Karnataka on 17th, Kerala & Mahe on 17th & 18th September.

Strong surface winds (speed reaching 30-40 kmph) very likely over Coastal Andhra Pradesh & Yanam and Rayalaseema during next 5 days.

West India:

Light to moderate rain/thunderstorm at many/some places with **isolated heavy rainfall** likely over Madhya Maharashtra, Marathwada on 17th, Konkan & Goa on 17th -18th.

***Red color warning does not mean "Red Alert" Red color warning means "Take Action"**

Forecast and warning for any day is valid from 0830 hours IST of day till 0830 hours IST of next day

For more details kindly visit <https://mausam.imd.gov.in> or contact 011-2434-4599

(Service to the nation since 1875)

Main Weather Observations:

❖ **Rainfall distribution** (from 0830 hours IST of yesterday to 0530 hours IST of today): **at most places** over Arunachal Pradesh, Himachal Pradesh, Konkan & Goa, Uttarakhand, Gangetic West Bengal, Sub-himalayan West Bengal & Sikkim, Marathwada, Assam & Meghalaya, Vidarbha, Bihar, Madhya Maharashtra, East Madhya Pradesh, North Interior Karnataka, Chhattisgarh, Andaman & Nicobar Islands, Coastal Karnataka, Telangana and Lakshadweep; **at many places** over West Madhya Pradesh, Saurashtra & Kutch, Gujarat Region, Punjab, Kerala & Mahe, West Uttar Pradesh, Jharkhand, South Interior Karnataka, Nagaland, Manipur, Mizoram & Tripura, Tamilnadu Puducherry & Karaikal, East Uttar Pradesh, Coastal Andhra Pradesh & Yanam, Odisha, Jammu & Kashmir and Ladakh and Rayalaseema; **Dry** over rest of the country.

❖ **Significant rainfall recorded(in cm)** (from 0830 hours IST of yesterday to 0530 hours IST of today): Arunachal Pradesh: Pasighat (dist East Siang) 12; Assam & Meghalaya: North Lakhimpur (dist Lakhimpur) 11, Cherrapunji (dist East Khasi Hills) 7, Guwahati (dist Kamrup Metropolitan), Dhubri (dist Dhubri) 6 Each; **Vidarbha**: Nagpur-sonegaon Airport (dist Nagpur) 5; **Bihar**: Gaya (dist Gaya) 5; Tamilnadu puducherry & karaikal: Adiramapatinam (dist Thanjavur) 5, Chennai (nungambakkam) (dist Chennai) 2; East Uttar Pradesh: Bahraich (dist Bahraich) 4, Kanpur Airforce (dist Kanpur Nagar) 2; Madhya Maharashtra: Pune- Shivajinagar (dist Pune) 4; Coastal Andhra Pradesh & Yanam: Amaravati-ap-obs2 (dist Guntur) 3, Kakinada (dist Kakinada) 2; Nagaland, Manipur, Mizoram & Tripura: Imphal (tulihal) AP (dist Imphal East) 3; East Madhya Pradesh: Jabalpur (dist Jabalpur) 2; **Odisha**: Paradip Port (dist Jagatsinghapur) 2; **Chhattisgarh**: Raipur-lalpur (dist Raipur) 2; Jammu & Kashmir and Ladakh: Kukernag (dist Anantnag) 2.

❖ **Heavy Rainfall observed** (from 0830 hours IST of yesterday to 0530 hours IST of today): **Heavy to very heavy rain** at most places over Arunachal Pradesh **Heavy rain** at isolated places over Assam & Meghalaya

❖ **Minimum Temperature Departures (as on 16-09-2025): markedly above normal(> 5.1°C)** at isolated places over Assam & Meghalaya, Bihar, East Uttar Pradesh, West Uttar Pradesh, Himachal Pradesh, Jammu-KashmirLadakh-Gilgit-Baltistan-Muzaffarabad and West Madhya Pradesh. **appreciably above normal(3.1°C to 5.0°C)** at many places over East Madhya Pradesh; at isolated places over Sub Himalayan West Bengal & Sikkim, Gujarat Region, Saurashtra & Kutch, Rayalaseema and Tamil Nadu, Puducherry & Karaikal. **above normal(1.6°C to 3.0°C)** at few places over Uttarakhand, East Rajasthan and Madhya Maharashtra; at isolated places over Nagaland, Manipur, Mizoram & Tripura, Gangetic West Bengal, Odisha, Haryana-Chandigarh-Delhi, Punjab, West Rajasthan, Marathwada, Vidarbha, Chhattisgarh, Coastal Andhra Pradesh & Yanam, North Interior Karnataka, South Interior Karnataka and Kerala & Mahe. **near normal(-1.5°C to 1.5°C)** at most places over Andaman & Nicobar Islands, Jharkhand, Konkan & Goa, Telangana, Coastal Karnataka and Lakshadweep; at few places over Arunachal Pradesh. **The lowest minimum temperature** of 17.5°C is reported at HALFLONG (ASSAM) over the Plains of India.

❖ **Maximum Temperature Departures (as on 16-09-2025): markedly above normal(> 5.1°C)** at isolated places over Jammu-KashmirLadakh-Gilgit-Baltistan-Muzaffarabad. **appreciably above normal(3.1°C to 5.0°C)** at isolated places over Kerala & Mahe. **above normal(1.6°C to 3.0°C)** at few places over Haryana-Chandigarh-Delhi; at isolated places over Punjab, Himachal Pradesh, East Rajasthan, West Madhya Pradesh, Chhattisgarh, Coastal Andhra Pradesh & Yanam, Rayalaseema and Tamil Nadu, Puducherry & Karaikal. **near normal(-1.5°C to 1.5°C)** at many places over Andaman & Nicobar Islands, Odisha, West Rajasthan, Gujarat Region, Marathwada and Coastal Karnataka; at most places over Nagaland, Manipur, Mizoram & Tripura, West Uttar Pradesh, Saurashtra & Kutch, South Interior Karnataka and Lakshadweep; at few places over Assam & Meghalaya, Gangetic West Bengal, Jharkhand, East Uttar Pradesh, Uttarakhand, East Madhya Pradesh, Vidarbha and Telangana; at isolated places over Sub Himalayan West Bengal & Sikkim, Bihar, Konkan & Goa and North Interior Karnataka. **The highest maximum temperature** of 37.9°C is reported at PALAYAMKOTTAI (TAMIL NADU).

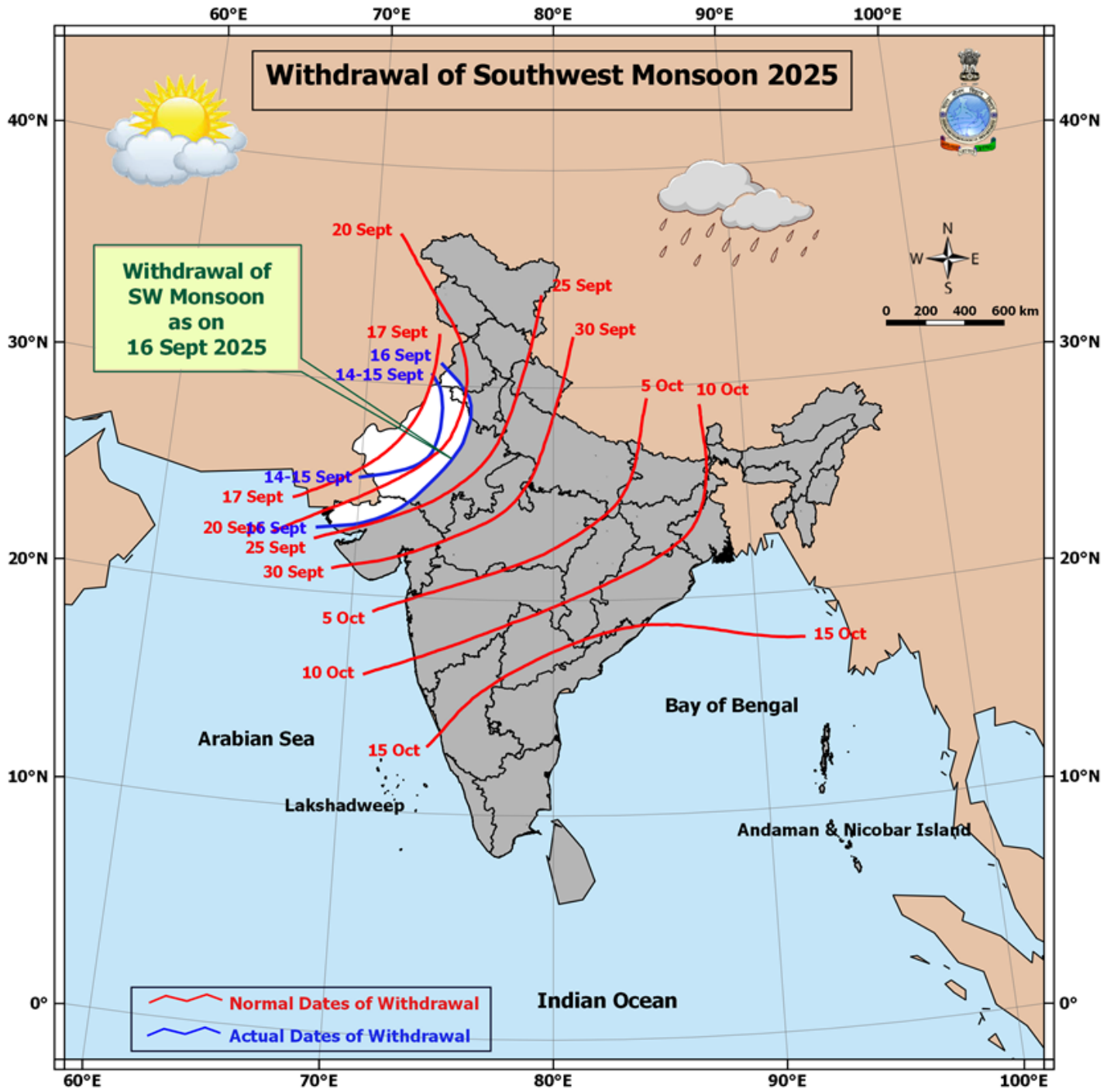


Meteorological Analysis (Based on 0530 hours IST)

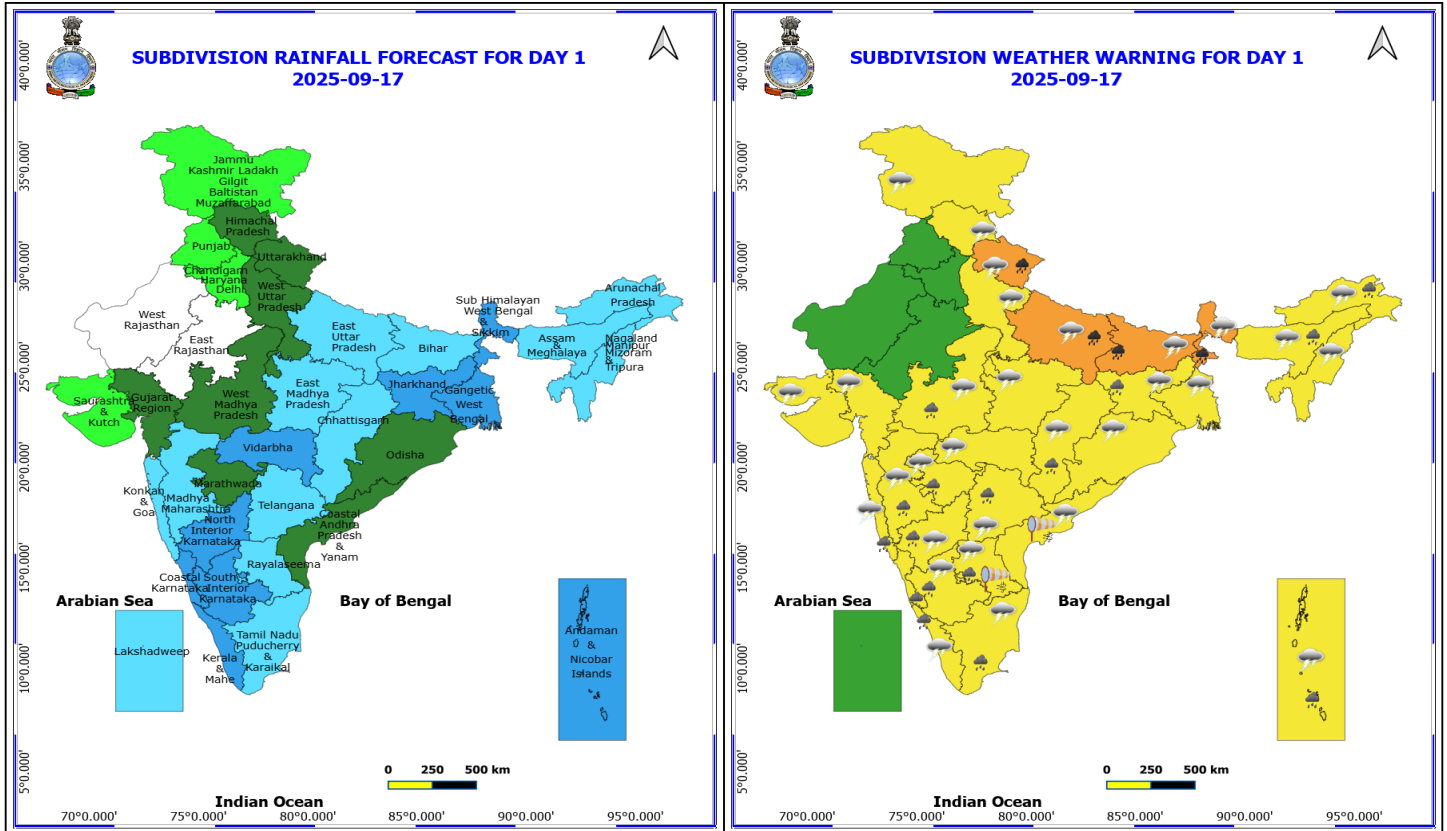
- The **line of withdrawal of southwest monsoon** continues to pass through 31°N/74°E, Bhatinda, Fatehabad, Pilani, Ajmer, Deesa, Bhuj and 23°N/68°E.
- The **upper air cyclonic circulation** over northcentral Uttar Pradesh & neighbourhood now lies over east Uttar Pradesh and adjoining Bihar and extends upto 1.5 km above mean sea level.
- The **upper air cyclonic circulation** over east Jharkhand & neighbourhood now lies over north Jharkhand at 3.1 km above mean sea level.
- The **upper air cyclonic circulation** over east Vidarbha & neighbourhood now lies over southwest Vidarbha & neighbourhood between 3.1 & 5.8 km above mean sea level tilting southwestwards with height.
- The **north-south trough** from South interior Karnataka to Comorin area across Tamilnadu at 0.9 km above mean sea level persists.
- The upper **air cyclonic circulation** over north east Assam and neighbourhood at 0.9 km above mean sea level persists.
- The **upper air cyclonic circulation** over southeast Bay of Bengal & neighbourhood extending upto 5.8 km above mean sea level tilting southwards with height persists.
- The **trough** from east Jharkhand to east Bangladesh between 1.5 & 3.1 km above mean sea level has become less marked.

Weather Outlook for subsequent 3 days

Scattered to fairly widespread rainfall likely over Western India.
Isolated to scattered rainfall likely over the rest parts of the country.



*Red color warning does not mean "Red Alert" Red color warning means "Take Action"
Forecast and warning for any day is valid from 0830 hours IST of day till 0830 hours IST of next day
For more details kindly visit <https://mausam.imd.gov.in> or contact 011-2434-4599
(Service to the nation since 1875)



17 September (Day 1)

- ❖ **Heavy to Very Heavy Rainfall** very likely at isolated places over Bihar, East Uttar Pradesh, Sub Himalayan West Bengal & Sikkim and Uttarakhand.
- ❖ **Heavy Rainfall** very likely at isolated places over Andaman & Nicobar Islands, Arunachal Pradesh, Assam & Meghalaya, Chhattisgarh, Jharkhand, Karnataka, Kerala & Mahe, Konkan & Goa, Madhya Maharashtra, Marathwada, Rayalaseema, Tamil Nadu Puducherry & Karaikal, Telangana and West Madhya Pradesh.
- ❖ **Thunderstorm accompanied with lightning & gusty winds(40-50kmph)** very likely at isolated places over Andaman & Nicobar Islands.
- ❖ **Thunderstorm accompanied with lightning & gusty winds(30-40kmph)** very likely at isolated places over Andhra Pradesh, Jammu-Kashmir-Ladakh-Gilgit-Baltistan-Muzaffarabad, Jharkhand, Tamil Nadu Puducherry & Karaikal and Telangana.
- ❖ **Thunderstorm accompanied with Lightning** very likely at isolated places over Arunachal Pradesh, Assam & Meghalaya, Bihar, Chhattisgarh, Gujarat State, Himachal Pradesh, Interior Karnataka, Kerala & Mahe, Konkan & Goa, Madhya Pradesh, Maharashtra, Nagaland, Manipur, Mizoram and Tripura, Odisha, Uttar Pradesh, Uttarakhand and West Bengal & Sikkim.
- ❖ **Strong Surface Winds** very likely at isolated places over Andhra Pradesh.

Squally wind with speed reaching 45 kmph to 55 kmph gusting to 65 kmph is likely to prevail over some parts of southwest & westcentral Arabian Sea, along and off Somalia, south Oman & adjoining Yemen coasts.

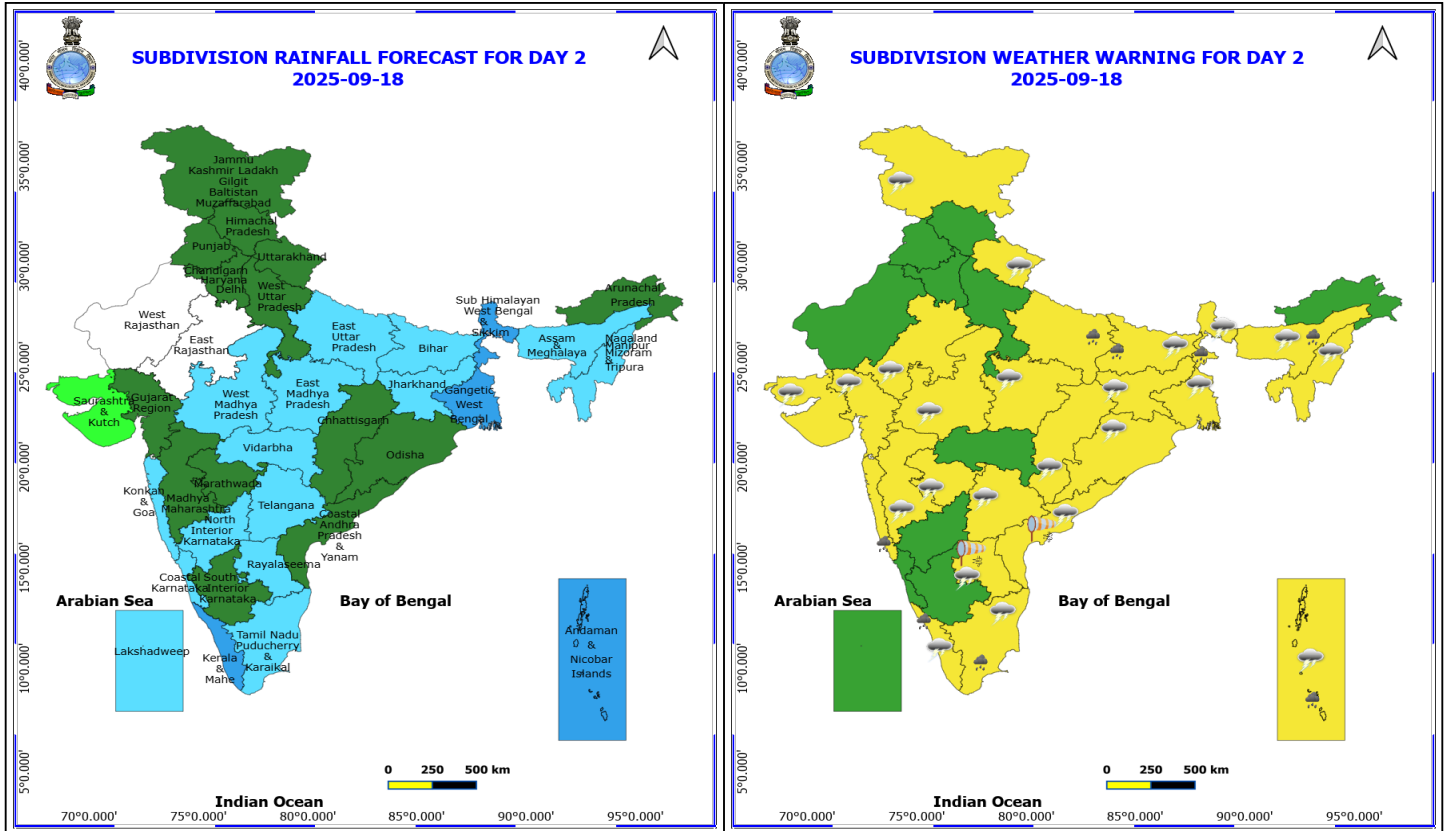
Squally weather with wind speed reaching 40 - 50 kmph gusting to 60 kmph likely to prevail along and off south Konkan, Goa coasts, over Gulf of Mannar & adjoining Comorin area and over few parts of southwest Bay of Bengal &

***Red color warning does not mean "Red Alert" Red color warning means "Take Action"**
Forecast and warning for any day is valid from 0830 hours IST of day till 0830 hours IST of next day
For more details kindly visit <https://mausam.imd.gov.in> or contact 011-2434-4599

(Service to the nation since 1875)



along and off south Sri Lanka coast, and over Andaman Sea.



18 September (Day 2)

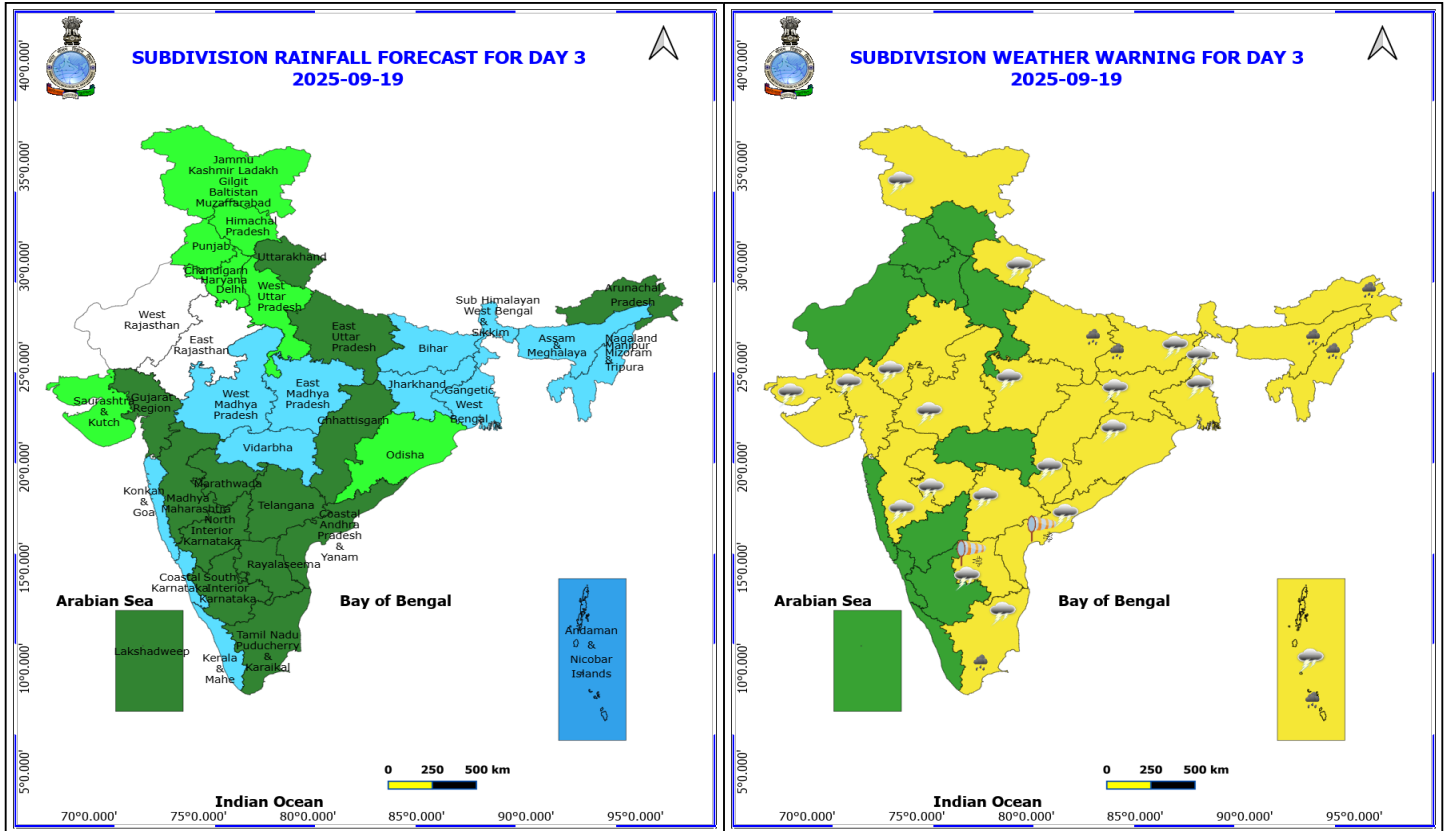
- ❖ **Heavy Rainfall** very likely at isolated places over Andaman & Nicobar Islands, Assam & Meghalaya, Bihar, East Uttar Pradesh, Kerala & Mahe, Konkan & Goa, Sub Himalayan West Bengal & Sikkim and Tamil Nadu Puducherry & Karaikal.
- ❖ **Thunderstorm accompanied with lightning & gusty winds(40-50kmph)** very likely at isolated places over Andaman & Nicobar Islands.
- ❖ **Thunderstorm accompanied with lightning & gusty winds(30-40kmph)** very likely at isolated places over Andhra Pradesh, Jammu-Kashmir-Ladakh-Gilgit-Baltistan-Muzaffarabad, Jharkhand, Tamil Nadu Puducherry & Karaikal and Telangana.
- ❖ **Thunderstorm accompanied with Lightning** very likely at isolated places over Assam & Meghalaya, Bihar, Chhattisgarh, East Rajasthan, Gujarat State, Kerala & Mahe, Madhya Maharashtra, Madhya Pradesh, Marathwada, Nagaland, Manipur, Mizoram and Tripura, Odisha, Uttarakhand and West Bengal & Sikkim.
- ❖ **Strong Surface Winds** very likely at isolated places over Andhra Pradesh.

Squally wind with speed reaching 45 kmph to 55 kmph gusting to 65 kmph is likely to prevail over some parts of southwest & few parts of westcentral Arabian Sea, along and off Somalia coast.

Squally weather with wind speed reaching 40 - 50 kmph gusting to 60 kmph likely to prevail along and off north Oman coast & adjoining sea area, over Gulf of Mannar & adjoining Comorin area and over some parts of southwest & adjoining southeast Bay of Bengal, along and off south Sri Lanka coast and over Andaman Sea.

***Red color warning does not mean "Red Alert" Red color warning means "Take Action"**
Forecast and warning for any day is valid from 0830 hours IST of day till 0830 hours IST of next day
For more details kindly visit <https://mausam.imd.gov.in> or contact 011-2434-4599

(Service to the nation since 1875)



19 September (Day 3)

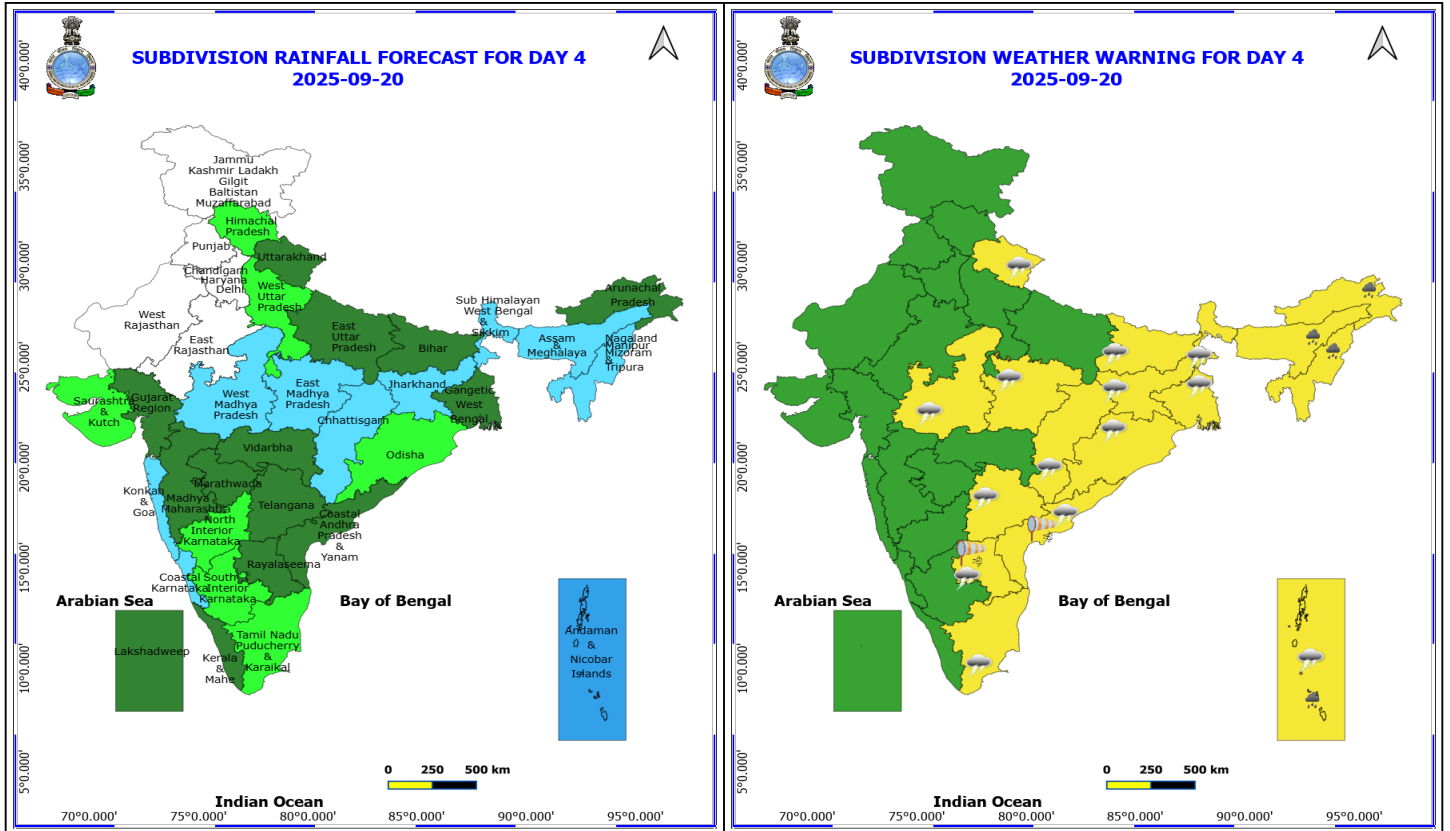
- ❖ **Heavy Rainfall** very likely at isolated places over Andaman & Nicobar Islands, Arunachal Pradesh, Assam & Meghalaya, Bihar, East Uttar Pradesh, Nagaland, Manipur, Mizoram and Tripura and Tamil Nadu Puducherry & Karaikal.
- ❖ **Thunderstorm accompanied with lightning & gusty winds(40-50kmph)** very likely at isolated places over Andaman & Nicobar Islands.
- ❖ **Thunderstorm accompanied with lightning & gusty winds(30-40kmph)** very likely at isolated places over Andhra Pradesh, Jammu-Kashmir-Ladakh-Gilgit-Baltistan-Muzaffarabad, Jharkhand, Tamil Nadu Puducherry & Karaikal and Telangana.
- ❖ **Thunderstorm accompanied with Lightning** very likely at isolated places over Bihar, Chhattisgarh, East Rajasthan, Gujarat State, Madhya Maharashtra, Madhya Pradesh, Marathwada, Odisha, Uttarakhand and West Bengal & Sikkim.
- ❖ **Strong Surface Winds** very likely at isolated places over Andhra Pradesh.

Squally wind with speed reaching 45 kmph to 55 kmph gusting to 65 kmph is likely to prevail over some parts of southwest & few parts of westcentral Arabian Sea, along and off Somalia coast.

Squally weather with wind speed reaching 40 - 50 kmph gusting to 60 kmph likely to prevail along and off north Oman coast & adjoining sea area, over Gulf of Mannar & adjoining Comorin area and over many parts of south Bay of Bengal & adjoining few parts of westcentral Bay of Bengal, along and off south Sri Lanka coast and over Andaman Sea.

***Red color warning does not mean "Red Alert" Red color warning means "Take Action"**
Forecast and warning for any day is valid from 0830 hours IST of day till 0830 hours IST of next day
For more details kindly visit <https://mausam.imd.gov.in> or contact 011-2434-4599

(Service to the nation since 1875)

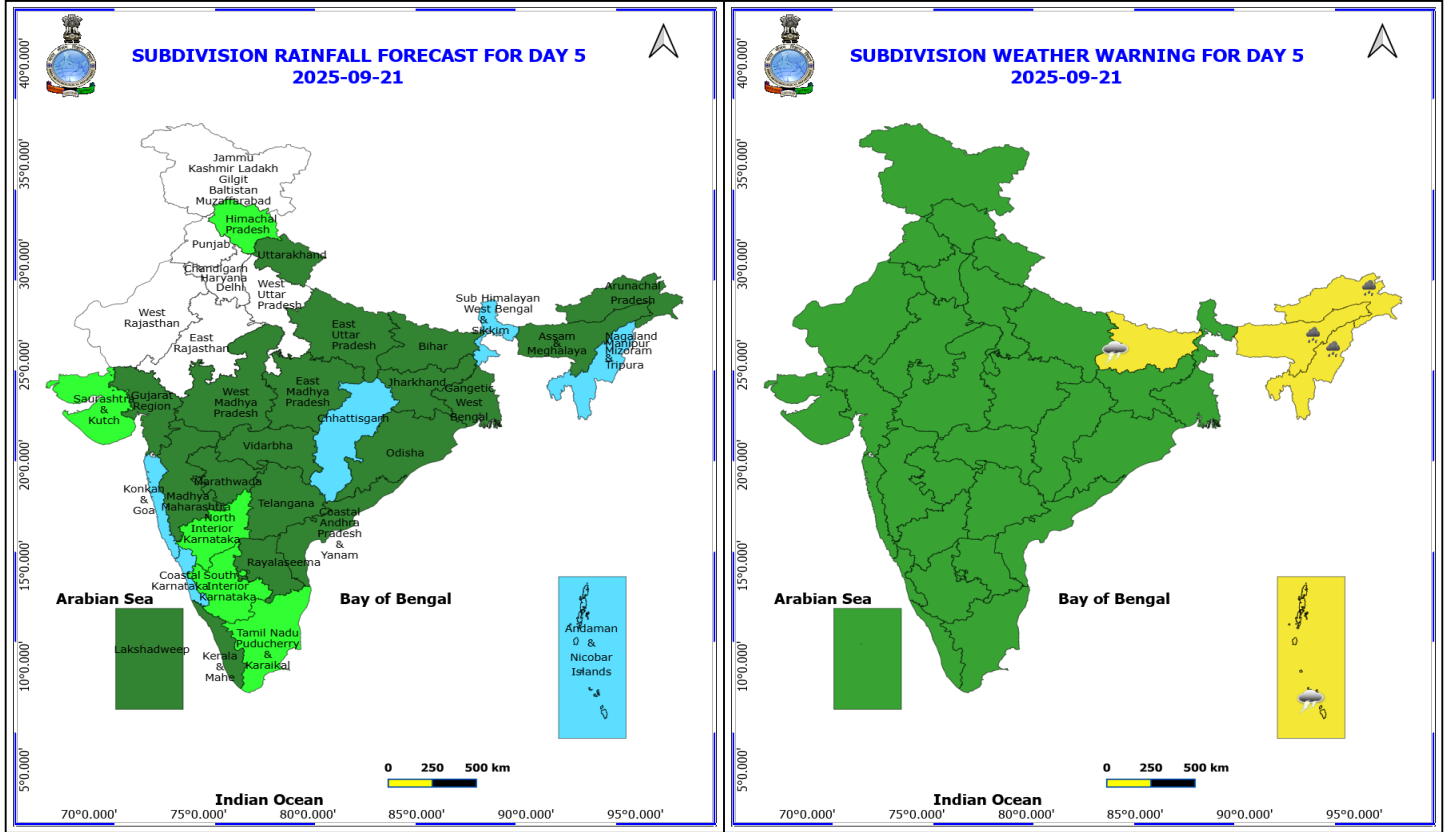


20 September (Day 4)

- ❖ **Heavy Rainfall** likely at isolated places over Andaman & Nicobar Islands, Arunachal Pradesh, Assam & Meghalaya and Nagaland, Manipur, Mizoram and Tripura.
- ❖ **Thunderstorm accompanied with lightning & gusty winds(40-50kmph)** likely at isolated places over Andaman & Nicobar Islands.
- ❖ **Thunderstorm accompanied with lightning & gusty winds(30-40kmph)** likely at isolated places over Andhra Pradesh, Jharkhand, Tamil Nadu Puducherry & Karaikal and Telangana.
- ❖ **Thunderstorm accompanied with Lightning** likely at isolated places over Bihar, Chhattisgarh, Madhya Pradesh, Odisha, Uttarakhand and West Bengal & Sikkim.
- ❖ **Strong Surface Winds** likely at isolated places over Andhra Pradesh.

Squally wind with speed reaching 45 kmph to 55 kmph gusting to 65 kmph is likely to prevail over some parts of southwest & few parts of westcentral Arabian Sea, along and off Somalia coast.

Squally weather with wind speed reaching 40 - 50 kmph gusting to 60 kmph likely to prevail along and off Oman coast & adjoining sea area, over Gulf of Mannar & adjoining Comorin area, over many parts of south Bay of Bengal, along and off south Sri Lanka coast and over Andaman Sea.



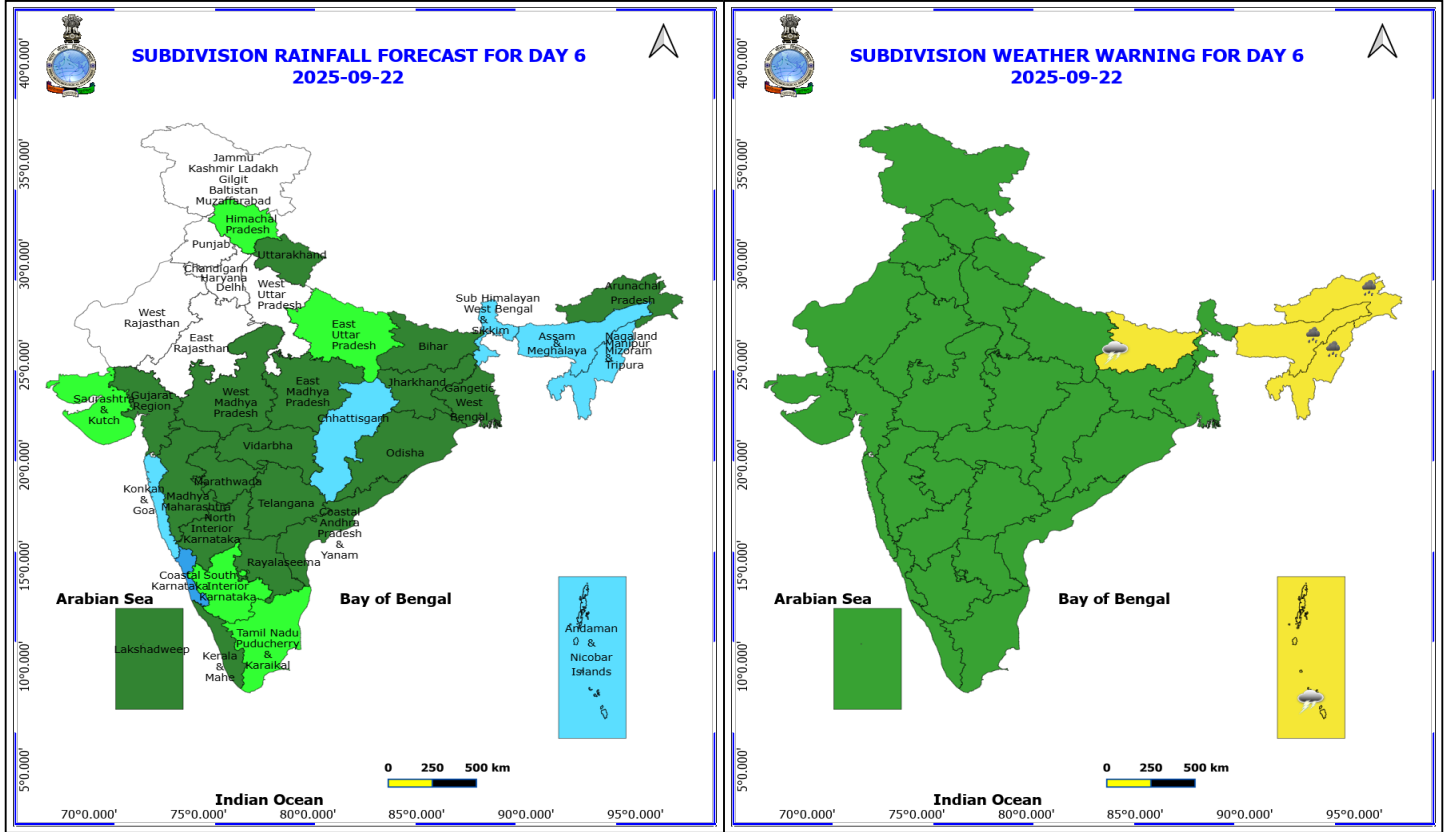
21 September (Day 5)

- ❖ **Heavy Rainfall** likely at isolated places over Arunachal Pradesh, Assam & Meghalaya and Nagaland, Manipur, Mizoram and Tripura.
- ❖ **Thunderstorm accompanied with lightning & gusty winds(30-40kmph)** likely at isolated places over Andaman & Nicobar Islands.
- ❖ **Thunderstorm accompanied with Lightning** likely at isolated places over Bihar.

No Fishermen Warning

***Red color warning does not mean "Red Alert" Red color warning means "Take Action"**
Forecast and warning for any day is valid from 0830 hours IST of day till 0830 hours IST of next day
For more details kindly visit <https://mausam.imd.gov.in> or contact 011-2434-4599

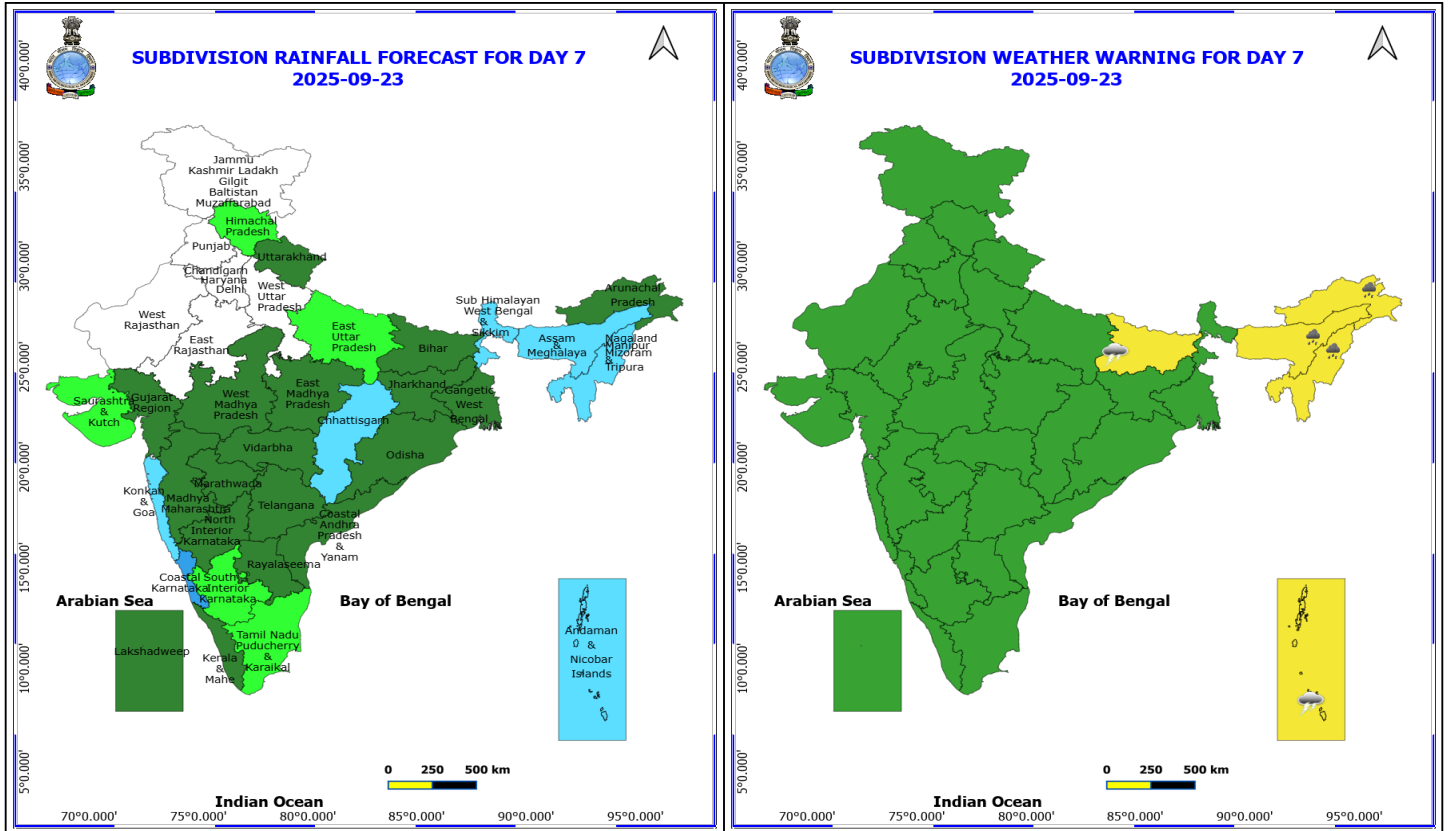
(Service to the nation since 1875)



22 September (Day 6)

- ❖ **Heavy Rainfall** likely at isolated places over Arunachal Pradesh, Assam & Meghalaya and Nagaland, Manipur, Mizoram and Tripura.
- ❖ **Thunderstorm accompanied with lightning & gusty winds(30-40kmph)** likely at isolated places over Andaman & Nicobar Islands.
- ❖ **Thunderstorm accompanied with Lightning** likely at isolated places over Bihar.

No Fishermen Warning



23 September (Day 7)

- ❖ **Heavy Rainfall** likely at isolated places over Arunachal Pradesh, Assam & Meghalaya and Nagaland, Manipur, Mizoram and Tripura.
- ❖ **Thunderstorm accompanied with lightning & gusty winds(30-40kmph)** likely at isolated places over Andaman & Nicobar Islands.
- ❖ **Thunderstorm accompanied with Lightning** likely at isolated places over Bihar.

No Fishermen Warning



Table-1

7 Days Rainfall Forecast

S.No.	Subdivision	17-Sep	18-Sep	19-Sep	20-Sep	21-Sep	22-Sep	23-Sep
		Day 1	Day 2	Day 3	Day 4	Day 5	Day 6	Day 7
1	ANDAMAN & NICOBAR ISLANDS	WS	WS	WS	WS	FWS	FWS	FWS
2	ARUNACHAL PRADESH	FWS	SCT	SCT	SCT	SCT	SCT	SCT
3	ASSAM & MEHGHALAYA	FWS	FWS	FWS	FWS	SCT	FWS	FWS
4	N. M. M. & T.	FWS	FWS	FWS	FWS	FWS	FWS	FWS
5	S.H. WEST BENGAL & SIKKIM	WS	WS	FWS	FWS	FWS	FWS	FWS
6	GANGETIC WEST BENGAL	WS	WS	FWS	SCT	SCT	SCT	SCT
7	ODISHA	SCT	SCT	ISOL	ISOL	SCT	SCT	SCT
8	JHARKHAND	WS	FWS	FWS	FWS	SCT	SCT	SCT
9	BIHAR	FWS	FWS	FWS	SCT	SCT	SCT	SCT
10	EAST UTTAR PRADESH	FWS	FWS	SCT	SCT	SCT	ISOL	ISOL
11	WEST UTTAR PRADESH	SCT	SCT	ISOL	ISOL	DRY	DRY	DRY
12	UTTARAKHAND	SCT	SCT	SCT	SCT	SCT	SCT	SCT
13	HARYANA, CHD & DELHI	ISOL	SCT	ISOL	DRY	DRY	DRY	DRY
14	PUNJAB	ISOL	SCT	ISOL	DRY	DRY	DRY	DRY
15	HIMACHAL PRADESH	SCT	SCT	ISOL	ISOL	ISOL	ISOL	ISOL
16	JAMMU AND KASHMIR AND LADAKH	ISOL	SCT	ISOL	DRY	DRY	DRY	DRY
17	WEST RAJASTHAN	DRY	DRY	DRY	DRY	DRY	DRY	DRY
18	EAST RAJASTHAN	DRY	DRY	DRY	DRY	DRY	DRY	DRY
19	WEST MADHYA PRADESH	SCT	FWS	FWS	FWS	SCT	SCT	SCT
20	EAST MADHYA PRADESH	FWS	FWS	FWS	FWS	SCT	SCT	SCT
21	GUJRAT REGION	SCT	SCT	SCT	SCT	SCT	SCT	SCT
22	SAURASHTRA & KUTCH	ISOL	ISOL	ISOL	ISOL	ISOL	ISOL	ISOL
23	KONKAN & GOA	FWS	FWS	FWS	FWS	FWS	FWS	FWS
24	MADHYA MAHARASHTRA	FWS	SCT	SCT	SCT	SCT	SCT	SCT
25	MARATHWADA	SCT	SCT	SCT	SCT	SCT	SCT	SCT
26	VIDARBHA	WS	FWS	FWS	SCT	SCT	SCT	SCT
27	CHATTISGARH	FWS	SCT	SCT	FWS	FWS	FWS	FWS
28	COASTAL ANDHRA PRADESH	SCT	SCT	SCT	SCT	SCT	SCT	SCT
29	TELANGANA	FWS	FWS	SCT	SCT	SCT	SCT	SCT
30	RAYALASEEMA	FWS	FWS	SCT	SCT	SCT	SCT	SCT
31	TAMILNADU & PUDUCHERRY	FWS	FWS	SCT	ISOL	ISOL	ISOL	ISOL
32	COSTAL KARNATAKA	WS	FWS	FWS	FWS	FWS	WS	WS
33	NORTH INTERIOR KARNATAKA	WS	FWS	SCT	ISOL	ISOL	SCT	SCT
34	SOUTH INTERIOR KARNATAKA	WS	SCT	SCT	ISOL	ISOL	ISOL	ISOL
35	KERALA	WS	WS	FWS	SCT	SCT	SCT	SCT
36	LAKSHDWEEP	FWS	FWS	SCT	SCT	SCT	SCT	SCT

Legend	Category	%Stations
WS	Widespread/Most Places	76-100
FWS	Fairly Widespread/Many Places	51-75
SCT	Scattered/ A Few Places	26-50
ISOL	Isolated Places	1-25
DRY	No Rain	0

*Red color warning does not mean "Red Alert" Red color warning means "Take Action"
Forecast and warning for any day is valid from 0830 hours IST of day till 0830 hours IST of next day
For more details kindly visit <https://mausam.imd.gov.in> or contact 011-2434-4599

(Service to the nation since 1875)

Fig. 1: Maximum Temperatures Dated 2025-09-17

Fig. 2: Departure of Maximum Temp. Dated 2025-09-17

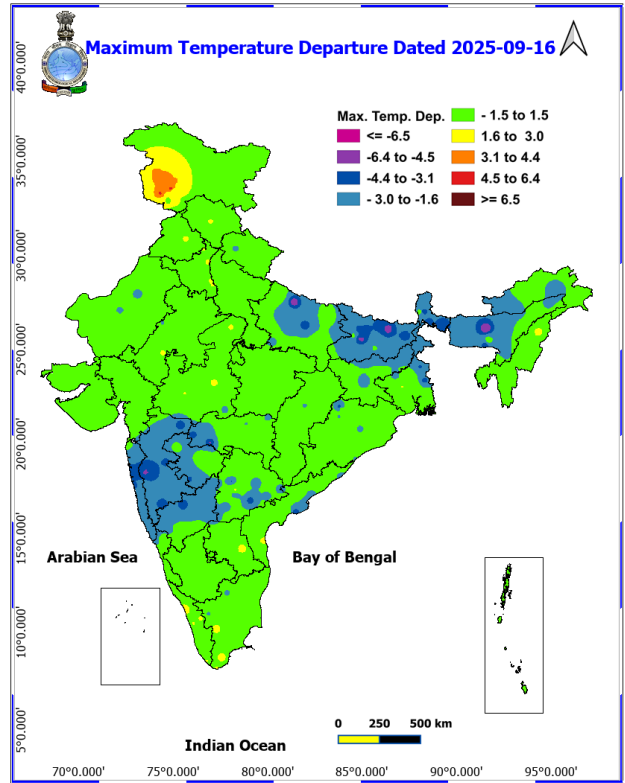
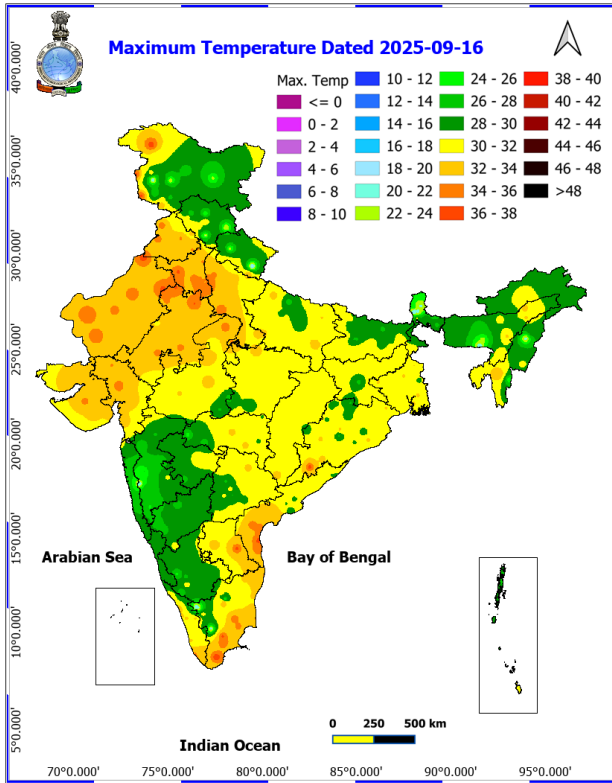
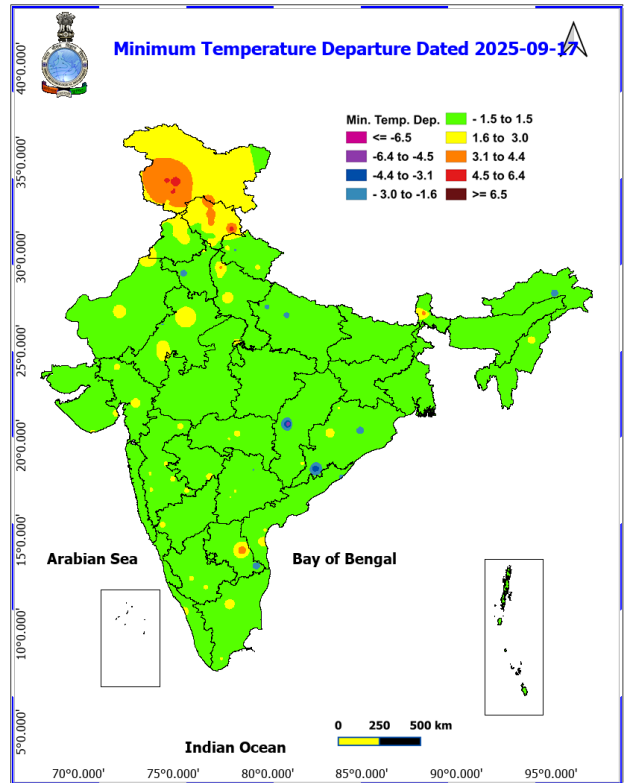
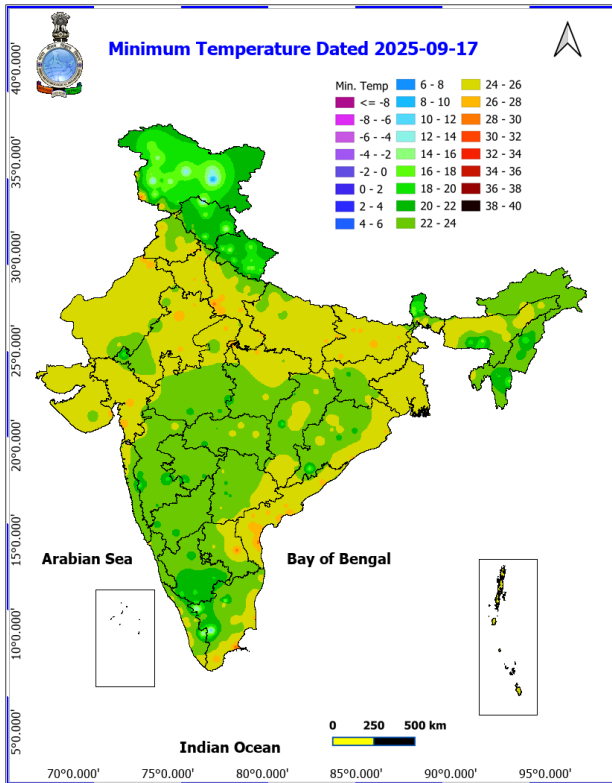
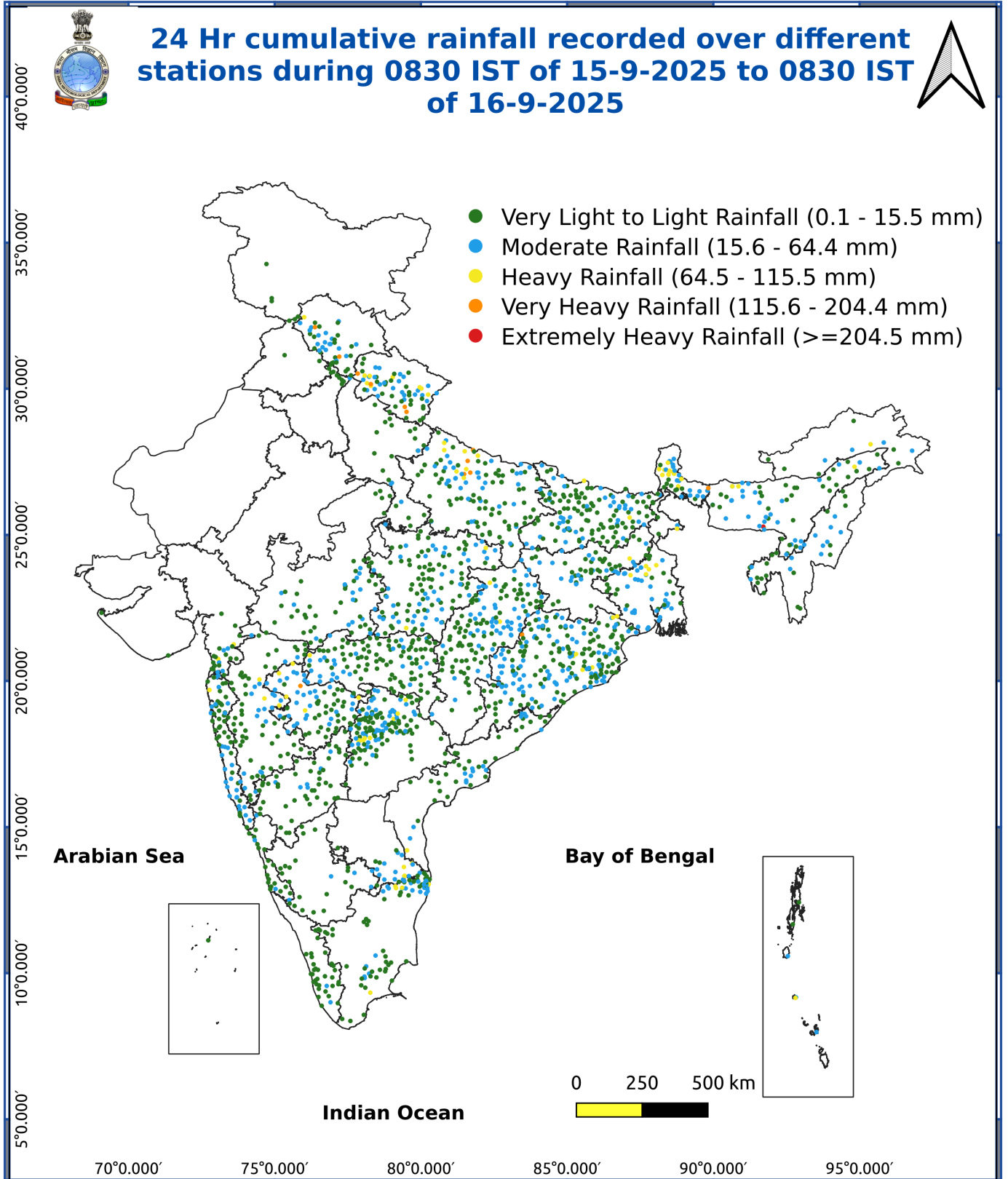


Fig. 3: Minimum Temperatures Dated 2025-09-17

Fig. 4: Departure of Minimum Temp. Dated 2025-09-17





Impact & Action Suggested due to

Heavy to very heavy rainfall (12-20 cm) at isolated places over Uttarakhand, East Uttar Pradesh, Bihar, Sub-Himalayan West Bengal & Sikkim on 17th September.

Impact Expected

- Localized Flooding of roads, water logging in low lying areas and closure of underpasses mainly in urban areas of the above region.
- Occasional reduction in visibility due to heavy rainfall.
- Disruption of traffic in major cities due to water logging in roads leading to increased travel time.
- Minor damage to kutcha roads.
- Possibilities of damage to vulnerable structure.
- Localized Landslides/Mudslides/landslips/mudslips/landsinks/mudsinks.
- Damage to horticulture and standing crops in some areas due to inundation.
- It may lead to riverine flooding in some river catchments (for riverine flooding please visit Web page of CWC)

Action Suggested

- Check for traffic congestion on your route before leaving for your destination.
- Follow any traffic advisories that are issued in this regard.
- Avoid going to areas that face the water logging problems often.
- Avoid staying in vulnerable structure.

Agromet advisories for various parts of the country

Agromet advisories for likely impact of Heavy / Heavy to Very Heavy Rainfall

- In **Maharashtra**, drain out excess water from fields of vegetables and fruit orchards in **Konkan**; rice, sugarcane, pigeon pea, soybean, maize, vegetables and fruit orchards in **Madhya Maharashtra**; sugarcane, sorghum, soybean, turmeric, vegetables and fruit orchards in **Marathwada** and pigeon pea, cotton, soybean, maize, vegetables and fruit orchards in **Vidarbha**.
- In **Arunachal Pradesh**, maintain proper drainage in standing crops such as rice, soybean, finger millet, vegetables and fruit orchards to avoid water stagnation. Avoid fresh sowing of French bean during heavy rainfall and ensure proper drainage in already sown crop.
- In **Assam**, ensure proper drainage in fields of rice, sugarcane, black gram and sesame in **Hill Zone**. In **Lower Brahmaputra Valley Zone**, ensure proper drainage system in *Sali* rice fields and nursery bed of vegetables. Cover the nursery bed with thin polythene to avoid the damages due to heavy rainfall. In **Upper Brahmaputra Valley Zone**, harvest the matured vegetables and fruits and transfer it to a safer location and make arrangements to drain out excess water from the standing crop fields. In **North Bank Plain Zone**, ensure proper drainage in rice, sesame and vegetables and keep the harvested produce of jute at safer place.
- In **Meghalaya**, drain out excess water from ginger and vegetable fields and fruit orchards. Provide support to tall and fragile crops like banana, papaya, pumpkin, etc. to prevent lodging.
- In **Sub-Himalayan West Bengal**, drain out excess water from *aman* paddy and vegetable fields such as chilli, bitter gourd, pointed gourd, okra, brinjal etc. in **Terai Zone** and black gram, finger millet, ginger, dalley khorsani, vegetables and fruit orchards in **Hill Zone**.
- In **Jharkhand**, keep the harvested produce of green gram in safer places. Make necessary arrangements to drain out excess water from already sown cabbage, cauliflower, radish and early potato in **Western Plateau Zone**.
- In **Bihar**, ensure proper drainage of excess rainwater from standing crops such as maize, finger millet and vegetables in **North East Alluvial Zone**.
- In **Odisha**, drain out excess rain water from fields of rice, maize, black gram and vegetables in **North Central Plateau Zone**.

*Red color warning does not mean "Red Alert" Red color warning means "Take Action"

Forecast and warning for any day is valid from 0830 hours IST of day till 0830 hours IST of next day

For more details kindly visit <https://mausam.imd.gov.in> or contact 011-2434-4599

(Service to the nation since 1875)

- In **Uttarakhand**, ensure proper drainage in the fields of green gram, black gram, soybean, barnyard millet and finger millet in **Sub Humid Sub Tropic Zone**. In **Bhabar and Tarai Zone**, maintain proper drainage in fields of rice, pigeon pea, black gram, green gram, finger millet, maize and soybean. Avoid sowing of potato and radish under heavy rainfall conditions and ensure proper drainage in already sown crop. In **Hill Zone**, undertake harvesting of matured crops of barnyard millet, ginger and rainfed rice and keep the harvested produce in safe place. Ensure proper drainage in pigeon pea and vegetable crops.
- In **Himachal Pradesh**, drain out excess water from the fields of rice, maize and vegetables in **Sub-Montane & Low Hills Sub-Tropical Zone** and vegetable fields and fruit orchards in **High Hills Sub Temperate Wet Zone** and **Mid Hills Sub Humid Zone**. Keep the harvested produce in safer places.
- In **Uttar Pradesh**, drain out excess rain water from the fields of rice, green gram, black gram, pigeon pea and vegetables in **Bundelkhand Zone**.
- In **Telangana**, ensure adequate drainage facilities to drain out excess rain water in fields of rice, maize, cotton, soybean, pigeon pea, turmeric and vegetables.

Livestock / Fishery

- Keep the animals inside the shed during heavy rainfall and provide them balanced feed.
- Store feed and fodder in a safe place to prevent spoilage.
- Construct an outlet with proper netting around the ponds to drain out excess water, thereby preventing fish from escaping in case of overflow.

Agromet advisories for likely impact of Thunderstorm / Gusty Winds / Squally Winds

Provide mechanical support to horticultural crops and staking or support to vegetables and young fruit plants / fruit-bearing plants to avoid lodging due to strong winds.

Legends & abbreviations:

Region wise classification of meteorological Sub-Divisions:

Northwest India: Western Himalayan Region (Jammu-Kashmir-Ladakh-Gilgit-Baltistan-Muzaffarabad, Himachal Pradesh and Uttarakhand); Punjab, Haryana-Chandigarh-Delhi; West Uttar Pradesh, East Uttar Pradesh, West Rajasthan and East Rajasthan.

Central India: West Madhya Pradesh, East Madhya Pradesh, Vidarbha and Chhattisgarh.

East India: Bihar, Jharkhand, Sub-Himalayan West Bengal & Sikkim; Gangetic West Bengal, Odisha and Andaman & Nicobar Islands.

Northeast India: Arunachal Pradesh, Assam & Meghalaya and Nagaland, Manipur, Mizoram & Tripura.

West India: Gujarat Region, Saurashtra & Kutch, Konkan & Goa, Madhya Maharashtra and Marathwada.

South India: Coastal Andhra Pradesh & Yanam, Telangana, Rayalaseema, Coastal Karnataka, North Interior Karnataka, South Interior Karnataka, Kerala & Mahe, Tamil Nadu, Puducherry & Karaikal and Lakshadweep.

LEGENDS

- 1 अंडमान और निकोबार द्वीप समुह
- 2 अरुणाचल प्रदेश
- 3 असम और मेघालय
- 4 नागालैंड मनीपुर मीजोरम और त्रिपुरा
- 5 उप हिमालय पश्चिम बंगाल एवं सिक्किम
- 6 पश्चिम बंगाल
- 7 ओडिसा
- 8 झारखंड
- 9 बिहार
- 10 पूर्वी उत्तर प्रदेश
- 11 पश्चिम उत्तर प्रदेश
- 12 उत्तराखंड
- 13 हरियाणा चंडिगढ़ एवं दिल्ली
- 14 पंजाब
- 15 हिमाचल प्रदेश
- 16 जम्मू एवं कश्मीर एवं लद्दाख
- 17 पश्चिम राजस्थान
- 18 पूर्वी राजस्थान
- 19 पश्चिम मध्य प्रदेश
- 20 पूर्वी मध्य प्रदेश
- 21 गुजरात क्षेत्र
- 22 सौराष्ट्र एवं कच्छ
- 23 कोंकण एवं गोवा
- 24 मध्य महाराष्ट्र
- 25 मराठावाडा
- 26 विदर्भ
- 27 छत्तीसगढ़
- 28 तटीय आंध्र प्रदेश एवं यनम
- 29 तेलंगाना
- 30 रायलसीमा
- 31 तमिलनाडु, पुदुचेरी एवं कराईकल
- 32 तटिय कर्नाटक
- 33 आंतरिक उत्तरी कर्नाटक
- 34 आंतरिक दक्षिणी कर्नाटक
- 35 केरल एवं माहे
- 36 लक्षद्वीप



1. Andaman & Nicobar Islands
2. Arunachal Pradesh
3. Assam & Meghalaya
4. Nagaland, Manipur, Mizoram & Tripura
5. Sub-Himalayan West Bengal & Sikkim
6. Gangetic West Bengal
7. Orissa
8. Jharkhand
9. Bihar
10. East Uttar Pradesh
11. West Uttar Pradesh
12. Uttarakhand
13. Haryana, Chd & Delhi
14. Punjab
15. Himachal Pradesh
16. Jammu & Kashmir and Ladakh
17. West Rajasthan
18. East Rajasthan
19. West Madhya Pradesh
20. East Madhya Pradesh
21. Gujarat
22. Saurashtra
23. Konkan & Goa
24. Madhya Maharashtra
25. Marathawada
26. Vidharbha
27. Chhattisgarh
28. Coastal Andhra Pradesh & Yanam
29. Telangana
30. Rayalaseema
31. Tamilnadu, Puducherry & Karaikal
32. Coastal Karnataka
33. North Interior Karnataka
34. South Interior Karnataka
35. Kerala & Mahe
36. Lakshadweep

SPATIAL DISTRIBUTION (% of Stations reporting)

% Stations	Category	% Stations	Category
76-100	Widespread (WS/ Most Places)	26-50	Scattered (SCT/ A Few Places)
51-75	Fairly Widespread (FWS/ Many Places)	1-25	Isolated (ISOL)

Subdivision Colour

- NO WARNING
- WATCH (BE UPDATED)
- ALERT (BE PREPARED TO TAKE ACTION)
- WARNING (TAKE ACTION)

Probabilistic Forecast

Terms	Probability of Occurrence (%)
Unlikely	< 25
Likely	25 - 50
Very Likely	50 - 75
Most Likely	> 75

- | | | | |
|--------------------------|-----------------|----------------------|--------------------|
| Heavy Rain | Very Heavy Rain | Extremely Heavy Rain | Heavy Snow |
| Thunderstorm & Lightning | Hailstorm | Dust Storm | Dust Raising Winds |
| Strong surface winds | Heat Wave | Hot Day | Warm Night |
| Cold Wave | Cold Day | Ground Frost | Fog |
| Hot & Humid | | | |

*Red color warning does not mean "Red Alert" Red color warning means "Take Action"

Forecast and warning for any day is valid from 0830 hours IST of day till 0830 hours IST of next day

For more details kindly visit <https://mausam.imd.gov.in> or contact 011-2434-4599

(Service to the nation since 1875)

LEGENDS

WARNING

WARNING (TAKE ACTION)
ALERT (BE PREPARED)
WATCH (BE UPDATED)
NO WARNING (NO ACTION)

Probabilistic Forecast

Terms	Probability of Occurrence (%)
Unlikely	< 25
Likely	25 - 50
Very Likely	50 - 75
Most Likely	> 75



Heavy: 64.5 to 115.5 mm/cm *
Very Heavy: 115.6 to 204.4 mm/cm*
Extremely Heavy: > 204.4 mm/cm *



When maximum temperature of a station reaches $\geq 40^{\circ}\text{C}$ for plains and $\geq 30^{\circ}\text{C}$ for hilly regions
(a) Based on Departure from normal

Heat Wave: Maximum Temperature Departure from normal 4.5°C to 6.4°C .
Severe Heat Wave: Maximum Temperature Departure from normal $\geq 6.5^{\circ}\text{C}$

(b). Based on Actual maximum temperature

Heat Wave: When actual maximum temperature $\geq 45^{\circ}\text{C}$.
Severe Heat Wave: When actual maximum temperature $\geq 47^{\circ}\text{C}$

(c). Criteria for heat wave for coastal stations

When maximum temperature departure is $> 4.5^{\circ}\text{C}$ from normal. Heat Wave may be described provided maximum temperature $\geq 37^{\circ}\text{C}$



When maximum temperature remains 40°C

Warm Night: When minimum temperature departure 4.5°C to 6.4°C .
Severe Warm Night: When minimum temperature departure $> 6.4^{\circ}\text{C}$.



When minimum temperature of a station $\leq 10^{\circ}\text{C}$ for plains and $\leq 0^{\circ}\text{C}$ for hilly regions.
(a). Based on departure

Cold Wave: Minimum Temperature Departure from normal -4.5°C to -6.4°C .
Severe Cold Wave: Minimum Temperature Departure from normal $\leq -6.5^{\circ}\text{C}$

(b) Based on actual Minimum Temperature (for Plains only)

Cold Wave : When Minimum Temperature is $\leq 4.0^{\circ}\text{C}$
Severe Cold Wave: When Minimum Temperature is $\leq 2.0^{\circ}\text{C}$

(c) For Coastal Stations

When Minimum Temperature departure is $\leq -4.5^{\circ}\text{C}$ & actual Minimum Temperature is $\leq 15^{\circ}\text{C}$



When minimum temperature of a station $\leq 10^{\circ}\text{C}$ for plains and $\leq 0^{\circ}\text{C}$ for hilly regions
Based on departure

Cold Day: Maximum Temperature Departure from normal -4.5°C to -6.4°C .
Severe Cold Day: Maximum Temperature Departure from normal $\leq -6.5^{\circ}\text{C}$



Phenomenon of small droplets suspended in air and the horizontal visibility $< 1\text{km}$

Moderate Fog: When the visibility between 500-200 metres
Dense Fog: when the visibility between 50- 200 metres
Very Dense Fog: when the visibility < 50 metres



Sudden electrical discharges manifested by a flash of light (Lightning) and a sharp rumbling sound (thunder)



An ensemble of particles of dust or sand energetically lifted to great heights by a strong and turbulent wind.



Ice deposits on ground

Air temperature $\leq 4^{\circ}\text{C}$ (over Plains)



A strong wind that rises suddenly, lasts for atleast 1 minute.

Moderate: Wind speed 52-61 kmph
Severe: Wind speed 62-87 kmph
Very Severe: Wind speed > 87 kmph



Effect of various waves in the sea over specific area

Rough to very rough: Wind speed 41-62 kmph (22-33 knots) & Wave height 2.5-6 metre
High to very high: Wind speed 63-117 kmph (34-63 knots) & Wave height 6-14 metre
Phenomenal: Wind speed > 117 kmph (> 63 knots) & Wave height > 14 metre



Cyclonic Storm: Wind speed 62-87 kmph (34-47 knots)
Severe Cyclonic Storm: Wind speed 88-117 kmph (48-63 knots)
Very Severe Cyclonic Storm: Wind speed 118-165 kmph (64 - 89 knots)
Extremely Severe Cyclonic Storm: Wind speed 166-220 kmph (90 -119 knots)
Super Cyclone Storm: Wind speed > 220 kmph (> 119 knots)

*Red color warning does not mean "Red Alert" Red color warning means "Take Action"

Forecast and warning for any day is valid from 0830 hours IST of day till 0830 hours IST of next day

For more details kindly visit <https://mausam.imd.gov.in> or contact 011-2434-4599

(Service to the nation since 1875)