

2026-03-25

Time of Issue: 07:59:00 hours IST  
(Morning)

## ALL INDIA WEATHER SUMMARY AND FORECAST BULLETIN

### Significant Weather Features

#### Weather Warning & Forecast:

##### Northwest India:

- **Isolated to scattered** light rainfall/snowfall with isolated thunderstorm, lightning & gusty winds speed reaching (30-50 kmph) likely over Jammu-Kashmir-Ladakh-Gilgit-Baltistan-Muzaffarabad, Himachal Pradesh on 26<sup>th</sup>; Uttarakhand on 27<sup>th</sup> March.
- **Isolated** light rainfall with thunderstorm, lightning & gusty winds speed reaching (30-40 kmph) likely over Punjab and Haryana, Chandigarh & Delhi on 26<sup>th</sup>; Uttar Pradesh on 27<sup>th</sup> March.
- Another fresh wet spell with **fairly widespread to widespread** light to moderate rainfall/snowfall with isolated thunderstorm, lightning & gusty winds speed reaching (30-50 kmph) likely over Jammu-Kashmir and Himachal Pradesh during 28<sup>th</sup>-30<sup>th</sup>; **isolated to scattered** light to moderate rainfall/snowfall over Uttarakhand on 29<sup>th</sup> & 30<sup>th</sup>; with **isolated to scattered** light to moderate rainfall likely with isolated thunderstorm, lightning & gusty winds speed reaching (30-40 kmph) over Punjab, Haryana, Chandigarh & Delhi on 29<sup>th</sup> & 30<sup>th</sup> and Rajasthan during 28<sup>th</sup>-30<sup>th</sup> March.

##### Northeast India:

- **Scattered to fairly widespread** light to moderate rainfall with **thunderstorm, lightning gusty winds speed reaching (30-50 kmph)** likely over Arunachal Pradesh, Assam & Meghalaya on 25<sup>th</sup>, 27<sup>th</sup> & 28<sup>th</sup>; Nagaland, Manipur, Mizoram & Tripura on 25<sup>th</sup> & 28<sup>th</sup> March.
- **Isolated heavy rainfall** likely over Assam & Meghalaya and Arunachal Pradesh on 27<sup>th</sup> & 28<sup>th</sup> and Nagaland on 28<sup>th</sup> March.

##### East India:

- **Isolated to Scattered** rainfall with **thunderstorm, lightning & gusty winds speed reaching (30-50 kmph)** likely over Sub-Himalayan West Bengal & Sikkim during 25<sup>th</sup> -29<sup>th</sup>; Bihar & Odisha on 27<sup>th</sup> & 28<sup>th</sup>; Gangetic West Bengal during 27<sup>th</sup>-29<sup>th</sup>; Jharkhand on 27<sup>th</sup> & 28<sup>th</sup> March.
- **Thundersquall (wind speed reaching 50-60 kmph gusting to 70 kmph) with Hailstorm** at isolated places likely over Sub-Himalayan West Bengal & Sikkim on 27<sup>th</sup> March.
- **Isolated heavy rainfall** likely over Sub-Himalayan West Bengal & Sikkim on 27<sup>th</sup> March.

##### Central India:

- **Isolated** light rainfall with **thunderstorm, lightning & gusty winds speed reaching (30-50 kmph)** likely over Vidarbha, Chhattisgarh on 26<sup>th</sup> & 27<sup>th</sup>; East Madhya Pradesh on 27<sup>th</sup> & 28<sup>th</sup> March.

##### West India:

- **Isolated** light rainfall with **thunderstorm & lightning** likely over Madhya Maharashtra during 25<sup>th</sup>- 26<sup>th</sup> and Marathwada on 25<sup>th</sup> March.

##### South Peninsular India:

- **Isolated** light rainfall with **thunderstorm, lightning & gusty winds speed reaching (30-40 kmph)** likely over Coastal Andhra Pradesh & Yanam, Rayalaseema, Telangana and Karnataka during next 5 days; with **lightning** over Kerala & Mahe on 27<sup>th</sup> & 28<sup>th</sup> March.

##### Hot & Humid weather Warnings:

\*Red color warning does not mean "Red Alert" Red color warning means "Take Action"

Forecast and warning for any day is valid from 0830 hours IST of day till 0830 hours IST of next day

For more details kindly visit <https://mausam.imd.gov.in> or contact 011-2434-4599

(Service to the nation since 1875)



- **Hot & humid conditions** very likely to prevail in isolated pockets over Kerala during 25<sup>th</sup>-26<sup>th</sup>; Coastal Maharashtra on 25<sup>th</sup> March.

**Forecast of maximum/day temperatures:**

- Gradual rise in maximum temperatures by 2-4°C likely over Northwest India during next 4 days and no significant change during subsequent 3 days.
- Gradual rise in maximum temperatures by 2-3°C likely over Central India during next 3 days and no significant change during subsequent 4 days.
- Gradual rise in maximum temperatures by 3-5°C likely over East India during next 4 days; gradual fall by 2-4°C during subsequent 3 days.
- Gradual rise in maximum temperatures by 2-3°C likely over West India during next 2 days and no significant change during subsequent 5 days.
- No significant change in maximum temperatures likely over rest parts of the country.

### Main Weather Observations:

❖ **Rainfall distribution** (from 0830 hours IST of yesterday to 0530 hours IST of today): **at most places** over Assam & Meghalaya, Arunachal Pradesh, Himachal Pradesh and North Interior Karnataka; **at many places** over Jharkhand, Sub-himalayan West Bengal & Sikkim, Nagaland, Manipur, Mizoram & Tripura, Telangana and Chhattisgarh; **Dry** over rest of the country.

❖ **Significant rainfall recorded(in cm)** (from 0830 hours IST of yesterday to 0530 hours IST of today): **Arunachal Pradesh:** Itanagar (dist Papum Pare) 3, Pasighat (dist East Siang) 1; **Assam & Meghalaya:** Barapani/shillong (dist East Khasi Hills) 3, Dibrugarh (dist Dibrugarh) 2, North Lakhimpur (dist Lakhimpur), Tezpur (dist Sonitpur), Dhubri (dist Dhubri), Cherrapunji (dist East Khasi Hills) 1 Each; **Nagaland, Manipur, Mizoram & Tripura:** Dimapur (dist Dimapur) 2, Kailashahar AP (dist Unakoti) 1; **North Interior Karnataka:** Gadag (dist Gadag), Kalaburgi (dist Kalaburagi) 1 Each; **Telangana:** Hyderabad (dist Hyderabad) 1.

❖ **Minimum Temperature Departures (as on 24-03-2026):** **markedly above normal(> 5.1°C)** at isolated places over Konkan & Goa and Madhya Maharashtra. **appreciably above normal(3.1°C to 5.0°C)** at few places over West Rajasthan; at isolated places over Andaman & Nicobar Islands, Bihar, West Uttar Pradesh, East Rajasthan and Gujarat Region. **above normal(1.6°C to 3.0°C)** at many places over Madhya Maharashtra; at few places over Bihar, Punjab, Saurashtra & Kutch, Konkan & Goa and Lakshadweep; at isolated places over Andaman & Nicobar Islands, East Uttar Pradesh, West Uttar Pradesh, Haryana-Chandigarh-Delhi, Himachal Pradesh, Jammu-KashmirLadakh-Gilgit-Baltistan-Muzaffarabad, West Rajasthan, East Rajasthan, East Madhya Pradesh, Gujarat Region, Tamil Nadu, Puducherry & Karaikal and North Interior Karnataka. **near normal(-1.5°C to 1.5°C)** at many places over Andaman & Nicobar Islands, Assam & Meghalaya, East Uttar Pradesh, West Uttar Pradesh, Uttarakhand, Punjab, Himachal Pradesh, Jammu-KashmirLadakh-Gilgit-Baltistan-Muzaffarabad, West Madhya Pradesh, East Madhya Pradesh, Gujarat Region, Saurashtra & Kutch, Konkan & Goa, Chhattisgarh, Telangana, Tamil Nadu, Puducherry & Karaikal, North Interior Karnataka and Lakshadweep; at most places over Arunachal Pradesh, Sub Himalayan West Bengal & Sikkim, Odisha, Jharkhand, Haryana-Chandigarh-Delhi, Marathwada, Coastal Andhra Pradesh & Yanam, Rayalaseema, Coastal Karnataka, South Interior Karnataka and Kerala & Mahe; at few places over Nagaland, Manipur, Mizoram & Tripura, Gangetic West Bengal, Bihar, West Rajasthan, East Rajasthan, Madhya Maharashtra and Vidarbha. **The lowest minimum temperature of 14.0 °C was observed at Najibabad (Uttar Pradesh) & Gurdaspur (Punjab)** over the Plains of India.

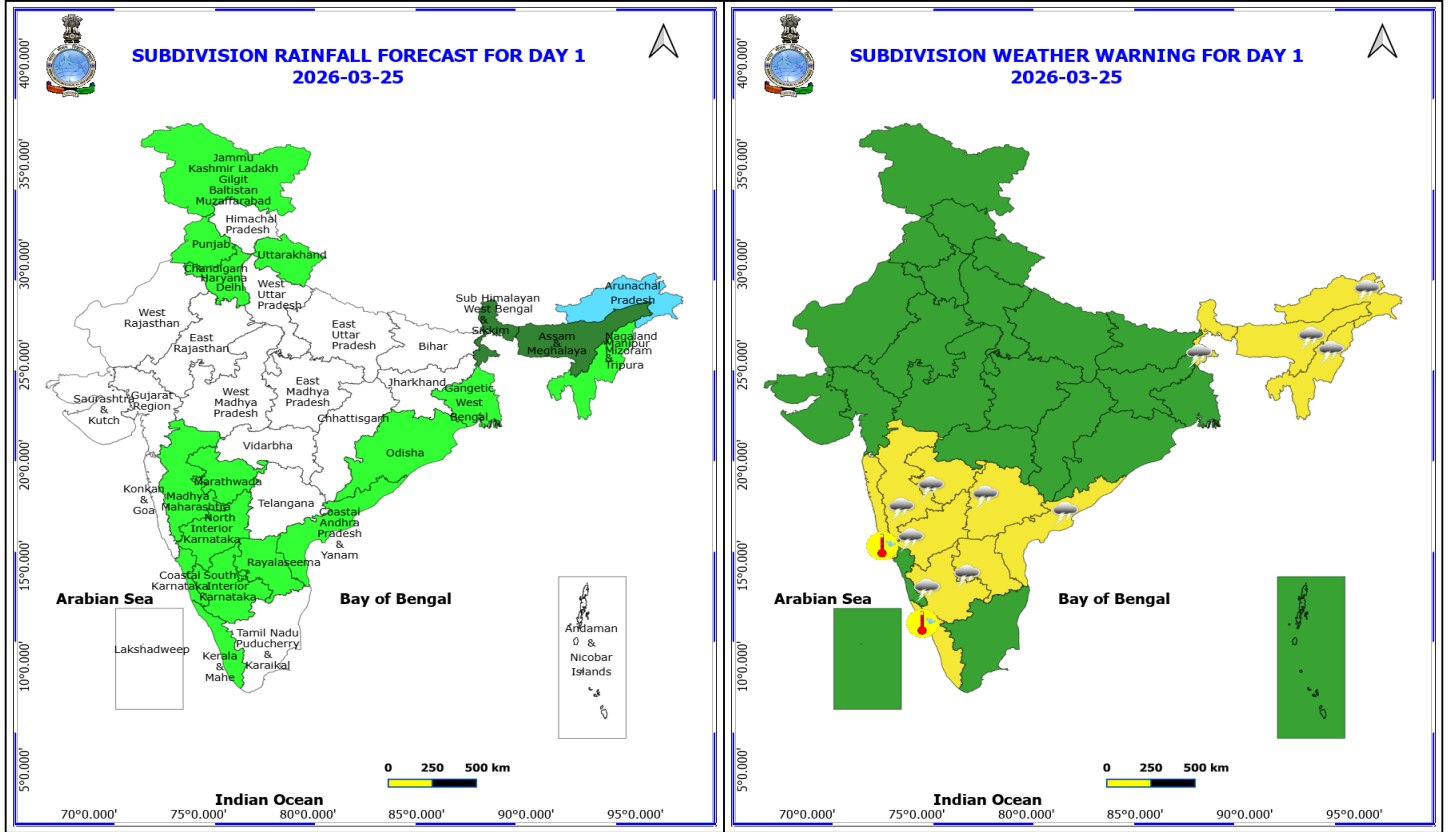
❖ **Maximum Temperature Departures (as on 24-03-2026):** **appreciably above normal(3.1°C to 5.0°C)** at few places over Jammu-KashmirLadakh-Gilgit-Baltistan-Muzaffarabad; at isolated places over West Rajasthan and Konkan & Goa. **above normal(1.6°C to 3.0°C)** at few places over Coastal Karnataka and Kerala & Mahe; at isolated places over Himachal Pradesh, Saurashtra & Kutch, Madhya Maharashtra, Vidarbha, Coastal Andhra Pradesh & Yanam and Tamil Nadu, Puducherry & Karaikal. **near normal(-1.5°C to 1.5°C)** at many places over East Uttar Pradesh, West Uttar Pradesh, East Rajasthan, East Madhya Pradesh and Gujarat Region; at most places over Andaman & Nicobar Islands, Odisha, Uttarakhand, Haryana-Chandigarh-Delhi, Punjab, West Madhya Pradesh, Marathwada, Chhattisgarh, South Interior Karnataka and Lakshadweep; at few places over Assam & Meghalaya, Gangetic West Bengal, Bihar, Telangana, Rayalaseema and North Interior Karnataka; at isolated places over Nagaland, Manipur, Mizoram & Tripura, Sub Himalayan West Bengal & Sikkim and Jharkhand. **The highest maximum temperature of 40.0°C was reported at AMRAVATI (MAHARASHTRA) & WARDHA (MAHARASHTRA).**

### Meteorological Analysis (Based on 0530 hours IST)

- The **upper air cyclonic circulation** over central Pakistan & neighbourhood at 1.5 km above mean sea level persists.
- The **upper air cyclonic circulation** over central parts of Madhya Pradesh at 0.9 km above mean sea level persists.
- The **trough** from above cyclonic circulation over central parts of Madhya Pradesh to north Madhya Maharashtra across Vidarbha and Marathwada at 0.9 km above mean sea level persists.
- The **trough** in lower level westerlies with its axis at 3.1 km above mean sea level now runs roughly along Long. 94°E to the north of Lat. 24°N.
- The **upper air cyclonic circulation** over central Assam & neighbourhood now lies over northeast Assam & neighbourhood and extends upto 1.5 km above mean sea level.
- The **upper air cyclonic circulation** over South Interior Karnataka & neighbourhood at 1.5 km above mean sea level persists.
- The **upper air cyclonic circulation** over Lakshadweep & neighbourhood at 0.9 km above mean sea level persists.
- **Subtropical westerly Jet Stream** with core winds of the order of 85 knots at 12.6 km above mean sea level prevails over northeast India.
- Two Western **Disturbances** in quick succession are likely to affect northwest India, first from 26<sup>th</sup> and second from night of 28<sup>th</sup> March 2026, respectively.
- The **trough/wind discontinuity** from Gulf of Mannar to North Interior Karnataka across Tamil Nadu and South Interior Karnataka at 0.9 km above mean sea level has become less marked.

### Weather Outlook for subsequent 3 days

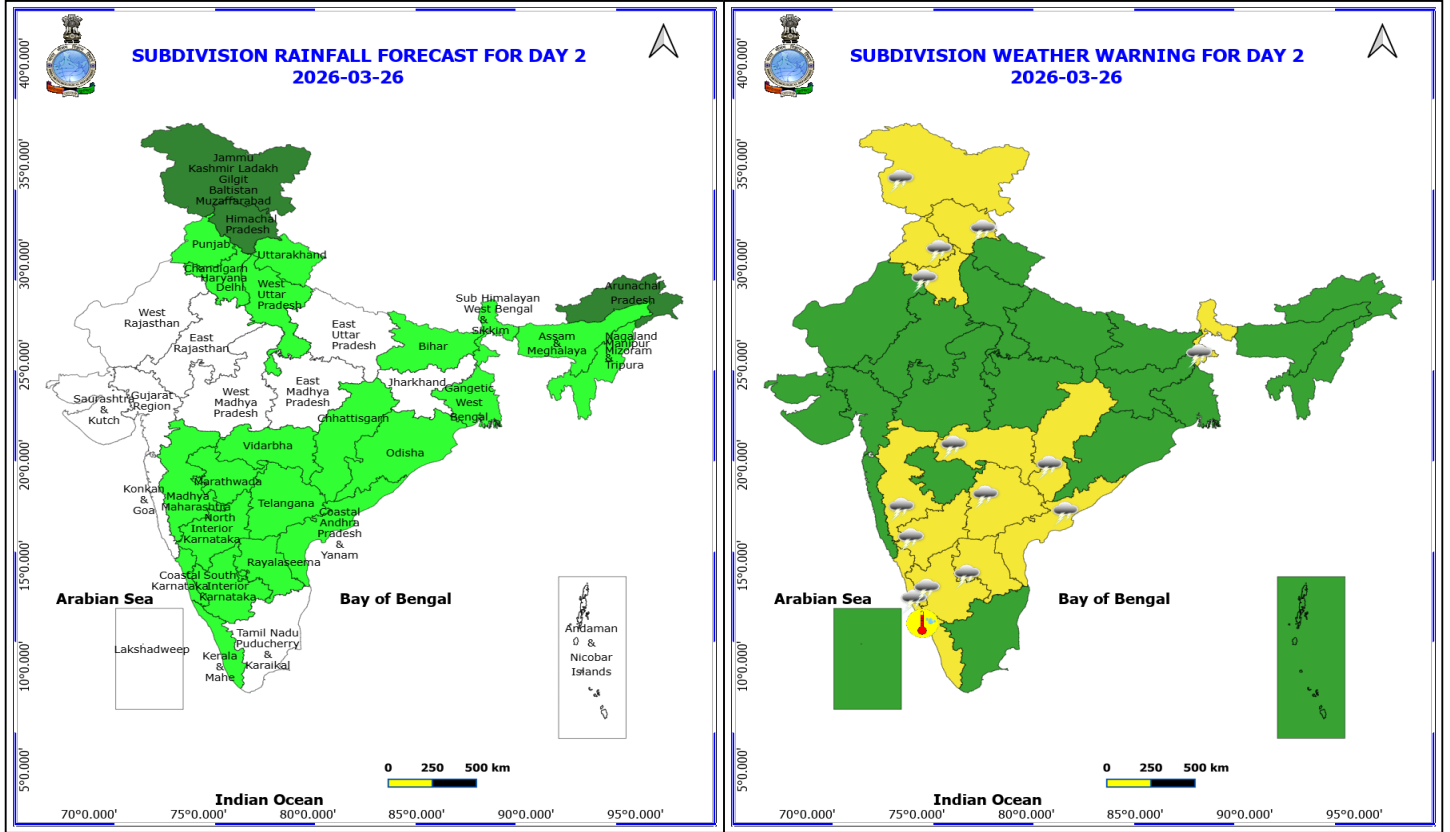
- Widespread rainfall activity likely over Northeast India and Isolated to Scattered rainfall activity over remaining parts of the country except Gujarat and South Rajasthan.



**25 March (Day 1)**

- ❖ **Thunderstorm accompanied with lightning & gusty winds(30-40kmph)** very likely at isolated places over Andhra Pradesh, Assam & Meghalaya, Interior Karnataka, Nagaland, Manipur, Mizoram and Tripura and Telangana.
- ❖ **Thunderstorm accompanied with Lightning** very likely at isolated places over Arunachal Pradesh, Madhya Maharashtra, Marathwada and Sub Himalayan West Bengal & Sikkim.
- ❖ **Hot and Humid weather** very likely at isolated places over Kerala & Mahe and Konkan & Goa.

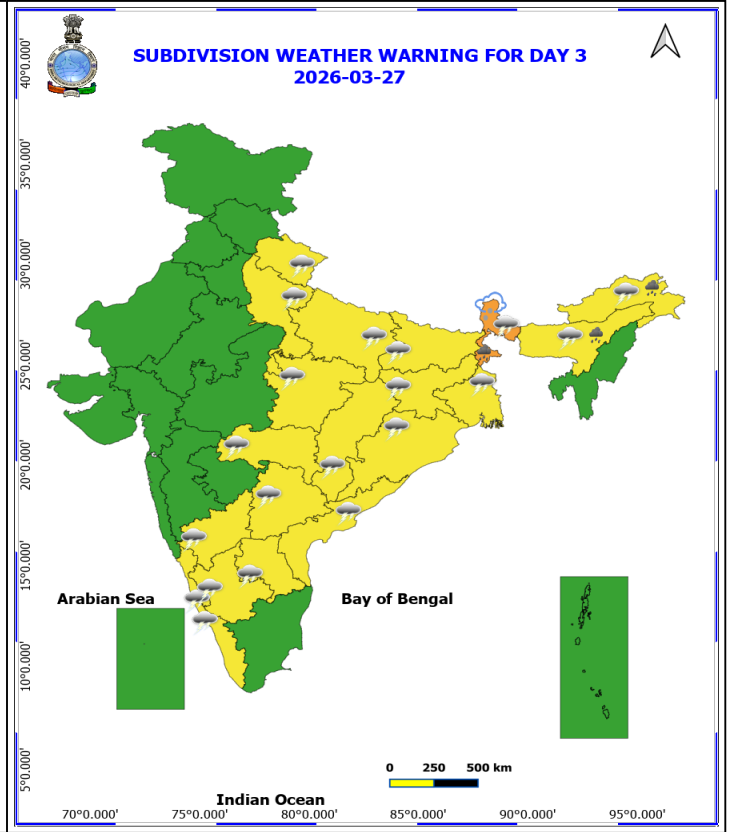
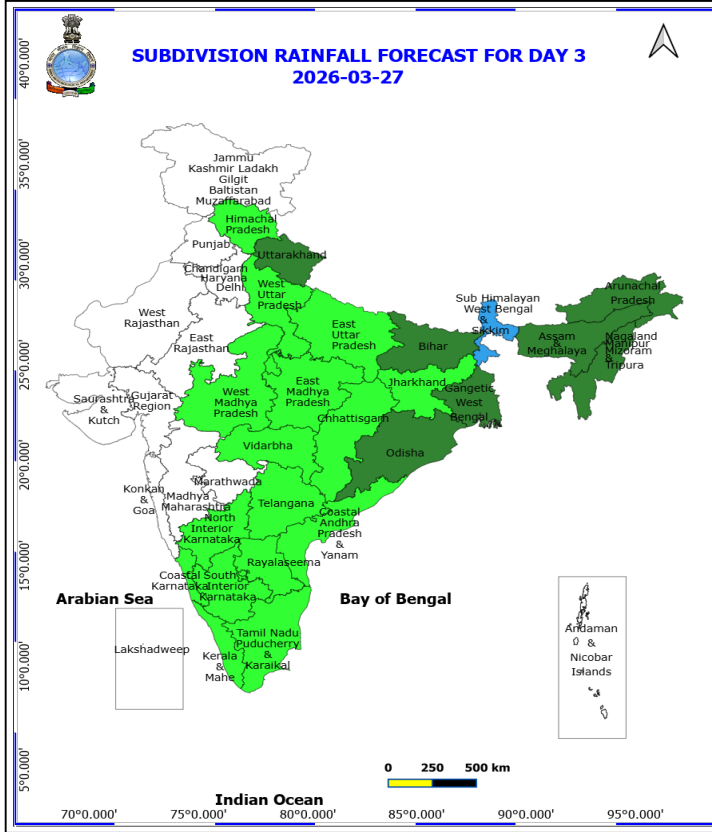
**No Fishermen Warning**



**26 March (Day 2)**

- ❖ **Thunderstorm accompanied with lightning & gusty winds(30-40kmph)** very likely at isolated places over Andhra Pradesh, Chhattisgarh, Haryana, Chandigarh & Delhi, Himachal Pradesh, Jammu-Kashmir-Ladakh-Gilgit-Baltistan-Muzaffarabad, Karnataka, Punjab, Sub Himalayan West Bengal & Sikkim, Telangana and Vidarbha.
- ❖ **Thunderstorm accompanied with Lightning** very likely at isolated places over Madhya Maharashtra.
- ❖ **Hot and Humid weather** very likely at isolated places over Kerala & Mahe.

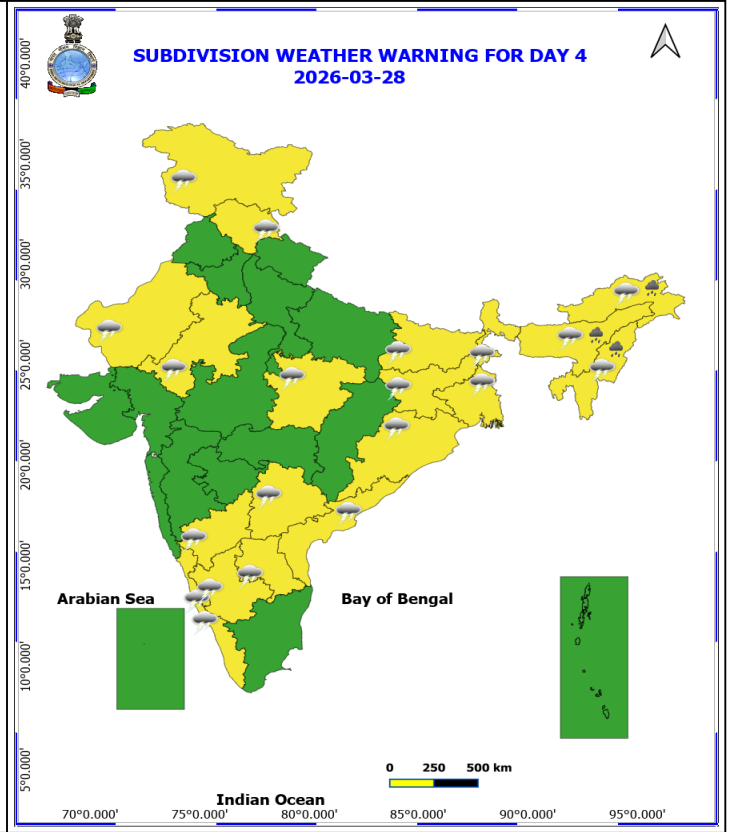
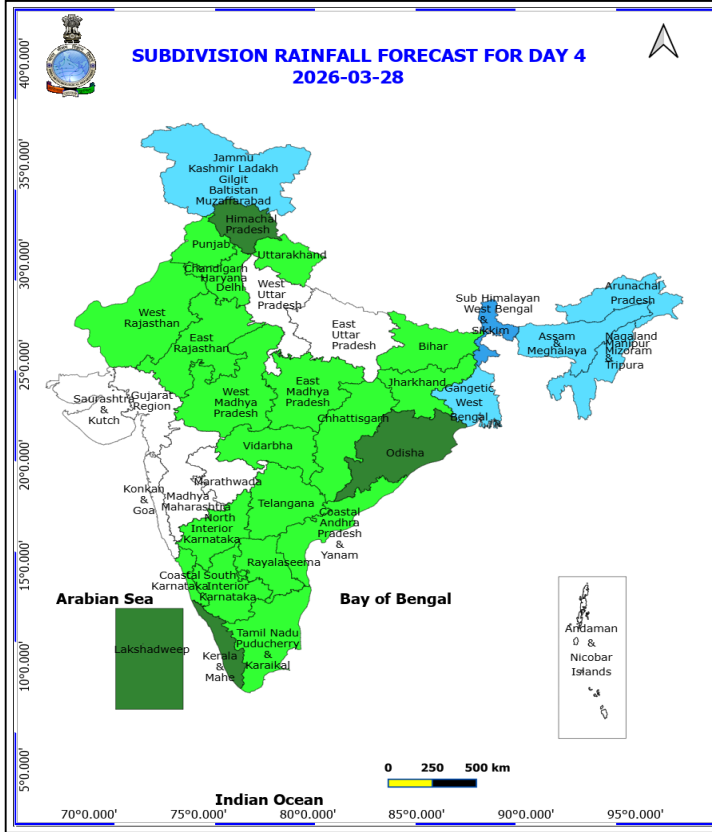
**No Fishermen Warning**



### 27 March (Day 3)

- ❖ **Heavy Rainfall** very likely at isolated places over Arunachal Pradesh, Assam & Meghalaya and Sub Himalayan West Bengal & Sikkim.
- ❖ **Thunderstorm accompanied with Hailstorm** very likely at isolated places over Sub Himalayan West Bengal & Sikkim.
- ❖ **Thundersquall with wind speed reaching(50-60kmph)** very likely at isolated places over Sub Himalayan West Bengal & Sikkim.
- ❖ **Thunderstorm accompanied with lightning & gusty winds(40-50kmph)** very likely at isolated places over Andhra Pradesh, Assam & Meghalaya, Chhattisgarh, Odisha and Uttarakhand.
- ❖ **Thunderstorm accompanied with lightning & gusty winds(30-40kmph)** very likely at isolated places over Arunachal Pradesh, Bihar, East Madhya Pradesh, Gangetic West Bengal, Jharkhand, Karnataka, Telangana, Uttar Pradesh and Vidarbha.
- ❖ **Thunderstorm accompanied with Lightning** very likely at isolated places over Kerala & Mahe.

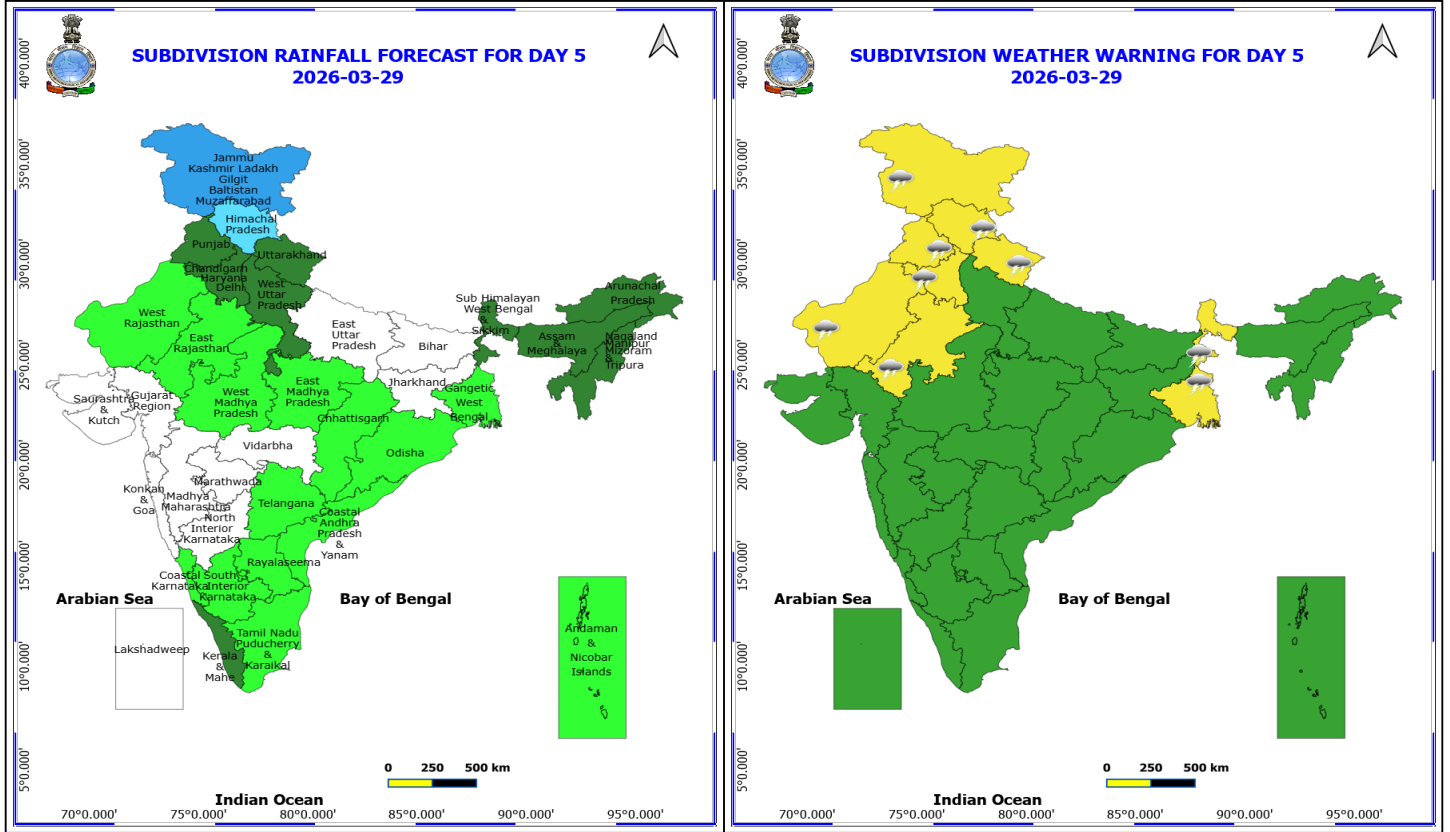
**No Fishermen Warning**



**28 March (Day 4)**

- ❖ **Heavy Rainfall** likely at isolated places over Arunachal Pradesh, Assam & Meghalaya and Nagaland, Manipur, Mizoram and Tripura.
- ❖ **Thunderstorm accompanied with lightning & gusty winds(40-50kmph)** likely at isolated places over Andhra Pradesh, Assam & Meghalaya, Himachal Pradesh, Odisha and West Bengal & Sikkim.
- ❖ **Thunderstorm accompanied with lightning & gusty winds(30-40kmph)** likely at isolated places over Arunachal Pradesh, Bihar, East Madhya Pradesh, Jammu-Kashmir-Ladakh-Gilgit-Baltistan-Muzaffargarh, Jharkhand, Karnataka, Nagaland, Manipur, Mizoram and Tripura and Telangana.
- ❖ **Thunderstorm accompanied with Lightning** likely at isolated places over Kerala & Mahe and Rajasthan.

**No Fishermen Warning**

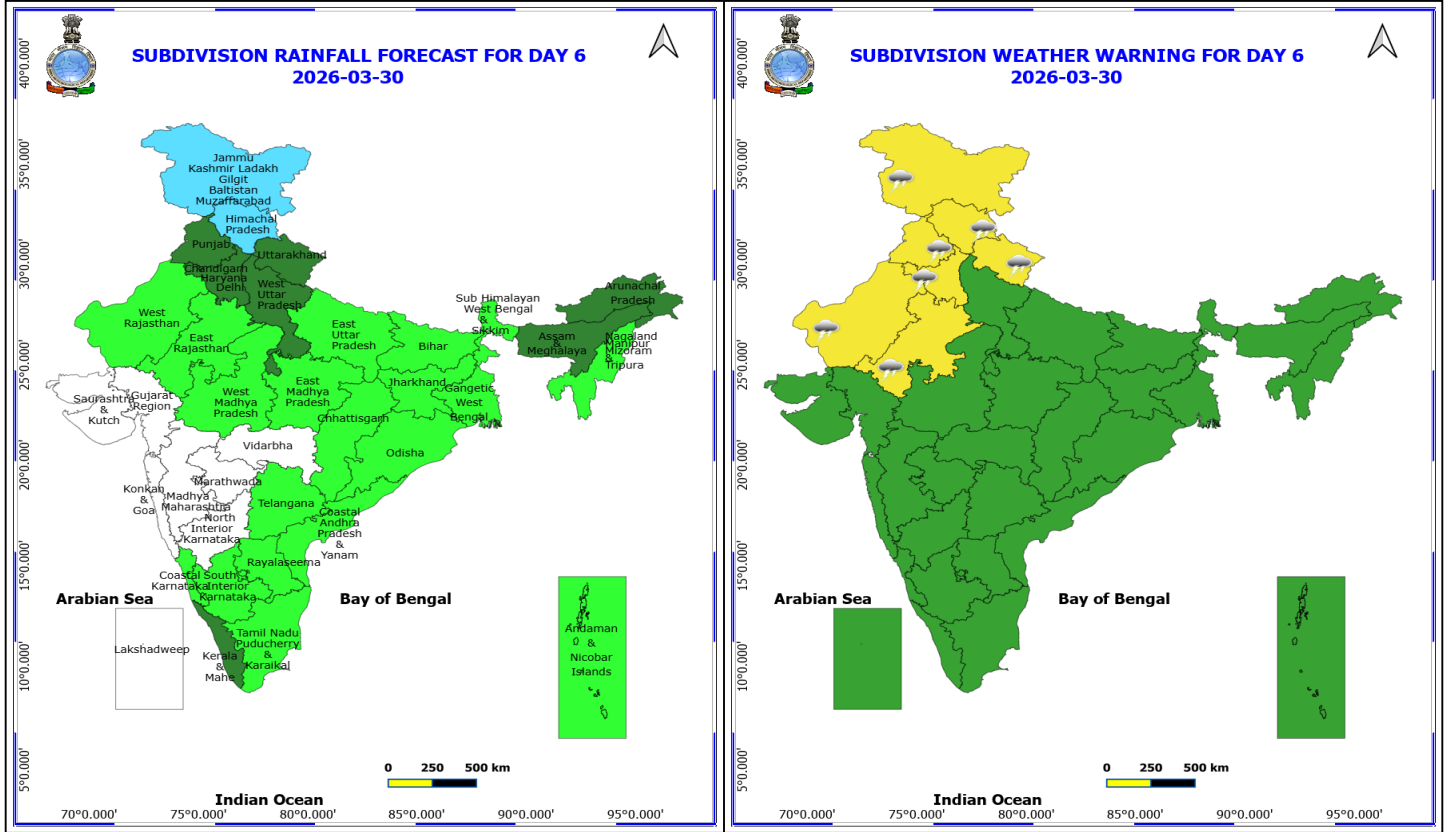


**29 March (Day 5)**

- ❖ **Thunderstorm accompanied with lightning & gusty winds(40-50kmph)** likely at isolated places over Himachal Pradesh and Uttarakhand.
- ❖ **Thunderstorm accompanied with lightning & gusty winds(30-40kmph)** likely at isolated places over Haryana, Chandigarh & Delhi, Jammu-Kashmir-Ladakh-Gilgit-Baltistan-Muzaffarabad, Punjab, Rajasthan and West Bengal & Sikkim.

**No Fishermen Warning**

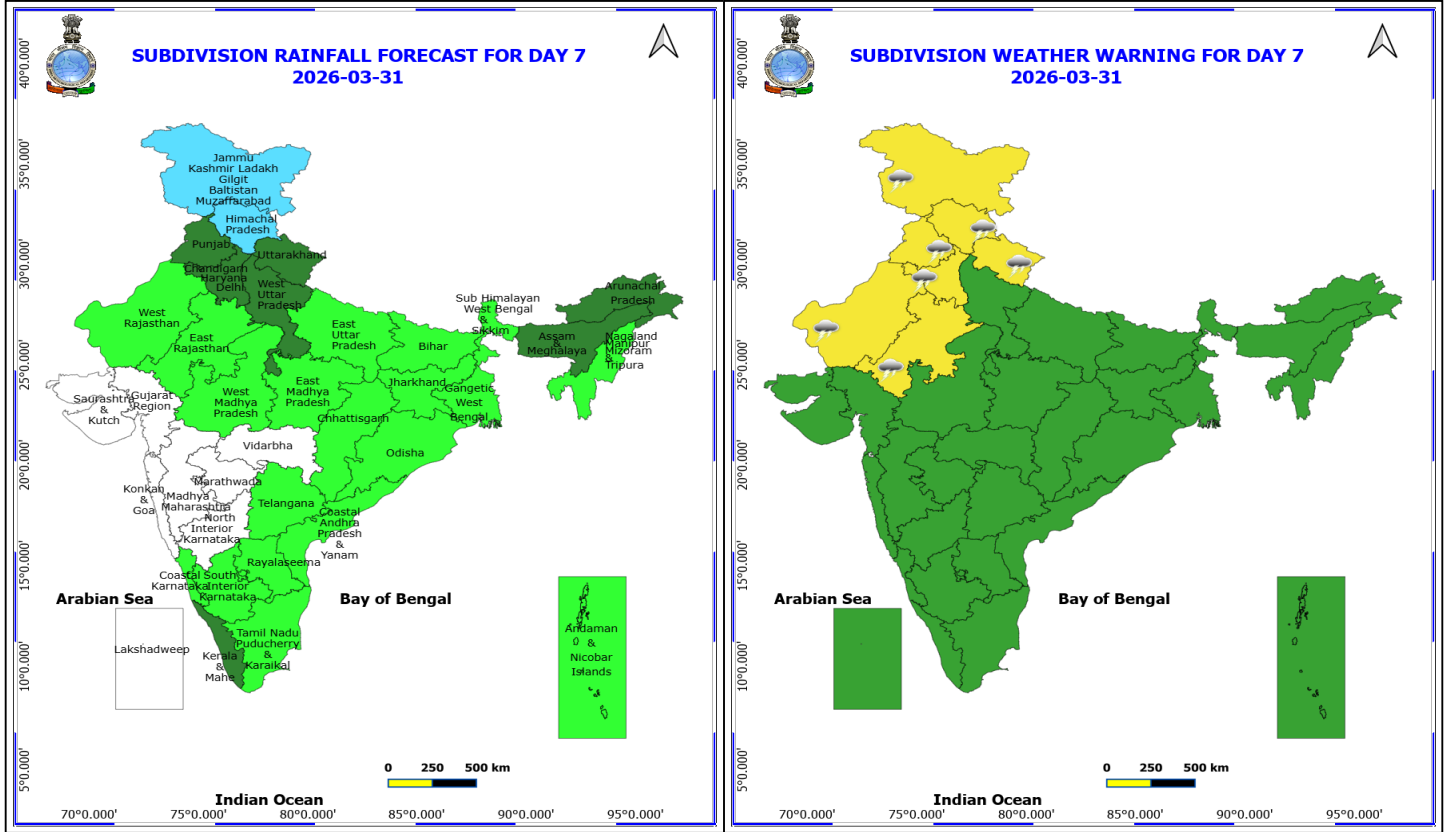
**\*Red color warning does not mean "Red Alert" Red color warning means "Take Action"**  
Forecast and warning for any day is valid from 0830 hours IST of day till 0830 hours IST of next day  
For more details kindly visit <https://mausam.imd.gov.in> or contact 011-2434-4599  
(Service to the nation since 1875)



**30 March (Day 6)**

- ❖ **Thunderstorm accompanied with lightning & gusty winds(40-50kmph)** likely at isolated places over Himachal Pradesh and Uttarakhand.
- ❖ **Thunderstorm accompanied with lightning & gusty winds(30-40kmph)** likely at isolated places over Haryana, Chandigarh & Delhi, Jammu-Kashmir-Ladakh-Gilgit-Baltistan-Muzaffarabad, Punjab and Rajasthan.

**No Fishermen Warning**



**31 March (Day 7)**

- ❖ **Thunderstorm accompanied with lightning & gusty winds(40-50kmph)** likely at isolated places over Himachal Pradesh and Uttarakhand.
- ❖ **Thunderstorm accompanied with lightning & gusty winds(30-40kmph)** likely at isolated places over Haryana, Chandigarh & Delhi, Jammu-Kashmir-Ladakh-Gilgit-Baltistan-Muzaffarabad, Punjab and Rajasthan.

**No Fishermen Warning**



## Table-1

### 7 Days Rainfall Forecast

S.No.	Subdivision	25- Mar	26- Mar	27- Mar	28- Mar	29- Mar	30- Mar	31- Mar
		Day 1	Day 2	Day 3	Day 4	Day 5	Day 6	Day 7
1	ANDAMAN & NICOBAR ISLANDS	DRY	DRY	DRY	DRY	ISOL	ISOL	ISOL
2	ARUNACHAL PRADESH	FWS	SCT	SCT	FWS	SCT	SCT	SCT
3	ASSAM & MEHGHALAYA	SCT	ISOL	SCT	FWS	SCT	SCT	SCT
4	N. M. M. & T.	ISOL	ISOL	SCT	FWS	SCT	ISOL	ISOL
5	S.H. WEST BENGAL & SIKKIM	SCT	ISOL	WS	WS	SCT	ISOL	ISOL
6	GANGETIC WEST BENGAL	ISOL	ISOL	SCT	FWS	ISOL	ISOL	ISOL
7	ODISHA	ISOL	ISOL	SCT	SCT	ISOL	ISOL	ISOL
8	JHARKHAND	DRY	DRY	ISOL	ISOL	DRY	ISOL	ISOL
9	BIHAR	DRY	ISOL	SCT	ISOL	DRY	ISOL	ISOL
10	EAST UTTAR PRADESH	DRY	DRY	ISOL	DRY	DRY	ISOL	ISOL
11	WEST UTTAR PRADESH	DRY	ISOL	ISOL	DRY	SCT	SCT	SCT
12	UTTARAKHAND	ISOL	ISOL	SCT	ISOL	SCT	SCT	SCT
13	HARYANA, CHD & DELHI	ISOL	ISOL	DRY	ISOL	SCT	SCT	SCT
14	PUNJAB	ISOL	ISOL	DRY	ISOL	SCT	SCT	SCT
15	HIMACHAL PRADESH	DRY	SCT	ISOL	SCT	FWS	FWS	FWS
16	JAMMU AND KASHMIR AND LADAKH	ISOL	SCT	DRY	FWS	WS	FWS	FWS
17	WEST RAJASTHAN	DRY	DRY	DRY	ISOL	ISOL	ISOL	ISOL
18	EAST RAJASTHAN	DRY	DRY	DRY	ISOL	ISOL	ISOL	ISOL
19	WEST MADHYA PRADESH	DRY	DRY	ISOL	ISOL	ISOL	ISOL	ISOL
20	EAST MADHYA PRADESH	DRY	DRY	ISOL	ISOL	ISOL	ISOL	ISOL
21	GUJRAT REGION	DRY	DRY	DRY	DRY	DRY	DRY	DRY
22	SAURASHTRA & KUTCH	DRY	DRY	DRY	DRY	DRY	DRY	DRY
23	KONKAN & GOA	DRY	DRY	DRY	DRY	DRY	DRY	DRY
24	MADHYA MAHARASHTRA	ISOL	ISOL	DRY	DRY	DRY	DRY	DRY
25	MARATHWADA	ISOL	ISOL	DRY	DRY	DRY	DRY	DRY
26	VIDARBHA	DRY	ISOL	ISOL	ISOL	DRY	DRY	DRY
27	CHATTISGARH	DRY	ISOL	ISOL	ISOL	ISOL	ISOL	ISOL
28	COASTAL ANDHRA PRADESH	ISOL	ISOL	ISOL	ISOL	ISOL	ISOL	ISOL
29	TELANGANA	DRY	ISOL	ISOL	ISOL	ISOL	ISOL	ISOL
30	RAYALASEEMA	ISOL	ISOL	ISOL	ISOL	ISOL	ISOL	ISOL
31	TAMILNADU & PUDUCHERRY	DRY	DRY	ISOL	ISOL	ISOL	ISOL	ISOL
32	COSTAL KARNATAKA	ISOL	ISOL	ISOL	ISOL	ISOL	ISOL	ISOL
33	NORTH INTERIOR KARNATAKA	ISOL	ISOL	ISOL	ISOL	DRY	DRY	DRY
34	SOUTH INTERIOR KARNATAKA	ISOL	ISOL	ISOL	ISOL	ISOL	ISOL	ISOL
35	KERALA	ISOL	ISOL	ISOL	SCT	SCT	SCT	SCT
36	LAKSHDWEEP	DRY	DRY	DRY	SCT	DRY	DRY	DRY

Legend	Category	%Stations
WS	Widespread/Most Places	76-100
FWS	Fairly Widespread/Many Places	51-75
SCT	Scattered/ A Few Places	26-50
ISOL	Isolated Places	1-25
DRY	No Rain	0

\*Red color warning does not mean "Red Alert" Red color warning means "Take Action"  
Forecast and warning for any day is valid from 0830 hours IST of day till 0830 hours IST of next day  
For more details kindly visit <https://mausam.imd.gov.in> or contact 011-2434-4599

(Service to the nation since 1875)

Fig. 1: Maximum Temperatures Dated 2026-03-24

Fig. 2: Departure of Maximum Temp. Dated 2026-03-24

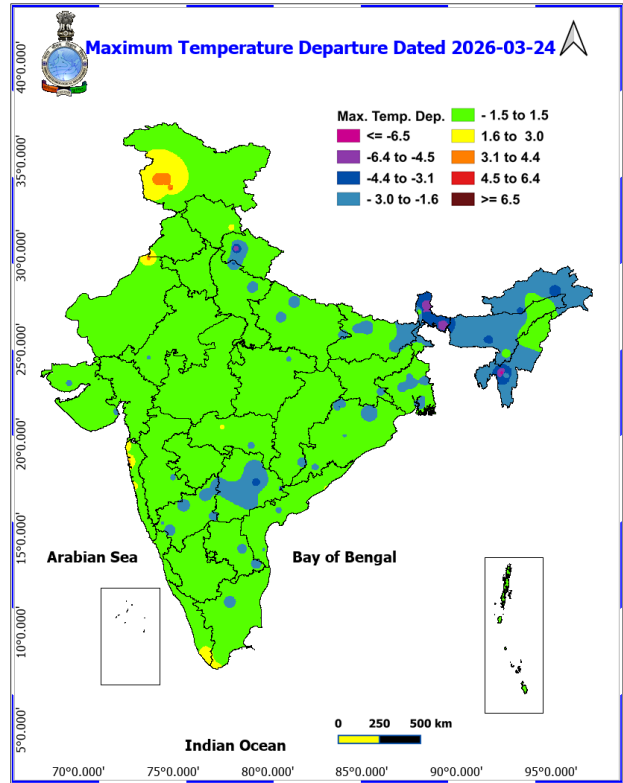
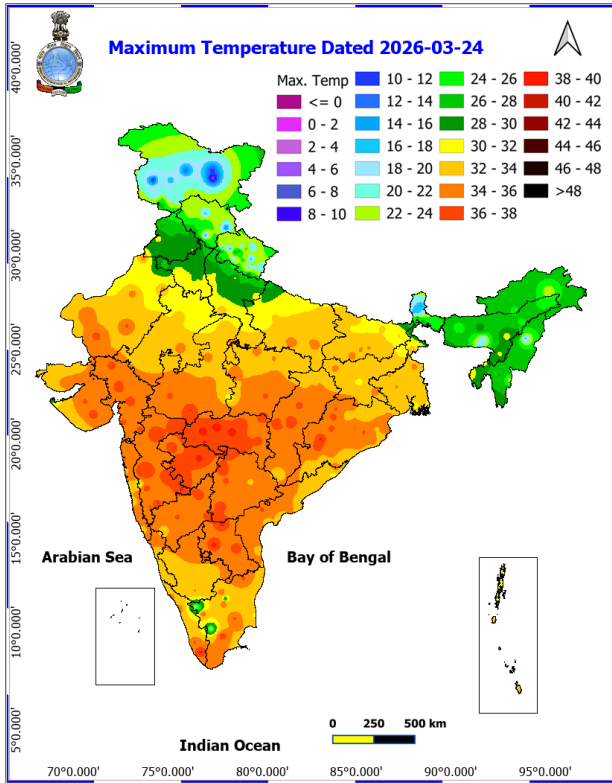
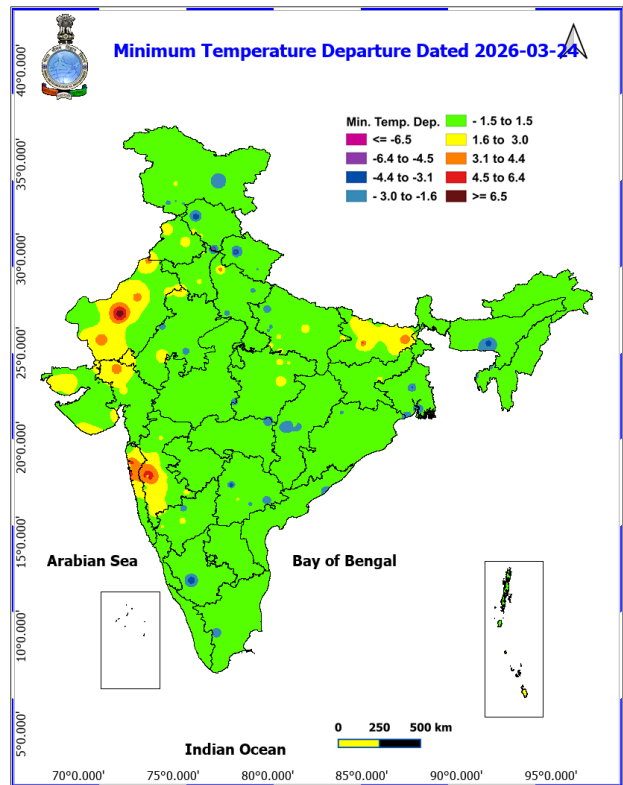
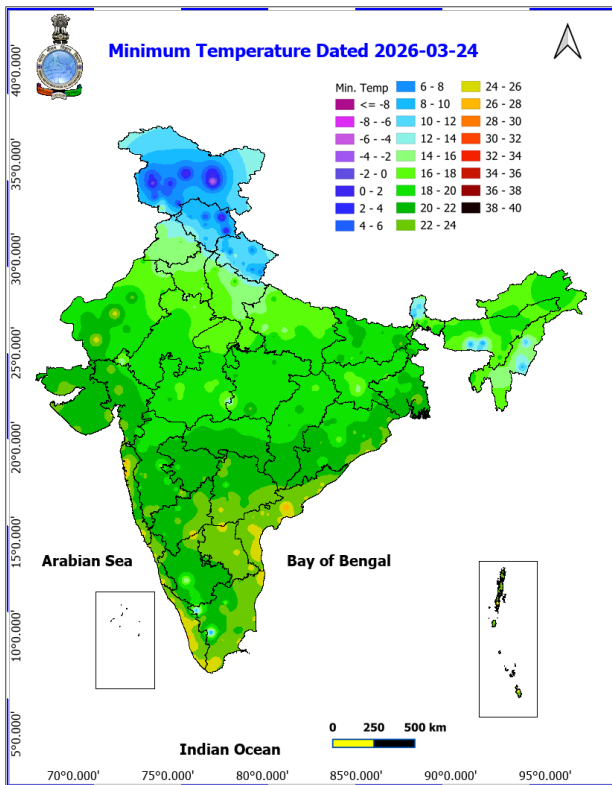
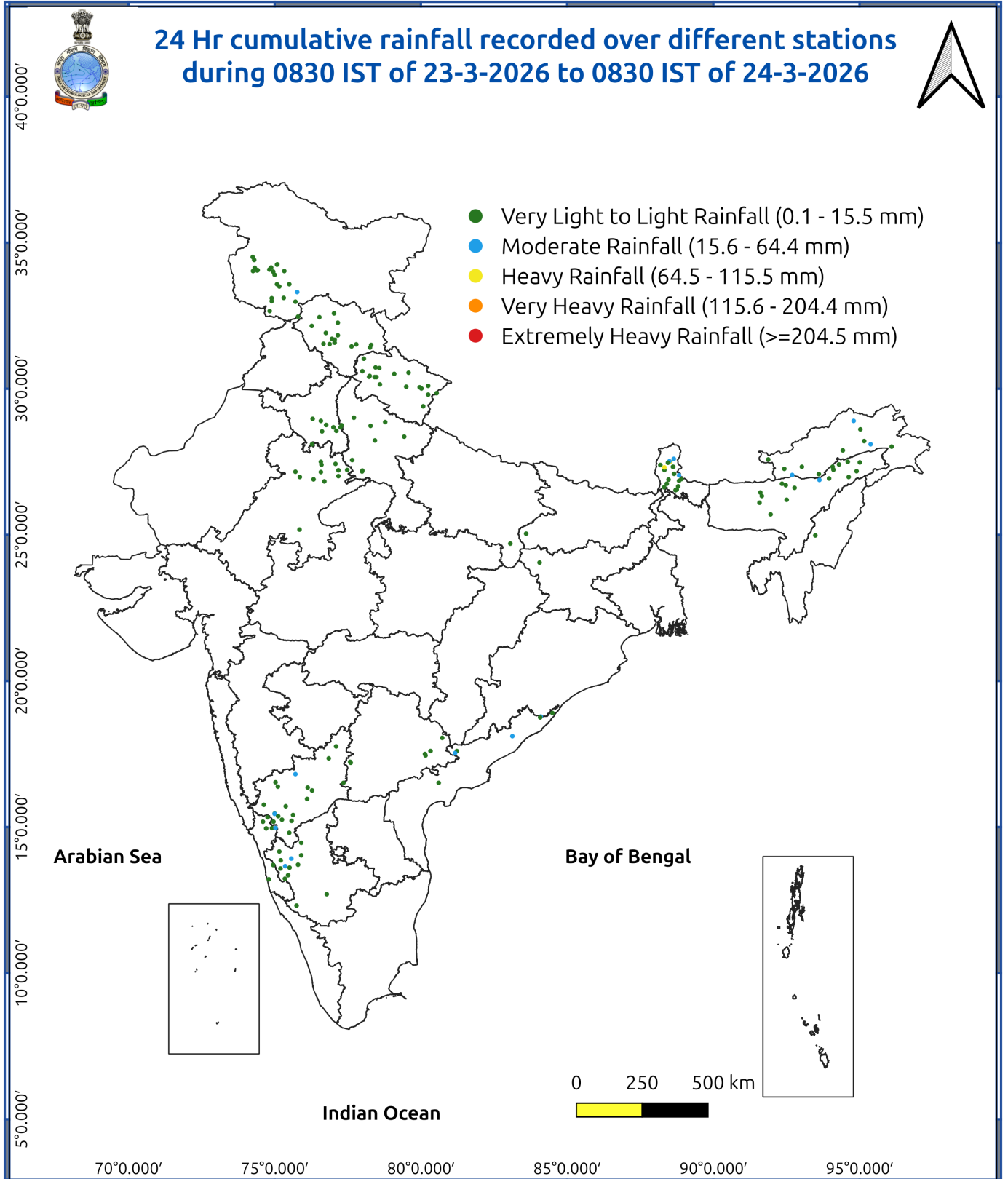


Fig. 3: Minimum Temperatures Dated 2026-03-24

Fig. 4: Departure of Minimum Temp. Dated 2026-03-24





## Impact and Actions

### Impact & Action Suggested due to heavy/very heavy rainfall:

- **Isolated heavy rainfall** likely over Sub-Himalayan West Bengal & Sikkim on 27<sup>th</sup>; Assam & Meghalaya and Arunachal Pradesh on 27<sup>th</sup> & 28<sup>th</sup> and Nagaland on 28<sup>th</sup> March.

### Impact Expected

- Localized Flooding of roads, water logging in low lying areas and closure of underpasses mainly in urban areas of the above region.
- Occasional reduction in visibility due to heavy rainfall.
- Disruption of traffic in major cities due to water logging in roads leading to increased travel time.
- Minor damage to kutcha roads.
- Possibilities of damage to vulnerable structure.
- Localized Landslides/Mudslides
- Damage to horticulture and standing crops in some areas due to inundation.
- It may lead to riverine flooding in some river catchments (for riverine flooding please visit Web page of CWC).

### Action Suggested

- Check for traffic congestion on your route before leaving for your destination.
- Follow any traffic advisories that are issued in this regard.
- Avoid going to areas that face the water logging problems often.
- Avoid staying in vulnerable structure.

### Impact expected and action suggested due to

- **Hailstorm activity** likely over Sub-Himalayan West Bengal & Sikkim on 27<sup>th</sup>.
- **Thundersquall (wind speed reaching 50-60 kmph gusting to 70 kmph)** at isolated places likely over Sub-Himalayan West Bengal & Sikkim on 27<sup>th</sup> March.

### Impact expected:

- Breaking of tree branches, uprooting of large avenue trees. Large dead limbs blown from trees. Damage to Standing crops.
- Minor to Major damage to banana and papaya trees.
- Minor to major damage to power and communication lines due to breaking of branches.
- Strong wind/hail may damage plantation, horticulture and standing crops.
- Hail may injure people and cattle at open places.
- Partial damage to vulnerable structures due to strong winds.
- Minor damage to kutcha houses/walls and huts.
- Loose objects may fly.

### Action suggested:

- People are advised to keep a watch on the weather for worsening conditions and be ready to move to safer places accordingly.
- Stay indoors, close windows & doors and avoid travel if possible.
- Take safe shelters; do not take shelter under trees.
- Do not lie on concrete floors and do not lean against concrete walls.
- Unplug electrical/ electronic appliances.
- Immediately get out of water bodies.
- Keep away from all the objects that conduct electricity.

**\*Red color warning does not mean "Red Alert" Red color warning means "Take Action"**  
Forecast and warning for any day is valid from 0830 hours IST of day till 0830 hours IST of next day  
For more details kindly visit <https://mausam.imd.gov.in> or contact 011-2434-4599

(Service to the nation since 1875)

## Agromet advisories for various parts of the country

### Agromet advisories for likely impact of Hailstorms

- Use hail nets or hail caps in fruit orchards and vegetable plants to protect them from mechanical damage in **Sub-Himalayan West Bengal, North Interior Karnataka** and **South Interior Karnataka**.

### Agromet advisories for likely impact of Heavy Rainfall

- In **Arunachal Pradesh**, undertake harvesting of cabbage, pea, mustard and late-maturing paddy varieties and digging of potatoes. Shift the harvested produce to safe places. Maintain proper drainage channels in the fields of rice, maize, other standing crops, vegetables and orchards.
- In **Assam**, drain out excess rainwater from the standing crop fields.
- In **Meghalaya**, ensure proper drainage in summer vegetable crops. Carry out staking and propping of plantation crops and protect young seedlings from heavy rainfall. Keep the harvested pods of garden peas in safer place immediately.
- In **Sub Himalayan West Bengal**, ensure proper drainage channel, and drain out excess water from fields of rice, maize, other standing crops, vegetables and orchard. Cover the nursery of cucurbits and Dalle khorsani with polyethylene sheets or agro-nets.

### Agromet advisories for likely impact of Thunderstorm / Gusty Winds

- Shift the harvested produce in safer places or cover the produce with tarpaulin sheets in the fields. Tie the harvested crops properly and cover them to minimise the risk of displacement due to strong surface winds.
- Provide mechanical support to horticultural crops and staking or support to vegetables and young fruit plants / fruit-bearing plants to avoid lodging due to strong winds.

### Agromet advisories for likely impact of Hot and Humid Weather

- In Konkan Region of **Maharashtra**, provide 100 litre water/tree at weekly or 150 to 200 litre water/ tree at 15 days interval to minimize pre-mature fruit drop and sun scorching in mango and poor fruit set and reduced nut size in cashew orchards. Use straw mulch to prevent moisture loss from the soil. Undertake pre-harvest bagging of fruits with newspaper bags to protect the mango fruits from sunscald.

### Livestock / Poultry

- Keep the animals inside the shed during Heavy Rainfall/Hailstorm period and provide them balanced feed. Store feed and fodder in a safe place to prevent spoilage.

## LEGENDS

- 1 अंडमान और निकोबार द्वीप समुह
- 2 अरुणाचल प्रदेश
- 3 असम और मेघालय
- 4 नागालैंड मनीपुर मीजोरम और त्रिपुरा
- 5 उप हिमालय पश्चिम बंगाल एवं सिक्किम
- 6 पश्चिम बंगाल
- 7 ओडिसा
- 8 झारखंड
- 9 बिहार
- 10 पूर्वी उत्तर प्रदेश
- 11 पश्चिम उत्तर प्रदेश
- 12 उत्तराखंड
- 13 हरियाणा चंडिगढ़ एवं दिल्ली
- 14 पंजाब
- 15 हिमाचल प्रदेश
- 16 जम्मू एवं कश्मीर एवं लद्दाख
- 17 पश्चिम राजस्थान
- 18 पूर्वी राजस्थान
- 19 पश्चिम मध्य प्रदेश
- 20 पूर्वी मध्य प्रदेश
- 21 गुजरात क्षेत्र
- 22 सौराष्ट्र एवं कच्छ
- 23 कोंकण एवं गोवा
- 24 मध्य महाराष्ट्र
- 25 मराठावाडा
- 26 विदर्भ
- 27 छत्तीसगढ़
- 28 तटीय आंध्र प्रदेश एवं यनम
- 29 तेलंगाना
- 30 रायलसीमा
- 31 तमिलनाडु, पुदुचेरी एवं कराईकल
- 32 तटिय कर्नाटक
- 33 आंतरिक उत्तरी कर्नाटक
- 34 आंतरिक दक्षिणी कर्नाटक
- 35 केरल एवं माहे
- 36 लक्षद्वीप



1. Andaman & Nicobar Islands
2. Arunachal Pradesh
3. Assam & Meghalaya
4. Nagaland, Manipur, Mizoram & Tripura
5. Sub-Himalayan West Bengal & Sikkim
6. Gangetic West Bengal
7. Orissa
8. Jharkhand
9. Bihar
10. East Uttar Pradesh
11. West Uttar Pradesh
12. Uttarakhand
13. Haryana, Chd & Delhi
14. Punjab
15. Himachal Pradesh
16. Jammu & Kashmir and Ladakh
17. West Rajasthan
18. East Rajasthan
19. West Madhya Pradesh
20. East Madhya Pradesh
21. Gujarat
22. Saurashtra
23. Konkan & Goa
24. Madhya Maharashtra
25. Marathawada
26. Vidharbha
27. Chhattisgarh
28. Coastal Andhra Pradesh & Yanam
29. Telangana
30. Rayalaseema
31. Tamilnadu, Puducherry & Karaikal
32. Coastal Karnataka
33. North Interior Karnataka
34. South Interior Karnataka
35. Kerala & Mahe
36. Lakshadweep

## SPATIAL DISTRIBUTION (% of Stations reporting)

% Stations	Category	% Stations	Category
76-100	Widespread (WS/ Most Places)	26-50	Scattered (SCT/ A Few Places)
51-75	Fairly Widespread (FWS/ Many Places)	1-25	Isolated (ISOL)

### Subdivision Colour

- NO WARNING
- WATCH (BE UPDATED)
- ALERT (BE PREPARED TO TAKE ACTION)
- WARNING (TAKE ACTION)

### Probabilistic Forecast

Terms	Probability of Occurrence (%)
Unlikely	< 25
Likely	25 - 50
Very Likely	50 - 75
Most Likely	> 75

- |                          |                 |                      |                    |
|--------------------------|-----------------|----------------------|--------------------|
| Heavy Rain               | Very Heavy Rain | Extremely Heavy Rain | Heavy Snow         |
| Thunderstorm & Lightning | Hailstrom       | Dust Storm           | Dust Raising Winds |
| Strong surface winds     | Heat Wave       | Hot Day              | Warm Night         |
| Cold Wave                | Cold Day        | Ground Frost         | Fog                |
| Hot & Humid              |                 |                      |                    |

\*Red color warning does not mean "Red Alert" Red color warning means "Take Action"

Forecast and warning for any day is valid from 0830 hours IST of day till 0830 hours IST of next day

For more details kindly visit <https://mausam.imd.gov.in> or contact 011-2434-4599

(Service to the nation since 1875)

## LEGENDS

### WARNING

WARNING (TAKE ACTION)
ALERT ( BE PREPARED)
WATCH (BE UPDATED)
NO WARNING ( NO ACTION)

### Probabilistic Forecast

Terms	Probability of Occurrence (%)
Unlikely	< 25
Likely	25 - 50
Very Likely	50 - 75
Most Likely	> 75



Heavy: 64.5 to 115.5 mm/cm \*  
Very Heavy: 115.6 to 204.4 mm/cm\*  
Extremely Heavy: > 204.4 mm/cm \*



When maximum temperature of a station reaches  $\geq 40^{\circ}\text{C}$  for plains and  $\geq 30^{\circ}\text{C}$  for hilly regions  
(a) Based on Departure from normal

Heat Wave: Maximum Temperature Departure from normal  $4.5^{\circ}\text{C}$  to  $6.4^{\circ}\text{C}$ .  
Severe Heat Wave: Maximum Temperature Departure from normal  $\geq 6.5^{\circ}\text{C}$

(b). Based on Actual maximum temperature

Heat Wave: When actual maximum temperature  $\geq 45^{\circ}\text{C}$ .  
Severe Heat Wave: When actual maximum temperature  $\geq 47^{\circ}\text{C}$

(c). Criteria for heat wave for coastal stations

When maximum temperature departure is  $> 4.5^{\circ}\text{C}$  from normal. Heat Wave may be described provided maximum temperature  $\geq 37^{\circ}\text{C}$



When maximum temperature remains  $40^{\circ}\text{C}$

Warm Night: When minimum temperature departure  $4.5^{\circ}\text{C}$  to  $6.4^{\circ}\text{C}$ .  
Severe Warm Night: When minimum temperature departure  $> 6.4^{\circ}\text{C}$ .



When minimum temperature of a station  $\leq 10^{\circ}\text{C}$  for plains and  $\leq 0^{\circ}\text{C}$  for hilly regions.

(a). Based on departure

Cold Wave: Minimum Temperature Departure from normal  $-4.5^{\circ}\text{C}$  to  $-6.4^{\circ}\text{C}$ .  
Severe Cold Wave: Minimum Temperature Departure from normal  $\leq -6.5^{\circ}\text{C}$

(b) Based on actual Minimum Temperature (for Plains only)

Cold Wave : When Minimum Temperature is  $\leq 4.0^{\circ}\text{C}$   
Severe Cold Wave: When Minimum Temperature is  $\leq 2.0^{\circ}\text{C}$

(c) For Coastal Stations

When Minimum Temperature departure is  $\leq -4.5^{\circ}\text{C}$  & actual Minimum Temperature is  $\leq 15^{\circ}\text{C}$



When minimum temperature of a station  $\leq 10^{\circ}\text{C}$  for plains and  $\leq 0^{\circ}\text{C}$  for hilly regions  
Based on departure

Cold Day: Maximum Temperature Departure from normal  $-4.5^{\circ}\text{C}$  to  $-6.4^{\circ}\text{C}$ .  
Severe Cold Day: Maximum Temperature Departure from normal  $\leq -6.5^{\circ}\text{C}$



Phenomenon of small droplets suspended in air and the horizontal visibility  $< 1\text{km}$

Moderate Fog: When the visibility between 500-200 metres  
Dense Fog: when the visibility between 50- 200 metres  
Very Dense Fog: when the visibility  $< 50$  metres



Sudden electrical discharges manifested by a flash of light (Lightning) and a sharp rumbling sound (thunder)



An ensemble of particles of dust or sand energetically lifted to great heights by a strong and turbulent wind.



Ice deposits on ground

Air temperature  $\leq 4^{\circ}\text{C}$  ( over Plains)



A strong wind that rises suddenly, lasts for atleast 1 minute.

Moderate: Wind speed 52-61 kmph  
Severe: Wind speed 62-87 kmph  
Very Severe: Wind speed  $> 87$  kmph



Effect of various waves in the sea over specific area

Rough to very rough: Wind speed 41-62 kmph (22-33 knots) & Wave height 2.5-6 metre  
High to very high: Wind speed 63-117 kmph ( 34-63 knots) & Wave height 6-14 metre  
Phenomenal: Wind speed  $> 117$  kmph ( $> 63$  knots) & Wave height  $> 14$  metre



Cyclonic Storm: Wind speed 62-87 kmph (34-47 knots)  
Severe Cyclonic Storm: Wind speed 88-117 kmph (48-63 knots)  
Very Severe Cyclonic Storm: Wind speed 118-165 kmph (64 - 89 knots)  
Extremely Severe Cyclonic Storm: Wind speed 166-220 kmph (90 -119 knots)  
Super Cyclone Storm: Wind speed  $> 220$  kmph ( $> 119$  knots)

\*Red color warning does not mean "Red Alert" Red color warning means "Take Action"

Forecast and warning for any day is valid from 0830 hours IST of day till 0830 hours IST of next day

For more details kindly visit <https://mausam.imd.gov.in> or contact 011-2434-4599

(Service to the nation since 1875)