

2025-10-16

Time of Issue: 07:55:00 hours IST
(Morning)

ALL INDIA WEATHER SUMMARY AND FORECAST BULLETIN

Significant Weather Features

Weather Forecast and Warnings:

South Peninsular India:

- ♦ Light to moderate rain/thunderstorm at some/ isolated places with isolated **heavy rainfall** over Tamil Nadu during 16th -20th; Kerala & Mahe during 16th -21st; Lakshadweep during 16th -21st; Coastal Andhra Pradesh & Yanam and Rayalaseema on 16th & 17th; Coastal & South Interior Karnataka on 16th October; with **very heavy rainfall** over Tamil Nadu, Kerala & Mahe on 16th & 17th October.
- ♦ Thunderstorm with lightning and gusty wind (speed reaching 30-40 kmph) over the region for next 5 days.

East & Central India:

- ♦ Thunderstorm with lightning and gusty winds (speed reaching 30-40 kmph) over south Odisha on 16th with lightning over Madhya Pradesh on 16th October.

West India:

- ♦ Thunderstorm with lightning over Konkan & Goa on 16th & 17th with isolated **heavy rainfall over** Marathwada on 16th October.

***Red color warning does not mean "Red Alert" Red color warning means "Take Action"**

Forecast and warning for any day is valid from 0830 hours IST of day till 0830 hours IST of next day

For more details kindly visit <https://mausam.imd.gov.in> or contact 011-2434-4599

(Service to the nation since 1875)

Main Weather Observations:

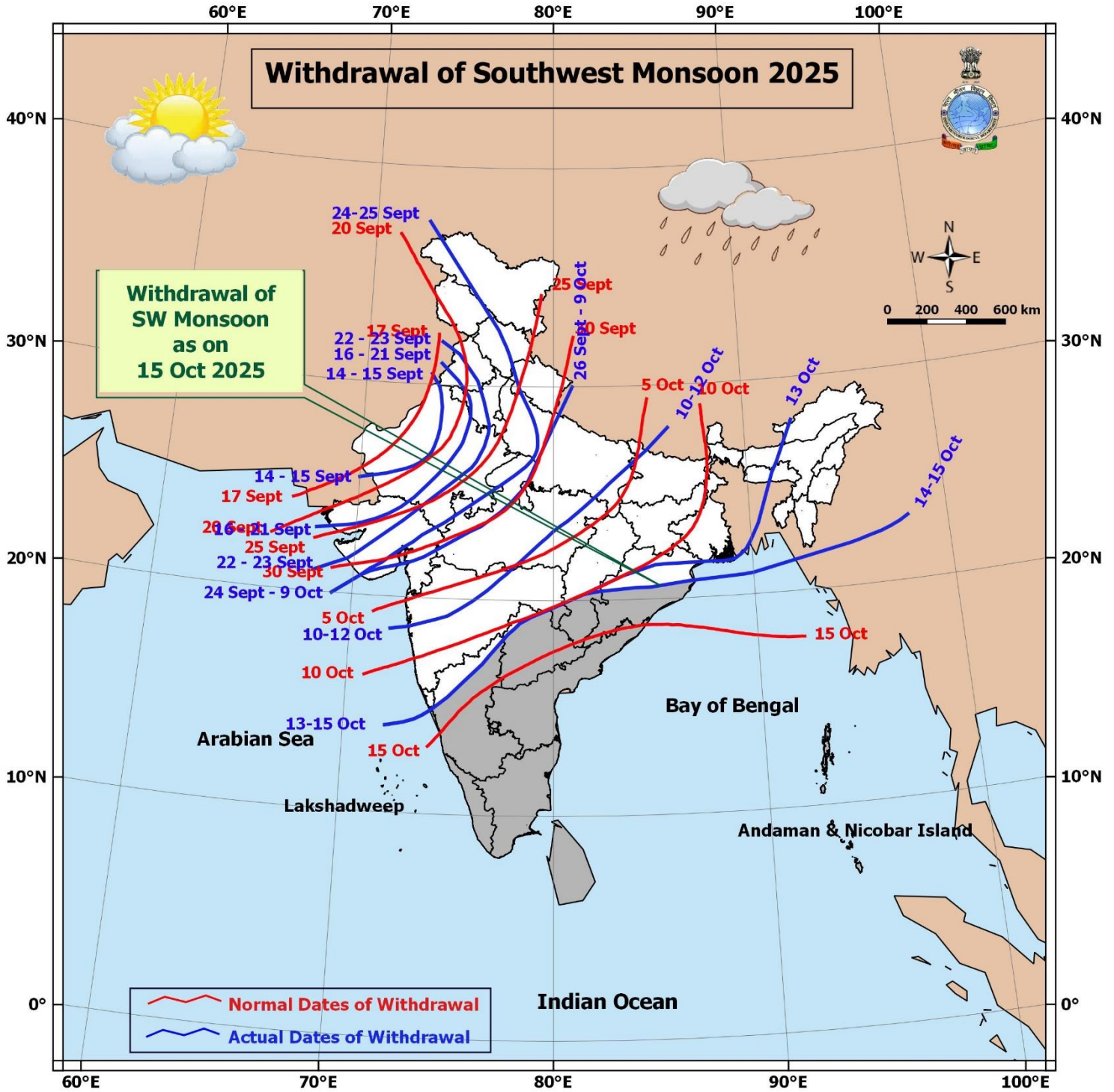
- ❖ **Rainfall distribution** (from 0830 hours IST to 1730 hours IST of yesterday): **at many places** over Madhya Maharashtra , Tamilnadu Puducherry & Karaikal, Telangana, Konkan & Goa , Andaman & Nicobar Islands, Rayalaseema, Coastal Andhra Pradesh & Yanam, Coastal Karnataka, North Interior Karnataka, South Interior Karnataka, Kerala & Mahe and Lakshadweep ; **Dry** over rest of the country.
- ❖ **Significant rainfall recorded(in cm)** (from 0830 hours IST to 1730 hours IST of yesterday): **Telangana:** Hanamkonda (dist Hanumakonda) 1; Coastal Andhra Pradesh & yanam: Nellore (dist Sri Potti Sriramulu Nellore) 1; Konkan & Goa : Ratnagiri (dist Ratnagiri) 1; Madhya Maharashtra : Mahabaleshwar (dist Satara), Sangli (dist Sangli) 1 Each; Tamilnadu, Puducherry & karaikal: Cuddalore (dist Cuddalore) 1.
- ❖ **Minimum Temperature Departures (as on 15-10-2025): markedly above normal(> 5.1°C)** at isolated places over Assam & Meghalaya and Bihar. **appreciably above normal(3.1°C to 5.0°C)** at few places over Nagaland, Manipur, Mizoram & Tripura, Himachal Pradesh and Vidarbha; at isolated places over Sub Himalayan West Bengal & Sikkim, Konkan & Goa and Madhya Maharashtra. **above normal(1.6°C to 3.0°C)** at many places over Punjab; at few places over Uttarakhand, Jammu-KashmirLadakh-Gilgit-Baltistan-Muzaffarabad, Marathwada, Telangana and Lakshadweep; at isolated places over West Uttar Pradesh, Haryana-Chandigarh-Delhi and Tamil Nadu, Puducherry & Karaikal. **near normal(-1.5°C to 1.5°C)** at many places over Gangetic West Bengal, East Uttar Pradesh and Chhattisgarh; at most places over Andaman & Nicobar Islands, Arunachal Pradesh, Odisha, Jharkhand, East Madhya Pradesh, Coastal Andhra Pradesh & Yanam, Rayalaseema, Coastal Karnataka, North Interior Karnataka, South Interior Karnataka and Kerala & Mahe; at few places over West Rajasthan, East Rajasthan, West Madhya Pradesh, Gujarat Region and Saurashtra & Kutch. **The lowest minimum temperature** of 14.8°C was reported at NAGPUR (RAJASTHAN) over the Plains of India.
- ❖ **Maximum Temperature Departures (as on 15-10-2025): markedly above normal(> 5.1°C)** at isolated places over Assam & Meghalaya, Jammu-KashmirLadakh-Gilgit-Baltistan-Muzaffarabad, Chhattisgarh and Coastal Andhra Pradesh & Yanam. **appreciably above normal(3.1°C to 5.0°C)** at few places over Arunachal Pradesh, Sub Himalayan West Bengal & Sikkim and Coastal Karnataka; at isolated places over Nagaland, Manipur, Mizoram & Tripura, Konkan & Goa and Vidarbha. **above normal(1.6°C to 3.0°C)** at few places over Lakshadweep; at isolated places over Andaman & Nicobar Islands, Gangetic West Bengal, Odisha, Himachal Pradesh, Saurashtra & Kutch, Madhya Maharashtra, Telangana, Tamil Nadu, Puducherry & Karaikal and Kerala & Mahe. **near normal(-1.5°C to 1.5°C)** at many places over Jharkhand, East Uttar Pradesh, West Uttar Pradesh, Uttarakhand, Haryana-Chandigarh-Delhi, Punjab, West Rajasthan and Gujarat Region; at most places over Marathwada, Rayalaseema, North Interior Karnataka and South Interior Karnataka; at few places over Bihar, West Madhya Pradesh and East Madhya Pradesh; at isolated places over East Rajasthan. **The highest maximum temperature** of 36.8°C was reported at BARMER (RAJASTHAN).

Meteorological Analysis (Based on 0530 hours IST)

- ❖ The **line of withdrawal of southwest monsoon** continue to pass through 14°N/72°E, Karwar, Kalaburagi, Nizamabad, Kanker, Chandbali, 21.0°N/ 90.0°E, 22.0°N/ 95.0°E & 23.0°N/ 98.0°E.
- ❖ Conditions are favourable for further withdrawal of **southwest monsoon** from remaining parts of country during next 24 hours. Simultaneously with the setting in of easterly & northeasterly winds over southern peninsular India and south & adjoining central Bay of Bengal, the **Northeast Monsoon** rainfall activity is likely to commence over south east peninsular region during the same period.
- ❖ The **upper air cyclonic circulation** over south Bangladesh & neighbourhood persists and now extends upto 1.5 km above mean sea level.
- ❖ The **upper air cyclonic circulation** over south Bihar & neighbourhood between 3.1 & 5.8 km above mean sea level persists.
- ❖ The **upper air cyclonic circulation** over coastal Tamil Nadu & adjoining Comorin Area extending upto 1.5 km above mean sea level persists.
- ❖ The **upper air cyclonic circulation** over southeast Arabian Sea & adjoining Lakshadweep area persists over the same region extending upto 5.8 km above mean sea level tilting southward with height. Under its influence, a **low pressure area** is likely to form over southeast Arabian Sea & Lakshadweep area off Kerala-Karnataka coasts around 19th October, 2025.

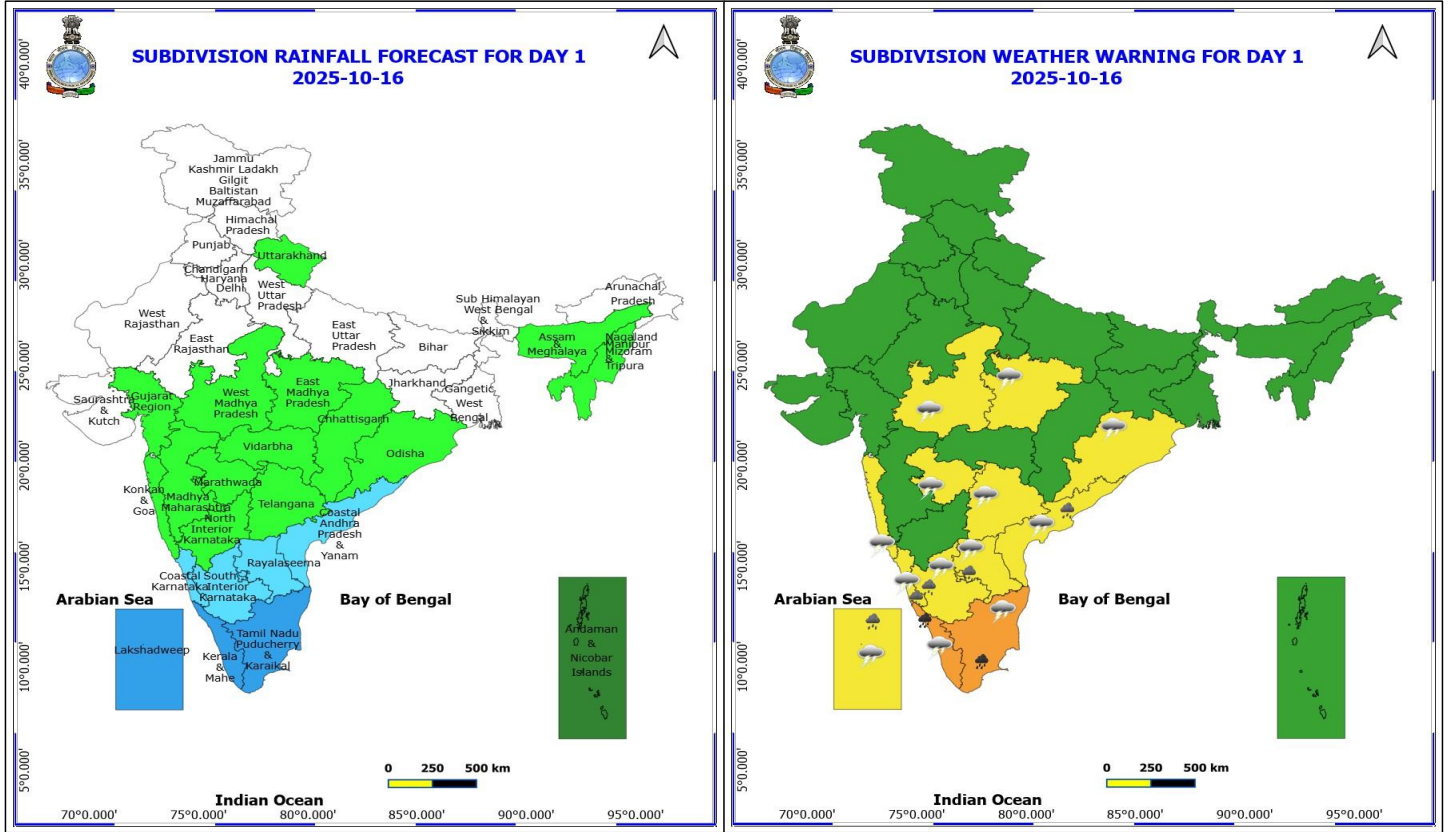
Weather Outlook for subsequent 3 days

- ◆ Scattered to Fairly widespread rainfall activity likley over South Peninsular India.



*Red color warning does not mean "Red Alert" Red color warning means "Take Action"
Forecast and warning for any day is valid from 0830 hours IST of day till 0830 hours IST of next day
For more details kindly visit <https://mausam.imd.gov.in> or contact 011-2434-4599

(Service to the nation since 1875)



16 October (Day 1)

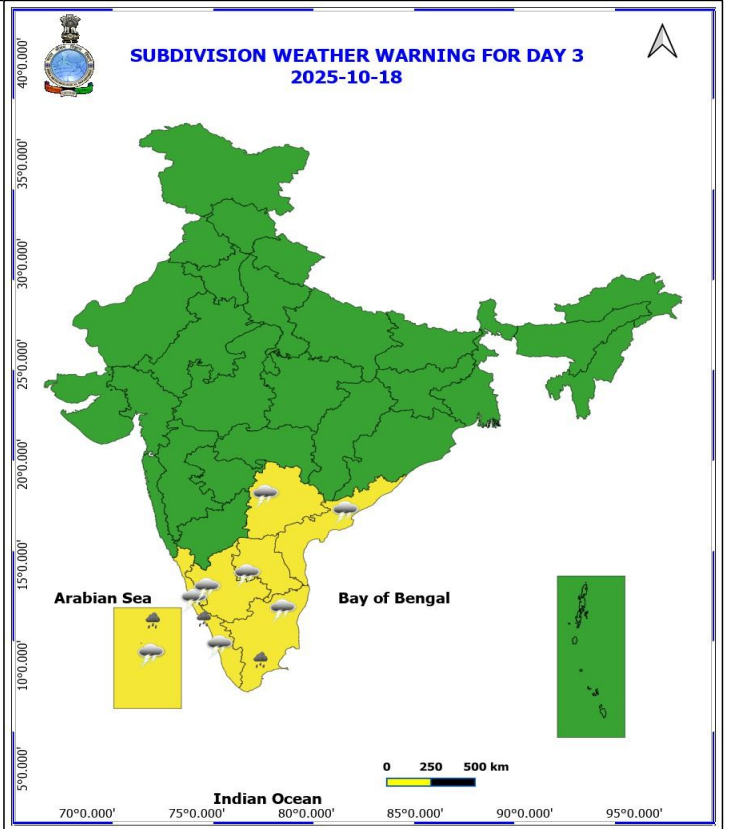
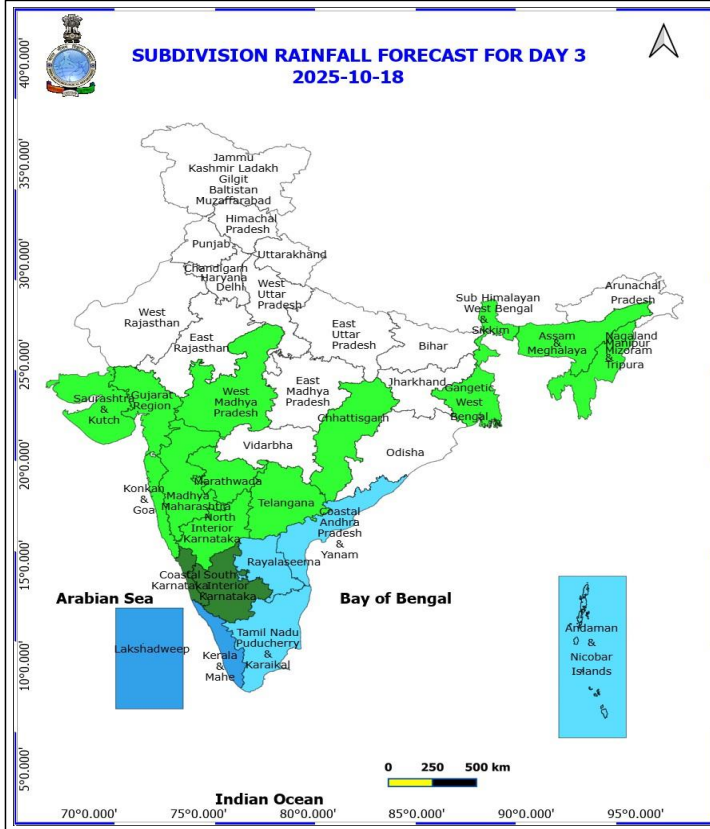
- ❖ **Heavy to Very Heavy Rainfall** very likely at isolated places over Kerala & Mahe and Tamil Nadu Puducherry & Karaikal.
 - ❖ **Heavy Rainfall** very likely at isolated places over Andhra Pradesh, Coastal Karnataka, Lakshadweep and South Interior Karnataka.
 - ❖ **Thunderstorm accompanied with lightning & gusty winds(30-40kmph)** very likely at isolated places over Coastal Karnataka, Kerala & Mahe, Lakshadweep, Odisha, South Interior Karnataka, Tamil Nadu Puducherry & Karaikal and Telangana.
 - ❖ **Thunderstorm accompanied with Lightning** very likely at isolated places over Andhra Pradesh, Konkan & Goa, Madhya Pradesh and Marathwada.
- Squally weather with wind speed 35 kmph to 45kmph gusting to 55 kmph** likely to prevail along and off Kerala coasts and adjoining sea areas, over Lakshadweep, Maldives, Comorin areas, over Gulf of Mannar.

***Red color warning does not mean "Red Alert" Red color warning means "Take Action"**

Forecast and warning for any day is valid from 0830 hours IST of day till 0830 hours IST of next day

For more details kindly visit <https://mausam.imd.gov.in> or contact 011-2434-4599

(Service to the nation since 1875)



18 October (Day 3)

❖ **Heavy Rainfall** very likely at isolated places over Kerala & Mahe, Lakshadweep and Tamil Nadu Puducherry & Karaikal.

❖ **Thunderstorm accompanied with lightning & gusty winds(30-40kmph)** very likely at isolated places over Kerala & Mahe, Lakshadweep, Tamil Nadu Puducherry & Karaikal and Telangana.

❖ **Thunderstorm accompanied with Lightning** very likely at isolated places over Andhra Pradesh, Coastal Karnataka and South Interior Karnataka.

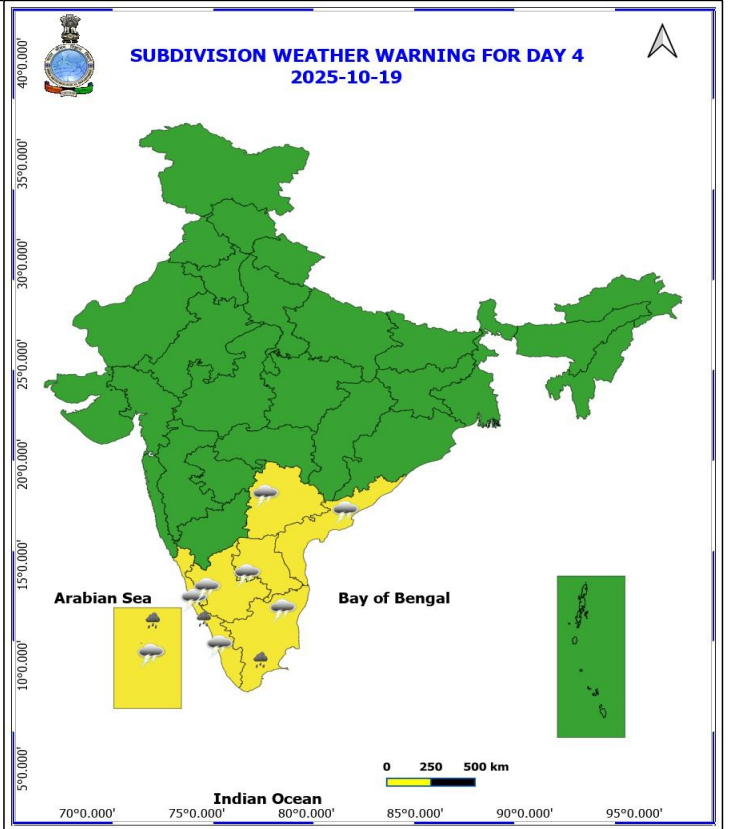
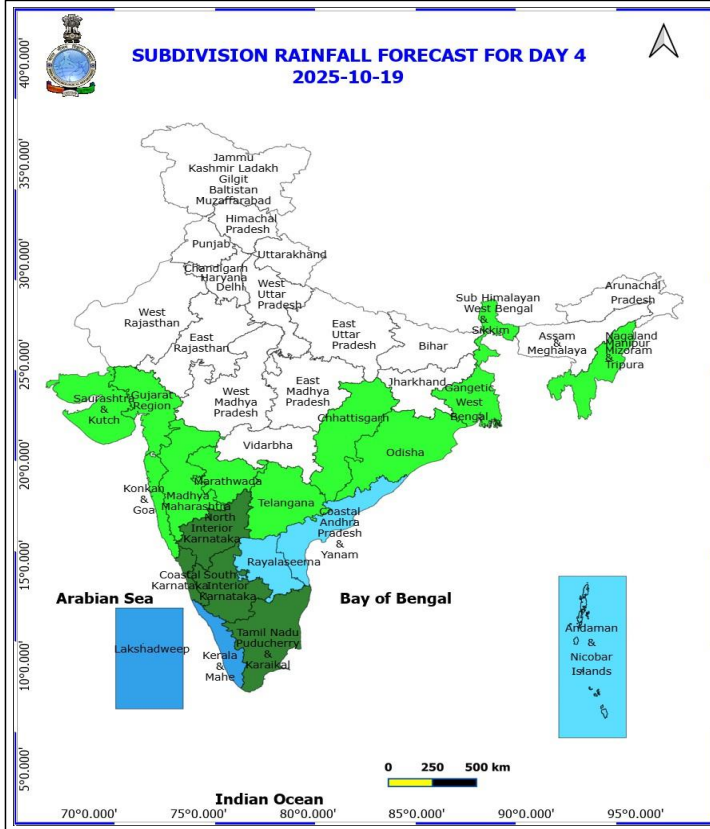
Squally weather with wind speed 35 kmph to 45 kmph gusting to 55 kmph likely to prevail along and off Tamil Nadu, South Andhra Pradesh, Kerala, Karnataka coasts and adjoining sea areas, over Lakshadweep, Comorin areas, Maldives, over many parts of southeast Arabian Sea, over Gulf of Mannar.

***Red color warning does not mean "Red Alert" Red color warning means "Take Action"**

Forecast and warning for any day is valid from 0830 hours IST of day till 0830 hours IST of next day

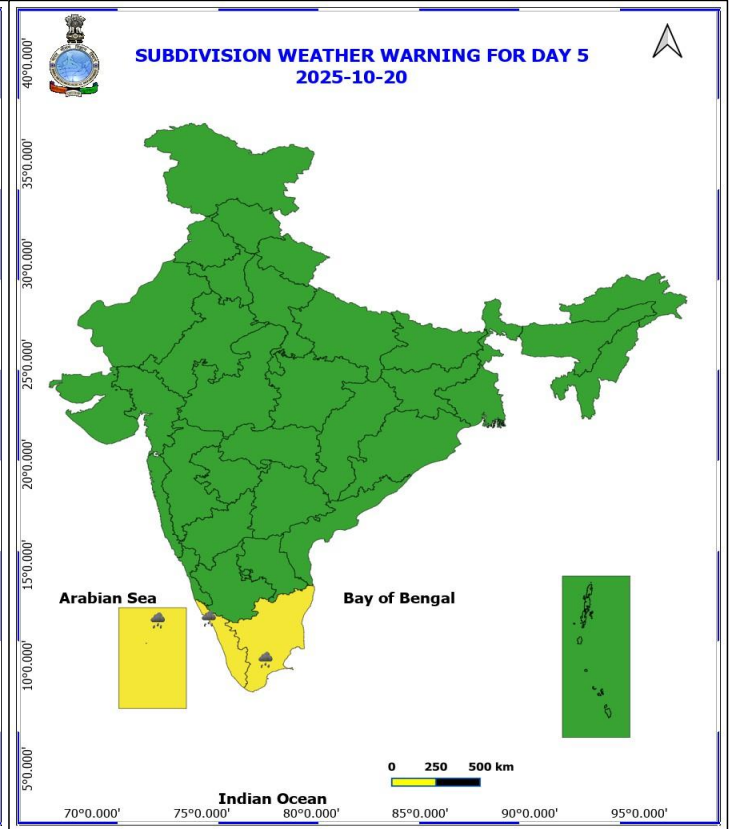
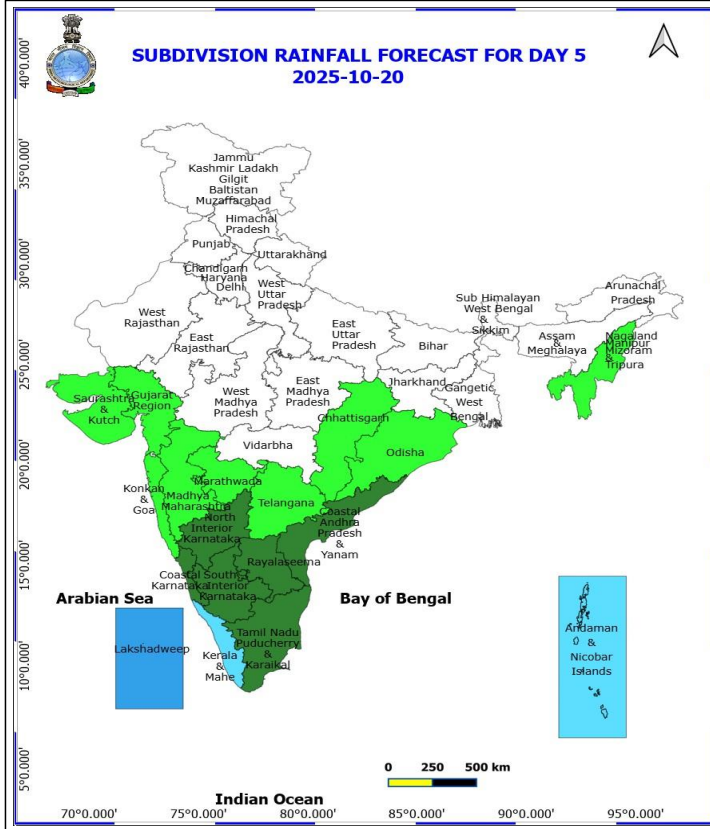
For more details kindly visit <https://mausam.imd.gov.in> or contact 011-2434-4599

(Service to the nation since 1875)



19 October (Day 4)

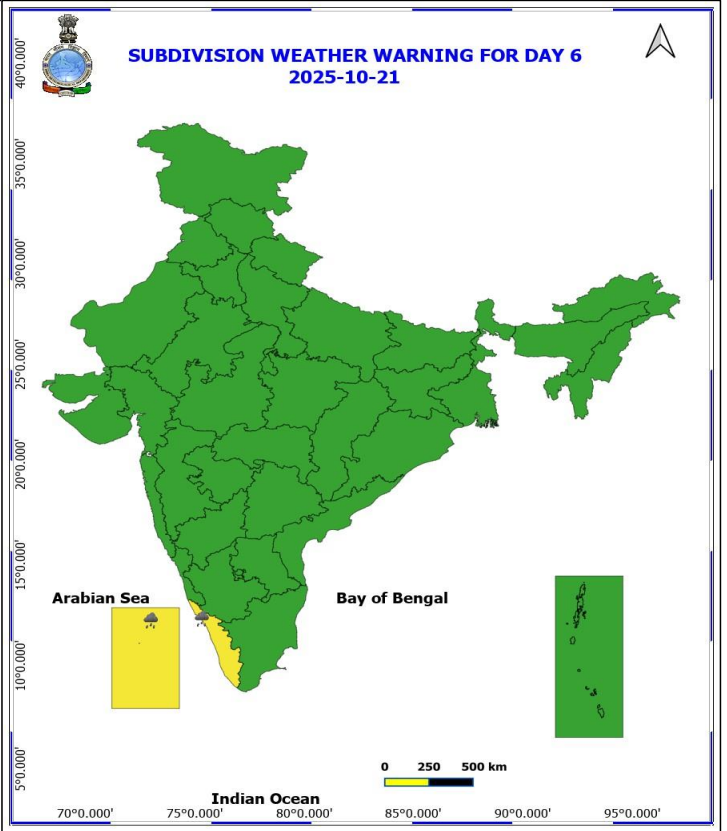
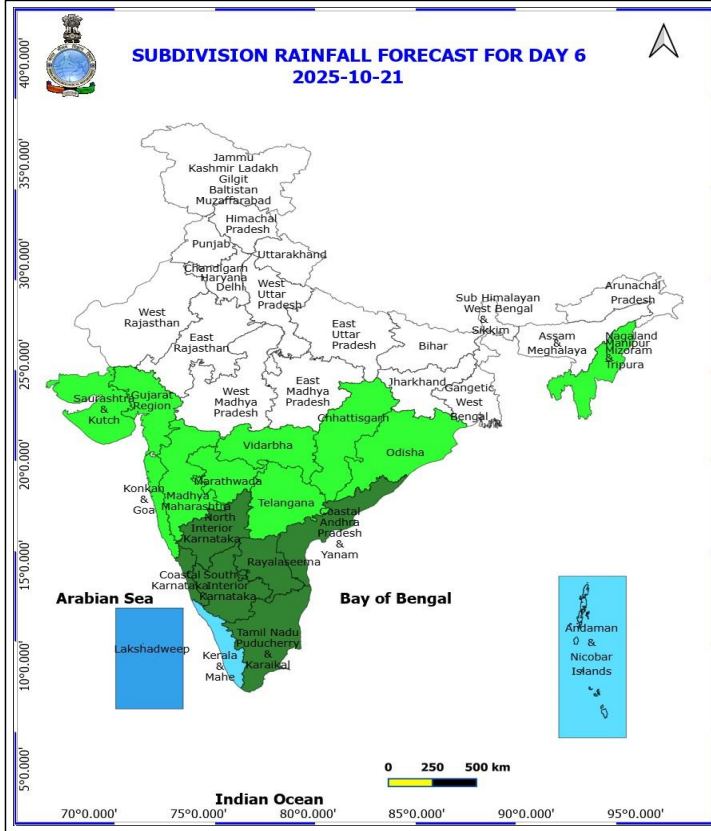
- ❖ **Heavy Rainfall** likely at isolated places over Kerala & Mahe, Lakshadweep and Tamil Nadu Puducherry & Karaikal.
 - ❖ **Thunderstorm accompanied with lightning & gusty winds(30-40kmph)** likely at isolated places over Kerala & Mahe, Lakshadweep, Tamil Nadu Puducherry & Karaikal and Telangana.
 - ❖ **Thunderstorm accompanied with Lightning** likely at isolated places over Andhra Pradesh, Coastal Karnataka and South Interior Karnataka.
- Squally weather with wind speed 35 kmph to 45kmph gusting to 55 kmph** likely to prevail along and off Kerala, Karnataka coasts and adjoining sea areas, over Lakshadweep, Comorin areas, Maldives, over many parts of southeast Arabian Sea, over Gulf of Mannar.



20 October (Day 5)

❖ **Heavy Rainfall** likely at isolated places over Kerala & Mahe, Lakshadweep and Tamil Nadu Puducherry & Karaikal.

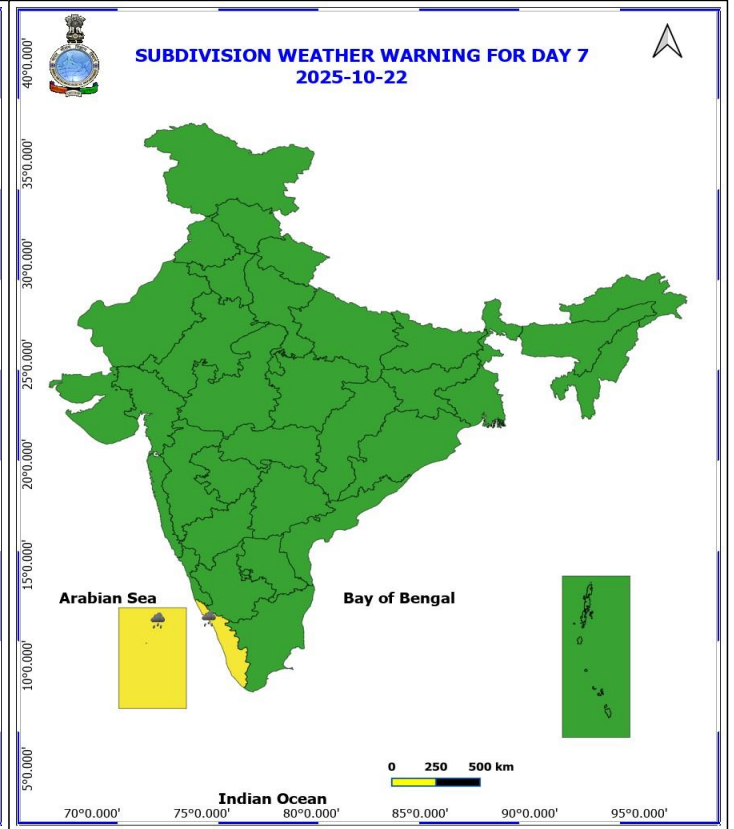
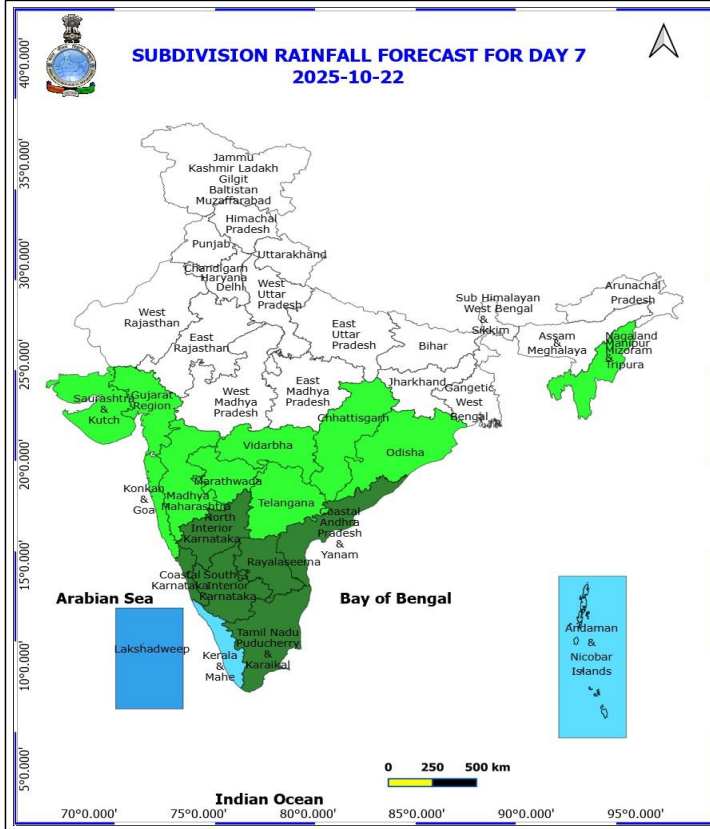
No Fishermen Warning



21 October (Day 6)

❖ **Heavy Rainfall** likely at isolated places over Kerala & Mahe and Lakshadweep.

No Fishermen Warning



22 October (Day 7)

❖ **Heavy Rainfall** likely at isolated places over Kerala & Mahe, Lakshadweep and Tamil Nadu Puducherry & Karaikal.

No Fishermen Warning



Table-1

7 Days Rainfall Forecast

S.No.	Subdivision	16- Oct	17- Oct	18- Oct	19- Oct	20- Oct	21- Oct	22- Oct
		Day 1	Day 2	Day 3	Day 4	Day 5	Day 6	Day 7
1	ANDAMAN & NICOBAR ISLANDS	SCT	SCT	FWS	FWS	FWS	FWS	FWS
2	ARUNACHAL PRADESH	DRY	DRY	DRY	DRY	DRY	DRY	DRY
3	ASSAM & MEHGHALAYA	ISOL	ISOL	ISOL	DRY	DRY	DRY	DRY
4	N. M. M. & T.	ISOL	ISOL	ISOL	ISOL	ISOL	ISOL	ISOL
5	S.H. WEST BENGAL & SIKKIM	DRY	DRY	ISOL	ISOL	DRY	DRY	DRY
6	GANGETIC WEST BENGAL	DRY	DRY	ISOL	ISOL	DRY	DRY	DRY
7	ODISHA	ISOL	DRY	DRY	ISOL	ISOL	ISOL	ISOL
8	JHARKHAND	DRY	DRY	DRY	DRY	DRY	DRY	DRY
9	BIHAR	DRY	DRY	DRY	DRY	DRY	DRY	DRY
10	EAST UTTAR PRADESH	DRY	DRY	DRY	DRY	DRY	DRY	DRY
11	WEST UTTAR PRADESH	DRY	DRY	DRY	DRY	DRY	DRY	DRY
12	UTTARAKHAND	ISOL	ISOL	DRY	DRY	DRY	DRY	DRY
13	HARYANA, CHD & DELHI	DRY	DRY	DRY	DRY	DRY	DRY	DRY
14	PUNJAB	DRY	DRY	DRY	DRY	DRY	DRY	DRY
15	HIMACHAL PRADESH	DRY	DRY	DRY	DRY	DRY	DRY	DRY
16	JAMMU AND KASHMIR AND LADAKH	DRY	DRY	DRY	DRY	DRY	DRY	DRY
17	WEST RAJASTHAN	DRY	DRY	DRY	DRY	DRY	DRY	DRY
18	EAST RAJASTHAN	DRY	DRY	DRY	DRY	DRY	DRY	DRY
19	WEST MADHYA PRADESH	ISOL	ISOL	ISOL	DRY	DRY	DRY	DRY
20	EAST MADHYA PRADESH	ISOL	ISOL	DRY	DRY	DRY	DRY	DRY
21	GUJRAT REGION	ISOL	ISOL	ISOL	ISOL	ISOL	ISOL	ISOL
22	SAURASHTRA & KUTCH	DRY	ISOL	ISOL	ISOL	ISOL	ISOL	ISOL
23	KONKAN & GOA	ISOL	ISOL	ISOL	ISOL	ISOL	ISOL	ISOL
24	MADHYA MAHARASHTRA	ISOL	ISOL	ISOL	ISOL	ISOL	ISOL	ISOL
25	MARATHWADA	ISOL	ISOL	ISOL	ISOL	ISOL	ISOL	ISOL
26	VIDARBHA	ISOL	DRY	DRY	DRY	DRY	ISOL	ISOL
27	CHATTISGARH	ISOL	ISOL	ISOL	ISOL	ISOL	ISOL	ISOL
28	COASTAL ANDHRA PRADESH	FWS	FWS	FWS	FWS	SCT	SCT	SCT
29	TELANGANA	ISOL	ISOL	ISOL	ISOL	ISOL	ISOL	ISOL
30	RAYALASEEMA	FWS	FWS	FWS	FWS	SCT	SCT	SCT
31	TAMILNADU & PUDUCHERRY	WS	FWS	FWS	SCT	SCT	SCT	SCT
32	COSTAL KARNATAKA	FWS	SCT	SCT	SCT	SCT	SCT	SCT
33	NORTH INTERIOR KARNATAKA	ISOL	ISOL	ISOL	SCT	SCT	SCT	SCT
34	SOUTH INTERIOR KARNATAKA	FWS	SCT	SCT	SCT	SCT	SCT	SCT
35	KERALA	WS	WS	WS	WS	FWS	FWS	FWS
36	LAKSHDWEEP	WS	WS	WS	WS	WS	WS	WS

Legend	Category	%Stations
WS	Widespread/Most Places	76-100
FWS	Fairly Widespread/Many Places	51-75
SCT	Scattered/ A Few Places	26-50
ISOL	Isolated Places	1-25
DRY	No Rain	0

***Red color warning does not mean "Red Alert" Red color warning means "Take Action"**
Forecast and warning for any day is valid from 0830 hours IST of day till 0830 hours IST of next day
For more details kindly visit <https://mausam.imd.gov.in> or contact 011-2434-4599

(Service to the nation since 1875)

Fig. 1: Maximum Temperatures Dated 2025-10-15

Fig. 2: Departure of Maximum Temp. Dated 2025-10-15

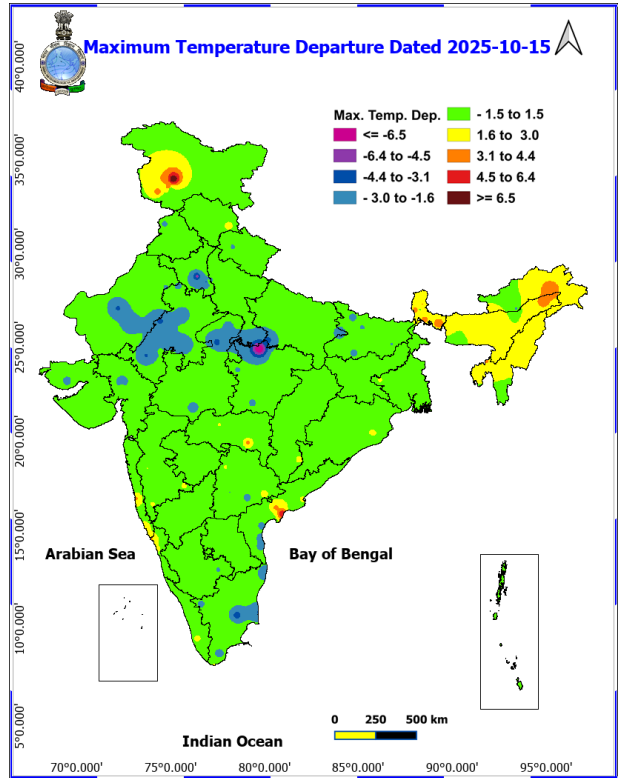
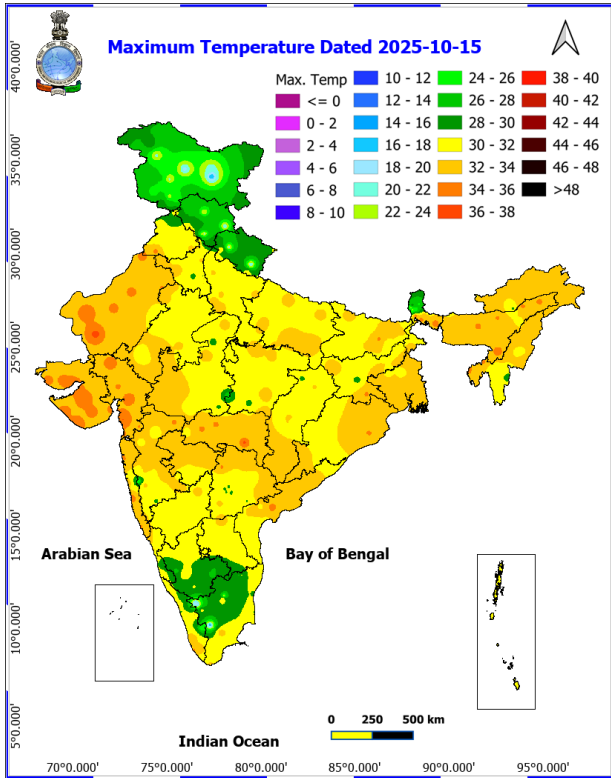
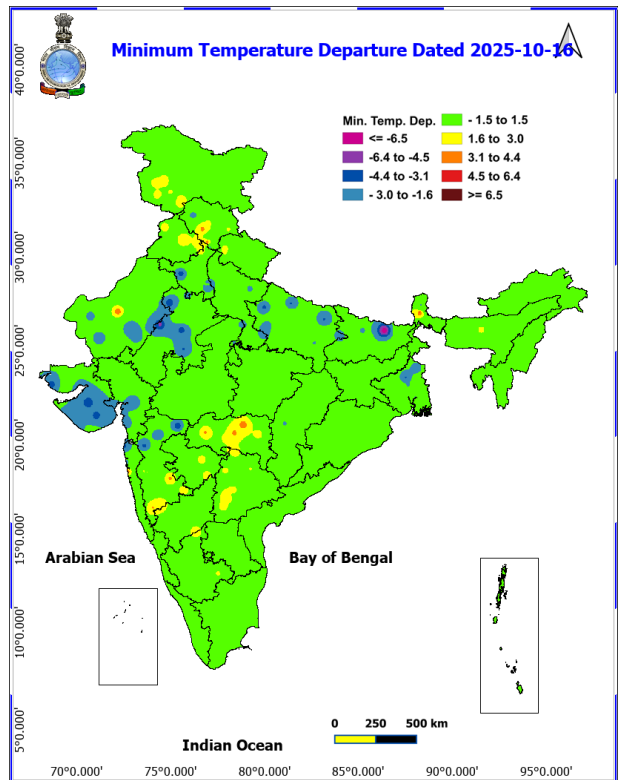
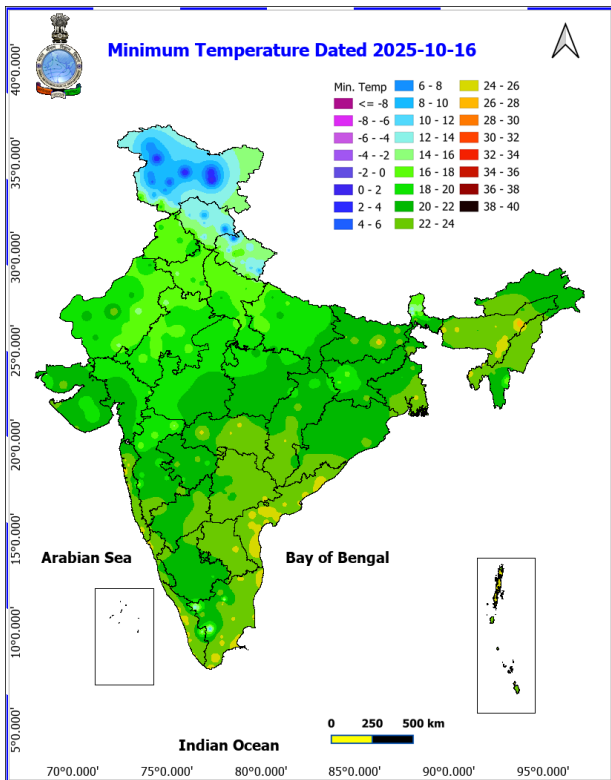


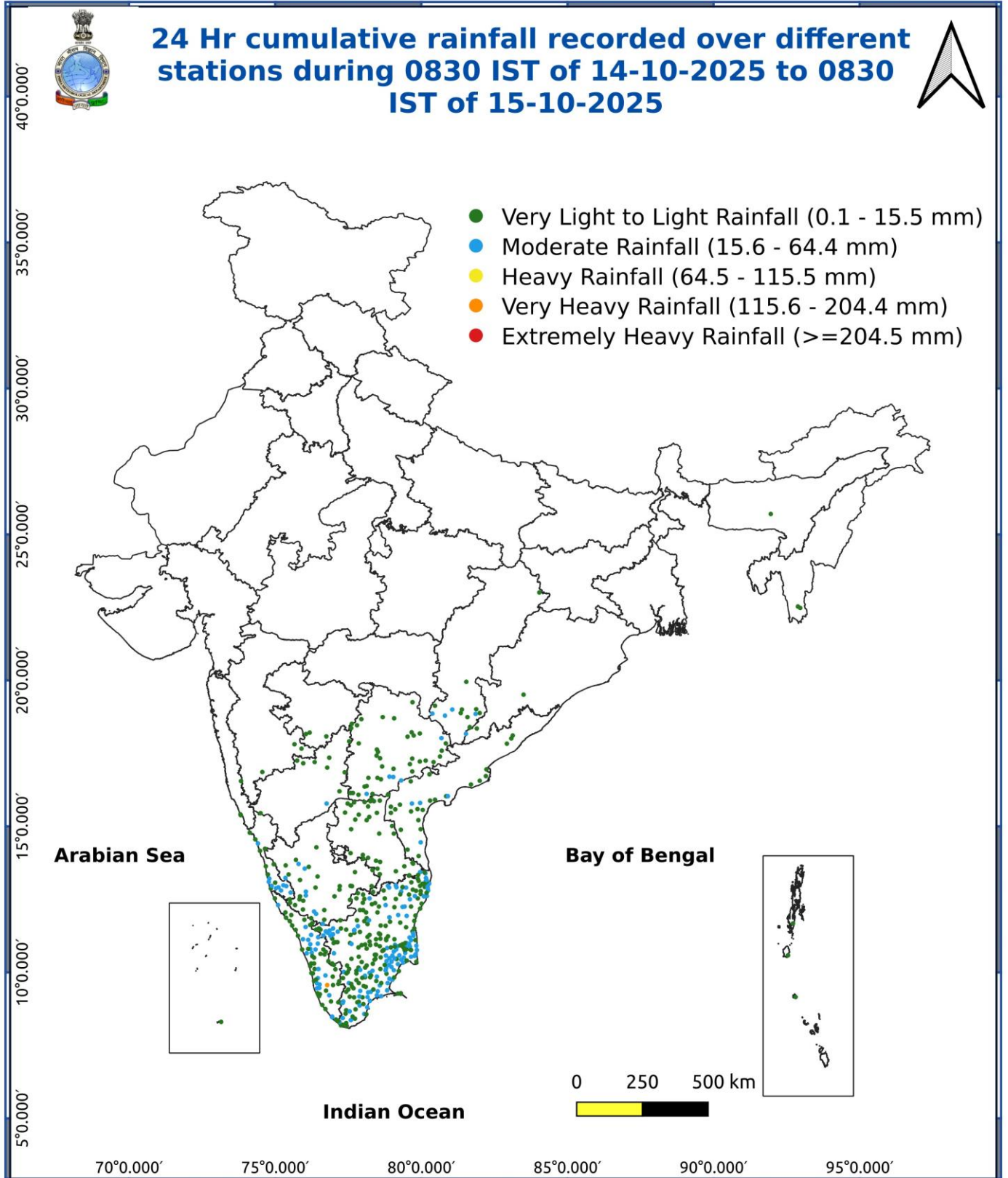
Fig. 3: Minimum Temperatures Dated 2025-10-15

Fig. 4: Departure of Minimum Temp. Dated 2025-10-15



***Red color warning does not mean "Red Alert" Red color warning means "Take Action"**
Forecast and warning for any day is valid from 0830 hours IST of day till 0830 hours IST of next day
For more details kindly visit <https://mausam.imd.gov.in> or contact 011-2434-4599

(Service to the nation since 1875)



Impact & Action Suggested due to

- ♦ **Very heavy rainfall** over Tamil Nadu and Kerala & Mahe on 16th & 17th October.

Impact Expected

- ♦ Localized Flooding of roads, water logging in low lying areas and closure of underpasses mainly in urban areas of the above region.
- ♦ Occasional reduction in visibility due to heavy rainfall.
- ♦ Disruption of traffic in major cities due to water logging in roads leading to increased travel time.
- ♦ Minor damage to kutcha roads.
- ♦ Possibilities of damage to vulnerable structure.
- ♦ Localized Landslides/Mudslides/landslips/mudslips/landsinks/mudsinks.
- ♦ Damage to horticulture and standing crops in some areas due to inundation.
- ♦ It may lead to riverine flooding in some river catchments mainly over Bihar, Jharkhand and West Bengal (for riverine flooding please visit Web page of CWC)

Action Suggested

- ♦ Check for traffic congestion on your route before leaving for your destination.
- ♦ Follow any traffic advisories that are issued in this regard.
- ♦ Avoid going to areas that face the water logging problems often.
- ♦ Avoid staying in vulnerable structure.

Agromet advisories for various parts of the country

Agromet advisories for likely impact of Heavy Rainfall

- ♦ In **Tamil Nadu**, store the harvested produce of rice and groundnut in safer places. Provide adequate drainage facilities in fields of rice, cotton, turmeric, garlic, ginger and vegetables and plantations of coconut, banana and black pepper to avoid water stagnation.
- ♦ In **Kerala**, make provision to drain out excess water from fields of rice and plantations of banana, coconut, arecanut and black pepper.
- ♦ In **Coastal Karnataka**, undertake harvesting of arecanut and cocnut and keep the harvested produce at safer places. In **South Interior Karnataka**, keep the harvested produce of groundnut, maize pepper, cardamom, turmeric and coffee to dry, covered and ventilated areas or cover with tarpaulins in the fields. Make necessary arrangements to drain out excess water from fields of rice, maize, finger millet, pigeon pea, soybean, groundnut and vegetables and plantations of banana, black pepper, coconut and arecanut to avoid waterlogging.
- ♦ In **Coastal Andhra Pradesh**, provide adequate drainage facilities in fields of rice, maize, pigeon pea, black gram, green gram, groundnut, turmeric, ginger, vegetables and plantations of coconut, arecanut, banana, coffee and black pepper.
- ♦ In **Rayalseema**, maintain proper drainage in fields of rice, groundnut, cotton, turmeric and vegetables.

Livestock / Fishery

- ♦ Keep the animals inside the shed during heavy rainfall and provide them balanced feed.
- ♦ Store feed and fodder in a safe place to prevent spoilage.
- ♦ Construct an outlet with proper netting around the ponds to drain out excess water, thereby preventing fish from escaping in case of overflow.

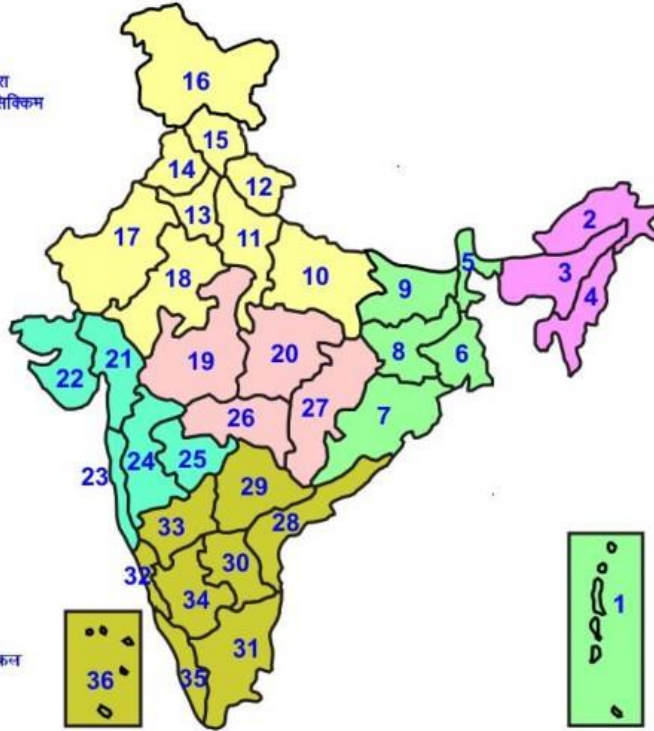


Agromet advisories for likely impact of Thunderstorm / Gusty Winds / Squally Winds

- Provide mechanical support to horticultural crops and staking or support to vegetables and young fruit plants / fruit-bearing plants to avoid lodging due to strong winds.
- Tie the harvested crops properly and cover them to minimise the risk of displacement due to strong surface winds.

LEGENDS

- 1 अंडमान और निकोबार द्वीप समुह
- 2 अरुणाचल प्रदेश
- 3 असम और मेघालय
- 4 नागालैंड मनीपुर मीजोरम और त्रिपुरा
- 5 उप हिमालय पश्चिम बंगाल एवं सिक्किम
- 6 पश्चिम बंगाल
- 7 ओडिसा
- 8 झारखंड
- 9 बिहार
- 10 पूर्वी उत्तर प्रदेश
- 11 पश्चिम उत्तर प्रदेश
- 12 उत्तराखंड
- 13 हरियाणा चंडिगढ़ एवं दिल्ली
- 14 पंजाब
- 15 हिमाचल प्रदेश
- 16 जम्मू एवं कश्मीर एवं लद्दाख
- 17 पश्चिम राजस्थान
- 18 पूर्वी राजस्थान
- 19 पश्चिम मध्य प्रदेश
- 20 पूर्वी मध्य प्रदेश
- 21 गुजरात क्षेत्र
- 22 सौराष्ट्र एवं कच्छ
- 23 कोंकण एवं गोवा
- 24 मध्य महाराष्ट्र
- 25 मराठावाडा
- 26 विदर्भ
- 27 छत्तीसगढ़
- 28 तटीय आंध्र प्रदेश एवं यनम
- 29 तेलंगाना
- 30 रायलसीमा
- 31 तमिलनाडु, पुदुचेरी एवं कराईकल
- 32 तटिय कर्नाटक
- 33 आंतरिक उत्तरी कर्नाटक
- 34 आंतरिक दक्षिणी कर्नाटक
- 35 केरल एवं माहे
- 36 लक्षद्वीप



1. Andaman & Nicobar Islands
2. Arunachal Pradesh
3. Assam & Meghalaya
4. Nagaland, Manipur, Mizoram & Tripura
5. Sub-Himalayan West Bengal & Sikkim
6. Gangetic West Bengal
7. Orissa
8. Jharkhand
9. Bihar
10. East Uttar Pradesh
11. West Uttar Pradesh
12. Uttarakhand
13. Haryana, Chd & Delhi
14. Punjab
15. Himachal Pradesh
16. Jammu & Kashmir and Ladakh
17. West Rajasthan
18. East Rajasthan
19. West Madhya Pradesh
20. East Madhya Pradesh
21. Gujarat
22. Saurashtra
23. Konkan & Goa
24. Madhya Maharashtra
25. Marathwada
26. Vidharbha
27. Chhattisgarh
28. Coastal Andhra Pradesh & Yanam
29. Telangana
30. Rayalaseema
31. Tamilnadu, Puducherry & Karaikal
32. Coastal Karnataka
33. North Interior Karnataka
34. South Interior Karnataka
35. Kerala & Mahe
36. Lakshadweep

SPATIAL DISTRIBUTION (% of Stations reporting)

% Stations	Category	% Stations	Category
76-100	Widespread (WS/Most Places)	26-50	Scattered (SCT/ A Few Places)
51-75	Fairly Widespread (FWS/ Many Places)	1-25	Isolated (ISOL)

Subdivision Colour

- NO WARNING
- WATCH (BE UPDATED)
- ALERT (BE PREPARED TO TAKE ACTION)
- WARNING (TAKE ACTION)

Probabilistic Forecast

Terms	Probability of Occurrence (%)
Unlikely	< 25
Likely	25 - 50
Very Likely	50 - 75
Most Likely	> 75

- | | | | |
|--------------------------|-----------------|----------------------|--------------------|
| Heavy Rain | Very Heavy Rain | Extremely Heavy Rain | Heavy Snow |
| Thunderstorm & Lightning | Hailstorm | Dust Storm | Dust Raising Winds |
| Strong surface winds | Heat Wave | Hot Day | Warm Night |
| Cold Wave | Cold Day | Ground Frost | Fog |
| Hot & Humid | | | |

*Red color warning does not mean "Red Alert" Red color warning means "Take Action"

Forecast and warning for any day is valid from 0830 hours IST of day till 0830 hours IST of next day

For more details kindly visit <https://mausam.imd.gov.in> or contact 011-2434-4599

(Service to the nation since 1875)

LEGENDS

WARNING

WARNING (TAKE ACTION)
ALERT (BE PREPARED)
WATCH (BE UPDATED)
NO WARNING (NO ACTION)

Probabilistic Forecast

Terms	Probability of Occurrence (%)
Unlikely	< 25
Likely	25 - 50
Very Likely	50 - 75
Most Likely	> 75



Heavy: 64.5 to 115.5 mm/cm *
Very Heavy: 115.6 to 204.4 mm/cm*
Extremely Heavy: > 204.4 mm/cm *



When maximum temperature of a station reaches $\geq 40^{\circ}\text{C}$ for plains and $\geq 30^{\circ}\text{C}$ for hilly regions
(a) Based on Departure from normal

Heat Wave: Maximum Temperature Departure from normal 4.5°C to 6.4°C .
Severe Heat Wave: Maximum Temperature Departure from normal $\geq 6.5^{\circ}\text{C}$

(b). Based on Actual maximum temperature

Heat Wave: When actual maximum temperature $\geq 45^{\circ}\text{C}$.
Severe Heat Wave: When actual maximum temperature $\geq 47^{\circ}\text{C}$

(c). Criteria for heat wave for coastal stations

When maximum temperature departure is $> 4.5^{\circ}\text{C}$ from normal. Heat Wave may be described provided maximum temperature $\geq 37^{\circ}\text{C}$



When maximum temperature remains 40°C

Warm Night: When minimum temperature departure 4.5°C to 6.4°C .
Severe Warm Night: When minimum temperature departure $> 6.4^{\circ}\text{C}$.



When minimum temperature of a station $\leq 10^{\circ}\text{C}$ for plains and $\leq 0^{\circ}\text{C}$ for hilly regions.

(a). Based on departure

Cold Wave: Minimum Temperature Departure from normal -4.5°C to -6.4°C .
Severe Cold Wave: Minimum Temperature Departure from normal $\leq -6.5^{\circ}\text{C}$

(b) Based on actual Minimum Temperature (for Plains only)

Cold Wave : When Minimum Temperature is $\leq 4.0^{\circ}\text{C}$
Severe Cold Wave: When Minimum Temperature is $\leq 2.0^{\circ}\text{C}$

(c) For Coastal Stations

When Minimum Temperature departure is $\leq -4.5^{\circ}\text{C}$ & actual Minimum Temperature is $\leq 15^{\circ}\text{C}$



When minimum temperature of a station $\leq 10^{\circ}\text{C}$ for plains and $\leq 0^{\circ}\text{C}$ for hilly regions
Based on departure

Cold Day: Maximum Temperature Departure from normal -4.5°C to -6.4°C .
Severe Cold Day: Maximum Temperature Departure from normal $\leq -6.5^{\circ}\text{C}$



Phenomenon of small droplets suspended in air and the horizontal visibility $< 1\text{km}$

Moderate Fog: When the visibility between 500-200 metres
Dense Fog: when the visibility between 50- 200 metres
Very Dense Fog: when the visibility < 50 metres



Sudden electrical discharges manifested by a flash of light (Lightning) and a sharp rumbling sound (thunder)



An ensemble of particles of dust or sand energetically lifted to great heights by a strong and turbulent wind.



Ice deposits on ground

Air temperature $\leq 4^{\circ}\text{C}$ (over Plains)



A strong wind that rises suddenly, lasts for atleast 1 minute.

Moderate: Wind speed 52-61 kmph
Severe: Wind speed 62-87 kmph
Very Severe: Wind speed > 87 kmph



Effect of various waves in the sea over specific area

Rough to very rough: Wind speed 41-62 kmph (22-33 knots) & Wave height 2.5-6 metre
High to very high: Wind speed 63-117 kmph (34-63 knots) & Wave height 6-14 metre
Phenomenal: Wind speed > 117 kmph (> 63 knots) & Wave height > 14 metre



Cyclonic Storm: Wind speed 62-87 kmph (34-47 knots)

Severe Cyclonic Storm: Wind speed 88-117 kmph (48-63 knots)
Very Severe Cyclonic Storm: Wind speed 118-165 kmph (64 - 89 knots)
Extremely Severe Cyclonic Storm: Wind speed 166-220 kmph (90 -119 knots)
Super Cyclone Storm: Wind speed > 220 kmph (> 119 knots)

*Red color warning does not mean "Red Alert" Red color warning means "Take Action"

Forecast and warning for any day is valid from 0830 hours IST of day till 0830 hours IST of next day

For more details kindly visit <https://mausam.imd.gov.in> or contact 011-2434-4599

(Service to the nation since 1875)