

2025-06-24

Time of Issue: 08:40:00 hours IST  
(Morning)

## ALL INDIA WEATHER SUMMARY AND FORECAST BULLETIN

### Significant Weather Features

#### Weather Systems, Forecast and Warnings:

##### East & Central India:

- ♦ **Extremely heavy rainfall (>20 cm/24 hours) likely at isolated places over West Madhya Pradesh on 24<sup>th</sup> June.**
- ♦ Isolated **heavy to very heavy rainfall** also likely to continue over Madhya Pradesh during 24<sup>th</sup>-27<sup>th</sup> June.
- ♦ Isolated **heavy rainfall** over Bihar, Jharkhand, Odisha, Chhattisgarh during 24<sup>th</sup>-27<sup>th</sup>, Vidarbha on 25<sup>th</sup> & 26<sup>th</sup>, West Bengal & Sikkim during 24<sup>th</sup>-27<sup>th</sup>, with **very heavy rainfall** over Bihar on 24<sup>th</sup>; Vidarbha on 24<sup>th</sup>; Jharkhand on 26<sup>th</sup>, Odisha on 25<sup>th</sup> & 26<sup>th</sup> June.
- ♦ Light/moderate rainfall at most/many places accompanied with **thunderstorm, lightning & gusty winds speed reaching 40-50 kmph** likely over Andaman & Nicobar Islands; Madhya Pradesh, Vidarbha, Chhattisgarh, Gangetic West Bengal, Bihar, Jharkhand, Odisha during 24<sup>th</sup>-27<sup>th</sup> June.

##### West India:

- ♦ Isolated **heavy rainfall** likely over Konkan & Goa, Madhya Maharashtra, Gujarat state during 24<sup>th</sup>-29<sup>th</sup> June with **very heavy rainfall** over Konkan on 24<sup>th</sup> June.
- ♦ Light/moderate rainfall at most/many places likely over Gujarat State, Konkan & Goa, Madhya Maharashtra, Marathwada during 24<sup>th</sup>-29<sup>th</sup> June.

##### Northwest India:

- ♦ Isolated **heavy rainfall** likely over Jammu-Kashmir-Ladakh-Gilgit-Baltistan-Muzaffarabad, Punjab, Haryana during 25<sup>th</sup>- 27<sup>th</sup>; Himachal Pradesh, Uttarakhand, West Uttar Pradesh, East Rajasthan during 24<sup>th</sup>-29<sup>th</sup>; West Rajasthan on 24<sup>th</sup> & 25<sup>th</sup>; East Uttar Pradesh on 24<sup>th</sup>, 28<sup>th</sup> & 29<sup>th</sup> with **very heavy rainfall** over Himachal Pradesh, Uttarakhand during 24<sup>th</sup>-27<sup>th</sup>, East Rajasthan on 24<sup>th</sup>; Haryana, Punjab, West Uttar Pradesh on 25<sup>th</sup> & 26<sup>th</sup>, Jammu-Kashmir-Ladakh-Gilgit-Baltistan-Muzaffarabad on 25<sup>th</sup> June.
- ♦ Light/moderate rainfall at most/many places accompanied with accompanied with **thunderstorm, lightning & gusty winds speed reaching 30-40 kmph** likely over Northwest India during 24<sup>th</sup>-29<sup>th</sup> June.

##### Northeast India:

- ♦ Isolated **very heavy rainfall** likely over Arunachal Pradesh on 24<sup>th</sup> June.
- ♦ Light/moderate rainfall at many/most places accompanied with **thunderstorm, lightning and isolated heavy rainfall** likely to continue over Northeast India during next 7 days.

##### South Peninsular India:

- ♦ Isolated **heavy rainfall** likely over Kerala, Karnataka during 24<sup>th</sup>-27<sup>th</sup>; Coastal Andhra Pradesh & Yanam on 27<sup>th</sup> & 28<sup>th</sup> June.
- ♦ **Strong surface winds** (speed reaching 40-60 kmph) very likely over Karnataka, Coastal Andhra Pradesh & Yanam, Rayalaseema, Telangana, Kerala & Mahe, Lakshadweep during 24<sup>th</sup>-27<sup>th</sup> June.
- ♦ Light/moderate rainfall at many/some places over Kerala & Mahe, Lakshadweep, Coastal Karnataka; isolated to scattered rainfall accompanied with isolated **thunderstorm, lightning** over Coastal Andhra Pradesh & Yanam, Telangana, Interior Karnataka during 24<sup>th</sup>-27<sup>th</sup> June.

**\*Red color warning does not mean "Red Alert" Red color warning means "Take Action"**

Forecast and warning for any day is valid from 0830 hours IST of day till 0830 hours IST of next day

For more details kindly visit <https://mausam.imd.gov.in> or contact 011-2434-4599

(Service to the nation since 1875)

### Main Weather Observations:

- ❖ **Rainfall distribution** (from 0830 hours IST to 1730 hours IST of yesterday): **at most places** over Jharkhand, Arunachal Pradesh, North Interior Karnataka, Odisha, Nagaland, Manipur, Mizoram & Tripura and Coastal Karnataka; **at many places** over West Uttar Pradesh, Madhya Maharashtra, Himachal Pradesh, Sub-Himalayan West Bengal & Sikkim, East Madhya Pradesh, Gujarat Region, Uttarakhand, Saurashtra & Kutch, Jammu & Kashmir and Ladakh, Telangana, Vidarbha, Chhattisgarh, Konkan & Goa, Marathwada, Tamilnadu Puducherry & Karaikal, Bihar, Haryana Chandigarh & Delhi, West Rajasthan, Rayalaseema, Punjab, South Interior Karnataka, Kerala & Mahe, Coastal Andhra Pradesh & Yanam, Assam & Meghalaya, East Uttar Pradesh, Andaman & Nicobar Islands, Gangetic West Bengal, East Rajasthan and West Madhya Pradesh; **Dry** over rest of the country.
- ❖ **Significant rainfall recorded (in cm)** (from 0830 hours IST to 1730 hours IST of yesterday): **Konkan & Goa:** Dahanu (dist Palghar) 7, Ratnagiri (dist Ratnagiri) 2; **Gujarat Region:** Surat (dist Surat) 6, Vallabh Vidyanagar (dist Anand) 4; **West Madhya Pradesh:** Shivpuri (dist Shivpuri) 5, Khargone-obs (dist Khargone) 2; **East Rajasthan:** Jaipur (dist Jaipur) 5; **Gangetic west Bengal:** Diamond Harbour (dist South 24 Parganas) 4; **Jharkhand:** Ranchi AP (dist Ranchi) 4, Jamshedpur AP (dist East Singhbhum) 2; **Uttarakhand:** Mukteswar (kumaun) (dist Nainital) 4; **Himachal Pradesh:** Kangra (dist Kangra) 3, Mandi (dist Mandi) 2; **Coastal Karnataka:** Karwar (dist Uttara Kannada) 3; **Nagaland, Manipur, Mizoram & Tripura:** Kohima (dist Kohima) 3, Imphal (tulihal) AP (dist Imphal East), Kailashahar AP (dist Unakoti) 2 Each; East madhya pradesh: Nowgong-obs (dist Chhatarpur) 3, Narsinghpur (dist Narsinghpur) 2; **Madhya Maharashtra:** Mahabaleshwar (dist Satara) 2; **Saurashtra & Kutch:** Mahuva (dist Bhavnagar) 2; **Andaman & Nicobar islands:** Mayabandar (dist North And Middle Andaman) 2; **East Uttar Pradesh:** Gorakhpur (dist Gorakhpur) 2; West Uttar Pradesh: Agra (dist Agra) 2; **Assam & Meghalaya:** Barapani/shillong (dist East Khasi Hills), Golaghat (dist Golaghat) 2 Each; **Odisha:** Gopalpur (dist Ganjam) 2.
- ❖ **Heavy Rainfall observed** (from 0830 hours IST to 1730 hours IST of today): **Heavy rain** at isolated places over Konkan & Goa
- ❖ **Minimum Temperature Departures (as on 23-06-2025):** **markedly above normal(> 5.1°C)** at few places over Assam & Meghalaya; at isolated places over Sub Himalayan West Bengal & Sikkim, Bihar, West Uttar Pradesh, Himachal Pradesh, Jammu-KashmirLadakh-Gilgit-Baltistan-Muzaffarabad and Saurashtra & Kutch. **appreciably above normal(3.1°C to 5.0°C)** at few places over West Rajasthan and East Madhya Pradesh; at isolated places over Gangetic West Bengal, Odisha, West Madhya Pradesh and Gujarat Region. **above normal(1.6°C to 3.0°C)** at most places over Uttarakhand; at few places over Haryana-Chandigarh-Delhi and Lakshadweep; at isolated places over Nagaland, Manipur, Mizoram & Tripura, Punjab, Konkan & Goa, Madhya Maharashtra, Vidarbha, Coastal Andhra Pradesh & Yanam and Tamil Nadu, Puducherry & Karaikal. **near normal(-1.5°C to 1.5°C)** at many places over Andaman & Nicobar Islands, East Rajasthan, Chhattisgarh, Telangana and Kerala & Mahe; at most places over Marathwada, Rayalaseema, Coastal Karnataka, North Interior Karnataka and South Interior Karnataka; at few places over Arunachal Pradesh, Jharkhand and East Uttar Pradesh. **The lowest minimum temperature** of 18.4°C was reported at **Matheran (Maharashtra)**.
- ❖ **Maximum Temperature Departures (as on 23-06-2025):** **markedly above normal(> 5.1°C)** at few places over Jammu-KashmirLadakh-Gilgit-Baltistan-Muzaffarabad; at isolated places over Chhattisgarh. **appreciably above normal(3.1°C to 5.0°C)** at isolated places over Gangetic West Bengal and Himachal Pradesh. **above normal(1.6°C to 3.0°C)** at few places over Assam & Meghalaya; at isolated places over Sub Himalayan West Bengal & Sikkim and Konkan & Goa. **near normal(-1.5°C to 1.5°C)** at many places over Nagaland, Manipur, Mizoram & Tripura, Jharkhand and Kerala & Mahe; at most places over Coastal Karnataka and Lakshadweep; at few places over Andaman & Nicobar Islands, Arunachal Pradesh, Odisha, Bihar, Uttarakhand, Punjab, West Rajasthan, Madhya Maharashtra, Marathwada, Telangana, Tamil Nadu, Puducherry & Karaikal, North Interior Karnataka and South Interior Karnataka; at isolated places over East Uttar Pradesh, West Uttar Pradesh, Haryana-Chandigarh-Delhi and Saurashtra & Kutch. **The highest maximum temperature** of 42.6°C was reported at **Sri Ganganagar (West Rajasthan)**.

\*Red color warning does not mean "Red Alert" Red color warning means "Take Action"

Forecast and warning for any day is valid from 0830 hours IST of day till 0830 hours IST of next day

For more details kindly visit <https://mausam.imd.gov.in> or contact 011-2434-4599

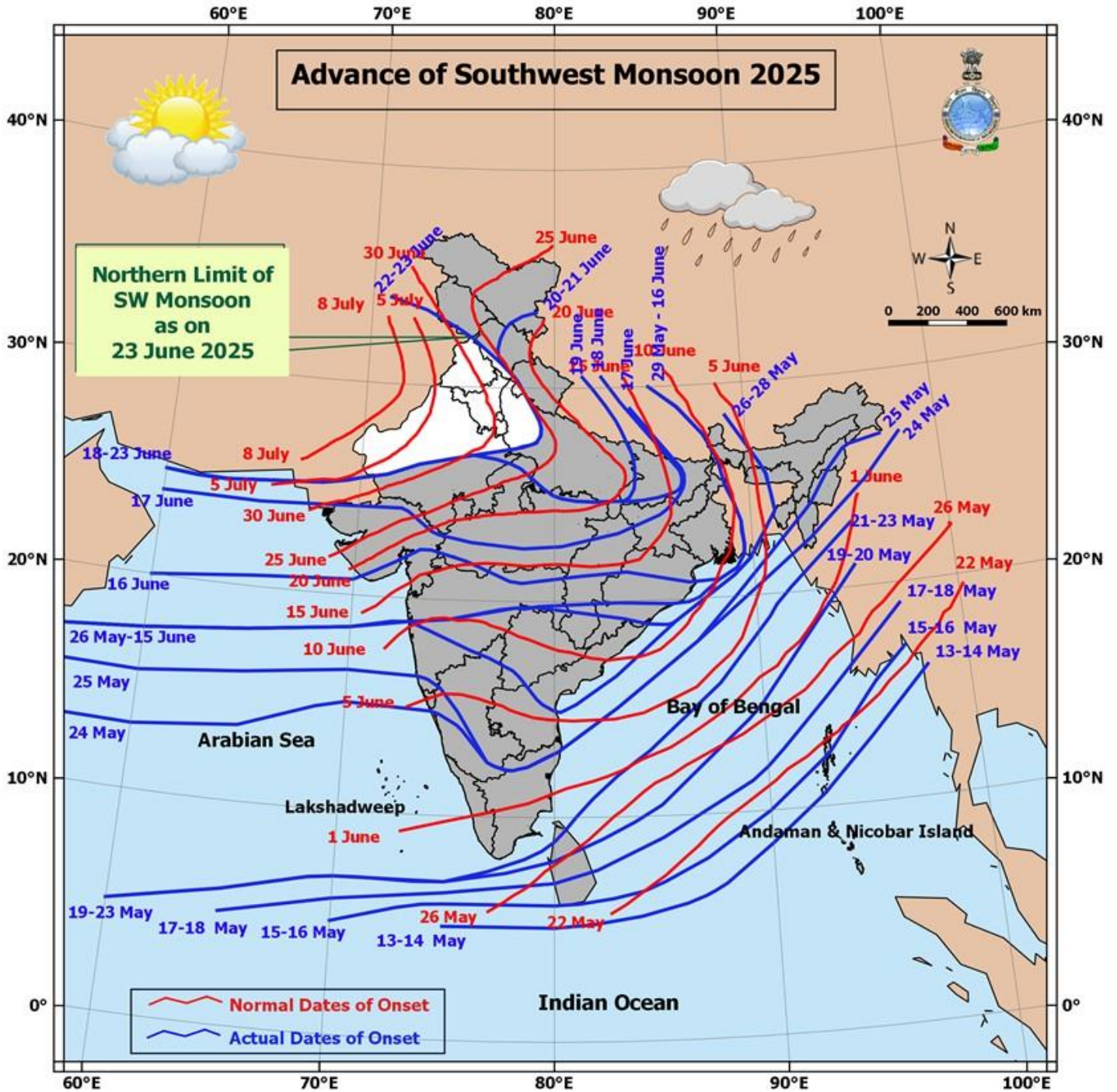
(Service to the nation since 1875)

### Meteorological Analysis (Based on 0530 hours IST)

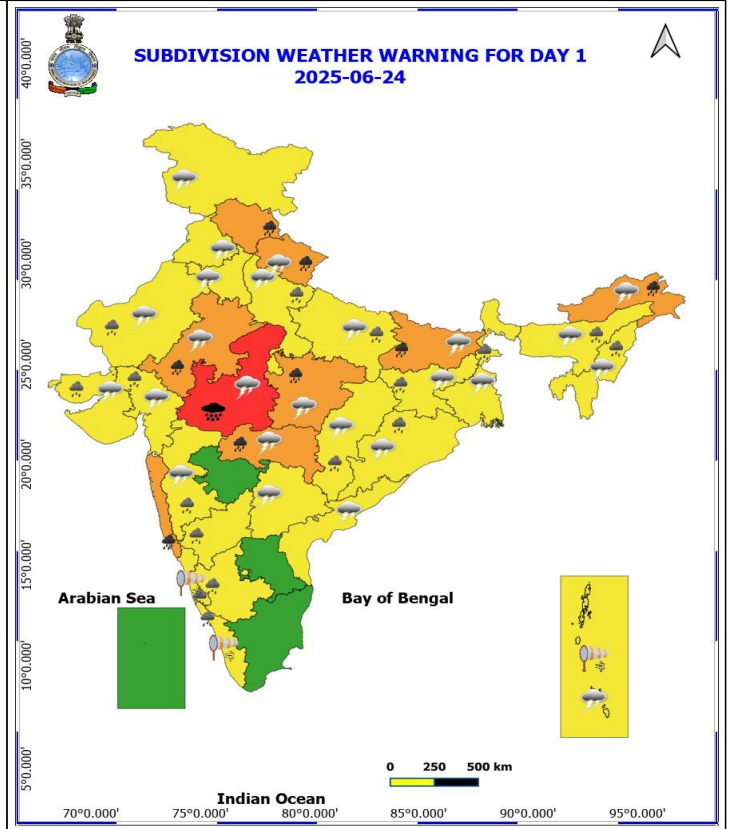
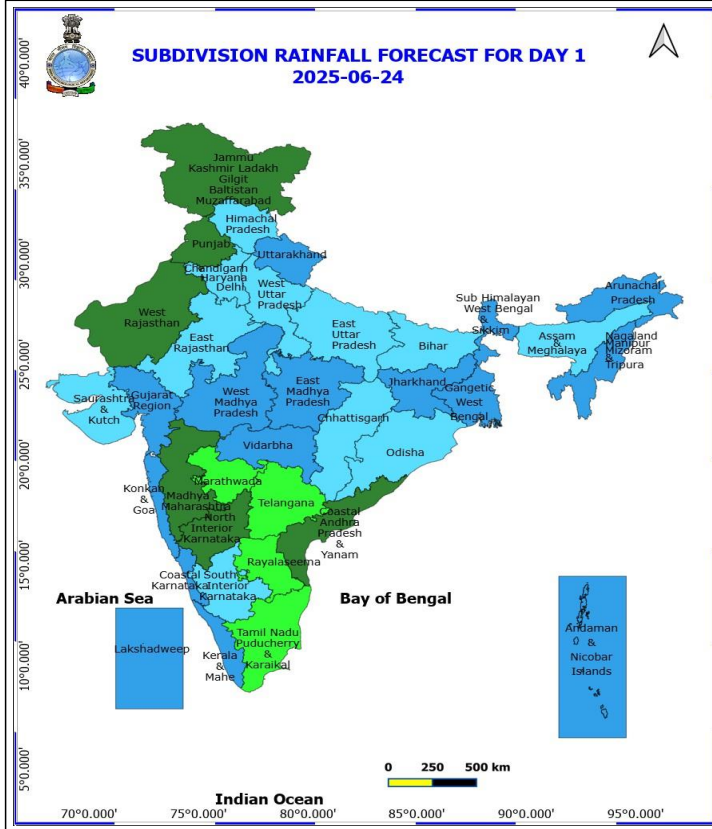
- ❖ The Northern Limit of Monsoon continues to pass through 25.0°N/60.0°E, 25.0°N/65.0°E, 25.5°N/70.0°E, Jaipur, Agra, Rampur, Dehradun, Shimla, Pathankot, Jammu, and 33.5°N/73.0°E and 34.0°N/71.0°E.
- ❖ Conditions are favourable for further advance of Southwest monsoon over remaining parts of North Arabian Sea, some more parts of Rajasthan, Punjab, some parts of Haryana, Chandigarh and Delhi, remaining parts of West Uttar Pradesh, Himachal Pradesh and remaining parts of Jammu during next 48 hours.
- ❖ The **upper air cyclonic circulation** over central parts of south Uttar Pradesh extending upto 5.8 km above mean sea level tilting southwards with height persists.
- ❖ The **trough** from above cyclonic circulation over central parts of south Uttar Pradesh to northwest Bay of Bengal across northeast Madhya Pradesh, Jharkhand & north Odisha extending upto 1.5 km above mean sea level persists.
- ❖ The **upper air cyclonic circulation** over Saurashtra & Kutch persists and now seen between 3.1 & 5.8 km above mean sea level.
- ❖ The **upper air cyclonic circulation** over northeast Assam & neighbourhood persists and now extends upto 0.9 km above mean sea level.
- ❖ The **upper air cyclonic circulation** over westcentral and adjoining northwest Bay of Bengal off north Coastal Andhra Pradesh & south Odisha coast between 5.8 & 7.6 km above mean sea level tilting southwards with height persists.
- ❖ The **trough** roughly along Long. 87°E to the north of Lat. 21°N at 3.1 km above mean sea level has become less marked.

### Weather Outlook for subsequent 3 days

- ◆ Scattered to fairly widespread rainfall very likely over central India, ghat area of western coast, eastern India & northwest India.
- ◆ Isolated to scattered rainfall very likely over the south peninsula India & western India.



\*Red color warning does not mean "Red Alert" Red color warning means "Take Action"  
Forecast and warning for any day is valid from 0830 hours IST of day till 0830 hours IST of next day  
For more details kindly visit <https://mausam.imd.gov.in> or contact 011-2434-4599  
(Service to the nation since 1875)



## 24 June (Day 1)

- ❖ **Heavy to Very Heavy Rainfall with isolated Extremely Heavy Rainfall** very likely at isolated places over West Madhya Pradesh.
- ❖ **Heavy to Very Heavy Rainfall** very likely at isolated places over Arunachal Pradesh, Bihar, East Madhya Pradesh, East Rajasthan, Himachal Pradesh, Konkan & Goa, Uttarakhand and Vidarbha.
- ❖ **Heavy Rainfall** very likely at isolated places over Assam & Meghalaya, Chhattisgarh, Coastal Karnataka, Gujarat State, Interior Karnataka, Jharkhand, Kerala & Mahe, Madhya Maharashtra, Nagaland, Manipur, Mizoram and Tripura, Odisha, Sub Himalayan West Bengal & Sikkim, Uttar Pradesh and West Rajasthan.
- ❖ **Thunderstorm accompanied with lightning & gusty winds(40-50kmph)** very likely at isolated places over Jammu-Kashmir-Ladakh-Gilgit-Baltistan-Muzaffarabad, Jharkhand and Uttarakhand.
- ❖ **Thunderstorm accompanied with lightning & gusty winds(30-40kmph)** very likely at isolated places over Andaman & Nicobar Islands, Bihar, Gangetic West Bengal, Gujarat State, Madhya Maharashtra, Odisha, Telangana, West Madhya Pradesh and West Rajasthan.
- ❖ **Thunderstorm accompanied with Lightning** very likely at isolated places over Arunachal Pradesh, Assam & Meghalaya, Chhattisgarh, Coastal Andhra Pradesh, East Madhya Pradesh, East Rajasthan, Haryana, Chandigarh & Delhi, Nagaland, Manipur, Mizoram and Tripura, Punjab, Uttar Pradesh and Vidarbha.
- ❖ **Strong Surface Winds** very likely at isolated places over Andaman & Nicobar Islands, Coastal Karnataka and Kerala & Mahe.
- ❖ **Squally wind speed reaching 45 kmph to 55 kmph gusting to 65 kmph** is likely to prevail along and off Somalia, Oman & adjoining Yemen coasts, most parts of westcentral Arabian Sea & adjoining, some parts of

**\*Red color warning does not mean "Red Alert" Red color warning means "Take Action"**

Forecast and warning for any day is valid from 0830 hours IST of day till 0830 hours IST of next day

For more details kindly visit <https://mausam.imd.gov.in> or contact 011-2434-4599

(Service to the nation since 1875)

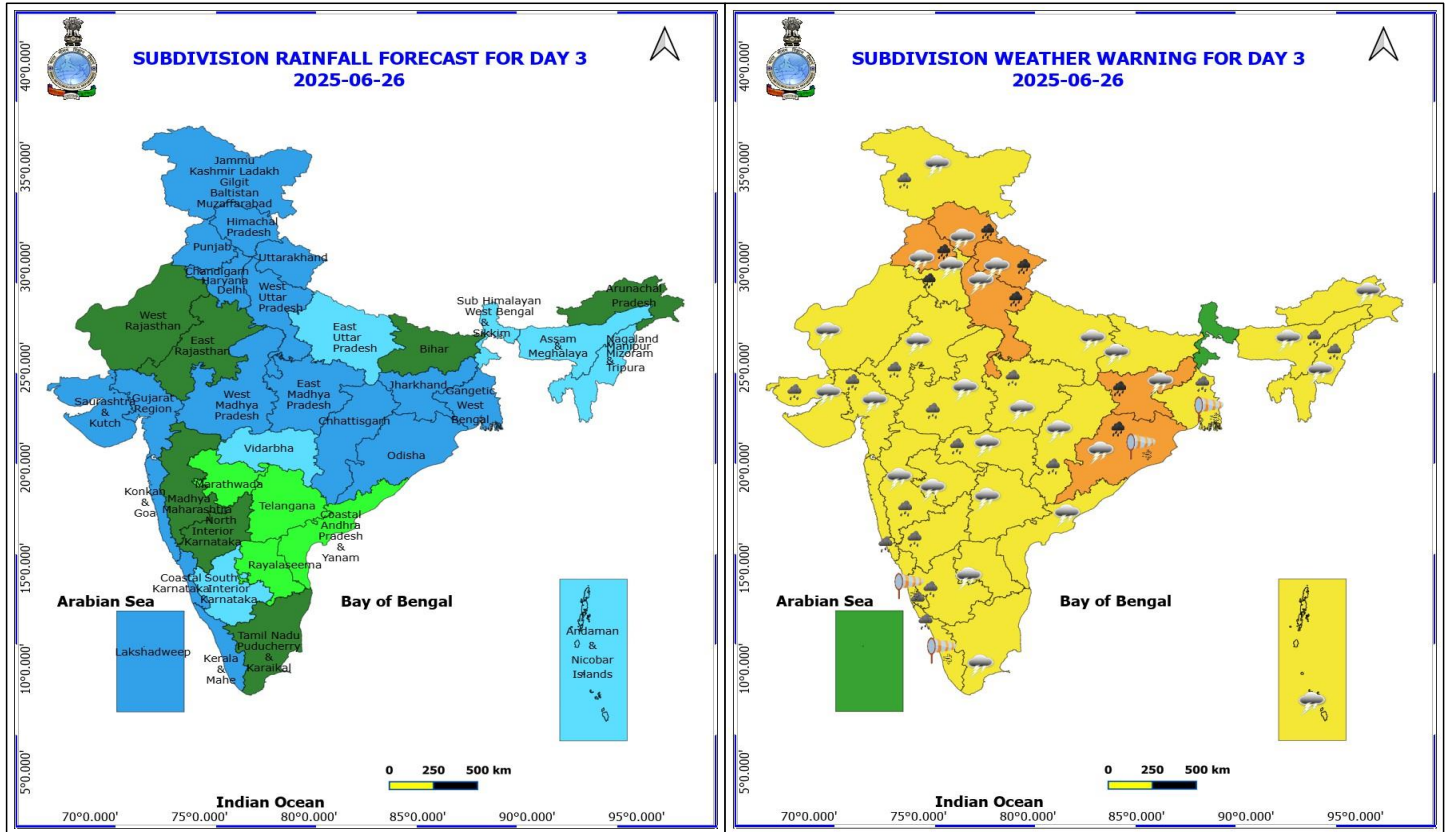


eastcentral, adjoining north Arabian Sea & adjoining southwest Arabian Sea; Squally weather with wind speed 40 - 50 kmph gusting to 60 kmph likely to prevail over most parts of eastcentral & adjoining areas of westcentral, northeast, south Arabian Sea, along and off south Gujarat coast, off Konkan coast, off north Andhra Pradesh, Odisha, West Bengal coasts, most parts of northwest Bay of Bengal & adjoining northeast Bay of Bengal, many parts of central Bay of Bengal & adjoining and some parts of south Bay of Bengal, over Andaman Sea; Squally weather with wind speed reaching 45 kmph to 55 kmph gusting to 65 kmph likely to prevail over western parts of eastcentral & adjoining westcentral Arabian Sea.





northeast, south Arabian Sea, off south Gujarat, Konkan coasts, along and off Odisha, West Bengal coasts, most parts of northwest and adjoining northeast Bay of Bengal, many parts of westcentral & adjoining eastcentral Bay of Bengal, many parts of southwest Bay of Bengal, along and off Sri Lanka coast; Squally weather with wind speed reaching 45 kmph to 55 kmph gusting to 65 kmph likely to prevail over western parts of eastcentral & adjoining westcentral Arabian Sea.



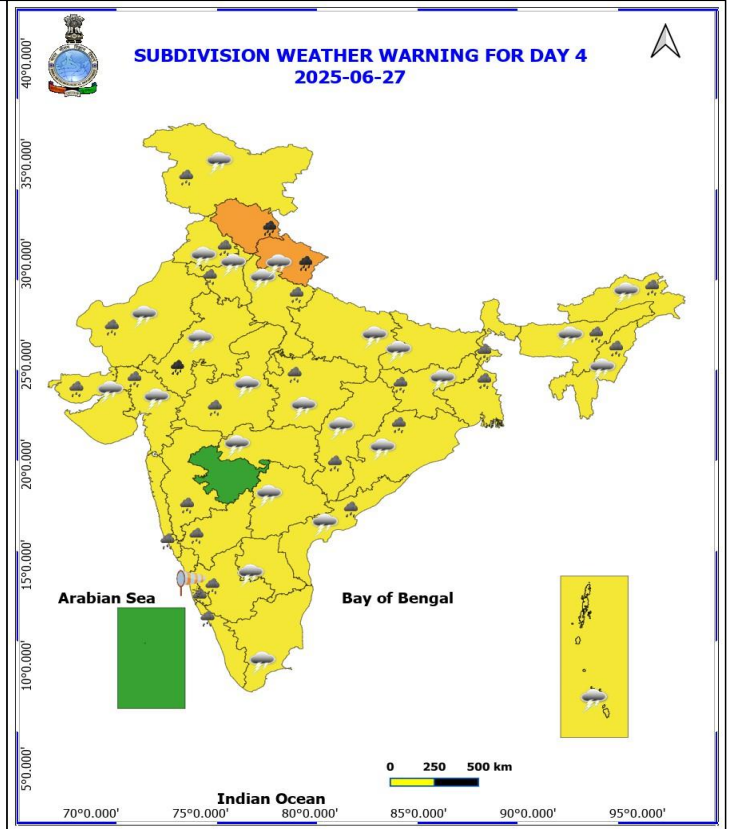
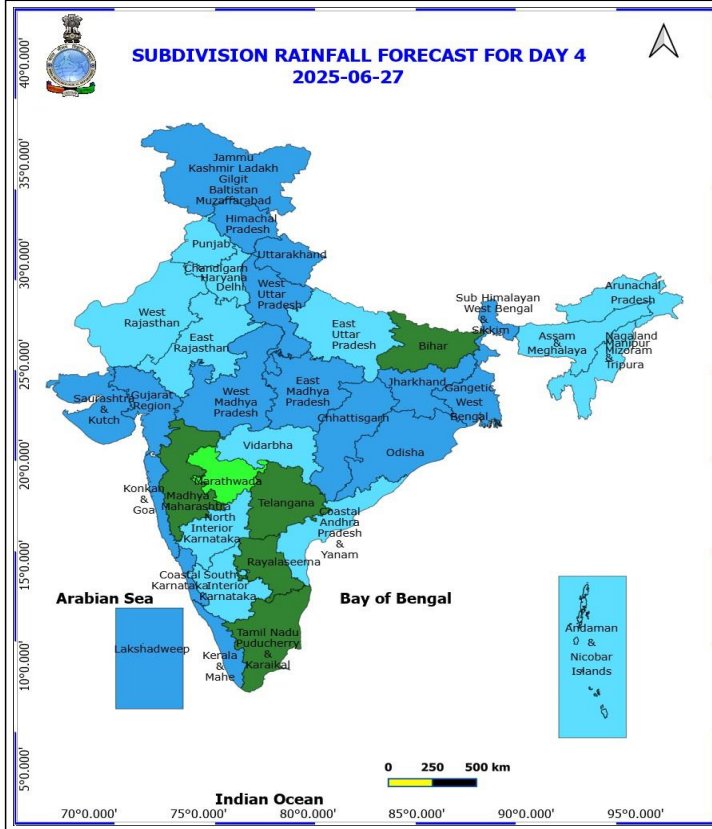
## 26 June (Day 3)

- ❖ **Heavy to Very Heavy Rainfall** very likely at isolated places over Haryana, Chandigarh & Delhi, Himachal Pradesh, Jharkhand, Odisha, Punjab, Uttarakhand and West Uttar Pradesh.
- ❖ **Heavy Rainfall** very likely at isolated places over Assam & Meghalaya, Chhattisgarh, Coastal Karnataka, East Rajasthan, Gangetic West Bengal, Gujarat State, Interior Karnataka, Jammu-Kashmir-Ladakh-Gilgit-Baltistan-Muzaffarabad, Kerala & Mahe, Konkan & Goa, Madhya Maharashtra, Madhya Pradesh, Nagaland, Manipur, Mizoram and Tripura and Vidarbha.
- ❖ **Thunderstorm accompanied with lightning & gusty winds(40-50kmph)** very likely at isolated places over Jammu-Kashmir-Ladakh-Gilgit-Baltistan-Muzaffarabad and Uttarakhand.
- ❖ **Thunderstorm accompanied with lightning & gusty winds(30-40kmph)** very likely at isolated places over Andaman & Nicobar Islands, Bihar, Gujarat State, Jharkhand, Madhya Maharashtra, Marathwada, Odisha, Telangana and West Rajasthan.
- ❖ **Thunderstorm accompanied with Lightning** very likely at isolated places over Andhra Pradesh, Arunachal Pradesh, Assam & Meghalaya, Chhattisgarh, East Rajasthan, Haryana, Chandigarh & Delhi, Himachal Pradesh, Madhya Pradesh, Nagaland, Manipur, Mizoram and Tripura, Punjab, Tamil Nadu Puducherry & Karaikal, Uttar Pradesh and Vidarbha.
- ❖ **Strong Surface Winds** very likely at isolated places over Coastal Karnataka, Gangetic West Bengal, Kerala & Mahe and Odisha.

**No Fishermen Warning**

**\*Red color warning does not mean "Red Alert" Red color warning means "Take Action"**  
Forecast and warning for any day is valid from 0830 hours IST of day till 0830 hours IST of next day  
For more details kindly visit <https://mausam.imd.gov.in> or contact 011-2434-4599

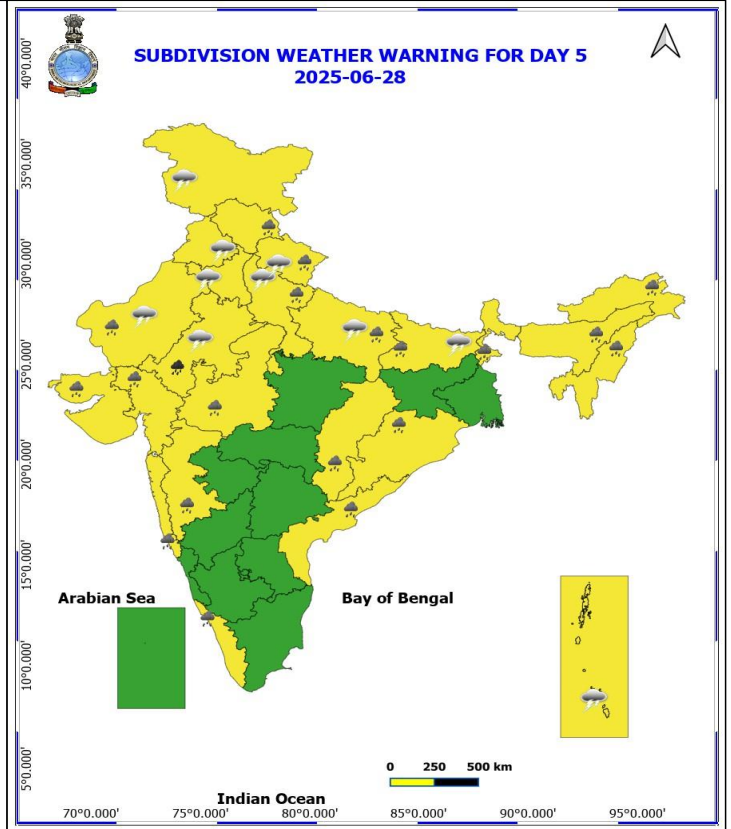
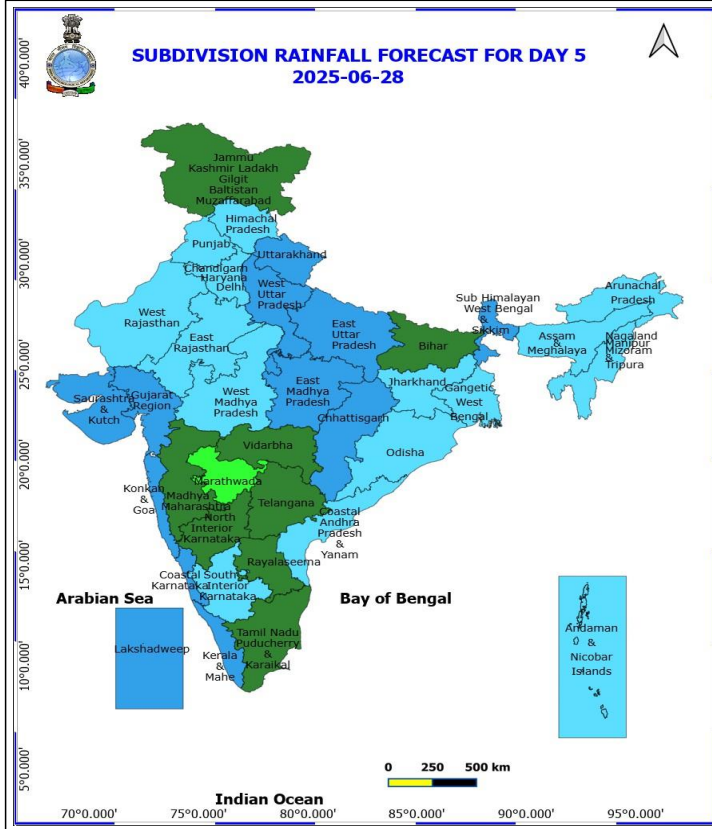
(Service to the nation since 1875)



## 27 June (Day 4)

- ❖ **Heavy to Very Heavy Rainfall** likely at isolated places over East Rajasthan, Himachal Pradesh and Uttarakhand.
- ❖ **Heavy Rainfall** likely at isolated places over Arunachal Pradesh, Assam & Meghalaya, Chhattisgarh, Coastal Andhra Pradesh, Coastal Karnataka, Gujarat State, Haryana, Chandigarh & Delhi, Interior Karnataka, Jammu-Kashmir-Ladakh-Gilgit-Baltistan-Muzaffargarab, Jharkhand, Kerala & Mahe, Konkan & Goa, Madhya Maharashtra, Madhya Pradesh, Nagaland, Manipur, Mizoram and Tripura, Odisha, Punjab, West Bengal & Sikkim, West Rajasthan and West Uttar Pradesh.
- ❖ **Thunderstorm accompanied with lightning & gusty winds(40-50kmph)** likely at isolated places over Jammu-Kashmir-Ladakh-Gilgit-Baltistan-Muzaffargarab and Uttarakhand.
- ❖ **Thunderstorm accompanied with lightning & gusty winds(30-40kmph)** likely at isolated places over Andaman & Nicobar Islands, Bihar, Gujarat State, Jharkhand, Odisha, Telangana and West Rajasthan.
- ❖ **Thunderstorm accompanied with Lightning** likely at isolated places over Andhra Pradesh, Arunachal Pradesh, Assam & Meghalaya, Chhattisgarh, East Rajasthan, Haryana, Chandigarh & Delhi, Madhya Pradesh, Nagaland, Manipur, Mizoram and Tripura, Punjab, Tamil Nadu Puducherry & Karaikal, Uttar Pradesh and Vidarbha.
- ❖ **Strong Surface Winds** likely at isolated places over Coastal Karnataka.

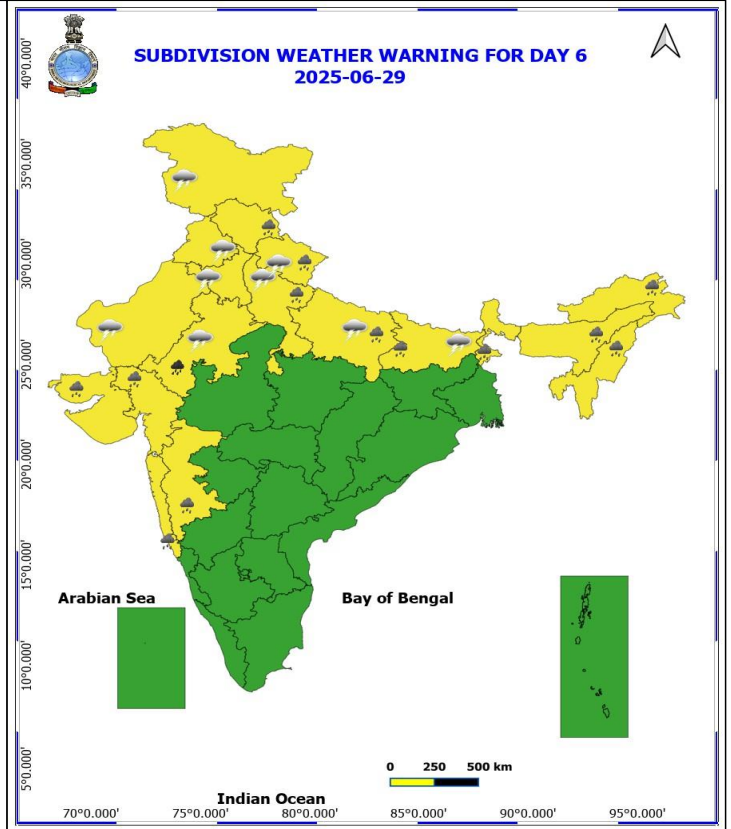
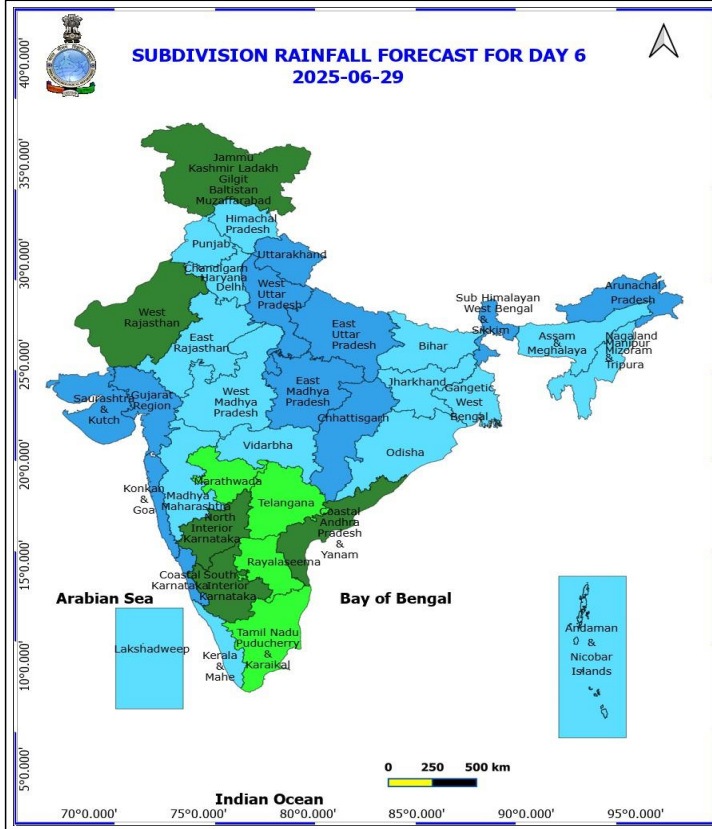
**No Fishermen Warning**



## 28 June (Day 5)

- ❖ **Heavy to Very Heavy Rainfall** likely at isolated places over East Rajasthan.
- ❖ **Heavy Rainfall** likely at isolated places over Arunachal Pradesh, Assam & Meghalaya, Bihar, Chhattisgarh, Coastal Andhra Pradesh, Gujarat State, Himachal Pradesh, Kerala & Mahe, Konkan & Goa, Madhya Maharashtra, Nagaland, Manipur, Mizoram and Tripura, Odisha, Sub Himalayan West Bengal & Sikkim, Uttar Pradesh, Uttarakhand, West Madhya Pradesh and West Rajasthan.
- ❖ **Thunderstorm accompanied with lightning & gusty winds(40-50kmph)** likely at isolated places over Jammu-Kashmir-Ladakh-Gilgit-Baltistan-Muzaffarabad and Uttarakhand.
- ❖ **Thunderstorm accompanied with lightning & gusty winds(30-40kmph)** likely at isolated places over Andaman & Nicobar Islands, Bihar and West Rajasthan.
- ❖ **Thunderstorm accompanied with Lightning** likely at isolated places over East Rajasthan, Haryana, Chandigarh & Delhi, Punjab and Uttar Pradesh.

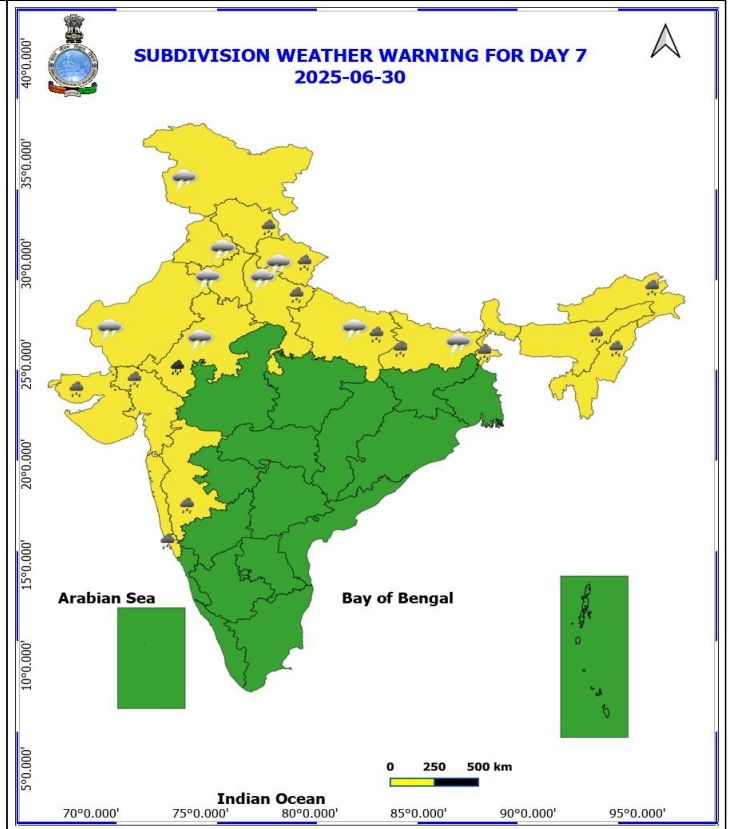
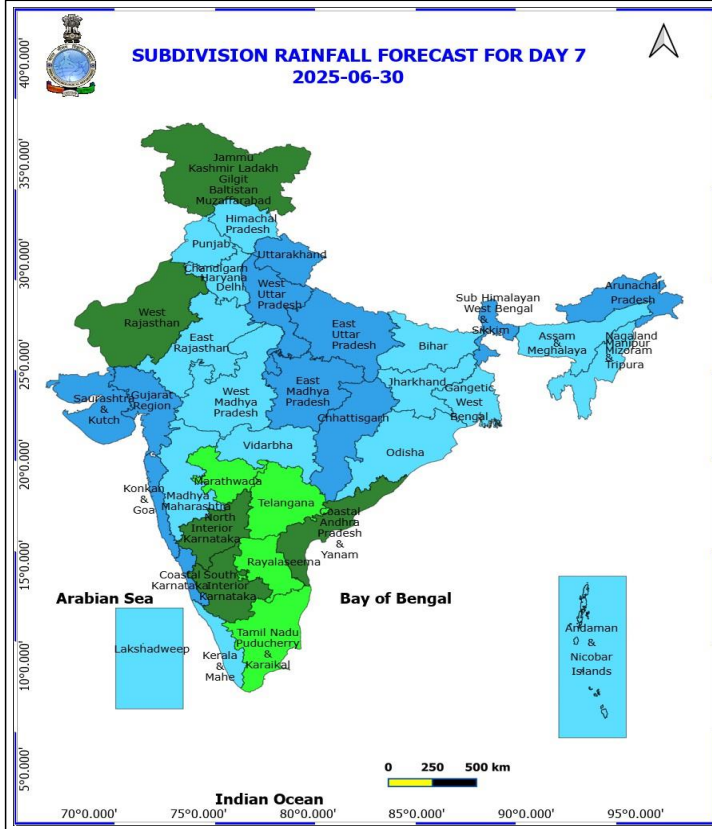
**No Fishermen Warning**



## 29 June (Day 6)

- ❖ **Heavy to Very Heavy Rainfall** likely at isolated places over East Rajasthan.
- ❖ **Heavy Rainfall** likely at isolated places over Arunachal Pradesh, Assam & Meghalaya, Bihar, Gujarat State, Himachal Pradesh, Konkan & Goa, Madhya Maharashtra, Nagaland, Manipur, Mizoram and Tripura, Sub Himalayan West Bengal & Sikkim, Uttar Pradesh and Uttarakhand.
- ❖ **Thunderstorm accompanied with lightning & gusty winds(40-50kmph)** likely at isolated places over Jammu-Kashmir-Ladakh-Gilgit-Baltistan-Muzaffargarh and Uttarakhand.
- ❖ **Thunderstorm accompanied with lightning & gusty winds(30-40kmph)** likely at isolated places over Bihar and West Rajasthan.
- ❖ **Thunderstorm accompanied with Lightning** likely at isolated places over East Rajasthan, Haryana, Chandigarh & Delhi, Punjab and Uttar Pradesh.

**No Fishermen Warning**



### 30 June (Day 7)

- ❖ **Heavy to Very Heavy Rainfall** likely at isolated places over East Rajasthan.
- ❖ **Heavy Rainfall** likely at isolated places over Arunachal Pradesh, Assam & Meghalaya, Bihar, Gujarat State, Himachal Pradesh, Konkan & Goa, Madhya Maharashtra, Nagaland, Manipur, Mizoram and Tripura, Sub Himalayan West Bengal & Sikkim, Uttar Pradesh and Uttarakhand.
- ❖ **Thunderstorm accompanied with lightning & gusty winds(40-50kmph)** likely at isolated places over Jammu-Kashmir-Ladakh-Gilgit-Baltistan-Muzaffarabad and Uttarakhand.
- ❖ **Thunderstorm accompanied with lightning & gusty winds(30-40kmph)** likely at isolated places over Bihar and West Rajasthan.
- ❖ **Thunderstorm accompanied with Lightning** likely at isolated places over East Rajasthan, Haryana, Chandigarh & Delhi, Punjab and Uttar Pradesh.

**No Fishermen Warning**



## Table-1

### 7 Days Rainfall Forecast

S.No.	Subdivision	24- Jun	25- Jun	26- Jun	27- Jun	28- Jun	29- Jun	30- Jun
		Day 1	Day 2	Day 3	Day 4	Day 5	Day 6	Day 7
1	ANDAMAN & NICOBAR ISLANDS	WS	WS	FWS	FWS	FWS	FWS	FWS
2	ARUNACHAL PRADESH	WS	FWS	SCT	FWS	FWS	WS	WS
3	ASSAM & MEHGHALAYA	FWS	FWS	FWS	FWS	FWS	FWS	FWS
4	N. M. M. & T.	WS	FWS	FWS	FWS	FWS	FWS	FWS
5	S.H. WEST BENGAL & SIKKIM	WS	FWS	FWS	WS	WS	WS	WS
6	GANGETIC WEST BENGAL	WS	WS	WS	WS	FWS	FWS	FWS
7	ODISHA	FWS	FWS	WS	WS	FWS	FWS	FWS
8	JHARKHAND	WS	WS	WS	WS	FWS	FWS	FWS
9	BIHAR	FWS	FWS	SCT	SCT	SCT	FWS	FWS
10	EAST UTTAR PRADESH	FWS	FWS	FWS	FWS	WS	WS	WS
11	WEST UTTAR PRADESH	FWS	FWS	WS	WS	WS	WS	WS
12	UTTARAKHAND	WS	WS	WS	WS	WS	WS	WS
13	HARYANA, CHD & DELHI	FWS	WS	WS	FWS	FWS	FWS	FWS
14	PUNJAB	SCT	WS	WS	FWS	FWS	FWS	FWS
15	HIMACHAL PRADESH	FWS	WS	WS	WS	FWS	FWS	FWS
16	JAMMU AND KASHMIR AND LADAKH	SCT	WS	WS	WS	SCT	SCT	SCT
17	WEST RAJASTHAN	SCT	ISOL	SCT	FWS	FWS	SCT	SCT
18	EAST RAJASTHAN	FWS	SCT	SCT	FWS	FWS	FWS	FWS
19	WEST MADHYA PRADESH	WS	WS	WS	WS	FWS	FWS	FWS
20	EAST MADHYA PRADESH	WS	WS	WS	WS	WS	WS	WS
21	GUJRAT REGION	WS	WS	WS	WS	WS	WS	WS
22	SAURASHTRA & KUTCH	FWS	FWS	WS	WS	WS	WS	WS
23	KONKAN & GOA	WS	WS	WS	WS	WS	WS	WS
24	MADHYA MAHARASHTRA	SCT	SCT	SCT	SCT	SCT	FWS	FWS
25	MARATHWADA	ISOL	ISOL	ISOL	ISOL	ISOL	ISOL	ISOL
26	VIDARBHA	WS	WS	FWS	FWS	SCT	FWS	FWS
27	CHATTISGARH	FWS	FWS	WS	WS	WS	WS	WS
28	COASTAL ANDHRA PRADESH	SCT	ISOL	ISOL	FWS	FWS	SCT	SCT
29	TELANGANA	ISOL	ISOL	ISOL	SCT	SCT	ISOL	ISOL
30	RAYALASEEMA	ISOL	ISOL	ISOL	SCT	SCT	ISOL	ISOL
31	TAMILNADU & PUDUCHERRY	ISOL	ISOL	SCT	SCT	SCT	ISOL	ISOL
32	COSTAL KARNATAKA	WS	WS	WS	WS	WS	WS	WS
33	NORTH INTERIOR KARNATAKA	SCT	SCT	SCT	FWS	SCT	SCT	SCT
34	SOUTH INTERIOR KARNATAKA	FWS	FWS	FWS	FWS	FWS	SCT	SCT
35	KERALA	WS	WS	WS	WS	WS	FWS	FWS
36	LAKSHDWEEP	WS	WS	WS	WS	WS	FWS	FWS

Legend	Category	%Stations
WS	Widespread/Most Places	76-100
FWS	Fairly Widespread/Many Places	51-75
SCT	Scattered/ A Few Places	26-50
ISOL	Isolated Places	1-25
DRY	No Rain	0

\*Red color warning does not mean "Red Alert" Red color warning means "Take Action"  
Forecast and warning for any day is valid from 0830 hours IST of day till 0830 hours IST of next day  
For more details kindly visit <https://mausam.imd.gov.in> or contact 011-2434-4599

(Service to the nation since 1875)

Fig. 1: Maximum Temperatures Dated 2025-06-24

Fig. 2: Departure of Maximum Temp. Dated 2025-06-24

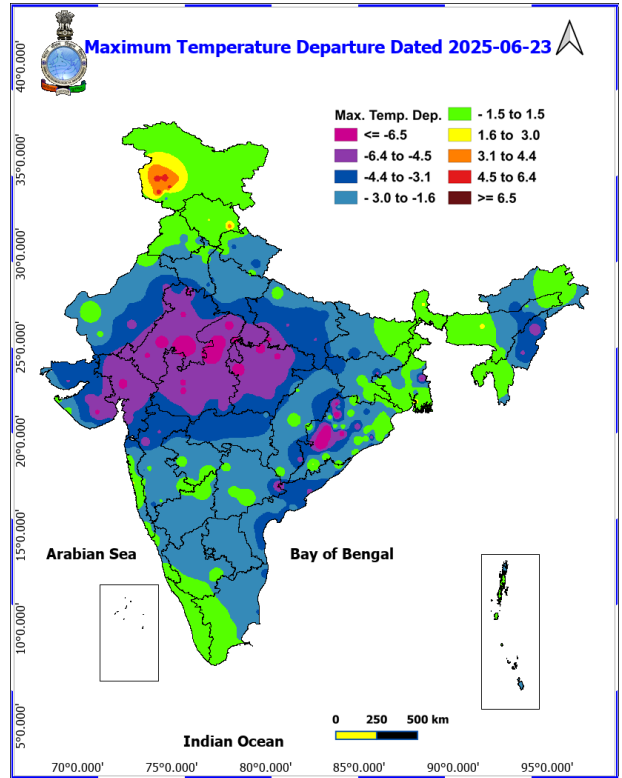
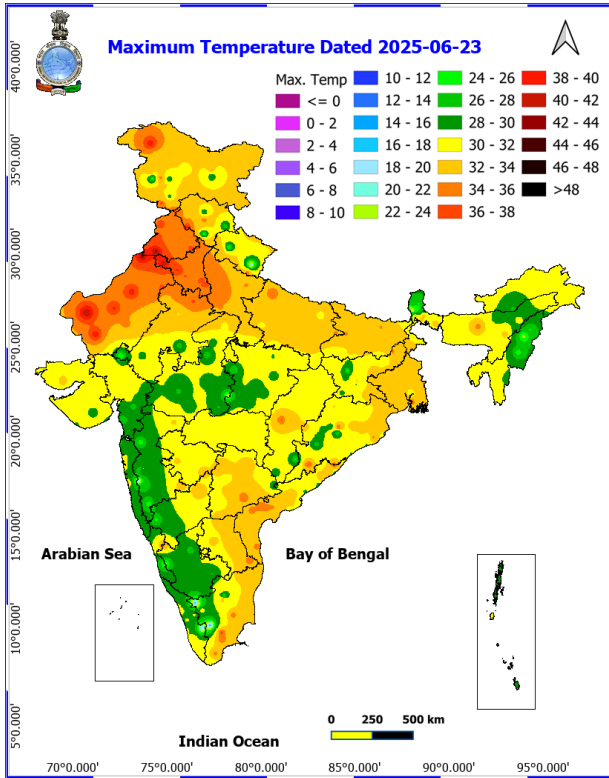
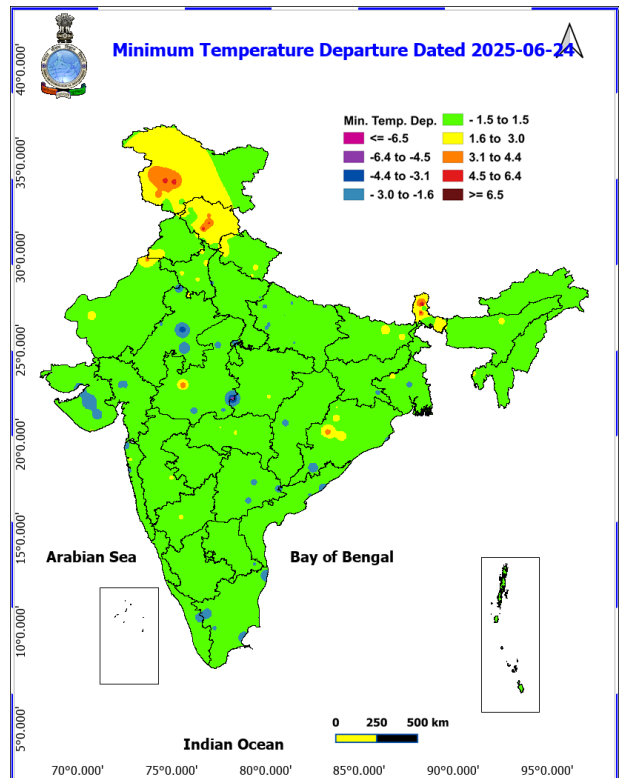
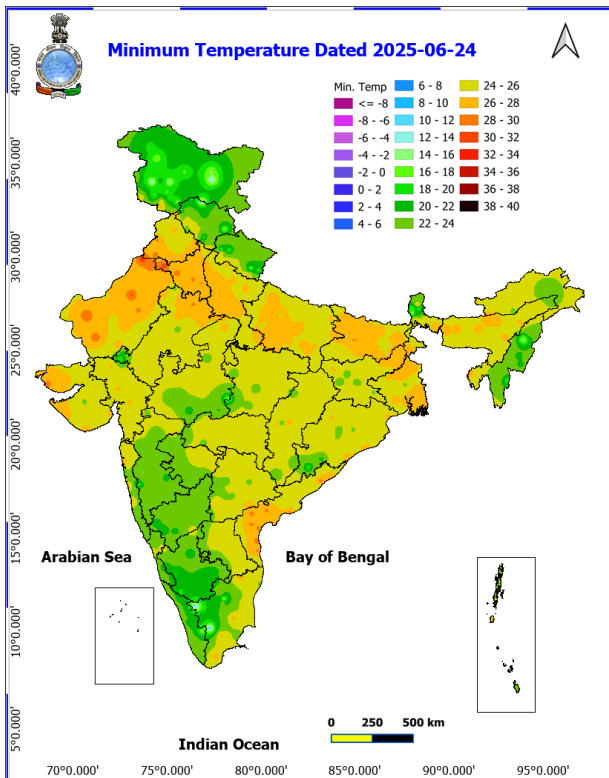


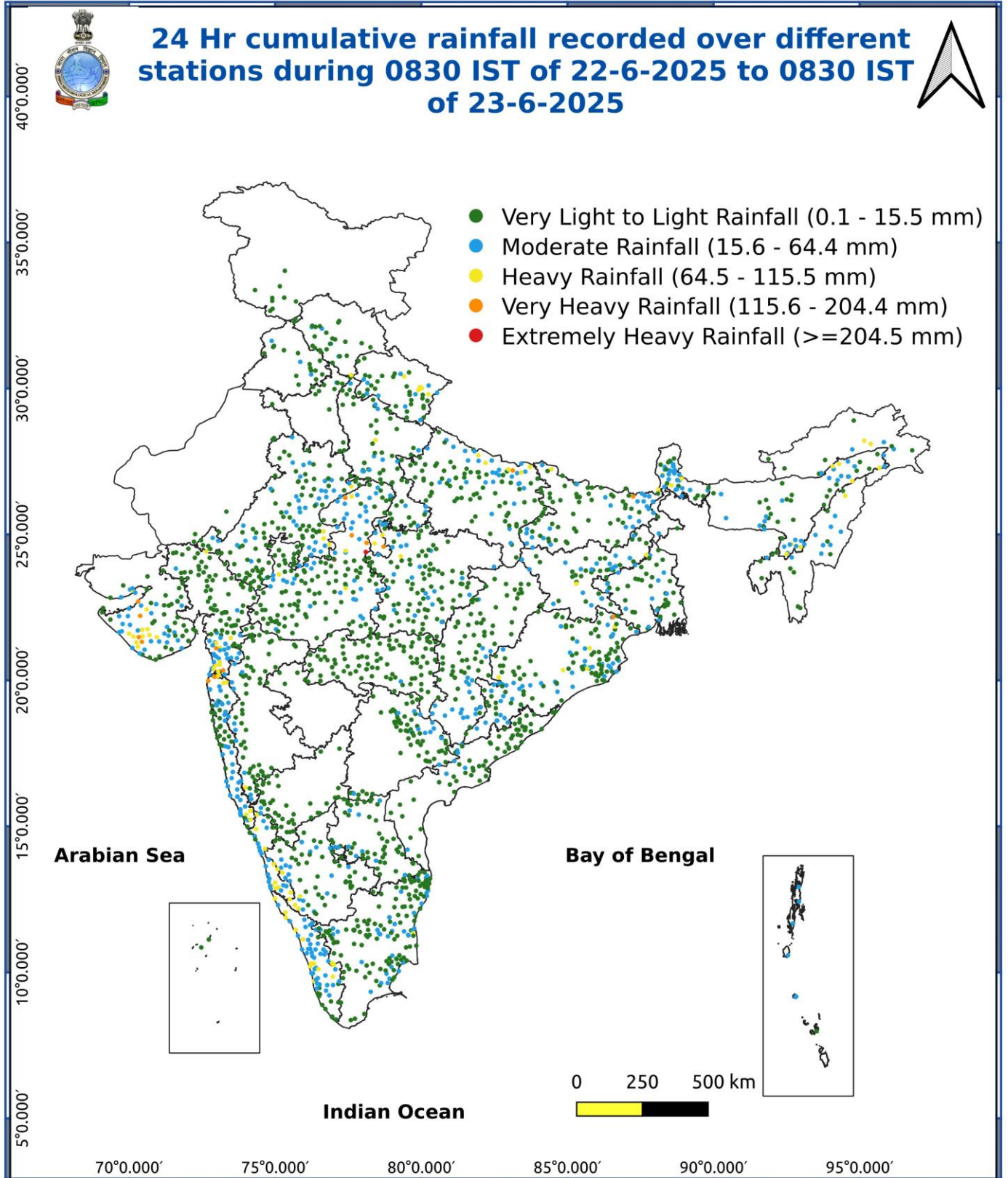
Fig. 3: Minimum Temperatures Dated 2025-06-24

Fig. 4: Departure of Minimum Temp. Dated 2025-06-24



**\*Red color warning does not mean "Red Alert" Red color warning means "Take Action"**  
Forecast and warning for any day is valid from 0830 hours IST of day till 0830 hours IST of next day  
For more details kindly visit <https://mausam.imd.gov.in> or contact 011-2434-4599

(Service to the nation since 1875)



\*Red color warning does not mean "Red Alert" Red color warning means "Take Action"  
Forecast and warning for any day is valid from 0830 hours IST of day till 0830 hours IST of next day  
For more details kindly visit <https://mausam.imd.gov.in> or contact 011-2434-4599

(Service to the nation since 1875)

### Impact & Action Suggested due to extremely heavy falls/ very heavy rainfall:

**Extremely heavy rainfall (>20 cm/24 hours) likely at isolated places over West Madhya Pradesh on 24<sup>th</sup> June.**

**Very heavy rainfall** over East Rajasthan, Madhya Pradesh, Bihar, Konkan, Arunachal Pradesh on 24<sup>th</sup>; Vidarbha on 24<sup>th</sup>; Jharkhand on 26<sup>th</sup>, Odisha, Haryana, Punjab, West Uttar Pradesh on 25<sup>th</sup> & 26<sup>th</sup> June; Himachal Pradesh, Uttarakhand during 24<sup>th</sup>-27<sup>th</sup>, Jammu-Kashmir-Ladakh-Gilgit-Baltistan-Muzaffarabad on 25<sup>th</sup> June.

#### Impact Expected

- ♦ Localized Flooding of roads, water logging in low lying areas and closure of underpasses mainly in urban areas of the above region.
- ♦ Occasional reduction in visibility due to heavy rainfall.
- ♦ Disruption of traffic in major cities due to water logging in roads leading to increased travel time.
- ♦ Minor damage to kutch roads.
- ♦ Possibilities of damage to vulnerable structure.
- ♦ Localized Landslides/Mudslides/landslides/mudslips/landsinks/mudsinks.
- ♦ Damage to horticulture and standing crops in some areas due to inundation.
- ♦ It may lead to riverine flooding in some river catchments (for riverine flooding please visit Web page of CWC)

#### Action Suggested

- ♦ Check for traffic congestion on your route before leaving for your destination.
- ♦ Follow any traffic advisories that are issued in this regard.
- ♦ Avoid going to areas that face the water logging problems often.
- ♦ Avoid staying in vulnerable structure.

### Agromet advisories for various parts of the country

- In **Gujarat**, postpone nursery sowing of rice. Ensure proper drainage facilities in already sown rice nurseries, sugarcane fields, banana and mango plantations to prevent waterlogging. Provide support to sugarcane and banana to prevent lodging. In **Saurashtra & Kutch**, postpone sowing of *kharif* groundnut, cotton, sesame, pearl millet, green gram, black gram, cowpea, pigeon pea, maize, sorghum and vegetables. Drain out excess rain water from vegetable nurseries and horticultural plantations.
- In **West Madhya Pradesh**, Postpone harvesting of maize. Postpone sowing of pearl millet, soybean, pigeon pea and paddy nurseries. Make necessary arrangements to drain out excess water from vegetables and orchards to avoid waterlogging. In **Kymore Plateau and Satpura Hill Zone of East Madhya Pradesh**, harvest matured green gram and black gram crop and store in a safe place. In **Gird Zone of West Madhya Pradesh**, harvest matured maize crop and keep it in safe place. Postpone sowing of soybean and transplanting of chilli, tomato, brinjal etc. and ensure proper drainage in already sown / transplanted fields.
- In **East Rajasthan**, harvest the matured vegetables such as okra and cucurbits and store them in safe place. Make arrangement for draining out excess water from the fields of groundnut and green gram.
- In **Uttarakhand**, make proper drainage channels in rice nurseries, pigeon pea, groundnut, maize, soybean, barnyard millet and finger millet to avoid waterlogging. In **Bhabar and Tarai Zone of Uttarakhand**, harvest matured spring maize crop and vegetables (pumpkin, tomato, okra, chilli, French bean etc.) and store in safe place during clear weather.
- In **Sub-Montane and Low Hills Sub-Tropical Zone of Himachal Pradesh**, provide drainage in maize and vegetable fields. Strengthen the support for creepers and tall vegetable crops (tomato, capsicum etc.). In **Mid Hills Sub-Humid Zone of Himachal Pradesh**, harvest matured fruits of plum to minimize losses due to heavy rains. Make proper drainage channels in the fields of maize, cucumber and tomato to avoid waterlogging. Provide support to cucumber vines and tomato plants to prevent lodging.

- In **East Uttar Pradesh**, make necessary arrangement to protect paddy nurseries from the adverse impacts of heavy rainfall. In **West Uttar Pradesh**, make arrangement to drain out excess water from the fields of pigeon pea and vegetables. Provide support to bottle gourd vegetables.
- In **Sub-Himalayan West Bengal**, maintain proper drainage channels in rice nurseries and fields of jute and ginger to avoid water stagnation.
- In **Konkan & Goa** make arrangement to drain out excess water from rice nurseries, fields of finger millet, groundnut and orchards to prevent waterlogging.
- In **ghat areas of Madhya Maharashtra**, drain out excess water from rice nurseries and banana plantations to prevent waterlogging.
- In **Assam**, keep the harvested produce of sesame, foxtail millet, *Boro* rice, banana and citrus at safer places. Ensure proper drainage in *Sali* rice nursery, maize and sugarcane fields, are canut and coconut plantations to prevent waterlogging. In **Barak Valley Zone of Assam**, postpone nursery sowing of *Sali* rice.
- In **Meghalaya**, postpone nursery sowing of rice especially in valleys. Ensure proper drainage in the fields of maize, ginger, French bean, cowpea, vegetables and around rice nurseries to prevent waterlogging. Provide strong bamboo stakes or trellis support to cow pea, cucumber and bottle gourd to prevent vines from trailing on wet ground. Provide support to banana plant to prevent lodging.
- In **Arunachal Pradesh**, keep the harvested produce of soybean and vegetables such as chilli and okra at a safer place. Ensure proper drainage in rice nurseries, kiwi and apple orchards to avoid waterlogging.
- In **Nagaland**, avoid transplanting of TRC/WRC rice. Postpone sowing of soybean. Provide proper staking to vine type plants.

### Livestock / Fishery

- Keep the animals inside the shed during heavy rainfall and provide them balanced feed.
- Store feed and fodder in a safe place to prevent spoilage.
- Construct an outlet with proper netting around the ponds to drain out excess water, thereby preventing fish from escaping in case of overflow.

### Agromet advisories for likely impact of Thunderstorm / Gusty Winds / Squally Winds

- Provide mechanical support to horticultural crops and staking or support to vegetables and young fruit plants / fruit-bearing plants to avoid lodging due to strong winds.

### Flash Flood Guidance:

#### 24 hours Outlook for the Flash Flood Risk (FFR) till 0530

#### IST of 25-06-2025 :

**Low to Moderate flash flood risk** likely over few watersheds & neighbourhoods of following Met Sub-divisions during next 24 hours.

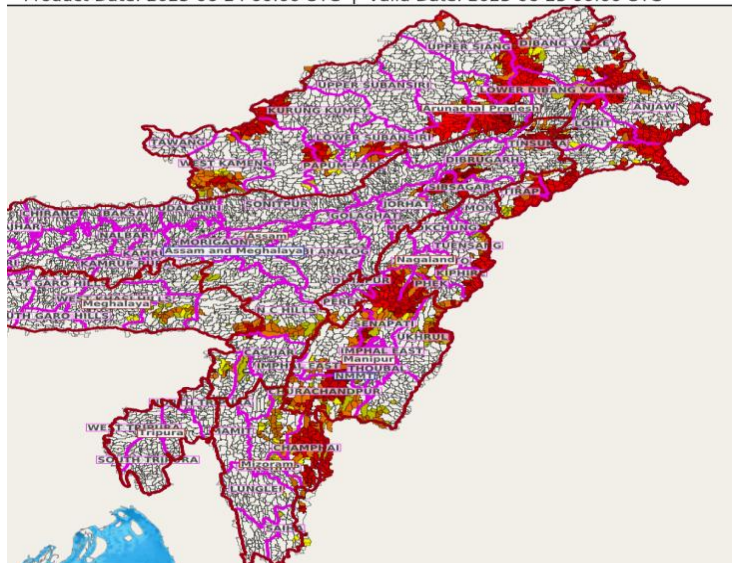
**Arunachal Pradesh** - Changlang, Dibang Valley, East Kameng, East Siang, Lohit, Lower Dibang Valley, Papum-Pare, Tirap, West Kameng, West Siang, Anjaw, Upper Siang and Kurung Kumey districts. **Nagaland Mizoram Manipur Tripura (NMMT) – Manipur**- Bishnupur, Chandel, Churachandpur, Imphal West, Senapati, Tamenglong, Ukhrul,

**Mizoram**- Aizawl, Champhai, Kolasib, Lawngtlai, Lunglei, Saiha, Serchhip,

**Nagaland**- Dimapur, Kiphire, Kohima, Mon, Peren, Phek, Tuensang, Wokha and Zunheboto districts.

Surface runoff/ Inundation may occur at some fully saturated soils & low-lying areas over Area of Concern (AoC) as shown in map due to expected rainfall occurrence in next 24 hours.

Product: GFS FFR | Timescale: 24-hr | Region: "INDIA"  
Product Date: 2025-06-24 00:00 UTC | Valid Date: 2025-06-25 00:00 UTC



**\*Red color warning does not mean "Red Alert" Red color warning means "Take Action"**

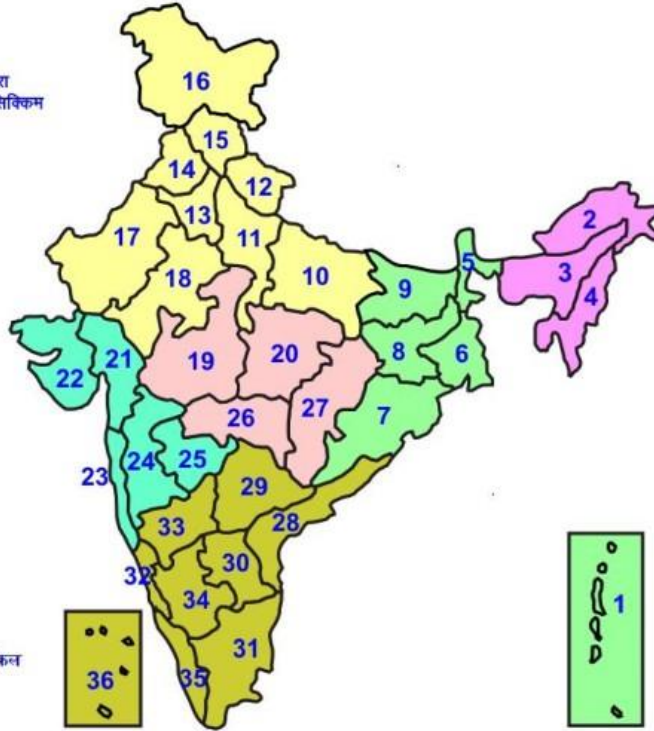
**Forecast and warning for any day is valid from 0830 hours IST of day till 0830 hours IST of next day**

**For more details kindly visit <https://mausam.imd.gov.in> or contact 011-2434-4599**

**(Service to the nation since 1875)**

## LEGENDS

- 1 अंडमान और निकोबार द्वीप समुह
- 2 अरुणाचल प्रदेश
- 3 असम और मेघालय
- 4 नागालैंड मनीपुर मीजोरम और त्रिपुरा
- 5 उप हिमालय पश्चिम बंगाल एवं सिक्किम
- 6 पश्चिम बंगाल
- 7 ओडिसा
- 8 झारखंड
- 9 बिहार
- 10 पूर्वी उत्तर प्रदेश
- 11 पश्चिम उत्तर प्रदेश
- 12 उत्तराखंड
- 13 हरियाणा चंडिगढ़ एवं दिल्ली
- 14 पंजाब
- 15 हिमाचल प्रदेश
- 16 जम्मू एवं कश्मीर एवं लद्दाख
- 17 पश्चिम राजस्थान
- 18 पूर्वी राजस्थान
- 19 पश्चिम मध्य प्रदेश
- 20 पूर्वी मध्य प्रदेश
- 21 गुजरात क्षेत्र
- 22 सौराष्ट्र एवं कच्छ
- 23 कोंकण एवं गोवा
- 24 मध्य महाराष्ट्र
- 25 मराठावाडा
- 26 विदर्भ
- 27 छत्तीसगढ़
- 28 तटीय आंध्र प्रदेश एवं यनम
- 29 तेलंगाना
- 30 रायलसीमा
- 31 तमिलनाडु, पुदुचेरी एवं कराईकल
- 32 तटिय कर्नाटक
- 33 आंतरिक उत्तरी कर्नाटक
- 34 आंतरिक दक्षिणी कर्नाटक
- 35 केरल एवं माहे
- 36 लक्षद्वीप



1. Andaman & Nicobar Islands
2. Arunachal Pradesh
3. Assam & Meghalaya
4. Nagaland, Manipur, Mizoram & Tripura
5. Sub-Himalayan West Bengal & Sikkim
6. Gangetic West Bengal
7. Orissa
8. Jharkhand
9. Bihar
10. East Uttar Pradesh
11. West Uttar Pradesh
12. Uttarakhand
13. Haryana, Chd & Delhi
14. Punjab
15. Himachal Pradesh
16. Jammu & Kashmir and Ladakh
17. West Rajasthan
18. East Rajasthan
19. West Madhya Pradesh
20. East Madhya Pradesh
21. Gujarat
22. Saurashtra
23. Konkan & Goa
24. Madhya Maharashtra
25. Marathwada
26. Vidharbha
27. Chhattisgarh
28. Coastal Andhra Pradesh & Yanam
29. Telangana
30. Rayalaseema
31. Tamilnadu, Puducherry & Karaikal
32. Coastal Karnataka
33. North Interior Karnataka
34. South Interior Karnataka
35. Kerala & Mahe
36. Lakshadweep

## SPATIAL DISTRIBUTION (% of Stations reporting)

% Stations	Category	% Stations	Category
76-100	Widespread (WS/ Most Places)	26-50	Scattered (SCT/ A Few Places)
51-75	Fairly Widespread (FWS/ Many Places)	1-25	Isolated (ISOL)

### Subdivision Colour

- NO WARNING
- WATCH (BE UPDATED)
- ALERT (BE PREPARED TO TAKE ACTION)
- WARNING (TAKE ACTION)

### Probabilistic Forecast

Terms	Probability of Occurrence (%)
Unlikely	< 25
Likely	25 - 50
Very Likely	50 - 75
Most Likely	> 75

- |                          |                 |                      |                    |
|--------------------------|-----------------|----------------------|--------------------|
| Heavy Rain               | Very Heavy Rain | Extremely Heavy Rain | Heavy Snow         |
| Thunderstorm & Lightning | Hailstorm       | Dust Storm           | Dust Raising Winds |
| Strong surface winds     | Heat Wave       | Hot Day              | Warm Night         |
| Cold Wave                | Cold Day        | Ground Frost         | Fog                |
| Hot & Humid              |                 |                      |                    |

\*Red color warning does not mean "Red Alert" Red color warning means "Take Action"

Forecast and warning for any day is valid from 0830 hours IST of day till 0830 hours IST of next day

For more details kindly visit <https://mausam.imd.gov.in> or contact 011-2434-4599

(Service to the nation since 1875)

## LEGENDS

### WARNING

WARNING (TAKE ACTION)
ALERT (BE PREPARED)
WATCH (BE UPDATED)
NO WARNING (NO ACTION)

### Probabilistic Forecast

Terms	Probability of Occurrence (%)
Unlikely	< 25
Likely	25 - 50
Very Likely	50 - 75
Most Likely	> 75



Heavy: 64.5 to 115.5 mm/cm \*  
Very Heavy: 115.6 to 204.4 mm/cm\*  
Extremely Heavy: > 204.4 mm/cm \*



When maximum temperature of a station reaches  $\geq 40^{\circ}\text{C}$  for plains and  $\geq 30^{\circ}\text{C}$  for hilly regions  
(a) Based on Departure from normal

Heat Wave: Maximum Temperature Departure from normal  $4.5^{\circ}\text{C}$  to  $6.4^{\circ}\text{C}$ .  
Severe Heat Wave: Maximum Temperature Departure from normal  $\geq 6.5^{\circ}\text{C}$

(b). Based on Actual maximum temperature

Heat Wave: When actual maximum temperature  $\geq 45^{\circ}\text{C}$ .  
Severe Heat Wave: When actual maximum temperature  $\geq 47^{\circ}\text{C}$

(c). Criteria for heat wave for coastal stations

When maximum temperature departure is  $> 4.5^{\circ}\text{C}$  from normal. Heat Wave may be described provided maximum temperature  $\geq 37^{\circ}\text{C}$



When maximum temperature remains  $40^{\circ}\text{C}$

Warm Night: When minimum temperature departure  $4.5^{\circ}\text{C}$  to  $6.4^{\circ}\text{C}$ .  
Severe Warm Night: When minimum temperature departure  $> 6.4^{\circ}\text{C}$ .



When minimum temperature of a station  $\leq 10^{\circ}\text{C}$  for plains and  $\leq 0^{\circ}\text{C}$  for hilly regions.

(a). Based on departure

Cold Wave: Minimum Temperature Departure from normal  $-4.5^{\circ}\text{C}$  to  $-6.4^{\circ}\text{C}$ .  
Severe Cold Wave: Minimum Temperature Departure from normal  $\leq -6.5^{\circ}\text{C}$

(b) Based on actual Minimum Temperature (for Plains only)

Cold Wave : When Minimum Temperature is  $\leq 4.0^{\circ}\text{C}$   
Severe Cold Wave: When Minimum Temperature is  $\leq 2.0^{\circ}\text{C}$

(c) For Coastal Stations

When Minimum Temperature departure is  $\leq -4.5^{\circ}\text{C}$  & actual Minimum Temperature is  $\leq 15^{\circ}\text{C}$



When minimum temperature of a station  $\leq 10^{\circ}\text{C}$  for plains and  $\leq 0^{\circ}\text{C}$  for hilly regions  
Based on departure

Cold Day: Maximum Temperature Departure from normal  $-4.5^{\circ}\text{C}$  to  $-6.4^{\circ}\text{C}$ .  
Severe Cold Day: Maximum Temperature Departure from normal  $\leq -6.5^{\circ}\text{C}$



Phenomenon of small droplets suspended in air and the horizontal visibility  $< 1\text{km}$

Moderate Fog: When the visibility between 500-200 metres  
Dense Fog: when the visibility between 50- 200 metres  
Very Dense Fog: when the visibility  $< 50$  metres



Sudden electrical discharges manifested by a flash of light (Lightning) and a sharp rumbling sound (thunder)



An ensemble of particles of dust or sand energetically lifted to great heights by a strong and turbulent wind.



Ice deposits on ground

Air temperature  $\leq 4^{\circ}\text{C}$  ( over Plains)



A strong wind that rises suddenly, lasts for atleast 1 minute.

Moderate: Wind speed 52-61 kmph  
Severe: Wind speed 62-87 kmph  
Very Severe: Wind speed  $> 87$  kmph



Effect of various waves in the sea over specific area

Rough to very rough: Wind speed 41-62 kmph (22-33 knots) & Wave height 2.5-6 metre  
High to very high: Wind speed 63-117 kmph ( 34-63 knots) & Wave height 6-14 metre  
Phenomenal: Wind speed  $> 117$  kmph ( $> 63$  knots) & Wave height  $> 14$  metre



Cyclonic Storm: Wind speed 62-87 kmph (34-47 knots)  
Severe Cyclonic Storm: Wind speed 88-117 kmph (48-63 knots)  
Very Severe Cyclonic Storm: Wind speed 118-165 kmph (64 - 89 knots)  
Extremely Severe Cyclonic Storm: Wind speed 166-220 kmph (90 -119 knots)  
Super Cyclone Storm: Wind speed  $> 220$  kmph ( $> 119$  knots)

\*Red color warning does not mean "Red Alert" Red color warning means "Take Action"

Forecast and warning for any day is valid from 0830 hours IST of day till 0830 hours IST of next day

For more details kindly visit <https://mausam.imd.gov.in> or contact 011-2434-4599

(Service to the nation since 1875)