

2026-06-26

Time of Issue: 07:56:00 hours IST  
(Morning)

## ALL INDIA WEATHER SUMMARY AND FORECAST BULLETIN

### Significant Weather Features

#### Advance of Southwest Monsoon 2026:

- The **Northern Limit of Monsoon** continues to pass through 20°N/60°E, 20°N/65°E, 20°N/70°E, Surat, Indore, Mandla, Daltonganj, Motihari and 28.3°N/83°E as on 25<sup>th</sup> June.
- **Conditions are favourable** for further advance of southwest monsoon into some more parts of North Arabian Sea, Gujarat, Madhya Pradesh, remaining parts of Chhattisgarh, Jharkhand & Bihar, some parts of Uttar Pradesh & Uttarakhand during next 3-4 days.

#### Weather Forecast and Warnings:

##### Northwest India:

- **Fairly Widespread to Widespread** rainfall likely over Jammu-Kashmir-Ladakh-Gilgit-Baltistan-Muzaffarabad during 30<sup>th</sup> June-02<sup>nd</sup> July; Himachal Pradesh during 30<sup>th</sup> June-02<sup>nd</sup> July; Uttarakhand during 29<sup>th</sup> June-02<sup>nd</sup> July.
- **Fairly Widespread to Widespread** rainfall likely over East Uttar Pradesh during 30<sup>th</sup> June-02<sup>nd</sup> July.
- **Isolated to Scattered** rainfall likely over Jammu-Kashmir-Ladakh-Gilgit-Baltistan-Muzaffarabad, Himachal Pradesh during 26<sup>th</sup>-29<sup>th</sup> June; Uttarakhand during 26<sup>th</sup>-28<sup>th</sup> June.
- **Isolated to Scattered** rainfall likely over East Rajasthan, Haryana Chandigarh & Delhi, Punjab and West Rajasthan during 26<sup>th</sup> June-02<sup>nd</sup> July; West Uttar Pradesh on 26<sup>th</sup> June and during 29<sup>th</sup> June-02<sup>nd</sup> July; East Uttar Pradesh during 26<sup>th</sup>-29<sup>th</sup> June.
- **Isolated thunderstorm, lightning & gusty winds (speed reaching 40-50 kmph gusting to 60 kmph)** likely over Jammu-Kashmir-Ladakh-Gilgit-Baltistan-Muzaffarabad on 26<sup>th</sup> June and during 30<sup>th</sup> June-02<sup>nd</sup> July; Himachal Pradesh during 26<sup>th</sup>-29<sup>th</sup> June; Uttarakhand on 26<sup>th</sup> June.
- **Isolated thunderstorm, lightning & gusty winds (speed reaching 40-50 kmph gusting to 60 kmph)** likely over Haryana Chandigarh & Delhi and Punjab during 25<sup>th</sup>-27<sup>th</sup> June and during 29<sup>th</sup> June-02<sup>nd</sup> July; West Uttar Pradesh during 30<sup>th</sup> June-02<sup>nd</sup> July; East Uttar Pradesh during 29<sup>th</sup> June-02<sup>nd</sup> July; West Rajasthan on 26<sup>th</sup> June; East Rajasthan during 27<sup>th</sup> June-02<sup>nd</sup> July, **with gusty winds (speed reaching 30-40 kmph gusting to 50 kmph)** likely over West Rajasthan during 27<sup>th</sup> June-1<sup>st</sup> July.
- **Isolated thunderstorm & lightning** likely over Uttarakhand during 29<sup>th</sup> June-02<sup>nd</sup> July.
- **Isolated heavy rainfall** likely over Himachal Pradesh during 30<sup>th</sup> June-02<sup>nd</sup> July; Uttarakhand during 29<sup>th</sup> June-02<sup>nd</sup> July.
- **Thundersquall (wind speed reaching 50-60 kmph gusting to 70 kmph)** likely over East Rajasthan on 26<sup>th</sup> June.

##### Central India:

- **Isolated to Scattered** rainfall likely over East Madhya Pradesh and West Madhya Pradesh during 26<sup>th</sup> June-02<sup>nd</sup> July; Vidarbha during 26<sup>th</sup>-27<sup>th</sup> June and during 30<sup>th</sup> June-02<sup>nd</sup> July; Chhattisgarh on 26<sup>th</sup> June.
- **Fairly Widespread to Widespread** rainfall likely over Vidarbha during 28<sup>th</sup>-29<sup>th</sup> June; Chhattisgarh during 27<sup>th</sup> June-02<sup>nd</sup> July.
- **Isolated thunderstorm, lightning & gusty winds (speed reaching 40-50 kmph gusting to 60 kmph)** likely over West Madhya Pradesh during 27<sup>th</sup>-29<sup>th</sup> June; East Madhya Pradesh during 26<sup>th</sup>-29<sup>th</sup> June; Vidarbha during 26<sup>th</sup>-28<sup>th</sup> June, **with gusty winds (speed reaching 30-40 kmph gusting to 50 kmph)** likely over Chhattisgarh during 26<sup>th</sup>-29<sup>th</sup> June.
- **Isolated heavy rainfall** likely over Vidarbha, Chhattisgarh during 27<sup>th</sup>-28<sup>th</sup> June.
- **Thundersquall (wind speed reaching 50-60 kmph gusting to 70 kmph)** likely over West Madhya Pradesh on 26<sup>th</sup> June.

\*Red color warning does not mean "Red Alert" Red color warning means "Take Action"

Forecast and warning for any day is valid from 0830 hours IST of day till 0830 hours IST of next day

For more details kindly visit <https://mausam.imd.gov.in> or contact 011-2434-4599

(Service to the nation since 1875)

**East India:**

- **Fairly Widespread to Widespread** rainfall likely over Andaman & Nicobar Islands and Sub-Himalayan West Bengal & Sikkim during 26<sup>th</sup> June-02<sup>nd</sup> July; Gangetic West Bengal during 29<sup>th</sup> June-02<sup>nd</sup> July; Bihar, Jharkhand and Odisha during 28<sup>th</sup> June-02<sup>nd</sup> July.
- **Isolated to Scattered** rainfall likely over Gangetic West Bengal during 26<sup>th</sup>-28<sup>th</sup> June; Bihar, Jharkhand and Odisha during 26<sup>th</sup>-27<sup>th</sup> June.
- **Isolated thunderstorm, lightning & gusty winds (speed reaching 40-50 kmph gusting to 60 kmph)** likely over Andaman & Nicobar Islands during 26<sup>th</sup> June-02<sup>nd</sup> July; Jharkhand and Sub-Himalayan West Bengal & Sikkim on 26<sup>th</sup> June; Gangetic West Bengal during 29<sup>th</sup> June-02<sup>nd</sup> July; Bihar on 27<sup>th</sup> June and during 29<sup>th</sup> June-02<sup>nd</sup> July; Odisha during 26<sup>th</sup>-28<sup>th</sup> June, **with gusty winds (speed reaching 30-40 kmph gusting to 50 kmph)** likely over Sub-Himalayan West Bengal & Sikkim during 27<sup>th</sup>-29<sup>th</sup> June; Gangetic West Bengal during 26<sup>th</sup>-28<sup>th</sup> June.
- **Isolated heavy rainfall** likely over Andaman & Nicobar Islands during 28<sup>th</sup>-29<sup>th</sup> June; Sub-Himalayan West Bengal & Sikkim during 27<sup>th</sup>-29<sup>th</sup> June and on 1<sup>st</sup> & 02<sup>nd</sup> July; Bihar during 26<sup>th</sup>-30<sup>th</sup> June; Odisha during 28<sup>th</sup> June-02<sup>nd</sup> July with isolated **very heavy rainfall** also likely over Sub-Himalayan West Bengal & Sikkim on 26<sup>th</sup> and 30<sup>th</sup> June.
- **Thundersquall (wind speed reaching 50-60 kmph gusting to 70 kmph)** likely over Bihar on 26<sup>th</sup> and 28<sup>th</sup> June.
- **Isolated heavy to very heavy rainfall with extremely heavy rainfall** over northern parts of Sub-Himalayan West Bengal & Sikkim during 27<sup>th</sup>-29<sup>th</sup> June.

**Northeast India:**

- **Fairly Widespread to Widespread** rainfall likely over Arunachal Pradesh, Assam & Meghalaya and Nagaland, Manipur, Mizoram & Tripura during 26<sup>th</sup> June-02<sup>nd</sup> July.
- **Isolated thunderstorm & lightning** likely over Arunachal Pradesh during 26<sup>th</sup>-29<sup>th</sup> June.
- **Isolated heavy rainfall** likely over Arunachal Pradesh on 26<sup>th</sup> June and during 30<sup>th</sup> June-02<sup>nd</sup> July; Assam & Meghalaya on 26<sup>th</sup> and 28<sup>th</sup> June; Nagaland, Manipur, Mizoram & Tripura during 26<sup>th</sup>-29<sup>th</sup> June with isolated **very heavy rainfall** also likely over Arunachal Pradesh during 27<sup>th</sup>-29<sup>th</sup> June; Assam & Meghalaya on 27<sup>th</sup> June and during 29<sup>th</sup> June-02<sup>nd</sup> July.
- **Isolated heavy to very heavy rainfall with extremely heavy rainfall** over Assam & Meghalaya on 28<sup>th</sup> June.

**West India:**

- **Fairly Widespread to Widespread** rainfall likely over Konkan & Goa during 26<sup>th</sup> June-02<sup>nd</sup> July; Madhya Maharashtra and Marathwada on 26<sup>th</sup> June.
- **Isolated to Scattered** rainfall likely over Madhya Maharashtra and Marathwada during 27<sup>th</sup> June-02<sup>nd</sup> July; Gujarat Region and Saurashtra & Kutch during 26<sup>th</sup> June-02<sup>nd</sup> July.
- **Isolated thunderstorm & lightning** likely over Konkan & Goa and Madhya Maharashtra during 26<sup>th</sup>-29<sup>th</sup> June.
- **Isolated heavy rainfall** likely over Konkan & Goa during 26<sup>th</sup> June-02<sup>nd</sup> July; Madhya Maharashtra during 26<sup>th</sup>-29<sup>th</sup> June.

**South Peninsular India:**

- **Isolated to Scattered** rainfall likely over Tamil Nadu, Puducherry & Karaikal during 26<sup>th</sup> June-02<sup>nd</sup> July; Coastal Andhra Pradesh & Yanam during 29<sup>th</sup> June-02<sup>nd</sup> July; Rayalaseema on 26<sup>th</sup> June and during 28<sup>th</sup> June-02<sup>nd</sup> July.
- **Fairly Widespread to Widespread** rainfall likely over Coastal Karnataka, Kerala & Mahe and Lakshadweep during 26<sup>th</sup> June-02<sup>nd</sup> July; Interior Karnataka and Telangana during 26<sup>th</sup> June-02<sup>nd</sup> July; Coastal Andhra Pradesh & Yanam during 26<sup>th</sup>-28<sup>th</sup> June; Rayalaseema on 27<sup>th</sup> June.
- **Isolated thunderstorm, lightning & gusty winds (speed reaching 40-50 kmph gusting to 60 kmph)** likely over Coastal Andhra Pradesh & Yanam, Rayalaseema and Tamil Nadu, Puducherry & Karaikal during 26<sup>th</sup>-29<sup>th</sup> June; Kerala & Mahe and Lakshadweep during 27<sup>th</sup>-29<sup>th</sup> June, **with gusty winds (speed reaching 30-40 kmph gusting to 50 kmph)** likely over Kerala & Mahe and Lakshadweep on 26<sup>th</sup> June; Telangana during 26<sup>th</sup> June-02<sup>nd</sup> July.

**\*Red color warning does not mean "Red Alert" Red color warning means "Take Action"**

**Forecast and warning for any day is valid from 0830 hours IST of day till 0830 hours IST of next day**

**For more details kindly visit <https://mausam.imd.gov.in> or contact 011-2434-4599**

**(Service to the nation since 1875)**

- Isolated **heavy rainfall** likely over Tamil Nadu, Puducherry & Karaikal during 27<sup>th</sup>-30<sup>th</sup> June; Kerala & Mahe during 27<sup>th</sup>-28<sup>th</sup> June and during 30<sup>th</sup> June-02<sup>nd</sup> July; Lakshadweep during 28<sup>th</sup>-29<sup>th</sup> June; Coastal Karnataka during 25<sup>th</sup>-28<sup>th</sup> June; North Interior Karnataka during 29<sup>th</sup> June-02<sup>nd</sup> July; South Interior Karnataka on 28<sup>th</sup> June and on 1<sup>st</sup> & 02<sup>nd</sup> July; Coastal Andhra Pradesh & Yanam during 26<sup>th</sup>-30<sup>th</sup> June; Telangana during 26<sup>th</sup> June-02<sup>nd</sup> July with isolated **very heavy rainfall** also likely over Kerala & Mahe on 29<sup>th</sup> June; Coastal Karnataka during 29<sup>th</sup> June-02<sup>nd</sup> July; South Interior Karnataka during 29<sup>th</sup>-30<sup>th</sup> June.
- **Strong Surface Winds** likely over Karnataka on 26<sup>th</sup> June.

**Heat Wave, Hot & Humid weather and Warm Night conditions warning:**

- **Heat wave** conditions very likely in isolated pockets over Jharkhand on 26<sup>th</sup> June; East Uttar Pradesh during 26<sup>th</sup>-28<sup>th</sup> June with **severe heat wave** conditions in isolated pockets during 26<sup>th</sup>-27<sup>th</sup> June.

**Forecast of maximum/day temperatures:**

- Maximum temperatures likely to rise by 2-3°C over Northwest India till 28<sup>th</sup> and fall by 3-5°C thereafter.
- Maximum temperatures likely to rise by 2-4°C over Central India till 28<sup>th</sup> and no significant change thereafter.
- No significant change in maximum temperatures likely over the rest parts of country till 01<sup>st</sup> July, 2026.

**Main Weather Observations:**

❖ **Rainfall distribution** (from 0830 hours IST of yesterday to 0530 hours IST of today): **at most places** over Gangetic West Bengal, Nagaland, Manipur, Mizoram & Tripura, Himachal Pradesh, Marathwada, Vidarbha, Andaman & Nicobar Islands, Coastal Karnataka, South Interior Karnataka and Kerala & Mahe; **at many places** over Assam & Meghalaya, Odisha, Jharkhand, East Madhya Pradesh, Punjab, Jammu & Kashmir and Ladakh, East Rajasthan, West Madhya Pradesh, Konkan & Goa, Coastal Andhra Pradesh & Yanam, East Uttar Pradesh, Telangana, Chhattisgarh, Rayalaseema, Tamilnadu Puducherry & Karaikal, North Interior Karnataka and Lakshadweep; **Dry** over rest of the country.

❖ **Significant rainfall recorded(in cm)** (from 0830 hours IST of yesterday to 0530 hours IST of today): **Gangetic West Bengal:** Kolkata-alipur (dist Kolkata) 9; **Konkan & Goa** : Ratnagiri (dist Ratnagiri) 6; **East Uttar Pradesh:** Gorakhpur (dist Gorakhpur) 4.

❖ **Heavy Rainfall observed** (from 0830 hours IST of yesterday to 0530 hours IST of today): **Heavy rain** at isolated places over Gangetic West Bengal.

❖ **Minimum Temperature Departures (as on 25-06-2026):** **markedly above normal(> 5.1°C)** at isolated places over Assam & Meghalaya, Nagaland, Manipur, Mizoram & Tripura, Sub Himalayan West Bengal & Sikkim, Bihar, East Uttar Pradesh, West Uttar Pradesh, Himachal Pradesh, West Rajasthan, West Madhya Pradesh, East Madhya Pradesh, Gujarat Region and Saurashtra & Kutch. **appreciably above normal(3.1°C to 5.0°C)** at few places over Andaman & Nicobar Islands, Bihar and East Madhya Pradesh; at isolated places over Assam & Meghalaya, Sub Himalayan West Bengal & Sikkim, Gangetic West Bengal, Odisha, East Uttar Pradesh, West Uttar Pradesh, West Madhya Pradesh, Chhattisgarh, Coastal Andhra Pradesh & Yanam and Tamil Nadu, Puducherry & Karaikal. **above normal(1.6°C to 3.0°C)** at many places over Gujarat Region and Kerala & Mahe; at few places over Andaman & Nicobar Islands, Gangetic West Bengal, Odisha, East Uttar Pradesh, Chhattisgarh, Coastal Andhra Pradesh & Yanam, Tamil Nadu, Puducherry & Karaikal and Lakshadweep; at isolated places over Assam & Meghalaya, Nagaland, Manipur, Mizoram & Tripura, Sub Himalayan West Bengal & Sikkim, Bihar, West Uttar Pradesh, Haryana-Chandigarh-Delhi, Himachal Pradesh, Jammu-KashmirLadakh-Gilgit-Baltistan-Muzaffarabad, West Rajasthan, East Rajasthan, East Madhya Pradesh, Saurashtra & Kutch, Madhya Maharashtra and Rayalaseema. **near normal(-1.5°C to 1.5°C)** at many places over Assam & Meghalaya, Nagaland, Manipur, Mizoram & Tripura, Sub Himalayan West Bengal & Sikkim, Himachal Pradesh, East Rajasthan, Saurashtra & Kutch, Konkan & Goa, Tamil Nadu, Puducherry & Karaikal and Lakshadweep; at most places over Arunachal Pradesh, Jharkhand, Uttarakhand, Madhya Maharashtra, Marathwada, Vidarbha, Telangana, Rayalaseema, Coastal Karnataka, North Interior Karnataka and South Interior Karnataka; at few places over Gangetic West Bengal, Odisha, Bihar, East Uttar Pradesh, West Uttar Pradesh, Punjab, Jammu-KashmirLadakh-Gilgit-Baltistan-Muzaffarabad, West Rajasthan, West Madhya Pradesh, East Madhya Pradesh, Gujarat Region, Chhattisgarh, Coastal Andhra Pradesh & Yanam and Kerala & Mahe; at isolated places over Haryana-Chandigarh-Delhi. **The lowest minimum temperature** of 18.0°C was reported at HALFLONG (ASSAM) over the Plains of India.

❖ **Maximum Temperature Departures (as on 25-06-2026):** **markedly above normal(> 5.1°C)** at few places over Bihar and East Uttar Pradesh; at isolated places over Odisha, Jharkhand, West Uttar Pradesh. **appreciably above normal(3.1°C to 5.0°C)** at many places over Uttarakhand and Chhattisgarh; at most places over Arunachal Pradesh; at few places over Assam & Meghalaya, Haryana-Chandigarh-Delhi, Gujarat Region and North Interior Karnataka; at isolated places over Sub Himalayan West Bengal & Sikkim, Gangetic West Bengal, Himachal Pradesh, East Madhya Pradesh, Saurashtra & Kutch, Madhya Maharashtra, Vidarbha, Telangana and Kerala & Mahe. **above normal(1.6°C to 3.0°C)** at few places over Punjab, Coastal Andhra Pradesh & Yanam and Rayalaseema; at isolated places over Andaman & Nicobar Island and East Rajasthan. **Appreciably below normal(-5.0°C to -3.1°C)** at isolated places over **Marathwada, Jammu-Kashmir-Ladakh-Gilgit-Baltistan-Muzaffarabad;** **below normal(-3.0°C to -1.6°C)** at isolated places over **Konkan & Goa, Mizoram and West Madhya Pradesh.** **The highest maximum temperature** of 43.0°C was reported at ALLAHABAD\_GHOORPUR (UTTAR PRADESH).

\*Red color warning does not mean "Red Alert" Red color warning means "Take Action"

Forecast and warning for any day is valid from 0830 hours IST of day till 0830 hours IST of next day

For more details kindly visit <https://mausam.imd.gov.in> or contact 011-2434-4599

(Service to the nation since 1875)

**Meteorological Analysis (Based on 0530 hours IST)**

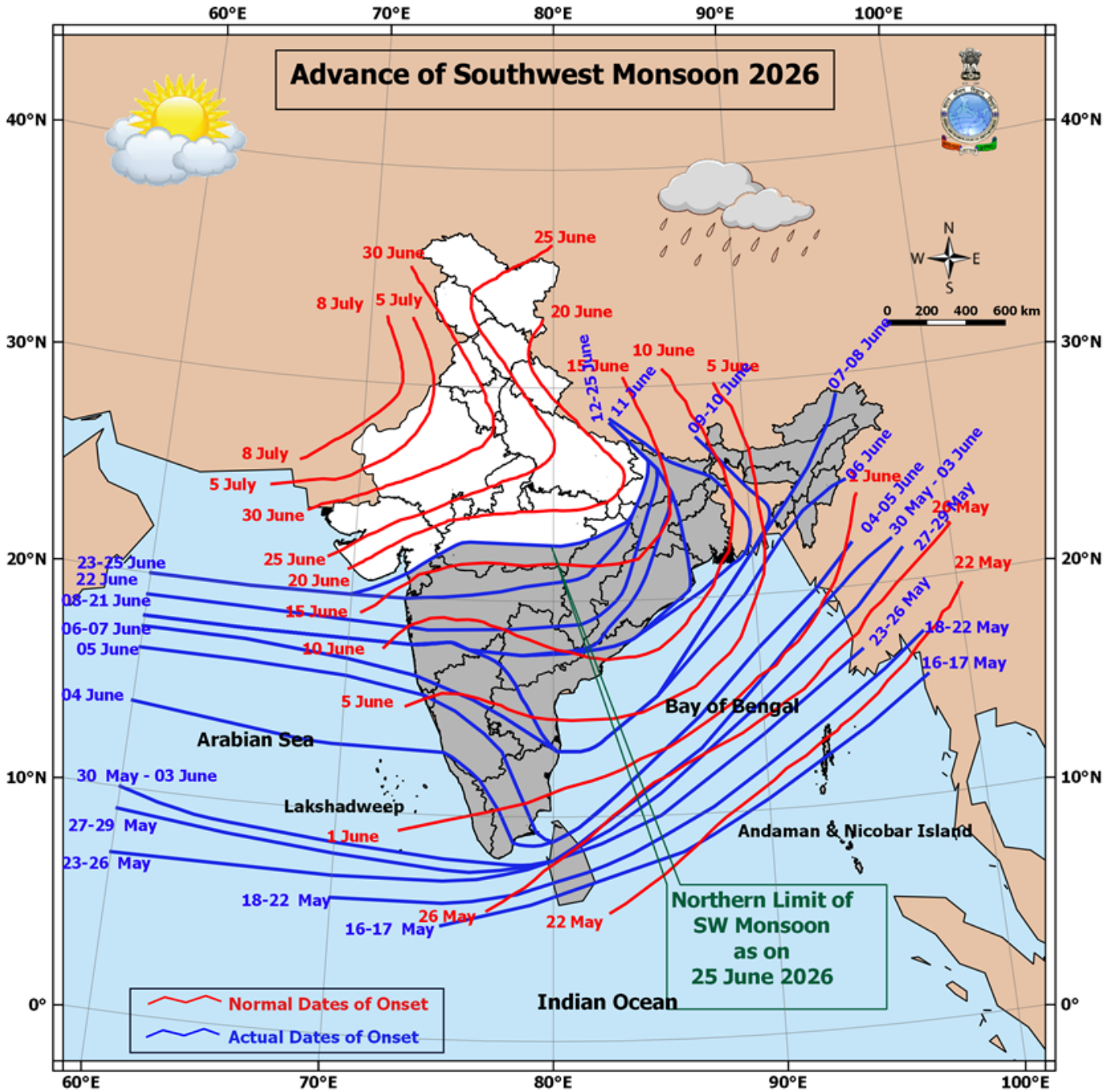
- The **Northern Limit of Monsoon** continues to pass through 20°N/60°E, 20°N/65°E, 20°N/70°E, Surat, Indore, Mandla, Daltonganj, Motihari and 28.3°N/83°E as on 25<sup>th</sup> June.
- **Conditions are favourable** for further advance of southwest monsoon into some more parts of North Arabian Sea, Gujarat, Madhya Pradesh, remaining parts of Chhattisgarh, Jharkhand & Bihar, some parts of Uttar Pradesh & Uttarakhand during next 3-4 days.
- The **seasonal trough** at mean sea level from north Rajasthan to Bihar across Haryana and Uttar Pradesh extending upto 0.9 km above mean sea level persists.
- The **upper air cyclonic circulation** over Southeast Assam & neighbourhood at 0.9 km above mean sea level persists.
- The **Western Disturbance** as a cyclonic circulation over Haryana & neighbourhood between 3.1 & 7.6 km above mean sea level persists.
- The **upper air cyclonic circulation** over central Pakistan & adjoining north Rajasthan at 1.5 km above mean sea level persists.
- The **upper air cyclonic circulation** over Northern parts of central Madhya Pradesh & neighbourhood at 1.5 km above mean sea level persists.
- The **upper air cyclonic circulation** over northeast & adjoining eastcentral Bay of Bengal between 4.5 & 7.6 km above mean sea level persists.
- The **upper air cyclonic circulation** over southeast parts of Madhya Pradesh & neighbourhood between 3.1 km to 5.8 km above mean sea level persists.
- The **trough** from the upper **air cyclonic circulation** over southeast parts of Madhya Pradesh & neighbourhood to Eastcentral Arabian Sea across North Maharashtra between 3.1 km to 5.8 km above mean sea levels persists.

**\*Red color warning does not mean "Red Alert" Red color warning means "Take Action"**

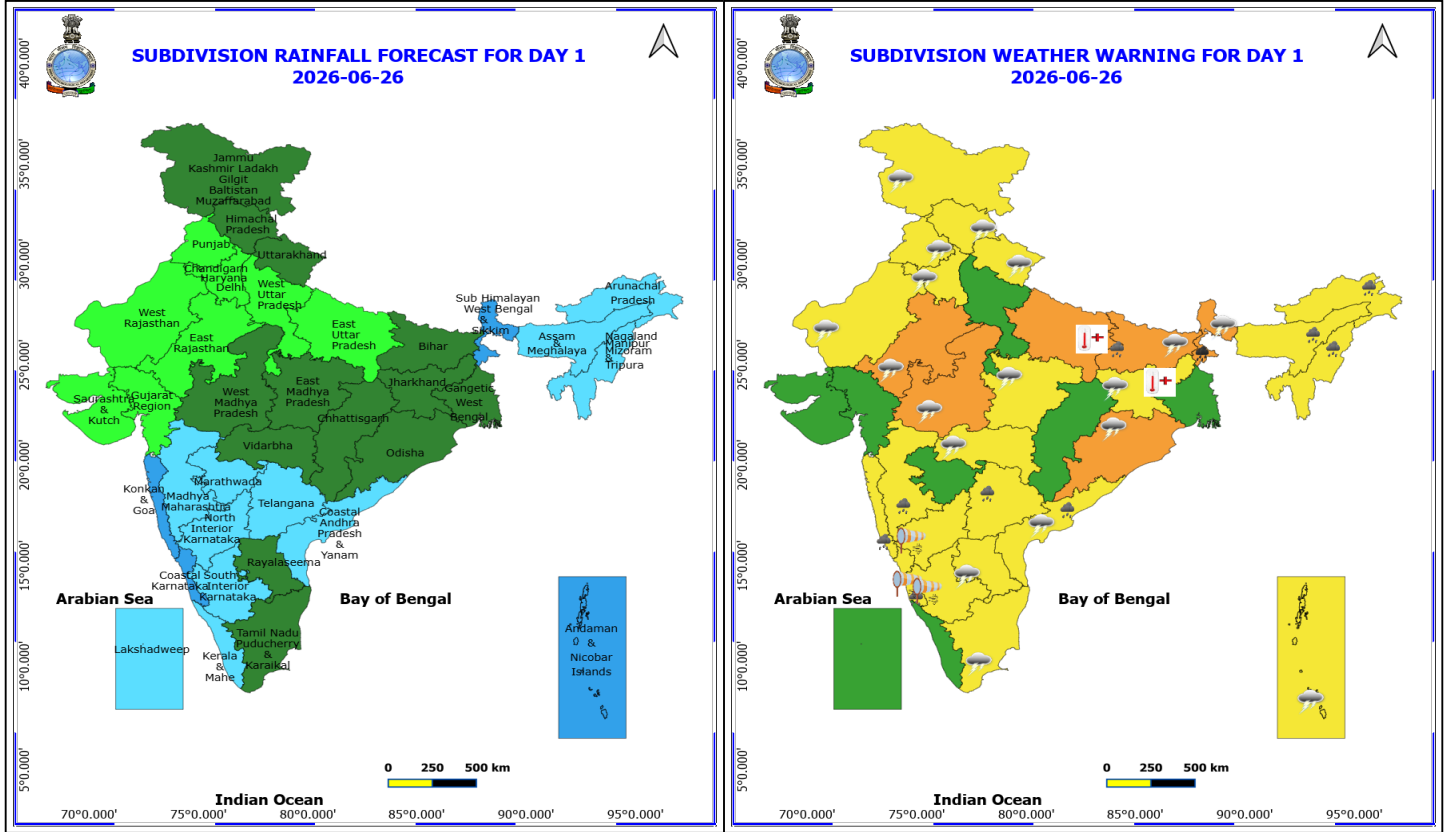
**Forecast and warning for any day is valid from 0830 hours IST of day till 0830 hours IST of next day**

**For more details kindly visit <https://mausam.imd.gov.in> or contact 011-2434-4599**

**(Service to the nation since 1875)**



\*Red color warning does not mean "Red Alert" Red color warning means "Take Action"  
Forecast and warning for any day is valid from 0830 hours IST of day till 0830 hours IST of next day  
For more details kindly visit <https://mausam.imd.gov.in> or contact 011-2434-4599  
(Service to the nation since 1875)



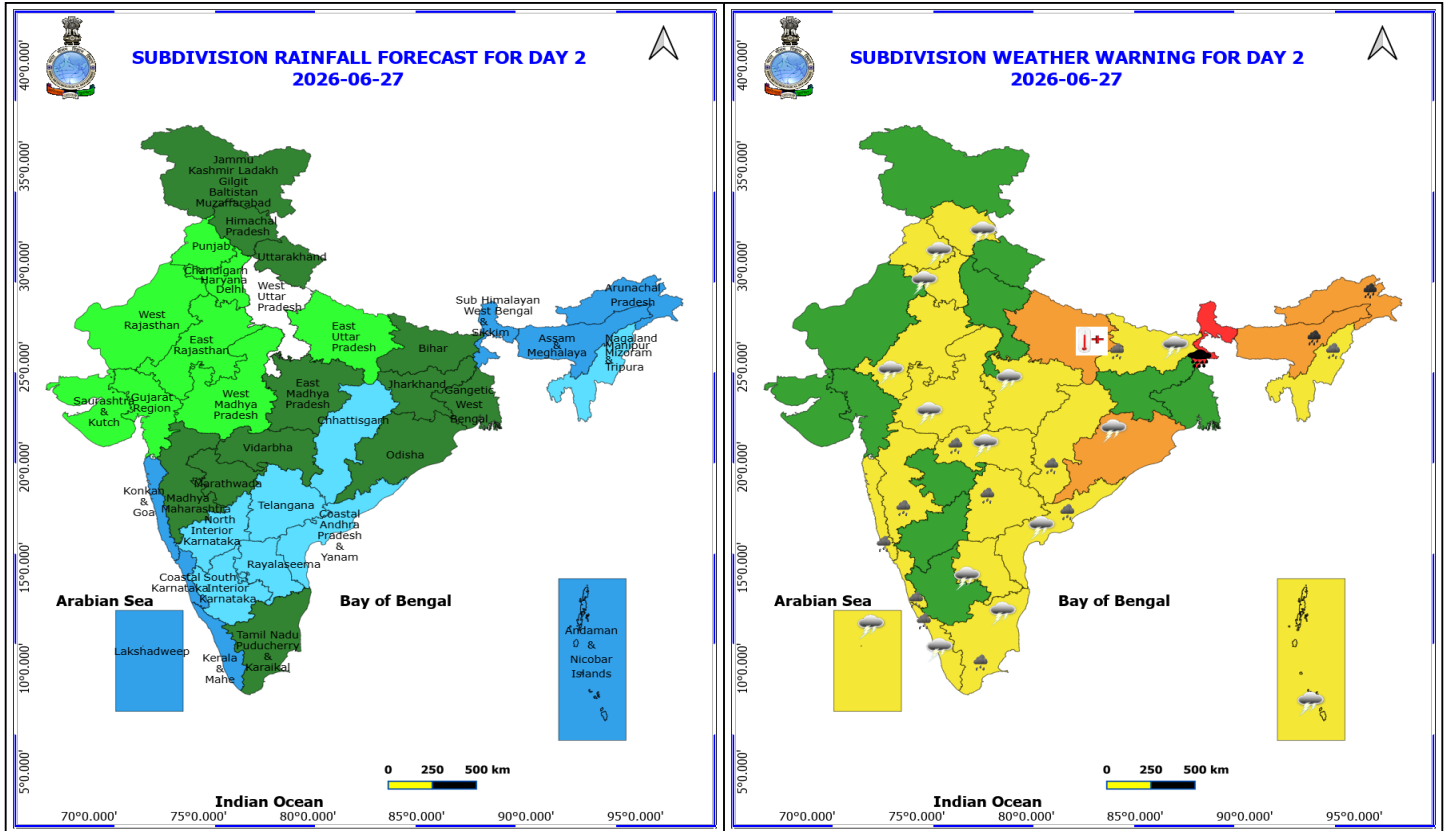
**26 June (Day 1)**

- ❖ **Heavy to Very Heavy Rainfall** very likely at isolated places over Sub Himalayan West Bengal & Sikkim.
- ❖ **Heavy Rainfall** very likely at isolated places over Arunachal Pradesh, Assam & Meghalaya, Bihar, Coastal Andhra Pradesh, Coastal Karnataka, Konkan & Goa, Madhya Maharashtra, Nagaland, Manipur, Mizoram and Tripura and Telangana.
- ❖ **Thundersquall with wind speed reaching(50-60kmph)** very likely at isolated places over Bihar, East Rajasthan and West Madhya Pradesh.
- ❖ **Thunderstorm accompanied with lightning & gusty winds(40-50kmph)** very likely at isolated places over Andaman & Nicobar Islands, Andhra Pradesh, East Madhya Pradesh, Haryana, Chandigarh & Delhi, Himachal Pradesh, Jammu-Kashmir-Ladakh-Gilgit-Baltistan-Muzaffarabad, Jharkhand, Odisha, Punjab, Sub Himalayan West Bengal & Sikkim, Tamil Nadu Puducherry & Karaikal, Uttarakhand, Vidarbha and West Rajasthan.
- ❖ **Thunderstorm accompanied with lightning & gusty winds(30-40kmph)** very likely at isolated places over Chhattisgarh, Gangetic West Bengal, Kerala & Mahe, Lakshadweep and Telangana.
- ❖ **Thunderstorm accompanied with Lightning** very likely at isolated places over Arunachal Pradesh, Konkan & Goa and Madhya Maharashtra.
- ❖ **Strong Surface Winds** very likely at isolated places over Karnataka.
- ❖ **Heat Wave conditions** very likely at isolated places over Jharkhand.
- ❖ **Heat Wave to Severe Heat Wave conditions** very likely at isolated places over East Uttar Pradesh.

**\*Red color warning does not mean "Red Alert" Red color warning means "Take Action"**  
Forecast and warning for any day is valid from 0830 hours IST of day till 0830 hours IST of next day  
For more details kindly visit <https://mausam.imd.gov.in> or contact 011-2434-4599  
(Service to the nation since 1875)



- ❖ Arabian Sea: Squally wind with speed 45-55 kmph gusting to 65 kmph is likely to prevail along and off Somalia coasts some parts of southwest & adjoining westcentral Arabian Sea.
- ❖ Squally weather with wind speed 40-50 gusting to 60 kmph is likely to prevail along & off Konkan & Goa coasts adjoining eastcentral Arabian sea.
- ❖ Bay of Bengal: Squally Weather with wind speed 40-50 kmph gusting to 60 kmph is likely to prevail over Gulf of Mannar adjoining Comorin area, along and off south Sri Lanka, few parts of southwest Bay of Bengal along and off south Andhra Pradesh coast adjoining few parts of westcentral Bay of Bengal.



**27 June (Day 2)**

- ❖ **Heavy to Very Heavy Rainfall with isolated Extremely Heavy Rainfall** very likely at isolated places over Sub Himalayan West Bengal & Sikkim.
- ❖ **Heavy to Very Heavy Rainfall** very likely at isolated places over Arunachal Pradesh and Assam & Meghalaya.
- ❖ **Heavy Rainfall** very likely at isolated places over Bihar, Chhattisgarh, Coastal Andhra Pradesh, Coastal Karnataka, Kerala & Mahe, Konkan & Goa, Madhya Maharashtra, Nagaland, Manipur, Mizoram and Tripura, Tamil Nadu Puducherry & Karaikal, Telangana and Vidarbha.
- ❖ **Thunderstorm accompanied with lightning & gusty winds(40-50kmph)** very likely at isolated places over Andaman & Nicobar Islands, Andhra Pradesh, Bihar, East Rajasthan, Haryana, Chandigarh & Delhi, Himachal Pradesh, Kerala & Mahe, Lakshadweep, Madhya Pradesh, Odisha, Punjab, Tamil Nadu Puducherry & Karaikal and Vidarbha.
- ❖ **Thunderstorm accompanied with lightning & gusty winds(30-40kmph)** very likely at isolated places over Chhattisgarh, Telangana, West Bengal & Sikkim and West Rajasthan.
- ❖ **Thunderstorm accompanied with Lightning** very likely at isolated places over Arunachal Pradesh, Konkan & Goa and Madhya Maharashtra.
- ❖ **Heat Wave to Severe Heat Wave conditions** very likely at isolated places over East Uttar Pradesh.
- ❖ **Arabian Sea:** Squally wind with speed 45-55 kmph gusting to 65 kmph is likely to prevail along and off Somalia coasts, some parts of southwest adjoining westcentral Arabian Sea, Over North Oman coast adjoining northwest Arabian Sea.

**\*Red color warning does not mean "Red Alert" Red color warning means "Take Action"**

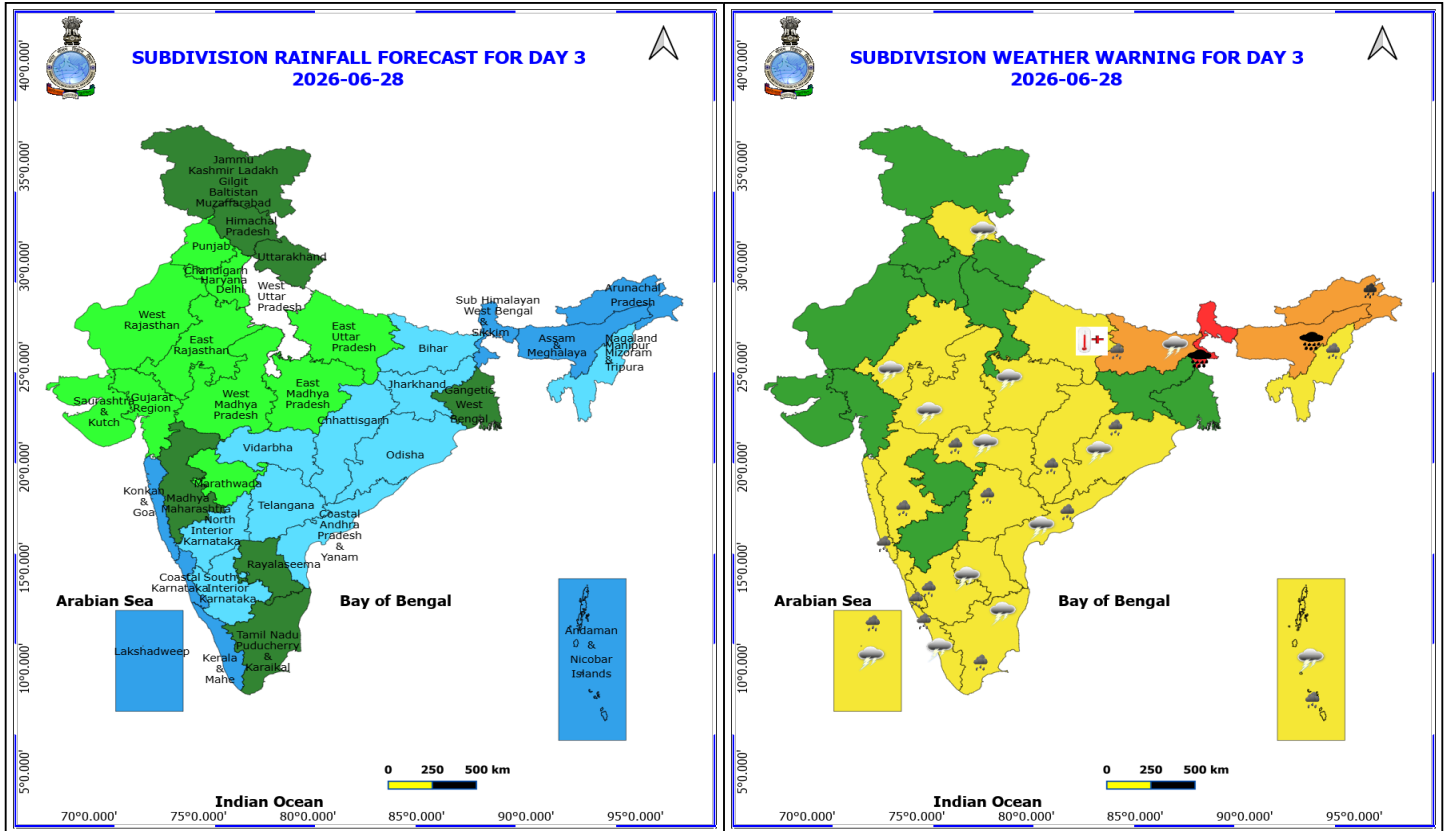
**Forecast and warning for any day is valid from 0830 hours IST of day till 0830 hours IST of next day**

**For more details kindly visit <https://mausam.imd.gov.in> or contact 011-2434-4599**

**(Service to the nation since 1875)**



- ❖ Squally weather with wind speed 40-50 gusting to 60 kmph is likely to prevail along & off south Konkan, Goa, Karnataka, Kerala coasts, Lakshadweep area & adjoining eastcentral Arabian sea.
- ❖ Bay of Bengal: Squally Weather with wind speed 40-50 kmph gusting to 60 kmph is likely to prevail over Gulf of Mannar adjoining Comorin area, few parts of southwest Bay of Bengal.



## 28 June (Day 3)

- ❖ **Heavy to Very Heavy Rainfall with isolated Extremely Heavy Rainfall** very likely at isolated places over Assam & Meghalaya and Sub Himalayan West Bengal & Sikkim.
- ❖ **Heavy to Very Heavy Rainfall** very likely at isolated places over Arunachal Pradesh.
- ❖ **Heavy Rainfall** very likely at isolated places over Andaman & Nicobar Islands, Bihar, Chhattisgarh, Coastal Andhra Pradesh, Coastal Karnataka, Kerala & Mahe, Konkan & Goa, Lakshadweep, Madhya Maharashtra, Nagaland, Manipur, Mizoram and Tripura, Odisha, South Interior Karnataka, Tamil Nadu Puducherry & Karaikal, Telangana and Vidarbha.
- ❖ **Thundersquall with wind speed reaching(50-60kmph)** very likely at isolated places over Bihar.
- ❖ **Thunderstorm accompanied with lightning & gusty winds(40-50kmph)** very likely at isolated places over Andaman & Nicobar Islands, Andhra Pradesh, East Rajasthan, Himachal Pradesh, Kerala & Mahe, Lakshadweep, Madhya Pradesh, Odisha, Tamil Nadu Puducherry & Karaikal and Vidarbha.
- ❖ **Thunderstorm accompanied with lightning & gusty winds(30-40kmph)** very likely at isolated places over Chhattisgarh, Telangana, West Bengal & Sikkim and West Rajasthan.
- ❖ **Thunderstorm accompanied with Lightning** very likely at isolated places over Arunachal Pradesh, Konkan & Goa and Madhya Maharashtra.
- ❖ **Heat Wave conditions** very likely at isolated places over East Uttar Pradesh.
- ❖ **Arabian Sea:** Squally wind with speed 45-55 kmph gusting to 65 kmph is likely to prevail along and off Somalia coasts, some parts of southwest & adjoining westcentral Arabian Sea; Over North Oman coast adjoining northwest

**\*Red color warning does not mean "Red Alert" Red color warning means "Take Action"**

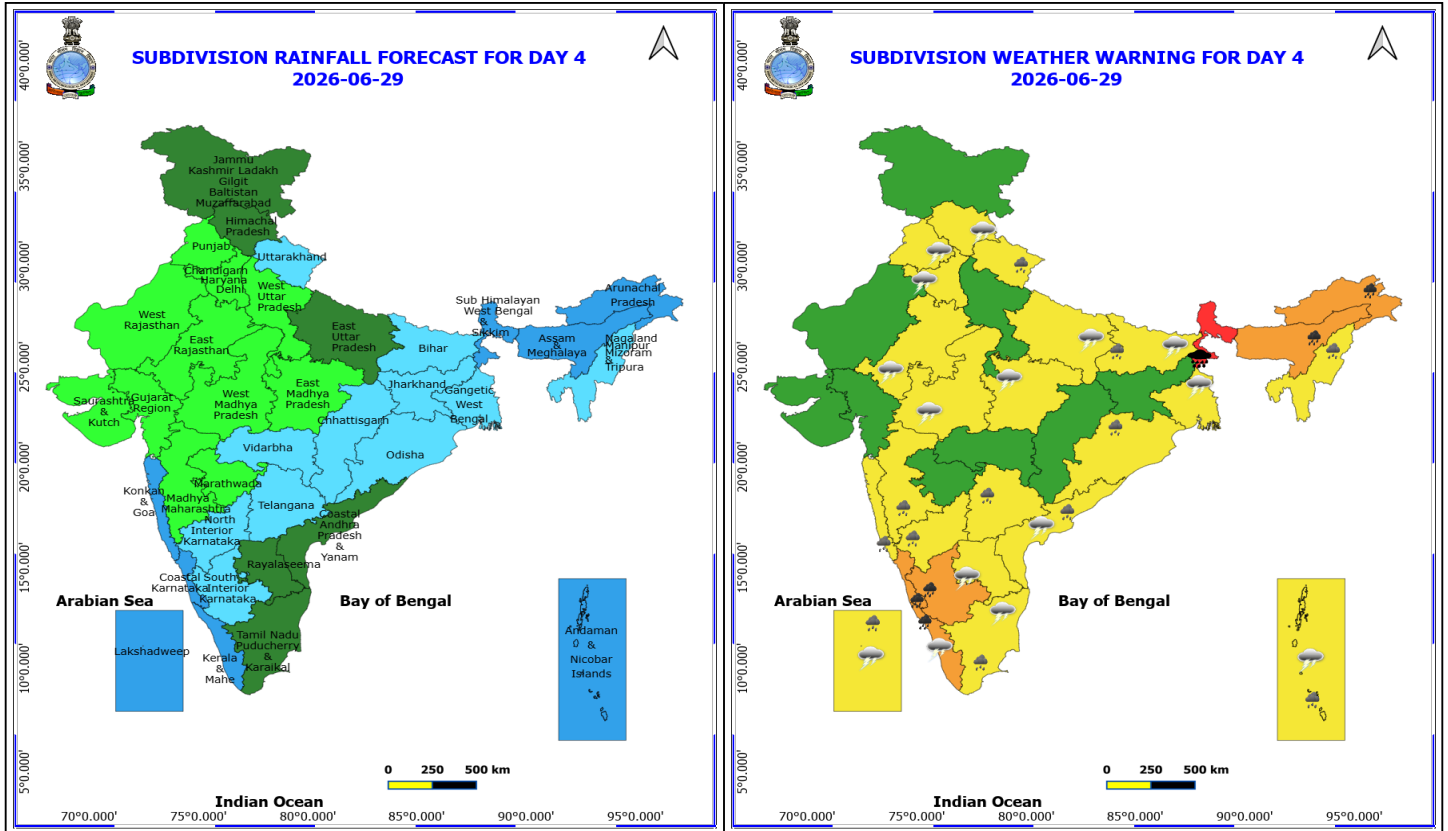
Forecast and warning for any day is valid from 0830 hours IST of day till 0830 hours IST of next day

For more details kindly visit <https://mausam.imd.gov.in> or contact 011-2434-4599

(Service to the nation since 1875)

Arabian Sea.

- ❖ Squally weather with wind speed 40-50 gusting to 60 kmph is likely to prevail along & off south Konkan, Goa, Karnataka, Kerala coasts, Lakshadweep area & adjoining eastcentral Arabian sea.
- ❖ Bay of Bengal: Squally Weather with wind speed 40-50 kmph gusting to 60 kmph is likely to prevail over Gulf of Mannar adjoining Comorin area, south Sri Lanka adjoining some parts of southwest Bay of Bengal.
- ❖ Squally wind with speed 45-55 kmph gusting to 65 kmph is likely to prevail over few parts of southwest Bay of Bengal.



## 29 June (Day 4)

- ❖ **Heavy to Very Heavy Rainfall with isolated Extremely Heavy Rainfall** likely at isolated places over Sub Himalayan West Bengal & Sikkim.
- ❖ **Heavy to Very Heavy Rainfall** likely at isolated places over Arunachal Pradesh, Assam & Meghalaya, Coastal Karnataka, Kerala & Mahe and South Interior Karnataka.
- ❖ **Heavy Rainfall** likely at isolated places over Andaman & Nicobar Islands, Bihar, Coastal Andhra Pradesh, Konkan & Goa, Lakshadweep, Madhya Maharashtra, Nagaland, Manipur, Mizoram and Tripura, North Interior Karnataka, Odisha, Tamil Nadu Puducherry & Karaikal, Telangana and Uttarakhand.
- ❖ **Thunderstorm accompanied with lightning & gusty winds(40-50kmph)** likely at isolated places over Andaman & Nicobar Islands, Andhra Pradesh, Bihar, East Rajasthan, East Uttar Pradesh, Gangetic West Bengal, Haryana, Chandigarh & Delhi, Himachal Pradesh, Kerala & Mahe, Lakshadweep, Madhya Pradesh, Punjab and Tamil Nadu Puducherry & Karaikal.
- ❖ **Thunderstorm accompanied with lightning & gusty winds(30-40kmph)** likely at isolated places over Chhattisgarh, Sub Himalayan West Bengal & Sikkim, Telangana and West Rajasthan.
- ❖ **Thunderstorm accompanied with Lightning** likely at isolated places over Arunachal Pradesh, Konkan & Goa, Madhya Maharashtra and Uttarakhand.
- ❖ Arabian Sea: Squally wind with speed 45-55 kmph gusting to 65 kmph is likely to prevail along and off Somalia coasts, some parts of southwest & adjoining westcentral Arabian Sea; Over North Oman coast adjoining northwest Arabian Sea.
- ❖ Squally weather with wind speed 40-50 gusting to 60 kmph is likely to prevail along & off south Konkan, Goa,

**\*Red color warning does not mean "Red Alert" Red color warning means "Take Action"**

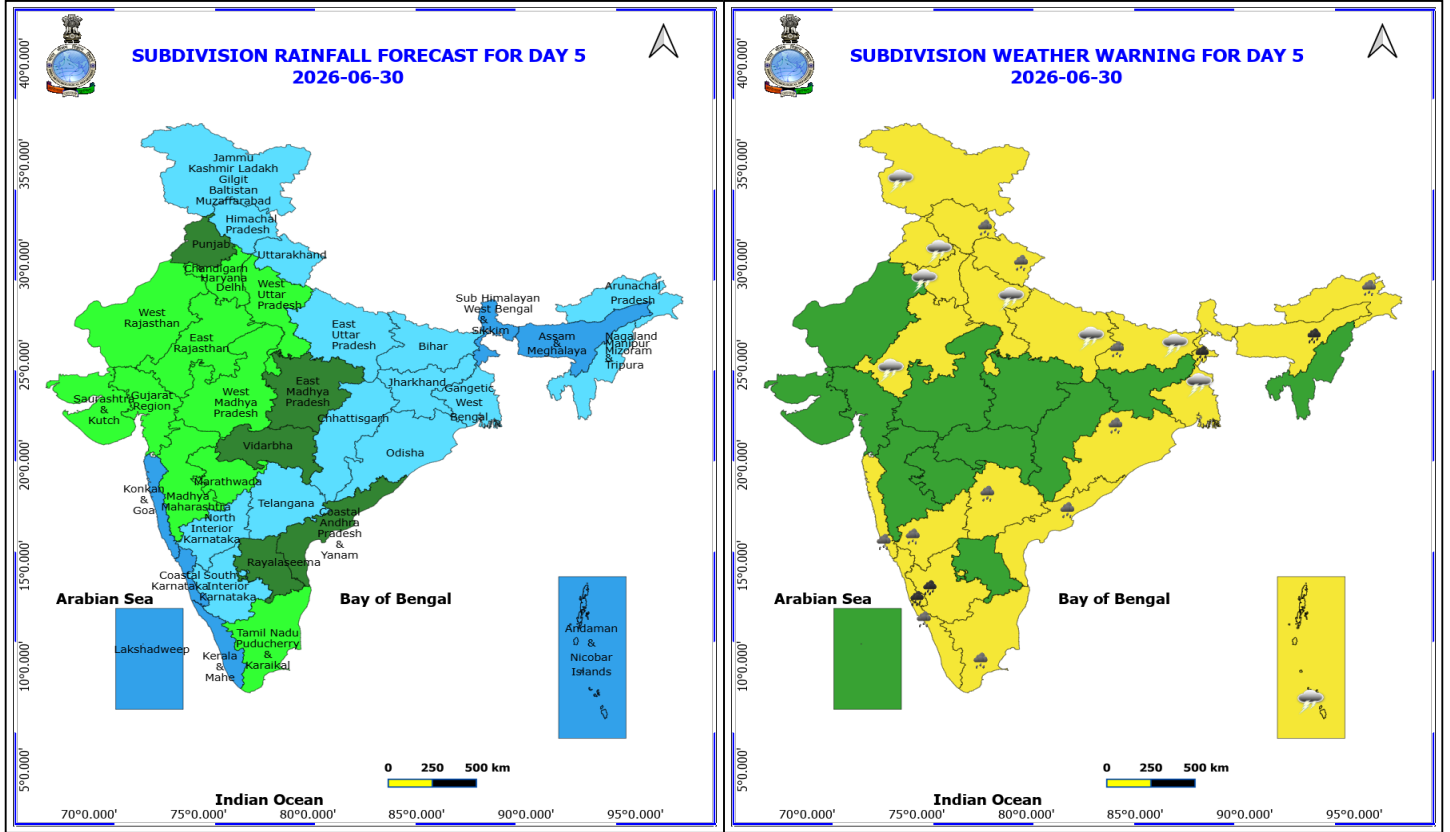
Forecast and warning for any day is valid from 0830 hours IST of day till 0830 hours IST of next day

For more details kindly visit <https://mausam.imd.gov.in> or contact 011-2434-4599

(Service to the nation since 1875)

Karnataka, Kerala coasts, Lakshadweep area & adjoining eastcentral Arabian sea.

- ❖ Bay of Bengal: Squally Weather with wind speed 40-50 kmph gusting to 60 kmph is likely to prevail over Gulf of Mannar adjoining Comorin area, south Sri Lanka adjoining some parts of southwest & adjoining southeast Bay of Bengal.
- ❖ Squally wind with speed 45-55 kmph gusting to 65 kmph is likely to prevail over some parts of southwest & adjoining southeast Bay of Bengal.



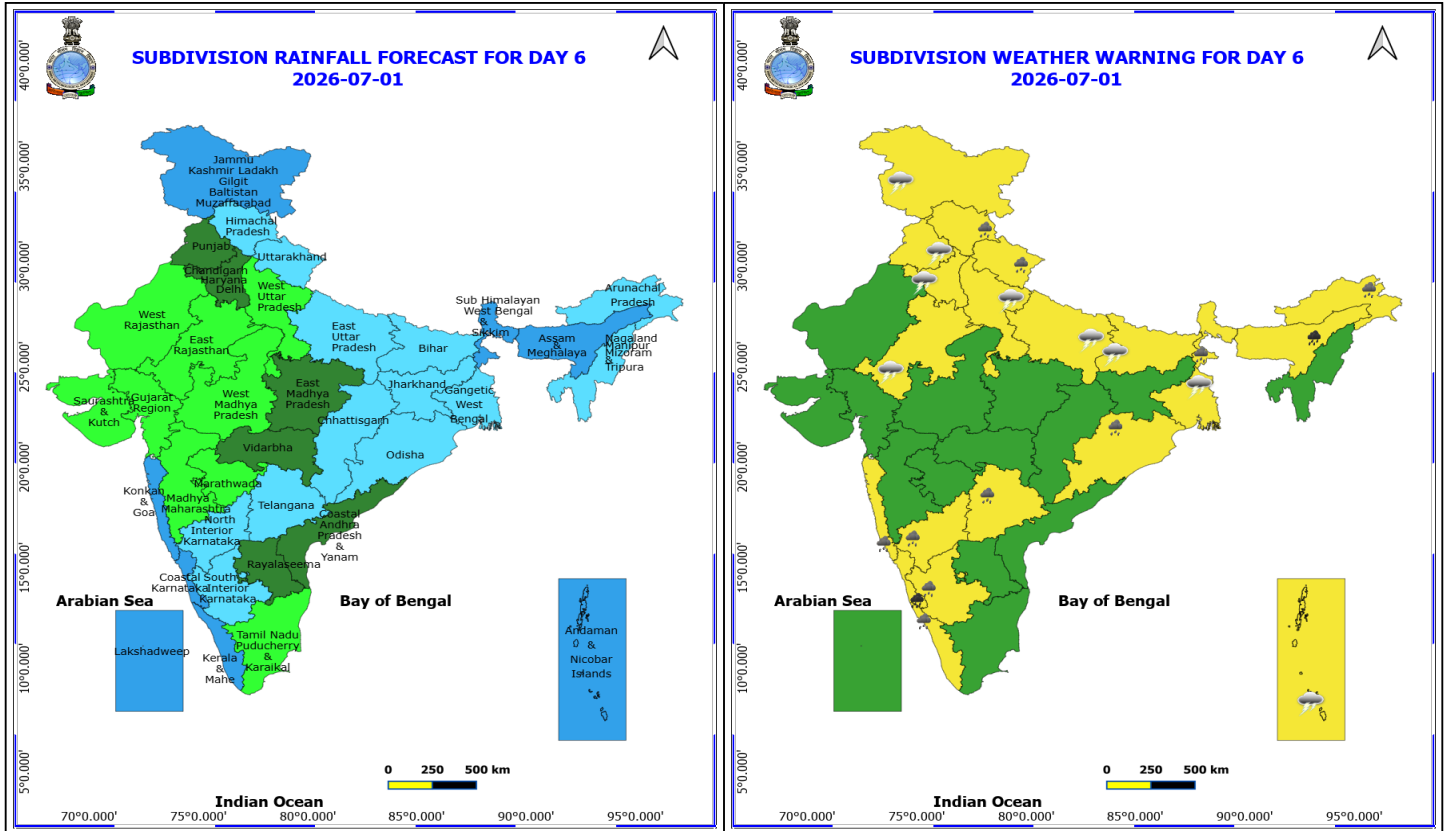
**30 June (Day 5)**

- ❖ **Heavy to Very Heavy Rainfall** likely at isolated places over Assam & Meghalaya, Coastal Karnataka, South Interior Karnataka and Sub Himalayan West Bengal & Sikkim.
- ❖ **Heavy Rainfall** likely at isolated places over Arunachal Pradesh, Bihar, Coastal Andhra Pradesh, Himachal Pradesh, Kerala & Mahe, Konkan & Goa, North Interior Karnataka, Odisha, Tamil Nadu Puducherry & Karaikal, Telangana and Uttarakhand.
- ❖ **Thunderstorm accompanied with lightning & gusty winds(40-50kmph)** likely at isolated places over Andaman & Nicobar Islands, Bihar, East Rajasthan, Gangetic West Bengal, Haryana, Chandigarh & Delhi, Jammu-Kashmir-Ladakh-Gilgit-Baltistan-Muzaffarabad, Punjab and Uttar Pradesh.
- ❖ **Thunderstorm accompanied with lightning & gusty winds(30-40kmph)** likely at isolated places over Telangana and West Rajasthan.
- ❖ **Thunderstorm accompanied with Lightning** likely at isolated places over Uttarakhand.

**No Fishermen Warning**

**\*Red color warning does not mean "Red Alert" Red color warning means "Take Action"**  
Forecast and warning for any day is valid from 0830 hours IST of day till 0830 hours IST of next day  
For more details kindly visit <https://mausam.imd.gov.in> or contact 011-2434-4599

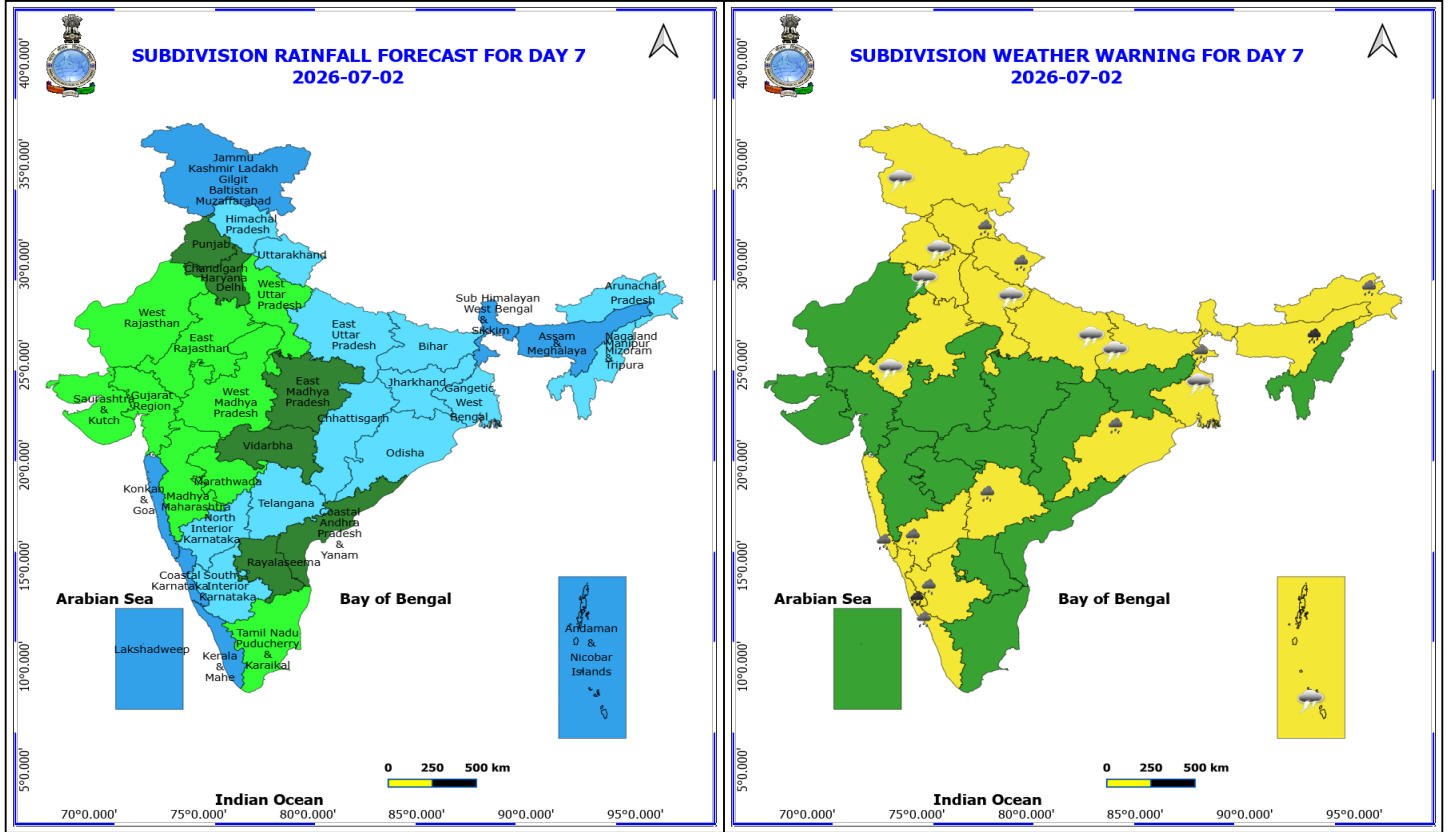
(Service to the nation since 1875)



**1 July (Day 6)**

- ❖ **Heavy to Very Heavy Rainfall** likely at isolated places over Assam & Meghalaya and Coastal Karnataka.
- ❖ **Heavy Rainfall** likely at isolated places over Arunachal Pradesh, Himachal Pradesh, Interior Karnataka, Kerala & Mahe, Konkan & Goa, Odisha, Sub Himalayan West Bengal & Sikkim, Telangana and Uttarakhand.
- ❖ **Thunderstorm accompanied with lightning & gusty winds(40-50kmph)** likely at isolated places over Andaman & Nicobar Islands, Bihar, East Rajasthan, Gangetic West Bengal, Haryana, Chandigarh & Delhi, Jammu-Kashmir-Ladakh-Gilgit-Baltistan-Muzaffarabad, Punjab and Uttar Pradesh.
- ❖ **Thunderstorm accompanied with lightning & gusty winds(30-40kmph)** likely at isolated places over Telangana and West Rajasthan.
- ❖ **Thunderstorm accompanied with Lightning** likely at isolated places over Uttarakhand.

**No Fishermen Warning**



**2 July (Day 7)**

- ❖ **Heavy to Very Heavy Rainfall** likely at isolated places over Assam & Meghalaya and Coastal Karnataka.
- ❖ **Heavy Rainfall** likely at isolated places over Arunachal Pradesh, Himachal Pradesh, Interior Karnataka, Kerala & Mahe, Konkan & Goa, Odisha, Sub Himalayan West Bengal & Sikkim, Telangana and Uttarakhand.
- ❖ **Thunderstorm accompanied with lightning & gusty winds(40-50kmph)** likely at isolated places over Andaman & Nicobar Islands, Bihar, East Rajasthan, Gangetic West Bengal, Haryana, Chandigarh & Delhi, Jammu-Kashmir-Ladakh-Gilgit-Baltistan-Muzaffarabad, Punjab and Uttar Pradesh.
- ❖ **Thunderstorm accompanied with lightning & gusty winds(30-40kmph)** likely at isolated places over Telangana and West Rajasthan.
- ❖ **Thunderstorm accompanied with Lightning** likely at isolated places over Uttarakhand.

**No Fishermen Warning**

**\*Red color warning does not mean "Red Alert" Red color warning means "Take Action"**  
Forecast and warning for any day is valid from 0830 hours IST of day till 0830 hours IST of next day  
For more details kindly visit <https://mausam.imd.gov.in> or contact 011-2434-4599

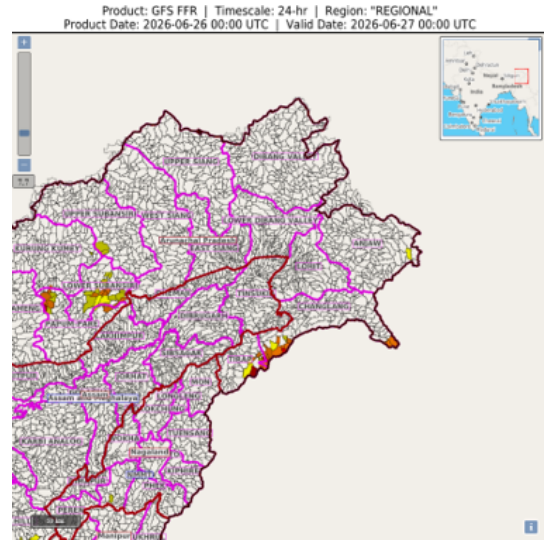
(Service to the nation since 1875)

### Flash Flood Warnings

**24 hours Outlook for the Flash Flood Risk (FFR) till 0530 IST of 27-06-2026 :**

**Low to Moderate flash flood risk** likely over few watersheds & neighbourhoods of following Met Sub-divisions during next 24 hours.

**Arunachal Pradesh:** Changlang Papum Pare, Lower Subansiri and Triap districts





## Table-1

### 7 Days Rainfall Forecast

S.No.	Subdivision	26- Jun	27- Jun	28- Jun	29- Jun	30- Jun	1- Jul	2- Jul
		Day 1	Day 2	Day 3	Day 4	Day 5	Day 6	Day 7
1	ANDAMAN & NICOBAR ISLANDS	WS	WS	WS	WS	WS	WS	WS
2	ARUNACHAL PRADESH	FWS	WS	WS	WS	FWS	FWS	FWS
3	ASSAM & MEHGHALAYA	FWS	WS	WS	WS	WS	WS	WS
4	N. M. M. & T.	FWS	FWS	FWS	FWS	FWS	FWS	FWS
5	S.H. WEST BENGAL & SIKKIM	WS	WS	WS	WS	WS	WS	WS
6	GANGETIC WEST BENGAL	SCT	SCT	SCT	FWS	FWS	FWS	FWS
7	ODISHA	SCT	SCT	FWS	FWS	FWS	FWS	FWS
8	JHARKHAND	SCT	SCT	FWS	FWS	FWS	FWS	FWS
9	BIHAR	SCT	SCT	FWS	FWS	FWS	FWS	FWS
10	EAST UTTAR PRADESH	ISOL	ISOL	ISOL	SCT	FWS	FWS	FWS
11	WEST UTTAR PRADESH	ISOL	DRY	DRY	ISOL	ISOL	ISOL	ISOL
12	UTTARAKHAND	SCT	SCT	SCT	FWS	FWS	FWS	FWS
13	HARYANA, CHD & DELHI	ISOL	ISOL	ISOL	ISOL	ISOL	SCT	SCT
14	PUNJAB	ISOL	ISOL	ISOL	ISOL	SCT	SCT	SCT
15	HIMACHAL PRADESH	SCT	SCT	SCT	SCT	FWS	FWS	FWS
16	JAMMU AND KASHMIR AND LADAKH	SCT	SCT	SCT	SCT	FWS	WS	WS
17	WEST RAJASTHAN	ISOL	ISOL	ISOL	ISOL	ISOL	ISOL	ISOL
18	EAST RAJASTHAN	ISOL	ISOL	ISOL	ISOL	ISOL	ISOL	ISOL
19	WEST MADHYA PRADESH	SCT	ISOL	ISOL	ISOL	ISOL	ISOL	ISOL
20	EAST MADHYA PRADESH	SCT	SCT	ISOL	ISOL	SCT	SCT	SCT
21	GUJRAT REGION	ISOL	ISOL	ISOL	ISOL	ISOL	ISOL	ISOL
22	SAURASHTRA & KUTCH	ISOL	ISOL	ISOL	ISOL	ISOL	ISOL	ISOL
23	KONKAN & GOA	WS	WS	WS	WS	WS	WS	WS
24	MADHYA MAHARASHTRA	FWS	SCT	SCT	ISOL	ISOL	ISOL	ISOL
25	MARATHWADA	FWS	SCT	ISOL	ISOL	ISOL	ISOL	ISOL
26	VIDARBHA	SCT	SCT	FWS	FWS	SCT	SCT	SCT
27	CHATTISGARH	SCT	FWS	FWS	FWS	FWS	FWS	FWS
28	COASTAL ANDHRA PRADESH	FWS	FWS	FWS	SCT	SCT	SCT	SCT
29	TELANGANA	FWS	FWS	FWS	FWS	FWS	FWS	FWS
30	RAYALASEEMA	SCT	FWS	SCT	SCT	SCT	SCT	SCT
31	TAMILNADU & PUDUCHERRY	SCT	SCT	SCT	SCT	ISOL	ISOL	ISOL
32	COSTAL KARNATAKA	WS	WS	WS	WS	WS	WS	WS
33	NORTH INTERIOR KARNATAKA	FWS	FWS	FWS	FWS	FWS	FWS	FWS
34	SOUTH INTERIOR KARNATAKA	FWS	FWS	FWS	FWS	FWS	FWS	FWS
35	KERALA	FWS	WS	WS	WS	WS	WS	WS
36	LAKSHDWEEP	FWS	WS	WS	WS	WS	WS	WS

Legend	Category	%Stations
WS	Widespread/Most Places	76-100
FWS	Fairly Widespread/Many Places	51-75
SCT	Scattered/ A Few Places	26-50
ISOL	Isolated Places	1-25
DRY	No Rain	0

\*Red color warning does not mean "Red Alert" Red color warning means "Take Action"  
Forecast and warning for any day is valid from 0830 hours IST of day till 0830 hours IST of next day  
For more details kindly visit <https://mausam.imd.gov.in> or contact 011-2434-4599

(Service to the nation since 1875)

Fig. 1: Maximum Temperatures Dated 2026-06-25

Fig. 2: Departure of Maximum Temp. Dated 2026-06-25

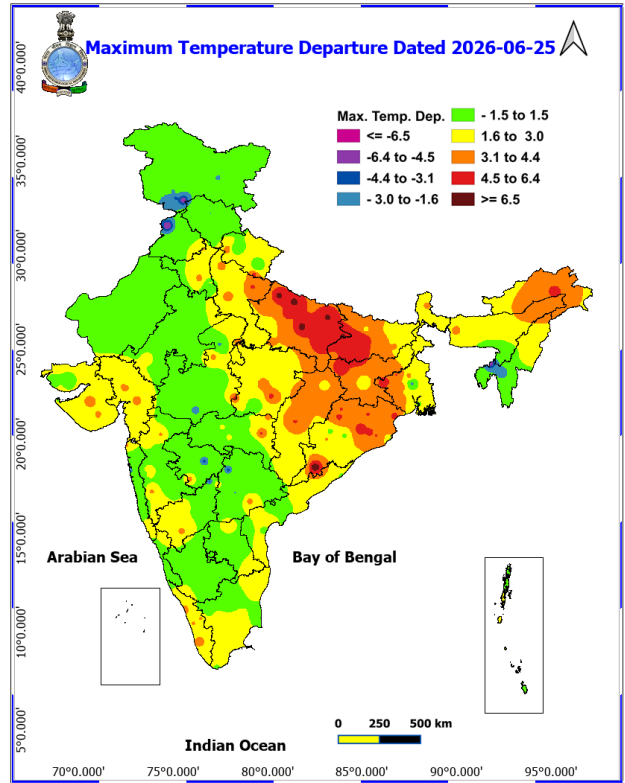
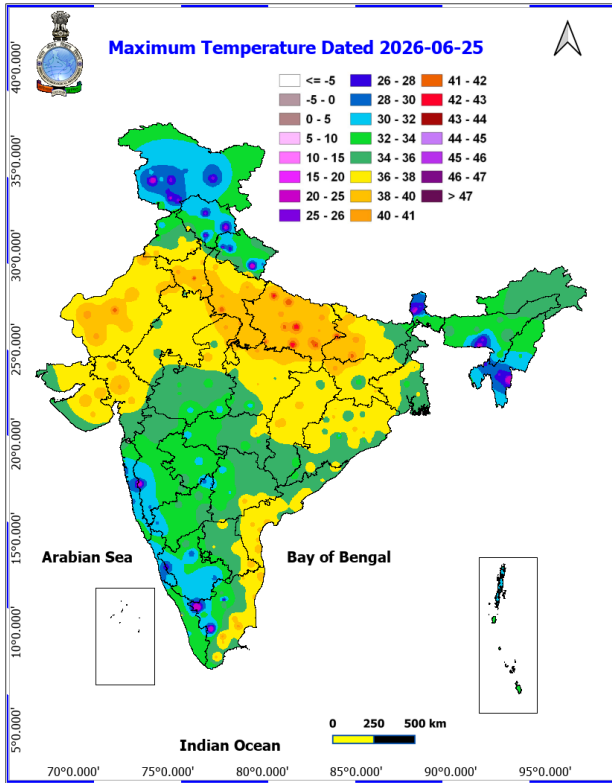
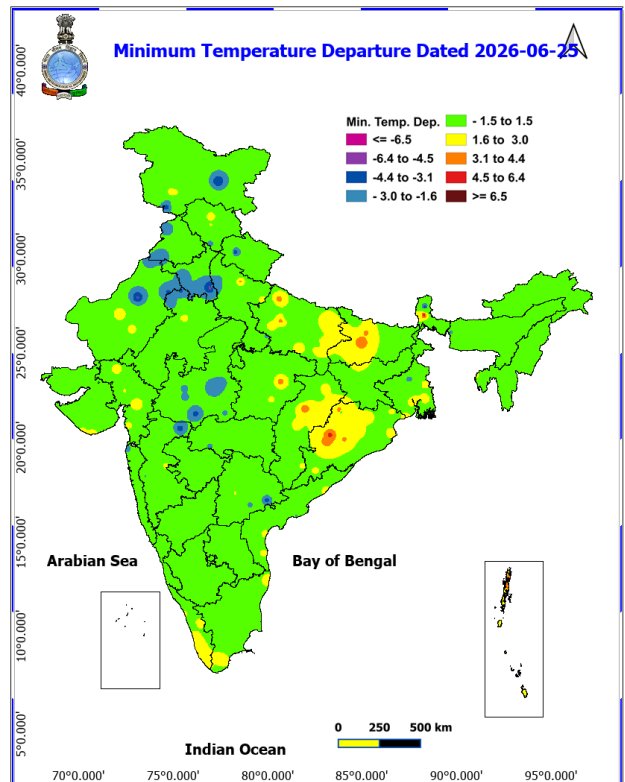
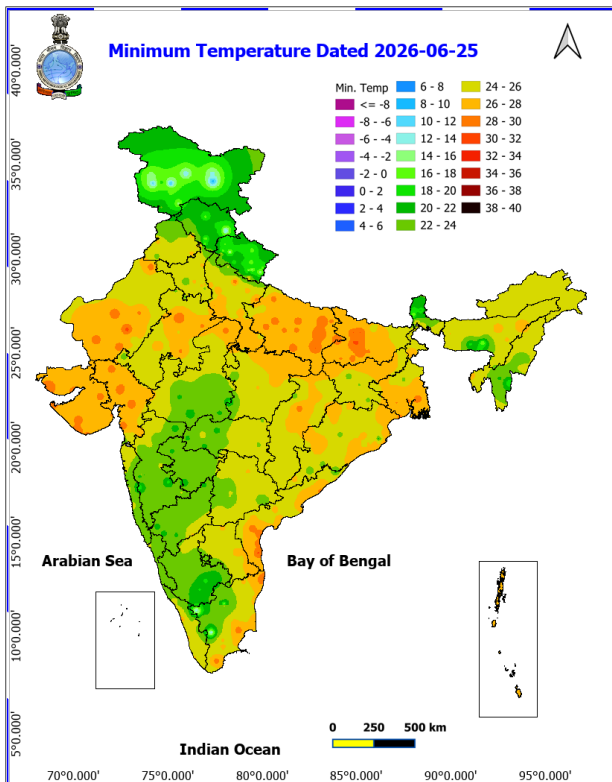
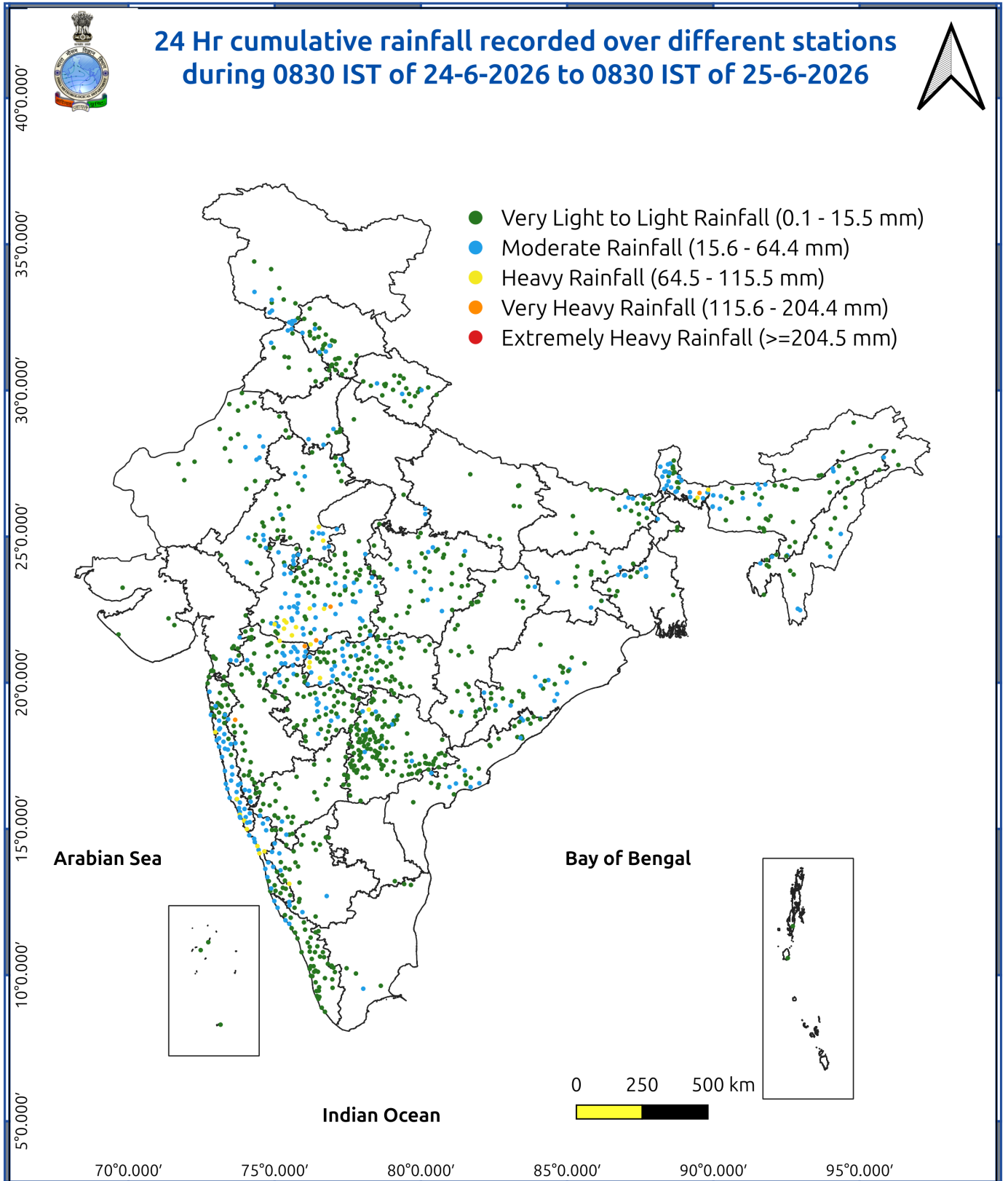


Fig. 3: Minimum Temperatures Dated 2026-06-25

Fig. 4: Departure of Minimum Temp. Dated 2026-06-25





## Impact and Actions

### Impact Expected & Action Suggested due to heavy/very heavy rainfall over

- Isolated **heavy to very heavy rainfall with extremely heavy rainfall** over northern parts of Sub-Himalayan West Bengal & Sikkim during 27<sup>th</sup> -29<sup>th</sup> June; Assam & Meghalaya on 28<sup>th</sup> June.
- Isolated **very heavy rainfall** also likely over Sub-Himalayan West Bengal & Sikkim on 26<sup>th</sup> June and on 30<sup>th</sup> June; Arunachal Pradesh during 27<sup>th</sup>-29<sup>th</sup> June; Assam & Meghalaya on 27<sup>th</sup> June and during 29<sup>th</sup> June-2<sup>nd</sup> July; Kerala & Mahe on 29<sup>th</sup> June; Coastal Karnataka during 29<sup>th</sup> June-2<sup>nd</sup> July; South Interior Karnataka during 29<sup>th</sup>-30<sup>th</sup> June.

### Impact Expected

- Localized Flooding of roads, water logging in low lying areas and closure of underpasses mainly in urban areas.
- Occasional reduction in visibility due to heavy rainfall.
- Disruption of traffic in major cities due to water logging in roads leading to increased travel time.
- Minor damage to kutcha roads.
- Possibilities of damage to vulnerable structure.
- Localized Landslides/Mudslides/landslips/mudslips/landsinks/mudsinks.
- Damage to horticulture and standing crops in some areas due to inundation.
- It may lead to riverine flooding in some river catchments (for riverine flooding please visit Web page of CWC)

### Action Suggested

- Check for traffic congestion on your route before leaving for your destination.
- Follow any traffic advisories that are issued in this regard.
- Avoid going to areas that face the water logging problems often.
- Avoid staying in vulnerable structure.

### Impact expected and action suggested due to isolated thunderstorm with lightning, gusty/squally winds & hailstorm over

- **Thundersquall (wind speed reaching 50-60 kmph gusting to 70 kmph)** likely over East Rajasthan, West Madhya Pradesh on 26<sup>th</sup> June; Bihar on 26<sup>th</sup>, 28<sup>th</sup> June;

### Impact expected:

- Breaking of tree branches, uprooting of large avenue trees. Large dead limbs blown from trees. Damage to Standing crops.
- Minor to Major damage to banana and papaya trees.
- Minor to major damage to power and communication lines due to breaking of branches.
- Strong wind/hail may damage plantation, horticulture and standing crops.
- Partial damage to vulnerable structures due to strong winds.
- Minor damage to kutcha houses/walls and huts.
- Loose objects may fly.

### Action suggested:

- People are advised to keep a watch on the weather for worsening conditions and be ready to move to safer places accordingly.
- Stay indoors, close windows & doors and avoid travel if possible.
- Take safe shelters; do not take shelter under trees.
- Do not lie on concrete floors and do not lean against concrete walls.
- Unplug electrical/ electronic appliances.

**\*Red color warning does not mean "Red Alert" Red color warning means "Take Action"**  
Forecast and warning for any day is valid from 0830 hours IST of day till 0830 hours IST of next day  
For more details kindly visit <https://mausam.imd.gov.in> or contact 011-2434-4599

(Service to the nation since 1875)

- Immediately get out of water bodies.
- Keep away from all the objects that conduct electricity.

#### Impact expected and action suggested due to Heat wave conditions:

- **Heat wave** conditions very likely in isolated pockets over Jharkhand on 26th June; East Uttar Pradesh during 26th-28th June with **severe heat wave** conditions in isolated pockets during 26th & 27th June.

#### Alert Areas

- High temperature & increased likelihood of heat illness symptoms in people who are either exposed to sun for a prolonged period or doing heavy work.
- High health concern for vulnerable people e.g. infants, elderly, people with chronic diseases.
- Avoid heat exposure— keep cool. Avoid dehydration.
- Drink sufficient water- even if not thirsty.
- Use ORS, homemade drinks like lassi, torani (rice water), lemon water, buttermilk, etc. to keep yourself hydrated.

#### Agromet advisories for various parts of the country

##### Agromet advisories for likely impact of Heavy Rainfall

- In **Arunachal Pradesh**, ensure proper drainage in vegetables, maize, rice nursery and other crop fields to prevent waterlogging. Harvest mature vegetables and fruits to avoid crop losses.
- In **Assam**, ensure proper drainage arrangements for quick removal of excess water from rice nurseries, jute, ginger, turmeric, vegetables, banana, citrus and papaya. Avoid nursery sowing of *Sali* rice and sowing of jute, maize and vegetables during heavy rainfall. Cover the already seeded area with natural mulching materials like straw, farm residues etc. Provide mechanical support to the sugarcane crop to prevent lodging.
- In **Meghalaya**, ensure proper drainage channels in rice nurseries, maize, ginger, cowpea, vegetable fields and banana plantations. Protect young seedlings from direct exposure to heavy rainfall. Use propping (bamboo or wooden poles) to support heavily laden plants.
- In **Manipur**, undertake harvesting of pre-*kharif* rice and store the produce in safe place. Avoid transplanting of rice during heavy rainfall. Ensure proper drainage in soybean, chilli, ginger, turmeric, banana and other crop fields and newly transplanted seedlings and nursery crops to avoid water stagnation.
- In **Tripura**, ensure adequate drainage arrangements to remove excess water from rice and vegetable fields during heavy rainfall.
- In **Sub Himalayan West Bengal and Sikkim**, avoid nursery sowing of rice during heavy rainfall; protect already sown rice nursery beds with straw mulch, dry grass, or temporary polythene / agro-net covers to prevent seed washing, poor germination and seedling loss. Drain out excess water from jute, ginger, chilli, tomato and dalley khorsani fields and nurseries of *kharif* rice, finger millet and vegetables.
- In **Keralam**, drain out excess water from banana, coconut, cardamom, ginger, black pepper and vegetables. Provide staking support in banana plants and strengthen the pandals of vegetable crops. Avoid transplanting of rice during heavy rain.
- In **Coastal Karnataka**, ensure proper drainage in rice seedbeds and fruit orchards to prevent water stagnation.
- In **Konkan and Goa** and *ghat* areas of **Madhya Maharashtra**, make arrangement to drain out excess water from nurseries of rice, finger millet and vegetables.
- In **Coastal Andhra Pradesh**, maintain drainage in paddy, maize, and horticultural crops (mango, banana) and avoid water stagnation in fields.

##### Agromet advisories for likely impact of High temperatures / Heat Waves

\*Red color warning does not mean "Red Alert" Red color warning means "Take Action"  
Forecast and warning for any day is valid from 0830 hours IST of day till 0830 hours IST of next day  
For more details kindly visit <https://mausam.imd.gov.in> or contact 011-2434-4599

(Service to the nation since 1875)

- In **Jharkhand, Bihar** and **East Uttar Pradesh**, apply light irrigation as per requirement in vegetable crops and fruit orchards. Carry out mulching with crop residue, straw or polythene to conserve soil moisture. Use temporary shade nets to protect the fruit plants from high temperatures.

#### Agromet advisories for likely impact of Thunderstorm / Gusty Winds

- Shift the harvested produce in safer places or cover the produce with tarpaulin sheets in the fields. Tie the harvested crops securely and cover them to minimize the risk of displacement from strong surface winds.
- Provide mechanical support to horticultural crops and staking or support to vegetables and young fruit plants / fruit-bearing plants to avoid lodging due to strong winds.

#### Livestock / Poultry / Fisheries

- Keep the animals inside the shed during heavy rainfall and provide them balanced feed.
- Store the feed and fodder in a safe place to prevent spoilage.
- In regions with high temperatures and heat wave conditions, provide clean, cool drinking water to animals, and cover the roofs of poultry sheds with grass to reduce the adverse effects of heat.
- Construct an outlet with proper netting around the ponds to drain excess water, thereby preventing fish from escaping in the event of overflow.

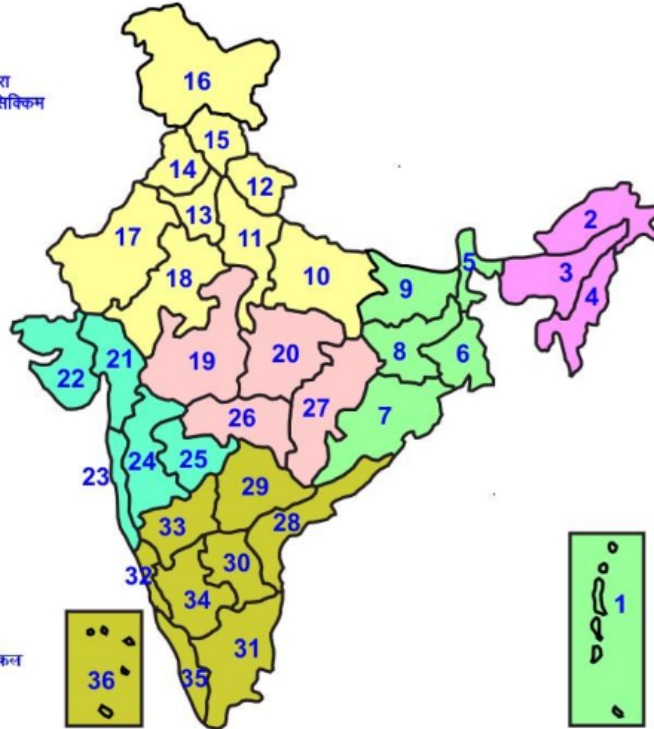
#### Legends & abbreviations:

#### Region wise classification of meteorological Sub-Divisions:

- **Northwest India:** Western Himalayan Region (Jammu-Kashmir-Ladakh-Gilgit-Baltistan-Muzaffarabad, Himachal Pradesh and Uttarakhand); Punjab, Haryana Chandigarh & Delhi; West Uttar Pradesh, East Uttar Pradesh, West Rajasthan and East Rajasthan.
- **Central India:** West Madhya Pradesh, East Madhya Pradesh, Vidarbha and Chhattisgarh.
- **East India:** Bihar, Jharkhand, Sub-Himalayan West Bengal & Sikkim; Gangetic West Bengal, Odisha and Andaman & Nicobar Islands.
- **Northeast India:** Arunachal Pradesh, Assam & Meghalaya and Nagaland, Manipur, Mizoram & Tripura.
- **West India:** Gujarat Region, Saurashtra & Kutch, Coastal Maharashtra (Konkan) & Goa, Madhya Maharashtra and Marathwada.
- **South India:** Coastal Andhra Pradesh & Yanam, Telangana, Rayalaseema, Coastal Karnataka, North Interior Karnataka, South Interior Karnataka, Kerala & Mahe, Tamil Nadu, Puducherry & Karaikal and Lakshadweep.

## LEGENDS

- 1 अंडमान और निकोबार द्वीप समुह
- 2 अरुणाचल प्रदेश
- 3 असम और मेघालय
- 4 नागालैंड मनीपुर मीजोरम और त्रिपुरा
- 5 उप हिमालय पश्चिम बंगाल एवं सिक्किम
- 6 पश्चिम बंगाल
- 7 ओडिसा
- 8 झारखंड
- 9 बिहार
- 10 पूर्वी उत्तर प्रदेश
- 11 पश्चिम उत्तर प्रदेश
- 12 उत्तराखंड
- 13 हरियाणा चंडिगढ़ एवं दिल्ली
- 14 पंजाब
- 15 हिमाचल प्रदेश
- 16 जम्मू एवं कश्मीर एवं लद्दाख
- 17 पश्चिम राजस्थान
- 18 पूर्वी राजस्थान
- 19 पश्चिम मध्य प्रदेश
- 20 पूर्वी मध्य प्रदेश
- 21 गुजरात क्षेत्र
- 22 सौराष्ट्र एवं कच्छ
- 23 कोंकण एवं गोवा
- 24 मध्य महाराष्ट्र
- 25 मराठावाडा
- 26 विदर्भ
- 27 छत्तीसगढ़
- 28 तटीय आंध्र प्रदेश एवं यनम
- 29 तेलंगाना
- 30 रायलसीमा
- 31 तमिलनाडु, पुदुचेरी एवं कराईकल
- 32 तटिय कर्नाटक
- 33 आंतरिक उत्तरी कर्नाटक
- 34 आंतरिक दक्षिणी कर्नाटक
- 35 केरल एवं माहे
- 36 लक्षद्वीप



1. Andaman & Nicobar Islands
2. Arunachal Pradesh
3. Assam & Meghalaya
4. Nagaland, Manipur, Mizoram & Tripura
5. Sub-Himalayan West Bengal & Sikkim
6. Gangetic West Bengal
7. Orissa
8. Jharkhand
9. Bihar
10. East Uttar Pradesh
11. West Uttar Pradesh
12. Uttarakhand
13. Haryana, Chd & Delhi
14. Punjab
15. Himachal Pradesh
16. Jammu & Kashmir and Ladakh
17. West Rajasthan
18. East Rajasthan
19. West Madhya Pradesh
20. East Madhya Pradesh
21. Gujarat
22. Saurashtra
23. Konkan & Goa
24. Madhya Maharashtra
25. Marathawada
26. Vidharbha
27. Chhattisgarh
28. Coastal Andhra Pradesh & Yanam
29. Telangana
30. Rayalaseema
31. Tamilnadu, Puducherry & Karaikal
32. Coastal Karnataka
33. North Interior Karnataka
34. South Interior Karnataka
35. Kerala & Mahe
36. Lakshadweep

## SPATIAL DISTRIBUTION (% of Stations reporting)

% Stations	Category	% Stations	Category
76-100	Widespread (WS/ Most Places)	26-50	Scattered (SCT/ A Few Places)
51-75	Fairly Widespread (FWS/ Many Places)	1-25	Isolated (ISOL)

### Subdivision Colour

- NO WARNING
- WATCH (BE UPDATED)
- ALERT (BE PREPARED TO TAKE ACTION)
- WARNING (TAKE ACTION)

### Probabilistic Forecast

Terms	Probability of Occurrence (%)
Unlikely	< 25
Likely	25 - 50
Very Likely	50 - 75
Most Likely	> 75

- |                          |                 |                      |                    |
|--------------------------|-----------------|----------------------|--------------------|
| Heavy Rain               | Very Heavy Rain | Extremely Heavy Rain | Heavy Snow         |
| Thunderstorm & Lightning | Hailstorm       | Dust Storm           | Dust Raising Winds |
| Strong surface winds     | Heat Wave       | Hot Day              | Warm Night         |
| Cold Wave                | Cold Day        | Ground Frost         | Fog                |
| Hot & Humid              |                 |                      |                    |

\*Red color warning does not mean "Red Alert" Red color warning means "Take Action"

Forecast and warning for any day is valid from 0830 hours IST of day till 0830 hours IST of next day

For more details kindly visit <https://mausam.imd.gov.in> or contact 011-2434-4599

(Service to the nation since 1875)

## LEGENDS

### WARNING

<b>WARNING (TAKE ACTION)</b>
<b>ALERT ( BE PREPARED)</b>
<b>WATCH (BE UPDATED)</b>
<b>NO WARNING ( NO ACTION)</b>

### Probabilistic Forecast

Terms	Probability of Occurrence (%)
Unlikely	< 25
Likely	25 - 50
Very Likely	50 - 75
Most Likely	> 75



**Heavy:** 64.5 to 115.5 mm/cm \*  
**Very Heavy:** 115.6 to 204.4 mm/cm\*  
**Extremely Heavy:** > 204.4 mm/cm \*



**When maximum temperature of a station reaches  $\geq 40^{\circ}\text{C}$  for plains and  $\geq 30^{\circ}\text{C}$  for hilly regions**  
**(a) Based on Departure from normal**

**Heat Wave:** Maximum Temperature Departure from normal  $4.5^{\circ}\text{C}$  to  $6.4^{\circ}\text{C}$ .  
**Severe Heat Wave:** Maximum Temperature Departure from normal  $\geq 6.5^{\circ}\text{C}$

**(b). Based on Actual maximum temperature**

**Heat Wave:** When actual maximum temperature  $\geq 45^{\circ}\text{C}$ .  
**Severe Heat Wave:** When actual maximum temperature  $\geq 47^{\circ}\text{C}$

**(c). Criteria for heat wave for coastal stations**

When maximum temperature departure is  $> 4.5^{\circ}\text{C}$  from normal. Heat Wave may be described provided maximum temperature  $\geq 37^{\circ}\text{C}$



**When maximum temperature remains  $40^{\circ}\text{C}$**

**Warm Night:** When minimum temperature departure  $4.5^{\circ}\text{C}$  to  $6.4^{\circ}\text{C}$ .  
**Severe Warm Night:** When minimum temperature departure  $> 6.4^{\circ}\text{C}$ .



**When minimum temperature of a station  $\leq 10^{\circ}\text{C}$  for plains and  $\leq 0^{\circ}\text{C}$  for hilly regions.**

**(a). Based on departure**

**Cold Wave:** Minimum Temperature Departure from normal  $-4.5^{\circ}\text{C}$  to  $-6.4^{\circ}\text{C}$ .  
**Severe Cold Wave:** Minimum Temperature Departure from normal  $\leq -6.5^{\circ}\text{C}$

**(b) Based on actual Minimum Temperature (for Plains only)**

**Cold Wave :** When Minimum Temperature is  $\leq 4.0^{\circ}\text{C}$   
**Severe Cold Wave:** When Minimum Temperature is  $\leq 2.0^{\circ}\text{C}$

**(c) For Coastal Stations**

When Minimum Temperature departure is  $\leq -4.5^{\circ}\text{C}$  & actual Minimum Temperature is  $\leq 15^{\circ}\text{C}$



**When minimum temperature of a station  $\leq 10^{\circ}\text{C}$  for plains and  $\leq 0^{\circ}\text{C}$  for hilly regions**  
**Based on departure**

**Cold Day:** Maximum Temperature Departure from normal  $-4.5^{\circ}\text{C}$  to  $-6.4^{\circ}\text{C}$ .  
**Severe Cold Day:** Maximum Temperature Departure from normal  $\leq -6.5^{\circ}\text{C}$



**Phenomenon of small droplets suspended in air and the horizontal visibility  $< 1\text{km}$**

**Moderate Fog:** When the visibility between 500-200 metres  
**Dense Fog:** when the visibility between 50- 200 metres  
**Very Dense Fog:** when the visibility  $< 50$  metres



**Sudden electrical discharges manifested by a flash of light (Lightning) and a sharp rumbling sound (thunder)**



**An ensemble of particles of dust or sand energetically lifted to great heights by a strong and turbulent wind.**



**Ice deposits on ground**

Air temperature  $\leq 4^{\circ}\text{C}$  ( over Plains)



**A strong wind that rises suddenly, lasts for atleast 1 minute.**

**Moderate:** Wind speed 52-61 kmph  
**Severe:** Wind speed 62-87 kmph  
**Very Severe:** Wind speed  $> 87$  kmph



**Effect of various waves in the sea over specific area**

**Rough to very rough:** Wind speed 41-62 kmph (22-33 knots) & Wave height 2.5-6 metre  
**High to very high:** Wind speed 63-117 kmph ( 34-63 knots) & Wave height 6-14 metre  
**Phenomenal:** Wind speed  $> 117$  kmph ( $> 63$  knots) & Wave height  $> 14$  metre



**Cyclonic Storm:** Wind speed 62-87 kmph (34-47 knots)  
**Severe Cyclonic Storm:** Wind speed 88-117 kmph (48-63 knots)  
**Very Severe Cyclonic Storm:** Wind speed 118-165 kmph (64 - 89 knots)  
**Extremely Severe Cyclonic Storm:** Wind speed 166-220 kmph (90 -119 knots)  
**Super Cyclone Storm:** Wind speed  $> 220$  kmph ( $> 119$  knots)

\*Red color warning does not mean "Red Alert" Red color warning means "Take Action"

Forecast and warning for any day is valid from 0830 hours IST of day till 0830 hours IST of next day

For more details kindly visit <https://mausam.imd.gov.in> or contact 011-2434-4599

(Service to the nation since 1875)