

2025-07-29

Time of Issue: 08:38:00 hours IST  
(Morning)

## ALL INDIA WEATHER SUMMARY AND FORECAST BULLETIN

### Significant Weather Features

#### Weather Forecast and Warnings

##### Northwest India:

- **Extremely heavy rainfall** very likely at isolated places over East Rajasthan on 29<sup>th</sup> July with **very heavy rainfall** on 30<sup>th</sup> & 31<sup>st</sup> July.
- **Isolated very heavy rainfall** over West Uttar Pradesh, Himachal Pradesh on 29<sup>th</sup> July.
- Isolated **heavy rainfall** likely over Uttarakhand during 29<sup>th</sup> July-04<sup>th</sup> August; Himachal Pradesh, Jammu and Kashmir, East Uttar Pradesh during 29<sup>th</sup>-30<sup>th</sup> July and 03<sup>rd</sup> & 04<sup>th</sup> August; Punjab, Haryana & Chandigarh on 29<sup>th</sup> July, 03<sup>rd</sup> & 04<sup>th</sup> August; East Rajasthan on 01<sup>st</sup> August and West Rajasthan during 29<sup>th</sup> July-01<sup>st</sup> August.
- Light/moderate rainfall at many places accompanied with thunderstorm, lightning likely over Western Himalayan region and some places over the plains during next 7 days.

##### West India:

- Isolated **heavy rainfall** likely over Konkan, Gujarat region, Ghat areas of Madhya Maharashtra on 29<sup>th</sup> July.
- Light to moderate rainfall at many places very likely over the region during next 6-7 days.

##### Northeast India:

- Light/moderate rainfall at many places accompanied with **thunderstorm, lightning and isolated heavy to very heavy rainfall** likely to continue over Arunachal Pradesh, Assam & Meghalaya during 29<sup>th</sup> July-04<sup>th</sup> August.

##### East & Central India:

- Isolated **heavy rainfall** likely over Madhya Pradesh, Chhattisgarh during 29<sup>th</sup>-31<sup>st</sup>; Sub-Himalayan West Bengal & Sikkim during 29<sup>th</sup> July-04<sup>th</sup> August; Bihar during 29<sup>th</sup> July-02<sup>nd</sup> August; Jharkhand, Gangetic West Bengal during 29<sup>th</sup>-30<sup>th</sup>; Odisha on 29<sup>th</sup> July with isolated **very heavy rainfall** over Bihar, Madhya Pradesh on 29<sup>th</sup>; Sub-Himalayan West Bengal & Sikkim during 02<sup>nd</sup> - 04<sup>th</sup> August.
- Light to moderate rainfall at most/many places accompanied with thunderstorm, lightning & gusty winds (speed reaching 30-40 Kmph) likely over the region during next 5 days.

##### South Peninsular India:

- Isolated **heavy rainfall** likely over Kerala & Mahe during 29<sup>th</sup>-30<sup>th</sup>; Coastal Karnataka on 29<sup>th</sup> July.
- **Strong surface winds** (speed reaching 40-50 kmph) very likely over South Peninsular India during next 5 days.
- Light to moderate rainfall at most/many places over Kerala & Mahe, Lakshadweep, Karnataka, Rayalaseema, Coastal Andhra Pradesh & Yanam and Telanganaduring next 7 days.

\*Red color warning does not mean "Red Alert" Red color warning means "Take Action"

Forecast and warning for any day is valid from 0830 hours IST of day till 0830 hours IST of next day

For more details kindly visit <https://mausam.imd.gov.in> or contact 011-2434-4599

(Service to the nation since 1875)

**Main Weather Observations:**

❖ **Significant rainfall recorded(in cm)** (from 0830 hours IST of yesterday to 0530 hours IST of today): **Bihar:** Patna-airport (dist Patna) 15, Bhagalpur (dist Bhagalpur) 5; **Gangetic West Bengal:** Kolkata-alipur (dist Kolkata) 7, Kolkata (dum Dum) AP (dist North 24 Parganas) 5, Diamond Harbour (dist South 24 Parganas) 2; **East Uttar Pradesh:** Gorakhpur (dist Gorakhpur) 7, Sultanpur-obs2 (dist Sultanpur) 5; **East Rajasthan:** Jaipur (dist Jaipur) 7; **Jharkhand:** Jamshedpur AP (dist East Singhbhum) 5, Ranchi AP (dist Ranchi) 2; **Gujarat Region:** Ahmedabad (dist Ahmedabad) 4, Baroda AP (dist Vadodara) 2; **Himachal Pradesh:** Sundernagar (dist Mandi) 3; **Chhattisgarh:** Jagdalpur (dist Bastar) 3; **Jammu & Kashmir and Ladakh:** Jammu (dist Jammu), Katra (dist Reasi) 3 Each; **Uttarakhand:** Dehra Dun-mokampur (dist Dehradun) 2; **Sub-Himalayan West Bengal & Sikkim:** Malda (dist Malda) 2.

❖ **Heavy Rainfall observed** (from 0830 hours IST of yesterday to 0530 hours IST of today): **Heavy to very heavy rain** at isolated places over Bihar **Heavy rain** at isolated places over Gangetic West Bengal, East Uttar Pradesh and East Rajasthan.

❖ **Minimum Temperature Departures (as on 28-07-2025): markedly above normal(> 5.1°C)** at many places over Jammu-KashmirLadakh-Gilgit-Baltistan-Muzaffarabad; at few places over Assam & Meghalaya; at isolated places over West Uttar Pradesh, Himachal Pradesh, East Rajasthan and West Madhya Pradesh. **appreciably above normal(3.1°C to 5.0°C)** at few places over Sub Himalayan West Bengal & Sikkim and East Madhya Pradesh; at isolated places over Andaman & Nicobar Islands, Gangetic West Bengal, Odisha, West Rajasthan, Saurashtra & Kutch and Tamil Nadu, Puducherry & Karaikal. **above normal(1.6°C to 3.0°C)** at many places over Haryana-Chandigarh-Delhi; at few places over Punjab, Gujarat Region, Coastal Andhra Pradesh & Yanam and Lakshadweep; at isolated places over Bihar, East Uttar Pradesh and Uttarakhand. **near normal(-1.5°C to 1.5°C)** at many places over Chhattisgarh and Kerala & Mahe; at most places over Arunachal Pradesh, Nagaland, Manipur, Mizoram & Tripura, Jharkhand, Konkan & Goa, Madhya Maharashtra, Marathwada, Vidarbha, Telangana, Rayalaseema, Coastal Karnataka, North Interior Karnataka and South Interior Karnataka. **The lowest minimum temperature** of 18.2°C is reported at DURG (CHHATTISGARH) over the Plains of India.

❖ **Maximum Temperature Departures (as on 28-07-2025): markedly above normal(> 5.1°C)** at many places over Jammu-KashmirLadakh-Gilgit-Baltistan-Muzaffarabad. **appreciably above normal(3.1°C to 5.0°C)** at few places over Arunachal Pradesh; at isolated places over Assam & Meghalaya, Odisha, Saurashtra & Kutch, Coastal Andhra Pradesh & Yanam and Tamil Nadu, Puducherry & Karaikal. **above normal(1.6°C to 3.0°C)** at few places over Himachal Pradesh and Kerala & Mahe; at isolated places over Nagaland, Manipur, Mizoram & Tripura, Gangetic West Bengal, West Uttar Pradesh, West Rajasthan and Telangana. **near normal(-1.5°C to 1.5°C)** at many places over Andaman & Nicobar Islands, Sub Himalayan West Bengal & Sikkim, Uttarakhand, East Rajasthan, Konkan & Goa, Madhya Maharashtra, Vidarbha, Chhattisgarh and Rayalaseema; at most places over Haryana-Chandigarh-Delhi, Punjab, Marathwada, Coastal Karnataka, North Interior Karnataka, South Interior Karnataka and Lakshadweep; at few places over Bihar and East Uttar Pradesh; at isolated places over West Madhya Pradesh and East Madhya Pradesh. **The highest maximum temperature** of 40.9°C is reported at MADURAI (A) (TAMIL NADU).

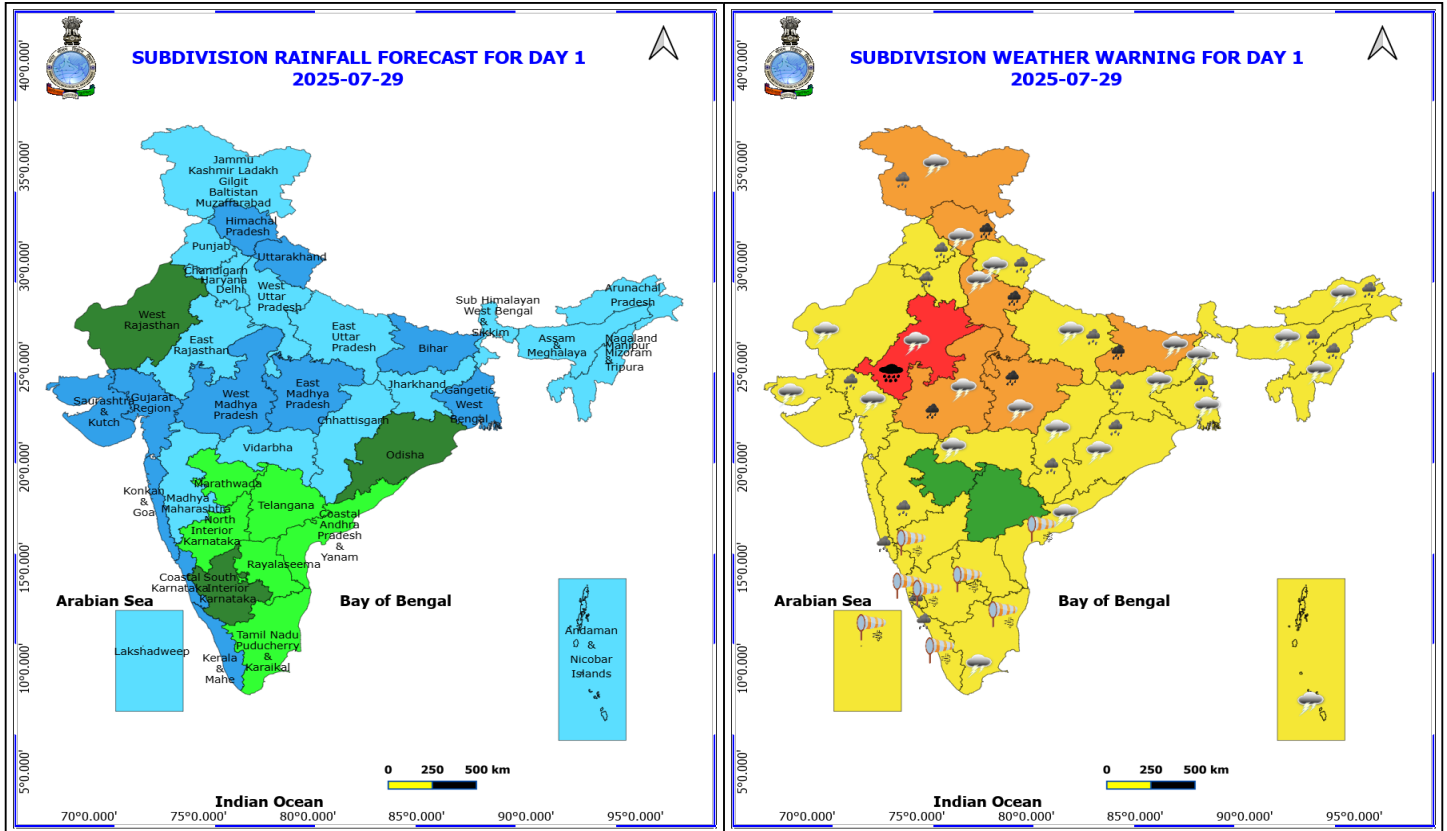


### Meteorological Analysis (Based on 0530 hours IST)

- The **low-Pressure area** over northwest Madhya Pradesh & adjoining east Rajasthan lay over northwest Madhya Pradesh at 0530 hrs IST of today, the 29<sup>th</sup> July, 2025. The associated cyclonic circulation extended upto 5.8 km above mean sea level tilting southwestwards with height.
- The **trough** now runs from the northeast Arabian Sea to southeast Uttar Pradesh across Gujarat, cyclonic circulation associated with the low pressure area over northwest Madhya Pradesh at 3.1 km above mean sea level.
- The **monsoon trough** at mean sea level passes through Firozpur, Alwar, center of **low-pressure area** over northwest Madhya Pradesh, Daltonganj, Jamshedpur, Digha and thence east-southeastwards to the northeast Bay of Bengal.
- The **upper air cyclonic circulation** over south Punjab & neighbourhood at 0.9 km above mean sea level persisted.
- The **Western Disturbance** as a trough in middle tropospheric level with its axis at 5.8 km above mean sea level roughly along Long. 68°E to the north of Lat. 31°N persists.
- The **upper air cyclonic circulation** over south Bangladesh & neighbourhood extended upto 5.8 km above mean sea level tilting southwestwards with height persisted.
- The **trough** from north Bihar to Manipur across north Bangladesh and south Assam between 0.9 & 3.1 km above mean sea level tilting southwestwards with height persisted.

### Weather Outlook for subsequent 3 days

- Fairly widespread to widespread rainfall likely over northwest, northeast, eastern India.
- Scattered to fairly widespread rainfall likely over central and peninsular India.



**29 July (Day 1)**

- ❖ **Heavy to Very Heavy Rainfall with isolated Extremely Heavy Rainfall** very likely at isolated places over East Rajasthan.
- ❖ **Heavy to Very Heavy Rainfall** very likely at isolated places over Bihar, Himachal Pradesh, Madhya Pradesh and West Uttar Pradesh.
- ❖ **Heavy Rainfall** very likely at isolated places over Arunachal Pradesh, Assam & Meghalaya, Chhattisgarh, Coastal Karnataka, East Uttar Pradesh, Gangetic West Bengal, Gujarat Region, Haryana, Chandigarh & Delhi, Jammu-Kashmir-Ladakh-Gilgit-Baltistan-Muzaffarabad, Jharkhand, Kerala & Mahe, Konkan & Goa, Madhya Maharashtra, Nagaland, Manipur, Mizoram and Tripura, Odisha, Punjab and Uttarakhand.
- ❖ **Thunderstorm accompanied with lightning & gusty winds(30-40kmph)** very likely at isolated places over Andaman & Nicobar Islands, Bihar, Jammu-Kashmir-Ladakh-Gilgit-Baltistan-Muzaffarabad, Jharkhand, Odisha and West Bengal & Sikkim.
- ❖ **Thunderstorm accompanied with Lightning** very likely at isolated places over Arunachal Pradesh, Assam & Meghalaya, Chhattisgarh, Coastal Andhra Pradesh, Gujarat State, Himachal Pradesh, Madhya Pradesh, Nagaland, Manipur, Mizoram and Tripura, Rajasthan, Tamil Nadu Puducherry & Karaikal, Uttar Pradesh, Uttarakhand and Vidarbha.
- ❖ **Strong Surface Winds** very likely at isolated places over Andhra Pradesh, Karnataka, Kerala & Mahe, Lakshadweep and Tamil Nadu Puducherry & Karaikal.

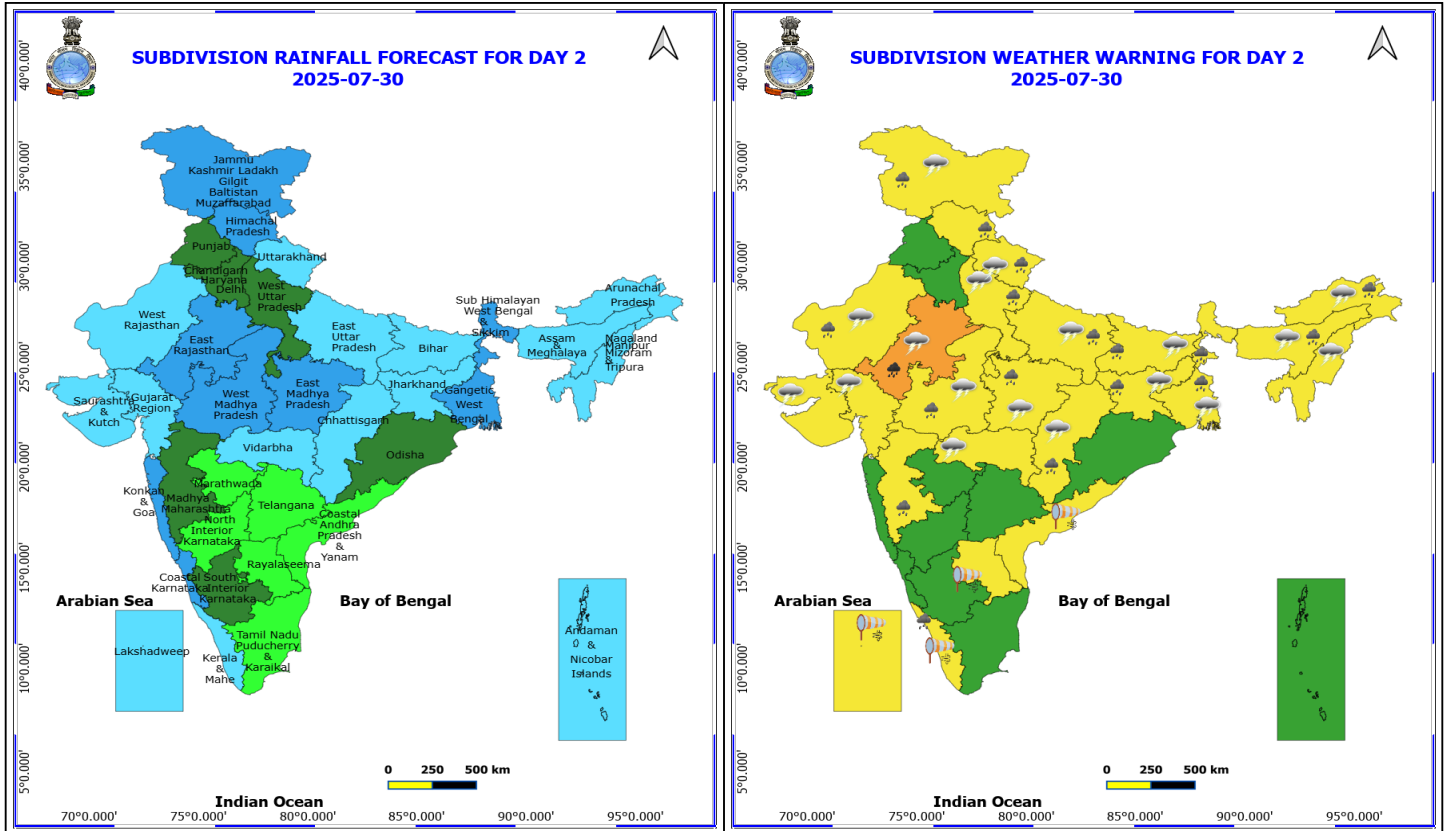
Squally wind with speed reaching 45 kmph to 55 kmph gusting to 65 kmph is likely to prevail along and off Somalia, Yemen & south Oman coasts, most parts of westcentral Arabian Sea & eastcentral Arabian Sea, many parts of southwest Arabian Sea, southern parts of north Arabian Sea.

**\*Red color warning does not mean "Red Alert" Red color warning means "Take Action"**  
 Forecast and warning for any day is valid from 0830 hours IST of day till 0830 hours IST of next day  
 For more details kindly visit <https://mausam.imd.gov.in> or contact 011-2434-4599  
 (Service to the nation since 1875)



Squally weather with wind speed reaching 40 - 50 kmph gusting to 60 kmph likely to prevail over, many parts of southeast Arabian Sea, few parts of southwest Arabian Sea, along and off Kerala, Karnataka, over Lakshadweep, Maldives, Comorin areas, over few parts of southwest Bay of Bengal, over Gulf of Mannar, along and off Sri Lanka coast.

Squally weather with wind speed 45 - 55 kmph gusting to 65 kmph likely to prevail along and off Gujarat, Konkan, Goa coasts and adjoining sea areas.



### 30 July (Day 2)

- ❖ **Heavy to Very Heavy Rainfall** very likely at isolated places over East Rajasthan.
- ❖ **Heavy Rainfall** very likely at isolated places over Arunachal Pradesh, Assam & Meghalaya, Bihar, Chhattisgarh, Himachal Pradesh, Jammu-Kashmir-Ladakh-Gilgit-Baltistan-Muzaffarabad, Jharkhand, Kerala & Mahe, Madhya Maharashtra, Madhya Pradesh, Uttar Pradesh, Uttarakhand, West Bengal & Sikkim and West Rajasthan.
- ❖ **Thunderstorm accompanied with lightning & gusty winds(30-40kmph)** very likely at isolated places over Bihar, Gangetic West Bengal, Jammu-Kashmir-Ladakh-Gilgit-Baltistan-Muzaffarabad and Jharkhand.
- ❖ **Thunderstorm accompanied with Lightning** very likely at isolated places over Arunachal Pradesh, Assam & Meghalaya, Chhattisgarh, Gujarat State, Madhya Pradesh, Nagaland, Manipur, Mizoram and Tripura, Rajasthan, Uttar Pradesh, Uttarakhand and Vidarbha.
- ❖ **Strong Surface Winds** very likely at isolated places over Andhra Pradesh, Kerala & Mahe and Lakshadweep.

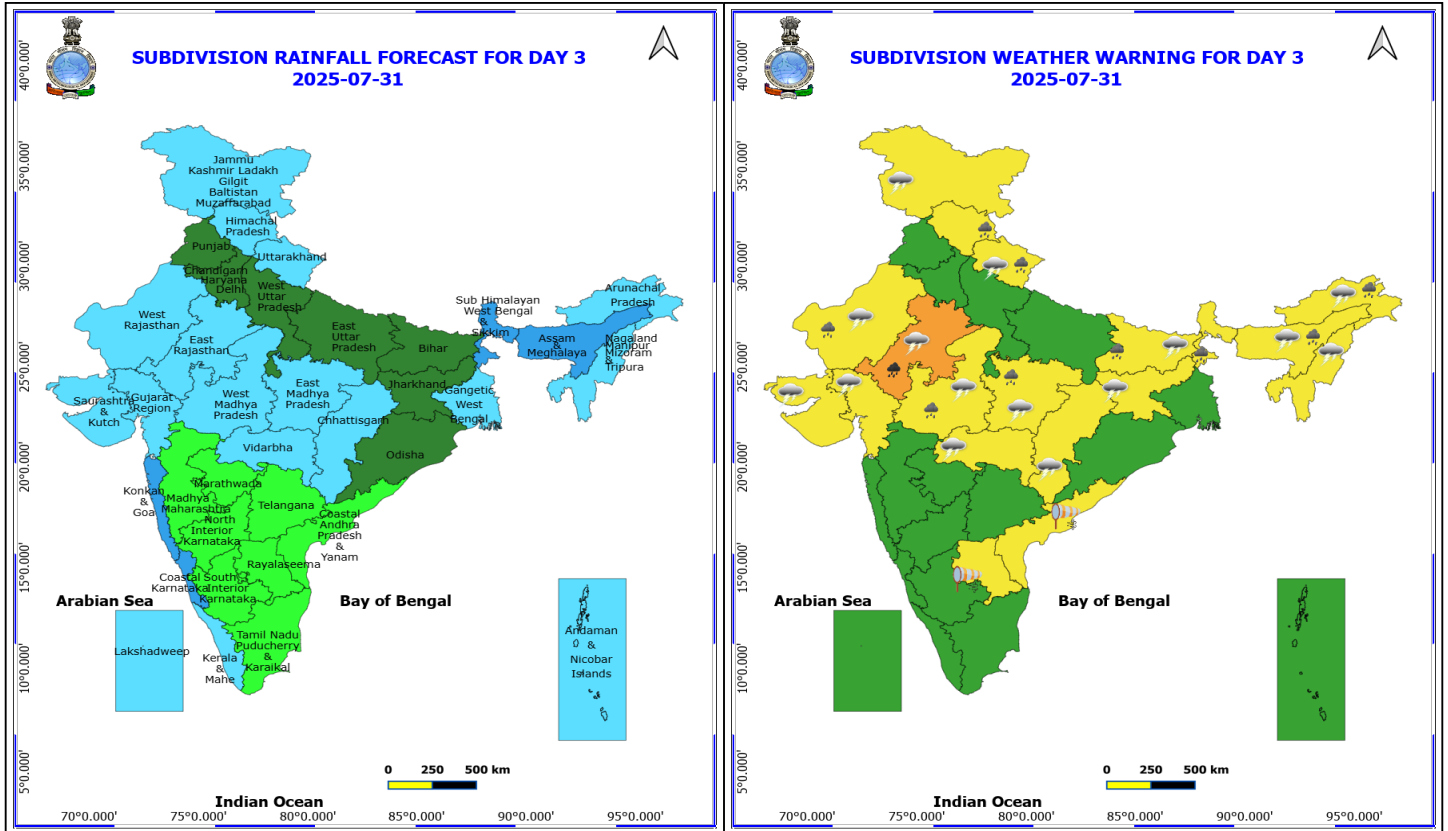
Squally wind with speed reaching 45 kmph to 55 kmph gusting to 65 kmph is likely to prevail along and off Somalia, Yemen & south Oman coasts, most parts of westcentral Arabian Sea & eastcentral Arabian Sea, many parts of southwest Arabian Sea, southern parts of north Arabian Sea.

Squally weather with wind speed reaching 40 - 50 kmph gusting to 60 kmph likely to prevail over many parts of eastcentral Arabian Sea, along and off Konkan & Goa, Karnataka coasts.

Squally weather with wind speed 45 - 55 kmph gusting to 65 kmph likely to prevail along and off Gujarat and adjoining most parts of northeast Arabian Sea

**\*Red color warning does not mean "Red Alert" Red color warning means "Take Action"**  
Forecast and warning for any day is valid from 0830 hours IST of day till 0830 hours IST of next day  
For more details kindly visit <https://mausam.imd.gov.in> or contact 011-2434-4599

(Service to the nation since 1875)

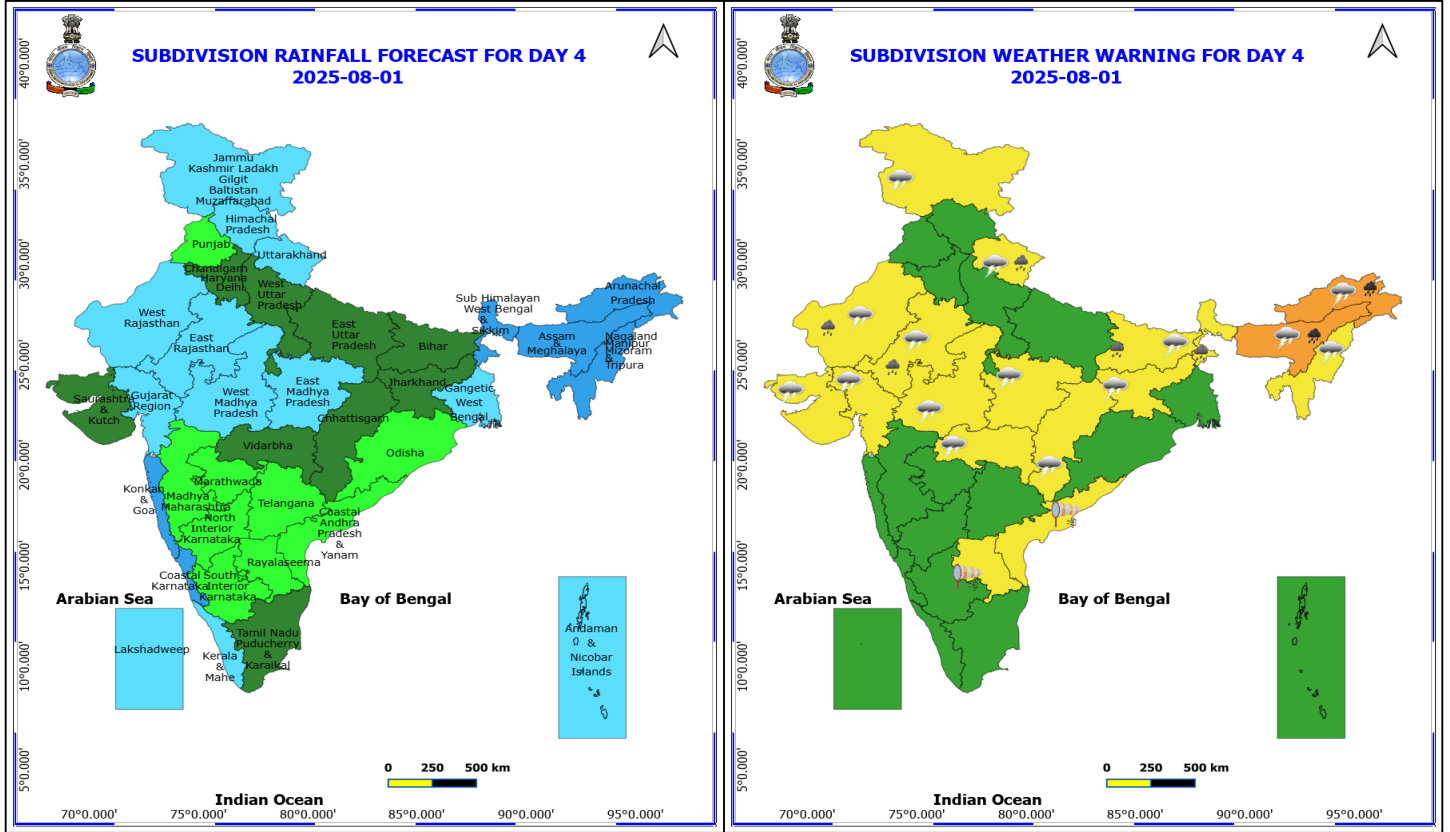


### 31 July (Day 3)

- ❖ **Heavy to Very Heavy Rainfall** very likely at isolated places over East Rajasthan.
- ❖ **Heavy Rainfall** very likely at isolated places over Arunachal Pradesh, Assam & Meghalaya, Bihar, Himachal Pradesh, Madhya Pradesh, Sub Himalayan West Bengal & Sikkim, Uttarakhand and West Rajasthan.
- ❖ **Thunderstorm accompanied with lightning & gusty winds(30-40kmph)** very likely at isolated places over Bihar and Jharkhand.
- ❖ **Thunderstorm accompanied with Lightning** very likely at isolated places over Arunachal Pradesh, Assam & Meghalaya, Chhattisgarh, Gujarat State, Jammu-Kashmir-Ladakh-Gilgit-Baltistan-Muzaffarabad, Madhya Pradesh, Nagaland, Manipur, Mizoram and Tripura, Rajasthan, Uttarakhand and Vidarbha.
- ❖ **Strong Surface Winds** very likely at isolated places over Andhra Pradesh.

Squally wind with speed reaching 45 kmph to 55 kmph gusting to 65 kmph is likely to prevail along and off Somalia, Yemen & south Oman coasts, most parts of westcentral Arabian Sea & eastcentral Arabian Sea, many parts of southwest Arabian Sea, southern parts of north Arabian Sea.

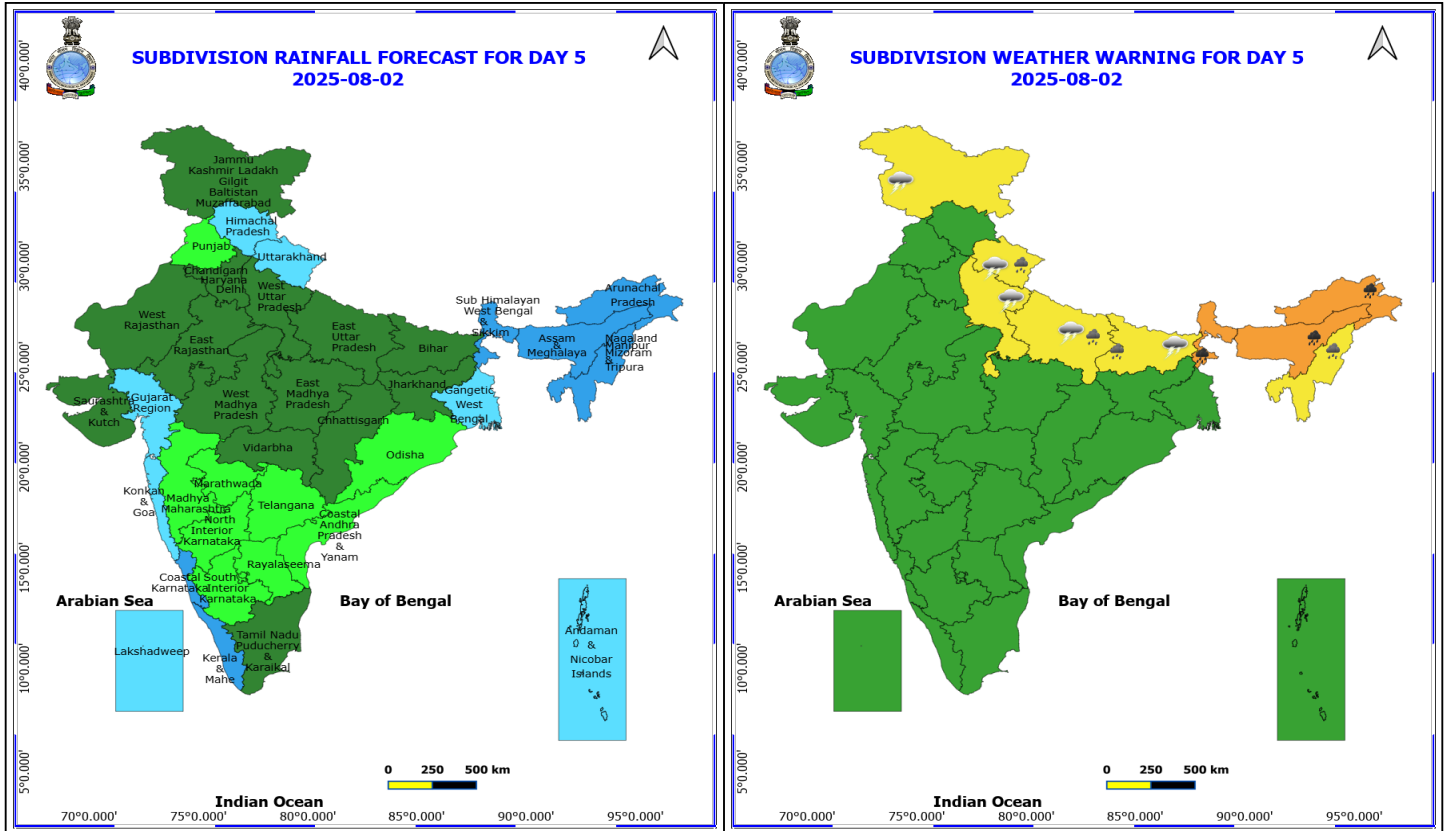
Squally weather with wind speed reaching 40 - 50 kmph gusting to 60 kmph likely to prevail over many parts of eastcentral Arabian Sea & adjoining, most parts of northeast Arabian Sea along and off Gujarat, Konkon coasts.



**1 August (Day 4)**

- ❖ **Heavy to Very Heavy Rainfall** likely at isolated places over Arunachal Pradesh and Assam & Meghalaya.
- ❖ **Heavy Rainfall** likely at isolated places over Bihar, Rajasthan, Sub Himalayan West Bengal & Sikkim and Uttarakhand.
- ❖ **Thunderstorm accompanied with lightning & gusty winds(30-40kmph)** likely at isolated places over Bihar and Jharkhand.
- ❖ **Thunderstorm accompanied with Lightning** likely at isolated places over Arunachal Pradesh, Assam & Meghalaya, Chhattisgarh, Gujarat State, Jammu-Kashmir-Ladakh-Gilgit-Baltistan-Muzaffarabad, Madhya Pradesh, Nagaland, Manipur, Mizoram and Tripura, Rajasthan, Uttarakhand and Vidarbha.
- ❖ **Strong Surface Winds** likely at isolated places over Andhra Pradesh.

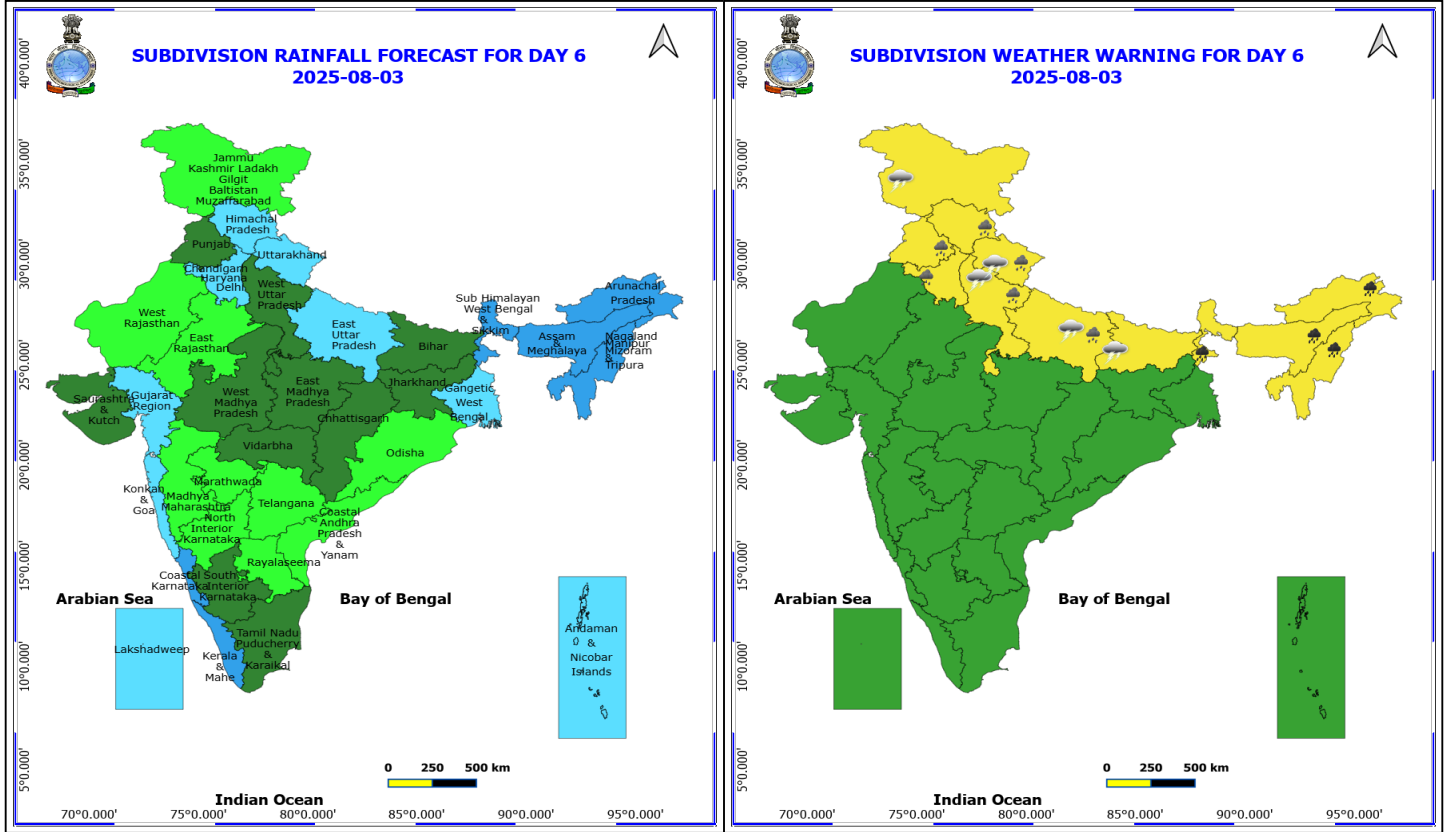
Squally wind with speed reaching 45 kmph to 55 kmph gusting to 65 kmph is likely to prevail along and off Somalia, Yemen & south Oman coasts, most parts of westcentral Arabian Sea & eastcentral Arabian Sea, many parts of southwest Arabian Sea, southern parts of north Arabian Sea.



## 2 August (Day 5)

- ❖ **Heavy to Very Heavy Rainfall** likely at isolated places over Arunachal Pradesh, Assam & Meghalaya and Sub Himalayan West Bengal & Sikkim.
- ❖ **Heavy Rainfall** likely at isolated places over Bihar, East Uttar Pradesh, Nagaland, Manipur, Mizoram and Tripura and Uttarakhand.
- ❖ **Thunderstorm accompanied with lightning & gusty winds(30-40kmph)** likely at isolated places over Bihar.
- ❖ **Thunderstorm accompanied with Lightning** likely at isolated places over Jammu-Kashmir-Ladakh-Gilgit-Baltistan-Muzaffarabad, Uttar Pradesh and Uttarakhand.

Squally wind with speed reaching 45 kmph to 55 kmph gusting to 65 kmph is likely to prevail along and off Somalia, Yemen & south Oman coasts, most parts of westcentral Arabian Sea & eastcentral Arabian Sea, many parts of southwest Arabian Sea, southern parts of north Arabian Sea.



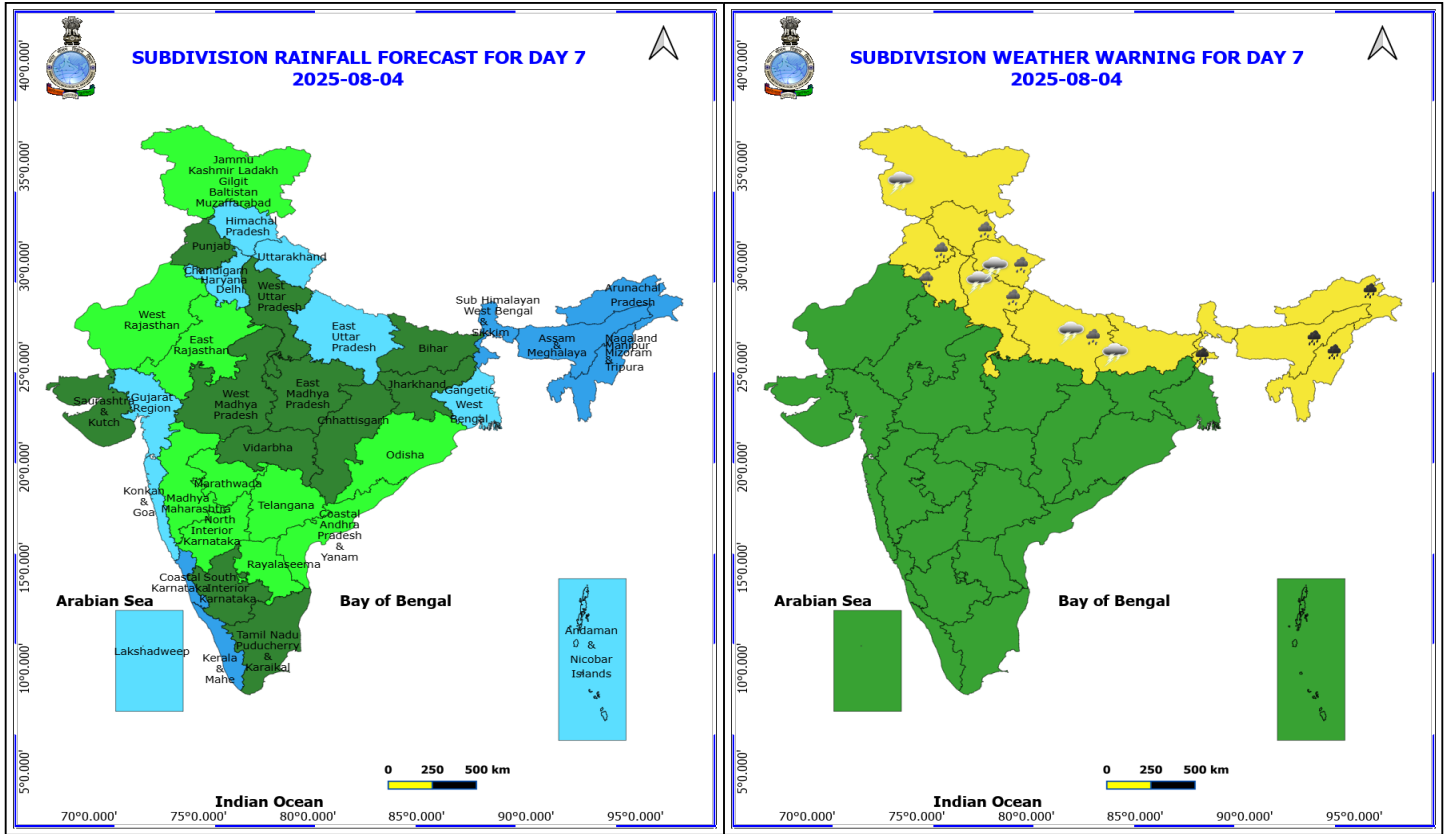
### 3 August (Day 6)

- ❖ **Heavy to Very Heavy Rainfall** likely at isolated places over Arunachal Pradesh, Assam & Meghalaya, Nagaland, Manipur, Mizoram and Tripura and Sub Himalayan West Bengal & Sikkim.
- ❖ **Heavy Rainfall** likely at isolated places over Haryana, Chandigarh & Delhi, Himachal Pradesh, Punjab, Uttar Pradesh and Uttarakhand.
- ❖ **Thunderstorm accompanied with lightning & gusty winds(30-40kmph)** likely at isolated places over Bihar.
- ❖ **Thunderstorm accompanied with Lightning** likely at isolated places over Jammu-Kashmir-Ladakh-Gilgit-Baltistan-Muzaffarabad, Uttar Pradesh and Uttarakhand.

**No Fishermen Warning**

**\*Red color warning does not mean "Red Alert" Red color warning means "Take Action"**  
Forecast and warning for any day is valid from 0830 hours IST of day till 0830 hours IST of next day  
For more details kindly visit <https://mausam.imd.gov.in> or contact 011-2434-4599

(Service to the nation since 1875)



**4 August (Day 7)**

- ❖ **Heavy to Very Heavy Rainfall** likely at isolated places over Arunachal Pradesh, Assam & Meghalaya, Nagaland, Manipur, Mizoram and Tripura and Sub Himalayan West Bengal & Sikkim.
- ❖ **Heavy Rainfall** likely at isolated places over Haryana, Chandigarh & Delhi, Himachal Pradesh, Punjab, Uttar Pradesh and Uttarakhand.
- ❖ **Thunderstorm accompanied with lightning & gusty winds(30-40kmph)** likely at isolated places over Bihar.
- ❖ **Thunderstorm accompanied with Lightning** likely at isolated places over Jammu-Kashmir-Ladakh-Gilgit-Baltistan-Muzaffarabad, Uttar Pradesh and Uttarakhand.

**No Fishermen Warning**

**\*Red color warning does not mean "Red Alert" Red color warning means "Take Action"**  
Forecast and warning for any day is valid from 0830 hours IST of day till 0830 hours IST of next day  
For more details kindly visit <https://mausam.imd.gov.in> or contact 011-2434-4599

(Service to the nation since 1875)

## Flash Flood Warnings

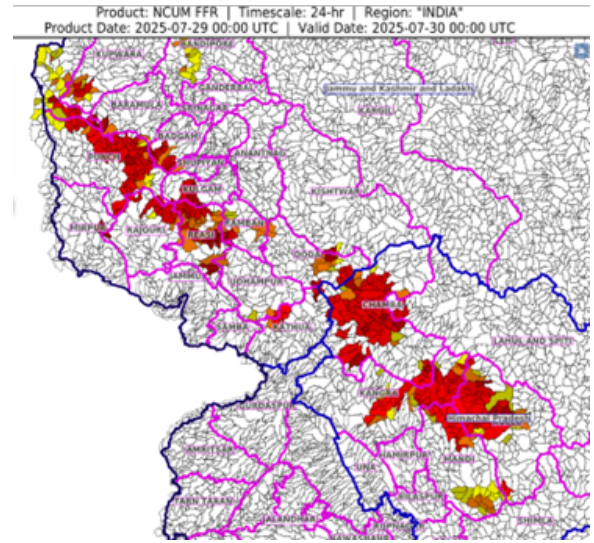
### 24 hours Outlook for the Flash Flood Risk (FFR) till 0530 IST of 30-07-2025 :

Low to Moderate flash flood risk likely over few watersheds & neighbourhoods of following Met Sub-divisions during next 24 hours.

**Jammu & Kashmir & Ladakh** – Reasi, Udhampur, Doda, Kishtwar, Ramban, Rajouri, Kulgam, Shupiyan, Mirpur, Punch, Badgam, Baramula, Kupwara, Bandipore, Muzaffarabad and Kathua districts.

**Himachal Pradesh** – Chamba, Kangra, Mandi, Lahual & Spiti and Kullu districts.

Surface runoff/ Inundation may occur at some fully saturated soils & low-lying areas over Area of Concern (AoC) as shown in map due to expected rainfall occurrence in next 24 hours.





## Table-1

### 7 Days Rainfall Forecast

| S.No. | Subdivision                  | 29- Jul | 30- Jul | 31- Jul | 1- Aug | 2- Aug | 3- Aug | 4- Aug |
|-------|------------------------------|---------|---------|---------|--------|--------|--------|--------|
|       |                              | Day 1   | Day 2   | Day 3   | Day 4  | Day 5  | Day 6  | Day 7  |
| 1     | ANDAMAN & NICOBAR ISLANDS    | FWS     | FWS     | FWS     | FWS    | FWS    | FWS    | FWS    |
| 2     | ARUNACHAL PRADESH            | FWS     | FWS     | FWS     | WS     | WS     | WS     | WS     |
| 3     | ASSAM & MEHGHALAYA           | FWS     | FWS     | WS      | WS     | WS     | WS     | WS     |
| 4     | N. M. M. & T.                | FWS     | FWS     | FWS     | WS     | WS     | WS     | WS     |
| 5     | S.H. WEST BENGAL & SIKKIM    | FWS     | WS      | WS      | WS     | WS     | WS     | WS     |
| 6     | GANGETIC WEST BENGAL         | WS      | WS      | FWS     | FWS    | FWS    | FWS    | FWS    |
| 7     | ODISHA                       | SCT     | SCT     | SCT     | ISOL   | ISOL   | ISOL   | ISOL   |
| 8     | JHARKHAND                    | FWS     | FWS     | SCT     | SCT    | SCT    | SCT    | SCT    |
| 9     | BIHAR                        | WS      | FWS     | SCT     | SCT    | SCT    | SCT    | SCT    |
| 10    | EAST UTTAR PRADESH           | FWS     | FWS     | SCT     | SCT    | SCT    | FWS    | FWS    |
| 11    | WEST UTTAR PRADESH           | FWS     | SCT     | SCT     | SCT    | SCT    | SCT    | SCT    |
| 12    | UTTARAKHAND                  | WS      | FWS     | FWS     | FWS    | FWS    | FWS    | FWS    |
| 13    | HARYANA, CHD & DELHI         | FWS     | SCT     | SCT     | SCT    | SCT    | FWS    | FWS    |
| 14    | PUNJAB                       | FWS     | SCT     | SCT     | ISOL   | ISOL   | SCT    | SCT    |
| 15    | HIMACHAL PRADESH             | WS      | WS      | FWS     | FWS    | FWS    | FWS    | FWS    |
| 16    | JAMMU AND KASHMIR AND LADAKH | FWS     | WS      | FWS     | FWS    | SCT    | ISOL   | ISOL   |
| 17    | WEST RAJASTHAN               | SCT     | FWS     | FWS     | FWS    | SCT    | ISOL   | ISOL   |
| 18    | EAST RAJASTHAN               | FWS     | WS      | FWS     | FWS    | SCT    | ISOL   | ISOL   |
| 19    | WEST MADHYA PRADESH          | WS      | WS      | FWS     | FWS    | SCT    | SCT    | SCT    |
| 20    | EAST MADHYA PRADESH          | WS      | WS      | FWS     | FWS    | SCT    | SCT    | SCT    |
| 21    | GUJRAT REGION                | WS      | FWS     | FWS     | FWS    | FWS    | FWS    | FWS    |
| 22    | SAURASHTRA & KUTCH           | WS      | FWS     | FWS     | SCT    | SCT    | SCT    | SCT    |
| 23    | KONKAN & GOA                 | WS      | WS      | WS      | WS     | FWS    | FWS    | FWS    |
| 24    | MADHYA MAHARASHTRA           | FWS     | SCT     | ISOL    | ISOL   | ISOL   | ISOL   | ISOL   |
| 25    | MARATHWADA                   | ISOL    | ISOL    | ISOL    | ISOL   | ISOL   | ISOL   | ISOL   |
| 26    | VIDARBHA                     | FWS     | FWS     | FWS     | SCT    | SCT    | SCT    | SCT    |
| 27    | CHATTISGARH                  | FWS     | FWS     | FWS     | SCT    | SCT    | SCT    | SCT    |
| 28    | COASTAL ANDHRA PRADESH       | ISOL    | ISOL    | ISOL    | ISOL   | ISOL   | ISOL   | ISOL   |
| 29    | TELANGANA                    | ISOL    | ISOL    | ISOL    | ISOL   | ISOL   | ISOL   | ISOL   |
| 30    | RAYALASEEMA                  | ISOL    | ISOL    | ISOL    | ISOL   | ISOL   | ISOL   | ISOL   |
| 31    | TAMILNADU & PUDUCHERRY       | ISOL    | ISOL    | ISOL    | SCT    | SCT    | SCT    | SCT    |
| 32    | COSTAL KARNATAKA             | WS      | WS      | WS      | WS     | WS     | WS     | WS     |
| 33    | NORTH INTERIOR KARNATAKA     | ISOL    | ISOL    | ISOL    | ISOL   | ISOL   | ISOL   | ISOL   |
| 34    | SOUTH INTERIOR KARNATAKA     | SCT     | SCT     | ISOL    | ISOL   | ISOL   | SCT    | SCT    |
| 35    | KERALA                       | WS      | FWS     | FWS     | FWS    | WS     | WS     | WS     |
| 36    | LAKSHDWEEP                   | FWS     | FWS     | FWS     | FWS    | FWS    | FWS    | FWS    |

| Legend | Category                      | %Stations |
|--------|-------------------------------|-----------|
| WS     | Widespread/Most Places        | 76-100    |
| FWS    | Fairly Widespread/Many Places | 51-75     |
| SCT    | Scattered/ A Few Places       | 26-50     |
| ISOL   | Isolated Places               | 1-25      |
| DRY    | No Rain                       | 0         |

\*Red color warning does not mean "Red Alert" Red color warning means "Take Action"  
Forecast and warning for any day is valid from 0830 hours IST of day till 0830 hours IST of next day  
For more details kindly visit <https://mausam.imd.gov.in> or contact 011-2434-4599

(Service to the nation since 1875)

Fig. 1: Maximum Temperatures Dated 2025-07-29

Fig. 2: Departure of Maximum Temp. Dated 2025-07-29

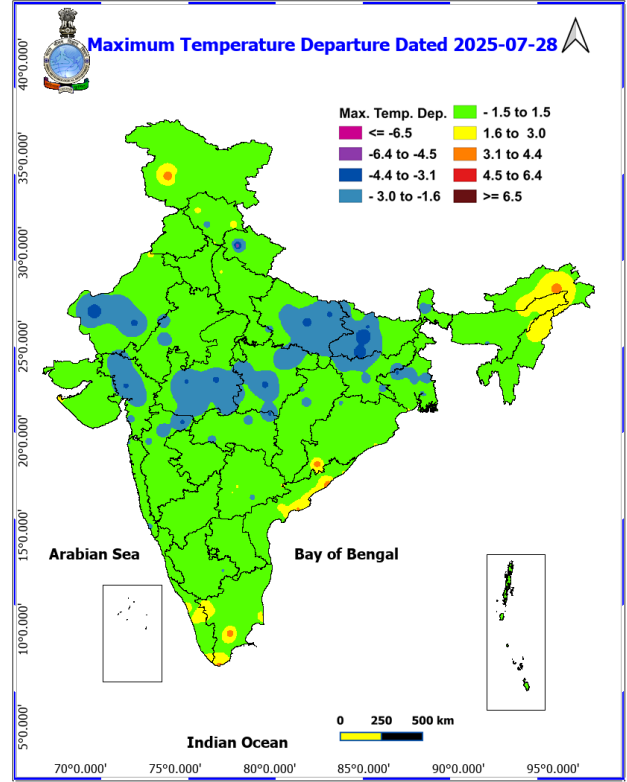
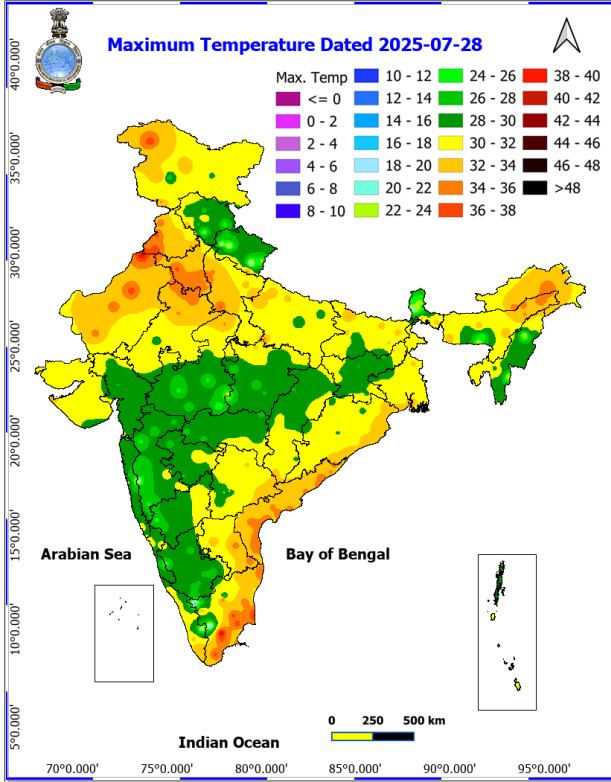
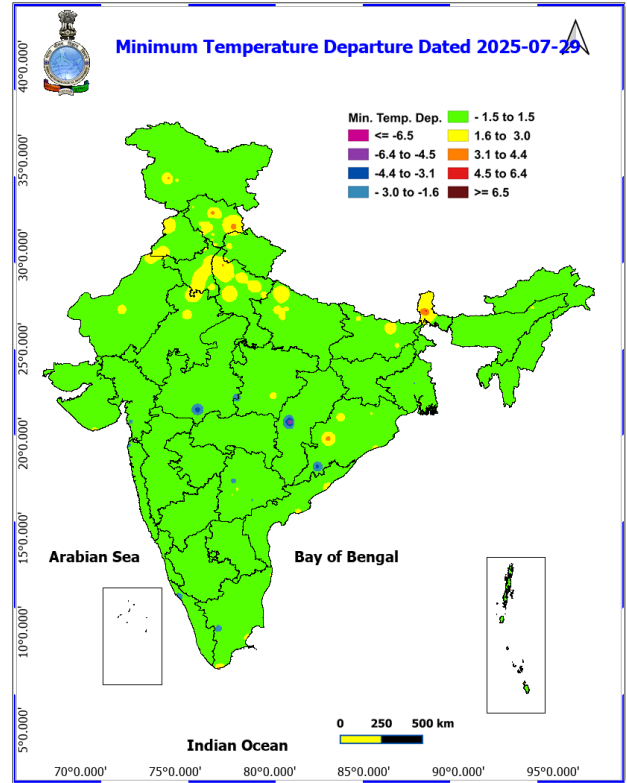
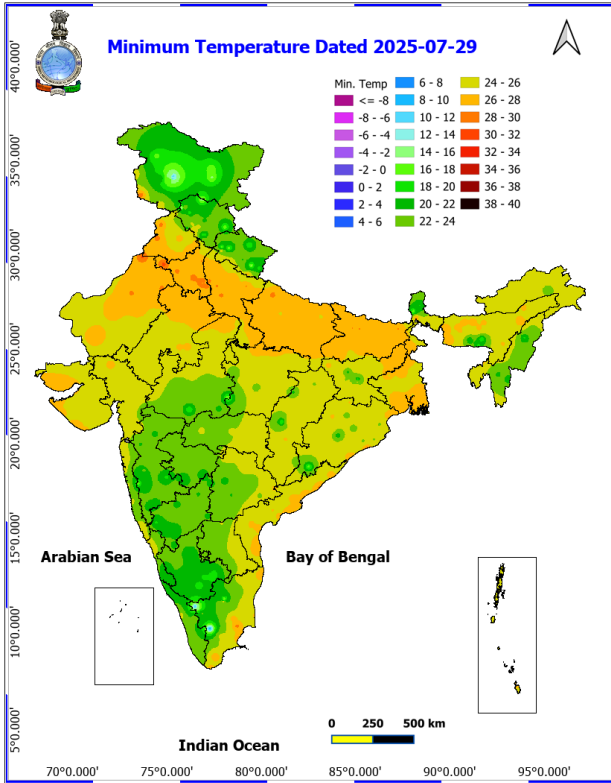
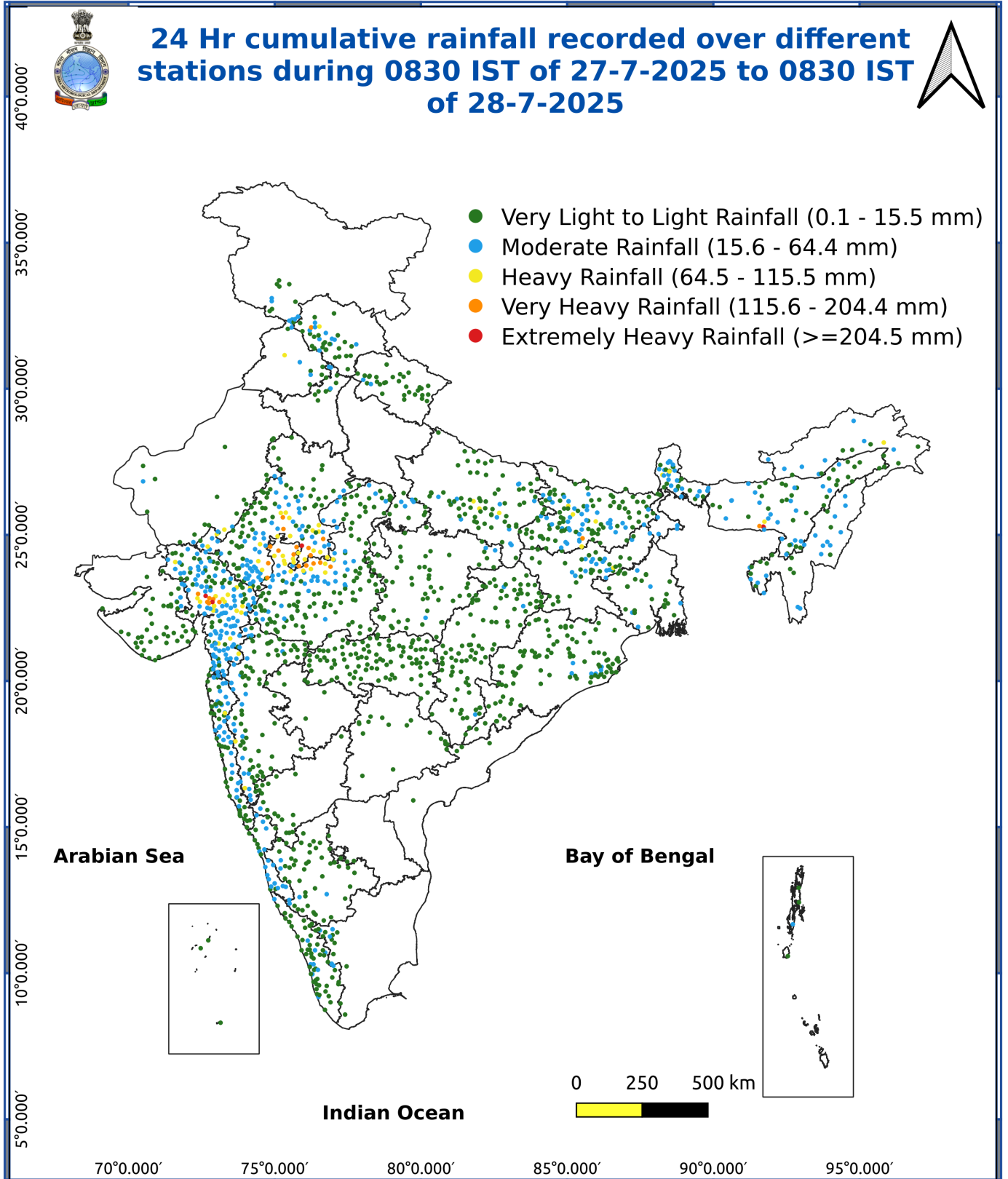


Fig. 3: Minimum Temperatures Dated 2025-07-29

Fig. 4: Departure of Minimum Temp. Dated 2025-07-29





### Impact & Action Suggested due to

- **Extremely heavy rainfall** very likely at isolated places over East Rajasthan on 29<sup>th</sup> July.
- **Isolated very heavy rainfall** over West Uttar Pradesh, Himachal Pradesh, Bihar, Madhya Pradesh on 29<sup>th</sup> July; East Rajasthan on 30<sup>th</sup> & 31<sup>st</sup> July; Arunachal Pradesh, Assam during 01<sup>st</sup>-03<sup>rd</sup> August; Sub-Himalayan West Bengal & Sikkim on 02<sup>nd</sup> & 03<sup>rd</sup> August.

### Impact Expected

- Localized Flooding of roads, water logging in low lying areas and closure of underpasses mainly in urban areas of the above region.
- Occasional reduction in visibility due to heavy rainfall.
- Disruption of traffic in major cities due to water logging in roads leading to increased travel time.
- Minor damage to kutcha roads.
- Possibilities of damage to vulnerable structure.
- Localized Landslides/Mudslides/landslips/mudslips/landsinks/mudsinks.
- Damage to horticulture and standing crops in some areas due to inundation.
- It may lead to riverine flooding in some river catchments (for riverine flooding please visit Web page of CWC)

### Action Suggested

- Check for traffic congestion on your route before leaving for your destination.
- Follow any traffic advisories that are issued in this regard.
- Avoid going to areas that face the water logging problems often.
- Avoid staying in vulnerable structure.

### Agromet advisories for various parts of the country

#### Agromet advisories for likely impact of Heavy / Heavy to Very Heavy / Extremely Heavy Rainfall

- In **East Rajasthan**, postpone sowing of green gram, pearl millet, cluster bean and sesame till cessation of heavy rains and make arrangement for removal of excess water from already sown fields in **Sub Humid Southern Plain and Aravali Hill Zone** and **Flood Prone Eastern Plain Zone**. In **Southern Humid Plain Zone**, postpone sowing of maize till cessation of heavy rains and ensure proper drainage in cotton and soybean fields to remove excess water. Make provision to drain out excess water from rice nurseries, fields of maize, soybean and black gram in **Southeastern Humid Plain zone** and fields of pearl millet and groundnut in **Semi Arid Eastern Plain Zone**.
- In **Madhya Pradesh**, provide adequate drainage in the fields of soybean and maize in **Malwa Plateau Zone**; rice, maize and soybean in **Kymore Plateau and Satpura Hill Zone**; soybean, rice, maize and pigeon pea in **Vindhyan Plateau Zone**; rice and vegetables in **Bundelkhand Zone**; maize, soybean, cotton, sugarcane and vegetables in **Satpura Plateau Zone**; soybean, maize, cotton and black gram in **Jhabua Hills Zone**; rice, soybean, maize, sugarcane and vegetables in **Central Narmada Valley Zone** and soybean, pigeon pea, cotton and vegetables in **Nimar Valley Zone**. In **Gird Zone**, postpone sowing of pearl millet and make arrangement to drain out excess water in fields of soybean, pigeon pea and transplanted rice.
- In **Chhattisgarh**, avoid sowing of pigeon pea during spells of heavy rainfall. Drain out excess water from rice nurseries, fields of soybean, pigeon pea, green gram, black gram, maize, sugarcane and vegetables in **Plain Zone**; fields of rice, minor millets, maize, pulses and oilseeds in **Bastar Plateau Zone** and fields of pigeon pea, vegetables and transplanted rice in **North Hill Zone**.
- In **Maharashtra**, make arrangement to drain out excess water from rice, finger millet, turmeric, groundnut and newly planted coconut, arecanut, mango and cashew in **Konkan**; rice and finger millet fields in **ghat areas of Madhya Maharashtra**; soybean, pearl millet, turmeric, sugarcane, orchards and vegetables in **Marathwada** and rice nurseries, orchards, vegetable nurseries, transplanted rice fields and already sown **kharif** crops like soybean, cotton and pigeon pea in **East Vidarbha**. Postpone transplanting of rice in **ghat**

\*Red color warning does not mean "Red Alert" Red color warning means "Take Action"

Forecast and warning for any day is valid from 0830 hours IST of day till 0830 hours IST of next day

For more details kindly visit <https://mausam.imd.gov.in> or contact 011-2434-4599

(Service to the nation since 1875)

areas of **Pune** and **Nashik** districts and **Raigad** and **Palghar** districts.

- In **Gujarat**, make necessary arrangements to drain out excess water from fields of groundnut, maize, pearl millet, green gram and sesame in **North Gujarat Zone**; transplanted rice, cotton, pearl millet, pigeon pea, soybean and vegetables in **Middle Gujarat Zone**; sugarcane, rice and vegetables in **South Gujarat Heavy Rainfall Zone** and sugarcane, cotton, pigeon pea, transplanted rice and vegetables in **South Gujarat Zone**.
- In **Uttarakhand**, maintain proper drainage channels in fields of rice in **Bhabar and Tarai Zone**, black gram in **Hill Zone** and rice, barnyard millet, finger millet and cucumber in **Sub Humid SubTropic Zone**.
- In **Karnataka**, postpone nursery sowing of rice and provide drainage in arecanut fields and banana orchards in **Coastal Zone**. In **Hill Zone**, make arrangements to drain out excess water from rice nurseries, fields of maize, cotton, ginger and plantations of arecanut. In **Southern Transition Zone**, provide proper drainage in arecanut and coconut fields. In **Southern Dry Zone**, provide staking / support to maize, tomato and banana crop. Ensure proper drainage to prevent waterlogging especially in rice, vegetables and spice crops.
- In **Kerala**, provide adequate drainage in fields of rice, coconut, banana and ginger. Postpone nursery / transplanting of rice. Provide staking in vegetables.
- In **Arunachal Pradesh**, harvest matured soybean immediately and store in safer place. Postpone sowing / transplanting of millet and transplanting of rice during heavy rainfall. Maintain drainage in already sown / transplanted finger millet, orchards, fields of vegetables and transplanted rice.
- In **Assam**, to avoid waterlogging ensure proper drainage in fields of *Sali* rice, sugarcane, sesame and fruit orchards in **Hill Zone**; jute and *Sali* rice fields in **Lower Brahmaputra Valley Zone**; *Sali* rice fields and arecanut plantations in **Upper Brahmaputra Valley Zone**; *Sali* rice fields in **Barak Valley Zone** and *Sali* rice nurseries, fields of maize, jute, sugarcane, vegetables and transplanted *Sali* rice in **Central Brahmaputra Valley Zone**.
- In **Meghalaya**, avoid sowing of rice in nurseries especially in valley lands. Maintain proper drainage channels around the nursery beds. Make provision for draining out excess water from vegetable fields and repair bunds in lowland paddy fields.
- In **Tripura**, drain out excess water from early transplanted *Sali* rice fields. Clean the drainage channels in rice and vegetable fields to ensure quick removal of excess water.
- In **Manipur**, provide adequate drainage in fields of soybean, groundnut, finger millet, maize, black gram, ginger, turmeric, vegetables and fruit orchards.
- In **Nagaland**, provide proper drainage channels in fields of maize and ginger to avoid water stagnation.
- In **Mizoram**, harvest matured cobs of maize. Create strong bunds around rice fields to retain rainwater and reduce runoff.

### Livestock / Fishery

- Keep the animals inside the shed during heavy rainfall and provide them balanced feed.
- Store feed and fodder in a safe place to prevent spoilage.
- Construct an outlet with proper netting around the ponds to drain out excess water, thereby preventing fish from escaping in case of overflow.

### Agromet advisories for likely impact of Thunderstorm / Gusty Winds / Squally Winds

- Provide mechanical support to horticultural crops and staking or support to vegetables and young fruit plants / fruit-bearing plants to avoid lodging due to strong winds.

## LEGENDS

- 1 अंडमान और निकोबार द्वीप समुह
- 2 अरुणाचल प्रदेश
- 3 असम और मेघालय
- 4 नागालैंड मनीपुर मीजोरम और त्रिपुरा
- 5 उप हिमालय पश्चिम बंगाल एवं सिक्किम
- 6 पश्चिम बांगाल
- 7 ओडिसा
- 8 झारखंड
- 9 बिहार
- 10 पूर्वी उत्तर प्रदेश
- 11 पश्चिम उत्तर प्रदेश
- 12 उत्तराखंड
- 13 हरियाणा चंडीगढ़ एवं दिल्ली
- 14 पंजाब
- 15 हिमाचल प्रदेश
- 16 जम्मू एवं कश्मीर एवं लद्दाख
- 17 पश्चिम राजस्थान
- 18 पूर्वी राजस्थान
- 19 पश्चिम मध्य प्रदेश
- 20 पूर्वी मध्य प्रदेश
- 21 गुजरात क्षेत्र
- 22 सौराष्ट्र एवं कच्छ
- 23 कोंकण एवं गोवा
- 24 मध्य महाराष्ट्र
- 25 मराठावाडा
- 26 विदर्भ
- 27 छत्तीसगढ़
- 28 तटीय आंध्र प्रदेश एवं यनम
- 29 तेलंगाना
- 30 रायलसीमा
- 31 तमिलनाडु, पुदुचेरी एवं कराईकल
- 32 तटिय कर्नाटक
- 33 आंतरिक उत्तरी कर्नाटक
- 34 आंतरिक दक्षिणी कर्नाटक
- 35 केरल एवं माहे
- 36 लक्षद्वीप



1. Andaman & Nicobar Islands
2. Arunachal Pradesh
3. Assam & Meghalaya
4. Nagaland, Manipur, Mizoram & Tripura
5. Sub-Himalayan West Bengal & Sikkim
6. Gangetic West Bengal
7. Orissa
8. Jharkhand
9. Bihar
10. East Uttar Pradesh
11. West Uttar Pradesh
12. Uttarakhand
13. Haryana, Chd & Delhi
14. Punjab
15. Himachal Pradesh
16. Jammu & Kashmir and Ladakh
17. West Rajasthan
18. East Rajasthan
19. West Madhya Pradesh
20. East Madhya Pradesh
21. Gujarat
22. Saurashtra
23. Konkan & Goa
24. Madhya Maharashtra
25. Marathawada
26. Vidharbha
27. Chhattisgarh
28. Coastal Andhra Pradesh & Yanam
29. Telangana
30. Rayalaseema
31. Tamilnadu, Puducherry & Karaikal
32. Coastal Karnataka
33. North Interior Karnataka
34. South Interior Karnataka
35. Kerala & Mahe
36. Lakshadweep

## SPATIAL DISTRIBUTION (% of Stations reporting)

| % Stations | Category                             | % Stations | Category                      |
|------------|--------------------------------------|------------|-------------------------------|
| 76-100     | Widespread (WS/ Most Places)         | 26-50      | Scattered (SCT/ A Few Places) |
| 51-75      | Fairly Widespread (FWS/ Many Places) | 1-25       | Isolated (ISOL)               |

### Subdivision Colour

- NO WARNING
- WATCH (BE UPDATED)
- ALERT (BE PREPARED TO TAKE ACTION)
- WARNING (TAKE ACTION)

### Probabilistic Forecast

| Terms       | Probability of Occurrence (%) |
|-------------|-------------------------------|
| Unlikely    | < 25                          |
| Likely      | 25 - 50                       |
| Very Likely | 50 - 75                       |
| Most Likely | > 75                          |

- Heavy Rain
- Very Heavy Rain
- Extremely Heavy Rain
- Heavy Snow
- Thunderstorm & Lightning
- Hailstrom
- Dust Storm
- Dust Raising Winds
- Strong surface winds
- Heat Wave
- Hot Day
- Warm Night
- Cold Wave
- Cold Day
- Ground Frost
- FOG Fog
- Hot & Humid

\*Red color warning does not mean "Red Alert" Red color warning means "Take Action"

Forecast and warning for any day is valid from 0830 hours IST of day till 0830 hours IST of next day

For more details kindly visit <https://mausam.imd.gov.in> or contact 011-2434-4599

(Service to the nation since 1875)

## LEGENDS

### WARNING

|                         |
|-------------------------|
| WARNING (TAKE ACTION)   |
| ALERT ( BE PREPARED)    |
| WATCH (BE UPDATED)      |
| NO WARNING ( NO ACTION) |

### Probabilistic Forecast

| Terms       | Probability of Occurrence (%) |
|-------------|-------------------------------|
| Unlikely    | < 25                          |
| Likely      | 25 - 50                       |
| Very Likely | 50 - 75                       |
| Most Likely | > 75                          |



Heavy: 64.5 to 115.5 mm/cm \*  
Very Heavy: 115.6 to 204.4 mm/cm\*  
Extremely Heavy: > 204.4 mm/cm \*



When maximum temperature of a station reaches  $\geq 40^{\circ}\text{C}$  for plains and  $\geq 30^{\circ}\text{C}$  for hilly regions  
(a) Based on Departure from normal

Heat Wave: Maximum Temperature Departure from normal  $4.5^{\circ}\text{C}$  to  $6.4^{\circ}\text{C}$ .  
Severe Heat Wave: Maximum Temperature Departure from normal  $\geq 6.5^{\circ}\text{C}$

(b). Based on Actual maximum temperature

Heat Wave: When actual maximum temperature  $\geq 45^{\circ}\text{C}$ .  
Severe Heat Wave: When actual maximum temperature  $\geq 47^{\circ}\text{C}$

(c). Criteria for heat wave for coastal stations

When maximum temperature departure is  $> 4.5^{\circ}\text{C}$  from normal. Heat Wave may be described provided maximum temperature  $\geq 37^{\circ}\text{C}$



When maximum temperature remains  $40^{\circ}\text{C}$

Warm Night: When minimum temperature departure  $4.5^{\circ}\text{C}$  to  $6.4^{\circ}\text{C}$ .  
Severe Warm Night: When minimum temperature departure  $> 6.4^{\circ}\text{C}$ .



When minimum temperature of a station  $\leq 10^{\circ}\text{C}$  for plains and  $\leq 0^{\circ}\text{C}$  for hilly regions.  
(a). Based on departure

Cold Wave: Minimum Temperature Departure from normal  $-4.5^{\circ}\text{C}$  to  $-6.4^{\circ}\text{C}$ .  
Severe Cold Wave: Minimum Temperature Departure from normal  $\leq -6.5^{\circ}\text{C}$

(b) Based on actual Minimum Temperature (for Plains only)

Cold Wave : When Minimum Temperature is  $\leq 4.0^{\circ}\text{C}$   
Severe Cold Wave: When Minimum Temperature is  $\leq 2.0^{\circ}\text{C}$

(c) For Coastal Stations

When Minimum Temperature departure is  $\leq -4.5^{\circ}\text{C}$  & actual Minimum Temperature is  $\leq 15^{\circ}\text{C}$



When minimum temperature of a station  $\leq 10^{\circ}\text{C}$  for plains and  $\leq 0^{\circ}\text{C}$  for hilly regions  
Based on departure

Cold Day: Maximum Temperature Departure from normal  $-4.5^{\circ}\text{C}$  to  $-6.4^{\circ}\text{C}$ .  
Severe Cold Day: Maximum Temperature Departure from normal  $\leq -6.5^{\circ}\text{C}$



Phenomenon of small droplets suspended in air and the horizontal visibility  $< 1\text{km}$

Moderate Fog: When the visibility between 500-200 metres  
Dense Fog: when the visibility between 50- 200 metres  
Very Dense Fog: when the visibility  $< 50$  metres



Sudden electrical discharges manifested by a flash of light (Lightning) and a sharp rumbling sound (thunder)



An ensemble of particles of dust or sand energetically lifted to great heights by a strong and turbulent wind.



Ice deposits on ground

Air temperature  $\leq 4^{\circ}\text{C}$  ( over Plains)



A strong wind that rises suddenly, lasts for atleast 1 minute.

Moderate: Wind speed 52-61 kmph  
Severe: Wind speed 62-87 kmph  
Very Severe: Wind speed  $> 87$  kmph



Effect of various waves in the sea over specific area

Rough to very rough: Wind speed 41-62 kmph (22-33 knots) & Wave height 2.5-6 metre  
High to very high: Wind speed 63-117 kmph ( 34-63 knots) & Wave height 6-14 metre  
Phenomenal: Wind speed  $> 117$  kmph ( $> 63$  knots) & Wave height  $> 14$  metre



Cyclonic Storm: Wind speed 62-87 kmph (34-47 knots)  
Severe Cyclonic Storm: Wind speed 88-117 kmph (48-63 knots)  
Very Severe Cyclonic Storm: Wind speed 118-165 kmph (64 - 89 knots)  
Extremely Severe Cyclonic Storm: Wind speed 166-220 kmph (90 -119 knots)  
Super Cyclone Storm: Wind speed  $> 220$  kmph ( $> 119$  knots)

\*Red color warning does not mean "Red Alert" Red color warning means "Take Action"

Forecast and warning for any day is valid from 0830 hours IST of day till 0830 hours IST of next day

For more details kindly visit <https://mausam.imd.gov.in> or contact 011-2434-4599

(Service to the nation since 1875)