

2025-11-13

Time of Issue: 07:55:00 hours IST  
(Morning)

## ALL INDIA WEATHER SUMMARY AND FORECAST BULLETIN

### Significant Weather Features

#### Weather, Forecast and Warnings:

Light to moderate rainfall/thunderstorm at most/many places with **isolated heavy rainfall** very likely over Tamil Nadu on 17<sup>th</sup> & 18<sup>th</sup>; over Kerala & Mahe on 13<sup>th</sup>; over Coastal Andhra Pradesh & Yanam and Rayalaseema on 17<sup>th</sup> & 18<sup>th</sup> November.

Thunderstorm with lightning very likely over Tamil Nadu on 17<sup>th</sup> over Kerala & Mahe on 13<sup>th</sup> & 14<sup>th</sup>; over Coastal Karnataka and South Interior Karnataka on 17<sup>th</sup> & 18<sup>th</sup> November.

#### Forecast of temperature and cold wave and cold day warnings:

**Cold wave to Severe Cold wave conditions** very likely at isolated places over West Madhya Pradesh and at a few places over Chhattisgarh on 13<sup>th</sup> and **Cold wave conditions** in isolated pockets on 14<sup>th</sup> & 15<sup>th</sup> November.

**Cold wave conditions** very likely to prevail in isolated pockets over East Rajasthan and East Madhya Pradesh during 13<sup>th</sup> – 15<sup>th</sup> November.

**Cold day conditions** very likely to prevail in isolated pockets over East Madhya Pradesh on 13<sup>th</sup> November.

**Shallow to moderate fog conditions** likely over Northeast India during next 5 days.

Fall in minimum temperature over Northeast India by 2-3°C for next 4-5 days and no large change thereafter during subsequent 2 days.

No large change in minimum temperature likely over northwest, west, central and east India during next 6-7 days.

**Main Weather Observations:**

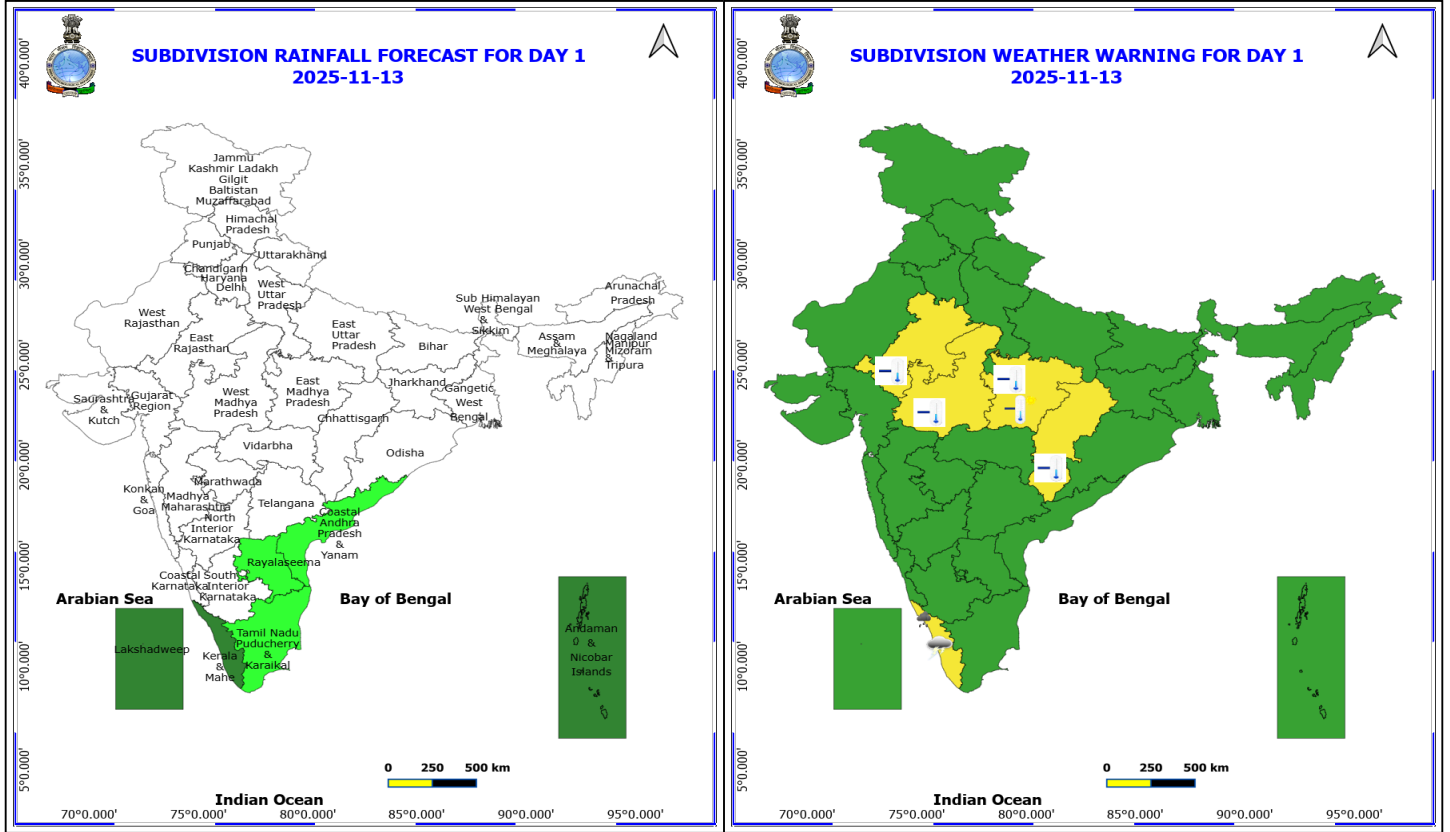
- ❖ **Rainfall distribution** (from 0830 hours IST of yesterday to 0530 hours IST of today): **at many places** over Tamilnadu Puducherry & Karaikal, Kerala & Mahe and Andaman & Nicobar Islands; **Dry** over rest of the country.
- ❖ **Significant rainfall recorded(in cm)** (from 0830 hours IST of yesterday to 0530 hours IST of today): **Tamilnadu Puducherry & Karaikal:** Pamban (dist Ramanathapuram), Kanyakumari (dist Kanyakumari) 1 Each; **Kerala & Mahe:** Thiruvananthapuram-city (dist Thiruvananthapuram) 1.
- ❖ **Fog Condition Observed (at 0530 hours of today): Shallow fog conditions:** at a few places over Haryana Chandigarh & Delhi, at isolated places over Assam & Meghalaya, Nagaland, Manipur, Mizoram & Tripura, Bihar, East Uttar Pradesh and West Madhya Pradesh.
- ❖ **Visibility reported (at 0530 hours of today):** West Madhya Pradesh: Gwalior (dist Gwalior) 500.0; East Uttar Pradesh: Kanpur Airforce (dist Kanpur Nagar) 500.0; Assam & Meghalaya: Barapani/shillong (dist East Khasi Hills) 500.0; Nagaland, Manipur, Mizoram & Tripura: Dimapur (dist Dimapur) 500.0; Haryana Chandigarh & Delhi: New Delhi (safdarjung), New Delhi (palam) AP (dist South West Delhi) 500.0 Each; Bihar: Purnea (dist Purnia) 500.0.
- ❖ **Minimum Temperature Departures (as on 12-11-2025): below normal(-1.6°C to -3.0°C)** at isolated places over Jharkhand and Vidarbha. **markedly below normal(< -5.0°C )** at most places over East Madhya Pradesh. **The lowest minimum temperature** of 10.0°C is reported at PHULBANI (ORISSA), and JAMMU (JAMMU & KASHMIR UT) over the Plains of India.
- ❖ **Maximum Temperature Departures (as on 12-11-2025): The highest maximum temperature** of 34.2°C is reported at ERODE-OBS (TAMIL NADU).

**Meteorological Analysis (Based on 0530 hours IST)**

- The **upper air cyclonic circulation** over southwest and adjoining southeast Bay of Bengal extending upto 1.5 km above mean sea level persists.
- The **upper air cyclonic circulation** over north Haryana and neighbourhood at 3.1 km above mean sea level persists.
- The **upper air cyclonic circulation** over northeast Assam & neighbourhood persists and now extends upto 0.9 km above mean sea level.

**Weather Outlook for subsequent 3 days**

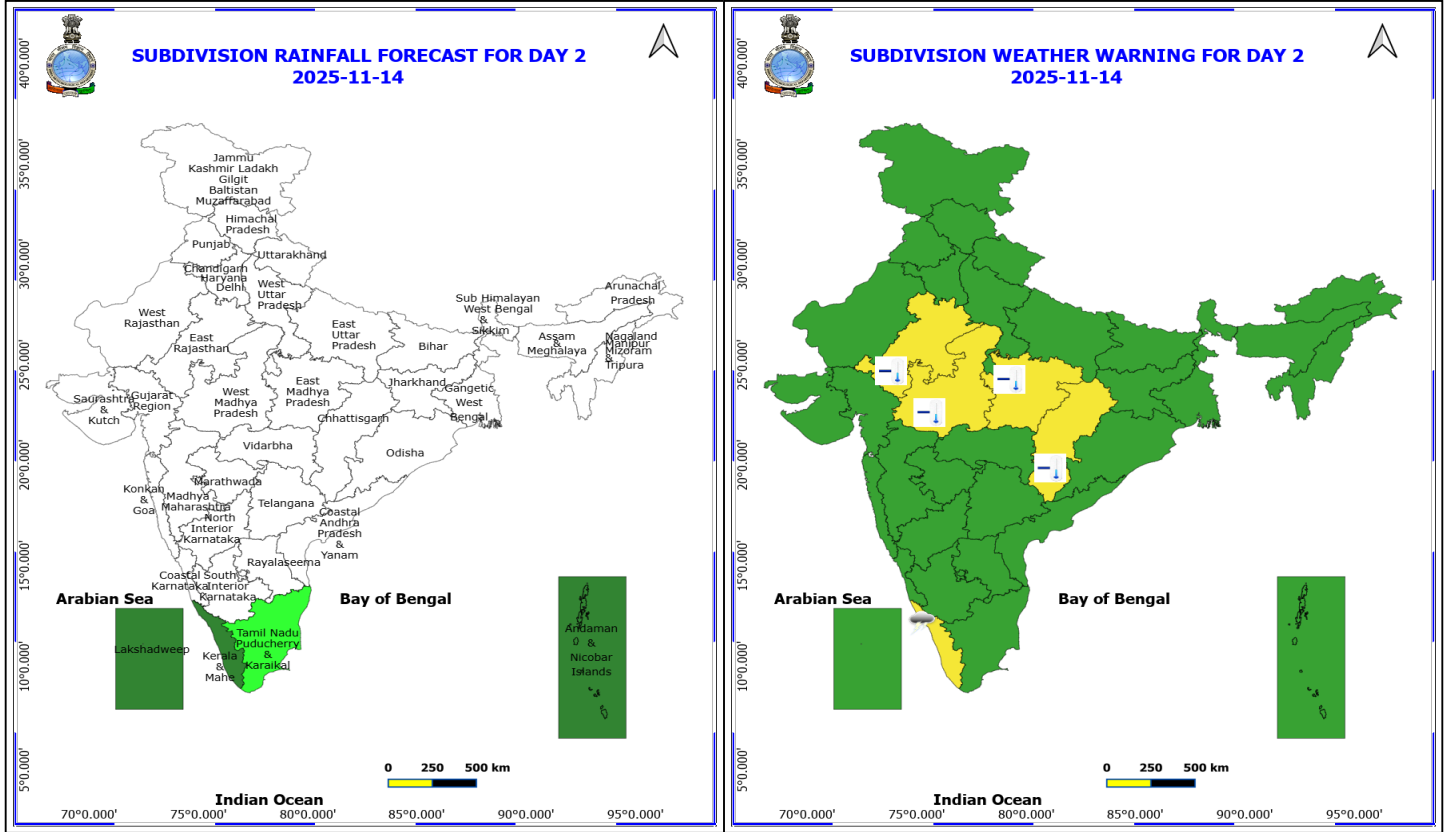
- fairly widespread to widespread rainfall activity likely over Tamil Nadu, Kerala and Islands.
- Isolated to Scattered rainfall activity over Coastal Andhra Pradesh, Coastal Karnataka and South Interior Karnataka.



**13 November (Day 1)**

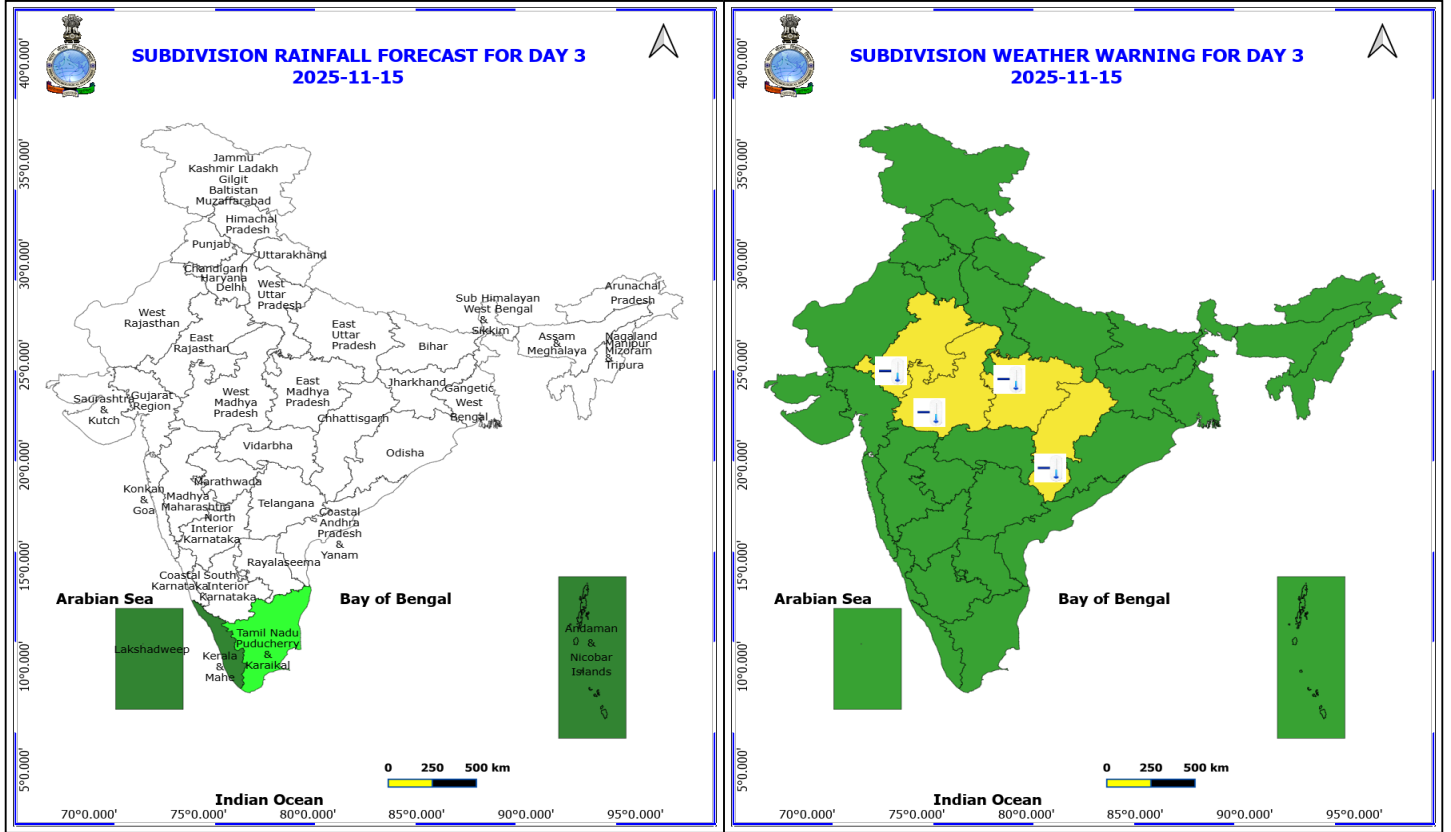
- ❖ **Heavy Rainfall** very likely at isolated places over Kerala & Mahe.
- ❖ **Thunderstorm accompanied with Lightning** very likely at isolated places over Kerala & Mahe.
- ❖ **Cold wave conditions** very likely at isolated places over Chhattisgarh, East Rajasthan and Madhya Pradesh.
- ❖ **Cold Day** very likely at isolated places over East Madhya Pradesh.
  - Squally weather with wind speeds reaching 35 kmph to 45 kmph gusting to 55 kmph will prevail along and off south Kerala coast, adjoining Lakshadweep and Comorin areas.

**\*Red color warning does not mean "Red Alert" Red color warning means "Take Action"**  
 Forecast and warning for any day is valid from 0830 hours IST of day till 0830 hours IST of next day  
 For more details kindly visit <https://mausam.imd.gov.in> or contact 011-2434-4599  
 (Service to the nation since 1875)



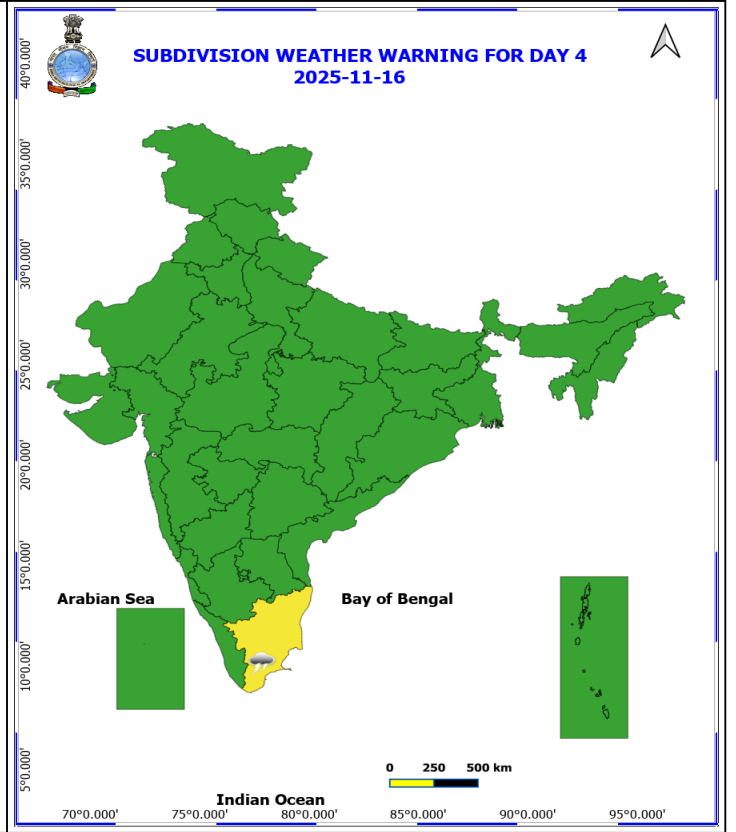
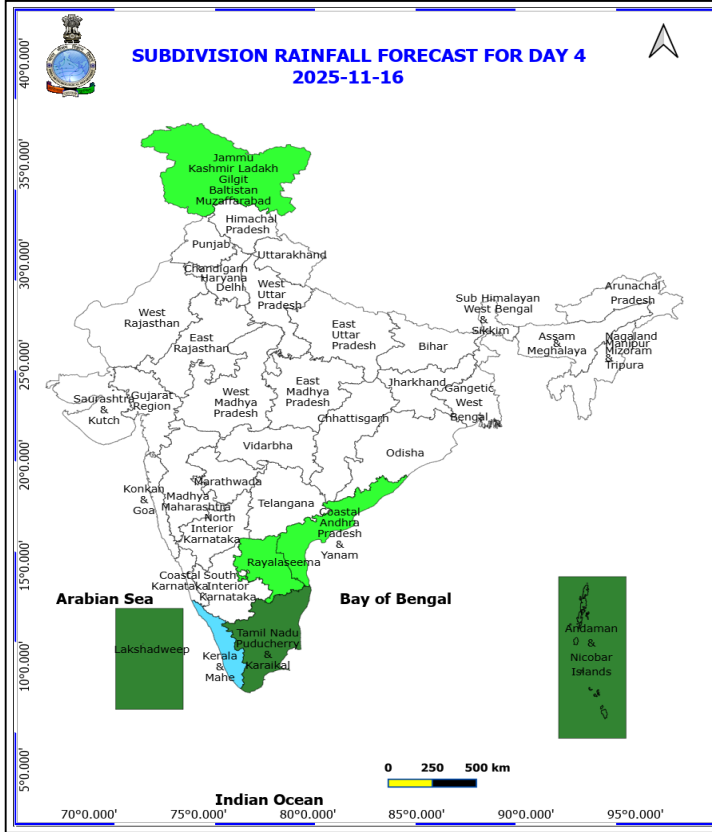
**14 November (Day 2)**

- ❖ **Thunderstorm accompanied with Lightning** very likely at isolated places over Kerala & Mahe.
- ❖ **Cold wave conditions** very likely at isolated places over Chhattisgarh, East Rajasthan and Madhya Pradesh.
  - Squally weather with wind speeds reaching 35 kmph to 45 kmph gusting to 55 kmph will prevail along and off Sri Lanka coast, adjoining & many parts of southwest Bay of Bengal, Gulf of Mannar, adjoining Comorin area.



**15 November (Day 3)**

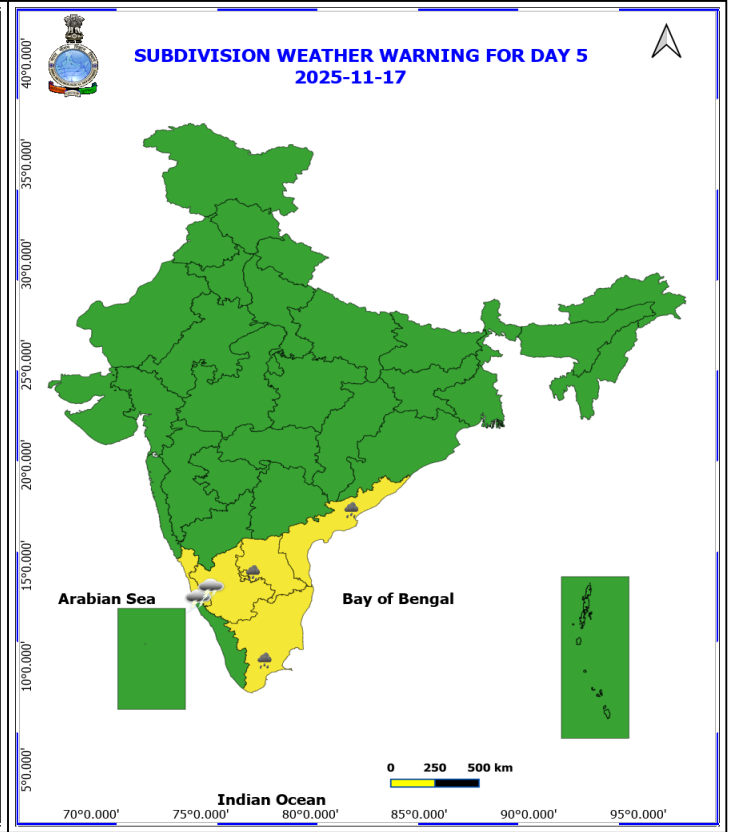
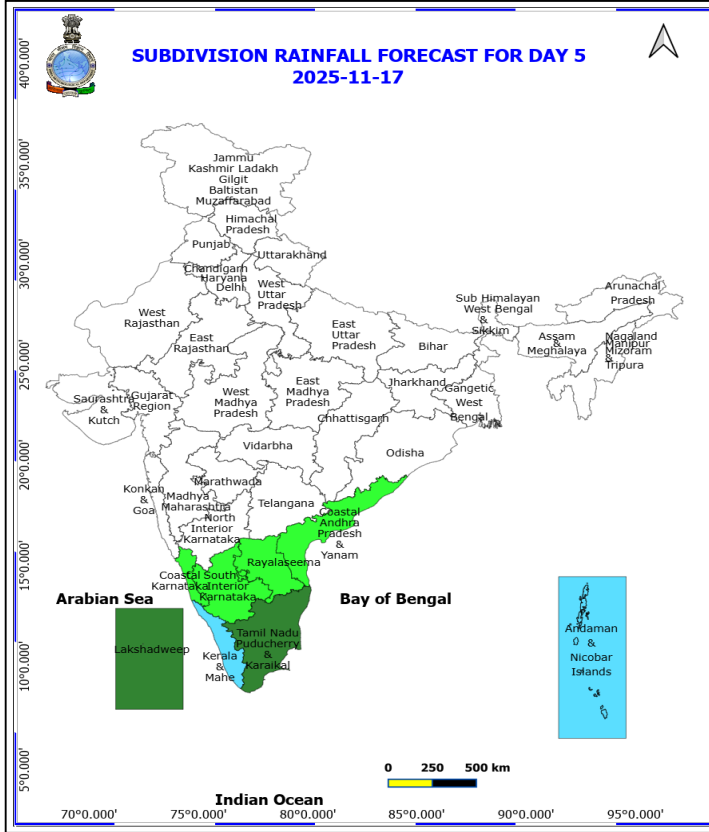
- ❖ **Cold wave conditions** very likely at isolated places over Chhattisgarh, East Rajasthan and Madhya Pradesh.
- Squally weather with wind speeds reaching 35 kmph to 45 kmph gusting to 55 kmph will prevail along and off Sri Lanka coast, adjoining & many parts of southwest Bay of Bengal, Gulf of Mannar, adjoining Comorin area.



**16 November (Day 4)**

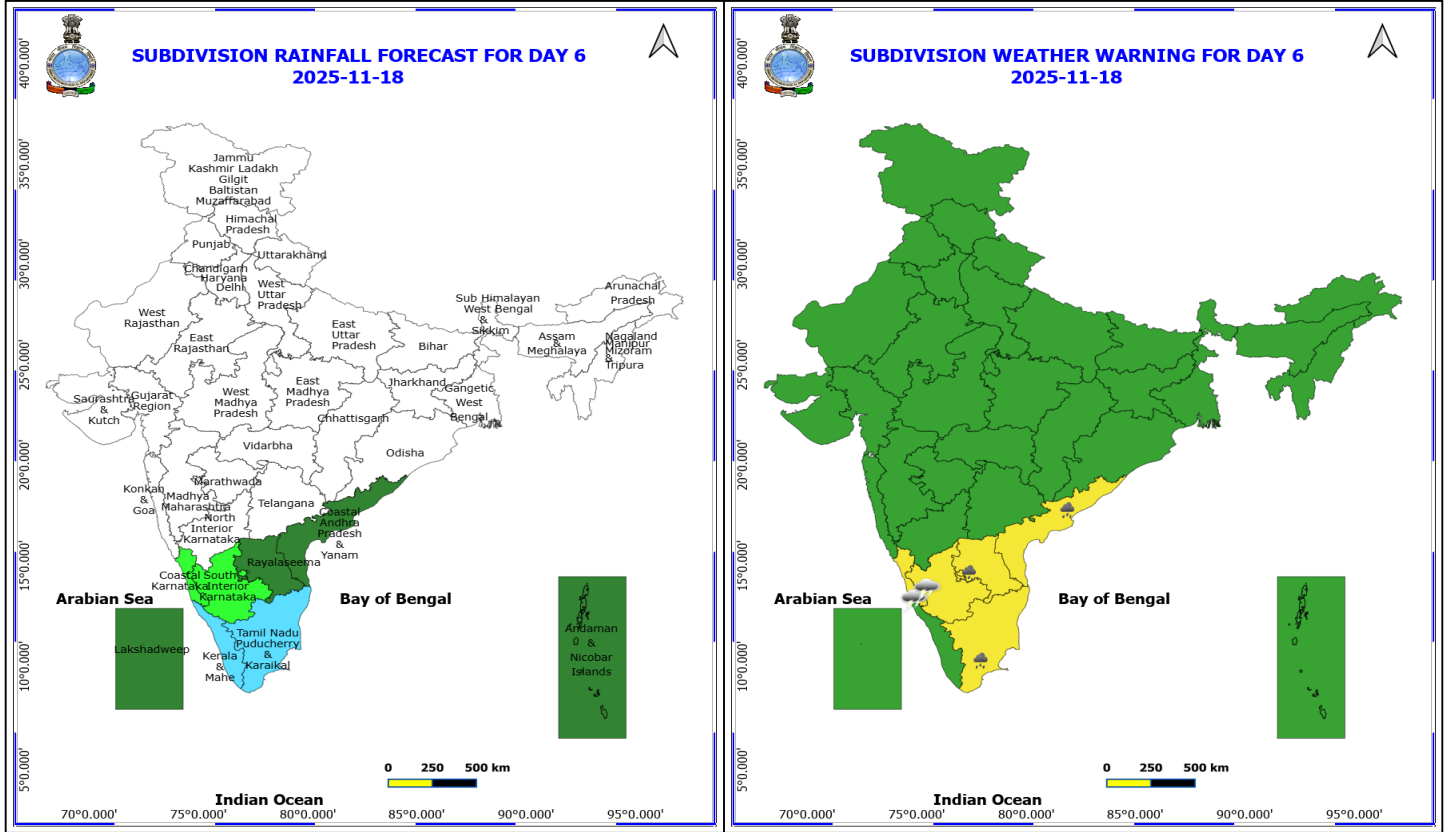
❖ **Thunderstorm accompanied with Lightning** likely at isolated places over Tamil Nadu Puducherry & Karaikal.

**No Fishermen Warning**



**17 November (Day 5)**

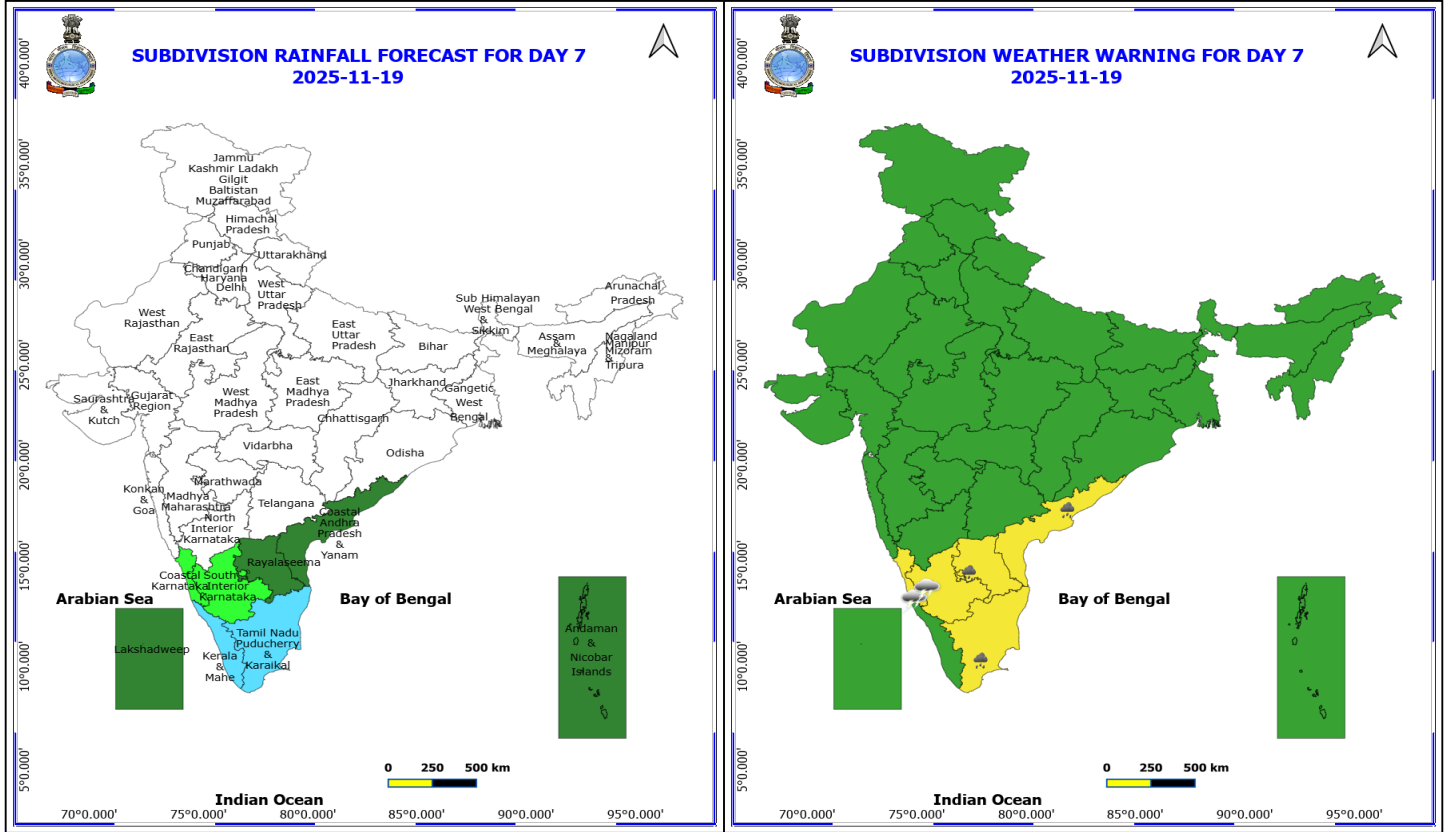
- ❖ **Heavy Rainfall** likely at isolated places over Andhra Pradesh and Tamil Nadu Puducherry & Karaikal.
  - ❖ **Thunderstorm accompanied with Lightning** likely at isolated places over Coastal Karnataka and South Interior Karnataka.
- No Fishermen Warning**



**18 November (Day 6)**

- ❖ **Heavy Rainfall** likely at isolated places over Andhra Pradesh and Tamil Nadu Puducherry & Karaikal.
  - ❖ **Thunderstorm accompanied with Lightning** likely at isolated places over Coastal Karnataka and South Interior Karnataka.
- No Fishermen Warning**

**\*Red color warning does not mean "Red Alert" Red color warning means "Take Action"**  
Forecast and warning for any day is valid from 0830 hours IST of day till 0830 hours IST of next day  
For more details kindly visit <https://mausam.imd.gov.in> or contact 011-2434-4599  
(Service to the nation since 1875)



**19 November (Day 7)**

- ❖ **Heavy Rainfall** likely at isolated places over Andhra Pradesh and Tamil Nadu Puducherry & Karaikal.
  - ❖ **Thunderstorm accompanied with Lightning** likely at isolated places over Coastal Karnataka and South Interior Karnataka.
- No Fishermen Warning**

**\*Red color warning does not mean "Red Alert" Red color warning means "Take Action"**  
 Forecast and warning for any day is valid from 0830 hours IST of day till 0830 hours IST of next day  
 For more details kindly visit <https://mausam.imd.gov.in> or contact 011-2434-4599  
 (Service to the nation since 1875)



## Table-1

### 7 Days Rainfall Forecast

S.No.	Subdivision	13- Nov	14- Nov	15- Nov	16- Nov	17- Nov	18- Nov	19- Nov
		Day 1	Day 2	Day 3	Day 4	Day 5	Day 6	Day 7
1	ANDAMAN & NICOBAR ISLANDS	SCT	SCT	SCT	SCT	FWS	SCT	SCT
2	ARUNACHAL PRADESH	DRY	DRY	DRY	DRY	DRY	DRY	DRY
3	ASSAM & MEHGHALAYA	DRY	DRY	DRY	DRY	DRY	DRY	DRY
4	N. M. M. & T.	DRY	DRY	DRY	DRY	DRY	DRY	DRY
5	S.H. WEST BENGAL & SIKKIM	DRY	DRY	DRY	DRY	DRY	DRY	DRY
6	GANGETIC WEST BENGAL	DRY	DRY	DRY	DRY	DRY	DRY	DRY
7	ODISHA	DRY	DRY	DRY	DRY	DRY	DRY	DRY
8	JHARKHAND	DRY	DRY	DRY	DRY	DRY	DRY	DRY
9	BIHAR	DRY	DRY	DRY	DRY	DRY	DRY	DRY
10	EAST UTTAR PRADESH	DRY	DRY	DRY	DRY	DRY	DRY	DRY
11	WEST UTTAR PRADESH	DRY	DRY	DRY	DRY	DRY	DRY	DRY
12	UTTARAKHAND	DRY	DRY	DRY	DRY	DRY	DRY	DRY
13	HARYANA, CHD & DELHI	DRY	DRY	DRY	DRY	DRY	DRY	DRY
14	PUNJAB	DRY	DRY	DRY	DRY	DRY	DRY	DRY
15	HIMACHAL PRADESH	DRY	DRY	DRY	DRY	DRY	DRY	DRY
16	JAMMU AND KASHMIR AND LADAKH	DRY	DRY	DRY	ISOL	DRY	DRY	DRY
17	WEST RAJASTHAN	DRY	DRY	DRY	DRY	DRY	DRY	DRY
18	EAST RAJASTHAN	DRY	DRY	DRY	DRY	DRY	DRY	DRY
19	WEST MADHYA PRADESH	DRY	DRY	DRY	DRY	DRY	DRY	DRY
20	EAST MADHYA PRADESH	DRY	DRY	DRY	DRY	DRY	DRY	DRY
21	GUJRAT REGION	DRY	DRY	DRY	DRY	DRY	DRY	DRY
22	SAURASHTRA & KUTCH	DRY	DRY	DRY	DRY	DRY	DRY	DRY
23	KONKAN & GOA	DRY	DRY	DRY	DRY	DRY	DRY	DRY
24	MADHYA MAHARASHTRA	DRY	DRY	DRY	DRY	DRY	DRY	DRY
25	MARATHWADA	DRY	DRY	DRY	DRY	DRY	DRY	DRY
26	VIDARBHA	DRY	DRY	DRY	DRY	DRY	DRY	DRY
27	CHATTISGARH	DRY	DRY	DRY	DRY	DRY	DRY	DRY
28	COASTAL ANDHRA PRADESH	ISOL	DRY	DRY	ISOL	ISOL	SCT	SCT
29	TELANGANA	DRY	DRY	DRY	DRY	DRY	DRY	DRY
30	RAYALASEEMA	ISOL	DRY	DRY	ISOL	ISOL	SCT	SCT
31	TAMILNADU & PUDUCHERRY	ISOL	ISOL	ISOL	SCT	SCT	FWS	FWS
32	COSTAL KARNATAKA	DRY	DRY	DRY	DRY	ISOL	ISOL	ISOL
33	NORTH INTERIOR KARNATAKA	DRY	DRY	DRY	DRY	DRY	DRY	DRY
34	SOUTH INTERIOR KARNATAKA	DRY	DRY	DRY	DRY	ISOL	ISOL	ISOL
35	KERALA	SCT	SCT	SCT	FWS	FWS	FWS	FWS
36	LAKSHDWEEP	SCT	SCT	SCT	SCT	SCT	SCT	SCT

Legend	Category	%Stations
WS	Widespread/Most Places	76-100
FWS	Fairly Widespread/Many Places	51-75
SCT	Scattered/ A Few Places	26-50
ISOL	Isolated Places	1-25
DRY	No Rain	0

\*Red color warning does not mean "Red Alert" Red color warning means "Take Action"  
Forecast and warning for any day is valid from 0830 hours IST of day till 0830 hours IST of next day  
For more details kindly visit <https://mausam.imd.gov.in> or contact 011-2434-4599

(Service to the nation since 1875)

Fig. 1: Maximum Temperatures Dated 2025-11-12

Fig. 2: Departure of Maximum Temp. Dated 2025-11-12

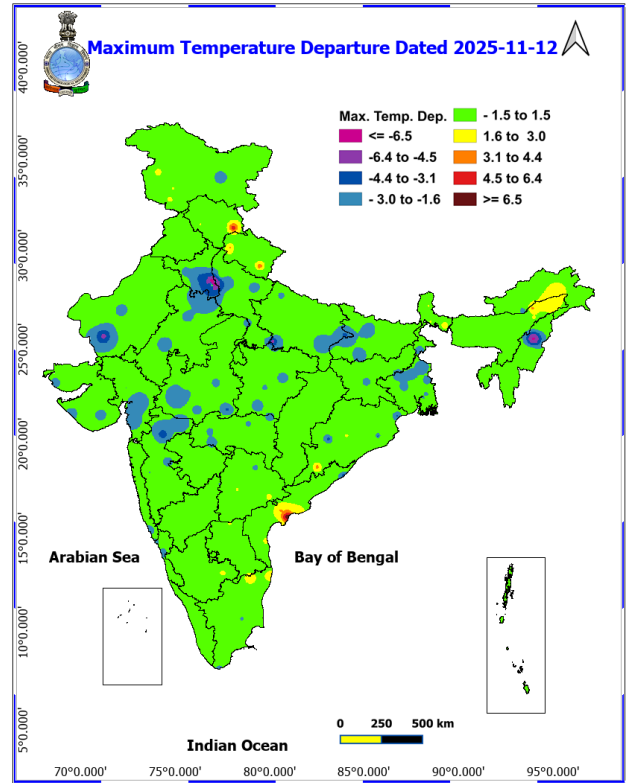
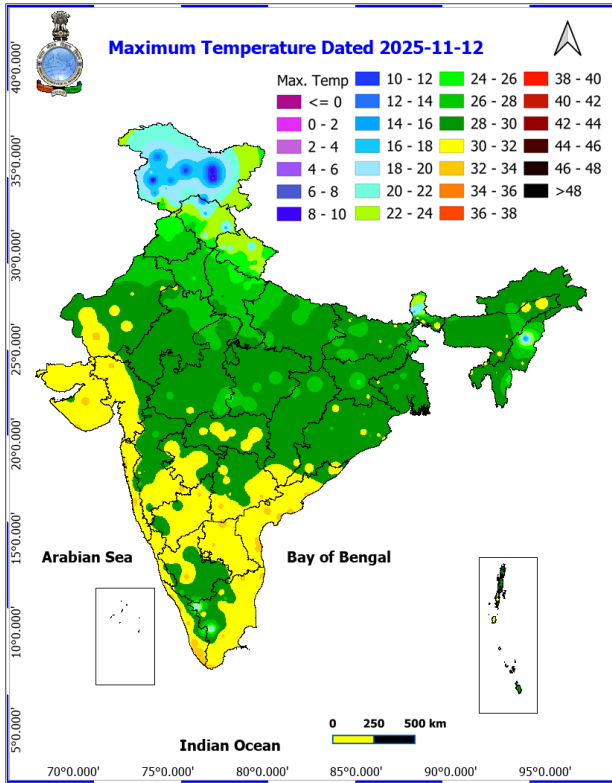
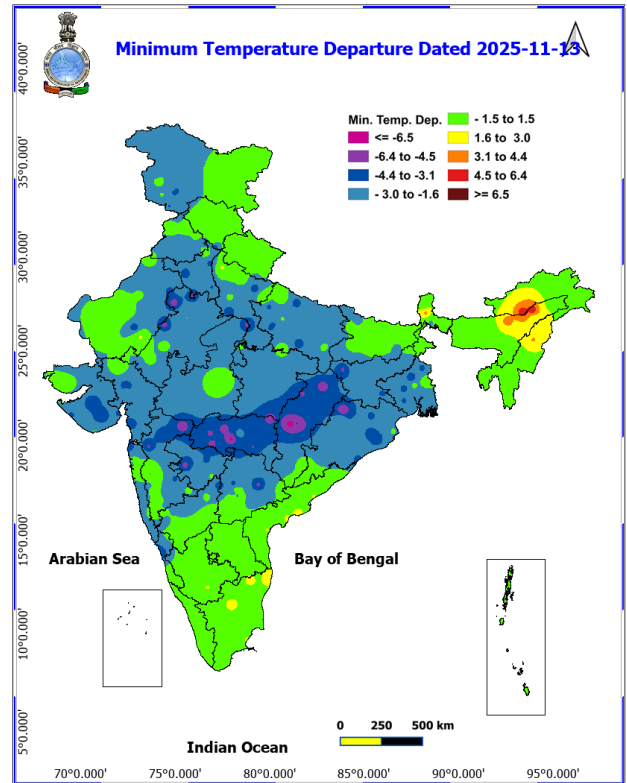
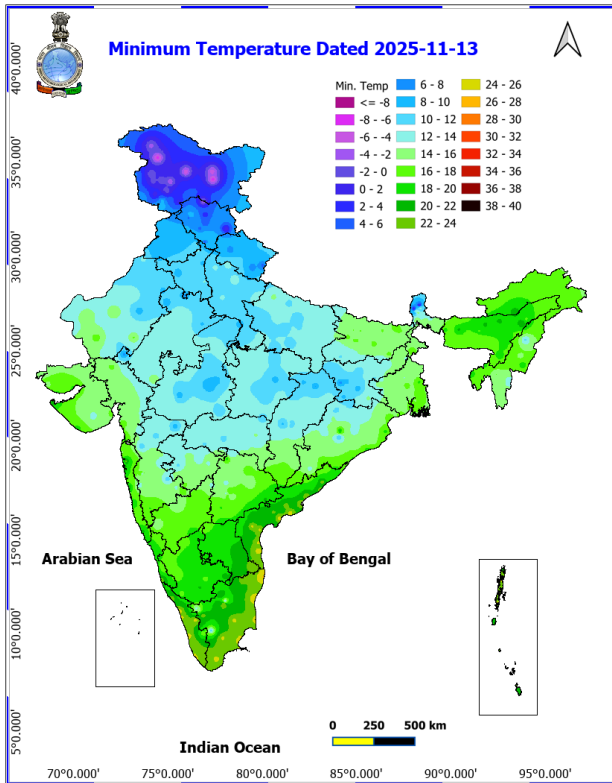
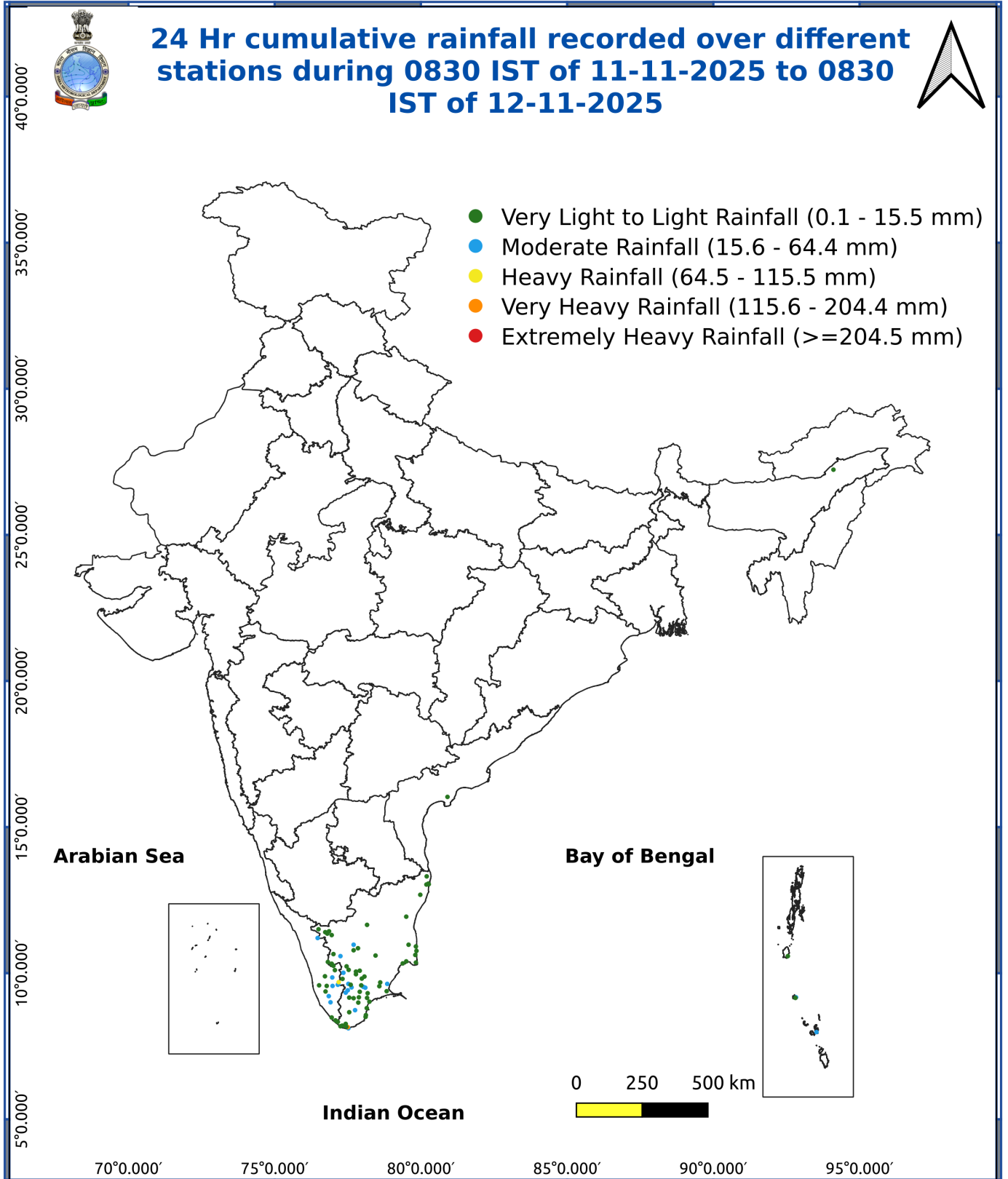


Fig. 3: Minimum Temperatures Dated 2025-11-12

Fig. 4: Departure of Minimum Temp. Dated 2025-11-12





**Cold wave to Severe Cold wave conditions very likely** over Madhya Pradesh on 13th November.

**Impact Expected:**

- An increased likelihood of various illnesses like flu, running/ stuffy nose or nosebleed, which usually set in or get aggravated due to prolonged exposure to cold.
- Do not ignore shivering. It is the first sign that the body is losing heat. Get Indoors.
- Frostbite can occur due to prolonged exposure to cold. The skin turns pale, hard and numb and eventually black blisters appear on exposed body parts such as fingers, toes, nose and or earlobes. Severe frostbite needs immediate medical attention and treatment.
- Impact on agriculture, crop, livestock, water supply, transport and power sector at some places.

**Action suggested:**

- Wear several layers of loose fitting, light weight; warm woollen clothing.
- Cover your head, neck, hands and toes adequately as majority of heat loss occurs through these body parts. Wear several layers of loose fitting, light weight; warm Woolen clothing rather than one layer of heavy cloth.
- Eat vitamin-C rich fruits & vegetable and drink sufficient fluids preferably warm fluids to maintain adequate immunity.
- Avoid or limit outdoor activities.
- Keep dry, if wet, change cloths immediately to prevent loss of body heat. Wear insulated/waterproof shoes.
- Warm the affected area of the body slowly with lukewarm water; do not rub the skin vigorously.
- If the affected skin area turns black, immediately consult a doctor.
- Maintain ventilation while using Heaters to avoid inhaling toxic fumes.
- Take safety measures while using electrical and gas heating devices.
- Extreme care needed for vulnerable people.
- Seek medical attention as soon as possible for someone suffering from frostbite/ Hypothermia.
- Protect livestock from cold weather.

**Agromet advisories for various parts of the country**

**Agromet advisories for likely impact of Heavy Rainfall / Cold Wave**

In **Tamil Nadu**, harvest matured rice and groundnut crops only during clear weather and store the harvested produce in safer places. Make arrangements to drain out excess water from fields of rice, sugarcane, cotton, black gram, maize and vegetables and plantations of coconut, banana and black pepper to avoid water stagnation. Provide support to banana plants with wooden poles to prevent them from falling.

In **East Rajasthan, Madhya Pradesh and Chhattisgarh**, apply light and frequent irrigation to the standing crops in the evening to protect the crops from low temperature stress or cold injuries. Use mulching and cover vegetable nurseries and young fruit plants with straw / polythene sheets to maintain optimum soil temperature.

**Livestock / poultry/ Fishery**

- Keep the animals inside the shed during heavy rainfall and provide them balanced feed.
- Store feed and fodder in a safe place to prevent spoilage.
- Construct an outlet with proper netting around the ponds to drain out excess water, thereby preventing fish from escaping in case of overflow.
- Keep cattle inside the sheds during night and provide dry bedding to protect them from cold.
- Keep the chicks warm by providing artificial light in the poultry sheds.

**Agromet advisories for likely impact of Thunderstorm**

Provide mechanical support to horticultural crops and staking or support to vegetables and young fruit plants / fruit-

**\*Red color warning does not mean "Red Alert" Red color warning means "Take Action"**

Forecast and warning for any day is valid from 0830 hours IST of day till 0830 hours IST of next day

For more details kindly visit <https://mausam.imd.gov.in> or contact 011-2434-4599

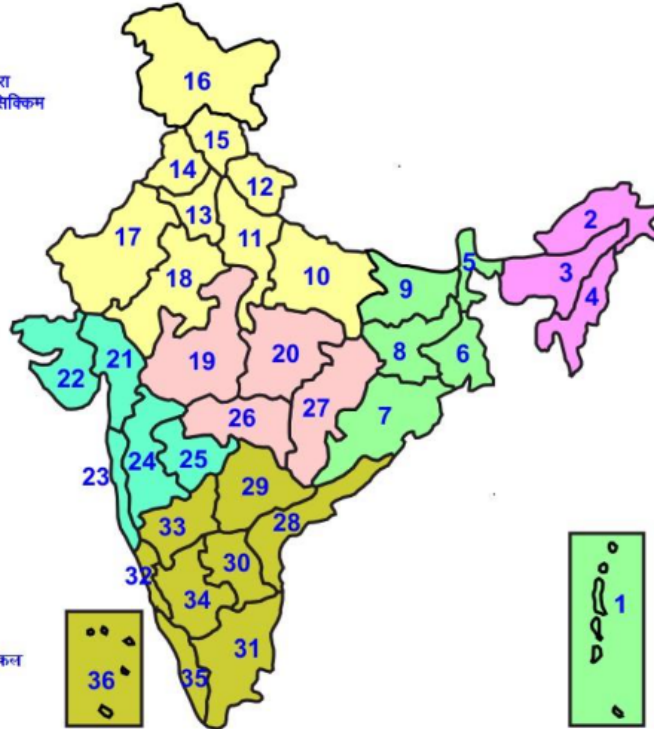
(Service to the nation since 1875)



bearing plants to avoid lodging due to strong winds.

## LEGENDS

- 1 अंडमान और निकोबार द्वीप समुह
- 2 अरुणाचल प्रदेश
- 3 असम और मेघालय
- 4 नागालैंड मनीपुर मीजोरम और त्रिपुरा
- 5 उप हिमालय पश्चिम बंगाल एवं सिक्किम
- 6 पश्चिम बंगाल
- 7 ओडिसा
- 8 झारखंड
- 9 बिहार
- 10 पूर्वी उत्तर प्रदेश
- 11 पश्चिम उत्तर प्रदेश
- 12 उत्तराखंड
- 13 हरियाणा चंडिगढ़ एवं दिल्ली
- 14 पंजाब
- 15 हिमाचल प्रदेश
- 16 जम्मू एवं कश्मीर एवं लद्दाख
- 17 पश्चिम राजस्थान
- 18 पूर्वी राजस्थान
- 19 पश्चिम मध्य प्रदेश
- 20 पूर्वी मध्य प्रदेश
- 21 गुजरात क्षेत्र
- 22 सौराष्ट्र एवं कच्छ
- 23 कोंकण एवं गोवा
- 24 मध्य महाराष्ट्र
- 25 मराठावाडा
- 26 विदर्भ
- 27 छत्तीसगढ़
- 28 तटीय आंध्र प्रदेश एवं यनम
- 29 तेलंगाना
- 30 रायलसीमा
- 31 तमिलनाडु, पुदुचेरी एवं कराईकल
- 32 तटिय कर्नाटक
- 33 आंतरिक उत्तरी कर्नाटक
- 34 आंतरिक दक्षिणी कर्नाटक
- 35 केरल एवं माहे
- 36 लक्षद्वीप



1. Andaman & Nicobar Islands
2. Arunachal Pradesh
3. Assam & Meghalaya
4. Nagaland, Manipur, Mizoram & Tripura
5. Sub-Himalayan West Bengal & Sikkim
6. Gangetic West Bengal
7. Orissa
8. Jharkhand
9. Bihar
10. East Uttar Pradesh
11. West Uttar Pradesh
12. Uttarakhand
13. Haryana, Chd & Delhi
14. Punjab
15. Himachal Pradesh
16. Jammu & Kashmir and Ladakh
17. West Rajasthan
18. East Rajasthan
19. West Madhya Pradesh
20. East Madhya Pradesh
21. Gujarat
22. Saurashtra
23. Konkan & Goa
24. Madhya Maharashtra
25. Marathawada
26. Vidharbha
27. Chhattisgarh
28. Coastal Andhra Pradesh & Yanam
29. Telangana
30. Rayalaseema
31. Tamilnadu, Puducherry & Karaikal
32. Coastal Karnataka
33. North Interior Karnataka
34. South Interior Karnataka
35. Kerala & Mahe
36. Lakshadweep

## SPATIAL DISTRIBUTION (% of Stations reporting)

% Stations	Category	% Stations	Category
76-100	Widespread (WS/ Most Places)	26-50	Scattered (SCT/ A Few Places)
51-75	Fairly Widespread (FWS/ Many Places)	1-25	Isolated (ISOL)

### Subdivision Colour

- NO WARNING
- WATCH (BE UPDATED)
- ALERT (BE PREPARED TO TAKE ACTION)
- WARNING (TAKE ACTION)

### Probabilistic Forecast

Terms	Probability of Occurrence (%)
Unlikely	< 25
Likely	25 - 50
Very Likely	50 - 75
Most Likely	> 75

- |                          |                 |                      |                    |
|--------------------------|-----------------|----------------------|--------------------|
| Heavy Rain               | Very Heavy Rain | Extremely Heavy Rain | Heavy Snow         |
| Thunderstorm & Lightning | Hailstorm       | Dust Storm           | Dust Raising Winds |
| Strong surface winds     | Heat Wave       | Hot Day              | Warm Night         |
| Cold Wave                | Cold Day        | Ground Frost         | Fog                |
| Hot & Humid              |                 |                      |                    |

\*Red color warning does not mean "Red Alert" Red color warning means "Take Action"

Forecast and warning for any day is valid from 0830 hours IST of day till 0830 hours IST of next day

For more details kindly visit <https://mausam.imd.gov.in> or contact 011-2434-4599

(Service to the nation since 1875)

## LEGENDS

### WARNING

WARNING (TAKE ACTION)
ALERT ( BE PREPARED)
WATCH (BE UPDATED)
NO WARNING ( NO ACTION)

### Probabilistic Forecast

Terms	Probability of Occurrence (%)
Unlikely	< 25
Likely	25 - 50
Very Likely	50 - 75
Most Likely	> 75



Heavy: 64.5 to 115.5 mm/cm \*  
Very Heavy: 115.6 to 204.4 mm/cm\*  
Extremely Heavy: > 204.4 mm/cm \*



When maximum temperature of a station reaches  $\geq 40^{\circ}\text{C}$  for plains and  $\geq 30^{\circ}\text{C}$  for hilly regions  
(a) Based on Departure from normal

Heat Wave: Maximum Temperature Departure from normal  $4.5^{\circ}\text{C}$  to  $6.4^{\circ}\text{C}$ .  
Severe Heat Wave: Maximum Temperature Departure from normal  $\geq 6.5^{\circ}\text{C}$

(b). Based on Actual maximum temperature

Heat Wave: When actual maximum temperature  $\geq 45^{\circ}\text{C}$ .  
Severe Heat Wave: When actual maximum temperature  $\geq 47^{\circ}\text{C}$

(c). Criteria for heat wave for coastal stations

When maximum temperature departure is  $> 4.5^{\circ}\text{C}$  from normal. Heat Wave may be described provided maximum temperature  $\geq 37^{\circ}\text{C}$



When maximum temperature remains  $40^{\circ}\text{C}$

Warm Night: When minimum temperature departure  $4.5^{\circ}\text{C}$  to  $6.4^{\circ}\text{C}$ .  
Severe Warm Night: When minimum temperature departure  $> 6.4^{\circ}\text{C}$ .



When minimum temperature of a station  $\leq 10^{\circ}\text{C}$  for plains and  $\leq 0^{\circ}\text{C}$  for hilly regions.

(a). Based on departure

Cold Wave: Minimum Temperature Departure from normal  $-4.5^{\circ}\text{C}$  to  $-6.4^{\circ}\text{C}$ .  
Severe Cold Wave: Minimum Temperature Departure from normal  $\leq -6.5^{\circ}\text{C}$

(b) Based on actual Minimum Temperature (for Plains only)

Cold Wave : When Minimum Temperature is  $\leq 4.0^{\circ}\text{C}$   
Severe Cold Wave: When Minimum Temperature is  $\leq 2.0^{\circ}\text{C}$

(c) For Coastal Stations

When Minimum Temperature departure is  $\leq -4.5^{\circ}\text{C}$  & actual Minimum Temperature is  $\leq 15^{\circ}\text{C}$



When minimum temperature of a station  $\leq 10^{\circ}\text{C}$  for plains and  $\leq 0^{\circ}\text{C}$  for hilly regions  
Based on departure

Cold Day: Maximum Temperature Departure from normal  $-4.5^{\circ}\text{C}$  to  $-6.4^{\circ}\text{C}$ .  
Severe Cold Day: Maximum Temperature Departure from normal  $\leq -6.5^{\circ}\text{C}$



Phenomenon of small droplets suspended in air and the horizontal visibility  $< 1\text{km}$

Moderate Fog: When the visibility between 500-200 metres  
Dense Fog: when the visibility between 50- 200 metres  
Very Dense Fog: when the visibility  $< 50$  metres



Sudden electrical discharges manifested by a flash of light (Lightning) and a sharp rumbling sound (thunder)



An ensemble of particles of dust or sand energetically lifted to great heights by a strong and turbulent wind.



Ice deposits on ground

Air temperature  $\leq 4^{\circ}\text{C}$  ( over Plains)



A strong wind that rises suddenly, lasts for atleast 1 minute.

Moderate: Wind speed 52-61 kmph  
Severe: Wind speed 62-87 kmph  
Very Severe: Wind speed  $> 87$  kmph



Effect of various waves in the sea over specific area

Rough to very rough: Wind speed 41-62 kmph (22-33 knots) & Wave height 2.5-6 metre  
High to very high: Wind speed 63-117 kmph ( 34-63 knots) & Wave height 6-14 metre  
Phenomenal: Wind speed  $> 117$  kmph ( $> 63$  knots) & Wave height  $> 14$  metre



Cyclonic Storm: Wind speed 62-87 kmph (34-47 knots)  
Severe Cyclonic Storm: Wind speed 88-117 kmph (48-63 knots)  
Very Severe Cyclonic Storm: Wind speed 118-165 kmph (64 - 89 knots)  
Extremely Severe Cyclonic Storm: Wind speed 166-220 kmph (90 -119 knots)  
Super Cyclone Storm: Wind speed  $> 220$  kmph ( $> 119$  knots)

\*Red color warning does not mean "Red Alert" Red color warning means "Take Action"

Forecast and warning for any day is valid from 0830 hours IST of day till 0830 hours IST of next day

For more details kindly visit <https://mausam.imd.gov.in> or contact 011-2434-4599

(Service to the nation since 1875)