

2026-03-21

Time of Issue: 07:57:00 hours IST
(Morning)

ALL INDIA WEATHER SUMMARY AND FORECAST BULLETIN

Significant Weather Features

Northwest India:

- A fresh wet spell with isolated to scattered light to moderate rainfall/snowfall likely with isolated thunderstorm, lightning & gusty winds speed reaching (40-50 kmph) over Himachal Pradesh on 23rd & 26th & Uttarakhand on 23rd March.
- **Scattered to fairly widespread** light to moderate rainfall accompanied with isolated thunderstorm, lightning & gusty winds speed reaching (30-40 kmph) likely over East Uttar Pradesh on 21st.

Northeast India:

- **Scattered to fairly widespread** light to moderate rainfall with **thunderstorm, lightning gusty winds speed reaching (30-50 kmph)** likely over Manipur, Mizoram & Tripura on 21st March; **Thunderstorm & lightning** likely over Northeast India during next 5 days.
- **Isolated heavy rainfall** likely over Assam & Meghalaya and Arunachal Pradesh on 24th March.

East & Central India:

- **Fairly widespread to widespread** light to moderate rainfall with **thunderstorm, lightning & gusty winds speed reaching (40-50 gusting to 60 kmph)** likely over Sub-Himalayan West Bengal & Sikkim during 21th-24th March. Isolated **heavy rainfall** very likely over Sub-Himalayan West Bengal & Sikkim on 21st March with isolated **very heavy falls** on 21st March.
- **Isolated to Scattered** light to moderate rainfall with **thunderstorm, lightning & gusty winds speed reaching (40-50 gusting to 60 kmph)** likely over Central & East India during next 2-3 days.
- **Thundersquall (wind speed reaching 60-70 kmph gusting to 80 kmph)** very likely at isolated places over Gangetic West Bengal on 21st March.
- **Thundersquall (wind speed reaching 50-60 kmph gusting to 70 kmph)** at isolated places over Odisha on 21st and Sub-Himalayan West Bengal & Sikkim on 21st March.
- Isolated **Hailstorm** activity likely over West Bengal & Sikkim, Odisha on 21st March.

South Peninsular India:

- **Isolated to Scattered** light to moderate rainfall with **thunderstorm, lightning & gusty winds speed reaching (30-50 kmph)** likely over Coastal Andhra Pradesh & Yanam during 21st-22nd, Rayalaseema, Telangana, North Interior Karnataka on 21st, **with lightning** over Tamil Nadu, Puducherry & Karaikal, Kerala & Mahe on 21st and South Interior Karnataka on 21st, 22nd & 24th March.

West India:

- **Isolated** light/moderate rainfall with **thunderstorm & lightning & gusty winds speed reaching (30-50 kmph)** likely over Madhya Maharashtra on 23rd & 24th; Marathwada on 21st, 23rd & 24th March.

Hot & Humid weather Warnings:

- **Hot & humid conditions** very likely to prevail in isolated pockets over Kerala & Mahe during 21st-22nd; Konkan & Goa and Coastal Karnataka on 22nd & 23rd March.

Forecast of maximum/day temperatures:

- Gradual fall in maximum temperatures by 2-3°C likely over Northwest India during next 24 hours and gradual rise by 5-7°C during subsequent 6 days except Uttar Pradesh where maximum temperatures are likely to gradually fall by 6-8°C during next 2 days and gradual rise by 4-6°C during subsequent 5 days.

***Red color warning does not mean "Red Alert" Red color warning means "Take Action"**

Forecast and warning for any day is valid from 0830 hours IST of day till 0830 hours IST of next day

For more details kindly visit <https://mausam.imd.gov.in> or contact 011-2434-4599

(Service to the nation since 1875)



- No significant change in maximum temperatures likely over Central India during next 2 days; gradual rise by 3-5°C during subsequent 5 days.
- Gradual fall in maximum temperatures by 2-3°C likely over East India during next 2 days and gradual rise by 3-5°C during subsequent 5 days.
- Gradual rise in maximum temperatures by 3-5°C likely over Gujarat State during next 4 days and no significant change during subsequent 3 days.
- Gradual rise in maximum temperatures by 2-4°C likely over Maharashtra during next 4 days and no significant change during subsequent 3 days.
- No significant change in maximum temperatures likely over rest parts of the country.

Main Weather Observations:

❖ **Rainfall distribution** (from 0830 hours IST of yesterday to 0530 hours IST of today): **at most places** over Uttarakhand, Sub-himalayan West Bengal & Sikkim, Andaman & Nicobar Islands, Arunachal Pradesh, Jammu & Kashmir and Ladakh, Bihar, Nagaland, Manipur, Mizoram & Tripura, Gangetic West Bengal, Himachal Pradesh, East Uttar Pradesh, Jharkhand, West Uttar Pradesh, Chhattisgarh, East Madhya Pradesh and Assam & Meghalaya; **at many places** over Haryana Chandigarh & Delhi, Vidarbha, East Rajasthan, Tamilnadu Puducherry & Karaikal, Punjab, Odisha and Coastal Andhra Pradesh & Yanam; **Dry** over rest of the country.

❖ **Significant rainfall recorded(in cm)** (from 0830 hours IST of yesterday to 0530 hours IST of today): Sub-himalayan West Bengal & Sikkim: Malda (dist Malda) 7; Jammu & Kashmir And Ladakh: Bhaderwah (dist Doda) 5, Katra (dist Reasi) 1; **Bihar**: Bhagalpur (dist Bhagalpur) 4, Purnea (dist Purnia) 3; **Uttarakhand**: Dehra Dun-mokampur (dist Dehradun) 3; **Nagaland, Manipur, Mizoram & Tripura**: Kailashahar AP (dist Unakoti) 3, Agartala AP (dist West Tripura) 1; **Gangetic West Bengal**: Haldia (dist Purba Medinipur) 3, Kolkata (dum Dum) AP (dist North 24 Parganas), Kolkata-alipur (dist Kolkata), Diamond Harbour (dist South 24 Parganas) 1 Each; **Odisha**: Keonjhar (dist Kendujhar) 3, Jharsuguda (dist Jharsuguda) 2; **Coastal Andhra Pradesh & Yanam**: Kalingapatnam (dist Srikakulam) 2; **Himachal Pradesh**: Sundernagar (dist Mandi) 2; **Punjab**: Amritsar (rajasansi) AP (dist Amritsar) 2; **East Uttar Pradesh**: Bahraich (dist Bahraich), Lucknow (amausi) AP (dist Lucknow) 2 Each; **Jharkhand**: Daltonganj (dist Palamu) 2, Ranchi AP (dist Ranchi) 1; **West Uttar Pradesh**: Jhansi (dist Jhansi) 1; **Chhattisgarh**: Pendra Road (dist Gaurella-pendra-marwahi), Ambikapur (dist Surguja) 1 Each; **East Madhya Pradesh**: Satna (dist Satna) 1; **Assam & Meghalaya**: Cherrapunji, Barapani/shillong (dist East Khasi Hills) 1 Each.

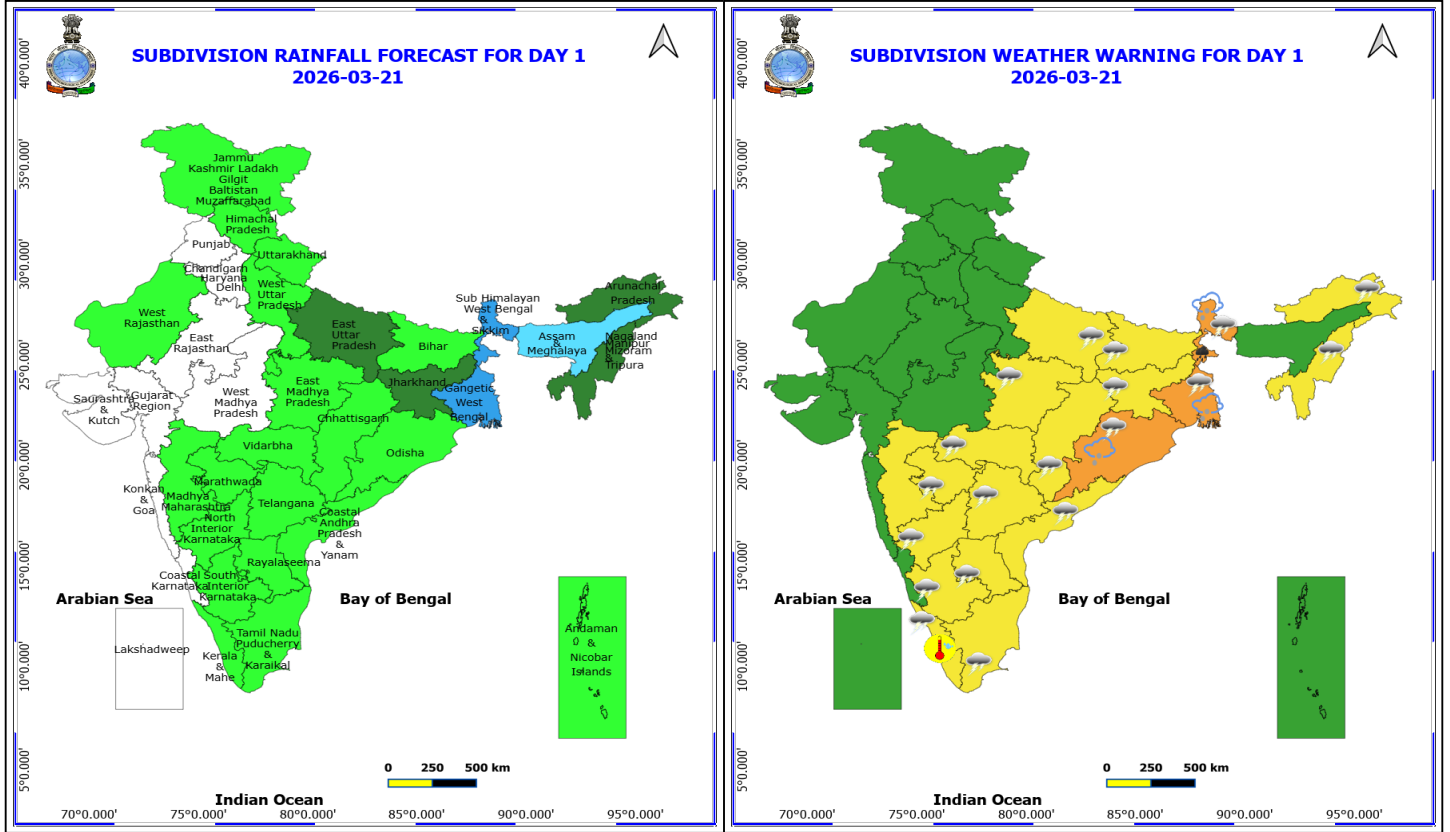
❖ **Heavy Rainfall observed** (from 0830 hours IST of yesterday to 0530 hours IST of today): **Heavy rain** at most places over Sub-himalayan West Bengal & Sikkim

❖ **Minimum Temperature Departures (as on 20-03-2026): markedly above normal(> 5.1°C)** at few places over Bihar; at isolated places over East Uttar Pradesh and East Madhya Pradesh. **appreciably above normal(3.1°C to 5.0°C)** at few places over Bihar; at isolated places over Sub Himalayan West Bengal & Sikkim, Gangetic West Bengal, Odisha, East Uttar Pradesh, West Uttar Pradesh, Uttarakhand, East Madhya Pradesh, Konkan & Goa, Madhya Maharashtra, Marathwada and Coastal Andhra Pradesh & Yanam. **above normal(1.6°C to 3.0°C)** at many places over Jharkhand; at most places over Arunachal Pradesh; at few places over Andaman & Nicobar Islands, Nagaland, Manipur, Mizoram & Tripura, Sub Himalayan West Bengal & Sikkim, Gangetic West Bengal, East Uttar Pradesh and Himachal Pradesh; at isolated places over Assam & Meghalaya, Odisha, Bihar, West Uttar Pradesh, Uttarakhand, Haryana-Chandigarh-Delhi, Punjab, Jammu-KashmirLadakh-Gilgit-Baltistan-Muzaffarabad, West Madhya Pradesh, East Madhya Pradesh and Saurashtra & Kutch. **near normal(-1.5°C to 1.5°C)** at many places over Nagaland, Manipur, Mizoram & Tripura, Odisha, West Uttar Pradesh, Haryana-Chandigarh-Delhi, Jammu-KashmirLadakh-Gilgit-Baltistan-Muzaffarabad, East Rajasthan, Konkan & Goa, Chhattisgarh, Tamil Nadu, Puducherry & Karaikal and Coastal Karnataka; at most places over Assam & Meghalaya, Punjab, Kerala & Mahe and Lakshadweep; at few places over Andaman & Nicobar Islands, Sub Himalayan West Bengal & Sikkim, Gangetic West Bengal, East Uttar Pradesh, Himachal Pradesh, West Rajasthan, West Madhya Pradesh, Gujarat Region, Madhya Maharashtra, Vidarbha, Coastal Andhra Pradesh & Yanam, Telangana, Rayalaseema and South Interior Karnataka; at isolated places over Jharkhand, Uttarakhand, East Madhya Pradesh, Saurashtra & Kutch and North Interior Karnataka. **The lowest minimum temperature of 10.0°C was reported at Gurdaspur (Punjab) over the Plains of India.**

❖ **Maximum Temperature Departures (as on 20-03-2026): markedly above normal(> 5.1°C)** at isolated places over Coastal Andhra Pradesh & Yanam. **above normal(1.6°C to 3.0°C)** at few places over Arunachal Pradesh, Kerala & Mahe and Lakshadweep; at isolated places over Gangetic West Bengal, Jharkhand, Konkan & Goa and Vidarbha. **near normal(-1.5°C to 1.5°C)** at many places over Odisha, Bihar and Tamil Nadu, Puducherry & Karaikal; at most places over Coastal Karnataka; at few places over Andaman & Nicobar Islands, Sub Himalayan West Bengal & Sikkim and South Interior Karnataka; at isolated places over Assam & Meghalaya, Nagaland, Manipur, Mizoram & Tripura, East Uttar Pradesh, Jammu-KashmirLadakh-Gilgit-Baltistan-Muzaffarabad, West Madhya Pradesh, Gujarat Region, Saurashtra & Kutch, Madhya Maharashtra, Chhattisgarh and Telangana. **The highest maximum temperature of 37.6°C was reported at Khargone (West Madhya Pradesh) & PUNALUR (KERALA).**

Meteorological Analysis (Based on 0530 hours IST)

- The **Western Disturbance** now seen as a trough from Punjab to north Chhattisgarh across Haryana, Rajasthan and Madhya Pradesh between 3.1 & 12.6 km above mean sea level.
- The induced **upper air cyclonic circulation** over Haryana at 1.5 km above mean sea level persists.
- The **trough** from **upper air cyclonic circulation** over Haryana to North Gujrat across Rajasthan at 1.5 km above mean sea level persists.
- The **upper air cyclonic circulation** over northwest Madhya Pradesh & adjoining south Uttar Pradesh at 0.9 km above mean sea level persists.
- The **trough** from **upper air cyclonic circulation** over northwest Madhya Pradesh & adjoining south Uttar Pradesh to Vidarbha at 0.9 km above mean sea level persists.
- The **trough** from **cyclonic circulation** over northwest Madhya Pradesh & adjoining south Uttar Pradesh to Nagaland across Jharkhand, north Gangetic West Bengal & South Assam at 0.9 km above mean sea level persists.
- The **upper air cyclonic circulation** over Lakshadweep & neighbourhood at 3.1 km above mean sea level persists.
- The **upper air cyclonic circulation** over Northeast Assam & adjoining Arunachal Pradesh between 1.5 & 3.1 km above mean sea level persists.
- The **upper air cyclonic circulation** over westcentral Bay of Bengal off north Coastal Andhra Pradesh at 3.1 km above mean sea level persists.
- The **upper air cyclonic circulation** over South Interior Karnataka & neighbourhood at 1.5 km above mean sea level persists.
- The **trough** from Gulf of Mannar to North Interior Karnataka across Tamil Nadu and South Interior Karnataka at 0.9 km above mean sea level persists.
- **Subtropical westerly Jet Stream** with core winds of the order of 90 knots at 12.6 km above mean sea level prevails over Central India.
- A fresh feeble **Western Disturbance** is likely to affect northwest India from 22nd March and another active **Western Disturbance** is likely to affect northwest India from 26th March 2026.

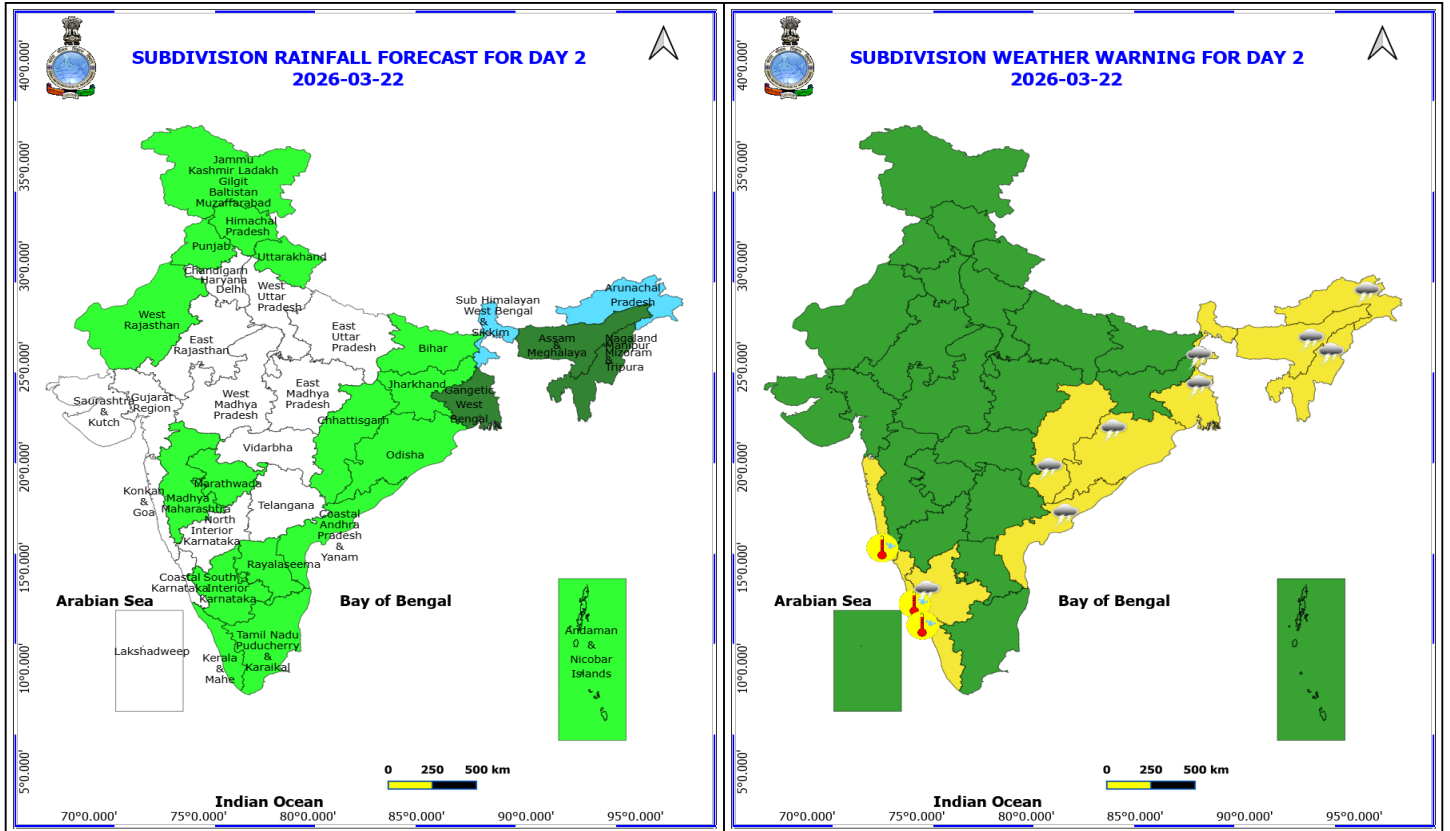


21 March (Day 1)

- ❖ **Heavy to Very Heavy Rainfall** very likely at isolated places over Sub Himalayan West Bengal & Sikkim.
- ❖ **Thunderstorm accompanied with Hailstorm** very likely at isolated places over Odisha and West Bengal & Sikkim.
- ❖ **Thundersquall with wind speed reaching(60-70kmph) gusting to 80 kmph** very likely at isolated places over Gangetic West Bengal.
- ❖ **Thundersquall with wind speed reaching(50-60kmph)** very likely at isolated places over Odisha and Sub Himalayan West Bengal & Sikkim.
- ❖ **Thunderstorm accompanied with lightning & gusty winds(40-50kmph)** very likely at isolated places over Bihar, East Uttar Pradesh, Jharkhand and Nagaland, Manipur, Mizoram and Tripura.
- ❖ **Thunderstorm accompanied with lightning & gusty winds(30-40kmph)** very likely at isolated places over Andhra Pradesh, Chhattisgarh, Marathwada, North Interior Karnataka, Telangana and Vidarbha.
- ❖ **Thunderstorm accompanied with Lightning** very likely at isolated places over Arunachal Pradesh, East Madhya Pradesh, Kerala & Mahe, South Interior Karnataka and Tamil Nadu Puducherry & Karaikal.
- ❖ **Hot and Humid weather** very likely at isolated places over Kerala & Mahe.
- ❖ Squally weather with speed 40–50 kmph gusting to 60 kmph likely to prevail along and off north Odisha & West Bengal coasts.

***Red color warning does not mean "Red Alert" Red color warning means "Take Action"**
Forecast and warning for any day is valid from 0830 hours IST of day till 0830 hours IST of next day
For more details kindly visit <https://mausam.imd.gov.in> or contact 011-2434-4599

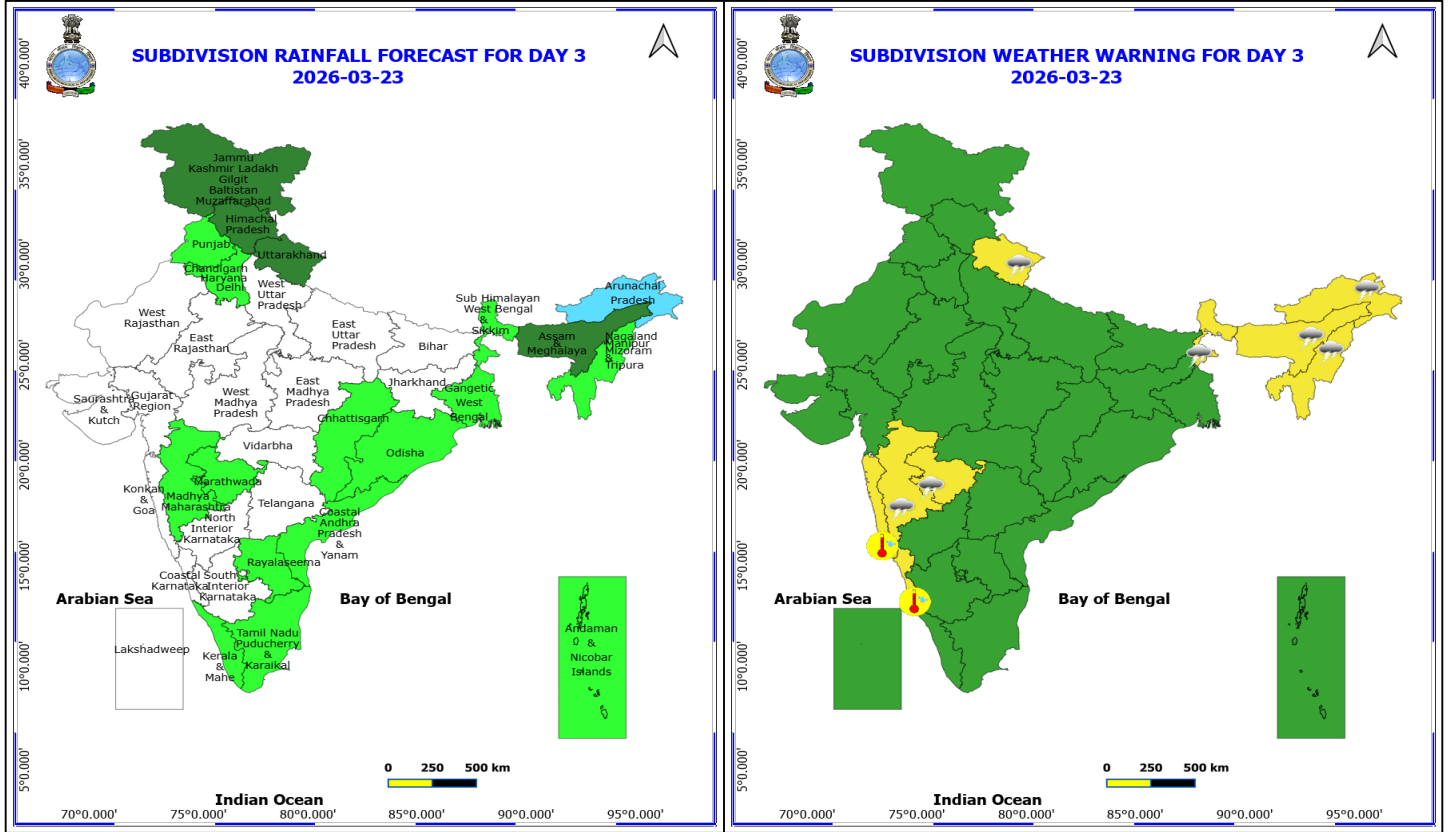
(Service to the nation since 1875)



22 March (Day 2)

- ❖ **Thunderstorm accompanied with lightning & gusty winds(40-50kmph)** very likely at isolated places over Sub Himalayan West Bengal & Sikkim.
- ❖ **Thunderstorm accompanied with lightning & gusty winds(30-40kmph)** very likely at isolated places over Chhattisgarh, Coastal Andhra Pradesh, Gangetic West Bengal and Odisha.
- ❖ **Thunderstorm accompanied with Lightning** very likely at isolated places over Arunachal Pradesh, Assam & Meghalaya, Nagaland, Manipur, Mizoram and Tripura and South Interior Karnataka.
- ❖ **Hot and Humid weather** very likely at isolated places over Coastal Karnataka, Kerala & Mahe and Konkan & Goa.
- ❖ **Squally weather with speed 40–50 kmph gusting to 60 kmph** likely to prevail along and off north Odisha & West Bengal coasts.

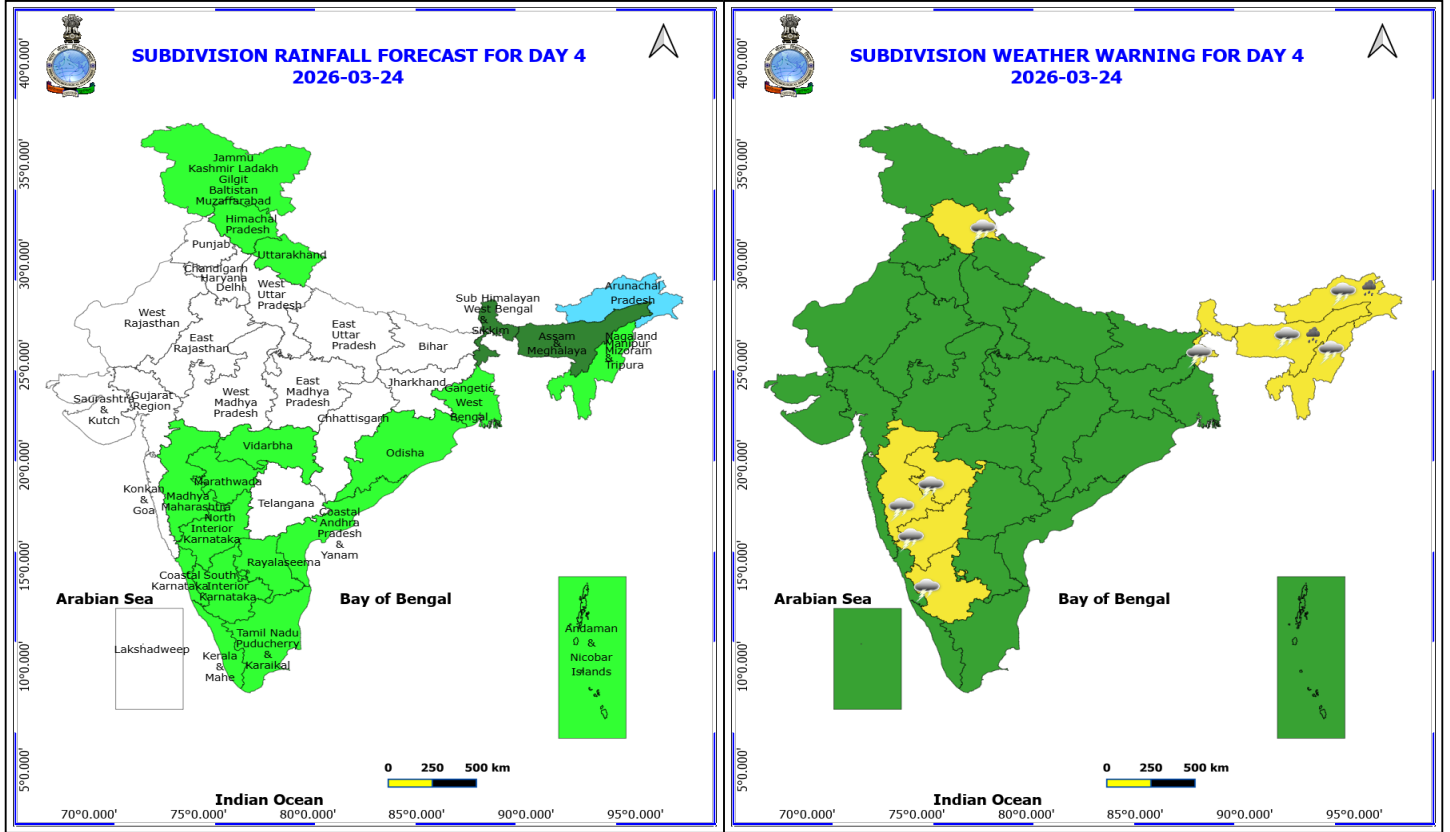
***Red color warning does not mean "Red Alert" Red color warning means "Take Action"**
Forecast and warning for any day is valid from 0830 hours IST of day till 0830 hours IST of next day
For more details kindly visit <https://mausam.imd.gov.in> or contact 011-2434-4599
 (Service to the nation since 1875)



23 March (Day 3)

- ❖ **Thunderstorm accompanied with lightning & gusty winds(40-50kmph)** very likely at isolated places over Uttarakhand.
- ❖ **Thunderstorm accompanied with lightning & gusty winds(30-40kmph)** very likely at isolated places over Madhya Maharashtra, Marathwada and Sub Himalayan West Bengal & Sikkim.
- ❖ **Thunderstorm accompanied with Lightning** very likely at isolated places over Arunachal Pradesh, Assam & Meghalaya and Nagaland, Manipur, Mizoram and Tripura.
- ❖ **Hot and Humid weather** very likely at isolated places over Coastal Karnataka and Konkan & Goa.

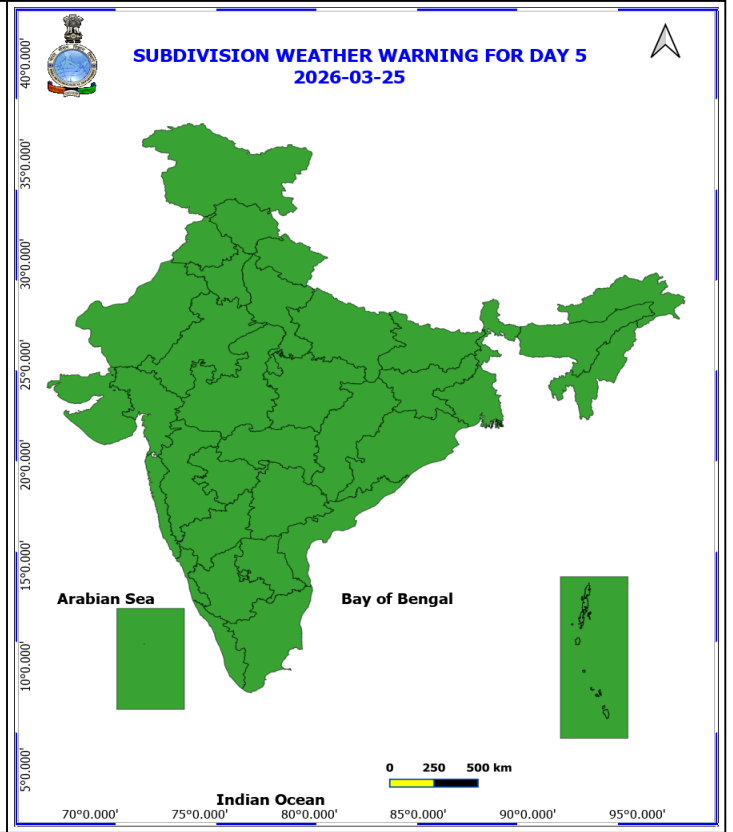
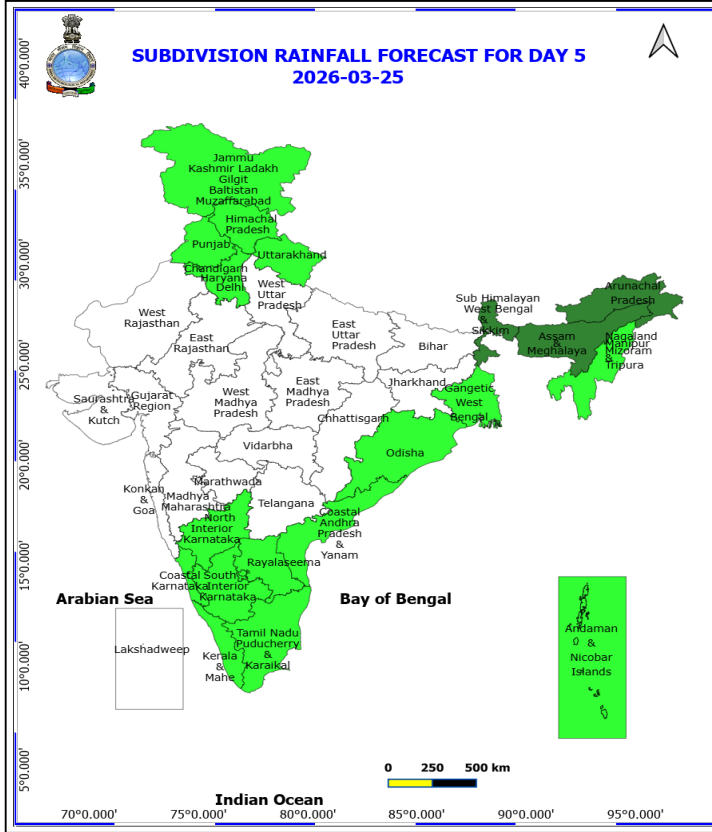
No Fishermen Warning



24 March (Day 4)

- ❖ **Heavy Rainfall** likely at isolated places over Arunachal Pradesh and Assam & Meghalaya.
- ❖ **Thunderstorm accompanied with lightning & gusty winds(30-40kmph)** likely at isolated places over Himachal Pradesh, Madhya Maharashtra, Marathwada, North Interior Karnataka and Sub Himalayan West Bengal & Sikkim.
- ❖ **Thunderstorm accompanied with Lightning** likely at isolated places over Arunachal Pradesh, Assam & Meghalaya, Nagaland, Manipur, Mizoram and Tripura and South Interior Karnataka.

No Fishermen Warning

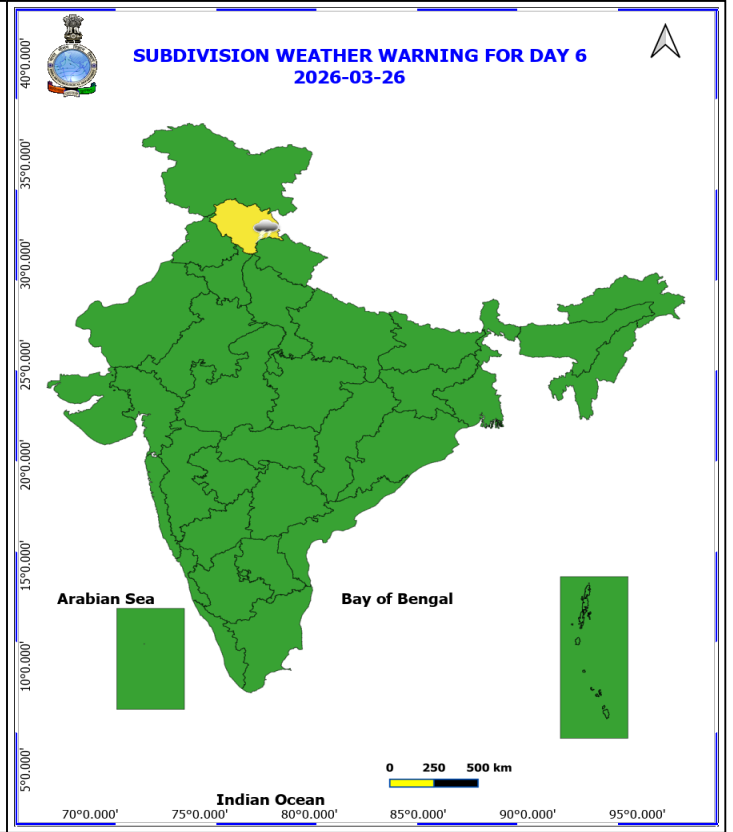
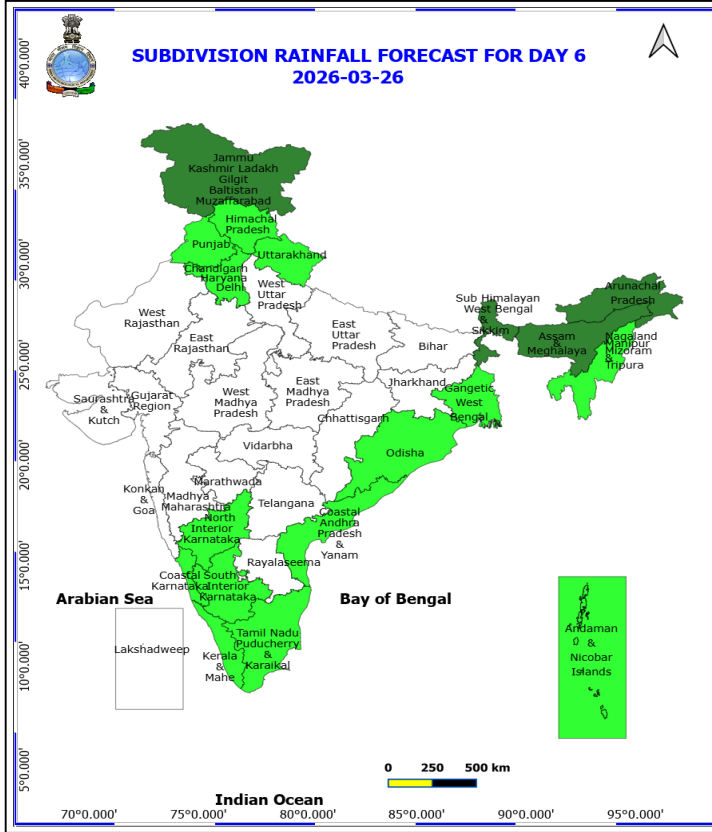


25 March (Day 5)

No Warning

No Fishermen Warning

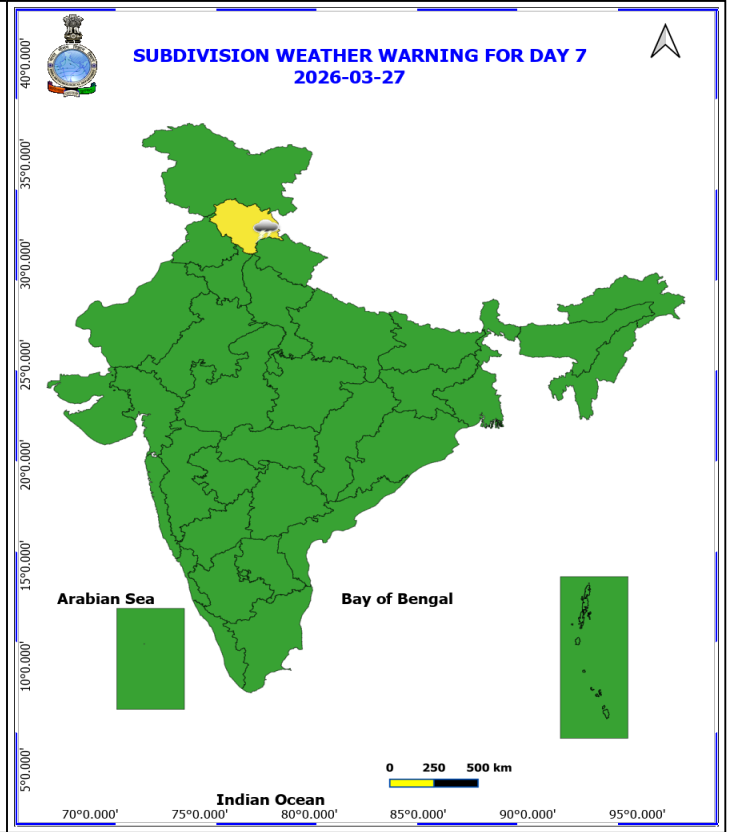
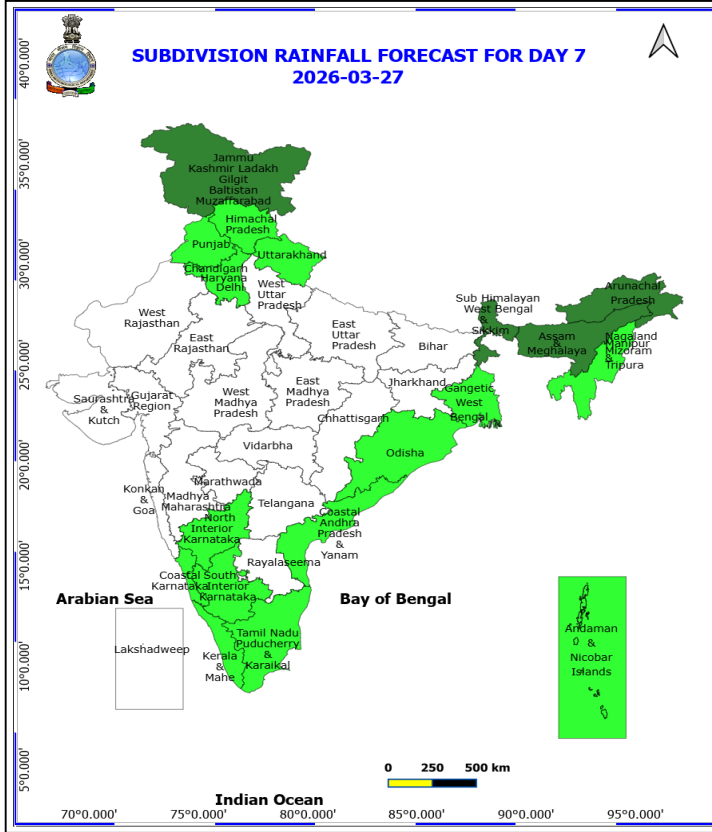
*Red color warning does not mean "Red Alert" Red color warning means "Take Action"
Forecast and warning for any day is valid from 0830 hours IST of day till 0830 hours IST of next day
For more details kindly visit <https://mausam.imd.gov.in> or contact 011-2434-4599
(Service to the nation since 1875)



26 March (Day 6)

❖ **Thunderstorm accompanied with lightning & gusty winds(30-40kmph) likely at isolated places over Himachal Pradesh.**

No Fishermen Warning



27 March (Day 7)

❖ **Thunderstorm accompanied with lightning & gusty winds(30-40kmph) likely at isolated places over Himachal Pradesh.**

No Fishermen Warning



Table-1

7 Days Rainfall Forecast

S.No.	Subdivision	21- Mar	22- Mar	23- Mar	24- Mar	25- Mar	26- Mar	27- Mar
		Day 1	Day 2	Day 3	Day 4	Day 5	Day 6	Day 7
1	ANDAMAN & NICOBAR ISLANDS	ISOL	ISOL	ISOL	ISOL	ISOL	ISOL	ISOL
2	ARUNACHAL PRADESH	SCT	FWS	FWS	FWS	SCT	SCT	SCT
3	ASSAM & MEHGHALAYA	FWS	SCT	SCT	SCT	SCT	SCT	SCT
4	N. M. M. & T.	SCT	SCT	ISOL	ISOL	ISOL	ISOL	ISOL
5	S.H. WEST BENGAL & SIKKIM	WS	FWS	ISOL	SCT	SCT	SCT	SCT
6	GANGETIC WEST BENGAL	WS	SCT	ISOL	ISOL	ISOL	ISOL	ISOL
7	ODISHA	ISOL	ISOL	ISOL	ISOL	ISOL	ISOL	ISOL
8	JHARKHAND	SCT	ISOL	DRY	DRY	DRY	DRY	DRY
9	BIHAR	ISOL	ISOL	DRY	DRY	DRY	DRY	DRY
10	EAST UTTAR PRADESH	SCT	DRY	DRY	DRY	DRY	DRY	DRY
11	WEST UTTAR PRADESH	ISOL	DRY	DRY	DRY	DRY	DRY	DRY
12	UTTARAKHAND	ISOL	ISOL	SCT	ISOL	ISOL	ISOL	ISOL
13	HARYANA, CHD & DELHI	DRY	DRY	ISOL	DRY	ISOL	ISOL	ISOL
14	PUNJAB	DRY	ISOL	ISOL	DRY	ISOL	ISOL	ISOL
15	HIMACHAL PRADESH	ISOL	ISOL	SCT	ISOL	ISOL	ISOL	ISOL
16	JAMMU AND KASHMIR AND LADAKH	ISOL	ISOL	SCT	ISOL	ISOL	SCT	SCT
17	WEST RAJASTHAN	ISOL	ISOL	DRY	DRY	DRY	DRY	DRY
18	EAST RAJASTHAN	DRY	DRY	DRY	DRY	DRY	DRY	DRY
19	WEST MADHYA PRADESH	DRY	DRY	DRY	DRY	DRY	DRY	DRY
20	EAST MADHYA PRADESH	ISOL	DRY	DRY	DRY	DRY	DRY	DRY
21	GUJRAT REGION	DRY	DRY	DRY	DRY	DRY	DRY	DRY
22	SAURASHTRA & KUTCH	DRY	DRY	DRY	DRY	DRY	DRY	DRY
23	KONKAN & GOA	DRY	DRY	DRY	DRY	DRY	DRY	DRY
24	MADHYA MAHARASHTRA	ISOL	ISOL	ISOL	ISOL	DRY	DRY	DRY
25	MARATHWADA	ISOL	ISOL	ISOL	ISOL	DRY	DRY	DRY
26	VIDARBHA	ISOL	DRY	DRY	ISOL	DRY	DRY	DRY
27	CHATTISGARH	ISOL	ISOL	ISOL	DRY	DRY	DRY	DRY
28	COASTAL ANDHRA PRADESH	ISOL	ISOL	ISOL	ISOL	ISOL	ISOL	ISOL
29	TELANGANA	ISOL	DRY	DRY	DRY	DRY	DRY	DRY
30	RAYALASEEMA	ISOL	ISOL	ISOL	ISOL	ISOL	DRY	DRY
31	TAMILNADU & PUDUCHERRY	ISOL	ISOL	ISOL	ISOL	ISOL	ISOL	ISOL
32	COSTAL KARNATAKA	DRY	DRY	DRY	ISOL	ISOL	ISOL	ISOL
33	NORTH INTERIOR KARNATAKA	ISOL	DRY	DRY	ISOL	ISOL	ISOL	ISOL
34	SOUTH INTERIOR KARNATAKA	ISOL	ISOL	DRY	ISOL	ISOL	ISOL	ISOL
35	KERALA	ISOL	ISOL	ISOL	ISOL	ISOL	ISOL	ISOL
36	LAKSHDWEEP	DRY	DRY	DRY	DRY	DRY	DRY	DRY

Legend	Category	%Stations
WS	Widespread/Most Places	76-100
FWS	Fairly Widespread/Many Places	51-75
SCT	Scattered/ A Few Places	26-50
ISOL	Isolated Places	1-25
DRY	No Rain	0

*Red color warning does not mean "Red Alert" Red color warning means "Take Action"
Forecast and warning for any day is valid from 0830 hours IST of day till 0830 hours IST of next day
For more details kindly visit <https://mausam.imd.gov.in> or contact 011-2434-4599

(Service to the nation since 1875)

Fig. 1: Maximum Temperatures Dated 2026-03-20

Fig. 2: Departure of Maximum Temp. Dated 2026-03-20

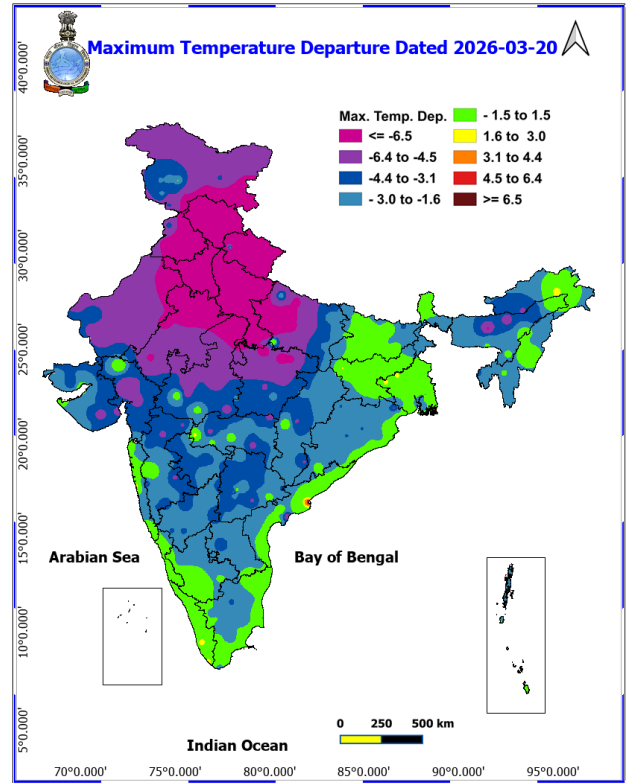
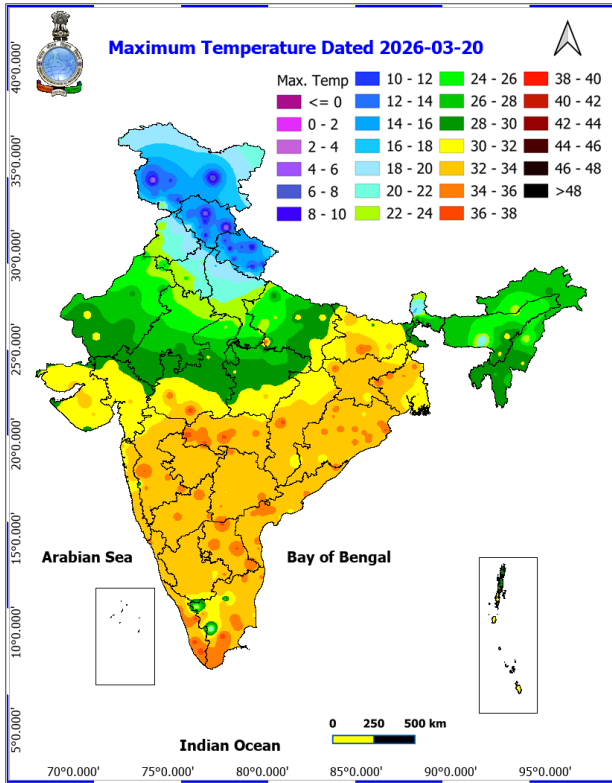
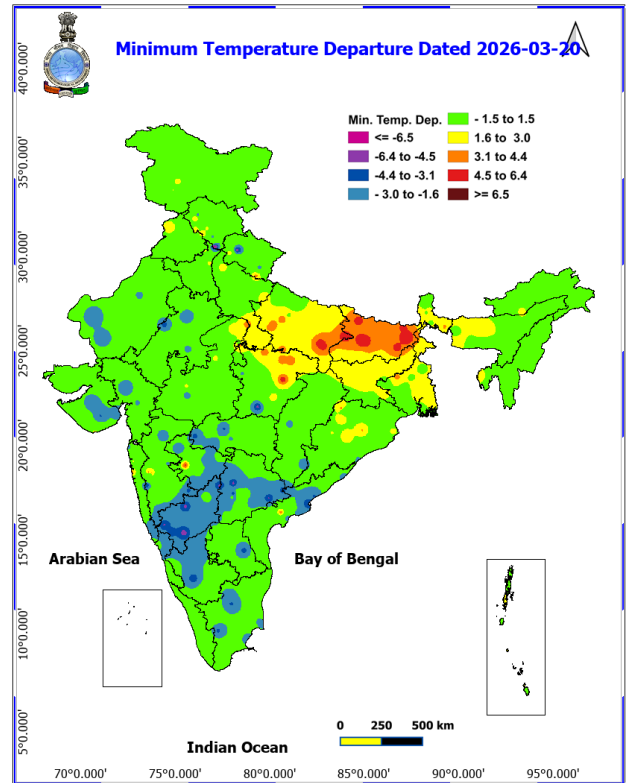
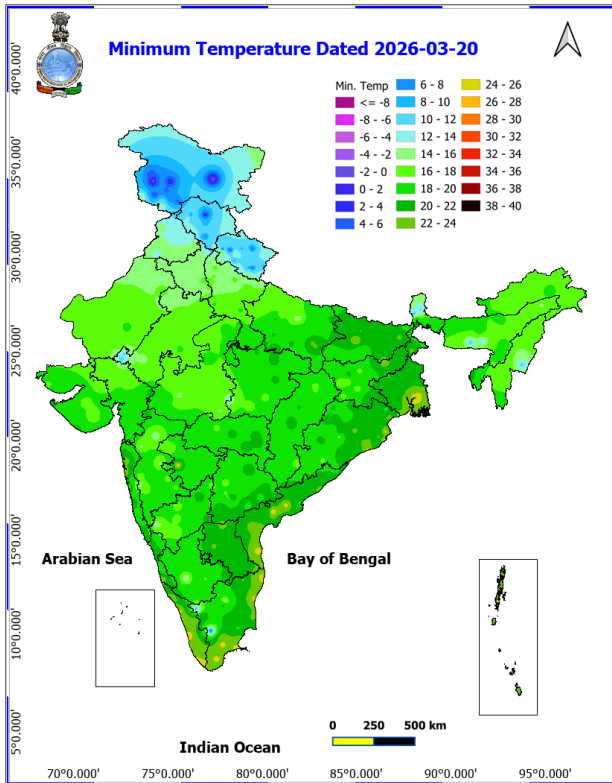


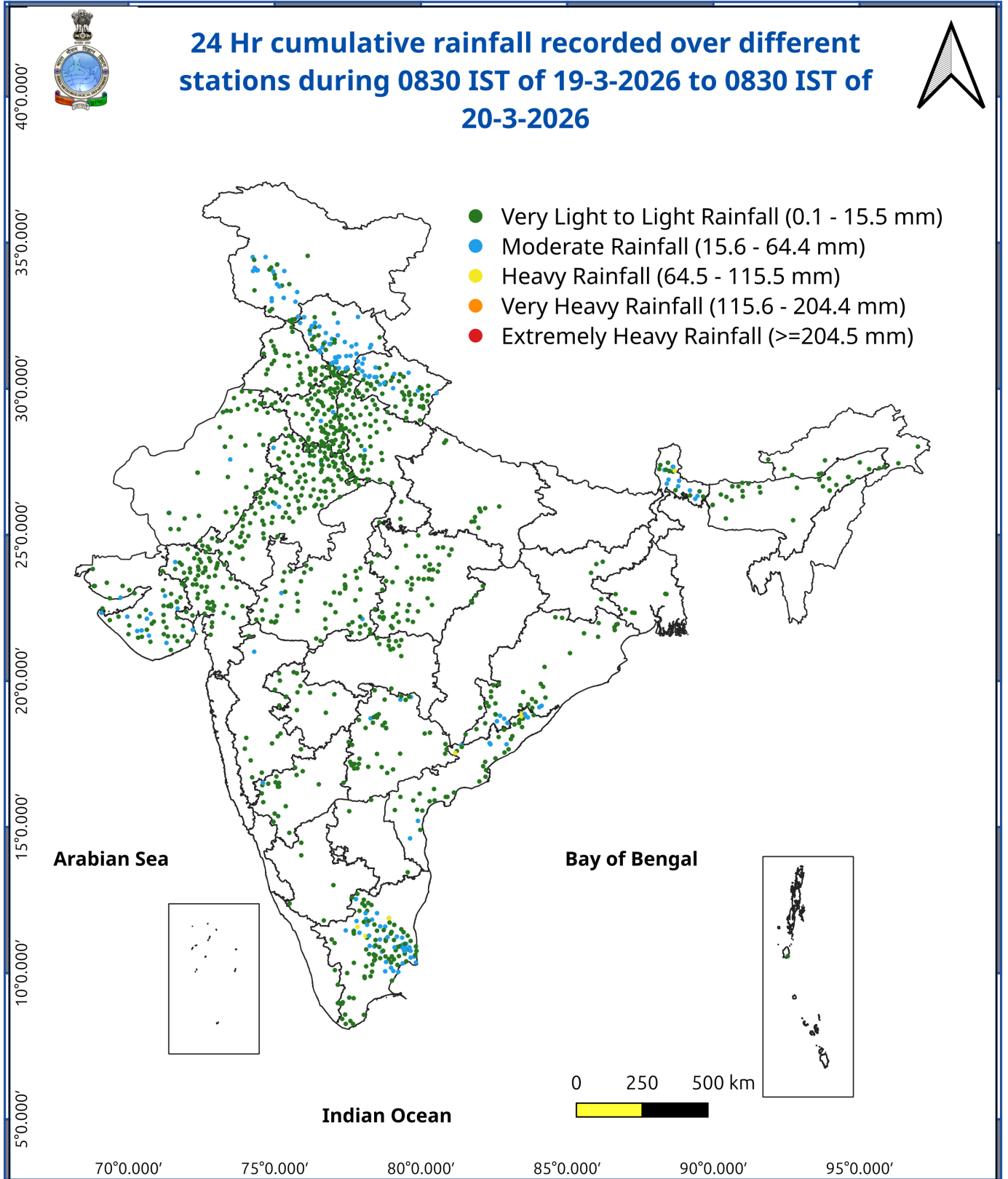
Fig. 3: Minimum Temperatures Dated 2026-03-20

Fig. 4: Departure of Minimum Temp. Dated 2026-03-20



***Red color warning does not mean "Red Alert" Red color warning means "Take Action"**
Forecast and warning for any day is valid from 0830 hours IST of day till 0830 hours IST of next day
For more details kindly visit <https://mausam.imd.gov.in> or contact 011-2434-4599

(Service to the nation since 1875)



Impact and Actions

Impact & Action Suggested due to heavy/very heavy rainfall:

- Heavy rainfall likely over Assam & Meghalaya on 24th; Arunachal Pradesh on 24th March.
- Heavy rainfall likely over Sub-Himalayan West Bengal & Sikkim on 21st March with isolated very heavy falls on 21st March.

Impact Expected

- Localized Flooding of roads, water logging in low lying areas and closure of underpasses mainly in urban areas of the above region.
- Occasional reduction in visibility due to heavy rainfall.
- Disruption of traffic in major cities due to water logging in roads leading to increased travel time.
- Minor damage to kutchra roads.
- Possibilities of damage to vulnerable structure.
- Localized Landslides/Mudslides
- Damage to horticulture and standing crops in some areas due to inundation.
- It may lead to riverine flooding in some river catchments (for riverine flooding please visit Web page of CWC).

Action Suggested

- Check for traffic congestion on your route before leaving for your destination.
- Follow any traffic advisories that are issued in this regard.
- Avoid going to areas that face the water logging problems often.
- Avoid staying in vulnerable structure.

Impact & suggested expected due to isolated thunderstorm with lightning/gusty & Squally winds & Hailstorm over

- Isolated **Hailstorm** activity likely over West Bengal & Sikkim, Odisha on 21st March.
- **Thundersquall (wind speed reaching 60-70 kmph gusting to 80 kmph)** likely at isolated places over Gangetic West Bengal on 21st March.
- **Thundersquall (wind speed reaching 50-60 kmph gusting to 70 kmph)** at isolated places over Odisha on 21st and Sub-Himalayan West Bengal & Sikkim on 21st March.

Impact expected:

- Breaking of tree branches, uprooting of large avenue trees. Large dead limbs blown from trees. Damage to Standing crops.
- Minor to Major damage to banana and papaya trees.
- Minor to major damage to power and communication lines due to breaking of branches.
- Strong wind/hail may damage plantation, horticulture and standing crops.
- Hail may injure people and cattle at open places.
- Partial damage to vulnerable structures due to strong winds.
- Minor damage to kutchra houses/walls and huts.
- Loose objects may fly.

Action suggested:

- People are advised to keep a watch on the weather for worsening conditions and be ready to move to safer places accordingly.
- Stay indoors, close windows & doors and avoid travel if possible.
- Take safe shelters; do not take shelter under trees.

***Red color warning does not mean "Red Alert" Red color warning means "Take Action"**
Forecast and warning for any day is valid from 0830 hours IST of day till 0830 hours IST of next day
For more details kindly visit <https://mausam.imd.gov.in> or contact 011-2434-4599

(Service to the nation since 1875)

- Do not lie on concrete floors and do not lean against concrete walls.
- Unplug electrical/ electronic appliances.
- Immediately get out of water bodies.
- Keep away from all the objects that conduct electricity.

Agromet advisories for various parts of the country

Agromet advisories for likely impact of Hailstorms/ Snowfall

- Use hail nets or hail caps in fruit orchards and vegetable plants to protect them from mechanical damage in **Uttarakhand, Uttar Pradesh, Madhya Pradesh, Chhattisgarh, West Bengal, Odisha, Jharkhand, Bihar, Madhya Maharashtra and Marathwada,**

Agromet advisories for likely impact of Heavy Rainfall

- In **Himachal Pradesh**, ensure proper drainage in the wheat crop and vegetables to avoid water stagnation.
- In **Uttarakhand**, ensure proper drainage in wheat, barley, mustard, lentil crops and vegetables. Keep the harvested produce of matured rapeseed, mustard & vegetable pea in safe place.
- In **Sub Himalayan West Bengal**, drain out excess water from standing crop fields. Cover the nursery of cucurbits and Dalle khorsani with polyethylene sheets or agro-nets. maintain proper drainage channels in the crop fields.

Agromet advisories for likely impact of Thunderstorm / Gusty Winds

- Shift the harvested produce in safer places or cover the produce with tarpaulin sheets in the fields. Tie the harvested crops properly and cover them to minimise the risk of displacement due to strong surface winds.
- Provide mechanical support to horticultural crops and staking or support to vegetables and young fruit plants / fruit-bearing plants to avoid lodging due to strong winds.

Livestock / Poultry

- Keep the animals inside the shed during Heavy Rainfall/Hailstorm period and provide them balanced feed. Store feed and fodder in a safe place to prevent spoilage.
- Provide clean, hygienic and plenty of drinking water to animals.

Legends & abbreviations:

- **Heavy Rain:**64.5-115.5mm; **Very Heavy Rain:**115.6-204.4mm; **Extremely Heavy Rain:** >204.4mm.
- **Obsy:** Observatory; Automatic Weather Station; **ARG:** Automatic Rain Gauge; **dist:** District; **NH:** National Highway; **KVK:** Krishi Vigyan Kendra; **DVC:** Damodar Valley Corporation; **PTO:** Part Time Office, **Aero:** Aerodrome, **IAF:** Indian Air Force.
- **Region wise classification of meteorological Sub-Divisions:**
- **Northwest India:** Western Himalayan Region (Jammu-Kashmir-Ladakh-Gilgit-Baltistan-Muzaffarabad, Himachal Pradesh and Uttarakhand); Punjab, Haryana-Chandigarh-Delhi; West Uttar Pradesh, East Uttar Pradesh, West Rajasthan and East Rajasthan.
- **Central India:** West Madhya Pradesh, East Madhya Pradesh, Vidarbha and Chhattisgarh.

*Red color warning does not mean "Red Alert" Red color warning means "Take Action"

Forecast and warning for any day is valid from 0830 hours IST of day till 0830 hours IST of next day

For more details kindly visit <https://mausam.imd.gov.in> or contact 011-2434-4599

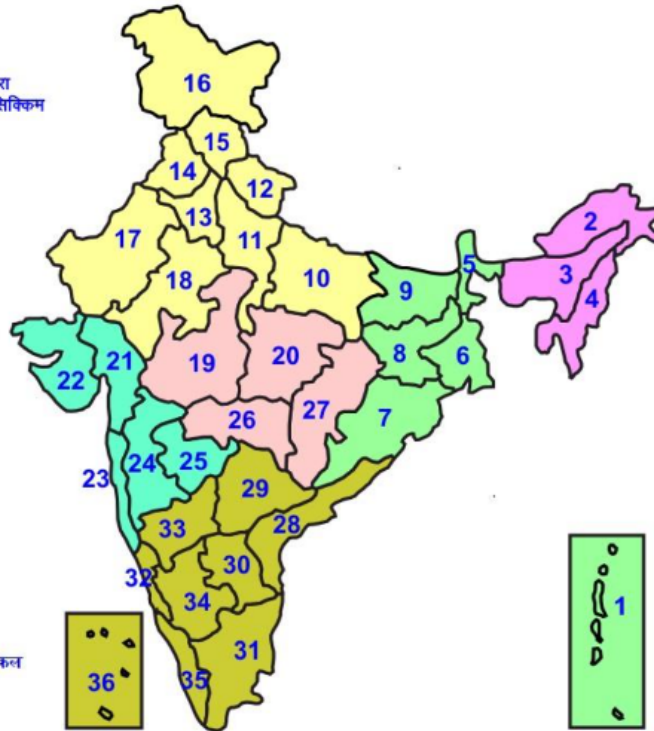
(Service to the nation since 1875)



- **East India:** Bihar, Jharkhand, Sub-Himalayan West Bengal & Sikkim; Gangetic West Bengal, Odisha and Andaman & Nicobar Islands.
- **Northeast India:** Arunachal Pradesh, Assam & Meghalaya and Nagaland, Manipur, Mizoram & Tripura.
- **West India:** Gujarat Region, Saurashtra & Kutch, Konkan & Goa, Madhya Maharashtra and Marathawada.
- **South India:** Coastal Andhra Pradesh & Yanam, Telangana, Rayalaseema, Coastal Karnataka, North Interior Karnataka, South Interior Karnataka, Kerala & Mahe, Tamil Nadu, Puducherry & Karaikal and Lakshadweep.

LEGENDS

- 1 अंडमान और निकोबार द्वीप समुह
- 2 अरुणाचल प्रदेश
- 3 असम और मेघालय
- 4 नागालैंड मनीपुर मीजोरम और त्रिपुरा
- 5 उप हिमालय पश्चिम बंगाल एवं सिक्किम
- 6 पश्चिम बंगाल
- 7 ओडिसा
- 8 झारखंड
- 9 बिहार
- 10 पूर्वी उत्तर प्रदेश
- 11 पश्चिम उत्तर प्रदेश
- 12 उत्तराखंड
- 13 हरियाणा चंडिगढ़ एवं दिल्ली
- 14 पंजाब
- 15 हिमाचल प्रदेश
- 16 जम्मू एवं कश्मीर एवं लद्दाख
- 17 पश्चिम राजस्थान
- 18 पूर्वी राजस्थान
- 19 पश्चिम मध्य प्रदेश
- 20 पूर्वी मध्य प्रदेश
- 21 गुजरात क्षेत्र
- 22 सौराष्ट्र एवं कच्छ
- 23 कोंकण एवं गोवा
- 24 मध्य महाराष्ट्र
- 25 मराठावाडा
- 26 विदर्भ
- 27 छत्तीसगढ़
- 28 तटीय आंध्र प्रदेश एवं यनम
- 29 तेलंगाना
- 30 रायलसीमा
- 31 तमिलनाडु, पुदुचेरी एवं कराईकल
- 32 तटिय कर्नाटक
- 33 आंतरिक उत्तरी कर्नाटक
- 34 आंतरिक दक्षिणी कर्नाटक
- 35 केरल एवं माहे
- 36 लक्षद्वीप



1. Andaman & Nicobar Islands
2. Arunachal Pradesh
3. Assam & Meghalaya
4. Nagaland, Manipur, Mizoram & Tripura
5. Sub-Himalayan West Bengal & Sikkim
6. Gangetic West Bengal
7. Orissa
8. Jharkhand
9. Bihar
10. East Uttar Pradesh
11. West Uttar Pradesh
12. Uttarakhand
13. Haryana, Chd & Delhi
14. Punjab
15. Himachal Pradesh
16. Jammu & Kashmir and Ladakh
17. West Rajasthan
18. East Rajasthan
19. West Madhya Pradesh
20. East Madhya Pradesh
21. Gujarat
22. Saurashtra
23. Konkan & Goa
24. Madhya Maharashtra
25. Marathawada
26. Vidharbha
27. Chhattisgarh
28. Coastal Andhra Pradesh & Yanam
29. Telangana
30. Rayalaseema
31. Tamilnadu, Puducherry & Karaikal
32. Coastal Karnataka
33. North Interior Karnataka
34. South Interior Karnataka
35. Kerala & Mahe
36. Lakshadweep

SPATIAL DISTRIBUTION (% of Stations reporting)

% Stations	Category	% Stations	Category
76-100	Widespread (WS/ Most Places)	26-50	Scattered (SCT/ A Few Places)
51-75	Fairly Widespread (FWS/ Many Places)	1-25	Isolated (ISOL)

Subdivision Colour

- NO WARNING
- WATCH (BE UPDATED)
- ALERT (BE PREPARED TO TAKE ACTION)
- WARNING (TAKE ACTION)

Probabilistic Forecast

Terms	Probability of Occurrence (%)
Unlikely	< 25
Likely	25 - 50
Very Likely	50 - 75
Most Likely	> 75

- | | | | |
|--------------------------|-----------------|----------------------|--------------------|
| Heavy Rain | Very Heavy Rain | Extremely Heavy Rain | Heavy Snow |
| Thunderstorm & Lightning | Hailstorm | Dust Storm | Dust Raising Winds |
| Strong surface winds | Heat Wave | Hot Day | Warm Night |
| Cold Wave | Cold Day | Ground Frost | Fog |
| Hot & Humid | | | |

*Red color warning does not mean "Red Alert" Red color warning means "Take Action"

Forecast and warning for any day is valid from 0830 hours IST of day till 0830 hours IST of next day

For more details kindly visit <https://mausam.imd.gov.in> or contact 011-2434-4599

(Service to the nation since 1875)

LEGENDS

WARNING

WARNING (TAKE ACTION)
ALERT (BE PREPARED)
WATCH (BE UPDATED)
NO WARNING (NO ACTION)

Probabilistic Forecast

Terms	Probability of Occurrence (%)
Unlikely	< 25
Likely	25 - 50
Very Likely	50 - 75
Most Likely	> 75



Heavy: 64.5 to 115.5 mm/cm *
Very Heavy: 115.6 to 204.4 mm/cm*
Extremely Heavy: > 204.4 mm/cm *



When maximum temperature of a station reaches $\geq 40^{\circ}\text{C}$ for plains and $\geq 30^{\circ}\text{C}$ for hilly regions
(a) Based on Departure from normal

Heat Wave: Maximum Temperature Departure from normal 4.5°C to 6.4°C .
Severe Heat Wave: Maximum Temperature Departure from normal $\geq 6.5^{\circ}\text{C}$

(b). Based on Actual maximum temperature

Heat Wave: When actual maximum temperature $\geq 45^{\circ}\text{C}$.
Severe Heat Wave: When actual maximum temperature $\geq 47^{\circ}\text{C}$

(c). Criteria for heat wave for coastal stations

When maximum temperature departure is $> 4.5^{\circ}\text{C}$ from normal. Heat Wave may be described provided maximum temperature $\geq 37^{\circ}\text{C}$



When maximum temperature remains 40°C

Warm Night: When minimum temperature departure 4.5°C to 6.4°C .
Severe Warm Night: When minimum temperature departure $> 6.4^{\circ}\text{C}$.



When minimum temperature of a station $\leq 10^{\circ}\text{C}$ for plains and $\leq 0^{\circ}\text{C}$ for hilly regions.

(a). Based on departure

Cold Wave: Minimum Temperature Departure from normal -4.5°C to -6.4°C .
Severe Cold Wave: Minimum Temperature Departure from normal $\leq -6.5^{\circ}\text{C}$

(b) Based on actual Minimum Temperature (for Plains only)

Cold Wave : When Minimum Temperature is $\leq 4.0^{\circ}\text{C}$
Severe Cold Wave: When Minimum Temperature is $\leq 2.0^{\circ}\text{C}$

(c) For Coastal Stations

When Minimum Temperature departure is $\leq -4.5^{\circ}\text{C}$ & actual Minimum Temperature is $\leq 15^{\circ}\text{C}$



When minimum temperature of a station $\leq 10^{\circ}\text{C}$ for plains and $\leq 0^{\circ}\text{C}$ for hilly regions
Based on departure

Cold Day: Maximum Temperature Departure from normal -4.5°C to -6.4°C .
Severe Cold Day: Maximum Temperature Departure from normal $\leq -6.5^{\circ}\text{C}$



Phenomenon of small droplets suspended in air and the horizontal visibility $< 1\text{km}$

Moderate Fog: When the visibility between 500-200 metres
Dense Fog: when the visibility between 50- 200 metres
Very Dense Fog: when the visibility < 50 metres



Sudden electrical discharges manifested by a flash of light (Lightning) and a sharp rumbling sound (thunder)



An ensemble of particles of dust or sand energetically lifted to great heights by a strong and turbulent wind.



Ice deposits on ground

Air temperature $\leq 4^{\circ}\text{C}$ (over Plains)



A strong wind that rises suddenly, lasts for atleast 1 minute.

Moderate: Wind speed 52-61 kmph
Severe: Wind speed 62-87 kmph
Very Severe: Wind speed > 87 kmph



Effect of various waves in the sea over specific area

Rough to very rough: Wind speed 41-62 kmph (22-33 knots) & Wave height 2.5-6 metre
High to very high: Wind speed 63-117 kmph (34-63 knots) & Wave height 6-14 metre
Phenomenal: Wind speed > 117 kmph (> 63 knots) & Wave height > 14 metre



Cyclonic Storm: Wind speed 62-87 kmph (34-47 knots)
Severe Cyclonic Storm: Wind speed 88-117 kmph (48-63 knots)
Very Severe Cyclonic Storm: Wind speed 118-165 kmph (64 - 89 knots)
Extremely Severe Cyclonic Storm: Wind speed 166-220 kmph (90 -119 knots)
Super Cyclone Storm: Wind speed > 220 kmph (> 119 knots)

*Red color warning does not mean "Red Alert" Red color warning means "Take Action"

Forecast and warning for any day is valid from 0830 hours IST of day till 0830 hours IST of next day

For more details kindly visit <https://mausam.imd.gov.in> or contact 011-2434-4599

(Service to the nation since 1875)