

2025-07-08

Time of Issue: 08:45:00 hours IST
(Morning)

ALL INDIA WEATHER SUMMARY AND FORECAST BULLETIN

Significant Weather Features

Weather Forecast and Warnings:

East & Central India:

- ♦ Isolated **heavy rainfall** very likely to continue over Madhya Pradesh during 08th-13th; Vidarbha, Chhattisgarh during 08th-10th; Gangetic West Bengal, Jharkhand, Odisha on 08th and Sub-Himalayan West Bengal & Sikkim on 09th, 12th & 13th July with **very heavy rainfall** over Madhya Pradesh during 08th-10th; Odisha on 08th; Vidarbha on 08th & 09th; Chhattisgarh on 08th July.

Northwest India:

- ♦ Isolated **heavy rainfall** likely over Uttarakhand, East Rajasthan during 08th-13th, Jammu-Kashmir, Himachal Pradesh, Punjab, Haryana Chandigarh, West Uttar Pradesh during 08th-10th, West Rajasthan on 08th & 09th; East Uttar Pradesh during 08th-10th July with **very heavy rainfall over Uttarakhand, East Rajasthan during 08th-10th; Punjab, Haryana, Chandigarh on 08th July.**

West India:

- ♦ **Heavy to very heavy rainfall** likely at isolated places over Konkan & Goa, Ghat areas of Madhya Maharashtra, during next 7 days and **heavy rainfall** over Gujarat Region, Marathawada on 08th & 09th; Saurashtra & Kutch on 12th & 13th July.

Northeast India:

- ♦ Isolated heavy rainfall very likely over Assam & Meghalaya, Nagaland, Manipur, Mizoram & Tripura during 08th-13th; Arunachal Pradesh during 11th-13th July.

South Peninsular India:

- ♦ Isolated **heavy rainfall** likely over Coastal Karnataka, Kerala & Mahe during 08th-13th and isolated **heavy to very heavy rainfall** over Telangana on 08th & 09th July.
- ♦ **Strong surface winds** (speed reaching 40-50 kmph) very likely over South Peninsular India during next 5 days.

Hot & Humid Weather warning:

- ♦ **Hot & humid weather** is likely to prevail over Tamil Nadu, Puducherry & Karaikal on 08th & 09th July.

Main Weather Observations:

❖ **Rainfall distribution** (from 0830 hours IST to 1730 hours IST of yesterday): At most places over East Madhya Pradesh, Vidarbha, Gangetic West Bengal, Konkan & Goa, Kerala & Mahe, Coastal Karnataka; at many places over West Uttar Pradesh, West Madhya Pradesh, Odisha, Chhattisgarh, Gujarat state, Madhya Maharashtra, North Interior Karnataka; at a few places over Jammu-Kashmir-Ladakh-Gilgit-Baltistan-Muzaffarabad, Haryana-Chandigarh-Delhi, Jharkhand, Sub-Himalayan West Bengal & Sikkim, Assam & Meghalaya, Nagaland, Manipur, Mizoram & Tripura, Marathwada, Telangana; at isolated places over Himachal Pradesh, Uttarakhand, Punjab, Rayalaseema, East Uttar Pradesh, Bihar, Coastal Andhra Pradesh & Yanam, South Interior Karnataka, Lakshadweep, Andaman & Nicobar Islands.

❖ **Significant rainfall recorded(in cm)** (from 0830 hours IST to 1730 hours IST of yesterday): East Madhya Pradesh: Seoni (dist Seoni) 7; **Punjab**: Amritsar (rajasansi) AP (dist Amritsar) 6; **Chhattisgarh**: Bilaspur (dist Bilaspur) 6, Raipur-mana (dist Raipur) 5; Gujarat: Anand 9, Panchmahal 7, New Kandla (dist Kachchh) 5, Dwarka, Bhavnagar, Kutch 4; **Vidarbha**: Nagpur-sonegaon Airport (dist Nagpur) 5; Madhya maharashtra : Mahabaleshwar (dist Satara) 4; Jammu & Kashmir and Ladakh: Katra (dist Reasi) 4; **Uttarakhand**: Pantnagar (dist Udham Singh Nagar) 4.

❖ **Heavy Rainfall observed** (from 0830 hours IST to 1730 hours IST of yesterday): **Heavy rain** at isolated places over East Madhya Pradesh, Gujarat State.

❖ **Minimum Temperature Departures (as on 07-07-2025): markedly above normal(> 5.1°C)** at few places over Assam & Meghalaya; at isolated places over Bihar, West Uttar Pradesh, Himachal Pradesh, Jammu-Kashmir-Ladakh-Gilgit-Baltistan-Muzaffarabad, West Madhya Pradesh, East Madhya Pradesh and Saurashtra & Kutch. **appreciably above normal(3.1°C to 5.0°C)** at isolated places over Andaman & Nicobar Islands, Sub Himalayan West Bengal & Sikkim, East Uttar Pradesh, West Rajasthan, Gujarat Region and Coastal Andhra Pradesh & Yanam. **above normal(1.6°C to 3.0°C)** at most places over Coastal Karnataka; at few places over Punjab, Rayalaseema and Tamil Nadu, Puducherry & Karaikal; at isolated places over Nagaland, Manipur, Mizoram & Tripura, Gangetic West Bengal, Odisha, Uttarakhand and Haryana-Chandigarh-Delhi. **near normal(-1.5°C to 1.5°C)** at many places over Jharkhand, East Rajasthan, Chhattisgarh, Telangana and Kerala & Mahe; at most places over Arunachal Pradesh, Konkan & Goa, Madhya Maharashtra, Marathwada, Vidarbha, North Interior Karnataka, South Interior Karnataka and Lakshadweep. **The lowest minimum temperature** of 17.7°C was reported at UNA (HIMACHAL PRADESH) over the Plains of India.

❖ **Maximum Temperature Departures (as on 07-07-2025): markedly above normal(> 5.1°C)** at few places over Arunachal Pradesh. **appreciably above normal(3.1°C to 5.0°C)** at few places over Assam & Meghalaya, Sub Himalayan West Bengal & Sikkim and Jammu-Kashmir-Ladakh-Gilgit-Baltistan-Muzaffarabad; at isolated places over Odisha, Bihar, Himachal Pradesh and Tamil Nadu, Puducherry & Karaikal. **above normal(1.6°C to 3.0°C)** at few places over East Uttar Pradesh, Kerala & Mahe and Lakshadweep; at isolated places over Andaman & Nicobar Islands, Uttarakhand, Haryana-Chandigarh-Delhi, Punjab, Konkan & Goa, Coastal Andhra Pradesh & Yanam and Rayalaseema. **near normal(-1.5°C to 1.5°C)** at many places over Nagaland, Manipur, Mizoram & Tripura, West Uttar Pradesh, Madhya Maharashtra and North Interior Karnataka; at most places over Marathwada, Coastal Karnataka and South Interior Karnataka; at few places over West Rajasthan, East Madhya Pradesh, Saurashtra & Kutch and Telangana; at isolated places over Gangetic West Bengal and Chhattisgarh. **The highest maximum temperature** of 39.9°C was reported at SRIGANGANAGAR (RAJASTHAN).

Meteorological Analysis (Based on 0530 hours IST)

- ❖ The **Low-Pressure area** over southwest Gangetic West Bengal & neighbourhood lay over Gangetic West Bengal & neighbourhood at 0530 hrs IST of today, the 08th July 2025. The associated cyclonic circulation extended upto 7.6 km above mean sea level. It is likely to move slowly west-northwestwards across Jharkhand and north Chhattisgarh during next 2 days.
- ❖ The **monsoon trough** at mean sea level now passes through Sri Ganganagar, Delhi, Lucknow, Prayagraj, Jamshedpur, centre of the **Low-Pressure area** over Gangetic West Bengal & neighbourhood and thence east southeastwards to northeast Bay of Bengal.
- ❖ The core of **Tropical Easterly Jet (70-75 knots)** lies at 100 hPa and significantly shift to the north passing across central Andhra Pradesh, Telangana and central parts of Maharashtra. It is likely to support **Low-Pressure area** and associated east-west trough over the region by providing upper-level divergence and hence increase in rainfall activity over Chhattisgarh, Madhya Pradesh, Telangana and Maharashtra.
- ❖ The **trough** now runs from northeast Arabian Sea to the centre of **Low-Pressure area** over Gangetic West Bengal & neighbourhood across south Gujarat Region, north Maharashtra, central parts of Chhattisgarh, north Odisha between 3.1 km & 7.6 km above mean sea level.
- ❖ The **off-shore trough** at mean sea level lay off South Gujarat to Goa coasts.

Weather Outlook for subsequent 3 days

- ♦ Fairly widespread to widespread rainfall very likely over Central India, along west Coast, Islands, East India, Northeast India & Northwest India.
- ♦ Scattered rainfall very likely over rest parts of the country.

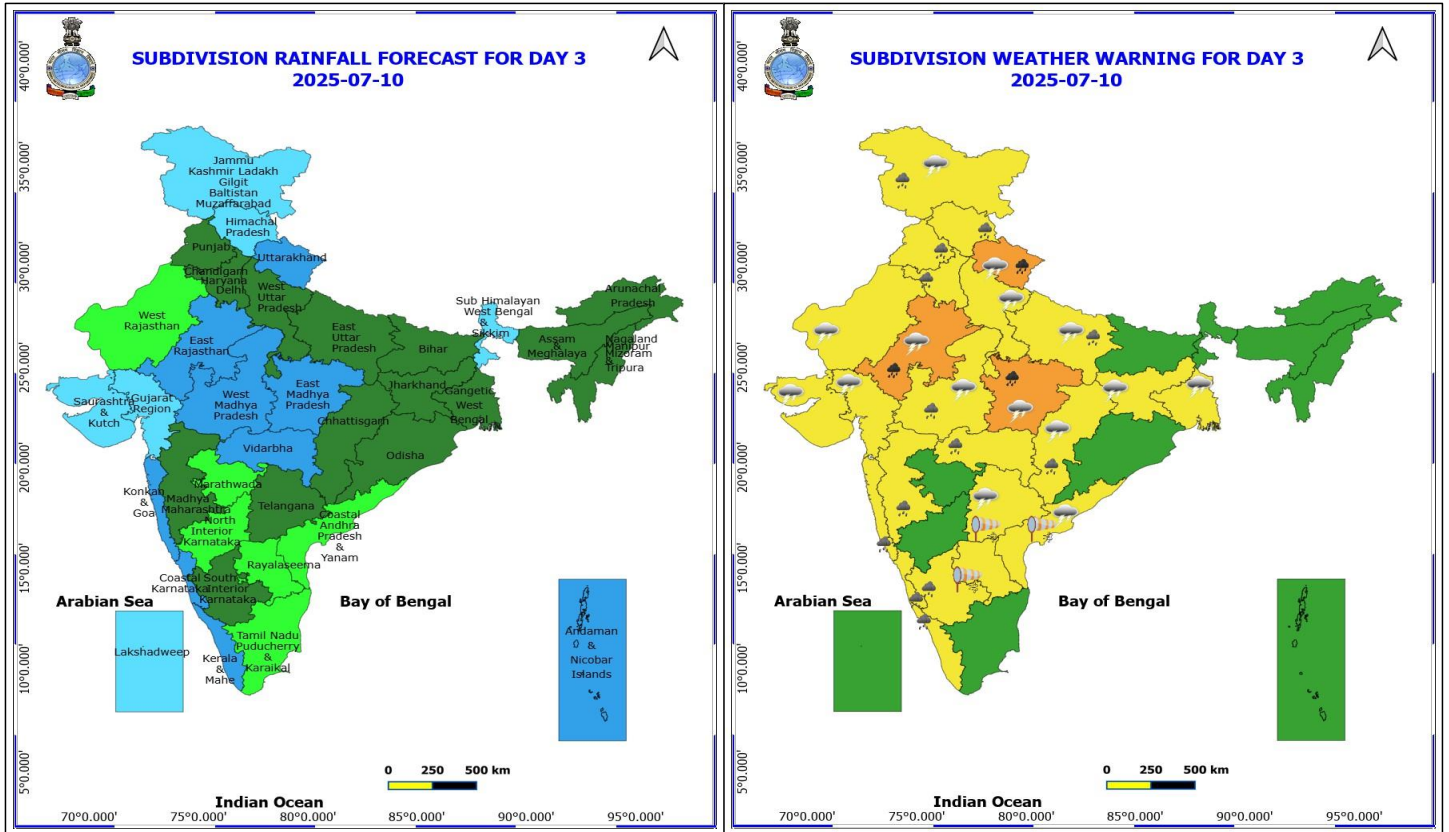


eastcentral Arabian Sea, northern parts of southwest Arabian Sea, Gulf of Mannar.

- Squally weather with wind speed 40 - 50 kmph gusting to 60 kmph likely to prevail along and off Gujarat, Konkan, Goa, Karnataka coasts and adjoining sea areas, over southern parts of northeast Arabian Sea, over most parts of westcentral Bay of Bengal & adjoining few parts of eastcentral Bay of Bengal, Bangladesh coasts, over most parts of north Bay of Bengal, along and off north Andhra Pradesh, Odisha, West Bengal coasts.



Sea, along and off north Andhra Pradesh, Odisha, West Bengal, Bangladesh coasts, off south Andhra Pradesh coast, over most parts of north Bay of Bengal, many parts of westcentral Bay of Bengal, some northern parts of southwest Bay of Bengal.



10 July (Day 3)

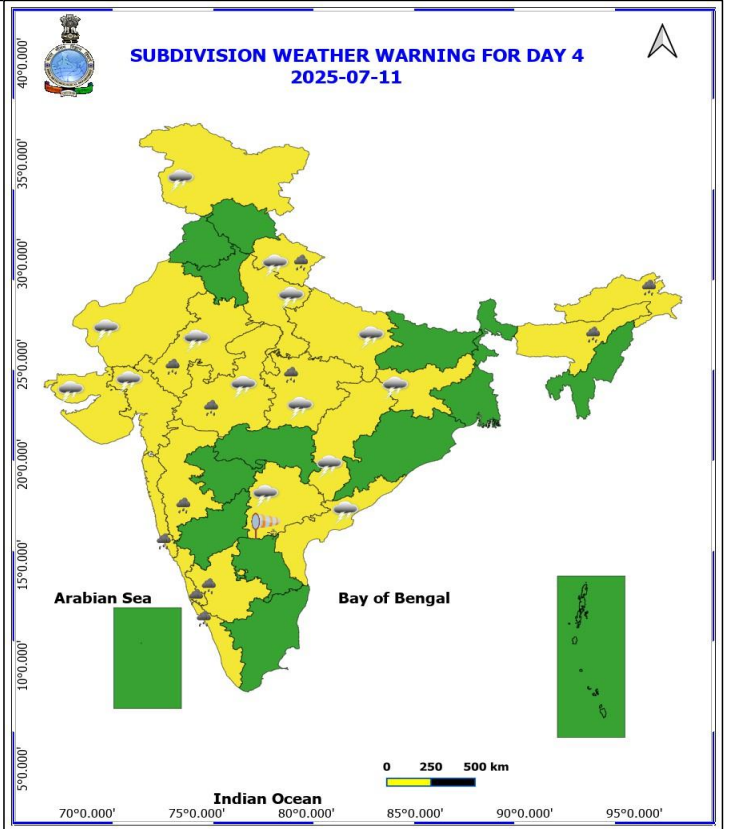
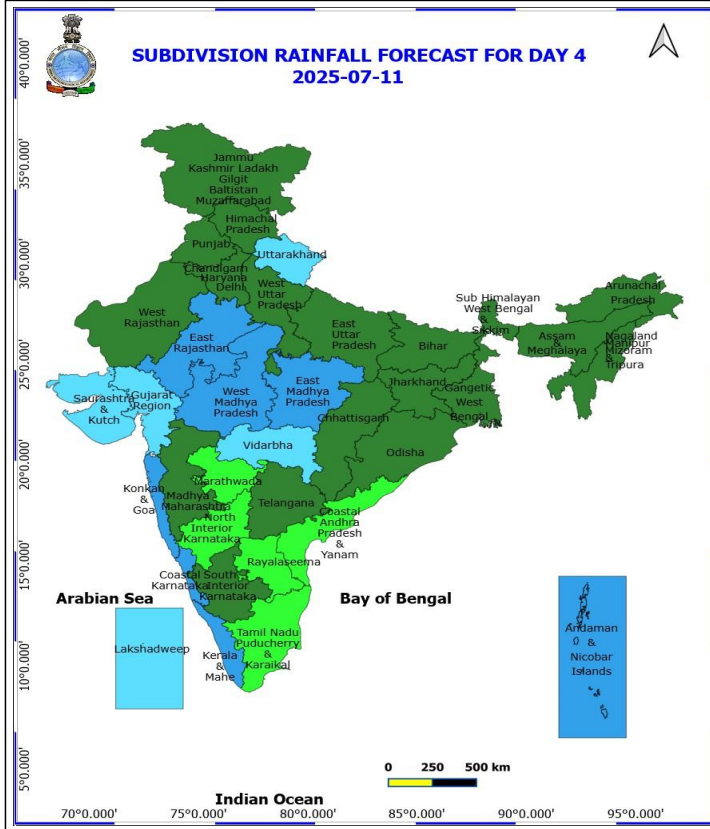
- ❖ **Heavy to Very Heavy Rainfall** very likely at isolated places over East Madhya Pradesh, East Rajasthan and Uttarakhand.
- ❖ **Heavy Rainfall** very likely at isolated places over Chhattisgarh, Coastal Karnataka, East Uttar Pradesh, Haryana, Chandigarh & Delhi, Himachal Pradesh, Jammu-Kashmir-Ladakh-Gilgit-Baltistan-Muzaffarabad, Kerala & Mahe, Konkan & Goa, Madhya Maharashtra, Punjab, South Interior Karnataka, Vidarbha and West Madhya Pradesh.
- ❖ **Thunderstorm accompanied with lightning & gusty winds(30-40kmph)** very likely at isolated places over Gangetic West Bengal, Jammu-Kashmir-Ladakh-Gilgit-Baltistan-Muzaffarabad and West Rajasthan.
- ❖ **Thunderstorm accompanied with Lightning** very likely at isolated places over Chhattisgarh, Coastal Andhra Pradesh, East Rajasthan, Gujarat State, Jharkhand, Madhya Pradesh, Telangana, Uttar Pradesh and Uttarakhand.
- ❖ **Strong Surface Winds** very likely at isolated places over Andhra Pradesh and Telangana.
 - Squally wind speed reaching 45 kmph to 55 kmph gusting to 65 kmph is likely to prevail along and off Somalia, Oman & adjoining Yemen coasts, most parts of westcentral Arabian Sea & adjoining, many parts of eastcentral Arabian Sea, northern parts of southwest Arabian Sea, Gulf of Mannar.
 - Squally weather with wind speed 40 - 50 kmph gusting to 60 kmph likely to prevail along and off south Gujarat & adjoining north Gujarat coast, Konkan, Goa, Karnataka coasts and adjoining sea areas, over some southern parts of northeast Arabian Sea, over many parts of westcentral Bay of Bengal, along and off north Andhra Pradesh coast, adjoining Odisha coast, some southern parts of northwest Bay of Bengal.

***Red color warning does not mean "Red Alert" Red color warning means "Take Action"**

Forecast and warning for any day is valid from 0830 hours IST of day till 0830 hours IST of next day

For more details kindly visit <https://mausam.imd.gov.in> or contact 011-2434-4599

(Service to the nation since 1875)



11 July (Day 4)

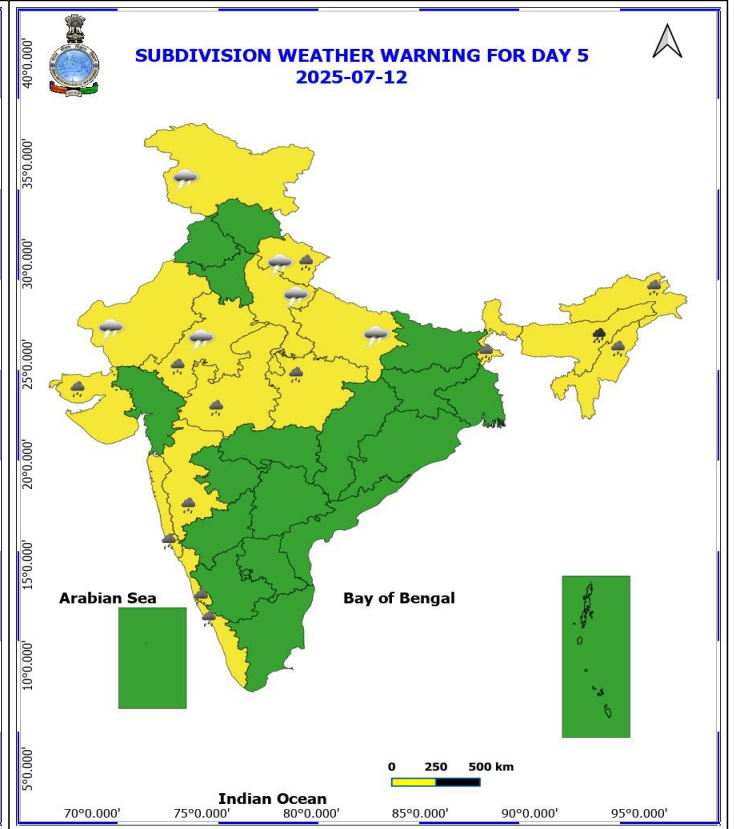
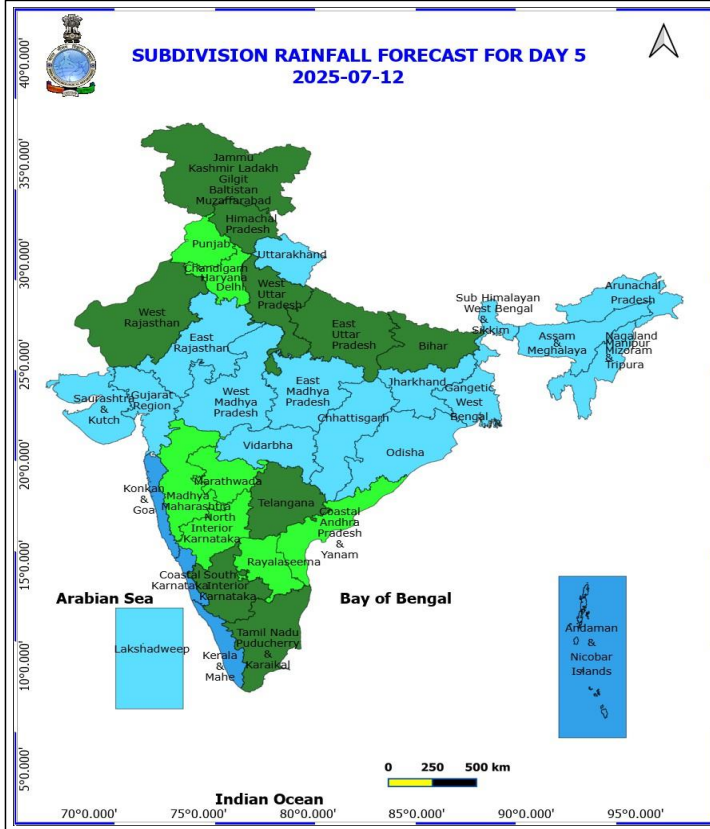
- ❖ **Heavy Rainfall** likely at isolated places over Arunachal Pradesh, Assam & Meghalaya, Coastal Karnataka, East Rajasthan, Kerala & Mahe, Konkan & Goa, Madhya Maharashtra, Madhya Pradesh, South Interior Karnataka and Uttarakhand.
- ❖ **Thunderstorm accompanied with lightning & gusty winds(30-40kmph)** likely at isolated places over Jammu-Kashmir-Ladakh-Gilgit-Baltistan-Muzaffargarh and West Rajasthan.
- ❖ **Thunderstorm accompanied with Lightning** likely at isolated places over Chhattisgarh, Coastal Andhra Pradesh, East Rajasthan, Gujarat State, Jharkhand, Madhya Pradesh, Telangana, Uttar Pradesh and Uttarakhand.
- ❖ **Strong Surface Winds** likely at isolated places over Telangana.
 - Squally wind speed reaching 45 kmph to 55 kmph gusting to 65 kmph is likely to prevail along and off Somalia, Oman & adjoining Yemen coasts, most parts of westcentral Arabian Sea & adjoining, many parts of eastcentral Arabian Sea, northern parts of southwest Arabian Sea.
 - Squally weather with wind speed 40 - 50 kmph gusting to 60 kmph likely to prevail along and off south Gujarat & adjoining north Gujarat coast, Konkan, Goa, Karnataka coasts and adjoining sea areas, over some southern parts of northeast Arabian Sea, over some parts of westcentral Bay of Bengal, over few southern parts of northwest Bay of Bengal.

***Red color warning does not mean "Red Alert" Red color warning means "Take Action"**

Forecast and warning for any day is valid from 0830 hours IST of day till 0830 hours IST of next day

For more details kindly visit <https://mausam.imd.gov.in> or contact 011-2434-4599

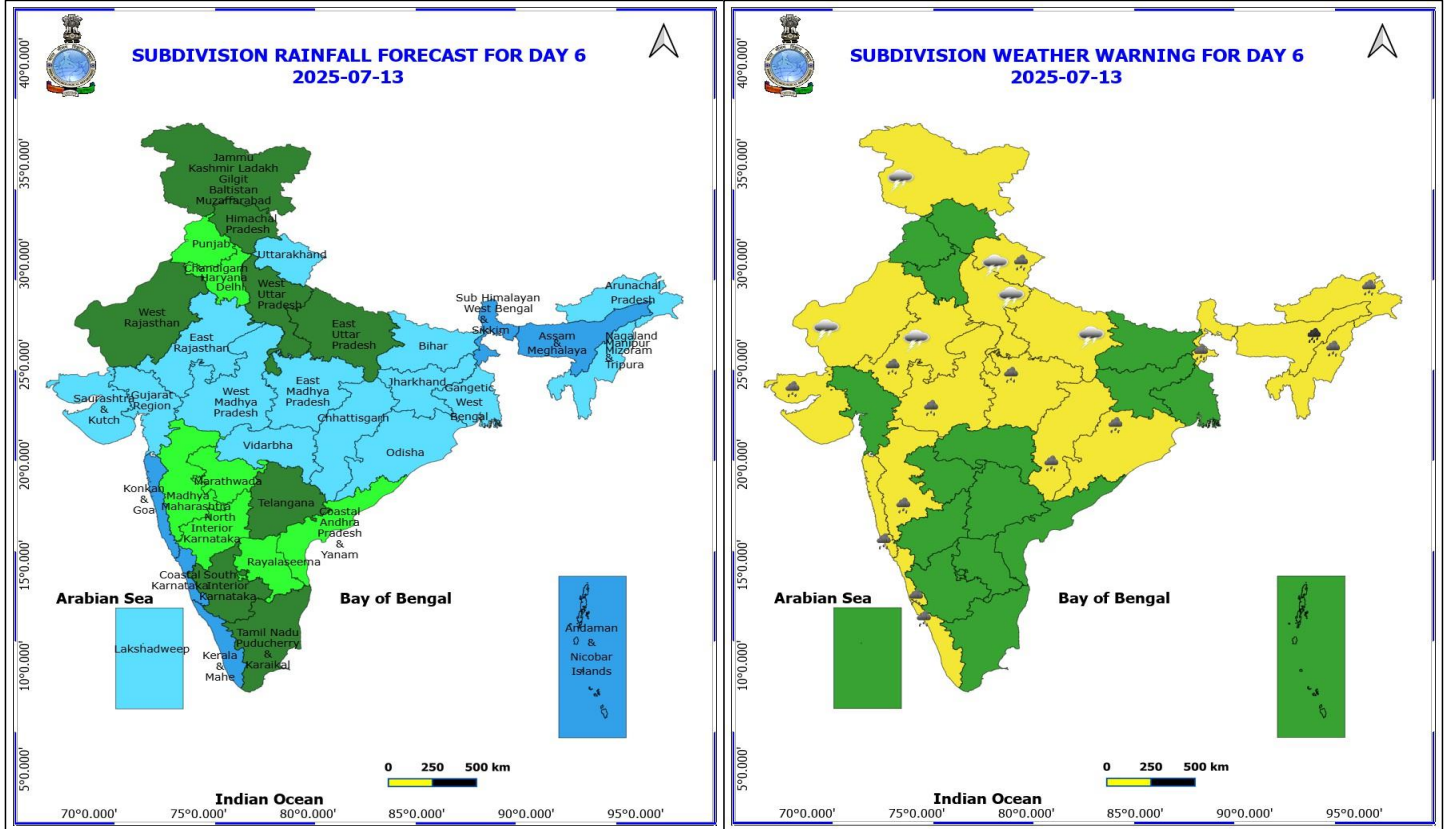
(Service to the nation since 1875)



12 July (Day 5)

- ❖ **Heavy to Very Heavy Rainfall** likely at isolated places over Assam & Meghalaya.
- ❖ **Heavy Rainfall** likely at isolated places over Arunachal Pradesh, Coastal Karnataka, East Rajasthan, Kerala & Mahe, Konkan & Goa, Madhya Maharashtra, Madhya Pradesh, Nagaland, Manipur, Mizoram and Tripura, Saurashtra & Kutch, Sub Himalayan West Bengal & Sikkim and Uttarakhand.
- ❖ **Thunderstorm accompanied with lightning & gusty winds(30-40kmph)** likely at isolated places over Jammu-Kashmir-Ladakh-Gilgit-Baltistan-Muzaffargarh and West Rajasthan.
- ❖ **Thunderstorm accompanied with Lightning** likely at isolated places over East Rajasthan, Uttar Pradesh and Uttarakhand.

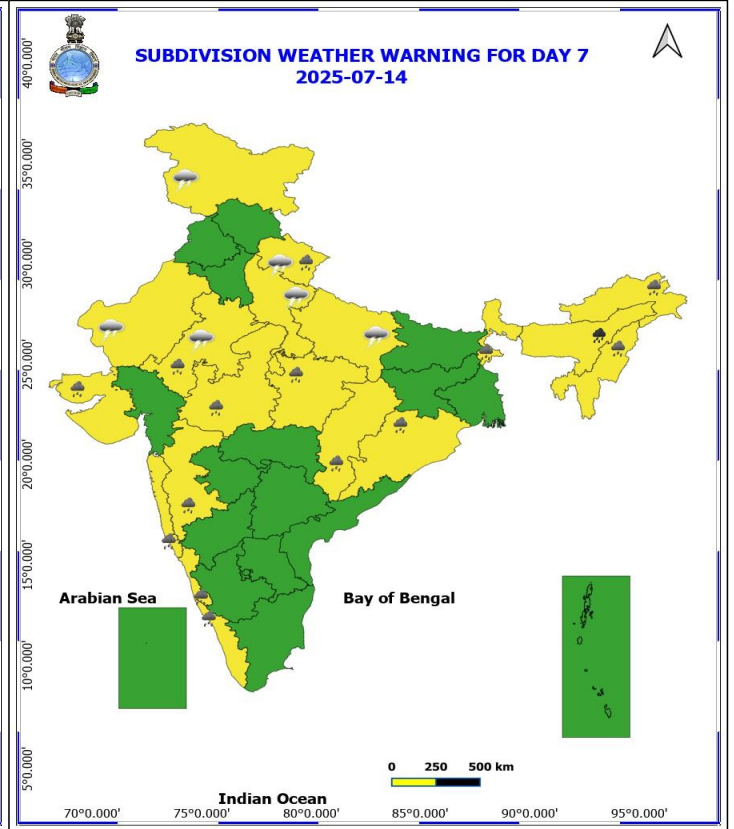
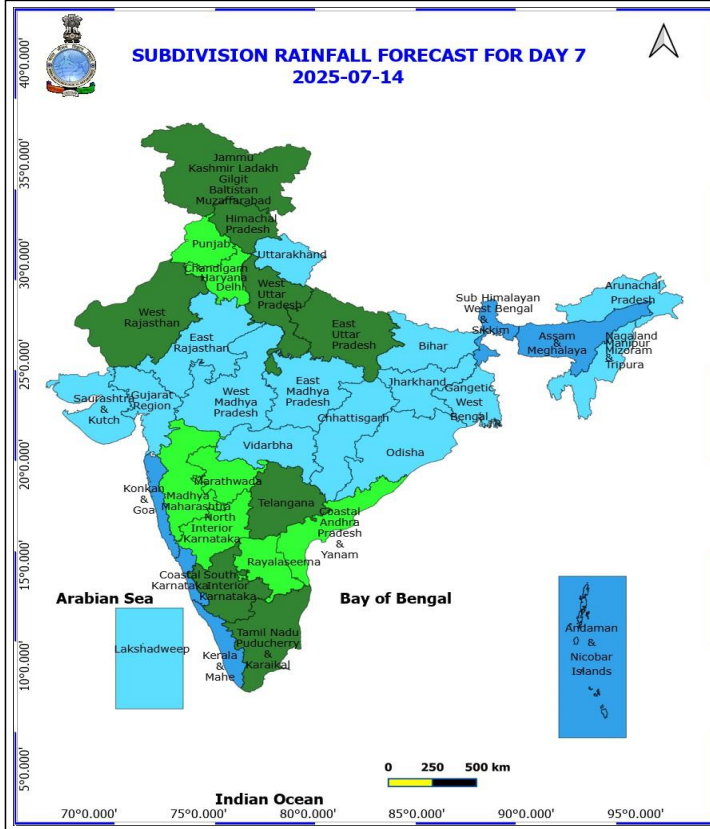
No Fishermen Warning



13 July (Day 6)

- ❖ **Heavy to Very Heavy Rainfall** likely at isolated places over Assam & Meghalaya.
- ❖ **Heavy Rainfall** likely at isolated places over Arunachal Pradesh, Chhattisgarh, Coastal Karnataka, East Rajasthan, Kerala & Mahe, Konkan & Goa, Madhya Maharashtra, Madhya Pradesh, Nagaland, Manipur, Mizoram and Tripura, Odisha, Saurashtra & Kutch, Sub Himalayan West Bengal & Sikkim and Uttarakhand.
- ❖ **Thunderstorm accompanied with lightning & gusty winds(30-40kmph)** likely at isolated places over Jammu-Kashmir-Ladakh-Gilgit-Baltistan-Muzaffarabad and West Rajasthan.
- ❖ **Thunderstorm accompanied with Lightning** likely at isolated places over East Rajasthan, Uttar Pradesh and Uttarakhand.

No Fishermen Warning



14 July (Day 7)

- ❖ **Heavy to Very Heavy Rainfall** likely at isolated places over Assam & Meghalaya.
- ❖ **Heavy Rainfall** likely at isolated places over Arunachal Pradesh, Chhattisgarh, Coastal Karnataka, East Rajasthan, Kerala & Mahe, Konkan & Goa, Madhya Maharashtra, Madhya Pradesh, Nagaland, Manipur, Mizoram and Tripura, Odisha, Saurashtra & Kutch, Sub Himalayan West Bengal & Sikkim and Uttarakhand.
- ❖ **Thunderstorm accompanied with lightning & gusty winds(30-40kmph)** likely at isolated places over Jammu-Kashmir-Ladakh-Gilgit-Baltistan-Muzaffargarh and West Rajasthan.
- ❖ **Thunderstorm accompanied with Lightning** likely at isolated places over East Rajasthan, Uttar Pradesh and Uttarakhand.

No Fishermen Warning

Flash Flood Warnings

24 hours Outlook for the Flash Flood Risk (FFR) till 0530 IST of 09-07-2025 :

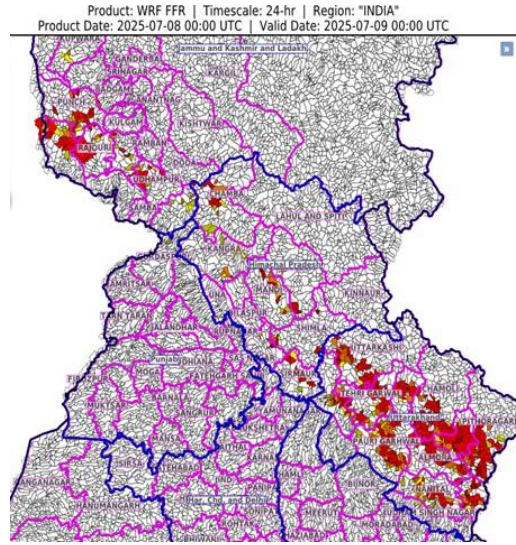
Low to Moderate flash flood risk likely over few watersheds & neighbourhoods of following Met Sub-divisions during next 24 hours.

Jammu & Kashmir & Ladakh – Kupwara, Punch, Mirpur, Rajouri, Reasi, Udhampur, Doda and Kathua districts.

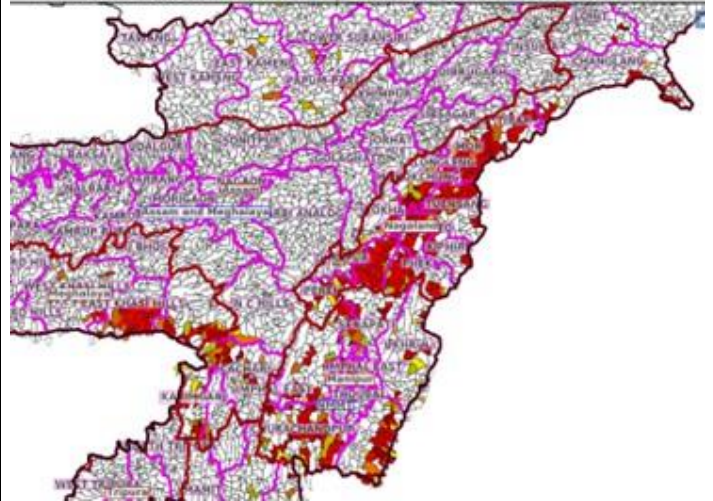
Himachal Pradesh – Chamba, Kangra, Mandi, Kullu, Shimla, Sirmaur and Solan districts.

Uttarakhand – Uttarkashi, Dehradun, Haridwar, Bageshwar, Almora, Chamoli, Dehradun, Pauri Garhwal, Pithoragarh, Rudraprayag, Nainital, Chapawat, Udham Singh Nagar and Tehri Garwal districts.

Surface runoff/ Inundation may occur at some fully saturated soils & low-lying areas over Area of Concern (AoC) as shown in map due to expected rainfall occurrence in next 24 hours.



Product: WRF FFR | Timescale: 24-hr | Region: "INDIA"
Product Date: 2025-07-08 00:00 UTC | Valid Date: 2025-07-09 00:00 UTC



Product: WRF FFR | Timescale: 24-hr | Region: "INDIA"
Product Date: 2025-07-08 00:00 UTC | Valid Date: 2025-07-09 00:00 UTC

24 hours Outlook for the Flash Flood Risk (FFR) till 0530 IST of 09-07-2025 :

Low to Moderate flash flood risk likely over few watersheds & neighbourhoods of following Met Sub-divisions during next 24 hours.

Assam & Meghalaya –West Khasi Hills, East Khasi Hills, Jaintia Hills, NC Hills, Cachar and Karimganj districts.

NMMT

Nagaland – Peren, Dimapur, Kohima, Phek, Kiphire, Mon, Wokha, Mokochung, Longleng, Tuensang and Zunheboto districts.

Manipur – Imphal East, Churachandpur, Chandel, Thoubal, Bishnupur, Tamenglong, Ukhrul and Senapati districts.

Arunachal Pradesh – Tirap, Changlang and Lohit districts.

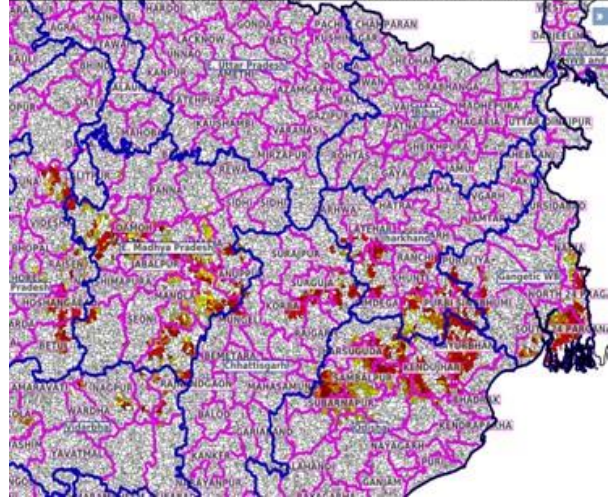
Surface runoff/ Inundation may occur at some fully saturated soils & low-lying areas over Area of Concern (AoC) as shown in map due to expected rainfall occurrence in next 24 hours.

24 hours Outlook for the Flash Flood Risk (FFR) till

***Red color warning does not mean "Red Alert" Red color warning means "Take Action"**
Forecast and warning for any day is valid from 0830 hours IST of day till 0830 hours IST of next day
For more details kindly visit <https://mausam.imd.gov.in> or contact 011-2434-4599

(Service to the nation since 1875)

Product: WRF FFR | Timescale: 24-hr | Region: "INDIA"
Product Date: 2025-07-08 00:00 UTC | Valid Date: 2025-07-09 00:00 UTC



0530 IST of 09-07-2025 :

Low to Moderate flash flood risk likely over few watersheds & neighbourhoods of following Met Sub-divisions during next 24 hours.

Gangetic West Bengal – North 24 Paragnas, South 24 Paragnas, Haora, East Mednipur, Nadia, Hugli, Bankura, Pashchim Mednipur, Saraikela and Puruliya districts.

Odisha – Jharsuguda, Dhenkenal, Bauda, Jajapur, Kendujhar, Mayurbhanj, Baragarh, Baleswar, Subarnpur, Sundergarh, Sambalpur and Deogarh districts.

Jharkhand – Gumla, Simdega, Lohardaga, Latehar, Khunti, Pashchim Singhbhum, Purbi Singhbhum, Saraikela, Ramgarh, Bokara, Dhanbad, Garhwa, Hazaribagh and Ranchi districts.

Chhattisgarh – Korba, Surguja, Bilaspur, Mungeli, Kawardha, Jashpur, Rajgarh, Mahasamund, Korea and Balrampur districts.

East Madhya Pradesh –Shahdol, Umaria, Annupur, Dindori, Mandla, Jabalpur, Seoni, Balaghat, Panna, Damoh, Satna, Katni, Sagar, Chhindwara, Narsimhapura and Umaria districts.

West Madhya Pradesh – Betul, Hoshangabad, Raisen, Sehore, Videsha, Ashoknagar and Bhopal districts.

Surface runoff/ Inundation may occur at some fully saturated soils & low-lying areas over Area of Concern (AoC) as shown in map due to expected rainfall occurrence in next 24 hours.

***Red color warning does not mean "Red Alert" Red color warning means "Take Action"**

Forecast and warning for any day is valid from 0830 hours IST of day till 0830 hours IST of next day

For more details kindly visit <https://mausam.imd.gov.in> or contact 011-2434-4599

(Service to the nation since 1875)



Table-1

7 Days Rainfall Forecast

S.No.	Subdivision	8- Jul	9- Jul	10- Jul	11- Jul	12- Jul	13- Jul	14- Jul
		Day 1	Day 2	Day 3	Day 4	Day 5	Day 6	Day 7
1	ANDAMAN & NICOBAR ISLANDS	FWS	FWS	WS	WS	WS	WS	WS
2	ARUNACHAL PRADESH	SCT	SCT	SCT	SCT	FWS	FWS	FWS
3	ASSAM & MEHGHALAYA	FWS	SCT	SCT	SCT	FWS	WS	WS
4	N. M. M. & T.	FWS	FWS	SCT	SCT	FWS	FWS	FWS
5	S.H. WEST BENGAL & SIKKIM	FWS	WS	FWS	SCT	FWS	WS	WS
6	GANGETIC WEST BENGAL	WS	FWS	SCT	SCT	FWS	FWS	FWS
7	ODISHA	FWS	FWS	SCT	SCT	FWS	FWS	FWS
8	JHARKHAND	WS	FWS	SCT	SCT	FWS	FWS	FWS
9	BIHAR	ISOL	SCT	SCT	SCT	SCT	FWS	FWS
10	EAST UTTAR PRADESH	SCT	SCT	SCT	SCT	SCT	SCT	SCT
11	WEST UTTAR PRADESH	FWS	FWS	SCT	SCT	SCT	SCT	SCT
12	UTTARAKHAND	WS	WS	WS	FWS	FWS	FWS	FWS
13	HARYANA, CHD & DELHI	WS	FWS	SCT	SCT	ISOL	ISOL	ISOL
14	PUNJAB	WS	FWS	SCT	SCT	ISOL	ISOL	ISOL
15	HIMACHAL PRADESH	FWS	FWS	FWS	SCT	SCT	SCT	SCT
16	JAMMU AND KASHMIR AND LADAKH	FWS	FWS	FWS	SCT	SCT	SCT	SCT
17	WEST RAJASTHAN	ISOL	ISOL	ISOL	SCT	SCT	SCT	SCT
18	EAST RAJASTHAN	FWS	FWS	WS	WS	FWS	FWS	FWS
19	WEST MADHYA PRADESH	WS	WS	WS	WS	FWS	FWS	FWS
20	EAST MADHYA PRADESH	WS	WS	WS	WS	FWS	FWS	FWS
21	GUJRAT REGION	WS	WS	FWS	FWS	FWS	FWS	FWS
22	SAURASHTRA & KUTCH	WS	FWS	FWS	FWS	FWS	FWS	FWS
23	KONKAN & GOA	WS	WS	WS	WS	WS	WS	WS
24	MADHYA MAHARASHTRA	FWS	FWS	SCT	SCT	ISOL	ISOL	ISOL
25	MARATHWADA	FWS	FWS	ISOL	ISOL	ISOL	ISOL	ISOL
26	VIDARBHA	WS	WS	WS	FWS	FWS	FWS	FWS
27	CHATTISGARH	WS	FWS	SCT	SCT	FWS	FWS	FWS
28	COASTAL ANDHRA PRADESH	ISOL	ISOL	ISOL	ISOL	ISOL	ISOL	ISOL
29	TELANGANA	FWS	FWS	SCT	SCT	SCT	SCT	SCT
30	RAYALASEEMA	ISOL	ISOL	ISOL	ISOL	ISOL	ISOL	ISOL
31	TAMILNADU & PUDUCHERRY	ISOL	ISOL	ISOL	ISOL	SCT	SCT	SCT
32	COSTAL KARNATAKA	WS	WS	WS	WS	WS	WS	WS
33	NORTH INTERIOR KARNATAKA	SCT	ISOL	ISOL	ISOL	ISOL	ISOL	ISOL
34	SOUTH INTERIOR KARNATAKA	SCT	SCT	SCT	SCT	SCT	SCT	SCT
35	KERALA	FWS	WS	WS	WS	WS	WS	WS
36	LAKSHDWEEP	FWS	FWS	FWS	FWS	FWS	FWS	FWS

Legend	Category	%Stations
WS	Widespread/Most Places	76-100
FWS	Fairly Widespread/Many Places	51-75
SCT	Scattered/ A Few Places	26-50
ISOL	Isolated Places	1-25
DRY	No Rain	0

***Red color warning does not mean "Red Alert" Red color warning means "Take Action"**
Forecast and warning for any day is valid from 0830 hours IST of day till 0830 hours IST of next day
For more details kindly visit <https://mausam.imd.gov.in> or contact 011-2434-4599

(Service to the nation since 1875)

Fig. 1: Maximum Temperatures Dated 2025-07-08

Fig. 2: Departure of Maximum Temp. Dated 2025-07-08

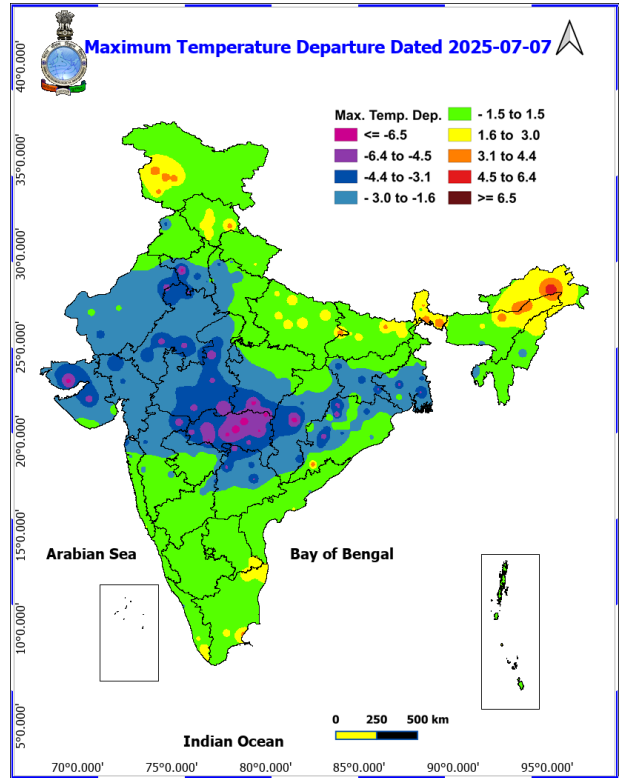
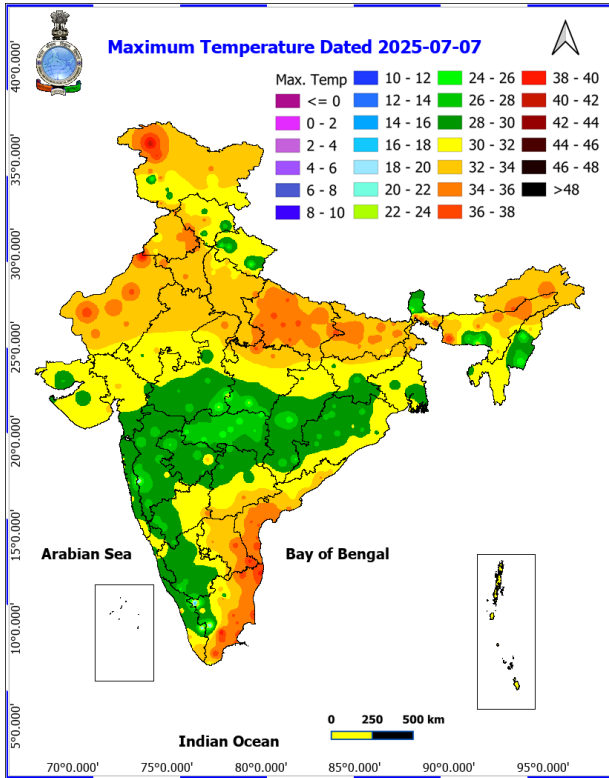
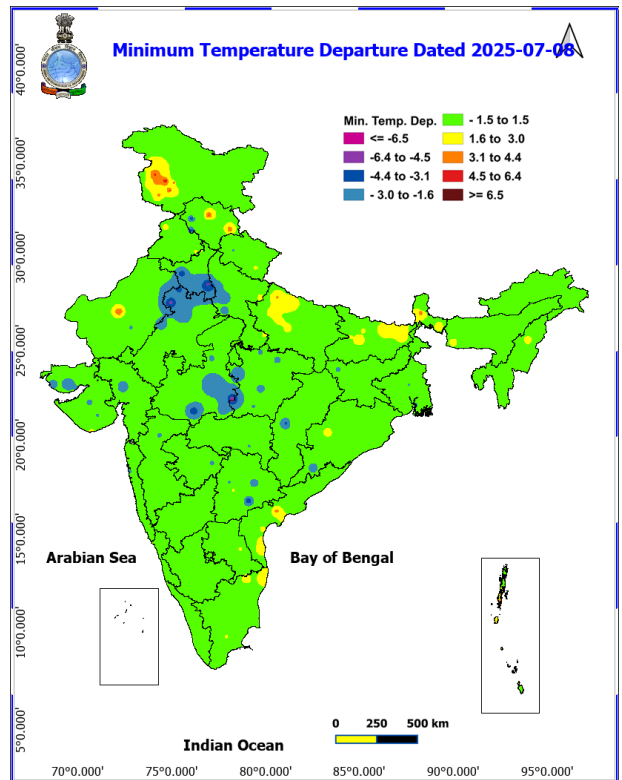
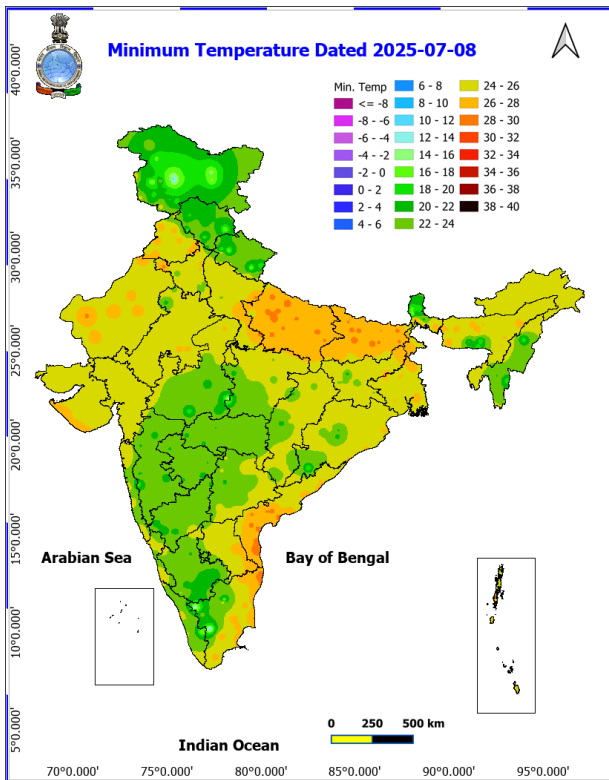


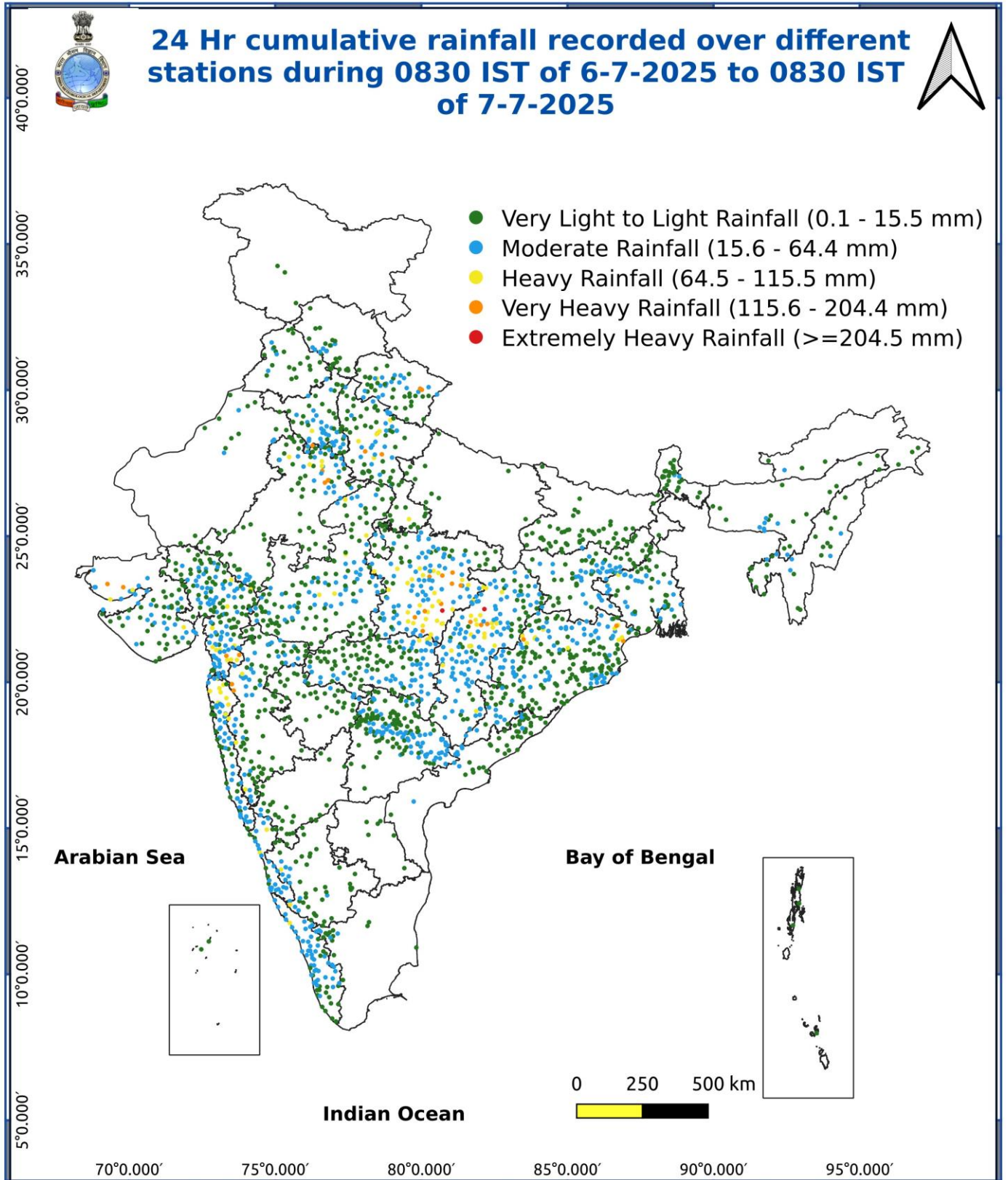
Fig. 3: Minimum Temperatures Dated 2025-07-08

Fig. 4: Departure of Minimum Temp. Dated 2025-07-08



***Red color warning does not mean "Red Alert" Red color warning means "Take Action"**
Forecast and warning for any day is valid from 0830 hours IST of day till 0830 hours IST of next day
For more details kindly visit <https://mausam.imd.gov.in> or contact 011-2434-4599

(Service to the nation since 1875)



***Red color warning does not mean "Red Alert" Red color warning means "Take Action"**
Forecast and warning for any day is valid from 0830 hours IST of day till 0830 hours IST of next day
For more details kindly visit <https://mausam.imd.gov.in> or contact 011-2434-4599

(Service to the nation since 1875)

- ♦ **very heavy rainfall** over Madhya Pradesh, Uttarakhand, East Rajasthan, Konkan, Madhya Maharashtra during 08th-10th; Odisha on 08th; Vidarbha, Telangana on 08th & 09th; Chhattisgarh on 08th; Punjab, Haryana Chandigarh on 08th July.

Impact Expected

- ♦ Localized Flooding of roads, water logging in low lying areas and closure of underpasses mainly in urban areas of the above region.
- ♦ Occasional reduction in visibility due to heavy rainfall.
- ♦ Disruption of traffic in major cities due to water logging in roads leading to increased travel time.
- ♦ Minor damage to kutcha roads.
- ♦ Possibilities of damage to vulnerable structure.
- ♦ Localized Landslides/Mudslides/landslips/mudslips/landsinks/mudsinks.
- ♦ Damage to horticulture and standing crops in some areas due to inundation.
- ♦ It may lead to riverine flooding in some river catchments (for riverine flooding please visit Web page of CWC)

Action Suggested

- ♦ Check for traffic congestion on your route before leaving for your destination.
- ♦ Follow any traffic advisories that are issued in this regard.
- ♦ Avoid going to areas that face the water logging problems often.
- ♦ Avoid staying in vulnerable structure.

Agromet advisories for various parts of the country

- ♦ In **East Madhya Pradesh**, postpone sowing of maize and soybean and transplanting of rice. Drain out excess water from rice nurseries and transplanted rice fields, fields of already sown maize and soybean. In **West Madhya Pradesh**, drain out excess water from fields of maize, soybean and vegetables and fruit orchards to avoid waterlogging. Postpone sowing of soybean in **Satpura Plateau Zone** and **Gird Zone** and sowing of rice nurseries in **Central Narmada Valley Zone**.
- ♦ In **Chhattisgarh**, ensure proper drainage in rice nurseries, fields of rice, maize, pigeon pea, minor millets and vegetables. Postpone line sowing / transplanting of rice and sowing of pigeon pea, maize and soybean in **Plain Zone** and sowing of pigeon pea in **North Hill Zone**.
- ♦ In **Uttarakhand**, ensure proper drainage facilities in soybean, maize, barnyard millet, finger millet, pigeon pea, kidney beans, vegetables and orchards. Harvest matured vegetables and fruits and store in safe place.
- ♦ In **Himachal Pradesh**, drain out excess water from the fields of maize and vegetables and fruit orchards. Harvest matured fruits and vegetables and store them in safer places. In **High Hills Sub Temperate Wet Zone**, postpone sowing of kidney beans and nursery sowing and transplanting of rice.
- ♦ In **East Rajasthan**, drain out excess water from the fields of cotton, soybean, groundnut and green gram. Postpone sowing of maize in **Southern Humid Plain Zone**, sowing or re-sowing of sesame, green gram and pearl millet in **Flood Prone Eastern Plain Zone** and sowing of green gram, cluster bean, pearl millet and sesame in **Sub Humid Southern Plain and Aravali Hill Zone** till cessation of heavy rainfall.
- ♦ In **Konkan**, make arrangement to drain out excess water from rice and finger millet nurseries, groundnut, vegetables and orchards. In **ghat areas** of **Madhya Maharashtra** drain out excess water from rice and finger millet nurseries. In **Vidarbha**, ensure proper drainage in *khari* crops such as rice, soybean, cotton etc., vegetable nurseries and orchards.
- ♦ In **Gujarat region**, drain out excess water from rice nurseries, sugarcane fields, banana and mango plantations to prevent waterlogging. Provide support to sugarcane with strong bamboo or tie the leaves together to prevent lodging. In **Saurashtra & Kutch**, drain out excess water from fields of groundnut, soybean, cotton and vegetables and horticultural plantations. Undertake propping in sugarcanes with strong bamboo or tie the leaves together in a clump to protect against wind and heavy rain.
- ♦ In **Odisha**, ensure proper drainage from already sown rice nurseries, fields of maize and vegetables to prevent waterlogging. Harvest matured vegetables and fruits and keep in safer places. In **West Central Table Land**

*Red color warning does not mean "Red Alert" Red color warning means "Take Action"

Forecast and warning for any day is valid from 0830 hours IST of day till 0830 hours IST of next day

For more details kindly visit <https://mausam.imd.gov.in> or contact 011-2434-4599

(Service to the nation since 1875)

Zone, postpone sowing of pigeon pea and groundnut. In case of poor germination / no germination in maize crop due to waterlogged condition, carry out re-sowing during favourable weather. In **Keonjhar** district, postpone sowing of maize.

- In **Gangetic West Bengal**, ensure proper drainage from rice, jute and vegetable fields. In **New Alluvial Zone**, harvest matured sesame and groundnut crop immediately and keep in safer places.
- In **Jharkhand**, make necessary arrangements to drain out excess water from maize fields, rice and vegetable nurseries. Cover the vegetable nurseries with polythene sheets.

Livestock / Fishery

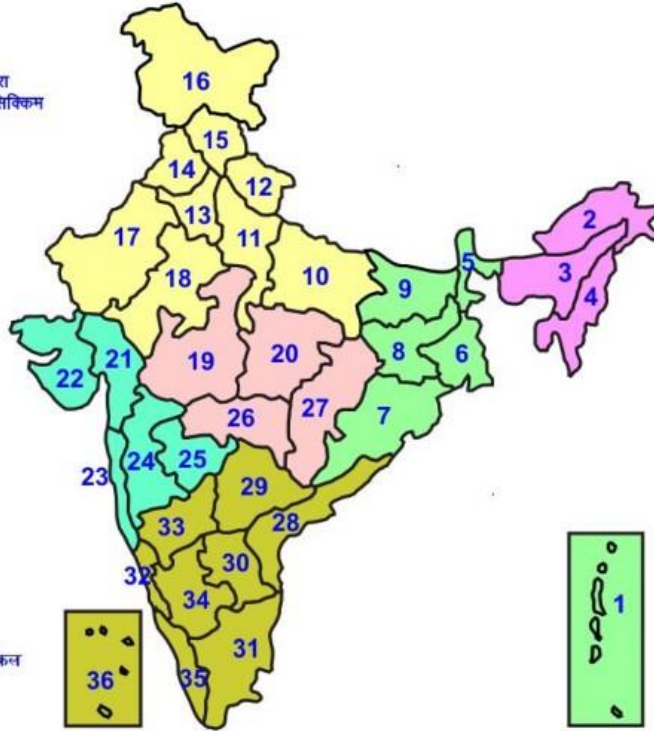
- Keep the animals inside the shed during heavy rainfall and provide them balanced feed.
- Store feed and fodder in a safe place to prevent spoilage.
- Construct an outlet with proper netting around the ponds to drain out excess water, thereby preventing fish from escaping in case of overflow.

Agromet advisories for likely impact of Thunderstorm / Gusty Winds / Squally Winds

- Provide mechanical support to horticultural crops and staking or support to vegetables and young fruit plants / fruit-bearing plants to avoid lodging due to strong winds.

LEGENDS

- 1 अंडमान और निकोबार द्वीप समुह
- 2 अरुणाचल प्रदेश
- 3 असम और मेघालय
- 4 नागालैंड मनीपुर मीजोरम और त्रिपुरा
- 5 उप हिमालय पश्चिम बंगाल एवं सिक्किम
- 6 पश्चिम बंगाल
- 7 ओडिसा
- 8 झारखंड
- 9 बिहार
- 10 पूर्वी उत्तर प्रदेश
- 11 पश्चिम उत्तर प्रदेश
- 12 उत्तराखंड
- 13 हरियाणा चंडिगढ़ एवं दिल्ली
- 14 पंजाब
- 15 हिमाचल प्रदेश
- 16 जम्मू एवं कश्मीर एवं लद्दाख
- 17 पश्चिम राजस्थान
- 18 पूर्वी राजस्थान
- 19 पश्चिम मध्य प्रदेश
- 20 पूर्वी मध्य प्रदेश
- 21 गुजरात क्षेत्र
- 22 सौराष्ट्र एवं कच्छ
- 23 कोंकण एवं गोवा
- 24 मध्य महाराष्ट्र
- 25 मराठावाड़ा
- 26 विदर्भ
- 27 छत्तीसगढ़
- 28 तटीय आंध्र प्रदेश एवं यनम
- 29 तेलंगाना
- 30 रायलसीमा
- 31 तमिलनाडु, पुदुचेरी एवं कराईकल
- 32 तटिय कर्नाटक
- 33 आंतरिक उत्तरी कर्नाटक
- 34 आंतरिक दक्षिणी कर्नाटक
- 35 केरल एवं माहे
- 36 लक्षद्वीप



1. Andaman & Nicobar Islands
2. Arunachal Pradesh
3. Assam & Meghalaya
4. Nagaland, Manipur, Mizoram & Tripura
5. Sub-Himalayan West Bengal & Sikkim
6. Gangetic West Bengal
7. Orissa
8. Jharkhand
9. Bihar
10. East Uttar Pradesh
11. West Uttar Pradesh
12. Uttarakhand
13. Haryana, Chd & Delhi
14. Punjab
15. Himachal Pradesh
16. Jammu & Kashmir and Ladakh
17. West Rajasthan
18. East Rajasthan
19. West Madhya Pradesh
20. East Madhya Pradesh
21. Gujarat
22. Saurashtra
23. Konkan & Goa
24. Madhya Maharashtra
25. Marathwada
26. Vidharbha
27. Chhattisgarh
28. Coastal Andhra Pradesh & Yanam
29. Telangana
30. Rayalaseema
31. Tamilnadu, Puducherry & Karaikal
32. Coastal Karnataka
33. North Interior Karnataka
34. South Interior Karnataka
35. Kerala & Mahe
36. Lakshadweep

SPATIAL DISTRIBUTION (% of Stations reporting)

% Stations	Category	% Stations	Category
76-100	Widespread (WS/ Most Places)	26-50	Scattered (SCT/ A Few Places)
51-75	Fairly Widespread (FWS/ Many Places)	1-25	Isolated (ISOL)

Subdivision Colour

- NO WARNING
- WATCH (BE UPDATED)
- ALERT (BE PREPARED TO TAKE ACTION)
- WARNING (TAKE ACTION)

Probabilistic Forecast

Terms	Probability of Occurrence (%)
Unlikely	< 25
Likely	25 - 50
Very Likely	50 - 75
Most Likely	> 75

- | | | | |
|--------------------------|-----------------|----------------------|--------------------|
| Heavy Rain | Very Heavy Rain | Extremely Heavy Rain | Heavy Snow |
| Thunderstorm & Lightning | Hailstorm | Dust Storm | Dust Raising Winds |
| Strong surface winds | Heat Wave | Hot Day | Warm Night |
| Cold Wave | Cold Day | Ground Frost | Fog |
| Hot & Humid | | | |

*Red color warning does not mean "Red Alert" Red color warning means "Take Action"

Forecast and warning for any day is valid from 0830 hours IST of day till 0830 hours IST of next day

For more details kindly visit <https://mausam.imd.gov.in> or contact 011-2434-4599

(Service to the nation since 1875)

LEGENDS

WARNING

WARNING (TAKE ACTION)
ALERT (BE PREPARED)
WATCH (BE UPDATED)
NO WARNING (NO ACTION)

Probabilistic Forecast

Terms	Probability of Occurrence (%)
Unlikely	< 25
Likely	25 - 50
Very Likely	50 - 75
Most Likely	> 75



Heavy: 64.5 to 115.5 mm/cm *
Very Heavy: 115.6 to 204.4 mm/cm *
Extremely Heavy: > 204.4 mm/cm *



When maximum temperature of a station reaches $\geq 40^{\circ}\text{C}$ for plains and $\geq 30^{\circ}\text{C}$ for hilly regions
(a) Based on Departure from normal

Heat Wave: Maximum Temperature Departure from normal 4.5°C to 6.4°C .
Severe Heat Wave: Maximum Temperature Departure from normal $\geq 6.5^{\circ}\text{C}$

(b). Based on Actual maximum temperature

Heat Wave: When actual maximum temperature $\geq 45^{\circ}\text{C}$.
Severe Heat Wave: When actual maximum temperature $\geq 47^{\circ}\text{C}$

(c). Criteria for heat wave for coastal stations

When maximum temperature departure is $> 4.5^{\circ}\text{C}$ from normal. Heat Wave may be described provided maximum temperature $\geq 37^{\circ}\text{C}$



When maximum temperature remains 40°C

Warm Night: When minimum temperature departure 4.5°C to 6.4°C .
Severe Warm Night: When minimum temperature departure $> 6.4^{\circ}\text{C}$.



When minimum temperature of a station $\leq 10^{\circ}\text{C}$ for plains and $\leq 0^{\circ}\text{C}$ for hilly regions.

(a). Based on departure

Cold Wave: Minimum Temperature Departure from normal -4.5°C to -6.4°C .
Severe Cold Wave: Minimum Temperature Departure from normal $\leq -6.5^{\circ}\text{C}$

(b) Based on actual Minimum Temperature (for Plains only)

Cold Wave : When Minimum Temperature is $\leq 4.0^{\circ}\text{C}$
Severe Cold Wave: When Minimum Temperature is $\leq 2.0^{\circ}\text{C}$

(c) For Coastal Stations

When Minimum Temperature departure is $\leq -4.5^{\circ}\text{C}$ & actual Minimum Temperature is $\leq 15^{\circ}\text{C}$



When minimum temperature of a station $\leq 10^{\circ}\text{C}$ for plains and $\leq 0^{\circ}\text{C}$ for hilly regions
Based on departure

Cold Day: Maximum Temperature Departure from normal -4.5°C to -6.4°C .
Severe Cold Day: Maximum Temperature Departure from normal $\leq -6.5^{\circ}\text{C}$



Phenomenon of small droplets suspended in air and the horizontal visibility $< 1\text{km}$

Moderate Fog: When the visibility between 500-200 metres
Dense Fog: when the visibility between 50- 200 metres
Very Dense Fog: when the visibility < 50 metres



Sudden electrical discharges manifested by a flash of light (Lightning) and a sharp rumbling sound (thunder)



An ensemble of particles of dust or sand energetically lifted to great heights by a strong and turbulent wind.



Ice deposits on ground

Air temperature $\leq 4^{\circ}\text{C}$ (over Plains)



A strong wind that rises suddenly, lasts for atleast 1 minute.

Moderate: Wind speed 52-61 kmph
Severe: Wind speed 62-87 kmph
Very Severe: Wind speed > 87 kmph



Effect of various waves in the sea over specific area

Rough to very rough: Wind speed 41-62 kmph (22-33 knots) & Wave height 2.5-6 metre
High to very high: Wind speed 63-117 kmph (34-63 knots) & Wave height 6-14 metre
Phenomenal: Wind speed > 117 kmph (> 63 knots) & Wave height > 14 metre



Cyclonic Storm: Wind speed 62-87 kmph (34-47 knots)
Severe Cyclonic Storm: Wind speed 88-117 kmph (48-63 knots)
Very Severe Cyclonic Storm: Wind speed 118-165 kmph (64 - 89 knots)
Extremely Severe Cyclonic Storm: Wind speed 166-220 kmph (90 -119 knots)
Super Cyclone Storm: Wind speed > 220 kmph (> 119 knots)

*Red color warning does not mean "Red Alert" Red color warning means "Take Action"

Forecast and warning for any day is valid from 0830 hours IST of day till 0830 hours IST of next day

For more details kindly visit <https://mausam.imd.gov.in> or contact 011-2434-4599

(Service to the nation since 1875)