

Monday, March 10, 2025
Time of Issue: 0750 hours IST
(MORNING)

ALL INDIA WEATHER SUMMARY AND FORECAST BULLETIN

Significant Weather Features:

Weather Systems, Forecast and warning

- ❖ A fresh **Western Disturbance** seen as a cyclonic circulation over West Iran & neighbourhood in lower to upper tropospheric levels. It is likely to move gradually eastwards and impact **States of Western Himalayan region** during next 10-12th March. Under its influence;
 - ✓ **Fairly widespread to widespread light/moderate rainfall/snowfall accompanied with thunderstorm & lightning** over Jammu-Kashmir-Ladakh-Gilgit-Baltistan-Muzaffarabad during 10th-15th March; **Scattered to fairly widespread light/moderate rainfall/snowfall accompanied with thunderstorm & lightning** over Himachal Pradesh and **isolated to scattered light/moderate rainfall/snowfall** accompanied with thunderstorm & lightning over Uttarakhand during the same period.
 - ✓ **Isolated heavy rainfall/snowfall very likely over** Jammu-Kashmir-Ladakh-Gilgit-Baltistan-Muzaffarabad on 10th March.
 - ✓ Isolated light/moderate rainfall **accompanied with thunderstorm & lightning** likely over Punjab, Haryana and West Uttar Pradesh on 12th & 13th; West Rajasthan during 13th-15th and over East Rajasthan on 15th March.
- ❖ A **cyclonic circulation** lies over Northeast Bangladesh in lower tropospheric levels. Under its influence,
 - ✓ **Scattered to fairly widespread** light/moderate rainfall/snowfall accompanied with thunderstorm and lightning over Arunachal Pradesh, Assam & Meghalaya and Nagaland, Manipur, Mizoram & Tripura during 11th-15th March.
 - ✓ **Isolated Heavy rainfall likely over Arunachal Pradesh during 11th-13th March.**
 - ✓ Isolated light/moderate rainfall/snowfall also likely over Sikkim during next 7 days.
- ❖ Under the influence of easterly wave activity,
 - ✓ **Scattered to fairly widespread** light/moderate rainfall accompanied with **thunderstorm & lightning** likely over Tamilnadu, Puducherry & Karaikal on 10th-11th and Lakshadweep on 11th & 12th; Isolated to **Scattered** light/moderate rainfall accompanied with **thunderstorm & lightning** likely over Kerala & Mahe, coastal & South Interior Karnataka during 11th-13th March.
 - ✓ **Isolated heavy to very heavy rainfall likely over south Tamil Nadu on 11th and heavy rainfall over Kerala & Mahe on 11th & 12th March.**
 - ✓ Scattered to Fairly widespread light to moderate rainfall likely over Andaman & Nicobar Islands during next 7 days.

Temperature Forecast: Maximum temperature:

- ❖ Gradual rise in maximum temperatures by 3-4°C likely over plains of Northwest India during next 4 days and fall by 2-3°C thereafter.
- ❖ Gradual rise in maximum temperatures by 2-3°C likely over Central India & Maharashtra and by 3-5°C over East India during next 5 days.
- ❖ Gradual rise in maximum temperatures by 2-3°C likely over Gujarat State during next 4 days and fall by 2-3°C thereafter.
- ❖ Gradual rise in maximum temperatures by 2-3°C likely over north Peninsular India during next 3 days and no significant change thereafter.
- ❖ No significant change in maximum temperatures likely over northeast India during next 2 days and fall by 2-3°C during subsequent 3 days.
- ❖ No significant change in maximum temperatures likely over rest parts of the country.

Hot & Humid weather warning:

- ❖ **Hot and humid weather** very likely to prevail over Konkan & Goa on 10th & 11th and over Coastal Karnataka on 10th March.

Heat Wave Warning:

- ❖ **Heat wave** very likely to prevail over Gujarat State during 10th-12th and over Konkan & Goa on 10th March.

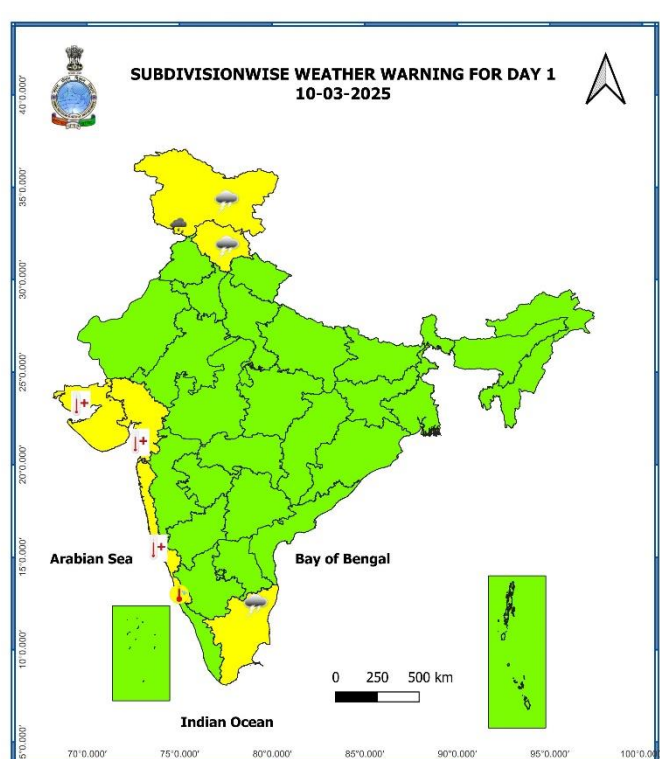
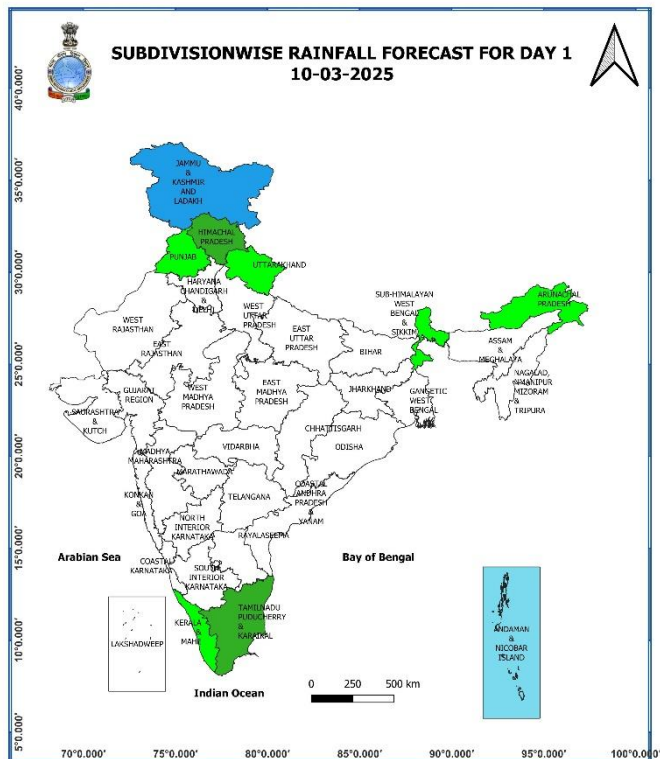
Main Weather Observations:

- ❖ **Rainfall distribution** (from 0830 hours IST to 1730 hours IST of yesterday): **at many places** over Andaman & Nicobar Islands.
- ❖ **Significant amount of rainfall** (from 0830 hours IST to 1730 hours IST of yesterday) (in cm): **Andaman & Nicobar Islands: Hut Bay-1**
- ❖ **Minimum Temperature Departures (as on 09-03-2025):** Minimum temperatures were **appreciably above normal (3.1°C to 5.0°C)** at a few places over Gujarat state and Andaman & Nicobar Islands; **above normal (1.6°C to 3.0°C)** at a few places over Kerala & Mahe; at isolated places over Jammu-Kashmir-Ladakh-Gilgit-Baltistan-Muzaffarabad, Himachal Pradesh, Rajasthan, West Madhya Pradesh, Konkan & Goa, Tamil Nadu, Puducherry & Karaikal and Lakshadweep. These were **appreciably below normal (-3.1°C -5.0°C)** at isolated places over East Madhya Pradesh, Telangana and Gangetic West Bengal; **below normal (-3.0°C to -1.6°C)** at a few places over East Uttar Pradesh; at isolated places over Delhi, Jharkhand, Rayalaseema and near normal over rest parts of the country (**Fig. 4**). Yesterday, the **lowest minimum temperature of 8.9°C** was reported at **Adampur_IAF (Punjab)** over the plains of the country.
- ❖ **Maximum Temperature Departures (as on 09-03-2025):** Maximum temperatures were **Markedly above normal (5.1°C or more)** at many places over Saurashtra & Kutch; at isolated places over Gujarat Region and Rajasthan; **appreciably above normal (3.1°C to 5.0°C)** at a few places over Jammu-Kashmir-Ladakh-Gilgit-Baltistan-Muzaffarabad, Himachal Pradesh; at isolated places over West Madhya Pradesh, Konkan & Goa; **above normal (1.6°C to 3.0°C)** at most places over Punjab, Haryana-Chandigarh-Delhi, West Uttar Pradesh, East Madhya Pradesh, Madhya Maharashtra, Marathwada, Vidarbha, North Interior Karnataka; at a few places over Uttarakhand, Chhattisgarh; at isolated places over East Uttar Pradesh, Jharkhand, Odisha, Telangana. These were **below normal (-3.0°C to -1.6°C)** at isolated places over Sub-Himalayan West Bengal & Sikkim and near normal over rest parts of the country. (**Fig. 2**). Yesterday, the highest **maximum temperature of 41.1°C** was reported at **Rajkot (Saurashtra & Kutch)** over the country.

Meteorological Analysis (Based on 0530 hours IST)

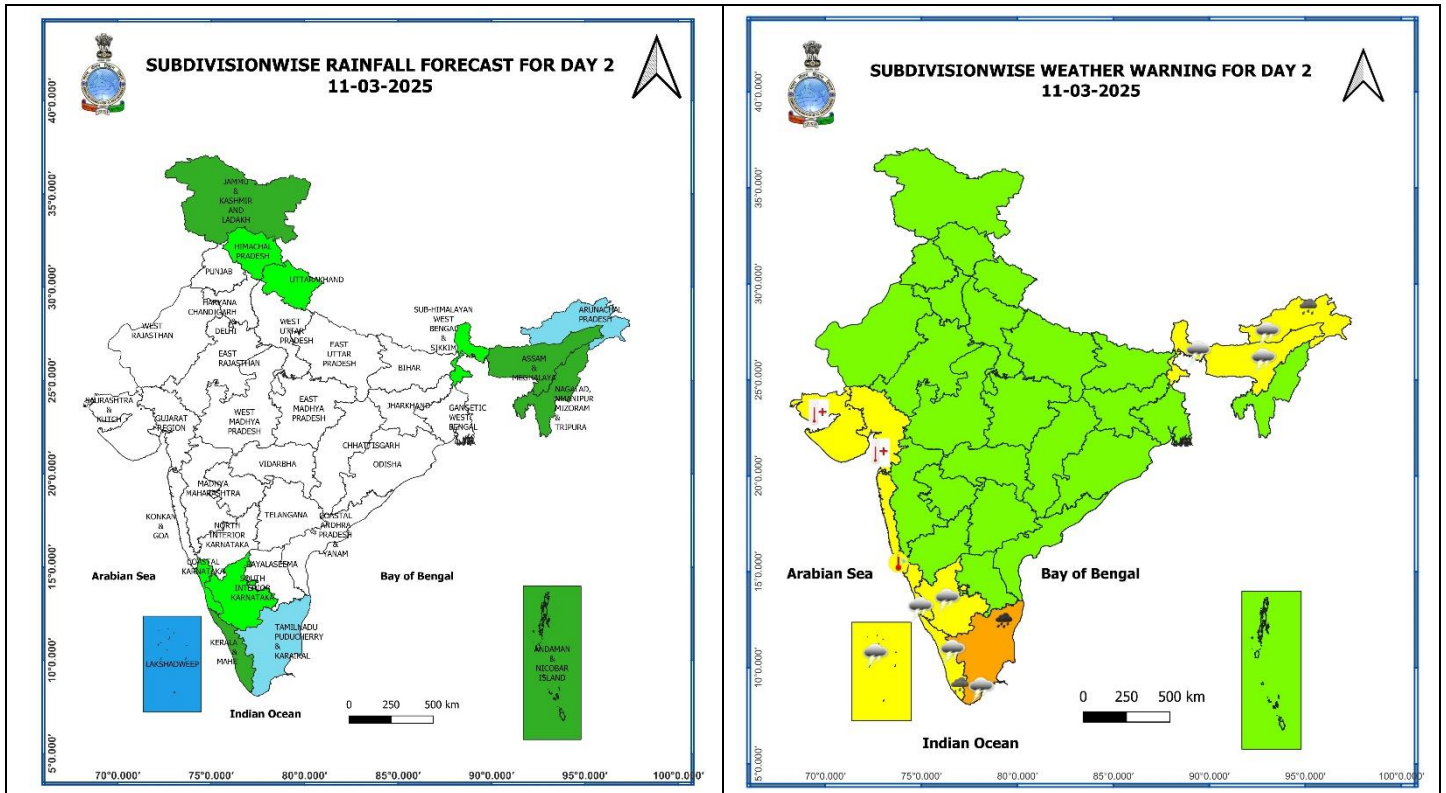
- ❖ The **Western disturbance** as a cyclonic circulation over Iraq now lies over West Iran & neighbourhood between 3.1 & 9.6 km above mean sea level.
- ❖ The **upper air cyclonic circulation** over northeast Equatorial Indian Ocean & adjoining southeast Bay of Bengal persists and now extends upto 1.5 km above mean sea level.
- ❖ The **upper air cyclonic circulation** over northeast Bangladesh & neighbourhood extending upto 1.5 km above mean seal level persists.

Weather Forecast & Warnings for next 7 days (Upto 0830 hours IST of 17th March, 2025)



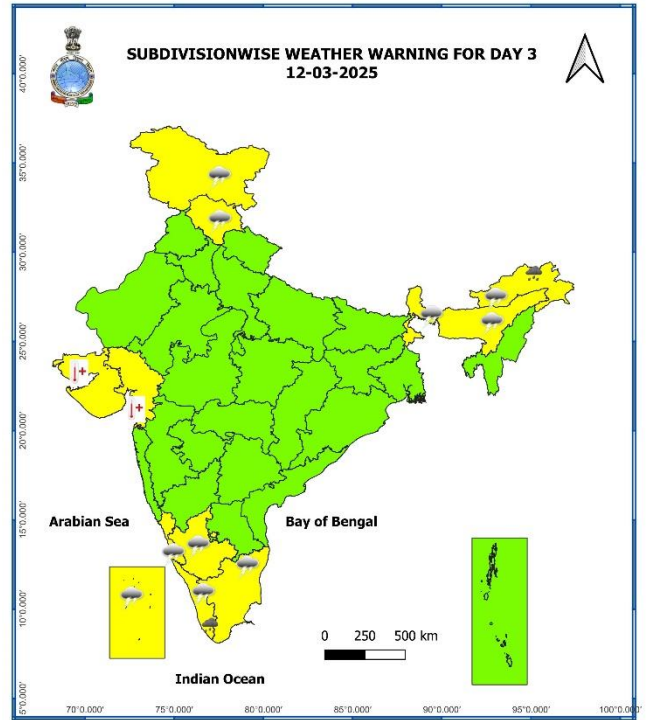
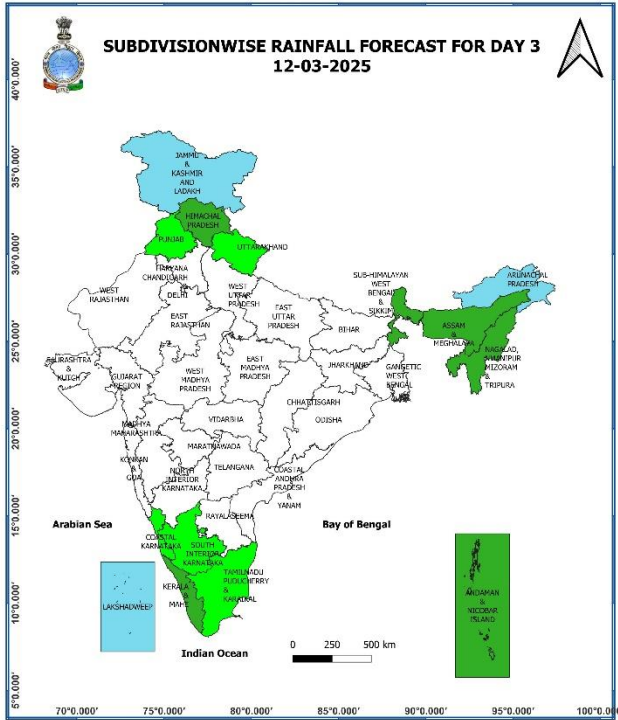
10th March (Day 1):

- ❖ **Heavy rainfall (≥ 7 cm)** likely at isolated places over Jammu-Kashmir-Ladakh-Gilgit-Baltistan-Muzaffarabad.
- ❖ **Thunderstorm accompanied with lightning** very likely at isolated places over Jammu-Kashmir-Ladakh-Gilgit-Baltistan-Muzaffarabad, Himachal Pradesh and Tamil Nadu, Puducherry & Karaikal.
- ❖ **Heat Wave Conditions** very likely at isolated places over Konkan & Goa and Gujarat state.
- ❖ **Hot and Humid conditions** very likely at isolated places over Coastal Karnataka.
- ❖ **Squally weather with wind speed 35 kmph to 45 kmph gusting to 55 kmph** likely to prevail over northeast Equatorial Indian Ocean and adjoining southwest & southeast Bay of Bengal. Fishermen are advised not to venture into these areas.



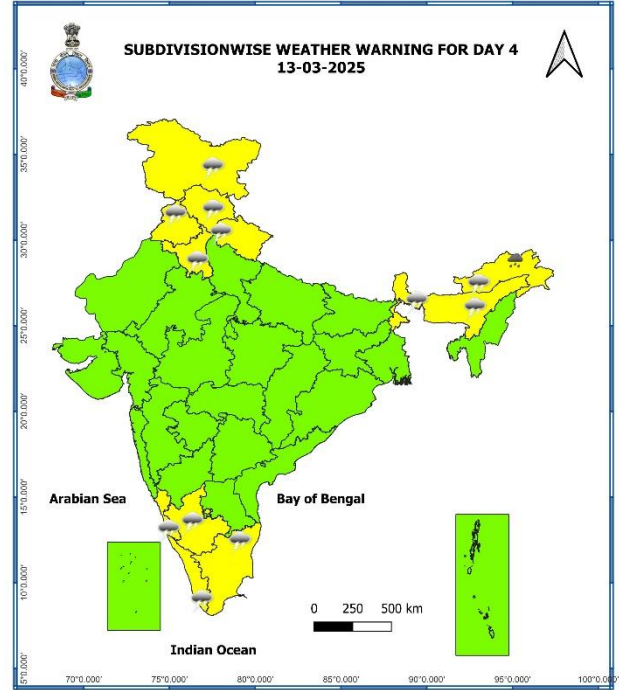
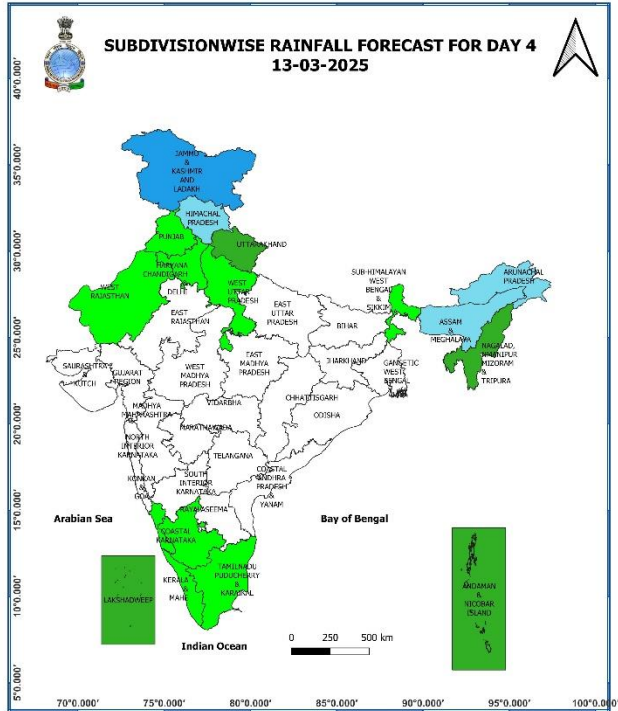
11th March (Day 2):

- ❖ **Heavy to very heavy rainfall (≥ 12 cm)** likely at isolated places over Tamil Nadu, Puducherry & Karaikal; **Heavy rainfall (≥ 7 cm)** likely at isolated places over Arunachal Pradesh and Kerala & Mahe.
- ❖ **Thunderstorm accompanied with lightning** likely at isolated places over Sub-Himalayan West Bengal & Sikkim, Arunachal Pradesh, Assam & Meghalaya, Tamil Nadu, Puducherry & Karaikal, Kerala & Mahe, Coastal Karnataka, South Interior Karnataka and Lakshadweep.
- ❖ **Heat Wave Conditions** likely at isolated places over Gujarat state.
- ❖ **Hot and Humid conditions** likely at isolated places over Konkan & Goa.
- ❖ **Squally weather with wind speed 35 kmph to 45 kmph gusting to 55 kmph** likely to prevail over northeast Equatorial Indian Ocean and adjoining Comorin Area & Gulf of Mannar. Fishermen are advised not to venture into these areas.



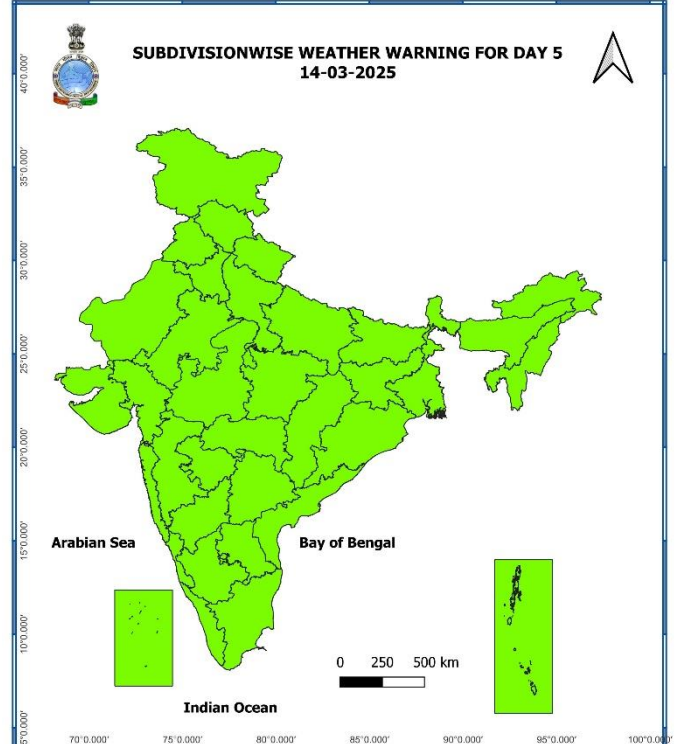
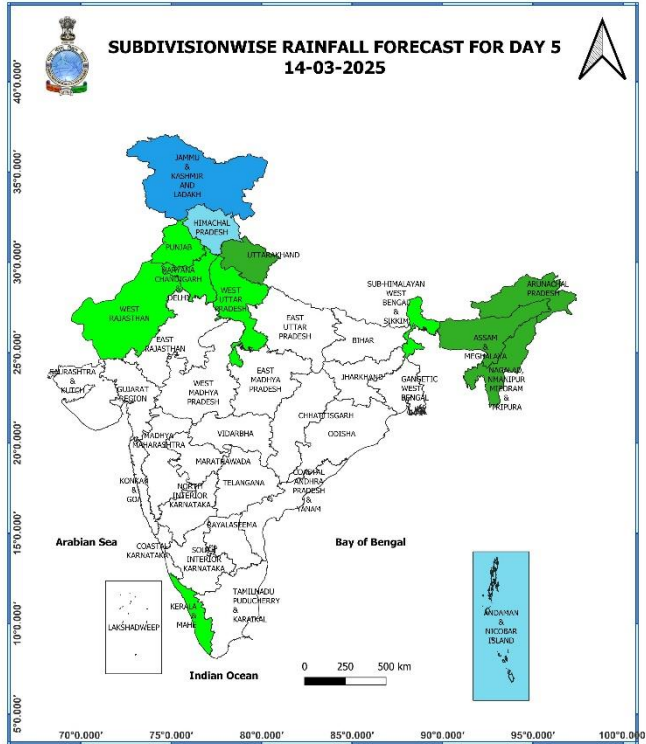
12th March (Day 3):

- ❖ **Heavy rainfall (≥ 7 cm)** likely at isolated places over Arunachal Pradesh and Kerala & Mahe
- ❖ **Thunderstorm accompanied with lightning** likely at isolated places over Jammu-Kashmir-Ladakh-Gilgit-Baltistan-Muzaffarabad, Himachal Pradesh, Sub-Himalayan West Bengal & Sikkim, Arunachal Pradesh, Assam & Meghalaya, Tamil Nadu, Puducherry & Karaikal, Kerala & Mahe, Coastal Karnataka, South Interior Karnataka and Lakshadweep.
- ❖ **Heat Wave Conditions** likely at isolated places over Gujarat state.



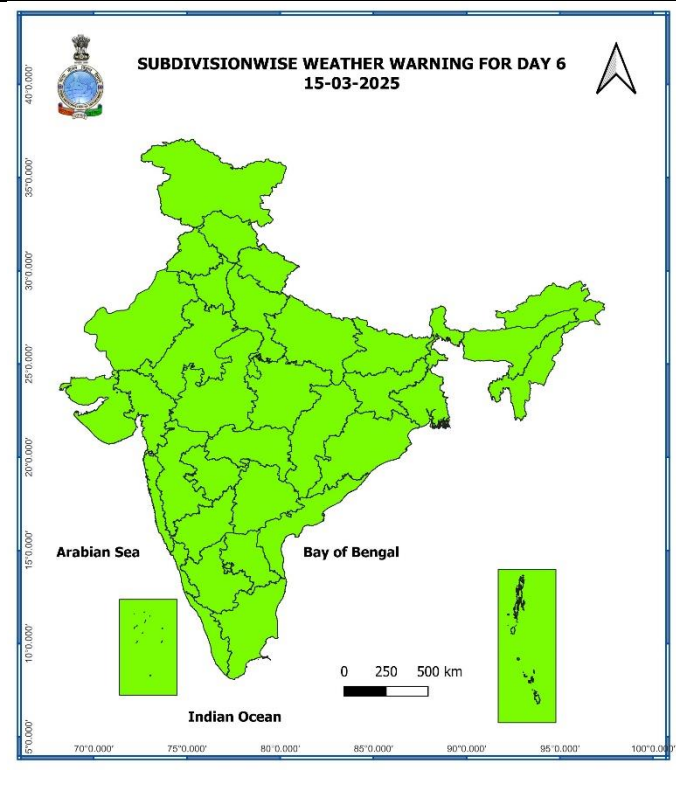
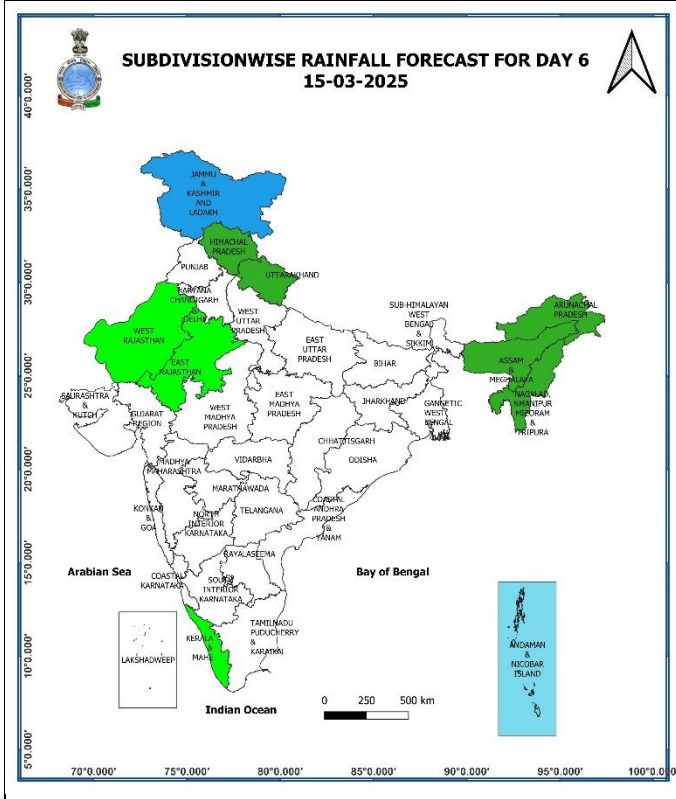
13th March (Day 4):

- ❖ **Heavy rainfall (≥ 7 cm)** likely at isolated places over Arunachal Pradesh.
- ❖ **Thunderstorm accompanied with lightning** likely at isolated places over Jammu-Kashmir-Ladakh-Gilgit-Baltistan-Muzaffarabad, Himachal Pradesh, Uttarakhand, Punjab, Haryana-Chandigarh-Delhi, Sub-Himalayan West Bengal & Sikkim, Arunachal Pradesh, Assam & Meghalaya, Tamil Nadu, Puducherry & Karaikal, Kerala & Mahe, Coastal Karnataka and South Interior Karnataka.



14th March (Day 5):

❖ **No Weather Warning.**



15th March (Day 6):

❖ **No Weather Warning.**

* Red colour warning does not mean "Red Alert", Red colour warning means "Take Action".
Forecast and Warning for any day is valid from 0830 hours IST of day till 0830 hours IST of next day.
For more details, kindly visit <https://mausam.imd.gov.in> or contact: 011-2434-4599
(Service to the Nation since 1875)

Fig. 1: Maximum Temperatures

Fig. 2: Departure of Maximum Temperatures

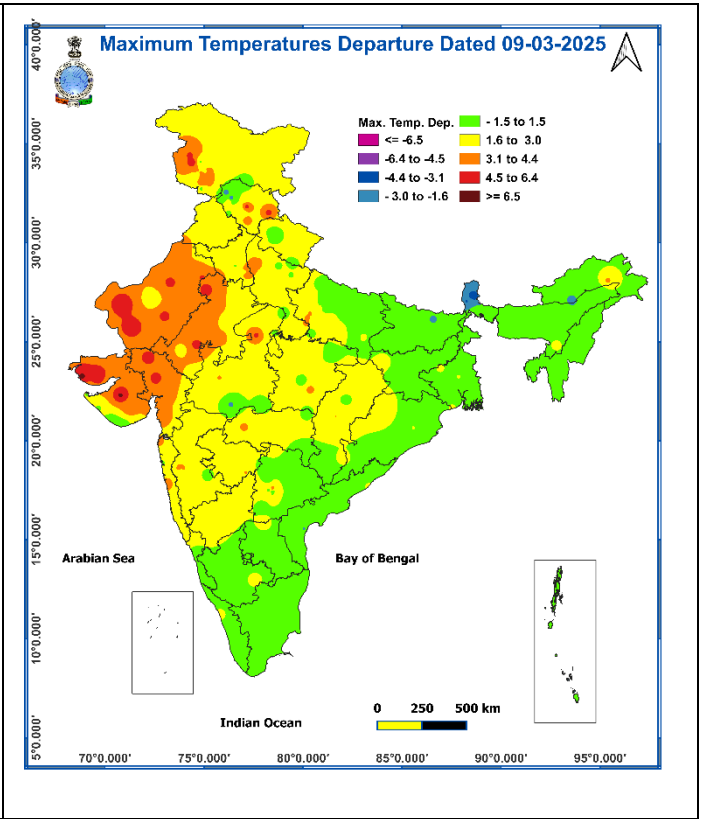
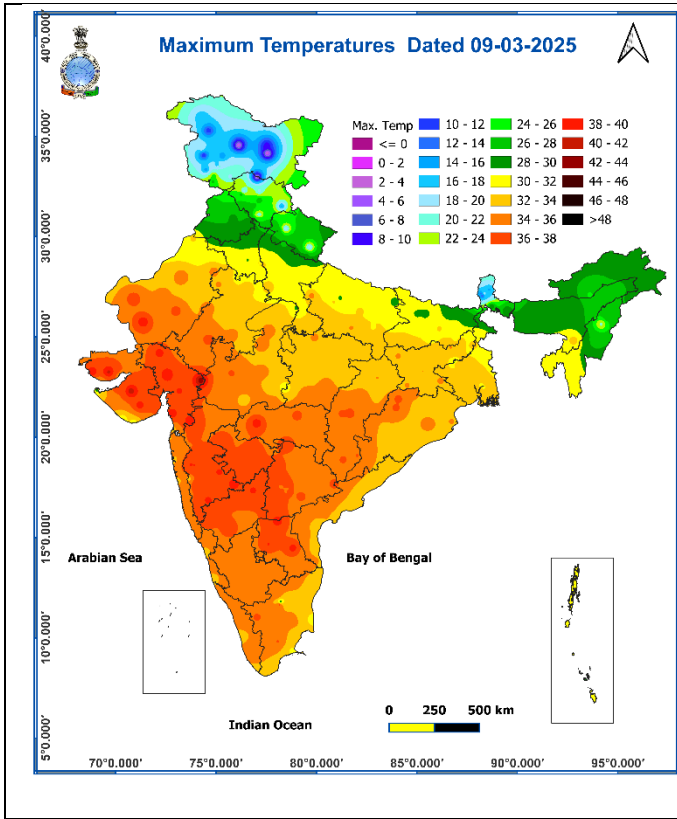
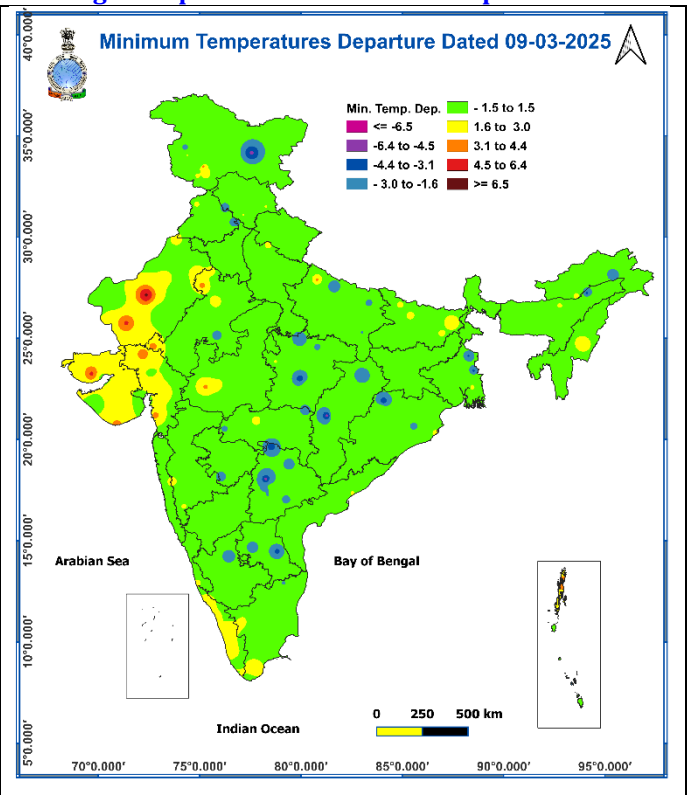
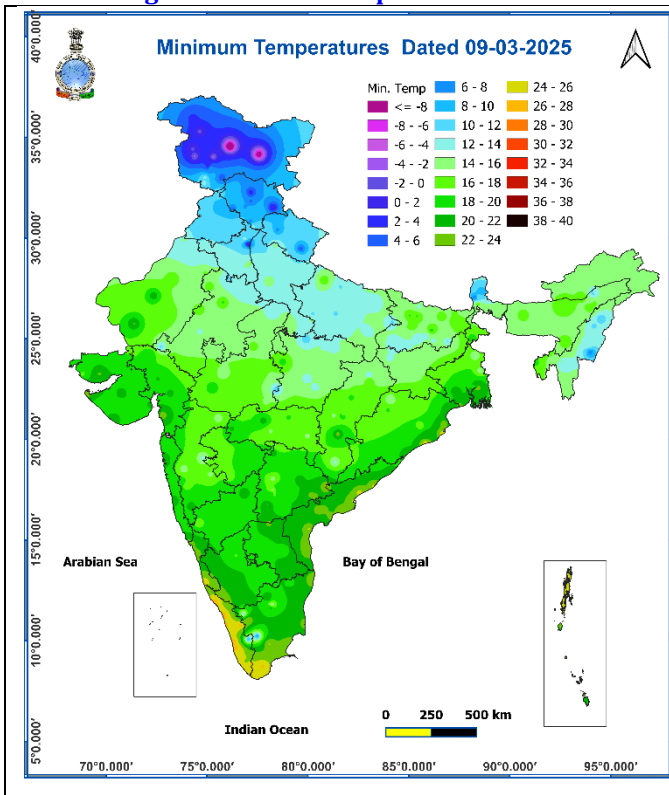


Fig. 3: Minimum Temperatures

Fig. 4: Departure of Minimum Temperatures



Agromet advisories for likely impact of Heat Wave over Gujarat State during next 4 days

- In **Gujarat** State, apply light and frequent irrigation to the standing crops, vegetables and orchards in the evening to protect them from heat wave.
- Keep the harvested produce in safer places or cover the produce with tarpaulin sheets in the fields.
- Provide mechanical support to horticultural crops and staking to vegetables to avoid lodging.

Livestock

- Store feed and fodder in a safe place to prevent spoilage.
- To reduce the effect of heat wave/high temperature, cover the roof of poultry sheds with grass. Also provide clean, hygienic and plenty of drinking water to animals.

Impact expected and action suggested due Heat Wave conditions over Gujarat State during 10th -12th and over Konkan & Goa on 10th March.

Yellow alert Areas:

- Moderate temperature & heat is tolerable for general public but moderate health concern likely for vulnerable people e.g. infants, elderly, people with chronic diseases.
- Avoid heat exposure.
- Wear lightweight, light colour, loose, cotton clothes.
- Cover your head, use a cloth, hat or umbrella.

Impact & Action Suggested due to heavy rainfall/ snowfall over Jammu-Kashmir-Ladakh-Gilgit-Baltistan-Muzaffarabad on 10th March and very heavy rainfall over south Tamil Nadu on 11th March.

A. Impact Expected

- ❖ Localized Flooding of roads, water logging in low lying areas and closure of underpasses mainly in urban areas of the above region.
- ❖ Occasional reduction in visibility due to heavy rainfall.
- ❖ Disruption of traffic in major cities due to water logging in roads leading to increased travel time.
- ❖ Minor damage to kutcha roads.
- ❖ Possibilities of damage to vulnerable structure.
- ❖ Localized Landslides/Mudslides
- ❖ Damage to horticulture and standing crops in some areas due to inundation.
- ❖ It may lead to riverine flooding in some river catchments (for riverine flooding please visit Web page of CWC).

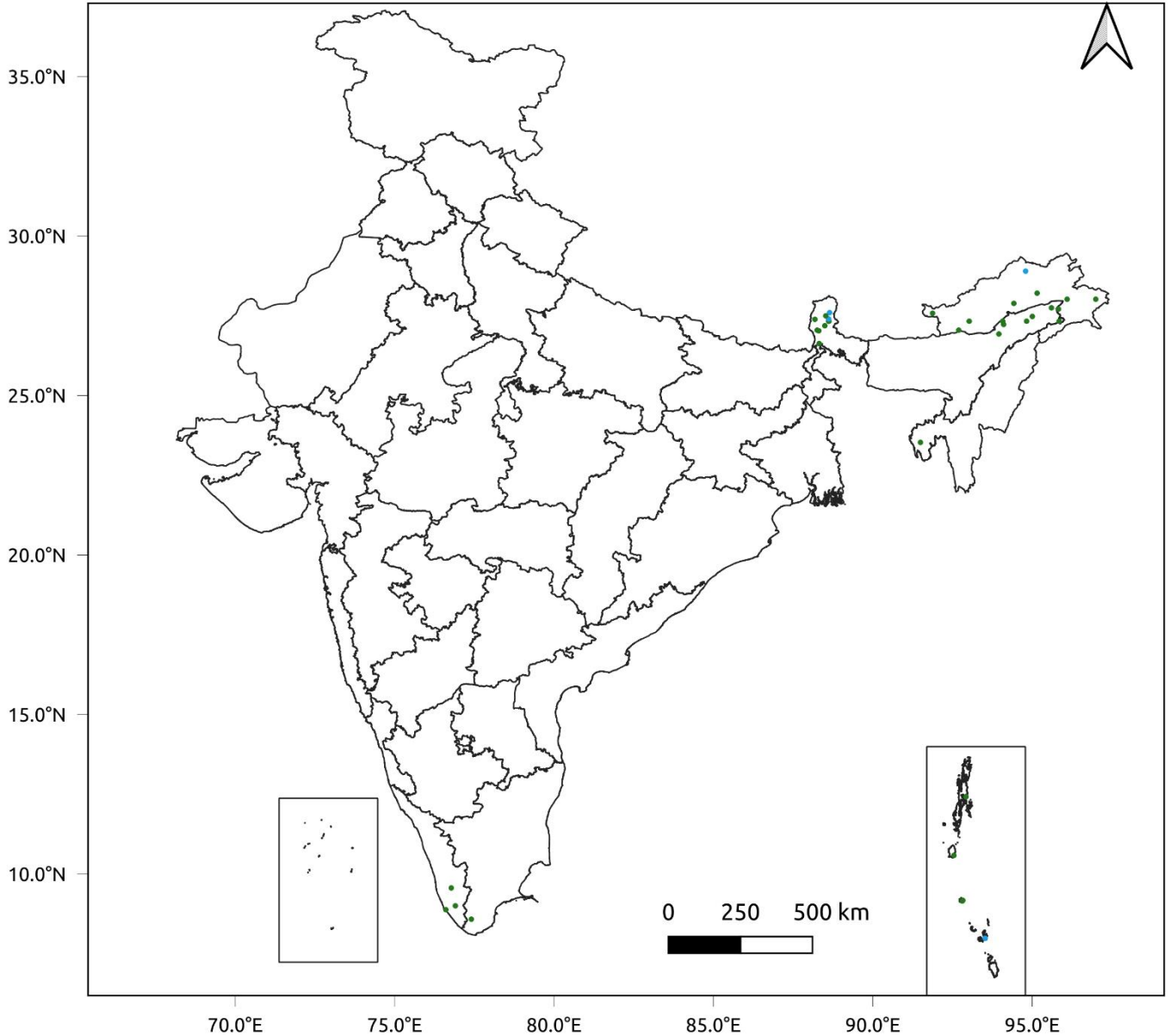
B. Action Suggested

- ❖ Check for traffic congestion on your route before leaving for your destination.
- ❖ Follow any traffic advisories that are issued in this regard.
- ❖ Avoid going to areas that face the water logging problems often.
- ❖ Avoid staying in vulnerable structure.

Fig. 5: Accumulated Rainfall (mm) during past 24 hours



24 Hr cumulative rainfall recorded over different stations during 0830 IST of 8-3-2025 to 0830 IST of 9-3-2025

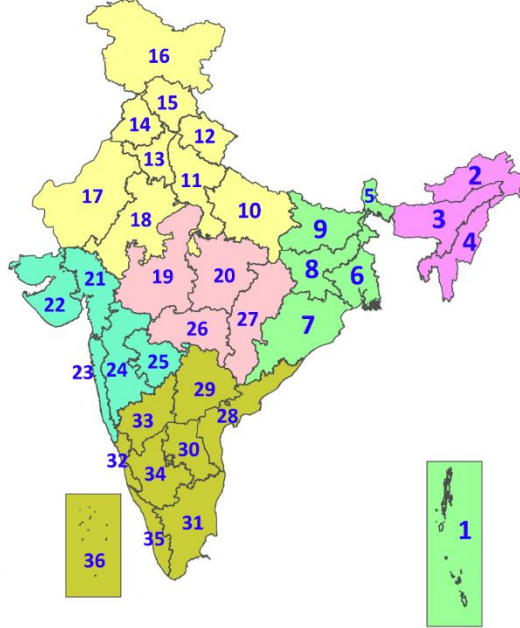


Legends

- Very Light to Light Rainfall (0.1 - 15.5 mm)
- Moderate Rainfall (15.6 - 64.4 mm)
- Heavy Rainfall (64.5 - 115.5 mm)
- Very Heavy Rainfall (115.6 - 204.4 mm)
- Extremely Heavy Rainfall (≥ 204.5 mm)

LEGENDS

1. अंडमान और निकोबार द्वीपसमूह
2. अरुणाचल प्रदेश
3. असम और मेघालय
4. नागालैंड, मणिपुर, मिजोरम और त्रिपुरा
5. उप-हिमालयी पश्चिम बंगाल और सिक्किम
6. गंगीय पश्चिम बंगाल
7. ओडिशा
8. झारखंड
9. बिहार
10. पूर्वी उत्तर प्रदेश
11. पश्चिम उत्तर प्रदेश
12. उत्तराखंड
13. हरियाणा, चंडीगढ़ और दिल्ली
14. पंजाब
15. हिमाचल प्रदेश
16. जम्मू और कश्मीर और लद्दाख
17. पश्चिम राजस्थान
18. पूर्वी राजस्थान
19. पश्चिम मध्य प्रदेश
20. पूर्वी मध्य प्रदेश
21. गुजरात
22. सौराष्ट्र
23. कोंकण और गोवा
24. मध्य महाराष्ट्र
25. मराठवाड़ा
26. विदर्भ
27. छत्तीसगढ़
28. तटीय आंध्र प्रदेश और यनम
29. तेलंगाना
30. रायलसीमा
31. तमिलनाडु, पुडुचेरी और कराईकल
32. तटीय कर्नाटक
33. आंतरिक उत्तरी कर्नाटक
34. आंतरिक दक्षिणी कर्नाटक
35. केरल और माहे
36. लक्षद्वीप



1. Andaman & Nicobar Islands
2. Arunachal Pradesh
3. Assam & Meghalaya
4. Nagaland, Manipur, Mizoram & Tripura
5. Sub-Himalayan West Bengal & Sikkim
6. Gangetic West Bengal
7. Odisha
8. Jharkhand
9. Bihar
10. East Uttar Pradesh
11. West Uttar Pradesh
12. Uttarakhand
13. Haryana, Chandigarh & Delhi
14. Punjab
15. Himachal Pradesh
16. Jammu & Kashmir and Ladakh
17. West Rajasthan
18. East Rajasthan
19. West Madhya Pradesh
20. East Madhya Pradesh
21. Gujarat
22. Saurashtra
23. Konkan & Goa
24. Madhya Maharashtra
25. Marathwada
26. Vidarbha
27. Chhattisgarh
28. Coastal Andhra Pradesh & Yanam
29. Telangana
30. Rayalaseema
31. Tamilnadu, Puducherry & Karaikal
32. Coastal Karnataka
33. North Interior Karnataka
34. South Interior Karnataka
35. Kerala & Mahe
36. Lakshadweep

SPATIAL DISTRIBUTION (% of Stations reporting)

% Stations	Category	% Stations	Category
76-100	Widespread (WS/Most Places)	26-50	Scattered (SCT/A Few Places)
51-75	Fairly Widespread (FWS/Many Places)	1-25	Isolated (ISOL)

- | | | |
|----------------------|----------------------|--------------|
| Fog | Heavy Snow | Cold Wave |
| Heavy Rain | Dust Storm | Cold Day |
| Very Heavy Rain | Heat Wave | Ground Frost |
| Extremely Heavy Rain | Warm Night | |
| Thunder & Lightning | Hot Day | |
| Hailstorm | Hot & Humid | |
| Dust Raising Winds | Strong Surface Winds | |

COLOUR CODED WARNING

No Warning (No Action)
Watch (Be Aware)
Alert (Be Prepared To Take Action)
Warning (Take Action)

Probabilistic Forecast

Terms	Probability of Occurrence (%)
Unlikely	< 25
Likely	25 - 50
Very Likely	50 - 75
Most Likely	> 75

DEFINITION/CRITERIA

Rain/ Snow *	<p>Heavy: 64.5 to 115.5 mm/cm *</p> <p>Very Heavy: 115.6 to 204.4 mm/cm*</p> <p>Extremely Heavy: > 204.4 mm/cm *</p>
Heat Wave	<p>When maximum temperature of a station reaches $\geq 40^\circ\text{C}$ for plains and $\geq 30^\circ\text{C}$ for hilly regions</p> <p>(a) Based on Departure from normal</p> <p>Heat Wave: Maximum Temperature Departure from normal 4.5°C to 6.4°C.</p> <p>Severe Heat Wave: Maximum Temperature Departure from normal $\geq 6.5^\circ\text{C}$</p> <p>(b). Based on Actual maximum temperature</p> <p>Heat Wave: When actual maximum temperature $\geq 45^\circ\text{C}$.</p> <p>Severe Heat Wave: When actual maximum temperature $\geq 47^\circ\text{C}$</p> <p>(c). Criteria for heat wave for coastal stations</p> <p>When maximum temperature departure is $>4.5^\circ\text{C}$ from normal. Heat Wave may be described provided maximum temperature $\geq 37^\circ\text{C}$</p>
Warm Night	<p>When maximum temperature remains 40°C</p> <p>Warm Night: When minimum temperature departure 4.5°C to 6.4°C.</p> <p>Severe Warm Night: When minimum temperature departure $>6.4^\circ\text{C}$.</p>
Cold Wave	<p>When minimum temperature of a station $\leq 10^\circ\text{C}$ for plains and $\leq 0^\circ\text{C}$ for hilly regions.</p> <p>(a). Based on departure</p> <p>Cold Wave: Minimum Temperature Departure from normal -4.5°C to -6.4°C.</p> <p>Severe Cold Wave: Minimum Temperature Departure from normal $\leq -6.5^\circ\text{C}$</p> <p>(b) Based on actual Minimum Temperature (for Plains only)</p> <p>Cold Wave : When Minimum Temperature is $\leq 4.0^\circ\text{C}$</p> <p>Severe Cold Wave: When Minimum Temperature is $\leq 2.0^\circ\text{C}$</p> <p>(c) For Coastal Stations</p> <p>When Minimum Temperature departure is $\leq -4.5^\circ\text{C}$ & actual Minimum Temperature is $\leq 15^\circ\text{C}$</p>
Cold Day	<p>When minimum temperature of a station $\leq 10^\circ\text{C}$ for plains and $\leq 0^\circ\text{C}$ for hilly regions</p> <p>Based on departure</p> <p>Cold Day: Maximum Temperature Departure from normal -4.5°C to -6.4°C.</p> <p>Severe Cold Day: Maximum Temperature Departure from normal $\leq -6.5^\circ\text{C}$</p>
Fog	<p>Phenomenon of small droplets suspended in air and the horizontal visibility $< 1\text{km}$</p> <p>Moderate Fog: When the visibility between 500-200 metres</p> <p>Dense Fog: when the visibility between 50- 200 metres</p> <p>Very Dense Fog: when the visibility < 50 metres</p>
Thunderstorm	Sudden electrical discharges manifested by a flash of light (Lightning) and a sharp rumbling sound (thunder)
Dust/Sand Storm	An ensemble of particles of dust or sand energetically lifted to great heights by a strong and turbulent wind.
Frost	Ice deposits on ground Air temperature $\leq 4^\circ\text{C}$ (over Plains)
Squall	A strong wind that rises suddenly, lasts for atleast 1 minute. Moderate: Wind speed 52-61 kmph Severe: Wind speed 62-87 kmph Very Severe: Wind speed >87 kmph
Sea State	Effect of various waves in the sea over specific area Rough to very rough: Wind speed 41-62 kmph (22-33 knots) & Wave height 2.5-6 metre High to very high: Wind speed 63-117 kmph (34-63 knots) & Wave height 6-14 metre Phenomenal: Wind speed >117 kmph (>63 knots) & Wave height >14 metre
Cyclone	Cyclonic Storm: Wind speed 62-87 kmph (34-47 knots) Severe Cyclonic Storm: Wind speed 88-117 kmph (48-63 knots) Very Severe Cyclonic Storm: Wind speed 118-165 kmph (64 - 89 knots) Extremely Severe Cyclonic Storm: Wind speed 166-220 kmph (90 -119 knots) Super Cyclone Strom: Wind speed >220 kmph (>119 knots)