

ALL INDIA WEATHER SUMMARY AND FORECAST BULLETIN

Significant Weather Features

Weather Forecast and Warnings

East & Central India:

- Light/moderate rainfall at most/many places accompanied with **thunderstorm, lightning & gusty winds speed reaching 40-50 kmph** likely over Andaman & Nicobar Islands on 18th; Madhya Pradesh, Vidarbha, Chhattisgarh, Gangetic West Bengal, Bihar, Jharkhand, Odisha during 18th-21st with **Thundersquall (wind speed reaching 50-60 kmph gusting to 70 kmph)** very likely at isolated places over Madhya Pradesh on 18th June.
- Isolated **heavy rainfall** also likely over West Bengal & Sikkim on 18th & 19th; Bihar, Jharkhand, Odisha, Chhattisgarh, Madhya Pradesh during 18th-21st June with **very heavy rainfall** over East Madhya Pradesh on 20th & 21st; Chhattisgarh during 18th-20th; Bihar on 18th & 19th; Odisha on 19th June.
- Extremely heavy rainfall (>20 cm/24 hours) likely at isolated places over Gangetic West Bengal, Odisha on 18th; Jharkhand on 18th & 19th June.

West India:

- Light/moderate rainfall at most/many places accompanied with **thunderstorm, lightning & gusty winds speed reaching 30-40 kmph** likely over Gujarat State, Konkan & Goa, Madhya Maharashtra, Marathwada during 18th -20th June.
- Isolated **heavy to very heavy rainfall** likely over Konkan & Goa, Madhya Maharashtra, Gujarat Region during 18th-23rd; Saurashtra & Kutch on 18th & 19th and 22nd & 23rd **June**.

South Peninsular India:

- Light/moderate rainfall at many/some places accompanied with isolated **thunderstorm, lightning & gusty winds speed reaching 40-50 kmph** over Tamil Nadu, Puducherry & Karaikal, Kerala & Mahe, Lakshadweep, Karnataka on 18th & 19th; Coastal Andhra Pradesh & Yanam, Rayalaseema, Telangana during 18th-20th June. Isolated **heavy rainfall** likely over Tamil Nadu on 18th; Kerala, Coastal Karnataka, South Interior Karnataka on 18th & 19th June.
- **Strong surface winds** (speed reaching 40-60 kmph) very likely over Kerala & Mahe, Lakshadweep, Karnataka on 18th; Rayalaseema, Telangana and Coastal Andhra Pradesh & Yanam during 18th-20th June.

Northeast India:

- Light/moderate rainfall at many/most places accompanied with **thunderstorm, lightning and isolated heavy to very heavy rainfall** likely to continue over Northeast India during next 7 days with **extremely heavy rainfall** over Meghalaya on 18th & 19th June.

Northwest India:

- Light/moderate rainfall at some/many places accompanied with **thunderstorm, lightning & gusty winds speed reaching 40-50 kmph** likely over Northwest India during 18th-23rd June.
- Isolated **heavy rainfall** likely over Uttarakhand, Uttar Pradesh, East Rajasthan during 18th-23rd; Jammu-Kashmir-Ladakh-Gilgit-Baltistan-Muzaffarabad on 22nd; Himachal Pradesh during 20th-22nd; Punjab, Haryana on during 20th-22nd; West Uttar Pradesh during 19th-22nd with **very heavy rainfall** on East Uttar Pradesh on 19th & 20th; West Uttar Pradesh on 20th & 21st June.

Maximum Temperature Forecast:

- No significant change in maximum temperatures likely over most parts of the country.

Main Weather Observations:

- ❖ **Rainfall distribution** (from 0830 hours IST to 1730 hours IST of yesterday): **at most places** over Konkan & Goa , East Rajasthan, Sub-Himalayan West Bengal & Sikkim, Saurashtra & Kutch, Jharkhand, Gangetic West Bengal, Coastal Karnataka, Kerala & Mahe, Haryana Chandigarh & Delhi, Himachal Pradesh and Lakshadweep ; **at many places** over Odisha, West Uttar Pradesh, Madhya Maharashtra , Uttarakhand, Assam & Meghalaya, Tamilnadu Puducherry & Karaikal, Andaman & Nicobar Islands, Jammu & Kashmir and Ladakh, East Madhya Pradesh, Arunachal Pradesh, Bihar, Punjab, East Uttar Pradesh, Nagaland, Manipur, Mizoram & Tripura, Gujarat Region, North Interior Karnataka, West Madhya Pradesh, South Interior Karnataka, Rayalaseema, Coastal Andhra Pradesh & Yanam, Chhattisgarh, Vidarbha and West Rajasthan; **Dry** over rest of the country.
- ❖ **Significant rainfall recorded(in cm)** (from 0830 hours IST to 1730 hours IST of yesterday): **Saurashtra & kutch:** Kandla AP (dist Kachchh) 10, Bhuj (dist Kachchh) 4; **Gangetic west Bengal:** Burdwan (dist Purba Bardhaman) 6, Asansol (dist Paschim Bardhaman) 3; **East Rajasthan:** Pilani (dist Jhunjhunu) 5, Jaipur (dist Jaipur) 4; **West Rajasthan:** Churu (dist Churu) 5; **Himachal Pradesh:** Sundernagar (dist Mandi) 5; **Haryana Chandigarh & Delhi:** New Delhi (palam) AP (dist South West Delhi) 4, Hissar (dist Hissar) 3; **Kerala & Mahe:** Kozhikode (calicut) (dist Kozhikode) 4; **West Uttar Pradesh:** Agra (dist Agra) 3.
- ❖ **Heavy Rainfall observed** (from 0830 hours IST to 1730 hours IST of yesterday): **Heavy rain** at isolated places over Saurashtra & Kutch
- ❖ **Minimum Temperature Departures (as on 17-06-2025):** **markedly above normal (> 5.1°C)** at few places over Assam & Meghalaya and East Madhya Pradesh; at isolated places over Sub Himalayan West Bengal & Sikkim, Bihar, East Uttar Pradesh, Himachal Pradesh, Jammu-KashmirLadakh-Gilgit-Baltistan-Muzaffarabad and West Madhya Pradesh. **appreciably above normal (3.1°C to 5.0°C)** at isolated places over Andaman & Nicobar Islands, Jharkhand, Haryana-Chandigarh-Delhi, West Rajasthan and Saurashtra & Kutch. **above normal (1.6°C to 3.0°C)** at few places over Nagaland, Manipur, Mizoram & Tripura, West Uttar Pradesh and Vidarbha; at isolated places over Gangetic West Bengal, Odisha, Uttarakhand, Punjab, Gujarat Region, Konkan & Goa, Madhya Maharashtra, Telangana, Rayalaseema and Tamil Nadu, Puducherry & Karaikal. **near normal(-1.5°C to 1.5°C)** at many places over Chhattisgarh, Kerala & Mahe and Lakshadweep; at most places over Arunachal Pradesh, Marathwada, Coastal Andhra Pradesh & Yanam, Coastal Karnataka, North Interior Karnataka and South Interior Karnataka; at isolated places over East Rajasthan. **Yesterday lowest minimum temperature** of 18.8°C was reported at MATHERAN (MAHARASHTRA) over the Plains of India.
- ❖ **Maximum Temperature Departures (as on 17-06-2025):** **markedly above normal(> 5.1°C)** at few places over Arunachal Pradesh; at isolated places over Jammu-KashmirLadakh-Gilgit-Baltistan-Muzaffarabad. **appreciably above normal(3.1°C to 5.0°C)** at isolated places over Assam & Meghalaya, West Uttar Pradesh and Tamil Nadu, Puducherry & Karaikal. **above normal(1.6°C to 3.0°C)** at few places over Bihar; at isolated places over Nagaland, Manipur, Mizoram & Tripura, Sub Himalayan West Bengal & Sikkim, West Madhya Pradesh, Konkan & Goa, Vidarbha and Chhattisgarh. **near normal(-1.5°C to 1.5°C)** at many places over Madhya Maharashtra, Marathwada and Coastal Andhra Pradesh & Yanam; at most places over East Uttar Pradesh, Uttarakhand, Telangana, Rayalaseema and Lakshadweep; at few places over Andaman & Nicobar Islands, West Rajasthan, East Madhya Pradesh, Coastal Karnataka and Kerala & Mahe; at isolated places over Gangetic West Bengal, Odisha and North Interior Karnataka. **Yesterday highest maximum temperature** of 42.8°C was reported at Orai (Uttar Pradesh).

*Red color warning does not mean "Red Alert" Red color warning means "Take Action"

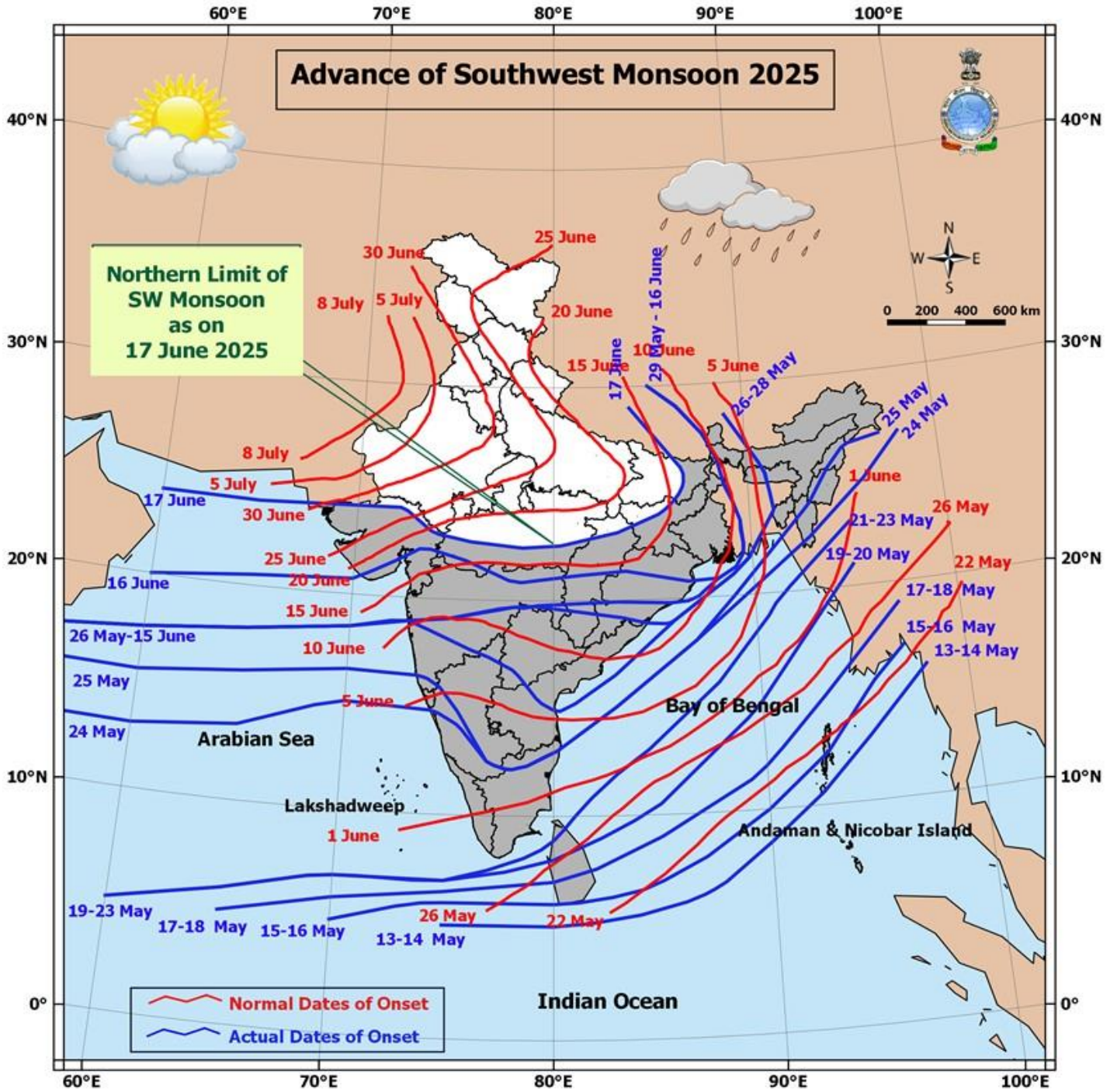
Forecast and warning for any day is valid from 0830 hours IST of day till 0830 hours IST of next day

For more details kindly visit <https://mausam.imd.gov.in> or contact 011-2434-4599

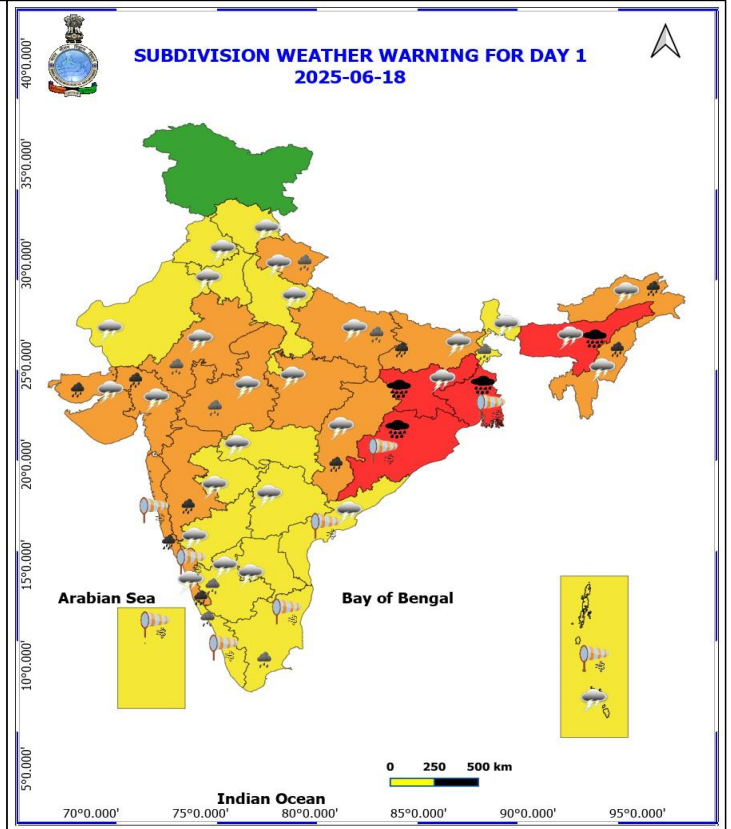
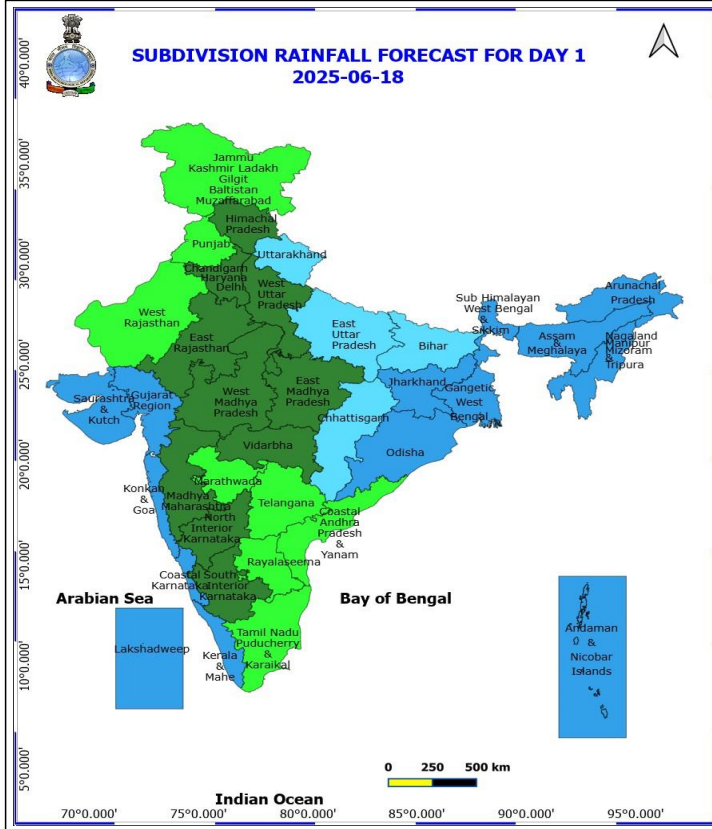
(Service to the nation since 1875)

Meteorological Analysis (Based on 0530 hours IST)

- The Northern Limit of Monsoon continues to pass through 24.0°N/60°E, 24.0°N/65°E, Deesa, Indore, Panchmarhi, Mandla, Ambikapur, Hazaribagh, Supaul and 29.0°N/84.0°E.
- Conditions are favourable for further advance of Southwest monsoon over remaining parts of North Arabian Sea & Gujarat; some parts of Rajasthan; some more parts of Madhya Pradesh; remaining parts of Chhattisgarh, Jharkhand & Bihar and some parts of East Uttar Pradesh during next 2 days.
- The **low pressure area** over Southwest Bangladesh and adjoining Gangetic West Bengal moved west-northwestwards and became a **well marked low pressure area** & lay over Gangetic West Bengal & neighbourhood at 0530 hrs IST of today, the 18th June 2025. The associated upper air cyclonic circulation extends upto 7.6 km above mean sea level tilting southwards with height. It is likely to move slowly northwestwards during next 24 hours.
- The **low pressure area** over north Gujarat Region & neighbourhood lay over southeast Rajasthan & neighbourhood at 0530 hrs IST of today, the 18th June 2025. The associated upper air cyclonic circulation extends upto 5.8 km above mean sea level tilting southwards with height.
- The **trough** now runs form cyclonic circulation associated with low pressure area over north Gujarat region & neighbourhood to Jharkhand across Madhya Pradesh & north Chhattisgarh at 0.9 km above mean sea level.
- The **Western Disturbance** as a trough in middle tropospheric westerlies with its axis at 5.8 km above mean sea level roughly along Long. 72°E to the north of Lat. 30°N persists.
- The **upper air cyclonic circulation** over northeast Assam & neighbourhood extending upto 1.5 km above mean sea level persists.



*Red color warning does not mean "Red Alert" Red color warning means "Take Action"
Forecast and warning for any day is valid from 0830 hours IST of day till 0830 hours IST of next day
For more details kindly visit <https://mausam.imd.gov.in> or contact 011-2434-4599
(Service to the nation since 1875)



18 June (Day 1)

- ❖ **Heavy to Very Heavy Rainfall with isolated Extremely Heavy Rainfall** very likely at isolated places over Assam & Meghalaya, Gangetic West Bengal, Jharkhand and Odisha.
- ❖ **Heavy to Very Heavy Rainfall** very likely at isolated places over Arunachal Pradesh, Bihar, Chhattisgarh, Coastal Karnataka, Gujarat State, Konkan & Goa, Madhya Maharashtra and Nagaland, Manipur, Mizoram and Tripura.
- ❖ **Heavy Rainfall** very likely at isolated places over East Rajasthan, East Uttar Pradesh, Kerala & Mahe, South Interior Karnataka, Sub Himalayan West Bengal & Sikkim, Tamil Nadu Puducherry & Karaikal, Uttarakhand and West Madhya Pradesh.
- ❖ **Thundersquall with wind speed reaching(50-60kmph)** very likely at isolated places over Madhya Pradesh.
- ❖ **Thunderstorm accompanied with lightning & gusty winds(40-50kmph)** very likely at isolated places over Andaman & Nicobar Islands, Andhra Pradesh, Bihar, Jharkhand, Nagaland, Manipur, Mizoram and Tripura, North Interior Karnataka, Rajasthan, Uttar Pradesh and Uttarakhand.
- ❖ **Thunderstorm accompanied with lightning & gusty winds(30-40kmph)** very likely at isolated places over Coastal Karnataka, Haryana, Chandigarh & Delhi, Himachal Pradesh, Marathwada, Punjab, South Interior Karnataka, Sub Himalayan West Bengal & Sikkim and Telangana.
- ❖ **Thunderstorm accompanied with Lightning** very likely at isolated places over Arunachal Pradesh, Assam & Meghalaya, Chhattisgarh, Gujarat State and Vidarbha.
- ❖ **Strong Surface Winds** very likely at isolated places over Andaman & Nicobar Islands, Coastal Andhra Pradesh, Coastal Karnataka, Gangetic West Bengal, Kerala & Mahe, Konkan & Goa, Lakshadweep, Odisha and Tamil Nadu Puducherry & Karaikal.

***Red color warning does not mean "Red Alert" Red color warning means "Take Action"**

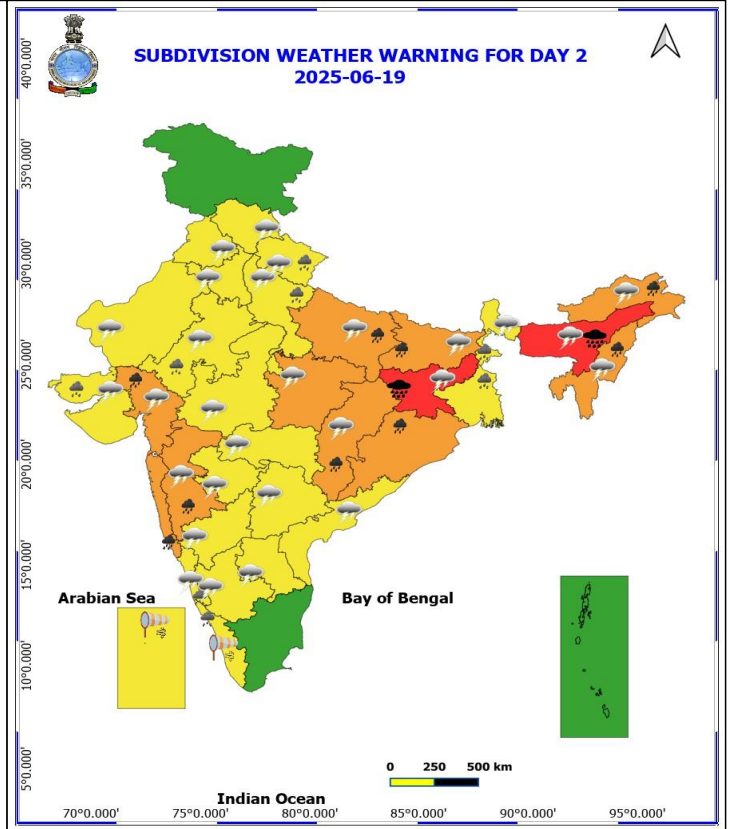
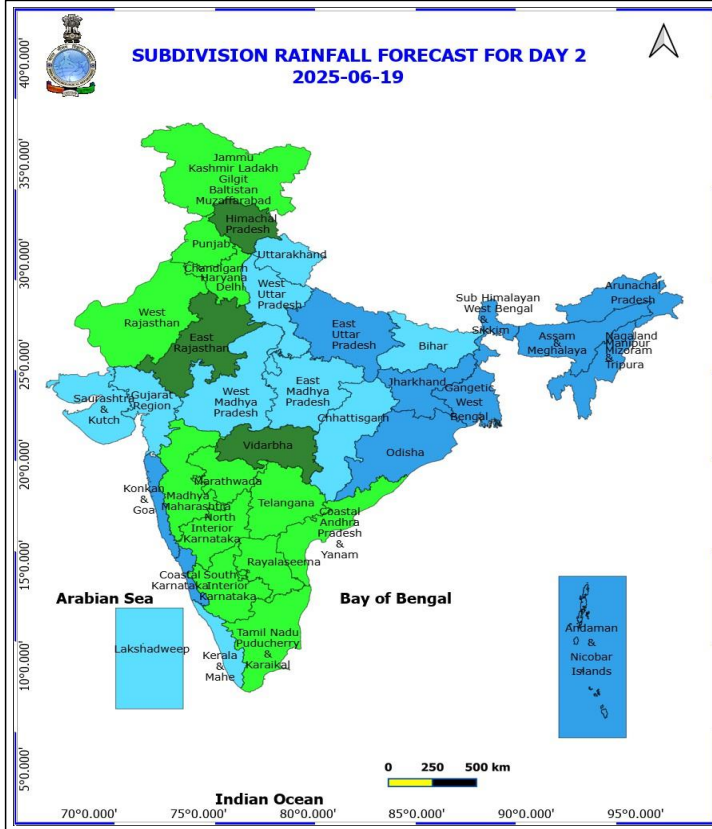
Forecast and warning for any day is valid from 0830 hours IST of day till 0830 hours IST of next day

For more details kindly visit <https://mausam.imd.gov.in> or contact 011-2434-4599

(Service to the nation since 1875)



❖ **Squally wind with speed 45 kmph to 55 kmph gusting to 65 kmph** likely to prevail along and off Somalia, Oman & adjoining Yemen coasts, along and off Gujarat coast, most parts of westcentral Arabian Sea & adjoining southwest Arabian Sea, many parts of eastcentral Arabian Sea. **Squally weather with wind speed 40 - 50 kmph gusting to 60 kmph** likely to prevail along and off Konkan, Goa, Karnataka, Kerala, north Tamil Nadu, Andhra Pradesh, Odisha, West Bengal coasts, over southeast Arabian Sea, most parts of southwest Arabian sea, over many parts of northeast Arabian Sea, over Lakshadweep, Maldives, Comorin areas, over central Bay of Bengal, over north Bay of Bengal, and over north Andaman Sea. **Squally weather with wind speed 45-55 kmph gusting to 65 kmph** likely to prevail along and off Gujarat coast, southern parts of northeast Arabian Sea, many parts of eastcentral & westcentral Arabian Sea, many parts of central Bay of Bengal, Gulf of Mannar.



19 June (Day 2)

- ❖ **Heavy to Very Heavy Rainfall with isolated Extremely Heavy Rainfall** very likely at isolated places over Assam & Meghalaya and Jharkhand.
- ❖ **Heavy to Very Heavy Rainfall** very likely at isolated places over Arunachal Pradesh, Bihar, Chhattisgarh, East Uttar Pradesh, Gujarat Region, Konkan & Goa, Madhya Maharashtra, Nagaland, Manipur, Mizoram and Tripura and Odisha.
- ❖ **Heavy Rainfall** very likely at isolated places over Costal Karnataka, East Rajasthan, Kerala & Mahe, Saurashtra & Kutch, Uttarakhand, West Bengal & Sikkim and West Uttar Pradesh.
- ❖ **Thundersquall with wind speed reaching(50-60kmph)** very likely at isolated places over East Madhya Pradesh.
- ❖ **Thunderstorm accompanied with lightning & gusty winds(40-50kmph)** very likely at isolated places over Andhra Pradesh, Bihar, Jharkhand, Nagaland, Manipur, Mizoram and Tripura, Rajasthan, Uttar Pradesh, Uttarakhand and West Madhya Pradesh.
- ❖ **Thunderstorm accompanied with lightning & gusty winds(30-40kmph)** very likely at isolated places over Costal Karnataka, Haryana, Chandigarh & Delhi, Himachal Pradesh, Interior Karnataka, Madhya Maharashtra, Marathwada, Punjab, Sub Himalayan West Bengal & Sikkim and Telangana.
- ❖ **Thunderstorm accompanied with Lightning** very likely at isolated places over Arunachal Pradesh, Assam & Meghalaya, Chhattisgarh, Gujarat State and Vidarbha.
- ❖ **Strong Surface Winds** very likely at isolated places over Kerala & Mahe and Lakshadweep.
- ❖ **Squally wind with speed 45kmph to 55kmph gusting to 65kmph** likely to prevail along and off Somalia

***Red color warning does not mean "Red Alert" Red color warning means "Take Action"**

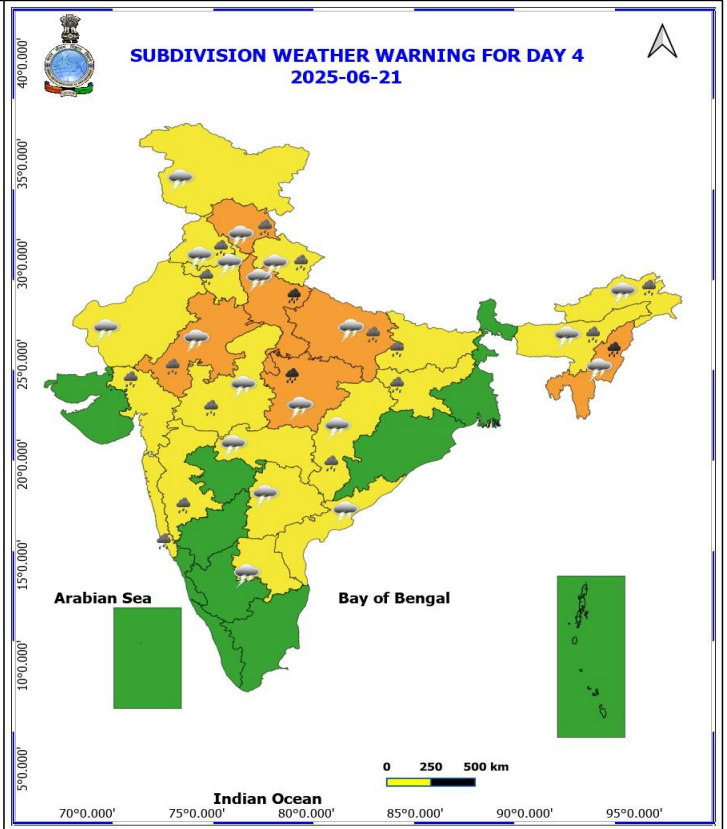
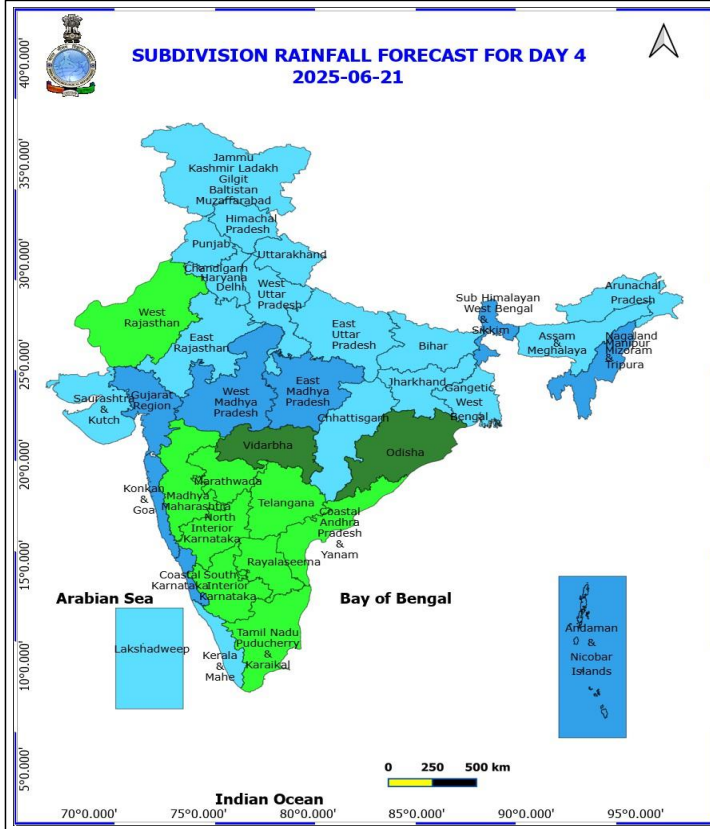
Forecast and warning for any day is valid from 0830 hours IST of day till 0830 hours IST of next day

For more details kindly visit <https://mausam.imd.gov.in> or contact 011-2434-4599

(Service to the nation since 1875)



coast, along and off Oman & adjoining Yemen coasts, most parts of westcentral Arabian Sea & adjoining, some parts of eastcentral Arabian Sea, northern parts of southwest Arabian Sea. **Squally weather with wind speed 40-50 kmph gusting to 60 kmph** likely to prevail along and off north Gujarat, Konkan, Goa, Karnataka coasts, over northern parts of southwest Arabian Sea and adjoining parts of southeast Arabian Sea, most parts of central and northeast Arabian Sea, over most parts of central Bay of Bengal. **Squally weather with wind speed 45-55 kmph gusting to 65 kmph** likely to prevail over many parts of eastcentral Arabian Sea & adjoining, some parts of westcentral Arabian Sea, some northern parts of central Bay of Bengal.



21 June (Day 4)

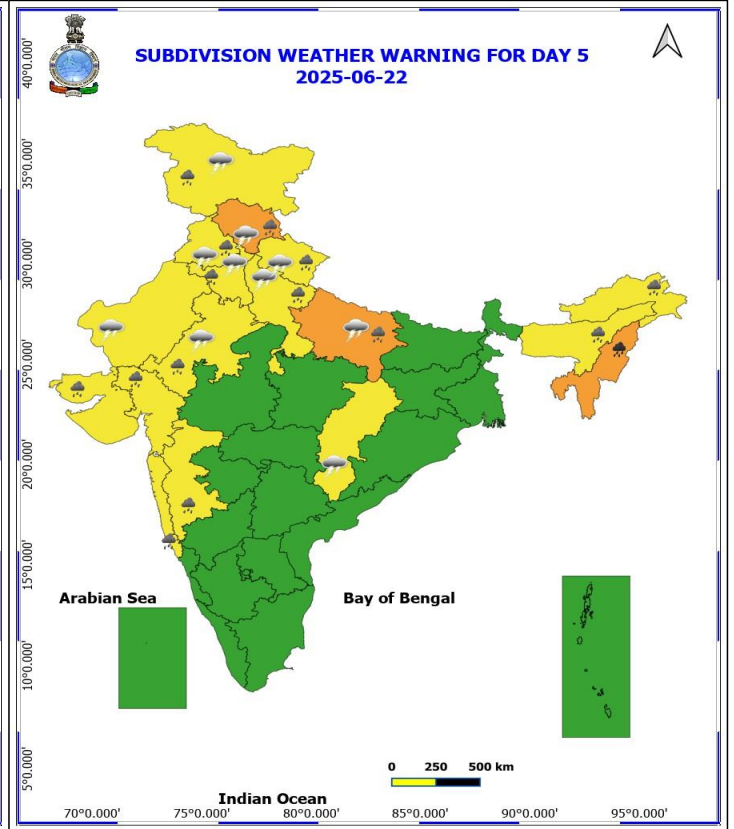
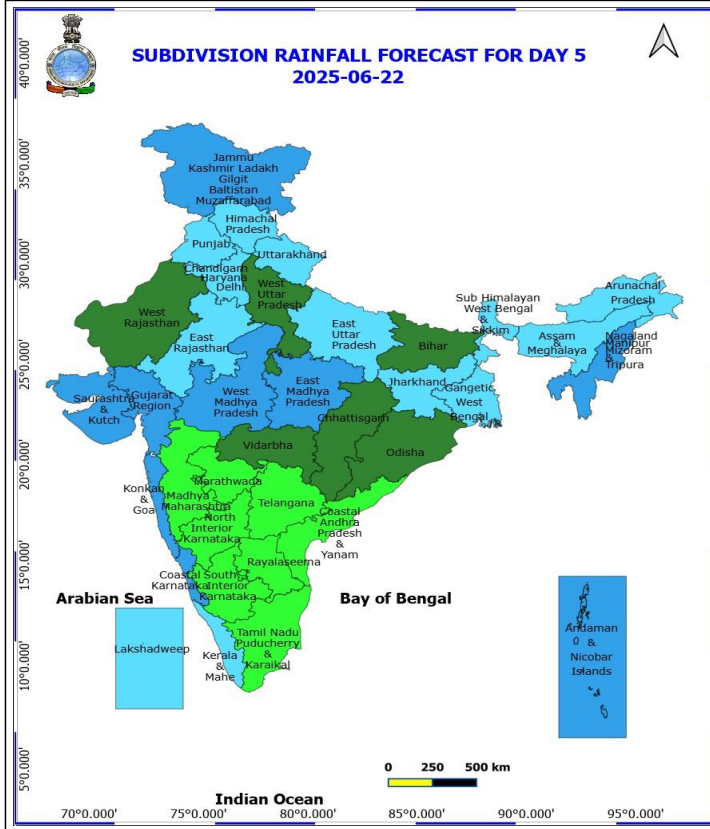
- ❖ **Heavy to Very Heavy Rainfall** likely at isolated places over East Madhya Pradesh, Nagaland, Manipur, Mizoram and Tripura and West Uttar Pradesh.
- ❖ **Heavy Rainfall** likely at isolated places over Arunachal Pradesh, Assam & Meghalaya, Bihar, Chhattisgarh, East Rajasthan, East Uttar Pradesh, Gujarat Region, Haryana, Chandigarh & Delhi, Himachal Pradesh, Jharkhand, Konkan & Goa, Madhya Maharashtra, Punjab, Uttarakhand and West Madhya Pradesh.
- ❖ **Thunderstorm accompanied with lightning & gusty winds(40-50kmph)** likely at isolated places over Andhra Pradesh, Jammu-Kashmir-Ladakh-Gilgit-Baltistan-Muzaffarabad, Madhya Pradesh, Rajasthan, Uttar Pradesh and Uttarakhand.
- ❖ **Thunderstorm accompanied with lightning & gusty winds(30-40kmph)** likely at isolated places over Haryana, Chandigarh & Delhi, Punjab and Telangana.
- ❖ **Thunderstorm accompanied with Lightning** likely at isolated places over Arunachal Pradesh, Assam & Meghalaya, Chhattisgarh, Himachal Pradesh, Nagaland, Manipur, Mizoram and Tripura and Vidarbha.
- ❖ **Squally wind with speed 45 kmph to 55 kmph gusting to 65 kmph** likely to prevail along and off Somali coast, along and off Oman & adjoining Yemen coasts, most parts of west central Arabian Sea & adjoining, some parts of east central Arabian Sea. **Squally weather with wind speed 40 - 50 kmph gusting to 60 kmph** likely to prevail along and off Gujarat, north Konkan coasts, over most parts of central Arabian Sea, over most parts of northeast Arabian Sea, over some parts of central Bay of Bengal. **Squally weather with wind speed 45-55 kmph gusting to 65 kmph** likely to prevail over west central and some parts of east central Arabian Sea.

*Red color warning does not mean "Red Alert" Red color warning means "Take Action"

Forecast and warning for any day is valid from 0830 hours IST of day till 0830 hours IST of next day

For more details kindly visit <https://mausam.imd.gov.in> or contact 011-2434-4599

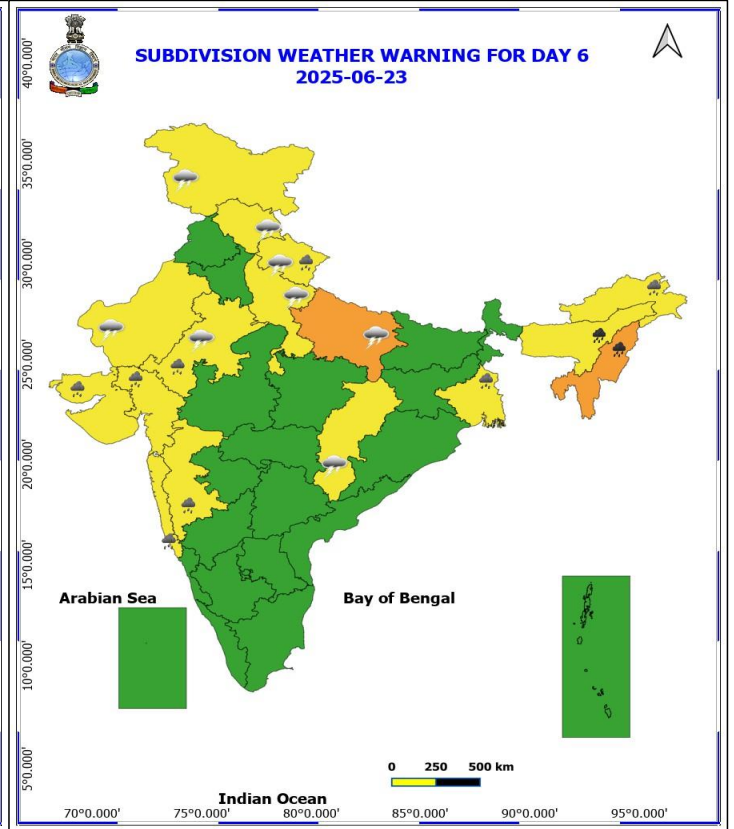
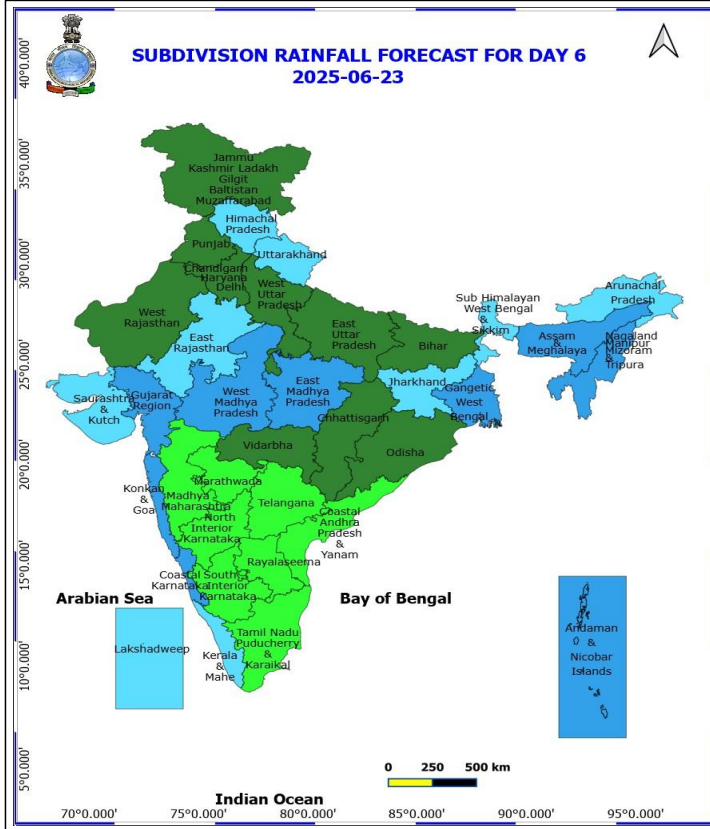
(Service to the nation since 1875)



22 June (Day 5)

- ❖ **Heavy to Very Heavy Rainfall** likely at isolated places over Nagaland, Manipur, Mizoram and Tripura.
- ❖ **Heavy Rainfall** likely at isolated places over Arunachal Pradesh, Assam & Meghalaya, East Rajasthan, Gujarat State, Haryana, Chandigarh & Delhi, Himachal Pradesh, Jammu-Kashmir-Ladakh-Gilgit-Baltistan-Muzaffarabad, Konkan & Goa, Madhya Maharashtra, Punjab, Uttar Pradesh and Uttarakhand.
- ❖ **Thunderstorm accompanied with lightning & gusty winds(40-50kmph)** likely at isolated places over Rajasthan, Uttar Pradesh and Uttarakhand.
- ❖ **Thunderstorm accompanied with lightning & gusty winds(30-40kmph)** likely at isolated places over Haryana, Chandigarh & Delhi, Jammu-Kashmir-Ladakh-Gilgit-Baltistan-Muzaffarabad and Punjab.
- ❖ **Thunderstorm accompanied with Lightning** likely at isolated places over Chhattisgarh and Himachal Pradesh.

No Fishermen Warning



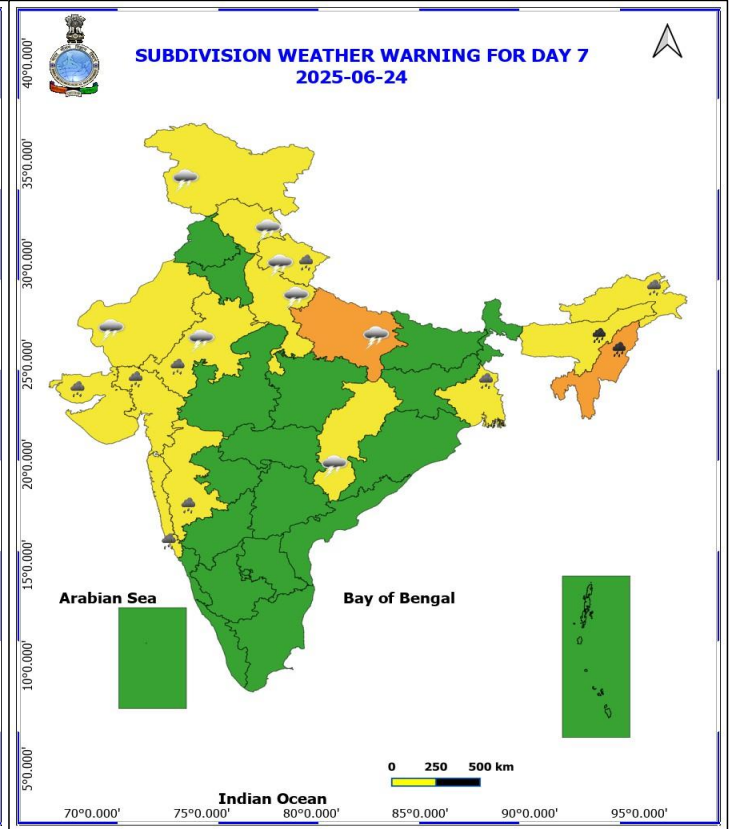
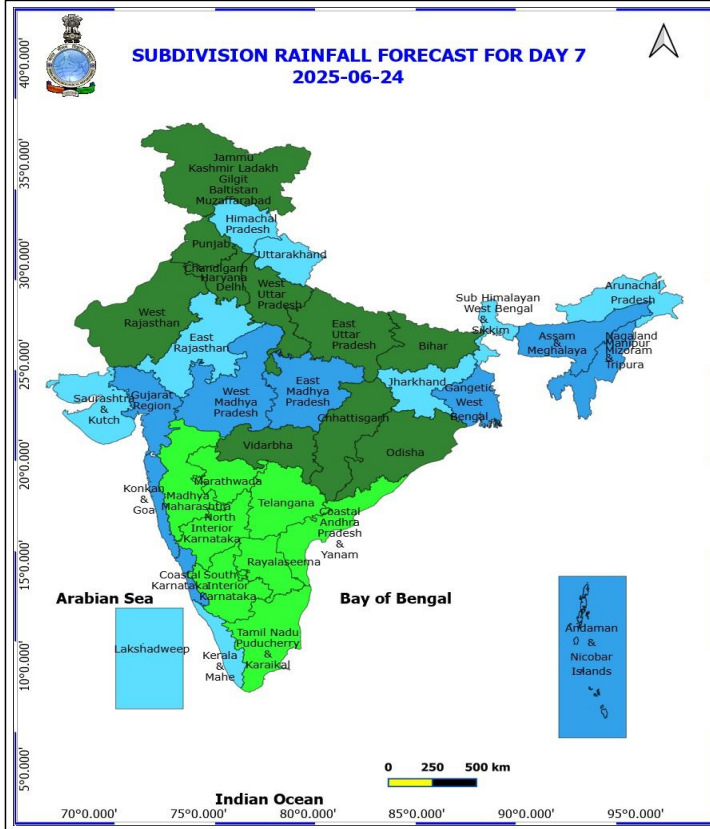
23 June (Day 6)

- ❖ **Heavy to Very Heavy Rainfall** likely at isolated places over Assam & Meghalaya and Nagaland, Manipur, Mizoram and Tripura.
- ❖ **Heavy Rainfall** likely at isolated places over Arunachal Pradesh, East Rajasthan, Gangetic West Bengal, Gujarat State, Konkan & Goa, Madhya Maharashtra and Uttarakhand.
- ❖ **Thunderstorm accompanied with lightning & gusty winds(40-50kmph)** likely at isolated places over Rajasthan, Uttar Pradesh and Uttarakhand.
- ❖ **Thunderstorm accompanied with lightning & gusty winds(30-40kmph)** likely at isolated places over Jammu-Kashmir-Ladakh-Gilgit-Baltistan-Muzaffarabad.
- ❖ **Thunderstorm accompanied with Lightning** likely at isolated places over Chhattisgarh and Himachal Pradesh.

No Fishermen Warning

***Red color warning does not mean "Red Alert" Red color warning means "Take Action"**
Forecast and warning for any day is valid from 0830 hours IST of day till 0830 hours IST of next day
For more details kindly visit <https://mausam.imd.gov.in> or contact 011-2434-4599

(Service to the nation since 1875)



24 June (Day 7)

- ❖ **Heavy to Very Heavy Rainfall** likely at isolated places over Assam & Meghalaya and Nagaland, Manipur, Mizoram and Tripura.
- ❖ **Heavy Rainfall** likely at isolated places over Arunachal Pradesh, East Rajasthan, Gangetic West Bengal, Gujarat State, Konkan & Goa, Madhya Maharashtra and Uttarakhand.
- ❖ **Thunderstorm accompanied with lightning & gusty winds(40-50kmph)** likely at isolated places over Rajasthan, Uttar Pradesh and Uttarakhand.
- ❖ **Thunderstorm accompanied with lightning & gusty winds(30-40kmph)** likely at isolated places over Jammu-Kashmir-Ladakh-Gilgit-Baltistan-Muzaffargarh.
- ❖ **Thunderstorm accompanied with Lightning** likely at isolated places over Chhattisgarh and Himachal Pradesh.

No Fishermen Warning

Weather Outlook for subsequent 3 days

- Fairly widespread to widespread rainfall activity likely over Northeast India, Sub-Himalayan West Bengal & Sikkim, Andaman & Nicobar Islands, Lakshadweep, Konkan & Goa, Marathwada, Madhya Maharashtra Coastal and Interior Karnataka, Telangana, & Rayalaseema and Kerala & Mahe.
- Isolated to scattered rainfall likely over Jammu-Kashmir-Ladakh-Gilgit-Baltistan Muzaffargarh, Uttarakhand, Odisha, south Chhattisgarh, Vidarbha, Madhya Pradesh, Uttar Pradesh, Bihar and Jharkhand.

***Red color warning does not mean "Red Alert" Red color warning means "Take Action"**
Forecast and warning for any day is valid from 0830 hours IST of day till 0830 hours IST of next day
For more details kindly visit <https://mausam.imd.gov.in> or contact 011-2434-4599

(Service to the nation since 1875)



Table-1

7 Days Rainfall Forecast

S.No.	Subdivision	18- Jun	19- Jun	20- Jun	21- Jun	22- Jun	23- Jun	24- Jun
		Day 1	Day 2	Day 3	Day 4	Day 5	Day 6	Day 7
1	ANDAMAN & NICOBAR ISLANDS	WS	WS	WS	WS	WS	WS	WS
2	ARUNACHAL PRADESH	WS	WS	WS	FWS	FWS	FWS	FWS
3	ASSAM & MEHGHALAYA	WS	WS	WS	FWS	FWS	WS	WS
4	N. M. M. & T.	WS	WS	WS	WS	WS	WS	WS
5	S.H. WEST BENGAL & SIKKIM	WS	WS	WS	WS	FWS	FWS	FWS
6	GANGETIC WEST BENGAL	WS	WS	FWS	FWS	FWS	WS	WS
7	ODISHA	WS	WS	FWS	SCT	SCT	SCT	SCT
8	JHARKHAND	WS	WS	WS	FWS	FWS	FWS	FWS
9	BIHAR	FWS	FWS	FWS	FWS	SCT	SCT	SCT
10	EAST UTTAR PRADESH	FWS	WS	WS	FWS	FWS	SCT	SCT
11	WEST UTTAR PRADESH	SCT	FWS	WS	FWS	SCT	SCT	SCT
12	UTTARAKHAND	FWS	FWS	FWS	FWS	FWS	FWS	FWS
13	HARYANA, CHD & DELHI	SCT	ISOL	FWS	FWS	FWS	SCT	SCT
14	PUNJAB	ISOL	ISOL	SCT	FWS	FWS	SCT	SCT
15	HIMACHAL PRADESH	SCT	SCT	FWS	FWS	FWS	FWS	FWS
16	JAMMU AND KASHMIR AND LADAKH	ISOL	ISOL	ISOL	FWS	WS	SCT	SCT
17	WEST RAJASTHAN	ISOL	ISOL	ISOL	ISOL	SCT	SCT	SCT
18	EAST RAJASTHAN	SCT	SCT	SCT	FWS	FWS	FWS	FWS
19	WEST MADHYA PRADESH	SCT	FWS	FWS	WS	WS	WS	WS
20	EAST MADHYA PRADESH	SCT	FWS	WS	WS	WS	WS	WS
21	GUJRAT REGION	WS	FWS	FWS	WS	WS	WS	WS
22	SAURASHTRA & KUTCH	WS	FWS	FWS	FWS	WS	FWS	FWS
23	KONKAN & GOA	WS	WS	WS	WS	WS	WS	WS
24	MADHYA MAHARASHTRA	SCT	ISOL	ISOL	ISOL	ISOL	ISOL	ISOL
25	MARATHWADA	ISOL	ISOL	ISOL	ISOL	ISOL	ISOL	ISOL
26	VIDARBHA	SCT	SCT	SCT	SCT	SCT	SCT	SCT
27	CHATTISGARH	FWS	FWS	FWS	FWS	SCT	SCT	SCT
28	COASTAL ANDHRA PRADESH	ISOL	ISOL	ISOL	ISOL	ISOL	ISOL	ISOL
29	TELANGANA	ISOL	ISOL	ISOL	ISOL	ISOL	ISOL	ISOL
30	RAYALASEEMA	ISOL	ISOL	ISOL	ISOL	ISOL	ISOL	ISOL
31	TAMILNADU & PUDUCHERRY	ISOL	ISOL	ISOL	ISOL	ISOL	ISOL	ISOL
32	COSTAL KARNATAKA	WS	WS	WS	WS	WS	WS	WS
33	NORTH INTERIOR KARNATAKA	SCT	ISOL	ISOL	ISOL	ISOL	ISOL	ISOL
34	SOUTH INTERIOR KARNATAKA	SCT	ISOL	ISOL	ISOL	ISOL	ISOL	ISOL
35	KERALA	WS	FWS	FWS	FWS	FWS	FWS	FWS
36	LAKSHDWEEP	WS	FWS	FWS	FWS	FWS	FWS	FWS

Legend	Category	%Stations
WS	Widespread/Most Places	76-100
FWS	Fairly Widespread/Many Places	51-75
SCT	Scattered/ A Few Places	26-50
ISOL	Isolated Places	1-25
DRY	No Rain	0

*Red color warning does not mean "Red Alert" Red color warning means "Take Action"
Forecast and warning for any day is valid from 0830 hours IST of day till 0830 hours IST of next day
For more details kindly visit <https://mausam.imd.gov.in> or contact 011-2434-4599

(Service to the nation since 1875)

Fig. 1: Maximum Temperatures Dated 2025-06-18

Fig. 2: Departure of Maximum Temp. Dated 2025-06-18

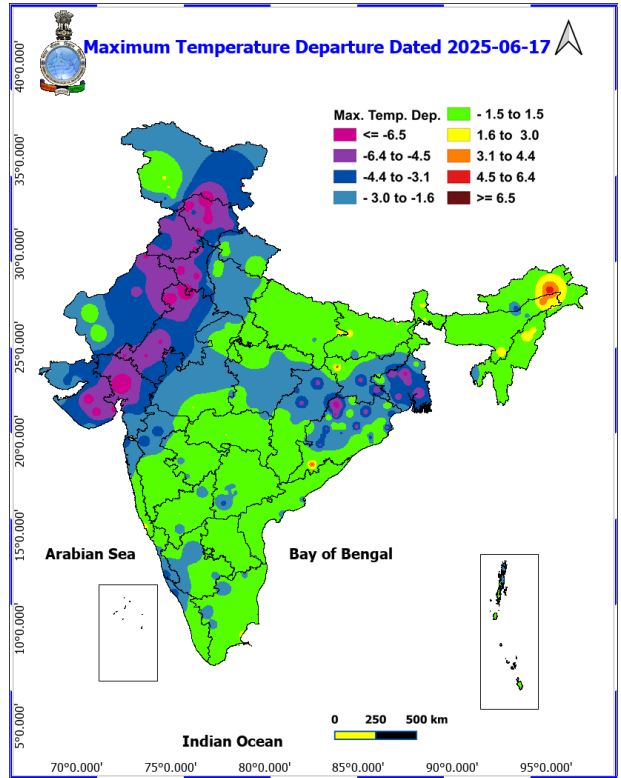
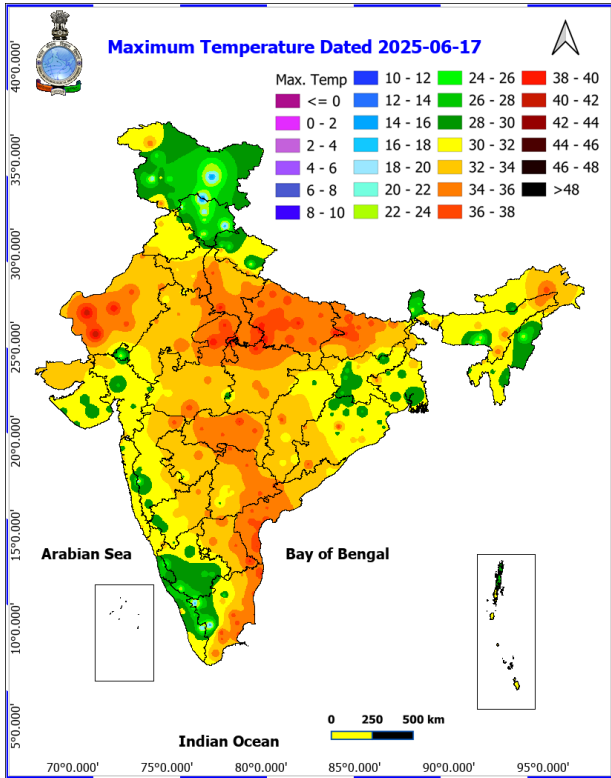
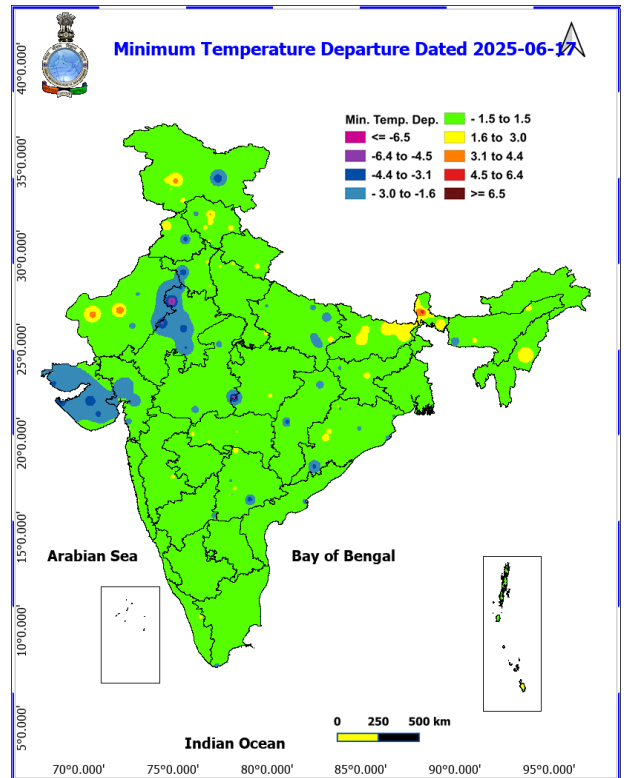
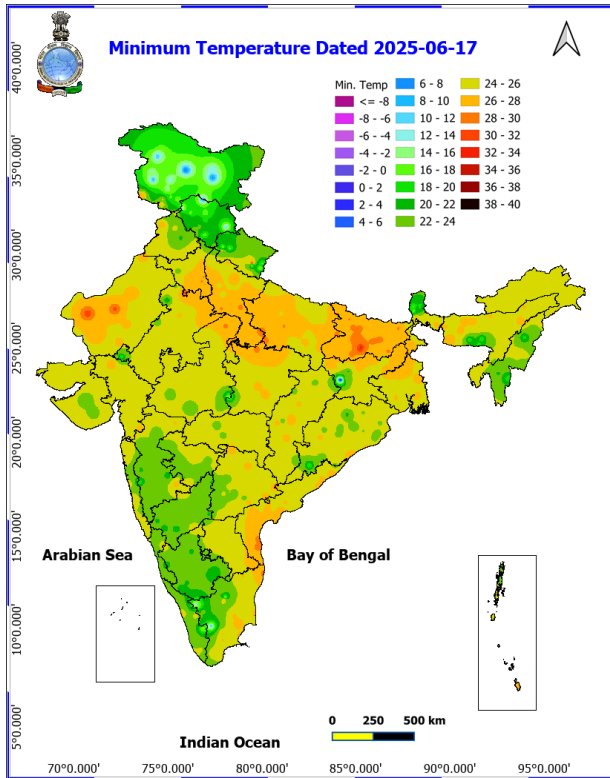


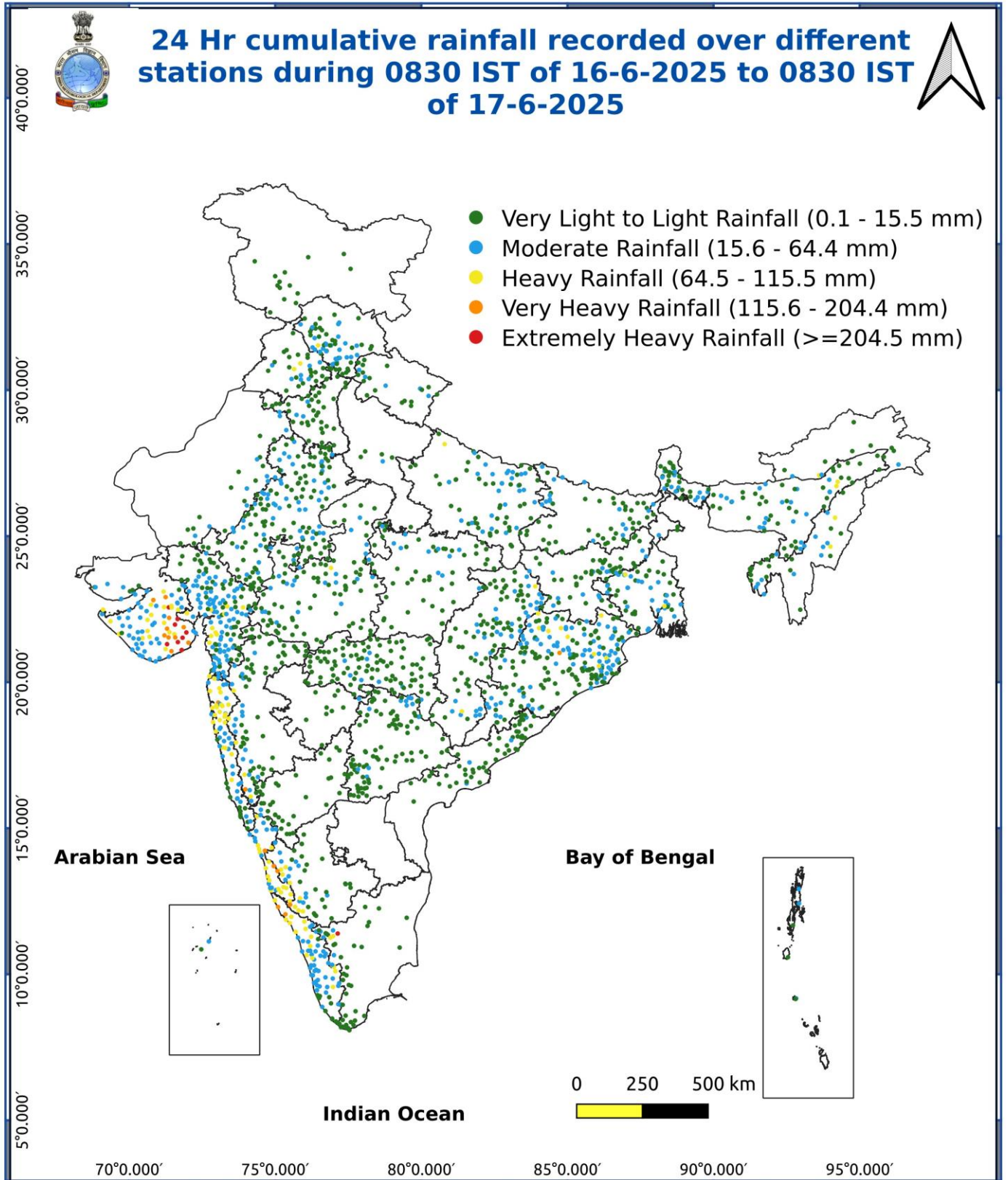
Fig. 3: Minimum Temperatures Dated 2025-06-18

Fig. 4: Departure of Minimum Temp. Dated 2025-06-18



***Red color warning does not mean "Red Alert" Red color warning means "Take Action"**
Forecast and warning for any day is valid from 0830 hours IST of day till 0830 hours IST of next day
For more details kindly visit <https://mausam.imd.gov.in> or contact 011-2434-4599

(Service to the nation since 1875)



***Red color warning does not mean "Red Alert" Red color warning means "Take Action"**
Forecast and warning for any day is valid from 0830 hours IST of day till 0830 hours IST of next day
For more details kindly visit <https://mausam.imd.gov.in> or contact 011-2434-4599

(Service to the nation since 1875)

- ♦ **Extremely heavy rainfall (>20 cm/24 hours) likely at isolated places over Odisha & Gangetic West Bengal on 18th; Jharkhand on 18th & 19th June.**
- ♦ **Heavy to very heavy rainfall** likely to continue over Northeast India during 18th-23rd; Konkan, Konkan & Goa, Madhya Maharashtra on 18th & 19th June.

Impact Expected

- ♦ Localized Flooding of roads, water logging in low lying areas and closure of underpasses mainly in urban areas of the above region.
- ♦ Occasional reduction in visibility due to heavy rainfall.
- ♦ Disruption of traffic in major cities due to water logging in roads leading to increased travel time.
- ♦ Minor damage to kutcha roads.
- ♦ Possibilities of damage to vulnerable structure.
- ♦ Localized Landslides/Mudslides/landslips/mud slips/land sinks/mud sinks.
- ♦ Damage to horticulture and standing crops in some areas due to inundation.
- ♦ It may lead to riverine flooding in some river catchments (for riverine flooding please visit Web page of CWC)

Action Suggested

- ♦ Check for traffic congestion on your route before leaving for your destination.
- ♦ Follow any traffic advisories that are issued in this regard.
- ♦ Avoid going to areas that face the water logging problems often.
- ♦ Avoid staying in vulnerable structure.

Thundersquall (wind speed reaching 50-60 kmph gusting to 70 kmph) at isolated places over Madhya Pradesh on 18th June.

Impact expected:

Breaking of tree branches, uprooting of large avenue trees. Large dead limbs blown from trees. Damage to Standing crops.
Minor to Major damage to banana and papaya trees.
Minor to major damage to power and communication lines due to breaking of branches.
Strong wind/hail may damage plantation, horticulture and standing crops.
Partial damage to vulnerable structures due to strong winds.
Minor damage to kutcha houses/walls and huts.
Loose objects may fly.

Action suggested:

People are advised to keep a watch on the weather for worsening conditions and be ready to move to safer places accordingly.
Stay indoors, close windows & doors and avoid travel if possible.
Take safe shelters; do not take shelter under trees.
Do not lie on concrete floors and do not lean against concrete walls.
Unplug electrical/ electronic appliances.
Immediately get out of water bodies.
Keep away from all the objects that conduct electricity.

Agromet advisories for various parts of the country

- In **Jharkhand**, make necessary arrangements to drain out excess water from rice nursery, moong, vegetables and fruit orchards. Postpone harvesting of summer maize and keep the already harvested produce in safe place.
- In **South Gujrat**, postpone sowing of soybean and rice nursery. Ensure proper drainage facilities in already sown rice nurseries, soybean and also in banana plantations to prevent water logging. Provide support to sugarcane and banana to prevent lodging.
- In **Gangetic West Bengal**, ensure proper drainage in already sown rice nurseries, sesame and jute. Cover the young seedlings of *kharif* rice with plastic sheets or agro-shade nets to protect them from heavy rains.
- In **Sub-Himalayan West Bengal**, maintain proper drainage channels in rice nurseries and fields of jute and ginger to avoid water stagnation.
- In **North Odisha**, postpone sowing of rice nursery and ensure proper drainage to drain out excess water from already sown rice nurseries, maize and vegetables to prevent water logging. Postpone sowing of millets, maize, pulses and vegetables during heavy rain. Cover rice and vegetable nursery with plastic sheets to prevent washing away seeds.
- In **Kerala**, ensure proper drainage facilities in rice nurseries, transplanted rice fields, coconut and banana plantations to prevent water logging. Undertake propping in banana to protect the plants from heavy rains.
- In **Tamil Nadu**, postpone nursery sowing / transplanting of rice and sowing of sorghum and cumbu. Ensure proper drainage facilities in rice nurseries, cotton, sugarcane, groundnut and transplanted rice fields, coconut and banana plantations to prevent water logging. Provide staking or support to tender plants of cotton, young plants of sugarcane and fruit-bearing plants of banana to avoid lodging.
- In **Coastal Karnataka**, postpone nursery sowing of rice. Ensure proper drainage facilities in rice nurseries, banana, coconut and arecanut plantations to prevent water logging. In **South Interior Karnataka**, postpone nursery sowing of rice and sowing of pigeon pea, maize and onion. Cover young seedlings of rice with plastic sheets or agro-shade nets to protect them from heavy rains. Provide adequate drainage to remove excess water from rice nurseries, coffee, cardamom, coconut and arecanut plantations to prevent water logging. Provide support to sugarcane and banana to prevent lodging. In **North Interior Karnataka**, drain out excess water from the crops which are at seedling stage to prevent water logging.
- In **Konkan & Goa**, postpone nursery sowing of rice. In **Konkan & Goa** and **ghat areas of Madhya Maharashtra**, make arrangement to drain out excess water from rice nurseries to prevent water logging.
- In **Bhabar and Tarai Zone of Uttarakhand**, harvest vegetables (tomato, French beans etc.) and fruits and keep them in safer place. Ensure proper drainage in already sown crops of pigeon pea, millets and soybean.
- In **Assam**, keep the harvested produce of sesame, foxtail millet, *Boro* rice, banana and citrus at safer places. Ensure proper drainage in *Sali* rice nursery, maize and sugarcane fields, arecanut and coconut plantations to prevent water logging.
- In **Meghalaya**, ensure proper drainage in the fields of maize, ginger, French bean, cowpea, vegetables and around rice nurseries to prevent water logging. Provide strong bamboo stakes or trellis support to cow pea, cucumber and bottle gourd to prevent vines from trailing on wet ground. Provide support to banana plant to prevent lodging.
- In **Mizoram**, ensure proper drainage facilities in maize and low land pre-*kharif* rice to avoid water stagnation. Undertake propping in five-month-old sugarcane crop to avoid lodging.
- In **Arunachal Pradesh**, keep the harvested produce of soybean and vegetables such as chilli and okra at a safer place. Ensure proper drainage in rice nurseries, kiwi and apple orchards to avoid water logging.

Livestock / Fishery

- Keep the animals inside the shed during heavy rainfall and provide them balanced feed.
- Store feed and fodder in a safe place to prevent spoilage.
- Construct an outlet with proper netting around the ponds to drain out excess water, thereby preventing fish from escaping in case of overflow.

Agromet advisories for likely impact of Thunderstorm / Gusty Winds / Squally Winds

- Provide mechanical support to horticultural crops and staking or support to vegetables and young fruit plants / fruit-bearing plants to avoid lodging due to strong winds.

Flash Flood Warning

24 hours Outlook for the Flash Flood Risk (FFR) till 0530 IST of 19-06-2025 :

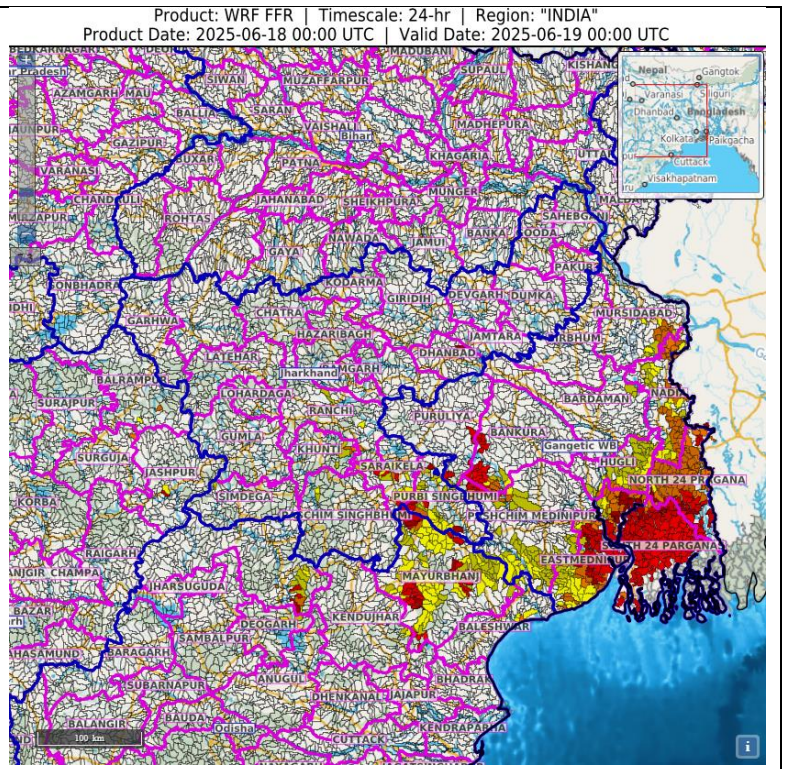
Low to Moderate flash flood risk likely over few watersheds & neighbourhoods of following Met Sub-divisions during next 24 hours.

Gangetic West Bengal - Bankura, Eastmednipur, Haora, Nadia, North 24 Pragana, Pashchim Medinipur, Puruliya and South 24 Parganas districts.

Adjoining Jharkhand - East Singhbhum, Khunti, Saraikela and West Singhbhum districts.

Adjoining Odisha - Baleshwar, Deogarh, Kendujhar, Mayurbhanj and Sundargarh districts.

Surface runoff/ Inundation may occur at some fully saturated soils & low-lying areas over Area of Concern (AoC) as shown in map due to expected rainfall occurrence in next 24 hours.



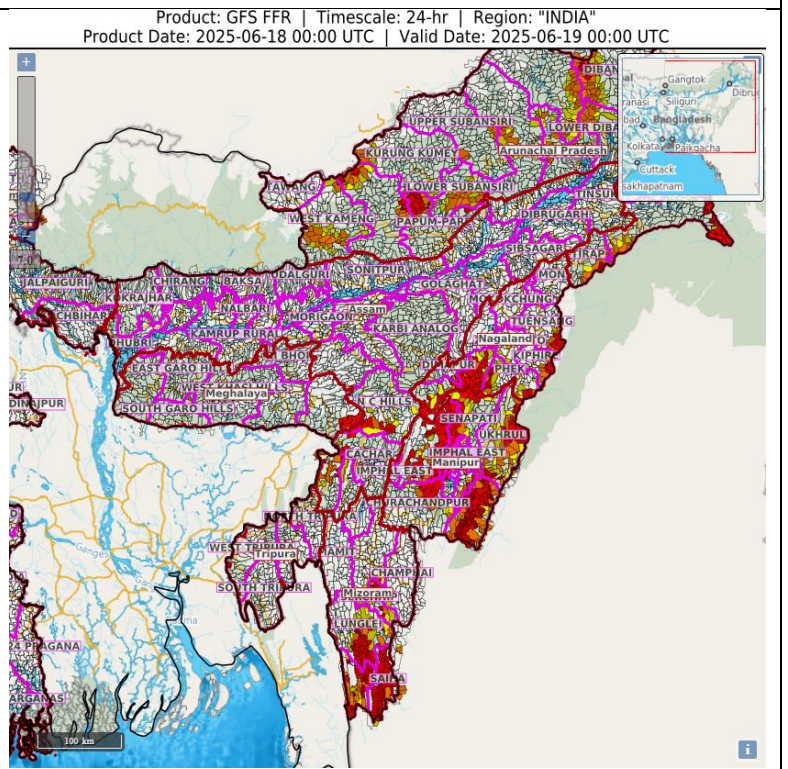
24 hours Outlook for the Flash Flood Risk (FFR) till 0530 IST of 19-06-2025 :

Moderate to High flash flood risk likely over few watersheds & neighbourhoods of following Met Sub-divisions during next 24 hours.

Assam & Meghalaya - Cachar, Hailakandi, N.C Hills, Karimganj, East Khasi Hills, South Garo Hills, West Khasi Hills and Jaintia Hills districts.

Nagaland Mizoram Manipur Tripura (NMMT)
 Manipur – Chandel, Churachandpur, Imphal East, Imphal West, Senapati, Tamenglong, Ukhrul;
 Mizoram – Aizawl, Lawngtlai, Lunglei, Saiha, Serchhip;
 Nagaland – Dimapur, Kiphire, Kohima, Longleng, Mokokchung, Mon, Peren, Phek, Tuensang, Wokha, Zunheboto;

Surface runoff/ Inundation may occur at some fully saturated soils & low-lying areas over Area of Concern (AoC) as shown in map due to expected rainfall occurrence in next 24 hours.

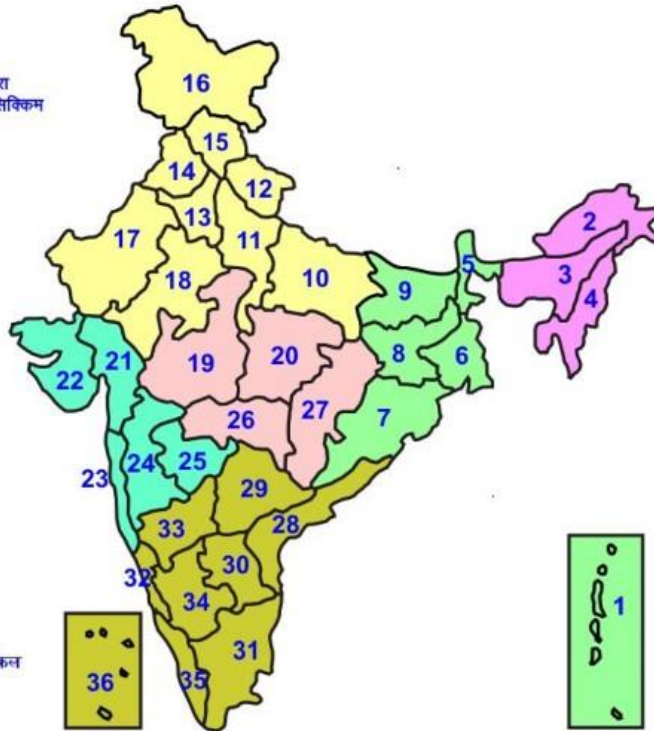


***Red color warning does not mean "Red Alert" Red color warning means "Take Action"**
 Forecast and warning for any day is valid from 0830 hours IST of day till 0830 hours IST of next day
 For more details kindly visit <https://mausam.imd.gov.in> or contact 011-2434-4599

(Service to the nation since 1875)

LEGENDS

- 1 अंडमान और निकोबार द्वीप समुह
- 2 अरुणाचल प्रदेश
- 3 असम और मेघालय
- 4 नागालैंड मनीपुर मीजोरम और त्रिपुरा
- 5 उप हिमालय पश्चिम बंगाल एवं सिक्किम
- 6 पश्चिम बंगाल
- 7 ओडिसा
- 8 झारखंड
- 9 बिहार
- 10 पूर्वी उत्तर प्रदेश
- 11 पश्चिम उत्तर प्रदेश
- 12 उत्तराखंड
- 13 हरियाणा चंडिगढ़ एवं दिल्ली
- 14 पंजाब
- 15 हिमाचल प्रदेश
- 16 जम्मू एवं कश्मीर एवं लद्दाख
- 17 पश्चिम राजस्थान
- 18 पूर्वी राजस्थान
- 19 पश्चिम मध्य प्रदेश
- 20 पूर्वी मध्य प्रदेश
- 21 गुजरात क्षेत्र
- 22 सौराष्ट्र एवं कच्छ
- 23 कोंकण एवं गोवा
- 24 मध्य महाराष्ट्र
- 25 मराठावाडा
- 26 विदर्भ
- 27 छत्तीसगढ़
- 28 तटीय आंध्र प्रदेश एवं यनम
- 29 तेलंगाना
- 30 रायलसेमा
- 31 तमिलनाडु, पुदुचेरी एवं कराईकल
- 32 तटिय कर्नाटक
- 33 आंतरिक उत्तरी कर्नाटक
- 34 आंतरिक दक्षिणी कर्नाटक
- 35 केरल एवं माहे
- 36 लक्षद्वीप



1. Andaman & Nicobar Islands
2. Arunachal Pradesh
3. Assam & Meghalaya
4. Nagaland, Manipur, Mizoram & Tripura
5. Sub-Himalayan West Bengal & Sikkim
6. Gangetic West Bengal
7. Orissa
8. Jharkhand
9. Bihar
10. East Uttar Pradesh
11. West Uttar Pradesh
12. Uttarakhand
13. Haryana, Chd & Delhi
14. Punjab
15. Himachal Pradesh
16. Jammu & Kashmir and Ladakh
17. West Rajasthan
18. East Rajasthan
19. West Madhya Pradesh
20. East Madhya Pradesh
21. Gujarat
22. Saurashtra
23. Konkan & Goa
24. Madhya Maharashtra
25. Marathwada
26. Vidharbha
27. Chhattisgarh
28. Coastal Andhra Pradesh & Yanam
29. Telangana
30. Rayalaseema
31. Tamilnadu, Puducherry & Karaikal
32. Coastal Karnataka
33. North Interior Karnataka
34. South Interior Karnataka
35. Kerala & Mahe
36. Lakshadweep

SPATIAL DISTRIBUTION (% of Stations reporting)

% Stations	Category	% Stations	Category
76-100	Widespread (WS/ Most Places)	26-50	Scattered (SCT/ A Few Places)
51-75	Fairly Widespread (FWS/ Many Places)	1-25	Isolated (ISOL)

Subdivision Colour

- NO WARNING
- WATCH (BE UPDATED)
- ALERT (BE PREPARED TO TAKE ACTION)
- WARNING (TAKE ACTION)

Probabilistic Forecast

Terms	Probability of Occurrence (%)
Unlikely	< 25
Likely	25 - 50
Very Likely	50 - 75
Most Likely	> 75

- | | | | |
|--------------------------|-----------------|----------------------|--------------------|
| Heavy Rain | Very Heavy Rain | Extremely Heavy Rain | Heavy Snow |
| Thunderstorm & Lightning | Hailstorm | Dust Storm | Dust Raising Winds |
| Strong surface winds | Heat Wave | Hot Day | Warm Night |
| Cold Wave | Cold Day | Ground Frost | Fog |
| Hot & Humid | | | |

*Red color warning does not mean "Red Alert" Red color warning means "Take Action"

Forecast and warning for any day is valid from 0830 hours IST of day till 0830 hours IST of next day

For more details kindly visit <https://mausam.imd.gov.in> or contact 011-2434-4599

(Service to the nation since 1875)

LEGENDS

WARNING

WARNING (TAKE ACTION)
ALERT (BE PREPARED)
WATCH (BE UPDATED)
NO WARNING (NO ACTION)

Probabilistic Forecast

Terms	Probability of Occurrence (%)
Unlikely	< 25
Likely	25 - 50
Very Likely	50 - 75
Most Likely	> 75



Heavy: 64.5 to 115.5 mm/cm *
Very Heavy: 115.6 to 204.4 mm/cm *
Extremely Heavy: > 204.4 mm/cm *



When maximum temperature of a station reaches $\geq 40^{\circ}\text{C}$ for plains and $\geq 30^{\circ}\text{C}$ for hilly regions
(a) Based on Departure from normal

Heat Wave: Maximum Temperature Departure from normal 4.5°C to 6.4°C .
Severe Heat Wave: Maximum Temperature Departure from normal $\geq 6.5^{\circ}\text{C}$

(b). Based on Actual maximum temperature

Heat Wave: When actual maximum temperature $\geq 45^{\circ}\text{C}$.
Severe Heat Wave: When actual maximum temperature $\geq 47^{\circ}\text{C}$

(c). Criteria for heat wave for coastal stations

When maximum temperature departure is $> 4.5^{\circ}\text{C}$ from normal. Heat Wave may be described provided maximum temperature $\geq 37^{\circ}\text{C}$



When maximum temperature remains 40°C

Warm Night: When minimum temperature departure 4.5°C to 6.4°C .
Severe Warm Night: When minimum temperature departure $> 6.4^{\circ}\text{C}$.



When minimum temperature of a station $\leq 10^{\circ}\text{C}$ for plains and $\leq 0^{\circ}\text{C}$ for hilly regions.

(a). Based on departure

Cold Wave: Minimum Temperature Departure from normal -4.5°C to -6.4°C .
Severe Cold Wave: Minimum Temperature Departure from normal $\leq -6.5^{\circ}\text{C}$

(b) Based on actual Minimum Temperature (for Plains only)

Cold Wave : When Minimum Temperature is $\leq 4.0^{\circ}\text{C}$
Severe Cold Wave: When Minimum Temperature is $\leq 2.0^{\circ}\text{C}$

(c) For Coastal Stations

When Minimum Temperature departure is $\leq -4.5^{\circ}\text{C}$ & actual Minimum Temperature is $\leq 15^{\circ}\text{C}$



When minimum temperature of a station $\leq 10^{\circ}\text{C}$ for plains and $\leq 0^{\circ}\text{C}$ for hilly regions
Based on departure

Cold Day: Maximum Temperature Departure from normal -4.5°C to -6.4°C .
Severe Cold Day: Maximum Temperature Departure from normal $\leq -6.5^{\circ}\text{C}$



Phenomenon of small droplets suspended in air and the horizontal visibility $< 1\text{km}$

Moderate Fog: When the visibility between 500-200 metres
Dense Fog: when the visibility between 50- 200 metres
Very Dense Fog: when the visibility < 50 metres



Sudden electrical discharges manifested by a flash of light (Lightning) and a sharp rumbling sound (thunder)



An ensemble of particles of dust or sand energetically lifted to great heights by a strong and turbulent wind.



Ice deposits on ground

Air temperature $\leq 4^{\circ}\text{C}$ (over Plains)



A strong wind that rises suddenly, lasts for atleast 1 minute.

Moderate: Wind speed 52-61 kmph
Severe: Wind speed 62-87 kmph
Very Severe: Wind speed > 87 kmph



Effect of various waves in the sea over specific area

Rough to very rough: Wind speed 41-62 kmph (22-33 knots) & Wave height 2.5-6 metre
High to very high: Wind speed 63-117 kmph (34-63 knots) & Wave height 6-14 metre
Phenomenal: Wind speed > 117 kmph (> 63 knots) & Wave height > 14 metre



Cyclonic Storm: Wind speed 62-87 kmph (34-47 knots)
Severe Cyclonic Storm: Wind speed 88-117 kmph (48-63 knots)
Very Severe Cyclonic Storm: Wind speed 118-165 kmph (64 - 89 knots)
Extremely Severe Cyclonic Storm: Wind speed 166-220 kmph (90 -119 knots)
Super Cyclone Storm: Wind speed > 220 kmph (> 119 knots)

*Red color warning does not mean "Red Alert" Red color warning means "Take Action"

Forecast and warning for any day is valid from 0830 hours IST of day till 0830 hours IST of next day

For more details kindly visit <https://mausam.imd.gov.in> or contact 011-2434-4599

(Service to the nation since 1875)