

2025-10-29

Time of Issue: 09:11:00 hours IST  
(Morning)

## ALL INDIA WEATHER SUMMARY AND FORECAST BULLETIN

### Significant Weather Features

#### Weather warning:

#### South Peninsular India:

- Light to moderate rainfall/thunderstorm at most/many places with isolated **heavy rainfall** over Kerala & Mahe on 29<sup>th</sup>; Telangana on 30<sup>th</sup> October with isolated **very heavy rainfall** over Telangana on 29<sup>th</sup> October.
- **Extremely heavy rainfall ( $\geq 21$  cm)** likely at isolated places over Coastal Andhra Pradesh & Yanam and Rayalaseema on 29<sup>th</sup> October.
- Thunderstorm with lightning & gusty winds (speed reaching 30-50 kmph) likely over Rayalaseema, Kerala & Mahe, Coastal Karnataka, North Interior Karnataka and Lakshadweep on 29<sup>th</sup>; Telangana during 29<sup>th</sup> October-01<sup>st</sup> November and Coastal Andhra Pradesh & Yanam on 29<sup>th</sup> & 30<sup>th</sup> October.

#### East & Central India:

- Light to moderate rain/thunderstorm at some/isolated places with isolated **heavy rainfall** over West Madhya Pradesh, Odisha on 29<sup>th</sup> & 30<sup>th</sup>, East Madhya Pradesh on 29<sup>th</sup> & 31<sup>st</sup>, Vidarbha and Chhattisgarh on 30<sup>th</sup>; Gangetic West Bengal, Jharkhand during 29<sup>th</sup>-31<sup>st</sup>, Bihar on 29<sup>th</sup> and Sub-Himalayan West Bengal & Sikkim on 30<sup>th</sup> October & 01<sup>st</sup> November with isolated **very heavy rainfall** over Vidarbha on 29<sup>th</sup>; East Madhya Pradesh on 30<sup>th</sup>; Bihar on 30<sup>th</sup> & 31<sup>st</sup> and Sub-Himalayan West Bengal & Sikkim on 31<sup>st</sup> October.
- Thunderstorm with lightning and gusty winds (speed reaching 30-40 kmph) likely during next 4 days over Madhya Pradesh; Bihar, Andaman & Nicobar Islands on 29<sup>th</sup> & 30<sup>th</sup>; Sub-Himalayan West Bengal & Sikkim, Bihar and Gangetic West Bengal during 29<sup>th</sup>-31<sup>st</sup> October and Odisha during next 4 days with gusty winds (speed reaching 40-50 kmph) likely over Vidarbha on 29<sup>th</sup> October.
- **Thundersquall wind speed reaching 50-60 kmph over Chhattisgarh on 29<sup>th</sup> October.**

#### West India:

- Light to moderate rain/thunderstorm at many/some places with isolated **heavy rainfall** over Konkan & Goa and Marathwada, Madhya Maharashtra on 29<sup>th</sup> and Gujarat Region during 29<sup>th</sup>-31<sup>st</sup> October with isolated **very heavy rainfall** over Saurashtra & Kutch during 29<sup>th</sup> -31<sup>st</sup> October.
- Thunderstorm with lightning and gusty winds (speed reaching 30-40 kmph) likely over the region during next 4 days.

#### Northeast India:

- Light to moderate rain/thunderstorm at many/some places with isolated **heavy rainfall** over Arunachal Pradesh on 30<sup>th</sup> October-02<sup>nd</sup> November; Nagaland, Manipur, Mizoram & Tripura during 31<sup>st</sup> October-02<sup>nd</sup> November; Assam & Meghalaya on 30<sup>th</sup> and during 02<sup>nd</sup>-04<sup>th</sup> November with isolated **very heavy rainfall** over Assam & Meghalaya and Arunachal Pradesh on 31<sup>st</sup> October & 01<sup>st</sup> November.
- Thunderstorm with lightning and gusty winds (speed reaching 30-40 kmph) over Northeast India during 30<sup>th</sup> October- 01<sup>st</sup> November.

#### Northwest India:

- Light to moderate rain/thunderstorm at isolated places with isolated **heavy rainfall** likely over East Uttar Pradesh on 31<sup>st</sup> October with isolated **very heavy rainfall** over East Rajasthan on 30<sup>th</sup> October.
- Thunderstorm with lightning and gusty winds (speed reaching 30-40 kmph) likely over West Uttar Pradesh on 30<sup>th</sup>; East Uttar Pradesh on 30<sup>th</sup> & 31<sup>st</sup> with thunderstorm with lightning East Rajasthan on 30<sup>th</sup> October.
- No significant change in temperature over the region for next 5-7 days.

\*Red color warning does not mean "Red Alert" Red color warning means "Take Action"

Forecast and warning for any day is valid from 0830 hours IST of day till 0830 hours IST of next day

For more details kindly visit <https://mausam.imd.gov.in> or contact 011-2434-4599

(Service to the nation since 1875)

**Main Weather Observations:**

❖ **Rainfall distribution** (from 0830 hours IST of yesterday to 0530 hours IST of today): **at most places** over Coastal Andhra Pradesh & Yanam, Andaman & Nicobar Islands, Odisha, Gangetic West Bengal, Rayalaseema, Marathwada, Kerala & Mahe, Coastal Karnataka, Telangana and Chhattisgarh; **at many places** over East Madhya Pradesh, Konkan & Goa, West Uttar Pradesh, East Uttar Pradesh, Bihar, Lakshadweep, Gujarat Region, Jharkhand, East Rajasthan, Saurashtra & Kutch, South Interior Karnataka, Tamilnadu Puducherry & Karaikal, North Interior Karnataka, Vidarbha and West Madhya Pradesh; **Dry** over rest of the country.

❖ **Significant rainfall recorded(in cm)** (from 0830 hours IST of yesterday to 0530 hours IST of today): **Coastal Andhra Pradesh & Yanam:** Ongole (dist Prakasam) 24, Kavali (dist Sri Potti Sriramulu Nellore) 22, Bapatla (dist Bapatla) 11, Nellore (dist Sri Potti Sriramulu Nellore) 10, Tuni (dist Kakinada) 4, Kalingapatnam (dist Srikakulam), Machilipatnam (dist Krishna), Vishakhapatnam (dist Visakhapatnam) 3 Each, Visakhapatnam (dist Visakhapatnam), Amaravati-ap-obs2 (dist Guntur) 2 Each; **Odisha:** Chandbali (dist Bhadrak) 7, Balasore (dist Balasore) 6, Bhubaneswar (dist Khordha), Paradip Port (dist Jagatsinghapur), Gopalpur (dist Ganjam), Keonjhar (dist Kendujhar) 2 Each; **Gujarat Region:** Deesa (dist Banaskantha) 5; **Gangetic West Bengal:** Digha (dist North 24 Parganas) 5, Haldia (dist Purba Medinipur) 4; **Rayalaseema:** Kurnool (dist Kurnool) 4, Tirupathi (dist Tirupati) 2; **Marathwada:** Aurangabad (chikalthana) AP (dist Aurangabad) 4; **Jharkhand:** Jamshedpur AP (dist East Singhbhum) 3; **East Rajasthan:** Kota AP (dist Kota) 2; **Lakshadweep:** Minicoy (dist Lakshadweep) 2; **Saurashtra & Kutch:** Veraval (dist Gir Somnath) 2; **Kerala & Mahe:** Thiruvananthapuram-city (dist Thiruvananthapuram), Kozhikode (calicut) (dist Kozhikode) 2 Each.

❖ **Heavy Rainfall observed** (from 0830 hours IST of yesterday to 0530 hours IST of today): **Extremely heavy rain** at isolated places over Coastal Andhra Pradesh & Yanam **Heavy rain** at isolated places over Odisha and Coastal Andhra Pradesh & Yanam.

❖ **Minimum Temperature Departures (as on 28-10-2025):** **markedly above normal(> 5.1°C)** at many places over Bihar; at few places over Madhya Maharashtra, Marathwada and Vidarbha; at isolated places over Assam & Meghalaya, West Uttar Pradesh, Saurashtra & Kutch, Chhattisgarh and Telangana. **appreciably above normal(3.1°C to 5.0°C)** at many places over Sub Himalayan West Bengal & Sikkim; at few places over Nagaland, Manipur, Mizoram & Tripura, Gangetic West Bengal, East Uttar Pradesh, Haryana-Chandigarh-Delhi, West Rajasthan, East Rajasthan and Gujarat Region; at isolated places over Jharkhand, Uttarakhand, Punjab, Himachal Pradesh and North Interior Karnataka. **above normal(1.6°C to 3.0°C)** at many places over Rayalaseema; at few places over Odisha, South Interior Karnataka and Lakshadweep; at isolated places over Jammu-KashmirLadakh-Gilgit-Baltistan-Muzaffarabad, East Madhya Pradesh, Konkan & Goa, Coastal Andhra Pradesh & Yanam and Tamil Nadu, Puducherry & Karaikal. **near normal(-1.5°C to 1.5°C)** at many places over Kerala & Mahe; at most places over Andaman & Nicobar Islands, Arunachal Pradesh and Coastal Karnataka; at few places over West Madhya Pradesh. **The lowest minimum temperature** of 11.6°C is reported at UNA (HIMACHAL PRADESH) over the Plains of India.

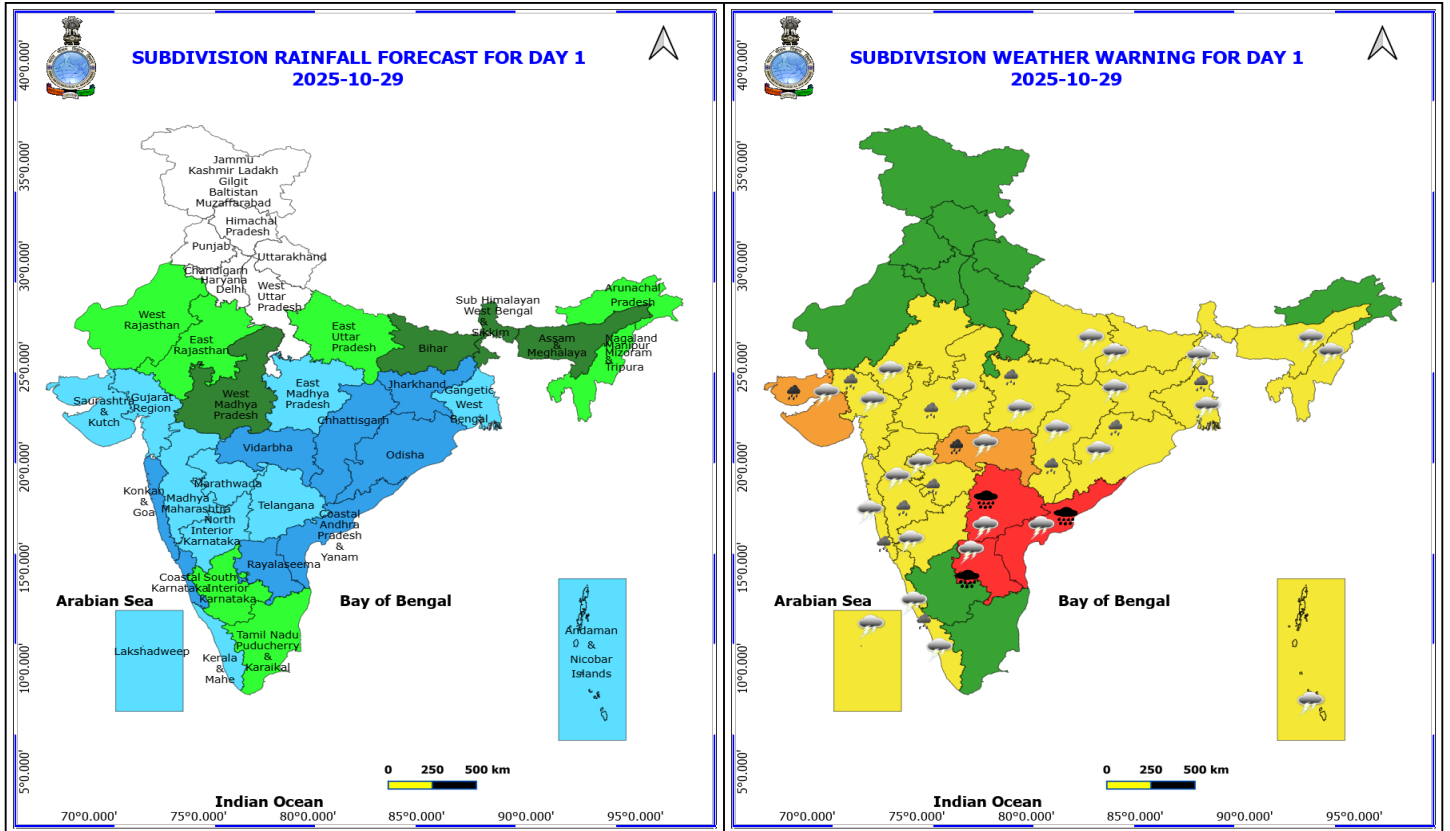
❖ **Maximum Temperature Departures (as on 28-10-2025):** **markedly above normal(> 5.1°C)** at isolated places over Nagaland, Manipur, Mizoram & Tripura, Odisha and Jammu-KashmirLadakh-Gilgit-Baltistan-Muzaffarabad. **appreciably above normal(3.1°C to 5.0°C)** at few places over Assam & Meghalaya and Gangetic West Bengal; at isolated places over Sub Himalayan West Bengal & Sikkim. **above normal(1.6°C to 3.0°C)** at few places over Bihar; at isolated places over Himachal Pradesh, Chhattisgarh, Tamil Nadu, Puducherry & Karaikal and Kerala & Mahe. **near normal(-1.5°C to 1.5°C)** at many places over Jharkhand, Marathwada and Vidarbha; at most places over Punjab and Lakshadweep; at few places over Andaman & Nicobar Islands, Arunachal Pradesh, Telangana and Coastal Karnataka; at isolated places over West Uttar Pradesh, Uttarakhand, Haryana-Chandigarh-Delhi, West Madhya Pradesh, Konkan & Goa, Madhya Maharashtra, Coastal Andhra Pradesh & Yanam, North Interior Karnataka and South Interior Karnataka. **The highest maximum temperature** of 36.0°C is reported at KAILASHAHAR (A) (TRIPURA).

### Meteorological Analysis (Based on 0530 hours IST)

- The **Cyclonic Storm “Montha” [Pronunciation: Mon-Tha]** over coastal Andhra Pradesh moved nearly north-northwestwards with a speed of 15 kmph during past six hours and lay centered at 0530 hrs IST of today, the 29th October 2025, over the same region, near latitude 17.0°N & longitude 81.3°E, about 80 km northwest of Narsapur (Andhra Pradesh), 100 km west of Kakinada (Andhra Pradesh), 90 km north of Machilipatnam (Andhra Pradesh), 230 km west-southwest of Visakhapatnam (Andhra Pradesh) and 460 km southwest of Gopalpur (Odisha). It is likely to move north-northwestwards across coastal Andhra Pradesh and Telangana and weaken into a deep depression during next 3 hours and into a depression during subsequent 6 hours.
- The **Depression** over eastcentral Arabian Sea moved northeastwards with a speed of 05 kmph during past 6 hours and lay centered at 0530 hrs IST of today, the 29th October 2025, over the same region, near latitude 17.9°N & longitude 69.2°E, about 410 km west-southwest of Mumbai (Maharashtra), 430 km southwest of Veraval (Gujarat), 560 km west-northwest of Panjim (Goa), 820 km northwest of Mangalore (Karnataka), 850 km north-northwest of Aminidivi (Lakshadweep). It is likely to move northeastwards across Eastcentral Arabian Sea during next 36 hours.
- The **upper air cyclonic circulation** over northeast Rajasthan & neighbourhood now lies over south Haryana & adjoining Rajasthan at 3.1 km above mean sea level persists.
- The **trough** from the upper air cyclonic circulation associated with Depression over eastcentral Arabian sea to northeast Rajasthan across northeast Arabian sea and central Gujarat region at 1.5 km above mean sea level has become less marked.
- The **Western Disturbance** as a trough in middle tropospheric westerlies with its axis at 5.8 km above mean sea level roughly along Long. 75°E to the north of Lat. 32°N persists.

### Weather Outlook for subsequent 3 days

- Scattered to Fairly widespread rainfall activity likely over the southern part of India.
- Isolated to scattered rainfall activity likely over Northeast and East India.



**29 October (Day 1)**

- ❖ **Heavy to Very Heavy Rainfall with isolated Extremely Heavy Rainfall** very likely at isolated places over Andhra Pradesh and Telangana.
- ❖ **Heavy to Very Heavy Rainfall** very likely at isolated places over Saurashtra & Kutch and Vidarbha.
- ❖ **Heavy Rainfall** very likely at isolated places over Chhattisgarh, Gangetic West Bengal, Gujarat Region, Kerala & Mahe, Konkan & Goa, Madhya Maharashtra, Madhya Pradesh, Marathwada and Odisha.
- ❖ **Thundersquall with wind speed reaching(50-60kmph)** very likely at isolated places over Chhattisgarh.
- ❖ **Thunderstorm accompanied with lightning & gusty winds(40-50kmph)** very likely at isolated places over Kerala & Mahe, Lakshadweep, Telangana and Vidarbha.
- ❖ **Thunderstorm accompanied with lightning & gusty winds(30-40kmph)** very likely at isolated places over Andaman & Nicobar Islands, Bihar, Coastal Karnataka, Jharkhand, North Interior Karnataka, Odisha and West Bengal & Sikkim.
- ❖ **Thunderstorm accompanied with Lightning** very likely at isolated places over Andhra Pradesh, Assam & Meghalaya, East Rajasthan, East Uttar Pradesh, Gujarat State, Konkan & Goa, Madhya Maharashtra, Madhya Pradesh, Marathwada and Nagaland, Manipur, Mizoram and Tripura.

Squally weather with wind speed 35 kmph to 45 kmph gusting to 55 kmph likely to prevail along and off Karnataka, Gujarat, Konkan, Goa coasts and adjoining sea areas, over eastcentral Arabian Sea and adjoining areas, over Gulf of Mannar, along and off Tamil Nadu, Andhra Pradesh, Odisha, West Bengal coasts, over central Bay of Bengal and adjoining south Bay of Bengal, northwest & adjoining northeast Bay of Bengal.

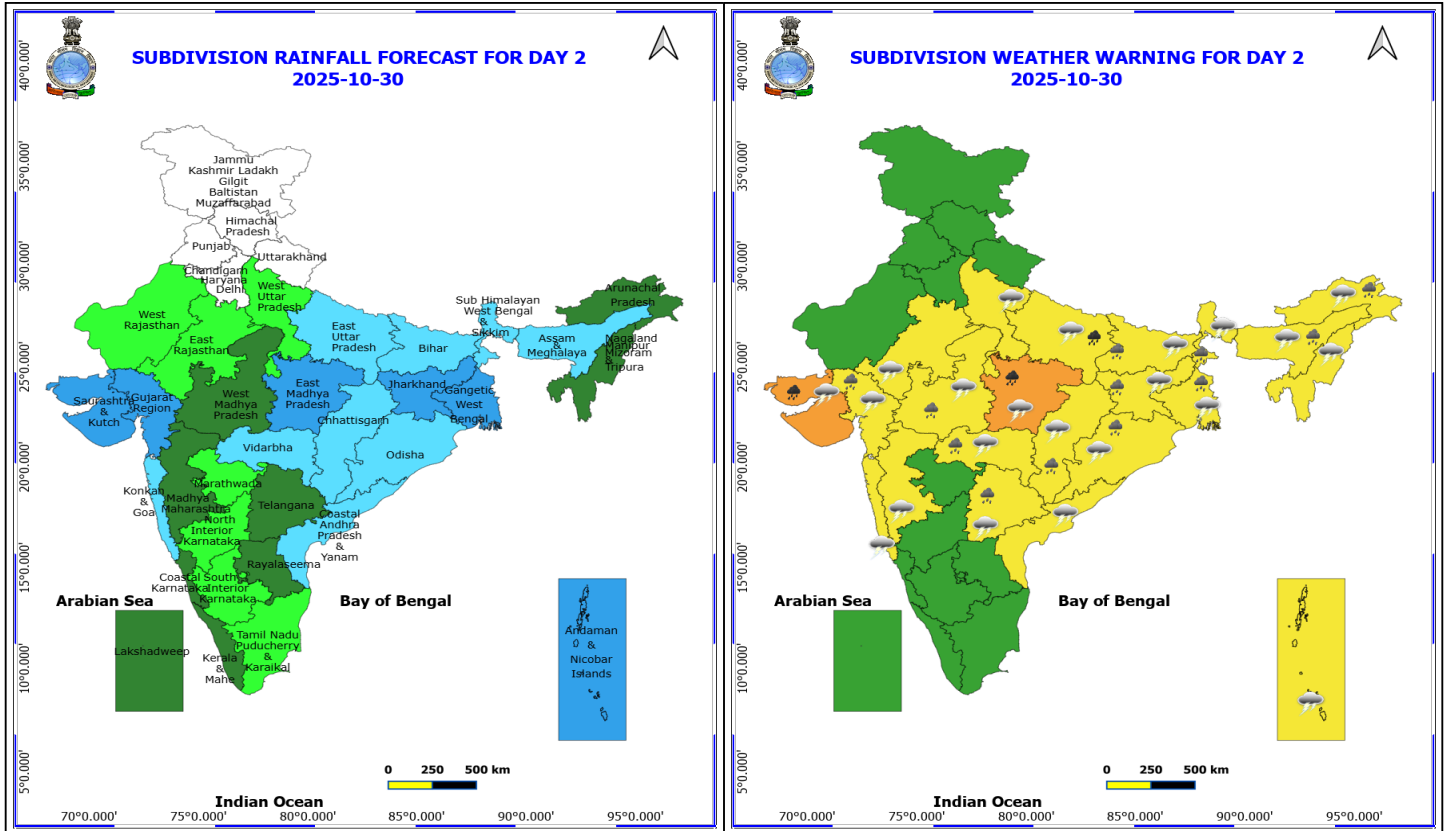
**\*Red color warning does not mean "Red Alert" Red color warning means "Take Action"**  
Forecast and warning for any day is valid from 0830 hours IST of day till 0830 hours IST of next day  
For more details kindly visit <https://mausam.imd.gov.in> or contact 011-2434-4599

(Service to the nation since 1875)



Squally weather with wind speed 45 kmph to 55 kmph gusting to 65 kmph likely to prevail over some parts of eastcentral Arabian Sea and adjoining areas, along and off north Tamil Nadu, Andhra Pradesh and adjoining south Odisha coasts and adjoining sea areas, over most parts of westcentral Bay of Bengal.

Squally weather with wind speed 55 kmph to 65 kmph gusting to 75 kmph likely to prevail along and off north Andhra Pradesh coast and adjoining sea area.

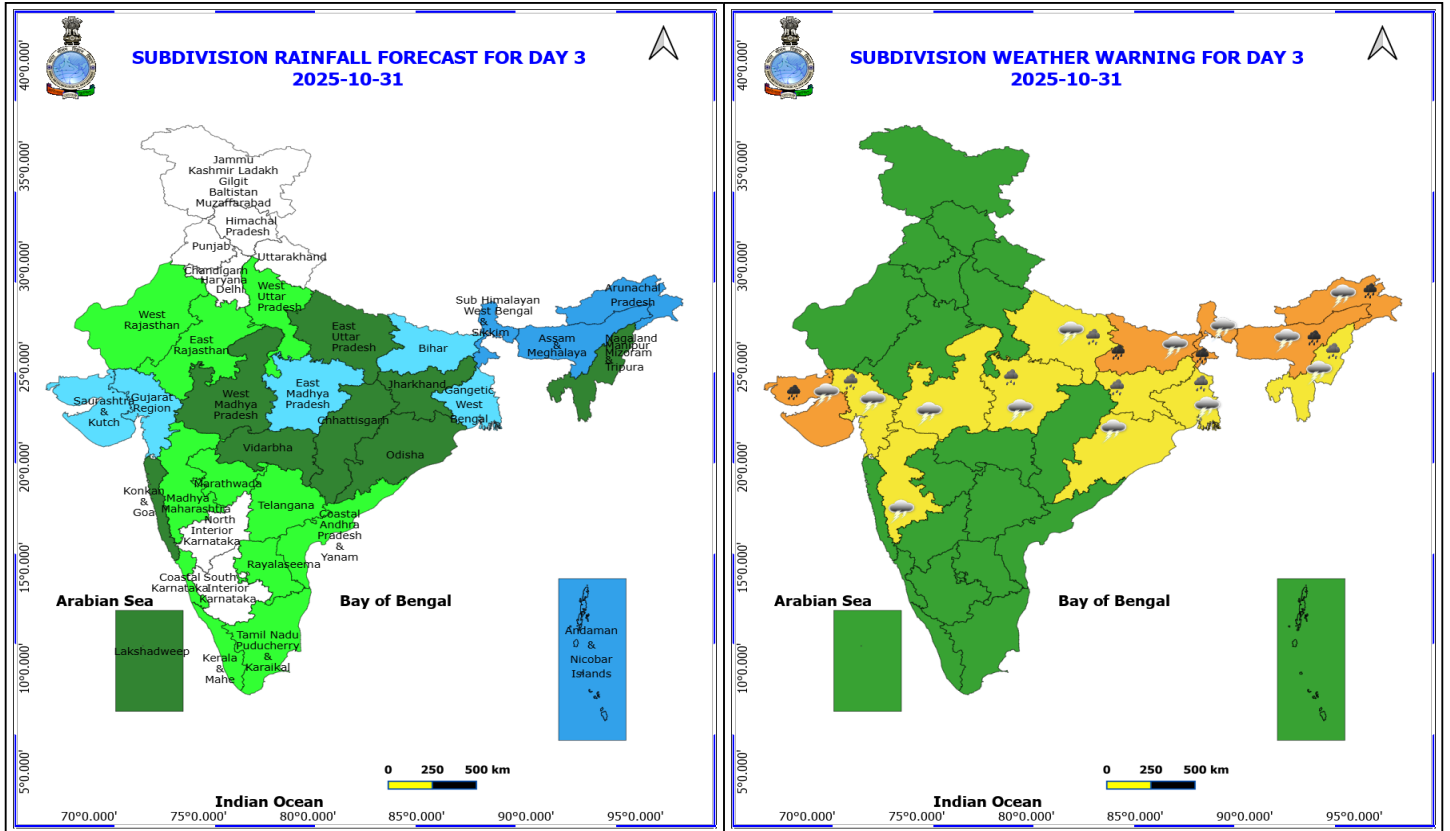


**30 October (Day 2)**

- ❖ **Heavy to Very Heavy Rainfall** very likely at isolated places over East Madhya Pradesh, East Uttar Pradesh and Saurashtra & Kutch.
- ❖ **Heavy Rainfall** very likely at isolated places over Arunachal Pradesh, Assam & Meghalaya, Bihar, Chhattisgarh, Gujarat Region, Jharkhand, Odisha, Telangana, Vidarbha, West Bengal & Sikkim and West Madhya Pradesh.
- ❖ **Thunderstorm accompanied with lightning & gusty winds(40-50kmph)** very likely at isolated places over East Uttar Pradesh.
- ❖ **Thunderstorm accompanied with lightning & gusty winds(30-40kmph)** very likely at isolated places over Andaman & Nicobar Islands, Arunachal Pradesh, Bihar, Jharkhand, Odisha, Telangana, West Bengal & Sikkim and West Uttar Pradesh.
- ❖ **Thunderstorm accompanied with Lightning** very likely at isolated places over Assam & Meghalaya, Chhattisgarh, Coastal Andhra Pradesh, East Rajasthan, Gujarat State, Konkan & Goa, Madhya Maharashtra, Madhya Pradesh, Nagaland, Manipur, Mizoram and Tripura and Vidarbha.

Squally weather with wind speed 35 kmph to 45 kmph gusting to 55 kmph likely to prevail along and off Karnataka, Gujarat, Konkan, Goa coasts and adjoining sea areas, over eastcentral Arabian Sea and adjoining areas, along and off Andhra Pradesh and adjoining south Odisha coasts and adjoining sea areas, over many parts of central Bay of Bengal.

Squally weather with wind speed 45 kmph to 55 kmph gusting to 65 kmph likely to prevail over some parts of eastcentral Arabian Sea.



**31 October (Day 3)**

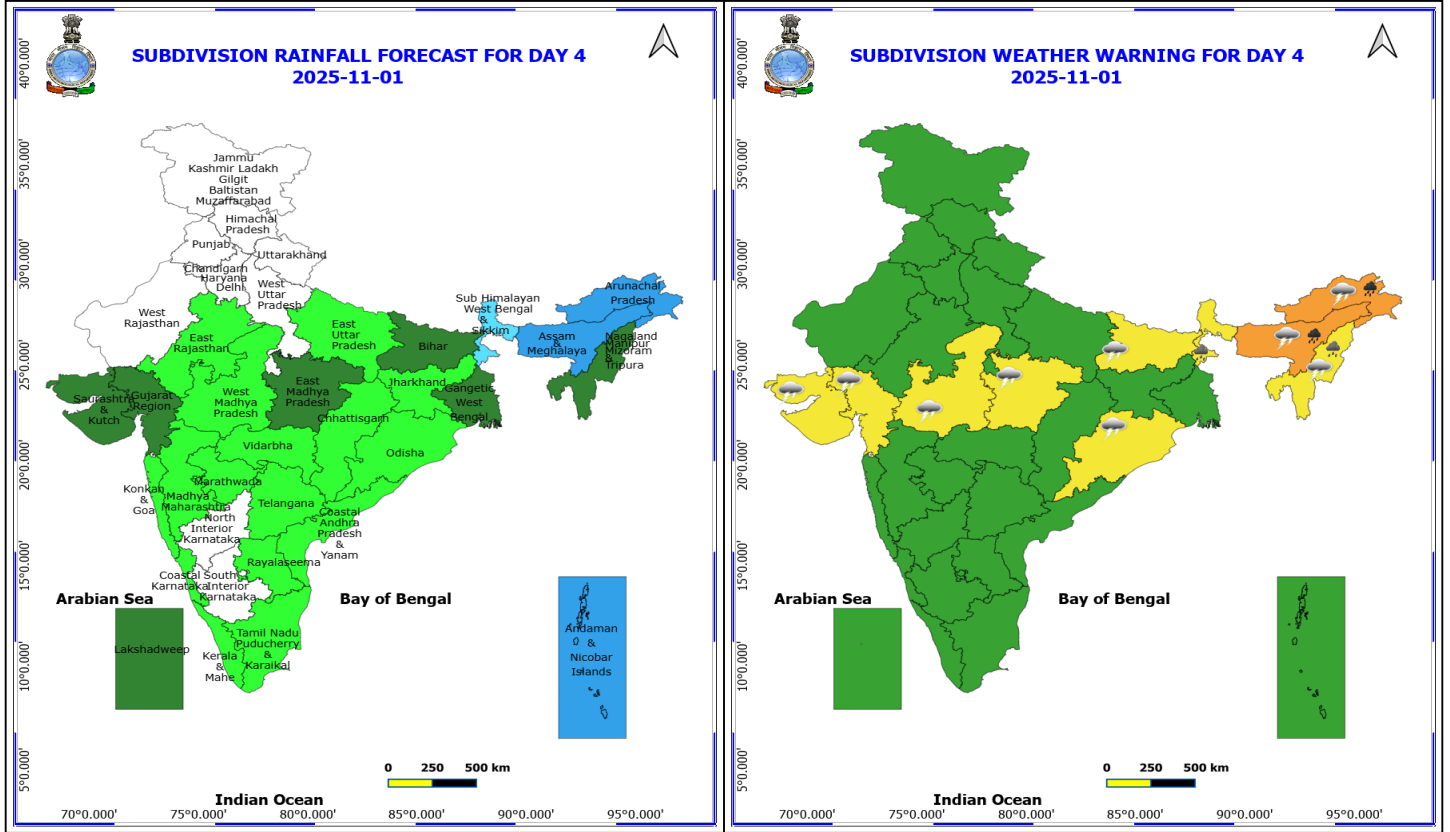
- ❖ **Heavy to Very Heavy Rainfall** very likely at isolated places over Arunachal Pradesh, Assam & Meghalaya, Bihar, Saurashtra & Kutch and Sub Himalayan West Bengal & Sikkim.
- ❖ **Heavy Rainfall** very likely at isolated places over East Madhya Pradesh, East Uttar Pradesh, Gangetic West Bengal, Gujarat Region, Jharkhand and Nagaland, Manipur, Mizoram and Tripura.
- ❖ **Thunderstorm accompanied with lightning & gusty winds(40-50kmph)** very likely at isolated places over East Madhya Pradesh and East Uttar Pradesh.
- ❖ **Thunderstorm accompanied with lightning & gusty winds(30-40kmph)** very likely at isolated places over Arunachal Pradesh, Assam & Meghalaya, Bihar, Odisha and West Bengal & Sikkim.
- ❖ **Thunderstorm accompanied with Lightning** very likely at isolated places over Gujarat State, Madhya Maharashtra, Nagaland, Manipur, Mizoram and Tripura and West Madhya Pradesh.

Squally weather with wind speed 35 kmph to 45 kmph gusting to 55 kmph likely to prevail along and off Gujarat, north Konkan coasts and adjoining sea areas, over many parts of eastcentral, northeast Arabian Sea and adjoining areas.

Squally weather with wind speed 45 kmph to 55 kmph gusting to 65 kmph likely to prevail along and off north Gujarat and adjoining south Gujarat coast and adjoining sea areas, over some parts of eastcentral, northeast Arabian Sea.

**\*Red color warning does not mean "Red Alert" Red color warning means "Take Action"**  
Forecast and warning for any day is valid from 0830 hours IST of day till 0830 hours IST of next day  
For more details kindly visit <https://mausam.imd.gov.in> or contact 011-2434-4599

(Service to the nation since 1875)

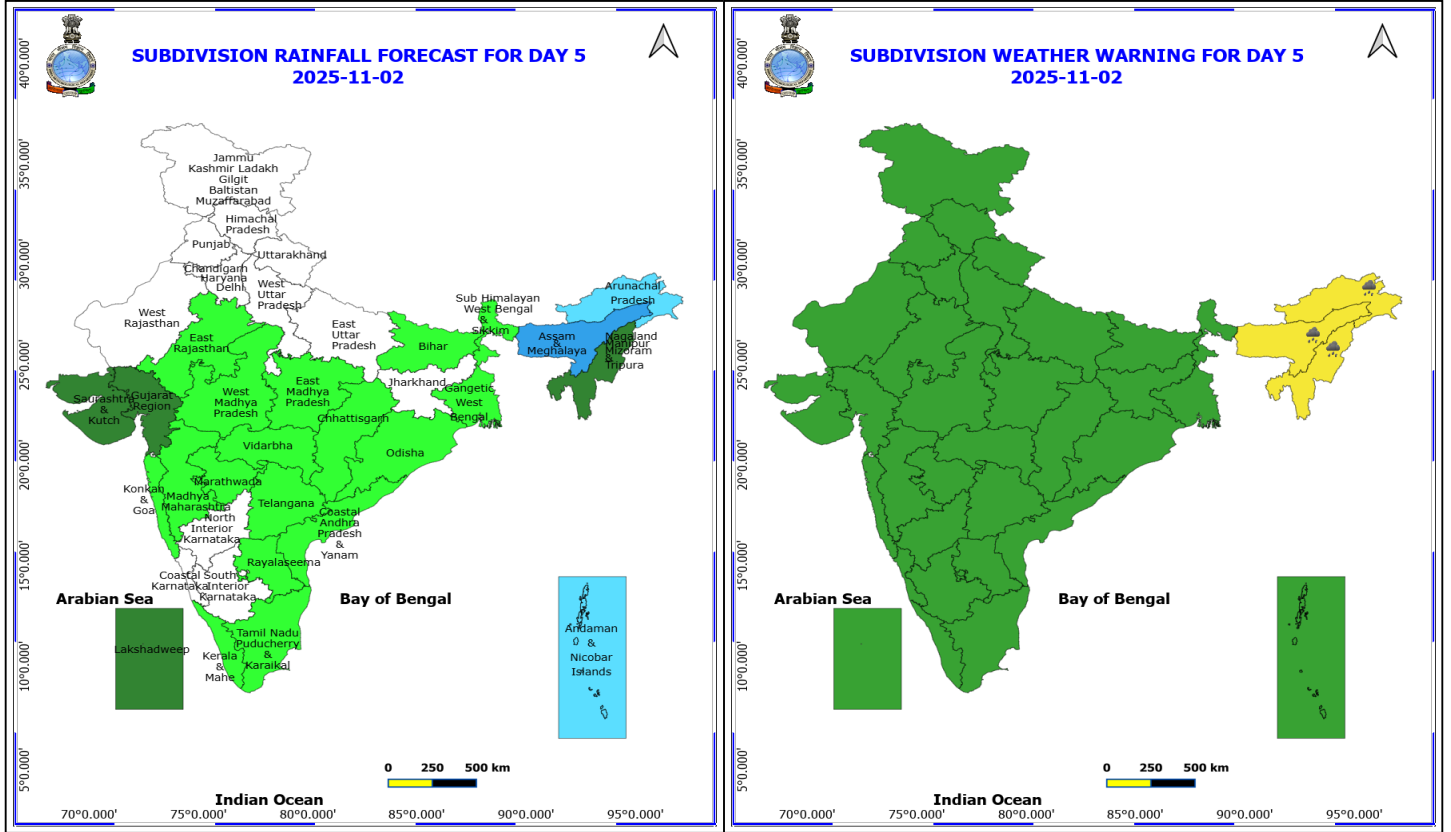


**1 November (Day 4)**

- ❖ **Heavy to Very Heavy Rainfall** likely at isolated places over Arunachal Pradesh and Assam & Meghalaya.
- ❖ **Heavy Rainfall** likely at isolated places over Nagaland, Manipur, Mizoram and Tripura and Sub Himalayan West Bengal & Sikkim.
- ❖ **Thunderstorm accompanied with lightning & gusty winds(40-50kmph)** likely at isolated places over East Madhya Pradesh.
- ❖ **Thunderstorm accompanied with lightning & gusty winds(30-40kmph)** likely at isolated places over Arunachal Pradesh, Assam & Meghalaya, Bihar and Odisha.
- ❖ **Thunderstorm accompanied with Lightning** likely at isolated places over Gujarat State, Nagaland, Manipur, Mizoram and Tripura and West Madhya Pradesh.

Squally weather with wind speed 35 kmph to 45 kmph gusting to 55 kmph likely to prevail along and off Gujarat, adjoining north Konkan coasts and adjoining sea areas, over many parts of eastcentral, northeast Arabian Sea and adjoining areas.

Squally weather with wind speed 45 kmph to 55 kmph gusting to 65 kmph likely to prevail along and off north Gujarat and adjoining south Gujarat coast and adjoining sea areas, over some parts of eastcentral, northeast Arabian Sea.

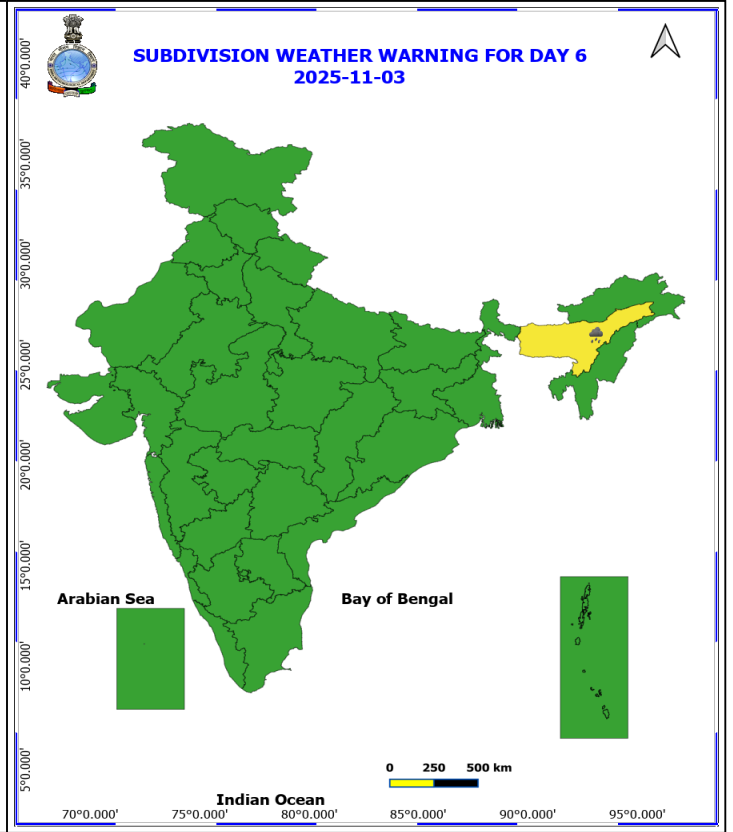
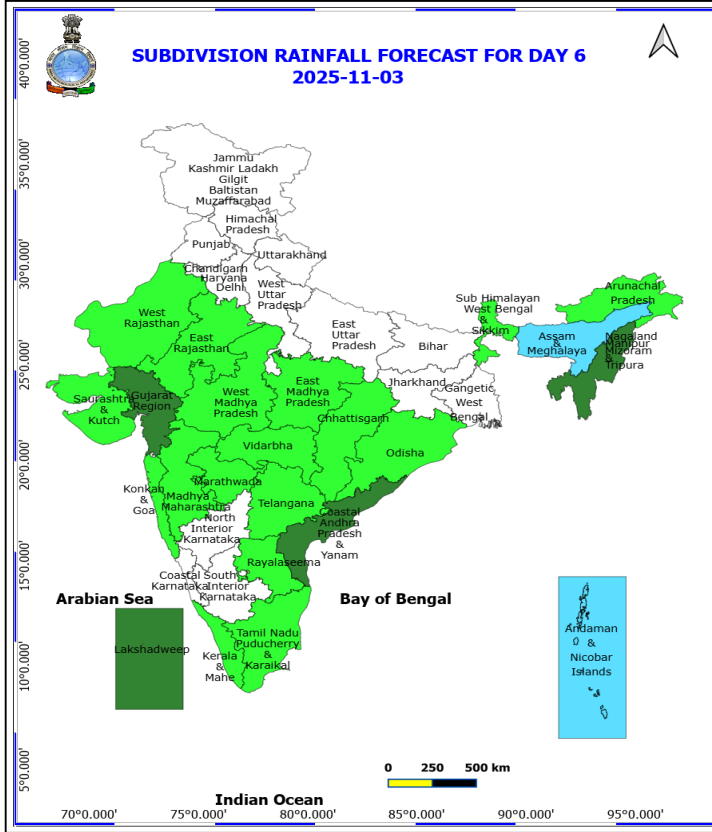


**2 November (Day 5)**

❖ **Heavy Rainfall** likely at isolated places over Arunachal Pradesh, Assam & Meghalaya and Nagaland, Manipur, Mizoram and Tripura.

Squally weather with wind speed 35 kmph to 45 kmph gusting to 55 kmph likely to prevail along and off Gujarat, adjoining north Konkan coasts and adjoining sea areas, over many parts of eastcentral, northeast Arabian Sea and adjoining areas.

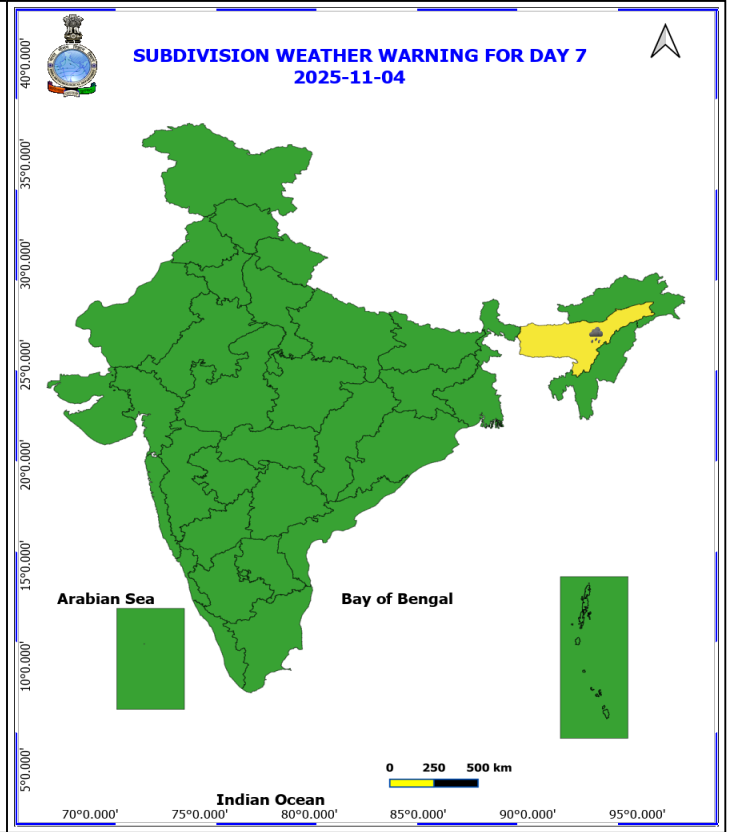
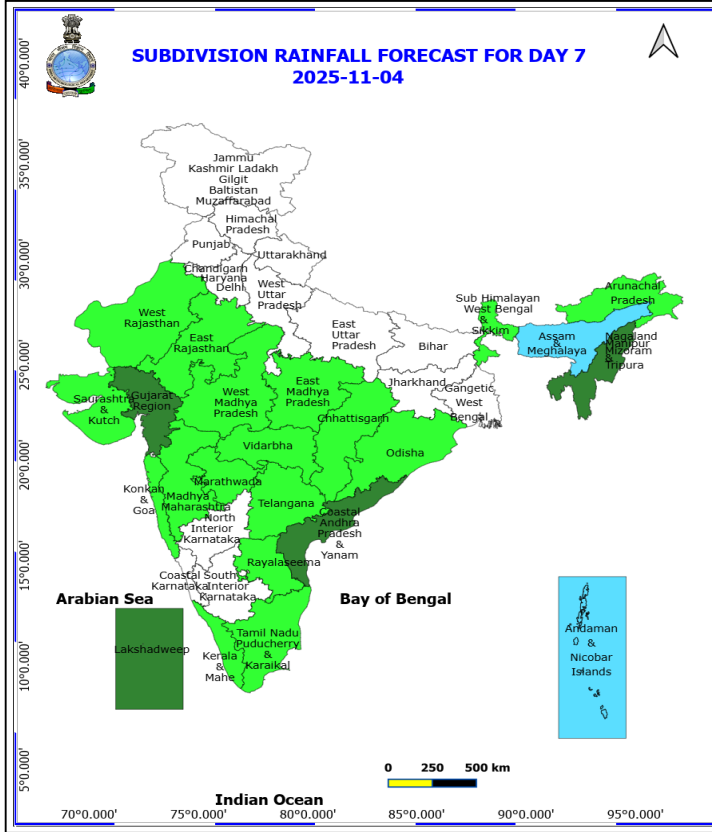
Squally weather with wind speed 45 kmph to 55 kmph gusting to 65 kmph likely to prevail along and off north Gujarat and adjoining south Gujarat coast and adjoining sea areas, over some parts of eastcentral, northeast Arabian Sea.



**3 November (Day 6)**

❖ Heavy Rainfall likely at isolated places over Assam & Meghalaya.

**No Fishermen Warning**



**4 November (Day 7)**

❖ Heavy Rainfall likely at isolated places over Assam & Meghalaya.

**No Fishermen Warning**

## Flash Flood Warnings

**24 hours Outlook for the Flash Flood Risk (FFR) till 0530 IST of 30-10-2025 :**

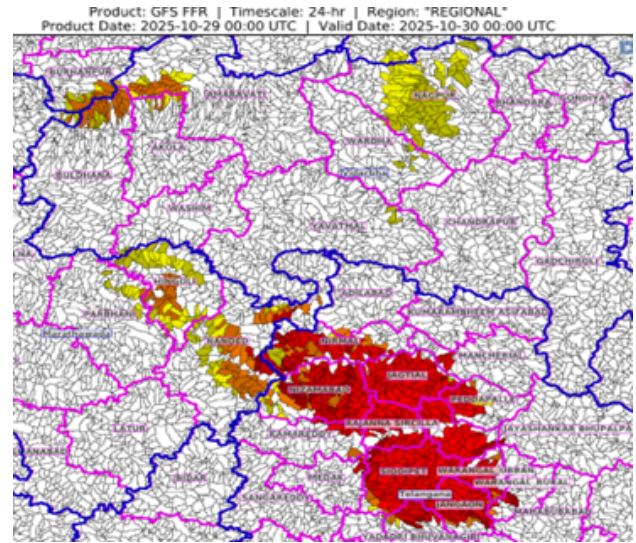
**Low to Moderate flash flood risk** likely over few watersheds & neighbourhoods of following Met Sub-divisions during next 24 hours.

**Telangana** – Adilabad, Nirmal, Nizamabad, Jagtial, Kamareddy, Karimnagar, Siddipet, Warangal Urban, Jangaon, Yadadri Bhuvanagari, Warangal Rural, Mahabubabad, Medak, Medchal Malkajgiri and Peddapalle districts.

**Adjoining Marathawada** – Nanded, Hingoli and Parbhani districts.

**Vidarbha** – Buldhana, Akola, Amaravati, Wardha, Yavatmal and Nagpur districts.

Surface runoff/ Inundation may occur at some fully saturated soils & low-lying areas over Area of Concern (AoC) as shown in map due to expected rainfall occurrence in next 24 hours.



**\*Red color warning does not mean "Red Alert" Red color warning means "Take Action"**

Forecast and warning for any day is valid from 0830 hours IST of day till 0830 hours IST of next day

For more details kindly visit <https://mausam.imd.gov.in> or contact 011-2434-4599

(Service to the nation since 1875)



## Table-1

### 7 Days Rainfall Forecast

| S.No. | Subdivision                  | 29- Oct | 30- Oct | 31- Oct | 1- Nov | 2- Nov | 3- Nov | 4- Nov |
|-------|------------------------------|---------|---------|---------|--------|--------|--------|--------|
|       |                              | Day 1   | Day 2   | Day 3   | Day 4  | Day 5  | Day 6  | Day 7  |
| 1     | ANDAMAN & NICOBAR ISLANDS    | FWS     | WS      | WS      | WS     | FWS    | FWS    | FWS    |
| 2     | ARUNACHAL PRADESH            | ISOL    | SCT     | WS      | WS     | FWS    | ISOL   | ISOL   |
| 3     | ASSAM & MEHGHALAYA           | SCT     | FWS     | WS      | WS     | WS     | FWS    | FWS    |
| 4     | N. M. M. & T.                | ISOL    | SCT     | SCT     | SCT    | SCT    | SCT    | SCT    |
| 5     | S.H. WEST BENGAL & SIKKIM    | SCT     | FWS     | WS      | FWS    | ISOL   | ISOL   | ISOL   |
| 6     | GANGETIC WEST BENGAL         | FWS     | WS      | FWS     | SCT    | ISOL   | DRY    | DRY    |
| 7     | ODISHA                       | WS      | FWS     | SCT     | ISOL   | ISOL   | ISOL   | ISOL   |
| 8     | JHARKHAND                    | WS      | WS      | SCT     | ISOL   | DRY    | DRY    | DRY    |
| 9     | BIHAR                        | SCT     | FWS     | FWS     | SCT    | ISOL   | DRY    | DRY    |
| 10    | EAST UTTAR PRADESH           | ISOL    | FWS     | SCT     | ISOL   | DRY    | DRY    | DRY    |
| 11    | WEST UTTAR PRADESH           | DRY     | ISOL    | ISOL    | DRY    | DRY    | DRY    | DRY    |
| 12    | UTTARAKHAND                  | DRY     | DRY     | DRY     | DRY    | DRY    | DRY    | DRY    |
| 13    | HARYANA, CHD & DELHI         | DRY     | DRY     | DRY     | DRY    | DRY    | DRY    | DRY    |
| 14    | PUNJAB                       | DRY     | DRY     | DRY     | DRY    | DRY    | DRY    | DRY    |
| 15    | HIMACHAL PRADESH             | DRY     | DRY     | DRY     | DRY    | DRY    | DRY    | DRY    |
| 16    | JAMMU AND KASHMIR AND LADAKH | DRY     | DRY     | DRY     | DRY    | DRY    | DRY    | DRY    |
| 17    | WEST RAJASTHAN               | ISOL    | ISOL    | ISOL    | DRY    | DRY    | ISOL   | ISOL   |
| 18    | EAST RAJASTHAN               | ISOL    | ISOL    | ISOL    | ISOL   | ISOL   | ISOL   | ISOL   |
| 19    | WEST MADHYA PRADESH          | SCT     | SCT     | SCT     | ISOL   | ISOL   | ISOL   | ISOL   |
| 20    | EAST MADHYA PRADESH          | FWS     | WS      | FWS     | SCT    | ISOL   | ISOL   | ISOL   |
| 21    | GUJRAT REGION                | FWS     | WS      | FWS     | SCT    | SCT    | SCT    | SCT    |
| 22    | SAURASHTRA & KUTCH           | FWS     | WS      | FWS     | SCT    | SCT    | ISOL   | ISOL   |
| 23    | KONKAN & GOA                 | WS      | FWS     | SCT     | ISOL   | ISOL   | ISOL   | ISOL   |
| 24    | MADHYA MAHARASHTRA           | FWS     | SCT     | ISOL    | ISOL   | ISOL   | ISOL   | ISOL   |
| 25    | MARATHWADA                   | FWS     | ISOL    | ISOL    | ISOL   | ISOL   | ISOL   | ISOL   |
| 26    | VIDARBHA                     | WS      | FWS     | SCT     | ISOL   | ISOL   | ISOL   | ISOL   |
| 27    | CHATTISGARH                  | WS      | FWS     | SCT     | ISOL   | ISOL   | ISOL   | ISOL   |
| 28    | COASTAL ANDHRA PRADESH       | WS      | FWS     | ISOL    | ISOL   | ISOL   | SCT    | SCT    |
| 29    | TELANGANA                    | FWS     | SCT     | ISOL    | ISOL   | ISOL   | ISOL   | ISOL   |
| 30    | RAYALASEEMA                  | WS      | SCT     | ISOL    | ISOL   | ISOL   | ISOL   | ISOL   |
| 31    | TAMILNADU & PUDUCHERRY       | ISOL    | ISOL    | ISOL    | ISOL   | ISOL   | ISOL   | ISOL   |
| 32    | COSTAL KARNATAKA             | WS      | SCT     | ISOL    | ISOL   | DRY    | DRY    | DRY    |
| 33    | NORTH INTERIOR KARNATAKA     | FWS     | ISOL    | DRY     | DRY    | DRY    | DRY    | DRY    |
| 34    | SOUTH INTERIOR KARNATAKA     | ISOL    | ISOL    | DRY     | DRY    | DRY    | DRY    | DRY    |
| 35    | KERALA                       | FWS     | SCT     | ISOL    | ISOL   | ISOL   | ISOL   | ISOL   |
| 36    | LAKSHDWEEP                   | FWS     | SCT     | SCT     | SCT    | SCT    | SCT    | SCT    |

| Legend | Category                      | %Stations |
|--------|-------------------------------|-----------|
| WS     | Widespread/Most Places        | 76-100    |
| FWS    | Fairly Widespread/Many Places | 51-75     |
| SCT    | Scattered/ A Few Places       | 26-50     |
| ISOL   | Isolated Places               | 1-25      |
| DRY    | No Rain                       | 0         |

\*Red color warning does not mean "Red Alert" Red color warning means "Take Action"  
Forecast and warning for any day is valid from 0830 hours IST of day till 0830 hours IST of next day  
For more details kindly visit <https://mausam.imd.gov.in> or contact 011-2434-4599

(Service to the nation since 1875)

Fig. 1: Maximum Temperatures Dated 2025-10-28

Fig. 2: Departure of Maximum Temp. Dated 2025-10-28

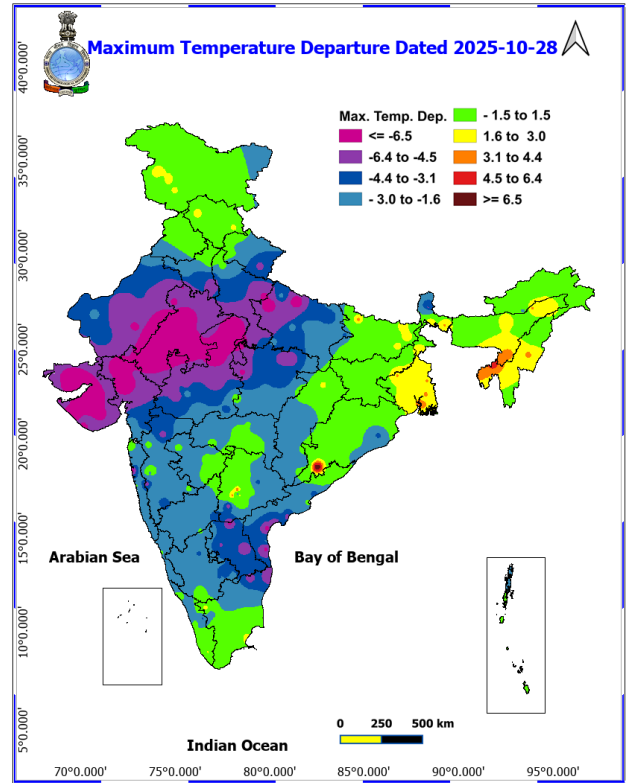
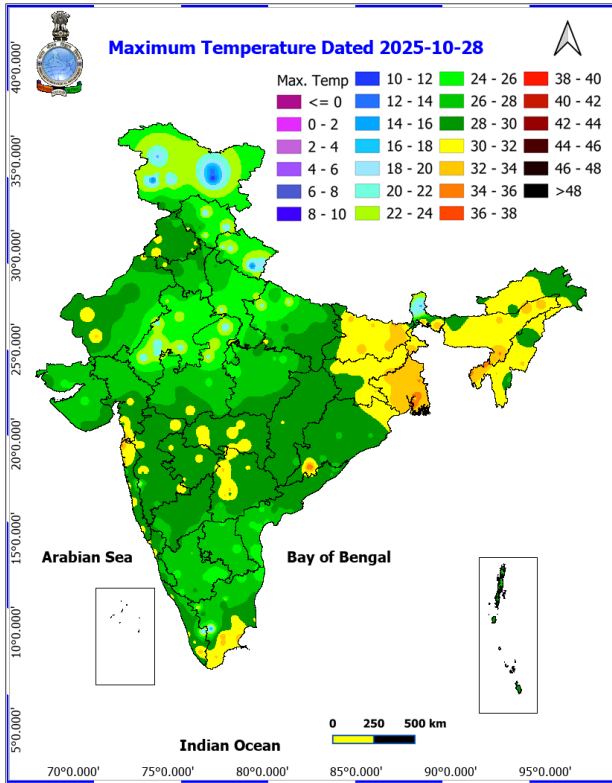
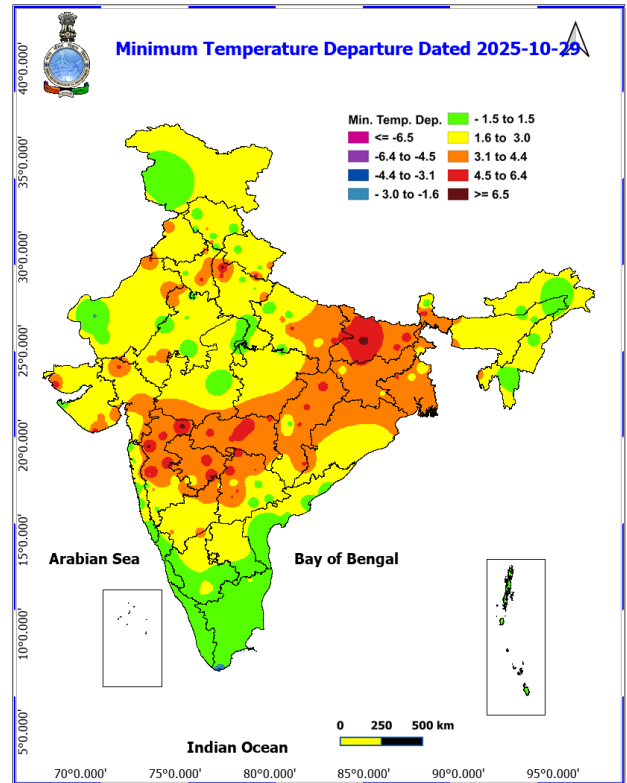
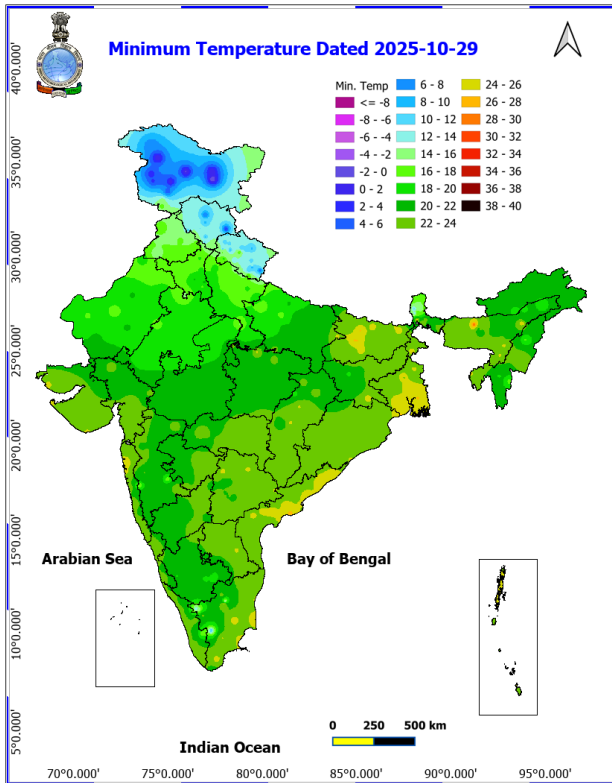


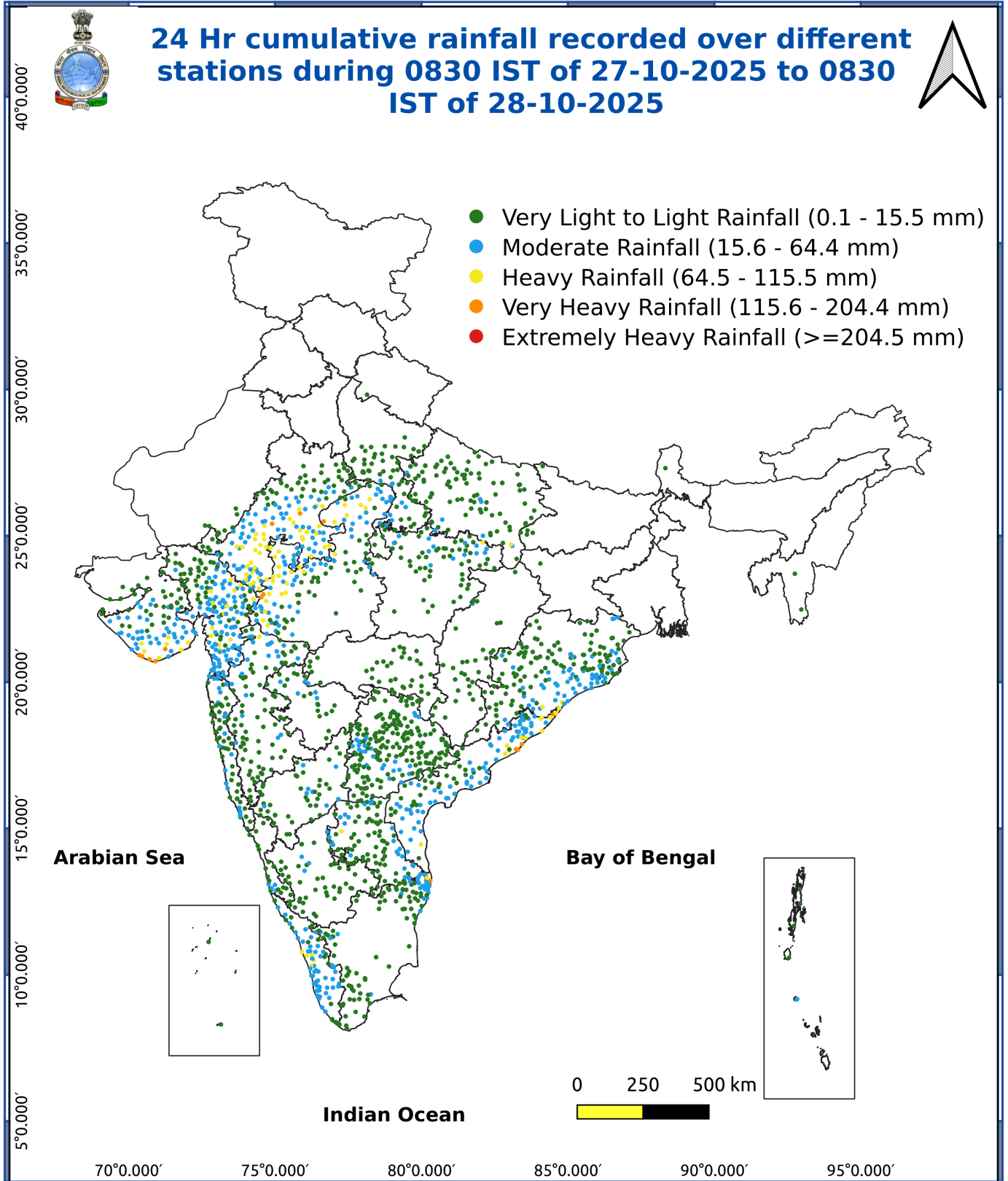
Fig. 3: Minimum Temperatures Dated 2025-10-29

Fig. 4: Departure of Minimum Temp. Dated 2025-10-29



**\*Red color warning does not mean "Red Alert" Red color warning means "Take Action"**  
Forecast and warning for any day is valid from 0830 hours IST of day till 0830 hours IST of next day  
For more details kindly visit <https://mausam.imd.gov.in> or contact 011-2434-4599

(Service to the nation since 1875)



### Impact & Action Suggested due to

**Extremely heavy rainfall ( $\geq 21$  cm)** at isolated places over Odisha on 29<sup>th</sup> October.

**Very heavy rainfall (12-20 cm)** at isolated places over Coastal Andhra Pradesh & Yanam, Rayalaseema, Telangana, Vidarbha and Chhattisgarh on 29<sup>th</sup>; East Madhya Pradesh & East Rajasthan on 30<sup>th</sup>; Bihar on 30<sup>th</sup> & 31<sup>st</sup>; Sub-Himalayan West Bengal & Sikkim on 31<sup>st</sup>; Saurashtra & Kutch during 29<sup>th</sup>-31<sup>st</sup>; Assam & Meghalaya and Arunachal Pradesh on 31<sup>st</sup> October & 01<sup>st</sup> November.

### Impact Expected

- Localized Flooding of roads, water logging in low lying areas and closure of underpasses mainly in urban areas of the above region.
- Occasional reduction in visibility due to heavy rainfall.
- Disruption of traffic in major cities due to water logging in roads leading to increased travel time.
- Minor damage to kutcha roads.
- Possibilities of damage to vulnerable structure.
- Localized Landslides/Mudslides/landslips/mudslips/landsinks/mudsinks.
- Damage to horticulture and standing crops in some areas due to inundation.
- It may lead to riverine flooding in some river catchments mainly over Bihar, Jharkhand and West Bengal (for riverine flooding please visit Web page of CWC)

### Action Suggested

- Check for traffic congestion on your route before leaving for your destination.
- Follow any traffic advisories that are issued in this regard.
- Avoid going to areas that face the water logging problems often.
- Avoid staying in vulnerable structure.

### Agromet advisories for various parts of the country

#### Agromet advisories for likely impact of Heavy / Heavy to Very Heavy / Extremely Heavy Rainfall

(Based on the IBF and advisories issued by different AMFUs)

In **Andhra Pradesh**, postpone harvesting of groundnut and maize crops during heavy rainfall periods and store the already harvested produce in safe places. Drain out excess water from fields of rice, maize, sugarcane, pigeon pea, black gram, green gram, finger millet, cotton, groundnut, turmeric, ginger, vegetables and plantations of banana, mango, cashew, coconut and arecanut. Avoid sowing of *rabi* crops (*rabi* maize, Bengal gram etc.) until the soil moisture reaches at optimum level.

In **Telangana**, harvest matured cotton crop immediately and store the produce in safer places. Cover the already harvested produce of maize and soybean crops lying on the fields with tarpaulin or shift to a safer place. Make arrangements to drain out excess water from fields of rice, cotton, pigeon pea, green gram, groundnut, turmeric and vegetables.

In **Tamil Nadu**, harvest matured rice and groundnut crops only during fair weather and store the harvested produce of rice, groundnut and harvested banana bunches in safer places. Make arrangements to drain out excess water from fields of rice, groundnut, sugarcane, cotton, black gram, maize, turmeric and vegetables and plantations of coconut, banana and black pepper to avoid water stagnation. Avoid transplanting or direct sowing of rice during heavy rainfall.

In **Kerala**, harvest matured rice crop immediately and keep the produce in safe places. Ensure adequate drainage facilities in fields of rice, ginger, vegetables and plantations of banana, coconut, arecanut, cardamom and black pepper.

**\*Red color warning does not mean "Red Alert" Red color warning means "Take Action"**

Forecast and warning for any day is valid from 0830 hours IST of day till 0830 hours IST of next day

For more details kindly visit <https://mausam.imd.gov.in> or contact 011-2434-4599

(Service to the nation since 1875)

In **Coastal Karnataka**, postpone harvesting of rice during heavy rainfall periods and shift the already harvested produce to safer places.

In **Chhattisgarh**, postpone harvesting of rice, minor millets, maize, black gram, horse gram, groundnut and pigeon pea crops during heavy rainfall periods and keep the already harvested produce at safer places. Make arrangements to drain out excess water from standing crop fields.

In **Odisha**, postpone harvesting of rice, black gram, green gram, maize and vegetable crops during heavy rainfall periods and store the already harvested produce in safe places. Drain out excess water from fields of rice, black gram, green gram, pigeon pea, maize, groundnut, cotton, sugarcane and vegetables and fruit orchards. Postpone sowing / planting of *rabi* crops (*rabi* pulses, vegetables etc.) till cessation of rains.

In **West Bengal**, make arrangements to drain out excess water from fields of rice, groundnut, pulses, ginger and vegetables.

In **Jharkhand**, harvest matured rice crop only during fair weather and store the harvested produce in safer places.

In **Bihar**, harvest matured crops of rice and maize and shift the produce to safer places.

In **East Uttar Pradesh**, harvest matured crops of rice and vegetables only during fair weather / non-rainy period and store the produce in safe places.

In **Gujarat**, harvest the matured crops of rice, groundnut, soybean, black gram, green gram, sesame, maize, pearl millet and vegetables (tomato, brinjal, chilli, okra, cucurbits etc.) only during fair weather and store the produce in safe places. Drain out excess water from standing crop fields.

In **Madhya Pradesh**, harvest matured crops of rice, maize and soybean during fair weather only and shift the produce to safer places.

In **Konkan**, keep the harvested produce of rice and finger millet in safer places. In **Madhya Maharashtra**, store the harvested produce of rice, soybean, maize, groundnut and pearl millet in safe places. In **Marathwada**, shift the harvested produce of soybean and cotton to safer places. In **Vidarbha**, harvest the matured crops of rice (early maturing varieties), soybean and cotton only during fair weather and keep the harvested produce at safer places.

### Livestock / Fishery

Keep the animals inside the shed during heavy rainfall and provide them balanced feed.

Store feed and fodder in a safe place to prevent spoilage.

Construct an outlet with proper netting around the ponds to drain out excess water, thereby preventing fish from escaping in case of overflow.

### Agromet advisories for likely impact of Thunderstorm / Gusty Winds / Squally Winds

(Based on the IBF and advisories issued by different AMFUs)

Provide mechanical support to horticultural crops and staking or support to vegetables and young fruit plants / fruit-bearing plants to avoid lodging due to strong winds.

Tie the harvested crops properly and cover them to minimise the risk of displacement due to strong surface winds.

## LEGENDS

- 1 अंडमान और निकोबार द्वीप समुह
- 2 अरुणाचल प्रदेश
- 3 असम और मेघालय
- 4 नागालैंड मनीपुर मीजोरम और त्रिपुरा
- 5 उप हिमालय पश्चिम बंगाल एवं सिक्किम
- 6 पश्चिम बंगाल
- 7 ओडिसा
- 8 झारखंड
- 9 बिहार
- 10 पूर्वी उत्तर प्रदेश
- 11 पश्चिम उत्तर प्रदेश
- 12 उत्तराखंड
- 13 हरियाणा चंडिगढ़ एवं दिल्ली
- 14 पंजाब
- 15 हिमाचल प्रदेश
- 16 जम्मू एवं कश्मीर एवं लद्दाख
- 17 पश्चिम राजस्थान
- 18 पूर्वी राजस्थान
- 19 पश्चिम मध्य प्रदेश
- 20 पूर्वी मध्य प्रदेश
- 21 गुजरात क्षेत्र
- 22 सौराष्ट्र एवं कच्छ
- 23 कोंकण एवं गोवा
- 24 मध्य महाराष्ट्र
- 25 मराठावाडा
- 26 विदर्भ
- 27 छत्तीसगढ़
- 28 तटीय आंध्र प्रदेश एवं यनम
- 29 तेलंगाना
- 30 रायलसीमा
- 31 तमिलनाडु, पुदुचेरी एवं कराईकल
- 32 तटिय कर्नाटक
- 33 आंतरिक उत्तरी कर्नाटक
- 34 आंतरिक दक्षिणी कर्नाटक
- 35 केरल एवं माहे
- 36 लक्षद्वीप



1. Andaman & Nicobar Islands
2. Arunachal Pradesh
3. Assam & Meghalaya
4. Nagaland, Manipur, Mizoram & Tripura
5. Sub-Himalayan West Bengal & Sikkim
6. Gangetic West Bengal
7. Orissa
8. Jharkhand
9. Bihar
10. East Uttar Pradesh
11. West Uttar Pradesh
12. Uttarakhand
13. Haryana, Chd & Delhi
14. Punjab
15. Himachal Pradesh
16. Jammu & Kashmir and Ladakh
17. West Rajasthan
18. East Rajasthan
19. West Madhya Pradesh
20. East Madhya Pradesh
21. Gujarat
22. Saurashtra
23. Konkan & Goa
24. Madhya Maharashtra
25. Marathawada
26. Vidharbha
27. Chhattisgarh
28. Coastal Andhra Pradesh & Yanam
29. Telangana
30. Rayalaseema
31. Tamilnadu, Puducherry & Karaikal
32. Coastal Karnataka
33. North Interior Karnataka
34. South Interior Karnataka
35. Kerala & Mahe
36. Lakshadweep

## SPATIAL DISTRIBUTION (% of Stations reporting)

| % Stations | Category                             | % Stations | Category                      |
|------------|--------------------------------------|------------|-------------------------------|
| 76-100     | Widespread (WS/ Most Places)         | 26-50      | Scattered (SCT/ A Few Places) |
| 51-75      | Fairly Widespread (FWS/ Many Places) | 1-25       | Isolated (ISOL)               |

### Subdivision Colour

- NO WARNING
- WATCH (BE UPDATED)
- ALERT (BE PREPARED TO TAKE ACTION)
- WARNING (TAKE ACTION)

### Probabilistic Forecast

| Terms       | Probability of Occurrence (%) |
|-------------|-------------------------------|
| Unlikely    | < 25                          |
| Likely      | 25 - 50                       |
| Very Likely | 50 - 75                       |
| Most Likely | > 75                          |

- |                          |                 |                      |                    |
|--------------------------|-----------------|----------------------|--------------------|
| Heavy Rain               | Very Heavy Rain | Extremely Heavy Rain | Heavy Snow         |
| Thunderstorm & Lightning | Hailstorm       | Dust Storm           | Dust Raising Winds |
| Strong surface winds     | Heat Wave       | Hot Day              | Warm Night         |
| Cold Wave                | Cold Day        | Ground Frost         | Fog                |
| Hot & Humid              |                 |                      |                    |

\*Red color warning does not mean "Red Alert" Red color warning means "Take Action"

Forecast and warning for any day is valid from 0830 hours IST of day till 0830 hours IST of next day

For more details kindly visit <https://mausam.imd.gov.in> or contact 011-2434-4599

(Service to the nation since 1875)

## LEGENDS

### WARNING

|                         |
|-------------------------|
| WARNING (TAKE ACTION)   |
| ALERT ( BE PREPARED)    |
| WATCH (BE UPDATED)      |
| NO WARNING ( NO ACTION) |

### Probabilistic Forecast

| Terms       | Probability of Occurrence (%) |
|-------------|-------------------------------|
| Unlikely    | < 25                          |
| Likely      | 25 - 50                       |
| Very Likely | 50 - 75                       |
| Most Likely | > 75                          |



Heavy: 64.5 to 115.5 mm/cm \*  
Very Heavy: 115.6 to 204.4 mm/cm\*  
Extremely Heavy: > 204.4 mm/cm \*



When maximum temperature of a station reaches  $\geq 40^{\circ}\text{C}$  for plains and  $\geq 30^{\circ}\text{C}$  for hilly regions  
(a) Based on Departure from normal

Heat Wave: Maximum Temperature Departure from normal  $4.5^{\circ}\text{C}$  to  $6.4^{\circ}\text{C}$ .  
Severe Heat Wave: Maximum Temperature Departure from normal  $\geq 6.5^{\circ}\text{C}$

(b). Based on Actual maximum temperature

Heat Wave: When actual maximum temperature  $\geq 45^{\circ}\text{C}$ .  
Severe Heat Wave: When actual maximum temperature  $\geq 47^{\circ}\text{C}$

(c). Criteria for heat wave for coastal stations

When maximum temperature departure is  $> 4.5^{\circ}\text{C}$  from normal. Heat Wave may be described provided maximum temperature  $\geq 37^{\circ}\text{C}$



When maximum temperature remains  $40^{\circ}\text{C}$

Warm Night: When minimum temperature departure  $4.5^{\circ}\text{C}$  to  $6.4^{\circ}\text{C}$ .  
Severe Warm Night: When minimum temperature departure  $> 6.4^{\circ}\text{C}$ .



When minimum temperature of a station  $\leq 10^{\circ}\text{C}$  for plains and  $\leq 0^{\circ}\text{C}$  for hilly regions.

(a). Based on departure

Cold Wave: Minimum Temperature Departure from normal  $-4.5^{\circ}\text{C}$  to  $-6.4^{\circ}\text{C}$ .  
Severe Cold Wave: Minimum Temperature Departure from normal  $\leq -6.5^{\circ}\text{C}$

(b) Based on actual Minimum Temperature (for Plains only)

Cold Wave : When Minimum Temperature is  $\leq 4.0^{\circ}\text{C}$   
Severe Cold Wave: When Minimum Temperature is  $\leq 2.0^{\circ}\text{C}$

(c) For Coastal Stations

When Minimum Temperature departure is  $\leq -4.5^{\circ}\text{C}$  & actual Minimum Temperature is  $\leq 15^{\circ}\text{C}$



When minimum temperature of a station  $\leq 10^{\circ}\text{C}$  for plains and  $\leq 0^{\circ}\text{C}$  for hilly regions  
Based on departure

Cold Day: Maximum Temperature Departure from normal  $-4.5^{\circ}\text{C}$  to  $-6.4^{\circ}\text{C}$ .  
Severe Cold Day: Maximum Temperature Departure from normal  $\leq -6.5^{\circ}\text{C}$



Phenomenon of small droplets suspended in air and the horizontal visibility  $< 1\text{km}$

Moderate Fog: When the visibility between 500-200 metres  
Dense Fog: when the visibility between 50- 200 metres  
Very Dense Fog: when the visibility  $< 50$  metres



Sudden electrical discharges manifested by a flash of light (Lightning) and a sharp rumbling sound (thunder)



An ensemble of particles of dust or sand energetically lifted to great heights by a strong and turbulent wind.



Ice deposits on ground

Air temperature  $\leq 4^{\circ}\text{C}$  ( over Plains)



A strong wind that rises suddenly, lasts for atleast 1 minute.

Moderate: Wind speed 52-61 kmph  
Severe: Wind speed 62-87 kmph  
Very Severe: Wind speed  $> 87$  kmph



Effect of various waves in the sea over specific area

Rough to very rough: Wind speed 41-62 kmph (22-33 knots) & Wave height 2.5-6 metre  
High to very high: Wind speed 63-117 kmph ( 34-63 knots) & Wave height 6-14 metre  
Phenomenal: Wind speed  $> 117$  kmph ( $> 63$  knots) & Wave height  $> 14$  metre



Cyclonic Storm: Wind speed 62-87 kmph (34-47 knots)  
Severe Cyclonic Storm: Wind speed 88-117 kmph (48-63 knots)  
Very Severe Cyclonic Storm: Wind speed 118-165 kmph (64 - 89 knots)  
Extremely Severe Cyclonic Storm: Wind speed 166-220 kmph (90 -119 knots)  
Super Cyclone Storm: Wind speed  $> 220$  kmph ( $> 119$  knots)

\*Red color warning does not mean "Red Alert" Red color warning means "Take Action"

Forecast and warning for any day is valid from 0830 hours IST of day till 0830 hours IST of next day

For more details kindly visit <https://mausam.imd.gov.in> or contact 011-2434-4599

(Service to the nation since 1875)