

2025-10-08

Time of Issue: 08:15:00 hours IST
(Morning)

ALL INDIA WEATHER SUMMARY AND FORECAST BULLETIN

Significant Weather Features

Weather warnings:

South Peninsular India:

- Light to moderate rain/thunderstorm at many/some places with isolated **heavy rainfall** likely over Tamil Nadu, South Interior Karnataka during 08th-12th; Kerala & Mahe during 08th-13th; Lakshadweep, Rayalaseema and Coastal Karnataka during 08th-11th October.
- Strong surface winds (speed reaching 30-40 kmph) over Coastal Andhra Pradesh & Yanam on 07th October.
- **Thunderstorm with gusty wind (speed reaching 30-40 kmph)** likely over Coastal & South Interior Karnataka, Telangana during next 5 days; **with lightning** over Tamil Nadu, Kerala & Mahe, Lakshadweep, North Interior Karnataka, Coastal Andhra Pradesh & Yanam and Rayalaseema during next 5 days.

East & Central India:

- Light to moderate rainfall/thunderstorm at many/some places with isolated **thunderstorm & gusty winds (speed reaching 30-40 kmph)** very likely over Sub-Himalayan West Bengal & Sikkim, Gangetic West Bengal, Odisha during next 3-4 days; Bihar, Jharkhand on 08th; **with lightning** over East Madhya Pradesh & Chhattisgarh on 08th October.

Northeast India:

- Light/moderate rain/thunderstorm at some/isolated places with isolated **heavy rainfall** likely over Assam & Meghalaya, Nagaland, Manipur, Mizoram & Tripura during 08th-10th; Arunachal Pradesh on 09th & 10th October.

West India:

- Light to moderate rain/thunderstorm at some places with isolated **heavy rainfall** likely over Konkan & Goa and Madhya Maharashtra on 08th October.
- Thunderstorm with lightning likely over Maharashtra region during next 4 days.

*Red color warning does not mean "Red Alert" Red color warning means "Take Action"

Forecast and warning for any day is valid from 0830 hours IST of day till 0830 hours IST of next day

For more details kindly visit <https://mausam.imd.gov.in> or contact 011-2434-4599

(Service to the nation since 1875)

Main Weather Observations:

❖ **Rainfall distribution** (from 0830 hours IST to 1730 hours IST of yesterday): **at most places** over Uttarakhand and Himachal Pradesh; **at many places** over West Uttar Pradesh, Odisha, Sub-himalayan West Bengal & Sikkim, Madhya Maharashtra, Assam & Meghalaya, Nagaland, Manipur, Mizoram & Tripura, Haryana Chandigarh & Delhi, Tamilnadu Puducherry & Karaikal, Saurashtra & Kutch, East Rajasthan, Jammu & Kashmir and Ladakh, West Madhya Pradesh, Konkan & Goa, Chhattisgarh, Andaman & Nicobar Islands, South Interior Karnataka, East Uttar Pradesh, Telangana, Gangetic West Bengal, Punjab and Coastal Andhra Pradesh & Yanam; **Dry** over rest of the country.

❖ **Significant rainfall recorded(in cm)** (from 0830 hours IST to 1730 hours IST of yesterday): **Saurashtra & Kutch:** Mahuva (dist Bhavnagar) 6; **West Uttar Pradesh:** Bareilly (dist Bareilly) 4, Aligarh (dist Aligarh) 3; **Coastal Andhra Pradesh & Yanam:** Tuni (dist Kakinada) 4; **Himachal Pradesh:** Una (dist Una) 4, Sundernagar (dist Mandi) 3, Mandi (dist Mandi), Shimla- Airport (dist Shimla), Kangra (dist Kangra) 2 Each; **Punjab:** Patiala (dist Patiala) 4, Ludhiana (dist Ludhiana) 2; **Haryana, Chandigarh & Delhi:** Delhi-ridge (dist South Delhi), New Delhi (palam) AP (dist South West Delhi) 4 Each; **Uttarakhand:** Pantnagar (dist Udham Singh Nagar) 4, Mukteswar (kumaun) (dist Nainital) 3; **Odisha:** Chandbali (dist Bhadrak) 4; **Gangetic West Bengal:** Contai (dist Purba Medinipur) 3; **Telangana:** Medak (dist Medak) 3; **East Uttar Pradesh:** Hardoi (dist Hardoi) 2.

❖ **Minimum Temperature Departures (as on 07-10-2025):** **markedly above normal(> 5.1°C)** at isolated places over Assam & Meghalaya, Bihar and East Uttar Pradesh. **appreciably above normal(3.1°C to 5.0°C)** at isolated places over Sub Himalayan West Bengal & Sikkim, Odisha, West Uttar Pradesh, East Madhya Pradesh, Saurashtra & Kutch, Telangana and South Interior Karnataka. **above normal(1.6°C to 3.0°C)** at few places over East Rajasthan, West Madhya Pradesh and Lakshadweep; at isolated places over Nagaland, Manipur, Mizoram & Tripura, Gangetic West Bengal, West Rajasthan, Konkan & Goa, Madhya Maharashtra, Vidarbha and Tamil Nadu, Puducherry & Karaikal. **near normal(-1.5°C to 1.5°C)** at many places over Chhattisgarh and North Interior Karnataka; at most places over Andaman & Nicobar Islands, Arunachal Pradesh, Jharkhand, Gujarat Region, Marathwada, Coastal Andhra Pradesh & Yanam, Rayalaseema, Coastal Karnataka and Kerala & Mahe; at few places over Uttarakhand, Haryana-Chandigarh-Delhi, Punjab and Himachal Pradesh. **The lowest minimum temperature** of 13.5°C was reported at UNA (HIMACHAL PRADESH) over the Plains of India.

❖ **Maximum Temperature Departures (as on 07-10-2025):** **appreciably above normal(3.1°C to 5.0°C)** at few places over Lakshadweep; at isolated places over Coastal Andhra Pradesh & Yanam and Kerala & Mahe. **above normal(1.6°C to 3.0°C)** at few places over Arunachal Pradesh; at isolated places over Assam & Meghalaya, Nagaland, Manipur, Mizoram & Tripura, Madhya Maharashtra, Vidarbha, Tamil Nadu, Puducherry & Karaikal, North Interior Karnataka and South Interior Karnataka. **near normal(-1.5°C to 1.5°C)** at many places over Andaman & Nicobar Islands, Gangetic West Bengal, East Uttar Pradesh and Rayalaseema; at most places over Sub Himalayan West Bengal & Sikkim, Jharkhand, Konkan & Goa, Marathwada, Chhattisgarh, Telangana and Coastal Karnataka; at few places over Bihar and East Madhya Pradesh; at isolated places over Odisha and Saurashtra & Kutch. **The highest maximum temperature** of 37.3°C was reported at NELLORE (ANDHRA PRADESH).

*Red color warning does not mean "Red Alert" Red color warning means "Take Action"

Forecast and warning for any day is valid from 0830 hours IST of day till 0830 hours IST of next day

For more details kindly visit <https://mausam.imd.gov.in> or contact 011-2434-4599

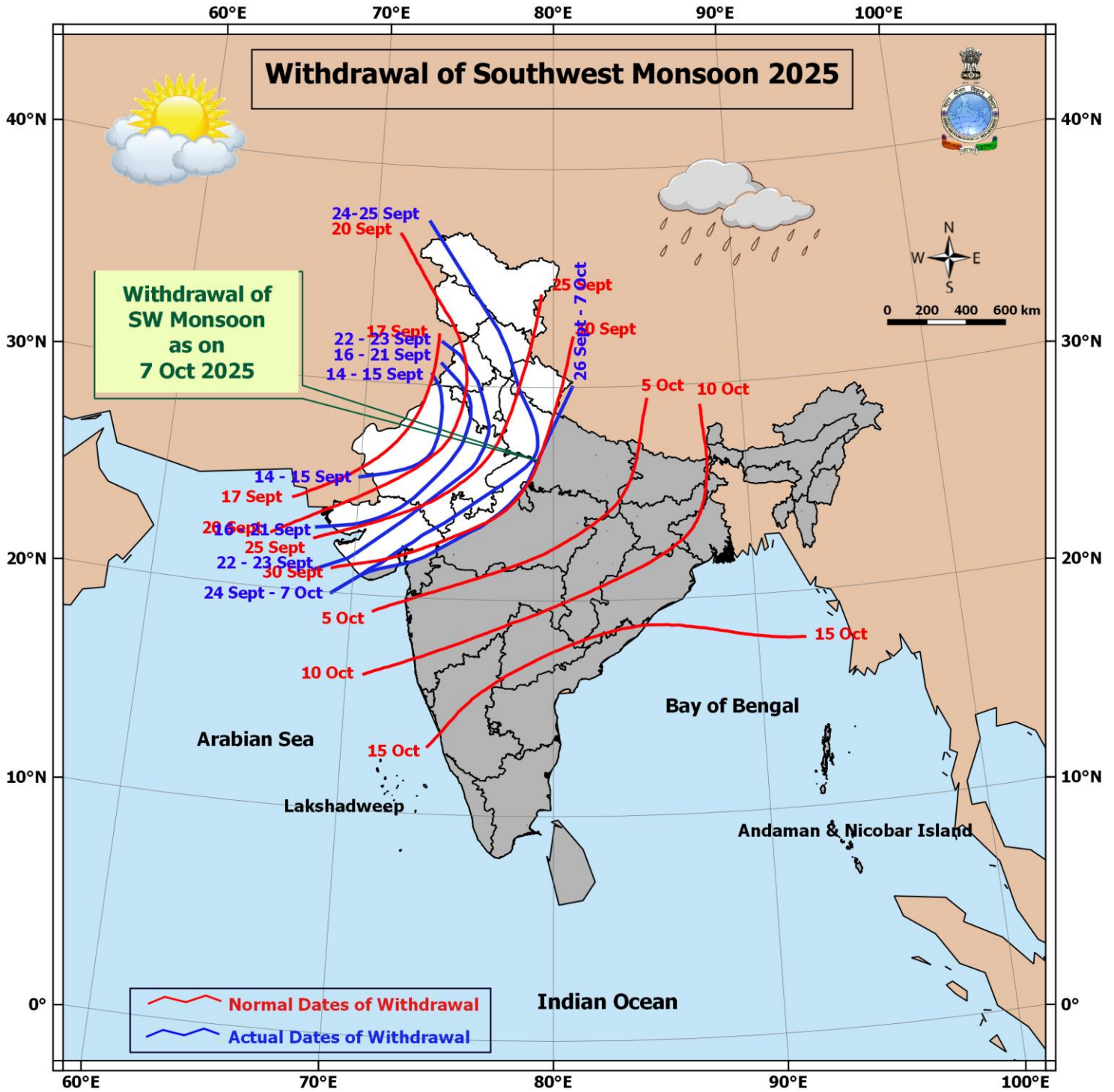
(Service to the nation since 1875)

Meteorological Analysis (Based on 0530 hours IST)

- The **line of withdrawal of southwest monsoon** continues to pass through 20°N/ 69°E, Veraval, Bharuch, Ujjain, Jhansi, Shahjahanpur and 30°N/81°E.
- Conditions are favourable for further withdrawal of southwest monsoon from remaining parts of Gujarat; some more parts of Madhya Pradesh and Uttar Pradesh and some parts of Maharashtra during next 3-4 days.
- The **well-marked low pressure (Remnant of Cyclonic Storm “Shakhti” [Pronunciation: Shakhti])** over westcentral Arabian Sea persists over the same region at 0530 hrs IST of today, the 8th October, 2025. It is likely to continue to move east-southeastwards over westcentral Arabian Sea and weaken further into a low pressure area during next 12 hours.
- The **Western Disturbance** as an **induced low pressure area** now lies over east Haryana & neighbourhood and the associated upper air cyclonic circulation extends upto 5.8 km above mean sea level titling northwestwards with height.
- The **upper air cyclonic circulation** over south Bangladesh & neighbourhood persists and now seen at 0.9 km above mean sea level.
- The **upper air cyclonic circulation** over northeast Assam & neighbourhood at 1.5 km above mean sea level persists.
- The **trough** from north coastal Odisha to east Telangana across interior Odisha, south Chhattisgarh at 1.5 km above mean sea level persists.
- The **upper air cyclonic circulation** over southwest Bay of Bengal off Tamil Nadu coast at 3.1 km above mean sea level persists.
- The **trough** from the cyclonic circulation over southwest Bay of Bengal off Tamil Nadu coast to Coastal Karnataka across Tamil Nadu, Rayalaseema and South Interior Karnataka at 3.1 km above mean sea level persists.
- An **upper air cyclonic circulation** is likely to form over north Bay of Bengal around 10th October, 2025.
- The **upper air cyclonic circulation** over northeast Jharkhand & neighbourhood at 0.9 km above mean sea level has become less marked.

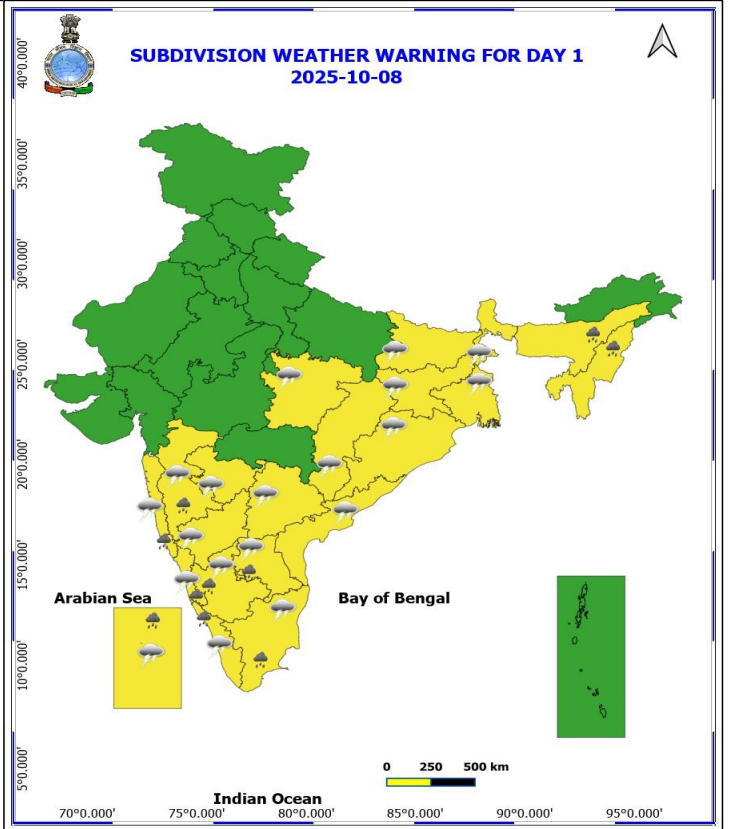
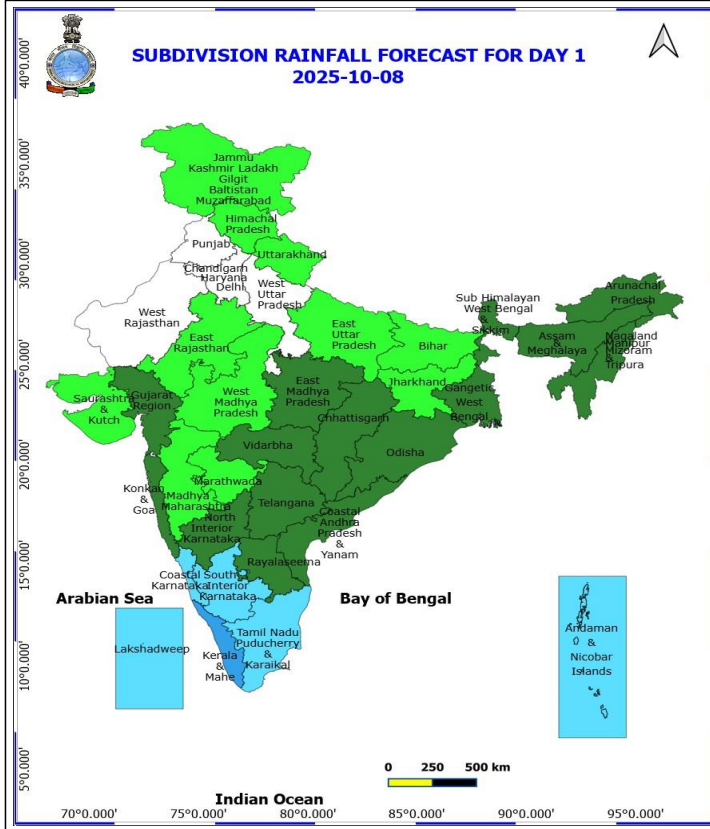
Weather Outlook for subsequent 3 days

- Isolated to scattered rainfall activity likely over South peninsular India & adjoining central and East India.



*Red color warning does not mean "Red Alert" Red color warning means "Take Action"
Forecast and warning for any day is valid from 0830 hours IST of day till 0830 hours IST of next day
For more details kindly visit <https://mausam.imd.gov.in> or contact 011-2434-4599

(Service to the nation since 1875)

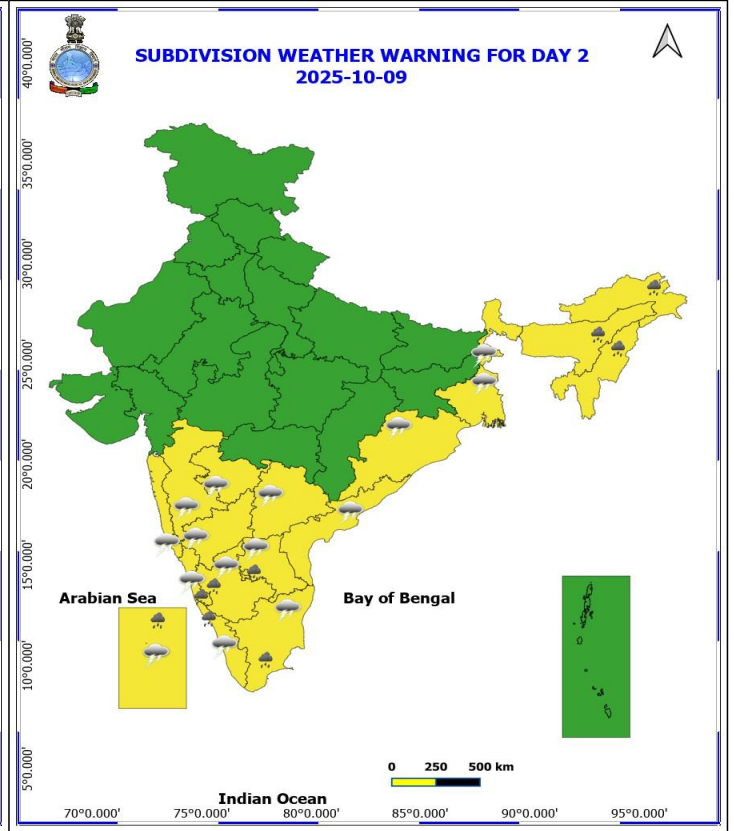
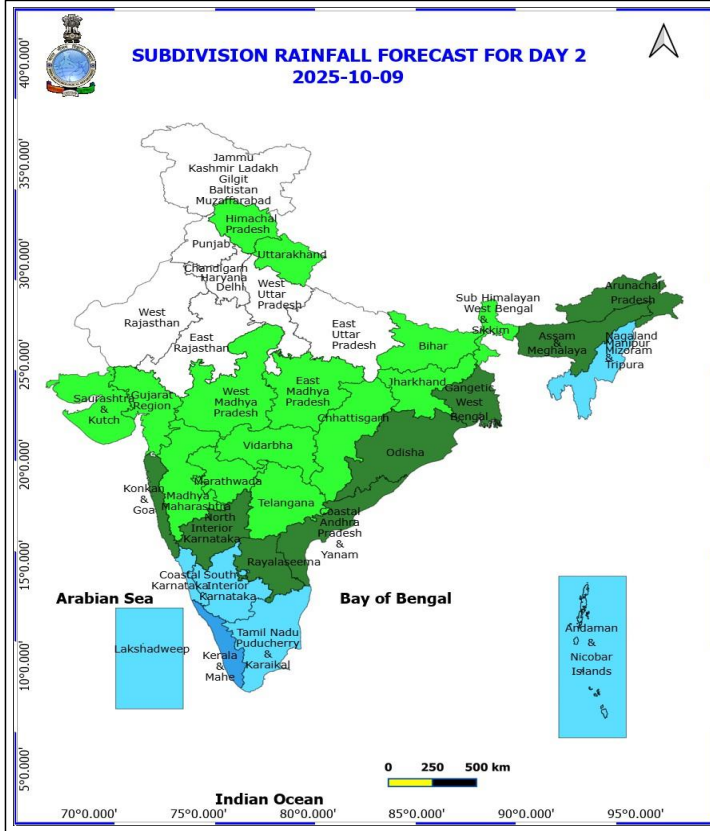


8 October (Day 1)

- ❖ **Heavy Rainfall** very likely at isolated places over Assam & Meghalaya, Coastal Karnataka, Kerala & Mahe, Konkan & Goa, Lakshadweep, Madhya Maharashtra, Nagaland, Manipur, Mizoram and Tripura, Rayalaseema, South Interior Karnataka and Tamil Nadu Puducherry & Karaikal.
- ❖ **Thunderstorm accompanied with lightning & gusty winds(40-50kmph)** very likely at isolated places over South Interior Karnataka.
- ❖ **Thunderstorm accompanied with lightning & gusty winds(30-40kmph)** very likely at isolated places over Bihar, Coastal Karnataka, Odisha, Tamil Nadu Puducherry & Karaikal, Telangana and West Bengal & Sikkim.
- ❖ **Thunderstorm accompanied with Lightning** very likely at isolated places over Andhra Pradesh, Chhattisgarh, East Madhya Pradesh, Jharkhand, Kerala & Mahe, Konkan & Goa, Lakshadweep, Madhya Maharashtra, Marathwada, North Interior Karnataka, Odisha, Tamil Nadu Puducherry & Karaikal and Telangana.
 - Squally weather with wind speed reaching 40 - 50 kmph gusting to 60 kmph likely to prevail along and off Oman coast, many parts of westcentral & northwest Arabian Sea.
 - Squally weather with wind speed reaching 45 - 55 kmph gusting to 65 kmph likely to prevail over some parts of westcentral and northwest Arabian sea.

***Red color warning does not mean "Red Alert" Red color warning means "Take Action"**
Forecast and warning for any day is valid from 0830 hours IST of day till 0830 hours IST of next day
For more details kindly visit <https://mausam.imd.gov.in> or contact 011-2434-4599

(Service to the nation since 1875)



9 October (Day 2)

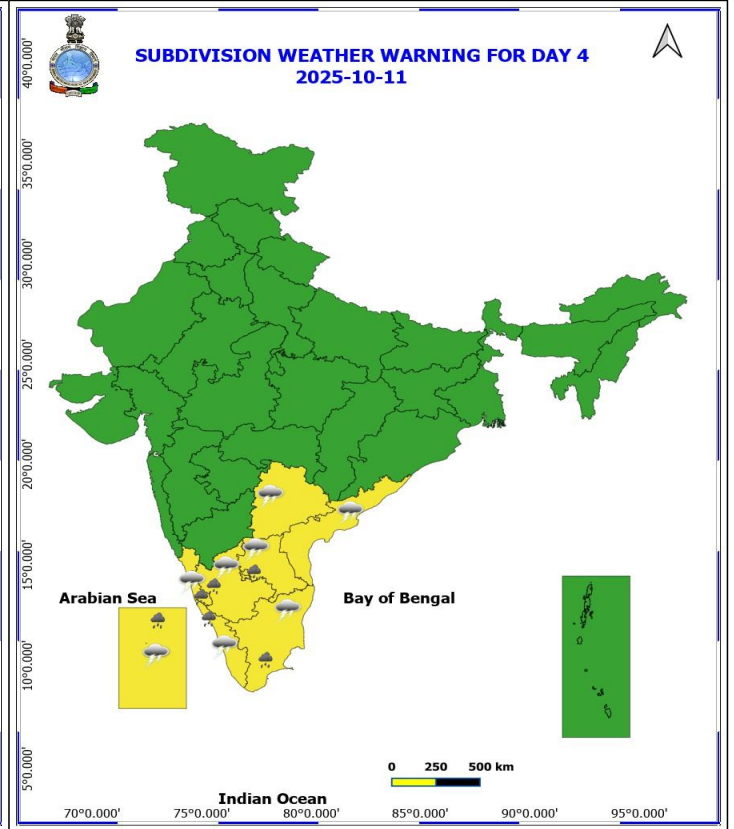
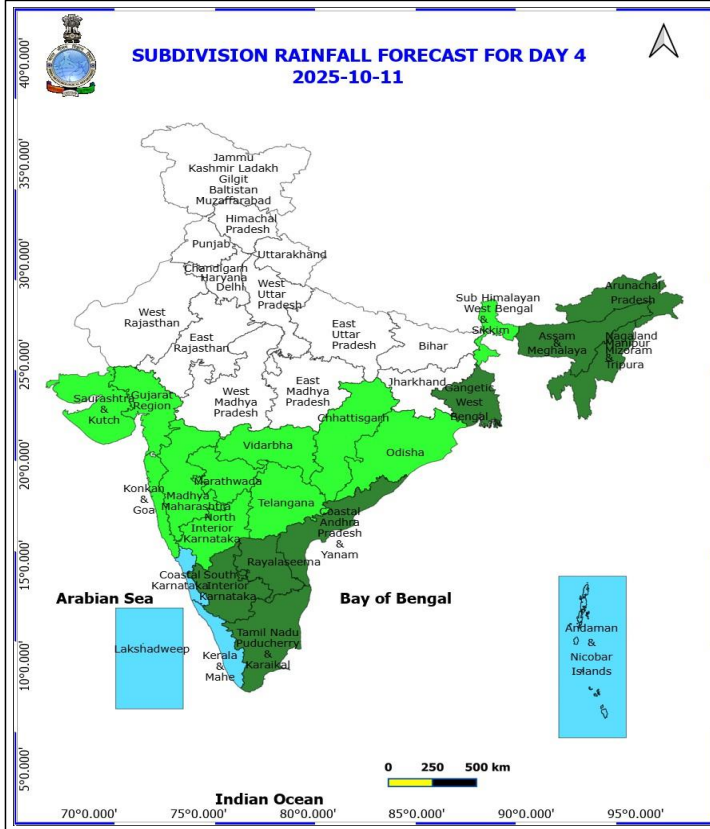
- ❖ **Heavy Rainfall** very likely at isolated places over Arunachal Pradesh, Assam & Meghalaya, Coastal Karnataka, Kerala & Mahe, Lakshadweep, Nagaland, Manipur, Mizoram and Tripura, Rayalaseema, South Interior Karnataka and Tamil Nadu Puducherry & Karaikal.
- ❖ **Thunderstorm accompanied with lightning & gusty winds(40-50kmph)** very likely at isolated places over South Interior Karnataka.
- ❖ **Thunderstorm accompanied with lightning & gusty winds(30-40kmph)** very likely at isolated places over Coastal Karnataka, Odisha, Telangana and West Bengal & Sikkim.
- ❖ **Thunderstorm accompanied with Lightning** very likely at isolated places over Andhra Pradesh, Kerala & Mahe, Konkan & Goa, Lakshadweep, Madhya Maharashtra, Marathwada, North Interior Karnataka, Odisha, Tamil Nadu Puducherry & Karaikal and Telangana.
- ◆ Squally weather with wind speed reaching 40 - 50 kmph gusting to 60 kmph likely to prevail along and off Oman coasts, some parts of westcentral and northwest Arabian Sea.

***Red color warning does not mean "Red Alert" Red color warning means "Take Action"**

Forecast and warning for any day is valid from 0830 hours IST of day till 0830 hours IST of next day

For more details kindly visit <https://mausam.imd.gov.in> or contact 011-2434-4599

(Service to the nation since 1875)



11 October (Day 4)

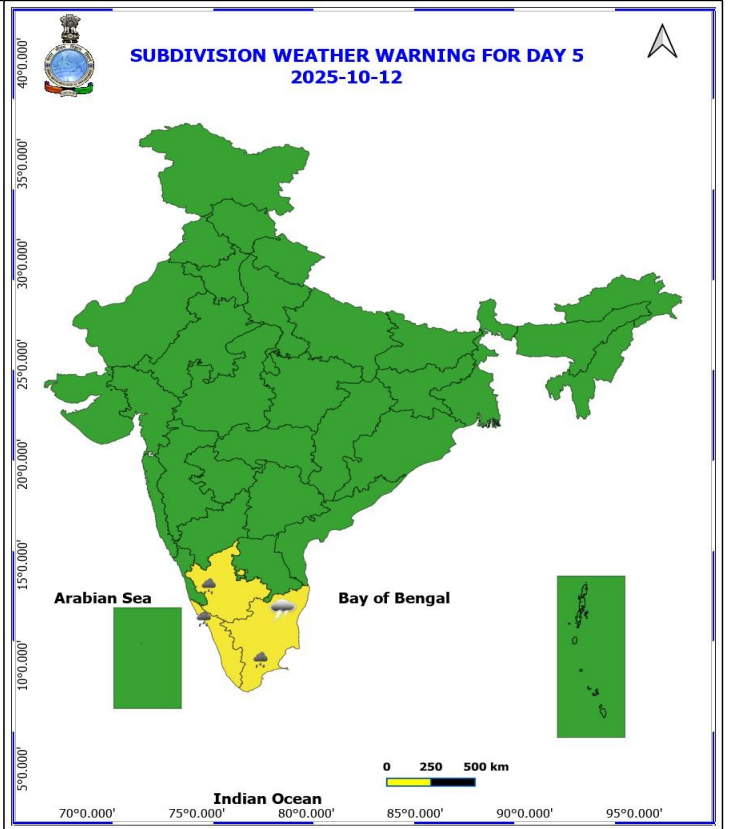
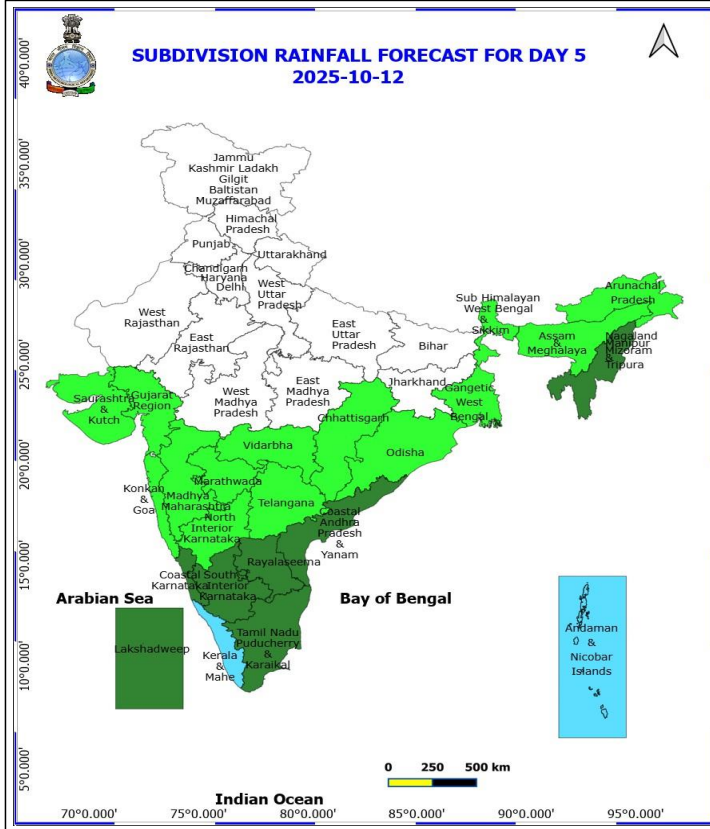
- ❖ **Heavy Rainfall** likely at isolated places over Coastal Karnataka, Kerala & Mahe, Lakshadweep, Rayalaseema, South Interior Karnataka and Tamil Nadu Puducherry & Karaikal.
- ❖ **Thunderstorm accompanied with lightning & gusty winds(30-40kmph)** likely at isolated places over Coastal Karnataka, South Interior Karnataka and Telangana.
- ❖ **Thunderstorm accompanied with Lightning** likely at isolated places over Andhra Pradesh, Kerala & Mahe, Lakshadweep and Tamil Nadu Puducherry & Karaikal.
- ❖ **Squally weather with wind speed reaching 40 - 50 kmph gusting to 60 kmph** likely to prevail over some parts of westcentral and eastcentral Arabian Sea.

***Red color warning does not mean "Red Alert" Red color warning means "Take Action"**

Forecast and warning for any day is valid from 0830 hours IST of day till 0830 hours IST of next day

For more details kindly visit <https://mausam.imd.gov.in> or contact 011-2434-4599

(Service to the nation since 1875)

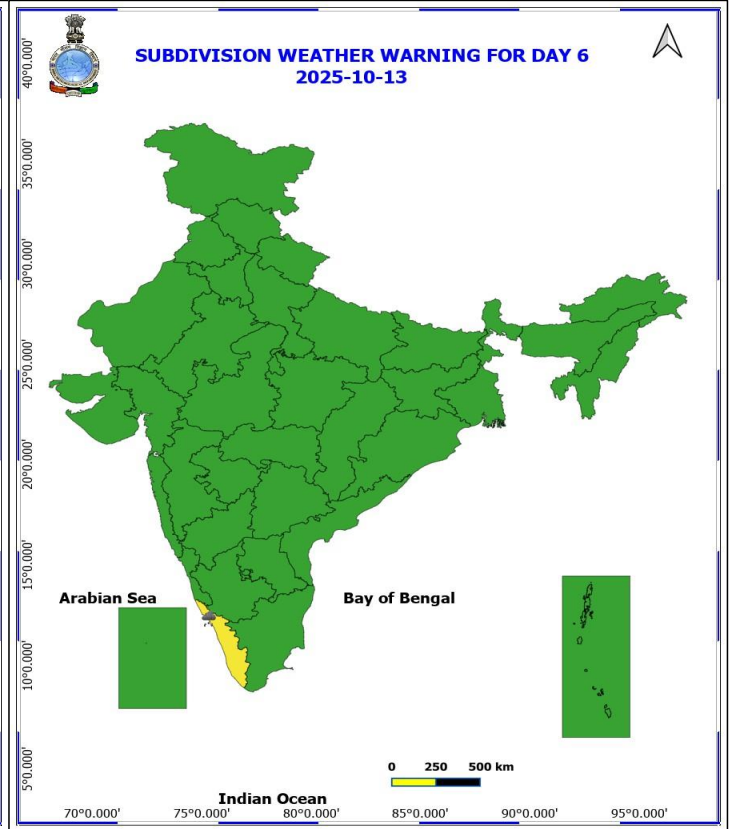
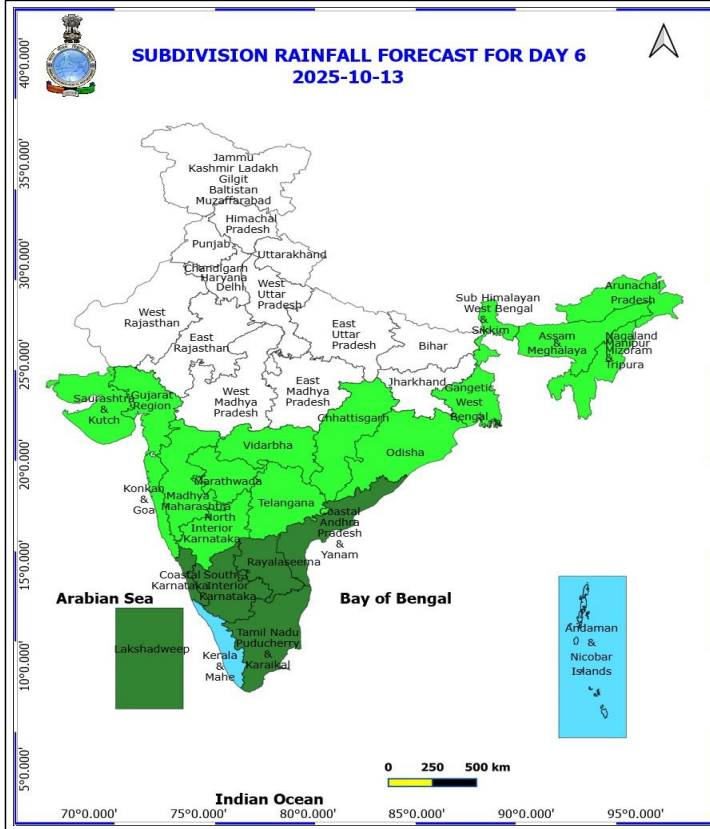


12 October (Day 5)

❖ **Heavy Rainfall** likely at isolated places over Kerala & Mahe, South Interior Karnataka and Tamil Nadu Puducherry & Karaikal.

❖ **Thunderstorm accompanied with Lightning** likely at isolated places over Tamil Nadu Puducherry & Karaikal.

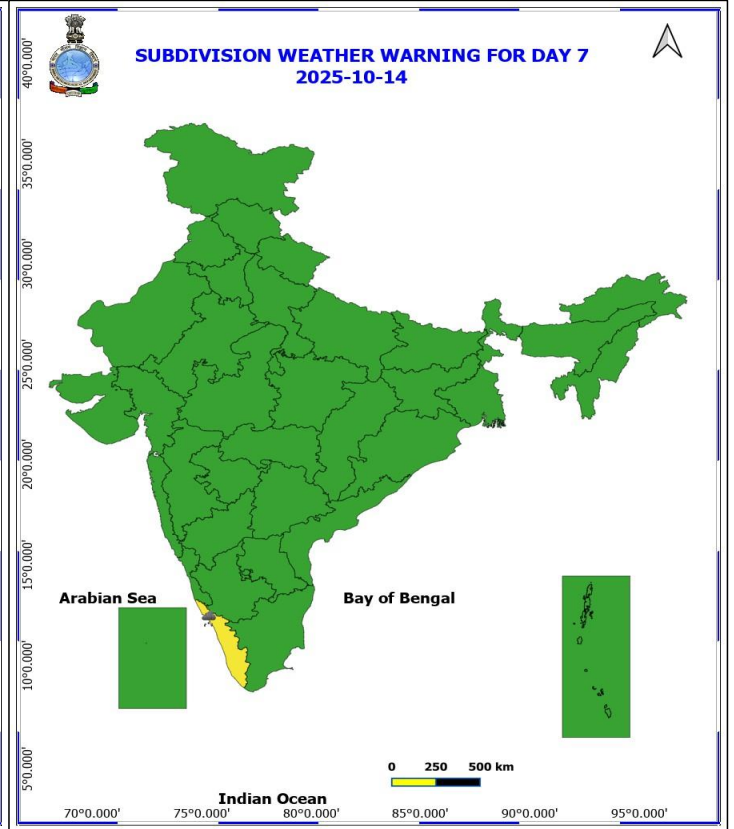
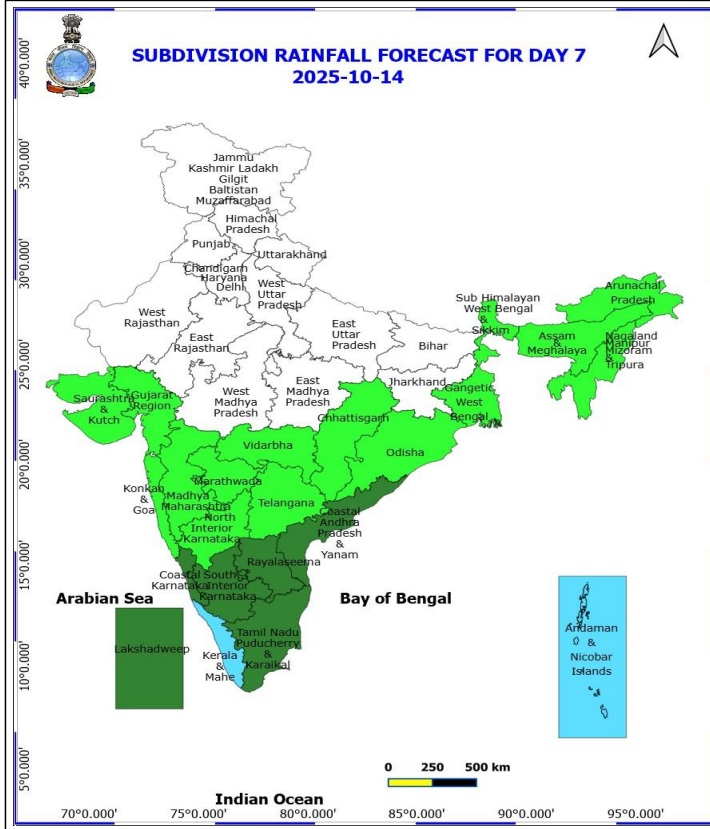
No Fishermen Warning



13 October (Day 6)

❖ Heavy Rainfall likely at isolated places over Kerala & Mahe.

No Fishermen Warning



14 October (Day 7)

❖ Heavy Rainfall likely at isolated places over Kerala & Mahe.

No Fishermen Warning

*Red color warning does not mean "Red Alert" Red color warning means "Take Action"
Forecast and warning for any day is valid from 0830 hours IST of day till 0830 hours IST of next day
For more details kindly visit <https://mausam.imd.gov.in> or contact 011-2434-4599

(Service to the nation since 1875)



Table-1

7 Days Rainfall Forecast

S.No.	Subdivision	8- Oct	9- Oct	10- Oct	11- Oct	12- Oct	13- Oct	14- Oct
		Day 1	Day 2	Day 3	Day 4	Day 5	Day 6	Day 7
1	ANDAMAN & NICOBAR ISLANDS	FWS	FWS	FWS	FWS	FWS	FWS	FWS
2	ARUNACHAL PRADESH	SCT	SCT	SCT	SCT	ISOL	ISOL	ISOL
3	ASSAM & MEHGHALAYA	SCT	SCT	SCT	SCT	ISOL	ISOL	ISOL
4	N. M. M. & T.	SCT	FWS	FWS	SCT	SCT	ISOL	ISOL
5	S.H. WEST BENGAL & SIKKIM	SCT	ISOL	ISOL	ISOL	ISOL	ISOL	ISOL
6	GANGETIC WEST BENGAL	SCT	SCT	SCT	SCT	ISOL	ISOL	ISOL
7	ODISHA	SCT	SCT	SCT	ISOL	ISOL	ISOL	ISOL
8	JHARKHAND	ISOL	ISOL	ISOL	DRY	DRY	DRY	DRY
9	BIHAR	ISOL	ISOL	ISOL	DRY	DRY	DRY	DRY
10	EAST UTTAR PRADESH	ISOL	DRY	DRY	DRY	DRY	DRY	DRY
11	WEST UTTAR PRADESH	DRY	DRY	DRY	DRY	DRY	DRY	DRY
12	UTTARAKHAND	ISOL	ISOL	DRY	DRY	DRY	DRY	DRY
13	HARYANA, CHD & DELHI	DRY	DRY	DRY	DRY	DRY	DRY	DRY
14	PUNJAB	DRY	DRY	DRY	DRY	DRY	DRY	DRY
15	HIMACHAL PRADESH	ISOL	ISOL	DRY	DRY	DRY	DRY	DRY
16	JAMMU AND KASHMIR AND LADAKH	ISOL	DRY	DRY	DRY	DRY	DRY	DRY
17	WEST RAJASTHAN	DRY	DRY	DRY	DRY	DRY	DRY	DRY
18	EAST RAJASTHAN	ISOL	DRY	DRY	DRY	DRY	DRY	DRY
19	WEST MADHYA PRADESH	ISOL	ISOL	DRY	DRY	DRY	DRY	DRY
20	EAST MADHYA PRADESH	SCT	ISOL	ISOL	DRY	DRY	DRY	DRY
21	GUJRAT REGION	SCT	ISOL	ISOL	ISOL	ISOL	ISOL	ISOL
22	SAURASHTRA & KUTCH	ISOL	ISOL	ISOL	ISOL	ISOL	ISOL	ISOL
23	KONKAN & GOA	SCT	SCT	ISOL	ISOL	ISOL	ISOL	ISOL
24	MADHYA MAHARASHTRA	ISOL	ISOL	ISOL	ISOL	ISOL	ISOL	ISOL
25	MARATHWADA	ISOL	ISOL	ISOL	ISOL	ISOL	ISOL	ISOL
26	VIDARBHA	SCT	ISOL	ISOL	ISOL	ISOL	ISOL	ISOL
27	CHATTISGARH	SCT	ISOL	ISOL	ISOL	ISOL	ISOL	ISOL
28	COASTAL ANDHRA PRADESH	SCT	SCT	SCT	SCT	SCT	SCT	SCT
29	TELANGANA	SCT	ISOL	ISOL	ISOL	ISOL	ISOL	ISOL
30	RAYALASEEMA	SCT	SCT	SCT	SCT	SCT	SCT	SCT
31	TAMILNADU & PUDUCHERRY	FWS	FWS	SCT	SCT	SCT	SCT	SCT
32	COSTAL KARNATAKA	FWS	FWS	FWS	FWS	SCT	SCT	SCT
33	NORTH INTERIOR KARNATAKA	SCT	SCT	ISOL	ISOL	ISOL	ISOL	ISOL
34	SOUTH INTERIOR KARNATAKA	FWS	FWS	FWS	SCT	SCT	SCT	SCT
35	KERALA	WS	WS	FWS	FWS	FWS	FWS	FWS
36	LAKSHDWEEP	FWS	FWS	FWS	FWS	SCT	SCT	SCT

Legend	Category	%Stations
WS	Widespread/Most Places	76-100
FWS	Fairly Widespread/Many Places	51-75
SCT	Scattered/ A Few Places	26-50
ISOL	Isolated Places	1-25
DRY	No Rain	0

***Red color warning does not mean "Red Alert" Red color warning means "Take Action"**
Forecast and warning for any day is valid from 0830 hours IST of day till 0830 hours IST of next day
For more details kindly visit <https://mausam.imd.gov.in> or contact 011-2434-4599

(Service to the nation since 1875)

Fig. 1: Maximum Temperatures Dated 2025-10-07

Fig. 2: Departure of Maximum Temp. Dated 2025-10-07

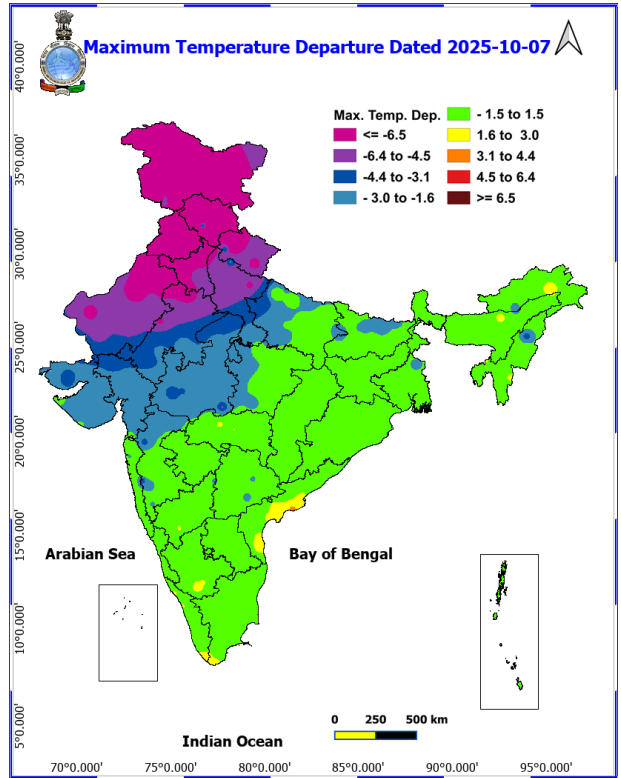
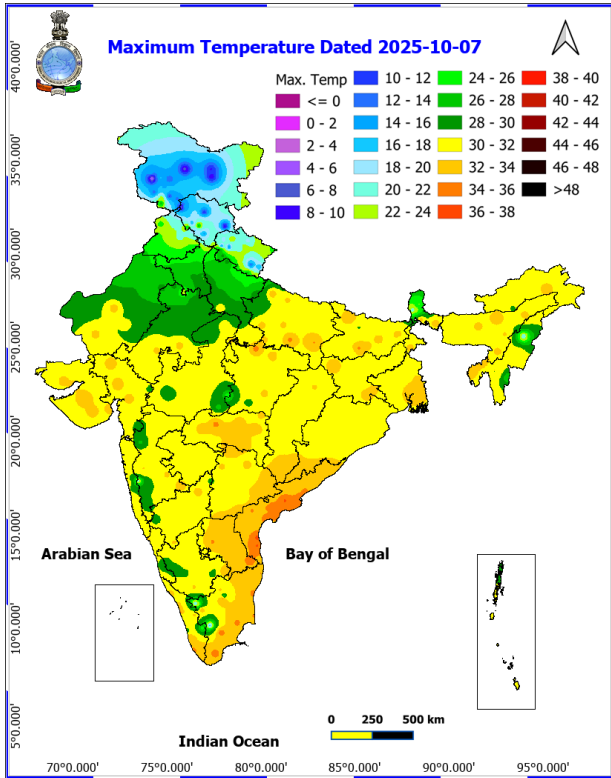
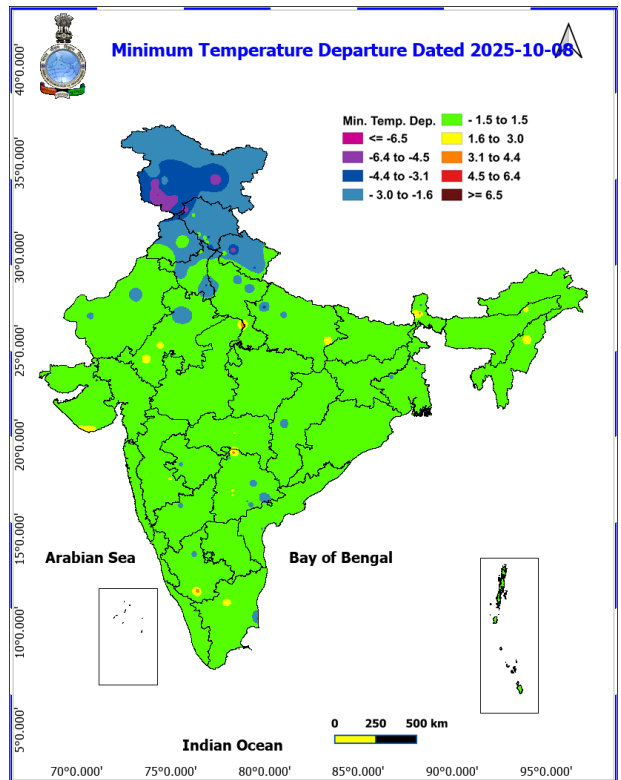
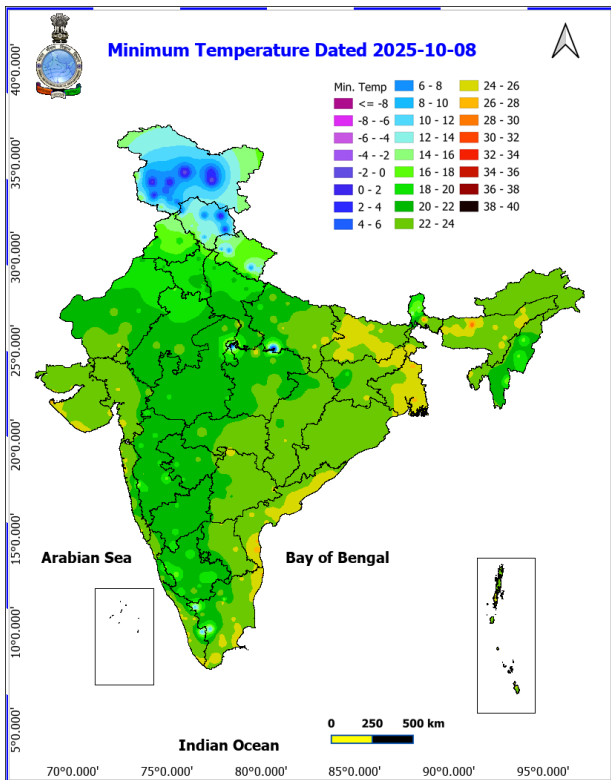


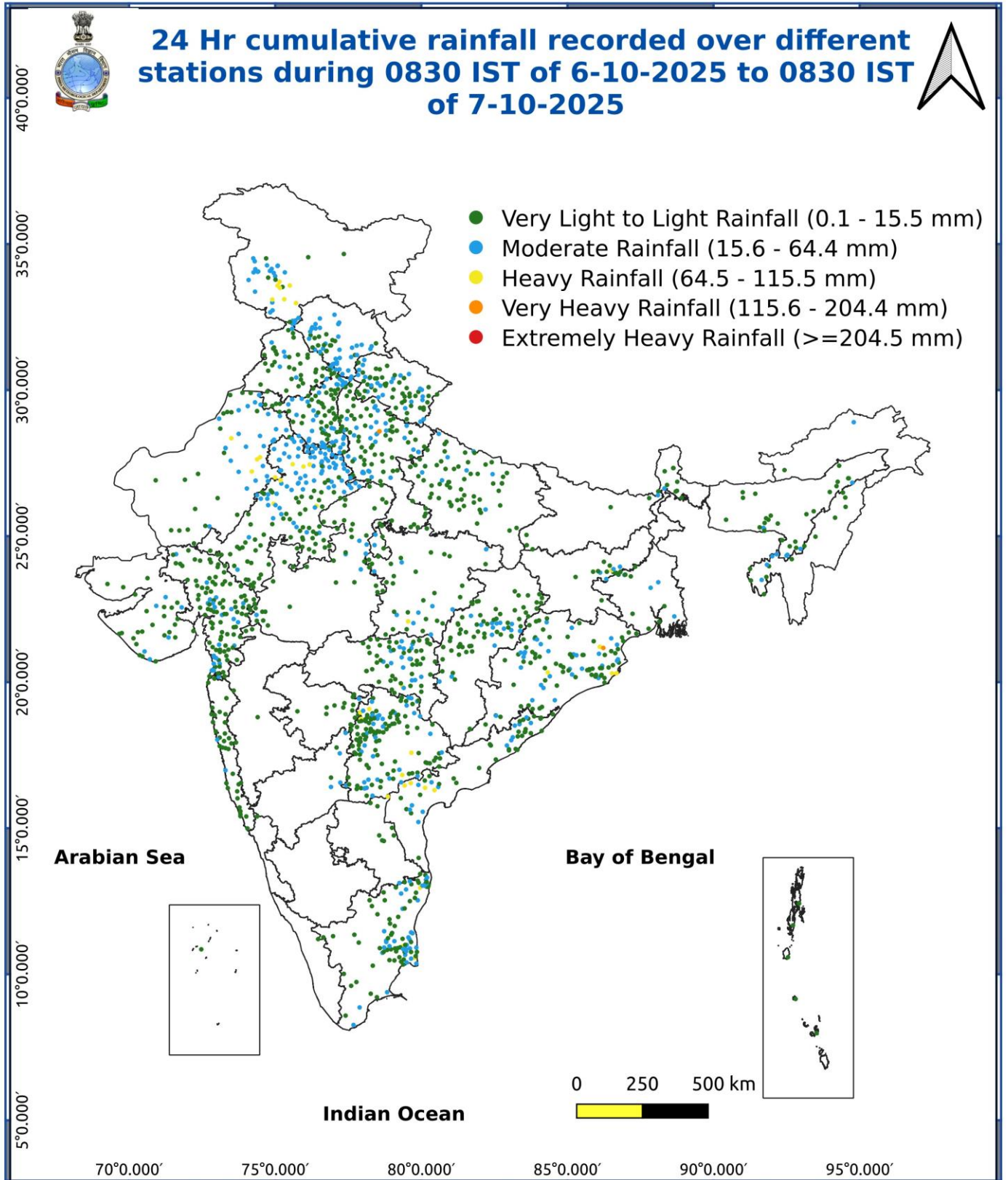
Fig. 3: Minimum Temperatures Dated 2025-10-07

Fig. 4: Departure of Minimum Temp. Dated 2025-10-07



***Red color warning does not mean "Red Alert" Red color warning means "Take Action"**
Forecast and warning for any day is valid from 0830 hours IST of day till 0830 hours IST of next day
For more details kindly visit <https://mausam.imd.gov.in> or contact 011-2434-4599

(Service to the nation since 1875)



Agromet advisories for various parts of the country

Agromet advisories for likely impact of Heavy Rainfall

(Based on the IBF and advisories issued by different AMFUs)

- ♦ In **Jammu & Kashmir**, drain out excess water from fields of rice, maize and other standing crops.
- ♦ In **Himachal Pradesh**, keep the harvested produce of rice, maize, kidney beans, finger millet, vegetables and fruits (pomegranate, apple and kiwi) in safer places. Ensure proper drainage in fields of standing crops (rice, maize, kidney beans, finger millet etc.), vegetables and fruit orchards to avoid waterlogging.
- ♦ In **Uttarakhand**, store the harvested produce of green gram, black gram, finger millet, rice, vegetables and fruits in safe place. Maintain drainage channels in standing crop fields to remove excess water.
- ♦ In **Punjab**, keep the harvested produce of rice and maize in safe places. Ensure proper drainage to drain out excess water from fields of rice, maize, cotton and vegetables.
- ♦ In **Haryana**, store the harvest produce of rice, green gram, black gram and cotton in safer places. Make provision to drain out excess water from standing crop fields.
- ♦ In **West Uttar Pradesh**, drain out excess water from fields of rice, maize, green gram, sugarcane, groundnut and vegetables.
- ♦ In **Tamil Nadu**, harvest matured crops of rice and groundnut and shift the harvested produce to safer places. Provide adequate drainage facilities in fields of rice, cotton, turmeric and vegetables and plantations of coconut and banana to avoid water stagnation.
- ♦ In **Kerala**, make provision to drain out excess water from fields of rice and plantations of banana, coconut, arecanut and black pepper.
- ♦ In **Coastal Karnataka**, make necessary arrangements to drain out excess water from fields of rice and plantations of coconut and arecanut.
- ♦ In **South Interior Karnataka**, harvest matured crops of groundnut and maize and store the produce in safer places. Shift the harvested produce of pepper, cardamom, turmeric and coffee to dry, covered and ventilated areas or cover with tarpaulins in the fields. Ensure proper drainage in fields of rice, maize, finger millet, pigeon pea, soybean, groundnut and vegetables and plantations of banana, black pepper, coconut and arecanut to avoid waterlogging.
- ♦ In **Rayalseema**, make provision to drain out excess water from fields of rice, groundnut, cotton, turmeric and vegetables.
- ♦ In **Assam**, ensure proper drainage of excess water from fields of *Sali* rice, black gram, green gram and vegetables.
- ♦ In **Meghalaya**, make necessary arrangements to drain out excess water from fields of standing crops, vegetables and fruit orchards.

Livestock / Fishery

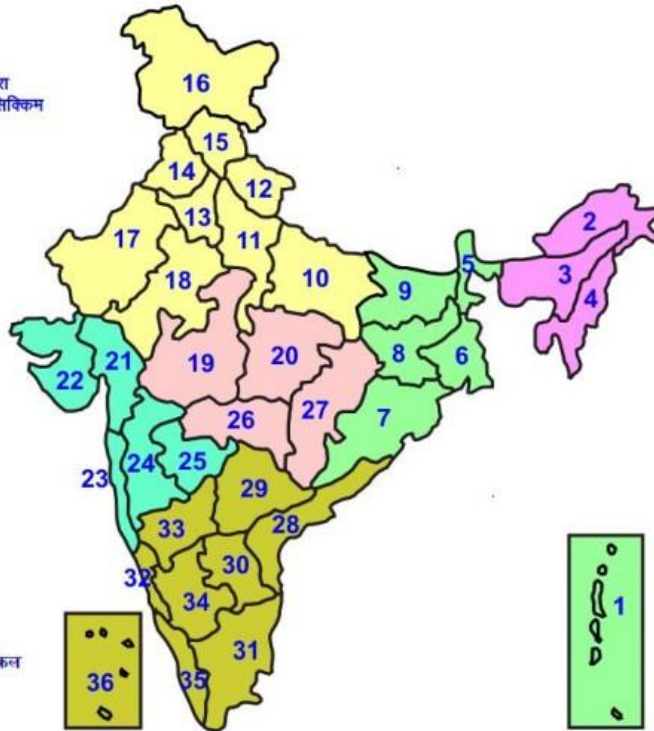
- ♦ Keep the animals inside the shed during heavy rainfall and provide them balanced feed.
- ♦ Store feed and fodder in a safe place to prevent spoilage.
- ♦ Construct an outlet with proper netting around the ponds to drain out excess water, thereby preventing fish from escaping in case of overflow.

Agromet advisories for likely impact of Thunderstorm / Gusty Winds / Squally Winds

Provide mechanical support to horticultural crops and staking or support to vegetables and young fruit plants / fruit-bearing plants to avoid lodging due to strong winds.

LEGENDS

- 1 अंडमान और निकोबार द्वीप समुह
- 2 अरुणाचल प्रदेश
- 3 असम और मेघालय
- 4 नागालैंड मनीपुर मीजोरम और त्रिपुरा
- 5 उप हिमालय पश्चिम बंगाल एवं सिक्किम
- 6 पश्चिम बंगाल
- 7 ओडिसा
- 8 झारखंड
- 9 बिहार
- 10 पूर्वी उत्तर प्रदेश
- 11 पश्चिम उत्तर प्रदेश
- 12 उत्तराखंड
- 13 हरियाणा चंडिगढ़ एवं दिल्ली
- 14 पंजाब
- 15 हिमाचल प्रदेश
- 16 जम्मू एवं कश्मीर एवं लद्दाख
- 17 पश्चिम राजस्थान
- 18 पूर्वी राजस्थान
- 19 पश्चिम मध्य प्रदेश
- 20 पूर्वी मध्य प्रदेश
- 21 गुजरात क्षेत्र
- 22 सौराष्ट्र एवं कच्छ
- 23 कोंकण एवं गोवा
- 24 मध्य महाराष्ट्र
- 25 मराठावाडा
- 26 विदर्भ
- 27 छत्तीसगढ़
- 28 तटीय आंध्र प्रदेश एवं यनम
- 29 तेलंगाना
- 30 रायलसीमा
- 31 तमिलनाडु, पुदुचेरी एवं कराईकल
- 32 तटिय कर्नाटक
- 33 आंतरिक उत्तरी कर्नाटक
- 34 आंतरिक दक्षिणी कर्नाटक
- 35 केरल एवं माहे
- 36 लक्षद्वीप



1. Andaman & Nicobar Islands
2. Arunachal Pradesh
3. Assam & Meghalaya
4. Nagaland, Manipur, Mizoram & Tripura
5. Sub-Himalayan West Bengal & Sikkim
6. Gangetic West Bengal
7. Orissa
8. Jharkhand
9. Bihar
10. East Uttar Pradesh
11. West Uttar Pradesh
12. Uttarakhand
13. Haryana, Chd & Delhi
14. Punjab
15. Himachal Pradesh
16. Jammu & Kashmir and Ladakh
17. West Rajasthan
18. East Rajasthan
19. West Madhya Pradesh
20. East Madhya Pradesh
21. Gujarat
22. Saurashtra
23. Konkan & Goa
24. Madhya Maharashtra
25. Marathwada
26. Vidharbha
27. Chhattisgarh
28. Coastal Andhra Pradesh & Yanam
29. Telangana
30. Rayalaseema
31. Tamilnadu, Puducherry & Karaikal
32. Coastal Karnataka
33. North Interior Karnataka
34. South Interior Karnataka
35. Kerala & Mahe
36. Lakshadweep

SPATIAL DISTRIBUTION (% of Stations reporting)

% Stations	Category	% Stations	Category
76-100	Widespread (WS/Most Places)	26-50	Scattered (SCT/ A Few Places)
51-75	Fairly Widespread (FWS/ Many Places)	1-25	Isolated (ISOL)

Subdivision Colour

- NO WARNING
- WATCH (BE UPDATED)
- ALERT (BE PREPARED TO TAKE ACTION)
- WARNING (TAKE ACTION)

Probabilistic Forecast

Terms	Probability of Occurrence (%)
Unlikely	< 25
Likely	25 - 50
Very Likely	50 - 75
Most Likely	> 75

- | | | | |
|--------------------------|-----------------|----------------------|--------------------|
| Heavy Rain | Very Heavy Rain | Extremely Heavy Rain | Heavy Snow |
| Thunderstorm & Lightning | Hailstorm | Dust Storm | Dust Raising Winds |
| Strong surface winds | Heat Wave | Hot Day | Warm Night |
| Cold Wave | Cold Day | Ground Frost | Fog |
| Hot & Humid | | | |

*Red color warning does not mean "Red Alert" Red color warning means "Take Action"

Forecast and warning for any day is valid from 0830 hours IST of day till 0830 hours IST of next day

For more details kindly visit <https://mausam.imd.gov.in> or contact 011-2434-4599

(Service to the nation since 1875)

LEGENDS

WARNING

WARNING (TAKE ACTION)
ALERT (BE PREPARED)
WATCH (BE UPDATED)
NO WARNING (NO ACTION)

Probabilistic Forecast

Terms	Probability of Occurrence (%)
Unlikely	< 25
Likely	25 - 50
Very Likely	50 - 75
Most Likely	> 75



Heavy: 64.5 to 115.5 mm/cm *
Very Heavy: 115.6 to 204.4 mm/cm *
Extremely Heavy: > 204.4 mm/cm *



When maximum temperature of a station reaches $\geq 40^{\circ}\text{C}$ for plains and $\geq 30^{\circ}\text{C}$ for hilly regions
(a) Based on Departure from normal

Heat Wave: Maximum Temperature Departure from normal 4.5°C to 6.4°C .
Severe Heat Wave: Maximum Temperature Departure from normal $\geq 6.5^{\circ}\text{C}$

(b). Based on Actual maximum temperature

Heat Wave: When actual maximum temperature $\geq 45^{\circ}\text{C}$.
Severe Heat Wave: When actual maximum temperature $\geq 47^{\circ}\text{C}$

(c). Criteria for heat wave for coastal stations

When maximum temperature departure is $> 4.5^{\circ}\text{C}$ from normal. Heat Wave may be described provided maximum temperature $\geq 37^{\circ}\text{C}$



When maximum temperature remains 40°C

Warm Night: When minimum temperature departure 4.5°C to 6.4°C .
Severe Warm Night: When minimum temperature departure $> 6.4^{\circ}\text{C}$.



When minimum temperature of a station $\leq 10^{\circ}\text{C}$ for plains and $\leq 0^{\circ}\text{C}$ for hilly regions.

(a). Based on departure

Cold Wave: Minimum Temperature Departure from normal -4.5°C to -6.4°C .
Severe Cold Wave: Minimum Temperature Departure from normal $\leq -6.5^{\circ}\text{C}$

(b) Based on actual Minimum Temperature (for Plains only)

Cold Wave : When Minimum Temperature is $\leq 4.0^{\circ}\text{C}$
Severe Cold Wave: When Minimum Temperature is $\leq 2.0^{\circ}\text{C}$

(c) For Coastal Stations

When Minimum Temperature departure is $\leq -4.5^{\circ}\text{C}$ & actual Minimum Temperature is $\leq 15^{\circ}\text{C}$



When minimum temperature of a station $\leq 10^{\circ}\text{C}$ for plains and $\leq 0^{\circ}\text{C}$ for hilly regions
Based on departure

Cold Day: Maximum Temperature Departure from normal -4.5°C to -6.4°C .
Severe Cold Day: Maximum Temperature Departure from normal $\leq -6.5^{\circ}\text{C}$



Phenomenon of small droplets suspended in air and the horizontal visibility $< 1\text{km}$

Moderate Fog: When the visibility between 500-200 metres
Dense Fog: when the visibility between 50- 200 metres
Very Dense Fog: when the visibility < 50 metres



Sudden electrical discharges manifested by a flash of light (Lightning) and a sharp rumbling sound (thunder)



An ensemble of particles of dust or sand energetically lifted to great heights by a strong and turbulent wind.



Ice deposits on ground

Air temperature $\leq 4^{\circ}\text{C}$ (over Plains)



A strong wind that rises suddenly, lasts for atleast 1 minute.

Moderate: Wind speed 52-61 kmph
Severe: Wind speed 62-87 kmph
Very Severe: Wind speed > 87 kmph



Effect of various waves in the sea over specific area

Rough to very rough: Wind speed 41-62 kmph (22-33 knots) & Wave height 2.5-6 metre
High to very high: Wind speed 63-117 kmph (34-63 knots) & Wave height 6-14 metre
Phenomenal: Wind speed > 117 kmph (> 63 knots) & Wave height > 14 metre



Cyclonic Storm: Wind speed 62-87 kmph (34-47 knots)
Severe Cyclonic Storm: Wind speed 88-117 kmph (48-63 knots)
Very Severe Cyclonic Storm: Wind speed 118-165 kmph (64 - 89 knots)
Extremely Severe Cyclonic Storm: Wind speed 166-220 kmph (90 -119 knots)
Super Cyclone Storm: Wind speed > 220 kmph (> 119 knots)

*Red color warning does not mean "Red Alert" Red color warning means "Take Action"

Forecast and warning for any day is valid from 0830 hours IST of day till 0830 hours IST of next day

For more details kindly visit <https://mausam.imd.gov.in> or contact 011-2434-4599

(Service to the nation since 1875)