

2025-07-18

Time of Issue: 08:45:00 hours IST
(Morning)

ALL INDIA WEATHER SUMMARY AND FORECAST BULLETIN

Significant Weather Features

Weather Forecast and Warnings

Northwest India:

Extremely heavy rainfall (≥ 21 cm) very likely at isolated places over Rajasthan on 18th July.

Isolated **heavy rainfall** likely over Jammu & Kashmir, Himachal Pradesh, Uttarakhand, East Uttar Pradesh during 18th-23rd; Punjab, Haryana during 21st-23rd; Rajasthan on 18th & 19th July with **very heavy rainfall over Uttarakhand during 20th-23rd; West Uttar Pradesh on 18th, 20th & 21st and Himachal Pradesh during 21st-23rd July.**

Light/moderate rainfall at most/many places accompanied with thunderstorm, lightning likely over western Himalayan region and some/many places over the plains during next 7 days.

South Peninsular India:

Extremely heavy rainfall (≥ 21 cm) very likely at isolated places over Kerala on 19th & 20th and South Interior Karnataka on 18th July.

Isolated **heavy to very heavy rainfall** likely over Kerala & Mahe, Tamil Nadu, Coastal and South Interior Karnataka during 18th-23rd; isolated **heavy rainfall** over Coastal Andhra Pradesh & Yanam, north Interior Karnataka during 18th-23rd; Lakshadweep on 19th & 20th; Rayalaseema and Telangana on 18th & 19th July.

Strong surface winds (speed reaching 40-50 kmph) very likely over South Peninsular India during next 5 days.

Light/moderate rainfall at many/some places over Kerala & Mahe, Lakshadweep, Karnataka, Rayalaseema; isolated to scattered rainfall over Coastal Andhra Pradesh & Yanam, Telangana during next 7 days.

East & Central India:

Isolated **heavy rainfall** very likely to continue over Madhya Pradesh on 18th and during 21st-23rd; Vidarbha, Chhattisgarh during 21st -23rd; Bihar during 20th-23rd; Sub-Himalayan West Bengal & Sikkim, Odisha during 19th-23rd July **with very heavy rainfall over West Madhya Pradesh on 18th and Sub-Himalayan West Bengal & Sikkim on 20th July.**

Light/moderate rainfall at most/many places accompanied with accompanied with thunderstorm & lightning likely over the region during next 7 days.

West India:

Heavy rainfall likely at isolated places over Konkan & Goa during 18th-23rd; Ghat areas of Madhya Maharashtra during 20th-23rd July.

Light/moderate rainfall at many/some places very likely over the region during next 5 days.

Northeast India:

Light/moderate rainfall at many places accompanied with **thunderstorm, lightning** likely to continue over Northeast India during next 7 days.

Isolated **heavy rainfall** very likely over Arunachal Pradesh, Assam & Meghalaya, Nagaland & Tripura during 18th-22nd with very heavy rainfall over Meghalaya on 19th July.

***Red color warning does not mean "Red Alert" Red color warning means "Take Action"**

Forecast and warning for any day is valid from 0830 hours IST of day till 0830 hours IST of next day

For more details kindly visit <https://mausam.imd.gov.in> or contact 011-2434-4599

(Service to the nation since 1875)



Fishermen Warnings:

Fishermen are advised to avoid venturing into the following from 18th to 22nd July 2025 to the following Areas:

Arabian Sea: Along and off the Kerala, Karnataka coasts, over Lakshadweep, Maldives, Comorin areas; Along and off the Somalia coast and adjoining sea areas, Oman and adjoining Yemen coast & adjoining sea areas; most parts of central Arabian Sea and adjoining south and north Arabian Sea for 18th to 22nd July.

Bay of Bengal:

Many parts of south Bay of Bengal for 18th & 19th July; most parts of south Bay of Bengal and adjoining central Bay of Bengal for 20th July, most parts of south & central Bay of Bengal, off Tamil Nadu and Andhra Pradesh coasts on 21st July; over Gulf of Mannar for 18th to 22nd July and over Andaman Sea for 18th to 22nd July.

***Red color warning does not mean "Red Alert" Red color warning means "Take Action"**

Forecast and warning for any day is valid from 0830 hours IST of day till 0830 hours IST of next day

For more details kindly visit <https://mausam.imd.gov.in> or contact 011-2434-4599

(Service to the nation since 1875)

Main Weather Observations:

- ❖ **Rainfall distribution** (from 0830 hours IST to 1730 hours IST of yesterday): **at most places** over Himachal Pradesh, Jharkhand, East Madhya Pradesh, Coastal Karnataka, Kerala & Mahe and Lakshadweep ; **at many places** over West Uttar Pradesh, Konkan & Goa , Madhya Maharashtra , Sub-himalayan West Bengal & Sikkim, West Madhya Pradesh, Jammu & Kashmir and Ladakh, Nagaland, Manipur, Mizoram & Tripura, Gangetic West Bengal, Odisha, Uttarakhand, East Rajasthan, Bihar, Haryana Chandigarh & Delhi, Punjab, West Rajasthan, Assam & Meghalaya, Arunachal Pradesh, Coastal Andhra Pradesh & Yanam, Vidarbha, Chhattisgarh, Andaman & Nicobar Islands, Telangana, East Uttar Pradesh, Rayalaseema, Tamilnadu Puducherry & Karaikal, North Interior Karnataka and South Interior Karnataka; **Dry** over rest of the country.
- ❖ **Significant rainfall recorded(in cm)** (from 0830 hours IST to 1730 hours IST of yesterday): **East Madhya Pradesh:** Satna (dist Satna) 9, Rewa (dist Rewa) 6, Tikamgarh-obs (dist Tikamgarh), Khajuraho (dist Chhatarpur) 4 Each; **East Uttar Pradesh:** Banda (dist Banda), Allahabad (dist Prayagraj) 5 Each; **Coastal Karnataka:** Honavar (dist Uttara Kannada) 3.
- ❖ **Heavy Rainfall observed** (from 0830 hours IST to 1730 hours IST of yesterday): **Heavy rain** at isolated places over East Madhya Pradesh
- ❖ **Minimum Temperature Departures (as on 17-07-2025):** **markedly above normal(> 5.1°C)** at isolated places over Assam & Meghalaya, Sub Himalayan West Bengal & Sikkim, West Uttar Pradesh, Himachal Pradesh, Jammu-KashmirLadakh-Gilgit-Baltistan-Muzaffarabad, West Madhya Pradesh, East Madhya Pradesh, Gujarat Region and Saurashtra & Kutch. **appreciably above normal(3.1°C to 5.0°C)** at isolated places over Nagaland, Manipur, Mizoram & Tripura, Odisha, Bihar, East Uttar Pradesh and Coastal Andhra Pradesh & Yanam. **above normal(1.6°C to 3.0°C)** at many places over Konkan & Goa; at few places over Arunachal Pradesh, Vidarbha, Chhattisgarh, Telangana, Rayalaseema and Lakshadweep; at isolated places over Andaman & Nicobar Islands, Gangetic West Bengal, East Rajasthan, Madhya Maharashtra, Marathwada, Tamil Nadu, Puducherry & Karaikal and North Interior Karnataka. **near normal(-1.5°C to 1.5°C)** at many places over Jharkhand, Uttarakhand, Haryana-Chandigarh-Delhi and Kerala & Mahe; at most places over Punjab, West Rajasthan, Coastal Karnataka and South Interior Karnataka. **The lowest minimum temperature** of 18.4°C was reported at MYSORE (KARNATAKA) over the Plains of India.
- ❖ **Maximum Temperature Departures (as on 17-07-2025):** **markedly above normal(> 5.1°C)** at isolated places over Assam & Meghalaya, Jammu-KashmirLadakh-Gilgit-Baltistan-Muzaffarabad, Madhya Maharashtra, Chhattisgarh, Coastal Andhra Pradesh & Yanam and Telangana. **appreciably above normal(3.1°C to 5.0°C)** at few places over Arunachal Pradesh; at isolated places over Sub Himalayan West Bengal & Sikkim, Odisha and Vidarbha. **above normal(1.6°C to 3.0°C)** at many places over Rayalaseema; at few places over Gujarat Region, Konkan & Goa and North Interior Karnataka; at isolated places over Andaman & Nicobar Islands, Gangetic West Bengal, Jharkhand, Saurashtra & Kutch and Tamil Nadu, Puducherry & Karaikal. **near normal(-1.5°C to 1.5°C)** at many places over Coastal Karnataka and South Interior Karnataka; at most places over Nagaland, Manipur, Mizoram & Tripura, Bihar, Uttarakhand, Marathwada and Lakshadweep; at few places over East Uttar Pradesh, West Uttar Pradesh, Haryana-Chandigarh-Delhi, Punjab, Himachal Pradesh, West Rajasthan, West Madhya Pradesh and Kerala & Mahe; at isolated places over East Madhya Pradesh. **The highest maximum temperature** of 40.0°C was reported at MADURAI (A) (TAMIL NADU).

*Red color warning does not mean "Red Alert" Red color warning means "Take Action"

Forecast and warning for any day is valid from 0830 hours IST of day till 0830 hours IST of next day

For more details kindly visit <https://mausam.imd.gov.in> or contact 011-2434-4599

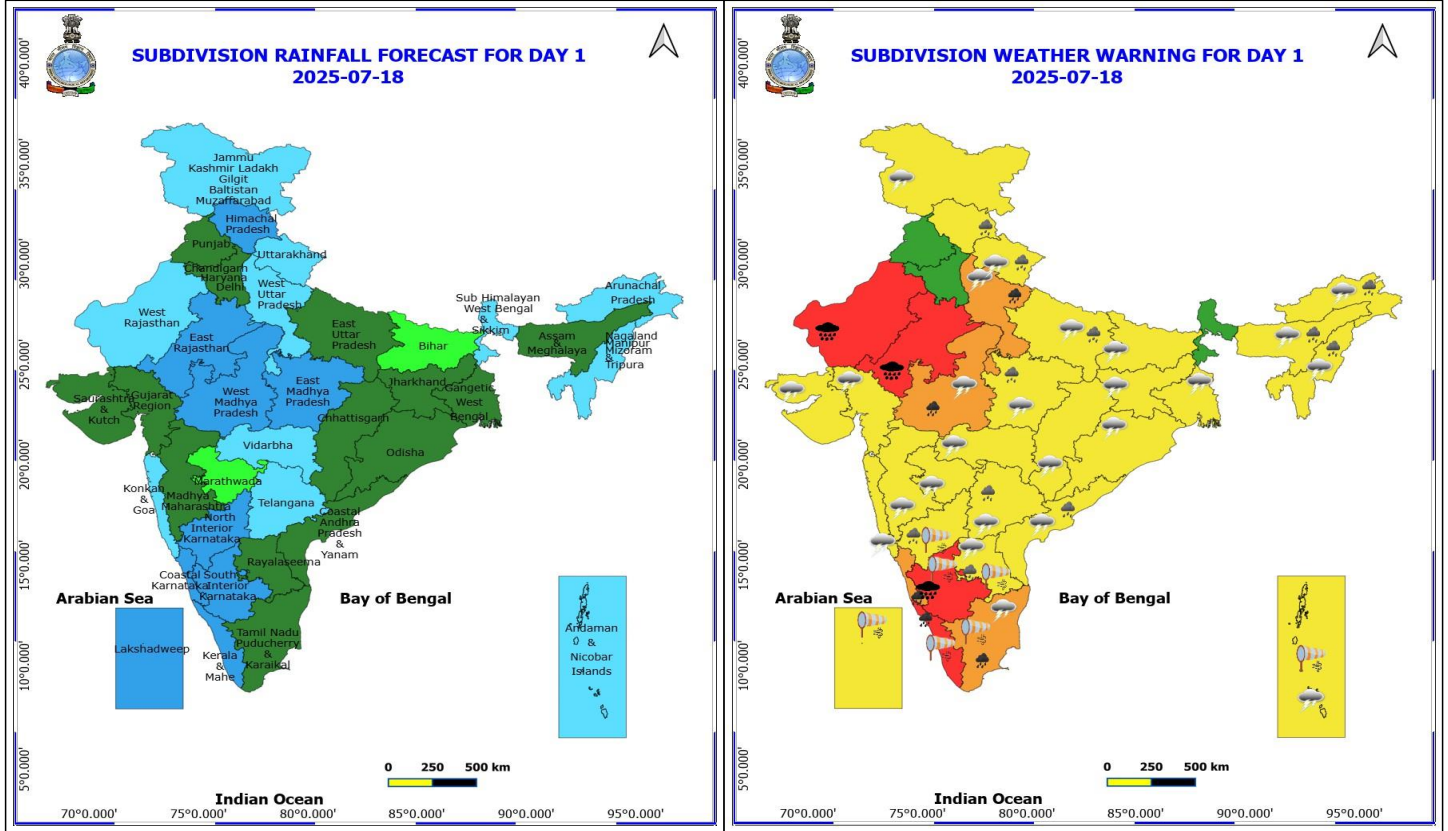
(Service to the nation since 1875)

Meteorological Analysis (Based on 0530 hours IST)

- ❖ The Depression over Central Parts of South Uttar Pradesh moved west-northwestwards with a speed of 17 kmph during past 6 hours and lay centered at 0530 hrs IST of today, the 18th July, 2025, over northwest Madhya Pradesh & adjoining Southwest Uttar Pradesh, near latitude 26.3°N and longitude 79.0°E, 20 km south of Etawah, 80 km east of Gwalior, 120 km east-southeast of Dholpur and 140 km southeast of Agra. It is likely to move west-northwestwards across northwest Madhya Pradesh and east Rajasthan during next 24 hours.
- ❖ The **monsoon trough** at mean sea level now passes through Bikaner, Jaipur, center of **Depression** over northwest Madhya Pradesh & adjoining Southwest Uttar Pradesh, Satna, Daltonganj, Bankura, Digha and thence east southeastwards to northeast Bay of Bengal.
- ❖ The **upper air cyclonic circulation** over central parts of Pakistan extending upto 3.1 km above mean sea level persists.
- ❖ A fresh **Western Disturbance** as a trough in middle tropospheric levels with its axis at 5.8 km above mean sea level runs roughly along Long. 60°E to the north of Lat. 30°N.
- ❖ The **east-west trough** roughly along Lat. 10°N at 5.8 km above mean sea level persists.
- ❖ The **upper air cyclonic circulation** over North Interior Karnataka & neighbourhood at 3.1 km above mean sea level persists.
- ❖ The **Western Disturbance** as a trough in middle tropospheric levels with its axis at 5.8 km above mean sea level roughly along Long. 70°E to the north of Lat. 30°N has moved away.

Weather Outlook for subsequent 3 days

- **Fairlywidespreadtowidespreadrainfall**verylikelyovermostpartsofthecountryexcepttheplainsof Northwest India where isolated to scattered rainfall is likely.



18 July (Day 1)

- ❖ **Heavy to Very Heavy Rainfall with isolated Extremely Heavy Rainfall** very likely at isolated places over Rajasthan and South Interior Karnataka.
- ❖ **Heavy to Very Heavy Rainfall** very likely at isolated places over Coastal Karnataka, Kerala & Mahe, Tamil Nadu Puducherry & Karaikal, West Madhya Pradesh and Southwest Uttar Pradesh.
- ❖ **Heavy Rainfall** very likely at isolated places over Andhra Pradesh, Arunachal Pradesh, Assam & Meghalaya, East Madhya Pradesh, East Uttar Pradesh, Himachal Pradesh, Nagaland, Manipur, Mizoram and Tripura, North Interior Karnataka, Telangana and Uttarakhand.
- ❖ **Thunderstorm accompanied with lightning & gusty winds(40-50kmph)** very likely at isolated places over Madhya Pradesh.
- ❖ **Thunderstorm accompanied with lightning & gusty winds(30-40kmph)** very likely at isolated places over Andaman & Nicobar Islands, Bihar, Gangetic West Bengal, Jammu-Kashmir-Ladakh-Gilgit-Baltistan-Muzaffarabad, Odisha and Uttarakhand.
- ❖ **Thunderstorm accompanied with Lightning** very likely at isolated places over Andhra Pradesh, Arunachal Pradesh, Assam & Meghalaya, Chhattisgarh, Gujarat State, Jharkhand, Konkan & Goa, Maharashtra, Nagaland, Manipur, Mizoram and Tripura, Tamil Nadu Puducherry & Karaikal, Telangana and Uttar Pradesh.
- ❖ **Strong Surface Winds** very likely at isolated places over Andaman & Nicobar Islands, Interior Karnataka, Kerala & Mahe, Lakshadweep, Rayalaseema and Tamil Nadu Puducherry & Karaikal.
- ❖ **Squally wind speed reaching 45kmph to 55kmph gusting to 65kmph** is likely to prevail along and off Somalia, Yemen & south Oman coasts, most parts of west central Arabian Sea & adjoining parts of east central Arabian

***Red color warning does not mean "Red Alert" Red color warning means "Take Action"**

Forecast and warning for any day is valid from 0830 hours IST of day till 0830 hours IST of next day

For more details kindly visit <https://mausam.imd.gov.in> or contact 011-2434-4599

(Service to the nation since 1875)

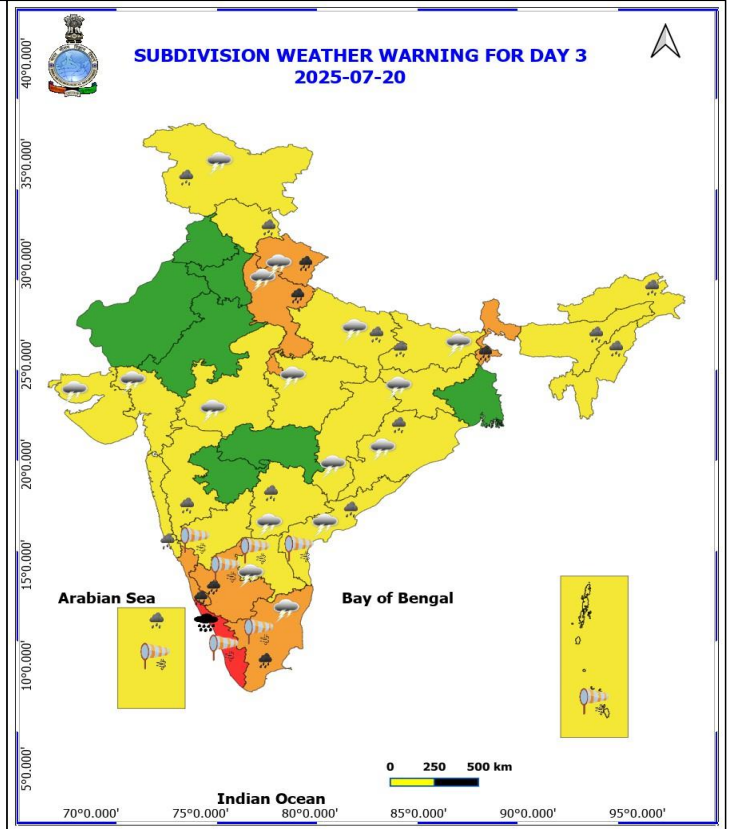
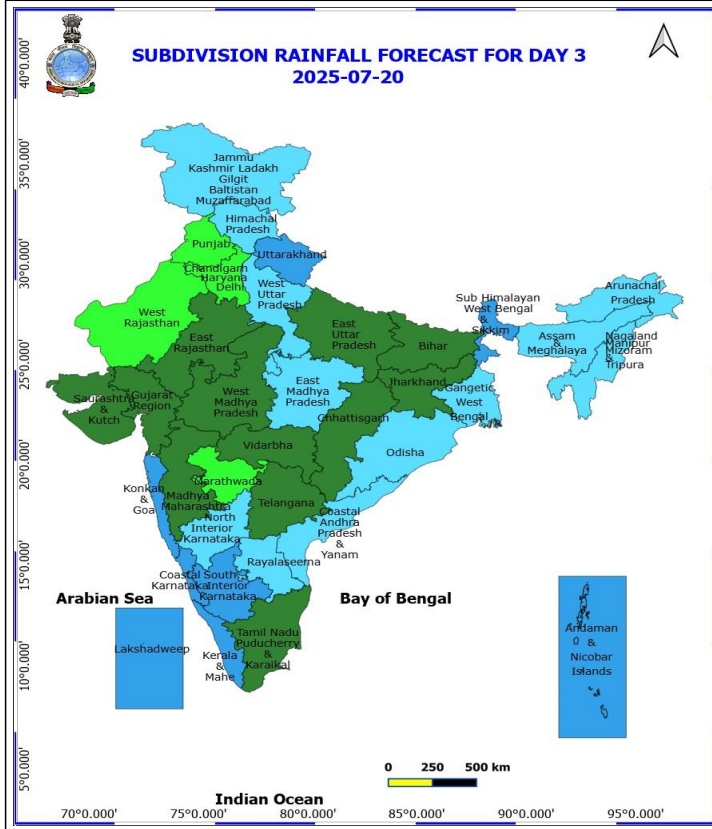


Sea, some parts of southwest Arabian Sea.

- **Squally weather with wind speed 40 - 50 kmph gusting to 60 kmph** likely to prevail over many parts of east central Arabian Sea, some parts of west central Arabian Sea, northern parts of south Arabian Sea, along and off Kerala, Karnataka coasts, over Lakshadweep area & adjoining Maldives area, Comorin area, southern parts of southwest Bay of Bengal and adjoining parts of southeast Bay of Bengal, over Gulf of Mannar.



South Arabian Sea, along and off Kerala, Karnataka coasts, over Lakshadweep, Maldives, Comorin areas, most parts of south Bay of Bengal, over Gulf of Mannar, along and off Sri Lanka coast, over Andaman Sea.



20 July (Day 3)

- ❖ **Heavy to Very Heavy Rainfall with isolated Extremely Heavy Rainfall** very likely at isolated places over Kerala & Mahe.
- ❖ **Heavy to Very Heavy Rainfall** very likely at isolated places over Coastal Karnataka, South Interior Karnataka, Sub Himalayan West Bengal & Sikkim, Tamil Nadu Puducherry & Karaikal, Uttarakhand and West Uttar Pradesh.
- ❖ **Heavy Rainfall** very likely at isolated places over Arunachal Pradesh, Assam & Meghalaya, Bihar, Coastal Andhra Pradesh, East Uttar Pradesh, Himachal Pradesh, Jammu-Kashmir-Ladakh-Gilgit-Baltistan-Muzaffarabad, Konkan & Goa, Lakshadweep, Madhya Maharashtra, Nagaland, Manipur, Mizoram and Tripura, Odisha and Telangana.
- ❖ **Thunderstorm accompanied with lightning & gusty winds(30-40kmph)** very likely at isolated places over Bihar, Jammu-Kashmir-Ladakh-Gilgit-Baltistan-Muzaffarabad, Odisha and Uttarakhand.
- ❖ **Thunderstorm accompanied with Lightning** very likely at isolated places over Andhra Pradesh, Chhattisgarh, Gujarat State, Jharkhand, Madhya Pradesh, Tamil Nadu Puducherry & Karaikal, Telangana and Uttar Pradesh.
- ❖ **Strong Surface Winds** very likely at isolated places over Andaman & Nicobar Islands, Andhra Pradesh, Interior Karnataka, Kerala & Mahe, Lakshadweep and Tamil Nadu Puducherry & Karaikal.
- **Squally wind speed reaching 45 kmph to 55 kmph gusting to 65 kmph** is likely to prevail along and off Somalia, Yemen & south Oman coasts, most parts of westcentral Arabian Sea & adjoining parts of eastcentral Arabian Sea, some parts of southwest Arabian Sea.
- **Squally weather with wind speed 40 - 50 kmph gusting to 60 kmph** likely to prevail over most parts of eastcentral Arabian Sea, many parts of westcentral Arabian Sea, many parts of south Arabian Sea, along and off Kerala, Karnataka coasts, over Lakshadweep, Maldives, Comorin areas, most parts of south Bay of Bengal & adjoining central Bay of Bengal, over Gulf of Mannar, along and off Sri Lanka coast, over Andaman Sea.

***Red color warning does not mean "Red Alert" Red color warning means "Take Action"**

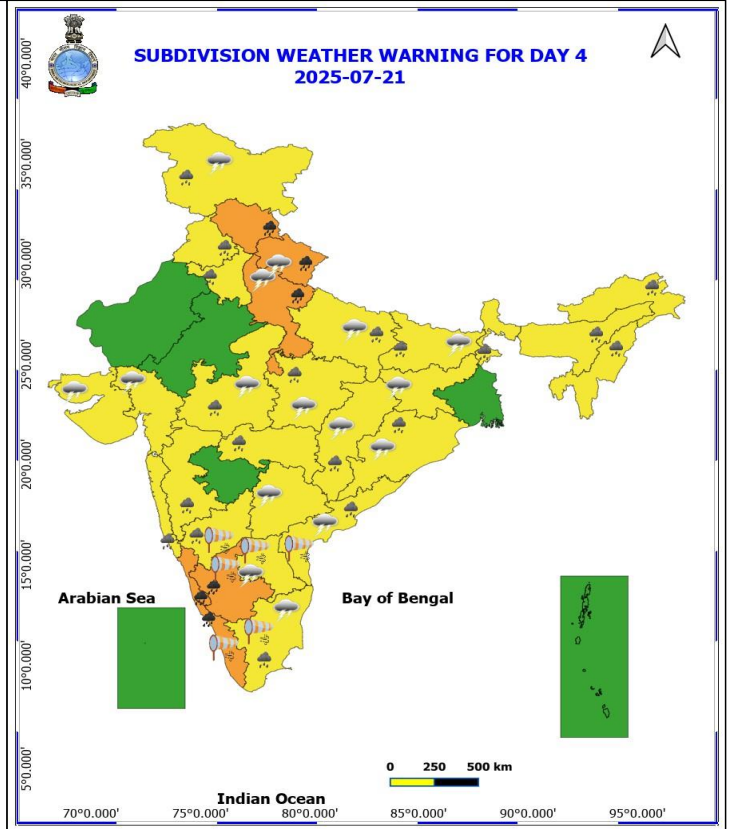
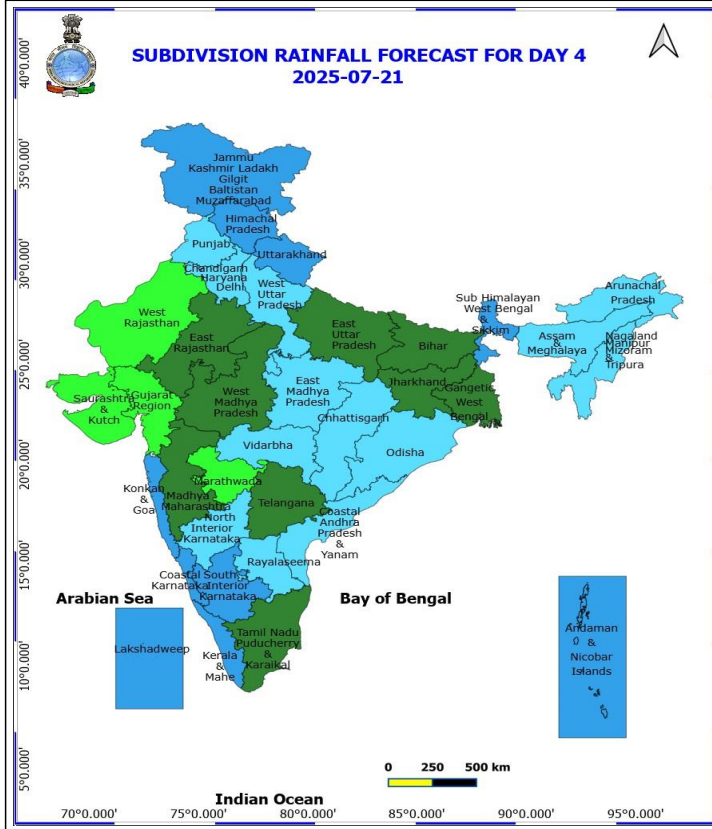
Forecast and warning for any day is valid from 0830 hours IST of day till 0830 hours IST of next day

For more details kindly visit <https://mausam.imd.gov.in> or contact 011-2434-4599

(Service to the nation since 1875)



- ♦ **Squally weather with wind speed 45 - 55 kmph gusting to 65 kmph** likely to prevail over many parts of north Andaman Sea.



21 July (Day 4)

- ❖ **Heavy to Very Heavy Rainfall** likely at isolated places over Coastal Karnataka, Himachal Pradesh, Kerala & Mahe, South Interior Karnataka, Uttarakhand and West Uttar Pradesh.
- ❖ **Heavy Rainfall** likely at isolated places over Arunachal Pradesh, Assam & Meghalaya, Bihar, Chhattisgarh, Coastal Andhra Pradesh, East Uttar Pradesh, Haryana, Chandigarh & Delhi, Jammu-Kashmir-Ladakh-Gilgit-Baltistan-Muzaffarabad, Konkan & Goa, Madhya Maharashtra, Madhya Pradesh, Nagaland, Manipur, Mizoram and Tripura, North Interior Karnataka, Odisha, Punjab, Sub Himalayan West Bengal & Sikkim, Tamil Nadu Puducherry & Karaikal and Vidarbha.
- ❖ **Thunderstorm accompanied with lightning & gusty winds(30-40kmph)** likely at isolated places over Bihar, Jammu-Kashmir-Ladakh-Gilgit-Baltistan-Muzaffarabad, Odisha and Uttarakhand.
- ❖ **Thunderstorm accompanied with Lightning** likely at isolated places over Andhra Pradesh, Chhattisgarh, Gujarat State, Jharkhand, Madhya Pradesh, Tamil Nadu Puducherry & Karaikal, Telangana and Uttar Pradesh.
- ❖ **Strong Surface Winds** likely at isolated places over Andhra Pradesh, Interior Karnataka, Kerala & Mahe and Tamil Nadu Puducherry & Karaikal.
 - **Squally wind speed reaching 45 kmph to 55 kmph gusting to 65 kmph** is likely to prevail along and off Somalia, Yemen & south Oman coasts, most parts of westcentral Arabian Sea & adjoining parts of eastcentral Arabian Sea, some parts of southwest Arabian Sea.
 - **Squally weather with wind speed 40 - 50 kmph gusting to 60 kmph** likely to prevail over most parts of eastcentral Arabian Sea, many parts of westcentral Arabian Sea, many parts of south Arabian Sea, along and off Kerala, Karnataka coasts, over Lakshadweep, Maldives, Comorin areas, most parts of south and central Bay of Bengal, overGulfofMannar, alongandoffSriLankacoast, offTamilNaduandAndhraPredeshcoasts over Andaman Sea.

***Red color warning does not mean "Red Alert" Red color warning means "Take Action"**

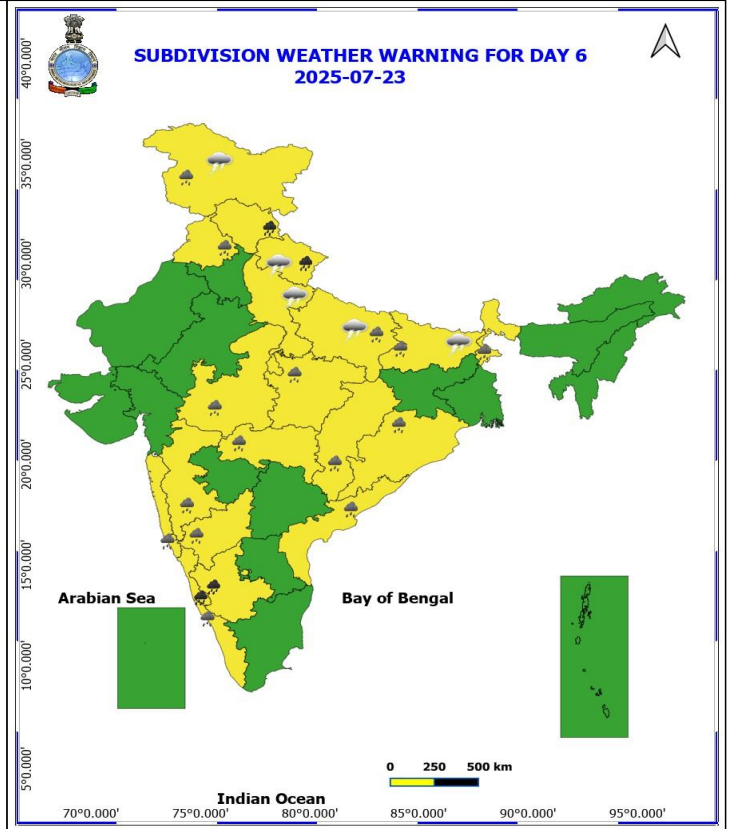
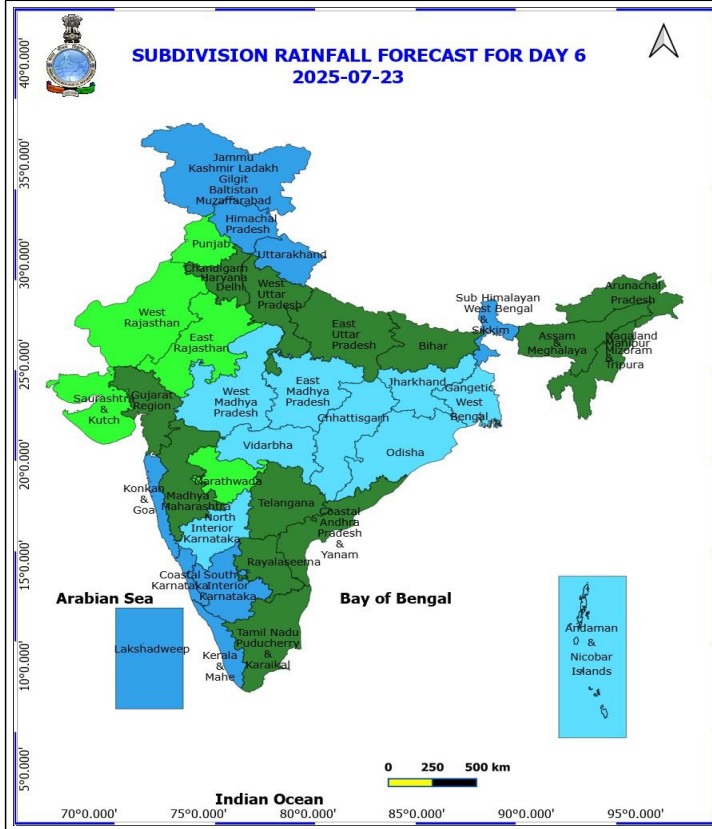
Forecast and warning for any day is valid from 0830 hours IST of day till 0830 hours IST of next day

For more details kindly visit <https://mausam.imd.gov.in> or contact 011-2434-4599

(Service to the nation since 1875)



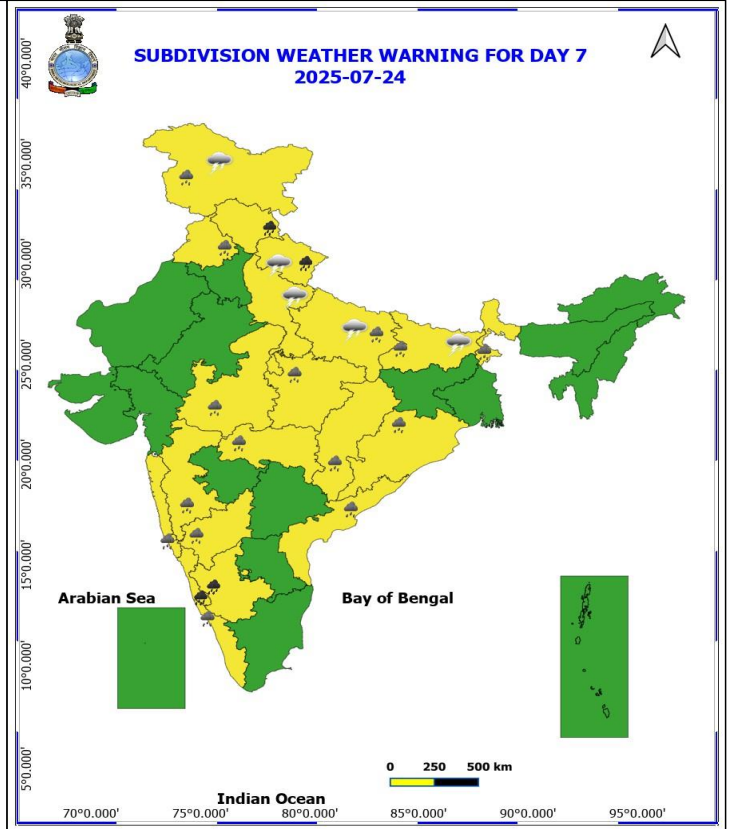
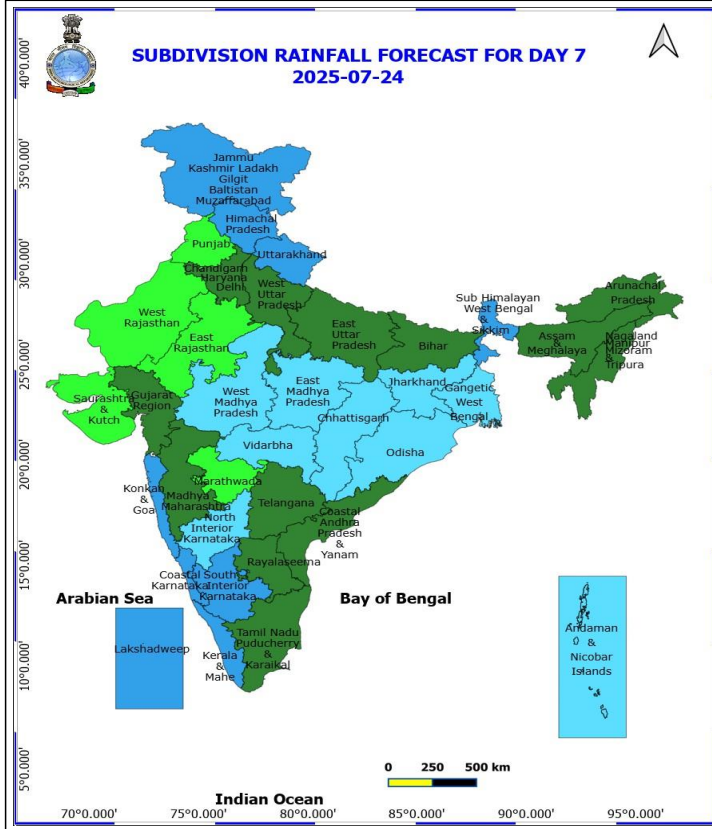
- ♦ Squally weather with wind speed 45 - 55 kmph gusting to 65 likely to prevail over many parts of north Andaman Sea.



23 July (Day 6)

- ❖ **Heavy to Very Heavy Rainfall** likely at isolated places over Coastal Karnataka, Himachal Pradesh, South Interior Karnataka and Uttarakhand.
- ❖ **Heavy Rainfall** likely at isolated places over Bihar, Chhattisgarh, Coastal Andhra Pradesh, East Uttar Pradesh, Jammu-Kashmir-Ladakh-Gilgit-Baltistan-Muzaffarabad, Kerala & Mahe, Konkan & Goa, Madhya Maharashtra, Madhya Pradesh, North Interior Karnataka, Odisha, Punjab, Sub Himalayan West Bengal & Sikkim and Vidarbha.
- ❖ **Thunderstorm accompanied with lightning & gusty winds(30-40kmph)** likely at isolated places over Bihar, Jammu-Kashmir-Ladakh-Gilgit-Baltistan-Muzaffarabad and Uttarakhand.
- ❖ **Thunderstorm accompanied with Lightning** likely at isolated places over Uttar Pradesh.

No Fishermen Warning



24 July (Day 7)

- ❖ **Heavy to Very Heavy Rainfall** likely at isolated places over Coastal Karnataka, Himachal Pradesh, South Interior Karnataka and Uttarakhand.
- ❖ **Heavy Rainfall** likely at isolated places over Bihar, Chhattisgarh, Coastal Andhra Pradesh, East Uttar Pradesh, Jammu-Kashmir-Ladakh-Gilgit-Baltistan-Muzaffargarab, Kerala & Mahe, Konkan & Goa, Madhya Maharashtra, Madhya Pradesh, North Interior Karnataka, Odisha, Punjab, Sub Himalayan West Bengal & Sikkim and Vidarbha.
- ❖ **Thunderstorm accompanied with lightning & gusty winds(30-40kmph)** likely at isolated places over Bihar, Jammu-Kashmir-Ladakh-Gilgit-Baltistan-Muzaffargarab and Uttarakhand.
- ❖ **Thunderstorm accompanied with Lightning** likely at isolated places over Uttar Pradesh.

No Fishermen Warning

Flash Flood Warnings

24 hours Outlook for the Flash Flood Risk (FFR) till 0530 IST of 19-07-2025:

Moderate flash flood risk likely over few watersheds & neighbourhoods of following Met Sub-divisions during next 24 hours.

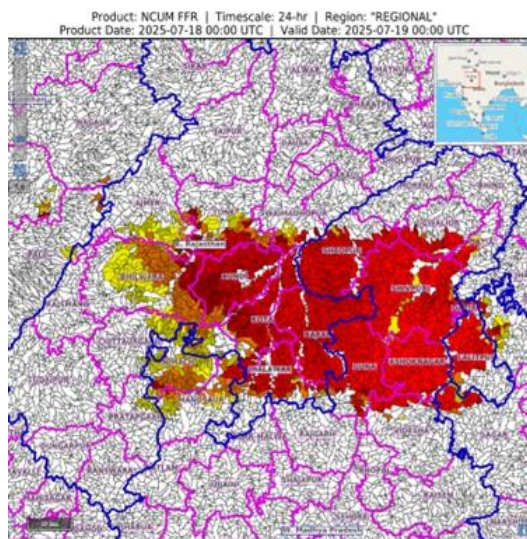
East Rajasthan - Baran, Bundi, Jhalawar, Tonk, Bhilwara, Ajmer, Swaimadhampur, Jhalawar, and Kota districts.

West Uttar Pradesh - Hamirpur, Jalaun, Jhansi, Lalitpur and Mahoba districts.

East Madhya Pradesh - Chhatarpur, Katni, Sagar and Tikamgarh districts.

West Madhya Pradesh - Ashoknagar, Datia, Guna, Gwalior, Morena, Rajgarh, Sheopur, Shivpuri, Neemach, Mandsaur and Videsha districts.

Surface runoff/ Inundation may occur at some fully saturated soils & low-lying areas over Area of Concern (AoC) as shown in map due to expected rainfall occurrence in next 24 hours.



24 hours Outlook for the Flash Flood Risk (FFR) till 0530 IST of 19-07-2025 :

Moderate flash flood risk likely over few watersheds & neighbourhoods of following Met Sub-divisions during next 24 hours.

Coastal Karnataka – Uttar Kannada, Dakshin Kannada and Udupi districts.

Kerala & Mahe - Ernakulam, Idukki, Kannur, Kasargod, Kozikod, Mahe, Malappuram, Palakkad, Pattanamittia, Trishur and Wayanad districts.

Adjoining South Interior Karnataka - Chamarajanagar, Chikmagalur, Shimoga, Kodagu and Mysore districts.

Adjoining Tamil Nadu - Puducherry & Karaikal

- Coimbatore, Dindigul, Nilgiri and Teni districts.

Surface runoff/ Inundation may occur at some fully saturated soils & low-lying areas over Area of Concern (AoC) as shown in map due to expected rainfall occurrence in next 24 hours.

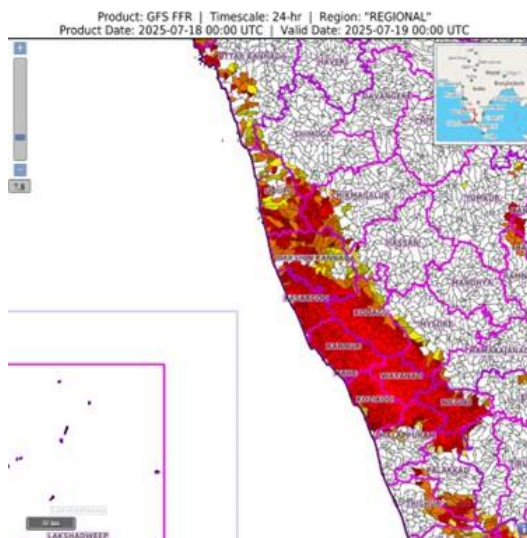




Table-1

7 Days Rainfall Forecast

S.No.	Subdivision	18- Jul	19- Jul	20- Jul	21- Jul	22- Jul	23- Jul	24- Jul
		Day 1	Day 2	Day 3	Day 4	Day 5	Day 6	Day 7
1	ANDAMAN & NICOBAR ISLANDS	FWS	WS	WS	WS	WS	FWS	FWS
2	ARUNACHAL PRADESH	FWS	FWS	FWS	FWS	FWS	SCT	SCT
3	ASSAM & MEHGHALAYA	SCT	FWS	FWS	FWS	FWS	SCT	SCT
4	N. M. M. & T.	FWS	FWS	FWS	FWS	FWS	SCT	SCT
5	S.H. WEST BENGAL & SIKKIM	FWS	FWS	WS	WS	WS	WS	WS
6	GANGETIC WEST BENGAL	SCT	FWS	FWS	SCT	SCT	FWS	FWS
7	ODISHA	SCT	FWS	FWS	FWS	FWS	FWS	FWS
8	JHARKHAND	SCT	SCT	SCT	SCT	FWS	FWS	FWS
9	BIHAR	ISOL	ISOL	SCT	SCT	SCT	SCT	SCT
10	EAST UTTAR PRADESH	SCT	ISOL	SCT	SCT	SCT	SCT	SCT
11	WEST UTTAR PRADESH	FWS	SCT	FWS	FWS	SCT	SCT	SCT
12	UTTARAKHAND	FWS	FWS	WS	WS	WS	WS	WS
13	HARYANA, CHD & DELHI	SCT	SCT	ISOL	FWS	FWS	SCT	SCT
14	PUNJAB	SCT	ISOL	ISOL	FWS	FWS	ISOL	ISOL
15	HIMACHAL PRADESH	WS	FWS	FWS	WS	WS	WS	WS
16	JAMMU AND KASHMIR AND LADAKH	FWS	FWS	FWS	WS	WS	WS	WS
17	WEST RAJASTHAN	FWS	ISOL	ISOL	ISOL	ISOL	ISOL	ISOL
18	EAST RAJASTHAN	WS	FWS	SCT	SCT	ISOL	ISOL	ISOL
19	WEST MADHYA PRADESH	WS	FWS	SCT	SCT	FWS	FWS	FWS
20	EAST MADHYA PRADESH	WS	FWS	FWS	FWS	FWS	FWS	FWS
21	GUJRAT REGION	SCT	SCT	SCT	ISOL	SCT	SCT	SCT
22	SAURASHTRA & KUTCH	SCT	SCT	SCT	ISOL	ISOL	ISOL	ISOL
23	KONKAN & GOA	FWS	FWS	WS	WS	WS	WS	WS
24	MADHYA MAHARASHTRA	SCT	SCT	SCT	SCT	SCT	SCT	SCT
25	MARATHWADA	ISOL	ISOL	ISOL	ISOL	ISOL	ISOL	ISOL
26	VIDARBHA	FWS	SCT	SCT	FWS	FWS	FWS	FWS
27	CHATTISGARH	SCT	SCT	SCT	FWS	FWS	FWS	FWS
28	COASTAL ANDHRA PRADESH	SCT	FWS	FWS	FWS	SCT	SCT	SCT
29	TELANGANA	FWS	FWS	SCT	SCT	SCT	SCT	SCT
30	RAYALASEEMA	SCT	FWS	FWS	FWS	SCT	SCT	SCT
31	TAMILNADU & PUDUCHERRY	SCT	SCT	SCT	SCT	SCT	SCT	SCT
32	COSTAL KARNATAKA	WS	WS	WS	WS	WS	WS	WS
33	NORTH INTERIOR KARNATAKA	WS	WS	FWS	FWS	FWS	FWS	FWS
34	SOUTH INTERIOR KARNATAKA	WS	WS	WS	WS	WS	WS	WS
35	KERALA	WS	WS	WS	WS	WS	WS	WS
36	LAKSHDWEEP	WS	WS	WS	WS	WS	WS	WS

Legend	Category	%Stations
WS	Widespread/Most Places	76-100
FWS	Fairly Widespread/Many Places	51-75
SCT	Scattered/ A Few Places	26-50
ISOL	Isolated Places	1-25
DRY	No Rain	0

***Red color warning does not mean "Red Alert" Red color warning means "Take Action"**
Forecast and warning for any day is valid from 0830 hours IST of day till 0830 hours IST of next day
For more details kindly visit <https://mausam.imd.gov.in> or contact 011-2434-4599

(Service to the nation since 1875)

Fig. 1: Maximum Temperatures Dated 2025-07-18

Fig. 2: Departure of Maximum Temp. Dated 2025-07-18

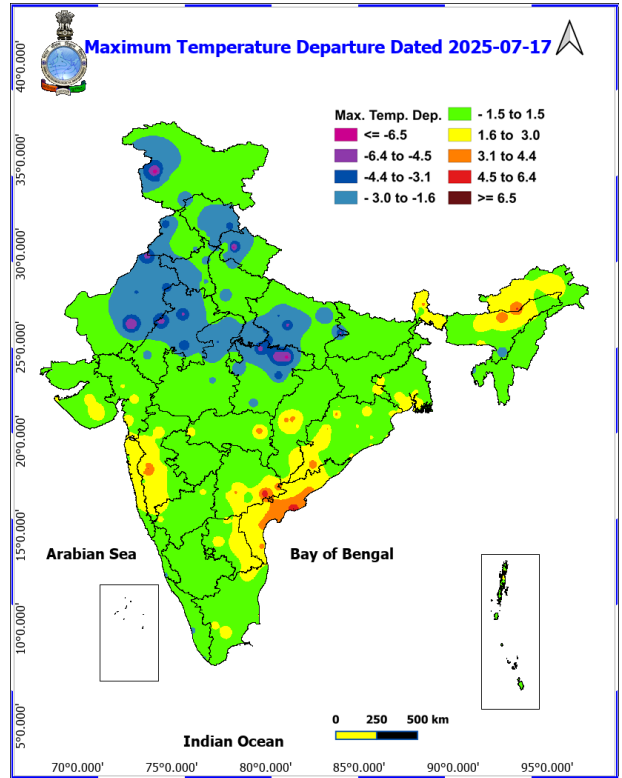
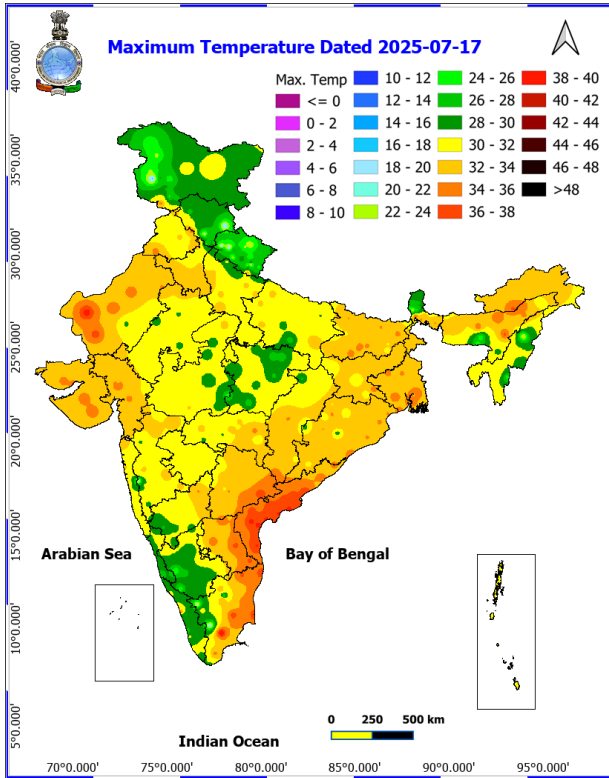
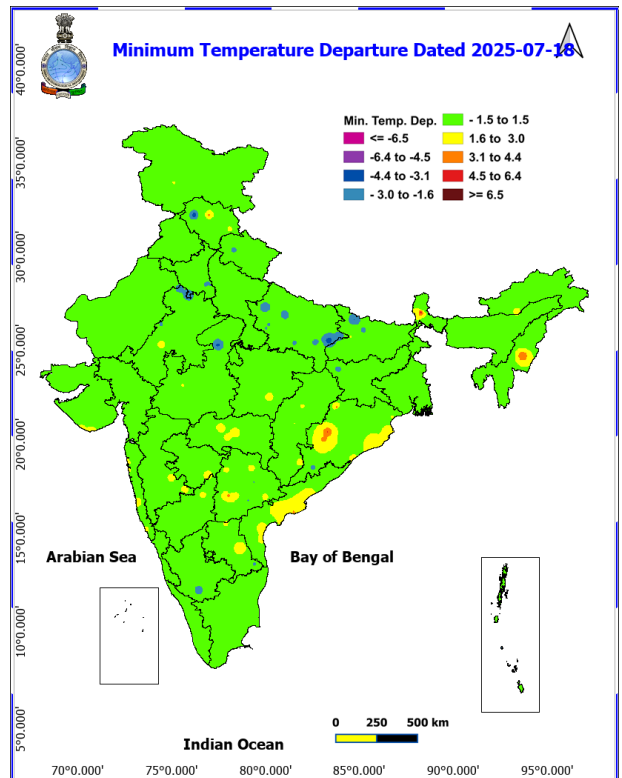
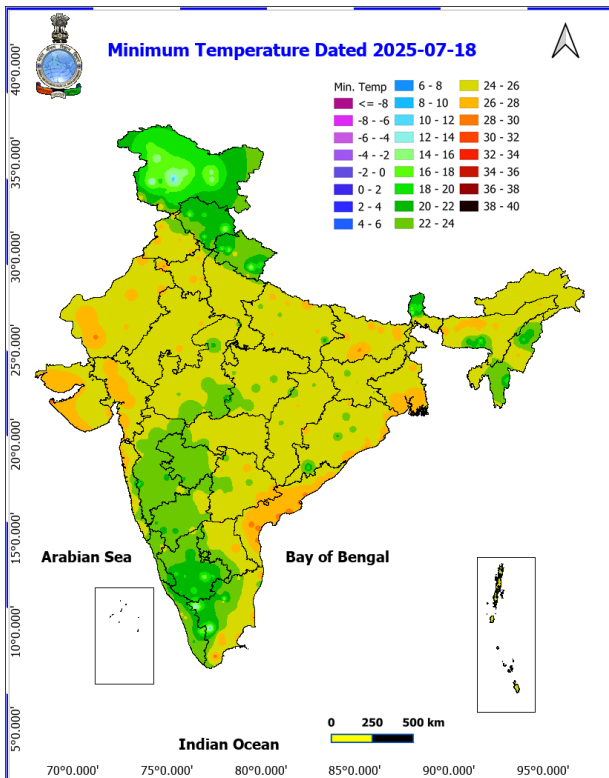


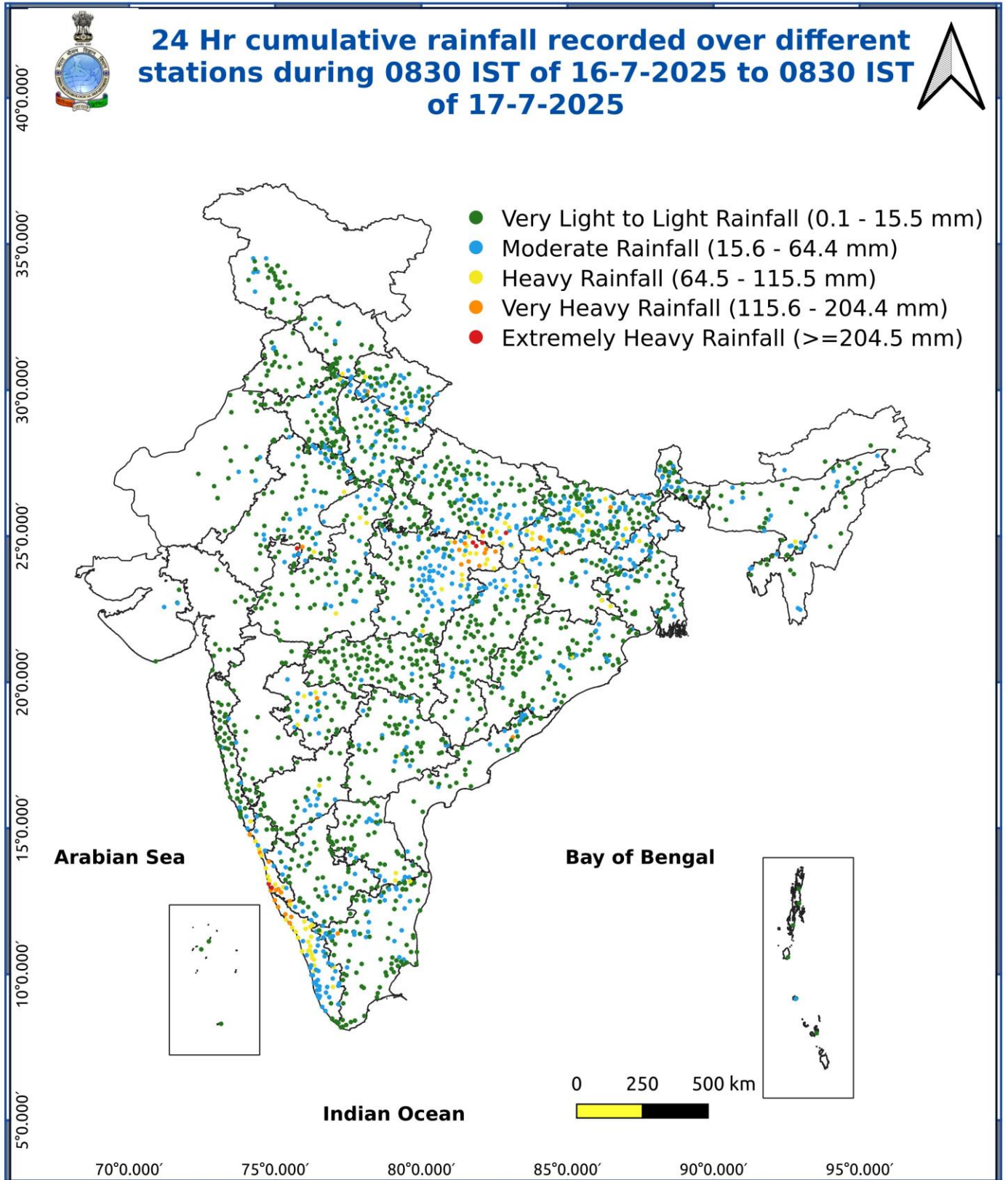
Fig. 3: Minimum Temperatures Dated 2025-07-18

Fig. 4: Departure of Minimum Temp. Dated 2025-07-18



***Red color warning does not mean "Red Alert" Red color warning means "Take Action"**
Forecast and warning for any day is valid from 0830 hours IST of day till 0830 hours IST of next day
For more details kindly visit <https://mausam.imd.gov.in> or contact 011-2434-4599

(Service to the nation since 1875)



***Red color warning does not mean "Red Alert" Red color warning means "Take Action"**
Forecast and warning for any day is valid from 0830 hours IST of day till 0830 hours IST of next day
For more details kindly visit <https://mausam.imd.gov.in> or contact 011-2434-4599

(Service to the nation since 1875)

Impact & Action Suggested

Extremely heavy rainfall (≥ 21 cm) very likely at isolated places over Rajasthan on 18th; Kerala on 19th & 20th and South Interior Karnataka on 18th July.

Very heavy rainfall over Uttarakhand during 20th-23rd; West Uttar Pradesh on 18th, 20th & 21st; Himachal Pradesh during 21st-23rd; Kerala & Mahe, Tamil Nadu, Coastal and South Interior Karnataka during 18th-23rd; West Madhya Pradesh on 18th and Sub-Himalayan West Bengal & Sikkim on 20th July.

Impact Expected

Localized Flooding of roads, water logging in low lying areas and closure of underpasses mainly in urban areas of **(Rajasthan and West Madhya Pradesh)** the above region.

Occasional reduction in visibility due to heavy rainfall.

Disruption of traffic in major cities due to water logging in roads leading to increased travel time.

Minor damage to kutcha roads.

Possibilities of damage to vulnerable structure.

Localized Landslides/Mudslides/landslips/mudslips/landsinks/mudsinks.

Damage to horticulture and standing crops in some areas due to inundation.

It may lead to riverine flooding in some river catchments (for riverine flooding please visit Web page of CWC)

Action Suggested

Check for traffic congestion on your route before leaving for your destination.

Follow any traffic advisories that are issued in this regard.

Avoid going to areas that face the water logging problems often.

Avoid staying in vulnerable structure.

Agromet advisories for various parts of the country

- ◆ In **Jammu & Kashmir**, provide adequate drainage facilities in fields of maize and transplanted rice in **Sub Tropical Zone** and maize fields in **Intermediate Zone**.
- ◆ In **Uttarakhand**, ensure proper drainage facilities in soybean, maize, barnyard millet, finger millet, pigeon pea, kidney beans, vegetables and orchards. Harvest matured vegetables and fruits and store in safe place.
- ◆ In **Madhya Pradesh**, make provision to drain out excess water from rice nurseries and fields of soybean, maize and vegetables in **Kymore Plateau and Satpura Hill Zone**, rice, vegetables and fruit orchards in **Bundelkhand Zone** and soybean and pearl millet in **Gird Zone**.
- ◆ In **Chhattisgarh**, make arrangements for drainage of excess water from fields of rice, maize, pigeon pea, minor millets and vegetables. Provide mechanical support to tall/weak crops with stakes or bamboo to prevent lodging or breakage.
- ◆ In **Jharkhand**, make necessary arrangements to drain out excess water from maize fields, rice and vegetable nurseries. Cover the vegetable nurseries with polythene sheets.
- ◆ In **Bihar**, do not allow rain water to stagnate in fields of maize, ragi, kodo, Sava, and vegetables in **North East Alluvial Zone** and ensure proper drainage in maize and vegetable crops in low-lying areas of **South Bihar**

***Red color warning does not mean "Red Alert" Red color warning means "Take Action"**

Forecast and warning for any day is valid from 0830 hours IST of day till 0830 hours IST of next day

For more details kindly visit <https://mausam.imd.gov.in> or contact 011-2434-4599

(Service to the nation since 1875)

Alluvial Zone.

- ♦ Drain out excess water from rice and finger millet nurseries, groundnut, vegetables and orchards in **Konkan** and rice and finger millet nurseries in **ghat areas** of **Madhya Maharashtra**.
- ♦ In **Coastal Karnataka**, drain out excess water from rice nurseries, transplanted rice fields and plantations of arecanut and coconut in **Coastal Zone** and from rice nurseries and fields of maize, cotton and ginger and plantations of arecanut in **Hill Zone**. In **South Interior Karnataka**, make necessary arrangements to drain out excess water from fields of paddy, maize, black gram, green gram, field bean, cowpea, sugarcane, vegetables, ginger and plantations of coffee, pepper, cardamom, arecanut and banana in **Southern Dry Zone** and rice nurseries, fields of paddy, finger millet, maize and plantations of arecanut and black pepper in **Southern Transition Zone**.
- ♦ In **Kerala**, ensure proper drainage facilities in rice nurseries, transplanted rice fields, coconut and banana plantations to prevent water logging. Undertake propping in banana to protect the plants from heavy rains.

Livestock / Fishery

- ♦ Keep the animals inside the shed during heavy rainfall and provide them balanced feed.
- ♦ Store feed and fodder in a safe place to prevent spoilage.
- ♦ Construct an outlet with proper netting around the ponds to drain out excess water, thereby preventing fish from escaping in case of overflow.

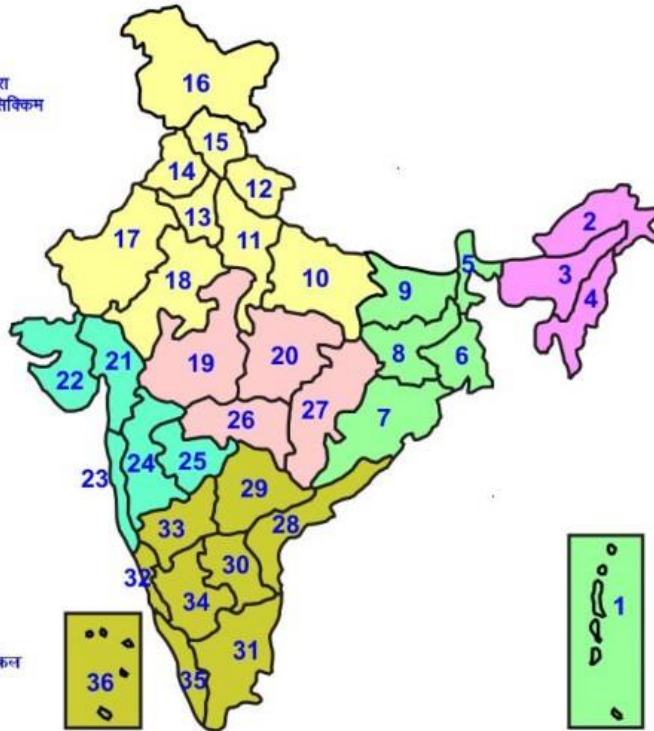
Agromet advisories for likely impact of Thunderstorm / Gusty Winds / Squally Winds

(Based on the IBF and advisories issued by different AMFUs)

- ♦ Provide mechanical support to horticultural crops and staking or support to vegetables and young fruit plants / fruit-bearing plants to avoid lodging due to strong winds.

LEGENDS

- 1 अंडमान और निकोबार द्वीप समुह
- 2 अरुणाचल प्रदेश
- 3 असम और मेघालय
- 4 नागालैंड मनीपुर मीजोरम और त्रिपुरा
- 5 उप हिमालय पश्चिम बंगाल एवं सिक्किम
- 6 पश्चिम बंगाल
- 7 ओडिसा
- 8 झारखंड
- 9 बिहार
- 10 पूर्वी उत्तर प्रदेश
- 11 पश्चिम उत्तर प्रदेश
- 12 उत्तराखंड
- 13 हरियाणा चंडिगढ़ एवं दिल्ली
- 14 पंजाब
- 15 हिमाचल प्रदेश
- 16 जम्मू एवं कश्मीर एवं लद्दाख
- 17 पश्चिम राजस्थान
- 18 पूर्वी राजस्थान
- 19 पश्चिम मध्य प्रदेश
- 20 पूर्वी मध्य प्रदेश
- 21 गुजरात क्षेत्र
- 22 सौराष्ट्र एवं कच्छ
- 23 कोंकण एवं गोवा
- 24 मध्य महाराष्ट्र
- 25 मराठावाडा
- 26 विदर्भ
- 27 छत्तीसगढ़
- 28 तटीय आंध्र प्रदेश एवं यनम
- 29 तेलंगाना
- 30 रायलसीमा
- 31 तमिलनाडु, पुदुचेरी एवं कराईकल
- 32 तटिय कर्नाटक
- 33 आंतरिक उत्तरी कर्नाटक
- 34 आंतरिक दक्षिणी कर्नाटक
- 35 केरल एवं माहे
- 36 लक्षद्वीप



1. Andaman & Nicobar Islands
2. Arunachal Pradesh
3. Assam & Meghalaya
4. Nagaland, Manipur, Mizoram & Tripura
5. Sub-Himalayan West Bengal & Sikkim
6. Gangetic West Bengal
7. Orissa
8. Jharkhand
9. Bihar
10. East Uttar Pradesh
11. West Uttar Pradesh
12. Uttarakhand
13. Haryana, Chd & Delhi
14. Punjab
15. Himachal Pradesh
16. Jammu & Kashmir and Ladakh
17. West Rajasthan
18. East Rajasthan
19. West Madhya Pradesh
20. East Madhya Pradesh
21. Gujarat
22. Saurashtra
23. Konkan & Goa
24. Madhya Maharashtra
25. Marathwada
26. Vidharbha
27. Chhattisgarh
28. Coastal Andhra Pradesh & Yanam
29. Telangana
30. Rayalaseema
31. Tamilnadu, Puducherry & Karaikal
32. Coastal Karnataka
33. North Interior Karnataka
34. South Interior Karnataka
35. Kerala & Mahe
36. Lakshadweep

SPATIAL DISTRIBUTION (% of Stations reporting)

% Stations	Category	% Stations	Category
76-100	Widespread (WS/ Most Places)	26-50	Scattered (SCT/ A Few Places)
51-75	Fairly Widespread (FWS/ Many Places)	1-25	Isolated (ISOL)

Subdivision Colour

- NO WARNING
- WATCH (BE UPDATED)
- ALERT (BE PREPARED TO TAKE ACTION)
- WARNING (TAKE ACTION)

Probabilistic Forecast

Terms	Probability of Occurrence (%)
Unlikely	< 25
Likely	25 - 50
Very Likely	50 - 75
Most Likely	> 75

- | | | | |
|--------------------------|-----------------|----------------------|--------------------|
| Heavy Rain | Very Heavy Rain | Extremely Heavy Rain | Heavy Snow |
| Thunderstorm & Lightning | Hailstorm | Dust Storm | Dust Raising Winds |
| Strong surface winds | Heat Wave | Hot Day | Warm Night |
| Cold Wave | Cold Day | Ground Frost | Fog |
| Hot & Humid | | | |

*Red color warning does not mean "Red Alert" Red color warning means "Take Action"

Forecast and warning for any day is valid from 0830 hours IST of day till 0830 hours IST of next day

For more details kindly visit <https://mausam.imd.gov.in> or contact 011-2434-4599

(Service to the nation since 1875)

LEGENDS

WARNING

WARNING (TAKE ACTION)
ALERT (BE PREPARED)
WATCH (BE UPDATED)
NO WARNING (NO ACTION)

Probabilistic Forecast

Terms	Probability of Occurrence (%)
Unlikely	< 25
Likely	25 - 50
Very Likely	50 - 75
Most Likely	> 75



Heavy: 64.5 to 115.5 mm/cm *
Very Heavy: 115.6 to 204.4 mm/cm *
Extremely Heavy: > 204.4 mm/cm *



When maximum temperature of a station reaches $\geq 40^{\circ}\text{C}$ for plains and $\geq 30^{\circ}\text{C}$ for hilly regions
(a) Based on Departure from normal

Heat Wave: Maximum Temperature Departure from normal 4.5°C to 6.4°C .
Severe Heat Wave: Maximum Temperature Departure from normal $\geq 6.5^{\circ}\text{C}$

(b). Based on Actual maximum temperature

Heat Wave: When actual maximum temperature $\geq 45^{\circ}\text{C}$.
Severe Heat Wave: When actual maximum temperature $\geq 47^{\circ}\text{C}$

(c). Criteria for heat wave for coastal stations

When maximum temperature departure is $> 4.5^{\circ}\text{C}$ from normal. Heat Wave may be described provided maximum temperature $\geq 37^{\circ}\text{C}$



When maximum temperature remains 40°C

Warm Night: When minimum temperature departure 4.5°C to 6.4°C .
Severe Warm Night: When minimum temperature departure $> 6.4^{\circ}\text{C}$.



When minimum temperature of a station $\leq 10^{\circ}\text{C}$ for plains and $\leq 0^{\circ}\text{C}$ for hilly regions.

(a). Based on departure

Cold Wave: Minimum Temperature Departure from normal -4.5°C to -6.4°C .
Severe Cold Wave: Minimum Temperature Departure from normal $\leq -6.5^{\circ}\text{C}$

(b) Based on actual Minimum Temperature (for Plains only)

Cold Wave : When Minimum Temperature is $\leq 4.0^{\circ}\text{C}$
Severe Cold Wave: When Minimum Temperature is $\leq 2.0^{\circ}\text{C}$

(c) For Coastal Stations

When Minimum Temperature departure is $\leq -4.5^{\circ}\text{C}$ & actual Minimum Temperature is $\leq 15^{\circ}\text{C}$



When minimum temperature of a station $\leq 10^{\circ}\text{C}$ for plains and $\leq 0^{\circ}\text{C}$ for hilly regions
Based on departure

Cold Day: Maximum Temperature Departure from normal -4.5°C to -6.4°C .
Severe Cold Day: Maximum Temperature Departure from normal $\leq -6.5^{\circ}\text{C}$



Phenomenon of small droplets suspended in air and the horizontal visibility $< 1\text{km}$

Moderate Fog: When the visibility between 500-200 metres
Dense Fog: when the visibility between 50- 200 metres
Very Dense Fog: when the visibility < 50 metres



Sudden electrical discharges manifested by a flash of light (Lightning) and a sharp rumbling sound (thunder)



An ensemble of particles of dust or sand energetically lifted to great heights by a strong and turbulent wind.



Ice deposits on ground

Air temperature $\leq 4^{\circ}\text{C}$ (over Plains)



A strong wind that rises suddenly, lasts for atleast 1 minute.

Moderate: Wind speed 52-61 kmph
Severe: Wind speed 62-87 kmph
Very Severe: Wind speed > 87 kmph



Effect of various waves in the sea over specific area

Rough to very rough: Wind speed 41-62 kmph (22-33 knots) & Wave height 2.5-6 metre
High to very high: Wind speed 63-117 kmph (34-63 knots) & Wave height 6-14 metre
Phenomenal: Wind speed > 117 kmph (> 63 knots) & Wave height > 14 metre



Cyclonic Storm: Wind speed 62-87 kmph (34-47 knots)
Severe Cyclonic Storm: Wind speed 88-117 kmph (48-63 knots)
Very Severe Cyclonic Storm: Wind speed 118-165 kmph (64 - 89 knots)
Extremely Severe Cyclonic Storm: Wind speed 166-220 kmph (90 -119 knots)
Super Cyclone Storm: Wind speed > 220 kmph (> 119 knots)

*Red color warning does not mean "Red Alert" Red color warning means "Take Action"

Forecast and warning for any day is valid from 0830 hours IST of day till 0830 hours IST of next day

For more details kindly visit <https://mausam.imd.gov.in> or contact 011-2434-4599

(Service to the nation since 1875)