

2025-08-08

Time of Issue: 07:26:00 hours IST
(Morning)

ALL INDIA WEATHER SUMMARY AND FORECAST BULLETIN

Significant Weather Features

Weather Forecast and Warnings:

Northwest India:

- Isolated **heavy rainfall** likely over Uttarakhand, Himachal Pradesh and Punjab during 08th & 12th; Haryana on 11th & 12th; Uttar Pradesh on 08th, 11th & 12th August.
- Light/moderate rainfall at many places accompanied with thunderstorm & lightning likely over Western Himalayan region and many/some places over the plains during next 7 days.

South Peninsular India:

- Isolated **heavy rainfall** likely over Tamil Nadu, Kerala & Mahe, Karnataka, Coastal Andhra Pradesh & Yanam, Telangana, Rayalaseema during 08th-09th August.
- Strong surface winds (speed reaching 40-50 kmph) very likely over South Peninsular India during next 2 days.
- Light to moderate rainfall at some/many places accompanied with thunderstorm & lightning likely over Tamil Nadu, Kerala & Mahe, Lakshadweep, Karnataka, Rayalaseema, Coastal Andhra Pradesh & Yanam and Telangana during next 5 days.

Northeast India:

- **Extremely heavy rainfall (≥ 21 cm)** very likely at isolated places over Arunachal Pradesh on 08th August.
- Light/moderate rainfall at many places accompanied with thunderstorm, lightning and isolated **heavy rainfall** likely to continue over Arunachal Pradesh, Assam & Meghalaya, Nagaland, Manipur, Mizoram & Tripura during 08th-12th August; Arunachal Pradesh during 08th-11th and Assam & Meghalaya, Nagaland, Manipur, Mizoram & Tripura on 08th August.

East & Central India:

- Isolated **heavy rainfall** likely over Sub-Himalayan West Bengal & Sikkim, Bihar during 08th-12th; Odisha, Gangetic West Bengal and Jharkhand on 08th; Chhattisgarh on 11th & 12th August **with isolated very heavy rainfall over Bihar on 08th; Sub-Himalayan West Bengal & Sikkim during 08th & 11th August.**
- Light to moderate rainfall at most/many places accompanied with thunderstorm & lightning likely over the region during next 5 days.

West India:

- Isolated **heavy rainfall** likely over Marathwada, Konkan & Goa on 08th August.
- Light to moderate rainfall at many/some places very likely over the region during next 5-6 days.

*Red color warning does not mean "Red Alert" Red color warning means "Take Action"

Forecast and warning for any day is valid from 0830 hours IST of day till 0830 hours IST of next day

For more details kindly visit <https://mausam.imd.gov.in> or contact 011-2434-4599

(Service to the nation since 1875)

Main Weather Observations:

- ❖ **Rainfall distribution** (from 0830 hours IST of yesterday to 0530 hours IST of today): **at most places** over Rayalaseema, Assam & Meghalaya, Nagaland, Manipur, Mizoram & Tripura, Gangetic West Bengal, Odisha, Jharkhand, Arunachal Pradesh, Uttarakhand, East Uttar Pradesh, Chhattisgarh, Vidarbha, Andaman & Nicobar Islands, Telangana and Coastal Karnataka; **at many places** over Bihar, Coastal Andhra Pradesh & Yanam, Saurashtra & Kutch, Konkan & Goa, Madhya Maharashtra, East Madhya Pradesh, Tamilnadu Puducherry & Karaikal, North Interior Karnataka, South Interior Karnataka, Kerala & Mahe and Lakshadweep; **Dry** over rest of the country.
- ❖ **Significant rainfall recorded(in cm)** (from 0830 hours IST of yesterday to 0530 hours IST of today): **Rayalaseema:** Tirupathi (dist Tirupati) 9; East Uttar Pradesh: Sultanpur-obs2 (dist Sultanpur) 7.
- ❖ **Heavy Rainfall observed** (from 0830 hours IST of yesterday to 0530 hours IST of today): **Heavy rain** at a few places over Telangana and Rayalaseema, at isolated places over East Uttar Pradesh
- ❖ **Minimum Temperature Departures (as on 07-08-2025): markedly above normal(> 5.1°C)** at isolated places over Assam & Meghalaya, East Uttar Pradesh, West Uttar Pradesh, Himachal Pradesh, East Rajasthan, West Madhya Pradesh and East Madhya Pradesh. **appreciably above normal(3.1°C to 5.0°C)** at few places over Sub Himalayan West Bengal & Sikkim and Vidarbha; at isolated places over Odisha, Gujarat Region, Saurashtra & Kutch, Marathwada, Coastal Andhra Pradesh & Yanam and North Interior Karnataka. **above normal(1.6°C to 3.0°C)** at few places over Bihar, Madhya Maharashtra, Telangana and Rayalaseema; at isolated places over Nagaland, Manipur, Mizoram & Tripura, Gangetic West Bengal, Uttarakhand, Haryana-Chandigarh-Delhi, Chhattisgarh, Tamil Nadu, Puducherry & Karaikal and South Interior Karnataka. **near normal(-1.5°C to 1.5°C)** at many places over Jharkhand and Punjab; at most places over Andaman & Nicobar Islands, Arunachal Pradesh, West Rajasthan, Konkan & Goa, Coastal Karnataka, Kerala & Mahe and Lakshadweep; at isolated places over Jammu-KashmirLadakh-Gilgit-Baltistan-Muzaffarabad. **The lowest minimum temperature** of 18.5°C is reported at KARUR PARAMATHI (TAMIL NADU) over the Plains of India.
- ❖ **Maximum Temperature Departures (as on 07-08-2025): markedly above normal(> 5.1°C)** at isolated places over Odisha, Madhya Maharashtra, Vidarbha and Chhattisgarh. **appreciably above normal(3.1°C to 5.0°C)** at few places over West Madhya Pradesh, East Madhya Pradesh, Gujarat Region, Marathwada, Coastal Andhra Pradesh & Yanam and Telangana; at isolated places over Assam & Meghalaya, Uttarakhand, Haryana-Chandigarh-Delhi, Himachal Pradesh, East Rajasthan, Saurashtra & Kutch and North Interior Karnataka. **above normal(1.6°C to 3.0°C)** at few places over West Uttar Pradesh, Punjab and Rayalaseema; at isolated places over Andaman & Nicobar Islands, Jharkhand, Bihar, West Rajasthan, Tamil Nadu, Puducherry & Karaikal, South Interior Karnataka and Kerala & Mahe. **near normal(-1.5°C to 1.5°C)** at many places over Gangetic West Bengal; at most places over Sub Himalayan West Bengal & Sikkim, East Uttar Pradesh, Jammu-KashmirLadakh-Gilgit-Baltistan-Muzaffarabad, Konkan & Goa, Coastal Karnataka and Lakshadweep; at isolated places over Nagaland, Manipur, Mizoram & Tripura. **The highest maximum temperature** of 40.0°C is reported at MADURAI (A) (TAMIL NADU).

***Red color warning does not mean "Red Alert" Red color warning means "Take Action"**

Forecast and warning for any day is valid from 0830 hours IST of day till 0830 hours IST of next day

For more details kindly visit <https://mausam.imd.gov.in> or contact 011-2434-4599

(Service to the nation since 1875)

Meteorological Analysis (Based on 0530 hours IST)

- The **monsoon trough** at mean sea level now passes through Ferozepur, Patiala, Meerut, Bareilly, Lucknow, Varanasi, Daltonganj, Bankura and thence southeastwards to northeast Bay of Bengal.

The **upper air cyclonic circulation** over Gangetic West Bengal & adjoining north Odisha now lies over Bangladesh & west Bengal coasts and adjoining areas of northwest Bay of Bengal between 3.1 and 5.8 km above mean sea level tilting southwestwards with height.

A trough runs from northeast Uttar Pradesh to south Bangladesh across Bihar, Jharkhand, northern parts of Gangetic West Bengal between 1.5 & 3.1 km above mean sea level.

An **upper air cyclonic circulation** lies over north interior Karnataka and neighbourhood at 5.8 km above mean sea level.

The **upper air cyclonic circulation** over southwest Bay off North Tamil Nadu coasts now lies over south coastal Andhra Pradesh at 3.1 km above mean sea level.

The **Western Disturbance** as a cyclonic circulation over north Punjab & neighbourhood at 5.8 km above mean sea level and the trough aloft in middle tropospheric level with its axis at 7.6 km above mean sea level roughly along Long. 76°E to north of Lat. 32°N persisted.

The **upper air cyclonic circulation** over central parts of Bangladesh between 3.1 & 5.8 km tilting southwestward with height has become less marked.

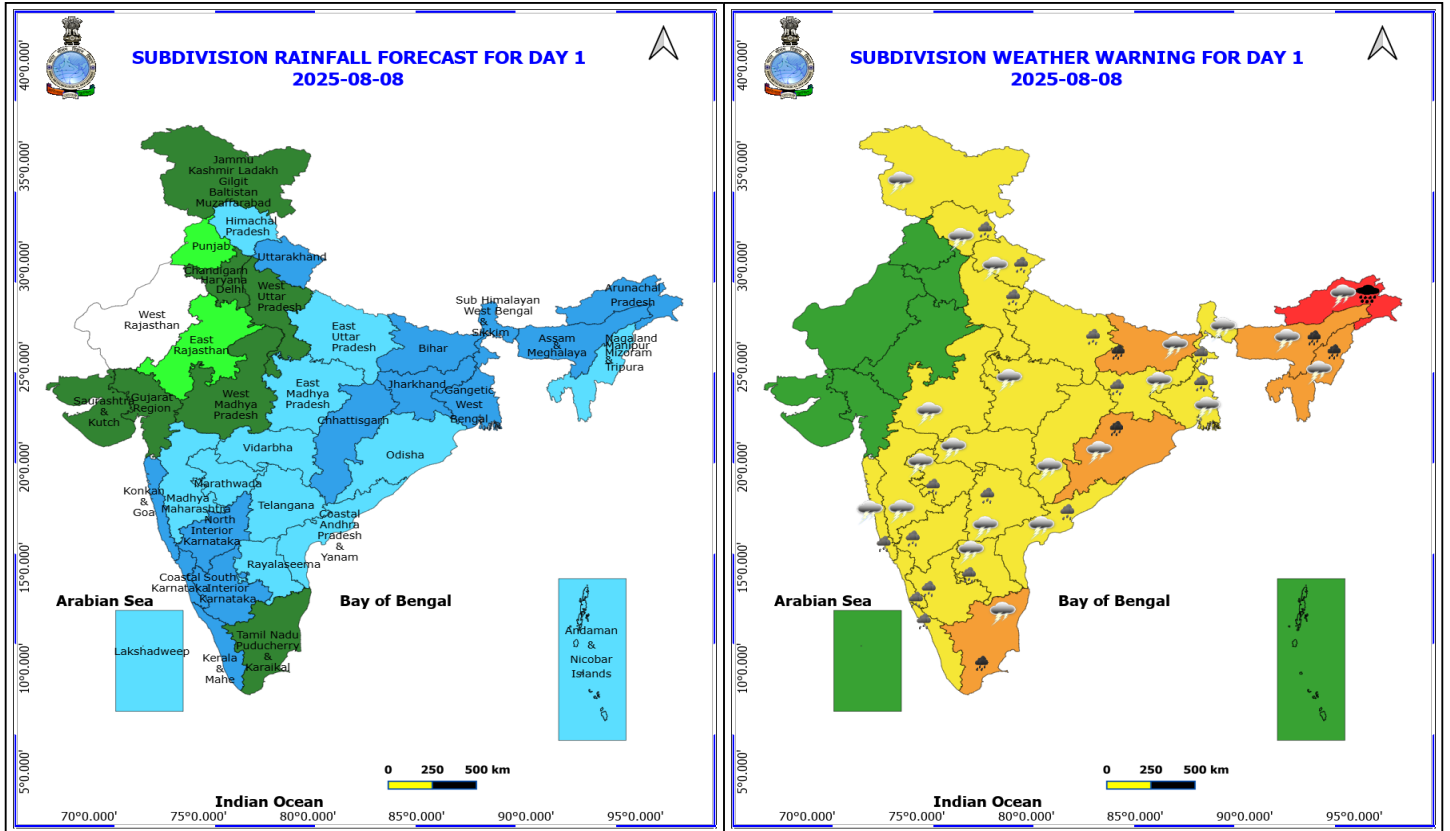
The **upper air cyclonic circulation** over Himachal Pradesh & adjoining Uttarakhand extended upto 1.5 km above mean sea level has become less marked.

The **upper air cyclonic circulation** over northeast Assam & adjoining Arunachal Pradesh extending upto 3.1 km above mean sea level has become less marked.

The east-west **trough** from Coastal Karnataka to central parts of south Bay of Bengal across South Interior Karnataka, south Rayalaseema, north Tamil Nadu between 1.5 & 3.1 km above mean sea level has become less marked.

Weather Forecast for next 7 days (Upto 0530 hours IST of 14 August)

- Fairly widespread to widespread rainfall likely over the most parts of the country except Madhya Maharashtra and Marathwada where Isolated rainfall is likely.

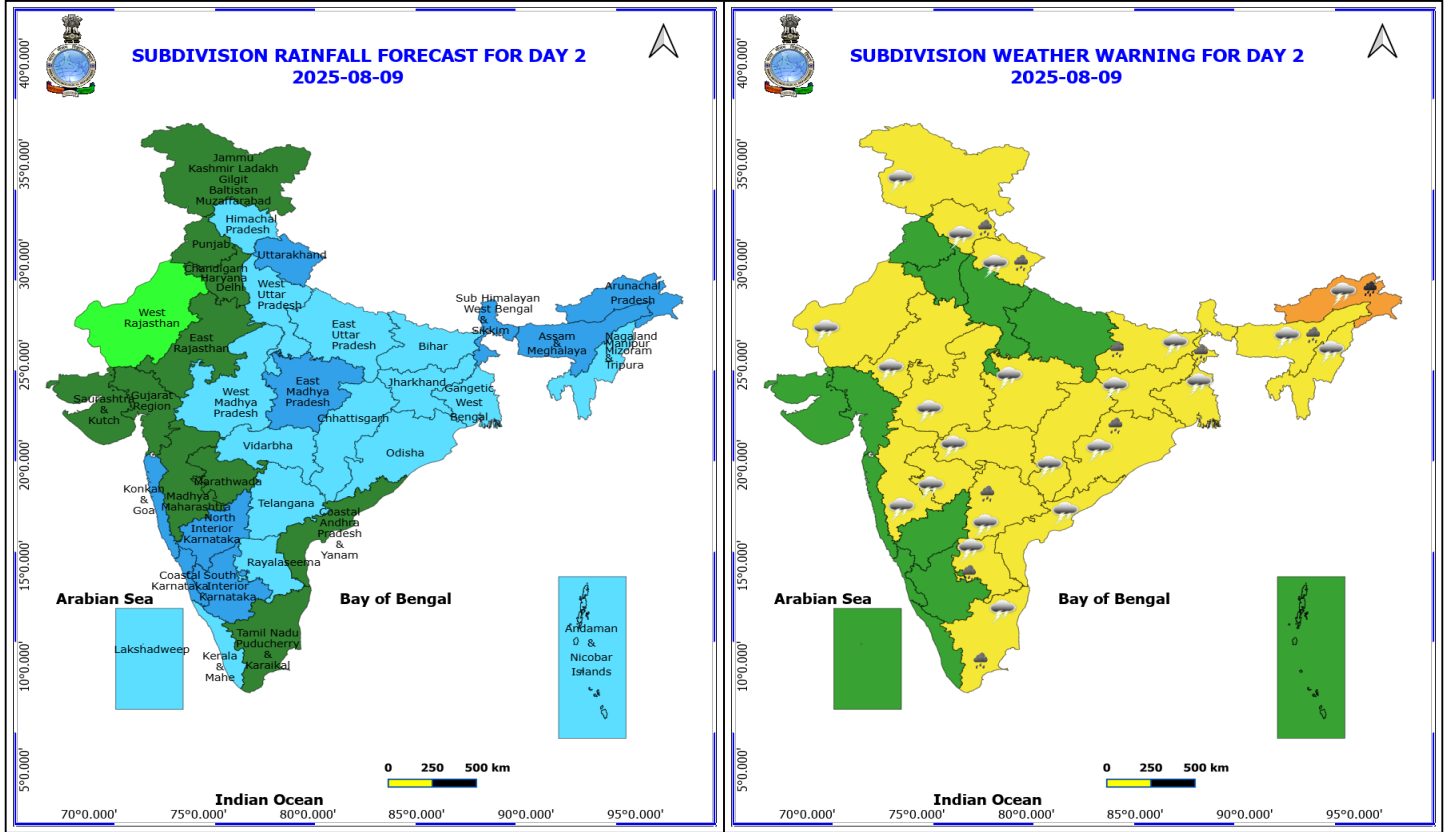


8 August (Day 1)

- ❖ **Heavy to Very Heavy Rainfall with isolated Extremely Heavy Rainfall** very likely at isolated places over Arunachal Pradesh.
 - ❖ **Heavy to Very Heavy Rainfall** very likely at isolated places over Assam & Meghalaya, Bihar, Nagaland, Manipur, Mizoram and Tripura, Odisha and Tamil Nadu Puducherry & Karaikal.
 - ❖ **Heavy Rainfall** very likely at isolated places over Andhra Pradesh, Himachal Pradesh, Jharkhand, Karnataka, Kerala & Mahe, Konkan & Goa, Marathwada, Telangana, Uttar Pradesh, Uttarakhand and West Bengal & Sikkim.
 - ❖ **Thunderstorm accompanied with lightning & gusty winds(30-40kmph)** very likely at isolated places over Bihar, Jharkhand, Odisha and West Bengal & Sikkim.
 - ❖ **Thunderstorm accompanied with Lightning** very likely at isolated places over Andhra Pradesh, Arunachal Pradesh, Assam & Meghalaya, Chhattisgarh, Himachal Pradesh, Jammu-Kashmir-Ladakh-Gilgit-Baltistan-Muzaffarabad, Konkan & Goa, Madhya Pradesh, Maharashtra, Nagaland, Manipur, Mizoram and Tripura, Tamil Nadu Puducherry & Karaikal, Telangana and Uttarakhand.
- **Squally wind with speed reaching 45 kmph to 55 kmph gusting to 65 kmph** is likely to prevail along and off Somalia, few parts of westcentral Arabian Sea, some parts of southwest Arabian Sea, many parts of northwest Arabian sea.
 - **Squally weather with wind speed reaching 35 - 45 kmph gusting to 55 kmph** likely to prevail over south Sri Lanka coast, few parts of southwest Bay of Bengal, few parts of Comorin area adjoining Gulf of Mannar.

***Red color warning does not mean "Red Alert" Red color warning means "Take Action"**
Forecast and warning for any day is valid from 0830 hours IST of day till 0830 hours IST of next day
For more details kindly visit <https://mausam.imd.gov.in> or contact 011-2434-4599

(Service to the nation since 1875)



9 August (Day 2)

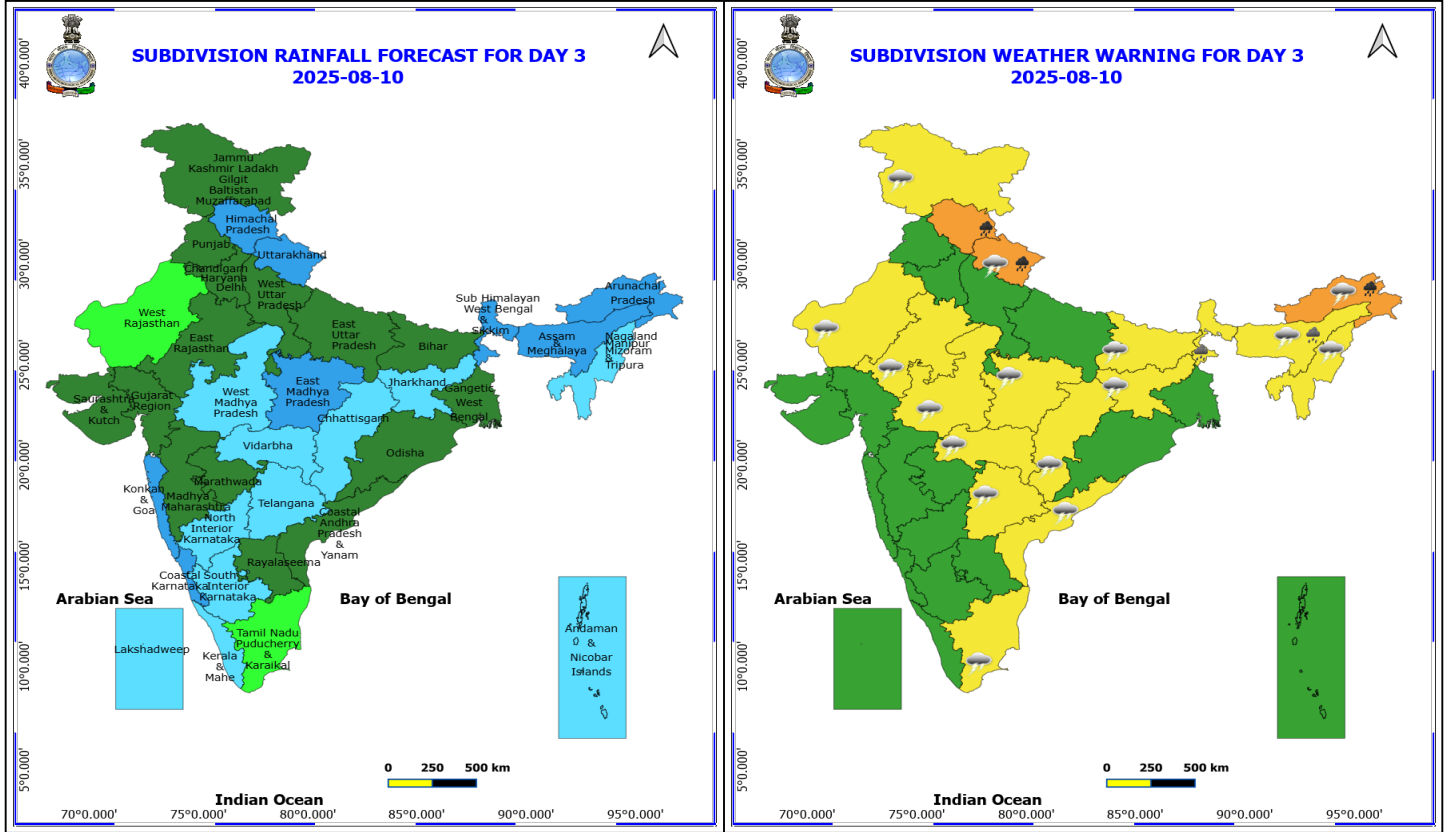
- ❖ **Heavy to Very Heavy Rainfall** very likely at isolated places over Arunachal Pradesh.
- ❖ **Heavy Rainfall** very likely at isolated places over Assam & Meghalaya, Bihar, Himachal Pradesh, Odisha, Rayalaseema, Sub Himalayan West Bengal & Sikkim, Tamil Nadu Puducherry & Karaikal, Telangana and Uttarakhand.
- ❖ **Thunderstorm accompanied with lightning & gusty winds(30-40kmph)** very likely at isolated places over Bihar, Gangetic West Bengal, Jharkhand and Odisha.
- ❖ **Thunderstorm accompanied with Lightning** very likely at isolated places over Andhra Pradesh, Arunachal Pradesh, Assam & Meghalaya, Chhattisgarh, Himachal Pradesh, Jammu-Kashmir-Ladakh-Gilgit-Baltistan-Muzaffarabad, Madhya Pradesh, Maharashtra, Nagaland, Manipur, Mizoram and Tripura, Rajasthan, Tamil Nadu Puducherry & Karaikal, Telangana and Uttarakhand.
- **Squally wind with speed reaching 45 kmph to 55 kmph gusting to 65 kmph** is likely to prevail along and off Somalia, few parts of westcentral Arabian Sea, some parts of southwest Arabian Sea, some parts of northwest Arabian sea.
- **Squally weather with wind speed reaching 35 - 45 kmph gusting to 55 kmph** likely to prevail over south Sri Lanka coast, some parts of southwest Bay of Bengal, Gulf of Mannar adjoining Comorin area.

***Red color warning does not mean "Red Alert" Red color warning means "Take Action"**

Forecast and warning for any day is valid from 0830 hours IST of day till 0830 hours IST of next day

For more details kindly visit <https://mausam.imd.gov.in> or contact 011-2434-4599

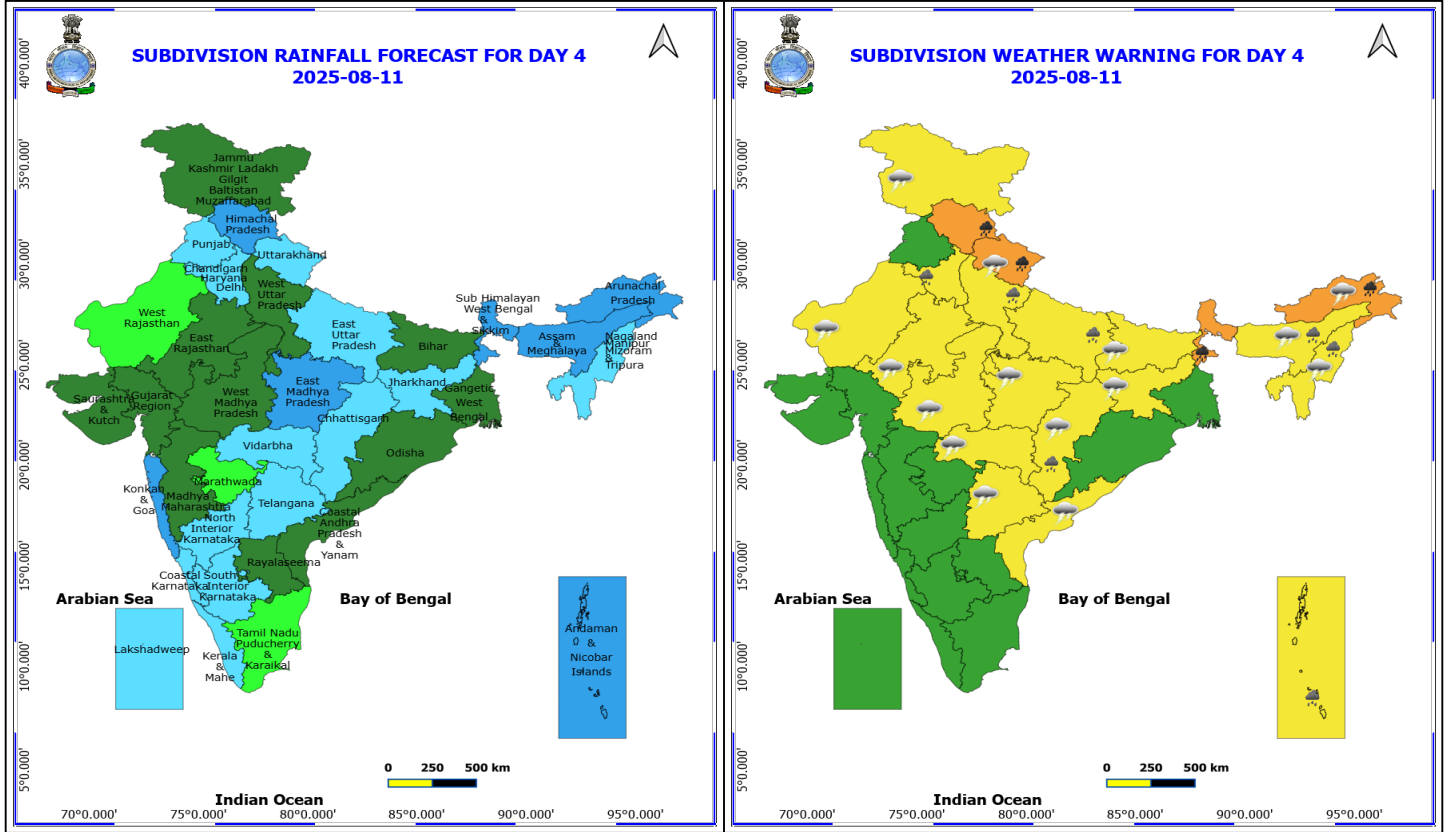
(Service to the nation since 1875)



10 August (Day 3)

- ❖ **Heavy to Very Heavy Rainfall** very likely at isolated places over Arunachal Pradesh, Himachal Pradesh and Uttarakhand.
 - ❖ **Heavy Rainfall** very likely at isolated places over Assam & Meghalaya and Sub Himalayan West Bengal & Sikkim.
 - ❖ **Thunderstorm accompanied with lightning & gusty winds(30-40kmph)** very likely at isolated places over Bihar and Jharkhand.
 - ❖ **Thunderstorm accompanied with Lightning** very likely at isolated places over Arunachal Pradesh, Assam & Meghalaya, Chhattisgarh, Coastal Andhra Pradesh, Jammu-Kashmir-Ladakh-Gilgit-Baltistan-Muzaffarabad, Madhya Pradesh, Nagaland, Manipur, Mizoram and Tripura, Rajasthan, Tamil Nadu Puducherry & Karaikal, Telangana, Uttarakhand and Vidarbha.
- **Squally wind with speed reaching 45 kmph to 55 kmph gusting to 65 kmph** is likely to prevail along and off Somalia & Oman coasts, some parts of westcentral Arabian Sea, some parts of southwest Arabian Sea.
 - **Squally weather with wind speed reaching 35 - 45 kmph gusting to 55 kmph** likely to prevail over some parts of southwest Bay of Bengal, Gulf of Mannar adjoining Comorin area.

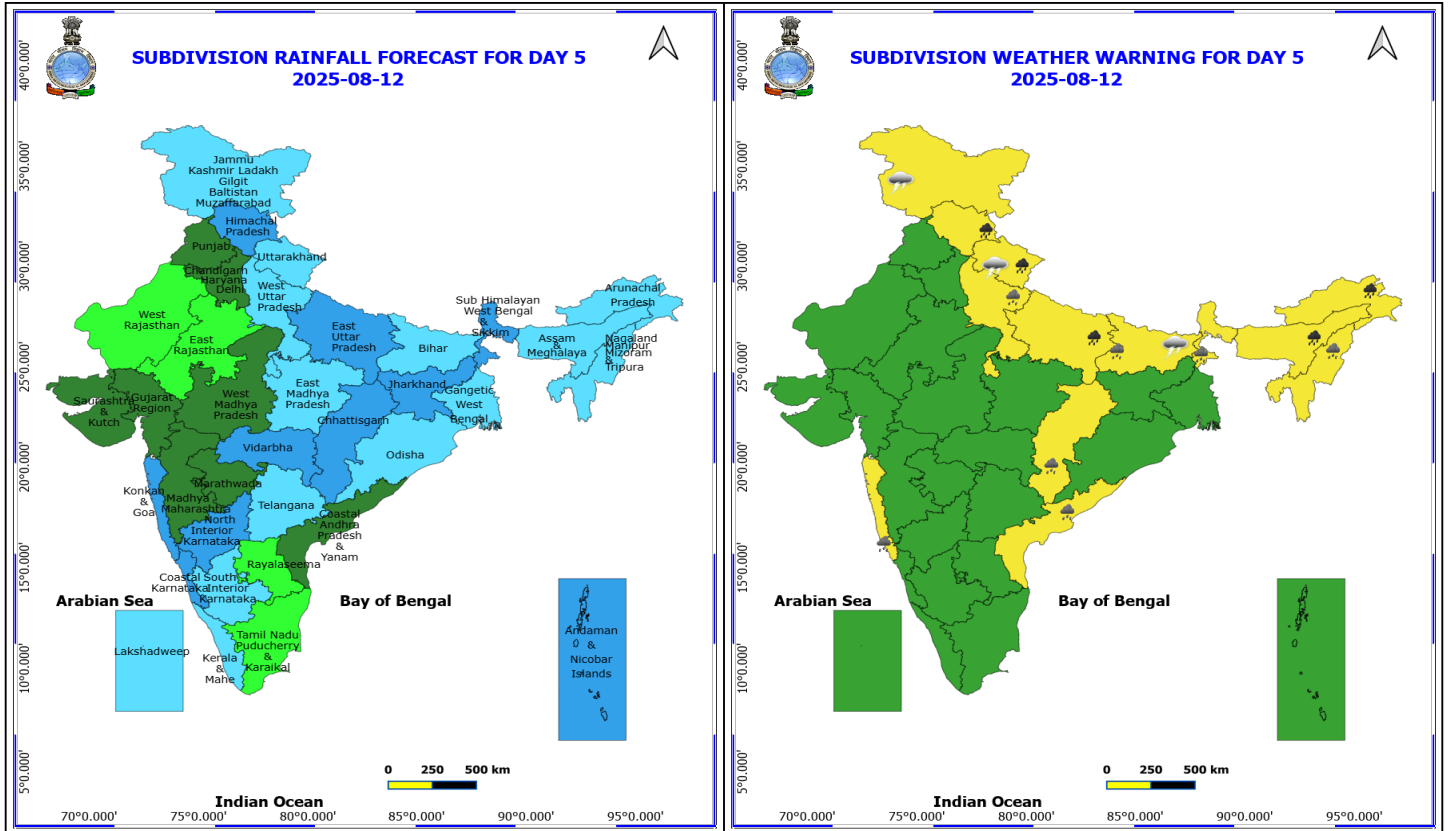
***Red color warning does not mean "Red Alert" Red color warning means "Take Action"**
 Forecast and warning for any day is valid from 0830 hours IST of day till 0830 hours IST of next day
 For more details kindly visit <https://mausam.imd.gov.in> or contact 011-2434-4599
 (Service to the nation since 1875)



11 August (Day 4)

- ❖ **Heavy to Very Heavy Rainfall** likely at isolated places over Arunachal Pradesh, Himachal Pradesh, Sub Himalayan West Bengal & Sikkim and Uttarakhand.
 - ❖ **Heavy Rainfall** likely at isolated places over Andaman & Nicobar Islands, Assam & Meghalaya, Chhattisgarh, Haryana, Chandigarh & Delhi, Nagaland, Manipur, Mizoram and Tripura and Uttar Pradesh.
 - ❖ **Thunderstorm accompanied with lightning & gusty winds(30-40kmph)** likely at isolated places over Bihar, Jammu-Kashmir-Ladakh-Gilgit-Baltistan-Muzaffarabad and Jharkhand.
 - ❖ **Thunderstorm accompanied with Lightning** likely at isolated places over Arunachal Pradesh, Assam & Meghalaya, Chhattisgarh, Coastal Andhra Pradesh, Madhya Pradesh, Nagaland, Manipur, Mizoram and Tripura, Rajasthan, Telangana, Uttarakhand and Vidarbha.
- **Squally wind with speed reaching 45 kmph to 55 kmph gusting to 65 kmph** is likely to prevail along and off Somalia & Oman coasts, some parts of southwest Arabian Sea and northwest Arabian sea.
 - **Squally weather with wind speed reaching 35 - 45 kmph gusting to 55 kmph** likely to prevail over some parts of southwest Bay of Bengal, Gulf of Mannar adjoining Comorin area.

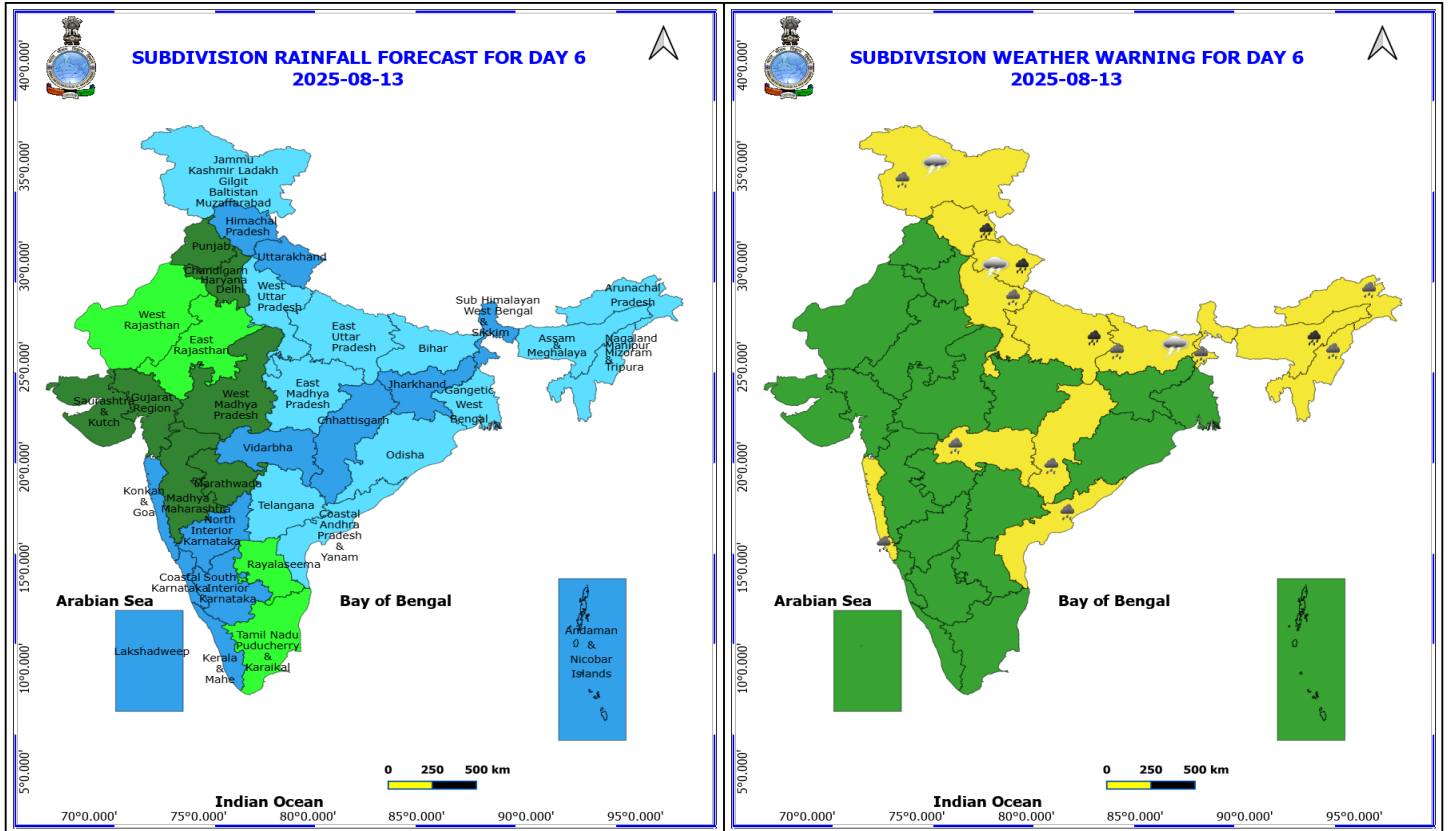
***Red color warning does not mean "Red Alert" Red color warning means "Take Action"**
 Forecast and warning for any day is valid from 0830 hours IST of day till 0830 hours IST of next day
 For more details kindly visit <https://mausam.imd.gov.in> or contact 011-2434-4599
 (Service to the nation since 1875)



12 August (Day 5)

- ❖ **Heavy to Very Heavy Rainfall** likely at isolated places over Arunachal Pradesh, Assam & Meghalaya, East Uttar Pradesh, Himachal Pradesh and Uttarakhand.
- ❖ **Heavy Rainfall** likely at isolated places over Bihar, Chhattisgarh, Coastal Andhra Pradesh, Konkan & Goa, Nagaland, Manipur, Mizoram and Tripura, Sub Himalayan West Bengal & Sikkim and West Uttar Pradesh.
- ❖ **Thunderstorm accompanied with lightning & gusty winds(30-40kmph)** likely at isolated places over Bihar and Jammu-Kashmir-Ladakh-Gilgit-Baltistan-Muzaffarabad.
- ❖ **Thunderstorm accompanied with Lightning** likely at isolated places over Uttarakhand.

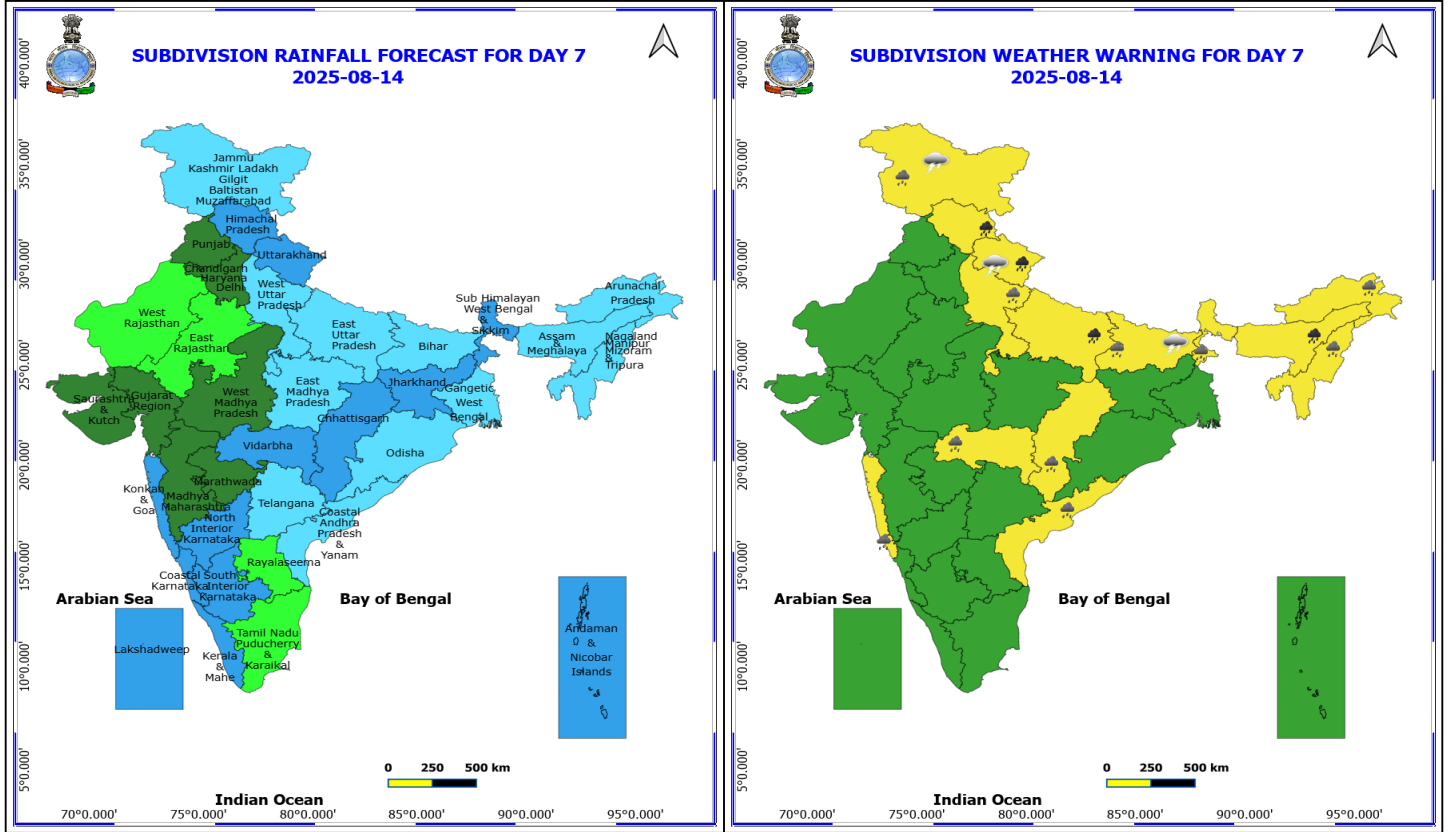
No Fishermen Warning



13 August (Day 6)

- ❖ **Heavy to Very Heavy Rainfall** likely at isolated places over Assam & Meghalaya, East Uttar Pradesh, Himachal Pradesh and Uttarakhand.
- ❖ **Heavy Rainfall** likely at isolated places over Arunachal Pradesh, Bihar, Chhattisgarh, Coastal Andhra Pradesh, Jammu-Kashmir-Ladakh-Gilgit-Baltistan-Muzaffarabad, Konkan & Goa, Nagaland, Manipur, Mizoram and Tripura, Sub Himalayan West Bengal & Sikkim, Vidarbha and West Uttar Pradesh.
- ❖ **Thunderstorm accompanied with lightning & gusty winds(30-40kmph)** likely at isolated places over Bihar and Jammu-Kashmir-Ladakh-Gilgit-Baltistan-Muzaffarabad.
- ❖ **Thunderstorm accompanied with Lightning** likely at isolated places over Uttarakhand.

No Fishermen Warning



14 August (Day 7)

- ❖ **Heavy to Very Heavy Rainfall** likely at isolated places over Arunachal Pradesh, Assam & Meghalaya, East Uttar Pradesh, Himachal Pradesh and Uttarakhand.
- ❖ **Heavy Rainfall** likely at isolated places over Bihar, Chhattisgarh, Coastal Andhra Pradesh, Konkan & Goa, Nagaland, Manipur, Mizoram and Tripura, Sub Himalayan West Bengal & Sikkim and West Uttar Pradesh.
- ❖ **Thunderstorm accompanied with lightning & gusty winds(30-40kmph)** likely at isolated places over Bihar and Jammu-Kashmir-Ladakh-Gilgit-Baltistan-Muzaffarabad.
- ❖ **Thunderstorm accompanied with Lightning** likely at isolated places over Uttarakhand.

No Fishermen Warning

***Red color warning does not mean "Red Alert" Red color warning means "Take Action"**
Forecast and warning for any day is valid from 0830 hours IST of day till 0830 hours IST of next day
For more details kindly visit <https://mausam.imd.gov.in> or contact 011-2434-4599

(Service to the nation since 1875)

Flash Flood Warnings

24 hours Outlook for the Flash Flood Risk (FFR) till 0530 IST of 09-08-2025 :

Low to Moderate flash flood risk likely over few watersheds & neighbourhoods of following Met Sub- divisions during next 24 hours.

Assam & Meghalaya – Tinsukia, Dhemaji, South Garo Hills, West Khasi Hills, East Khasi Hills, Jaintia Hills, Karimganj, Cachar and NC Hills districts.

Arunachal Pradesh–West Kameng, East Kameng, Papum-Pare, Kurung Kumey, Upper Subansiri, West Siang, East Siang, Dibang Valley, Tirap, Changlang, Anjaw and Lohit districts.

NMMT

Nagaland – Mong, Longleng, Tuensang, Wokha, Zunheboto, Kiphire, Mokochung, Phek and Kohima districts.

Manipur – Senapati, Ukhrul, Tamenglong, Chandel, Thoubal and Churachandpur districts.

Surface runoff/ Inundation may occur at some fully saturated soils & low-lying areas over Area of Concern (AoC) as shown in map due to expected rainfall occurrence in next 24 hours.

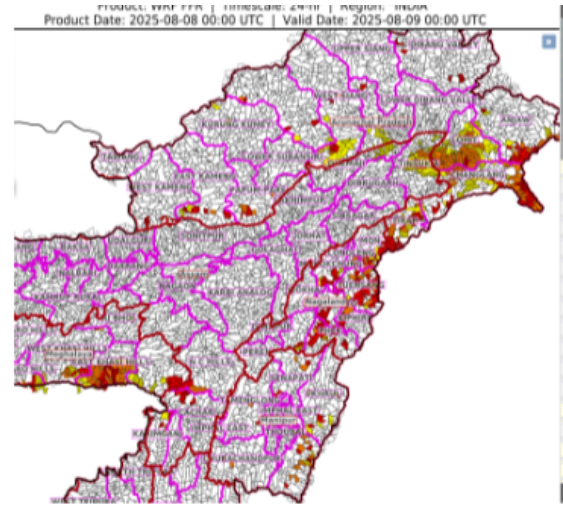




Table-1

7 Days Rainfall Forecast

S.No.	Subdivision	8- Aug	9- Aug	10- Aug	11- Aug	12- Aug	13- Aug	14- Aug
		Day 1	Day 2	Day 3	Day 4	Day 5	Day 6	Day 7
1	ANDAMAN & NICOBAR ISLANDS	FWS	FWS	FWS	WS	WS	WS	WS
2	ARUNACHAL PRADESH	WS	WS	WS	WS	FWS	FWS	FWS
3	ASSAM & MEHGHALAYA	WS	WS	WS	WS	FWS	FWS	FWS
4	N. M. M. & T.	FWS	FWS	FWS	FWS	FWS	FWS	FWS
5	S.H. WEST BENGAL & SIKKIM	WS	WS	WS	WS	WS	WS	WS
6	GANGETIC WEST BENGAL	WS	FWS	SCT	SCT	FWS	FWS	FWS
7	ODISHA	FWS	FWS	SCT	SCT	FWS	FWS	FWS
8	JHARKHAND	WS	FWS	FWS	FWS	WS	WS	WS
9	BIHAR	WS	FWS	SCT	SCT	FWS	FWS	FWS
10	EAST UTTAR PRADESH	FWS	FWS	SCT	FWS	WS	FWS	FWS
11	WEST UTTAR PRADESH	SCT	FWS	SCT	SCT	FWS	FWS	FWS
12	UTTARAKHAND	WS	WS	WS	FWS	FWS	WS	WS
13	HARYANA, CHD & DELHI	SCT	SCT	SCT	FWS	SCT	SCT	SCT
14	PUNJAB	ISOL	SCT	SCT	FWS	SCT	SCT	SCT
15	HIMACHAL PRADESH	FWS	FWS	WS	WS	WS	WS	WS
16	JAMMU AND KASHMIR AND LADAKH	SCT	SCT	SCT	SCT	FWS	FWS	FWS
17	WEST RAJASTHAN	DRY	ISOL	ISOL	ISOL	ISOL	ISOL	ISOL
18	EAST RAJASTHAN	ISOL	SCT	SCT	SCT	ISOL	ISOL	ISOL
19	WEST MADHYA PRADESH	SCT	FWS	FWS	SCT	SCT	SCT	SCT
20	EAST MADHYA PRADESH	FWS	WS	WS	WS	FWS	FWS	FWS
21	GUJRAT REGION	SCT	SCT	SCT	SCT	SCT	SCT	SCT
22	SAURASHTRA & KUTCH	SCT	SCT	SCT	SCT	SCT	SCT	SCT
23	KONKAN & GOA	WS	WS	WS	WS	WS	WS	WS
24	MADHYA MAHARASHTRA	FWS	SCT	SCT	SCT	SCT	SCT	SCT
25	MARATHWADA	FWS	SCT	SCT	ISOL	SCT	SCT	SCT
26	VIDARBHA	FWS	FWS	FWS	FWS	WS	WS	WS
27	CHATTISGARH	WS	FWS	FWS	FWS	WS	WS	WS
28	COASTAL ANDHRA PRADESH	FWS	SCT	SCT	SCT	SCT	FWS	FWS
29	TELANGANA	FWS	FWS	FWS	FWS	FWS	FWS	FWS
30	RAYALASEEMA	FWS	FWS	SCT	SCT	ISOL	ISOL	ISOL
31	TAMILNADU & PUDUCHERRY	SCT	SCT	ISOL	ISOL	ISOL	ISOL	ISOL
32	COSTAL KARNATAKA	WS	WS	WS	FWS	WS	WS	WS
33	NORTH INTERIOR KARNATAKA	WS	WS	FWS	FWS	WS	WS	WS
34	SOUTH INTERIOR KARNATAKA	WS	WS	FWS	FWS	FWS	WS	WS
35	KERALA	WS	FWS	FWS	FWS	FWS	WS	WS
36	LAKSHDWEEP	FWS	FWS	FWS	FWS	FWS	WS	WS

Legend	Category	%Stations
WS	Widespread/Most Places	76-100
FWS	Fairly Widespread/Many Places	51-75
SCT	Scattered/ A Few Places	26-50
ISOL	Isolated Places	1-25
DRY	No Rain	0

*Red color warning does not mean "Red Alert" Red color warning means "Take Action"
Forecast and warning for any day is valid from 0830 hours IST of day till 0830 hours IST of next day
For more details kindly visit <https://mausam.imd.gov.in> or contact 011-2434-4599

(Service to the nation since 1875)

Fig. 1: Maximum Temperatures Dated 2025-08-08

Fig. 2: Departure of Maximum Temp. Dated 2025-08-08

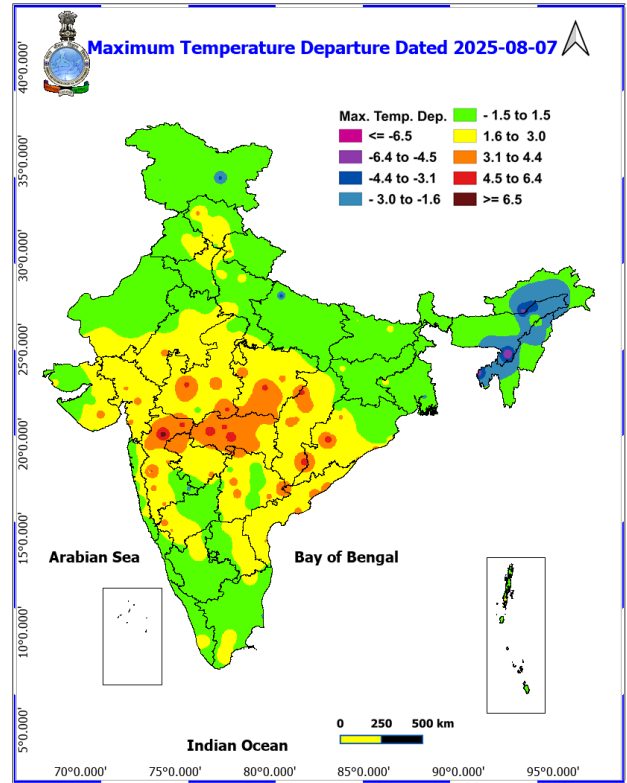
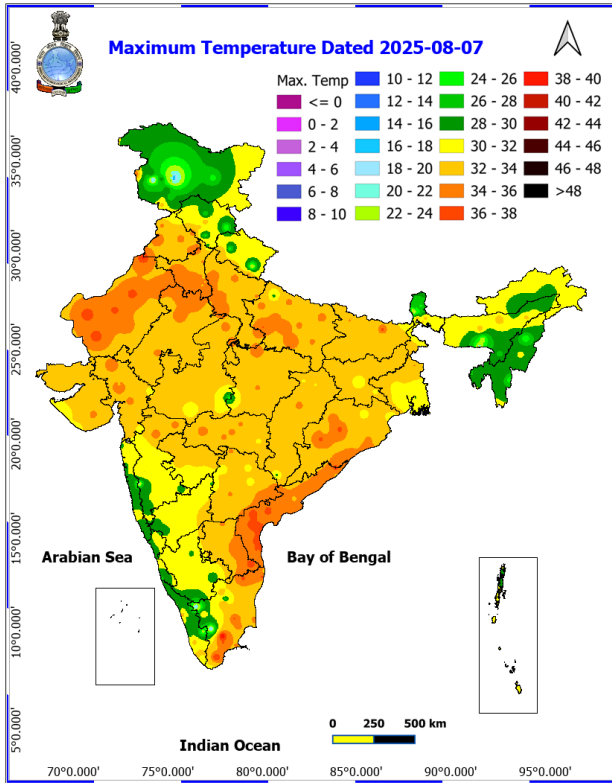
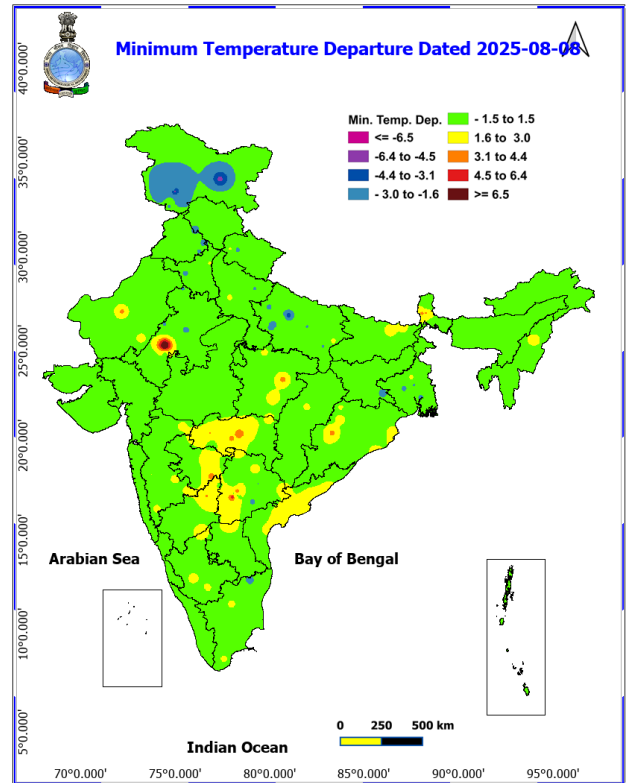
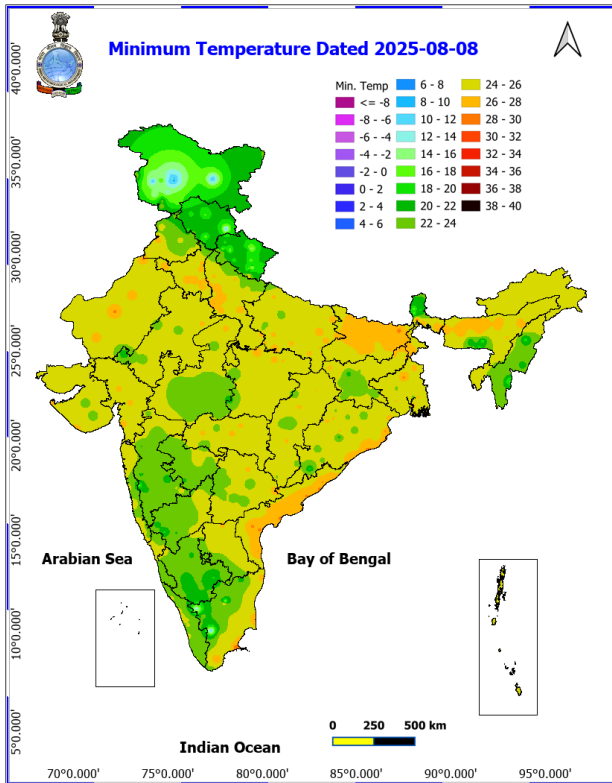


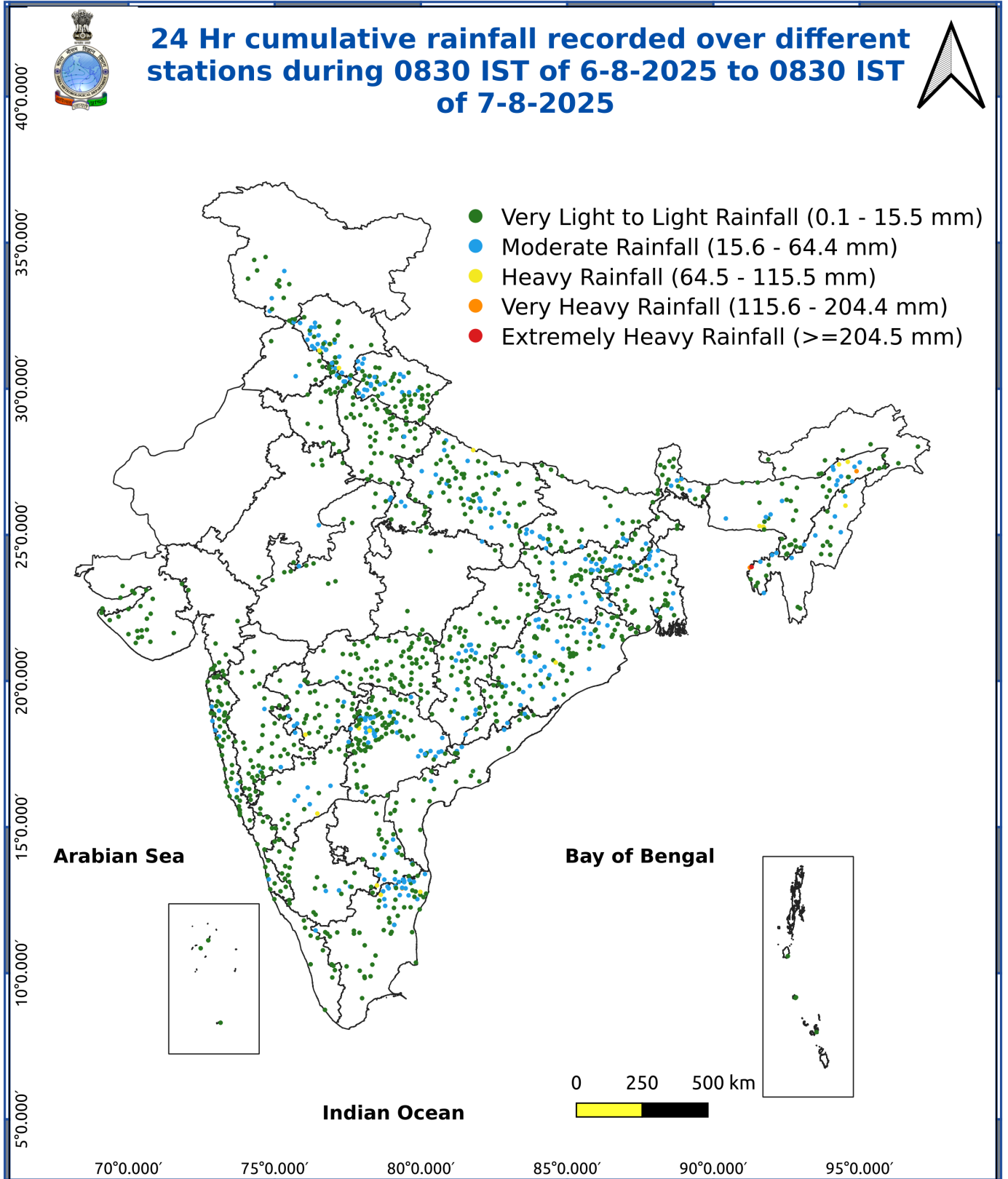
Fig. 3: Minimum Temperatures Dated 2025-08-08

Fig. 4: Departure of Minimum Temp. Dated 2025-08-08



***Red color warning does not mean "Red Alert" Red color warning means "Take Action"**
Forecast and warning for any day is valid from 0830 hours IST of day till 0830 hours IST of next day
For more details kindly visit <https://mausam.imd.gov.in> or contact 011-2434-4599

(Service to the nation since 1875)



Impact & Action Suggested due to

- **Extremely heavy rainfall (≥ 21 cm)** very likely at isolated places over Arunachal Pradesh on 08th August.
- Isolated **very heavy rainfall over** Arunachal Pradesh during 08th-12th; Assam & Meghalaya on 08th, 12th & 13th; Nagaland, Manipur, Mizoram & Tripura on 08th August. Himachal Pradesh, Uttarakhand during 10th-13th and East Uttar Pradesh on 12th & 13th; Tamil Nadu, Bihar on 08th; Sub-Himalayan West Bengal & Sikkim on 11th August.

Impact Expected

- Localized Flooding of roads, water logging in low lying areas and closure of underpasses mainly in urban areas of the above region.
- Occasional reduction in visibility due to heavy rainfall.
- Disruption of traffic in major cities due to water logging in roads leading to increased travel time.
- Minor damage to kutcha roads.
- Possibilities of damage to vulnerable structure.
- Localized Landslides/Mudslides/landslips/mudslips/landsinks/mudsinks.
- Damage to horticulture and standing crops in some areas due to inundation.
- It may lead to riverine flooding in some river catchments (for riverine flooding please visit Web page of CWC)

Action Suggested

- Check for traffic congestion on your route before leaving for your destination.
- Follow any traffic advisories that are issued in this regard.
- Avoid going to areas that face the water logging problems often.
- Avoid staying in vulnerable structure.

Agromet advisories for various parts of the country

Agromet advisories for likely impact of Heavy / Heavy to Very Heavy / Extremely Heavy Rainfall

- In **Uttarakhand**, postpone sowing of black gram, green gram and soybean till cessation of heavy rains and drain out excess water from already sown / transplanted fields of rice, sugarcane, maize, black gram, green gram, groundnut, pigeon pea, finger millet, soybean and vegetables to avoid waterlogging in **Bhabar and Tarai Zone**. In **Sub Humid Sub Tropic Zone**, avoid transplanting of rice till receding of excess water from the fields. If there is damage to rice seedlings in transplanted rice fields, undertake late or staggered planting with old seedlings. If the rice crop is totally damaged, carry out direct seeding using short-duration varieties under optimum soil moisture conditions. Drain out excess water from fields of rice, green gram, black gram, barnyard millet and finger millet. In **Hill Zone**, strengthen the bunds to prevent surface runoff of water. Postpone sowing of vegetable pea in case of excessive wet soil conditions. Maintain proper drainage channels in the crop fields.
- In **Himachal Pradesh**, cover the cauliflower nursery with plastic sheets to prevent damage from heavy rainfall in **High Hills Sub Temperate Wet Zone**. Make proper drainage channels in maize, ginger and vegetable fields in **Mid Hills Sub Humid Zone**; rice, maize, pulses and vegetable fields in **Sub Montane and Low Hills Sub Tropical Zone** and kidney beans, finger millet, cucurbits and vegetables in **High Hills Sub Temperate Wet Zone**.
- In **Uttar Pradesh**, postpone sowing of pigeon pea and provide proper drainage in fields of rice, maize, black gram, green gram and vegetables in **Western Plain Zone**. In **Central Plain Zone**, drain out excess water from fields of rice, maize, groundnut, sesame, black gram, green gram and vegetables.
- In **Arunachal Pradesh**, postpone all fresh sowing and transplanting operations till cessation of heavy rains. Harvest nearly mature banana bunches and keep them in a dry and safe place for ripening. Ensure proper drainage in rice, maize, finger millet, soybean and vegetables and fruit orchards to avoid waterlogging. In rice fields, strengthen bunds to prevent field erosion and seedling washout. Provide strong support to fruit-bearing plants to prevent them from bending or breaking during heavy rains.
- In **Assam**, to prevent waterlogging, ensure proper drainage in *Sali* rice, green gram and pigeon pea fields and

*Red color warning does not mean "Red Alert" Red color warning means "Take Action"

Forecast and warning for any day is valid from 0830 hours IST of day till 0830 hours IST of next day

For more details kindly visit <https://mausam.imd.gov.in> or contact 011-2434-4599

(Service to the nation since 1875)

banana orchards in **Lower Brahmaputra Valley Zone**; *Sali* rice and sugarcane fields in **North Bank Plain Zone**; *Sali* rice fields in **Upper Brahmaputra Valley Zone** and **Barak Valley Zone** and rice and sesame fields in **Hill Zone**. In **Barak Valley Zone**, postpone sowing of cauliflower.

- In **Meghalaya**, ensure proper drainage in rice, maize, turmeric, chilli, okra and bitter gourd fields to prevent waterlogging. Provide staking / support to tall and fragile crops like banana, papaya, bottle gourd etc. to prevent lodging.
- In **Nagaland**, provide proper drainage channels in maize fields to manage surface water runoff. Clean the drainage channels in rice fields to drain out excess water.
- In **Tripura**, maintain proper drainage in rice, chilli and ginger fields.
- In **Sub-Himalayan West Bengal**, make provision to drain out excess water from rice, ginger, vegetable fields and fruit orchards in **Hill Zone** and *aman* paddy and vegetable fields in **Terai Zone**. Cover the chilli seedlings with plastic to protect them from heavy rains in **Terai Zone**.
- In **Bihar**, make provisions to drain out excess water from standing crops such as maize, nurseries of onion, chilli, and cauliflower in **North West Alluvial Plain Zone** and maize, finger millet, ragi, kodo, sava, china etc. in **North East Alluvial Zone**.
- In **Kerala**, provide adequate drainage in fields of rice, coconut, banana and ginger. Provide support to banana plantations. Make the vegetable pandals stronger.
- In **Tamil Nadu**, ensure proper drainage in the fields of sorghum to prevent waterlogging, especially in heavy soils and low-lying areas. Ensure proper drainage around the coconut plants to avoid root rot.
- In **Karnataka**, provide adequate drainage facilities in arecanut and banana plantations in **Coastal Zone**. In **Southern Transition Zone**, avoid paddy transplanting till cessation of heavy rains and ensure proper drainage in ginger, maize, finger millet and transplanted rice fields and arecanut and coconut plantations. In **Southern Dry Zone**, clear and maintain drainage channels especially in paddy, sugarcane, and vegetable fields. Provide support to tall crops like banana, maize and sunflower to prevent breakage or lodging.

Livestock / Fishery

- Keep the animals inside the shed during heavy rainfall and provide them balanced feed.
- Store feed and fodder in a safe place to prevent spoilage.
- Construct an outlet with proper netting around the ponds to drain out excess water, thereby preventing fish from escaping in case of overflow.

Agromet advisories for likely impact of Thunderstorm / Gusty Winds / Squally Winds

- Provide mechanical support to horticultural crops and staking or support to vegetables and young fruit plants / fruit-bearing plants to avoid lodging due to strong winds.

Legends & abbreviations:

Region wise classification of meteorological Sub-Divisions:

- **Northwest India:** Western Himalayan Region (Jammu-Kashmir-Ladakh-Gilgit-Baltistan-Muzaffarabad, Himachal Pradesh and Uttarakhand); Punjab, Haryana-Chandigarh-Delhi; West Uttar Pradesh, East Uttar Pradesh, West Rajasthan and East Rajasthan.
- **Central India:** West Madhya Pradesh, East Madhya Pradesh, Vidarbha and Chhattisgarh.
- **East India:** Bihar, Jharkhand, Sub-Himalayan West Bengal & Sikkim; Gangetic West Bengal, Odisha and Andaman & Nicobar Islands.
- **Northeast India:** Arunachal Pradesh, Assam & Meghalaya and Nagaland, Manipur, Mizoram & Tripura.
- **West India:** Gujarat Region, Saurashtra & Kutch, Konkan & Goa, Madhya Maharashtra and Marathawada.
- **South India:** Coastal Andhra Pradesh & Yanam, Telangana, Rayalaseema, Coastal Karnataka, North Interior Karnataka, South Interior Karnataka, Kerala & Mahe, Tamil Nadu, Puducherry & Karaikal and Lakshadweep.

LEGENDS

- 1 अंडमान और निकोबार द्वीप समुह
- 2 अरुणाचल प्रदेश
- 3 असम और मेघालय
- 4 नागालैंड मनीपुर मीजोरम और त्रिपुरा
- 5 उप हिमालय पश्चिम बंगाल एवं सिक्किम
- 6 पश्चिम बंगाल
- 7 ओडिसा
- 8 झारखंड
- 9 बिहार
- 10 पूर्वी उत्तर प्रदेश
- 11 पश्चिम उत्तर प्रदेश
- 12 उत्तराखंड
- 13 हरियाणा चंडिगढ़ एवं दिल्ली
- 14 पंजाब
- 15 हिमाचल प्रदेश
- 16 जम्मू एवं कश्मीर एवं लद्दाख
- 17 पश्चिम राजस्थान
- 18 पूर्वी राजस्थान
- 19 पश्चिम मध्य प्रदेश
- 20 पूर्वी मध्य प्रदेश
- 21 गुजरात क्षेत्र
- 22 सौराष्ट्र एवं कच्छ
- 23 कोंकण एवं गोवा
- 24 मध्य महाराष्ट्र
- 25 मराठावाडा
- 26 विदर्भ
- 27 छत्तीसगढ़
- 28 तटीय आंध्र प्रदेश एवं यनम
- 29 तेलंगाना
- 30 रायलसीमा
- 31 तमिलनाडु, पुदुचेरी एवं कराईकल
- 32 तटिय कर्नाटक
- 33 आंतरिक उत्तरी कर्नाटक
- 34 आंतरिक दक्षिणी कर्नाटक
- 35 केरल एवं माहे
- 36 लक्षद्वीप



1. Andaman & Nicobar Islands
2. Arunachal Pradesh
3. Assam & Meghalaya
4. Nagaland, Manipur, Mizoram & Tripura
5. Sub-Himalayan West Bengal & Sikkim
6. Gangetic West Bengal
7. Orissa
8. Jharkhand
9. Bihar
10. East Uttar Pradesh
11. West Uttar Pradesh
12. Uttarakhand
13. Haryana, Chd & Delhi
14. Punjab
15. Himachal Pradesh
16. Jammu & Kashmir and Ladakh
17. West Rajasthan
18. East Rajasthan
19. West Madhya Pradesh
20. East Madhya Pradesh
21. Gujarat
22. Saurashtra
23. Konkan & Goa
24. Madhya Maharashtra
25. Marathawada
26. Vidharbha
27. Chhattisgarh
28. Coastal Andhra Pradesh & Yanam
29. Telangana
30. Rayalaseema
31. Tamilnadu, Puducherry & Karaikal
32. Coastal Karnataka
33. North Interior Karnataka
34. South Interior Karnataka
35. Kerala & Mahe
36. Lakshadweep

SPATIAL DISTRIBUTION (% of Stations reporting)

% Stations	Category	% Stations	Category
76-100	Widespread (WS/ Most Places)	26-50	Scattered (SCT/ A Few Places)
51-75	Fairly Widespread (FWS/ Many Places)	1-25	Isolated (ISOL)

Subdivision Colour

- NO WARNING
- WATCH (BE UPDATED)
- ALERT (BE PREPARED TO TAKE ACTION)
- WARNING (TAKE ACTION)

Probabilistic Forecast

Terms	Probability of Occurrence (%)
Unlikely	< 25
Likely	25 - 50
Very Likely	50 - 75
Most Likely	> 75

- | | | | |
|--------------------------|-----------------|----------------------|--------------------|
| Heavy Rain | Very Heavy Rain | Extremely Heavy Rain | Heavy Snow |
| Thunderstorm & Lightning | Hailstorm | Dust Storm | Dust Raising Winds |
| Strong surface winds | Heat Wave | Hot Day | Warm Night |
| Cold Wave | Cold Day | Ground Frost | Fog |
| Hot & Humid | | | |

*Red color warning does not mean "Red Alert" Red color warning means "Take Action"

Forecast and warning for any day is valid from 0830 hours IST of day till 0830 hours IST of next day

For more details kindly visit <https://mausam.imd.gov.in> or contact 011-2434-4599

(Service to the nation since 1875)

LEGENDS

WARNING

WARNING (TAKE ACTION)
ALERT (BE PREPARED)
WATCH (BE UPDATED)
NO WARNING (NO ACTION)

Probabilistic Forecast

Terms	Probability of Occurrence (%)
Unlikely	< 25
Likely	25 - 50
Very Likely	50 - 75
Most Likely	> 75



Heavy: 64.5 to 115.5 mm/cm *
Very Heavy: 115.6 to 204.4 mm/cm*
Extremely Heavy: > 204.4 mm/cm *



When maximum temperature of a station reaches $\geq 40^{\circ}\text{C}$ for plains and $\geq 30^{\circ}\text{C}$ for hilly regions
(a) Based on Departure from normal

Heat Wave: Maximum Temperature Departure from normal 4.5°C to 6.4°C .
Severe Heat Wave: Maximum Temperature Departure from normal $\geq 6.5^{\circ}\text{C}$

(b). Based on Actual maximum temperature

Heat Wave: When actual maximum temperature $\geq 45^{\circ}\text{C}$.
Severe Heat Wave: When actual maximum temperature $\geq 47^{\circ}\text{C}$

(c). Criteria for heat wave for coastal stations

When maximum temperature departure is $> 4.5^{\circ}\text{C}$ from normal. Heat Wave may be described provided maximum temperature $\geq 37^{\circ}\text{C}$



When maximum temperature remains 40°C

Warm Night: When minimum temperature departure 4.5°C to 6.4°C .
Severe Warm Night: When minimum temperature departure $> 6.4^{\circ}\text{C}$.



When minimum temperature of a station $\leq 10^{\circ}\text{C}$ for plains and $\leq 0^{\circ}\text{C}$ for hilly regions.

(a). Based on departure

Cold Wave: Minimum Temperature Departure from normal -4.5°C to -6.4°C .
Severe Cold Wave: Minimum Temperature Departure from normal $\leq -6.5^{\circ}\text{C}$

(b) Based on actual Minimum Temperature (for Plains only)

Cold Wave : When Minimum Temperature is $\leq 4.0^{\circ}\text{C}$
Severe Cold Wave: When Minimum Temperature is $\leq 2.0^{\circ}\text{C}$

(c) For Coastal Stations

When Minimum Temperature departure is $\leq -4.5^{\circ}\text{C}$ & actual Minimum Temperature is $\leq 15^{\circ}\text{C}$



When minimum temperature of a station $\leq 10^{\circ}\text{C}$ for plains and $\leq 0^{\circ}\text{C}$ for hilly regions
Based on departure

Cold Day: Maximum Temperature Departure from normal -4.5°C to -6.4°C .
Severe Cold Day: Maximum Temperature Departure from normal $\leq -6.5^{\circ}\text{C}$



Phenomenon of small droplets suspended in air and the horizontal visibility $< 1\text{km}$

Moderate Fog: When the visibility between 500-200 metres
Dense Fog: when the visibility between 50- 200 metres
Very Dense Fog: when the visibility < 50 metres



Sudden electrical discharges manifested by a flash of light (Lightning) and a sharp rumbling sound (thunder)



An ensemble of particles of dust or sand energetically lifted to great heights by a strong and turbulent wind.



Ice deposits on ground

Air temperature $\leq 4^{\circ}\text{C}$ (over Plains)



A strong wind that rises suddenly, lasts for atleast 1 minute.

Moderate: Wind speed 52-61 kmph
Severe: Wind speed 62-87 kmph
Very Severe: Wind speed > 87 kmph



Effect of various waves in the sea over specific area

Rough to very rough: Wind speed 41-62 kmph (22-33 knots) & Wave height 2.5-6 metre
High to very high: Wind speed 63-117 kmph (34-63 knots) & Wave height 6-14 metre
Phenomenal: Wind speed > 117 kmph (> 63 knots) & Wave height > 14 metre



Cyclonic Storm: Wind speed 62-87 kmph (34-47 knots)
Severe Cyclonic Storm: Wind speed 88-117 kmph (48-63 knots)
Very Severe Cyclonic Storm: Wind speed 118-165 kmph (64 - 89 knots)
Extremely Severe Cyclonic Storm: Wind speed 166-220 kmph (90 -119 knots)
Super Cyclone Storm: Wind speed > 220 kmph (> 119 knots)

*Red color warning does not mean "Red Alert" Red color warning means "Take Action"

Forecast and warning for any day is valid from 0830 hours IST of day till 0830 hours IST of next day

For more details kindly visit <https://mausam.imd.gov.in> or contact 011-2434-4599

(Service to the nation since 1875)