



Tuesday, August 22, 2023
Time of Issue: 1330 hours IST
(MID-DAY)

ALL INDIA WEATHER SUMMARY AND FORECAST BULLETIN

Significant Weather Features

Significant Weather features:

- ❖ A cyclonic circulation lies over central Madhya Pradesh & neighbourhood in middle tropospheric levels.
- ❖ Monsoon Trough lies to the north of its normal position. It is likely to remain north of its normal position during next 7 days.
- ❖ The Western Disturbance as a trough in middle tropospheric westerlies runs roughly along Long. 60°E to the north of Lat. 30°N.

Weather Forecast and Warnings:

Northwest India: Light/moderate fairly widespread to widespread rainfall/thunderstorm & lightning with isolated **heavy rainfall** likely over Himachal Pradesh during 22nd-25th; over Uttarakhand and Uttar Pradesh during 22nd-25th and over northern Punjab & Haryana-Chandigarh on 22nd August, 2023.

Isolated very heavy rainfall also likely over north Uttar Pradesh, Himachal Pradesh & Uttarakhand during 22nd-24th August, 2023.

Isolated extremely heavy rainfall also likely over Uttarakhand on 23rd & 24th August, 2023.

Central India: Light/moderate fairly widespread to widespread rainfall with isolated thunderstorm & lightning very likely over the region during next 3 days.

East India: Light/moderate fairly widespread to widespread rainfall/thunderstorm & lightning with **isolated heavy rainfall** activity very likely over Sub-Himalayan West Bengal & Sikkim during next 5 days; Gangetic West Bengal during 23rd-25th; Odisha during 22nd-25th & Jharkhand during 23rd -24th and over Bihar during 22nd- 26th August, 2023.

Isolated very heavy rainfall also likely over Sub-Himalayan West Bengal & Sikkim on 24th & 25th; over Bihar during 22nd & 25th August.

Isolated extremely heavy rainfall also likely over Sub-Himalayan West Bengal-Sikkim on 22nd & 23rd and over Bihar on 23rd & 24th August, 2023.

Northeast India: Light/moderate fairly widespread to widespread rainfall/thunderstorm & lightning with isolated **heavy rainfall** activity very likely over the region during next 5 days.

Isolated very heavy rainfall also likely over Assam & Meghalaya and Arunachal Pradesh during 22nd-26th August, 2023.

South India: Light/moderate scattered to fairly widespread rainfall/thunderstorm & lightning with isolated **heavy rainfall** activity very likely over north Tamil Nadu on 22nd August, 2023.

No significant weather over rest parts of the country during next 5 days.

Main Weather Observations:

- ❖ **Rainfall/thundershowers observed** (from 0830 hours IST of yesterday to 0830 hours IST of today): **at most places** over Andaman & Nicobar Islands, Sub-Himalaya West Bengal & Sikkim, Konkan & Goa, Arunachal Pradesh, Assam & Meghalaya; **at many places** over Bihar, Uttarakhand, Nagaland, Manipur, Mizoram & Tripura; **at a few places** over East Rajasthan, Odisha, Himachal Pradesh, Madhya Pradesh, Gujarat Region, Vidarbha, Coastal Andhra Pradesh & Yanam, Lakshadweep and **at isolated places** over Gangetic West Bengal, Jharkhand, Haryana-Chandigarh-Delhi, Punjab, Jammu-Kashmir-Ladakh-Gilgit-Baltistan-Muzaffarabad, West Rajasthan, Saurashtra & Kutch, Madhya Maharashtra, Marathwada, Chhattisgarh, Telangana, Tamil Nadu, Puducherry & Karaikal, Karnataka, Kerala & Mahe.
- ❖ **Heavy to very heavy rainfall** at isolated places over Jharkhand, Jammu-Kashmir-Ladakh-Gilgit-Baltistan-Muzaffarabad, Uttar Pradesh, Bihar, East Madhya Pradesh, Assam & Meghalaya and **heavy rainfall** at isolated places over Himachal Pradesh, Punjab, Uttarakhand, East Rajasthan, Odisha, Coastal Andhra Pradesh & Yanam, Arunachal Pradesh, Nagaland, Manipur, Mizoram & Tripura.
- ❖ **Significant rainfall recorded** (from 0830 hours IST of yesterday to 0830 hours IST of today): **(in cm): Jharkhand:** Majhgaon-20, Noamundi-19, Kumardungi-17, Tantnagar-12, Hatgamharia-10; **Jammu-Kashmir-Ladakh:** Katra (dist Reasi) 17, Reasi Kvk Aws (dist Reasi) 14, Reasi Arg (dist Reasi) 14, Kathua (dist Kathua) 12, Kathua_kvk (dist Kathua) 11, Kawa Aws (dist Udhampur) 3; **East Uttar Pradesh:** Gaighat (Bla Fmo) (dist Ballia) 17, Katerniaghat (dist Bahraich) 13, Birdghat (dist Gorakhpur) 7, Sardanagar (dist Kheri) 7, Bansgaon (dist Gorakhpur) 5; **Bihar:** Patahi (dist East Champaran) 15, Forbesganj (dist Araria) 14, Saraiya (dist Muzaffarpur) 13, Jalalgarh (dist Purnea) 11, Amaur (dist Purnea) 10, Banmankhi (dist Purnea) 9, Madhipura (dist Madhepura) 9, Singheshwar (dist Madhepura) 7, Chakia (dist East Champaran) 7, Kumarkhand (dist Madhepura) 7; **Assam & Meghalaya:** Chauldhowaghat (dist Lakhimpur) 15, Sivasagar (dist Sibsagar) 10, Ranganadi Nt Xing (dist Lakhimpur) 9, N.lakhimpur/lilabari (dist Lakhimpur) 9, Neamatighat (dist Jorhat) 8, B P Ghat (dist Karimganj) 8, Tamulpur (dist Baksa) 8, Barpeta/sarbhog_aws (dist Barpeta) 8, Jorhat (dist Jorhat) 7, Dhemaji (dist Dhemaji) 7, Jorhat_aws (dist Jorhat) 7, Hazuah (dist Barpeta) 7; **West Uttar Pradesh:** Baheri (dist Bareilly) 12, Saharanpur (dist Saharanpur) 9, Gunnaur (dist Sambhal) 8, Narora (dist Bulandshahar) 8, Sambhal (dist Sambhal) 6; **East Madhya Pradesh:** Shahpura (dist Dindori) 12, Hatta (dist Damoh) 7, Mehadwani (dist Dindori) 7; **Himachal Pradesh:** Sujampur Tira (dist Hamirpur) 10, Nagrota Surian (dist Kangra) 8, Guler (dist Kangra) 6; **Punjab:** Malikpur (dist Pathankot) 10, Pathankot Arg (dist Pathankot) 8, Madhopur (dist Pathankot) 6; **Uttarakhand:** Rishikesh 9, Dehradun, Kashipur and Jollygrant 8 each, Kotdwara 7; **East Rajasthan:** Mandal Sr (dist Bhilwara) 9, Arai Sr (dist Ajmer) 7; **Odisha:** Kashinagar (dist Gajapati) 9, Kantapada (dist Cuttack) 8, Alipingal (dist Jagatsinghpur) 8, Nawapara (dist Nawapara) 7; **Coastal Andhra Pradesh & Yanam:** Salur (dist Parvathipuram Manyam) 9, Jiyamma Valasa (dist Parvathipuram Manyam) 7; **Arunachal Pradesh:** Basar (dist West Siang) 7, Itanagar (dist Papumpara) 7, Roing (dist Lower Dibang Valley) 6; **Nagaland, Manipur, Mizoram & Tripura:** Lengpui (dist Aizawl) 7, Mamit Agri (dist Mamit) 6.
- ❖ **Thunderstorm observed recorded** (from 0830 hours IST of yesterday to 0830 hours IST of today): at isolated places over Jammu-Kashmir-Ladakh-Gilgit-Baltistan-Muzaffarabad, Uttarakhand, Bihar Assam & Meghalaya, Punjab, East Uttar Pradesh, East Rajasthan, Odisha and Coastal Andhra Pradesh & Yanam.
- ❖ **Minimum Temperature Departures (as on 22-08-2023):** Minimum temperatures are **appreciably above normal (3.1°C to 5.0°C)** at most places over Himachal Pradesh; at a few places over Jammu-Kashmir-Ladakh-Gilgit-Baltistan-Muzaffarabad; **above normal (1.6°C to 3.0°C)** at most places over Punjab, Haryana-Chandigarh-Delhi, Kerala & Mahe; at many places over Jharkhand, Chhattisgarh; at a few places over East Madhya Pradesh, Gangetic West Bengal, Odisha, Rayalaseema, Telangana, Tamil Nadu, Puducherry & Karaikal; at isolated places over West Rajasthan, West Madhya Pradesh, Coastal Andhra Pradesh & Yanam. They are **below normal (-1.6°C to -3.0°C)** at isolated places over Assam & Meghalaya and Bihar and **near normal** over rest parts of the country. Today, **the lowest minimum temperature of 20.0°C** is reported at **Khandwa (West Madhya Pradesh)** over the plains of the country.
- ❖ **Maximum Temperature Departures (as on 21-08-2023):** Maximum temperatures were **appreciably above normal (3.1°C to 5.0°C)** at many places over Tamil Nadu, Puducherry & Karaikal; at a few places over Punjab, Coastal Andhra Pradesh & Yanam and Kerala & Mahe; at a isolated places over Rajasthan, East Madhya Pradesh, East Uttar Pradesh, Odisha and Jammu-Kashmir-Ladakh-Gilgit-Baltistan-Muzaffarabad; **above normal (1.6°C to 3.0°C)** at most places over North and south Interior Karnataka; at many places over Haryana-Chandigarh-Delhi, Gangetic West Bengal, Jharkhand, Telangana, Rayalaseema and Madhya Maharashtra; at a few places over Himachal Pradesh, West Uttar Pradesh, Bihar, Andaman & Nicobar Islands and Chhattisgarh and at isolated places over West Madhya Pradesh and Konkan & Goa. They were **appreciably below normal (-3.1°C to -5.0°C)** at a few places over Assam & Meghalaya and Gujarat Region; at isolated places over West Madhya Pradesh and **near normal** over rest parts of the country. Yesterday, **the highest maximum temperature of 40.5°C** was reported at **Churu (West Rajasthan)**.

* Red color warning does not mean "Red Alert" Red color warning means "Take Action".

Forecast and Warning for any day is valid from 0830 hours IST of day till 0830 hours IST of next day For more details kindly visit <https://mausam.imd.gov.in> or contact : 011-2434-4599

(Service to the Nation since 1875)



Meteorological Analysis (Based on 0830 hours IST)

- ❖ The **Monsoon Trough** at mean sea level now passes through Amritsar, Karnal, Meerut, Lucknow, Gaya, Malda and thence eastwards to Nagaland across Assam.
- ❖ The **Western Disturbance** as a trough in middle tropospheric westerlies with its axis at 5.8 km above mean sea level now runs roughly along Long. 60°E to the north of Lat. 30°N.
- ❖ The cyclonic circulation over northwest Madhya Pradesh & neighbourhood now lies over central parts of Madhya Pradesh between 3.1 & 4.5 km above mean sea level.
- ❖ A north-south trough runs from South Interior Karnataka to Comorin area across interior Tamil Nadu at 0.9 km above mean sea level.
- ❖ A cyclonic circulation lies over north Tamil Nadu & adjoining Rayalaseema at 1.5 km above mean sea level.

Weather Forecast for next 5 days (Upto 0830 hours IST of 27th August, 2023)

- ❖ Meteorological sub-division wise detailed 5 days rainfall forecast is given in Table-1.
- ❖ No significant change in maximum temperatures likely over most parts of country during next 5 days.

Weather Outlook for subsequent 2 days

- ❖ Fairly widespread to widespread light/moderate rainfall likely over along the foothills of the Himalayas, parts of east & northeast India, along the west coasts and islands.
- ❖ Scattered to fairly widespread light/moderate rainfall likely over Central India.
- ❖ Subdued rainfall activity with isolated to scattered rainfall likely over rest parts of the country.



Table-1

7 Days Rainfall Forecast

S. No.	Subdivision	22-Aug	23-Aug	24-Aug	25-Aug	26-Aug	27-Aug	28-Aug
		Day 1	Day 2	Day 3	Day 4	Day 5	Day 6	Day 7
1	ANDAMAN & NICOBAR ISLANDS	WS	FWS	FWS	FWS	FWS	FWS	FWS
2	ARUNACHAL PRADESH	WS	WS	WS	WS	WS	FWS	FWS
3	ASSAM & MEGHALAYA	WS	WS	WS	WS	WS	FWS	FWS
4	NAGALAND, MANIPUR, MIZORAM & TRIPURA	WS	FWS	FWS	FWS	FWS	WS	WS
5	SUB-HIMALAYAN WEST BENGAL & SIKKIM	WS	WS	WS	WS	WS	FWS	FWS
6	GANGETIC WEST BENGAL	SCT	WS	WS	FWS	FWS	FWS	FWS
7	ODISHA	SCT	FWS	FWS	FWS	FWS	SCT	SCT
8	JHARKHAND	SCT	WS	WS	FWS	SCT	SCT	SCT
9	BIHAR	FWS	WS	WS	WS	FWS	FWS	FWS
10	EAST UTTAR PRADESH	WS	WS	WS	SCT	SCT	SCT	SCT
11	WEST UTTAR PRADESH	WS	FWS	SCT	ISOL	ISOL	ISOL	ISOL
12	UTTARAKHAND	WS	WS	WS	WS	FWS	SCT	SCT
13	HARYANA CHANDIGARH & DELHI	SCT	ISOL	ISOL	ISOL	ISOL	ISOL	ISOL
14	PUNJAB	ISOL	ISOL	ISOL	ISOL	ISOL	ISOL	ISOL
15	HIMACHAL PRADESH	FWS	FWS	FWS	FWS	FWS	SCT	SCT
16	JAMMU & KASHMIR AND LADAKH	ISOL	SCT	SCT	SCT	ISOL	ISOL	ISOL
17	WEST RAJASTHAN	ISOL	ISOL	DRY	DRY	DRY	DRY	DRY
18	EAST RAJASTHAN	FWS	SCT	ISOL	ISOL	DRY	DRY	DRY
19	WEST MADHYA PRADESH	FWS	SCT	SCT	ISOL	ISOL	ISOL	ISOL
20	EAST MADHYA PRADESH	FWS	SCT	SCT	SCT	ISOL	ISOL	ISOL
21	GUJARAT REGION	ISOL	ISOL	ISOL	ISOL	ISOL	ISOL	ISOL
22	SAURASHTRA & KUTCH	ISOL	ISOL	ISOL	ISOL	ISOL	DRY	DRY
23	KONKAN & GOA	WS	WS	WS	WS	WS	WS	WS
24	MADHYA MAHARASHTRA	ISOL	ISOL	SCT	SCT	SCT	SCT	SCT
25	MARATHAWADA	ISOL	ISOL	ISOL	ISOL	ISOL	ISOL	ISOL
26	VIDARBHA	FWS	SCT	SCT	SCT	ISOL	ISOL	ISOL
27	CHHATTISGARH	SCT	SCT	ISOL	ISOL	ISOL	ISOL	ISOL
28	COASTAL ANDHRA PRADESH & YANAM	SCT	SCT	SCT	SCT	SCT	SCT	SCT
29	TELANGANA	SCT	ISOL	ISOL	ISOL	ISOL	ISOL	ISOL
30	RAYALASEEMA	ISOL	ISOL	ISOL	ISOL	ISOL	ISOL	ISOL
31	TAMILNADU PUDUCHERRY & KARAIKAL	FWS	SCT	ISOL	ISOL	ISOL	ISOL	ISOL
32	COASTAL KARNATAKA	SCT	SCT	SCT	SCT	SCT	SCT	SCT
33	NORTH INTERIOR KARNATAKA	ISOL	ISOL	ISOL	ISOL	ISOL	ISOL	ISOL
34	SOUTH INTERIOR KARNATAKA	SCT	ISOL	ISOL	ISOL	ISOL	ISOL	ISOL
35	KERALA & MAHE	ISOL	ISOL	ISOL	ISOL	ISOL	ISOL	ISOL
36	LAKSHADWEEP	SCT	SCT	SCT	SCT	SCT	SCT	SCT

Legend	Category	% Stations
WS	Widespread/Most Places	76-100
FWS	Fairly Widespread/Many places	51-75
SCT	Scattered/ A Few Places	26-50
ISOL	Isolated Places	1-25
DRY	No Rain	0

* Red color warning does not mean "Red Alert" Red color warning means "Take Action".
Forecast and Warning for any day is valid from 0830 hours IST of day till 0830 hours IST of next day For
more details kindly visit <https://mausam.imd.gov.in> or contact : 011-2434-4599
(Service to the Nation since 1875)

Fig. 1: Maximum Temperatures Dated 21.08.2023

Fig. 2: Departure of Maximum Temp. Dated 21.08.2023

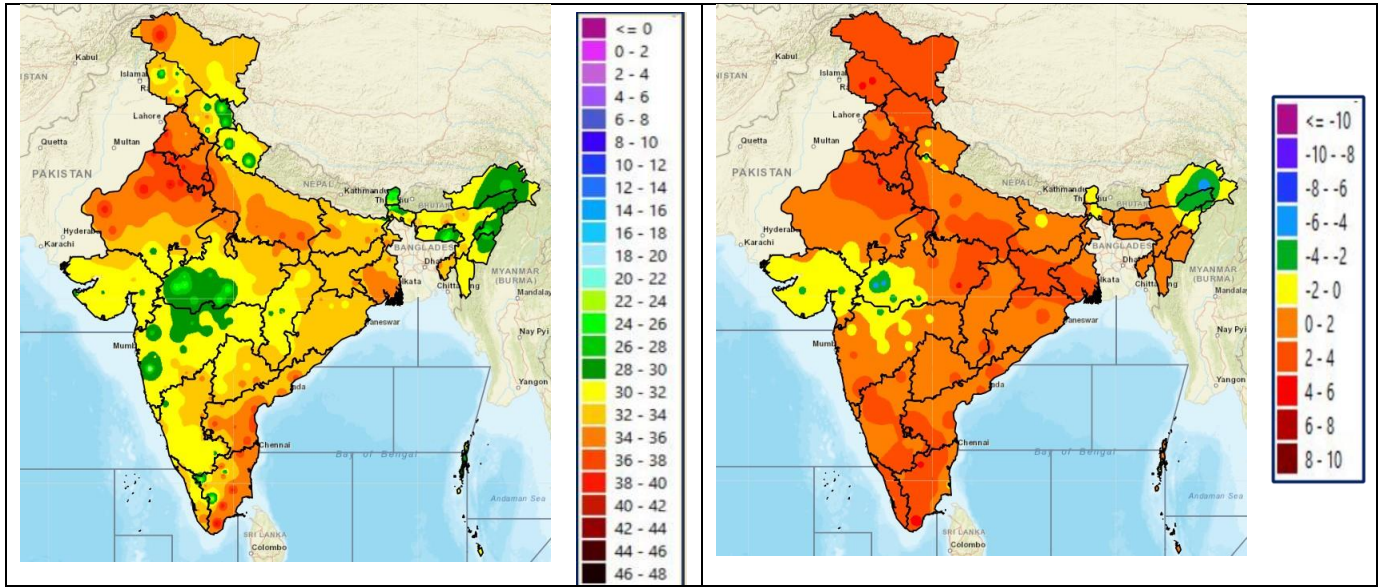
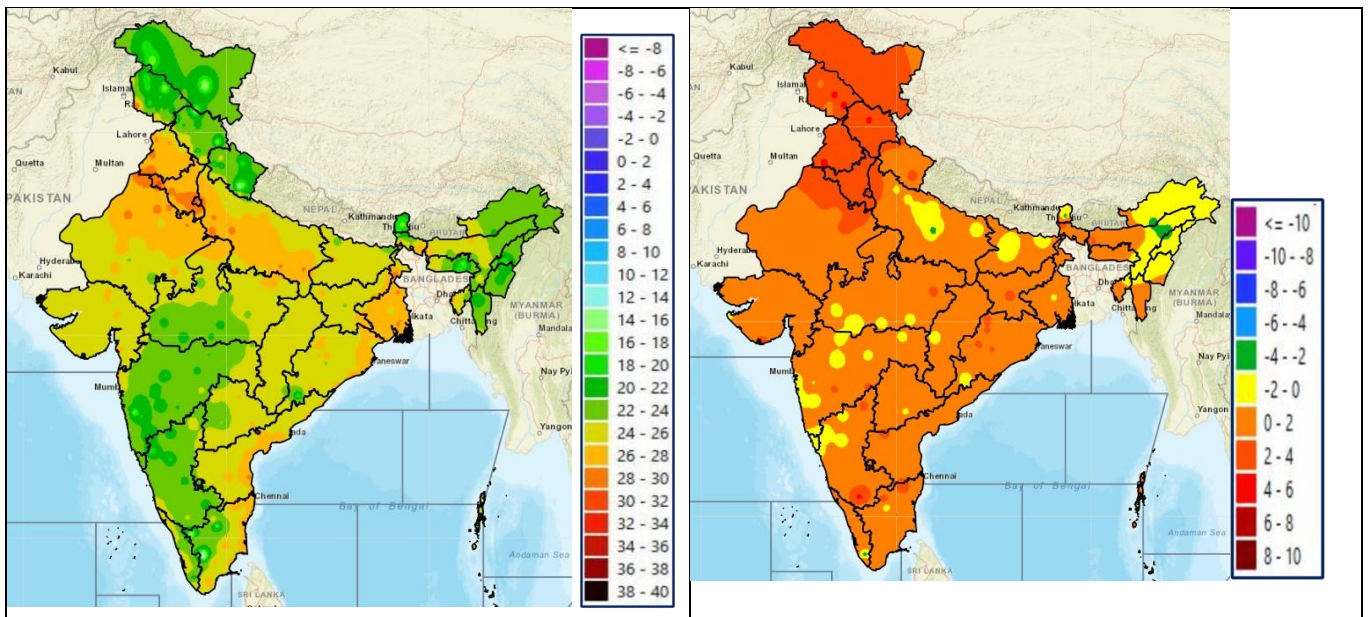


Fig. 3: Minimum Temperatures Dated 22.08.2023

Fig. 4: Departure of Minimum Temp. Dated 22.08.2023

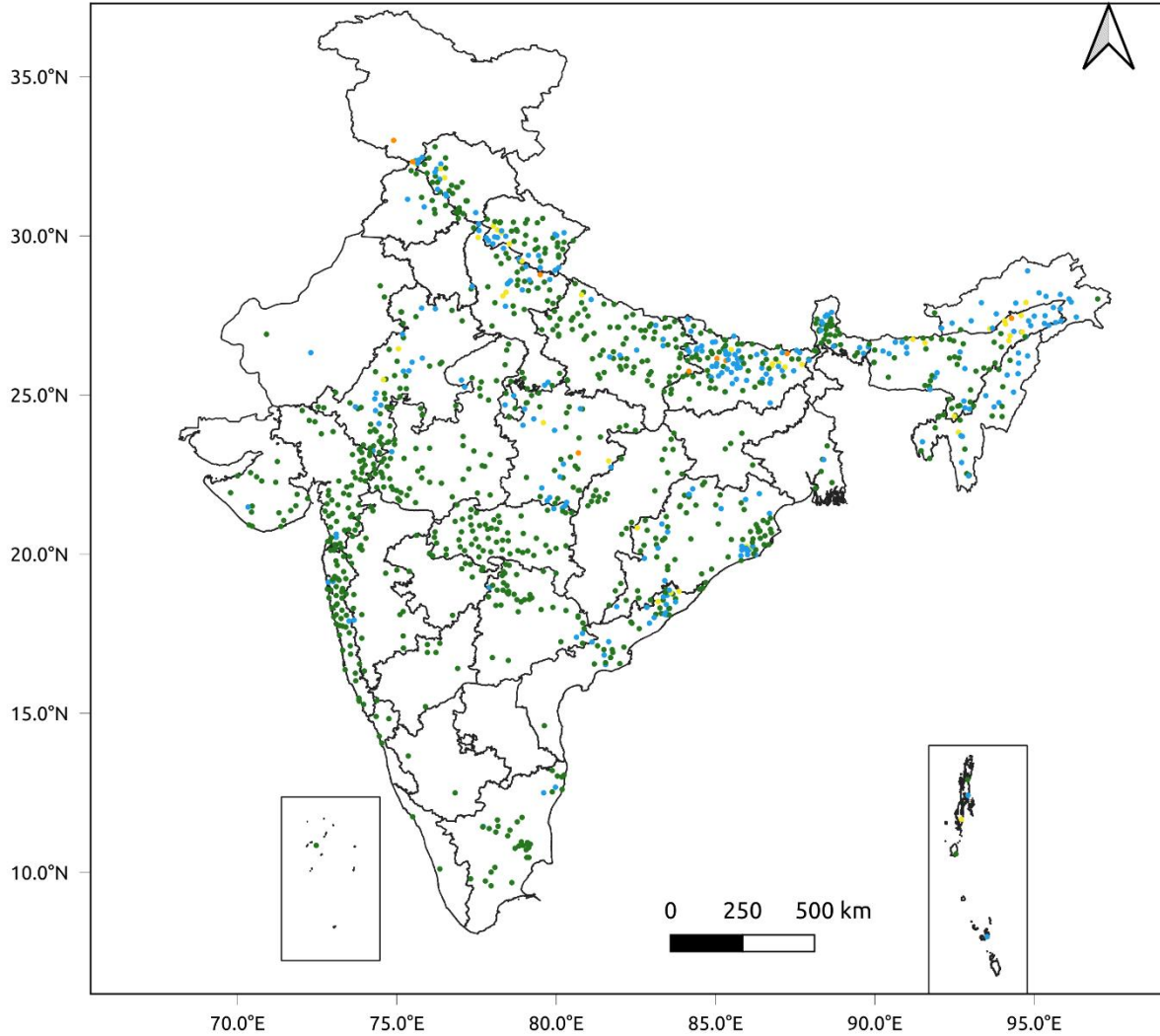


* Red color warning does not mean "Red Alert" Red color warning means "Take Action".
Forecast and Warning for any day is valid from 0830 hours IST of day till 0830 hours IST of next day For
more details kindly visit <https://mausam.imd.gov.in> or contact : 011-2434-4599
(Service to the Nation since 1875)

Fig. 5: Accumulated Rainfall (mm) during past 24 hours

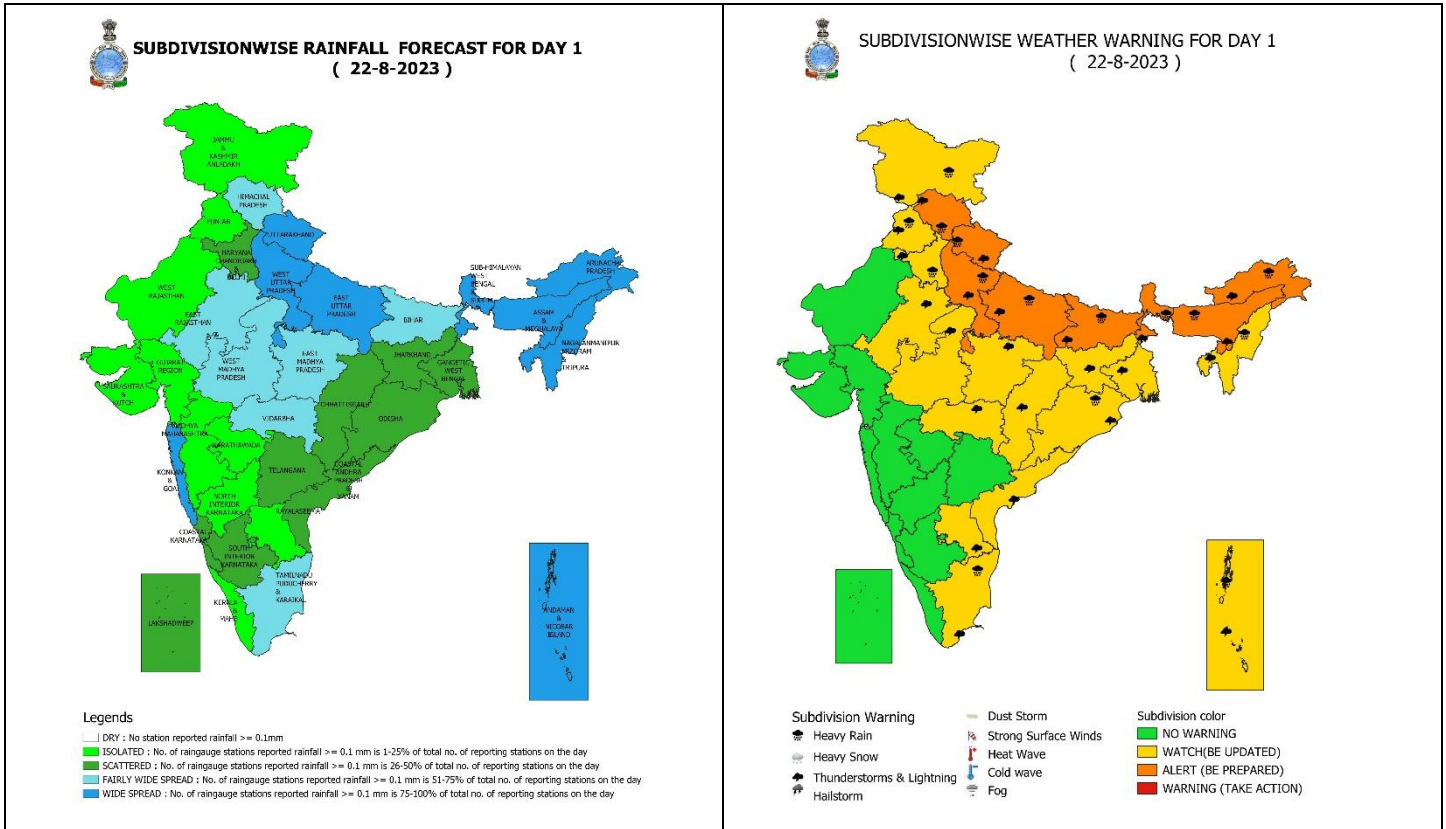


24 Hr cumulative rainfall recorded over different stations during 0830 IST of 21-8-2023 to 0830 IST of 22-8-2023



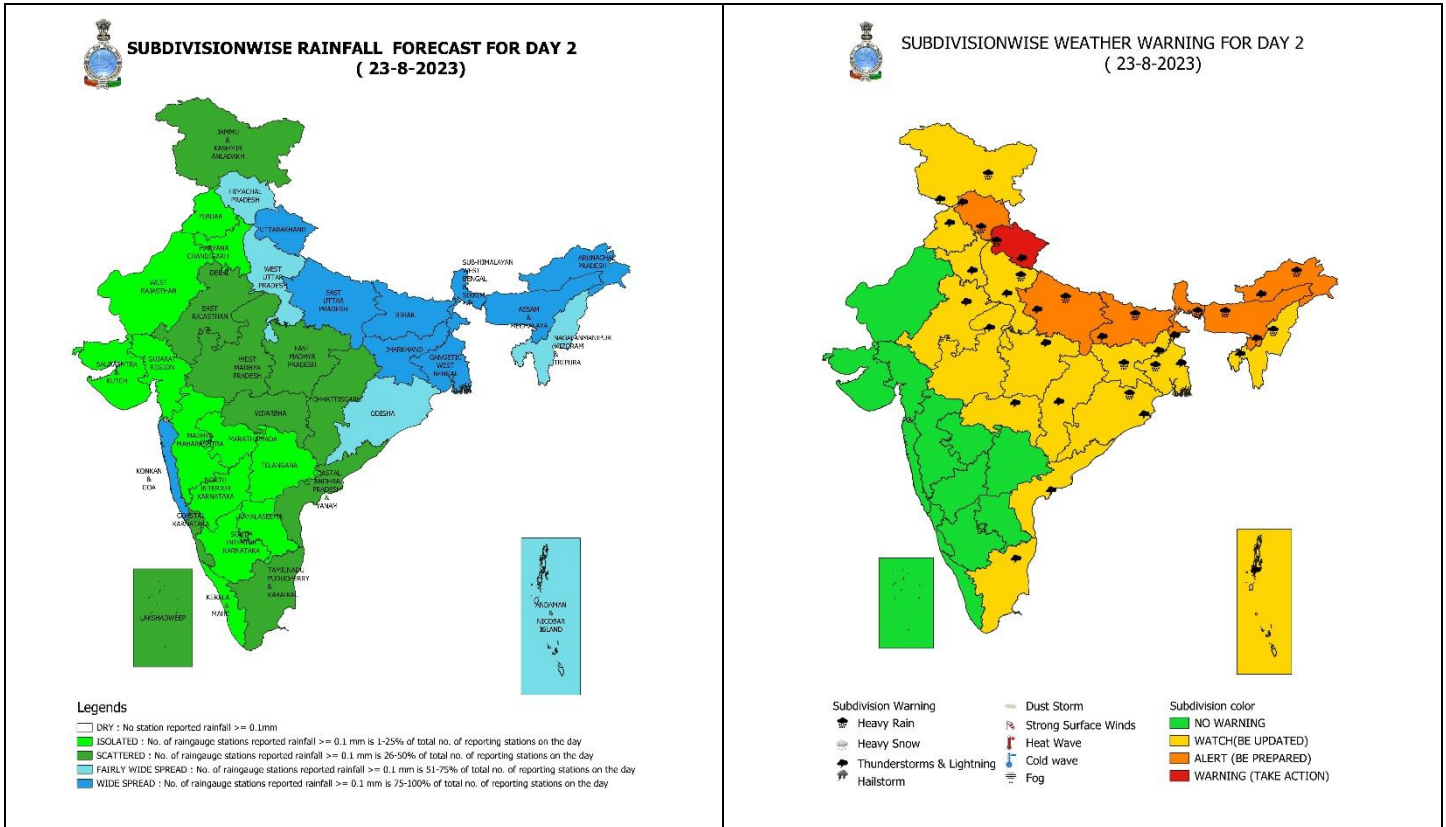
Legends

- Very Light to Light Rainfall (0.1 - 15.5 mm)
- Moderate Rainfall (15.6 - 64.4 mm)
- Heavy Rainfall (64.5 - 115.5 mm)
- Very Heavy Rainfall (115.6 - 204.4 mm)
- Extremely Heavy Rainfall (≥ 204.5 mm)



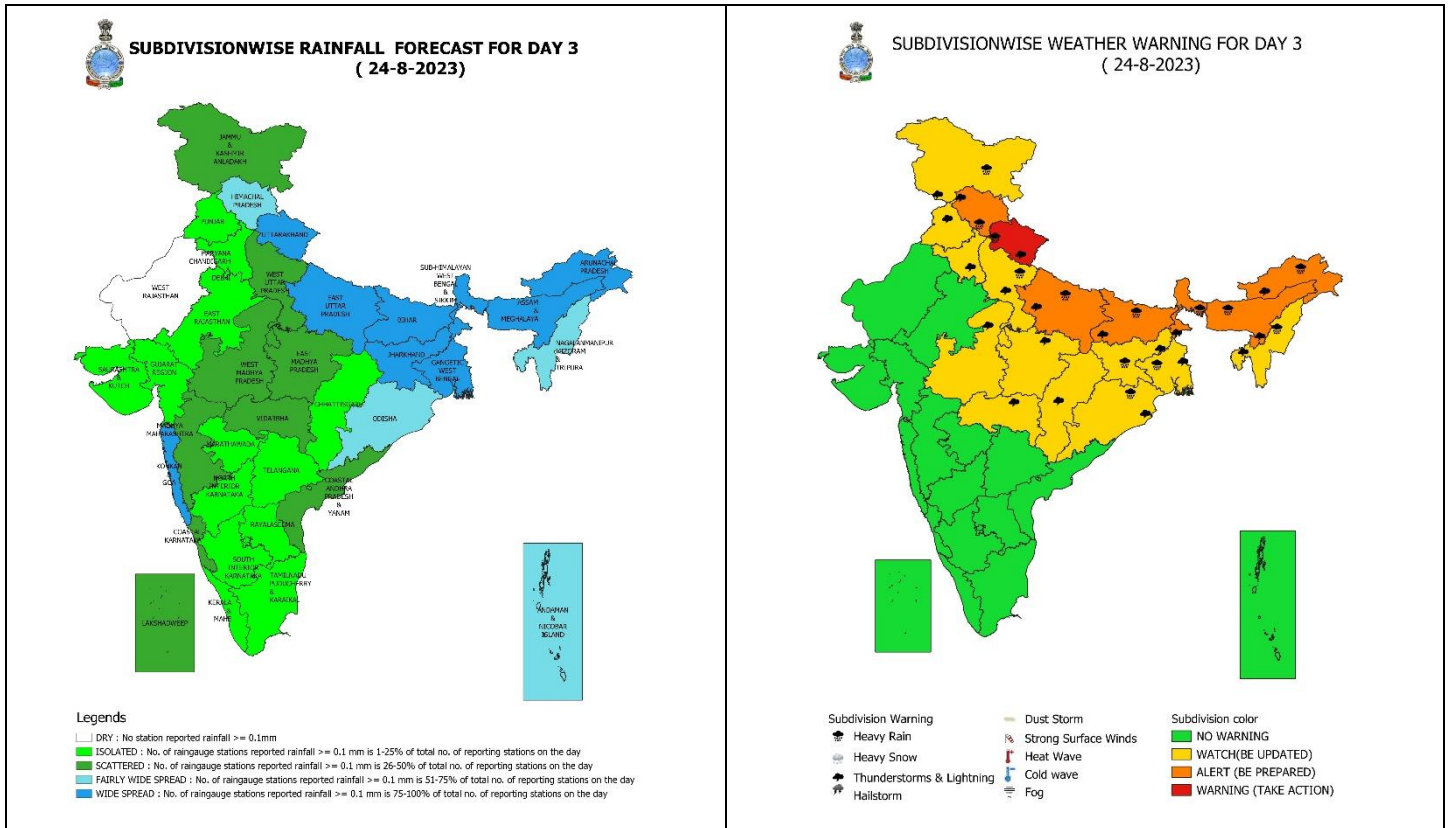
22 August (Day 1): -

- ❖ **Heavy to very heavy rainfall with extremely heavy falls** very likely at isolated places over Sub-Himalayan West Bengal & Sikkim; **Heavy to very heavy rainfall** at isolated places over Himachal Pradesh, Uttarakhand, Uttar Pradesh, Bihar, Arunachal Pradesh, Assam & Meghalaya and **Heavy rainfall** at isolated places over Jammu-Kashmir-Ladakh-Gilgit-Baltistan-Muzaffarabad, Punjab, Haryana-Chandigarh-Delhi, Andaman & Nicobar Islands, Odisha, Nagaland, Manipur, Mizoram & Tripura, Tamil Nadu, Puducherry & Karaikal.
- ❖ **Thunderstorm with lightning** very likely at isolated places over Jammu-Kashmir-Ladakh-Gilgit-Baltistan-Muzaffarabad, Himachal Pradesh, Uttarakhand, Punjab, Haryana-Chandigarh-Delhi, Uttar Pradesh, East Rajasthan, Madhya Pradesh, Vidarbha, Chhattisgarh, Andaman & Nicobar Islands, West Bengal & Sikkim, Bihar, Jharkhand, Odisha, Arunachal Pradesh, Assam & Meghalaya, Nagaland, Manipur, Mizoram & Tripura, Coastal Andhra Pradesh & Yanam, Rayalaseema, Tamil Nadu, Puducherry & Karaikal.
- ❖ **Squally wind speed of 45-55 kmph gusting to 65 kmph** likely over Westcentral & adjoining Southwest Arabian Sea. **Fishermen are advised not to venture into these areas.**



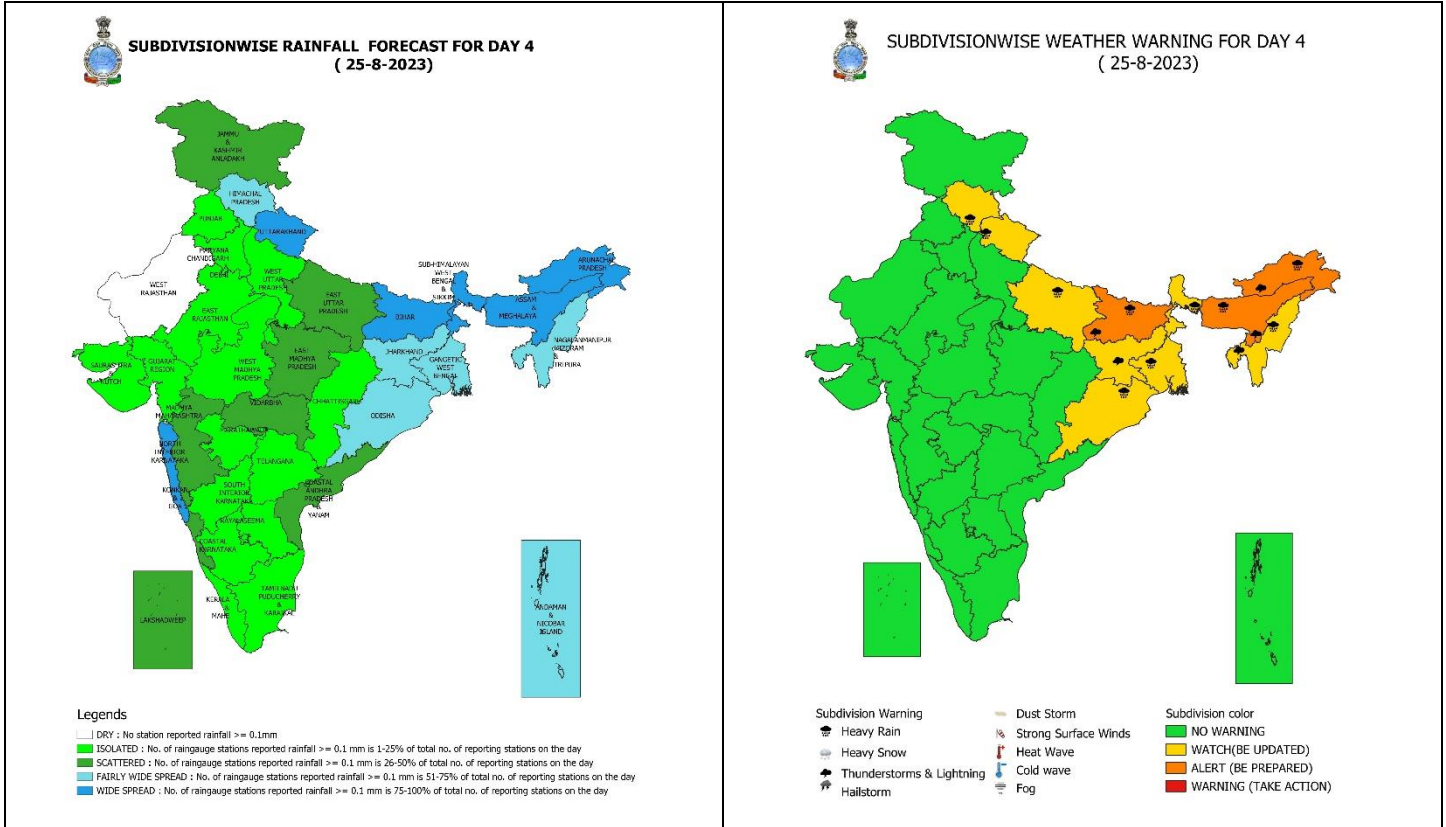
23 August (Day 2): -

- ❖ **Heavy to very heavy rainfall with extremely heavy falls** very likely at isolated places over Uttarakhand, Bihar and Sub-Himalayan West Bengal & Sikkim; **Heavy to very heavy rainfall** at isolated places over Himachal Pradesh, East Uttar Pradesh, Arunachal Pradesh, Assam & Meghalaya and **Heavy rainfall** at isolated places over Jammu-Kashmir-Ladakh-Gilgit-Baltistan-Muzaffarabad, West Uttar Pradesh, Gangetic West Bengal, Jharkhand, Odisha, Nagaland, Manipur, Mizoram & Tripura.
- ❖ **Thunderstorm with lightning** very likely at isolated places over Jammu-Kashmir-Ladakh-Gilgit-Baltistan-Muzaffarabad, Himachal Pradesh, Uttarakhand, Punjab, Haryana-Chandigarh-Delhi, Uttar Pradesh, East Rajasthan, Madhya Pradesh, Vidarbha, Chhattisgarh, Andaman & Nicobar Islands, West Bengal & Sikkim, Bihar, Jharkhand, Odisha, Arunachal Pradesh, Assam & Meghalaya, Nagaland, Manipur, Mizoram & Tripura, Coastal Andhra Pradesh & Yanam, Tamil Nadu, Puducherry & Karaikal.
- ❖ **Squally wind speed of 45-55 kmph gusting to 65 kmph** likely over Westcentral & adjoining Southwest and Northwest Arabian Sea. **Fishermen are advised not to venture into these areas.**



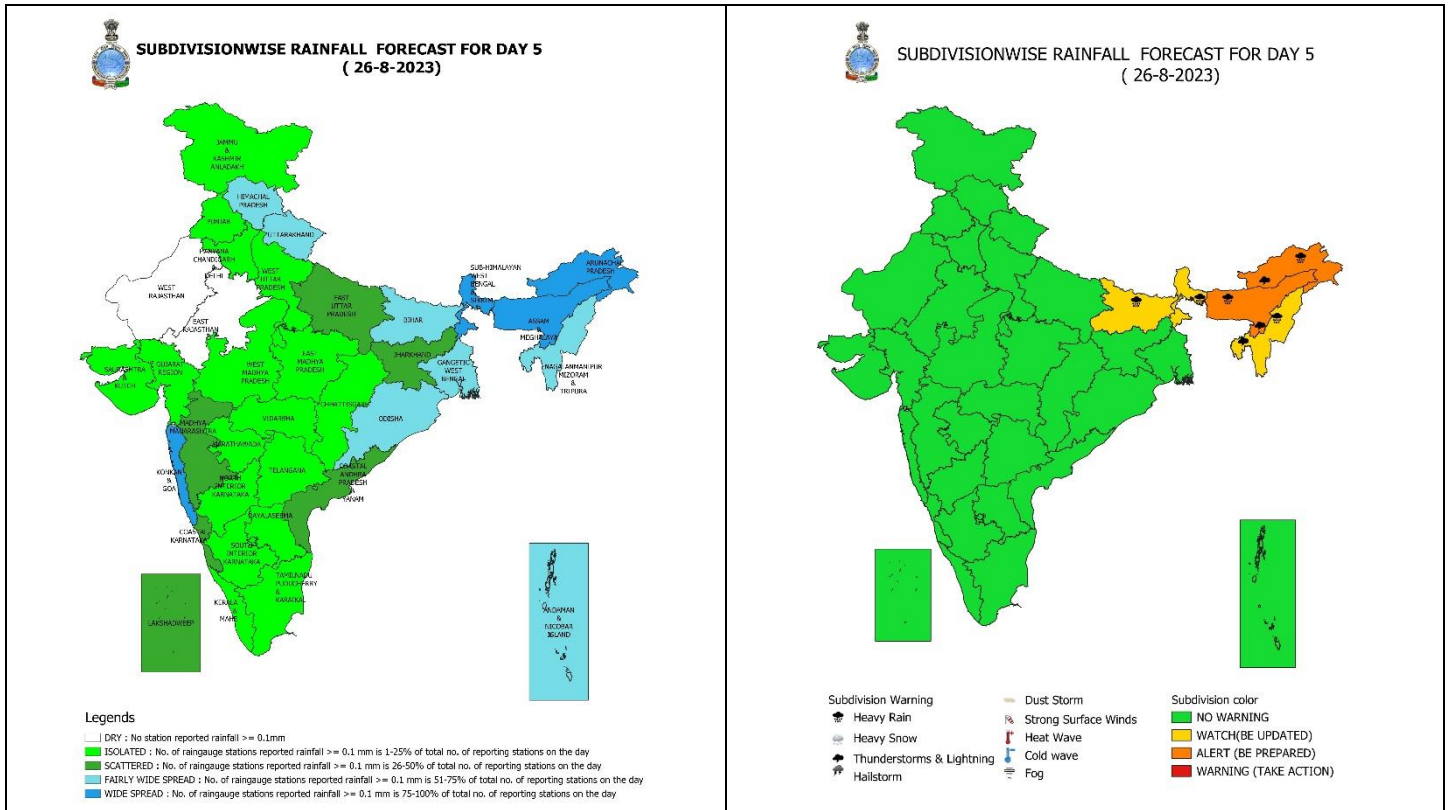
24 August (Day 3): -

- ❖ **Heavy to very heavy rainfall with extremely heavy falls** very likely at isolated places over Uttarakhand, Bihar; **Heavy to very heavy rainfall** at isolated places over Himachal Pradesh, East Uttar Pradesh, Sub-Himalayan West Bengal & Sikkim, Arunachal Pradesh, Assam & Meghalaya and **Heavy rainfall** at isolated places over Jammu-Kashmir-Ladakh-Gilgit-Baltistan-Muzaffarabad, West Uttar Pradesh, Gangetic West Bengal, Jharkhand, Odisha, Nagaland, Manipur, Mizoram & Tripura.
- ❖ **Thunderstorm with lightning** very likely at isolated places over Jammu-Kashmir-Ladakh-Gilgit-Baltistan-Muzaffarabad, Himachal Pradesh, Uttarakhand, Punjab, Haryana-Chandigarh-Delhi, Uttar Pradesh, Madhya Pradesh, Vidarbha, Chhattisgarh, West Bengal & Sikkim, Bihar, Jharkhand, Odisha, Arunachal Pradesh, Assam & Meghalaya, Nagaland, Manipur, Mizoram & Tripura.
- ❖ **Squally wind speed of 45-55 kmph gusting to 65 kmph** likely over Westcentral & adjoining Eastcentral, Southwest and Northwest Arabian Sea. **Fishermen are advised not to venture into these areas.**



25 August (Day 4): -

- ❖ **Heavy to very heavy rainfall** likely at isolated places over Bihar, Arunachal Pradesh, Assam & Meghalaya and **Heavy rainfall** at isolated places over Himachal Pradesh, Uttarakhand, East Uttar Pradesh, West Bengal & Sikkim, Odisha, Nagaland, Manipur, Mizoram & Tripura.
- ❖ **Thunderstorm with lightning** likely at isolated places over Bihar, Jharkhand, Arunachal Pradesh, Assam & Meghalaya, Nagaland, Manipur, Mizoram & Tripura.
- ❖ **Squally wind speed of 45-55 kmph gusting to 65 kmph** likely over Westcentral & adjoining Eastcentral, Southwest and North Arabian Sea. **Fishermen are advised not to venture into these areas.**



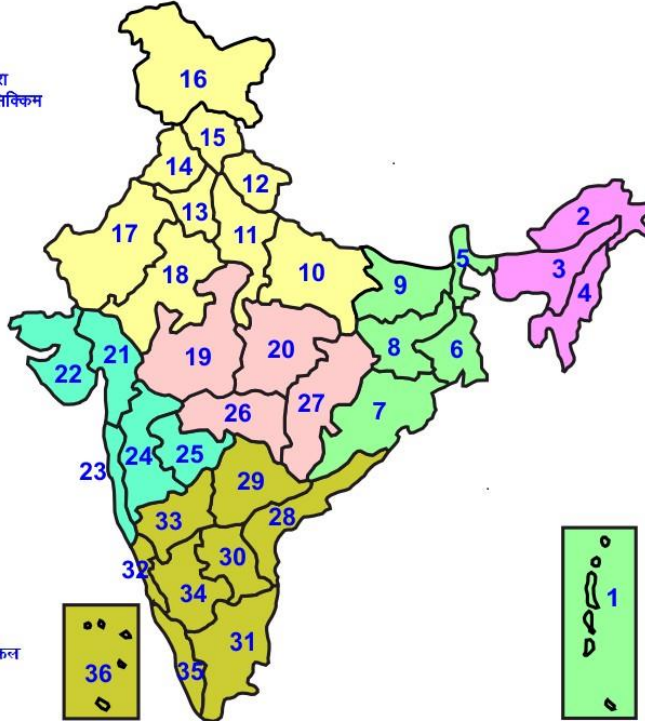
26 August (Day 5): -

- ❖ **Heavy to very heavy rainfall** likely at isolated places over Arunachal Pradesh, Assam & Meghalaya and **Heavy rainfall** at isolated places over Sub-Himalayan West Bengal & Sikkim, Bihar, Nagaland, Manipur, Mizoram & Tripura.
- ❖ **Thunderstorm with lightning** likely at isolated places over Arunachal Pradesh, Assam & Meghalaya, Nagaland, Manipur, Mizoram & Tripura.
- ❖ **Squally wind speed of 45-55 kmph gusting to 65 kmph** likely over Westcentral & adjoining Eastcentral, Southwest and North Arabian Sea. **Fishermen are advised not to venture into these areas.**



LEGENDS

- 1 अंडमान और निकोबार द्वीप समूह
- 2 अरुणाचल प्रदेश
- 3 असम और मेघालय
- 4 नागालैंड मनीपुर मीजोरम और त्रिपुरा
- 5 उप हिमालय पश्चिम बंगाल एवं सिक्किम
- 6 पश्चिम गंगेय बंगाल
- 7 ओडिसा
- 8 झारखंड
- 9 बिहार
- 10 पूर्वी उत्तर प्रदेश
- 11 पश्चिम उत्तर प्रदेश
- 12 उत्तराखंड
- 13 हरियाणा चंडिगढ़ एवं दिल्ली
- 14 पंजाब
- 15 हिमाचल प्रदेश
- 16 जम्मू एवं कश्मीर एवं लद्दाख
- 17 पश्चिम राजस्थान
- 18 पूर्वी राजस्थान
- 19 पश्चिम मध्य प्रदेश
- 20 पूर्वी मध्य प्रदेश
- 21 गुजरात क्षेत्र
- 22 सौराष्ट्र एवं कच्छ
- 23 कोंकण एवं गोवा
- 24 मध्य महाराष्ट्र
- 25 मराठावाड़ा
- 26 विदर्भ
- 27 छत्तीसगढ़
- 28 तटीय आंध्र प्रदेश एवं यनम
- 29 तेलंगाना
- 30 रायलसेमा
- 31 तमिलनाडु, पुदुचेरी एवं कराईकल
- 32 तटिय कर्नाटक
- 33 आंतरिक उत्तरी कर्नाटक
- 34 आंतरिक दक्षिणी कर्नाटक
- 35 केरल एवं माले
- 36 लक्षद्वीप



1. Andaman & Nicobar Islands
2. Arunachal Pradesh
3. Assam & Meghalaya
4. Nagaland, Manipur, Mizoram & Tripura
5. Sub-Himalayan West Bengal & Sikkim
6. Gangetic West Bengal
7. Orissa
8. Jharkhand
9. Bihar
10. East Uttar Pradesh
11. West Uttar Pradesh
12. Uttarakhand
13. Haryana, Chd & Delhi
14. Punjab
15. Himachal Pradesh
16. Jammu & Kashmir and Ladakh
17. West Rajasthan
18. East Rajasthan
19. West Madhya Pradesh
20. East Madhya Pradesh
21. Gujarat
22. Saurashtra
23. Konkan & Goa
24. Madhya Maharashtra
25. Marathwada
26. Vidharbha
27. Chhattisgarh
28. Coastal Andhra Pradesh & Yanam
29. Telangana
30. Rayalaseema
31. Tamilnadu, Puducherry & Karaikal
32. Coastal Karnataka
33. North Interior Karnataka
34. South Interior Karnataka
35. Kerala & Mahe
36. Lakshadweep

SPATIAL DISTRIBUTION (% of Stations reporting)

% Stations	Category	% Stations	Category
76-100	Widespread (WS/ Most Places)	26-50	Scattered (SCT/ A Few Places)
51-75	Fairly Widespread (FWS/ Many Places)	1-25	Isolated (ISOL)

WARNING

WARNING (TAKE ACTION)
ALERT (BE PREPARED)
WATCH (BE UPDATED)
NO WARNING (NO ACTION)

Probabilistic Forecast

Terms	Probability of Occurrence (%)
Unlikely	< 25
Likely	25 - 50
Very Likely	50 - 75
Most Likely	> 75



Heavy Rain



Heavy Snow



Thunderstorm



Dust Storm



Strong Winds



Visibility



Cyclone



Squall/ Hail



Frost



Cold Wave



Heat Wave



Sea State

* Red color warning does not mean "Red Alert" Red color warning means "Take Action".

Forecast and Warning for any day is valid from 0830 hours IST of day till 0830 hours IST of next day For more details kindly visit <https://mausam.imd.gov.in> or contact : 011-2434-4599

(Service to the Nation since 1875)

LEGENDS

WARNING

WARNING (TAKE ACTION)
ALERT (BE PREPARED)
WATCH (BE UPDATED)
NO WARNING (NO ACTION)

Probabilistic Forecast

Terms	Probability of Occurrence (%)
Unlikely	< 25
Likely	25 - 50
Very Likely	50 - 75
Most Likely	> 75



Rain/ Snow *

Heavy: 64.5 to 115.5 mm/cm *
Very Heavy: 115.6 to 204.4 mm/cm*
Extremely Heavy: > 204.4 mm/cm *



Heat Wave

When maximum temperature of a station reaches $\geq 40^{\circ}\text{C}$ for plains and $\geq 30^{\circ}\text{C}$ for hilly regions
(a) Based on Departure from normal

Heat Wave: Maximum Temperature Departure from normal 4.5°C to 6.4°C .

Severe Heat Wave: Maximum Temperature Departure from normal $\geq 6.5^{\circ}\text{C}$

(b). Based on Actual maximum temperature

Heat Wave: When actual maximum temperature $\geq 45^{\circ}\text{C}$.

Severe Heat Wave: When actual maximum temperature $\geq 47^{\circ}\text{C}$

(c). Criteria for heat wave for coastal stations

When maximum temperature departure is $> 4.5^{\circ}\text{C}$ from normal. Heat Wave may be described provided maximum temperature $\geq 37^{\circ}\text{C}$



Warm Night

When maximum temperature remains 40°C

Warm Night: When minimum temperature departure 4.5°C to 6.4°C .

Severe Warm Night: When minimum temperature departure $> 6.4^{\circ}\text{C}$.



Cold Wave

When minimum temperature of a station $\leq 10^{\circ}\text{C}$ for plains and $\leq 0^{\circ}\text{C}$ for hilly regions.

(a). Based on departure

Cold Wave: Minimum Temperature Departure from normal -4.5°C to -6.4°C .

Severe Cold Wave: Minimum Temperature Departure from normal $\leq -6.5^{\circ}\text{C}$

(b) Based on actual Minimum Temperature (for Plains only)

Cold Wave : When Minimum Temperature is $\leq 4.0^{\circ}\text{C}$

Severe Cold Wave: When Minimum Temperature is $\leq 2.0^{\circ}\text{C}$

(c) For Coastal Stations

When Minimum Temperature departure is $\leq -4.5^{\circ}\text{C}$ & actual Minimum Temperature is $\leq 15^{\circ}\text{C}$



Cold Day

When minimum temperature of a station $\leq 10^{\circ}\text{C}$ for plains and $\leq 0^{\circ}\text{C}$ for hilly regions
Based on departure

Cold Day: Maximum Temperature Departure from normal -4.5°C to -6.4°C .

Severe Cold Day: Maximum Temperature Departure from normal $\leq -6.5^{\circ}\text{C}$



Fog

Phenomenon of small droplets suspended in air and the horizontal visibility < 1km

Moderate Fog: When the visibility between 500-200 metres

Dense Fog: when the visibility between 50- 200 metres

Very Dense Fog: when the visibility < 50 metres



Thunderstorm

Sudden electrical discharges manifested by a flash of light (Lightning) and a sharp rumbling sound (thunder)



Dust/Sand Storm

An ensemble of particles of dust or sand energetically lifted to great heights by a strong and turbulent wind.



Frost

Ice deposits on ground

Air temperature $\leq 4^{\circ}\text{C}$ (over Plains)



Squall

A strong wind that rises suddenly, lasts for atleast 1 minute.

Moderate: Wind speed 52-61 kmph

Severe: Wind speed 62-87 kmph

Very Severe: Wind speed > 87 kmph



Sea State

Effect of various waves in the sea over specific area

Rough to very rough: Wind speed 41-62 kmph (22-33 knots) & Wave height 2.5-6 metre

High to very high: Wind speed 63-117 kmph (34-63 knots) & Wave height 6-14 metre

Phenomenal: Wind speed > 117 kmph (> 63 knots) & Wave height > 14 metre



Cyclone

Cyclonic Storm: Wind speed 62-87 kmph (34-47 knots)

Severe Cyclonic Storm: Wind speed 88-117 kmph (48-63 knots)

Very Severe Cyclonic Storm: Wind speed 118-165 kmph (64 - 89 knots)

Extremely Severe Cyclonic Storm: Wind speed 166-220 kmph (90 -119 knots)

Super Cyclone Storm: Wind speed > 220 kmph (> 119 knots)

* Red color warning does not mean "Red Alert" Red color warning means "Take Action".

Forecast and Warning for any day is valid from 0830 hours IST of day till 0830 hours IST of next day For more details kindly visit <https://mausam.imd.gov.in> or contact : 011-2434-4599

(Service to the Nation since 1875)