

2025-09-15

Time of Issue: 07:58:00 hours IST  
(Morning)

## ALL INDIA WEATHER SUMMARY AND FORECAST BULLETIN

### Significant Weather Features

#### Weather forecast and warning:

##### Northeast India:

- Light/moderate rain/thunderstorm at most/many places with isolated heavy rainfall likely over Arunachal Pradesh on 17th; Assam & Meghalaya, Nagaland, Manipur, Mizoram & Tripura on 15th, 16th & during 18th -21st September **with very heavy falls over Arunachal Pradesh on 15th & 16th September.**

##### South Peninsular India:

- Light to moderate rain/thunderstorm & gusty winds (speed 30-40 kmph) at many/some places with isolated heavy rainfall likely over Tamil Nadu during 16th-19th; Telangana on 15th; North Interior Karnataka on 15th & 16th September.
- Strong surface winds (speed reaching 30-50 kmph) very likely over Coastal Andhra Pradesh & Yanam and Rayalaseema during next 5 days.

##### East & Central India:

- Light to moderate rain/thunderstorm at most/many places with isolated heavy rainfall likely over West Madhya Pradesh, Vidarbha on 15th & 16th; East Madhya Pradesh, Chhattisgarh on 15th; Andaman & Nicobar Islands during 17th- 19th; Sub-Himalayan West Bengal & Sikkim, Jharkhand during 16th-18th; Bihar on 17th & 18th September **with isolated very heavy falls over Sub-Himalayan West Bengal & Sikkim on 15th and Bihar on 15th & 16th September.**

##### West India:

- Light to moderate rain/thunderstorm at many/some places with isolated heavy rainfall likely over Konkan & Goa, Madhya Maharashtra & Marathawada on 16th September **with very heavy falls over Konkan & Goa Madhya, Maharashtra & Marathawada 15th September.**

##### Northwest India:

- Light to moderate rain/thunderstorm at some/isolated places with isolated heavy rainfall likely over Uttarakhand on 16th; East Uttar Pradesh during 15th-21st September **with very heavy falls over Uttarakhand on 15th September.**

\*Red color warning does not mean "Red Alert" Red color warning means "Take Action"

Forecast and warning for any day is valid from 0830 hours IST of day till 0830 hours IST of next day

For more details kindly visit <https://mausam.imd.gov.in> or contact 011-2434-4599

(Service to the nation since 1875)

### Main Weather Observations:

❖ **Rainfall distribution** (from 0830 hours IST of yesterday to 0530 hours IST of today): **at most places** over Konkan & Goa, Himachal Pradesh, Uttarakhand, Sub-himalayan West Bengal & Sikkim, North Interior Karnataka, Jharkhand, Gangetic West Bengal, Assam & Meghalaya, Madhya Maharashtra, Arunachal Pradesh, Nagaland, Manipur, Mizoram & Tripura, Bihar, Coastal Karnataka, Marathwada and Telangana; **at many places** over Jammu & Kashmir and Ladakh, Saurashtra & Kutch, East Rajasthan, West Uttar Pradesh, East Uttar Pradesh, Odisha, Coastal Andhra Pradesh & Yanam, Chhattisgarh, Andaman & Nicobar Islands, Rayalaseema, Tamilnadu Puducherry & Karaikal and Lakshadweep; **Dry** over rest of the country.

❖ **Significant rainfall recorded(in cm)** (from 0830 hours IST of yesterday to 0530 hours IST of today): **Konkan & Goa:** Mumbai (colaba) (dist) 9, Ratnagiri (dist Ratnagiri) 6, Mumbai (santacruz) AP (dist) 4; **Jharkhand:** Daltonganj (dist Palamu) 9, Ranchi AP (dist Ranchi) 4; **Assam & Meghalaya:** North Lakhimpur (dist Lakhimpur) 6, Tezpur (dist Sonitpur) 5, Cherrapunji (dist East Khasi Hills) 4; **Odisha:** Paradip Port (dist Jagatsinghapur) 5, Bhubaneswar (dist Khordha) 2; **Madhya Maharashtra:** Pune- Shivajinagar (dist Pune) 4; **Arunachal Pradesh:** Itanagar (dist Papum Pare) 3; **Coastal Andhra Pradesh & Yanam:** Kalingapatnam (dist Srikakulam) 2; **Nagaland, Manipur, Mizoram & Tripura:** Agartala AP (dist West Tripura), Imphal (tulihal) AP (dist Imphal East) 2 Each; **Gangetic West Bengal:** Kolkata (dum Dum) AP (dist North 24 Parganas) 2; **Bihar:** Patna-airport (dist Patna), Gaya (dist Gaya) 2 Each.

❖ **Heavy Rainfall observed** (from 0830 hours IST of yesterday to 0530 hours IST of today): **Heavy rain** at a few places over Jharkhand, at isolated places over Assam & Meghalaya and Konkan & Goa.

❖ **Minimum Temperature Departures (as on 14-09-2025):** **markedly above normal(> 5.1°C)** at few places over Jammu-KashmirLadakh-Gilgit-Baltistan-Muzaffarabad, West Madhya Pradesh and East Madhya Pradesh; at isolated places over Assam & Meghalaya, Bihar, East Uttar Pradesh and Himachal Pradesh. **appreciably above normal(3.1°C to 5.0°C)** at isolated places over Sub Himalayan West Bengal & Sikkim, Gangetic West Bengal, Odisha, Gujarat Region and Saurashtra & Kutch. **above normal(1.6°C to 3.0°C)** at many places over West Uttar Pradesh; at few places over Jharkhand, Uttarakhand, Haryana-Chandigarh-Delhi and East Rajasthan; at isolated places over Andaman & Nicobar Islands, Nagaland, Manipur, Mizoram & Tripura, Punjab, West Rajasthan, Madhya Maharashtra, Vidarbha, Chhattisgarh and Tamil Nadu, Puducherry & Karaikal. **near normal(-1.5°C to 1.5°C)** at many places over Rayalaseema and Lakshadweep; at most places over Arunachal Pradesh, Konkan & Goa, Marathwada, Coastal Andhra Pradesh & Yanam, Telangana, Coastal Karnataka, North Interior Karnataka, South Interior Karnataka and Kerala & Mahe. **The lowest minimum temperature** of 17.5°C is reported at HALFLONG (ASSAM) over the Plains of India.

❖ **Maximum Temperature Departures (as on 14-09-2025):** **markedly above normal(> 5.1°C)** at isolated places over Odisha and Jammu-KashmirLadakh-Gilgit-Baltistan-Muzaffarabad. **appreciably above normal(3.1°C to 5.0°C)** at isolated places over Assam & Meghalaya, West Madhya Pradesh, East Madhya Pradesh, Vidarbha, Chhattisgarh and Kerala & Mahe. **above normal(1.6°C to 3.0°C)** at few places over Arunachal Pradesh, East Uttar Pradesh, West Uttar Pradesh, Punjab, East Rajasthan and Lakshadweep; at isolated places over Andaman & Nicobar Islands, Uttarakhand, Haryana-Chandigarh-Delhi, Himachal Pradesh, Gujarat Region, Madhya Maharashtra, Coastal Andhra Pradesh & Yanam, Rayalaseema, Tamil Nadu, Puducherry & Karaikal and South Interior Karnataka. **near normal(-1.5°C to 1.5°C)** at many places over Sub Himalayan West Bengal & Sikkim, Gangetic West Bengal, Jharkhand, Saurashtra & Kutch and Konkan & Goa; at most places over West Rajasthan, Telangana and Coastal Karnataka; at few places over North Interior Karnataka; at isolated places over Bihar. **The highest maximum temperature** of 38.5°C is reported at PALAYAMKOTTAI (TAMIL NADU).

\*Red color warning does not mean "Red Alert" Red color warning means "Take Action"

Forecast and warning for any day is valid from 0830 hours IST of day till 0830 hours IST of next day

For more details kindly visit <https://mausam.imd.gov.in> or contact 011-2434-4599

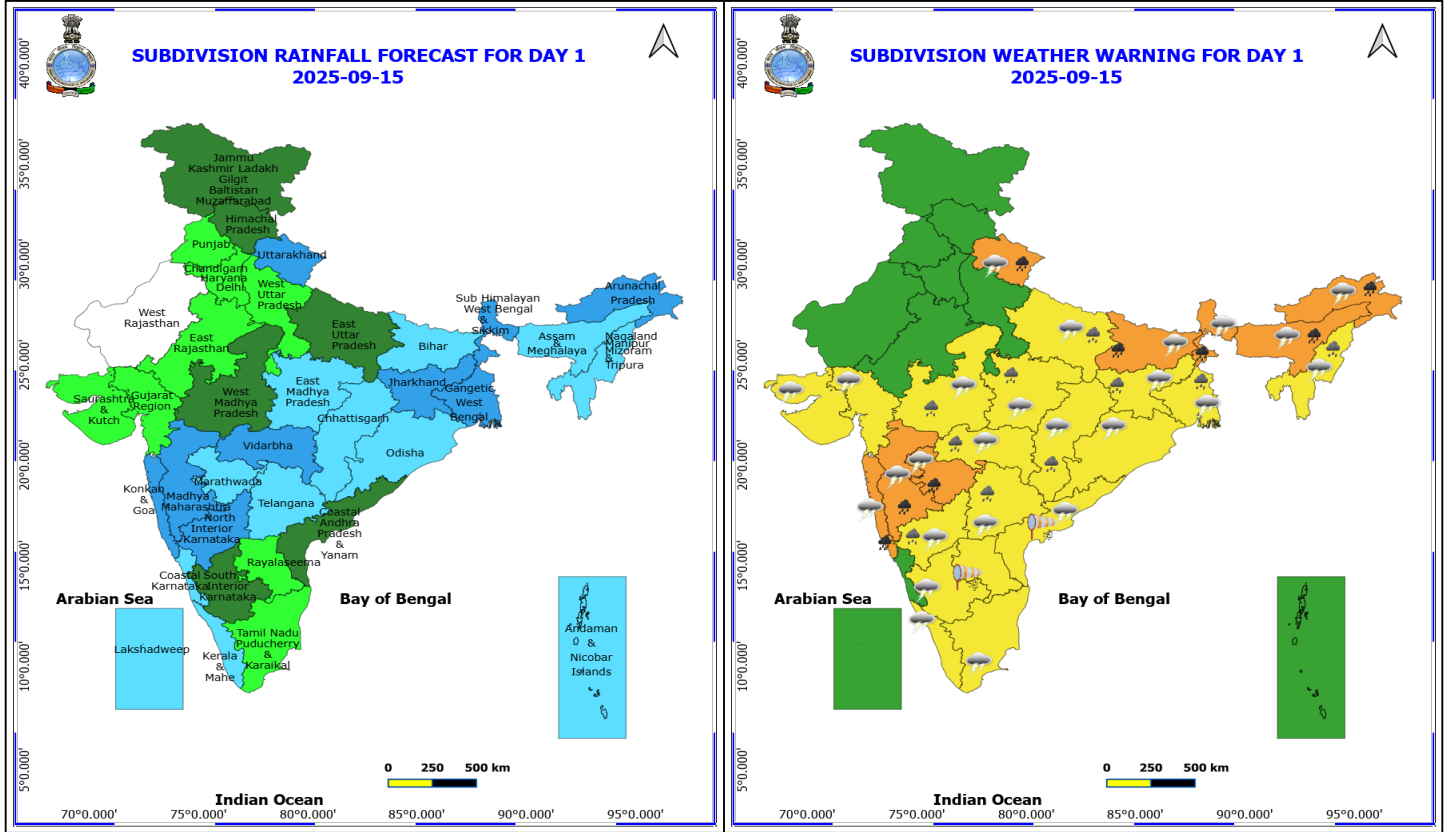
(Service to the nation since 1875)

### Meteorological Analysis (Based on 0530 hours IST)

- The **line of withdrawal of southwest monsoon** passes through 30.5°N /73.5°E, Sri Ganganagar, Nagaur, Jodhpur, Barmer and 25.5°N/70°E. Conditions are favourable for further withdrawal of Southwest Monsoon from some more parts of Rajasthan and some parts of Punjab and Gujarat during next 2 days.
- The **Low Pressure area** over north Telangana & adjoining Vidarbha has become less marked at 0530 hrs IST of today, the 15<sup>th</sup> September, 2025. However, The associated cyclonic circulation persisted over the same region and extended up to 4.5 km above mean sea level tilting southwestwards with height.
- The **trough from cyclonic circulation** associated with **low pressure area** over north Telangana & adjoining Vidarbha to south Maharashtra coast across North Interior Karnataka between 3.1 and 4.5 km above mean sea level persists.
- The **upper air cyclonic circulation** over northeast Bangladesh between 3.1 & 5.8 km above mean sea level persists.
- The **upper air cyclonic circulation** over central Assam at 3.1 km above mean sea level persists.
- The **trough** in westerlies at 1.5 km above mean sea level roughly along at Long. 84°E to the north of Lat. 23°N persists.
- The **upper air cyclonic circulation** over southeast Bay of Bengal between 3.1 & 5.8 km above mean sea level persists.
- The **cyclonic circulation** over westcentral Arabian sea & northwest Arabian Sea between 1.5 & 5.8 km above mean sea level tilting southwards with heights persists.

### Weather Outlook for subsequent 3 days

- Scattered to fairly widespread rainfall likely over Western India.
- Isolated to scattered rainfall likely over the rest parts of the country.

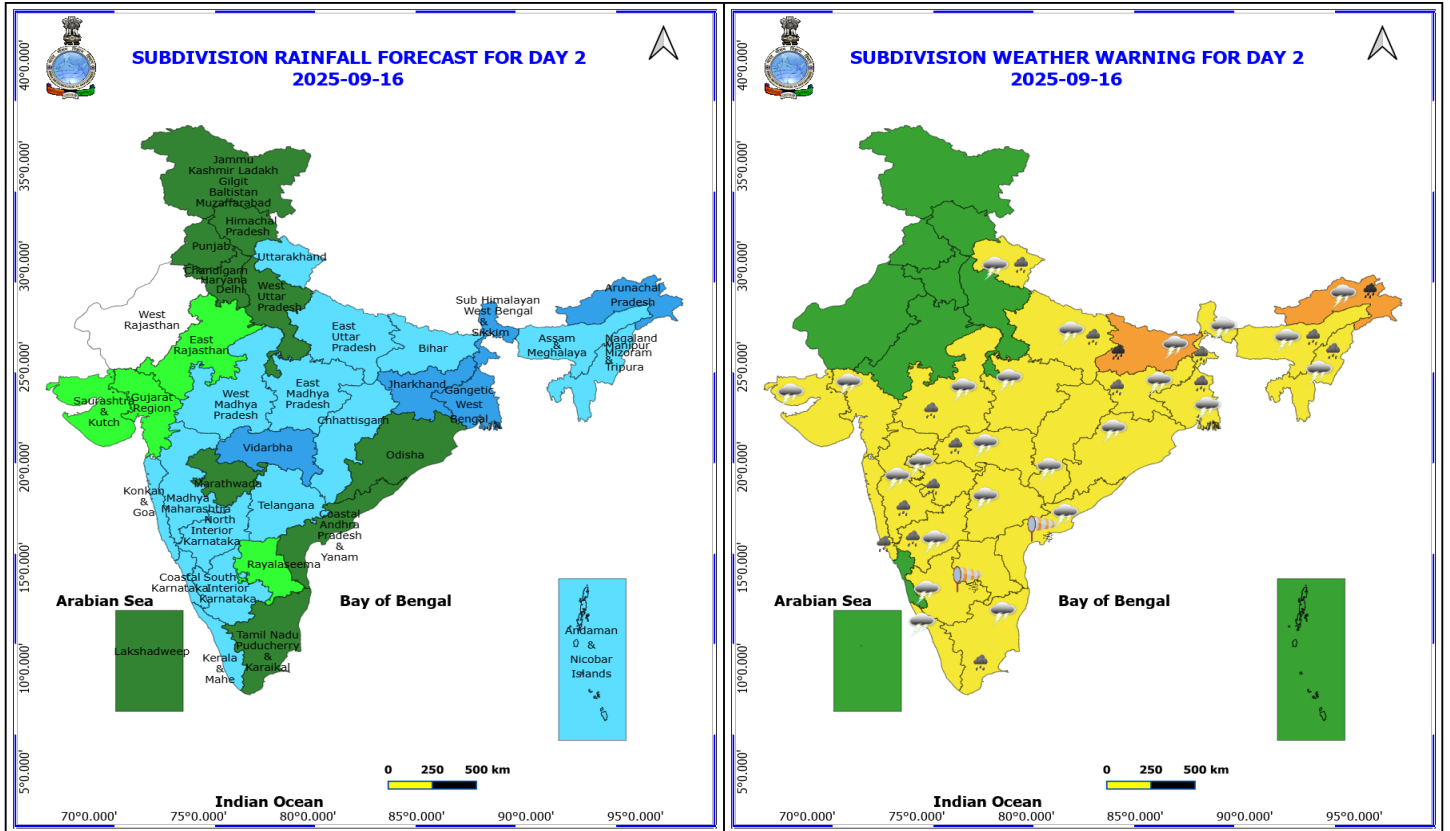


**15 September (Day 1)**

- ❖ **Heavy to Very Heavy Rainfall** very likely at isolated places over Arunachal Pradesh, Assam & Meghalaya, Bihar, Konkan & Goa, Madhya Maharashtra, Marathwada, Sub Himalayan West Bengal & Sikkim and Uttarakhand.
- ❖ **Heavy Rainfall** very likely at isolated places over Chhattisgarh, East Uttar Pradesh, Gangetic West Bengal, Jharkhand, Madhya Pradesh, Nagaland, Manipur, Mizoram and Tripura, North Interior Karnataka, Telangana and Vidarbha.
- ❖ **Thunderstorm accompanied with lightning & gusty winds(30-40kmph)** very likely at isolated places over Coastal Andhra Pradesh and Telangana.
- ❖ **Thunderstorm accompanied with Lightning** very likely at isolated places over Arunachal Pradesh, Assam & Meghalaya, Bihar, Chhattisgarh, East Uttar Pradesh, Gujarat State, Interior Karnataka, Jharkhand, Kerala & Mahe, Konkan & Goa, Madhya Pradesh, Maharashtra, Nagaland, Manipur, Mizoram and Tripura, Odisha, Tamil Nadu Puducherry & Karaikal, Uttarakhand and West Bengal & Sikkim.
- ❖ **Strong Surface Winds** very likely at isolated places over Andhra Pradesh.
  - Squally wind with speed reaching 45 kmph to 55 kmph gusting to 65 kmph is likely to prevail over some parts of southwest & few parts of westcentral Arabian Sea and along and off Somalia coast.
  - Squally weather with wind speed reaching 40 - 50 kmph gusting to 60 kmph likely to prevail over Gulf of Mannar & adjoining Comorin area and over some parts of southwest Bay of Bengal & along and off Sri Lanka coast, along & off Konkan-Goa coasts & adjoining sea areas.

**\*Red color warning does not mean "Red Alert" Red color warning means "Take Action"**  
Forecast and warning for any day is valid from 0830 hours IST of day till 0830 hours IST of next day  
For more details kindly visit <https://mausam.imd.gov.in> or contact 011-2434-4599

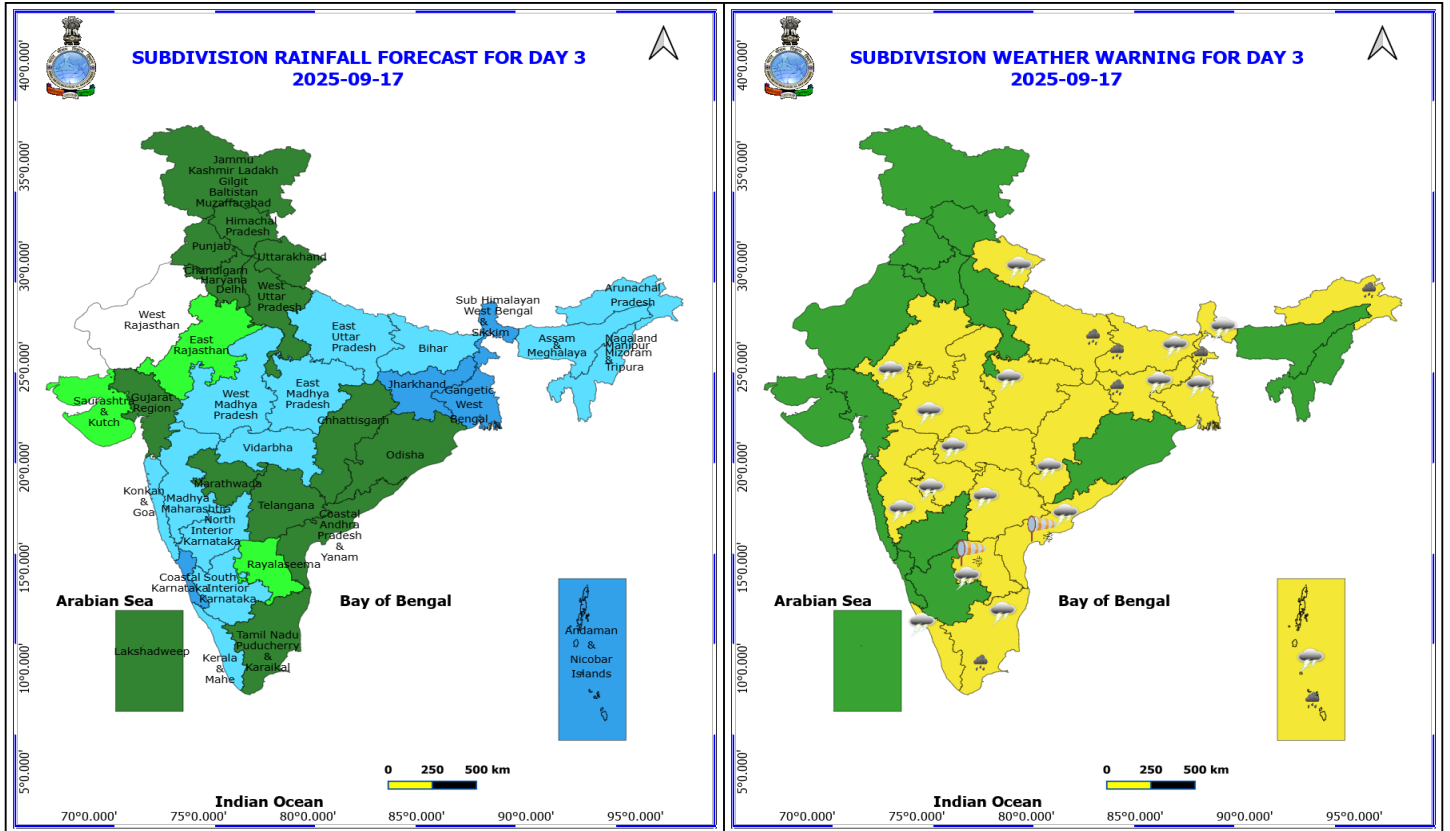
(Service to the nation since 1875)



**16 September (Day 2)**

- ❖ **Heavy to Very Heavy Rainfall** very likely at isolated places over Arunachal Pradesh and Bihar.
- ❖ **Heavy Rainfall** very likely at isolated places over Assam & Meghalaya, East Uttar Pradesh, Jharkhand, Konkan & Goa, Maharashtra, Nagaland, Manipur, Mizoram and Tripura, North Interior Karnataka, Tamil Nadu Puducherry & Karaikal, Uttarakhand, West Bengal & Sikkim and West Madhya Pradesh.
- ❖ **Thunderstorm accompanied with lightning & gusty winds(30-40kmph)** very likely at isolated places over Coastal Andhra Pradesh and Telangana.
- ❖ **Thunderstorm accompanied with Lightning** very likely at isolated places over Arunachal Pradesh, Assam & Meghalaya, Bihar, Chhattisgarh, East Uttar Pradesh, Gujarat State, Interior Karnataka, Jharkhand, Kerala & Mahe, Madhya Pradesh, Maharashtra, Nagaland, Manipur, Mizoram and Tripura, Odisha, Tamil Nadu Puducherry & Karaikal, Uttarakhand and West Bengal & Sikkim.
- ❖ **Strong Surface Winds** very likely at isolated places over Andhra Pradesh.
  - Squally wind with speed reaching 45 kmph to 55 kmph gusting to 65 kmph is likely to prevail over some parts of southwest & westcentral Arabian Sea and along and off Somalia & Oman coasts. Squally weather with wind speed reaching 40 – 50 kmph gusting to 60 kmph is likely to prevail over some parts of northwest and adjoining westcentral Arabian Sea and along & off Oman coast.
  - Squally weather with wind speed reaching 40 - 50 kmph gusting to 60 kmph likely to prevail over Gulf of Mannar & adjoining Comorin area and over few parts of southwest Bay of Bengal & along and off south Sri Lanka coast.

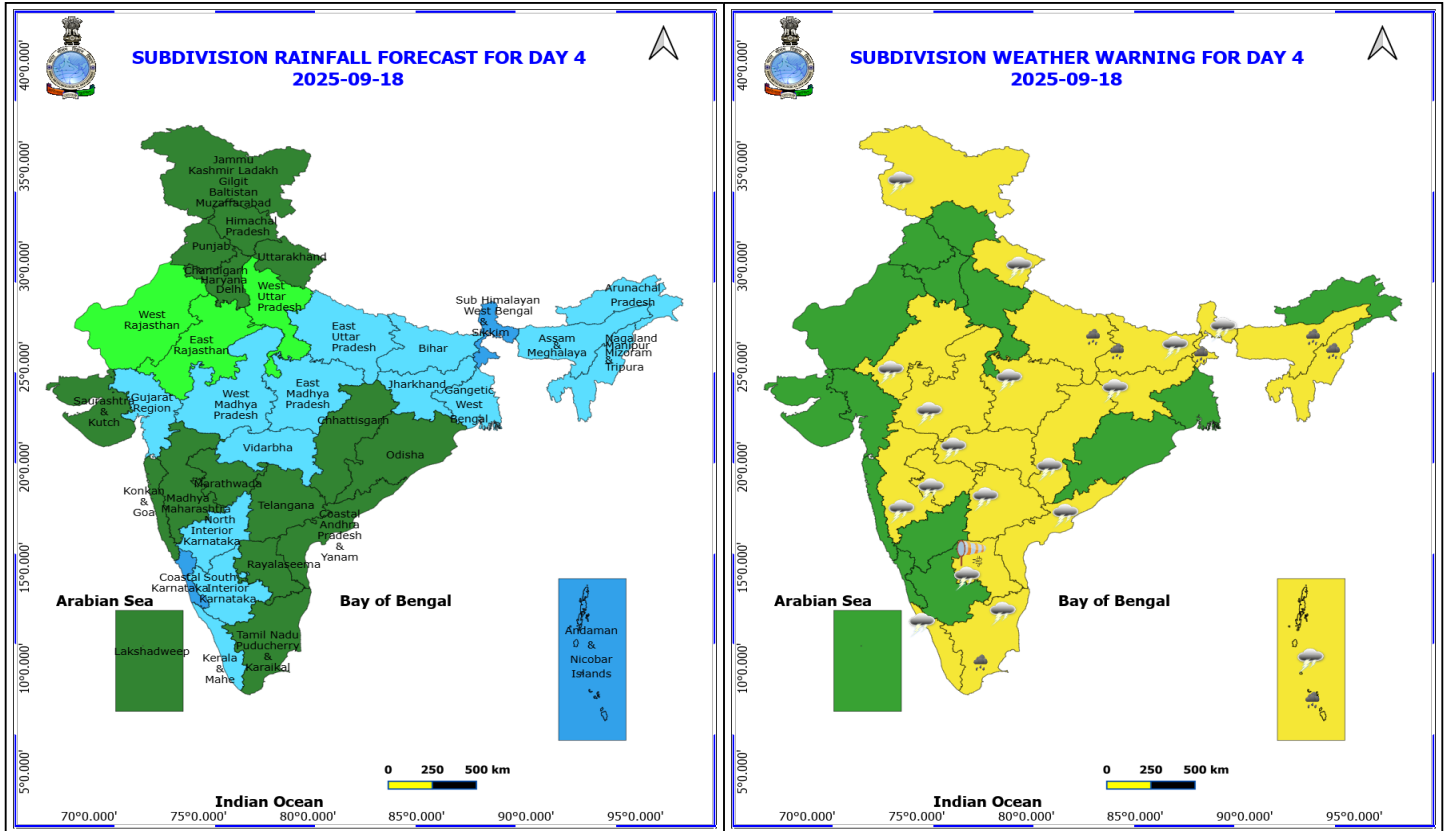
**\*Red color warning does not mean "Red Alert" Red color warning means "Take Action"**  
 Forecast and warning for any day is valid from 0830 hours IST of day till 0830 hours IST of next day  
 For more details kindly visit <https://mausam.imd.gov.in> or contact 011-2434-4599  
 (Service to the nation since 1875)



**17 September (Day 3)**

- ❖ **Heavy Rainfall** very likely at isolated places over Andaman & Nicobar Islands, Arunachal Pradesh, Bihar, East Uttar Pradesh, Jharkhand, Sub Himalayan West Bengal & Sikkim and Tamil Nadu Puducherry & Karaikal.
- ❖ **Thunderstorm accompanied with lightning & gusty winds(30-40kmph)** very likely at isolated places over Coastal Andhra Pradesh and Telangana.
- ❖ **Thunderstorm accompanied with Lightning** very likely at isolated places over Andaman & Nicobar Islands, Bihar, Chhattisgarh, East Rajasthan, Jharkhand, Kerala & Mahe, Madhya Pradesh, Maharashtra, Rayalaseema, Tamil Nadu Puducherry & Karaikal, Uttarakhand and West Bengal & Sikkim.
- ❖ **Strong Surface Winds** very likely at isolated places over Andhra Pradesh.
  - Squally wind with speed reaching 45 kmph to 55 kmph gusting to 65 kmph is likely to prevail over some parts of southwest & westcentral Arabian Sea and along and off Somalia & Oman coasts.
  - Squally weather with wind speed reaching 40 - 50 kmph gusting to 60 kmph likely to prevail over Gulf of Mannar & adjoining Comorin area and over few parts of southwest Bay of Bengal & along and off south Sri Lanka coast.

**\*Red color warning does not mean "Red Alert" Red color warning means "Take Action"**  
 Forecast and warning for any day is valid from 0830 hours IST of day till 0830 hours IST of next day  
 For more details kindly visit <https://mausam.imd.gov.in> or contact 011-2434-4599  
 (Service to the nation since 1875)



### 18 September (Day 4)

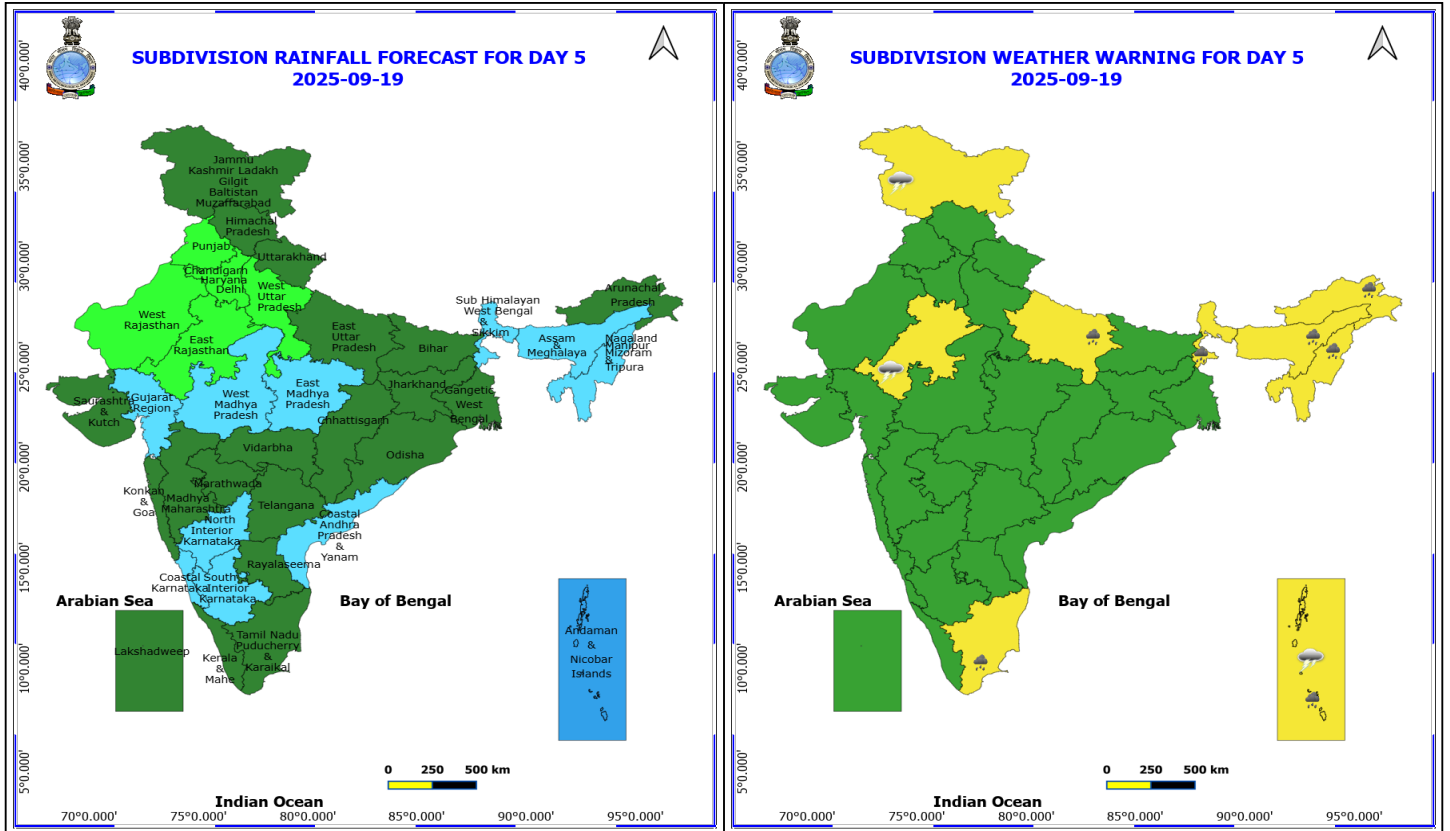
- ❖ **Heavy Rainfall** likely at isolated places over Andaman & Nicobar Islands, Assam & Meghalaya, Bihar, East Uttar Pradesh, Nagaland, Manipur, Mizoram and Tripura, Sub Himalayan West Bengal & Sikkim and Tamil Nadu Puducherry & Karaikal.
- ❖ **Thunderstorm accompanied with lightning & gusty winds(30-40kmph)** likely at isolated places over Coastal Andhra Pradesh, Jammu-Kashmir-Ladakh-Gilgit-Baltistan-Muzaffarabad and Telangana.
- ❖ **Thunderstorm accompanied with Lightning** likely at isolated places over Andaman & Nicobar Islands, Bihar, Chhattisgarh, East Rajasthan, Jharkhand, Kerala & Mahe, Madhya Pradesh, Maharashtra, Rayalaseema, Sub Himalayan West Bengal & Sikkim, Tamil Nadu Puducherry & Karaikal and Uttarakhand.
- ❖ **Strong Surface Winds** likely at isolated places over Rayalaseema.
  - Squally wind with speed reaching 45 kmph to 55 kmph gusting to 65 kmph is likely to prevail over some parts of southwest & westcentral Arabian Sea and along and off Somalia & Oman coasts.
  - Squally weather with wind speed reaching 40 - 50 kmph gusting to 60 kmph likely to prevail over Gulf of Mannar & adjoining Comorin area and over some parts of southwest adjoining southeast Bay of Bengal, along and off south Sri Lanka coast, over Andaman Sea.

**\*Red color warning does not mean "Red Alert" Red color warning means "Take Action"**

**Forecast and warning for any day is valid from 0830 hours IST of day till 0830 hours IST of next day**

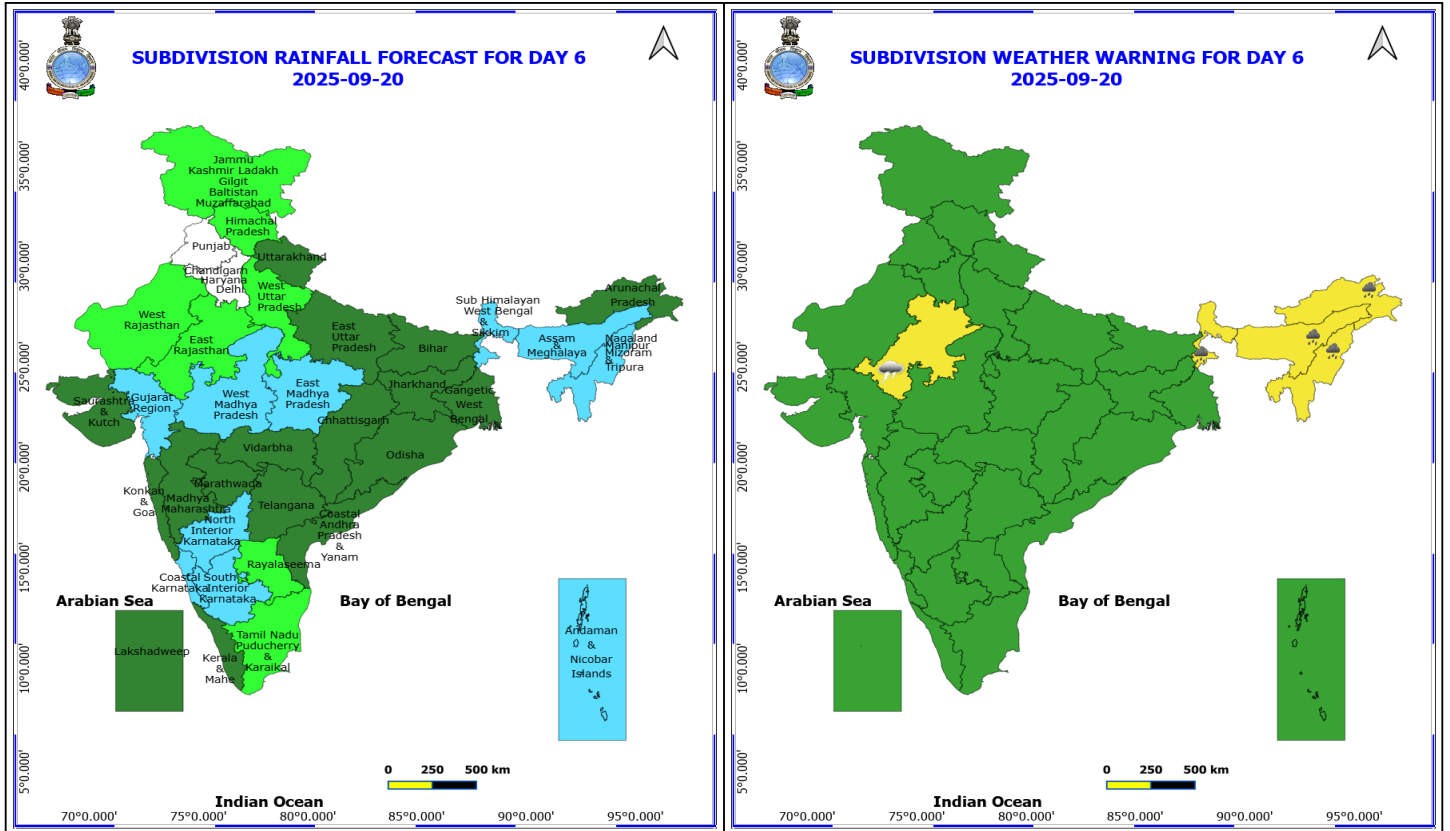
**For more details kindly visit <https://mausam.imd.gov.in> or contact 011-2434-4599**

**(Service to the nation since 1875)**



**19 September (Day 5)**

- ❖ **Heavy Rainfall** likely at isolated places over Andaman & Nicobar Islands, Arunachal Pradesh, Assam & Meghalaya, East Uttar Pradesh, Nagaland, Manipur, Mizoram and Tripura, Sub Himalayan West Bengal & Sikkim and Tamil Nadu Puducherry & Karaikal.
- ❖ **Thunderstorm accompanied with lightning & gusty winds(30-40kmph)** likely at isolated places over Jammu-Kashmir-Ladakh-Gilgit-Baltistan-Muzaffarabad.
- ❖ **Thunderstorm accompanied with Lightning** likely at isolated places over Andaman & Nicobar Islands and East Rajasthan.
  - Squally wind with speed reaching 45 kmph to 55 kmph gusting to 65 kmph is likely to prevail over some parts of southwest & westcentral Arabian Sea and along and off Somalia & Oman coasts.
  - Squally weather with wind speed reaching 40 - 50 kmph gusting to 60 kmph likely to prevail over Gulf of Mannar & adjoining Comorin area and over some parts of southwest adjoining southeast Bay of Bengal, along and off south Sri Lanka coast, over Andaman Sea.



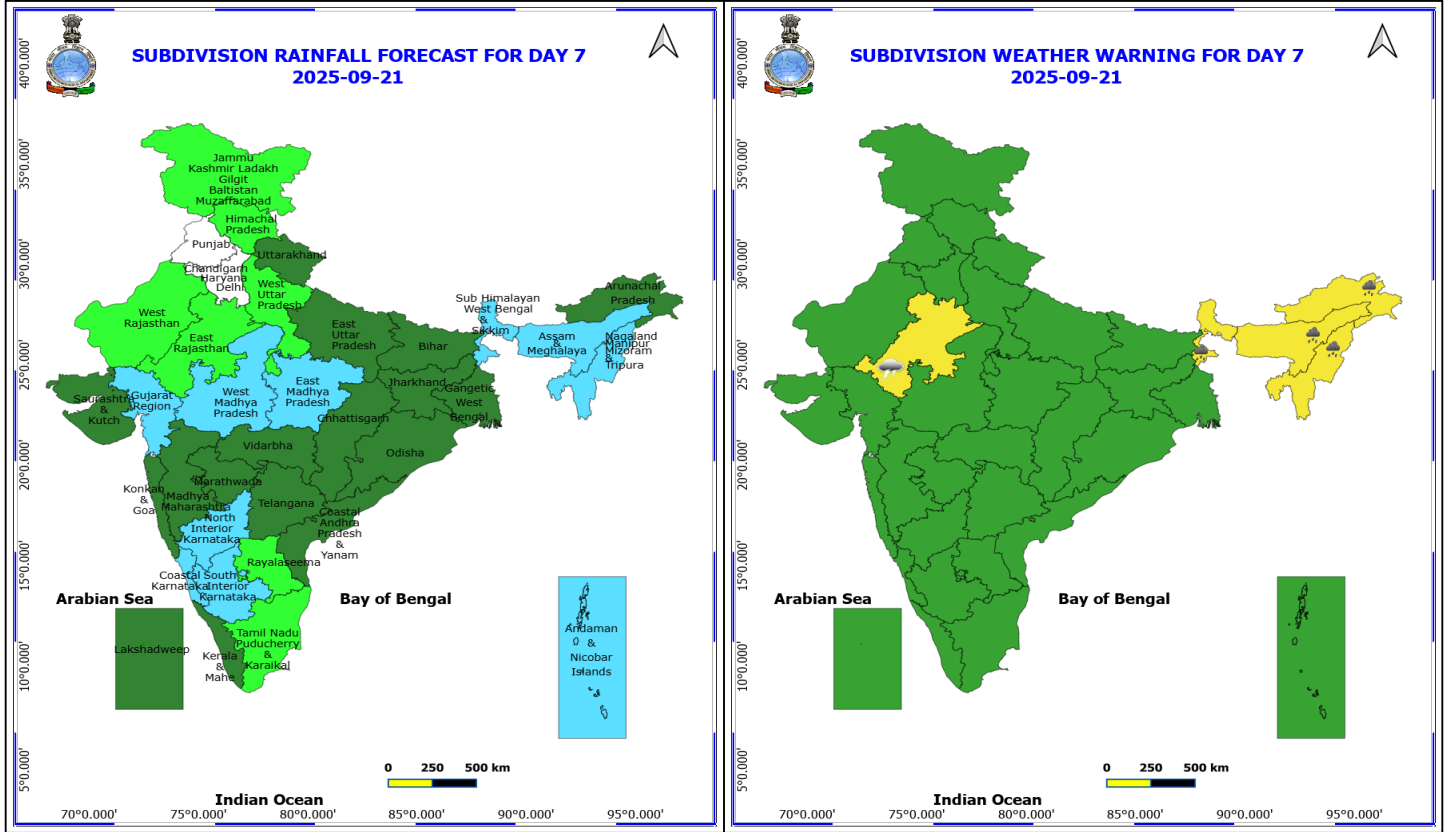
**20 September (Day 6)**

❖ **Heavy Rainfall** likely at isolated places over Arunachal Pradesh, Assam & Meghalaya, Nagaland, Manipur, Mizoram and Tripura and Sub Himalayan West Bengal & Sikkim.

❖ **Thunderstorm accompanied with Lightning** likely at isolated places over East Rajasthan.

**No Fishermen Warning**

\*Red color warning does not mean "Red Alert" Red color warning means "Take Action"  
Forecast and warning for any day is valid from 0830 hours IST of day till 0830 hours IST of next day  
For more details kindly visit <https://mausam.imd.gov.in> or contact 011-2434-4599  
(Service to the nation since 1875)



**21 September (Day 7)**

❖ **Heavy Rainfall** likely at isolated places over Arunachal Pradesh, Assam & Meghalaya, Nagaland, Manipur, Mizoram and Tripura and Sub Himalayan West Bengal & Sikkim.

❖ **Thunderstorm accompanied with Lightning** likely at isolated places over East Rajasthan.

**No Fishermen Warning**

## Flash Flood Warnings

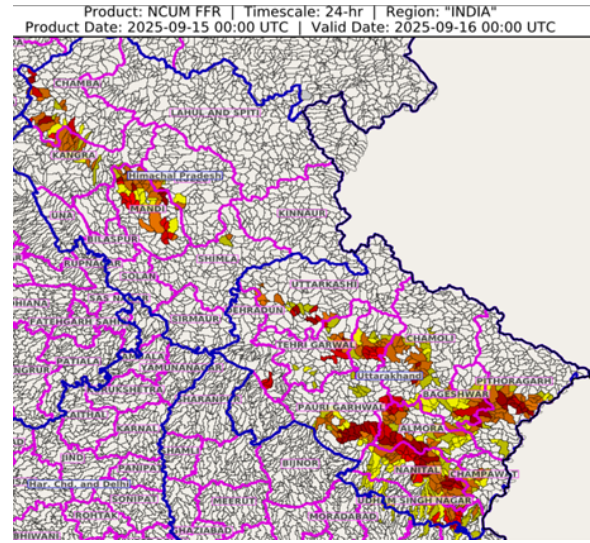
### 24 hours Outlook for the Flash Flood Risk (FFR) till 0530 IST of 16-09-2025:

**Low to Moderate flash flood risk** likely over few watersheds & neighbourhoods of following Met Sub-divisions during next 24 hours.

**Himachal Pradesh** - Chamba, Kangra, Kullu, Mandi and Shimla districts.

**Uttarakhand** - Almora, Bageshwar, Chamoli, Champawat, Dehradun, Nanital, Pauri Garhwal, Pithoragarh, Rudraprayag, Tehri Garwal, Udham Singh Nagar and Uttarkashi districts.

Surface runoff/ Inundation may occur at some fully saturated soils & low-lying areas over Area of Concern (AoC) as shown in map due to expected rainfall occurrence in next 24 hours.



**\*Red color warning does not mean "Red Alert" Red color warning means "Take Action"**

Forecast and warning for any day is valid from 0830 hours IST of day till 0830 hours IST of next day

For more details kindly visit <https://mausam.imd.gov.in> or contact 011-2434-4599

(Service to the nation since 1875)



## Table-1

### 7 Days Rainfall Forecast

S.No.	Subdivision	15-Sep	16-Sep	17-Sep	18-Sep	19-Sep	20-Sep	21-Sep
		Day 1	Day 2	Day 3	Day 4	Day 5	Day 6	Day 7
1	ANDAMAN & NICOBAR ISLANDS	FWS	FWS	WS	WS	WS	FWS	FWS
2	ARUNACHAL PRADESH	WS	WS	FWS	FWS	SCT	SCT	SCT
3	ASSAM & MEHGHALAYA	FWS	FWS	FWS	FWS	FWS	FWS	FWS
4	N. M. M. & T.	FWS	FWS	FWS	FWS	FWS	FWS	FWS
5	S.H. WEST BENGAL & SIKKIM	WS	WS	WS	WS	FWS	FWS	FWS
6	GANGETIC WEST BENGAL	WS	WS	WS	FWS	SCT	SCT	SCT
7	ODISHA	FWS	SCT	SCT	SCT	SCT	SCT	SCT
8	JHARKHAND	WS	WS	WS	FWS	SCT	SCT	SCT
9	BIHAR	FWS	FWS	FWS	FWS	SCT	SCT	SCT
10	EAST UTTAR PRADESH	SCT	FWS	FWS	FWS	SCT	SCT	SCT
11	WEST UTTAR PRADESH	ISOL	SCT	SCT	ISOL	ISOL	ISOL	ISOL
12	UTTARAKHAND	WS	FWS	SCT	SCT	SCT	SCT	SCT
13	HARYANA, CHD & DELHI	ISOL	SCT	SCT	SCT	ISOL	DRY	DRY
14	PUNJAB	ISOL	SCT	SCT	SCT	ISOL	DRY	DRY
15	HIMACHAL PRADESH	SCT	SCT	SCT	SCT	SCT	ISOL	ISOL
16	JAMMU AND KASHMIR AND LADAKH	SCT	SCT	SCT	SCT	SCT	ISOL	ISOL
17	WEST RAJASTHAN	DRY	DRY	DRY	ISOL	ISOL	ISOL	ISOL
18	EAST RAJASTHAN	ISOL	ISOL	ISOL	ISOL	ISOL	ISOL	ISOL
19	WEST MADHYA PRADESH	SCT	FWS	FWS	FWS	FWS	FWS	FWS
20	EAST MADHYA PRADESH	FWS	FWS	FWS	FWS	FWS	FWS	FWS
21	GUJRAT REGION	ISOL	ISOL	SCT	FWS	FWS	FWS	FWS
22	SAURASHTRA & KUTCH	ISOL	ISOL	ISOL	SCT	SCT	SCT	SCT
23	KONKAN & GOA	WS	FWS	FWS	SCT	SCT	SCT	SCT
24	MADHYA MAHARASHTRA	WS	FWS	FWS	SCT	SCT	SCT	SCT
25	MARATHWADA	FWS	SCT	SCT	SCT	SCT	SCT	SCT
26	VIDARBHA	WS	WS	FWS	FWS	SCT	SCT	SCT
27	CHATTISGARH	FWS	FWS	SCT	SCT	SCT	SCT	SCT
28	COASTAL ANDHRA PRADESH	SCT	SCT	SCT	SCT	FWS	SCT	SCT
29	TELANGANA	FWS	FWS	SCT	SCT	SCT	SCT	SCT
30	RAYALASEEMA	ISOL	ISOL	ISOL	SCT	SCT	ISOL	ISOL
31	TAMILNADU & PUDUCHERRY	ISOL	SCT	SCT	SCT	SCT	ISOL	ISOL
32	COSTAL KARNATAKA	FWS	FWS	WS	WS	FWS	FWS	FWS
33	NORTH INTERIOR KARNATAKA	WS	FWS	FWS	FWS	FWS	FWS	FWS
34	SOUTH INTERIOR KARNATAKA	SCT	FWS	FWS	FWS	FWS	FWS	FWS
35	KERALA	FWS	FWS	FWS	FWS	SCT	SCT	SCT
36	LAKSHDWEEP	FWS	SCT	SCT	SCT	SCT	SCT	SCT

Legend	Category	%Stations
WS	Widespread/Most Places	76-100
FWS	Fairly Widespread/Many Places	51-75
SCT	Scattered/ A Few Places	26-50
ISOL	Isolated Places	1-25
DRY	No Rain	0

\*Red color warning does not mean "Red Alert" Red color warning means "Take Action"  
Forecast and warning for any day is valid from 0830 hours IST of day till 0830 hours IST of next day  
For more details kindly visit <https://mausam.imd.gov.in> or contact 011-2434-4599

(Service to the nation since 1875)

Fig. 1: Maximum Temperatures Dated 2025-09-15

Fig. 2: Departure of Maximum Temp. Dated 2025-09-15

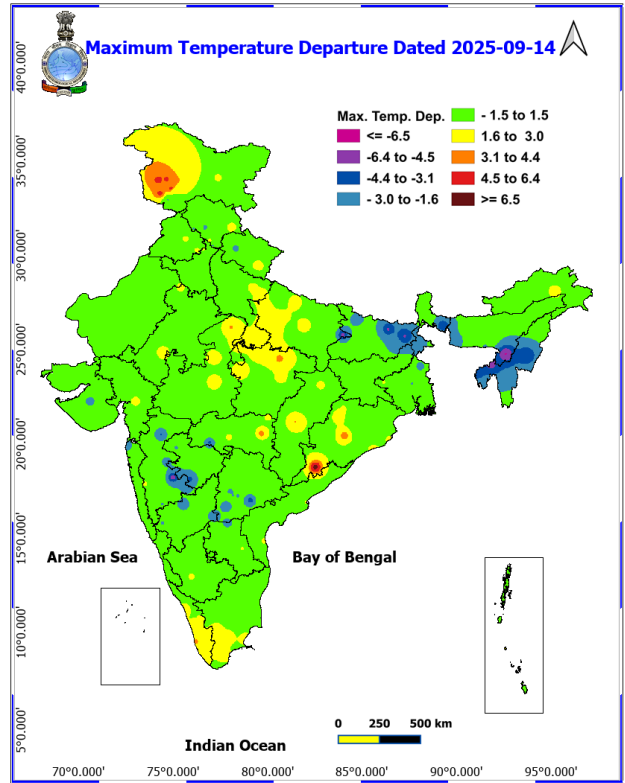
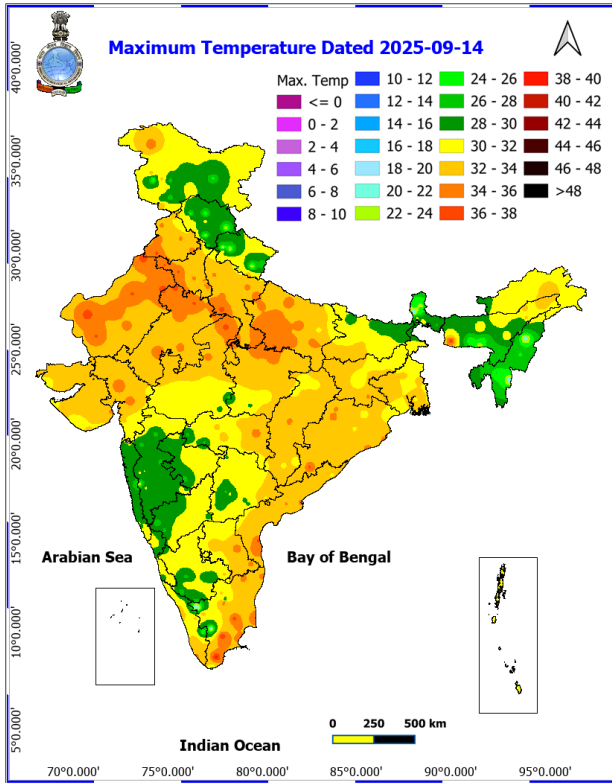
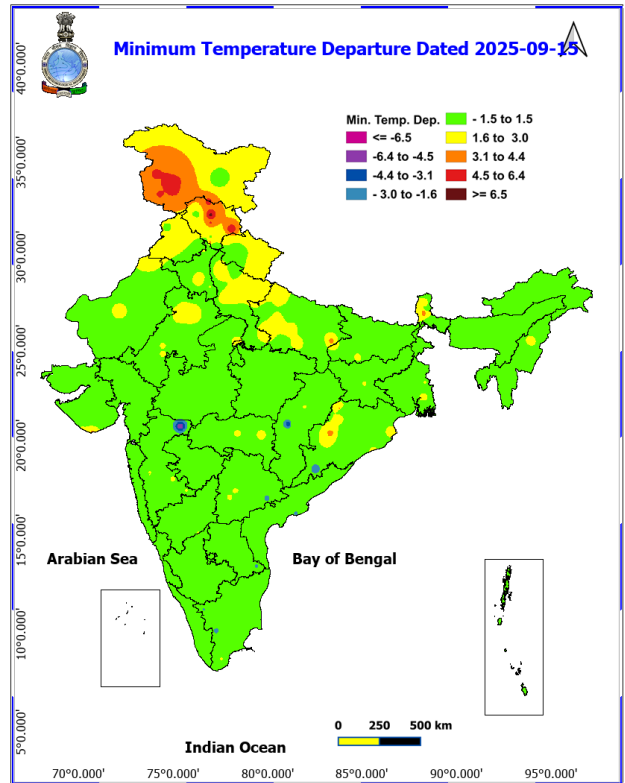
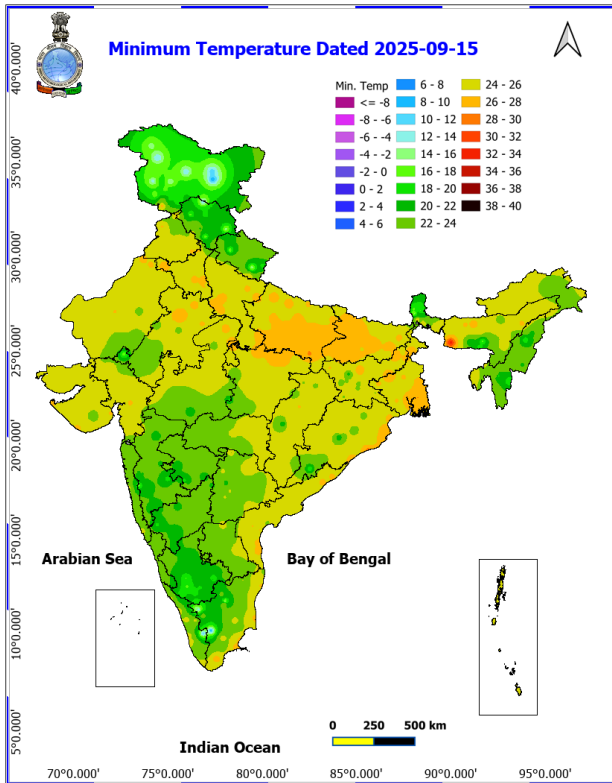


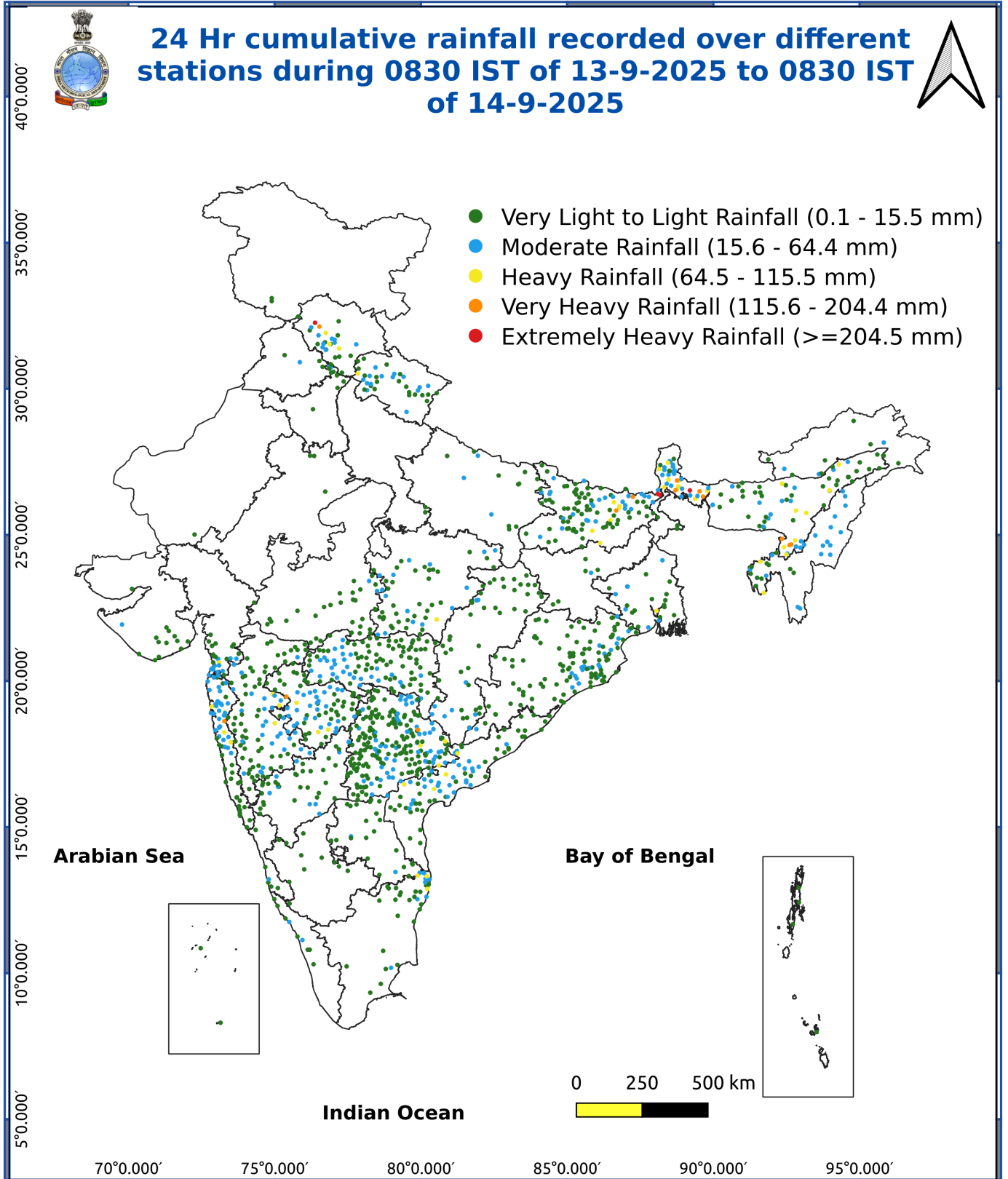
Fig. 3: Minimum Temperatures Dated 2025-09-15

Fig. 4: Departure of Minimum Temp. Dated 2025-09-15



**\*Red color warning does not mean "Red Alert" Red color warning means "Take Action"**  
Forecast and warning for any day is valid from 0830 hours IST of day till 0830 hours IST of next day  
For more details kindly visit <https://mausam.imd.gov.in> or contact 011-2434-4599

(Service to the nation since 1875)



### Impact & Action Suggested due to

**Heavy to very heavy rainfall (12-20 cm)** at isolated places over Arunachal Pradesh, Bihar on 15<sup>th</sup> & 16<sup>th</sup>; Sub-Himalayan West Bengal & Sikkim, Konkan & Goa Madhya, Maharashtra & Marathwada on 15<sup>th</sup> September.

### Impact Expected

- Localized Flooding of roads, water logging in low lying areas and closure of underpasses mainly in urban areas of the above region.
- Occasional reduction in visibility due to heavy rainfall.
- Disruption of traffic in major cities due to water logging in roads leading to increased travel time.
- Minor damage to kutcha roads.
- Possibilities of damage to vulnerable structure.
- Localized Landslides/Mudslides/landslips/mudslips/landsinks/mudsinks.
- Damage to horticulture and standing crops in some areas due to inundation.
- It may lead to riverine flooding in some river catchments (for riverine flooding please visit Web page of CWC)

### Action Suggested

- Check for traffic congestion on your route before leaving for your destination.
- Follow any traffic advisories that are issued in this regard.
- Avoid going to areas that face the water logging problems often.
- Avoid staying in vulnerable structure.

### Agromet advisories for various parts of the country

#### Agromet advisories for likely impact of Heavy / Heavy to Very Heavy Rainfall

(Based on the IBF and advisories issued by different AMFUs)

- In **Sub-Himalayan West Bengal**, make provision to drain out excess water from *aman* paddy and vegetable fields (chilli, bitter gourd, pointed gourd, okra, brinjal etc.) in **Terai Zone** and black gram, finger millet, ginger, dalley khorsani, vegetables and fruit orchards in **Hill Zone**.
- In **Bihar**, ensure proper drainage of excess rainwater from standing crops such as maize, finger millet and vegetables in **North East Alluvial Zone**.
- In **Arunachal Pradesh**, immediately harvest matured crops of *Jhum* rice, soybean, finger millet, foxtail millet, vegetables, matured bunches of banana and matured fruits of apple and kiwi and shift the harvested produce to properly covered shelter. Maintain proper drainage in standing crops such as rice, soybean, finger millet, vegetables and fruit orchards to avoid water stagnation. Avoid fresh sowing of French bean during heavy rainfall and ensure proper drainage in already sown crop.
- In **Assam**, ensure proper drainage in fields of rice, sugarcane, black gram and sesame in **Hill Zone**. In **Lower Brahmaputra Valley Zone**, ensure proper drainage system in *Sali* rice fields and nursery bed of vegetables. Cover the nursery bed with thin polythene to avoid the damages due to heavy rainfall. In **Barak Valley Zone**, postpone the sowing of green gram and black gram and provide adequate drainage facilities in fields of rice, vegetables and already sown green gram and black gram. In **Upper Brahmaputra Valley Zone**, harvest the matured vegetables and fruits and transfer it to a safer location and make arrangements to drain out excess water from the standing crop fields.
- In **Meghalaya**, maintain proper drainage in ginger and vegetable fields and fruit orchards. Provide support to tall and fragile crops like banana, papaya, pumpkin, etc. to prevent lodging.
- In **Nagaland**, undertake harvesting of matured *Jhum* rice, pods of sesame and Naga King chilli and store the harvested produce in safe places. Maintain 3-5cm stagnate water in rice fields.
- In **Uttarakhand**, ensure proper drainage in the fields of green gram, black gram, soybean, barnyard millet and finger millet in **Sub Humid Sub Tropic Zone**. In **Bhabar and Tarai Zone**, maintain proper drainage in fields of rice, pigeon pea, black gram, green gram, finger millet, maize and soybean. Avoid sowing of potato and radish

\*Red color warning does not mean "Red Alert" Red color warning means "Take Action"

Forecast and warning for any day is valid from 0830 hours IST of day till 0830 hours IST of next day

For more details kindly visit <https://mausam.imd.gov.in> or contact 011-2434-4599

(Service to the nation since 1875)

under heavy rainfall conditions and ensure proper drainage in already sown crop. In **Hill Zone**, undertake harvesting of matured crops of barnyard millet, ginger and rainfed rice and keep the harvested produce in safe place. Ensure proper drainage in pigeon pea and vegetable crops.

- In **Himachal Pradesh**, drain out excess water from the fields of rice, maize and vegetables in **Sub-Montane & Low Hills Sub-Tropical Zone** and maize, vegetable fields and fruit orchards in **High Hills Sub Temperate Wet Zone**.
- In **Maharashtra**, immediately harvest matured crops of green gram and black gram in **Madhya Maharashtra** and matured fruits of sapota and custard apple in **Marathwada** and keep the harvested produce at safer places. In **Vidarbha**, store the harvested produce of green gram and black gram at safe places, if storage is not possible cover the harvested produce with plastic or tarpaulin sheets. Make arrangements to drain out excess water from fields of vegetables and fruit orchards in **Konkan**; rice, sugarcane, pigeon pea, soybean, maize, vegetables and fruit orchards in **Madhya Maharashtra**; sugarcane, sorghum, soybean, turmeric, vegetables and fruit orchards in **Marathwada**; pigeon pea, cotton, soybean, maize, vegetables and fruit orchards in **Vidarbha**.
- In **Telangana**, ensure adequate drainage facilities to drain out excess rain water in fields of rice, maize, cotton, soybean, pigeon pea, turmeric and vegetables.

### Livestock / Fishery

- Keep the animals inside the shed during heavy rainfall and provide them balanced feed.
- Store feed and fodder in a safe place to prevent spoilage.
- Construct an outlet with proper netting around the ponds to drain out excess water, thereby preventing fish from escaping in case of overflow.

### Agromet advisories for likely impact of Thunderstorm / Gusty Winds / Squally Winds

- Provide mechanical support to horticultural crops and staking or support to vegetables and young fruit plants / fruit-bearing plants to avoid lodging due to strong winds.

### Legends & abbreviations:

#### Region wise classification of meteorological Sub-Divisions:

- **Northwest India:** Western Himalayan Region (Jammu-Kashmir-Ladakh-Gilgit-Baltistan-Muzaffarabad, Himachal Pradesh and Uttarakhand); Punjab, Haryana-Chandigarh-Delhi; West Uttar Pradesh, East Uttar Pradesh, West Rajasthan and East Rajasthan.
- **Central India:** West Madhya Pradesh, East Madhya Pradesh, Vidarbha and Chhattisgarh.
- **East India:** Bihar, Jharkhand, Sub-Himalayan West Bengal & Sikkim; Gangetic West Bengal, Odisha and Andaman & Nicobar Islands.
- **Northeast India:** Arunachal Pradesh, Assam & Meghalaya and Nagaland, Manipur, Mizoram & Tripura.
- **West India:** Gujarat Region, Saurashtra & Kutch, Konkan & Goa, Madhya Maharashtra and Marathwada.
- **South India:** Coastal Andhra Pradesh & Yanam, Telangana, Rayalaseema, Coastal Karnataka, North Interior Karnataka, South Interior Karnataka, Kerala & Mahe, Tamil Nadu, Puducherry & Karaikal and Lakshadweep.

## LEGENDS

- 1 अंडमान और निकोबार द्वीप समुह
- 2 अरुणाचल प्रदेश
- 3 असम और मेघालय
- 4 नागालैंड मनीपुर मीजोरम और त्रिपुरा
- 5 उप हिमालय पश्चिम बंगाल एवं सिक्किम
- 6 पश्चिम बंगाल
- 7 ओडिसा
- 8 झारखंड
- 9 बिहार
- 10 पूर्वी उत्तर प्रदेश
- 11 पश्चिम उत्तर प्रदेश
- 12 उत्तराखंड
- 13 हरियाणा चंडिगढ़ एवं दिल्ली
- 14 पंजाब
- 15 हिमाचल प्रदेश
- 16 जम्मू एवं कश्मीर एवं लद्दाख
- 17 पश्चिम राजस्थान
- 18 पूर्वी राजस्थान
- 19 पश्चिम मध्य प्रदेश
- 20 पूर्वी मध्य प्रदेश
- 21 गुजरात क्षेत्र
- 22 सौराष्ट्र एवं कच्छ
- 23 कोंकण एवं गोवा
- 24 मध्य महाराष्ट्र
- 25 मराठावाडा
- 26 विदर्भ
- 27 छत्तीसगढ़
- 28 तटीय आंध्र प्रदेश एवं यनम
- 29 तेलंगाना
- 30 रायलसीमा
- 31 तमिलनाडु, पुदुचेरी एवं कराईकल
- 32 तटिय कर्नाटक
- 33 आंतरिक उत्तरी कर्नाटक
- 34 आंतरिक दक्षिणी कर्नाटक
- 35 केरल एवं माहे
- 36 लक्षद्वीप



1. Andaman & Nicobar Islands
2. Arunachal Pradesh
3. Assam & Meghalaya
4. Nagaland, Manipur, Mizoram & Tripura
5. Sub-Himalayan West Bengal & Sikkim
6. Gangetic West Bengal
7. Orissa
8. Jharkhand
9. Bihar
10. East Uttar Pradesh
11. West Uttar Pradesh
12. Uttarakhand
13. Haryana, Chd & Delhi
14. Punjab
15. Himachal Pradesh
16. Jammu & Kashmir and Ladakh
17. West Rajasthan
18. East Rajasthan
19. West Madhya Pradesh
20. East Madhya Pradesh
21. Gujarat
22. Saurashtra
23. Konkan & Goa
24. Madhya Maharashtra
25. Marathawada
26. Vidharbha
27. Chhattisgarh
28. Coastal Andhra Pradesh & Yanam
29. Telangana
30. Rayalaseema
31. Tamilnadu, Puducherry & Karaikal
32. Coastal Karnataka
33. North Interior Karnataka
34. South Interior Karnataka
35. Kerala & Mahe
36. Lakshadweep

## SPATIAL DISTRIBUTION (% of Stations reporting)

% Stations	Category	% Stations	Category
76-100	Widespread (WS/ Most Places)	26-50	Scattered (SCT/ A Few Places)
51-75	Fairly Widespread (FWS/ Many Places)	1-25	Isolated (ISOL)

### Subdivision Colour

- NO WARNING
- WATCH (BE UPDATED)
- ALERT (BE PREPARED TO TAKE ACTION)
- WARNING (TAKE ACTION)

### Probabilistic Forecast

Terms	Probability of Occurrence (%)
Unlikely	< 25
Likely	25 - 50
Very Likely	50 - 75
Most Likely	> 75

- |                          |                 |                      |                    |
|--------------------------|-----------------|----------------------|--------------------|
| Heavy Rain               | Very Heavy Rain | Extremely Heavy Rain | Heavy Snow         |
| Thunderstorm & Lightning | Hailstorm       | Dust Storm           | Dust Raising Winds |
| Strong surface winds     | Heat Wave       | Hot Day              | Warm Night         |
| Cold Wave                | Cold Day        | Ground Frost         | Fog                |
| Hot & Humid              |                 |                      |                    |

\*Red color warning does not mean "Red Alert" Red color warning means "Take Action"

Forecast and warning for any day is valid from 0830 hours IST of day till 0830 hours IST of next day

For more details kindly visit <https://mausam.imd.gov.in> or contact 011-2434-4599

(Service to the nation since 1875)

## LEGENDS

### WARNING

WARNING (TAKE ACTION)
ALERT ( BE PREPARED)
WATCH (BE UPDATED)
NO WARNING ( NO ACTION)

### Probabilistic Forecast

Terms	Probability of Occurrence (%)
Unlikely	< 25
Likely	25 - 50
Very Likely	50 - 75
Most Likely	> 75



Heavy: 64.5 to 115.5 mm/cm \*  
Very Heavy: 115.6 to 204.4 mm/cm\*  
Extremely Heavy: > 204.4 mm/cm \*



When maximum temperature of a station reaches  $\geq 40^{\circ}\text{C}$  for plains and  $\geq 30^{\circ}\text{C}$  for hilly regions  
(a) Based on Departure from normal

Heat Wave: Maximum Temperature Departure from normal  $4.5^{\circ}\text{C}$  to  $6.4^{\circ}\text{C}$ .  
Severe Heat Wave: Maximum Temperature Departure from normal  $\geq 6.5^{\circ}\text{C}$

(b). Based on Actual maximum temperature

Heat Wave: When actual maximum temperature  $\geq 45^{\circ}\text{C}$ .  
Severe Heat Wave: When actual maximum temperature  $\geq 47^{\circ}\text{C}$

(c). Criteria for heat wave for coastal stations

When maximum temperature departure is  $> 4.5^{\circ}\text{C}$  from normal. Heat Wave may be described provided maximum temperature  $\geq 37^{\circ}\text{C}$



When maximum temperature remains  $40^{\circ}\text{C}$

Warm Night: When minimum temperature departure  $4.5^{\circ}\text{C}$  to  $6.4^{\circ}\text{C}$ .  
Severe Warm Night: When minimum temperature departure  $> 6.4^{\circ}\text{C}$ .



When minimum temperature of a station  $\leq 10^{\circ}\text{C}$  for plains and  $\leq 0^{\circ}\text{C}$  for hilly regions.

(a). Based on departure

Cold Wave: Minimum Temperature Departure from normal  $-4.5^{\circ}\text{C}$  to  $-6.4^{\circ}\text{C}$ .  
Severe Cold Wave: Minimum Temperature Departure from normal  $\leq -6.5^{\circ}\text{C}$

(b) Based on actual Minimum Temperature (for Plains only)

Cold Wave : When Minimum Temperature is  $\leq 4.0^{\circ}\text{C}$   
Severe Cold Wave: When Minimum Temperature is  $\leq 2.0^{\circ}\text{C}$

(c) For Coastal Stations

When Minimum Temperature departure is  $\leq -4.5^{\circ}\text{C}$  & actual Minimum Temperature is  $\leq 15^{\circ}\text{C}$



When minimum temperature of a station  $\leq 10^{\circ}\text{C}$  for plains and  $\leq 0^{\circ}\text{C}$  for hilly regions  
Based on departure

Cold Day: Maximum Temperature Departure from normal  $-4.5^{\circ}\text{C}$  to  $-6.4^{\circ}\text{C}$ .  
Severe Cold Day: Maximum Temperature Departure from normal  $\leq -6.5^{\circ}\text{C}$



Phenomenon of small droplets suspended in air and the horizontal visibility  $< 1\text{km}$

Moderate Fog: When the visibility between 500-200 metres  
Dense Fog: when the visibility between 50- 200 metres  
Very Dense Fog: when the visibility  $< 50$  metres



Sudden electrical discharges manifested by a flash of light (Lightning) and a sharp rumbling sound (thunder)



An ensemble of particles of dust or sand energetically lifted to great heights by a strong and turbulent wind.



Ice deposits on ground

Air temperature  $\leq 4^{\circ}\text{C}$  ( over Plains)



A strong wind that rises suddenly, lasts for atleast 1 minute.

Moderate: Wind speed 52-61 kmph  
Severe: Wind speed 62-87 kmph  
Very Severe: Wind speed  $> 87$  kmph



Effect of various waves in the sea over specific area

Rough to very rough: Wind speed 41-62 kmph (22-33 knots) & Wave height 2.5-6 metre  
High to very high: Wind speed 63-117 kmph ( 34-63 knots) & Wave height 6-14 metre  
Phenomenal: Wind speed  $> 117$  kmph ( $> 63$  knots) & Wave height  $> 14$  metre



Cyclonic Storm: Wind speed 62-87 kmph (34-47 knots)  
Severe Cyclonic Storm: Wind speed 88-117 kmph (48-63 knots)  
Very Severe Cyclonic Storm: Wind speed 118-165 kmph (64 - 89 knots)  
Extremely Severe Cyclonic Storm: Wind speed 166-220 kmph (90 -119 knots)  
Super Cyclone Storm: Wind speed  $> 220$  kmph ( $> 119$  knots)

\*Red color warning does not mean "Red Alert" Red color warning means "Take Action"

Forecast and warning for any day is valid from 0830 hours IST of day till 0830 hours IST of next day

For more details kindly visit <https://mausam.imd.gov.in> or contact 011-2434-4599

(Service to the nation since 1875)