

2025-06-19

Time of Issue: 08:30:00 hours IST  
(Morning)

## ALL INDIA WEATHER SUMMARY AND FORECAST BULLETIN

### Significant Weather Features

#### Weather Forecast and Warnings

##### East & Central India:

- ♦ Light/moderate rainfall at most/many places accompanied with **thunderstorm, lightning & gusty winds speed reaching 40-50 kmph** likely over Andaman & Nicobar Islands on 19<sup>th</sup>; Madhya Pradesh, Vidarbha, Chhattisgarh, Gangetic West Bengal, Bihar, Jharkhand, Odisha during 19<sup>th</sup>-22<sup>nd</sup> with **Thundersquall (wind speed reaching 50-60 kmph gusting to 70 kmph)** very likely at isolated places over Madhya Pradesh on 19<sup>th</sup> June.
- ♦ Isolated **heavy rainfall** also likely over Sub-Himalayan West Bengal & Sikkim during 19<sup>th</sup>, 22<sup>nd</sup> & 23<sup>rd</sup>, Gangetic West Bengal during 23<sup>rd</sup>-25<sup>th</sup>, Bihar, Jharkhand, Odisha during 19<sup>th</sup>-22<sup>nd</sup>, Madhya Pradesh during 19<sup>th</sup>-23<sup>rd</sup> June with **very heavy rainfall** over Bihar, Gangetic West Bengal, Odisha on 19<sup>th</sup>, Jharkhand on 20<sup>th</sup>, East Madhya Pradesh during 20<sup>th</sup>-23<sup>rd</sup>, West Madhya Pradesh on 22<sup>nd</sup> & 23<sup>rd</sup> and over Chhattisgarh on 19<sup>th</sup> & 20<sup>th</sup> June.
- ♦ June.  
**Extremely heavy rainfall (>20 cm/24 hours) likely at isolated places over Jharkhand on 19<sup>th</sup> June.**

##### West India:

- ♦
- ♦ Light/moderate rainfall at most/many places likely over Gujarat State, Konkan & Goa, Madhya Maharashtra, Marathwada during 19<sup>th</sup>-25<sup>th</sup> June.
- ♦ Isolated **heavy rainfall** likely over Konkan & Goa, Madhya Maharashtra, Gujarat Region during 19<sup>th</sup>-25<sup>th</sup>; Saurashtra & Kutch on 19<sup>th</sup> and during 22<sup>nd</sup>-25<sup>th</sup> with **very heavy rainfall** on Konkan & Goa, Madhya Maharashtra on 19<sup>th</sup> June.

##### South Peninsular India:

- ♦
- ♦ Light/moderate rainfall at many/some places accompanied with isolated **thunderstorm, lightning** over Tamil Nadu, Puducherry & Karaikal, Kerala & Mahe, Lakshadweep, Karnataka on 19<sup>th</sup>; Coastal Andhra Pradesh & Yanam, Rayalaseema, Telangana on 19<sup>th</sup> & 20<sup>th</sup> June.
- ♦ Isolated **heavy rainfall** likely over Kerala & Mahe on 19<sup>th</sup> & 22<sup>nd</sup>, Coastal Karnataka during 23<sup>rd</sup>-25<sup>th</sup> June.  
**Strong surface winds** (speed reaching 40-60 kmph) very likely over Kerala & Mahe, Lakshadweep, Karnataka on 19<sup>th</sup>, Coastal Andhra Pradesh & Yanam, Rayalaseema during 19<sup>th</sup> -21<sup>st</sup> June.

##### Northeast India:

- ♦
- ♦ Light/moderate rainfall at many/most places accompanied with **thunderstorm, lightning and isolated heavy to very heavy rainfall** likely to continue over Northeast India during next 7 days.

##### Northwest India:

- ♦
- ♦ Light/moderate rainfall at some/many places accompanied with accompanied with **thunderstorm, lightning & gusty winds speed reaching 40-50 kmph** likely over Northwest India during 19<sup>th</sup>-25<sup>th</sup> June.
- ♦ Isolated **heavy rainfall** likely over Uttarakhand, Uttar Pradesh, East Rajasthan during 19<sup>th</sup>-25<sup>th</sup>; Himachal Pradesh, Jammu-Kashmir-Ladakh-Gilgit-Baltistan-Muzaffarabad on 22<sup>nd</sup>, Haryana, Chandigarh during 20<sup>th</sup>-23<sup>rd</sup> with **very heavy rainfall** on East Rajasthan on 19<sup>th</sup>, 22<sup>nd</sup> & 23<sup>rd</sup>, Uttar Pradesh during 19<sup>th</sup>-22<sup>nd</sup>, Uttarakhand during 21<sup>st</sup>-23<sup>rd</sup>, Himachal Pradesh on 22<sup>nd</sup> & 23<sup>rd</sup> June.

##### Maximum Temperature Forecast:

- ♦
- ♦ Fall by 2-3°C in maximum temperatures likely over Central India during next 2 days and no large change thereafter.
- ♦ No significant change in maximum temperatures likely over rest parts of the country.

**\*Red color warning does not mean "Red Alert" Red color warning means "Take Action"**  
Forecast and warning for any day is valid from 0830 hours IST of day till 0830 hours IST of next day  
For more details kindly visit <https://mausam.imd.gov.in> or contact 011-2434-4599

(Service to the nation since 1875)



**Hot & Humid Conditions warnings:**

- ♦ **Hot & Humid conditions** very likely in isolated pockets of Tamil Nadu on 19<sup>th</sup>, Coastal Andhra Pradesh & Yanam, Rayalaseema during 19<sup>th</sup>-22<sup>nd</sup> June.

### Main Weather Observations:

❖ **Significant rainfall recorded (in cm)** (from 0830 hours IST of yesterday to 0530 hours IST of today): **Jharkhand:** Jamshedpur AP (dist East Singhbhum) 23, Ranchi AP (dist Ranchi) 14, Daltonganj (dist Palamu) 11; **Konkan & Goa:** Mumbai (colaba) (dist ) 12, Ratnagiri (dist Ratnagiri) 8, Mumbai (santacruz) AP (dist ) 5; **Andaman & Nicobar Islands:** Port Blair (dist South Andaman) 7; **Saurashtra & Kutch:** Veraval (dist Gir Somnath) 7; **Gujarat Region:** Ahmedabad (dist Ahmedabad) 7, Baroda AP (dist Vadodara) 2; **Madhya Maharashtra:** Nashik (dist Nashik) 6, Pune- Shivajinagar (dist Pune) 1; **Bihar:** Gaya (dist Gaya) 6, Bhagalpur (dist Bhagalpur) 1; **West Madhya Pradesh:** Gwalior (dist Gwalior) 3; **Odisha:** Keonjhar (dist Kendujhar) 2, Balasore (dist Balasore), Jharsuguda (dist Jharsuguda) 1 Each; **Chhattisgarh:** Ambikapur (dist Surguja) 2, Pendra Road (dist Gaurella-pendra-marwahi) 1; **Tamilnadu Puducherry & Karaikal:** Salem (dist Salem) 2; **Sub-Himalayan West Bengal & Sikkim:** Malda (dist Malda) 2, Bagdogra AP (dist Darjeeling) 1; **Assam & Meghalaya:** Guwahati (dist Kamrup Metropolitan) 2, Shillong (dist East Khasi Hills) 1; **West Uttar Pradesh:** Bareilly (dist Bareilly) 1; **Kerala & Mahe:** Kozhikode (calicut) (dist Kozhikode) 1; **Himachal Pradesh:** Sundernagar (dist Mandi) 1; **Jammu & Kashmir and Ladakh:** Baderwah (dist Doda) 1; **Coastal Karnataka:** Mangalore (bajpe) AP (dist Dakshina Kannada) 1; **Gangetic West Bengal:** Kolkata (dum Dum) AP (dist North 24 Parganas), Kolkata-alipur (dist Kolkata) 1 Each.

❖ **Heavy Rainfall observed** (from 0830 hours IST of yesterday to 0530 hours IST of today): **Extremely heavy rain** at isolated places over Jharkhand **Heavy to very heavy rain** at a few places over Jharkhand, at isolated places over Konkan & Goa **Heavy rain** at a few places over Andaman & Nicobar Islands, at isolated places over Gujarat Region and Saurashtra & Kutch

❖ **Minimum Temperature Departures (as on 18-06-2025):** **markedly above normal(> 5.1°C)** at few places over East Madhya Pradesh; at isolated places over Assam & Meghalaya, Sub Himalayan West Bengal & Sikkim, Bihar, West Uttar Pradesh, Himachal Pradesh, West Rajasthan and Saurashtra & Kutch. **appreciably above normal(3.1°C to 5.0°C)** at isolated places over Odisha, East Uttar Pradesh, Jammu-Kashmir-Ladakh-Gilgit-Baltistan-Muzaffarabad, West Madhya Pradesh and Coastal Andhra Pradesh & Yanam. **above normal(1.6°C to 3.0°C)** at few places over Nagaland, Manipur, Mizoram & Tripura, Gujarat Region, Vidarbha and Lakshadweep; at isolated places over Andaman & Nicobar Islands, Gangetic West Bengal, Haryana-Chandigarh-Delhi, Punjab, Konkan & Goa, Madhya Maharashtra, Chhattisgarh, Telangana, Rayalaseema and Tamil Nadu, Puducherry & Karaikal. **near normal(-1.5°C to 1.5°C)** at many places over Jharkhand and Kerala & Mahe; at most places over Arunachal Pradesh, Uttarakhand, Marathwada, Coastal Karnataka, North Interior Karnataka and South Interior Karnataka; at few places over East Rajasthan. **The lowest minimum temperature** of 18.6°C was reported at UNA (HIMACHAL PRADESH) over the Plains of India.

❖ **Maximum Temperature Departures (as on 18-06-2025):** **appreciably above normal(3.1°C to 5.0°C)** at most places over Arunachal Pradesh; at few places over Jammu-Kashmir-Ladakh-Gilgit-Baltistan-Muzaffarabad; at isolated places over Assam & Meghalaya, Odisha, Coastal Andhra Pradesh & Yanam and Tamil Nadu, Puducherry & Karaikal. **above normal(1.6°C to 3.0°C)** at few places over Nagaland, Manipur, Mizoram & Tripura, West Rajasthan and Coastal Karnataka; at isolated places over West Uttar Pradesh, Himachal Pradesh, Konkan & Goa, Vidarbha, Telangana and Rayalaseema. **near normal(-1.5°C to 1.5°C)** at many places over Andaman & Nicobar Islands, Bihar, East Madhya Pradesh, Marathwada and Kerala & Mahe; at most places over Sub Himalayan West Bengal & Sikkim, Uttarakhand, North Interior Karnataka, South Interior Karnataka and Lakshadweep; at few places over East Uttar Pradesh, Punjab and Madhya Maharashtra; at isolated places over Gangetic West Bengal, Haryana-Chandigarh-Delhi, West Madhya Pradesh, Saurashtra & Kutch and Chhattisgarh. **The highest maximum temperature** of 43.2°C was reported at **Jaisalmer\_IAF** (WEST RAJASTHAN).

**\*Red color warning does not mean "Red Alert" Red color warning means "Take Action"**

**Forecast and warning for any day is valid from 0830 hours IST of day till 0830 hours IST of next day**

**For more details kindly visit <https://mausam.imd.gov.in> or contact 011-2434-4599**

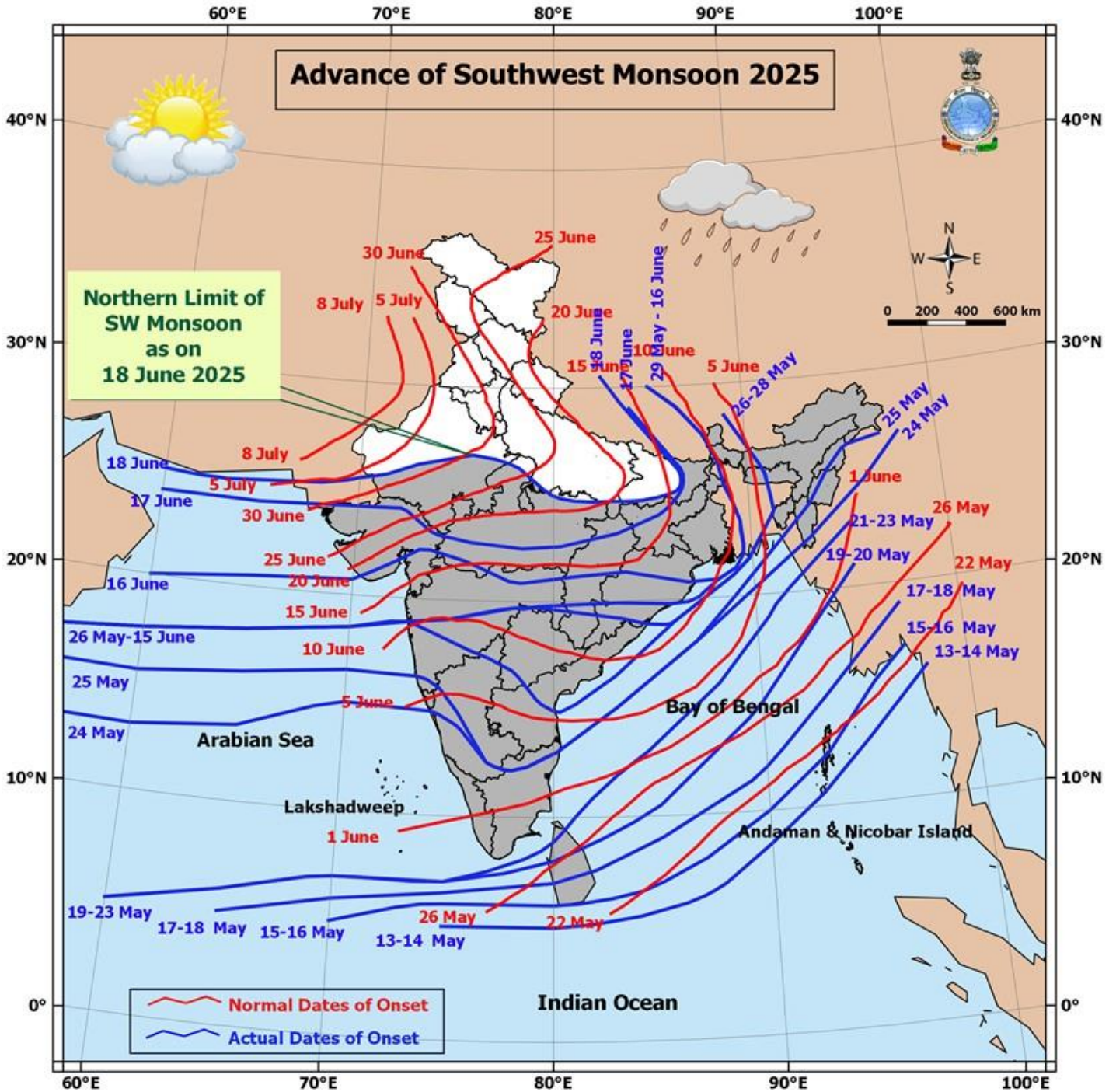
**(Service to the nation since 1875)**

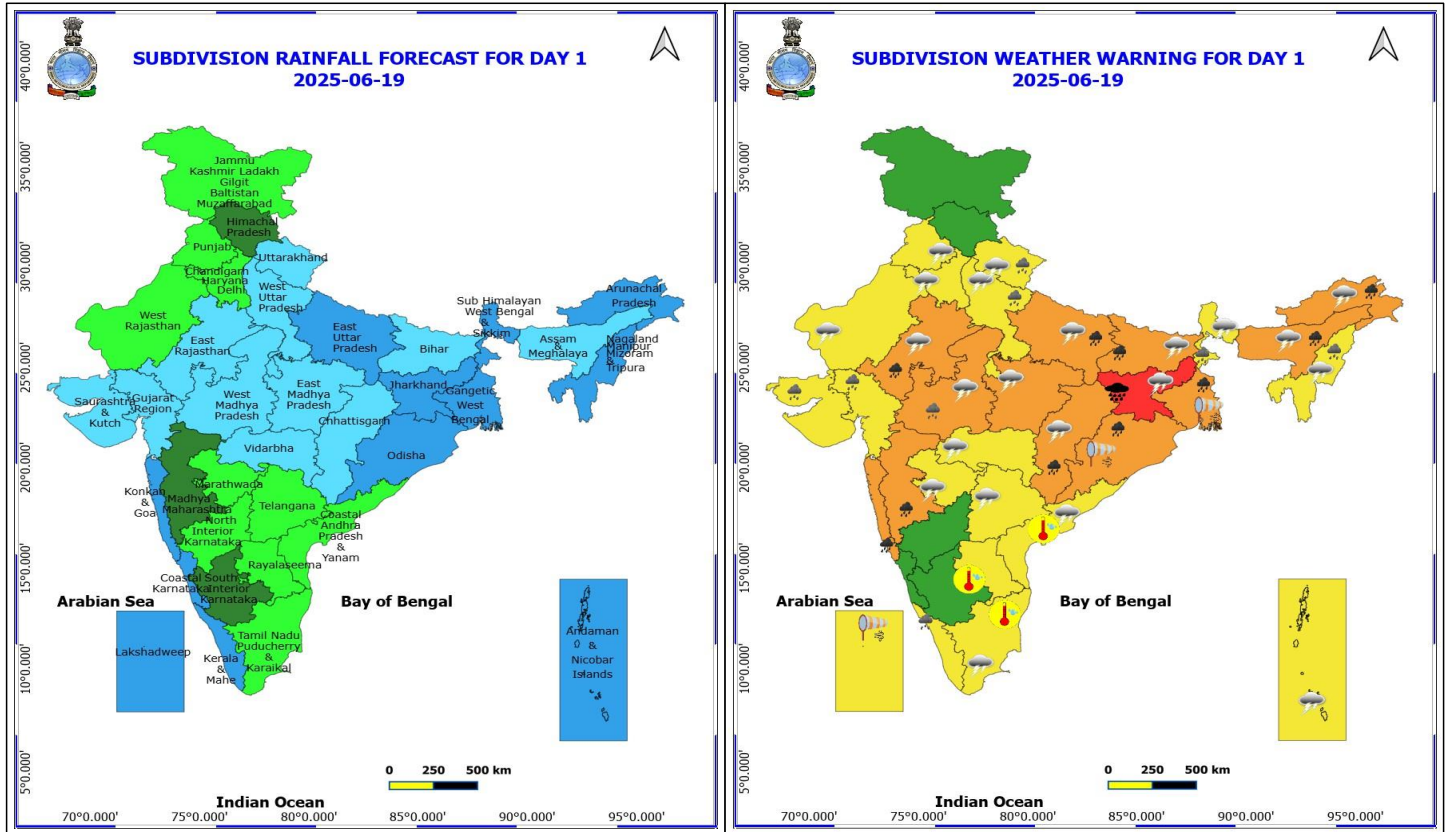
### Meteorological Analysis (Based on 0530 hours IST)

- The Northern Limit of Monsoon continue to pass through 25.0°N/60°E, 25.0°N/65°E, 25.5°N/70°E, Barmer, Jodhpur, Jaipur, Gwalior, Khajuraho, Sonbhadra, Gaya and 30.5°N/82.5°E.
- Conditions are favourable for further advance of Southwest monsoon over remaining parts of North Arabian Sea, some more parts of Rajasthan, remaining parts of Madhya Pradesh, some more parts of Uttar Pradesh and remaining parts of Bihar, some parts of Uttarakhand, Himachal Pradesh, Jammu-Kashmir-Ladakh-Gilgit-Baltistan-Muzaffarabad during next 2-3 days.
- The **well marked low pressure area** over Gangetic West Bengal lay over northeast Jharkhand & adjoining Gangetic West Bengal at 0530 hrs IST of today, the 19<sup>th</sup> June 2025. The associated upper air cyclonic circulation extends upto 7.6 km above mean sea level tilting southwards with height. It is likely to move slowly northwestwards during next 24 hours.
- The **low pressure area** over southwest Rajasthan & neighbourhood become less marked at 0530 hrs IST of today, on 19<sup>th</sup> June 2025. However, the associated upper air cyclonic circulation lay over Southwest Rajasthan and extends upto 1.5 km above mean sea level.
- A cyclonic circulation lies over northeast Rajasthan & neighbourhood and extends upto 4.6 km above mean sea level.
- **The trough** now runs from northwest Uttar Pradesh to northeast Gujarat region across the above cyclonic circulation over northeast Rajasthan & neighbourhood at 3.1 km above mean sea level.
- The **Western Disturbance** now lies as a trough in middle tropospheric westerlies with its axis at 5.8 km above mean sea level runs roughly along Long. 76°E to the north of Lat. 30°N.
- The **upper air** cyclonic circulation over central parts of Uttar Pradesh & neighbourhood between 3.1 & 5.8 km above mean sea level has become less marked.

### Weather Outlook for subsequent 3 days

- ◆ Fairly widespread to widespread rainfall activity likely over Northeast, East, Northwest, Central and West India, Costal Andhra Pradesh, North Interior Karnataka, Costal Karnataka, Kerala & Mahe, Telangana and Lakshadweep.
- ◆ Isolated to scattered rainfall likely over Tamil Nadu, Rayalaseema and South Interior Karnataka.





**19 June (Day 1)**

- ❖ **Heavy to Very Heavy Rainfall with isolated Extremely Heavy Rainfall** very likely at isolated places over Jharkhand.
- ❖ **Heavy to Very Heavy Rainfall** very likely at isolated places over Arunachal Pradesh, Assam & Meghalaya, Bihar, Chhattisgarh, East Rajasthan, East Uttar Pradesh, Gangetic West Bengal, Konkan & Goa, Madhya Maharashtra and Odisha.
- ❖ **Heavy Rainfall** very likely at isolated places over Gujarat State, Kerala & Mahe, Nagaland, Manipur, Mizoram and Tripura, Sub Himalayan West Bengal & Sikkim, Uttarakhand, West Madhya Pradesh and West Uttar Pradesh.
- ❖ **Thundersquall with wind speed reaching(50-60kmph)** very likely at isolated places over Madhya Pradesh.
- ❖ **Thunderstorm accompanied with lightning & gusty winds(40-50kmph)** very likely at isolated places over Andaman & Nicobar Islands, Bihar, Coastal Andhra Pradesh, Rajasthan, Uttar Pradesh and Uttarakhand.
- ❖ **Thunderstorm accompanied with lightning & gusty winds(30-40kmph)** very likely at isolated places over Haryana, Chandigarh & Delhi, Jharkhand, Nagaland, Manipur, Mizoram and Tripura, Punjab, Sub Himalayan West Bengal & Sikkim and Telangana.
- ❖ **Thunderstorm accompanied with Lightning** very likely at isolated places over Arunachal Pradesh, Assam & Meghalaya, Chhattisgarh, Marathwada, Tamil Nadu Puducherry & Karaikal and Vidarbha.
- ❖ **Strong Surface Winds** very likely at isolated places over Gangetic West Bengal, Lakshadweep and Odisha.
- ❖ **Hot and Humid weather** very likely at isolated places over Andhra Pradesh and Tamil Nadu Puducherry & Karaikal.

**\*Red color warning does not mean "Red Alert" Red color warning means "Take Action"**

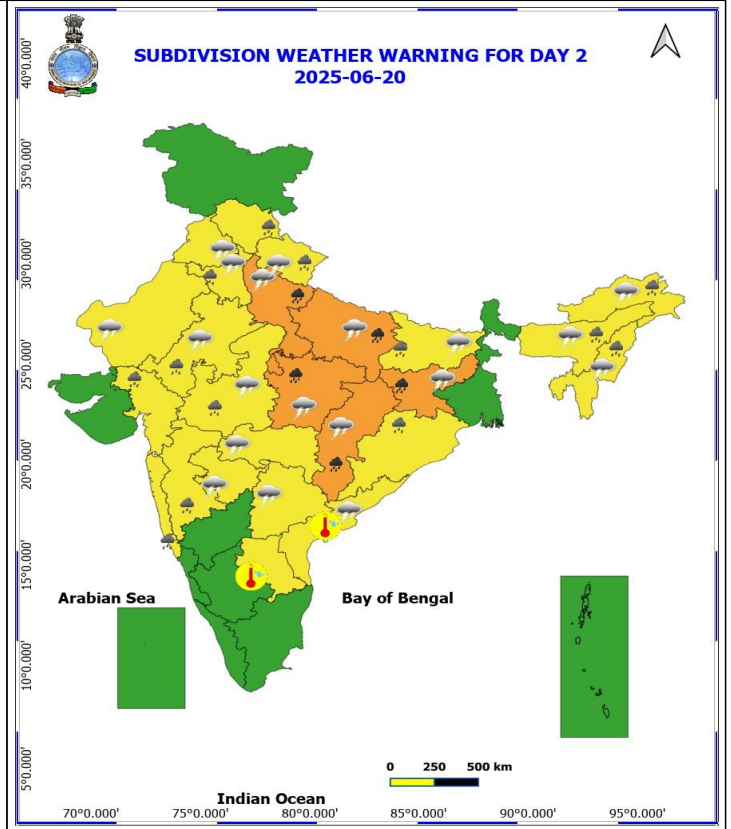
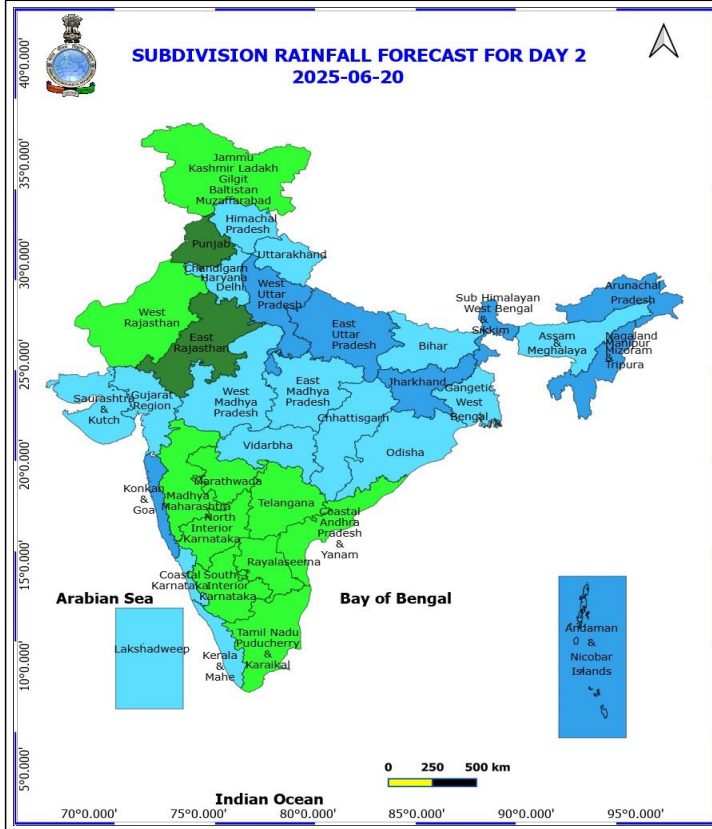
**Forecast and warning for any day is valid from 0830 hours IST of day till 0830 hours IST of next day**

**For more details kindly visit <https://mausam.imd.gov.in> or contact 011-2434-4599**

**(Service to the nation since 1875)**



❖ **Squally wind with speed 45 kmph to 55 kmph gusting to 65 kmph** likely to prevail along and off Somalia coast, along and off Oman & adjoining Yemen coasts, most parts of westcentral Arabian Sea & adjoining, some parts of eastcentral Arabian Sea, northern parts of southwest Arabian Sea, many parts of northwest Arabian Sea, adjoining northeast Arabian Sea. **Squally weather with wind speed 40 - 50 kmph gusting to 60 kmph** likely to prevail along and off north Gujarat, Konkan, Goa, Karnataka, Andhra Pradesh, Odisha, West Bengal coasts, over northern parts of southwest Arabian Sea and adjoining parts of southeast Arabian Sea, most parts of central and northeast Arabian Sea, over most parts of central and north Bay of Bengal. **Squally weather with wind speed 45 - 55 kmph gusting to 65 kmph** likely to prevail over many parts of eastcentral Arabian Sea & adjoining, some parts of westcentral Arabian Sea, along and off north Andhra Pradesh coast and adjoining westcentral Bay of Bengal.

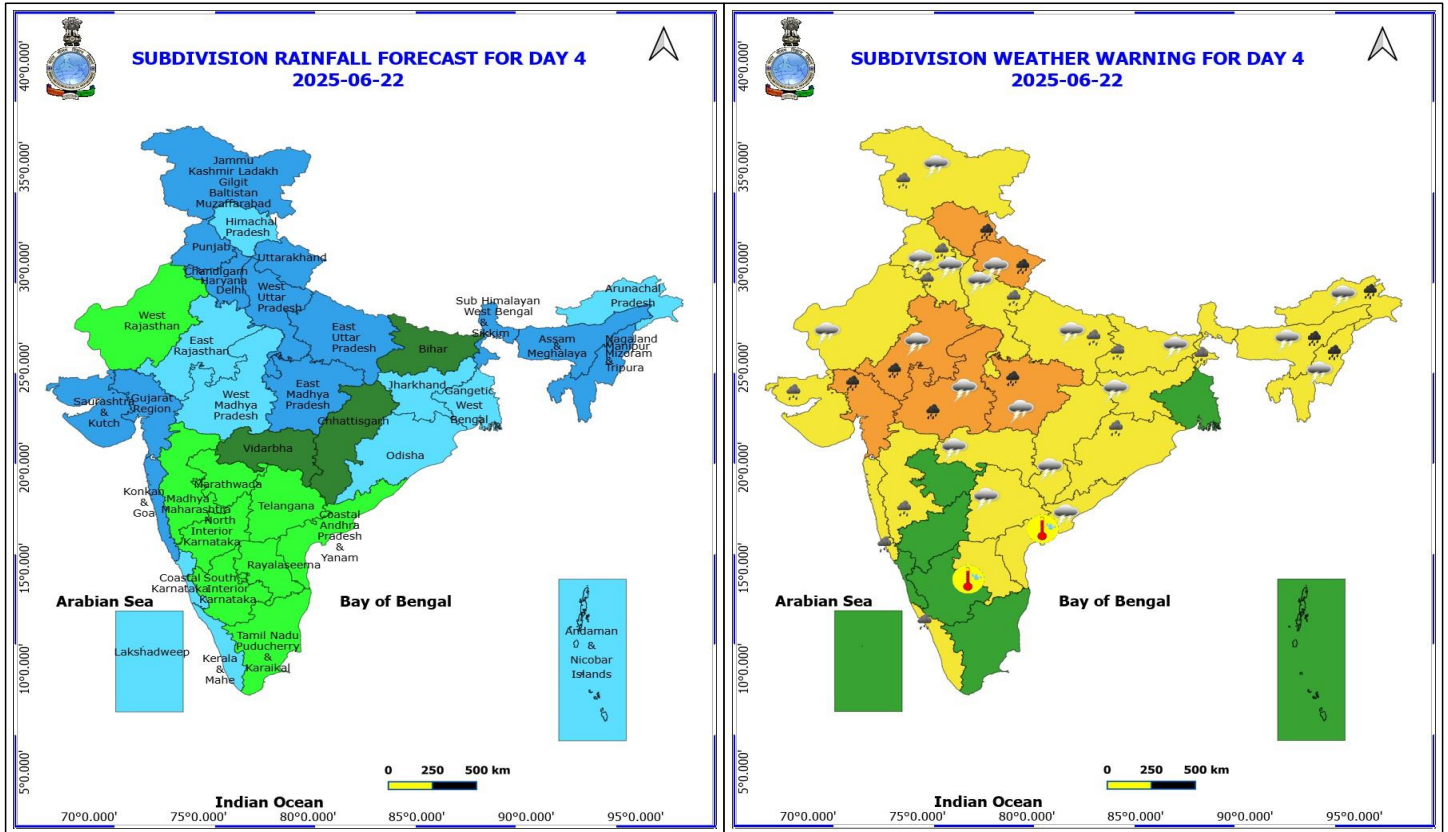


## 20 June (Day 2)

- ❖ **Heavy to Very Heavy Rainfall** very likely at isolated places over Chhattisgarh, East Madhya Pradesh, Jharkhand and Uttar Pradesh.
- ❖ **Heavy Rainfall** very likely at isolated places over Arunachal Pradesh, Assam & Meghalaya, Bihar, East Rajasthan, Gujarat Region, Haryana, Chandigarh & Delhi, Himachal Pradesh, Konkan & Goa, Madhya Maharashtra, Nagaland, Manipur, Mizoram and Tripura, Odisha, Uttarakhand and West Madhya Pradesh.
- ❖ **Thundersquall with wind speed reaching(50-60kmph)** very likely at isolated places over East Madhya Pradesh.
- ❖ **Thunderstorm accompanied with lightning & gusty winds(40-50kmph)** very likely at isolated places over Bihar, Coastal Andhra Pradesh, Rajasthan, Uttar Pradesh, Uttarakhand and West Madhya Pradesh.
- ❖ **Thunderstorm accompanied with lightning & gusty winds(30-40kmph)** very likely at isolated places over Haryana, Chandigarh & Delhi, Nagaland, Manipur, Mizoram and Tripura, Punjab and Telangana.
- ❖ **Thunderstorm accompanied with Lightning** very likely at isolated places over Arunachal Pradesh, Assam & Meghalaya, Chhattisgarh, Jharkhand, Marathwada and Vidarbha.
- ❖ **Hot and Humid weather** very likely at isolated places over Andhra Pradesh.

## No Fishermen Warning





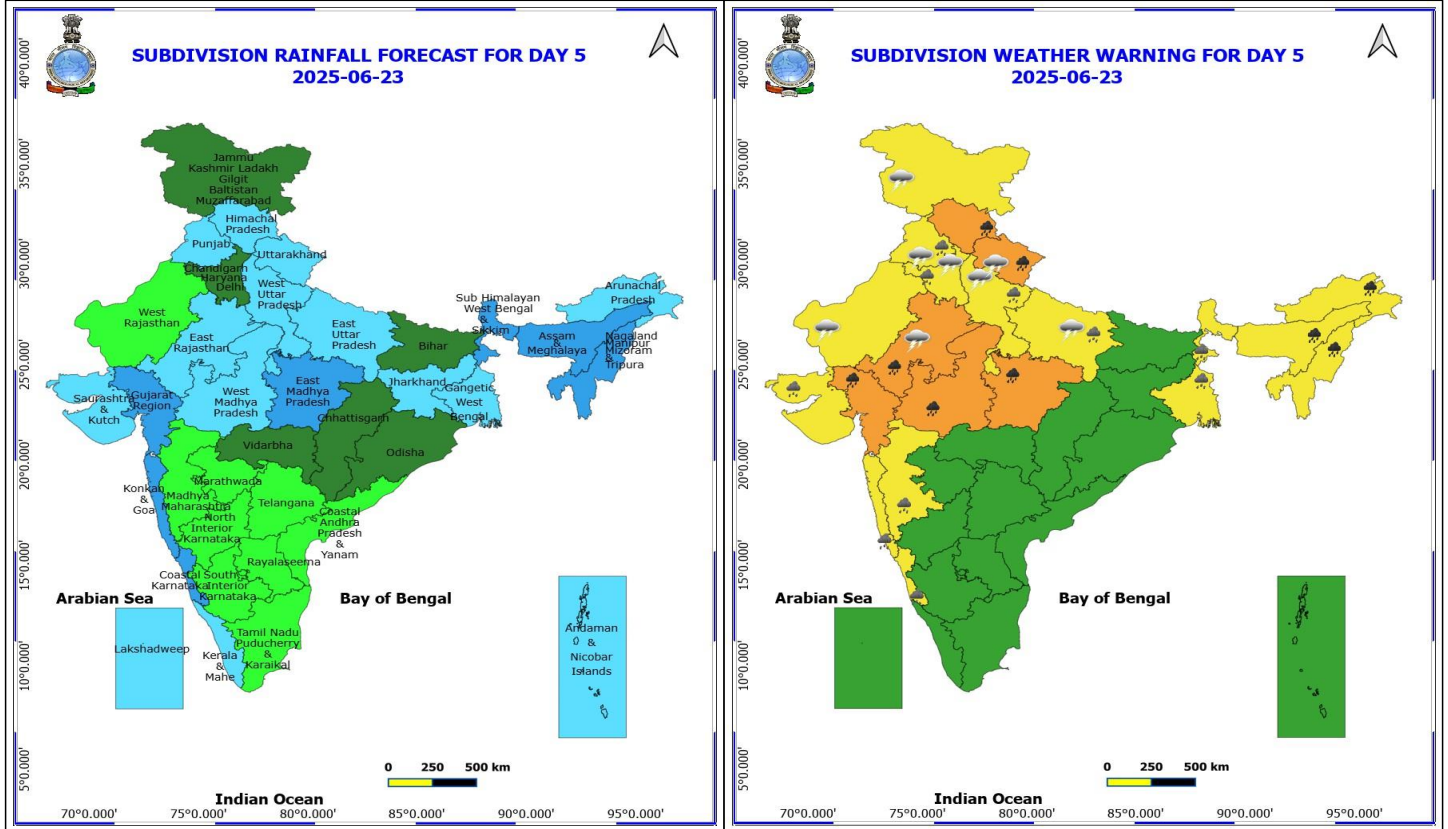
## 22 June (Day 4)

- ❖ **Heavy to Very Heavy Rainfall** likely at isolated places over Arunachal Pradesh, Assam & Meghalaya, East Rajasthan, Gujarat Region, Himachal Pradesh, Madhya Pradesh, Nagaland, Manipur, Mizoram and Tripura and Uttarakhand.
- ❖ **Heavy Rainfall** likely at isolated places over Bihar, Haryana, Chandigarh & Delhi, Jammu-Kashmir-Ladakh-Gilgit-Baltistan-Muzaffarabad, Kerala & Mahe, Konkan & Goa, Madhya Maharashtra, Odisha, Punjab, Saurashtra & Kutch, Sub Himalayan West Bengal & Sikkim and Uttar Pradesh.
- ❖ **Thunderstorm accompanied with lightning & gusty winds(40-50kmph)** likely at isolated places over Bihar, Coastal Andhra Pradesh, Madhya Pradesh, Rajasthan, Uttar Pradesh and Uttarakhand.
- ❖ **Thunderstorm accompanied with lightning & gusty winds(30-40kmph)** likely at isolated places over Jammu-Kashmir-Ladakh-Gilgit-Baltistan-Muzaffarabad and Telangana.
- ❖ **Thunderstorm accompanied with Lightning** likely at isolated places over Arunachal Pradesh, Assam & Meghalaya, Chhattisgarh, Haryana, Chandigarh & Delhi, Jharkhand, Nagaland, Manipur, Mizoram and Tripura, Punjab and Vidarbha.
- ❖ **Hot and Humid weather** likely at isolated places over Andhra Pradesh.

**No Fishermen Warning**

**\*Red color warning does not mean "Red Alert" Red color warning means "Take Action"**  
Forecast and warning for any day is valid from 0830 hours IST of day till 0830 hours IST of next day  
For more details kindly visit <https://mausam.imd.gov.in> or contact 011-2434-4599

(Service to the nation since 1875)



### 23 June (Day 5)

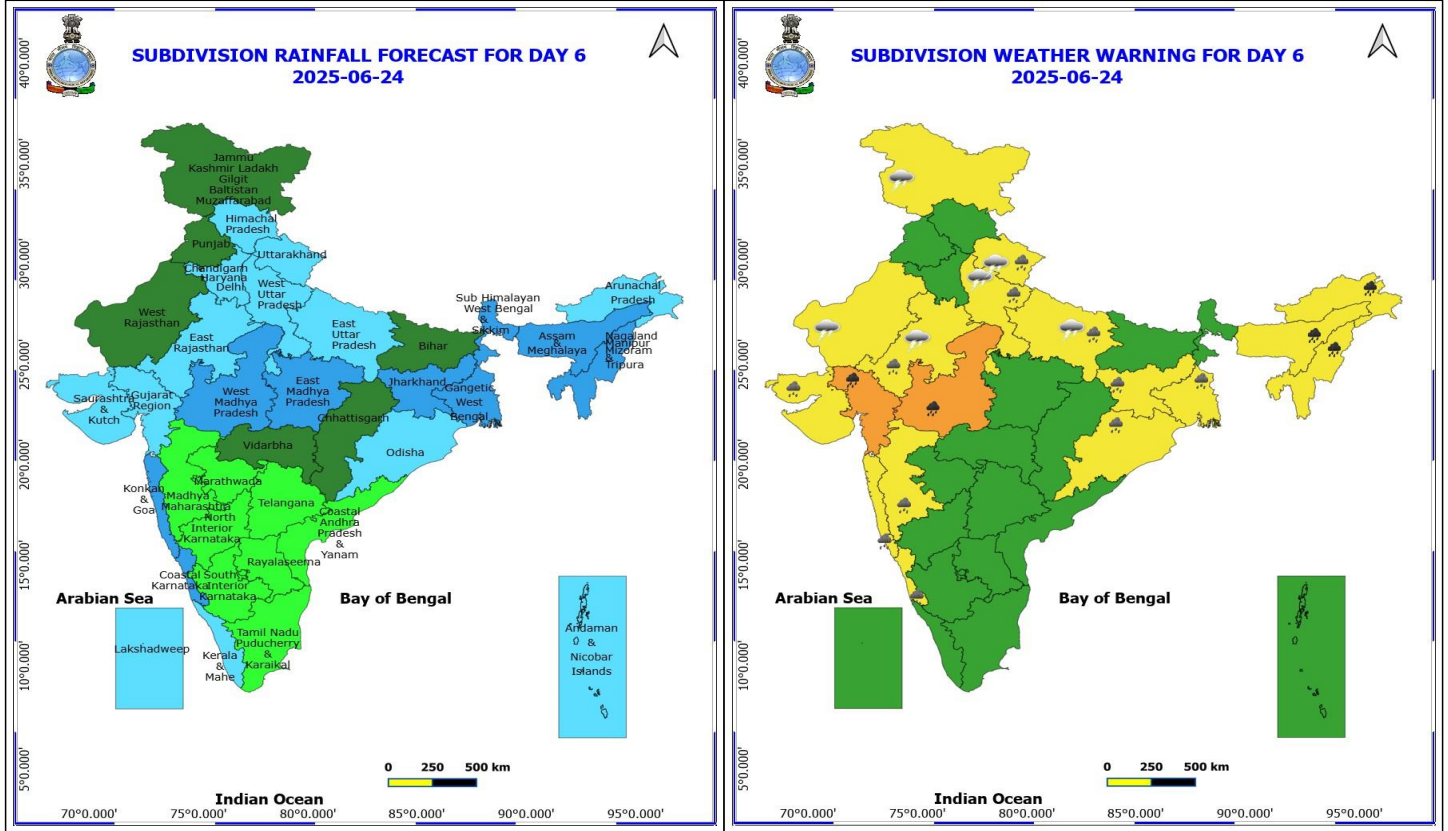
- ❖ **Heavy to Very Heavy Rainfall** likely at isolated places over Arunachal Pradesh, Assam & Meghalaya, East Rajasthan, Gujarat Region, Himachal Pradesh, Madhya Pradesh, Nagaland, Manipur, Mizoram and Tripura and Uttarakhand.
  - ❖ **Heavy Rainfall** likely at isolated places over Coastal Karnataka, Haryana, Chandigarh & Delhi, Konkan & Goa, Madhya Maharashtra, Punjab, Saurashtra & Kutch, Uttar Pradesh and West Bengal & Sikkim.
  - ❖ **Thunderstorm accompanied with lightning & gusty winds(40-50kmph)** likely at isolated places over Rajasthan, Uttar Pradesh and Uttarakhand.
  - ❖ **Thunderstorm accompanied with lightning & gusty winds(30-40kmph)** likely at isolated places over Jammu-Kashmir-Ladakh-Gilgit-Baltistan-Muzaffarabad.
  - ❖ **Thunderstorm accompanied with Lightning** likely at isolated places over Haryana, Chandigarh & Delhi and Punjab.
- No Fishermen Warning**

**\*Red color warning does not mean "Red Alert" Red color warning means "Take Action"**

Forecast and warning for any day is valid from 0830 hours IST of day till 0830 hours IST of next day

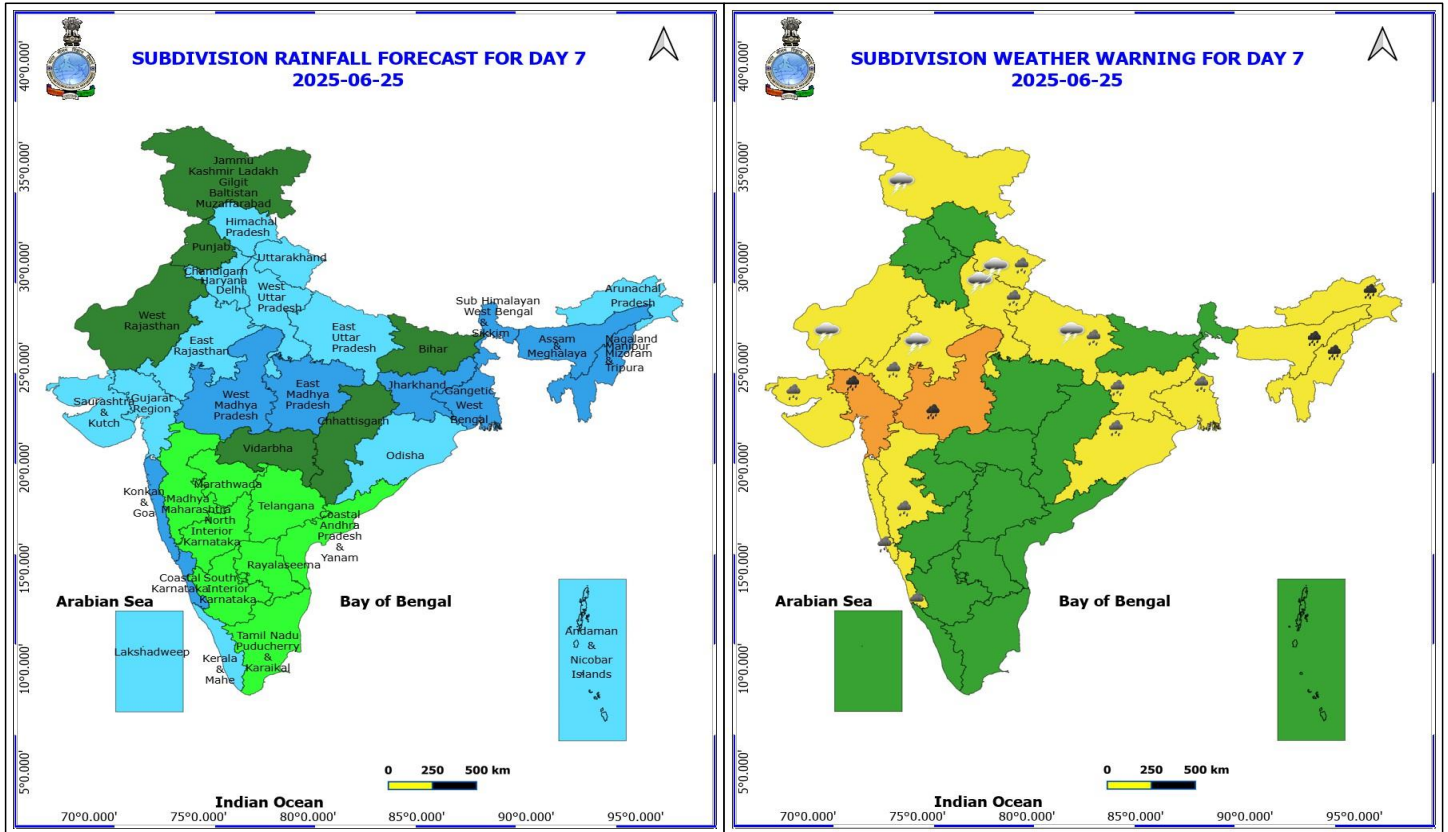
For more details kindly visit <https://mausam.imd.gov.in> or contact 011-2434-4599

(Service to the nation since 1875)



**24 June (Day 6)**

- ❖ **Heavy to Very Heavy Rainfall** likely at isolated places over Arunachal Pradesh, Assam & Meghalaya, Gujarat Region, Nagaland, Manipur, Mizoram and Tripura and West Madhya Pradesh.
  - ❖ **Heavy Rainfall** likely at isolated places over Coastal Karnataka, East Rajasthan, Gangetic West Bengal, Jharkhand, Konkanata & Goa, Madhya Maharashtra, Odisha, Saurashtra & Kutch, Uttar Pradesh and Uttarakhand.
  - ❖ **Thunderstorm accompanied with lightning & gusty winds(40-50kmph)** likely at isolated places over Rajasthan, Uttar Pradesh and Uttarakhand.
  - ❖ **Thunderstorm accompanied with lightning & gusty winds(30-40kmph)** likely at isolated places over Jammu-Kashmir-Ladakh-Gilgit-Baltistan-Muzaffarabad.
- No Fishermen Warning**



## 25 June (Day 7)

- ❖ **Heavy to Very Heavy Rainfall** likely at isolated places over Arunachal Pradesh, Assam & Meghalaya, East Rajasthan, Gujarat Region, Himachal Pradesh, Madhya Pradesh, Nagaland, Manipur, Mizoram and Tripura and Uttarakhand.
  - ❖ **Heavy Rainfall** likely at isolated places over Coastal Karnataka, Haryana, Chandigarh & Delhi, Konkan & Goa, Madhya Maharashtra, Punjab, Saurashtra & Kutch, Uttar Pradesh and West Bengal & Sikkim.
  - ❖ **Thunderstorm accompanied with lightning & gusty winds(40-50kmph)** likely at isolated places over Rajasthan, Uttar Pradesh and Uttarakhand.
  - ❖ **Thunderstorm accompanied with lightning & gusty winds(30-40kmph)** likely at isolated places over Jammu-Kashmir-Ladakh-Gilgit-Baltistan-Muzaffarabad.
  - ❖ **Thunderstorm accompanied with Lightning** likely at isolated places over Haryana, Chandigarh & Delhi and Punjab.
- No Fishermen Warning**

**\*Red color warning does not mean "Red Alert" Red color warning means "Take Action"**

Forecast and warning for any day is valid from 0830 hours IST of day till 0830 hours IST of next day

For more details kindly visit <https://mausam.imd.gov.in> or contact 011-2434-4599

(Service to the nation since 1875)



## Table-1

### 7 Days Rainfall Forecast

S.No.	Subdivision	19-Jun	20-Jun	21-Jun	22-Jun	23-Jun	24-Jun	25-Jun
		Day 1	Day 2	Day 3	Day 4	Day 5	Day 6	Day 7
1	ANDAMAN & NICOBAR ISLANDS	WS	WS	FWS	FWS	FWS	FWS	FWS
2	ARUNACHAL PRADESH	WS	WS	FWS	FWS	FWS	FWS	FWS
3	ASSAM & MEHGHALAYA	FWS	FWS	WS	WS	WS	WS	WS
4	N. M. M. & T.	WS	WS	WS	WS	WS	WS	WS
5	S.H. WEST BENGAL & SIKKIM	WS	WS	WS	WS	WS	WS	WS
6	GANGETIC WEST BENGAL	WS	FWS	FWS	FWS	FWS	WS	WS
7	ODISHA	WS	FWS	FWS	FWS	SCT	FWS	FWS
8	JHARKHAND	WS	WS	WS	FWS	FWS	WS	WS
9	BIHAR	FWS	FWS	FWS	SCT	SCT	SCT	SCT
10	EAST UTTAR PRADESH	WS	WS	WS	WS	FWS	FWS	FWS
11	WEST UTTAR PRADESH	FWS	WS	WS	WS	FWS	FWS	FWS
12	UTTARAKHAND	FWS	FWS	FWS	WS	FWS	FWS	FWS
13	HARYANA, CHD & DELHI	ISOL	FWS	WS	WS	SCT	FWS	FWS
14	PUNJAB	ISOL	SCT	FWS	WS	FWS	SCT	SCT
15	HIMACHAL PRADESH	SCT	FWS	FWS	FWS	FWS	FWS	FWS
16	JAMMU AND KASHMIR AND LADAKH	ISOL	ISOL	FWS	WS	SCT	SCT	SCT
17	WEST RAJASTHAN	ISOL	ISOL	ISOL	ISOL	ISOL	SCT	SCT
18	EAST RAJASTHAN	FWS	SCT	SCT	FWS	FWS	FWS	FWS
19	WEST MADHYA PRADESH	FWS	FWS	FWS	FWS	FWS	WS	WS
20	EAST MADHYA PRADESH	FWS	FWS	WS	WS	WS	WS	WS
21	GUJRAT REGION	FWS	FWS	WS	WS	WS	FWS	FWS
22	SAURASHTRA & KUTCH	FWS	FWS	FWS	WS	FWS	FWS	FWS
23	KONKAN & GOA	WS	WS	WS	WS	WS	WS	WS
24	MADHYA MAHARASHTRA	SCT	ISOL	ISOL	ISOL	ISOL	ISOL	ISOL
25	MARATHWADA	ISOL	ISOL	ISOL	ISOL	ISOL	ISOL	ISOL
26	VIDARBHA	FWS	FWS	SCT	SCT	SCT	SCT	SCT
27	CHATTISGARH	FWS	FWS	FWS	SCT	SCT	SCT	SCT
28	COASTAL ANDHRA PRADESH	ISOL	ISOL	ISOL	ISOL	ISOL	ISOL	ISOL
29	TELANGANA	ISOL	ISOL	ISOL	ISOL	ISOL	ISOL	ISOL
30	RAYALASEEMA	ISOL	ISOL	ISOL	ISOL	ISOL	ISOL	ISOL
31	TAMILNADU & PUDUCHERRY	ISOL	ISOL	ISOL	ISOL	ISOL	ISOL	ISOL
32	COSTAL KARNATAKA	WS	FWS	FWS	FWS	WS	WS	WS
33	NORTH INTERIOR KARNATAKA	ISOL	ISOL	ISOL	ISOL	ISOL	ISOL	ISOL
34	SOUTH INTERIOR KARNATAKA	SCT	ISOL	ISOL	ISOL	ISOL	ISOL	ISOL
35	KERALA	WS	FWS	FWS	FWS	FWS	FWS	FWS
36	LAKSHDWEEP	WS	FWS	FWS	FWS	FWS	FWS	FWS

Legend	Category	%Stations
WS	Widespread/Most Places	76-100
FWS	Fairly Widespread/Many Places	51-75
SCT	Scattered/ A Few Places	26-50
ISOL	Isolated Places	1-25
DRY	No Rain	0

\*Red color warning does not mean "Red Alert" Red color warning means "Take Action"  
Forecast and warning for any day is valid from 0830 hours IST of day till 0830 hours IST of next day  
For more details kindly visit <https://mausam.imd.gov.in> or contact 011-2434-4599

(Service to the nation since 1875)

Fig. 1: Maximum Temperatures Dated 2025-06-19

Fig. 2: Departure of Maximum Temp. Dated 2025-06-19

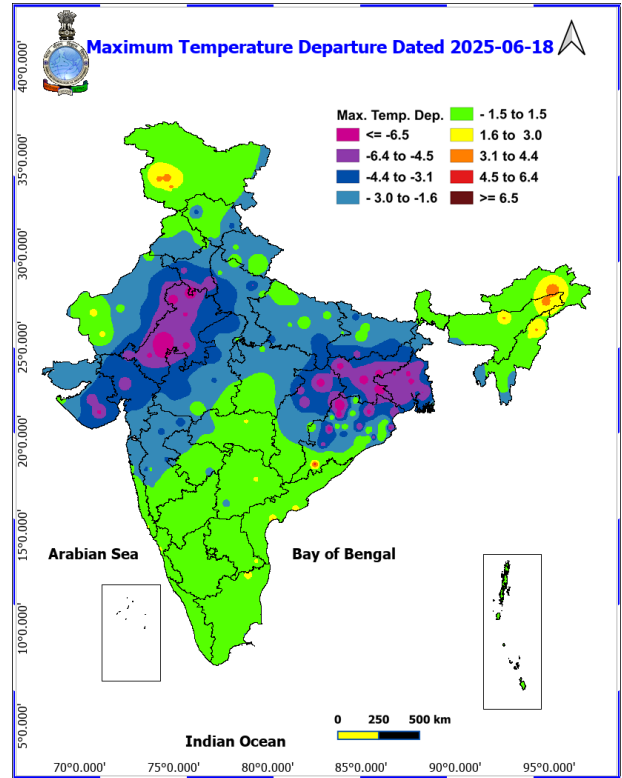
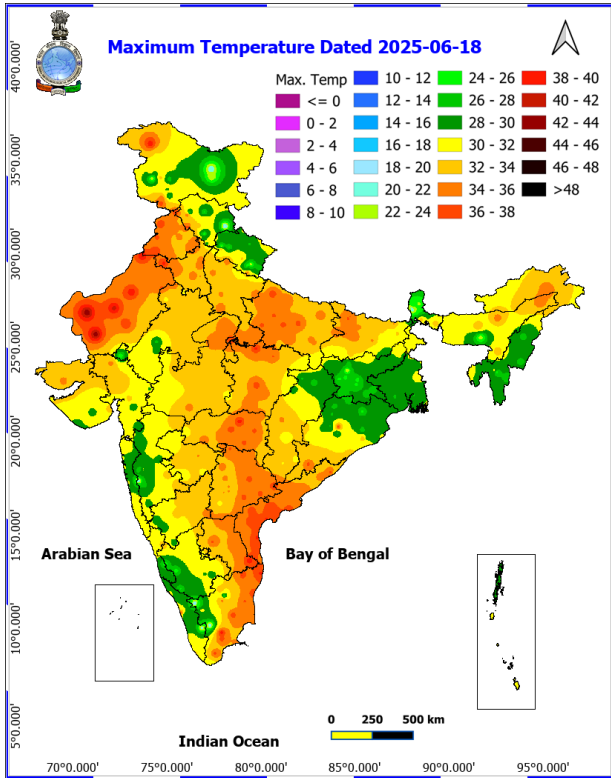
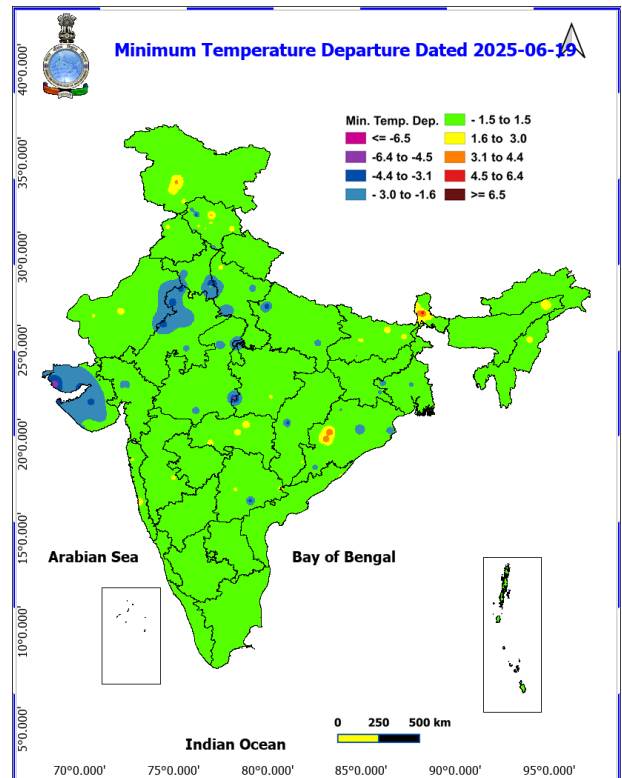
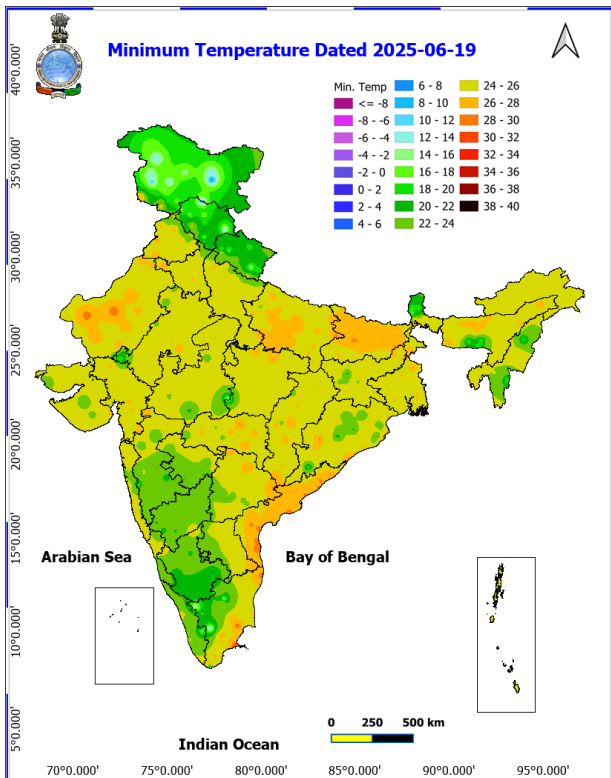


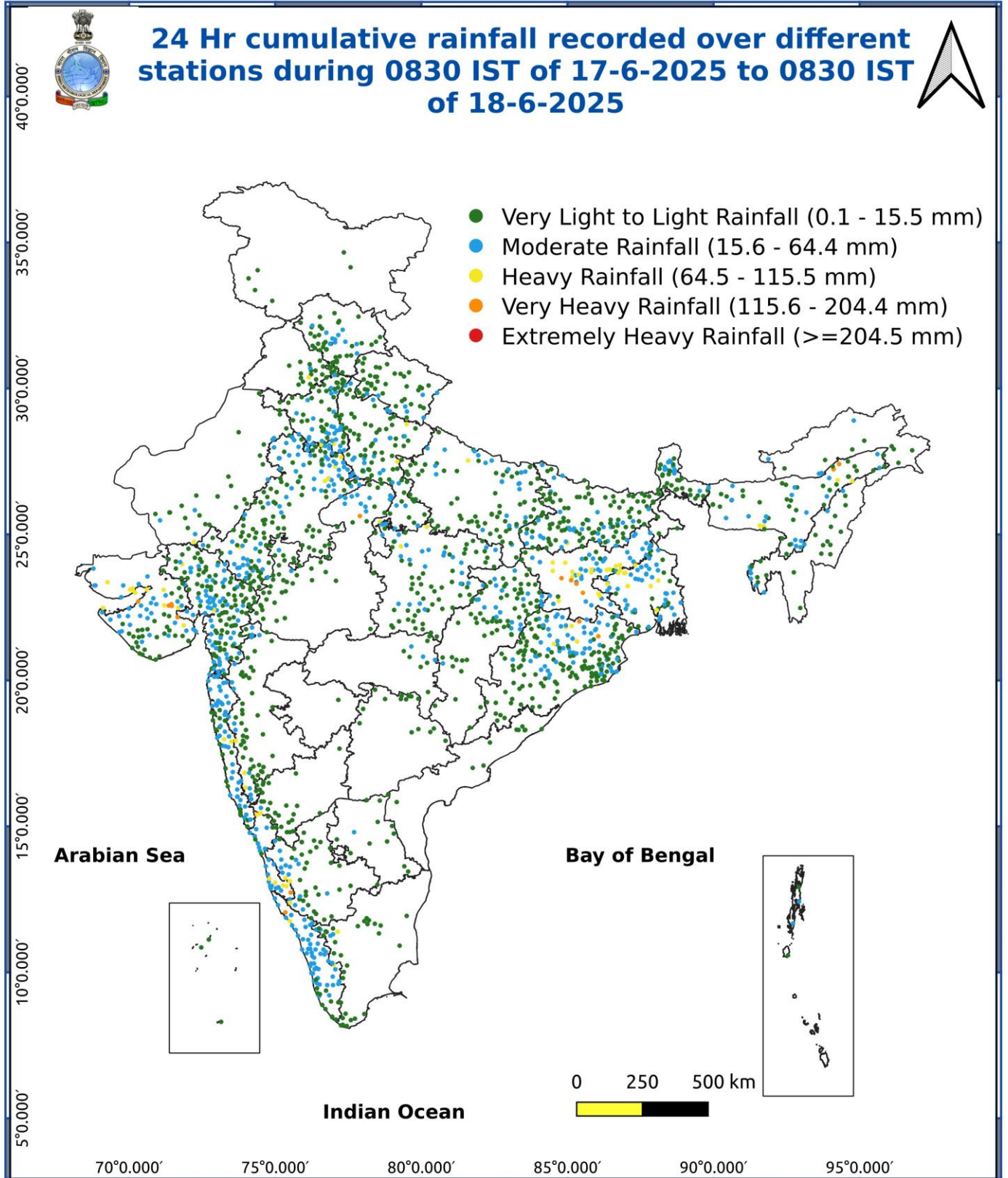
Fig. 3: Minimum Temperatures Dated 2025-06-19

Fig. 4: Departure of Minimum Temp. Dated 2025-06-19



**\*Red color warning does not mean "Red Alert" Red color warning means "Take Action"**  
Forecast and warning for any day is valid from 0830 hours IST of day till 0830 hours IST of next day  
For more details kindly visit <https://mausam.imd.gov.in> or contact 011-2434-4599

(Service to the nation since 1875)



**\*Red color warning does not mean "Red Alert" Red color warning means "Take Action"**  
Forecast and warning for any day is valid from 0830 hours IST of day till 0830 hours IST of next day  
For more details kindly visit <https://mausam.imd.gov.in> or contact 011-2434-4599

(Service to the nation since 1875)

**Impact & Action Suggested due to extremely heavy falls/ very heavy rainfall:**

- ♦ **Extremely heavy rainfall (>20 cm/24 hours)** likely at isolated places over Jharkhand on 19th June.
- ♦ **Heavy to very heavy rainfall** likely to continue over Northeast India during 19th-25th; Konkan & Goa, Madhya Maharashtra, East Rajasthan on 19th, Chhattisgarh during 19th-20th, Madhya Pradesh, Uttar Pradesh during 20th -22nd, Uttarakhand during 21st-23rd and Himachal Pradesh on 22nd & 23rd June.

**Impact Expected**

- ♦ Localized Flooding of roads, water logging in low lying areas and closure of underpasses mainly in urban areas of the above region.
- ♦ Occasional reduction in visibility due to heavy rainfall.
- ♦ Disruption of traffic in major cities due to water logging in roads leading to increased travel time.
- ♦ Minor damage to kutcha roads.
- ♦ Possibilities of damage to vulnerable structure.
- ♦ Localized Landslides/Mudslides/landslips/mudslips/landsinks/mudsinks.
- ♦ Damage to horticulture and standing crops in some areas due to inundation.
- ♦ It may lead to riverine flooding in some river catchments (for riverine flooding please visit Web page of CWC).

**Action Suggested**

- ♦ Check for traffic congestion on your route before leaving for your destination.
- ♦ Follow any traffic advisories that are issued in this regard.
- ♦ Avoid going to areas that face the water logging problems often.
- ♦ Avoid staying in vulnerable structure.

**Impact expected and action suggested due to isolated thunderstorm with lightning/gusty & Squally winds**

- ♦ Thundersquall (wind speed reaching 50-60 kmph gusting to 70 kmph) at isolated places over Madhya Pradesh on 19th June.

**Impact expected:**

- ♦ Breaking of tree branches, uprooting of large avenue trees. Large dead limbs blown from trees. Damage to Standing crops.
- ♦ Minor to Major damage to banana and papaya trees.
- ♦ Minor to major damage to power and communication lines due to breaking of branches.
- ♦ Strong wind/hail may damage plantation, horticulture and standing crops.
- ♦ Partial damage to vulnerable structures due to strong winds.
- ♦ Minor damage to kutcha houses/walls and huts.
- ♦ Loose objects may fly.

**Action suggested:**

- ♦ People are advised to keep a watch on the weather for worsening conditions and be ready to move to safer places accordingly.
- ♦ Stay indoors, close windows & doors and avoid travel if possible.
- ♦ Take safe shelters; do not take shelter under trees.
- ♦ Do not lie on concrete floors and do not lean against concrete walls.
- ♦ Unplug electrical/ electronic appliances.
- ♦ Immediately get out of water bodies.
- ♦ Keep away from all the objects that conduct electricity.

## Agromet advisories for various parts of the country

### Agromet advisories for likely impact of Heavy / Heavy to Very Heavy / Extremely Heavy Rainfall

- In Gangetic West Bengal, postpone sowing of kharif rice. Ensure proper drainage in already sown rice nurseries, sesame, jute and groundnut. Cover the young seedlings of kharif rice with plastic sheets or agro-shade nets to protect them from heavy rains. Keep the harvested produce of Boro rice at safer place and use tarpaulin or polythene sheets to protect harvested grain from heavy rain.
- In Sub-Himalayan West Bengal, maintain proper drainage channels in rice nurseries and fields of jute and ginger to avoid water stagnation.
- In North Odisha, postpone sowing of rice nursery and ensure proper drainage from already sown rice nurseries, maize and vegetables to prevent water logging. Postpone sowing of millets, maize, pulses and vegetables during heavy rain. Cover rice and vegetable nurseries with plastic sheets to prevent washing away of seeds.
- In Jharkhand, make necessary arrangements to drain out excess water from rice nurseries, moong, vegetables and fruit orchards. Postpone harvesting of summer maize and keep the already harvested produce in safe place.
- In South Gujarat, postpone sowing of soybean and rice nurseries. Ensure proper drainage facilities in already sown rice nurseries, soybean and also in banana plantations to prevent water logging. Provide support to sugarcane and banana to prevent lodging.
- In Saurashtra, drain out excess water and ensure proper drainage facility from vegetable fields.
- In Rajasthan, cover the harvested green gram and vegetables and store in safe place.
- In Kerala, ensure proper drainage facilities in rice nurseries, transplanted rice fields, coconut and banana plantations to prevent water logging. Undertake propping in banana to protect the plants from heavy rains.
- In Tamil Nadu, ensure proper drainage facilities in rice nurseries, cotton, sugarcane, groundnut and transplanted rice fields, coconut and banana plantations to prevent water logging. Provide staking or support to tender plants of cotton, young plants of sugarcane and fruit-bearing plants of banana to avoid lodging.
- In Coastal Karnataka, postpone nursery sowing of rice. Ensure proper drainage facilities in rice nurseries, banana, coconut and arecanut plantations to prevent water logging.
- In Konkan & Goa and ghat areas of Madhya Maharashtra, make arrangement to drain out excess water from rice nurseries to prevent water logging.
- In Bhabar and Tarai Zone of Uttarakhand, ensure proper drainage in already sown crops of pigeon pea, millets and soybean.
- In Assam, keep the harvested produce of sesame, foxtail millet, Boro rice, banana and citrus at safer places. Ensure proper drainage in Sali rice nursery, maize and sugarcane fields, arecanut and coconut plantations to prevent water logging.
- In Meghalaya, postpone nursery sowing of rice especially in valleys. Ensure proper drainage in the fields of maize, ginger, French bean, cowpea, vegetables and around rice nurseries to prevent water logging. Provide strong bamboo stakes or trellis support to cow pea, cucumber and bottle gourd to prevent vines from trailing on wet ground. Provide support to banana plant to prevent lodging.
- In Arunachal Pradesh, keep the harvested produce of soybean and vegetables such as chilli and okra at a safer place. Ensure proper drainage in rice nurseries, kiwi and apple orchards to avoid water logging.
- Nagaland – Ensure proper drainage in jhum rice and rice nursery. Drain out excess water from orchards.

### Livestock / Fishery

- Keep the animals inside the shed during heavy rainfall and provide them balanced feed.
- Store feed and fodder in a safe place to prevent spoilage.
- Construct an outlet with proper netting around the ponds to drain out excess water, thereby preventing fish from escaping in case of overflow.
- Provide mechanical support to horticultural crops and staking or support to vegetables and young fruit plants / fruit-bearing plants to avoid lodging due to strong winds.



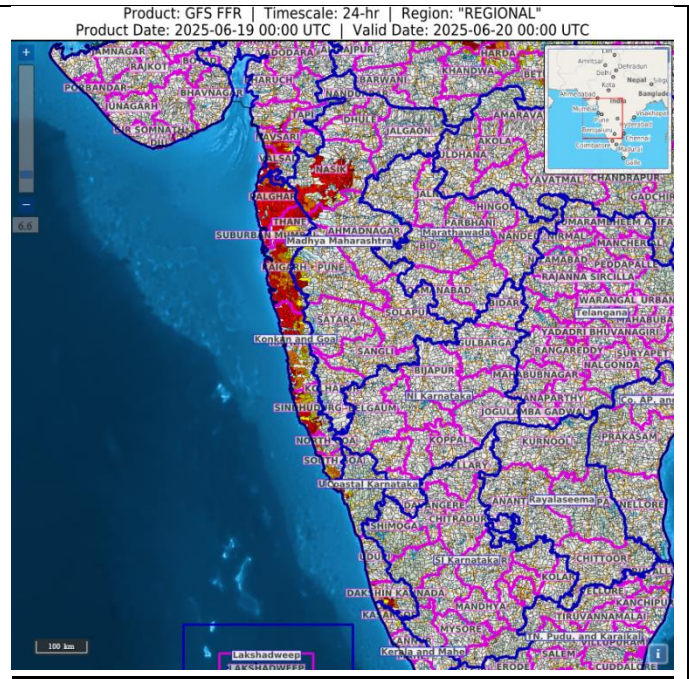
**Flood Guidance:**

**24 hours Outlook for the Flash Flood Risk (FFR) till 0530 IST of 20-06-2025 :**

**Low to Moderate flash flood risk** likely over few watersheds & neighbourhoods of following Met Sub-divisions during next 24 hours.

**Gujarat Region** - Bharuch, Dangs, Narmada, Navsari, Surat, Tapi and Valsad districts.  
**Konkan & Goa** - North Goa, Mumbai City, Palghar, Raigarh, Ratnagiri, Sindhudurg, Suburban Mumbai and Thane districts.

Surface runoff/ Inundation may occur at some fully saturated soils & low-lying areas over Area of Concern (AoC) as shown in map due to expected rainfall occurrence in next 24 hours.

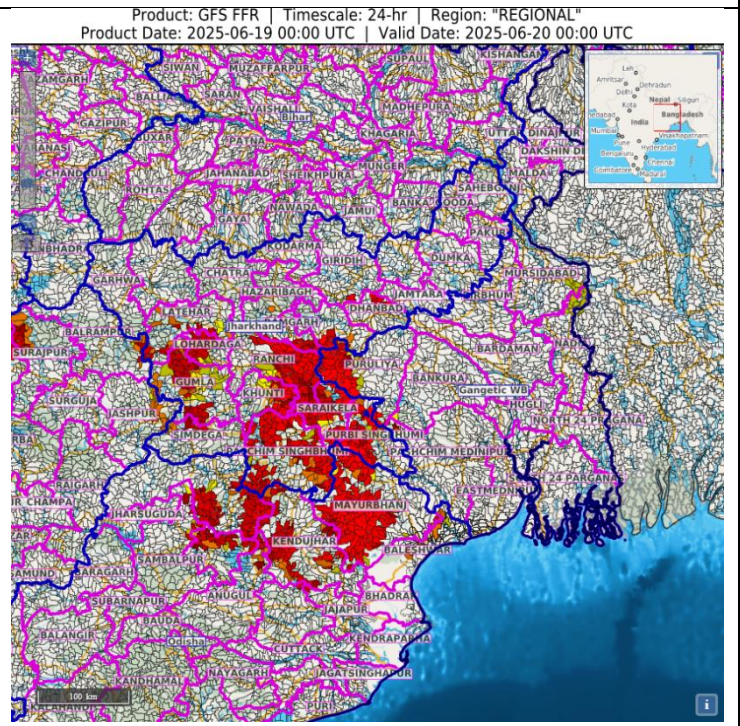


**24 hours Outlook for the Flash Flood Risk (FFR) till 0530 IST of 20-06-2025 :**

**Moderate to High flash flood risk** likely over few watersheds & neighbourhoods of following Met Sub-divisions during next 24 hours.

**Odisha** - Baleshwar, Deogarh, Kendujhar, Mayurbhanj, Jharsuguda and Sundargarh districts.  
**Gangetic West Bengal** - Bankura, Pashchim Medinipur and Purulia districts.  
**Jharkhand** - Bokaro, Hazaribagh, Khunti, Ramgarh, Latehar, Lohardaga, Gumla, Ranchi, Saraikela, Simdega and West Singhbhum districts.

Surface runoff/ Inundation may occur at some fully saturated soils & low-lying areas over Area of Concern (AoC) as shown in map due to expected rainfall occurrence in next 24 hours.



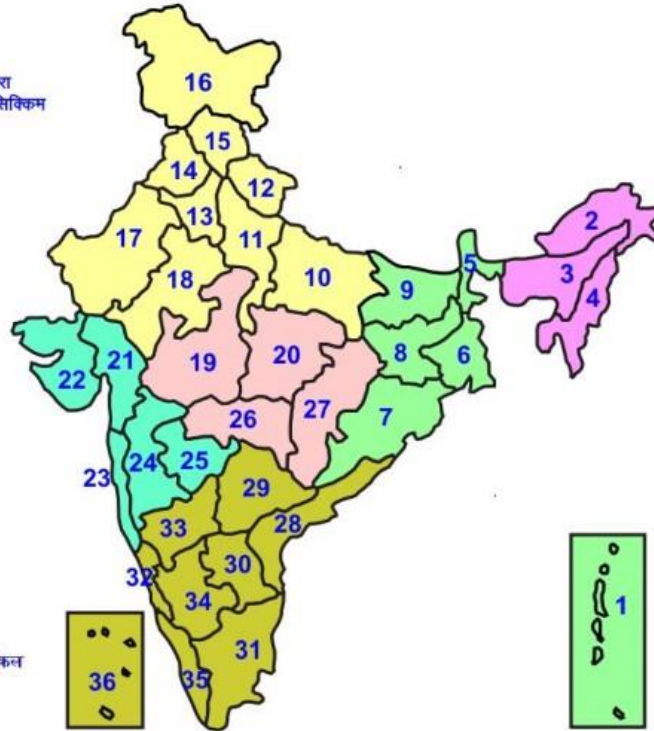
**\*Red color warning does not mean "Red Alert" Red color warning means "Take Action"**  
Forecast and warning for any day is valid from 0830 hours IST of day till 0830 hours IST of next day  
For more details kindly visit <https://mausam.imd.gov.in> or contact 011-2434-4599

(Service to the nation since 1875)



## LEGENDS

- 1 अंडमान और निकोबार द्वीप समूह
- 2 अरुणाचल प्रदेश
- 3 असम और मेघालय
- 4 नागालैंड मनीपुर मीजोरम और त्रिपुरा
- 5 उप हिमालय पश्चिम बंगाल एवं सिक्किम
- 6 पश्चिम गंगेय बंगाल
- 7 ओडिशा
- 8 झारखंड
- 9 बिहार
- 10 पूर्वी उत्तर प्रदेश
- 11 पश्चिम उत्तर प्रदेश
- 12 उत्तराखंड
- 13 हरियाणा चंडिगढ़ एवं दिल्ली
- 14 पंजाब
- 15 हिमाचल प्रदेश
- 16 जम्मू एवं कश्मीर एवं लद्दाख
- 17 पश्चिम राजस्थान
- 18 पूर्वी राजस्थान
- 19 पश्चिम मध्य प्रदेश
- 20 पूर्वी मध्य प्रदेश
- 21 गुजरात क्षेत्र
- 22 सीराष्ट्र एवं कच्छ
- 23 कोंकण एवं गोवा
- 24 मध्य महाराष्ट्र
- 25 मराठावाडा
- 26 विदर्भ
- 27 छत्तीसगढ़
- 28 तटीय आंध्र प्रदेश एवं यनम
- 29 तेलंगाना
- 30 रायलसीमा
- 31 तमिलनाडु, पुदुचेरी एवं कराईकल
- 32 तटिय कर्नाटक
- 33 आंतरिक उत्तरी कर्नाटक
- 34 आंतरिक दक्षिणी कर्नाटक
- 35 केरल एवं माहे
- 36 लक्षद्वीप



1. Andaman & Nicobar Islands
2. Arunachal Pradesh
3. Assam & Meghalaya
4. Nagaland, Manipur, Mizoram & Tripura
5. Sub-Himalayan West Bengal & Sikkim
6. Gangetic West Bengal
7. Orissa
8. Jharkhand
9. Bihar
10. East Uttar Pradesh
11. West Uttar Pradesh
12. Uttarakhand
13. Haryana, Chd & Delhi
14. Punjab
15. Himachal Pradesh
16. Jammu & Kashmir and Ladakh
17. West Rajasthan
18. East Rajasthan
19. West Madhya Pradesh
20. East Madhya Pradesh
21. Gujarat
22. Saurashtra
23. Konkan & Goa
24. Madhya Maharashtra
25. Marathwada
26. Vidharbha
27. Chhattisgarh
28. Coastal Andhra Pradesh & Yanam
29. Telangana
30. Rayalaseema
31. Tamilnadu, Puducherry & Karaikal
32. Coastal Karnataka
33. North Interior Karnataka
34. South Interior Karnataka
35. Kerala & Mahe
36. Lakshadweep

## SPATIAL DISTRIBUTION (% of Stations reporting)

% Stations	Category	% Stations	Category
76-100	Widespread (WS/ Most Places)	26-50	Scattered (SCT/ A Few Places)
51-75	Fairly Widespread (FWS/ Many Places)	1-25	Isolated (ISOL)

### Subdivision Colour

- NO WARNING
- WATCH (BE UPDATED)
- ALERT (BE PREPARED TO TAKE ACTION)
- WARNING (TAKE ACTION)

### Probabilistic Forecast

Terms	Probability of Occurrence (%)
Unlikely	< 25
Likely	25 - 50
Very Likely	50 - 75
Most Likely	> 75

- Heavy Rain
- Very Heavy Rain
- Extremely Heavy Rain
- Heavy Snow
- Thunderstorm & Lightning
- Hailstrom
- Dust Strom
- Dust Raising Winds
- Strong surface winds
- Heat Wave
- Hot Day
- Warm Night
- Cold Wave
- Cold Day
- Ground Frost
- FOG Fog
- Hot & Humid

## LEGENDS

### WARNING

WARNING (TAKE ACTION)
ALERT (BE PREPARED)
WATCH (BE UPDATED)
NO WARNING (NO ACTION)

### Probabilistic Forecast

Terms	Probability of Occurrence (%)
Unlikely	< 25
Likely	25 - 50
Very Likely	50 - 75
Most Likely	> 75



Heavy: 64.5 to 115.5 mm/cm \*  
Very Heavy: 115.6 to 204.4 mm/cm \*  
Extremely Heavy: > 204.4 mm/cm \*



When maximum temperature of a station reaches  $\geq 40^{\circ}\text{C}$  for plains and  $\geq 30^{\circ}\text{C}$  for hilly regions  
(a) Based on Departure from normal

Heat Wave: Maximum Temperature Departure from normal  $4.5^{\circ}\text{C}$  to  $6.4^{\circ}\text{C}$ .  
Severe Heat Wave: Maximum Temperature Departure from normal  $\geq 6.5^{\circ}\text{C}$

(b). Based on Actual maximum temperature

Heat Wave: When actual maximum temperature  $\geq 45^{\circ}\text{C}$ .  
Severe Heat Wave: When actual maximum temperature  $\geq 47^{\circ}\text{C}$

(c). Criteria for heat wave for coastal stations

When maximum temperature departure is  $> 4.5^{\circ}\text{C}$  from normal. Heat Wave may be described provided maximum temperature  $\geq 37^{\circ}\text{C}$



When maximum temperature remains  $40^{\circ}\text{C}$

Warm Night: When minimum temperature departure  $4.5^{\circ}\text{C}$  to  $6.4^{\circ}\text{C}$ .  
Severe Warm Night: When minimum temperature departure  $> 6.4^{\circ}\text{C}$ .



When minimum temperature of a station  $\leq 10^{\circ}\text{C}$  for plains and  $\leq 0^{\circ}\text{C}$  for hilly regions.

(a). Based on departure

Cold Wave: Minimum Temperature Departure from normal  $-4.5^{\circ}\text{C}$  to  $-6.4^{\circ}\text{C}$ .  
Severe Cold Wave: Minimum Temperature Departure from normal  $\leq -6.5^{\circ}\text{C}$

(b) Based on actual Minimum Temperature (for Plains only)

Cold Wave : When Minimum Temperature is  $\leq 4.0^{\circ}\text{C}$   
Severe Cold Wave: When Minimum Temperature is  $\leq 2.0^{\circ}\text{C}$

(c) For Coastal Stations

When Minimum Temperature departure is  $\leq -4.5^{\circ}\text{C}$  & actual Minimum Temperature is  $\leq 15^{\circ}\text{C}$



When minimum temperature of a station  $\leq 10^{\circ}\text{C}$  for plains and  $\leq 0^{\circ}\text{C}$  for hilly regions  
Based on departure

Cold Day: Maximum Temperature Departure from normal  $-4.5^{\circ}\text{C}$  to  $-6.4^{\circ}\text{C}$ .  
Severe Cold Day: Maximum Temperature Departure from normal  $\leq -6.5^{\circ}\text{C}$



Phenomenon of small droplets suspended in air and the horizontal visibility  $< 1\text{km}$

Moderate Fog: When the visibility between 500-200 metres  
Dense Fog: when the visibility between 50- 200 metres  
Very Dense Fog: when the visibility  $< 50$  metres



Sudden electrical discharges manifested by a flash of light (Lightning) and a sharp rumbling sound (thunder)



An ensemble of particles of dust or sand energetically lifted to great heights by a strong and turbulent wind.



Ice deposits on ground

Air temperature  $\leq 4^{\circ}\text{C}$  ( over Plains)



A strong wind that rises suddenly, lasts for atleast 1 minute.

Moderate: Wind speed 52-61 kmph  
Severe: Wind speed 62-87 kmph  
Very Severe: Wind speed  $> 87$  kmph



Effect of various waves in the sea over specific area

Rough to very rough: Wind speed 41-62 kmph (22-33 knots) & Wave height 2.5-6 metre  
High to very high: Wind speed 63-117 kmph ( 34-63 knots) & Wave height 6-14 metre  
Phenomenal: Wind speed  $> 117$  kmph ( $> 63$  knots) & Wave height  $> 14$  metre



Cyclonic Storm: Wind speed 62-87 kmph (34-47 knots)  
Severe Cyclonic Storm: Wind speed 88-117 kmph (48-63 knots)  
Very Severe Cyclonic Storm: Wind speed 118-165 kmph (64 - 89 knots)  
Extremely Severe Cyclonic Storm: Wind speed 166-220 kmph (90 -119 knots)  
Super Cyclone Storm: Wind speed  $> 220$  kmph ( $> 119$  knots)

\*Red color warning does not mean "Red Alert" Red color warning means "Take Action"

Forecast and warning for any day is valid from 0830 hours IST of day till 0830 hours IST of next day

For more details kindly visit <https://mausam.imd.gov.in> or contact 011-2434-4599

(Service to the nation since 1875)