

2025-08-12

Time of Issue: 07:57:00 hours IST
(Morning)

ALL INDIA WEATHER SUMMARY AND FORECAST BULLETIN

Significant Weather Features

Weather, Forecast and Warnings :

Northwest India:

Extremely heavy rainfall very likely at isolated places over Jammu- Kashmir on 12th; Uttarakhand on 13th August.

Isolated heavy rainfall likely over Punjab on 12th; Jammu-Kashmir on during 13th-15th; Himachal Pradesh, Uttarakhand during 12th-17th; Haryana, Chandigarh during 13th-15th; Uttar Pradesh during 12th-15th; East Rajasthan during 15th-17th August with very heavy rainfall over Jammu Kashmir on 11th ;Himachal Pradesh during 12th-14th; Uttarakhand on during 12th, during 14th-17th; West Uttar Pradesh on 13th & 14th; East Uttar Pradesh on 13th & 14th August.

Light/moderate rainfall at many places accompanied with thunderstorm & lightning likely over Himachal Pradesh on 10th August; Jammu-Kashmir-Ladakh-Gilgit-Baltistan-Muzaffarabad & Uttarakhand during next 7 days.

Northeast India:

Extremely heavy rainfall very likely at isolated places over Arunachal Pradesh, Assam & Meghalaya on 12th August.

Light/moderate rainfall at many places accompanied with thunderstorm, lightning and isolated heavy rainfall likely to continue over Arunachal Pradesh, Assam & Meghalaya, Nagaland, Manipur, Mizoram & Tripura during 12th-15th August.

Light/moderate rainfall at many places accompanied with thunderstorm & lightning likely during next 3 days.

South Peninsular India:

Extremely heavy rainfall very likely at isolated places over Telangana on 14th & 15th August.

Isolated heavy rainfall likely over Karnataka during 13th - 17th; Rayalaseema during 12th-15th; Coastal Andhra Pradesh & Yanam, Telangana during 12th-17th; Tamil Nadu, Puducherry & Karaikal during 12th-13th, Kerala on 12th, during 14th-17th August with isolated very heavy rainfall over Coastal Andhra Pradesh & Yanam during 13th-15th, Rayalaseema on 13th & 14th; Telangana during 13th-17th August.

Strong surface winds (speed reaching 40-50 kmph) very likely over South Peninsular India during next 2 days.

Light to moderate rainfall at most/many places accompanied with thunderstorm & lightning likely over, Rayalaseema, Coastal Andhra Pradesh & Yanam and Telangana during next 5 days.

East & Central India:

Extremely heavy rainfall very likely at isolated places over Sub-Himalayan West Bengal & Sikkim on 12th August.

Isolated heavy rainfall likely over West Madhya Pradesh during 14th-17th; East Madhya Pradesh during 12th-17th; Vidarbha; Chhattisgarh during 12th-17th; Andaman & Nicobar Islands on 12th; Sub-Himalayan West Bengal & Sikkim on 13th & 14th; Bihar during 12th-14th; Odisha on 14th & 15th August with isolated very heavy rainfall over West Madhya Pradesh on 17th; Vidarbha, Chhattisgarh on 13th & 14th, Sub-Himalayan West Bengal & Sikkim on 13th; Bihar during 12th-13th and Odisha during 12th & 13th August.

Light to moderate rainfall at most/many places accompanied with thunderstorm & lightning likely over the region during next 5 days with possibility of thundersquall (speed 50-60 kmph) very likely over Andaman & Nicobar Islands during 12th -13th August.

***Red color warning does not mean "Red Alert" Red color warning means "Take Action"**

Forecast and warning for any day is valid from 0830 hours IST of day till 0830 hours IST of next day

For more details kindly visit <https://mausam.imd.gov.in> or contact 011-2434-4599

(Service to the nation since 1875)



West India:

Isolated heavy rainfall likely over Madhya Maharashtra during 13th-17th; Konkan & Goa during 12th-17th; Gujarat Region on 12th, Marathawada on 15th August with isolated very heavy rainfall over Konkan & Goa, ghat areas of Madhya Maharashtra on 16th & 17th August.

Light to moderate rainfall at many/some places very likely over the region during next 7 days.

Main Weather Observations:

❖ **Rainfall distribution** (from 0830 hours IST of yesterday to 0530 hours IST of today): **at most places** over South Interior Karnataka, Konkan & Goa , Kerala & Mahe, North Interior Karnataka, Punjab, Uttarakhand, Andaman & Nicobar Islands, Himachal Pradesh, East Uttar Pradesh, Arunachal Pradesh, Coastal Karnataka, Rayalaseema, West Uttar Pradesh, Madhya Maharashtra , Haryana Chandigarh & Delhi and Assam & Meghalaya; **at many places** over Jammu & Kashmir and Ladakh, Gujarat Region, Vidarbha, West Madhya Pradesh, Saurashtra & Kutch, East Madhya Pradesh, West Rajasthan, Odisha, Gangetic West Bengal, Nagaland, Manipur, Mizoram & Tripura, Tamilnadu Puducherry & Karaikal, Coastal Andhra Pradesh & Yanam, Jharkhand, Bihar, Telangana, Chhattisgarh and Lakshadweep ; **Dry** over rest of the country.

❖ **Significant rainfall recorded(in cm)** (from 0830 hours IST of yesterday to 0530 hours IST of today): Jammu & Kashmir and Ladakh: Katra (dist Reasi) 18, Jammu (dist Jammu) 8; Coastal Andhra Pradesh & Yanam: Bapatla (dist Bapatla) 8, Machilipatnam (dist Krishna) 2; **Uttarakhand:** Dehra Dun-mokampur (dist Dehradun) 6; **Jharkhand:** Ranchi AP (dist Ranchi) 4; **Bihar:** Purnea (dist Purnia) 4; Andaman & Nicobar Islands: Port Blair (dist South Andaman) 4; Himachal Pradesh: Sundernagar (dist Mandi) 3; East Uttar Pradesh: Sultanpur-obs2 (dist Sultanpur) 3; **Punjab:** Chandigarh (dist Chandigarh) 3; Arunachal Pradesh: Itanagar (dist Papum Pare) 3; **Rayalaseema:** Tirupathi (dist Tirupati) 2; West Uttar Pradesh: Bareilly (dist Bareilly) 2; Madhya Maharashtra : Solapur (dist Solapur) 2; Haryana Chandigarh & Delhi: New Delhi (safdarjung) (dist South West Delhi), Ambala (dist Ambala) 2 Each; Assam & Meghalaya: North Lakhimpur (dist Lakhimpur) 2; **Telangana:** Hyderabad (dist Hyderabad) 2.

❖ **Heavy Rainfall observed** (from 0830 hours IST of yesterday to 0530 hours IST of today): **Heavy to very heavy rain** at isolated places over Jammu & Kashmir and Ladakh **Heavy rain** at most places over Uttarakhand, at isolated places over Coastal Andhra Pradesh & Yanam

❖ **Minimum Temperature Departures (as on 11-08-2025):** **markedly above normal(> 5.1°C)** at isolated places over Assam & Meghalaya, Bihar, East Uttar Pradesh, West Uttar Pradesh, Himachal Pradesh, West Madhya Pradesh and East Madhya Pradesh. **appreciably above normal(3.1°C to 5.0°C)** at isolated places over Sub Himalayan West Bengal & Sikkim, Odisha, Jammu-Kashmir-Ladakh-Gilgit-Baltistan-Muzaffarabad, Gujarat Region and Saurashtra & Kutch. **above normal(1.6°C to 3.0°C)** at many places over Andaman & Nicobar Islands and Punjab; at few places over Nagaland, Manipur, Mizoram & Tripura, Gangetic West Bengal, Uttarakhand, Haryana-Chandigarh-Delhi, Vidarbha and Kerala & Mahe; at isolated places over West Rajasthan, East Rajasthan, Madhya Maharashtra, Marathwada, Chhattisgarh and Tamil Nadu, Puducherry & Karaikal. **near normal(-1.5°C to 1.5°C)** at many places over Coastal Andhra Pradesh & Yanam; at most places over Jharkhand, Konkan & Goa, Telangana, Coastal Karnataka, North Interior Karnataka and South Interior Karnataka; at few places over Arunachal Pradesh, Rayalaseema and Lakshadweep. **The lowest minimum temperature** of 19.0°C was reported at HALFLONG (ASSAM), and JEUR (MAHARASHTRA) over the Plains of India.

❖ **Maximum Temperature Departures (as on 11-08-2025):** **markedly above normal(> 5.1°C)** at isolated places over Madhya Maharashtra and Chhattisgarh. **appreciably above normal(3.1°C to 5.0°C)** at many places over Gujarat Region and Vidarbha; at few places over Odisha and Jammu-Kashmir-Ladakh-Gilgit-Baltistan-Muzaffarabad; at isolated places over Assam & Meghalaya, Gangetic West Bengal and East Rajasthan. **above normal(1.6°C to 3.0°C)** at few places over Nagaland, Manipur, Mizoram & Tripura, West Rajasthan, East Madhya Pradesh, Konkan & Goa, Coastal Andhra Pradesh & Yanam, Telangana and North Interior Karnataka; at isolated places over Jharkhand, Punjab, Himachal Pradesh, West Madhya Pradesh, Saurashtra & Kutch and Marathwada. **near normal(-1.5°C to 1.5°C)** at many places over Bihar, East Uttar Pradesh, Haryana-Chandigarh-Delhi and Kerala & Mahe; at most places over Sub Himalayan West Bengal & Sikkim, Coastal Karnataka, South Interior Karnataka and Lakshadweep; at few places over Andaman & Nicobar Islands; at isolated places over West Uttar Pradesh and Tamil Nadu, Puducherry & Karaikal. **The highest maximum temperature** of 39.0°C was reported at SRIGANGANAGAR (RAJASTHAN).

***Red color warning does not mean "Red Alert" Red color warning means "Take Action"**

Forecast and warning for any day is valid from 0830 hours IST of day till 0830 hours IST of next day

For more details kindly visit <https://mausam.imd.gov.in> or contact 011-2434-4599

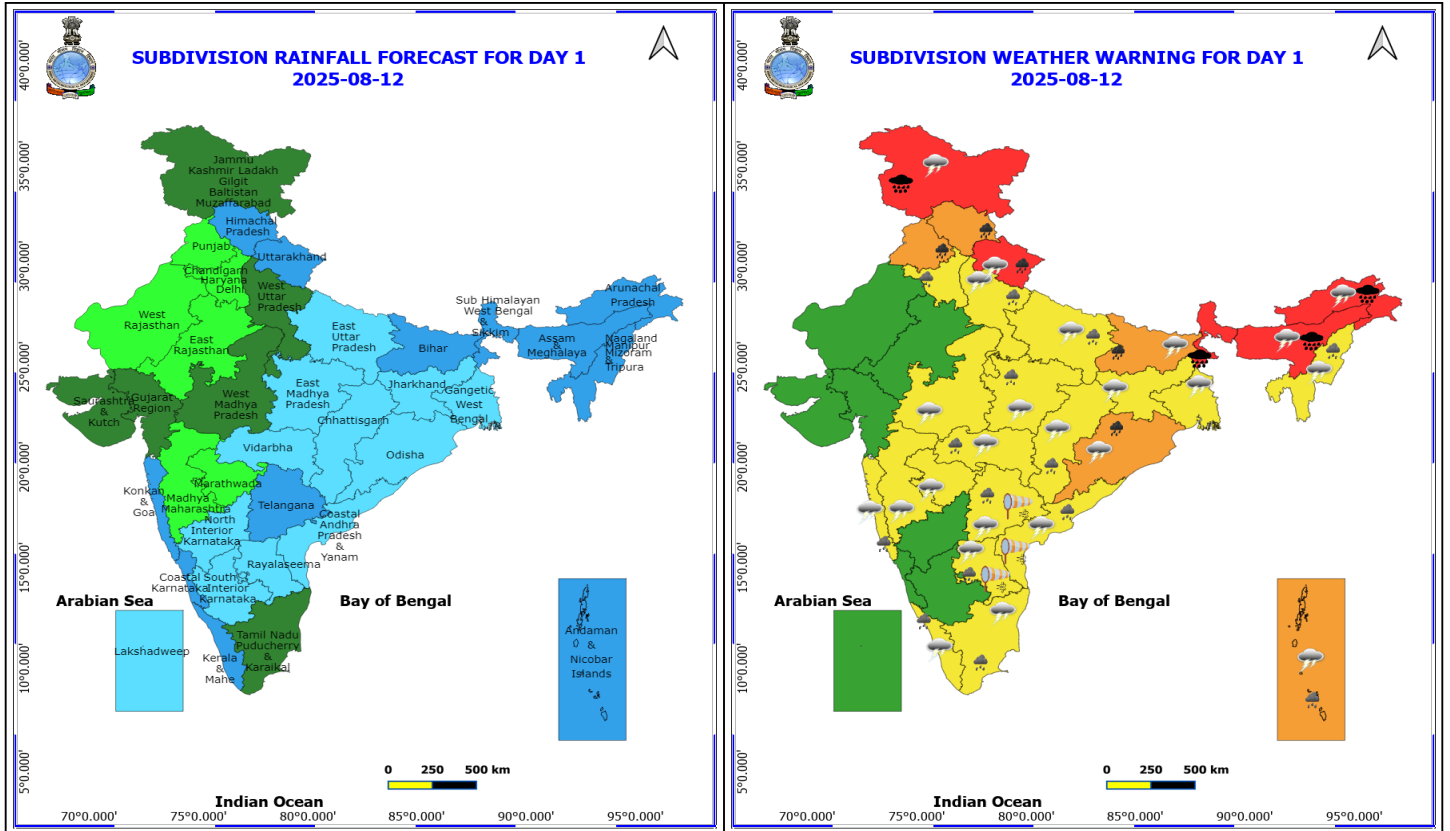
(Service to the nation since 1875)

Meteorological Analysis (Based on 0530 hours IST)

- The **monsoon trough** at mean sea level now passes through Bhatinda, Patiala, Dehradun and thence east-southeastwards to Arunachal Pradesh close to foothills of Himalayas.
- The **upper air cyclonic circulation** over north Coastal Andhra Pradesh & adjoining Telangana between 3.1 & 5.8 km above mean sea level tilting southwards with height persists.
- The **upper air cyclonic circulation** over northwest Uttar Pradesh extending upto 3.1 km above mean sea level persists.
- The **upper air cyclonic circulation** over Kutch & neighbourhood at 3.1 km above mean sea level persists.
- The **upper air cyclonic circulation** over northeast Assam persists now seen upto 3.1 km above mean sea level.
- The **Western Disturbance** as a cyclonic circulation over north Pakistan & adjoining Jammu & Kashmir between 3.1 & 5.8 km above mean sea level persists.
- A **Low-Pressure area** is likely to form over northwest & adjoining westcentral Bay of Bengal around 13th August, 2025 and become more marked during subsequent 2 days.

Weather Outlook for subsequent 3 days

- Scattered to fairly widespread rainfall over most parts of country with isolated Heavy rainfall over the western coast.



12 August (Day 1)

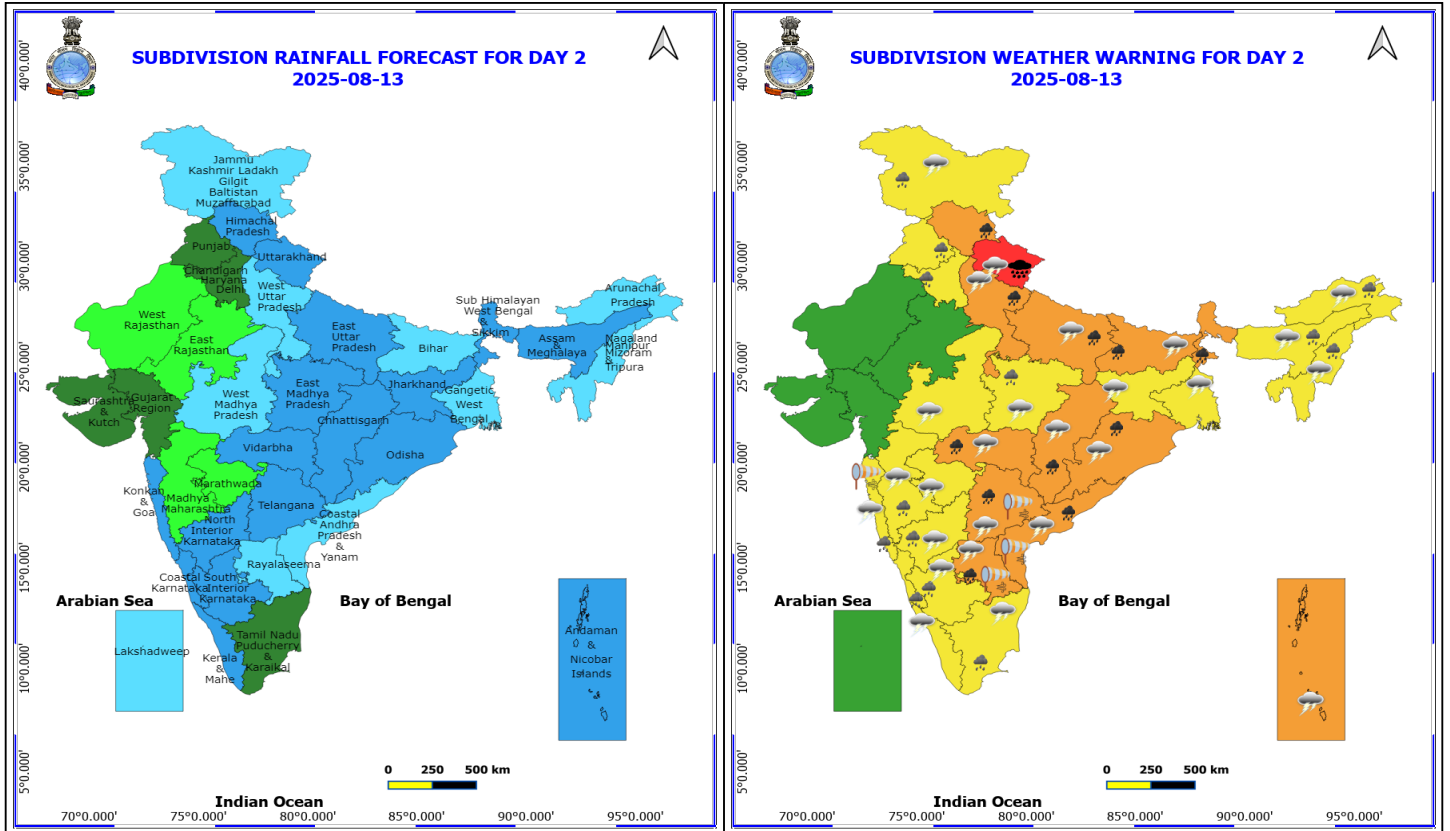
- ❖ **Heavy to Very Heavy Rainfall with isolated Extremely Heavy Rainfall** very likely at isolated places over Arunachal Pradesh, Assam & Meghalaya, Jammu-Kashmir-Ladakh-Gilgit-Baltistan-Muzaffarabad and Sub Himalayan West Bengal & Sikkim.
- ❖ **Heavy to Very Heavy Rainfall** very likely at isolated places over Bihar, Himachal Pradesh, Odisha, Punjab and Uttarakhand.
- ❖ **Heavy Rainfall** very likely at isolated places over Andaman & Nicobar Islands, Andhra Pradesh, Chhattisgarh, East Madhya Pradesh, Haryana, Chandigarh & Delhi, Kerala & Mahe, Konkan & Goa, Nagaland, Manipur, Mizoram and Tripura, Tamil Nadu Puducherry & Karaikal, Telangana, Uttar Pradesh and Vidarbha.
- ❖ **Thundersquall with wind speed reaching(50-60kmph)** very likely at isolated places over Andaman & Nicobar Islands.
- ❖ **Thunderstorm accompanied with lightning & gusty winds(30-40kmph)** very likely at isolated places over Bihar, Jammu-Kashmir-Ladakh-Gilgit-Baltistan-Muzaffarabad and Jharkhand.
- ❖ **Thunderstorm accompanied with Lightning** very likely at isolated places over Andhra Pradesh, Arunachal Pradesh, Assam & Meghalaya, Chhattisgarh, Gangetic West Bengal, Kerala & Mahe, Konkan & Goa, Madhya Pradesh, Maharashtra, Nagaland, Manipur, Mizoram and Tripura, Odisha, Tamil Nadu Puducherry & Karaikal, Telangana, Uttar Pradesh and Uttarakhand.
- ❖ **Strong Surface Winds** very likely at isolated places over Andhra Pradesh and Telangana.
- ❖ Squally wind with speed reaching 45 kmph to 55 kmph gusting to 65 kmph is likely to prevail along and off Somalia, Yemen, Oman coasts, some parts of westcentral Arabian sea & adjoining, few parts of southwest Arabian Sea, many

***Red color warning does not mean "Red Alert" Red color warning means "Take Action"**
Forecast and warning for any day is valid from 0830 hours IST of day till 0830 hours IST of next day
For more details kindly visit <https://mausam.imd.gov.in> or contact 011-2434-4599

(Service to the nation since 1875)

parts of northwest Arabian sea.

❖ Squally weather with wind speed reaching 40 - 50 kmph gusting to 60 kmph likely to prevail along and off north Gujarat coast & adjoining northeast Arabian Sea, along and off Konkan & Goa coasts, over Gulf of Mannar and adjoining Comorin area, along and off Sri-Lanka coast, over southwest Bay of Bengal & adjoining parts of southeast, westcentral Bay of Bengal and over Andaman sea.



13 August (Day 2)

- ❖ **Heavy to Very Heavy Rainfall with isolated Extremely Heavy Rainfall** very likely at isolated places over Uttarakhand.
- ❖ **Heavy to Very Heavy Rainfall** very likely at isolated places over Andhra Pradesh, Bihar, Chhattisgarh, Himachal Pradesh, Odisha, Sub Himalayan West Bengal & Sikkim, Telangana, Uttar Pradesh and Vidarbha.
- ❖ **Heavy Rainfall** very likely at isolated places over Arunachal Pradesh, Assam & Meghalaya, East Madhya Pradesh, Haryana, Chandigarh & Delhi, Jammu-Kashmir-Ladakh-Gilgit-Baltistan-Muzaffarabad, Karnataka, Konkan & Goa, Madhya Maharashtra, Nagaland, Manipur, Mizoram and Tripura, Punjab and Tamil Nadu Puducherry & Karaikal.
- ❖ **Thundersquall with wind speed reaching(50-60kmph)** very likely at isolated places over Andaman & Nicobar Islands.
- ❖ **Thunderstorm accompanied with lightning & gusty winds(30-40kmph)** very likely at isolated places over Bihar, Interior Karnataka, Jammu-Kashmir-Ladakh-Gilgit-Baltistan-Muzaffarabad and Jharkhand.
- ❖ **Thunderstorm accompanied with Lightning** very likely at isolated places over Andhra Pradesh, Arunachal Pradesh, Assam & Meghalaya, Chhattisgarh, Gangetic West Bengal, Kerala & Mahe, Konkan & Goa, Madhya Pradesh, Maharashtra, Nagaland, Manipur, Mizoram and Tripura, Odisha, Tamil Nadu Puducherry & Karaikal, Telangana, Uttar Pradesh and Uttarakhand.
- ❖ **Strong Surface Winds** very likely at isolated places over Andhra Pradesh, Konkan & Goa and Telangana.
- ❖ **Squally wind with speed reaching 45 kmph to 55 kmph gusting to 65 kmph** is likely to prevail along and off Somalia, Oman coasts, most parts of westcentral Arabian sea, few parts of southwest Arabian Sea, some parts of northwest

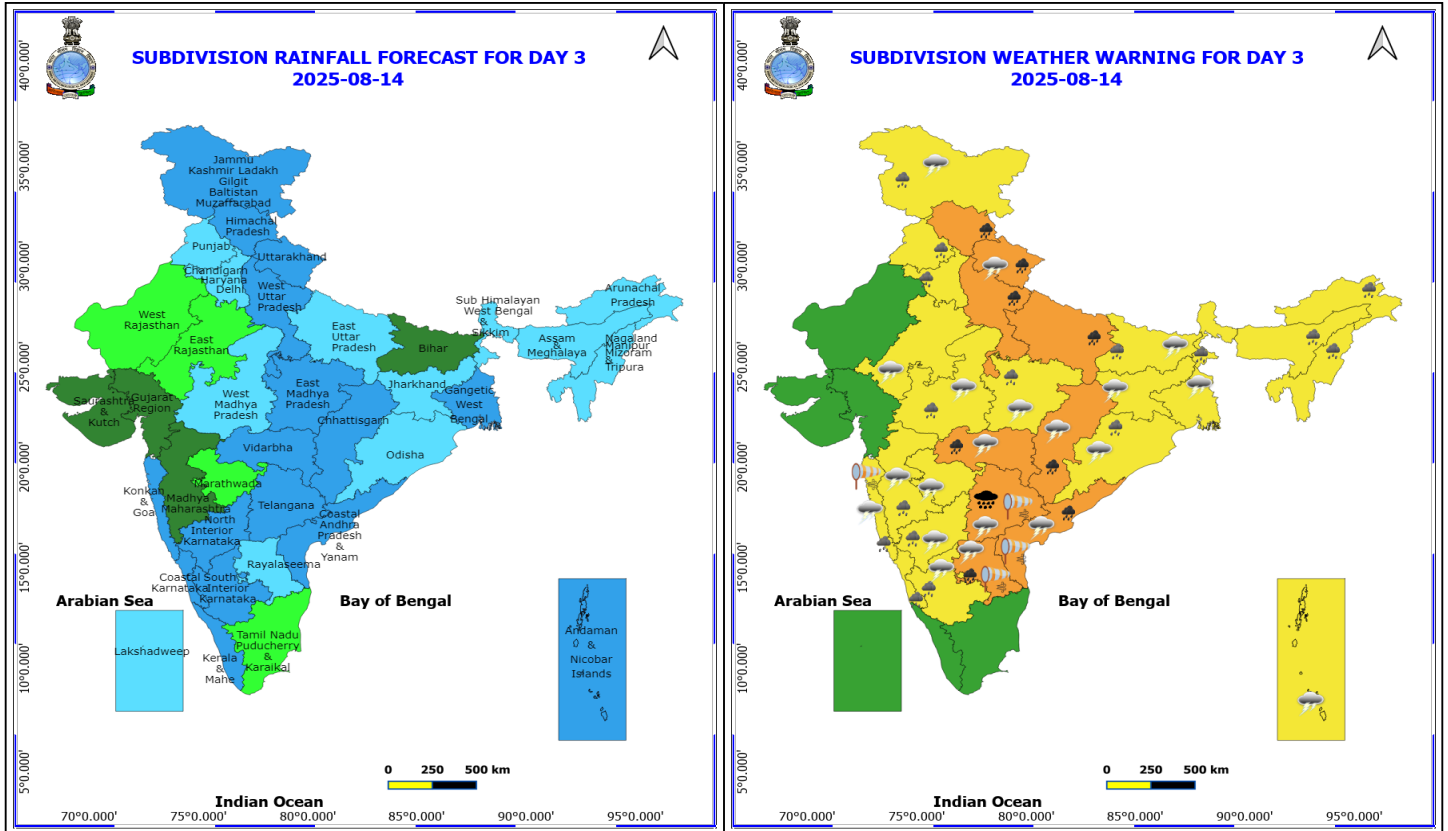
***Red color warning does not mean "Red Alert" Red color warning means "Take Action"**
Forecast and warning for any day is valid from 0830 hours IST of day till 0830 hours IST of next day
For more details kindly visit <https://mausam.imd.gov.in> or contact 011-2434-4599

(Service to the nation since 1875)



Arabian sea.

❖ Squally weather with wind speed reaching 40 - 50 kmph gusting to 60 kmph likely to prevail along and off north Gujarat coast & adjoining northeast & eastcentral Arabian Sea, along and off konkan & Goa coasts, over Gulf of Mannar and adjoining Comorin area, along and off Sri-Lanka coast, over south & central Bay of Bengal & adjoining northwest Bay of Bengal, over Andaman sea, along and off Andhra Pradesh, Odisha coast, adjoining sea areas.



14 August (Day 3)

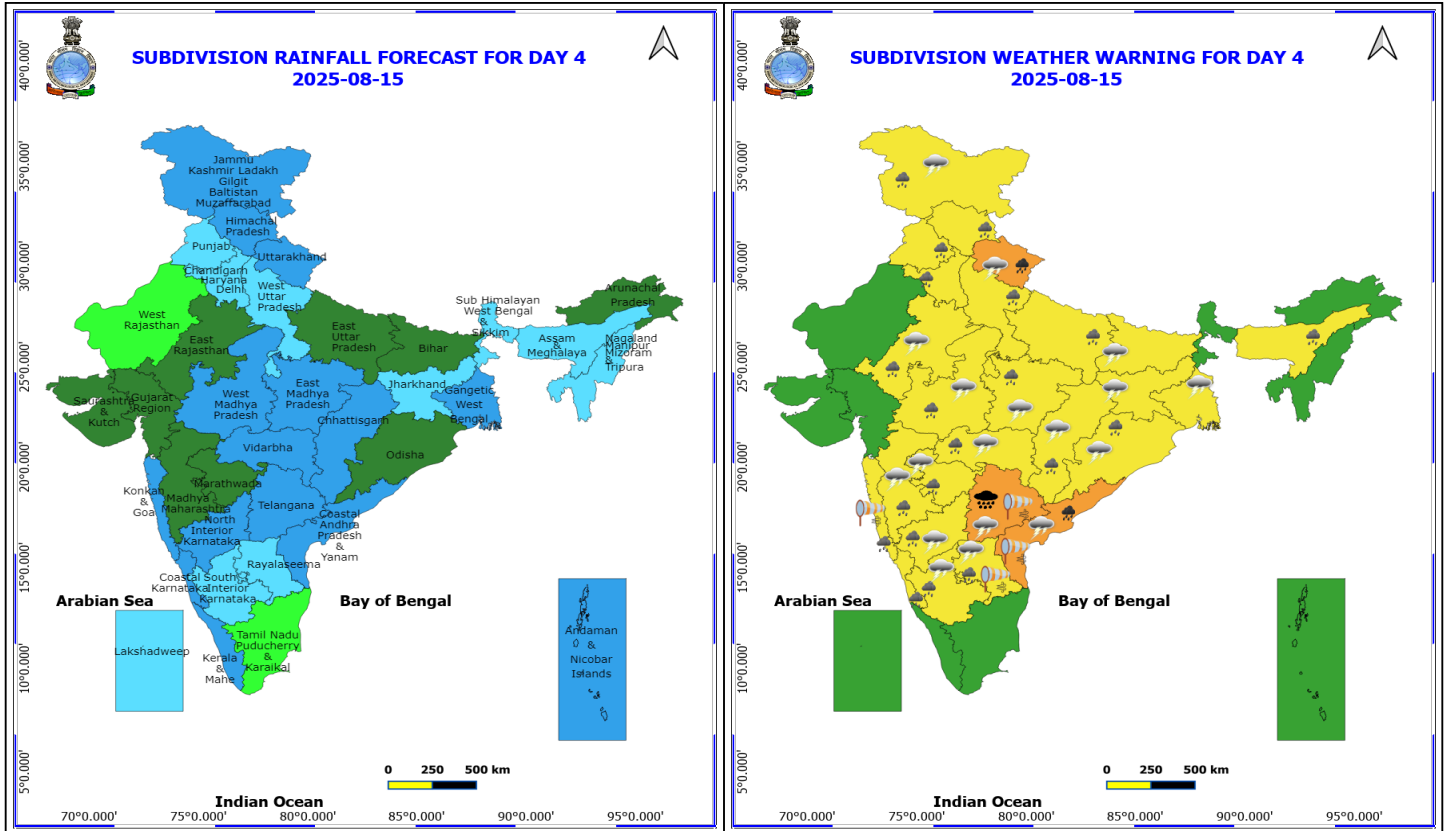
- ❖ **Heavy to Very Heavy Rainfall with isolated Extremely Heavy Rainfall** very likely at isolated places over Telangana.
- ❖ **Heavy to Very Heavy Rainfall** very likely at isolated places over Andhra Pradesh, Chhattisgarh, Himachal Pradesh, Uttar Pradesh, Uttarakhand and Vidarbha.
- ❖ **Heavy Rainfall** very likely at isolated places over Arunachal Pradesh, Assam & Meghalaya, Bihar, Haryana, Chandigarh & Delhi, Jammu-Kashmir-Ladakh-Gilgit-Baltistan-Muzaffarabad, Karnataka, Konkan & Goa, Madhya Maharashtra, Madhya Pradesh, Nagaland, Manipur, Mizoram and Tripura, Odisha, Punjab and Sub Himalayan West Bengal & Sikkim.
- ❖ **Thunderstorm accompanied with lightning & gusty winds(30-40kmph)** very likely at isolated places over Andaman & Nicobar Islands, Bihar, Interior Karnataka, Jammu-Kashmir-Ladakh-Gilgit-Baltistan-Muzaffarabad and Jharkhand.
- ❖ **Thunderstorm accompanied with Lightning** very likely at isolated places over Andhra Pradesh, Chhattisgarh, East Rajasthan, Gangetic West Bengal, Konkan & Goa, Madhya Pradesh, Maharashtra, Odisha, Telangana and Uttarakhand.
- ❖ **Strong Surface Winds** very likely at isolated places over Andhra Pradesh, Konkan & Goa and Telangana.
- ❖ Squally wind with speed reaching 45 kmph to 55 kmph gusting to 65 kmph is likely to prevail along and off Somalia, Oman coasts, most parts of westcentral Arabian sea & adjoining east central & northwest Arabian sea, some parts of southwest Arabian Sea
- ❖ Squally weather with wind speed reaching 40 - 50 kmph gusting to 60 kmph likely to prevail along and off along

***Red color warning does not mean "Red Alert" Red color warning means "Take Action"**
Forecast and warning for any day is valid from 0830 hours IST of day till 0830 hours IST of next day
For more details kindly visit <https://mausam.imd.gov.in> or contact 011-2434-4599

(Service to the nation since 1875)



and off konkan & Goa coasts, over Gulf of Mannar and adjoining Comorin area, along and off Sri-Lanka coast, over south & central Bay of Bengal & adjoining, some parts of north Bay of Bengal, over Andaman sea, along and off Andhra Pradesh, Odisha coast, adjoining sea areas.



15 August (Day 4)

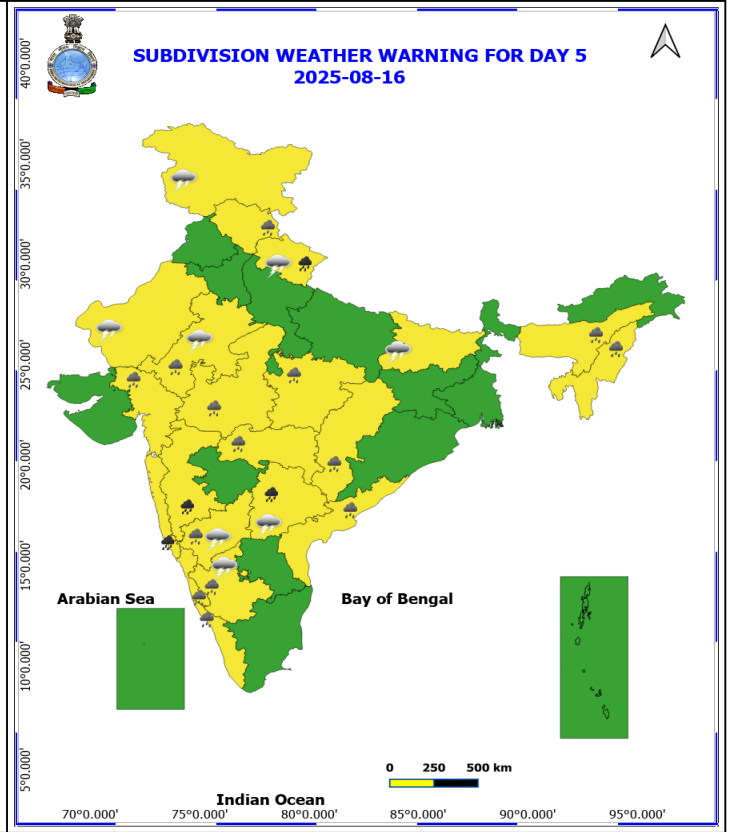
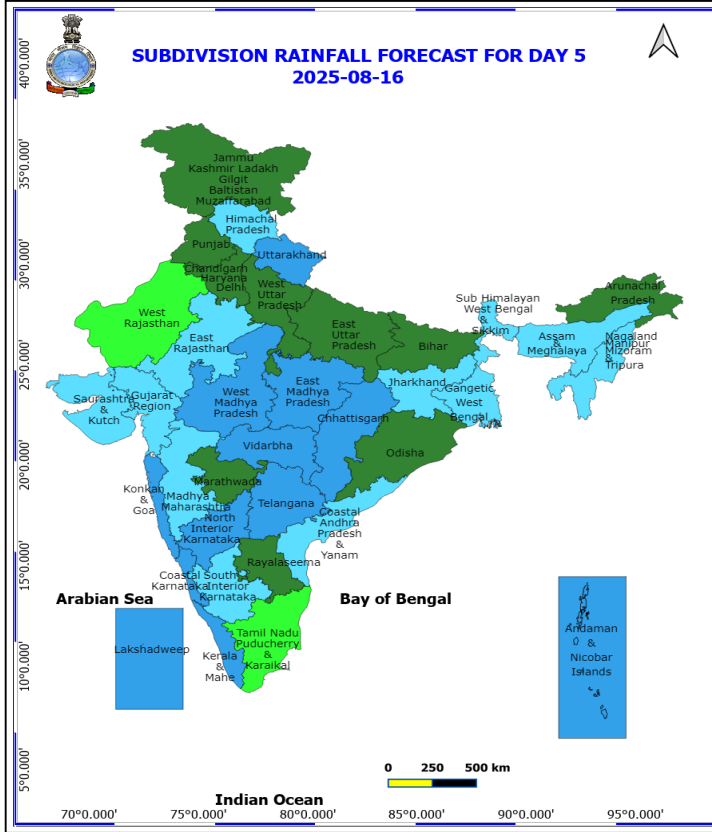
- ❖ **Heavy to Very Heavy Rainfall with isolated Extremely Heavy Rainfall** likely at isolated places over Telangana.
- ❖ **Heavy to Very Heavy Rainfall** likely at isolated places over Coastal Andhra Pradesh and Uttarakhand.
- ❖ **Heavy Rainfall** likely at isolated places over Assam & Meghalaya, Chhattisgarh, East Rajasthan, Haryana, Chandigarh & Delhi, Himachal Pradesh, Jammu-Kashmir-Ladakh-Gilgit-Baltistan-Muzaffarabad, Karnataka, Konkan & Goa, Madhya Pradesh, Maharashtra, Odisha, Punjab, Rayalaseema and Uttar Pradesh.
- ❖ **Thunderstorm accompanied with lightning & gusty winds(30-40kmph)** likely at isolated places over Bihar, Interior Karnataka, Jammu-Kashmir-Ladakh-Gilgit-Baltistan-Muzaffarabad and Jharkhand.
- ❖ **Thunderstorm accompanied with Lightning** likely at isolated places over Andhra Pradesh, Chhattisgarh, East Rajasthan, Gangetic West Bengal, Madhya Pradesh, Maharashtra, Odisha, Telangana and Uttarakhand.
- ❖ **Strong Surface Winds** likely at isolated places over Andhra Pradesh, Konkan & Goa and Telangana.

Squally wind with speed reaching 45 kmph to 55 kmph gusting to 65 kmph is likely to prevail along and off Somalia, Oman coasts, most parts of westcentral Arabian sea & adjoining east central & northwest Arabian sea, some parts of southwest Arabian Sea

Squally weather with wind speed reaching 40 - 50 kmph gusting to 60 kmph likely to prevail along and off along and off konkan & Goa coasts, over Gulf of Mannar and adjoining Comorin area, along and off Sri-Lanka coast, over south & central Bay of Bengal & adjoining, some parts of north Bay of Bengal, along and off Andhra Pradesh, Odisha coast, adjoining sea areas.

***Red color warning does not mean "Red Alert" Red color warning means "Take Action"**
Forecast and warning for any day is valid from 0830 hours IST of day till 0830 hours IST of next day
For more details kindly visit <https://mausam.imd.gov.in> or contact 011-2434-4599

(Service to the nation since 1875)



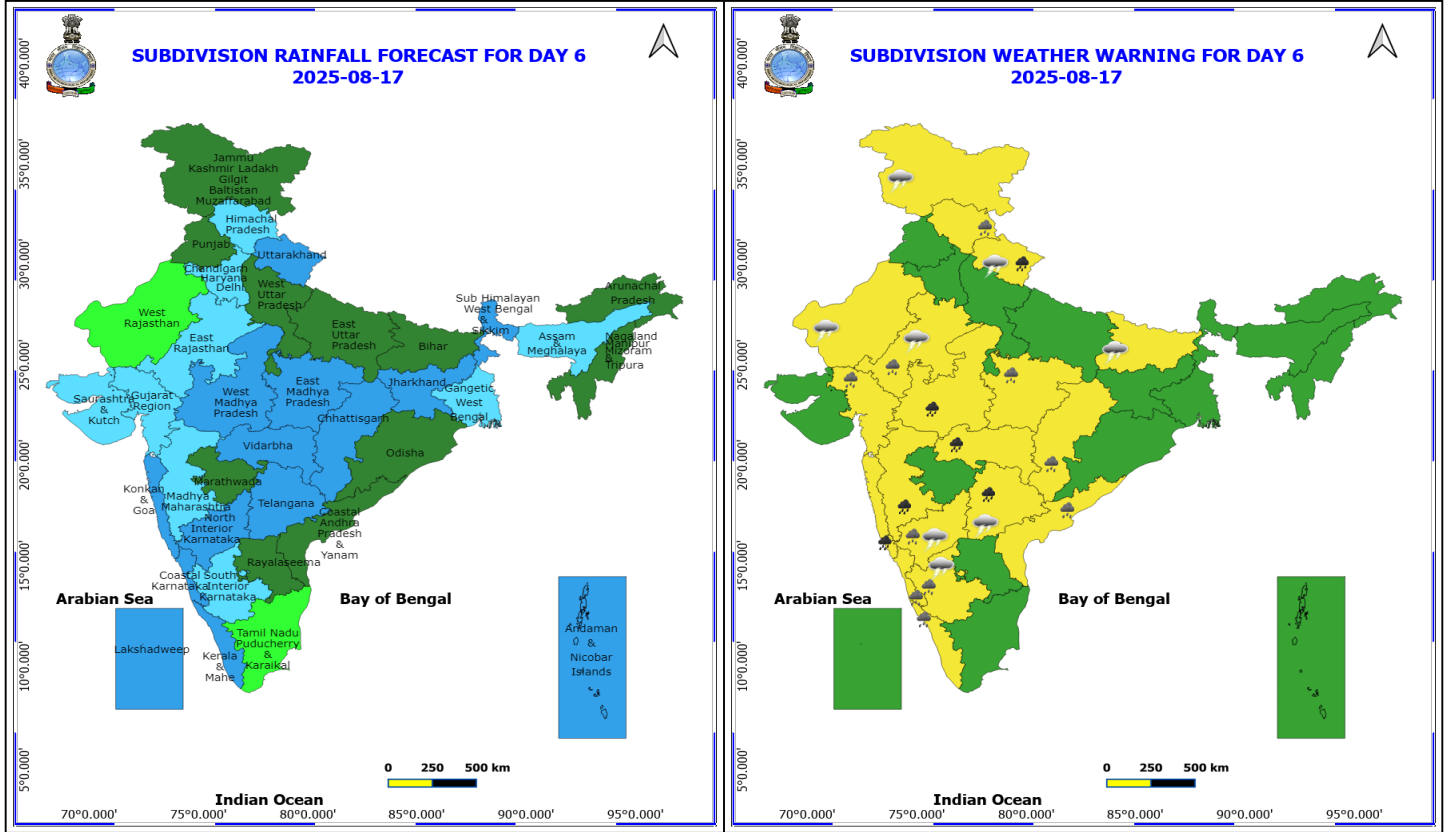
16 August (Day 5)

- ❖ **Heavy to Very Heavy Rainfall** likely at isolated places over Konkan & Goa, Madhya Maharashtra, Telangana and Uttarakhand.
- ❖ **Heavy Rainfall** likely at isolated places over Assam & Meghalaya, Chhattisgarh, Coastal Andhra Pradesh, East Rajasthan, Gujarat Region, Himachal Pradesh, Karnataka, Kerala & Mahe, Madhya Pradesh, Nagaland, Manipur, Mizoram and Tripura and Vidarbha.
- ❖ **Thunderstorm accompanied with lightning & gusty winds(30-40kmph)** likely at isolated places over Bihar, Interior Karnataka and Jammu-Kashmir-Ladakh-Gilgit-Baltistan-Muzaffargarh.
- ❖ **Thunderstorm accompanied with Lightning** likely at isolated places over Rajasthan, Telangana and Uttarakhand.

No Fishermen Warning

***Red color warning does not mean "Red Alert" Red color warning means "Take Action"**
Forecast and warning for any day is valid from 0830 hours IST of day till 0830 hours IST of next day
For more details kindly visit <https://mausam.imd.gov.in> or contact 011-2434-4599

(Service to the nation since 1875)



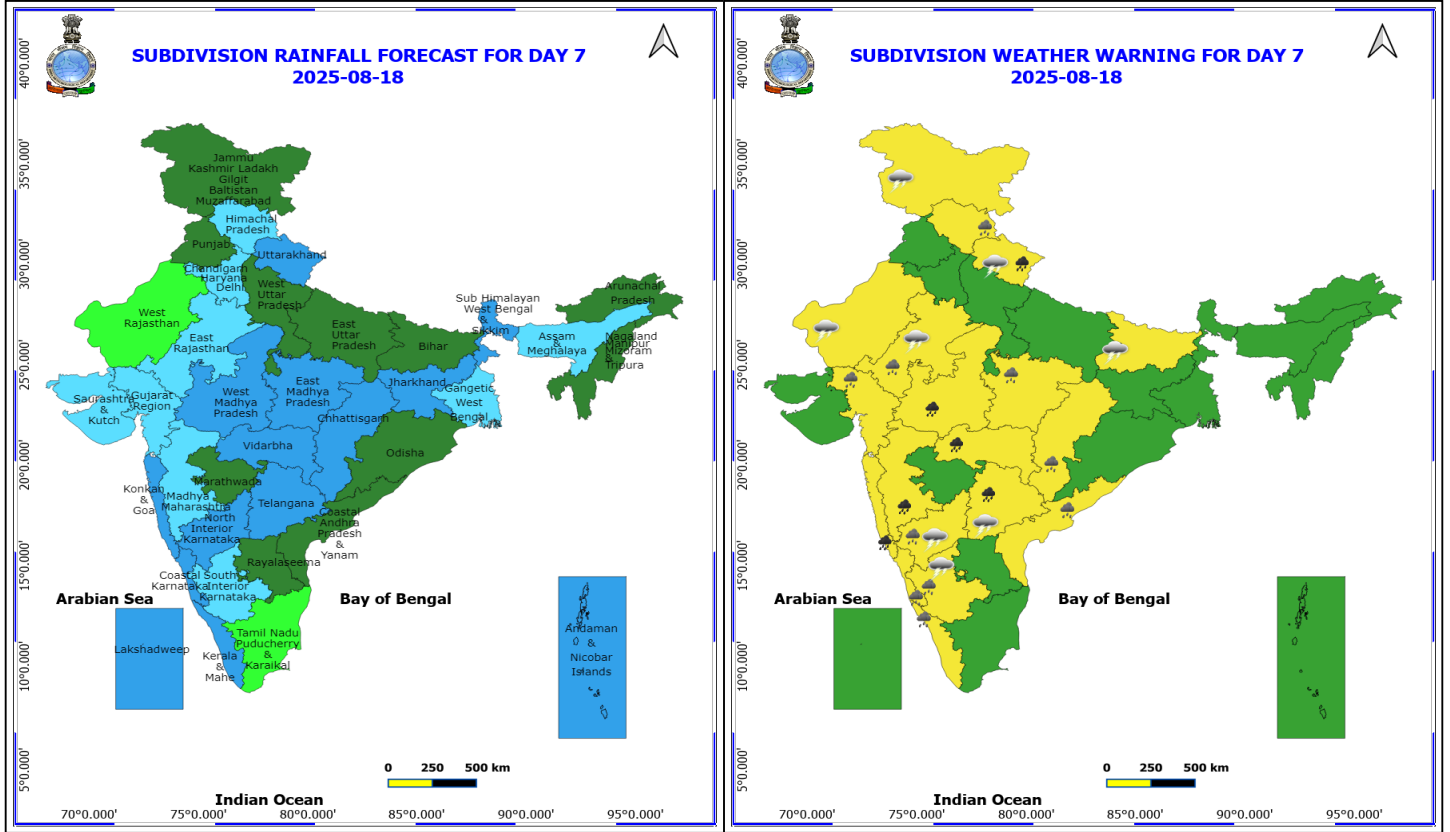
17 August (Day 6)

- ❖ **Heavy to Very Heavy Rainfall** likely at isolated places over Konkan & Goa, Madhya Maharashtra, Telangana, Uttarakhand, Vidarbha and West Madhya Pradesh.
- ❖ **Heavy Rainfall** likely at isolated places over Chhattisgarh, Coastal Andhra Pradesh, East Madhya Pradesh, East Rajasthan, Gujarat Region, Himachal Pradesh, Karnataka and Kerala & Mahe.
- ❖ **Thunderstorm accompanied with lightning & gusty winds(30-40kmph)** likely at isolated places over Bihar, Interior Karnataka and Jammu-Kashmir-Ladakh-Gilgit-Baltistan-Muzaffarabad.
- ❖ **Thunderstorm accompanied with Lightning** likely at isolated places over Rajasthan, Telangana and Uttarakhand.

No Fishermen Warning

***Red color warning does not mean "Red Alert" Red color warning means "Take Action"**
Forecast and warning for any day is valid from 0830 hours IST of day till 0830 hours IST of next day
For more details kindly visit <https://mausam.imd.gov.in> or contact 011-2434-4599

(Service to the nation since 1875)



18 August (Day 7)

- ❖ **Heavy to Very Heavy Rainfall** likely at isolated places over Konkan & Goa, Madhya Maharashtra, Telangana and Uttarakhand.
- ❖ **Heavy Rainfall** likely at isolated places over Assam & Meghalaya, Chhattisgarh, Coastal Andhra Pradesh, East Rajasthan, Gujarat Region, Himachal Pradesh, Karnataka, Kerala & Mahe, Madhya Pradesh, Nagaland, Manipur, Mizoram and Tripura and Vidarbha.
- ❖ **Thunderstorm accompanied with lightning & gusty winds(30-40kmph)** likely at isolated places over Bihar, Interior Karnataka and Jammu-Kashmir-Ladakh-Gilgit-Baltistan-Muzaffarabad.
- ❖ **Thunderstorm accompanied with Lightning** likely at isolated places over Rajasthan, Telangana and Uttarakhand.

No Fishermen Warning

Flash Flood Warnings

24 hours Outlook for the Flash Flood Risk (FFR) till 0530 IST of 13-08-2025 :

Moderate to High flash flood risk likely over few watersheds & neighbourhoods of following Met Sub-divisions during next 24 hours.

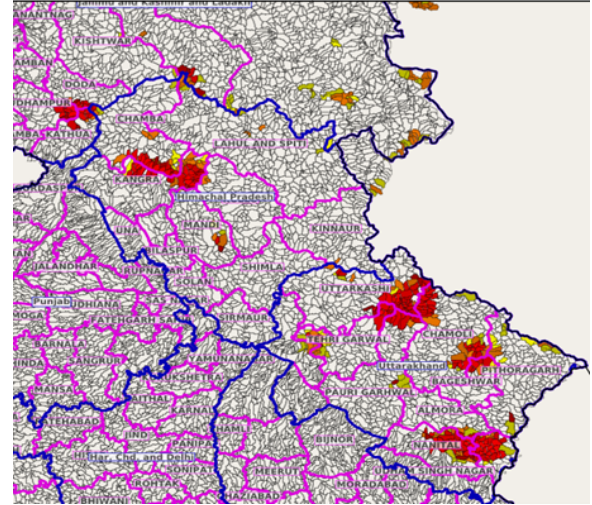
Himachal Pradesh - Chamba, Kangra, Kinnaur, Lahul&Spiti and Mandi districts.

Jammu & Kashmir & Ladakh - Doda, Kathua, Udhampur, Kargil and Leh And Ladakh districts.

Uttarakhand - Almora, Bageshwar, Chamoli, Champawat, Dehradun, Nanital, Pauri Garhwal, Pithoragarh, Rudraprayag, Tehri Garwal and Uttarkashi districts.

Surface runoff/ Inundation may occur at some fully saturated soils & low-lying areas over Area of Concern (AoC) as shown in map due to expected rainfall occurrence in next 24 hours.s.

Product: GFS FFR | Timescale: 24-hr | Region: "INDIA"
Product Date: 2025-08-12 00:00 UTC | Valid Date: 2025-08-13 00:00 UTC



24 hours Outlook for the Flash Flood Risk (FFR) till 0530 IST of 13-08-2025 :

Low to Moderate flash flood risk likely over few watersheds & neighbourhoods of following Met Sub-divisions during next 24 hours.

Arunachal Pradesh - Changlang, Dibang Valley, East Kameng, Lohit, Lower Subansiri, Papum-Pare, Tawang, Tirap, West Kameng, West Siang, Anjaw and Upper Siang districts.

Assam & Meghalaya - Karbi Analog, Kokrajhar, N.C Hills, Karimganj, East Garo Hills, Ri Bhoi, South Garo Hills, West Garo Hills, West Khasi Hills, Dhubri and Jaintia Hills districts.

Sub-Himalayan West Bengal & Sikkim - East Sikkim, North Sikkim, West Sikkim, Darjeeling, Jalpaiguri and Kochbihar districts.

Surface runoff/ Inundation may occur at some fully saturated soils & low-lying areas over Area of Concern (AoC) as shown in map due to expected rainfall occurrence in next 24 hours.

Product: GFS FFR | Timescale: 24-hr | Region: "INDIA"
Product Date: 2025-08-12 00:00 UTC | Valid Date: 2025-08-13 00:00 UTC

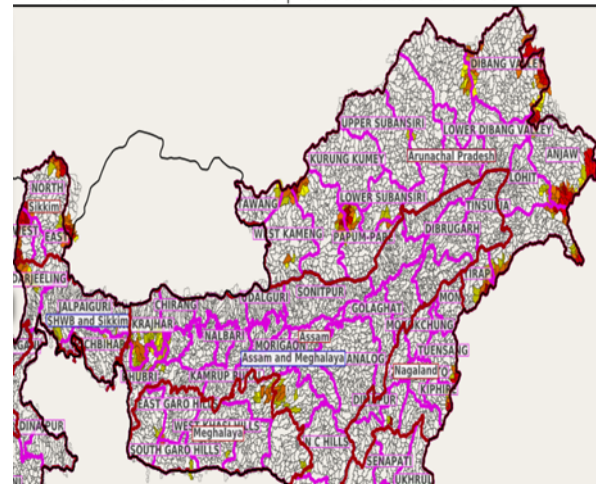




Table-1

7 Days Rainfall Forecast

S.No.	Subdivision	12- Aug	13- Aug	14- Aug	15- Aug	16- Aug	17- Aug	18- Aug
		Day 1	Day 2	Day 3	Day 4	Day 5	Day 6	Day 7
1	ANDAMAN & NICOBAR ISLANDS	WS	WS	WS	WS	WS	WS	WS
2	ARUNACHAL PRADESH	WS	FWS	FWS	SCT	SCT	SCT	SCT
3	ASSAM & MEHGHALAYA	WS	WS	FWS	FWS	FWS	FWS	FWS
4	N. M. M. & T.	WS	FWS	FWS	FWS	FWS	SCT	SCT
5	S.H. WEST BENGAL & SIKKIM	WS	WS	FWS	FWS	FWS	WS	WS
6	GANGETIC WEST BENGAL	FWS	FWS	WS	WS	FWS	FWS	FWS
7	ODISHA	FWS	WS	FWS	SCT	SCT	SCT	SCT
8	JHARKHAND	FWS	WS	FWS	FWS	FWS	WS	WS
9	BIHAR	WS	FWS	SCT	SCT	SCT	SCT	SCT
10	EAST UTTAR PRADESH	FWS	WS	FWS	SCT	SCT	SCT	SCT
11	WEST UTTAR PRADESH	SCT	FWS	WS	FWS	SCT	SCT	SCT
12	UTTARAKHAND	WS	WS	WS	WS	WS	WS	WS
13	HARYANA, CHD & DELHI	ISOL	SCT	FWS	FWS	SCT	FWS	FWS
14	PUNJAB	ISOL	SCT	FWS	FWS	SCT	SCT	SCT
15	HIMACHAL PRADESH	WS	WS	WS	WS	FWS	FWS	FWS
16	JAMMU AND KASHMIR AND LADAKH	SCT	FWS	WS	WS	SCT	SCT	SCT
17	WEST RAJASTHAN	ISOL	ISOL	ISOL	ISOL	ISOL	ISOL	ISOL
18	EAST RAJASTHAN	ISOL	ISOL	ISOL	SCT	FWS	FWS	FWS
19	WEST MADHYA PRADESH	SCT	FWS	FWS	WS	WS	WS	WS
20	EAST MADHYA PRADESH	FWS	WS	WS	WS	WS	WS	WS
21	GUJRAT REGION	SCT	SCT	SCT	SCT	FWS	FWS	FWS
22	SAURASHTRA & KUTCH	SCT	SCT	SCT	SCT	FWS	FWS	FWS
23	KONKAN & GOA	WS	WS	WS	WS	WS	WS	WS
24	MADHYA MAHARASHTRA	ISOL	ISOL	SCT	SCT	FWS	FWS	FWS
25	MARATHWADA	ISOL	ISOL	ISOL	SCT	SCT	SCT	SCT
26	VIDARBHA	FWS	WS	WS	WS	WS	WS	WS
27	CHATTISGARH	FWS	WS	WS	WS	WS	WS	WS
28	COASTAL ANDHRA PRADESH	FWS	FWS	WS	WS	FWS	SCT	SCT
29	TELANGANA	WS	WS	WS	WS	WS	WS	WS
30	RAYALASEEMA	FWS	FWS	FWS	FWS	SCT	SCT	SCT
31	TAMILNADU & PUDUCHERRY	SCT	SCT	ISOL	ISOL	ISOL	ISOL	ISOL
32	COSTAL KARNATAKA	WS	WS	WS	WS	WS	WS	WS
33	NORTH INTERIOR KARNATAKA	FWS	WS	WS	WS	WS	WS	WS
34	SOUTH INTERIOR KARNATAKA	FWS	WS	WS	FWS	FWS	FWS	FWS
35	KERALA	WS	WS	WS	WS	WS	WS	WS
36	LAKSHDWEEP	FWS	FWS	FWS	FWS	WS	WS	WS

Legend	Category	%Stations
WS	Widespread/Most Places	76-100
FWS	Fairly Widespread/Many Places	51-75
SCT	Scattered/ A Few Places	26-50
ISOL	Isolated Places	1-25
DRY	No Rain	0

*Red color warning does not mean "Red Alert" Red color warning means "Take Action"
Forecast and warning for any day is valid from 0830 hours IST of day till 0830 hours IST of next day
For more details kindly visit <https://mausam.imd.gov.in> or contact 011-2434-4599

(Service to the nation since 1875)

Fig. 1: Maximum Temperatures Dated 2025-08-12

Fig. 2: Departure of Maximum Temp. Dated 2025-08-12

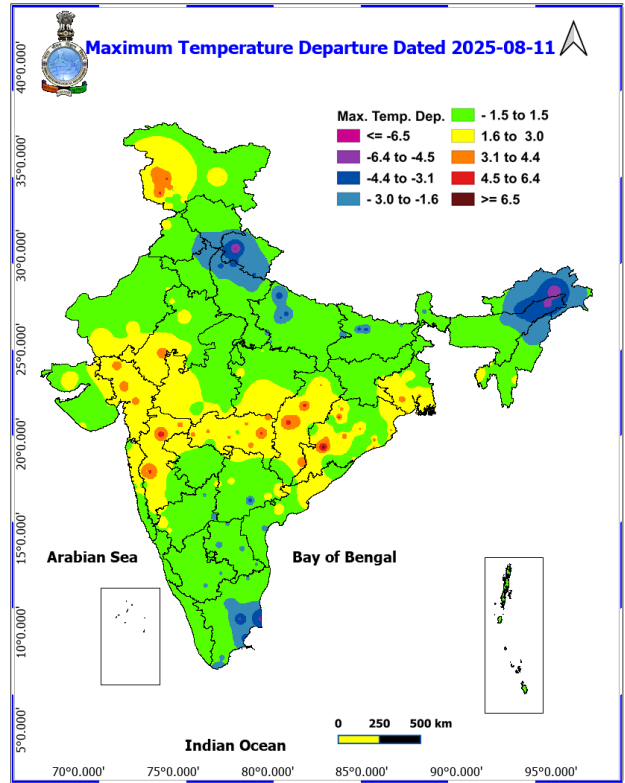
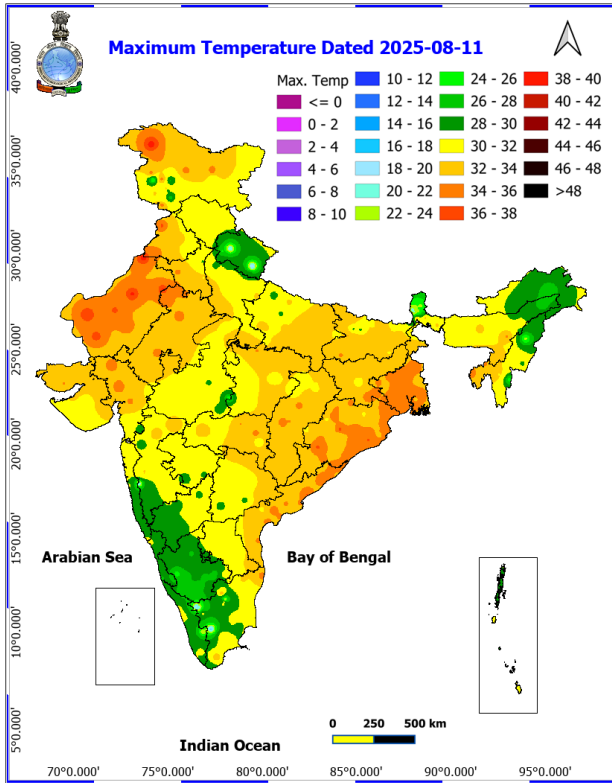
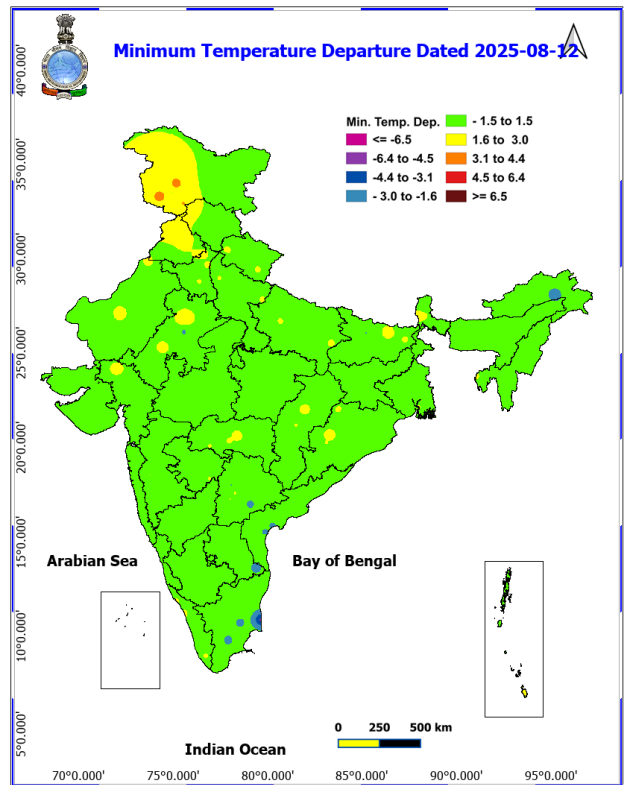
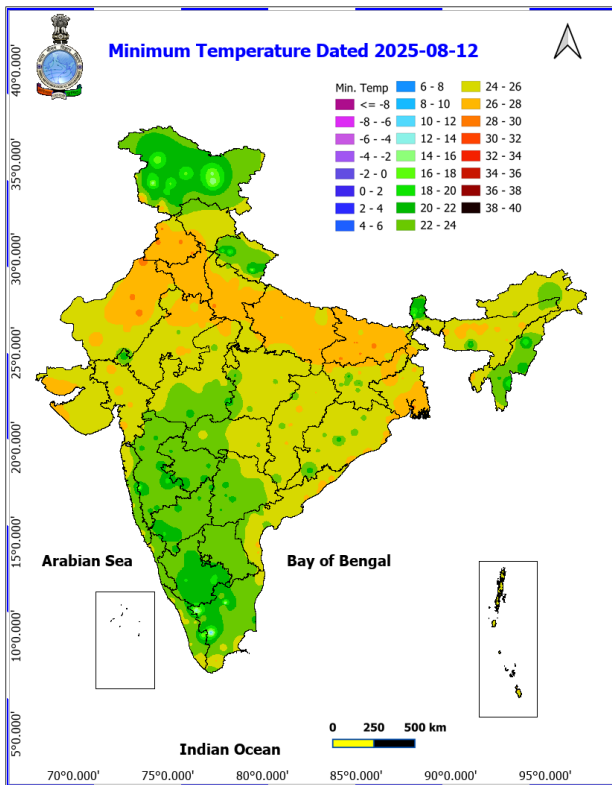
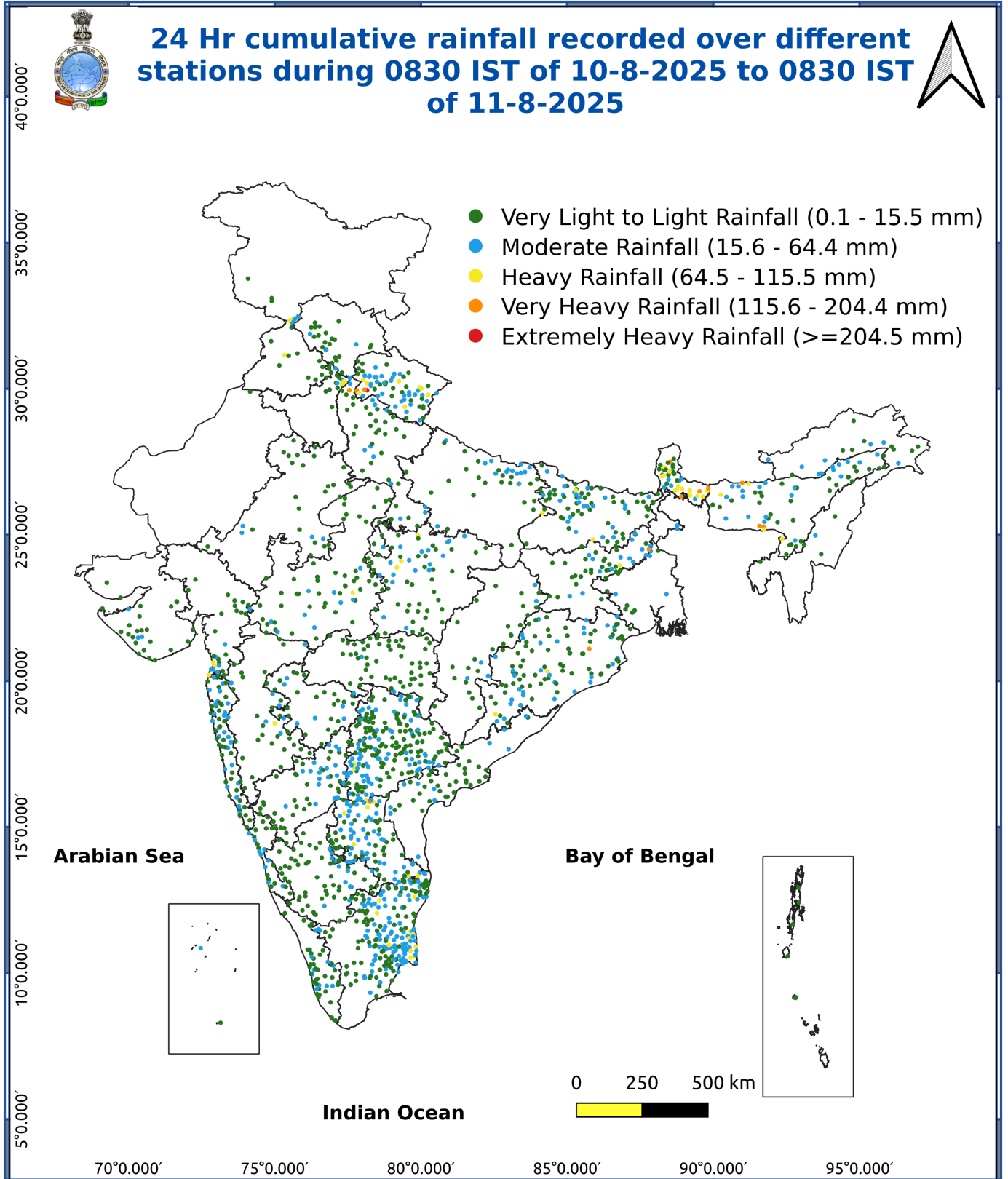


Fig. 3: Minimum Temperatures Dated 2025-08-12

Fig. 4: Departure of Minimum Temp. Dated 2025-08-12





- **Extremely heavy rainfall** very likely at isolated places over Jammu & Kashmir, Sub-Himalayan West Bengal & Sikkim & Arunachal Pradesh, Assam & Meghalaya on 12th; Uttarakhand on 13th; and Telangana on 14th & 15th August
- **Isolated very heavy rainfall** over Jammu-Kashmir on 12th; Himachal Pradesh during 12th-14th; Uttarakhand on during 12th, during 14th-17th; West Uttar Pradesh on 11th, 13th & 14th; East Uttar Pradesh, Rayalaseema, Vidarbha, Chhattisgarh on 13th & 14th; Coastal Andhra Pradesh & Yanam during 13th-15th, Telangana during 13th-17th; West Madhya Pradesh on 17th; Sub-Himalayan West Bengal & Sikkim on 13th; Bihar during 12th-13th, Odisha during 12th & 13th; Konkan & Goa, ghat areas of Madhya Maharashtra on 16th & 17th August.

Impact Expected

- Localized Flooding of roads, water logging in low lying areas and closure of underpasses mainly in urban areas of the above region.
- Occasional reduction in visibility due to heavy rainfall.
- Disruption of traffic in major cities due to water logging in roads leading to increased travel time.
- Minor damage to kutcha roads.
- Possibilities of damage to vulnerable structure.
- Localized Landslides/Mudslides/landslips/mudslips/landsinks/mudsinks.
- Damage to horticulture and standing crops in some areas due to inundation.
- It may lead to riverine flooding in some river catchments (for riverine flooding please visit Web page of CWC)

Action Suggested

- Check for traffic congestion on your route before leaving for your destination.
- Follow any traffic advisories that are issued in this regard.
- Avoid going to areas that face the water logging problems often.
- Avoid staying in vulnerable structure.

Agromet advisories for various parts of the country

Agromet advisories for likely impact of Heavy / Heavy to Very Heavy Rainfall

(Based on the IBF and advisories issued by different AMFUs)

- In **Uttarakhand**, make necessary arrangements to drain out excess water from the fields of already sown / transplanted rice, sugarcane, maize, black gram, green gram, groundnut, pigeon pea, finger millet, soybean and vegetables in **Bhabar and Terai Zone**; and from barnyard millet, finger millet, green gram and black gram in **Sub Humid Sub Tropic Zone**. In **Hill Zone**, strengthen the bunds to prevent surface runoff of water. Postpone sowing of vegetable pea till soil attains optimum moisture level. Maintain proper drainage channels in vegetable and crop fields. Undertake harvesting of matured capsicum fruits. Postpone sowing of vegetable pea until the soil attains optimum moisture, especially under excessive wet soil conditions.
- In **Himachal Pradesh**, provide proper drainage channels in maize, ginger, turmeric and vegetable fields in **Mid Hills Sub Humid Zone**; and rice, maize and vegetable fields in **Sub Montane and Low Hills Sub Tropical Zone**. In **High Hills Sub Temperate Wet Zone**, undertake harvesting of ripened tomato and cover the cauliflower nursery with plastic sheets to prevent damage from heavy rainfall.
- In **West Uttar Pradesh**, maintain proper drainage in fields of rice, pigeon pea, sugarcane and vegetable crops in **South Western Semi Arid Zone**.
- In **Bihar**, make provisions to drain out excess water from standing crops such as maize, nurseries of onion, chilli, and cauliflower in **North West Alluvial Plain Zone**; maize, finger millet, ragi, kodo, sava, china etc. in **North East Alluvial Zone**.
- In **Sub-Himalayan West Bengal**, make provision to drain out excess water from rice, ginger, vegetable fields and fruit orchards in **Hill Zone** and *aman* paddy and vegetable fields in **Terai Zone**. Cover the chilli seedlings with plastic to protect them from heavy rains in **Terai Zone**.
- In **Madhya Pradesh**, provide adequate drainage in the fields of maize, soybean, blackgram, cotton, and pigeon

*Red color warning does not mean "Red Alert" Red color warning means "Take Action"

Forecast and warning for any day is valid from 0830 hours IST of day till 0830 hours IST of next day

For more details kindly visit <https://mausam.imd.gov.in> or contact 011-2434-4599

(Service to the nation since 1875)

pea in **Vindhyan Plateau Zone**; maize, soybean, cotton, sugarcane and vegetables in **Satpura Plateau Zone**; rice, soybean, maize, sugarcane and vegetables in **Central Narmada Valley Zone** and soybean, pigeon pea, cotton and vegetables in **Nimar Valley Zone**.

- In **Arunachal Pradesh**, ensure proper drainage in rice, maize, finger millet, soybean, vegetables, and fruit orchards to avoid waterlogging. Provide strong support to fruit-bearing plants to prevent them from bending or breaking during heavy rains.
- In **Assam**, to prevent waterlogging, ensure proper drainage in *Sali* rice, green gram and pigeon pea fields and banana orchards in **Lower Brahmaputra Valley Zone**; *Sali* rice and sugarcane fields in **North Bank Plain Zone** and *Sali* rice fields in **Upper Brahmaputra Valley Zone**.
- In **Meghalaya**, ensure proper drainage in rice, maize, turmeric, chilli, okra and bitter gourd fields to prevent waterlogging. Provide staking/support to tall and fragile crops like banana, papaya, bottle gourd etc. to prevent lodging.
- In **Tamil Nadu**, ensure proper drainage in sorghum fields to prevent waterlogging, especially in heavy soils and low-lying areas. Ensure proper drainage around the coconut plants to avoid root rot.
- In **Telangana**, drain out excess water from rice nurseries and recently transplanted rice as well as from fields of cotton, maize, red gram, soybean, sugarcane, and vegetables.

Livestock / Fishery

- Keep the animals inside the shed during heavy rainfall and provide them balanced feed.
- Store feed and fodder in a safe place to prevent spoilage.
- Construct an outlet with proper netting around the ponds to drain out excess water, thereby preventing fish from escaping in case of overflow.

Agromet advisories for likely impact of Thunderstorm / Gusty Winds / Squally Winds

(Based on the IBF and advisories issued by different AMFUs)

- Provide mechanical support to horticultural crops and staking or support to vegetables and young fruit plants / fruit-bearing plants to avoid lodging due to strong winds.

Legends & abbreviations:

Region wise classification of meteorological Sub-Divisions:

Northwest India: Western Himalayan Region (Jammu-Kashmir-Ladakh-Gilgit-Baltistan-Muzaffarabad, Himachal Pradesh and Uttarakhand); Punjab, Haryana-Chandigarh-Delhi; West Uttar Pradesh, East Uttar Pradesh, West Rajasthan and East Rajasthan.

Central India: West Madhya Pradesh, East Madhya Pradesh, Vidarbha and Chhattisgarh.

East India: Bihar, Jharkhand, Sub-Himalayan West Bengal & Sikkim; Gangetic West Bengal, Odisha and Andaman & Nicobar Islands.

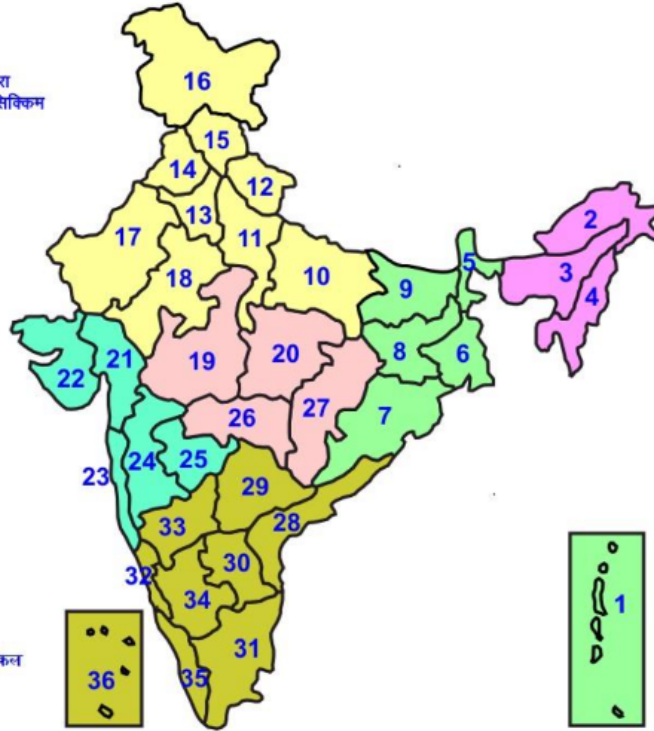
Northeast India: Arunachal Pradesh, Assam & Meghalaya and Nagaland, Manipur, Mizoram & Tripura.

West India: Gujarat Region, Saurashtra & Kutch, Konkan & Goa, Madhya Maharashtra and Marathawada.

South India: Coastal Andhra Pradesh & Yanam, Telangana, Rayalaseema, Coastal Karnataka, North Interior Karnataka, South Interior Karnataka, Kerala & Mahe, Tamil Nadu, Puducherry & Karaikal and Lakshadweep.

LEGENDS

- 1 अंडमान और निकोबार द्वीप समुह
- 2 अरुणाचल प्रदेश
- 3 असम और मेघालय
- 4 नागालैंड मनीपुर मीजोरम और त्रिपुरा
- 5 उप हिमालय पश्चिम बंगाल एवं सिक्किम
- 6 पश्चिम बंगाल
- 7 ओडिसा
- 8 झारखंड
- 9 बिहार
- 10 पूर्वी उत्तर प्रदेश
- 11 पश्चिम उत्तर प्रदेश
- 12 उत्तराखंड
- 13 हरियाणा चंडिगढ़ एवं दिल्ली
- 14 पंजाब
- 15 हिमाचल प्रदेश
- 16 जम्मू एवं कश्मीर एवं लद्दाख
- 17 पश्चिम राजस्थान
- 18 पूर्वी राजस्थान
- 19 पश्चिम मध्य प्रदेश
- 20 पूर्वी मध्य प्रदेश
- 21 गुजरात क्षेत्र
- 22 सौराष्ट्र एवं कच्छ
- 23 कोंकण एवं गोवा
- 24 मध्य महाराष्ट्र
- 25 मराठावाडा
- 26 विदर्भ
- 27 छत्तीसगढ़
- 28 तटीय आंध्र प्रदेश एवं यनम
- 29 तेलंगाना
- 30 रायलसीमा
- 31 तमिलनाडु, पुदुचेरी एवं कराईकल
- 32 तटिय कर्नाटक
- 33 आंतरिक उत्तरी कर्नाटक
- 34 आंतरिक दक्षिणी कर्नाटक
- 35 केरल एवं माहे
- 36 लक्षद्वीप



1. Andaman & Nicobar Islands
2. Arunachal Pradesh
3. Assam & Meghalaya
4. Nagaland, Manipur, Mizoram & Tripura
5. Sub-Himalayan West Bengal & Sikkim
6. Gangetic West Bengal
7. Orissa
8. Jharkhand
9. Bihar
10. East Uttar Pradesh
11. West Uttar Pradesh
12. Uttarakhand
13. Haryana, Chd & Delhi
14. Punjab
15. Himachal Pradesh
16. Jammu & Kashmir and Ladakh
17. West Rajasthan
18. East Rajasthan
19. West Madhya Pradesh
20. East Madhya Pradesh
21. Gujarat
22. Saurashtra
23. Konkan & Goa
24. Madhya Maharashtra
25. Marathawada
26. Vidharbha
27. Chhattisgarh
28. Coastal Andhra Pradesh & Yanam
29. Telangana
30. Rayalaseema
31. Tamilnadu, Puducherry & Karaikal
32. Coastal Karnataka
33. North Interior Karnataka
34. South Interior Karnataka
35. Kerala & Mahe
36. Lakshadweep

SPATIAL DISTRIBUTION (% of Stations reporting)

% Stations	Category	% Stations	Category
76-100	Widespread (WS/ Most Places)	26-50	Scattered (SCT/ A Few Places)
51-75	Fairly Widespread (FWS/ Many Places)	1-25	Isolated (ISOL)

Subdivision Colour

- NO WARNING
- WATCH (BE UPDATED)
- ALERT (BE PREPARED TO TAKE ACTION)
- WARNING (TAKE ACTION)

Probabilistic Forecast

Terms	Probability of Occurrence (%)
Unlikely	< 25
Likely	25 - 50
Very Likely	50 - 75
Most Likely	> 75

- | | | | |
|--------------------------|-----------------|----------------------|--------------------|
| Heavy Rain | Very Heavy Rain | Extremely Heavy Rain | Heavy Snow |
| Thunderstorm & Lightning | Hailstorm | Dust Storm | Dust Raising Winds |
| Strong surface winds | Heat Wave | Hot Day | Warm Night |
| Cold Wave | Cold Day | Ground Frost | Fog |
| Hot & Humid | | | |

*Red color warning does not mean "Red Alert" Red color warning means "Take Action"

Forecast and warning for any day is valid from 0830 hours IST of day till 0830 hours IST of next day

For more details kindly visit <https://mausam.imd.gov.in> or contact 011-2434-4599

(Service to the nation since 1875)

LEGENDS

WARNING

WARNING (TAKE ACTION)
ALERT (BE PREPARED)
WATCH (BE UPDATED)
NO WARNING (NO ACTION)

Probabilistic Forecast

Terms	Probability of Occurrence (%)
Unlikely	< 25
Likely	25 - 50
Very Likely	50 - 75
Most Likely	> 75



Rain/ Snow *

Heavy: 64.5 to 115.5 mm/cm *
Very Heavy: 115.6 to 204.4 mm/cm*
Extremely Heavy: > 204.4 mm/cm *



Heat Wave

When maximum temperature of a station reaches $\geq 40^{\circ}\text{C}$ for plains and $\geq 30^{\circ}\text{C}$ for hilly regions
(a) Based on Departure from normal

Heat Wave: Maximum Temperature Departure from normal 4.5°C to 6.4°C .
Severe Heat Wave: Maximum Temperature Departure from normal $\geq 6.5^{\circ}\text{C}$

(b). Based on Actual maximum temperature

Heat Wave: When actual maximum temperature $\geq 45^{\circ}\text{C}$.
Severe Heat Wave: When actual maximum temperature $\geq 47^{\circ}\text{C}$

(c). Criteria for heat wave for coastal stations

When maximum temperature departure is $> 4.5^{\circ}\text{C}$ from normal. Heat Wave may be described provided maximum temperature $\geq 37^{\circ}\text{C}$



Warm Night

When maximum temperature remains 40°C

Warm Night: When minimum temperature departure 4.5°C to 6.4°C .
Severe Warm Night: When minimum temperature departure $> 6.4^{\circ}\text{C}$.



Cold Wave

When minimum temperature of a station $\leq 10^{\circ}\text{C}$ for plains and $\leq 0^{\circ}\text{C}$ for hilly regions.

(a). Based on departure

Cold Wave: Minimum Temperature Departure from normal -4.5°C to -6.4°C .
Severe Cold Wave: Minimum Temperature Departure from normal $\leq -6.5^{\circ}\text{C}$

(b) Based on actual Minimum Temperature (for Plains only)

Cold Wave : When Minimum Temperature is $\leq 4.0^{\circ}\text{C}$
Severe Cold Wave: When Minimum Temperature is $\leq 2.0^{\circ}\text{C}$

(c) For Coastal Stations

When Minimum Temperature departure is $\leq -4.5^{\circ}\text{C}$ & actual Minimum Temperature is $\leq 15^{\circ}\text{C}$



Cold Day

When minimum temperature of a station $\leq 10^{\circ}\text{C}$ for plains and $\leq 0^{\circ}\text{C}$ for hilly regions
Based on departure

Cold Day: Maximum Temperature Departure from normal -4.5°C to -6.4°C .
Severe Cold Day: Maximum Temperature Departure from normal $\leq -6.5^{\circ}\text{C}$



Fog

Phenomenon of small droplets suspended in air and the horizontal visibility $< 1\text{km}$

Moderate Fog: When the visibility between 500-200 metres
Dense Fog: when the visibility between 50- 200 metres
Very Dense Fog: when the visibility < 50 metres



Thunderstorm

Sudden electrical discharges manifested by a flash of light (Lightning) and a sharp rumbling sound (thunder)



Dust/Sand Storm

An ensemble of particles of dust or sand energetically lifted to great heights by a strong and turbulent wind.



Frost

Ice deposits on ground

Air temperature $\leq 4^{\circ}\text{C}$ (over Plains)



Squall

A strong wind that rises suddenly, lasts for atleast 1 minute.

Moderate: Wind speed 52-61 kmph
Severe: Wind speed 62-87 kmph
Very Severe: Wind speed > 87 kmph



Sea State

Effect of various waves in the sea over specific area

Rough to very rough: Wind speed 41-62 kmph (22-33 knots) & Wave height 2.5-6 metre
High to very high: Wind speed 63-117 kmph (34-63 knots) & Wave height 6-14 metre
Phenomenal: Wind speed > 117 kmph (> 63 knots) & Wave height > 14 metre



Cyclone

Cyclonic Storm: Wind speed 62-87 kmph (34-47 knots)
Severe Cyclonic Storm: Wind speed 88-117 kmph (48-63 knots)
Very Severe Cyclonic Storm: Wind speed 118-165 kmph (64 - 89 knots)
Extremely Severe Cyclonic Storm: Wind speed 166-220 kmph (90 -119 knots)
Super Cyclone Storm: Wind speed > 220 kmph (> 119 knots)

*Red color warning does not mean "Red Alert" Red color warning means "Take Action"

Forecast and warning for any day is valid from 0830 hours IST of day till 0830 hours IST of next day

For more details kindly visit <https://mausam.imd.gov.in> or contact 011-2434-4599

(Service to the nation since 1875)