

2026-01-20

Time of Issue: 08:13:00 hours IST
(Morning)

ALL INDIA WEATHER SUMMARY AND FORECAST BULLETIN

Significant Weather Features

Weather Forecast and warning:

- Isolated to scattered light to moderate rainfall/snowfall likely over Jammu-Kashmir-Ladakh-Gilgit-Baltistan-Muzaffarabad on 20th -21st; Fairly widespread to widespread rainfall/snowfall over Western Himalayan Region during 22nd -24th with reduction in intensity on 25th January; with **isolated heavy falls over Kashmir valley on 22nd & 23rd and higher reaches of Himachal Pradesh on 23rd January.**
- Scattered to Fairly widespread light to moderate rainfall likely over Punjab during 22nd-25th; Isolated to scattered light to moderate rainfall over Haryana, Chandigarh, West Uttar Pradesh during 22nd - 25th; East Uttar Pradesh on 23rd & 24th and Rajasthan on 22nd & 23rd January.
- Thunderstorm activity accompanied with **lightning & gusty winds (speed 40-50 kmph)** likely over Jammu-Kashmir-Ladakh-Gilgit-Baltistan-Muzaffarabad on 23rd; with **gusty winds (speed 30-40 kmph)** over Punjab, Haryana, Chandigarh, Uttar Pradesh and Rajasthan on 22nd & 23rd; with **lightning** over Himachal Pradesh on 22nd & 23rd; Uttarakhand on 23rd January.

Forecast of minimum temperatures:

- No significant change in minimum temperatures likely over Northwest India during next 3 days; gradual rise by 2-4°C during subsequent 2 days and gradual fall by 2-3°C during subsequent 2 days.
- Gradual rise in minimum temperatures by 2-4°C likely over Maharashtra during next 3 days and no significant change during subsequent 4 days.
- No significant change in minimum temperatures likely over rest parts of the country.

Dense Fog, Cold day & Cold wave Warnings:

- **Dense to very dense fog conditions very likely to prevail in morning/night hours in isolated pockets over Punjab till 20th and Dense fog in isolated pockets on 21st January 2026.**
- **Dense fog** conditions also likely during morning/night hours in isolated pockets over Haryana, Chandigarh till 21st; Uttar Pradesh till 20th and Bihar till 21st January.
- **Cold wave conditions** very likely in isolated pockets of Himachal Pradesh on 20th & 21st January.

***Red color warning does not mean "Red Alert" Red color warning means "Take Action"**

Forecast and warning for any day is valid from 0830 hours IST of day till 0830 hours IST of next day

For more details kindly visit <https://mausam.imd.gov.in> or contact 011-2434-4599

(Service to the nation since 1875)

Main Weather Observations:

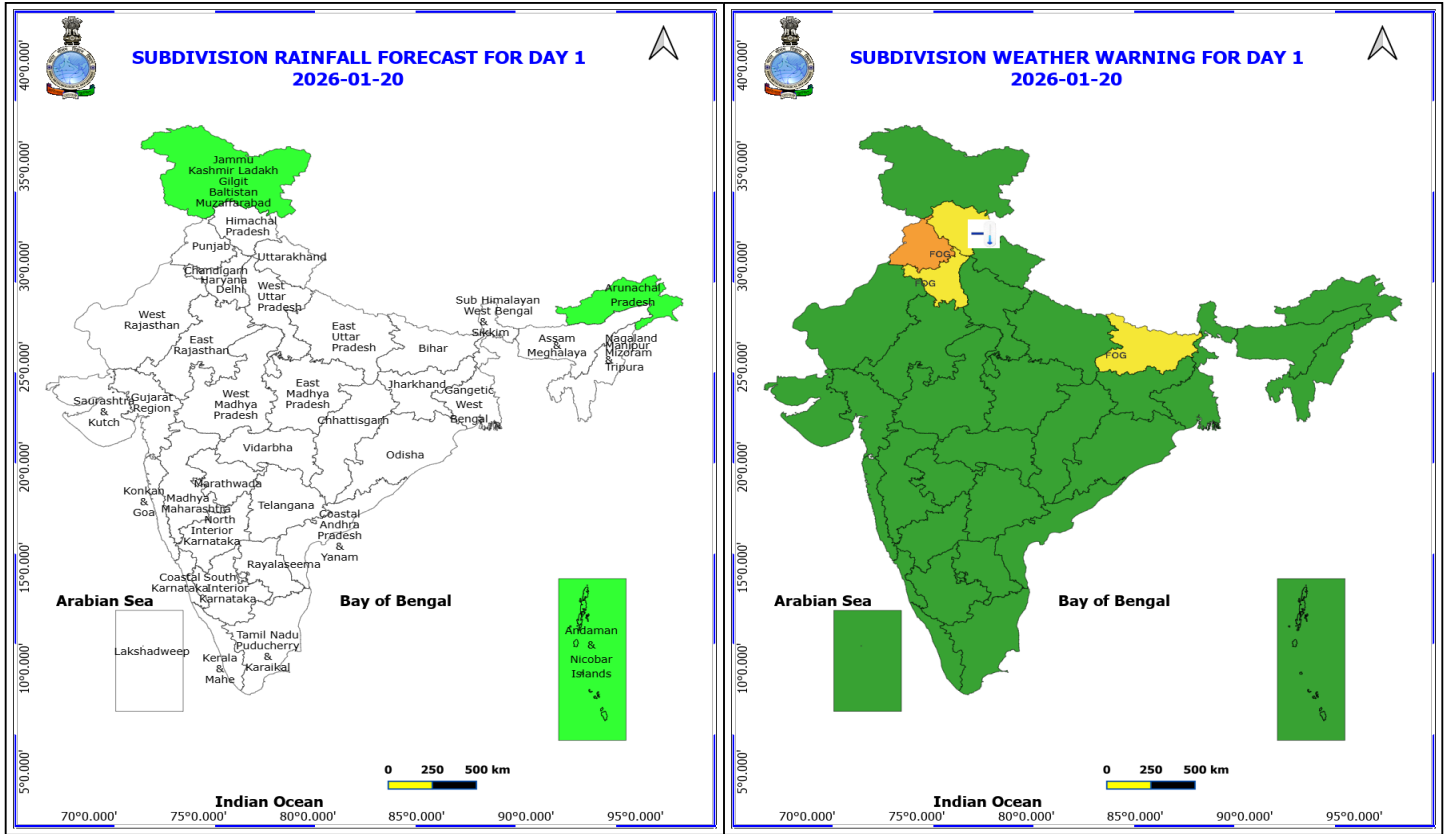
- ❖ **Rainfall distribution** (from 0830 hours IST of yesterday to 0530 hours IST of today): **at most places** over Andaman & Nicobar Islands; **at many places** over East Rajasthan; **Dry** over rest of the country.
- ❖ **Fog Condition Observed (at 0530 hours of today): Dense fog conditions:** at isolated places over Assam & Meghalaya **Moderate fog conditions:** at a few places over Punjab, at isolated places over Bihar, Haryana Chandigarh & Delhi and Saurashtra & Kutch **Shallow fog conditions:** at many places over Bihar, at a few places over East Uttar Pradesh, West Uttar Pradesh and Punjab, at isolated places over Haryana Chandigarh & Delhi, East Rajasthan and Coastal Andhra Pradesh & Yanam
- ❖ **Visibility reported (at 0530 hours of today):** Assam & Meghalaya: Barapani/shillong (dist East Khasi Hills) 50.0; Saurashtra & Kutch: Porbandar AP (dist Porbandar) 200.0; Punjab: Amritsar (rajasansi) AP (dist Amritsar) 200.0; Haryana Chandigarh & Delhi: New Delhi (safdarjung) (dist South West Delhi) 200.0; Bihar: Purnea (dist Purnia) 200.0;.
- ❖ **Minimum Temperature Departures (as on 19-01-2026): below normal(-1.6°C to -3.0°C)** at many places over North Interior Karnataka; at few places over Andaman & Nicobar Islands, Gangetic West Bengal, Odisha, Jharkhand, Konkan & Goa, Chhattisgarh and Coastal Karnataka; at isolated places over West Uttar Pradesh, Himachal Pradesh, East Madhya Pradesh, Saurashtra & Kutch, Marathwada, Coastal Andhra Pradesh & Yanam, Telangana, Rayalaseema, Tamil Nadu, Puducherry & Karaikal, South Interior Karnataka and Kerala & Mahe. **appreciably below normal(-5.0°C to -3.1°C)** at few places over Rayalaseema and Kerala & Mahe; at isolated places over Andaman & Nicobar Islands, Assam & Meghalaya, Odisha, Bihar, Coastal Andhra Pradesh & Yanam, Tamil Nadu, Puducherry & Karaikal and South Interior Karnataka. **markedly below normal(< -5.0°C)** at few places over West Madhya Pradesh, East Madhya Pradesh, Gujarat Region, Rayalaseema and Tamil Nadu, Puducherry & Karaikal; at isolated places over Assam & Meghalaya, Gangetic West Bengal, Odisha, Jharkhand, Bihar, East Uttar Pradesh, West Uttar Pradesh, Himachal Pradesh, West Rajasthan, East Rajasthan, Saurashtra & Kutch, Konkan & Goa, Chhattisgarh, Coastal Andhra Pradesh & Yanam, Telangana and South Interior Karnataka. **The lowest minimum temperature** of 2.9°C was reported at AMRITSAR (PUNJAB) over the Plains of India.
- ❖ **Maximum Temperature Departures (as on 19-01-2026):** The highest maximum temperature of 34.2°C was reported at NANDIGAMA (ANDHRA PRADESH).

Meteorological Analysis (Based on 0530 hours IST)

- The **Western Disturbance** as a cyclonic circulation over north Punjab and neighbourhood at 3.1 km above mean sea level with the trough aloft in middle and upper tropospheric westerlies with its axis at 5.8 km above mean sea level roughly along Long. 73°E to the north of Lat. 32°N persists.
- The **induced cyclonic circulation** over northeast Rajasthan & neighbourhood extending upto 1.5 km above mean sea level persists.
- The **Western Disturbance** as a trough in middle tropospheric westerlies with its axis at 5.8 km above mean sea level now runs roughly along Long. 65°E to the north of Lat. 32°N.
- Thereafter an intense **Western disturbance** in quick succession is likely to affect Northwest India from the night of 21st January, 2026.
- **Subtropical westerly Jet Stream** with core winds of the order of 130 knots at 12.6 km above mean sea level prevails over Northwest India.

Weather Outlook for subsequent 3 days

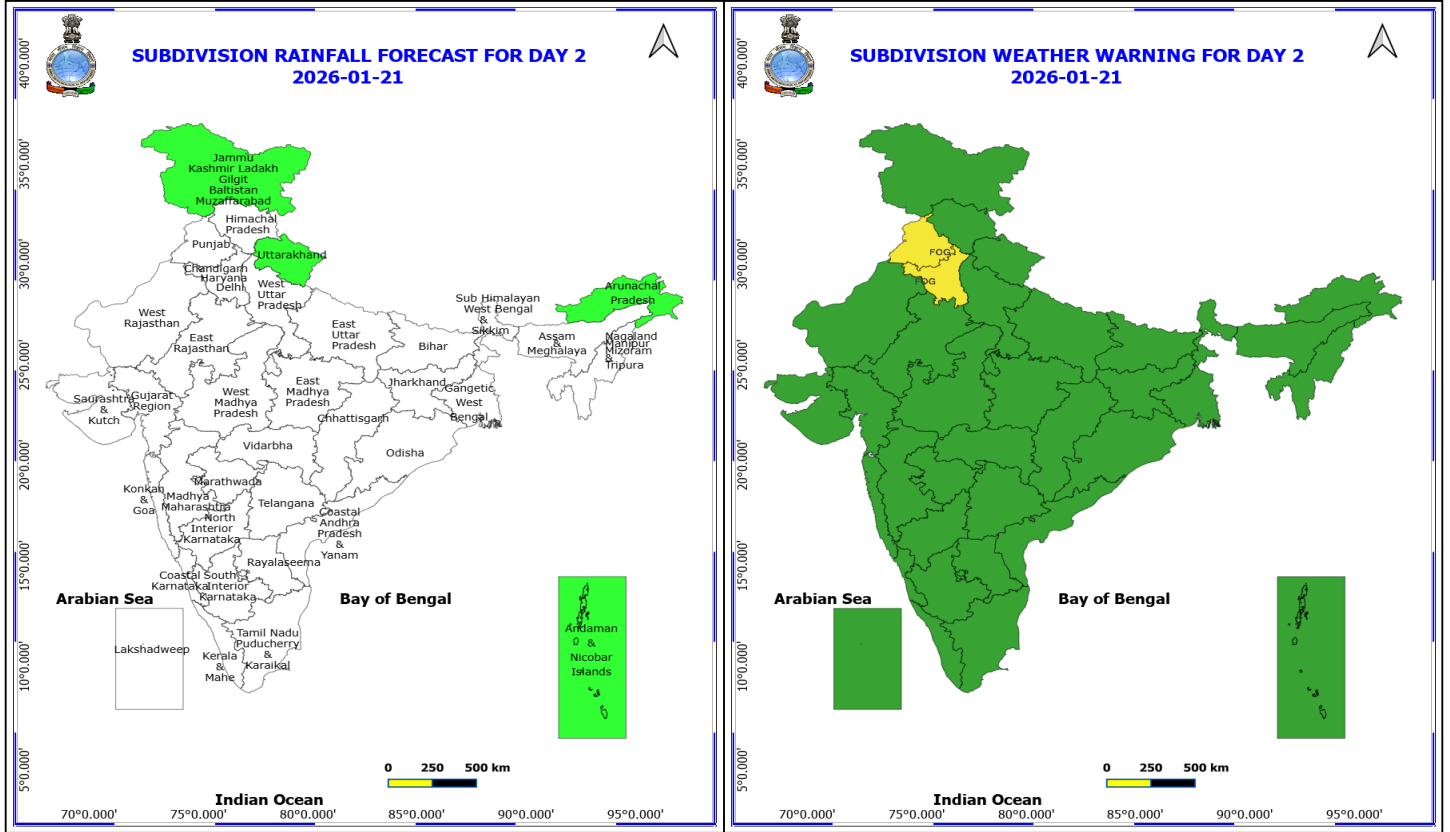
- Scattered to Fairly widespread activity likely over Western Himalayan Region, Punjab, Haryana, Delhi.
- Isolated/Scattered rainfall activity is likely over West Uttar Pradesh.
- Isolated rainfall activity is likely over Lakshadweep and Nicobar islands.



20 January (Day 1)

- ❖ **Cold wave conditions** very likely at isolated places over Himachal Pradesh.
- ❖ **Dense Fog** very likely at isolated places over Bihar and Haryana, Chandigarh & Delhi.
- ❖ **Dense to Very Dense Fog** very likely at isolated places over Punjab.

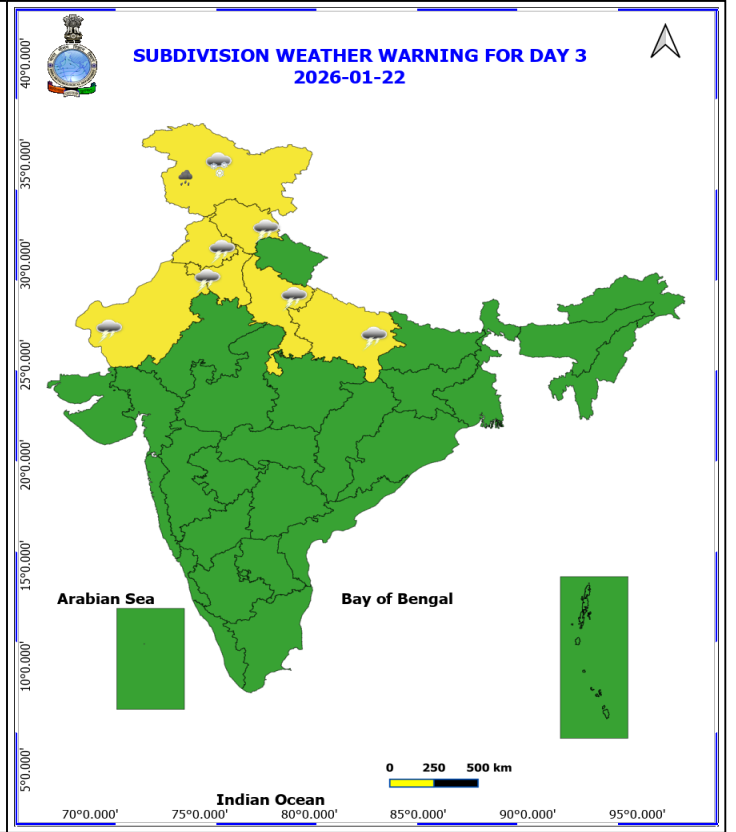
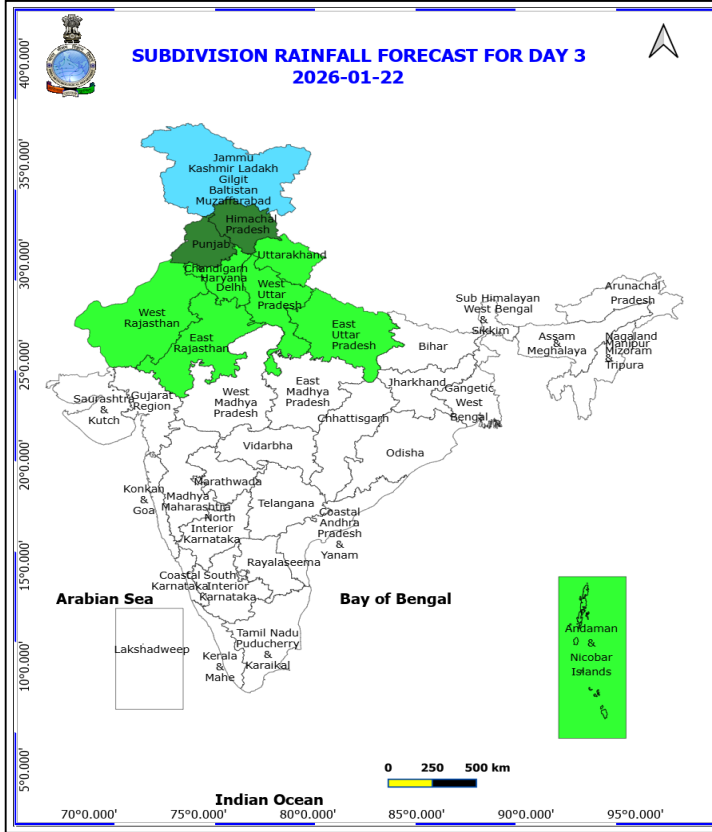
No Fishermen Warning



21 January (Day 2)

❖ **Dense Fog** very likely at isolated places over Haryana, Chandigarh & Delhi and Punjab.

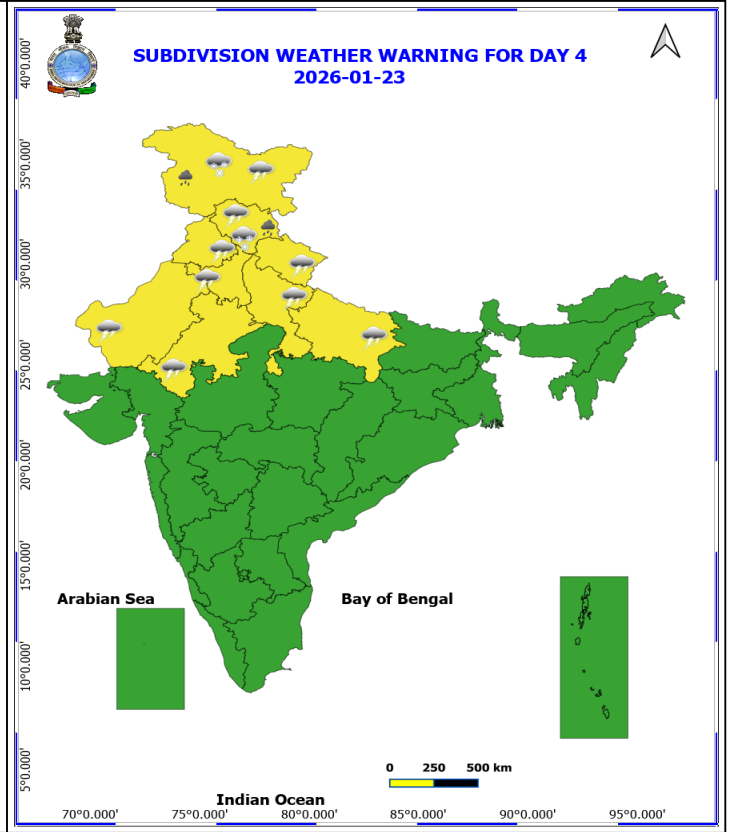
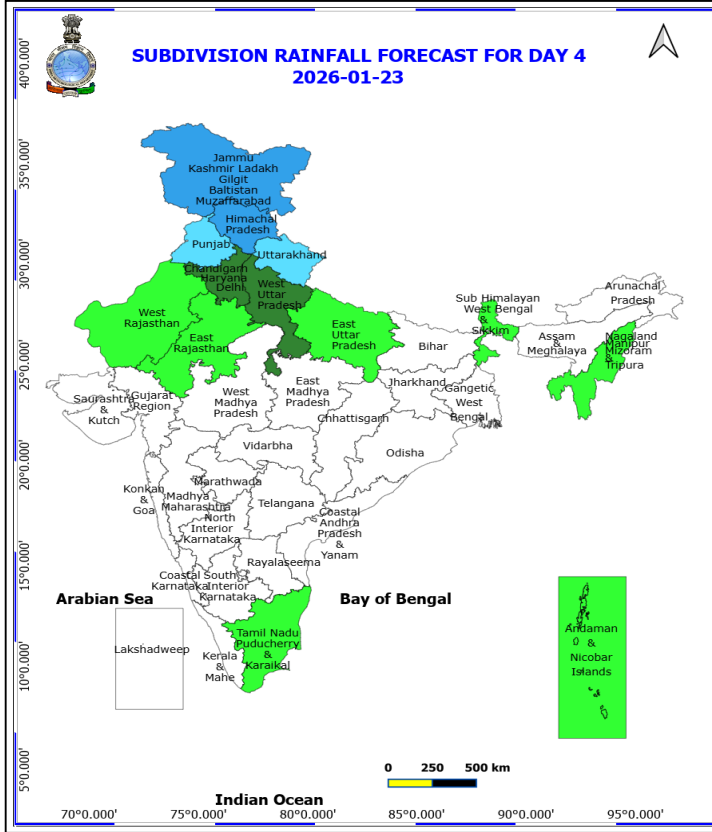
No Warning.



22 January (Day 3)

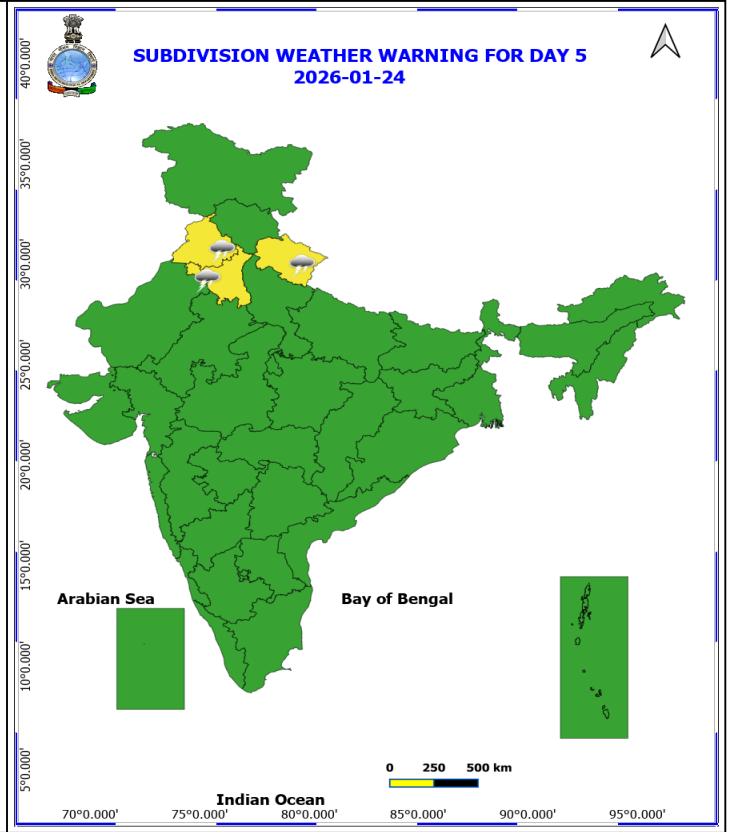
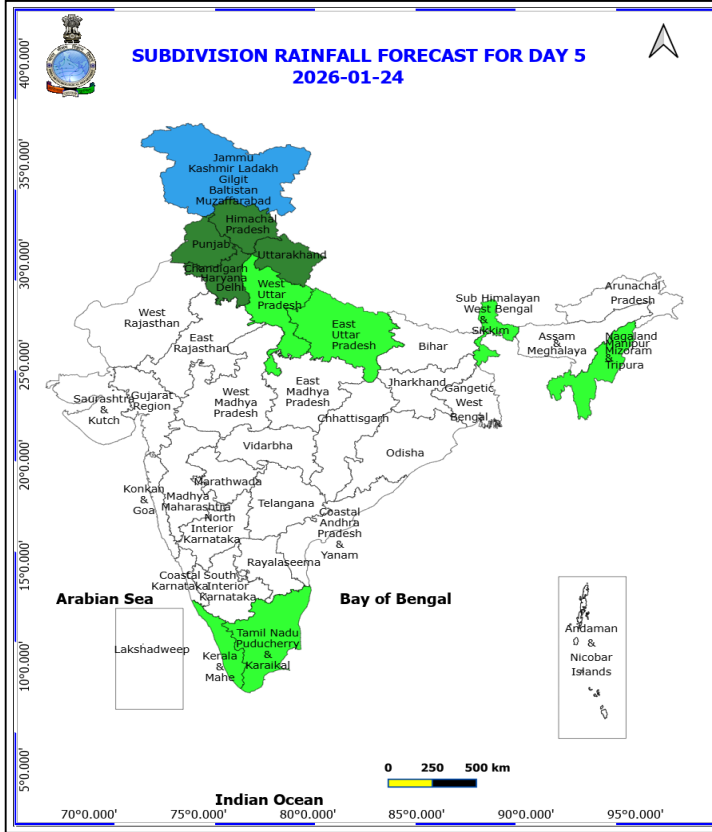
- ❖ **Heavy Rainfall** very likely at isolated places over Jammu-Kashmir-Ladakh-Gilgit-Baltistan-Muzaffargarh.
- ❖ **Heavy Snowfall** very likely at isolated places over Jammu-Kashmir-Ladakh-Gilgit-Baltistan-Muzaffargarh.
- ❖ **Thunderstorm accompanied with lightning & gusty winds(30-40kmph)** very likely at isolated places over Haryana, Chandigarh & Delhi, Punjab, Uttar Pradesh and West Rajasthan.
- ❖ **Thunderstorm accompanied with Lightning** very likely at isolated places over Himachal Pradesh.

No Warning.



23 January (Day 4)

- ❖ **Heavy Rainfall** likely at isolated places over Himachal Pradesh and Jammu-Kashmir-Ladakh-Gilgit-Baltistan-Muzaffarabad.
- ❖ **Heavy Snowfall** likely at isolated places over Himachal Pradesh and Jammu-Kashmir-Ladakh-Gilgit-Baltistan-Muzaffarabad.
- ❖ **Thunderstorm accompanied with lightning & gusty winds(40-50kmph)** likely at isolated places over Jammu-Kashmir-Ladakh-Gilgit-Baltistan-Muzaffarabad.
- ❖ **Thunderstorm accompanied with lightning & gusty winds(30-40kmph)** likely at isolated places over Haryana, Chandigarh & Delhi, Punjab, Rajasthan and Uttar Pradesh.
- ❖ **Thunderstorm accompanied with Lightning** likely at isolated places over Himachal Pradesh and Uttarakhand.
- ❖ Squally weather with wind speeds reaching 35 kmph to 45 kmph gusting to 55 kmph is likely to prevail over some parts of southwest Bay of Bengal.



24 January (Day 5)

❖ **Thunderstorm accompanied with Lightning** likely at isolated places over Haryana, Chandigarh & Delhi, Punjab and Uttarakhand.

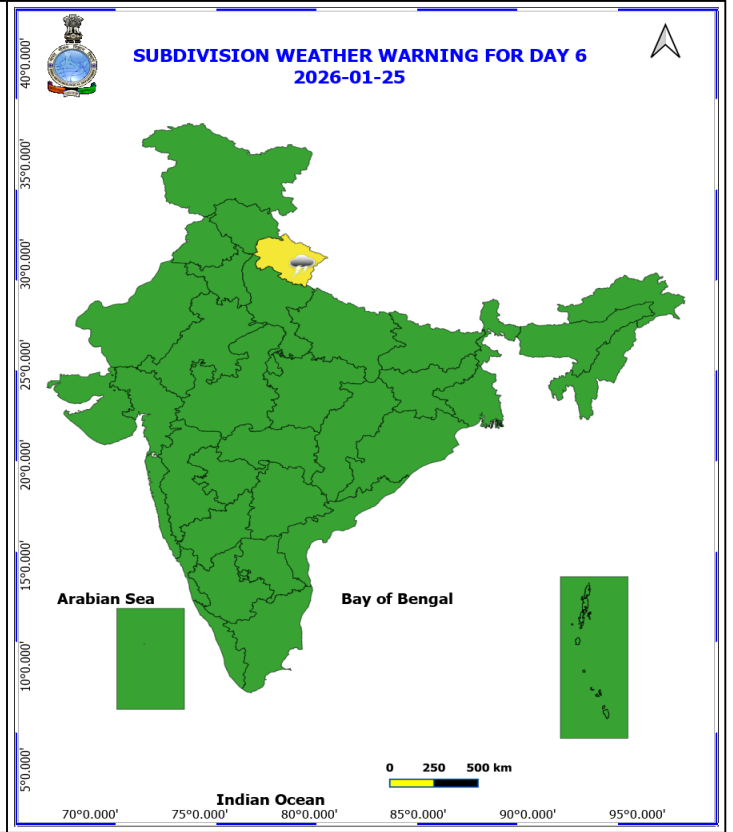
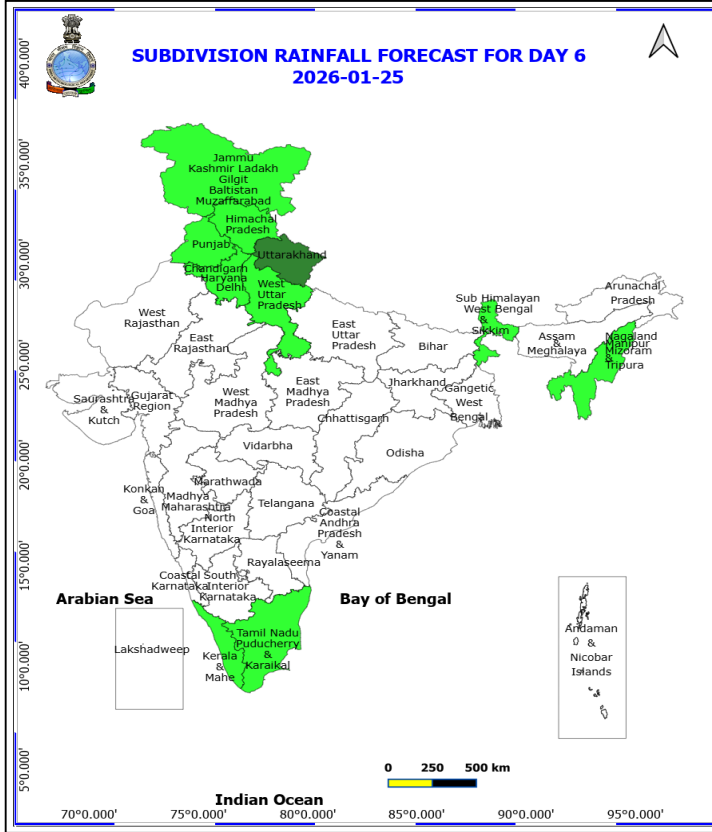
No Fishermen Warning

***Red color warning does not mean "Red Alert" Red color warning means "Take Action"**

Forecast and warning for any day is valid from 0830 hours IST of day till 0830 hours IST of next day

For more details kindly visit <https://mausam.imd.gov.in> or contact 011-2434-4599

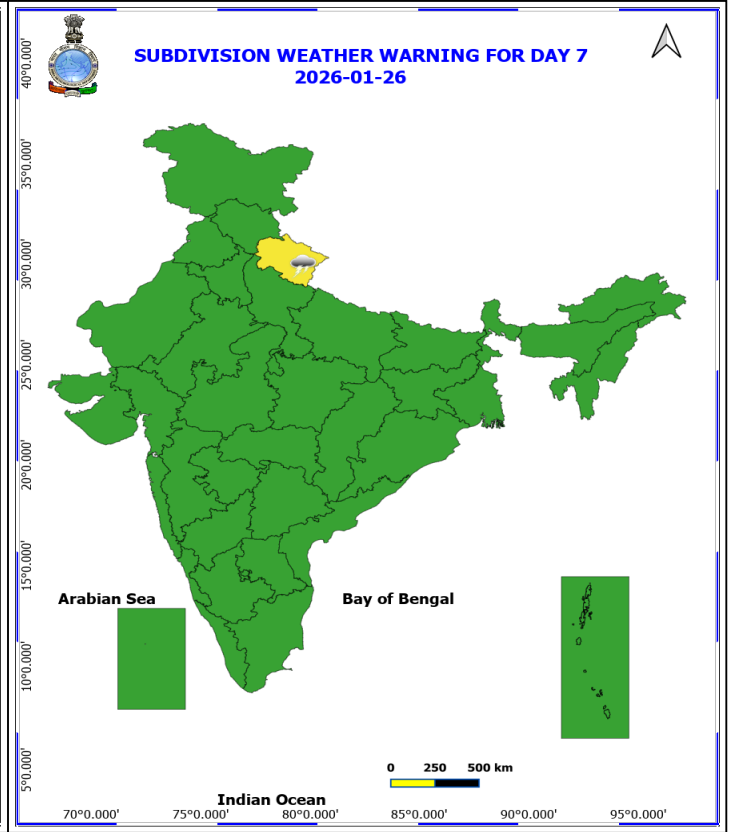
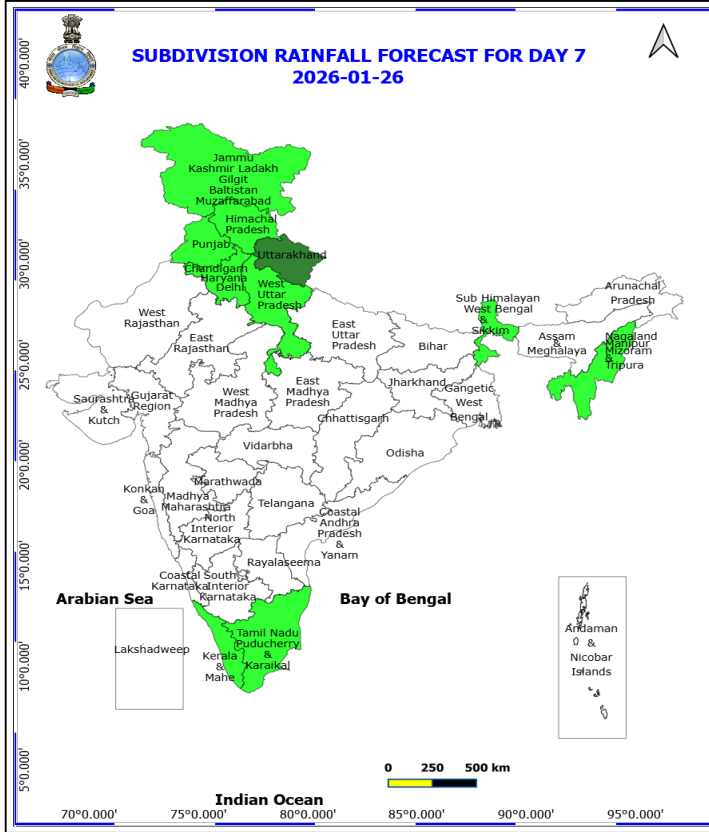
(Service to the nation since 1875)



25 January (Day 6)

❖ **Thunderstorm accompanied with Lightning** likely at isolated places over Uttarakhand.

No Fishermen Warning



26 January (Day 7)

❖ **Thunderstorm accompanied with Lightning** likely at isolated places over Uttarakhand.

No Fishermen Warning



Table-1

7 Days Rainfall Forecast

S.No.	Subdivision	20- Jan	21- Jan	22- Jan	23- Jan	24- Jan	25- Jan	26- Jan
		Day 1	Day 2	Day 3	Day 4	Day 5	Day 6	Day 7
1	ANDAMAN & NICOBAR ISLANDS	ISOL	ISOL	ISOL	ISOL	DRY	DRY	DRY
2	ARUNACHAL PRADESH	ISOL	ISOL	DRY	DRY	DRY	DRY	DRY
3	ASSAM & MEHGHALAYA	DRY	DRY	DRY	DRY	DRY	DRY	DRY
4	N. M. M. & T.	DRY	DRY	DRY	ISOL	ISOL	ISOL	ISOL
5	S.H. WEST BENGAL & SIKKIM	DRY	DRY	DRY	ISOL	ISOL	ISOL	ISOL
6	GANGETIC WEST BENGAL	DRY	DRY	DRY	DRY	DRY	DRY	DRY
7	ODISHA	DRY	DRY	DRY	DRY	DRY	DRY	DRY
8	JHARKHAND	DRY	DRY	DRY	DRY	DRY	DRY	DRY
9	BIHAR	DRY	DRY	DRY	DRY	DRY	DRY	DRY
10	EAST UTTAR PRADESH	DRY	DRY	ISOL	ISOL	ISOL	DRY	DRY
11	WEST UTTAR PRADESH	DRY	DRY	ISOL	SCT	ISOL	ISOL	ISOL
12	UTTARAKHAND	DRY	ISOL	ISOL	FWS	SCT	SCT	SCT
13	HARYANA, CHD & DELHI	DRY	DRY	ISOL	SCT	SCT	ISOL	ISOL
14	PUNJAB	DRY	DRY	SCT	FWS	SCT	ISOL	ISOL
15	HIMACHAL PRADESH	DRY	DRY	SCT	WS	SCT	ISOL	ISOL
16	JAMMU AND KASHMIR AND LADAKH	ISOL	ISOL	FWS	WS	WS	ISOL	ISOL
17	WEST RAJASTHAN	DRY	DRY	ISOL	ISOL	DRY	DRY	DRY
18	EAST RAJASTHAN	DRY	DRY	ISOL	ISOL	DRY	DRY	DRY
19	WEST MADHYA PRADESH	DRY	DRY	DRY	DRY	DRY	DRY	DRY
20	EAST MADHYA PRADESH	DRY	DRY	DRY	DRY	DRY	DRY	DRY
21	GUJRAT REGION	DRY	DRY	DRY	DRY	DRY	DRY	DRY
22	SAURASHTRA & KUTCH	DRY	DRY	DRY	DRY	DRY	DRY	DRY
23	KONKAN & GOA	DRY	DRY	DRY	DRY	DRY	DRY	DRY
24	MADHYA MAHARASHTRA	DRY	DRY	DRY	DRY	DRY	DRY	DRY
25	MARATHWADA	DRY	DRY	DRY	DRY	DRY	DRY	DRY
26	VIDARBHA	DRY	DRY	DRY	DRY	DRY	DRY	DRY
27	CHATTISGARH	DRY	DRY	DRY	DRY	DRY	DRY	DRY
28	COASTAL ANDHRA PRADESH	DRY	DRY	DRY	DRY	DRY	DRY	DRY
29	TELANGANA	DRY	DRY	DRY	DRY	DRY	DRY	DRY
30	RAYALASEEMA	DRY	DRY	DRY	DRY	DRY	DRY	DRY
31	TAMILNADU & PUDUCHERRY	DRY	DRY	DRY	ISOL	ISOL	ISOL	ISOL
32	COSTAL KARNATAKA	DRY	DRY	DRY	DRY	DRY	DRY	DRY
33	NORTH INTERIOR KARNATAKA	DRY	DRY	DRY	DRY	DRY	DRY	DRY
34	SOUTH INTERIOR KARNATAKA	DRY	DRY	DRY	DRY	DRY	DRY	DRY
35	KERALA	DRY	DRY	DRY	DRY	ISOL	ISOL	ISOL
36	LAKSHDWEEP	DRY	DRY	DRY	DRY	DRY	DRY	DRY

Legend	Category	%Stations
WS	Widespread/Most Places	76-100
FWS	Fairly Widespread/Many Places	51-75
SCT	Scattered/ A Few Places	26-50
ISOL	Isolated Places	1-25
DRY	No Rain	0

*Red color warning does not mean "Red Alert" Red color warning means "Take Action"
Forecast and warning for any day is valid from 0830 hours IST of day till 0830 hours IST of next day
For more details kindly visit <https://mausam.imd.gov.in> or contact 011-2434-4599

(Service to the nation since 1875)

Fig. 1: Maximum Temperatures Dated 2026-01-19

Fig. 2: Departure of Maximum Temp. Dated 2026-01-19

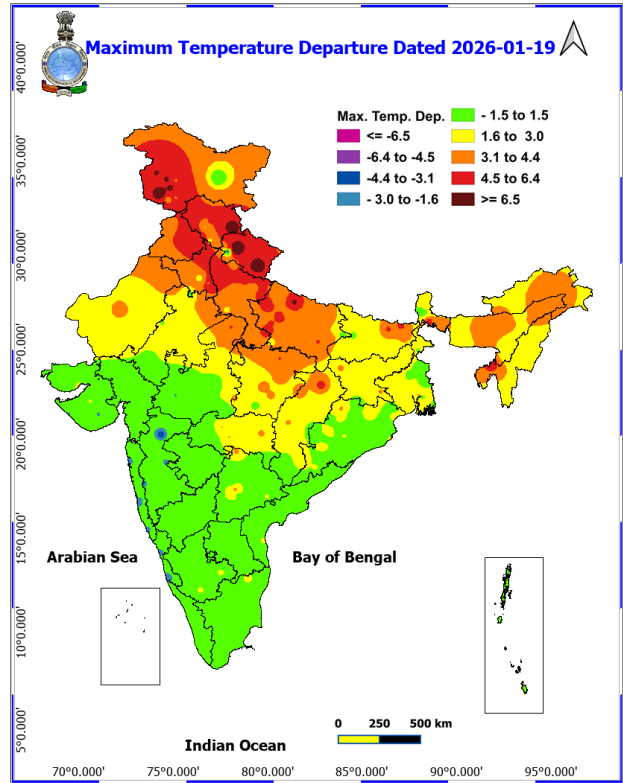
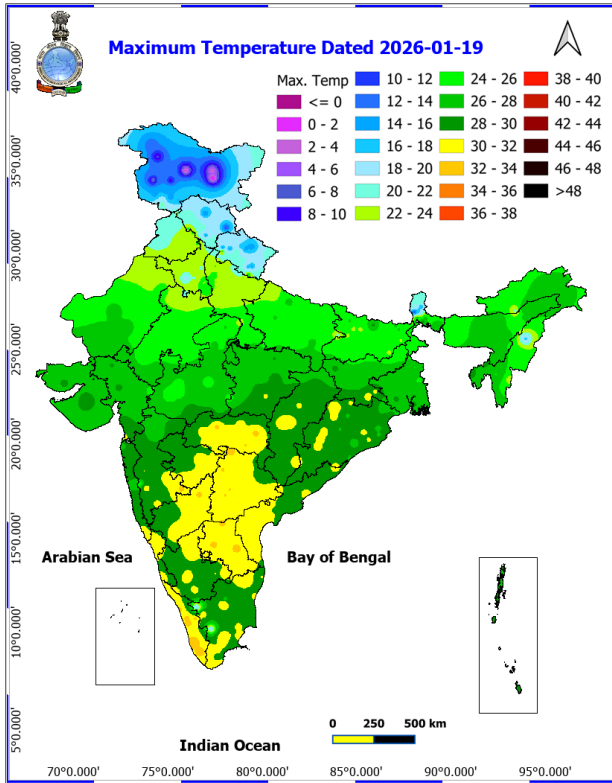
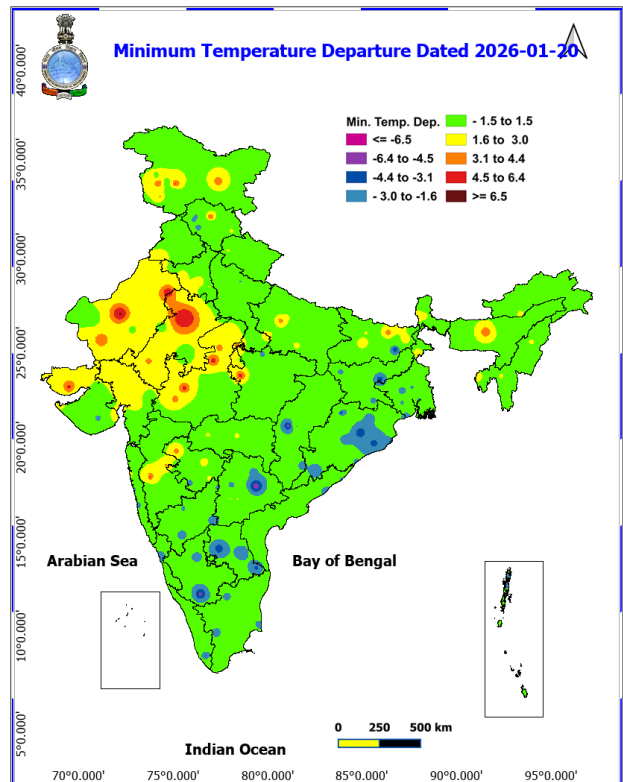
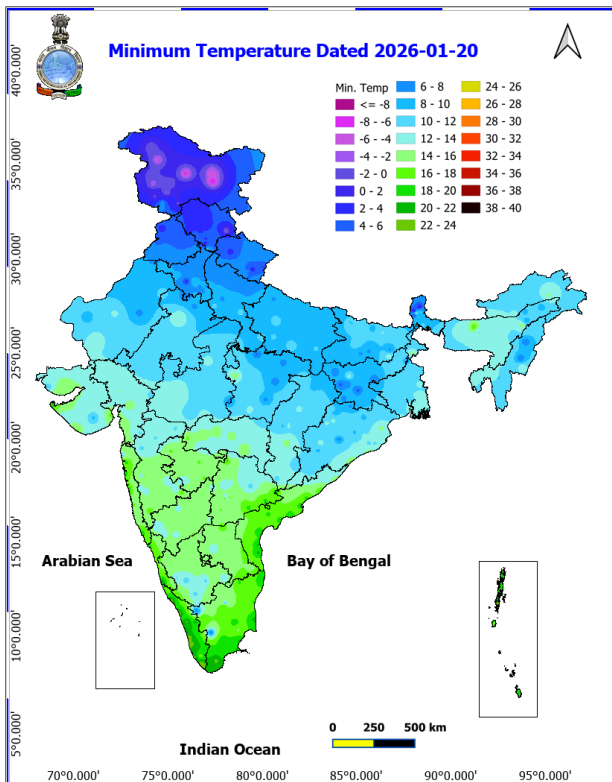


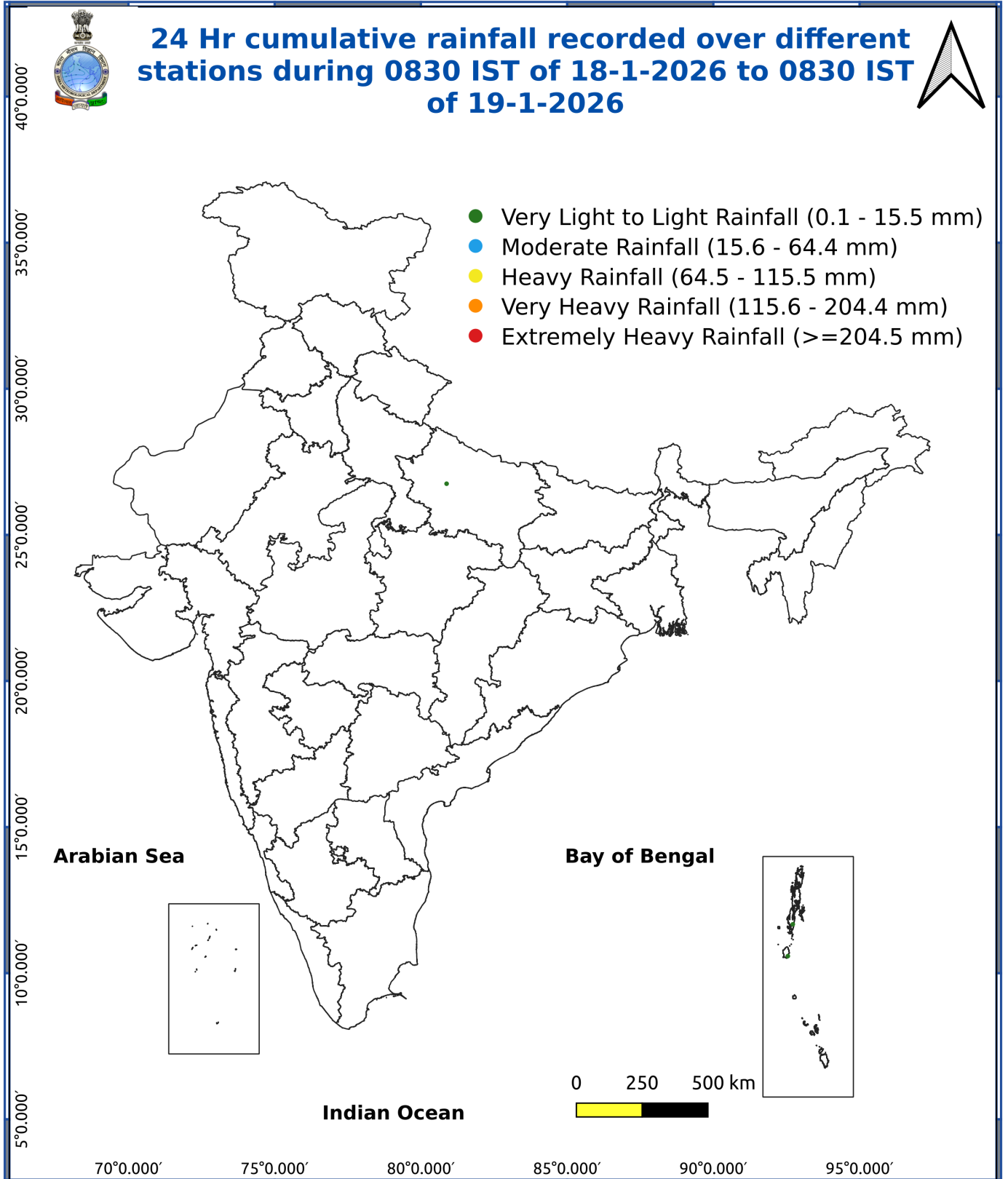
Fig. 3: Minimum Temperatures Dated 2026-01-19

Fig. 4: Departure of Minimum Temp. Dated 2026-01-19



***Red color warning does not mean "Red Alert" Red color warning means "Take Action"**
Forecast and warning for any day is valid from 0830 hours IST of day till 0830 hours IST of next day
For more details kindly visit <https://mausam.imd.gov.in> or contact 011-2434-4599

(Service to the nation since 1875)



Impact and Actions

Impact expected due to dense/very dense fog in the morning hours:

- Dense to very dense fog conditions very likely over Punjab, Haryana, Chandigarh, Uttar Pradesh and Bihar during next 2-3 days.

Transport and Aviation:

- May affect some airports, highways and railway routes in the areas of met- sub-division.
- Difficult driving conditions with slower journey times.
- Unless taken precautionary measures, it may lead to some road traffic collisions.

Power Sector:

- Chances of Tripping of Power lines in the very dense fog routes.

Human Health:

- Lung related health impacts: Dense fog contains particulate matter and other pollutants and in case exposed it gets lodged in the lungs, clogging them and decreasing their functional capacity which increases episodes of wheezing, coughing and shortness of breath.
- Impact on people having asthma bronchitis: Long time exposure to dense fog may cause respiratory problem for people having asthma bronchitis and other lung related health problems.
- Eye Irritation: Dense fog contains pollutions of various types and these Pollutants in the air if exposed may tend to irritate the membranes of the eye causing various infections leading to redness or swelling of the eye.

Action suggested:

❖ Transport and Aviation:

- Be careful while driving or outing through any transport.
- Use fog lights during driving.
- Be in touch with airlines, railways and state transport for schedule of your journey.

❖ Power Sector:

- To keep ready Maintenance Team.
- Human Health: To avoid outing until unless emergency and to cover the face.

Impact expected due to Cold Wave to Severe Cold wave conditions:

Cold wave conditions very likely in isolated pockets of Himachal Pradesh on 20th & 21st January.

- An increased likelihood of various illnesses like flu, running/ stuffy nose or nosebleed, which usually set in or get aggravated due to prolonged exposure to cold.
- Do not ignore shivering. It is the first sign that the body is losing heat. Get Indoors.
- Frostbite can occur due to prolonged exposure to cold. The skin turns pale, hard and numb and eventually black blisters appear on exposed body parts such as fingers, toes, nose and or earlobes. Severe frostbite needs immediate medical attention and treatment.
- Impact on agriculture, crop, livestock, water supply, transport and power sector at some places.

Action suggested:

***Red color warning does not mean "Red Alert" Red color warning means "Take Action"**

Forecast and warning for any day is valid from 0830 hours IST of day till 0830 hours IST of next day

For more details kindly visit <https://mausam.imd.gov.in> or contact 011-2434-4599

(Service to the nation since 1875)

- Wear several layers of loose fitting, light weight; warm woollen clothing.
- Cover your head, neck, hands and toes adequately as majority of heat loss occurs through these body parts. Wear several layers of loose fitting, light weight; warm woollen clothing rather than one layer of heavy cloth.
- Eat vitamin-C rich fruits & vegetable and drink sufficient fluids preferably warm fluids to maintain adequate immunity.
- Avoid or limit outdoor activities.
- Keep dry, if wet, change cloths immediately to prevent loss of body heat. Wear insulated/waterproof shoes.
- Warm the affected area of the body slowly with lukewarm water; do not rub the skin vigorously.
- If the affected skin area turns black, immediately consult a doctor.
- Maintain ventilation while using Heaters to avoid inhaling toxic fumes.
- Take safety measures while using electrical and gas heating devices.
- Extreme care needed for vulnerable people.
- Seek medical attention as soon as possible for someone suffering from frostbite/ Hypothermia.
- Protect livestock from cold weather.

Agromet advisories for various parts of the country

Agromet advisories for likely impact of Cold Waves/ Low Temperatures

- In **Himachal Pradesh**, apply light and frequent irrigation to the standing crops in the evening hours to protect crops from low temperature stress or cold injury. Use mulching and cover the vegetable nurseries and young fruit plants with straw / polythene sheets to maintain optimum soil temperature.

Livestock / Poultry

- Keep the cattle in the sheds during night and provide dry bedding to protect them from cold.
- Keep the chicks warm by providing artificial light in the poultry sheds.

Agromet advisories for likely impact of Thunderstorm / Gusty Winds

- Provide mechanical support to horticultural crops and staking or support to vegetables and young fruit plants / fruit-bearing plants to avoid lodging due to strong winds.

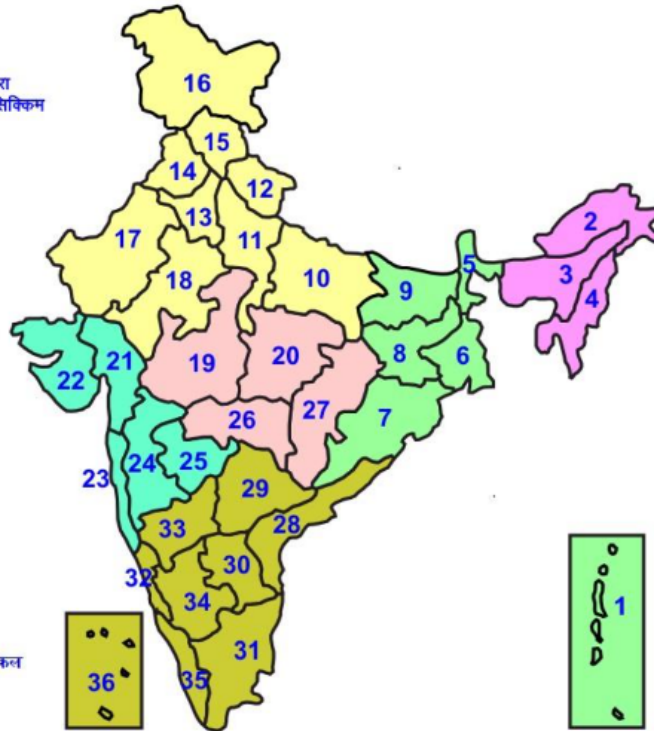
Legends & abbreviations:

Region wise classification of meteorological Sub-Divisions:

- **Northwest India:** Western Himalayan Region (Jammu-Kashmir-Ladakh-Gilgit-Baltistan-Muzaffarabad, Himachal Pradesh and Uttarakhand); Punjab, Haryana-Chandigarh-Delhi; West Uttar Pradesh, East Uttar Pradesh, West Rajasthan and East Rajasthan.
- **Central India:** West Madhya Pradesh, East Madhya Pradesh, Vidarbha and Chhattisgarh.
- **East India:** Bihar, Jharkhand, Sub-Himalayan West Bengal & Sikkim; Gangetic West Bengal, Odisha and Andaman & Nicobar Islands.
- **Northeast India:** Arunachal Pradesh, Assam & Meghalaya and Nagaland, Manipur, Mizoram & Tripura.
- **West India:** Gujarat Region, Saurashtra & Kutch, Konkan & Goa, Madhya Maharashtra and Marathawada.
- **South India:** Coastal Andhra Pradesh & Yanam, Telangana, Rayalaseema, Coastal Karnataka, North Interior Karnataka, South Interior Karnataka, Kerala & Mahe, Tamil Nadu, Puducherry & Karaikal and Lakshadweep.

LEGENDS

- 1 अंडमान और निकोबार द्वीप समुह
- 2 अरुणाचल प्रदेश
- 3 असम और मेघालय
- 4 नागालैंड मनीपुर मीजोरम और त्रिपुरा
- 5 उप हिमालय पश्चिम बंगाल एवं सिक्किम
- 6 पश्चिम बंगाल
- 7 ओडिसा
- 8 झारखंड
- 9 बिहार
- 10 पूर्वी उत्तर प्रदेश
- 11 पश्चिम उत्तर प्रदेश
- 12 उत्तराखंड
- 13 हरियाणा चंडीगढ़ एवं दिल्ली
- 14 पंजाब
- 15 हिमाचल प्रदेश
- 16 जम्मू एवं कश्मीर एवं लद्दाख
- 17 पश्चिम राजस्थान
- 18 पूर्वी राजस्थान
- 19 पश्चिम मध्य प्रदेश
- 20 पूर्वी मध्य प्रदेश
- 21 गुजरात क्षेत्र
- 22 सौराष्ट्र एवं कच्छ
- 23 कोंकण एवं गोवा
- 24 मध्य महाराष्ट्र
- 25 मराठावाडा
- 26 विदर्भ
- 27 छत्तीसगढ़
- 28 तटीय आंध्र प्रदेश एवं चनम
- 29 तेलंगाना
- 30 रायलसीमा
- 31 तमिलनाडु, पुदुचेरी एवं कराईकल
- 32 तटिय कर्नाटक
- 33 आंतरिक उत्तरी कर्नाटक
- 34 आंतरिक दक्षिणी कर्नाटक
- 35 केरल एवं माहे
- 36 लक्षद्वीप



1. Andaman & Nicobar Islands
2. Arunachal Pradesh
3. Assam & Meghalaya
4. Nagaland, Manipur, Mizoram & Tripura
5. Sub-Himalayan West Bengal & Sikkim
6. Gangetic West Bengal
7. Orissa
8. Jharkhand
9. Bihar
10. East Uttar Pradesh
11. West Uttar Pradesh
12. Uttarakhand
13. Haryana, Chd & Delhi
14. Punjab
15. Himachal Pradesh
16. Jammu & Kashmir and Ladakh
17. West Rajasthan
18. East Rajasthan
19. West Madhya Pradesh
20. East Madhya Pradesh
21. Gujarat
22. Saurashtra
23. Konkan & Goa
24. Madhya Maharashtra
25. Marathawada
26. Vidharbha
27. Chhattisgarh
28. Coastal Andhra Pradesh & Yanam
29. Telangana
30. Rayalaseema
31. Tamilnadu, Puducherry & Karaikal
32. Coastal Karnataka
33. North Interior Karnataka
34. South Interior Karnataka
35. Kerala & Mahe
36. Lakshadweep

SPATIAL DISTRIBUTION (% of Stations reporting)

% Stations	Category	% Stations	Category
76-100	Widespread (WS/ Most Places)	26-50	Scattered (SCT/ A Few Places)
51-75	Fairly Widespread (FWS/ Many Places)	1-25	Isolated (ISOL)

Subdivision Colour

- NO WARNING
- WATCH (BE UPDATED)
- ALERT (BE PREPARED TO TAKE ACTION)
- WARNING (TAKE ACTION)

Probabilistic Forecast

Terms	Probability of Occurrence (%)
Unlikely	< 25
Likely	25 - 50
Very Likely	50 - 75
Most Likely	> 75

- | | | | |
|--------------------------|-----------------|----------------------|--------------------|
| Heavy Rain | Very Heavy Rain | Extremely Heavy Rain | Heavy Snow |
| Thunderstorm & Lightning | Hailstorm | Dust Storm | Dust Raising Winds |
| Strong surface winds | Heat Wave | Hot Day | Warm Night |
| Cold Wave | Cold Day | Ground Frost | Fog |
| Hot & Humid | | | |

*Red color warning does not mean "Red Alert" Red color warning means "Take Action"

Forecast and warning for any day is valid from 0830 hours IST of day till 0830 hours IST of next day

For more details kindly visit <https://mausam.imd.gov.in> or contact 011-2434-4599

(Service to the nation since 1875)

LEGENDS

WARNING

WARNING (TAKE ACTION)
ALERT (BE PREPARED)
WATCH (BE UPDATED)
NO WARNING (NO ACTION)

Probabilistic Forecast

Terms	Probability of Occurrence (%)
Unlikely	< 25
Likely	25 - 50
Very Likely	50 - 75
Most Likely	> 75



Heavy: 64.5 to 115.5 mm/cm *
Very Heavy: 115.6 to 204.4 mm/cm*
Extremely Heavy: > 204.4 mm/cm *



When maximum temperature of a station reaches $\geq 40^{\circ}\text{C}$ for plains and $\geq 30^{\circ}\text{C}$ for hilly regions
(a) Based on Departure from normal

Heat Wave: Maximum Temperature Departure from normal 4.5°C to 6.4°C .
Severe Heat Wave: Maximum Temperature Departure from normal $\geq 6.5^{\circ}\text{C}$

(b). Based on Actual maximum temperature

Heat Wave: When actual maximum temperature $\geq 45^{\circ}\text{C}$.
Severe Heat Wave: When actual maximum temperature $\geq 47^{\circ}\text{C}$

(c). Criteria for heat wave for coastal stations

When maximum temperature departure is $> 4.5^{\circ}\text{C}$ from normal. Heat Wave may be described provided maximum temperature $\geq 37^{\circ}\text{C}$



When maximum temperature remains 40°C

Warm Night: When minimum temperature departure 4.5°C to 6.4°C .
Severe Warm Night: When minimum temperature departure $> 6.4^{\circ}\text{C}$.



When minimum temperature of a station $\leq 10^{\circ}\text{C}$ for plains and $\leq 0^{\circ}\text{C}$ for hilly regions.

(a). Based on departure

Cold Wave: Minimum Temperature Departure from normal -4.5°C to -6.4°C .
Severe Cold Wave: Minimum Temperature Departure from normal $\leq -6.5^{\circ}\text{C}$

(b) Based on actual Minimum Temperature (for Plains only)

Cold Wave : When Minimum Temperature is $\leq 4.0^{\circ}\text{C}$
Severe Cold Wave: When Minimum Temperature is $\leq 2.0^{\circ}\text{C}$

(c) For Coastal Stations

When Minimum Temperature departure is $\leq -4.5^{\circ}\text{C}$ & actual Minimum Temperature is $\leq 15^{\circ}\text{C}$



When minimum temperature of a station $\leq 10^{\circ}\text{C}$ for plains and $\leq 0^{\circ}\text{C}$ for hilly regions
Based on departure

Cold Day: Maximum Temperature Departure from normal -4.5°C to -6.4°C .
Severe Cold Day: Maximum Temperature Departure from normal $\leq -6.5^{\circ}\text{C}$



Phenomenon of small droplets suspended in air and the horizontal visibility $< 1\text{km}$

Moderate Fog: When the visibility between 500-200 metres
Dense Fog: when the visibility between 50- 200 metres
Very Dense Fog: when the visibility < 50 metres



Sudden electrical discharges manifested by a flash of light (Lightning) and a sharp rumbling sound (thunder)



An ensemble of particles of dust or sand energetically lifted to great heights by a strong and turbulent wind.



Ice deposits on ground

Air temperature $\leq 4^{\circ}\text{C}$ (over Plains)



A strong wind that rises suddenly, lasts for atleast 1 minute.

Moderate: Wind speed 52-61 kmph
Severe: Wind speed 62-87 kmph
Very Severe: Wind speed > 87 kmph



Effect of various waves in the sea over specific area

Rough to very rough: Wind speed 41-62 kmph (22-33 knots) & Wave height 2.5-6 metre
High to very high: Wind speed 63-117 kmph (34-63 knots) & Wave height 6-14 metre
Phenomenal: Wind speed > 117 kmph (> 63 knots) & Wave height > 14 metre



Cyclonic Storm: Wind speed 62-87 kmph (34-47 knots)
Severe Cyclonic Storm: Wind speed 88-117 kmph (48-63 knots)
Very Severe Cyclonic Storm: Wind speed 118-165 kmph (64 - 89 knots)
Extremely Severe Cyclonic Storm: Wind speed 166-220 kmph (90 -119 knots)
Super Cyclone Storm: Wind speed > 220 kmph (> 119 knots)

*Red color warning does not mean "Red Alert" Red color warning means "Take Action"

Forecast and warning for any day is valid from 0830 hours IST of day till 0830 hours IST of next day

For more details kindly visit <https://mausam.imd.gov.in> or contact 011-2434-4599

(Service to the nation since 1875)