

2025-08-05

Time of Issue: 08:15:00 hours IST  
(Morning)

## ALL INDIA WEATHER SUMMARY AND FORECAST BULLETIN

### Significant Weather Features

#### Northwest India:

Isolated **heavy rainfall** likely over Uttarakhand during 05<sup>th</sup>-10<sup>th</sup>; Himachal Pradesh during 05<sup>th</sup>-08<sup>th</sup>; Jammu-Kashmir, Punjab on 05<sup>th</sup>; Haryana, West Uttar Pradesh on 05<sup>th</sup> & 06<sup>th</sup>; East Uttar Pradesh on 05<sup>th</sup> August with **very heavy rainfall** over Himachal Pradesh, Uttarakhand, Haryana, Uttar Pradesh on 05<sup>th</sup> August. Light/moderate rainfall at many places accompanied with thunderstorm & lightning likely over Western Himalayan region and many/some places over the plains during next 7 days.

#### East & Central India:

Isolated **heavy rainfall** likely over Sub-Himalayan West Bengal & Sikkim, Bihar during 05<sup>th</sup>-9<sup>th</sup>; Odisha on 06<sup>th</sup> & 07<sup>th</sup>; Gangetic West Bengal on 06<sup>th</sup> & 07<sup>th</sup>, Jharkhand on 07<sup>th</sup> & 08<sup>th</sup>; northwest Madhya Pradesh on 05<sup>th</sup>, Chhattisgarh during 08<sup>th</sup>-10<sup>th</sup> August **with isolated very heavy rainfall over Bihar on 05<sup>th</sup>; Sub-Himalayan West Bengal & Sikkim on 07<sup>th</sup> August.** Light to moderate rainfall at most/many places accompanied with thunderstorm & lightning likely over the region during next 5 days.

#### Northeast India:

Light/moderate rainfall at many places accompanied with thunderstorm, lightning and isolated **heavy rainfall** likely to continue over Arunachal Pradesh, Assam & Meghalaya during 05<sup>th</sup>-10<sup>th</sup>; Nagaland, Manipur, Mizoram & Tripura during 05<sup>th</sup>-08<sup>th</sup> August with isolated **very heavy rainfall over Arunachal Pradesh during 07<sup>th</sup>-10<sup>th</sup> August; Assam & Meghalaya on 07<sup>th</sup> & 08<sup>th</sup> August.**

#### South Peninsular India:

**Extremely heavy rainfall very likely at isolated places over Kerala and Ghat areas of Tamil Nadu on 05<sup>th</sup> & 06<sup>th</sup> August.** Isolated **heavy rainfall** likely over Tamil Nadu, Kerala & Mahe, Coastal & South Interior Karnataka during 05<sup>th</sup>-08<sup>th</sup>; Lakshadweep on 05<sup>th</sup> & 06<sup>th</sup>; North Interior Karnataka during 06<sup>th</sup>-08<sup>th</sup>; Coastal Andhra Pradesh & Yanam during 05<sup>th</sup>-07<sup>th</sup>; Rayalaseema during 05<sup>th</sup>-10<sup>th</sup> August with **very heavy rainfall** over Tamil Nadu, Kerala on 07<sup>th</sup>; Coastal & South Interior Karnataka on 05<sup>th</sup> & 06<sup>th</sup>; Rayalaseema on 05<sup>th</sup> August. Strong surface winds (speed reaching 40-50 kmph) very likely over South Peninsular India during next 3 days. Light to moderate rainfall at some/many places accompanied with thunderstorm & lightning likely over Tamil Nadu, Kerala & Mahe, Lakshadweep, Karnataka, Rayalaseema, Coastal Andhra Pradesh & Yanam and Telangana during next 5 days.

#### West India:

Isolated **heavy rainfall** likely over Marathwada on 06<sup>th</sup> & 07<sup>th</sup>; Konkan & Goa on 07<sup>th</sup> & 08<sup>th</sup> and Madhya Maharashtra on 08<sup>th</sup> August. Light to moderate rainfall at many/some places very likely over the region during next 5-6 days.

**\*Red color warning does not mean "Red Alert" Red color warning means "Take Action"**

Forecast and warning for any day is valid from 0830 hours IST of day till 0830 hours IST of next day

For more details kindly visit <https://mausam.imd.gov.in> or contact 011-2434-4599

(Service to the nation since 1875)

### Main Weather Observations:

- ❖ **Rainfall distribution** (from 0830 hours IST to 1730 hours IST of yesterday): **at most places** over West Uttar Pradesh, Uttarakhand, Bihar, East Uttar Pradesh, Arunachal Pradesh, Nagaland, Manipur, Mizoram & Tripura and Lakshadweep; **at many places** over Odisha, Konkan & Goa, Madhya Maharashtra, Sub-Himalayan West Bengal & Sikkim, Himachal Pradesh, Assam & Meghalaya, Tamilnadu Puducherry & Karaikal, West Madhya Pradesh, Gujarat Region, Gangetic West Bengal, Jharkhand, Punjab, Jammu & Kashmir and Ladakh, East Rajasthan, East Madhya Pradesh, Saurashtra & Kutch, Telangana, Andaman & Nicobar Islands, Vidarbha, Haryana Chandigarh & Delhi, Coastal Karnataka, South Interior Karnataka and Chhattisgarh; **Dry** over rest of the country.
- ❖ **Significant rainfall recorded(in cm)** (from 0830 hours IST to 1730 hours IST of yesterday): West Uttar Pradesh: Najibabad (dist Bijnor) 13, Bareilly (dist Bareilly) 4; Assam & Meghalaya: Silchar (dist Cachar) 7; **Uttarakhand**: Dehra Dun-mokampur (dist Dehradun) 6; East Uttar Pradesh: Fursatganj (dist Amethi), Kanpur Airforce (dist Kanpur Nagar) 5 Each, Ballia-obs2 (dist Ballia) 3; **Bihar**: Gaya (dist Gaya), Dehri (dist Rohtas) 3 Each; **Telangana**: Hyderabad (dist Hyderabad) 3; Haryana Chandigarh & Delhi: Ambala (dist Ambala) 3; **Lakshadweep**: Amini Divi (dist Lakshadweep) 3; Nagaland, Manipur, Mizoram & Tripura: Agartala AP (dist West Tripura) 3; **Odisha**: Baripada-obs (dist Mayurbhanj) 3.
- ❖ **Heavy Rainfall observed** (from 0830 hours IST to 1730 hours IST of yesterday): **Heavy to very heavy rain** at isolated places over West Uttar Pradesh **Heavy rain** at isolated places over Assam & Meghalaya.
- ❖ **Minimum Temperature Departures (as on 04-08-2025): markedly above normal(> 5.1°C)** at isolated places over Assam & Meghalaya, Odisha, East Uttar Pradesh, West Uttar Pradesh, Himachal Pradesh, West Rajasthan, East Rajasthan and West Madhya Pradesh. **appreciably above normal(3.1°C to 5.0°C)** at few places over East Madhya Pradesh; at isolated places over Sub Himalayan West Bengal & Sikkim, Bihar, Jammu-Kashmir Ladakh-Gilgit-Baltistan-Muzaffarabad, Gujarat Region, Saurashtra & Kutch and Chhattisgarh. **above normal(1.6°C to 3.0°C)** at many places over Marathwada; at few places over Uttarakhand, Vidarbha, Coastal Andhra Pradesh & Yanam and Telangana; at isolated places over Gangetic West Bengal, Haryana-Chandigarh-Delhi, Punjab, Madhya Maharashtra, Rayalaseema, Tamil Nadu, Puducherry & Karaikal and North Interior Karnataka. **near normal(-1.5°C to 1.5°C)** at many places over Jharkhand and Kerala & Mahe; at most places over Andaman & Nicobar Islands, Arunachal Pradesh, Nagaland, Manipur, Mizoram & Tripura, Konkan & Goa, Coastal Karnataka, South Interior Karnataka and Lakshadweep. **The lowest minimum temperature** of 20.2°C was reported at Khargone (West Madhya Pradesh) over the Plains of India.
- ❖ **Maximum Temperature Departures (as on 04-08-2025): markedly above normal(> 5.1°C)** at isolated places over Odisha, West Madhya Pradesh, Chhattisgarh, Coastal Andhra Pradesh & Yanam and Telangana. **appreciably above normal(3.1°C to 5.0°C)** at many places over North Interior Karnataka; at most places over Vidarbha; at few places over Madhya Maharashtra; at isolated places over Assam & Meghalaya, Jammu-Kashmir Ladakh-Gilgit-Baltistan-Muzaffarabad, East Madhya Pradesh, Konkan & Goa and Marathwada. **above normal(1.6°C to 3.0°C)** at few places over Gujarat Region, Rayalaseema and Kerala & Mahe; at isolated places over Andaman & Nicobar Islands, Nagaland, Manipur, Mizoram & Tripura, Gangetic West Bengal, Punjab, Himachal Pradesh, West Rajasthan, Saurashtra & Kutch, Tamil Nadu, Puducherry & Karaikal and South Interior Karnataka. **near normal(-1.5°C to 1.5°C)** at many places over Sub Himalayan West Bengal & Sikkim, Jharkhand and Lakshadweep; at most places over Haryana-Chandigarh-Delhi, East Rajasthan and Coastal Karnataka; at isolated places over Bihar and Uttarakhand. **The highest maximum temperature** of 38.2°C was reported at NELLORE (ANDHRA PRADESH).

\*Red color warning does not mean "Red Alert" Red color warning means "Take Action"

Forecast and warning for any day is valid from 0830 hours IST of day till 0830 hours IST of next day

For more details kindly visit <https://mausam.imd.gov.in> or contact 011-2434-4599

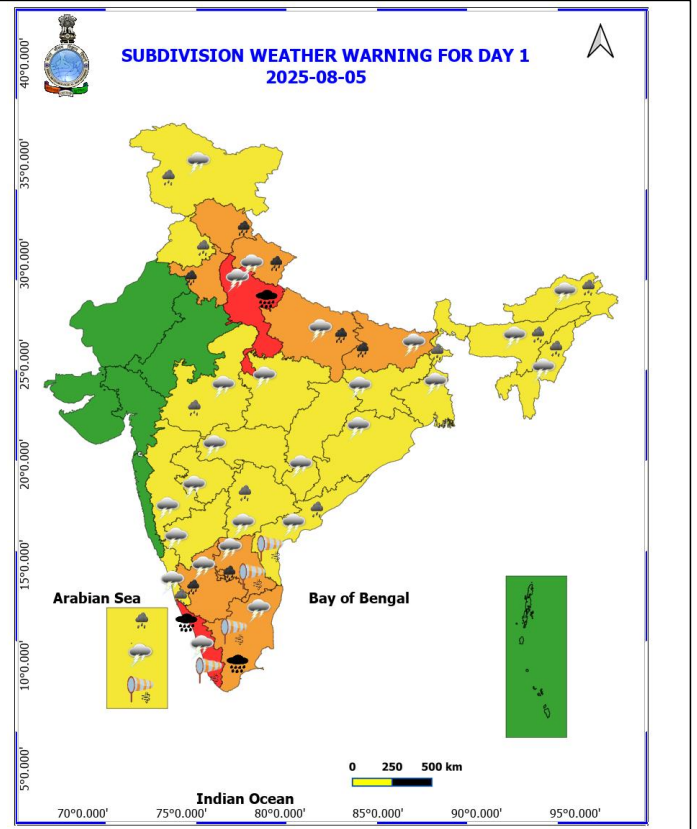
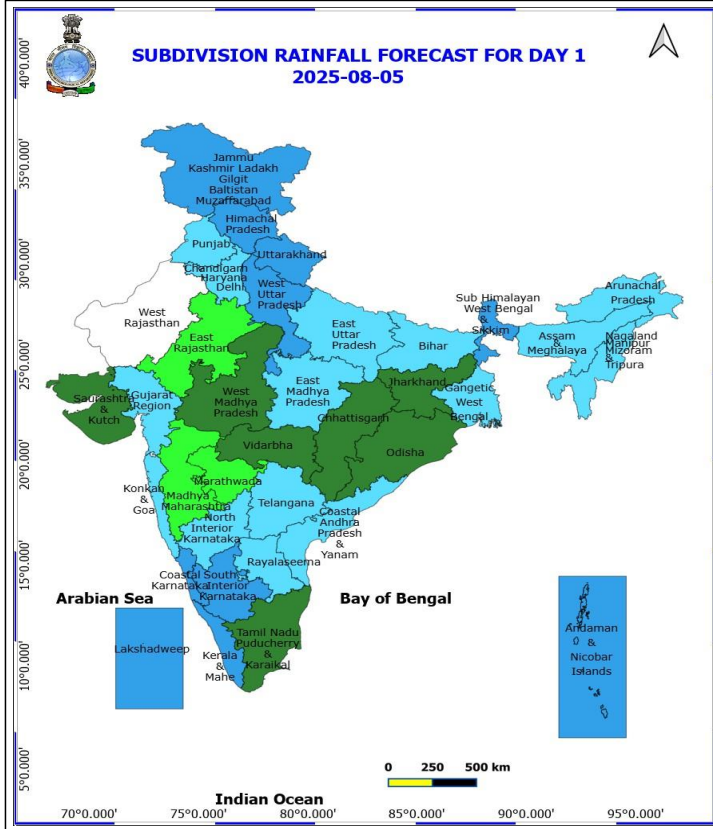
(Service to the nation since 1875)

### Meteorological Analysis (Based on 0530 hours IST)

- ❖ The **monsoon trough** at mean sea level now passes through Amritsar, Dehradun, Shahjahanpur, Gorakhpur, Darbhanga, Cooch Behar and thence east-northeastwards to the Arunachal Pradesh.
- ❖ An **upper air cyclonic circulation** lies over north Bangladesh & neighbourhood between 4.5 & 7.6 km above mean sea level
- ❖ The east-west **trough** roughly along Lat. 12°N from southern parts of eastcentral Arabian Sea to northern parts of south Bay of Bengal across South Interior Karnataka & north interior Tamil Nadu and the cyclonic circulation over southwest Bay off North Tamil Nadu coast between 3.1 & 7.6 km above mean sea level tilting southward with height persists.
- ❖ The **upper air cyclonic circulation** over southwest Bay off North Tamil Nadu coast persists and now seen between 1.5 & 7.6 km above mean sea level tilting southward with height.
- ❖ The **upper air cyclonic circulation** over central parts of south Rajasthan at 3.1 km above mean sea level persists.
- ❖ The **upper air cyclonic circulation** over northeast Assam at 3.1 km above mean sea level persists.
- ❖ The **Western Disturbance** as a trough in middle tropospheric level with its axis at 5.8 km above mean sea level runs roughly along Long. 72°E to north of 30°N.
- ❖ An **upper air cyclonic circulation** lies over Rayalaseema & neighbourhood at 0.9 km above mean sea level.
- ❖ An **upper air cyclonic circulation** likely to form over south Bangladesh & neighbourhood around 08<sup>th</sup> August, 2025.
- ❖ The **upper air cyclonic circulation** over Saurashtra at 4.5 km above mean sea level has become less marked.
- ❖ The **upper air cyclonic circulation** over Himachal Pradesh & neighbourhood at 1.5 km above mean sea level has become less marked.
- ❖ The **Western Disturbance** as a cyclonic circulation over Himachal Pradesh & adjoining Jammu Division at 5.8 km above mean sea level has moved away.
- ❖ The **trough** from northwest Uttar Pradesh to northeast Bihar across east Uttar Pradesh at 0.9 km above mean sea level has become less marked.

### Weather Outlook for subsequent 3 days

- ◆ Fairly widespread to widespread rainfall likely over the most parts of the country except Madhya Maharashtra and Marathwada where Isolated rainfall is likely.



**5 August (Day 1)**

- ❖ **Heavy to Very Heavy Rainfall with isolated Extremely Heavy Rainfall** very likely at isolated places over West Uttar Pradesh, Kerala & Mahe and Tamil Nadu Puducherry & Karaikal.
- ❖ **Heavy to Very Heavy Rainfall** very likely at isolated places over Bihar, Haryana, Chandigarh & Delhi, Himachal Pradesh, Rayalaseema, South Interior Karnataka, East Uttar Pradesh and Uttarakhand.
- ❖ **Heavy Rainfall** very likely at isolated places over Arunachal Pradesh, Assam & Meghalaya, Coastal Andhra Pradesh, Coastal Karnataka, Jammu-Kashmir-Ladakh-Gilgit-Baltistan-Muzaffarabad, Lakshadweep, Nagaland, Manipur, Mizoram and Tripura, Punjab, Sub Himalayan West Bengal & Sikkim, Telangana and West Madhya Pradesh.
- ❖ **Thunderstorm accompanied with lightning & gusty winds(30-40kmph)** very likely at isolated places over Bihar, Gangetic West Bengal, Interior Karnataka, Jharkhand, Odisha and West Madhya Pradesh.
- ❖ **Thunderstorm accompanied with Lightning** very likely at isolated places over Andhra Pradesh, Arunachal Pradesh, Assam & Meghalaya, Chhattisgarh, Coastal Karnataka, East Madhya Pradesh, Jammu-Kashmir-Ladakh-Gilgit-Baltistan-Muzaffarabad, Kerala & Mahe, Lakshadweep, Maharashtra, Nagaland, Manipur, Mizoram and Tripura, Tamil Nadu Puducherry & Karaikal, Telangana, Uttar Pradesh and Uttarakhand.
- ❖ **Strong Surface Winds** very likely at isolated places over Andhra Pradesh, Kerala & Mahe, Lakshadweep and Tamil Nadu Puducherry & Karaikal.

Squally wind with speed reaching 45 kmph to 55 kmph gusting to 65 kmph is likely to prevail along and off Somalia, many parts of west central Arabian Sea, many parts of southwest Arabian Sea.

Squally weather with wind speed reaching 40 - 50 kmph gusting to 60 kmph likely to prevail over few parts of

**\*Red color warning does not mean "Red Alert" Red color warning means "Take Action"**

Forecast and warning for any day is valid from 0830 hours IST of day till 0830 hours IST of next day

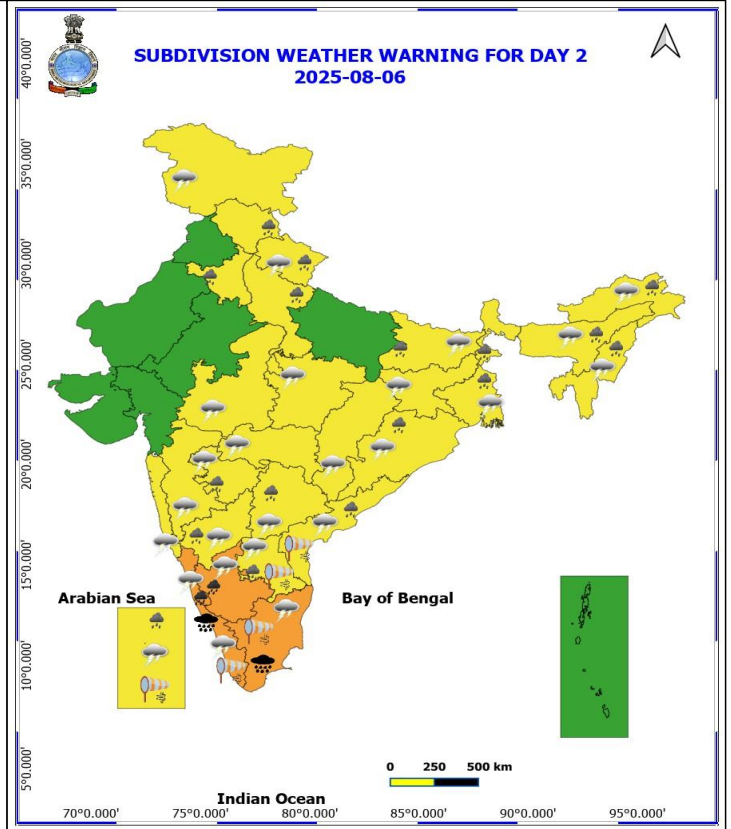
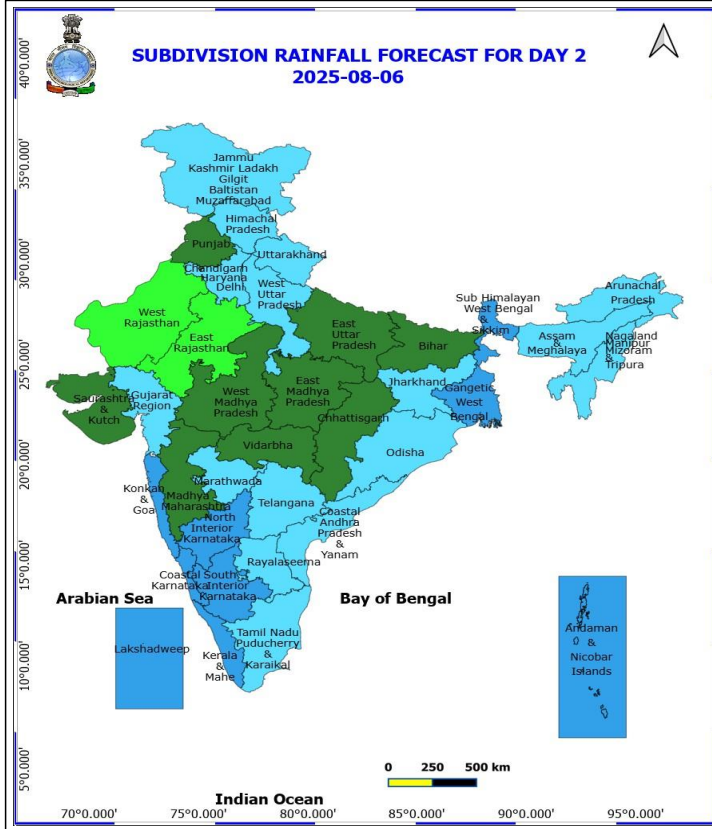
For more details kindly visit <https://mausam.imd.gov.in> or contact 011-2434-4599

(Service to the nation since 1875)



eastcentral Arabian Sea, along and off Kerala, Karnataka coasts, over Lakshadweep, Maldives, Comorin areas, over Gulf of Mannar, Sri Lanka coasts, some parts of southwest Bay of Bengal.





## 6 August (Day 2)

- ❖ **Heavy to Very Heavy Rainfall with isolated Extremely Heavy Rainfall** very likely at isolated places over Kerala & Mahe and Tamil Nadu Puducherry & Karaikal.
- ❖ **Heavy to Very Heavy Rainfall** very likely at isolated places over Coastal Karnataka and South Interior Karnataka.
- ❖ **Heavy Rainfall** very likely at isolated places over Andhra Pradesh, Arunachal Pradesh, Assam & Meghalaya, Bihar, Haryana, Chandigarh & Delhi, Himachal Pradesh, Lakshadweep, Marathwada, Nagaland, Manipur, Mizoram and Tripura, North Interior Karnataka, Odisha, Telangana, Uttarakhand, West Bengal & Sikkim and West Uttar Pradesh.
- ❖ **Thunderstorm accompanied with lightning & gusty winds(30-40kmph)** very likely at isolated places over Bihar, Gangetic West Bengal, Interior Karnataka, Jharkhand, Odisha and West Madhya Pradesh.
- ❖ **Thunderstorm accompanied with Lightning** very likely at isolated places over Andhra Pradesh, Arunachal Pradesh, Assam & Meghalaya, Chhattisgarh, Coastal Karnataka, East Madhya Pradesh, Jammu-Kashmir-Ladakh-Gilgit-Baltistan-Muzaffargarh, Kerala & Mahe, Konkan & Goa, Lakshadweep, Maharashtra, Nagaland, Manipur, Mizoram and Tripura, Tamil Nadu Puducherry & Karaikal, Telangana and Uttarakhand.
- ❖ **Strong Surface Winds** very likely at isolated places over Andhra Pradesh, Kerala & Mahe, Lakshadweep and Tamil Nadu Puducherry & Karaikal.

Squally wind with speed reaching 45 kmph to 55 kmph gusting to 65 kmph is likely to prevail along and off Somalia, many parts of west central Arabian Sea, some parts of southwest Arabian Sea.

Squally weather with wind speed reaching 40 - 50 kmph gusting to 60 kmph likely to prevail over few parts of eastcentral adjoining southeast Arabian Sea, along and off Kerala, Karnataka coasts, over Lakshadweep, Maldives,

**\*Red color warning does not mean "Red Alert" Red color warning means "Take Action"**

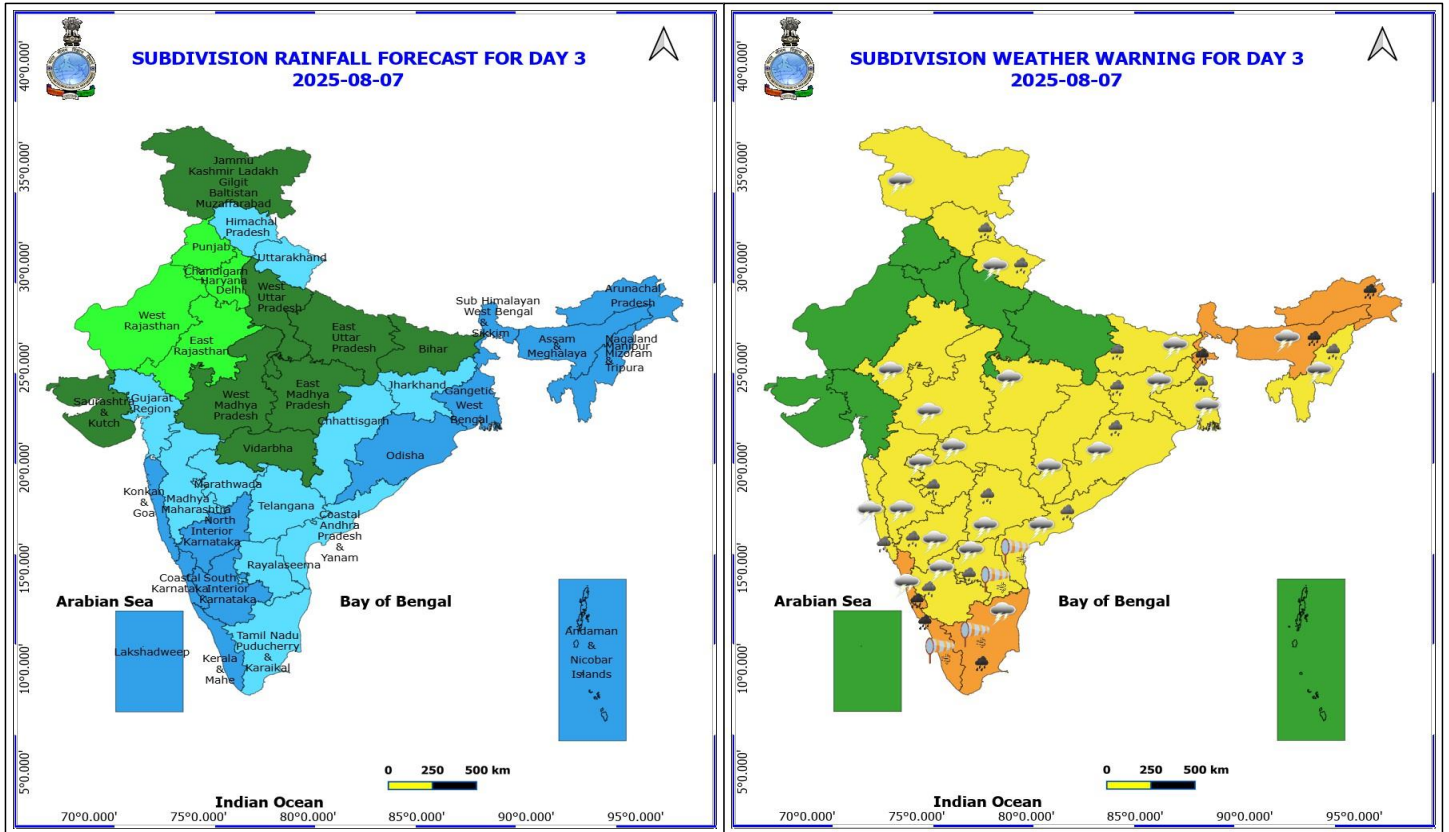
Forecast and warning for any day is valid from 0830 hours IST of day till 0830 hours IST of next day

For more details kindly visit <https://mausam.imd.gov.in> or contact 011-2434-4599

(Service to the nation since 1875)



Comorin areas, over Gulf of Mannar, Sri Lanka coasts, some parts of southwest Bay of Bengal.



### 7 August (Day 3)

- ❖ **Heavy to Very Heavy Rainfall** very likely at isolated places over Arunachal Pradesh, Assam & Meghalaya, Coastal Karnataka, Kerala & Mahe, Sub Himalayan West Bengal & Sikkim and Tamil Nadu Puducherry & Karaikal.
- ❖ **Heavy Rainfall** very likely at isolated places over Andhra Pradesh, Bihar, Gangetic West Bengal, Himachal Pradesh, Interior Karnataka, Jharkhand, Konkan & Goa, Marathwada, Nagaland, Manipur, Mizoram and Tripura, Odisha, Telangana and Uttarakhand.
- ❖ **Thunderstorm accompanied with lightning & gusty winds(30-40kmph)** very likely at isolated places over Bihar, Gangetic West Bengal, Interior Karnataka, Jharkhand, Odisha and West Madhya Pradesh.
- ❖ **Thunderstorm accompanied with Lightning** very likely at isolated places over Andhra Pradesh, Assam & Meghalaya, Chhattisgarh, Coastal Karnataka, East Madhya Pradesh, East Rajasthan, Jammu-Kashmir-Ladakh-Gilgit-Baltistan-Muzaffarabad, Konkan & Goa, Maharashtra, Nagaland, Manipur, Mizoram and Tripura, Tamil Nadu Puducherry & Karaikal, Telangana and Uttarakhand.
- ❖ **Strong Surface Winds** very likely at isolated places over Andhra Pradesh, Kerala & Mahe and Tamil Nadu Puducherry & Karaikal.

Squally wind with speed reaching 45 kmph to 55 kmph gusting to 65 kmph is likely to prevail along and off Somalia, many parts of west central Arabian Sea, some parts of southwest Arabian Sea.

Squally weather with wind speed reaching 40 - 50 kmph gusting to 60 kmph likely to prevail over few parts of eastcentral, along and off Kerala, Karnataka coasts, over Lakshadweep, Maldives, Comorin areas, over Gulf of Mannar, Sri Lanka coasts, some parts of south Bay of Bengal.

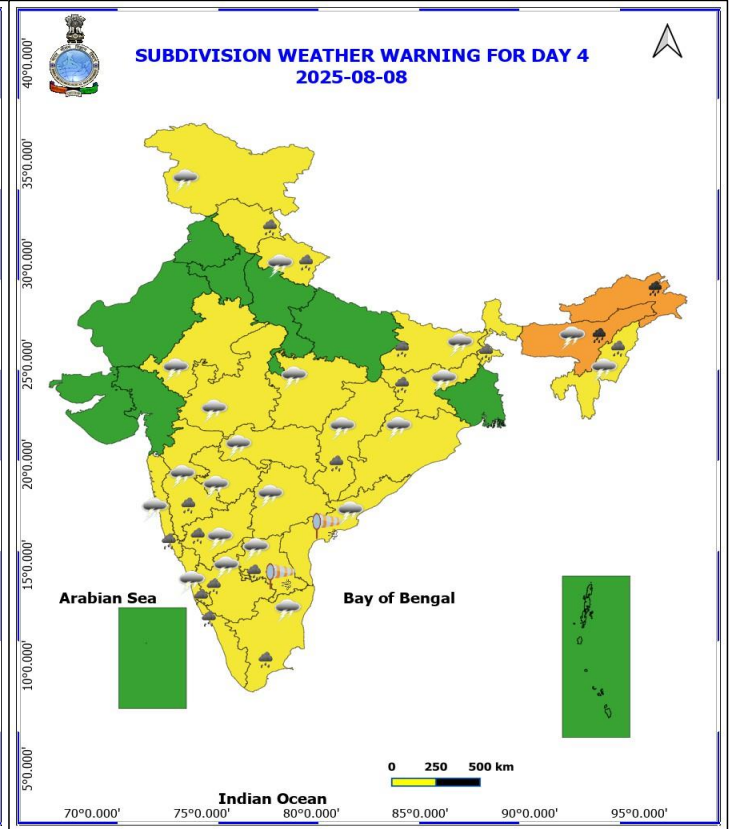
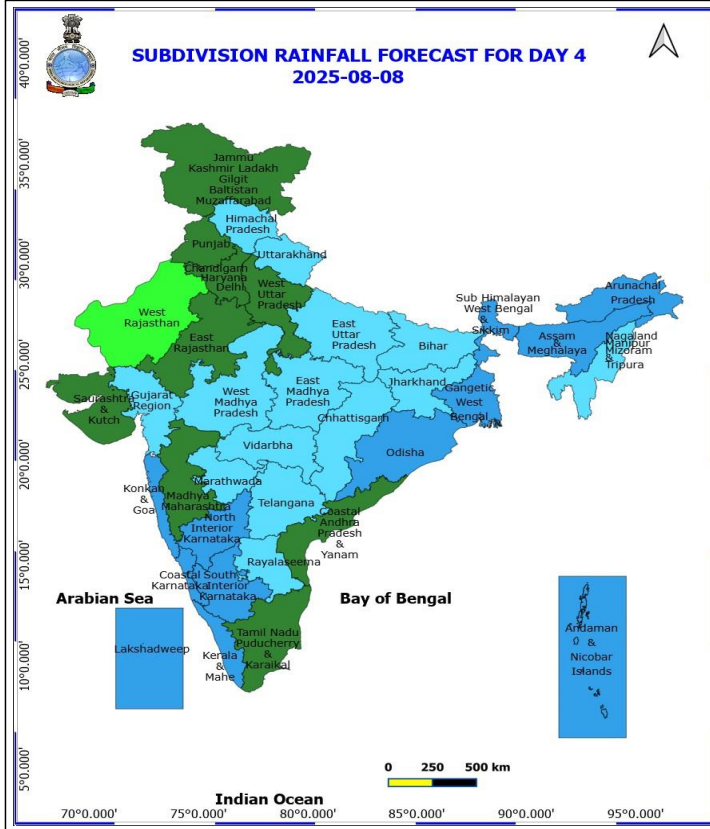
**\*Red color warning does not mean "Red Alert" Red color warning means "Take Action"**

Forecast and warning for any day is valid from 0830 hours IST of day till 0830 hours IST of next day

For more details kindly visit <https://mausam.imd.gov.in> or contact 011-2434-4599

(Service to the nation since 1875)



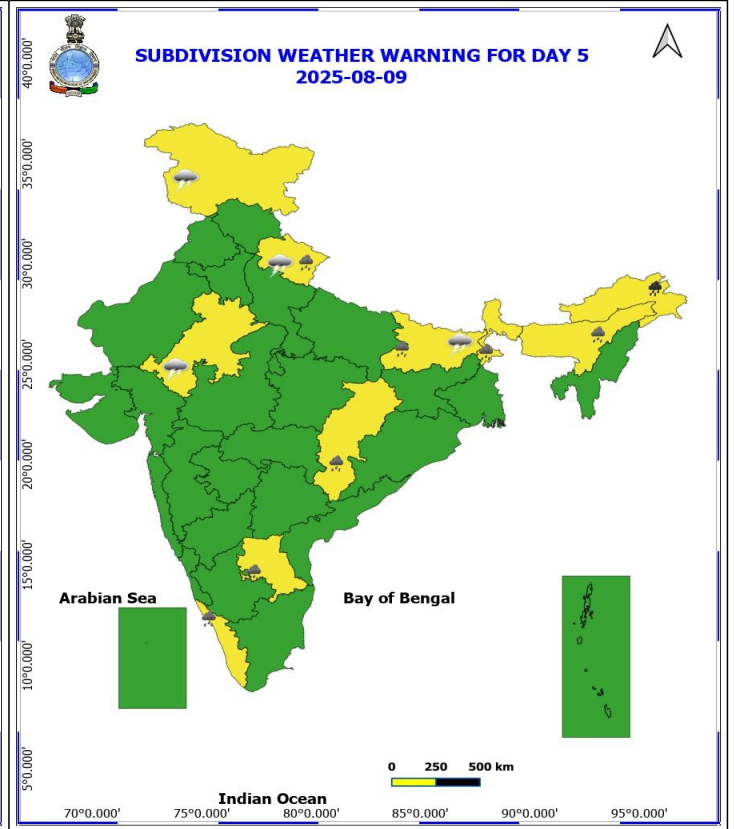
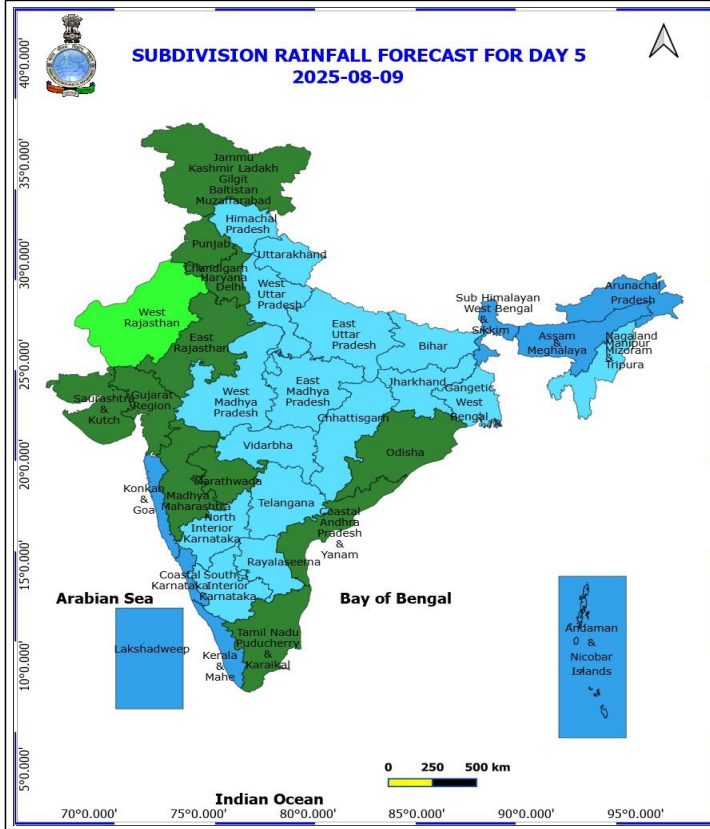


### 8 August (Day 4)

- ❖ **Heavy to Very Heavy Rainfall** likely at isolated places over Arunachal Pradesh and Assam & Meghalaya.
- ❖ **Heavy Rainfall** likely at isolated places over Bihar, Chhattisgarh, Himachal Pradesh, Jharkhand, Karnataka, Kerala & Mahe, Konkan & Goa, Madhya Maharashtra, Nagaland, Manipur, Mizoram and Tripura, Rayalaseema, Sub Himalayan West Bengal & Sikkim, Tamil Nadu Puducherry & Karaikal and Uttarakhand.
- ❖ **Thunderstorm accompanied with lightning & gusty winds(30-40kmph)** likely at isolated places over Bihar, Interior Karnataka, Jharkhand, Odisha and West Madhya Pradesh.
- ❖ **Thunderstorm accompanied with Lightning** likely at isolated places over Andhra Pradesh, Assam & Meghalaya, Chhattisgarh, Coastal Karnataka, East Madhya Pradesh, East Rajasthan, Jammu-Kashmir-Ladakh-Gilgit-Baltistan-Muzaffarabad, Konkan & Goa, Maharashtra, Nagaland, Manipur, Mizoram and Tripura, Tamil Nadu Puducherry & Karaikal, Telangana and Uttarakhand.
- ❖ **Strong Surface Winds** likely at isolated places over Andhra Pradesh.

Squally wind with speed reaching 45 kmph to 55 kmph gusting to 65 kmph is likely to prevail along and off Somalia, Oman coasts, most parts of westcentral Arabian Sea, some parts of southwest Arabian Sea.

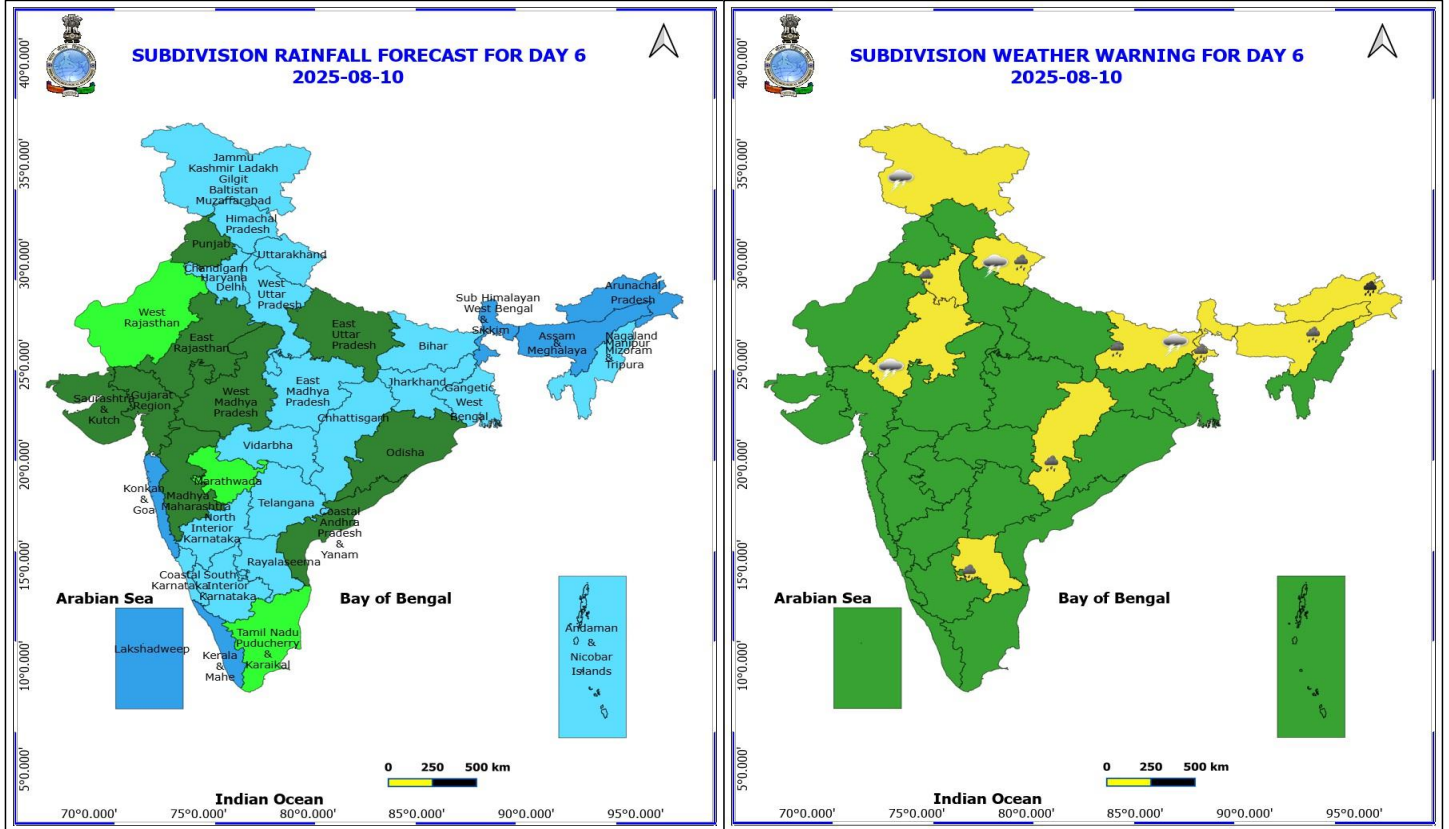
Squally weather with wind speed reaching 40 - 50 kmph gusting to 60 kmph likely to prevail over few parts of eastcentral, along and off Kerala, Karnataka coasts, over Lakshadweep, Maldives, Comorin areas, over Gulf of Mannar, Sri Lanka coasts, some parts of southwest Bay of Bengal.



**9 August (Day 5)**

- ❖ **Heavy to Very Heavy Rainfall** likely at isolated places over Arunachal Pradesh.
- ❖ **Heavy Rainfall** likely at isolated places over Assam & Meghalaya, Bihar, Chhattisgarh, Kerala & Mahe, Rayalaseema, Sub Himalayan West Bengal & Sikkim and Uttarakhand.
- ❖ **Thunderstorm accompanied with lightning & gusty winds(30-40kmph)** likely at isolated places over Bihar and Jammu-Kashmir-Ladakh-Gilgit-Baltistan-Muzaffargarh.
- ❖ **Thunderstorm accompanied with Lightning** likely at isolated places over East Rajasthan and Uttarakhand.

**No Fishermen Warning**

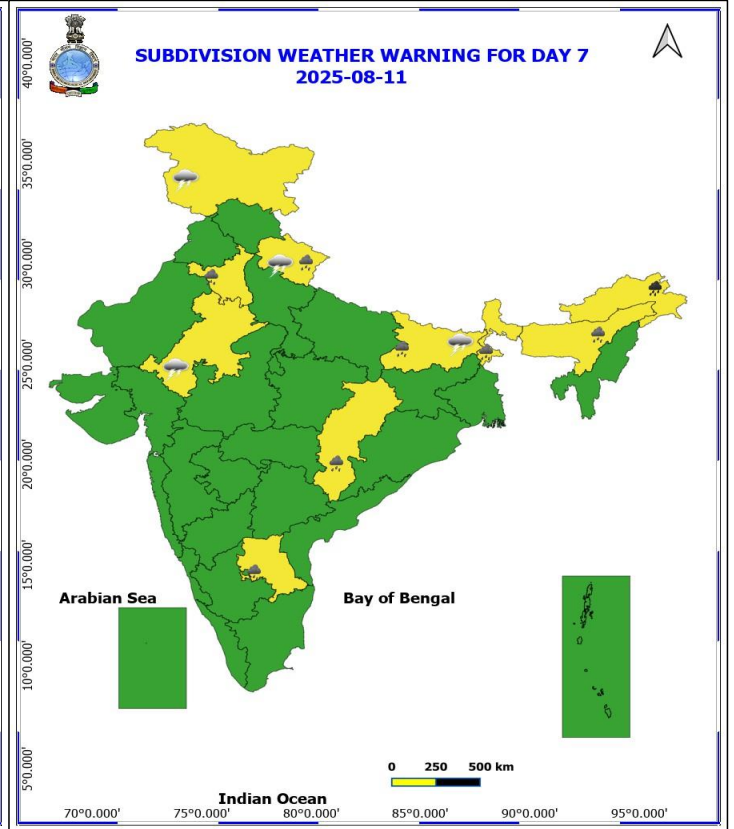
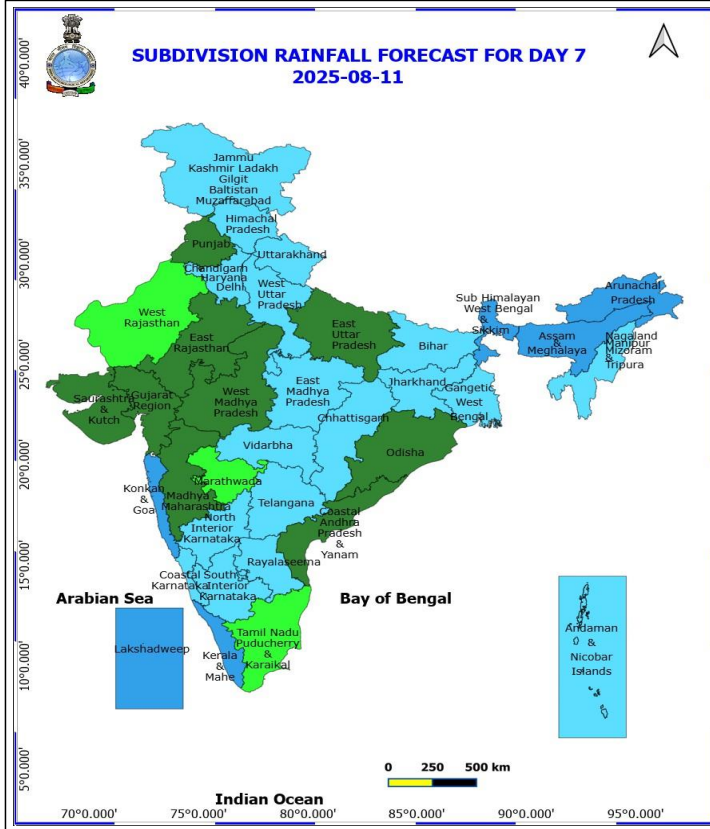


**10 August (Day 6)**

- ❖ **Heavy to Very Heavy Rainfall** likely at isolated places over Arunachal Pradesh.
- ❖ **Heavy Rainfall** likely at isolated places over Assam & Meghalaya, Bihar, Chhattisgarh, Haryana, Chandigarh & Delhi, Rayalaseema, Sub Himalayan West Bengal & Sikkim and Uttarakhand.
- ❖ **Thunderstorm accompanied with lightning & gusty winds(30-40kmph)** likely at isolated places over Bihar and Jammu-Kashmir-Ladakh-Gilgit-Baltistan-Muzaffarabad.
- ❖ **Thunderstorm accompanied with Lightning** likely at isolated places over East Rajasthan and Uttarakhand.

**No Fishermen Warning**





### 11 August (Day 7)

- ❖ **Heavy to Very Heavy Rainfall** likely at isolated places over Arunachal Pradesh.
- ❖ **Heavy Rainfall** likely at isolated places over Assam & Meghalaya, Bihar, Chhattisgarh, Haryana, Chandigarh & Delhi, Rayalaseema, Sub Himalayan West Bengal & Sikkim and Uttarakhand.
- ❖ **Thunderstorm accompanied with lightning & gusty winds(30-40kmph)** likely at isolated places over Bihar and Jammu-Kashmir-Ladakh-Gilgit-Baltistan-Muzaffarabad.
- ❖ **Thunderstorm accompanied with Lightning** likely at isolated places over East Rajasthan and Uttarakhand.

**No Fishermen Warning**



## Flash Flood Warnings

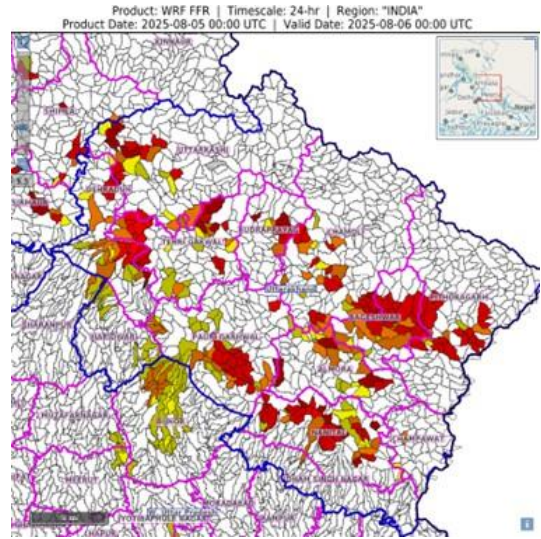
### 24 hours Outlook for the Flash Flood Risk (FFR) till 0530 IST of 06-08-2025 :

Low to Moderate flash flood risk likely over few watersheds & neighbourhoods of following Met Sub-divisions during next 24 hours.

Uttarakhand - Almora, Bageshwar, Chamoli, Champawat, Dehradun, Nanital, Pauri Garhwal, Pithoragarh, Rudraprayag, Tehri Garwal and Uttarkashi districts.

**West Uttar Pradesh** - Bijnor districts.

Surface runoff/ Inundation may occur at some fully saturated soils & low-lying areas over Area of Concern (AoC) as shown in map due to expected rainfall occurrence in next 24 hours.





## Table-1

### 7 Days Rainfall Forecast

| S.No. | Subdivision                  | 5- Aug | 6- Aug | 7- Aug | 8- Aug | 9- Aug | 10- Aug | 11- Aug |
|-------|------------------------------|--------|--------|--------|--------|--------|---------|---------|
|       |                              | Day 1  | Day 2  | Day 3  | Day 4  | Day 5  | Day 6   | Day 7   |
| 1     | ANDAMAN & NICOBAR ISLANDS    | WS     | WS     | WS     | WS     | WS     | FWS     | FWS     |
| 2     | ARUNACHAL PRADESH            | FWS    | FWS    | WS     | WS     | WS     | WS      | WS      |
| 3     | ASSAM & MEHGHALAYA           | FWS    | FWS    | WS     | WS     | WS     | WS      | WS      |
| 4     | N. M. M. & T.                | FWS    | FWS    | WS     | FWS    | FWS    | FWS     | FWS     |
| 5     | S.H. WEST BENGAL & SIKKIM    | WS     | WS     | WS     | WS     | WS     | WS      | WS      |
| 6     | GANGETIC WEST BENGAL         | FWS    | WS     | WS     | WS     | FWS    | FWS     | FWS     |
| 7     | ODISHA                       | SCT    | FWS    | WS     | WS     | SCT    | SCT     | SCT     |
| 8     | JHARKHAND                    | SCT    | FWS    | FWS    | FWS    | FWS    | FWS     | FWS     |
| 9     | BIHAR                        | FWS    | SCT    | SCT    | FWS    | FWS    | FWS     | FWS     |
| 10    | EAST UTTAR PRADESH           | FWS    | SCT    | SCT    | FWS    | FWS    | SCT     | SCT     |
| 11    | WEST UTTAR PRADESH           | WS     | FWS    | SCT    | SCT    | FWS    | FWS     | FWS     |
| 12    | UTTARAKHAND                  | WS     | FWS    | FWS    | FWS    | FWS    | FWS     | FWS     |
| 13    | HARYANA, CHD & DELHI         | FWS    | FWS    | ISOL   | SCT    | SCT    | FWS     | FWS     |
| 14    | PUNJAB                       | FWS    | SCT    | ISOL   | SCT    | SCT    | SCT     | SCT     |
| 15    | HIMACHAL PRADESH             | WS     | FWS    | FWS    | FWS    | FWS    | FWS     | FWS     |
| 16    | JAMMU AND KASHMIR AND LADAKH | WS     | FWS    | SCT    | SCT    | SCT    | FWS     | FWS     |
| 17    | WEST RAJASTHAN               | DRY    | ISOL   | ISOL   | ISOL   | ISOL   | ISOL    | ISOL    |
| 18    | EAST RAJASTHAN               | ISOL   | ISOL   | ISOL   | SCT    | SCT    | SCT     | SCT     |
| 19    | WEST MADHYA PRADESH          | SCT    | SCT    | SCT    | FWS    | FWS    | SCT     | SCT     |
| 20    | EAST MADHYA PRADESH          | FWS    | SCT    | SCT    | FWS    | FWS    | FWS     | FWS     |
| 21    | GUJRAT REGION                | FWS    | FWS    | FWS    | FWS    | SCT    | SCT     | SCT     |
| 22    | SAURASHTRA & KUTCH           | SCT    | SCT    | SCT    | SCT    | SCT    | SCT     | SCT     |
| 23    | KONKAN & GOA                 | FWS    | WS     | WS     | WS     | WS     | WS      | WS      |
| 24    | MADHYA MAHARASHTRA           | ISOL   | SCT    | FWS    | SCT    | SCT    | SCT     | SCT     |
| 25    | MARATHWADA                   | ISOL   | FWS    | FWS    | FWS    | SCT    | ISOL    | ISOL    |
| 26    | VIDARBHA                     | SCT    | SCT    | SCT    | FWS    | FWS    | FWS     | FWS     |
| 27    | CHATTISGARH                  | SCT    | SCT    | FWS    | FWS    | FWS    | FWS     | FWS     |
| 28    | COASTAL ANDHRA PRADESH       | FWS    | FWS    | FWS    | SCT    | SCT    | SCT     | SCT     |
| 29    | TELANGANA                    | FWS    | FWS    | FWS    | FWS    | FWS    | FWS     | FWS     |
| 30    | RAYALASEEMA                  | FWS    | FWS    | FWS    | FWS    | FWS    | FWS     | FWS     |
| 31    | TAMILNADU & PUDUCHERRY       | SCT    | FWS    | FWS    | SCT    | SCT    | ISOL    | ISOL    |
| 32    | COSTAL KARNATAKA             | WS     | WS     | WS     | WS     | WS     | FWS     | FWS     |
| 33    | NORTH INTERIOR KARNATAKA     | FWS    | WS     | WS     | WS     | FWS    | FWS     | FWS     |
| 34    | SOUTH INTERIOR KARNATAKA     | WS     | WS     | WS     | WS     | FWS    | FWS     | FWS     |
| 35    | KERALA                       | WS     | WS     | WS     | WS     | WS     | WS      | WS      |
| 36    | LAKSHDWEEP                   | WS     | WS     | WS     | WS     | WS     | WS      | WS      |

| Legend | Category                      | %Stations |
|--------|-------------------------------|-----------|
| WS     | Widespread/Most Places        | 76-100    |
| FWS    | Fairly Widespread/Many Places | 51-75     |
| SCT    | Scattered/ A Few Places       | 26-50     |
| ISOL   | Isolated Places               | 1-25      |
| DRY    | No Rain                       | 0         |

\*Red color warning does not mean "Red Alert" Red color warning means "Take Action"  
Forecast and warning for any day is valid from 0830 hours IST of day till 0830 hours IST of next day  
For more details kindly visit <https://mausam.imd.gov.in> or contact 011-2434-4599

(Service to the nation since 1875)

Fig. 1: Maximum Temperatures Dated 2025-08-04

Fig. 2: Departure of Maximum Temp. Dated 2025-08-04

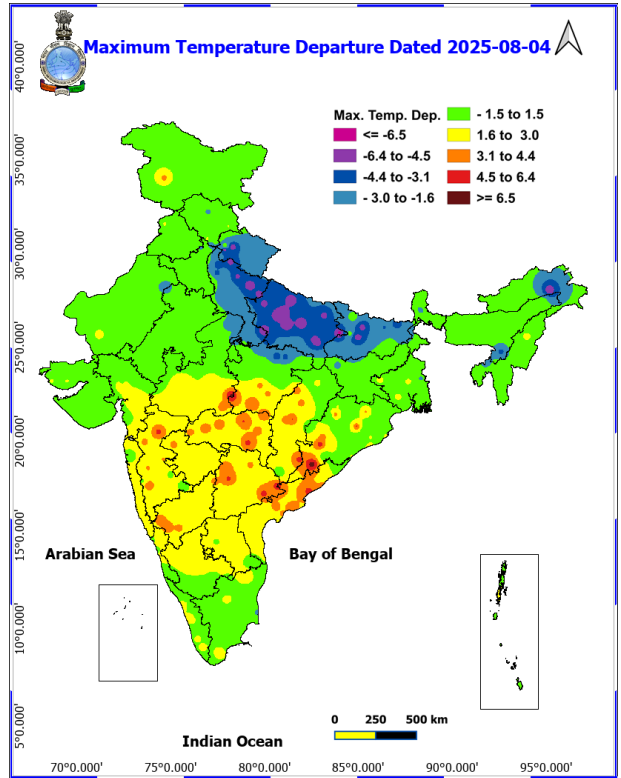
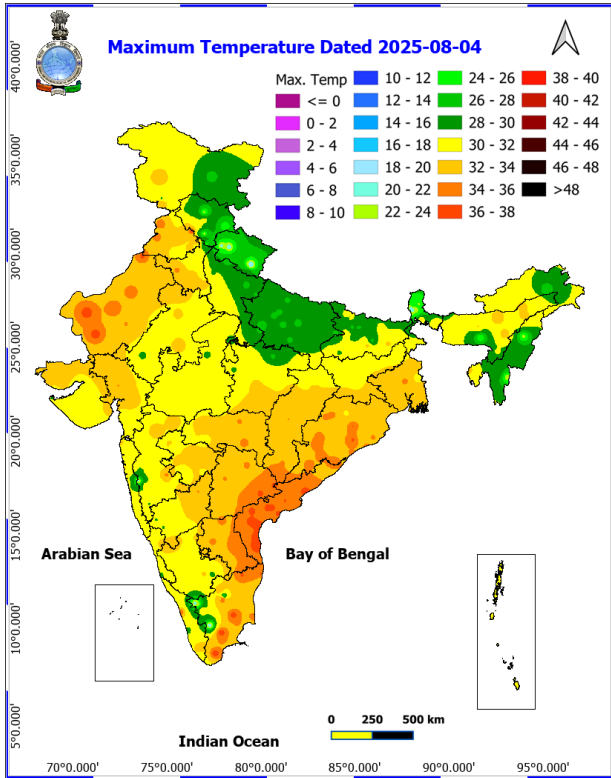
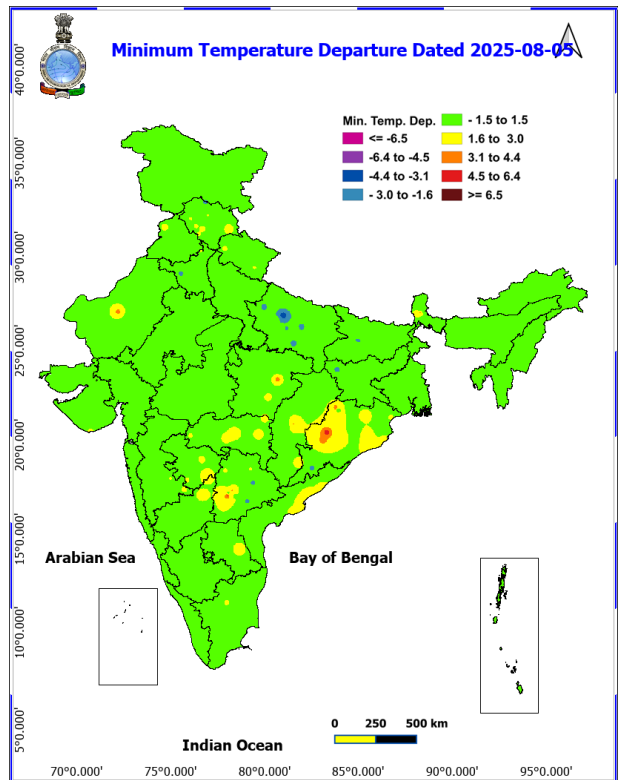
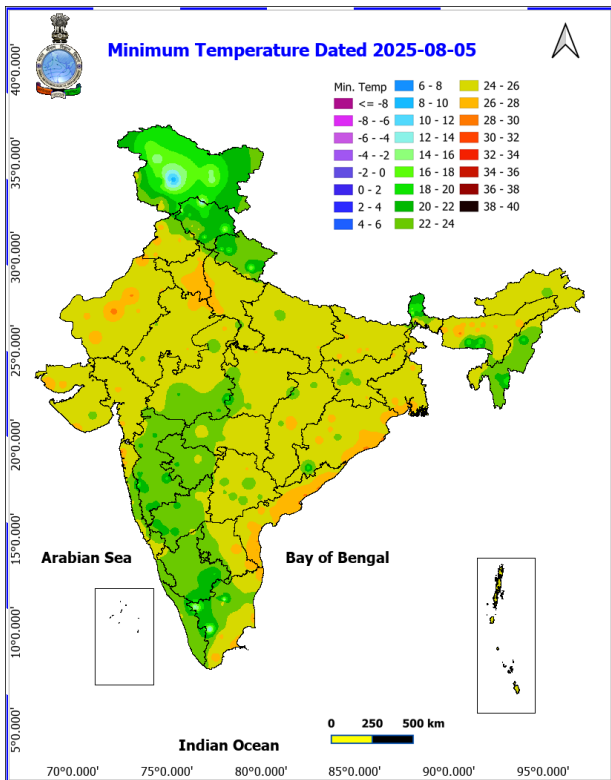


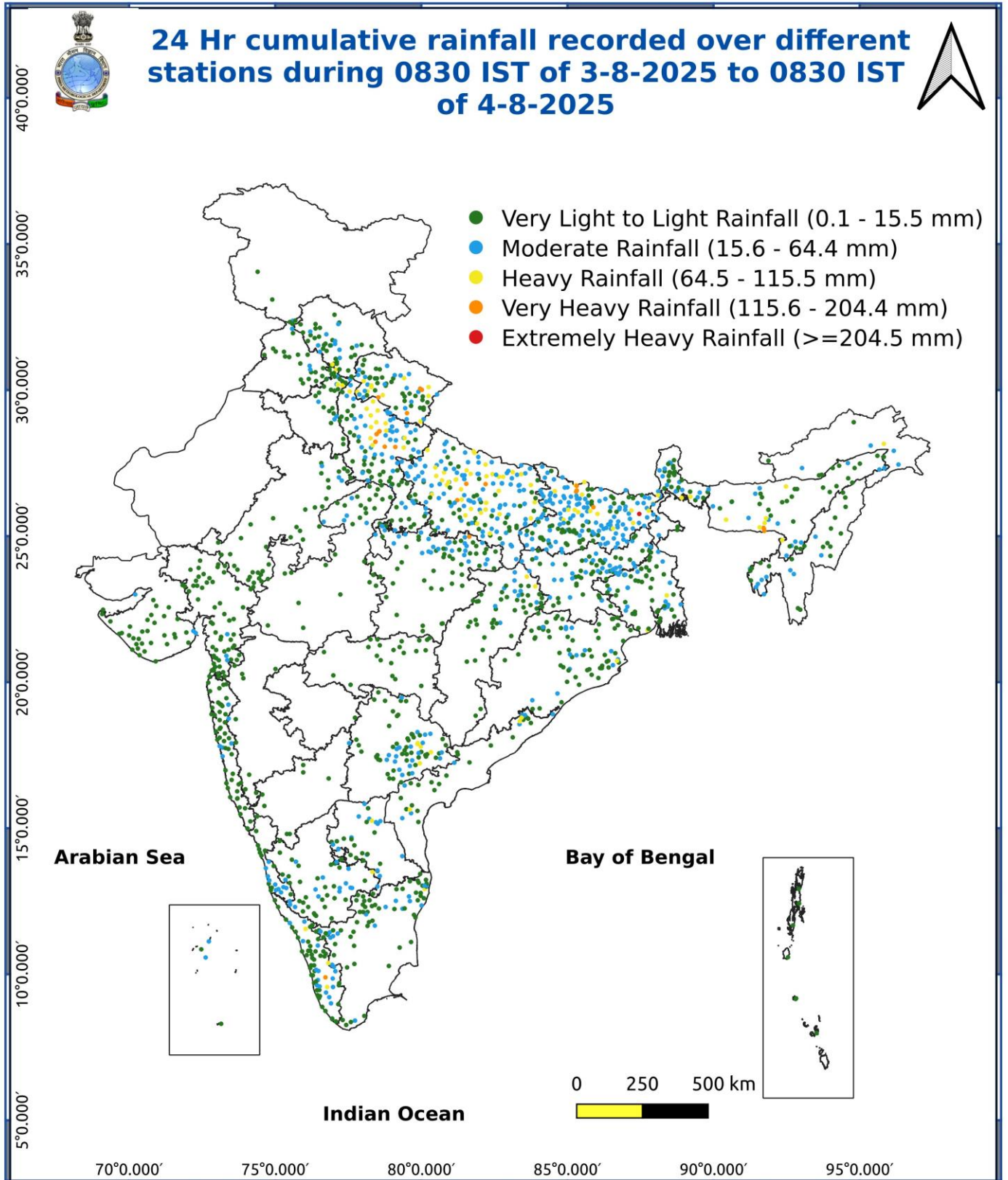
Fig. 3: Minimum Temperatures Dated 2025-08-05

Fig. 4: Departure of Minimum Temp. Dated 2025-08-05



**\*Red color warning does not mean "Red Alert" Red color warning means "Take Action"**  
Forecast and warning for any day is valid from 0830 hours IST of day till 0830 hours IST of next day  
For more details kindly visit <https://mausam.imd.gov.in> or contact 011-2434-4599

(Service to the nation since 1875)





### Impact & Action Suggested due to

**Extremely heavy rainfall** very likely at isolated places over Kerala, ghat areas of Tamil Nadu on 05<sup>th</sup> & 06<sup>th</sup> August.

Isolated **very heavy rainfall** over Bihar, Himachal Pradesh on 05<sup>th</sup>; Sub-Himalayan West Bengal & Sikkim on 07<sup>th</sup>; Uttarakhand, Haryana, Uttar Pradesh on 05<sup>th</sup>; Arunachal Pradesh on during 07<sup>th</sup>-10<sup>th</sup> August; Assam & Meghalaya on 07<sup>th</sup> & 08<sup>th</sup> August.

### Impact Expected

Localized Flooding of roads, water logging in low lying areas and closure of underpasses mainly in urban areas of the above region.

Occasional reduction in visibility due to heavy rainfall.

Disruption of traffic in major cities due to water logging in roads leading to increased travel time.

Minor damage to kutcha roads.

Possibilities of damage to vulnerable structure.

Localized Landslides/Mudslides/landslips/mudslips/landsinks/mudsinks.

Damage to horticulture and standing crops in some areas due to inundation.

It may lead to riverine flooding in some river catchments (for riverine flooding please visit Web page of CWC)

### Action Suggested

Check for traffic congestion on your route before leaving for your destination.

Follow any traffic advisories that are issued in this regard.

Avoid going to areas that face the water logging problems often.

Avoid staying in vulnerable structure.

### Agromet advisories for various parts of the country

#### Agromet advisories for likely impact of Heavy / Heavy to Very Heavy / Extremely Heavy Rainfall

In **Arunachal Pradesh**, postpone all fresh sowing operations till cessation of heavy rains. Avoid fresh transplanting of rice in lowlands during heavy rainfall. Cover rice fields with natural mulches like dry leaves or straw to avert the adverse impact of rain. Ensure proper drainage in rice, maize, finger millet, soybean and vegetables and fruit orchards to avoid waterlogging. Provide strong support to fruit-bearing plants to prevent them from bending or breaking during heavy rains.

In **Assam**, postpone the sowing of sesame, green gram and pigeon pea till cessation of heavy rains in **Kokrajhar** and

**Bongaigaon districts.** In **Central Brahmaputra Valley Zone**, harvest matured jute immediately and keep the bundles of harvested produce in high land or shed to avoid retting in contaminated water. Avoid sowing of sesame during heavy rainfall. To prevent waterlogging, ensure proper drainage in *Sali* rice, green gram and pigeon pea fields in **Lower Brahmaputra Valley Zone**; *Sali* rice, turmeric and already sown sesame fields in **Central Brahmaputra Valley Zone**; rice and sesame fields in **Hill Zone** and *Sali* rice fields in **North Bank Plain Zone, Upper Brahmaputra Valley Zone** and **Barak Valley Zone**.

In **Meghalaya**, avoid transplanting of rice during heavy rainfall. Ensure proper drainage in rice, maize, turmeric, chilli, okra and bitter gourd fields to prevent waterlogging. Provide staking / support to tall and fragile crops like banana, papaya, bottle gourd etc. to prevent lodging.

In **Sub-Himalayan West Bengal**, make provision to drain out excess water from rice, ginger, vegetable fields and fruit orchards in **Hill Zone** and *aman* paddy and vegetable fields in **Terai Zone**. Cover the chilli seedlings with plastic to protect them from heavy rains in **Terai Zone**.

In **Bihar**, ensure proper drainage in maize, vegetables, ragi, kodo, sava, etc. in low-lying areas and strengthen field bunds in **South Bihar Alluvial Zone**. Maintain proper drainage in maize fields and do not allow rain water to accumulate in the fields of ragi, kodo, sava, china etc. in **North East Alluvial Zone**.

In **Uttarakhand**, to avoid waterlogging, maintain proper drainage channels in fields of rice, sugarcane, maize, black gram, green gram, soybean, and vegetables in **Bhabar and Tarai Zone** and barnyard millet, finger millet, green gram and black gram in **Sub Humid Sub Tropic Zone**. Postpone sowing of green gram and soybean in **Nainital** district. In **Hill Zone**, strengthen the bunds to prevent surface runoff of water. Postpone sowing of vegetable pea in case of excessive wet soil conditions. Maintain proper drainage channels in the crop fields.

In **Himachal Pradesh**, cover the cauliflower nursery with plastic sheets to prevent damage from heavy rainfall in **High Hills Sub Temperate Wet Zone**. Make proper drainage channels in vegetable fields in **Mid Hills Sub Humid Zone**; rice, maize and vegetable fields in **Sub Montane and Low Hills Sub Tropical Zone** and kidney beans, finger millet, cucurbits and vegetables in **High Hills Sub Temperate Wet Zone**.

In **Madhya Pradesh**, provide adequate drainage in the fields of rice and vegetables in **Bundelkhand Zone**.

In **Chhattisgarh**, drain out excess water from the fields of pigeon pea, vegetables and transplanted rice in **North Hill Zone**.

In **Uttar Pradesh**, postpone sowing of pigeon pea, chilli, onion and planting of banana and papaya in Bundelkhand Zone and make necessary arrangements for drainage of excess water from the fields. In Eastern Plain Zone, provide proper drainage in the fields of pigeon pea, soybean, maize, groundnut, green gram, black gram and barnyard millet.

In **Kerala**, provide adequate drainage in fields of rice, coconut, banana and ginger. Provide support to banana plantations. Make the vegetable pandals stronger.

In **Tamil Nadu**, provide support to sugarcane and banana plants to prevent lodging. Provide proper drainage facility in rice nursery in **North Eastern Zone** and standing crop fields in **Cauvery Delta Zone**.

#### Livestock / Fishery

Keep the animals inside the shed during heavy rainfall and provide them balanced feed.

Store feed and fodder in a safe place to prevent spoilage.

Construct an outlet with proper netting around the ponds to drain out excess water, thereby preventing fish from escaping in case of overflow.

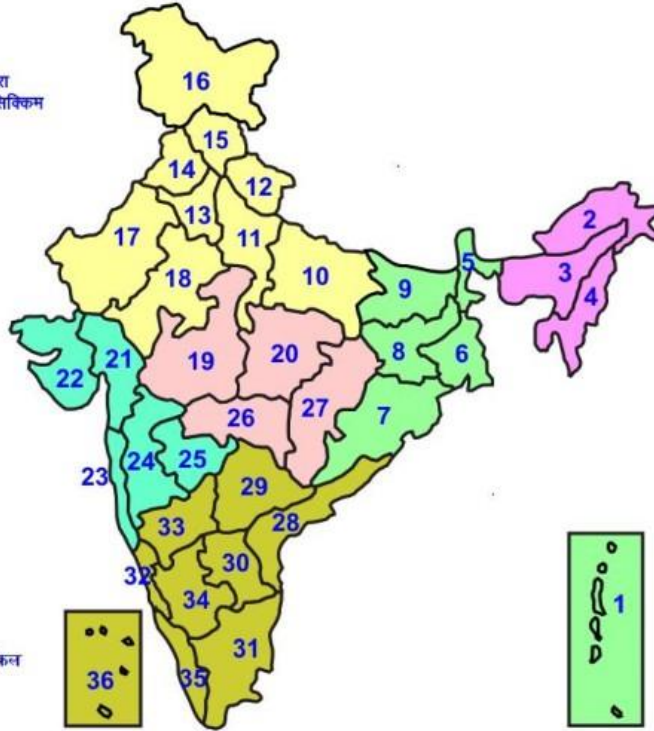


**Agromet advisories for likely impact of Thunderstorm / Gusty Winds / Squally Winds**

Provide mechanical support to horticultural crops and staking or support to vegetables and young fruit plants / fruit-bearing plants to avoid lodging due to strong winds.

## LEGENDS

- 1 अंडमान और निकोबार द्वीप समुह
- 2 अरुणाचल प्रदेश
- 3 असम और मेघालय
- 4 नागालैंड मनीपुर मीजोरम और त्रिपुरा
- 5 उप हिमालय पश्चिम बंगाल एवं सिक्किम
- 6 पश्चिम बंगाल
- 7 ओडिसा
- 8 झारखंड
- 9 बिहार
- 10 पूर्वी उत्तर प्रदेश
- 11 पश्चिम उत्तर प्रदेश
- 12 उत्तराखंड
- 13 हरियाणा चंडिगढ़ एवं दिल्ली
- 14 पंजाब
- 15 हिमाचल प्रदेश
- 16 जम्मू एवं कश्मीर एवं लद्दाख
- 17 पश्चिम राजस्थान
- 18 पूर्वी राजस्थान
- 19 पश्चिम मध्य प्रदेश
- 20 पूर्वी मध्य प्रदेश
- 21 गुजरात क्षेत्र
- 22 सौराष्ट्र एवं कच्छ
- 23 कोंकण एवं गोवा
- 24 मध्य महाराष्ट्र
- 25 मराठावाडा
- 26 विदर्भ
- 27 छत्तीसगढ़
- 28 तटीय आंध्र प्रदेश एवं यनम
- 29 तेलंगाना
- 30 रायलसीमा
- 31 तमिलनाडु, पुदुचेरी एवं कराईकल
- 32 तटिय कर्नाटक
- 33 आंतरिक उत्तरी कर्नाटक
- 34 आंतरिक दक्षिणी कर्नाटक
- 35 केरल एवं माहे
- 36 लक्षद्वीप



1. Andaman & Nicobar Islands
2. Arunachal Pradesh
3. Assam & Meghalaya
4. Nagaland, Manipur, Mizoram & Tripura
5. Sub-Himalayan West Bengal & Sikkim
6. Gangetic West Bengal
7. Orissa
8. Jharkhand
9. Bihar
10. East Uttar Pradesh
11. West Uttar Pradesh
12. Uttarakhand
13. Haryana, Chd & Delhi
14. Punjab
15. Himachal Pradesh
16. Jammu & Kashmir and Ladakh
17. West Rajasthan
18. East Rajasthan
19. West Madhya Pradesh
20. East Madhya Pradesh
21. Gujarat
22. Saurashtra
23. Konkan & Goa
24. Madhya Maharashtra
25. Marathwada
26. Vidharbha
27. Chhattisgarh
28. Coastal Andhra Pradesh & Yanam
29. Telangana
30. Rayalaseema
31. Tamilnadu, Puducherry & Karaikal
32. Coastal Karnataka
33. North Interior Karnataka
34. South Interior Karnataka
35. Kerala & Mahe
36. Lakshadweep

## SPATIAL DISTRIBUTION (% of Stations reporting)

| % Stations | Category                             | % Stations | Category                      |
|------------|--------------------------------------|------------|-------------------------------|
| 76-100     | Widespread (WS/ Most Places)         | 26-50      | Scattered (SCT/ A Few Places) |
| 51-75      | Fairly Widespread (FWS/ Many Places) | 1-25       | Isolated (ISOL)               |

### Subdivision Colour

- NO WARNING
- WATCH (BE UPDATED)
- ALERT (BE PREPARED TO TAKE ACTION)
- WARNING (TAKE ACTION)

### Probabilistic Forecast

| Terms       | Probability of Occurrence (%) |
|-------------|-------------------------------|
| Unlikely    | < 25                          |
| Likely      | 25 - 50                       |
| Very Likely | 50 - 75                       |
| Most Likely | > 75                          |

- |                          |                 |                      |                    |
|--------------------------|-----------------|----------------------|--------------------|
| Heavy Rain               | Very Heavy Rain | Extremely Heavy Rain | Heavy Snow         |
| Thunderstorm & Lightning | Hailstorm       | Dust Storm           | Dust Raising Winds |
| Strong surface winds     | Heat Wave       | Hot Day              | Warm Night         |
| Cold Wave                | Cold Day        | Ground Frost         | Fog                |
| Hot & Humid              |                 |                      |                    |

\*Red color warning does not mean "Red Alert" Red color warning means "Take Action"

Forecast and warning for any day is valid from 0830 hours IST of day till 0830 hours IST of next day

For more details kindly visit <https://mausam.imd.gov.in> or contact 011-2434-4599

(Service to the nation since 1875)



## LEGENDS

### WARNING

|                        |
|------------------------|
| WARNING (TAKE ACTION)  |
| ALERT (BE PREPARED)    |
| WATCH (BE UPDATED)     |
| NO WARNING (NO ACTION) |

### Probabilistic Forecast

| Terms       | Probability of Occurrence (%) |
|-------------|-------------------------------|
| Unlikely    | < 25                          |
| Likely      | 25 - 50                       |
| Very Likely | 50 - 75                       |
| Most Likely | > 75                          |



Heavy: 64.5 to 115.5 mm/cm \*  
Very Heavy: 115.6 to 204.4 mm/cm \*  
Extremely Heavy: > 204.4 mm/cm \*



When maximum temperature of a station reaches  $\geq 40^{\circ}\text{C}$  for plains and  $\geq 30^{\circ}\text{C}$  for hilly regions  
(a) Based on Departure from normal

Heat Wave: Maximum Temperature Departure from normal  $4.5^{\circ}\text{C}$  to  $6.4^{\circ}\text{C}$ .  
Severe Heat Wave: Maximum Temperature Departure from normal  $\geq 6.5^{\circ}\text{C}$

(b). Based on Actual maximum temperature

Heat Wave: When actual maximum temperature  $\geq 45^{\circ}\text{C}$ .  
Severe Heat Wave: When actual maximum temperature  $\geq 47^{\circ}\text{C}$

(c). Criteria for heat wave for coastal stations

When maximum temperature departure is  $> 4.5^{\circ}\text{C}$  from normal. Heat Wave may be described provided maximum temperature  $\geq 37^{\circ}\text{C}$



When maximum temperature remains  $40^{\circ}\text{C}$

Warm Night: When minimum temperature departure  $4.5^{\circ}\text{C}$  to  $6.4^{\circ}\text{C}$ .  
Severe Warm Night: When minimum temperature departure  $> 6.4^{\circ}\text{C}$ .



When minimum temperature of a station  $\leq 10^{\circ}\text{C}$  for plains and  $\leq 0^{\circ}\text{C}$  for hilly regions.

(a). Based on departure

Cold Wave: Minimum Temperature Departure from normal  $-4.5^{\circ}\text{C}$  to  $-6.4^{\circ}\text{C}$ .  
Severe Cold Wave: Minimum Temperature Departure from normal  $\leq -6.5^{\circ}\text{C}$

(b) Based on actual Minimum Temperature (for Plains only)

Cold Wave : When Minimum Temperature is  $\leq 4.0^{\circ}\text{C}$   
Severe Cold Wave: When Minimum Temperature is  $\leq 2.0^{\circ}\text{C}$

(c) For Coastal Stations

When Minimum Temperature departure is  $\leq -4.5^{\circ}\text{C}$  & actual Minimum Temperature is  $\leq 15^{\circ}\text{C}$



When minimum temperature of a station  $\leq 10^{\circ}\text{C}$  for plains and  $\leq 0^{\circ}\text{C}$  for hilly regions  
Based on departure

Cold Day: Maximum Temperature Departure from normal  $-4.5^{\circ}\text{C}$  to  $-6.4^{\circ}\text{C}$ .  
Severe Cold Day: Maximum Temperature Departure from normal  $\leq -6.5^{\circ}\text{C}$



Phenomenon of small droplets suspended in air and the horizontal visibility  $< 1\text{km}$

Moderate Fog: When the visibility between 500-200 metres  
Dense Fog: when the visibility between 50- 200 metres  
Very Dense Fog: when the visibility  $< 50$  metres



Sudden electrical discharges manifested by a flash of light (Lightning) and a sharp rumbling sound (thunder)



An ensemble of particles of dust or sand energetically lifted to great heights by a strong and turbulent wind.



Ice deposits on ground

Air temperature  $\leq 4^{\circ}\text{C}$  ( over Plains)



A strong wind that rises suddenly, lasts for atleast 1 minute.

Moderate: Wind speed 52-61 kmph  
Severe: Wind speed 62-87 kmph  
Very Severe: Wind speed  $> 87$  kmph



Effect of various waves in the sea over specific area

Rough to very rough: Wind speed 41-62 kmph (22-33 knots) & Wave height 2.5-6 metre  
High to very high: Wind speed 63-117 kmph ( 34-63 knots) & Wave height 6-14 metre  
Phenomenal: Wind speed  $> 117$  kmph ( $> 63$  knots) & Wave height  $> 14$  metre



Cyclonic Storm: Wind speed 62-87 kmph (34-47 knots)  
Severe Cyclonic Storm: Wind speed 88-117 kmph (48-63 knots)  
Very Severe Cyclonic Storm: Wind speed 118-165 kmph (64 - 89 knots)  
Extremely Severe Cyclonic Storm: Wind speed 166-220 kmph (90 -119 knots)  
Super Cyclone Storm: Wind speed  $> 220$  kmph ( $> 119$  knots)

\*Red color warning does not mean "Red Alert" Red color warning means "Take Action"

Forecast and warning for any day is valid from 0830 hours IST of day till 0830 hours IST of next day

For more details kindly visit <https://mausam.imd.gov.in> or contact 011-2434-4599

(Service to the nation since 1875)