

2026-07-11

Time of Issue: 08:24:00 hours IST  
(Morning)

## ALL INDIA WEATHER SUMMARY AND FORECAST BULLETIN

### Significant Weather Features

#### Weather forecast and Warnings:

##### Northwest India:

- **Fairly Widespread to Widespread** rainfall likely over Jammu-Kashmir-Ladakh-Gilgit-Baltistan-Muzaffarabad during 11th-12th July; Himachal Pradesh and Uttarakhand during 11th-16th July.
- **Fairly Widespread to Widespread** rainfall likely over East Uttar Pradesh during 11th-13th July.
- **Isolated to Scattered** rainfall likely over Jammu-Kashmir-Ladakh-Gilgit-Baltistan-Muzaffarabad during 13th-16th July.
- **Isolated to Scattered** rainfall likely over East Rajasthan, Haryana Chandigarh & Delhi, Punjab and West Rajasthan during 11th-16th July; West Uttar Pradesh during 11th-16th July; East Uttar Pradesh during 14th-16th July.
- Isolated **heavy rainfall** likely over Jammu-Kashmir-Ladakh-Gilgit-Baltistan-Muzaffarabad during 11th-12th July; Himachal Pradesh during 11th-15th July; Uttarakhand during 11th-16th July; Punjab during 11th-13th July; Haryana Chandigarh & Delhi during 11th-13th July; West Uttar Pradesh on 11th July; East Uttar Pradesh during 12th-14th July with isolated **very heavy rainfall** also likely over Haryana Chandigarh & Delhi, Himachal Pradesh, East Uttar Pradesh on 11th July.

##### Central India:

- **Isolated to Scattered** rainfall likely over West Madhya Pradesh during 11th-16th July; East Madhya Pradesh during 11th-14th July; Vidarbha during 11th-13th July; Chhattisgarh during 11th-12th July.
- **Fairly Widespread to Widespread** rainfall likely over East Madhya Pradesh during 15th-16th July; Vidarbha during 14th-16th July; Chhattisgarh during 13th-16th July.
- Isolated **thunderstorm, lightning & gusty winds (speed reaching 40-50 kmph gusting to 60 kmph)** likely over East Madhya Pradesh during 11th-14th July, **with gusty winds (speed reaching 30-40 kmph gusting to 50 kmph)** likely over West Madhya Pradesh during 11th-14th July; Vidarbha during 12th-14th July.
- Isolated **thunderstorm & lightning** likely over Chhattisgarh during 11th-14th July.
- Isolated **heavy rainfall** likely over East Madhya Pradesh during 14th-16th July; Chhattisgarh during 13th-16th July.

##### East India:

- **Isolated to Scattered** rainfall likely over Andaman & Nicobar Islands on 16th July; Jharkhand on 11th July; Bihar during 12th-16th July; Odisha during 11th-12th July.
- **Fairly Widespread to Widespread** rainfall likely over Andaman & Nicobar Islands during 11th-15th July; Gangetic West Bengal and Sub-Himalayan West Bengal & Sikkim during 11th-16th July; Jharkhand during 12th-16th July; Bihar on 11th July; Odisha during 13th-16th July.
- Isolated **thunderstorm, lightning & gusty winds (speed reaching 40-50 kmph gusting to 60 kmph)** likely over Andaman & Nicobar Islands during 11th-16th July; **with gusty winds (speed reaching 30-40 kmph gusting to 50 kmph)** likely over Bihar, Odisha and Sub-Himalayan West Bengal & Sikkim during 11th-16th July; Gangetic West Bengal during 11th-14th July.
- Isolated **thunderstorm & lightning** likely over Jharkhand during 11th-14th July.
- Isolated **heavy rainfall** likely over Odisha and Sub-Himalayan West Bengal & Sikkim during 13th-16th July; Gangetic West Bengal during 11th-14th July; Jharkhand during 13th-14th July; Bihar during 12th-14th July with isolated **very heavy rainfall** also likely over Sub-Himalayan West Bengal & Sikkim during 11th-12th July; Bihar on 11th July.

##### Northeast India:

- **Fairly Widespread to Widespread** rainfall likely over Arunachal Pradesh, Assam & Meghalaya and Nagaland,

\*Red color warning does not mean "Red Alert" Red color warning means "Take Action"

Forecast and warning for any day is valid from 0830 hours IST of day till 0830 hours IST of next day

For more details kindly visit <https://mausam.imd.gov.in> or contact 011-2434-4599

(Service to the nation since 1875)

Manipur, Mizoram & Tripura during 11th-16th July.

- Isolated **thunderstorm & lightning** likely over Arunachal Pradesh, Assam & Meghalaya and Nagaland, Manipur, Mizoram & Tripura during 11th-14th July.
- Isolated **heavy rainfall** likely over Arunachal Pradesh during 11th-16th July; Assam & Meghalaya and Nagaland, Manipur, Mizoram & Tripura during 12th-16th July with isolated **very heavy rainfall** also likely over Assam & Meghalaya and Nagaland, Manipur, Mizoram & Tripura on 11th July.

**West India:**

- **Fairly Widespread to Widespread** rainfall likely over Konkan & Goa during 11th-16th July.
- **Isolated to Scattered** rainfall likely over Gujarat Region, Madhya Maharashtra, Marathwada and Saurashtra & Kutch during 11th-16th July.

**South Peninsular India:**

- **Isolated to Scattered** rainfall likely over Coastal Andhra Pradesh & Yanam, North Interior Karnataka, South Interior Karnataka, Tamil Nadu, Puducherry & Karaikal and Telangana during 11th-16th July; Kerala & Mahe during 12th-16th July; Lakshadweep during 11th-16th July; Rayalaseema on 11th July and during 15th-16th July.
- **Fairly Widespread to Widespread** rainfall likely over Kerala & Mahe on 11th July; Coastal Karnataka during 11th-16th July.
- Isolated **thunderstorm, lightning & gusty winds (speed reaching 40-50 kmph gusting to 60 kmph)** likely over Coastal Andhra Pradesh & Yanam during 11th-12th July; Rayalaseema on 11th July; Telangana during 11th-14th July, **with gusty winds (speed reaching 30-40 kmph gusting to 50 kmph)** likely over Tamil Nadu, Puducherry & Karaikal during 11th-16th July; Coastal Karnataka, North Interior Karnataka and South Interior Karnataka on 11th July; Coastal Andhra Pradesh & Yanam during 13th-14th July.
- Strong Surface Winds likely over Coastal Karnataka, North Interior Karnataka and South Interior Karnataka on 11th July; Coastal Andhra Pradesh & Yanam, Rayalaseema and Telangana during 11th-14th July.

**Main Weather Observations:**

❖ **Rainfall distribution** (from 0830 hours IST of yesterday to 0530 hours IST of today): **at most places** over Assam & Meghalaya, Arunachal Pradesh, Kerala & Mahe, Himachal Pradesh, Uttarakhand, Sub-himalayan West Bengal & Sikkim, Nagaland, Manipur, Mizoram & Tripura, East Uttar Pradesh, Odisha, Gangetic West Bengal, Jharkhand, Bihar, Andaman & Nicobar Islands, Coastal Karnataka and Lakshadweep ; **at many places** over West Madhya Pradesh, Konkan & Goa , East Madhya Pradesh, Jammu & Kashmir and Ladakh, Haryana Chandigarh & Delhi, West Uttar Pradesh, Madhya Maharashtra , Punjab, Tamilnadu Puducherry & Karaikal, Chhattisgarh, Coastal Andhra Pradesh & Yanam and South Interior Karnataka; **Dry** over rest of the country.

❖ **Significant rainfall recorded(in cm)** (from 0830 hours IST of yesterday to 0530 hours IST of today): **Assam & Meghalaya:** Cherrapunji (dist East Khasi Hills) 13; **Nagaland, Manipur, Mizoram & Tripura:** Agartala AP (dist West Tripura) 6, Aizawl-lengpui (dist Mamit) 3; **East Uttar Pradesh:** Sultanpur-obs2 (dist Sultanpur) 6; **Odisha:** Bhubaneswar (dist Khordha) 5; **Tamilnadu Puducherry & Karaikal:** Nagapattinam (dist Nagapattinam) 4; **Gangetic West Bengal:** Haldia (dist Purba Medinipur) 3; **Jharkhand:** Daltonganj (dist Palamu) 3; **Bihar:** Purnea (dist Purnia), Bhagalpur (dist Bhagalpur) 3 Each; **Punjab:** Amritsar (rajasansi) AP (dist Amritsar) 3.

❖ **Heavy Rainfall observed** (from 0830 hours IST of yesterday to 0530 hours IST of today): **Heavy to very heavy rain** at isolated places over Assam & Meghalaya

❖ **Minimum Temperature Departures (as on 10-07-2026):** **markedly above normal(> 5.1°C)** at few places over Nagaland, Manipur, Mizoram & Tripura; at isolated places over Assam & Meghalaya, Bihar, West Uttar Pradesh, Himachal Pradesh, West Rajasthan, West Madhya Pradesh, East Madhya Pradesh, Gujarat Region and Saurashtra & Kutch. **appreciably above normal(3.1°C to 5.0°C)** at few places over Sub Himalayan West Bengal & Sikkim, Jharkhand and East Madhya Pradesh; at isolated places over Andaman & Nicobar Islands, Assam & Meghalaya, Odisha, Bihar, East Uttar Pradesh, West Uttar Pradesh, West Madhya Pradesh, Saurashtra & Kutch, Vidarbha, Coastal Andhra Pradesh & Yanam, Rayalaseema and Tamil Nadu, Puducherry & Karaikal. **above normal(1.6°C to 3.0°C)** at many places over Andaman & Nicobar Islands, Coastal Andhra Pradesh & Yanam and Lakshadweep; at few places over Gangetic West Bengal, Uttarakhand, Gujarat Region, Konkan & Goa, Vidarbha, Telangana, Rayalaseema, Tamil Nadu, Puducherry & Karaikal and Coastal Karnataka; at isolated places over Odisha, Jharkhand, Bihar, East Uttar Pradesh, Himachal Pradesh, Jammu-KashmirLadakh-Gilgit-Baltistan-Muzaffarabad, West Rajasthan, East Rajasthan, West Madhya Pradesh, East Madhya Pradesh, Saurashtra & Kutch, Madhya Maharashtra, Marathwada, North Interior Karnataka and Kerala & Mahe. **near normal(-1.5°C to 1.5°C)** at many places over Assam & Meghalaya, Nagaland, Manipur, Mizoram & Tripura, Sub Himalayan West Bengal & Sikkim, Gangetic West Bengal, Odisha, Bihar, East Uttar Pradesh, West Uttar Pradesh, Himachal Pradesh, Jammu-KashmirLadakh-Gilgit-Baltistan-Muzaffarabad, West Rajasthan, West Madhya Pradesh, Gujarat Region, Saurashtra & Kutch, Vidarbha and Coastal Karnataka; at most places over Arunachal Pradesh, Madhya Maharashtra, Marathwada, Chhattisgarh, North Interior Karnataka, South Interior Karnataka and Kerala & Mahe; at few places over Uttarakhand, Haryana-Chandigarh-Delhi, Punjab, East Rajasthan, East Madhya Pradesh, Konkan & Goa, Telangana, Rayalaseema, Tamil Nadu, Puducherry & Karaikal and Lakshadweep; at isolated places over Andaman & Nicobar Islands, Jharkhand and Coastal Andhra Pradesh & Yanam. **The lowest minimum temperature** of 18.0°C was reported at HALFLONG (ASSAM) over the Plains of India.

❖ **Maximum Temperature Departures (as on 10-07-2026):** **appreciably above normal(3.1°C to 5.0°C)** at few places over Jammu-KashmirLadakh-Gilgit-Baltistan-Muzaffarabad, Konkan & Goa, Telangana and North Interior Karnataka; at isolated places over Odisha, West Rajasthan, West Madhya Pradesh, Saurashtra & Kutch, Madhya Maharashtra, Vidarbha, Chhattisgarh, Coastal Andhra Pradesh & Yanam, Rayalaseema and Tamil Nadu, Puducherry & Karaikal. **above normal(1.6°C to 3.0°C)** at many places over Assam & Meghalaya, Sub Himalayan West Bengal & Sikkim and Coastal Karnataka; at most places over Gujarat Region; at few places over Arunachal Pradesh; at isolated places over Bihar, Himachal Pradesh and Marathwada. **near normal(-1.5°C to 1.5°C)** at many places over Punjab and South Interior Karnataka; at most places over Andaman & Nicobar Islands, East Rajasthan and Lakshadweep; at few places over East Uttar Pradesh, East Madhya Pradesh and Kerala & Mahe; at isolated places over Nagaland, Manipur, Mizoram & Tripura, Gangetic West Bengal, Jharkhand, West Uttar Pradesh, Uttarakhand and Haryana-Chandigarh-Delhi. **The highest maximum temperature** of 42.0°C was reported at SRIGANGANAGAR (RAJASTHAN).

**\*Red color warning does not mean "Red Alert" Red color warning means "Take Action"**

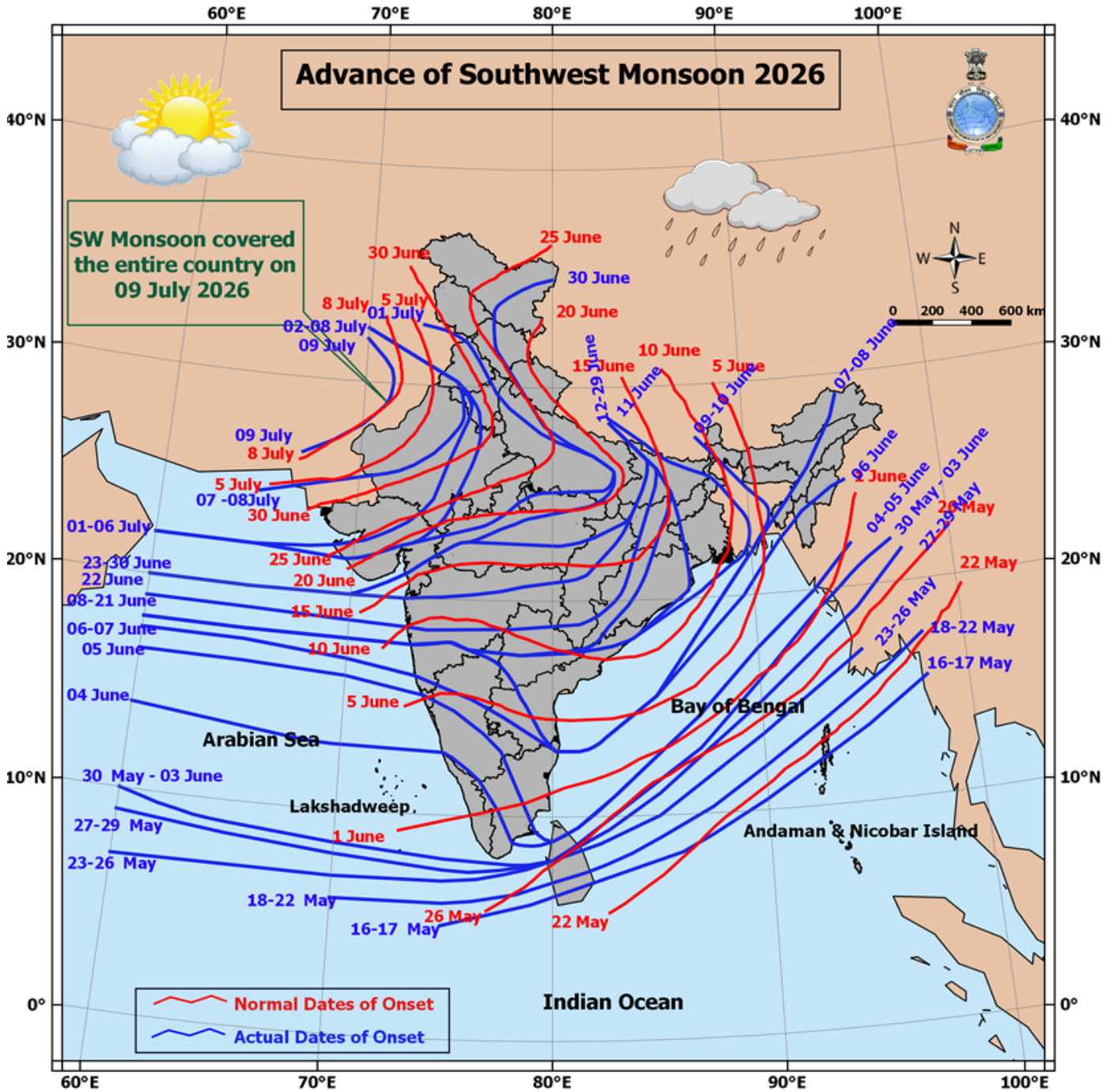
**Forecast and warning for any day is valid from 0830 hours IST of day till 0830 hours IST of next day**

**For more details kindly visit <https://mausam.imd.gov.in> or contact 011-2434-4599**

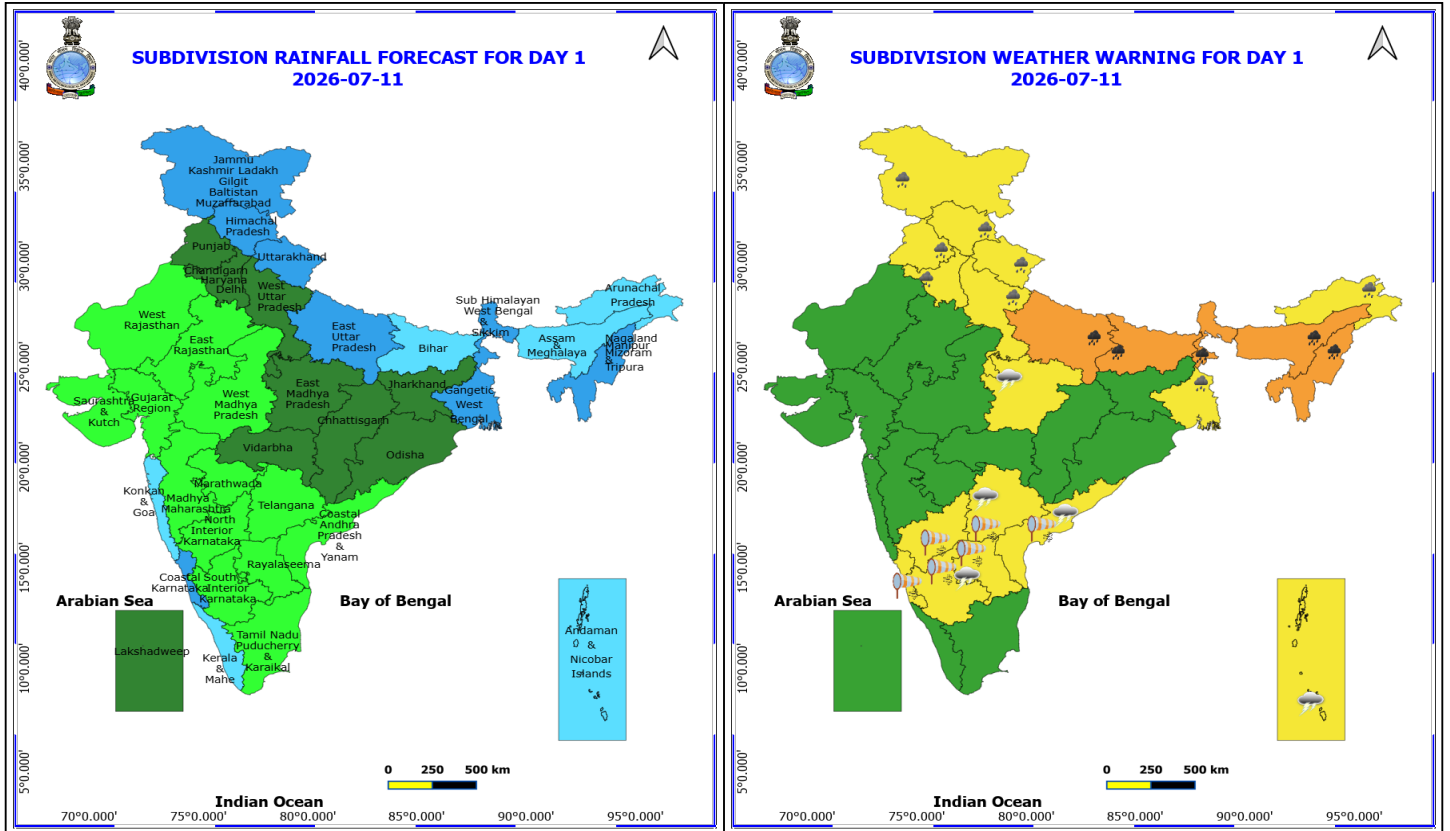
**(Service to the nation since 1875)**

**Meteorological Analysis (Based on 0530 hours IST)**

- The **Low Pressure area** over northern parts of central Uttar Pradesh has become less marked at 0530 hrs IST of today, the 11<sup>th</sup> July 2026. However, the associated cyclonic circulation lay over the East Uttar Pradesh between 3.1 & 5.8 km above mean sea level.
- The **Monsoon trough** at mean sea level now passes through Sri Ganganagar, Rohtak, Bareilly, Gorakhpur, Purnea and thence east-southeastwards towards Tripura.
- The **Western Disturbance** as cyclonic circulation over Punjab & neighbourhood at 5.8 km above mean sea level persists.
- An **upper air cyclonic circulation** lies over north Bangladesh & neighbourhood and extends upto 1.5 km above mean sea level.
- The **upper air cyclonic circulation** over northeast Assam at 0.9 km above mean sea level persists.
- The **trough** from Telangana to Eastcentral Arabian sea off Karnataka coast between 1.5 & 3.1 km above mean sea level persists.
- The **trough** in westerlies roughly along Long. 88°E to the north of Lat. 21°N at 1.5 km above mean sea level has become less marked.
- The **upper air cyclonic circulation** over west Assam & neighbourhood at 3.1 km above mean sea level has become less marked.
- The **upper air cyclonic circulation** over Gangetic West Bengal & adjoining Bangladesh between 4.5 & 5.8 km above mean sea level has become less marked.



\*Red color warning does not mean "Red Alert" Red color warning means "Take Action"  
 Forecast and warning for any day is valid from 0830 hours IST of day till 0830 hours IST of next day  
 For more details kindly visit <https://mausam.imd.gov.in> or contact 011-2434-4599  
 (Service to the nation since 1875)

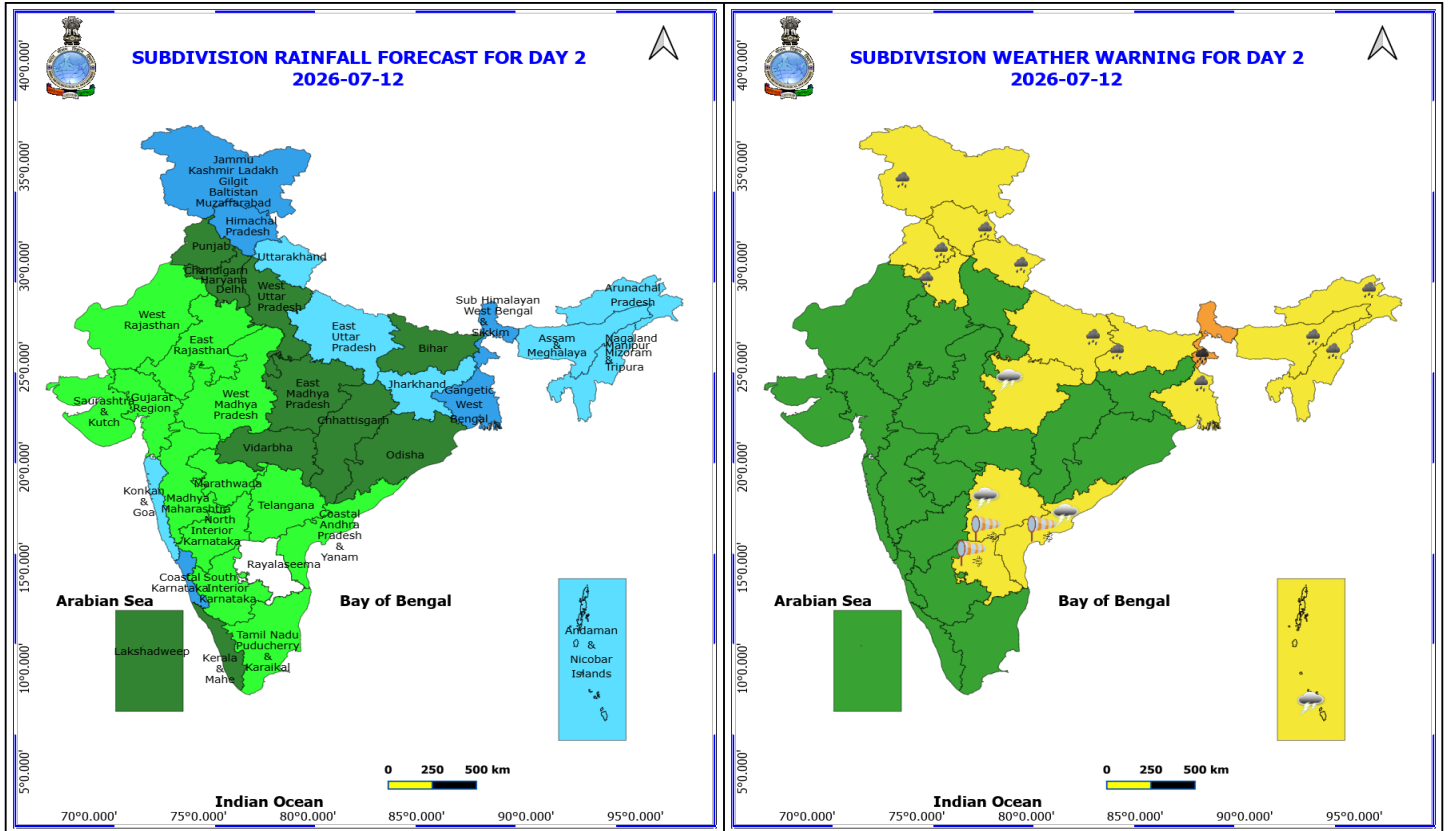


**11 July (Day 1)**

- ❖ **Heavy to Very Heavy Rainfall** very likely at isolated places over Assam & Meghalaya, Bihar, East Uttar Pradesh, Nagaland, Manipur, Mizoram and Tripura and Sub Himalayan West Bengal & Sikkim.
  - ❖ **Heavy Rainfall** very likely at isolated places over Arunachal Pradesh, Gangetic West Bengal, Haryana, Chandigarh & Delhi, Himachal Pradesh, Jammu-Kashmir-Ladakh-Gilgit-Baltistan-Muzaffarabad, Punjab, Uttarakhand and West Uttar Pradesh.
  - ❖ **Thunderstorm accompanied with lightning & gusty winds(40-50kmph)** very likely at isolated places over Andaman & Nicobar Islands, Andhra Pradesh, East Madhya Pradesh and Telangana.
  - ❖ **Thunderstorm accompanied with lightning & gusty winds(30-40kmph)** very likely at isolated places over Bihar, Karnataka, Odisha, Tamil Nadu Puducherry & Karaikal, West Bengal & Sikkim and West Madhya Pradesh.
  - ❖ **Thunderstorm accompanied with Lightning** very likely at isolated places over Arunachal Pradesh, Assam & Meghalaya, Chhattisgarh, Jharkhand and Nagaland, Manipur, Mizoram and Tripura.
  - ❖ **Strong Surface Winds** very likely at isolated places over Andhra Pradesh, Karnataka and Telangana.
- 
- ❖ **Arabian Sea:** Squally wind with speed 45-55 kmph gusting to 65 kmph is likely to prevail over some parts of central adjoining north Arabian Sea; Somalia & Oman coasts and adjoining sea areas.
  - ❖ Squally weather with wind speed 40-50 gusting to 60 kmph is likely to prevail along & off Karnataka, Kerala coasts, Lakshadweep area and adjoining eastcentral & northeast Arabian Sea.
  - ❖ **Bay of Bengal:** Squally Weather with wind speed 40-50 kmph gusting to 60 kmph is likely to prevail along and off Gangetic West Bengal coasts, south Andhra Pradesh coasts adjoining west central Bay of Bengal.

**\*Red color warning does not mean "Red Alert" Red color warning means "Take Action"**  
 Forecast and warning for any day is valid from 0830 hours IST of day till 0830 hours IST of next day  
 For more details kindly visit <https://mausam.imd.gov.in> or contact 011-2434-4599

(Service to the nation since 1875)

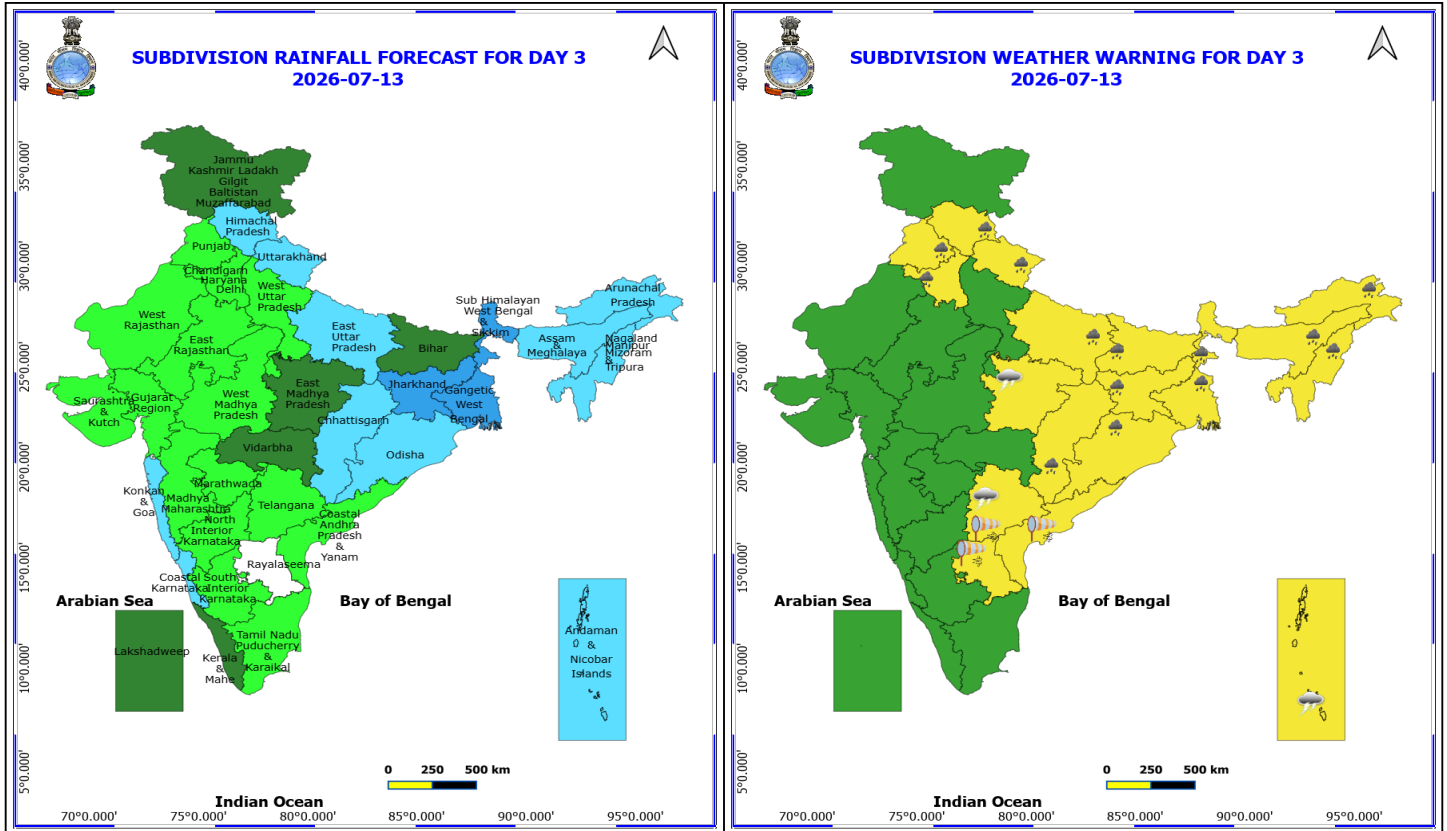


**12 July (Day 2)**

- ❖ **Heavy to Very Heavy Rainfall** very likely at isolated places over Sub Himalayan West Bengal & Sikkim.
  - ❖ **Heavy Rainfall** very likely at isolated places over Arunachal Pradesh, Assam & Meghalaya, Bihar, East Uttar Pradesh, Gangetic West Bengal, Haryana, Chandigarh & Delhi, Himachal Pradesh, Jammu-Kashmir-Ladakh-Gilgit-Baltistan-Muzaffarabad, Nagaland, Manipur, Mizoram and Tripura, Punjab and Uttarakhand.
  - ❖ **Thunderstorm accompanied with lightning & gusty winds(40-50kmph)** very likely at isolated places over Andaman & Nicobar Islands, Coastal Andhra Pradesh, East Madhya Pradesh and Telangana.
  - ❖ **Thunderstorm accompanied with lightning & gusty winds(30-40kmph)** very likely at isolated places over Bihar, Odisha, Rayalaseema, Tamil Nadu Puducherry & Karaikal, Vidarbha, West Bengal & Sikkim and West Madhya Pradesh.
  - ❖ **Thunderstorm accompanied with Lightning** very likely at isolated places over Arunachal Pradesh, Assam & Meghalaya, Chhattisgarh, Jharkhand and Nagaland, Manipur, Mizoram and Tripura.
  - ❖ **Strong Surface Winds** very likely at isolated places over Andhra Pradesh and Telangana.
- ❖ **Arabian Sea:** Squally wind with speed 45-55 kmph gusting to 65 kmph is likely to prevail over some parts of central adjoining north Arabian Sea, along and off few parts of north Gujarat coasts adjoining northeast Arabian Sea, Somalia adjoining southwest Arabian sea & Oman coasts.

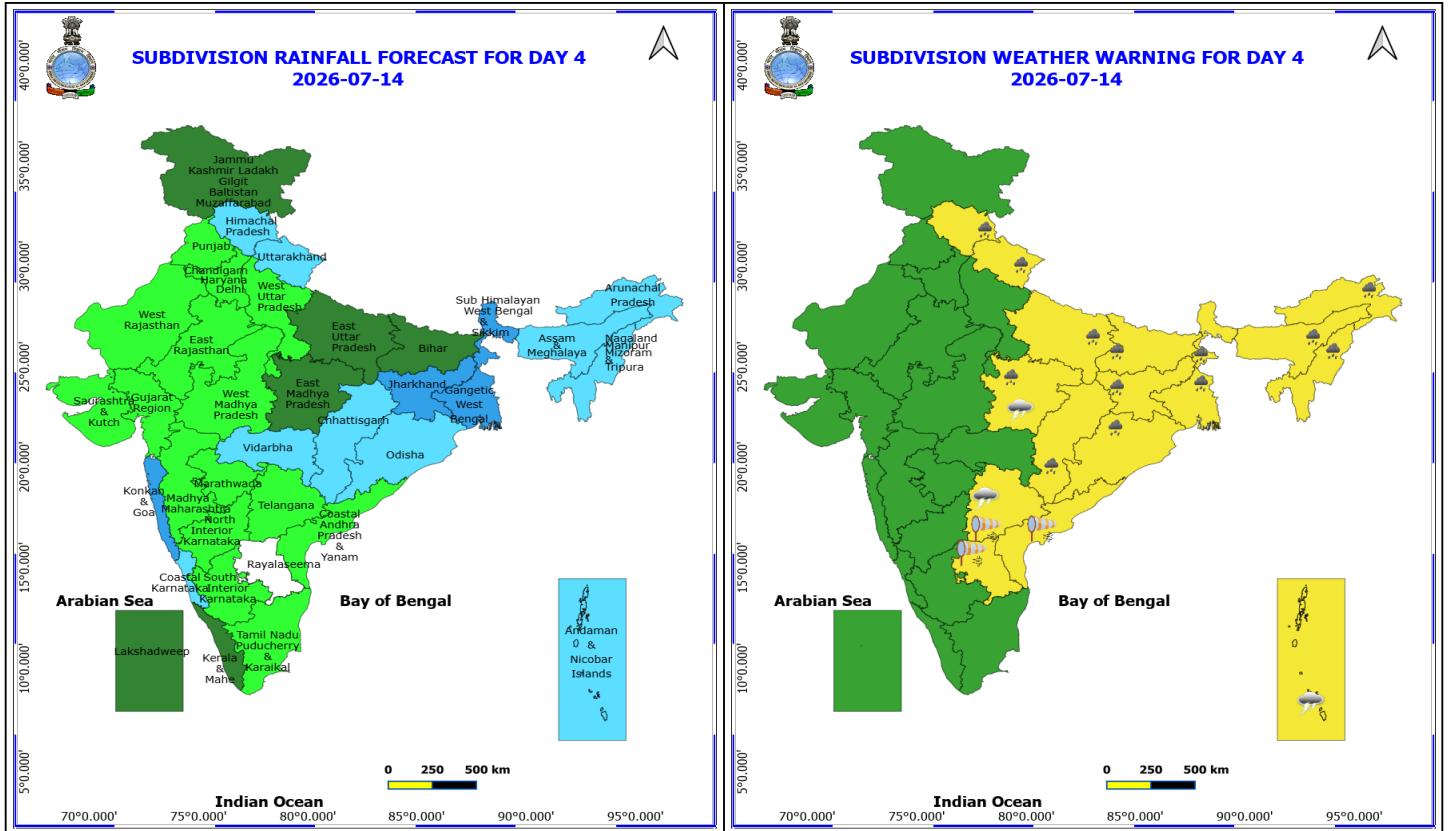
**\*Red color warning does not mean "Red Alert" Red color warning means "Take Action"**  
Forecast and warning for any day is valid from 0830 hours IST of day till 0830 hours IST of next day  
For more details kindly visit <https://mausam.imd.gov.in> or contact 011-2434-4599

(Service to the nation since 1875)



**13 July (Day 3)**

- ❖ **Heavy Rainfall** very likely at isolated places over Arunachal Pradesh, Assam & Meghalaya, Bihar, Chhattisgarh, East Uttar Pradesh, Haryana, Chandigarh & Delhi, Himachal Pradesh, Jharkhand, Nagaland, Manipur, Mizoram and Tripura, Odisha, Punjab, Uttarakhand and West Bengal & Sikkim.
  - ❖ **Thunderstorm accompanied with lightning & gusty winds(40-50kmph)** very likely at isolated places over Andaman & Nicobar Islands, East Madhya Pradesh and Telangana.
  - ❖ **Thunderstorm accompanied with lightning & gusty winds(30-40kmph)** very likely at isolated places over Andhra Pradesh, Bihar, Odisha, Tamil Nadu Puducherry & Karaikal, Vidarbha, West Bengal & Sikkim and West Madhya Pradesh.
  - ❖ **Thunderstorm accompanied with Lightning** very likely at isolated places over Arunachal Pradesh, Assam & Meghalaya, Chhattisgarh, Jharkhand and Nagaland, Manipur, Mizoram and Tripura.
  - ❖ **Strong Surface Winds** very likely at isolated places over Andhra Pradesh and Telangana.
- 
- ❖ **Arabian Sea:** Squally wind with speed 45-55 kmph gusting to 65 kmph is likely to prevail over some parts of central adjoining north Arabian Sea, along and off few parts of north Gujarat coasts adjoining northeast Arabian Sea, Somalia adjoining southwest Arabian sea & Oman coasts.
  - ❖ **Bay of Bengal:** Squally wind with speed 45-55 kmph gusting to 65 kmph is likely to prevail over some parts of Andaman Sea. Squally Weather with wind speed 40-50 kmph gusting to 60 kmph is likely to prevail over Andaman Sea.

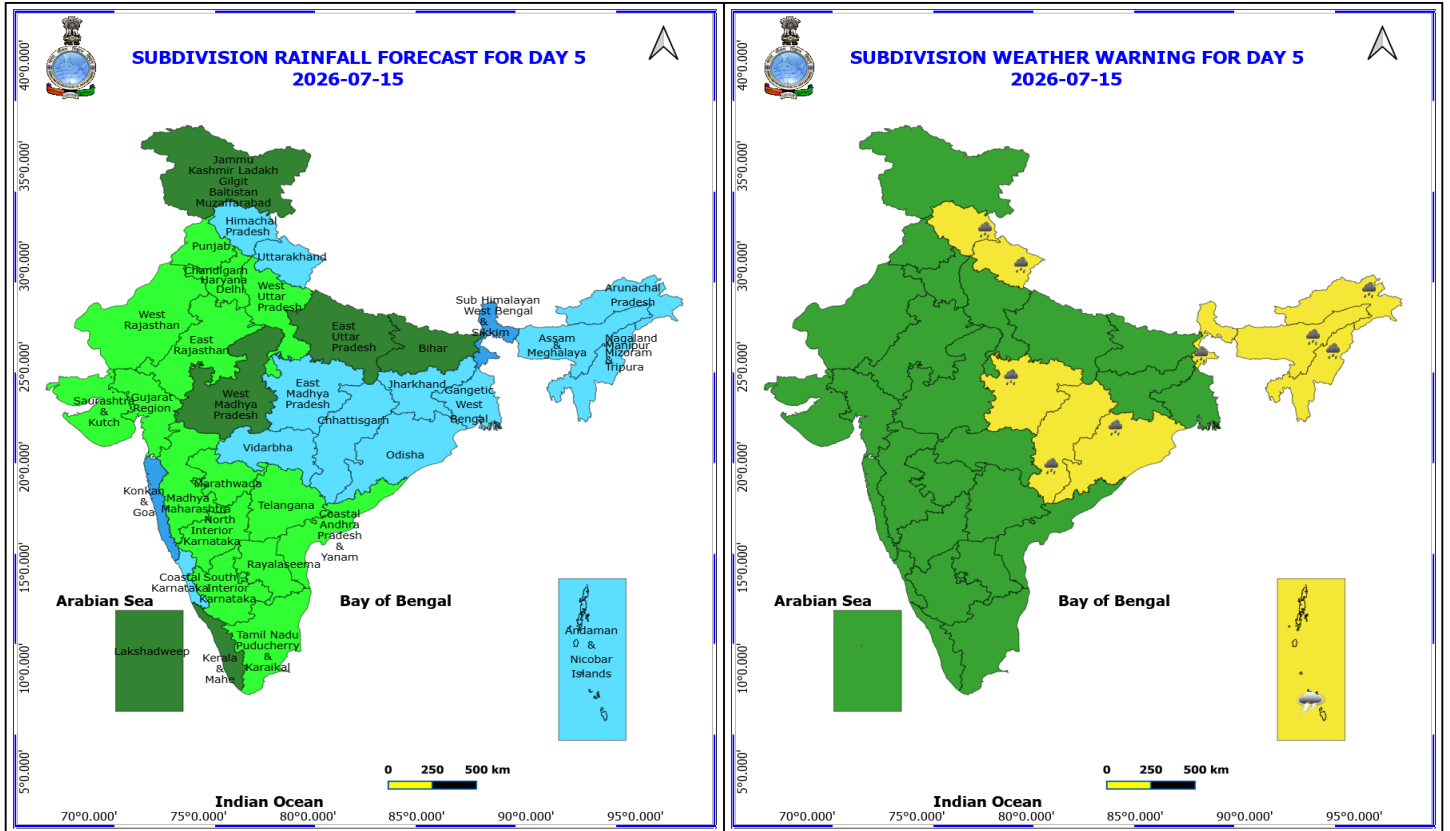


**14 July (Day 4)**

- ❖ **Heavy Rainfall** likely at isolated places over Arunachal Pradesh, Assam & Meghalaya, Bihar, Chhattisgarh, East Madhya Pradesh, East Uttar Pradesh, Himachal Pradesh, Jharkhand, Nagaland, Manipur, Mizoram and Tripura, Odisha, Uttarakhand and West Bengal & Sikkim.
  - ❖ **Thunderstorm accompanied with lightning & gusty winds(40-50kmph)** likely at isolated places over Andaman & Nicobar Islands, East Madhya Pradesh and Telangana.
  - ❖ **Thunderstorm accompanied with lightning & gusty winds(30-40kmph)** likely at isolated places over Andhra Pradesh, Bihar, Odisha, Tamil Nadu Puducherry & Karaikal, Vidarbha, West Bengal & Sikkim and West Madhya Pradesh.
  - ❖ **Thunderstorm accompanied with Lightning** likely at isolated places over Arunachal Pradesh, Assam & Meghalaya, Chhattisgarh, Jharkhand and Nagaland, Manipur, Mizoram and Tripura.
  - ❖ **Strong Surface Winds** likely at isolated places over Andhra Pradesh and Telangana.
- 
- ❖ **Arabian Sea:** Squally wind with speed 45-55 kmph gusting to 65 kmph is likely to prevail over some parts of central adjoining few parts of north & southwest Arabian Sea, along and off Somalia & Oman coasts and adjoining sea areas.
  - ❖ **Bay of Bengal:** Squally wind with speed 45-55 kmph gusting to 65 kmph is likely to prevail over few parts of southwest adjoining westcentral Bay of Bengal, south SriLanka coasts adjoining few parts of southwest & southeast Bay of Bengal. Squally Weather with wind speed 40-50 kmph gusting to 60 kmph is likely to prevail over Andaman sea.

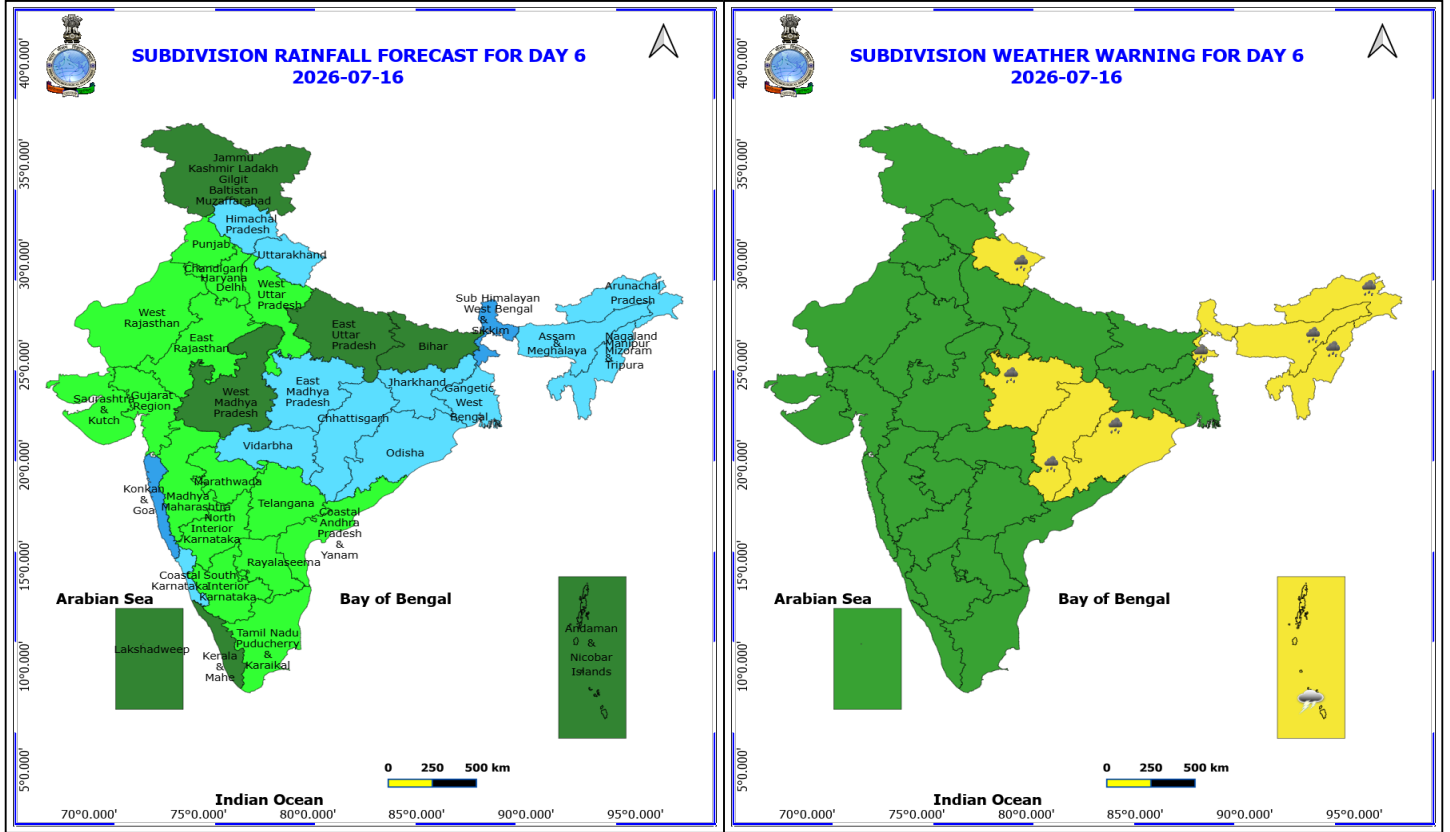
**\*Red color warning does not mean "Red Alert" Red color warning means "Take Action"**  
 Forecast and warning for any day is valid from 0830 hours IST of day till 0830 hours IST of next day  
 For more details kindly visit <https://mausam.imd.gov.in> or contact 011-2434-4599

(Service to the nation since 1875)



### 15 July (Day 5)

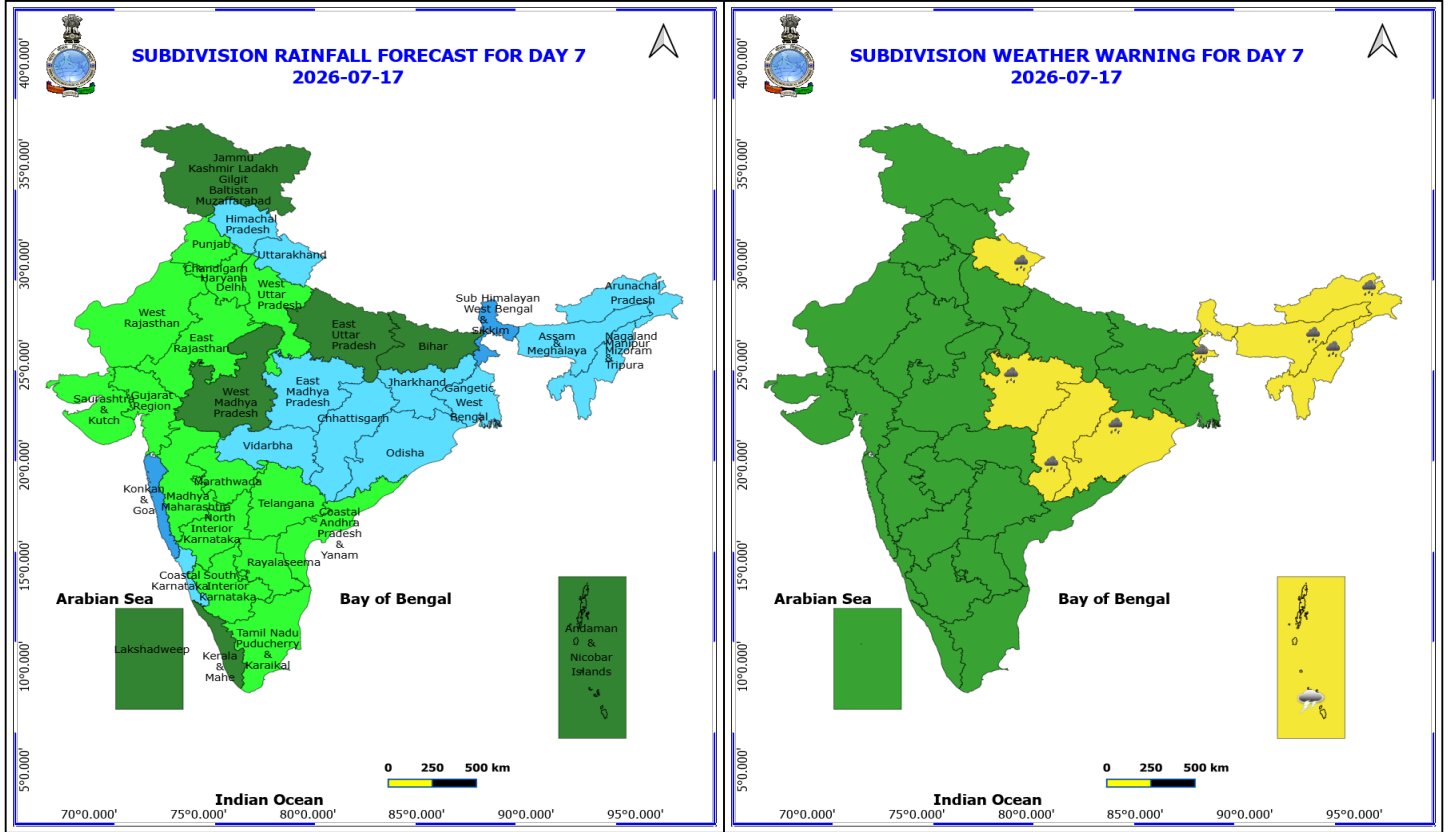
- ❖ **Heavy Rainfall** likely at isolated places over Arunachal Pradesh, Assam & Meghalaya, Chhattisgarh, East Madhya Pradesh, Himachal Pradesh, Nagaland, Manipur, Mizoram and Tripura, Odisha, Sub Himalayan West Bengal & Sikkim and Uttarakhand.
  - ❖ **Thunderstorm accompanied with lightning & gusty winds(40-50kmph)** likely at isolated places over Andaman & Nicobar Islands.
  - ❖ **Thunderstorm accompanied with lightning & gusty winds(30-40kmph)** likely at isolated places over Bihar, Odisha, Sub Himalayan West Bengal & Sikkim and Tamil Nadu Puducherry & Karaikal.
- 
- ❖ **Arabian Sea:** Arabian Sea: Squally wind with speed 45-55 kmph gusting to 65 kmph is likely to prevail over some parts of central adjoining few parts of north & southwest Arabian Sea, along and off Somalia & Oman coasts and adjoining sea areas.
  - ❖ **Bay of Bengal:** Squally wind with speed 45-55 kmph gusting to 65 kmph is likely to prevail over few parts of south adjoining westcentral Bay of Bengal.
  - ❖ Squally Weather with wind speed 40-50 kmph gusting to 60 kmph is likely to prevail over Andaman Sea.



**16 July (Day 6)**

- ❖ **Heavy Rainfall** likely at isolated places over Arunachal Pradesh, Assam & Meghalaya, Chhattisgarh, East Madhya Pradesh, Nagaland, Manipur, Mizoram and Tripura, Odisha, Sub Himalayan West Bengal & Sikkim and Uttarakhand.
- ❖ **Thunderstorm accompanied with lightning & gusty winds(40-50kmph)** likely at isolated places over Andaman & Nicobar Islands.
- ❖ **Thunderstorm accompanied with lightning & gusty winds(30-40kmph)** likely at isolated places over Bihar, Odisha, Sub Himalayan West Bengal & Sikkim and Tamil Nadu Puducherry & Karaikal.

**No Fishermen Warning**



**17 July (Day 7)**

- ❖ **Heavy Rainfall** likely at isolated places over Arunachal Pradesh, Assam & Meghalaya, Chhattisgarh, East Madhya Pradesh, Nagaland, Manipur, Mizoram and Tripura, Odisha, Sub Himalayan West Bengal & Sikkim and Uttarakhand.
- ❖ **Thunderstorm accompanied with lightning & gusty winds(40-50kmph)** likely at isolated places over Andaman & Nicobar Islands.
- ❖ **Thunderstorm accompanied with lightning & gusty winds(30-40kmph)** likely at isolated places over Bihar, Odisha, Sub Himalayan West Bengal & Sikkim and Tamil Nadu Puducherry & Karaikal.

**No Fishermen Warning**

**\*Red color warning does not mean "Red Alert" Red color warning means "Take Action"**  
Forecast and warning for any day is valid from 0830 hours IST of day till 0830 hours IST of next day  
For more details kindly visit <https://mausam.imd.gov.in> or contact 011-2434-4599

(Service to the nation since 1875)

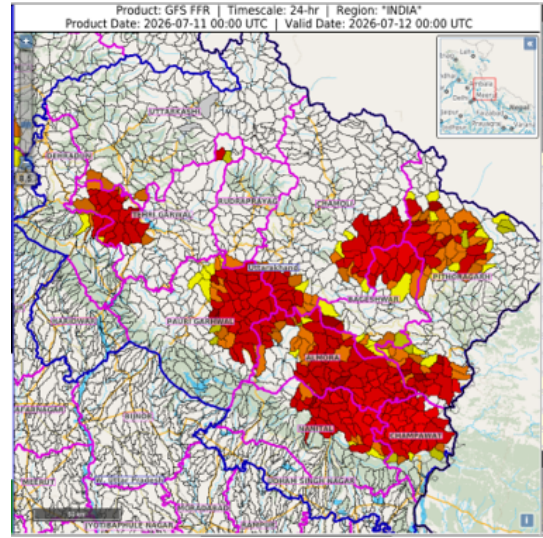
## Flash Flood Warnings

**24 hours Outlook for the Flash Flood Risk (FFR) till 0530 IST of 12-07-2026 :**

**Low to Moderate flash flood risk** likely over few watersheds & neighbourhoods of following Met Sub-divisions during next 24 hours.

**Uttarakhand** - Almora, Bageshwar, Chamoli, Champawat, Dehradun, Nanital, Pauri Garhwal, Pithoragarh, Tehri Garwal and Uttarakashi districts.

Surface runoff/ Inundation may occur at some fully saturated soils & low-lying areas over Area of Concern (AoC) as shown in map due to expected rainfall occurrence in next 24 hours.





## Table-1

### 7 Days Rainfall Forecast

S.No.	Subdivision	11- Jul	12- Jul	13- Jul	14- Jul	15- Jul	16- Jul	17- Jul
		Day 1	Day 2	Day 3	Day 4	Day 5	Day 6	Day 7
1	ANDAMAN & NICOBAR ISLANDS	FWS	FWS	FWS	FWS	FWS	SCT	SCT
2	ARUNACHAL PRADESH	FWS	FWS	FWS	FWS	FWS	FWS	FWS
3	ASSAM & MEHGHALAYA	FWS	FWS	FWS	FWS	FWS	FWS	FWS
4	N. M. M. & T.	WS	FWS	FWS	FWS	FWS	FWS	FWS
5	S.H. WEST BENGAL & SIKKIM	WS	WS	WS	WS	WS	WS	WS
6	GANGETIC WEST BENGAL	WS	WS	WS	WS	FWS	FWS	FWS
7	ODISHA	SCT	SCT	FWS	FWS	FWS	FWS	FWS
8	JHARKHAND	SCT	FWS	WS	WS	FWS	FWS	FWS
9	BIHAR	FWS	SCT	SCT	SCT	SCT	SCT	SCT
10	EAST UTTAR PRADESH	WS	FWS	FWS	SCT	SCT	SCT	SCT
11	WEST UTTAR PRADESH	SCT	SCT	ISOL	ISOL	ISOL	ISOL	ISOL
12	UTTARAKHAND	WS	FWS	FWS	FWS	FWS	FWS	FWS
13	HARYANA, CHD & DELHI	SCT	SCT	ISOL	ISOL	ISOL	ISOL	ISOL
14	PUNJAB	SCT	SCT	ISOL	ISOL	ISOL	ISOL	ISOL
15	HIMACHAL PRADESH	WS	WS	FWS	FWS	FWS	FWS	FWS
16	JAMMU AND KASHMIR AND LADAKH	WS	WS	SCT	SCT	SCT	SCT	SCT
17	WEST RAJASTHAN	ISOL	ISOL	ISOL	ISOL	ISOL	ISOL	ISOL
18	EAST RAJASTHAN	ISOL	ISOL	ISOL	ISOL	ISOL	ISOL	ISOL
19	WEST MADHYA PRADESH	ISOL	ISOL	ISOL	ISOL	SCT	SCT	SCT
20	EAST MADHYA PRADESH	SCT	SCT	SCT	SCT	FWS	FWS	FWS
21	GUJRAT REGION	ISOL	ISOL	ISOL	ISOL	ISOL	ISOL	ISOL
22	SAURASHTRA & KUTCH	ISOL	ISOL	ISOL	ISOL	ISOL	ISOL	ISOL
23	KONKAN & GOA	FWS	FWS	FWS	WS	WS	WS	WS
24	MADHYA MAHARASHTRA	ISOL	ISOL	ISOL	ISOL	ISOL	ISOL	ISOL
25	MARATHWADA	ISOL	ISOL	ISOL	ISOL	ISOL	ISOL	ISOL
26	VIDARBHA	SCT	SCT	SCT	FWS	FWS	FWS	FWS
27	CHATTISGARH	SCT	SCT	FWS	FWS	FWS	FWS	FWS
28	COASTAL ANDHRA PRADESH	ISOL	ISOL	ISOL	ISOL	ISOL	ISOL	ISOL
29	TELANGANA	ISOL	ISOL	ISOL	ISOL	ISOL	ISOL	ISOL
30	RAYALASEEMA	ISOL	DRY	DRY	DRY	ISOL	ISOL	ISOL
31	TAMILNADU & PUDUCHERRY	ISOL	ISOL	ISOL	ISOL	ISOL	ISOL	ISOL
32	COSTAL KARNATAKA	WS	WS	FWS	FWS	FWS	FWS	FWS
33	NORTH INTERIOR KARNATAKA	ISOL	ISOL	ISOL	ISOL	ISOL	ISOL	ISOL
34	SOUTH INTERIOR KARNATAKA	ISOL	ISOL	ISOL	ISOL	ISOL	ISOL	ISOL
35	KERALA	FWS	SCT	SCT	SCT	SCT	SCT	SCT
36	LAKSHDWEEP	SCT	SCT	SCT	SCT	SCT	SCT	SCT

Legend	Category	%Stations
WS	Widespread/Most Places	76-100
FWS	Fairly Widespread/Many Places	51-75
SCT	Scattered/ A Few Places	26-50
ISOL	Isolated Places	1-25
DRY	No Rain	0

\*Red color warning does not mean "Red Alert" Red color warning means "Take Action"  
Forecast and warning for any day is valid from 0830 hours IST of day till 0830 hours IST of next day  
For more details kindly visit <https://mausam.imd.gov.in> or contact 011-2434-4599

(Service to the nation since 1875)

Fig. 1: Maximum Temperatures Dated 2026-07-10

Fig. 2: Departure of Maximum Temp. Dated 2026-07-10

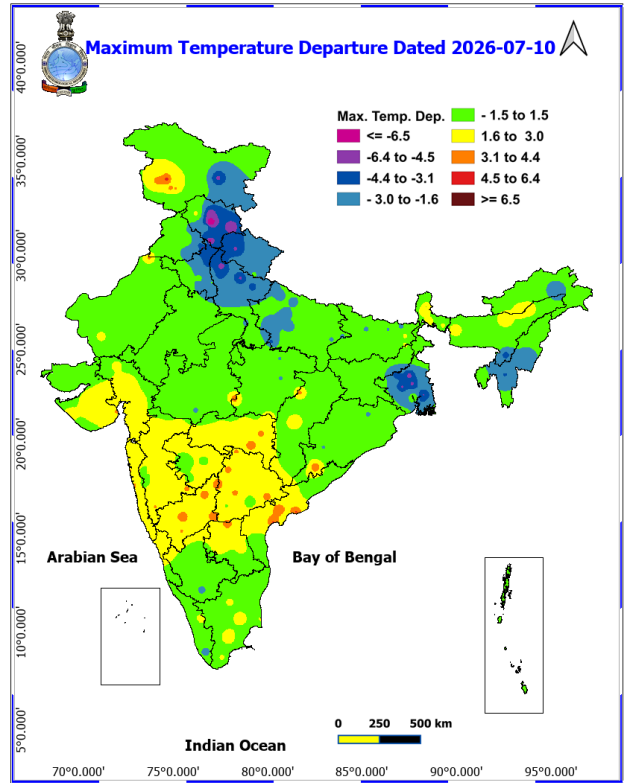
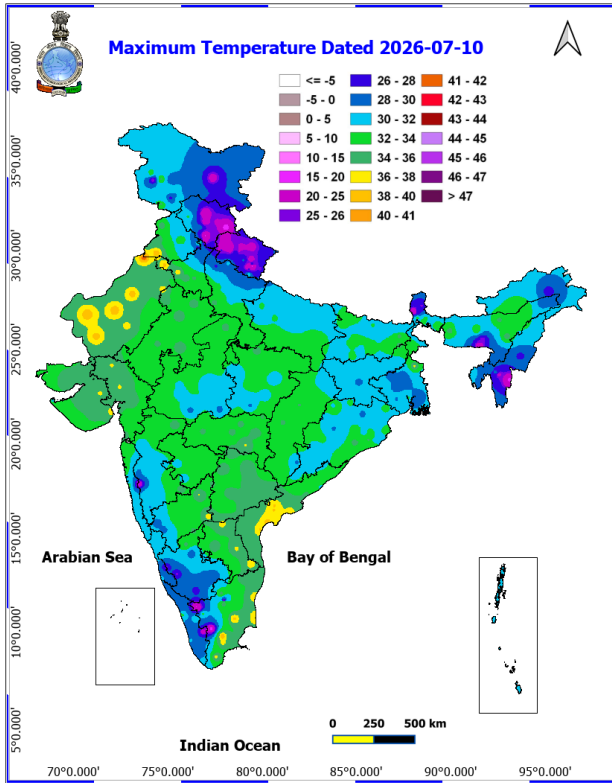
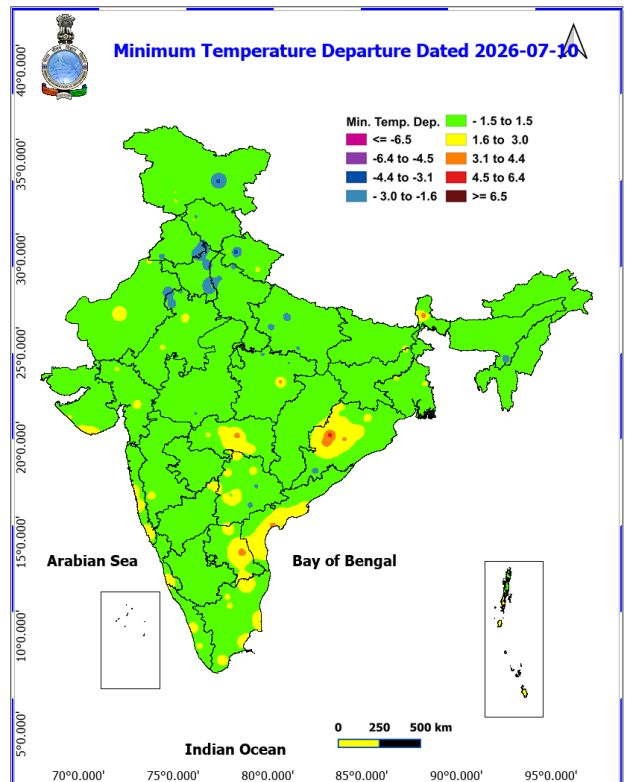
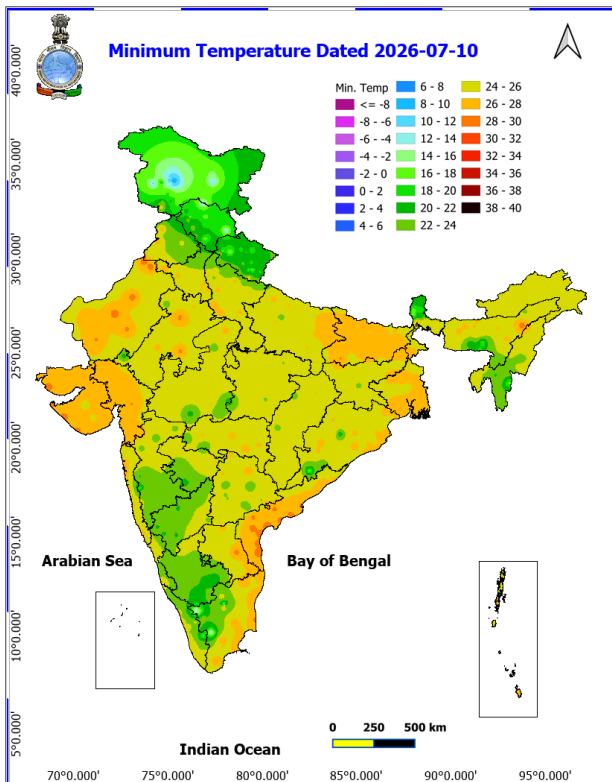
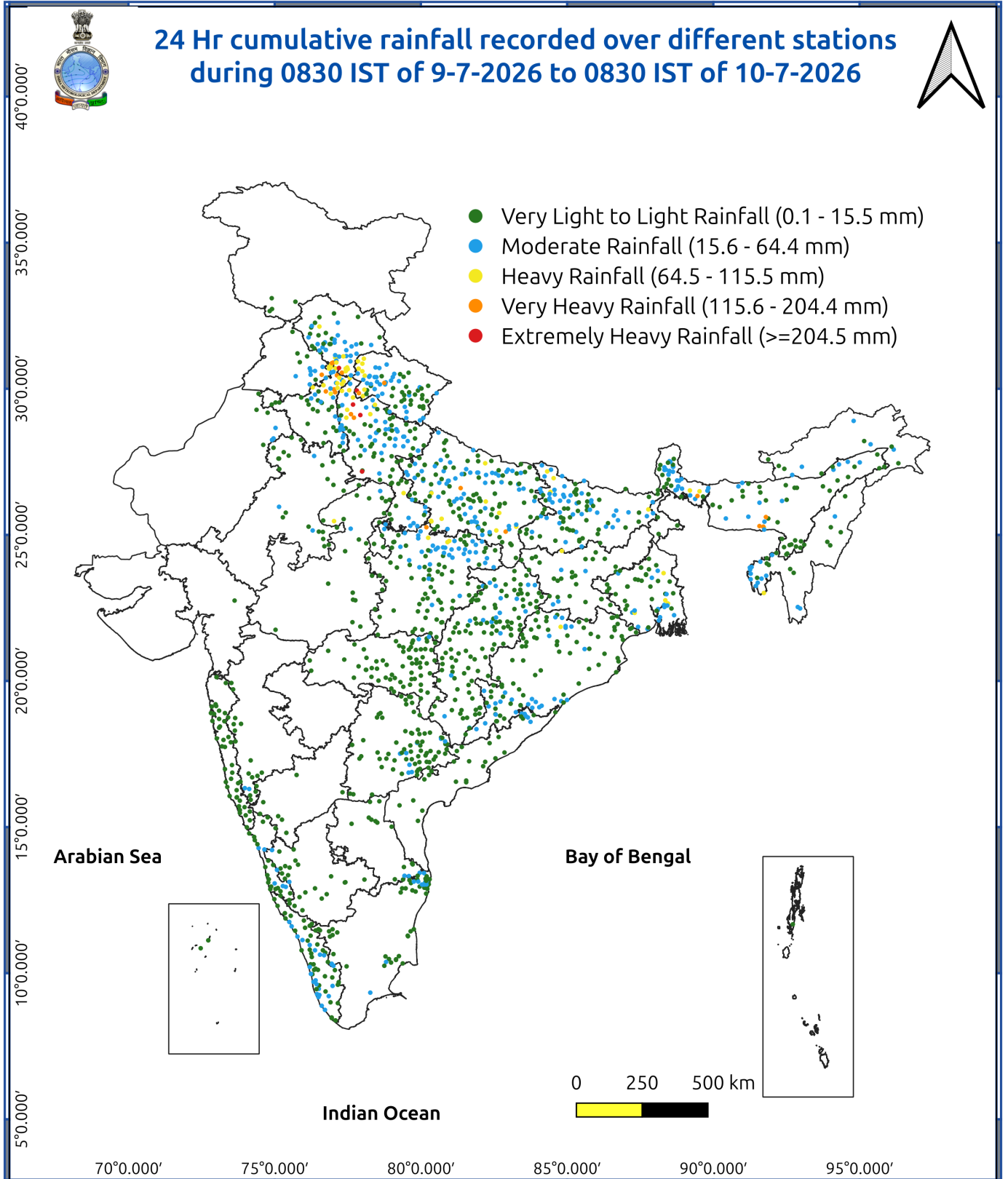


Fig. 3: Minimum Temperatures Dated 2026-07-10

Fig. 4: Departure of Minimum Temp. Dated 2026-07-10





## Impact and Actions

### Impact Expected & Action Suggested due to heavy/very heavy rainfall over

- **Isolated very heavy rainfall** over East Uttar Pradesh, Bihar, Assam & Meghalaya and Nagaland, Manipur, Mizoram & Tripura on 11<sup>th</sup>; Sub-Himalayan West Bengal & Sikkim during 11th-12th July.

### Impact Expected

- Localized Flooding of roads, water logging in low lying areas and closure of underpasses mainly in urban areas.
- Occasional reduction in visibility due to heavy rainfall.
- Disruption of traffic in major cities due to water logging in roads leading to increased travel time.
- Minor damage to kutcha roads.
- Possibilities of damage to vulnerable structure.
- Localized Landslides/Mudslides/landslips/mudslips/landsinks/mudsinks.
- Damage to horticulture and standing crops in some areas due to inundation.
- It may lead to riverine flooding in some river catchments (for riverine flooding please visit Web page of CWC)

### Action Suggested

- Check for traffic congestion on your route before leaving for your destination.
- Follow any traffic advisories that are issued in this regard.
- Avoid going to areas that face the water logging problems often.
- Avoid staying in vulnerable structure.

## Agromet advisories for various parts of the country

### Agromet advisories for likely impact of Heavy Rainfall

- In **Himachal Pradesh**, drain out excess water from fields of maize, finger millet and vegetables to prevent waterlogging. Delay sowing of rajma until the weather becomes clear.
- In **Uttarakhand**, avoid sowing of maize, rajma, black gram and soybean during spells of heavy rains. Drain out excess rain water from fields of rice, maize, tomato, chilli, barnyard millet and finger millet.
- In **Punjab**, make arrangements for removal of excess water from cotton and maize fields.
- In **Haryana**, drain out the standing water from cotton fields immediate after excess rain.
- In **West Uttar Pradesh**, avoid sowing of green gram, black gram, sorghum, groundnut and sesame during spells of heavy rains. Make proper arrangements for drainage of excess rain water from rice nursery and fields of maize and vegetables.
- In **East Uttar Pradesh**, ensure proper drainage in rice nursery and fields of pigeon pea, maize, sesame and vegetables.
- In **Arunachal Pradesh**, maintain drainage channels in fields of rice, maize, soybean, finger millet and vegetables.
- In **Assam**, make provision for draining out excess water from rice nurseries, soybean, jute, ginger, turmeric, vegetables, banana, citrus and papaya. Provide mechanical support to the sugarcane crop to prevent lodging.
- In **Meghalaya**, ensure proper drainage channels in rice nurseries, maize, ginger, cowpea, vegetable fields and banana plantations. Protect young seedlings from direct exposure to heavy rainfall. Use propping (bamboo or wooden poles) to support heavily laden plants.
- In **Nagaland**, maintain proper drainage in fields of maize and vegetables and fruit orchards.
- In **Manipur**, ensure proper drainage in soybean, black gram, chilli, ginger, turmeric, banana and other crop fields and newly transplanted seedlings and nursery crops to avoid water stagnation.
- In **Tripura**, ensure adequate drainage arrangements to remove excess water from rice and vegetable fields during heavy rainfall.
- In **Sub Himalayan West Bengal**, protect rice nursery beds with straw mulch, dry grass, or temporary polythene / agro-net covers to prevent seed washing, poor germination and seedling loss. Drain out excess water from

\*Red color warning does not mean "Red Alert" Red color warning means "Take Action"

Forecast and warning for any day is valid from 0830 hours IST of day till 0830 hours IST of next day

For more details kindly visit <https://mausam.imd.gov.in> or contact 011-2434-4599

(Service to the nation since 1875)

- jute, ginger, chilli, tomato and dalley khorsani fields and nurseries of *kharif* rice, finger millet and vegetables.
- In **Gangetic West Bengal**, harvest mature sesame pods promptly and keep the harvested produce in safer place. Arrange proper drainage in vegetables, ginger and turmeric fields and betel vine gardens to avoid waterlogging.
  - In **Bihar**, harvest the mature pods of summer green gram and keep harvested produce in safer places. Provide adequate drainage facilities in rice nurseries and maize fields.
  - In **Keralam**, provide adequate drainage facilities in banana, coconut, cardamom, ginger, black pepper and vegetables. Provide staking support in banana plants and strengthen the pandals of vegetable crops. Avoid transplanting of rice during heavy rain.
  - In **Coastal Karnataka**, ensure proper drainage in rice seedbeds, rice fields and fruit orchards to prevent water stagnation.
  - In **South Interior Karnataka**, provide proper drainage in rice nursery; fields of maize and ginger and plantations of arecanut and coconut.

#### Agromet advisories for likely impact of Thunderstorm / Gusty Winds

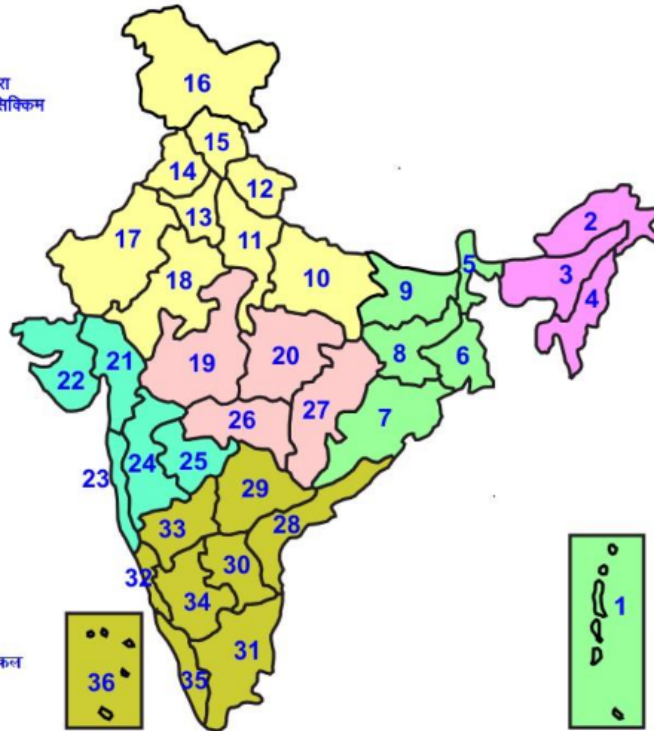
- Shift the harvested produce in safer places or cover the produce with tarpaulin sheets in the fields. Tie the harvested crops securely and cover them to minimize the risk of displacement from strong surface winds.
- Provide mechanical support to horticultural crops and staking or support to vegetables and young fruit plants / fruit-bearing plants to avoid lodging due to strong winds.

#### Livestock / Poultry / Fisheries

- Keep the animals inside the shed during heavy rainfall and provide them balanced feed.
- Store the feed and fodder in a safe place to prevent spoilage.
- In regions with high temperatures and heat wave conditions, provide clean, cool drinking water to animals, and cover the roofs of poultry sheds with grass to reduce the adverse effects of heat.
- Construct an outlet with proper netting around the ponds to drain excess water, thereby preventing fish from escaping in the event of overflow.

## LEGENDS

- 1 अंडमान और निकोबार द्वीप समुह
- 2 अरुणाचल प्रदेश
- 3 असम और मेघालय
- 4 नागालैंड मनीपुर मीजोरम और त्रिपुरा
- 5 उप हिमालय पश्चिम बंगाल एवं सिक्किम
- 6 पश्चिम बंगाल
- 7 ओडिसा
- 8 झारखंड
- 9 बिहार
- 10 पूर्वी उत्तर प्रदेश
- 11 पश्चिम उत्तर प्रदेश
- 12 उत्तराखंड
- 13 हरियाणा चंडिगढ़ एवं दिल्ली
- 14 पंजाब
- 15 हिमाचल प्रदेश
- 16 जम्मू एवं कश्मीर एवं लद्दाख
- 17 पश्चिम राजस्थान
- 18 पूर्वी राजस्थान
- 19 पश्चिम मध्य प्रदेश
- 20 पूर्वी मध्य प्रदेश
- 21 गुजरात क्षेत्र
- 22 सौराष्ट्र एवं कच्छ
- 23 कोंकण एवं गोवा
- 24 मध्य महाराष्ट्र
- 25 मराठावाडा
- 26 विदर्भ
- 27 छत्तीसगढ़
- 28 तटीय आंध्र प्रदेश एवं यनम
- 29 तेलंगाना
- 30 रायलसीमा
- 31 तमिलनाडु, पुदुचेरी एवं कराईकल
- 32 तटिय कर्नाटक
- 33 आंतरिक उत्तरी कर्नाटक
- 34 आंतरिक दक्षिणी कर्नाटक
- 35 केरल एवं माहे
- 36 लक्षद्वीप



1. Andaman & Nicobar Islands
2. Arunachal Pradesh
3. Assam & Meghalaya
4. Nagaland, Manipur, Mizoram & Tripura
5. Sub-Himalayan West Bengal & Sikkim
6. Gangetic West Bengal
7. Orissa
8. Jharkhand
9. Bihar
10. East Uttar Pradesh
11. West Uttar Pradesh
12. Uttarakhand
13. Haryana, Chd & Delhi
14. Punjab
15. Himachal Pradesh
16. Jammu & Kashmir and Ladakh
17. West Rajasthan
18. East Rajasthan
19. West Madhya Pradesh
20. East Madhya Pradesh
21. Gujarat
22. Saurashtra
23. Konkan & Goa
24. Madhya Maharashtra
25. Marathawada
26. Vidharbha
27. Chhattisgarh
28. Coastal Andhra Pradesh & Yanam
29. Telangana
30. Rayalaseema
31. Tamilnadu, Puducherry & Karaikal
32. Coastal Karnataka
33. North Interior Karnataka
34. South Interior Karnataka
35. Kerala & Mahe
36. Lakshadweep

## SPATIAL DISTRIBUTION (% of Stations reporting)

% Stations	Category	% Stations	Category
76-100	Widespread (WS/ Most Places)	26-50	Scattered (SCT/ A Few Places)
51-75	Fairly Widespread (FWS/ Many Places)	1-25	Isolated (ISOL)

### Subdivision Colour

- NO WARNING
- WATCH (BE UPDATED)
- ALERT (BE PREPARED TO TAKE ACTION)
- WARNING (TAKE ACTION)

### Probabilistic Forecast

Terms	Probability of Occurrence (%)
Unlikely	< 25
Likely	25 - 50
Very Likely	50 - 75
Most Likely	> 75

- |                          |                 |                      |                    |
|--------------------------|-----------------|----------------------|--------------------|
| Heavy Rain               | Very Heavy Rain | Extremely Heavy Rain | Heavy Snow         |
| Thunderstorm & Lightning | Hailstorm       | Dust Storm           | Dust Raising Winds |
| Strong surface winds     | Heat Wave       | Hot Day              | Warm Night         |
| Cold Wave                | Cold Day        | Ground Frost         | Fog                |
| Hot & Humid              |                 |                      |                    |

\*Red color warning does not mean "Red Alert" Red color warning means "Take Action"

Forecast and warning for any day is valid from 0830 hours IST of day till 0830 hours IST of next day

For more details kindly visit <https://mausam.imd.gov.in> or contact 011-2434-4599

(Service to the nation since 1875)

## LEGENDS

### WARNING

WARNING (TAKE ACTION)
ALERT ( BE PREPARED)
WATCH (BE UPDATED)
NO WARNING ( NO ACTION)

### Probabilistic Forecast

Terms	Probability of Occurrence (%)
Unlikely	< 25
Likely	25 - 50
Very Likely	50 - 75
Most Likely	> 75



Heavy: 64.5 to 115.5 mm/cm \*  
Very Heavy: 115.6 to 204.4 mm/cm\*  
Extremely Heavy: > 204.4 mm/cm \*



When maximum temperature of a station reaches  $\geq 40^{\circ}\text{C}$  for plains and  $\geq 30^{\circ}\text{C}$  for hilly regions  
(a) Based on Departure from normal

Heat Wave: Maximum Temperature Departure from normal  $4.5^{\circ}\text{C}$  to  $6.4^{\circ}\text{C}$ .  
Severe Heat Wave: Maximum Temperature Departure from normal  $\geq 6.5^{\circ}\text{C}$

(b). Based on Actual maximum temperature

Heat Wave: When actual maximum temperature  $\geq 45^{\circ}\text{C}$ .  
Severe Heat Wave: When actual maximum temperature  $\geq 47^{\circ}\text{C}$

(c). Criteria for heat wave for coastal stations

When maximum temperature departure is  $> 4.5^{\circ}\text{C}$  from normal. Heat Wave may be described provided maximum temperature  $\geq 37^{\circ}\text{C}$



When maximum temperature remains  $40^{\circ}\text{C}$

Warm Night: When minimum temperature departure  $4.5^{\circ}\text{C}$  to  $6.4^{\circ}\text{C}$ .  
Severe Warm Night: When minimum temperature departure  $> 6.4^{\circ}\text{C}$ .



When minimum temperature of a station  $\leq 10^{\circ}\text{C}$  for plains and  $\leq 0^{\circ}\text{C}$  for hilly regions.

(a). Based on departure

Cold Wave: Minimum Temperature Departure from normal  $-4.5^{\circ}\text{C}$  to  $-6.4^{\circ}\text{C}$ .  
Severe Cold Wave: Minimum Temperature Departure from normal  $\leq -6.5^{\circ}\text{C}$

(b) Based on actual Minimum Temperature (for Plains only)

Cold Wave : When Minimum Temperature is  $\leq 4.0^{\circ}\text{C}$   
Severe Cold Wave: When Minimum Temperature is  $\leq 2.0^{\circ}\text{C}$

(c) For Coastal Stations

When Minimum Temperature departure is  $\leq -4.5^{\circ}\text{C}$  & actual Minimum Temperature is  $\leq 15^{\circ}\text{C}$



When minimum temperature of a station  $\leq 10^{\circ}\text{C}$  for plains and  $\leq 0^{\circ}\text{C}$  for hilly regions  
Based on departure

Cold Day: Maximum Temperature Departure from normal  $-4.5^{\circ}\text{C}$  to  $-6.4^{\circ}\text{C}$ .  
Severe Cold Day: Maximum Temperature Departure from normal  $\leq -6.5^{\circ}\text{C}$



Phenomenon of small droplets suspended in air and the horizontal visibility  $< 1\text{km}$

Moderate Fog: When the visibility between 500-200 metres  
Dense Fog: when the visibility between 50- 200 metres  
Very Dense Fog: when the visibility  $< 50$  metres



Sudden electrical discharges manifested by a flash of light (Lightning) and a sharp rumbling sound (thunder)



An ensemble of particles of dust or sand energetically lifted to great heights by a strong and turbulent wind.



Ice deposits on ground

Air temperature  $\leq 4^{\circ}\text{C}$  ( over Plains)



A strong wind that rises suddenly, lasts for atleast 1 minute.

Moderate: Wind speed 52-61 kmph  
Severe: Wind speed 62-87 kmph  
Very Severe: Wind speed  $> 87$  kmph



Effect of various waves in the sea over specific area

Rough to very rough: Wind speed 41-62 kmph (22-33 knots) & Wave height 2.5-6 metre  
High to very high: Wind speed 63-117 kmph ( 34-63 knots) & Wave height 6-14 metre  
Phenomenal: Wind speed  $> 117$  kmph ( $> 63$  knots) & Wave height  $> 14$  metre



Cyclonic Storm: Wind speed 62-87 kmph (34-47 knots)  
Severe Cyclonic Storm: Wind speed 88-117 kmph (48-63 knots)  
Very Severe Cyclonic Storm: Wind speed 118-165 kmph (64 - 89 knots)  
Extremely Severe Cyclonic Storm: Wind speed 166-220 kmph (90 -119 knots)  
Super Cyclone Storm: Wind speed  $> 220$  kmph ( $> 119$  knots)

\*Red color warning does not mean "Red Alert" Red color warning means "Take Action"

Forecast and warning for any day is valid from 0830 hours IST of day till 0830 hours IST of next day

For more details kindly visit <https://mausam.imd.gov.in> or contact 011-2434-4599

(Service to the nation since 1875)