

ALL INDIA WEATHER SUMMARY AND FORECAST BULLETIN

Significant Weather Features

Advance of Southwest Monsoon 2026:

- The **Northern Limit of Monsoon** continues to pass through 20°N/60°E, 20°N/65°E, 20°N/70°E, Surat, Indore, Mandla, Daltonganj, Motihari and 28.3°N/83°E on 29th June
- **Conditions are favourable** for further advance of southwest monsoon into some more parts of North Arabian Sea, Gujarat, Madhya Pradesh, remaining parts of Chhattisgarh, Jharkhand & Bihar, some parts of Uttar Pradesh & Uttarakhand during next 3-4 days.

Weather Forecast and Warnings:

Northwest India:

- **Isolated to Scattered** rainfall likely over Jammu-Kashmir-Ladakh-Gilgit-Baltistan-Muzaffarabad on 29th June; Himachal Pradesh during 29th June-1st July.
- **Isolated to Scattered** rainfall likely over Haryana Chandigarh & Delhi and Punjab on 29th June and during 1st-2nd July; West Uttar Pradesh during 29th June-1st July and during 3rd-4th July; East Uttar Pradesh during 29th-30th June and on 4th July; East Rajasthan and West Rajasthan during 29th June-4th July.
- **Fairly Widespread to Widespread** rainfall likely over Jammu-Kashmir-Ladakh-Gilgit-Baltistan-Muzaffarabad during 30th June-4th July; Himachal Pradesh during 2nd-4th July; Uttarakhand during 29th June-4th July.
- **Fairly Widespread to Widespread** rainfall likely over Haryana Chandigarh & Delhi and Punjab during 3rd-4th July; West Uttar Pradesh on 2nd July; East Uttar Pradesh during 1st-3rd July.
- **Isolated thunderstorm, lightning & gusty winds (speed reaching 40-50 kmph gusting to 60 kmph)** likely over Jammu-Kashmir-Ladakh-Gilgit-Baltistan-Muzaffarabad during 29th June-4th July, **with gusty winds (speed reaching 30-40 kmph gusting to 50 kmph)** likely over Himachal Pradesh during 30th June-4th July; Uttarakhand during 29th June-1st July.
- **Isolated thunderstorm, lightning & gusty winds (speed reaching 40-50 kmph gusting to 60 kmph)** likely over Punjab during 1st-4th July; Haryana Chandigarh & Delhi and West Rajasthan during 1st-4th July; West Uttar Pradesh during 30th June-4th July; East Rajasthan and East Uttar Pradesh during 29th June-4th July, **with gusty winds (speed reaching 30-40 kmph gusting to 50 kmph)** likely over West Rajasthan during 29th-30th June.
- **Isolated thunderstorm & lightning** likely over Himachal Pradesh on 29th June; Uttarakhand during 2nd-3rd July.
- **Isolated heavy rainfall** likely over Jammu-Kashmir-Ladakh-Gilgit-Baltistan-Muzaffarabad and Punjab during 2nd-3rd July; Himachal Pradesh during 1st-4th July; Uttarakhand during 30th June-4th July; East Uttar Pradesh during 30th June-1st July; East Rajasthan during 2nd-4th July.
- **Isolated Hailstorm** activity likely over Jammu-Kashmir-Ladakh-Gilgit-Baltistan-Muzaffarabad on 30th June.

Central India:

- **Isolated to Scattered** rainfall likely over East Madhya Pradesh and West Madhya Pradesh during 29th-30th June.
- **Fairly Widespread to Widespread** rainfall likely over East Madhya Pradesh and West Madhya Pradesh during 1st-4th July; Chhattisgarh and Vidarbha during 29th June-4th July.
- **Isolated thunderstorm, lightning & gusty winds (speed reaching 40-50 kmph gusting to 60 kmph)** likely over East Madhya Pradesh, Vidarbha and West Madhya Pradesh during 29th June-2nd July.
- **Isolated thunderstorm & lightning** likely over Chhattisgarh during 29th June-2nd July.
- **Isolated heavy rainfall** likely over West Madhya Pradesh during 29th June-1st July and on 4th July; East Madhya Pradesh during 29th-30th June and on 4th July; Vidarbha during 29th June-2nd July; Chhattisgarh during 29th June-4th July with **isolated very heavy rainfall** also likely over West Madhya Pradesh during 2nd-3rd July; East Madhya Pradesh during 1st-3rd July; Vidarbha during 3rd-4th July.
- **Moderate to intense lightning activity likely during next 2-3 days.**

*Red color warning does not mean "Red Alert" Red color warning means "Take Action"

Forecast and warning for any day is valid from 0830 hours IST of day till 0830 hours IST of next day

For more details kindly visit <https://mausam.imd.gov.in> or contact 011-2434-4599

(Service to the nation since 1875)

East India:

- **Fairly Widespread to Widespread** rainfall likely over Andaman & Nicobar Islands, Jharkhand and Sub-Himalayan West Bengal & Sikkim during 29th June-4th July; Gangetic West Bengal during 30th June-4th July; Bihar during 29th June-1st July; Odisha during 29th June-4th July.
- **Isolated to Scattered** rainfall likely over Gangetic West Bengal on 29th June; Bihar during 2nd-4th July.
- **Isolated thunderstorm, lightning & gusty winds (speed reaching 40-50 kmph gusting to 60 kmph)** likely over Andaman & Nicobar Islands, Gangetic West Bengal, Jharkhand and Odisha during 29th June-4th July; Bihar during 29th-30th June and during 3rd-4th July, **with gusty winds (speed reaching 30-40 kmph gusting to 50 kmph)** likely over Sub-Himalayan West Bengal & Sikkim during 29th June-2nd July; Bihar during 1st-2nd July.
- **Isolated heavy rainfall** likely over Sub-Himalayan West Bengal & Sikkim on 29th June and on 1st July; Gangetic West Bengal on 1st July and during 3rd-4th July; Jharkhand during 30th June-1st July; Bihar on 29th June and on 2nd July; Odisha on 29th June and during 2nd-4th July with isolated **very heavy rainfall** also likely over Sub-Himalayan West Bengal & Sikkim on 30th June; Bihar and Odisha during 30th June-1st July.
- **Heavy to very heavy rainfall at many places with extremely heavy rainfall likely at isolated places over Sub-Himalayan West Bengal & Sikkim on 29th June.**
- **Moderate to intense lightning activity likely during next 2-3 days.**

Northeast India:

- **Fairly Widespread to Widespread** rainfall likely over Arunachal Pradesh during 29th June-2nd July; Assam & Meghalaya and Nagaland, Manipur, Mizoram & Tripura during 29th June-4th July.
- **Isolated to Scattered** rainfall likely over Arunachal Pradesh during 3rd-4th July.
- **Isolated thunderstorm & lightning** likely over Arunachal Pradesh and Nagaland, Manipur, Mizoram & Tripura during 29th June-1st July; Assam & Meghalaya during 29th June-2nd July.
- **Isolated heavy rainfall** likely over Arunachal Pradesh during 30th June-2nd July; Assam & Meghalaya during 1st-3rd July; Nagaland, Manipur, Mizoram & Tripura during 29th June-1st July with isolated **very heavy rainfall** also likely over Arunachal Pradesh on 29th June; Assam & Meghalaya during 29th-30th June.

West India:

- **Fairly Widespread to Widespread** rainfall likely over Konkan & Goa during 29th June-4th July; Madhya Maharashtra during 3rd-4th July; Gujarat Region on 4th July.
- **Isolated to Scattered** rainfall likely over Madhya Maharashtra during 29th June-2nd July; Marathawada during 29th June-4th July; Gujarat Region during 29th June-3rd July; Saurashtra & Kutch during 29th June-4th July.
- **Isolated thunderstorm, lightning & gusty winds (speed reaching 40-50 kmph gusting to 60 kmph)** likely over Konkan & Goa during 29th June-1st July; Madhya Maharashtra during 29th June-3rd July; Marathawada during 29th June-4th July; Gujarat Region during 1st-2nd July.
- **Isolated heavy rainfall** likely over Konkan & Goa during 29th-30th June; Madhya Maharashtra during 29th June-1st July; Gujarat Region during 2nd-4th July with isolated **very heavy rainfall** also likely over Konkan & Goa during 1st-4th July; Madhya Maharashtra during 2nd-4th July.

South Peninsular India:

- **Isolated to Scattered** rainfall likely over Rayalaseema and Tamil Nadu, Puducherry & Karaikal during 29th June-4th July; North Interior Karnataka during 29th-30th June; South Interior Karnataka on 29th June and on 4th July; Coastal Andhra Pradesh & Yanam during 29th June-3rd July.
- **Fairly Widespread to Widespread** rainfall likely over Coastal Karnataka, Kerala & Mahe, Lakshadweep and Telangana during 29th June-4th July; North Interior Karnataka during 1st-4th July; South Interior Karnataka during 30th June-3rd July; Coastal Andhra Pradesh & Yanam on 4th July.

- Isolated **thunderstorm, lightning & gusty winds (speed reaching 40-50 kmph gusting to 60 kmph)** likely over Tamil Nadu, Puducherry & Karaikal during 29th-30th June; Coastal Andhra Pradesh & Yanam, Kerala & Mahe and Lakshadweep during 29th June-2nd July; North Interior Karnataka on 29th June; Rayalaseema during 1st-2nd July, **with gusty winds (speed reaching 30-40 kmph gusting to 50 kmph)** likely over Coastal Karnataka and Telangana during 29th June-4th July; North Interior Karnataka during 30th June-4th July; Rayalaseema during 29th-30th June.
- Isolated **thunderstorm & lightning** likely over South Interior Karnataka during 29th June-4th July.
- Isolated **heavy rainfall** likely over Coastal Karnataka and Tamil Nadu, Puducherry & Karaikal during 29th-30th June and during 3rd-4th July; Kerala & Mahe during 2nd-4th July; Lakshadweep on 29th June; North Interior Karnataka during 1st-3rd July; South Interior Karnataka on 2nd July; Coastal Andhra Pradesh & Yanam on 29th June and during 1st-4th July; Telangana during 29th June-4th July with isolated **very heavy rainfall** also likely over Kerala & Mahe during 29th June-1st July; Coastal Karnataka during 1st-2nd July; South Interior Karnataka during 30th June-1st July.
- Strong Surface Winds likely over Coastal Karnataka and South Interior Karnataka during 29th June-4th July; North Interior Karnataka during 30th June-4th July.

Forecast of maximum/day temperatures:

- No significant change in maximum temperatures likely over Northwest India till 29th June, gradual fall by 4-6°C during 30th June-02nd July and no significant change thereafter.
- No significant change in maximum temperatures likely over Maharashtra till 30th June and gradual fall by 3-5°C thereafter.
- No significant change in maximum temperatures likely over Gujarat till 01st July and gradual fall by 2-3°C thereafter.
- No significant change in maximum temperatures likely over the rest parts of country till 04th July, 2026.
- **Heat Wave, Hot & Humid weather and Warm Night conditions warning:**
- **Heat wave** conditions very likely in isolated pockets over Bihar on 29th June; Haryana Chandigarh & Delhi during 29th-30th June; East Uttar Pradesh on 29th June; West Uttar Pradesh on 29th June.
Hot and humid weather conditions likely to prevail over Saurashtra & Kutch on 29th June.

Fisherman Warning:

Fishermen are advised not to venture into the following areas:

- **Bay of Bengal:** over westcentral BoB and along & off north Andhra Pradesh coasts during 1st to 03rd July; over south Sri Lanka coasts adjoining southwest & southeast BoB and Andaman Sea during 29th June to 03rd July; over Andaman Sea during 30th June to 03rd July.
- **Arabian Sea:** along and off Somalia coasts and parts of southwest and westcentral Arabian Sea during 29th June to 03rd July; Along and off South Oman Coasts and adjoining westcentral Arabian Sea during 30th June to 03rd July; along & off south Konkan, Goa & Karnataka coast, Lakshadweep area and adjoining eastcentral Arabian Sea along & off Konkan & Goa, Karnataka & Kerala coasts, Lakshadweep area and adjoining eastcentral & southeast Arabian Sea during 29th June to 03rd July; Along & off south Gujarat coast during 01st to 2nd July; Gulf of Mannar & adjoining Comorin area till 2nd July.

Main Weather Observations:

❖ **Significant rainfall recorded (in cm)** (from 0830 hours IST of yesterday to 0530 hours IST of today): **Arunachal Pradesh:** Pasighat (dist East Siang) 12, Itanagar 7; **Kerala & Mahe:** Vaikom (Kottayam) - 9, Cial Kochi (Manual) - 7, Koothattukulam (Ernakulam), Panathur (Kasaragod), Choondi (Ernakulam), Urumi (Kozhikode) 6 Each; **Assam & Meghalaya:** Cherrapunji 18; **Konkan & Goa :** Mumbai Santacruz 10.

❖ **Heavy Rainfall observed** (from 0830 hours IST of yesterday to 0530 hours IST of today): **Extremely heavy rain** at isolated places over Arunachal Pradesh and Meghalaya, **Heavy rain** at isolated places over Kerala & Mahe and Konkan & Goa.

❖ **Minimum Temperature Departures (as on 28-06-2026): markedly above normal (> 5.1°C)** at few places over East Madhya Pradesh; at isolated places over Assam & Meghalaya, Nagaland, Manipur, Mizoram & Tripura, Odisha, Jharkhand, Bihar, East Uttar Pradesh, West Uttar Pradesh, Haryana-Chandigarh-Delhi, Himachal Pradesh, West Rajasthan, West Madhya Pradesh, Gujarat Region and Saurashtra & Kutch. **appreciably above normal(3.1°C to 5.0°C)** at few places over Sub Himalayan West Bengal & Sikkim, Uttarakhand and Punjab; at isolated places over Assam & Meghalaya, Gangetic West Bengal, Odisha, Jharkhand, Bihar, East Uttar Pradesh, West Uttar Pradesh, Haryana-Chandigarh-Delhi, Himachal Pradesh, West Rajasthan, West Madhya Pradesh, East Madhya Pradesh, Gujarat Region, Saurashtra & Kutch, Madhya Maharashtra, Coastal Andhra Pradesh & Yanam, Rayalaseema and Tamil Nadu, Puducherry & Karaikal. **above normal(1.6°C to 3.0°C)** at many places over Bihar, West Rajasthan and Gujarat Region; at few places over Nagaland, Manipur, Mizoram & Tripura, Gangetic West Bengal, Odisha, West Uttar Pradesh, Uttarakhand, Haryana-Chandigarh-Delhi, Himachal Pradesh, Jammu-Kashmir-Ladakh-Gilgit-Baltistan-Muzaffarabad and Coastal Andhra Pradesh & Yanam; at isolated places over Andaman & Nicobar Islands, Assam & Meghalaya, Sub Himalayan West Bengal & Sikkim, Jharkhand, East Uttar Pradesh, Punjab, East Rajasthan, West Madhya Pradesh, East Madhya Pradesh, Saurashtra & Kutch, Konkan & Goa, Madhya Maharashtra, Vidarbha, Chhattisgarh, Telangana, Tamil Nadu, Puducherry & Karaikal, North Interior Karnataka and Kerala & Mahe. **near normal(-1.5°C to 1.5°C)** at many places over Andaman & Nicobar Islands, Saurashtra & Kutch, Konkan & Goa, Madhya Maharashtra, Vidarbha, Coastal Andhra Pradesh & Yanam, Telangana and Tamil Nadu, Puducherry & Karaikal; at most places over Arunachal Pradesh, East Rajasthan, Marathwada, Chhattisgarh, Rayalaseema, Coastal Karnataka, North Interior Karnataka, South Interior Karnataka, Kerala & Mahe and Lakshadweep; at few places over Assam & Meghalaya, Nagaland, Manipur, Mizoram & Tripura, Sub Himalayan West Bengal & Sikkim, Gangetic West Bengal, Odisha, Jharkhand, East Uttar Pradesh, Himachal Pradesh, West Madhya Pradesh and East Madhya Pradesh; at isolated places over Bihar, West Uttar Pradesh, Haryana-Chandigarh-Delhi, Punjab, Jammu-Kashmir-Ladakh-Gilgit-Baltistan-Muzaffarabad, West Rajasthan and Gujarat Region. **The lowest minimum temperature** of 20.4°C was reported at **KHANDWA (MADHYA PRADSH)** over the Plains of India.

❖ **Maximum Temperature Departures (as on 28-06-2026): markedly above normal (> 5.1°C)** at few places over Chhattisgarh; at isolated places over Odisha, East Uttar Pradesh, West Uttar Pradesh, Haryana-Chandigarh-Delhi, Himachal Pradesh, East Madhya Pradesh, Saurashtra & Kutch and Vidarbha. **appreciably above normal (3.1°C to 5.0°C)** at many places over Punjab; at few places over Uttarakhand, Jammu-Kashmir-Ladakh-Gilgit-Baltistan-Muzaffarabad, West Rajasthan, Gujarat Region and Madhya Maharashtra; at isolated places over Assam & Meghalaya, Nagaland, Manipur, Mizoram & Tripura, Gangetic West Bengal, Jharkhand, Bihar, West Madhya Pradesh, Konkan & Goa, Telangana and Tamil Nadu, Puducherry & Karaikal. **above normal (1.6°C to 3.0°C)** at many places over East Rajasthan and Rayalaseema; at few places over Sub Himalayan West Bengal & Sikkim and North Interior Karnataka; at isolated places over Coastal Andhra Pradesh & Yanam. **near normal (-1.5°C to 1.5°C)** at many places over Andaman & Nicobar Islands, South Interior Karnataka and Kerala & Mahe; at most places over Lakshadweep; at few places over Arunachal Pradesh and Coastal Karnataka. **The highest maximum temperature** of 44.4°C was reported at **SRIGANGANAGAR (Rajasthan)**.

***Red color warning does not mean "Red Alert" Red color warning means "Take Action"**

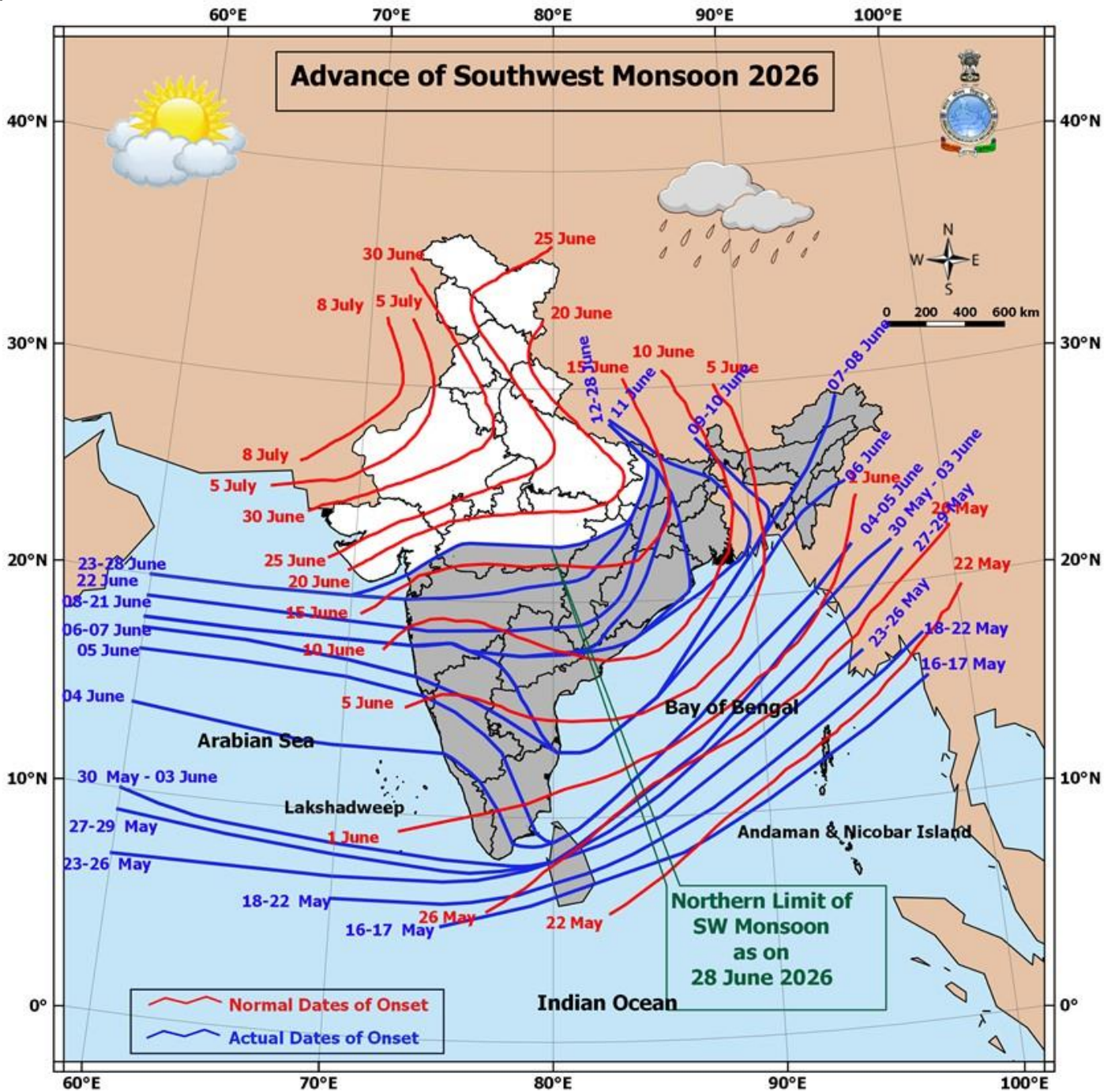
Forecast and warning for any day is valid from 0830 hours IST of day till 0830 hours IST of next day

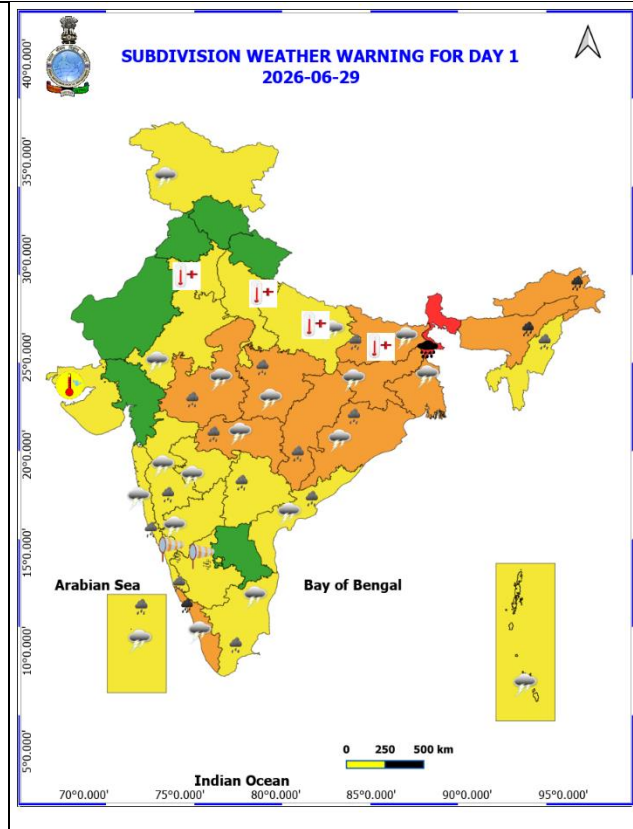
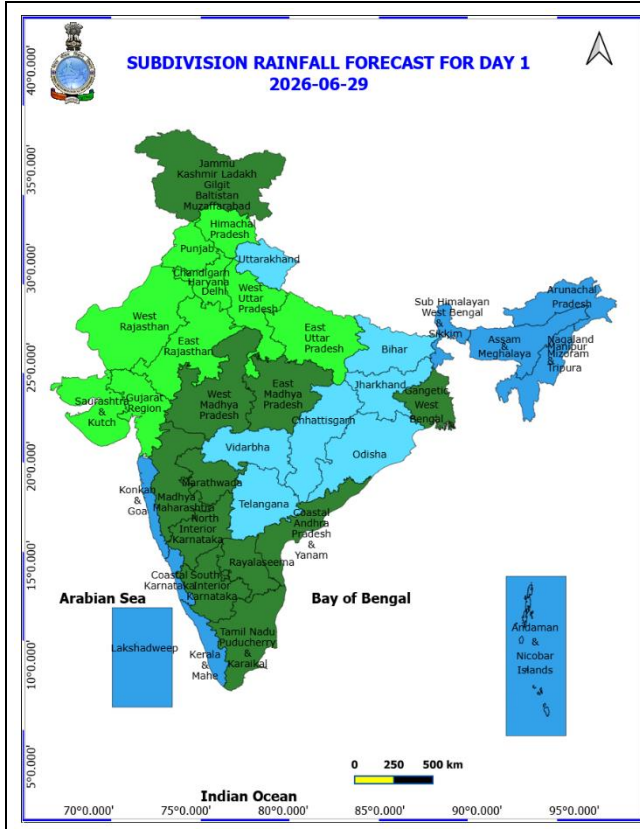
For more details kindly visit <https://mausam.imd.gov.in> or contact 011-2434-4599

(Service to the nation since 1875)

Meteorological Analysis (Based on 0530 hours IST)

- ❖ The **Northern Limit of Monsoon** continues to pass through 20°N/60°E, 20°N/65°E, 20°N/70°E, Surat, Indore, Mandla, Daltonganj, Motihari and 28.3°N/83°E as on 29th June.
- ❖ **Conditions are favourable** for further advance of southwest monsoon into some more parts of North Arabian Sea, Gujarat, Madhya Pradesh, remaining parts of Chhattisgarh, Jharkhand & Bihar, some parts of Uttar Pradesh & Uttarakhand during next 2-3 days and over some more parts of Madhya Pradesh, Uttar Pradesh, Uttarakhand, some parts of Himachal Pradesh, Jammu & Kashmir, Ladakh and southeast Rajasthan during subsequent 2-3 days.
- ❖ The **seasonal trough** at mean sea level from Punjab to Bihar now runs from Punjab to Gangetic West Bengal across Haryana, Uttar Pradesh and Bihar.
- ❖ The **Western Disturbance** as a trough in middle tropospheric westerlies with its axis at 5.8 km above mean sea level now runs roughly along Long 79°E to the north of Lat 25°N.
- ❖ The **trough** from northeast Madhya Pradesh to Telangana across Vidarbha at 0.9 km above mean sea level persists.
- ❖ The upper **air cyclonic circulation** over Madhya Pradesh and neighbourhood between 3.1 & 5.8 km above mean sea level persists.
- ❖ An **upper air cyclonic circulation** lies over northeast Assam & neighbourhood at 1.5 km above mean sea level.
- ❖ The **upper air cyclonic circulation** over Eastcentral Arabian sea off Maharashtra coast between 5.8 and 7.6 km above mean sea level persists.
- ❖ The **upper air cyclonic circulation** over north Telangana & neighbourhood between 5.8 & 7.6 km above mean sea level persists.
- ❖ The **trough** from northern parts of Coastal Andhra Pradesh to Madhya Maharashtra across Chhattisgarh and Marathwada at 4.5 km above mean sea level persists.
- ❖ The **trough** from North Interior Karnataka to Comorin area across Rayalaseema, South Interior Karnataka and Tamil Nadu extending upto 1.5km above mean sea level persists.
- ❖ A fresh **Western Disturbance** is likely to affect Northwest India from 02nd July, 2026.





29 June (Day 1)

- ❖ **Heavy to Very Heavy Rainfall with isolated Extremely Heavy Rainfall** very likely at isolated places over Sub Himalayan West Bengal & Sikkim.
- ❖ **Heavy to Very Heavy Rainfall** very likely at isolated places over Arunachal Pradesh, Assam & Meghalaya and Kerala & Mahe.
- ❖ **Heavy Rainfall** very likely at isolated places over Bihar, Chhattisgarh, Coastal Andhra Pradesh, Coastal Karnataka, Konkan & Goa, Lakshadweep, Madhya Maharashtra, Madhya Pradesh, Nagaland, Manipur, Mizoram and Tripura, Odisha, Tamil Nadu Puducherry & Karaikal, Telangana and Vidarbha.
- ❖ **Thunderstorm accompanied with lightning & gusty winds(40-60kmph)** very likely at isolated places over Andaman & Nicobar Islands, Bihar, Coastal Andhra Pradesh, East Rajasthan, East Uttar Pradesh, Gangetic West Bengal, Jammu-Kashmir-Ladakh-Gilgit-Baltistan-Muzaffargarh, Jharkhand, Kerala & Mahe, Konkan & Goa, Lakshadweep, Madhya Pradesh, Maharashtra, North Interior Karnataka, Odisha and Tamil Nadu Puducherry & Karaikal.
- ❖ **Thunderstorm accompanied with lightning & gusty winds(30-40kmph)** very likely at isolated places over Coastal Karnataka, Rayalaseema, Sub Himalayan West Bengal & Sikkim, Telangana, Uttarakhand and West Rajasthan.
- ❖ **Thunderstorm accompanied with Lightning** very likely at isolated places over Arunachal Pradesh, Assam & Meghalaya, Chhattisgarh, Himachal Pradesh, Nagaland, Manipur, Mizoram and Tripura and South Interior Karnataka.
- ❖ **Strong Surface Winds** very likely at isolated places over Coastal Karnataka and South Interior Karnataka.

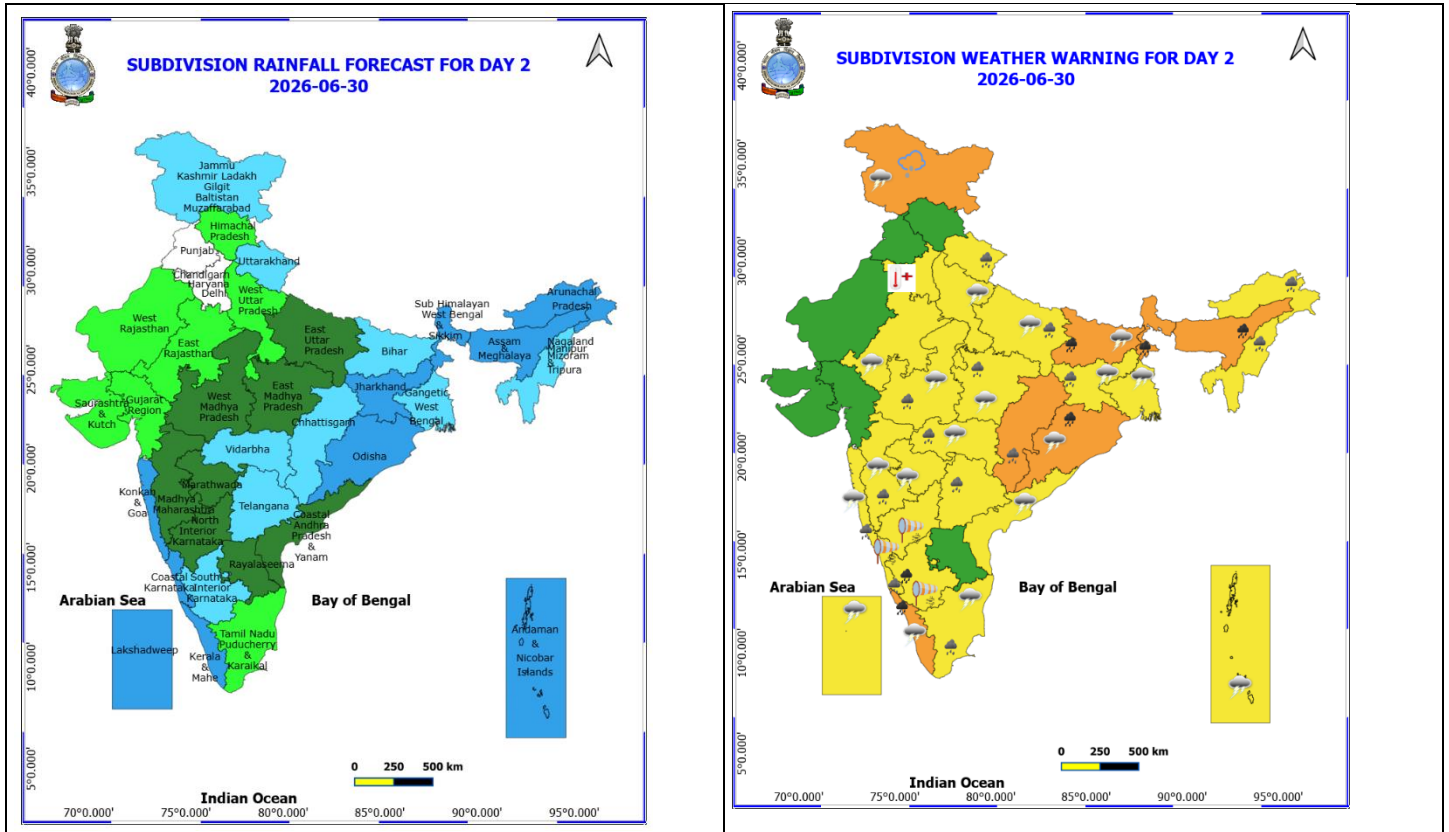
*Red color warning does not mean "Red Alert" Red color warning means "Take Action"

Forecast and warning for any day is valid from 0830 hours IST of day till 0830 hours IST of next day

For more details kindly visit <https://mausam.imd.gov.in> or contact 011-2434-4599

(Service to the nation since 1875)

- ❖ **Heat Wave conditions** very likely at isolated places over Bihar, Haryana, Chandigarh & Delhi and Uttar Pradesh.
 - ❖ **Hot and Humid weather** very likely at isolated places over Saurashtra & Kutch.
-
- ❖ Arabian Sea: Squally wind with speed 45-55 kmph gusting to 65 kmph is likely to prevail along and off Somalia coasts, some parts of southwest and westcentral Arabian Sea.
 - ❖ Squally weather with wind speed 40-50 gusting to 60 kmph is likely to prevail along & off Konkan & Goa, Karnataka & Kerala coasts, Lakshadweep area and adjoining eastcentral Arabian Sea.
 - ❖ Bay of Bengal: Squally wind with speed 45-55 kmph gusting to 65 kmph is likely to prevail along and off south Sri Lanka adjoining some parts of southwest Bay of Bengal.
 - ❖ Squally Weather with wind speed 40-50 kmph gusting to 60 kmph is likely to prevail over Gulf of Mannar & adjoining Comorin area.



30 June (Day 2)

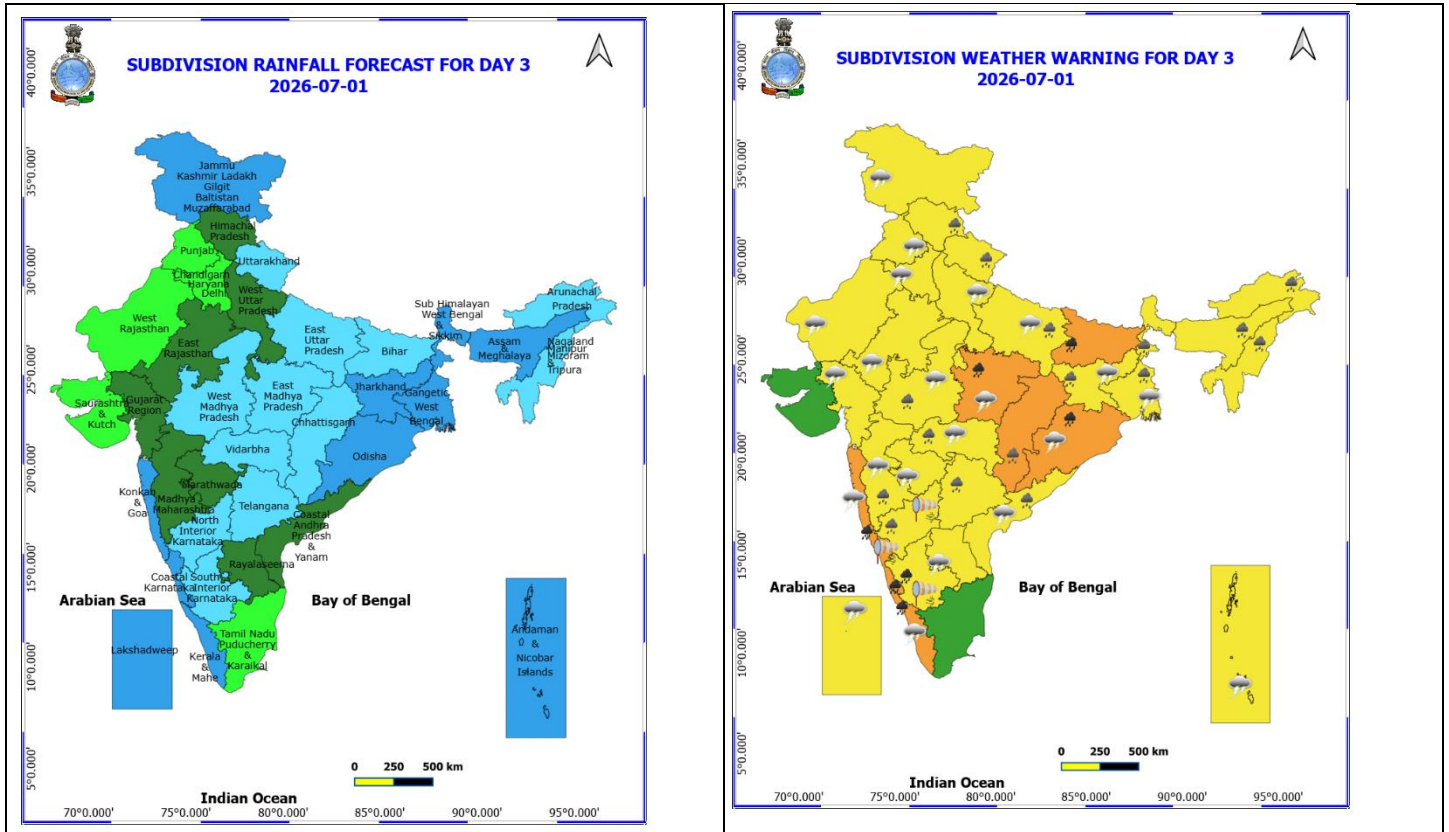
- ❖ **Heavy to Very Heavy Rainfall** very likely at isolated places over Assam & Meghalaya, Bihar, Kerala & Mahe, Odisha, South Interior Karnataka and Sub Himalayan West Bengal & Sikkim.
- ❖ **Heavy Rainfall** very likely at isolated places over Arunachal Pradesh, Chhattisgarh, Coastal Karnataka, East Uttar Pradesh, Jharkhand, Konkan & Goa, Madhya Maharashtra, Madhya Pradesh, Nagaland, Manipur, Mizoram and Tripura, Tamil Nadu Puducherry & Karaikal, Telangana, Uttarakhand and Vidarbha.
- ❖ **Thunderstorm accompanied with Hailstorm** very likely at isolated places over Jammu-Kashmir-Ladakh-Gilgit-Baltistan-Muzaffarabad.
- ❖ **Thunderstorm accompanied with lightning & gusty winds(40-50kmph)** very likely at isolated places over Andaman & Nicobar Islands, Bihar, Coastal Andhra Pradesh, East Rajasthan, Gangetic West Bengal, Jammu-Kashmir-Ladakh-Gilgit-Baltistan-Muzaffarabad, Jharkhand, Kerala & Mahe, Konkan & Goa, Lakshadweep, Madhya Pradesh, Maharashtra, Odisha, Tamil Nadu Puducherry & Karaikal and Uttar Pradesh.
- ❖ **Thunderstorm accompanied with lightning & gusty winds(30-40kmph)** very likely at isolated places over Coastal Karnataka, Himachal Pradesh, North Interior Karnataka, Rayalaseema, Sub Himalayan West Bengal & Sikkim, Telangana, Uttarakhand and West Rajasthan.
- ❖ **Thunderstorm accompanied with Lightning** very likely at isolated places over Arunachal Pradesh, Assam & Meghalaya, Chhattisgarh, Nagaland, Manipur, Mizoram and Tripura and South Interior Karnataka.
- ❖ **Strong Surface Winds** very likely at isolated places over Karnataka.
- ❖ **Heat Wave conditions** very likely at isolated places over Haryana, Chandigarh & Delhi.

***Red color warning does not mean "Red Alert" Red color warning means "Take Action"**
Forecast and warning for any day is valid from 0830 hours IST of day till 0830 hours IST of next day
For more details kindly visit <https://mausam.imd.gov.in> or contact 011-2434-4599

(Service to the nation since 1875)



- ❖ Arabian Sea: Squally wind with speed 45-55 kmph gusting to 65 kmph is likely to prevail along and off Somalia coasts, some parts of southwest and most parts of westcentral Arabian Sea adjoining south Oman coast.
- ❖ Squally weather with wind speed 40-50 gusting to 60 kmph is likely to prevail along & off Konkan & Goa, Karnataka & Kerala coasts, Lakshadweep area and adjoining eastcentral Arabian Sea.
- ❖ Bay of Bengal: Squally wind with speed 45-55 kmph gusting to 65 kmph is likely to prevail along and off south Sri Lanka adjoining some parts of southwest Bay of Bengal.
- ❖ Squally Weather with wind speed 40-50 kmph gusting to 60 kmph is likely to prevail over Gulf of Mannar & adjoining Comorin area and over north adjoining south Andaman Sea. ast BoB, over most parts of westcentral BoB and along & off coastal Andhra Pradesh and Andaman Sea.



01 July (Day 3)

- ❖ **Heavy to Very Heavy Rainfall** likely at isolated places over Bihar, Coastal Karnataka, East Madhya Pradesh, Kerala & Mahe, Konkan & Goa, Odisha and South Interior Karnataka.
- ❖ **Heavy Rainfall** likely at isolated places over Arunachal Pradesh, Assam & Meghalaya, Chhattisgarh, Coastal Andhra Pradesh, East Uttar Pradesh, Himachal Pradesh, Jharkhand, Madhya Maharashtra, Nagaland, Manipur, Mizoram and Tripura, North Interior Karnataka, Telangana, Uttarakhand, Vidarbha, West Bengal & Sikkim and West Madhya Pradesh.
- ❖ **Thunderstorm accompanied with lightning & gusty winds(40-50kmph)** likely at isolated places over Andaman & Nicobar Islands, Andhra Pradesh, Gangetic West Bengal, Gujarat Region, Haryana, Chandigarh & Delhi, Jammu-Kashmir-Ladakh-Gilgit-Baltistan-Muzaffarabad, Jharkhand, Kerala & Mahe, Konkan & Goa, Lakshadweep, Madhya Pradesh, Maharashtra, Odisha, Punjab, Rajasthan and Uttar Pradesh.
- ❖ **Thunderstorm accompanied with lightning & gusty winds(30-40kmph)** likely at isolated places over Bihar, Coastal Karnataka, Himachal Pradesh, North Interior Karnataka, Sub Himalayan West Bengal & Sikkim, Telangana and Uttarakhand.
- ❖ **Thunderstorm accompanied with Lightning** likely at isolated places over Arunachal Pradesh, Assam & Meghalaya, Chhattisgarh, Nagaland, Manipur, Mizoram and Tripura and South Interior Karnataka.
- ❖ **Strong Surface Winds** likely at isolated places over Karnataka.
- ❖ **Arabian Sea:** Squally wind with speed 45-55 kmph gusting to 65 kmph is likely to prevail along and off Somalia coasts, some parts of southwest and many parts of westcentral Arabian Sea adjoining south Oman coast.
- ❖ Squally weather with wind speed 40-50 gusting to 60 kmph is likely to prevail along & off south Gujarat, Konkan &

***Red color warning does not mean "Red Alert" Red color warning means "Take Action"**
Forecast and warning for any day is valid from 0830 hours IST of day till 0830 hours IST of next day
For more details kindly visit <https://mausam.imd.gov.in> or contact 011-2434-4599

(Service to the nation since 1875)



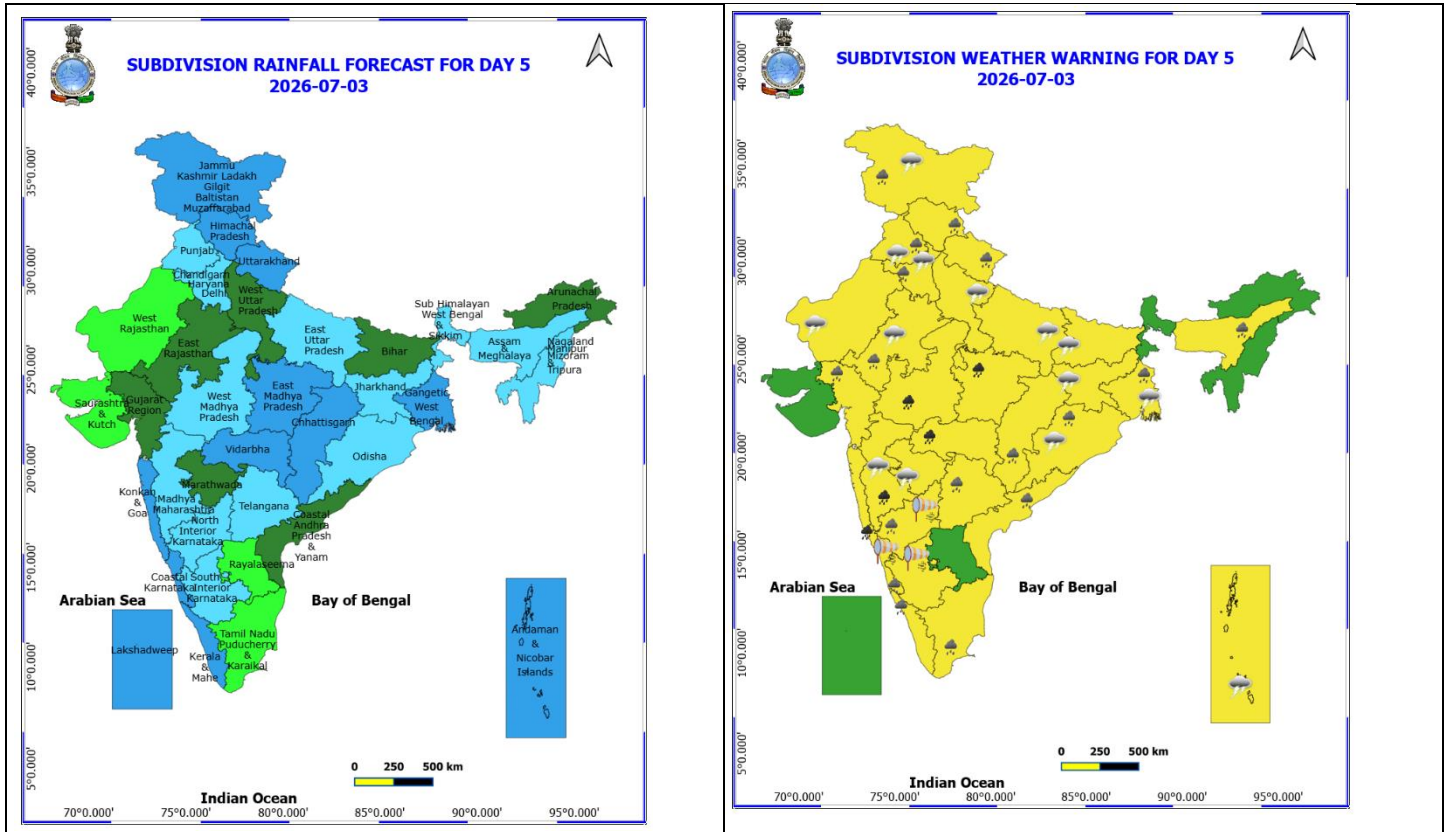
Goa, Karnataka, Kerala coasts, Lakshadweep area and adjoining eastcentral Arabian Sea.

- ❖ Bay of Bengal: Squally wind with speed 45-55 kmph gusting to 65 kmph is likely to prevail along and off south Sri Lanka adjoining some parts of southwest Bay of Bengal.
- ❖ Squally Weather with wind speed 40-50 kmph gusting to 60 kmph is likely to prevail over Gulf of Mannar & adjoining Comorin area, along and off north Andhra Pradesh coasts adjoining westcentral Bay of Bengal; most parts of south BoB and Andaman Sea.



Goa, Karnataka, Kerala coasts, Lakshadweep area and adjoining eastcentral Arabian Sea.

- ❖ Bay of Bengal: Squally wind with speed 45-55 kmph gusting to 65 kmph is likely to prevail along and off south Sri Lanka adjoining some parts of southwest Bay of Bengal.
- ❖ Squally Weather with wind speed 40-50 kmph gusting to 60 kmph is likely to prevail over Gulf of Mannar & adjoining Comorin area, along and off north Andhra Pradesh coasts adjoining westcentral Bay of Bengal; most parts of south BoB and Andaman Sea.



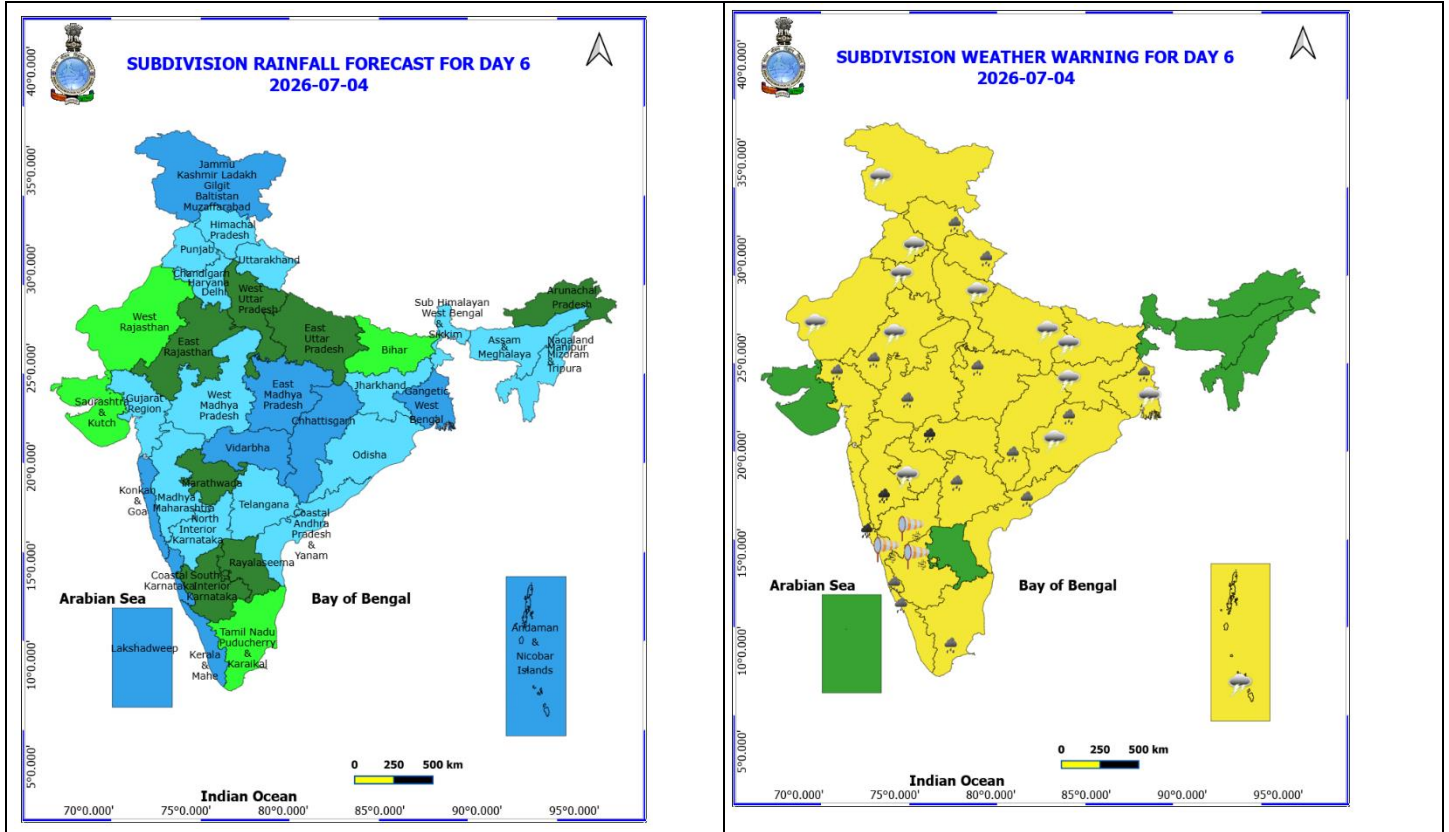
3 July (Day 5)

- ❖ **Heavy to Very Heavy Rainfall** likely at isolated places over Konkan & Goa, Madhya Maharashtra, Madhya Pradesh and Vidarbha.
- ❖ **Heavy Rainfall** likely at isolated places over Assam & Meghalaya, Chhattisgarh, Coastal Andhra Pradesh, Coastal Karnataka, East Rajasthan, Gangetic West Bengal, Gujarat Region, Haryana, Chandigarh & Delhi, Himachal Pradesh, Jammu-Kashmir-Ladakh-Gilgit-Baltistan-Muzaffarabad, Kerala & Mahe, North Interior Karnataka, Odisha, Punjab, Tamil Nadu Puducherry & Karaikal, Telangana and Uttarakhand.
- ❖ **Thunderstorm accompanied with lightning & gusty winds(40-50kmph)** likely at isolated places over Andaman & Nicobar Islands, Bihar, Gangetic West Bengal, Haryana, Chandigarh & Delhi, Jammu-Kashmir-Ladakh-Gilgit-Baltistan-Muzaffarabad, Jharkhand, Madhya Maharashtra, Marathwada, Odisha, Punjab, Rajasthan and Uttar Pradesh.
- ❖ **Thunderstorm accompanied with lightning & gusty winds(30-40kmph)** likely at isolated places over Coastal Karnataka, Himachal Pradesh, North Interior Karnataka and Telangana.
- ❖ **Thunderstorm accompanied with Lightning** likely at isolated places over South Interior Karnataka and Uttarakhand.
- ❖ **Strong Surface Winds** likely at isolated places over Karnataka.

No Fishermen Warning

***Red color warning does not mean "Red Alert" Red color warning means "Take Action"**
Forecast and warning for any day is valid from 0830 hours IST of day till 0830 hours IST of next day
For more details kindly visit <https://mausam.imd.gov.in> or contact 011-2434-4599

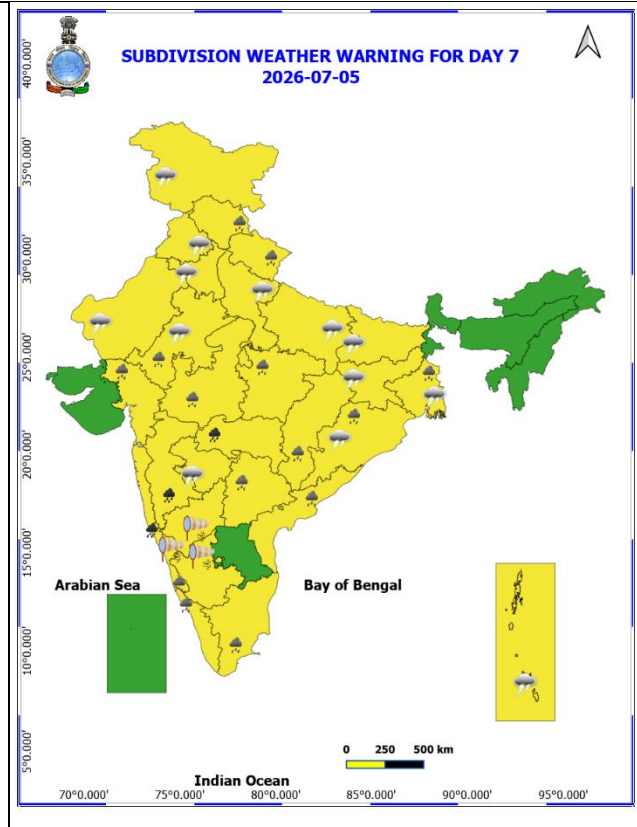
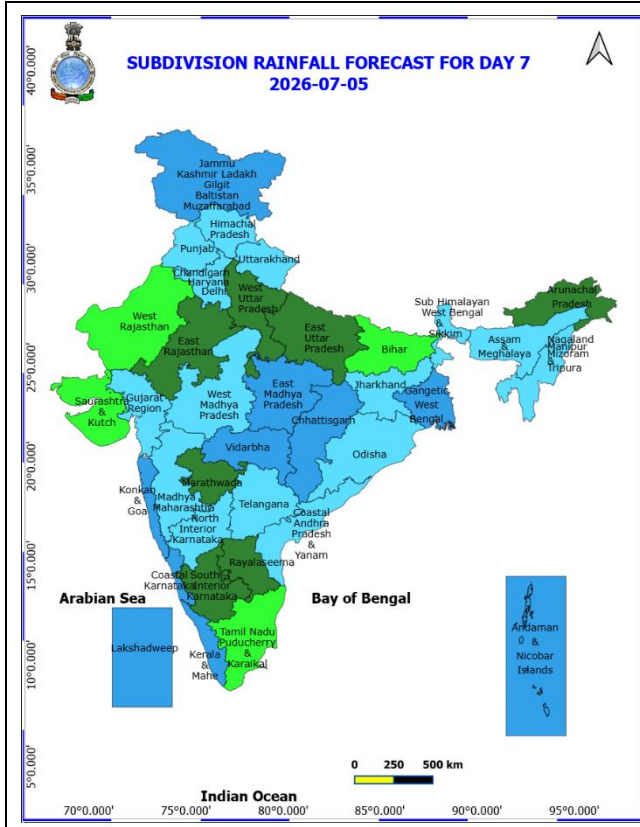
(Service to the nation since 1875)



4 July (Day 6)

- ❖ **Heavy to Very Heavy Rainfall** likely at isolated places over Konkan & Goa, Madhya Maharashtra and Vidarbha.
- ❖ **Heavy Rainfall** likely at isolated places over Chhattisgarh, Coastal Andhra Pradesh, Coastal Karnataka, East Rajasthan, Gangetic West Bengal, Gujarat Region, Himachal Pradesh, Kerala & Mahe, Madhya Pradesh, Odisha, Tamil Nadu Puducherry & Karaikal, Telangana and Uttarakhand.
- ❖ **Thunderstorm accompanied with lightning & gusty winds(40-50kmph)** likely at isolated places over Andaman & Nicobar Islands, Bihar, Gangetic West Bengal, Haryana, Chandigarh & Delhi, Jammu-Kashmir-Ladakh-Gilgit-Baltistan-Muzaffarabad, Jharkhand, Marathwada, Odisha, Punjab, Rajasthan and Uttar Pradesh.
- ❖ **Thunderstorm accompanied with lightning & gusty winds(30-40kmph)** likely at isolated places over Coastal Karnataka, Himachal Pradesh, North Interior Karnataka and Telangana.
- ❖ **Thunderstorm accompanied with Lightning** likely at isolated places over South Interior Karnataka.
- ❖ **Strong Surface Winds** likely at isolated places over Karnataka.

No Fishermen Warning



5 July (Day 7)

- ❖ **Heavy to Very Heavy Rainfall** likely at isolated places over Konkan & Goa, Madhya Maharashtra and Vidarbha.
- ❖ **Heavy Rainfall** likely at isolated places over Chhattisgarh, Coastal Andhra Pradesh, Coastal Karnataka, East Rajasthan, Gangetic West Bengal, Gujarat Region, Himachal Pradesh, Kerala & Mahe, Madhya Pradesh, Odisha, Tamil Nadu Puducherry & Karaikal, Telangana and Uttarakhand.
- ❖ **Thunderstorm accompanied with lightning & gusty winds(40-50kmph)** likely at isolated places over Andaman & Nicobar Islands, Bihar, Gangetic West Bengal, Haryana, Chandigarh & Delhi, Jammu-Kashmir-Ladakh-Gilgit-Baltistan-Muzaffarabad, Jharkhand, Marathwada, Odisha, Punjab, Rajasthan and Uttarakhand.
- ❖ **Thunderstorm accompanied with lightning & gusty winds(30-40kmph)** likely at isolated places over Coastal Karnataka, Himachal Pradesh, North Interior Karnataka and Telangana.
- ❖ **Thunderstorm accompanied with Lightning** likely at isolated places over South Interior Karnataka.
- ❖ **Strong Surface Winds** likely at isolated places over Karnataka.

No Fishermen Warning

Flash Flood Warnings

Moderate flash flood risk likely over few watersheds & neighbourhoods of following Met Sub-divisions during next 24 hours.

Sub-Himalayan West Bengal & Sikkim - East Sikkim, North Sikkim, West Sikkim, Darjeeling, Jalpaiguri and Kochbihar districts

Assam & Meghalaya - Baksa, Barpeta, Bongaigaon, Chirang, Dibrugarh, Kokrajhar, N.C Hills, East Khasi Hills, West Khasi Hills, Dhubri, West Garo Hills, Goalpara and Jaintia Hills districts.

Surface runoff/ Inundation may occur at some fully saturated soils & low-lying areas over Area of Concern (AoC) as shown in map due to expected rainfall occurrence in next 24 hours.

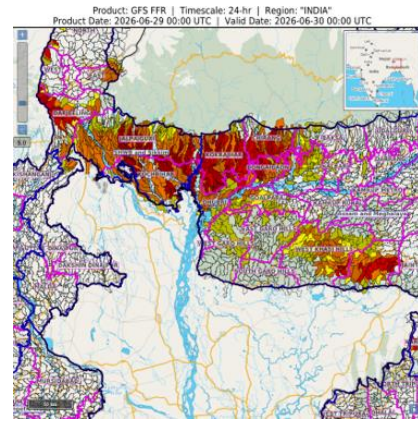




Table-1

7 Days Rainfall Forecast

S.No.	Subdivision	29- Jun	30- Jun	1- Jul	2- Jul	3- Jul	4- Jul	5- Jul
		Day 1	Day 2	Day 3	Day 4	Day 5	Day 6	Day 7
1	ANDAMAN & NICOBAR ISLANDS	WS	WS	WS	WS	WS	WS	WS
2	ARUNACHAL PRADESH	WS	WS	FWS	FWS	SCT	SCT	SCT
3	ASSAM & MEHGHALAYA	WS	WS	WS	FWS	FWS	FWS	FWS
4	N. M. M. & T.	WS	FWS	FWS	FWS	FWS	FWS	FWS
5	S.H. WEST BENGAL & SIKKIM	WS	WS	WS	FWS	FWS	FWS	FWS
6	GANGETIC WEST BENGAL	SCT	FWS	WS	FWS	WS	WS	WS
7	ODISHA	FWS	WS	WS	FWS	FWS	FWS	FWS
8	JHARKHAND	FWS	WS	WS	FWS	FWS	FWS	FWS
9	BIHAR	FWS	FWS	FWS	SCT	SCT	ISOL	ISOL
10	EAST UTTAR PRADESH	ISOL	SCT	FWS	FWS	FWS	SCT	SCT
11	WEST UTTAR PRADESH	ISOL	ISOL	SCT	FWS	SCT	SCT	SCT
12	UTTARAKHAND	FWS	FWS	FWS	WS	WS	FWS	FWS
13	HARYANA, CHD & DELHI	ISOL	DRY	ISOL	SCT	FWS	FWS	FWS
14	PUNJAB	ISOL	DRY	ISOL	SCT	FWS	FWS	FWS
15	HIMACHAL PRADESH	ISOL	ISOL	SCT	WS	WS	FWS	FWS
16	JAMMU AND KASHMIR AND LADAKH	SCT	FWS	WS	WS	WS	WS	WS
17	WEST RAJASTHAN	ISOL	ISOL	ISOL	ISOL	ISOL	ISOL	ISOL
18	EAST RAJASTHAN	ISOL	ISOL	SCT	SCT	SCT	SCT	SCT
19	WEST MADHYA PRADESH	SCT	SCT	FWS	FWS	FWS	FWS	FWS
20	EAST MADHYA PRADESH	SCT	SCT	FWS	FWS	WS	WS	WS
21	GUJRAT REGION	ISOL	ISOL	SCT	SCT	SCT	FWS	FWS
22	SAURASHTRA & KUTCH	ISOL	ISOL	ISOL	ISOL	ISOL	ISOL	ISOL
23	KONKAN & GOA	WS	WS	WS	WS	WS	WS	WS
24	MADHYA MAHARASHTRA	SCT	SCT	SCT	SCT	FWS	FWS	FWS
25	MARATHWADA	SCT	SCT	SCT	SCT	SCT	SCT	SCT
26	VIDARBHA	FWS	FWS	FWS	WS	WS	WS	WS
27	CHATTISGARH	FWS	FWS	FWS	WS	WS	WS	WS
28	COASTAL ANDHRA PRADESH	SCT	SCT	SCT	SCT	SCT	FWS	FWS
29	TELANGANA	FWS	FWS	FWS	FWS	FWS	FWS	FWS
30	RAYALASEEMA	SCT	SCT	SCT	ISOL	ISOL	SCT	SCT
31	TAMILNADU & PUDUCHERRY	SCT	ISOL	ISOL	ISOL	ISOL	ISOL	ISOL
32	COSTAL KARNATAKA	WS	WS	WS	WS	WS	WS	WS
33	NORTH INTERIOR KARNATAKA	SCT	SCT	FWS	FWS	FWS	FWS	FWS
34	SOUTH INTERIOR KARNATAKA	SCT	FWS	FWS	FWS	FWS	SCT	SCT
35	KERALA	WS	WS	WS	WS	WS	WS	WS
36	LAKSHDWEEP	WS	WS	WS	WS	WS	WS	WS

Legend	Category	%Stations
WS	Widespread/Most Places	76-100
FWS	Fairly Widespread/Many Places	51-75
SCT	Scattered/ A Few Places	26-50
ISOL	Isolated Places	1-25
DRY	No Rain	0

***Red color warning does not mean "Red Alert" Red color warning means "Take Action"**
Forecast and warning for any day is valid from 0830 hours IST of day till 0830 hours IST of next day
For more details kindly visit <https://mausam.imd.gov.in> or contact 011-2434-4599

(Service to the nation since 1875)

Fig. 1: Maximum Temperatures Dated 2026-06-28

Fig. 2: Departure of Maximum Temp. Dated 2026-06-28

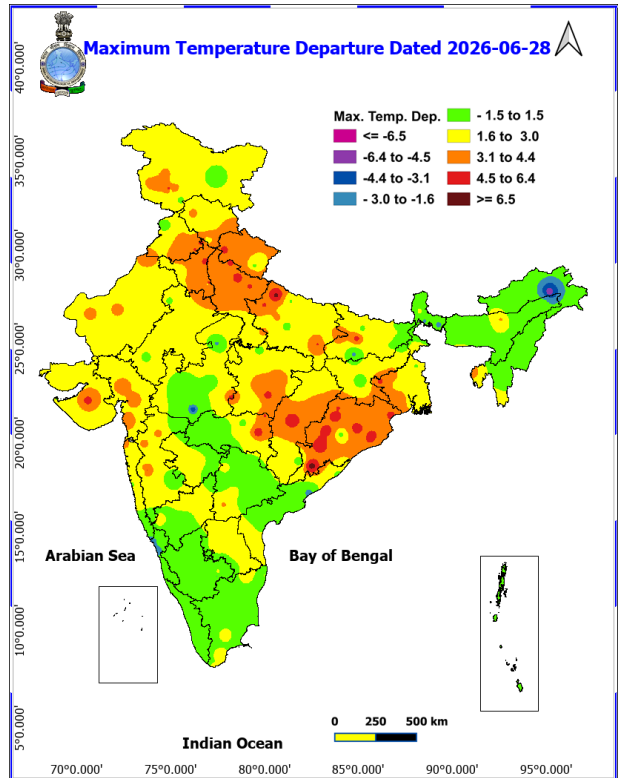
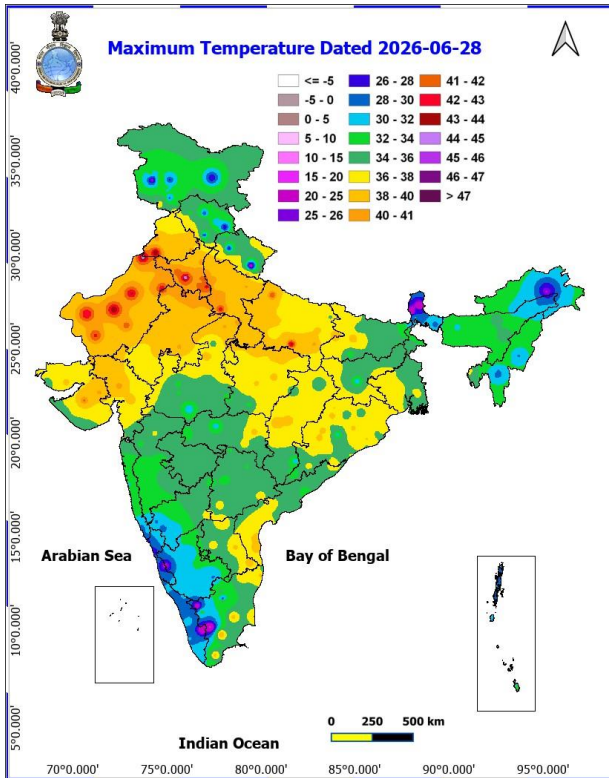
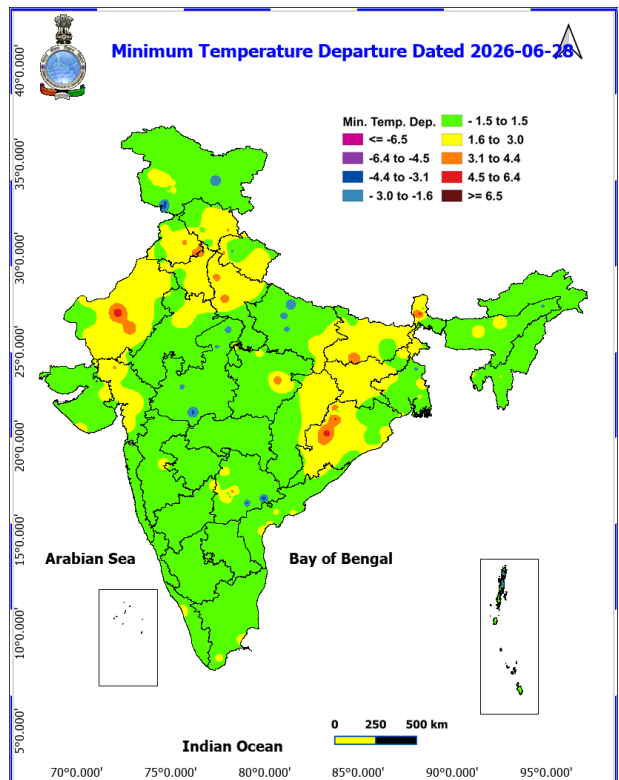
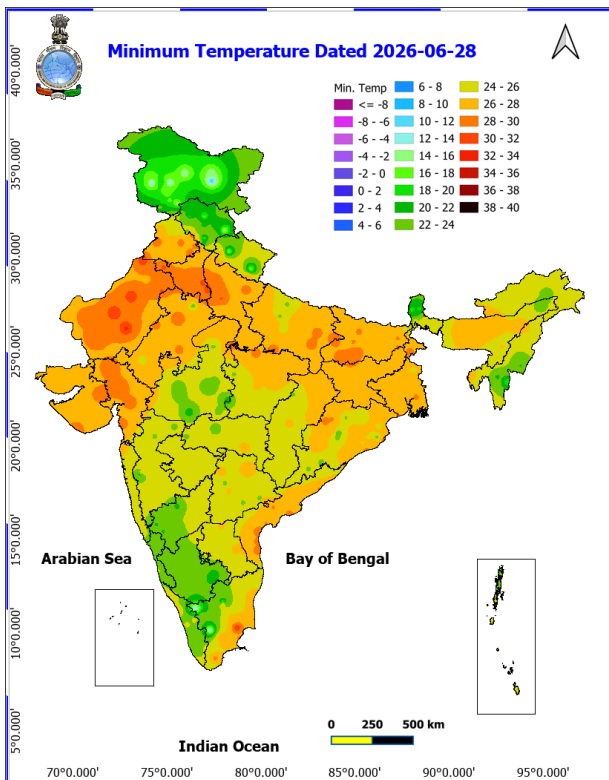


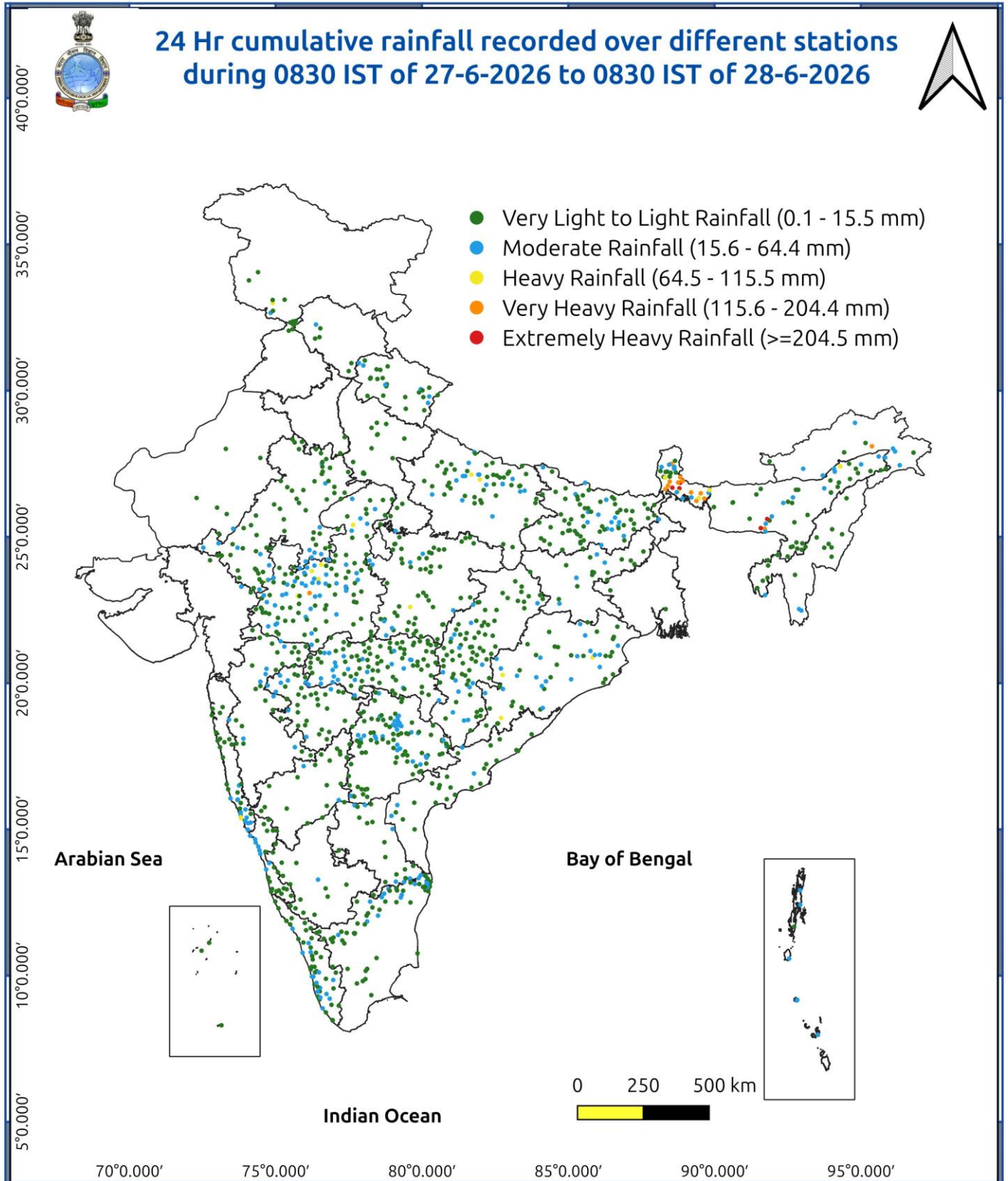
Fig. 3: Minimum Temperatures Dated 2026-06-28

Fig. 4: Departure of Minimum Temp. Dated 2026-06-28



***Red color warning does not mean "Red Alert" Red color warning means "Take Action"**
Forecast and warning for any day is valid from 0830 hours IST of day till 0830 hours IST of next day
For more details kindly visit <https://mausam.imd.gov.in> or contact 011-2434-4599

(Service to the nation since 1875)



***Red color warning does not mean "Red Alert" Red color warning means "Take Action"**
Forecast and warning for any day is valid from 0830 hours IST of day till 0830 hours IST of next day
For more details kindly visit <https://mausam.imd.gov.in> or contact 011-2434-4599

(Service to the nation since 1875)

Impact and Actions

Impact Expected & Action Suggested due to heavy/very heavy rainfall over

- ♦ **Heavy to very heavy rainfall at many places with extremely heavy rainfall likely at isolated places over Sub-Himalayan West Bengal & Sikkim on 29th June;**
Isolated **very heavy rainfall** also likely over West Madhya Pradesh during 2nd-3rd July; East Madhya Pradesh during 1st-3rd July; Vidarbha during 3rd-4th July; Sub-Himalayan West Bengal & Sikkim on 30th June; Bihar and Odisha during 30th June-1st July; Arunachal Pradesh on 29th June; Assam & Meghalaya during 29th-30th June; Konkan & Goa during 1st-4th July; Madhya Maharashtra during 2nd-4th July; Kerala & Mahe during 29th June-1st July; Coastal Karnataka during 1st-2nd July; South Interior Karnataka during 30th June-1st July.

Impact Expected

Localized Flooding of roads, water logging in low lying areas and closure of underpasses mainly in urban areas.

Occasional reduction in visibility due to heavy rainfall.

Disruption of traffic in major cities due to water logging in roads leading to increased travel time.

Minor damage to kutcha roads.

Possibilities of damage to vulnerable structure.

Localized Landslides/Mudslides/landslips/mudslips/landsinks/mudsinks.

Damage to horticulture and standing crops in some areas due to inundation.

It may lead to riverine flooding in some river catchments (for riverine flooding please visit Web page of CWC)

Action Suggested

Check for traffic congestion on your route before leaving for your destination.

Follow any traffic advisories that are issued in this regard.

Avoid going to areas that face the water logging problems often.

Avoid staying in vulnerable structure.

Impact expected and action suggested due to isolated thunderstorm with lightning, gusty/squally winds

- ♦ **Moderate to intense lightning activity likely over Central and East India during next 2-3 days.**
- ♦ Isolated **Hailstorm** activity likely over Jammu-Kashmir-Ladakh-Gilgit-Baltistan-Muzaffarabad on 30th June.

Impact expected:

- ♦ Breaking of tree branches, uprooting of large avenue trees. Large dead limbs blown from trees. Damage to Standing crops.
- ♦ Minor to Major damage to banana and papaya trees.
- ♦ Minor to major damage to power and communication lines due to breaking of branches.
- ♦ Strong wind/hail may damage plantation, horticulture and standing crops.
- ♦ Partial damage to vulnerable structures due to strong winds.

- ♦ Minor damage to kutcha houses/walls and huts.
- ♦ Loose objects may fly.

Action suggested:

- ♦ People are advised to keep a watch on the weather for worsening conditions and be ready to move to safer places accordingly.
- ♦ Stay indoors, close windows & doors and avoid travel if possible.
- ♦ Take safe shelters; do not take shelter under trees.
- ♦ Do not lie on concrete floors and do not lean against concrete walls.
- ♦ Unplug electrical/ electronic appliances.
- ♦ Immediately get out of water bodies.
- ♦ Keep away from all the objects that conduct electricity.

Impact expected and action suggested due to Heat wave conditions:

- ♦ **Heat wave** conditions very likely in isolated pockets over Bihar on 29th June; Haryana Chandigarh & Delhi during 29th-30th June; East Uttar Pradesh on 29th June; West Uttar Pradesh on 29th June.

Alert Areas

High temperature & increased likelihood of heat illness symptoms in people who are either exposed to sun for a prolonged period or doing heavy work.

- ♦ High health concern for vulnerable people e.g. infants, elderly, people with chronic diseases. Avoid heat exposure– keep cool. Avoid dehydration.
- ♦ Drink sufficient water- even if not thirsty.
- ♦ Use ORS, homemade drinks like lassi, torani (rice water), lemon water, buttermilk, etc. to keep yourself hydrated.
- ♦

Agromet advisories for various parts of the country

Agromet advisories for likely impact of Heavy Rainfall

Agromet advisories for likely impact of Heavy Rainfall

- ♦ In **Arunachal Pradesh**, ensure proper drainage in vegetables, maize, rice nursery and other crop fields to prevent waterlogging. Harvest mature vegetables and fruits to avoid crop losses.
- ♦ In **Assam**, ensure proper drainage arrangements for quick removal of excess water from rice nurseries, jute, ginger, turmeric, vegetables, banana, citrus and papaya. Avoid nursery sowing of *Sali* rice and sowing of jute, maize and vegetables during heavy rainfall. Cover the already seeded area with natural mulching materials like straw, farm residues etc. Provide mechanical support to the sugarcane crop to prevent lodging.
- ♦ In **Meghalaya**, ensure proper drainage channels in rice nurseries, maize, ginger, cowpea, vegetable fields and banana plantations. Protect young seedlings from direct exposure to heavy rainfall. Use propping (bamboo or wooden poles) to support heavily laden plants.
- ♦ In **Nagaland**, delay transplanting of brinjal in main field. For already transplanted seedlings, maintain proper drainage in and around the fields of maize, vegetables and orchard.
- ♦ In **Manipur**, avoid transplanting of rice during heavy rainfall. Ensure proper drainage in soybean, chilli, ginger, turmeric, banana and other crop fields and newly transplanted seedlings and nursery crops to avoid water stagnation.
- ♦ In **Mizoram**, create drainage channels surrounding the rice fields and utilize grass mulch to cover the seeds.

***Red color warning does not mean "Red Alert" Red color warning means "Take Action"**

Forecast and warning for any day is valid from 0830 hours IST of day till 0830 hours IST of next day

For more details kindly visit <https://mausam.imd.gov.in> or contact 011-2434-4599

(Service to the nation since 1875)

Provide support to fruit-bearing or partially lodge plants/trees. Propping should be done to prevent maize plants from lodging.

- ♦ In **Tripura**, ensure adequate drainage arrangements to remove excess water from rice and vegetable fields during heavy rainfall.
- ♦ In **Sub Himalayan West Bengal and Sikkim** avoid nursery sowing of rice during heavy rainfall; protect already sown rice nursery beds with straw mulch, dry grass, or temporary polythene / agro-net covers to prevent seed washing, poor germination and seedling loss. Drain out excess water from jute, ginger, chilli, tomato and dalley khorsani fields and nurseries of *kharif* rice, finger millet and vegetables.
- ♦ In **Konkan** and *ghat* areas of **Madhya Maharashtra**, make arrangement to drain out excess water from nurseries of rice, finger millet and vegetables.
- ♦ In **Keralam**, drain out excess water from banana, coconut, cardamom, ginger, black pepper and vegetables. Provide staking support in banana plants and strengthen the pandals of vegetable crops. Avoid transplanting of rice during heavy rain.
- ♦ In **Tamil Nadu**, undertake harvesting of matured pearl millet and picking of cotton during clear weather and store the harvested produce at safer places.
- ♦ In **Coastal Karnataka**, ensure proper drainage in rice seedbeds and fruit orchards to prevent water stagnation.
- ♦ In **Lakshadweep**, provide adequate drainage in standing crop fields to prevent waterlogging.
- ♦
- ♦ In **Coastal Andhra Pradesh**, maintain adequate drainage in rice nursery, maize fields and horticultural crops (mango, banana *etc.*) to avoid water stagnation.
- ♦ In the regions expecting heavy rainfall, including **Vidarbha, East Madhya Pradesh, Chhattisgarh, Gujarat, Odisha, Andaman & Nicobar and Bihar** withhold irrigation in standing crops, make necessary arrangements to remove excess rainwater from the crop fields.

Agromet advisories for likely impact of High temperatures / Heat Waves

- ♦ In **Bihar and Uttar Pradesh, East Madhya Pradesh and Haryana** apply light irrigation as per requirement in vegetable crops and fruit orchards. Carry out mulching with crop residue, straw or polythene to conserve soil moisture. Use temporary shade nets to protect the fruit plants from high temperatures.

Agromet advisories for likely impact of Thunderstorm / Gusty Winds

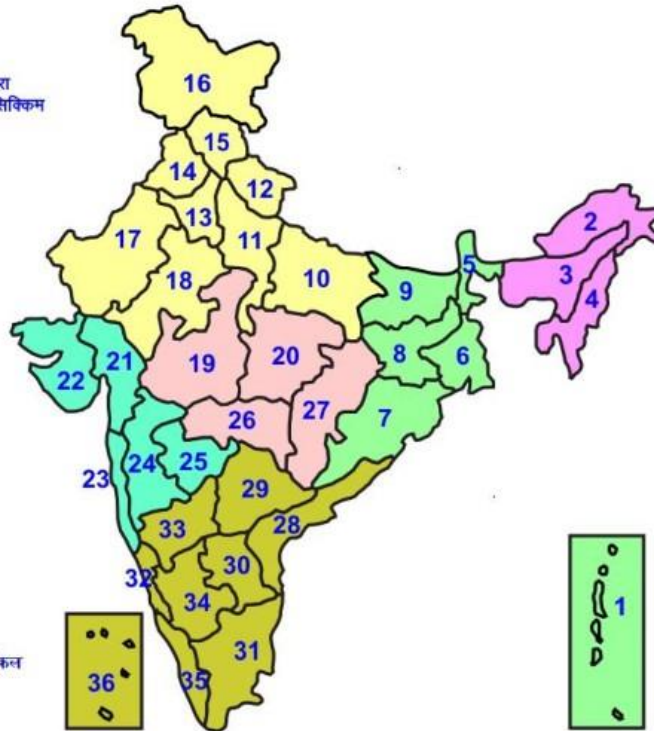
- ♦ Shift the harvested produce in safer places or cover the produce with tarpaulin sheets in the fields. Tie the harvested crops securely and cover them to minimize the risk of displacement from strong surface winds.
- ♦ Provide mechanical support to horticultural crops and staking or support to vegetables and young fruit plants / fruit-bearing plants to avoid lodging due to strong winds.

Livestock / Poultry / Fisheries

- ♦ Keep the animals inside the shed during heavy rainfall and provide them balanced feed.
- ♦ Store the feed and fodder in a safe place to prevent spoilage.
- ♦ In regions with high temperatures and heat wave conditions, provide clean, cool drinking water to animals, and cover the roofs of poultry sheds with grass to reduce the adverse effects of heat.
- ♦ Construct an outlet with proper netting around the ponds to drain excess water, thereby preventing fish from escaping in the event of overflow.

LEGENDS

- 1 अंडमान और निकोबार द्वीप समुद्र
- 2 अरुणाचल प्रदेश
- 3 असम और मेघालय
- 4 नागालैंड मनीपुर मीजोरम और त्रिपुरा
- 5 उप हिमालय पश्चिम बंगाल एवं सिक्किम
- 6 पश्चिम गंगेय बंगाल
- 7 ओडिसा
- 8 झारखंड
- 9 बिहार
- 10 पूर्वी उत्तर प्रदेश
- 11 पश्चिम उत्तर प्रदेश
- 12 उत्तराखंड
- 13 हरियाणा चंडिगढ़ एवं दिल्ली
- 14 पंजाब
- 15 हिमाचल प्रदेश
- 16 जम्मू एवं कश्मीर एवंम लद्दाख
- 17 पश्चिम राजस्थान
- 18 पूर्वी राजस्थान
- 19 पश्चिम मध्य प्रदेश
- 20 पूर्वी मध्य प्रदेश
- 21 गुजरात क्षेत्र
- 22 सौराष्ट्र एवं कच्छ
- 23 कोंकण एवं गोवा
- 24 मध्य महाराष्ट्र
- 25 मराठावाडा
- 26 विदर्भ
- 27 छत्तीसगढ़
- 28 तटीय आंध्र प्रदेश एवं यनम
- 29 तेलंगाना
- 30 रायलसीमा
- 31 तमिलनाडु, पुदुचेरी एवंम कराईकल
- 32 तटिय कर्नाटक
- 33 आंतरिक उत्तरी कर्नाटक
- 34 आंतरिक दक्षिणी कर्नाटक
- 35 केरल एवंम माहे
- 36 लक्षद्वीप



1. Andaman & Nicobar Islands
2. Arunachal Pradesh
3. Assam & Meghalaya
4. Nagaland, Manipur, Mizoram & Tripura
5. Sub-Himalayan West Bengal & Sikkim
6. Gangetic West Bengal
7. Orissa
8. Jharkhand
9. Bihar
10. East Uttar Pradesh
11. West Uttar Pradesh
12. Uttarakhand
13. Haryana, Chd & Delhi
14. Punjab
15. Himachal Pradesh
16. Jammu & Kashmir and Ladakh
17. West Rajasthan
18. East Rajasthan
19. West Madhya Pradesh
20. East Madhya Pradesh
21. Gujarat
22. Saurashtra
23. Konkan & Goa
24. Madhya Maharashtra
25. Marathawada
26. Vidharbha
27. Chhattisgarh
28. Coastal Andhra Pradesh & Yanam
29. Telangana
30. Rayalaseema
31. Tamilnadu, Puducherry & Karaikal
32. Coastal Karnataka
33. North Interior Karnataka
34. South Interior Karnataka
35. Kerala & Mahe
36. Lakshadweep

SPATIAL DISTRIBUTION (% of Stations reporting)

% Stations	Category	% Stations	Category
76-100	Widespread (WS/ Most Places)	26-50	Scattered (SCT/ A Few Places)
51-75	Fairly Widespread (FWS/ Many Places)	1-25	Isolated (ISOL)

Subdivision Colour

- NO WARNING
- WATCH (BE UPDATED)
- ALERT (BE PREPARED TO TAKE ACTION)
- WARNING (TAKE ACTION)

Probabilistic Forecast

Terms	Probability of Occurrence (%)
Unlikely	< 25
Likely	25 - 50
Very Likely	50 - 75
Most Likely	> 75

- Heavy Rain
- Thunderstorm & Lightning
- Strong surface winds
- Cold Wave
- Hot & Humid
- Very Heavy Rain
- Hailstrom
- Heat Wave
- Cold Day
- Extremely Heavy Rain
- Dust Storm
- Hot Day
- Ground Frost
- Heavy Snow
- Dust Raising Winds
- Warm Night
- FOG

*Red color warning does not mean "Red Alert" Red color warning means "Take Action"

Forecast and warning for any day is valid from 0830 hours IST of day till 0830 hours IST of next day

For more details kindly visit <https://mausam.imd.gov.in> or contact 011-2434-4599

(Service to the nation since 1875)

LEGENDS

WARNING

WARNING (TAKE ACTION)
ALERT (BE PREPARED)
WATCH (BE UPDATED)
NO WARNING (NO ACTION)

Probabilistic Forecast

Terms	Probability of Occurrence (%)
Unlikely	< 25
Likely	25 - 50
Very Likely	50 - 75
Most Likely	> 75



Heavy: 64.5 to 115.5 mm/cm *
Very Heavy: 115.6 to 204.4 mm/cm*
Extremely Heavy: > 204.4 mm/cm *



When maximum temperature of a station reaches $\geq 40^\circ\text{C}$ for plains and $\geq 30^\circ\text{C}$ for hilly regions
(a) Based on Departure from normal

Heat Wave: Maximum Temperature Departure from normal 4.5°C to 6.4°C .
Severe Heat Wave: Maximum Temperature Departure from normal $\geq 6.5^\circ\text{C}$

(b). Based on Actual maximum temperature

Heat Wave: When actual maximum temperature $\geq 45^\circ\text{C}$.
Severe Heat Wave: When actual maximum temperature $\geq 47^\circ\text{C}$

(c). Criteria for heat wave for coastal stations

When maximum temperature departure is $> 4.5^\circ\text{C}$ from normal. Heat Wave may be described provided maximum temperature $\geq 37^\circ\text{C}$



When maximum temperature remains 40°C

Warm Night: When minimum temperature departure 4.5°C to 6.4°C .
Severe Warm Night: When minimum temperature departure $> 6.4^\circ\text{C}$.



When minimum temperature of a station $\leq 10^\circ\text{C}$ for plains and $\leq 0^\circ\text{C}$ for hilly regions.
(a). Based on departure

Cold Wave: Minimum Temperature Departure from normal -4.5°C to -6.4°C .
Severe Cold Wave: Minimum Temperature Departure from normal $\leq -6.5^\circ\text{C}$

(b) Based on actual Minimum Temperature (for Plains only)

Cold Wave : When Minimum Temperature is $\leq 4.0^\circ\text{C}$
Severe Cold Wave: When Minimum Temperature is $\leq 2.0^\circ\text{C}$

(c) For Coastal Stations

When Minimum Temperature departure is $\leq -4.5^\circ\text{C}$ & actual Minimum Temperature is $\leq 15^\circ\text{C}$



When minimum temperature of a station $\leq 10^\circ\text{C}$ for plains and $\leq 0^\circ\text{C}$ for hilly regions
Based on departure

Cold Day: Maximum Temperature Departure from normal -4.5°C to -6.4°C .
Severe Cold Day: Maximum Temperature Departure from normal $\leq -6.5^\circ\text{C}$



Phenomenon of small droplets suspended in air and the horizontal visibility $< 1\text{km}$

Moderate Fog: When the visibility between 500-200 metres
Dense Fog: when the visibility between 50- 200 metres
Very Dense Fog: when the visibility < 50 metres



Sudden electrical discharges manifested by a flash of light (Lightning) and a sharp rumbling sound (thunder)



An ensemble of particles of dust or sand energetically lifted to great heights by a strong and turbulent wind.



Ice deposits on ground

Air temperature $\leq 4^\circ\text{C}$ (over Plains)



A strong wind that rises suddenly, lasts for atleast 1 minute.

Moderate: Wind speed 52-61 kmph
Severe: Wind speed 62-87 kmph
Very Severe: Wind speed > 87 kmph



Effect of various waves in the sea over specific area

Rough to very rough: Wind speed 41-62 kmph (22-33 knots) & Wave height 2.5-6 metre
High to very high: Wind speed 63-117 kmph (34-63 knots) & Wave height 6-14 metre
Phenomenal: Wind speed > 117 kmph (> 63 knots) & Wave height > 14 metre



Cyclonic Storm: Wind speed 62-87 kmph (34-47 knots)

Severe Cyclonic Storm: Wind speed 88-117 kmph (48-63 knots)

Very Severe Cyclonic Storm: Wind speed 118-165 kmph (64 - 89 knots)

Extremely Severe Cyclonic Storm: Wind speed 166-220 kmph (90 -119 knots)

Super Cyclone Storm: Wind speed > 220 kmph (> 119 knots)