

2025-07-02

Time of Issue: 08:00:00 hours IST  
(Morning)

## ALL INDIA WEATHER SUMMARY AND FORECAST BULLETIN

### Significant Weather Features

#### East & Central India:

- ♦ Isolated **heavy rainfall** over Madhya Pradesh, Vidarbha, Chhattisgarh during 02<sup>nd</sup>-07<sup>th</sup> July; Bihar, West Bengal & Sikkim, Jharkhand, Odisha during 02<sup>nd</sup>-05<sup>th</sup> July with **very heavy rainfall** over Madhya Pradesh on 02<sup>nd</sup> and during 05<sup>th</sup>-07<sup>th</sup>; Odisha on 02<sup>nd</sup> & 03<sup>rd</sup> July.
- ♦ Light/moderate rainfall at most/many places accompanied with **thunderstorm, lightning** likely over the region during next 7 days.

#### Northwest India:

- ♦ Isolated **heavy rainfall** likely over Himachal Pradesh, Uttarakhand, East Rajasthan during 02<sup>nd</sup>-07<sup>th</sup> July; Uttar Pradesh during 02<sup>nd</sup>-05<sup>th</sup> July and during 05<sup>th</sup>-07<sup>th</sup> July; West Rajasthan during 02<sup>nd</sup>-04<sup>th</sup> July with **very heavy rainfall over Himachal Pradesh on 02<sup>nd</sup> and during 05<sup>th</sup>-07<sup>th</sup>; Uttarakhand on 02<sup>nd</sup>; Punjab on 06<sup>th</sup> & 07<sup>th</sup>; Haryana on 06<sup>th</sup> & 07<sup>th</sup>; Uttar Pradesh on 02<sup>nd</sup> July and East Rajasthan during 02<sup>nd</sup>-04<sup>th</sup> July.**
- ♦ Light/moderate rainfall at most/many places accompanied with **thunderstorm, lightning & gusty winds speed reaching 30-40 kmph** likely over Northwest India during next 7 days.

#### West India:

- ♦ **Heavy to very heavy rainfall** at isolated places likely over Konkan & Goa, Ghat areas of Madhya Maharashtra, Gujarat region and heavy rainfall over Saurashtra & Kutch during next 7 days.

#### Northeast India:

- ♦ Light/moderate rainfall at most places accompanied with **thunderstorm, lightning and isolated heavy to very heavy rainfall** likely to continue over Northeast India during next 7 days.

#### South Peninsular India:

- ♦ Isolated **heavy rainfall** likely over Telangana on 02<sup>nd</sup> July; Kerala & Mahe during 02<sup>nd</sup>-05<sup>th</sup> July, Coastal & North Interior Karnataka during 02<sup>nd</sup>-07<sup>th</sup> July; South Interior Karnataka during 03<sup>rd</sup>-07<sup>th</sup> July.
- ♦ **Strong surface winds** (speed reaching 40-50 kmph) very likely over South Peninsular India during next 7 days.
- ♦ Light/moderate rainfall at many/some places over Kerala & Mahe, Lakshadweep, Coastal Karnataka; isolated to scattered rainfall accompanied with isolated **thunderstorm, lightning** over Coastal Andhra Pradesh & Yanam, Telangana, Rayalaseema during next 7 days.

**\*Red color warning does not mean "Red Alert" Red color warning means "Take Action"**

Forecast and warning for any day is valid from 0830 hours IST of day till 0830 hours IST of next day

For more details kindly visit <https://mausam.imd.gov.in> or contact 011-2434-4599

(Service to the nation since 1875)

### Main Weather Observations:

❖ **Rainfall distribution** (from 0830 hours IST to 1730 hours IST of yesterday): **at most places** over Sub-Himalayan West Bengal & Sikkim, Andaman & Nicobar Islands, Vidarbha, Uttarakhand, Nagaland, Manipur, Mizoram & Tripura, Coastal Andhra Pradesh & Yanam, East Madhya Pradesh, Telangana, South Interior Karnataka, Coastal Karnataka, Haryana Chandigarh & Delhi, East Uttar Pradesh, Jharkhand, Himachal Pradesh and Bihar; **at many places** over West Uttar Pradesh, Konkan & Goa, Madhya Maharashtra, Chhattisgarh, Assam & Meghalaya, Saurashtra & Kutch, Gujarat Region, Marathwada, East Rajasthan, West Rajasthan, Jammu & Kashmir and Ladakh, Odisha, Kerala & Mahe, Rayalaseema, North Interior Karnataka, Gangetic West Bengal, West Madhya Pradesh, Punjab and Lakshadweep; **Dry** over rest of the country.

❖ **Significant rainfall recorded (in cm)** (from 0830 hours IST to 1730 hours IST of yesterday): Marathwada: Parbhani (dist. Parbhani) 5; East Madhya Pradesh: Malanjhand (dist. Balurghat) 5, Sidhi (dist. Sidhi) 3, Mandla (dist. Mandla), Seoni (dist. Seoni) 2 Each; **Bihar**: Dehri (dist. Rohas) 4, Bhagalpur (dist. Bhagalpur) 2; Himachal Pradesh: Mandi (dist. Mandi) 4, Shimla- Airport (dist. Shimla) 3, Sundernagar (dist. Mandi), Shimla-city (dist. Shimla) 2 Each; Konkan & Goa : Dahanu (dist. Palghar) 4; **Punjab**: Patiala (dist. Patiala) 3, Chandigarh (dist. Chandigarh), Ludhiana (dist. Ludhiana) 2 Each; West Madhya Pradesh: Shahpur (dist. Shahpur) 3, Shivpuri (dist. Shivpuri), Betul (dist. Betul) 2 Each; **Jharkhand**: Chaibasa (dist. West Singhbhum) 2; East Uttar Pradesh: Lakhimpur Kheri (dist. Lakhimpur Kheri) 2; West Uttar Pradesh: Orai (dist. Jalaun) 2; Gangetic west Bengal: Berhampore (dist. Murshidabad) 2; Haryana Chandigarh & Delhi: Ambala (dist. Ambala) 2; **Chhattisgarh**: Bilaspur (dist. Bilaspur) 2.

❖ **Minimum Temperature Departures (as on 01-07-2025):** **markedly above normal(> 5.1°C)** at few places over Assam & Meghalaya; at isolated places over East Uttar Pradesh, West Uttar Pradesh, Himachal Pradesh, West Madhya Pradesh and Saurashtra & Kutch. **appreciably above normal(3.1°C to 5.0°C)** at many places over Jammu-KashmirLadakh-Gilgit-Baltistan-Muzaffarabad; at few places over East Madhya Pradesh; at isolated places over Nagaland, Manipur, Mizoram & Tripura, Sub Himalayan West Bengal & Sikkim, Odisha and Gujarat Region. **above normal(1.6°C to 3.0°C)** at few places over Bihar and Rayalaseema; at isolated places over West Rajasthan, Madhya Maharashtra, Coastal Andhra Pradesh & Yanam and Tamil Nadu, Puducherry & Karaikal. **near normal(-1.5°C to 1.5°C)** at many places over Uttarakhand and Kerala & Mahe; at most places over Andaman & Nicobar Islands, Arunachal Pradesh, Gangetic West Bengal, Jharkhand, East Rajasthan, Konkan & Goa, Marathwada, Vidarbha, Chhattisgarh, Coastal Karnataka, North Interior Karnataka, South Interior Karnataka and Lakshadweep; at few places over Haryana-Chandigarh-Delhi and Punjab; at isolated places over Telangana. **The lowest minimum temperature** of 17.8°C was reported at NARSINGHPUR (MADHYA PRADESH) over the Plains of India.

❖ **Maximum Temperature Departures (as on 01-07-2025):** **markedly above normal(> 5.1°C)** at few places over Jammu-KashmirLadakh-Gilgit-Baltistan-Muzaffarabad; at isolated places over Assam & Meghalaya. **appreciably above normal(3.1°C to 5.0°C)** at most places over Arunachal Pradesh; at isolated places over Sub Himalayan West Bengal & Sikkim. **above normal(1.6°C to 3.0°C)** at few places over Konkan & Goa, Coastal Karnataka and Lakshadweep; at isolated places over Bihar and Tamil Nadu, Puducherry & Karaikal. **near normal(-1.5°C to 1.5°C)** at many places over Andaman & Nicobar Islands, Gangetic West Bengal, Saurashtra & Kutch, North Interior Karnataka and Kerala & Mahe; at most places over Nagaland, Manipur, Mizoram & Tripura; at few places over Odisha, Uttarakhand, West Rajasthan, Gujarat Region, Madhya Maharashtra and Rayalaseema; at isolated places over East Uttar Pradesh, Himachal Pradesh and Chhattisgarh. **The highest maximum temperature** of 40.2°C was reported at MADURAI (A) (TAMIL NADU).

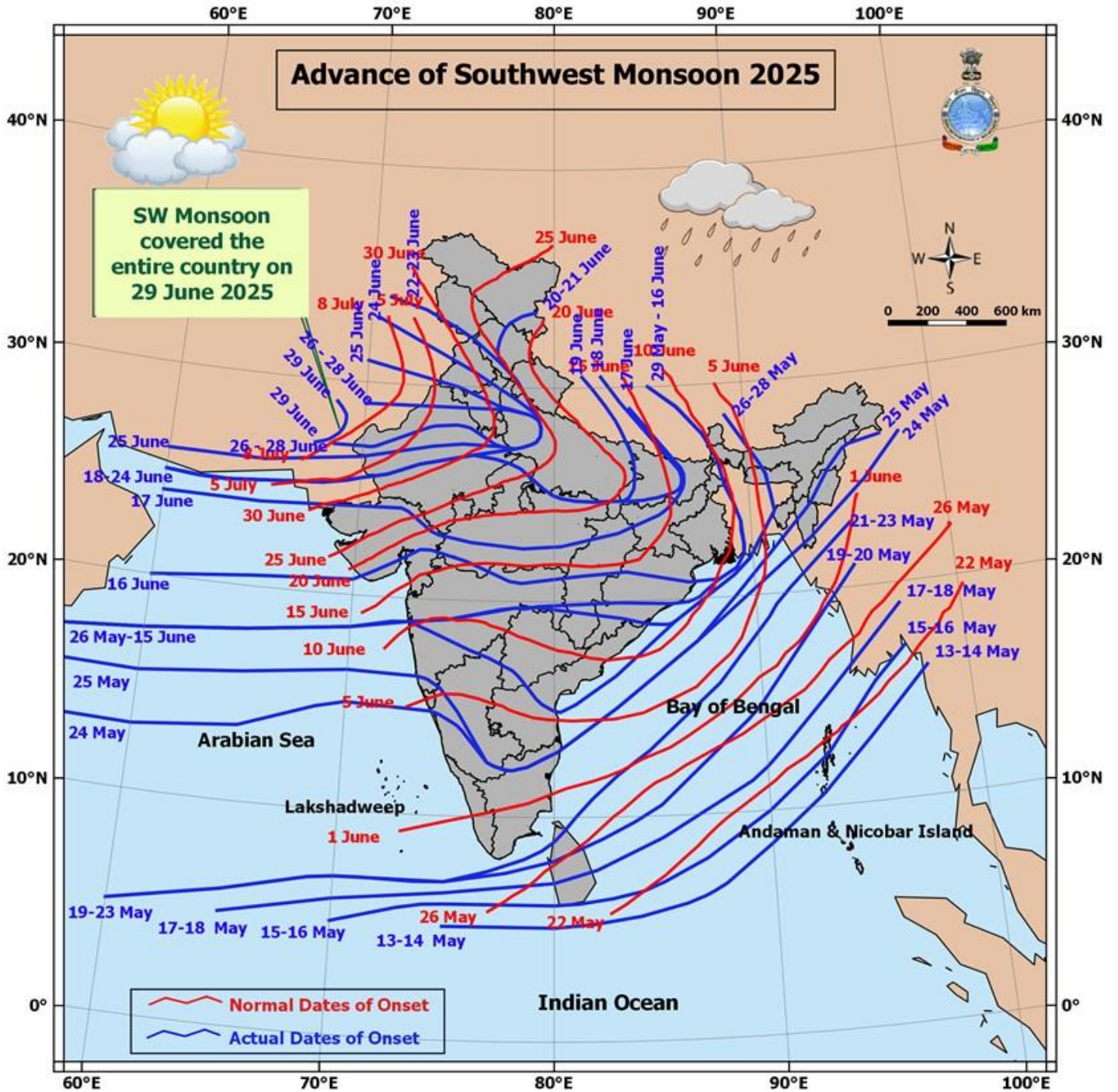


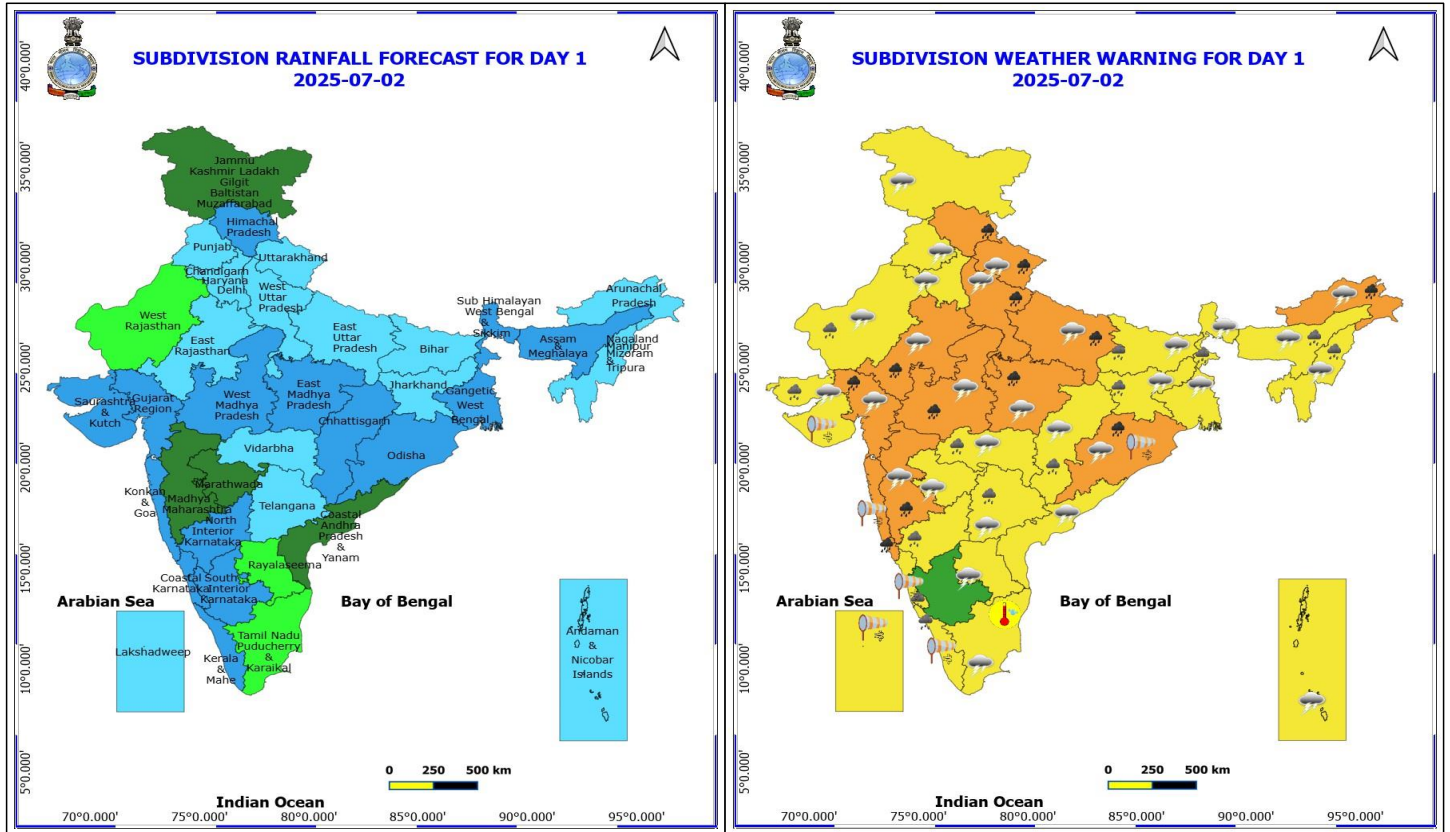
### Meteorological Analysis (Based on 0530 hours IST)

- ❖ The **low-pressure area** over southwest Jharkhand & neighbourhood has become less marked at 0530 hrs IST of today, the 02<sup>nd</sup> July 2025. However, the associated cyclonic circulation lies over south Jharkhand & neighbourhood and extends upto 4.6 km above mean sea level.
- ❖ The **monsoon trough** at mean sea level now passes through Bikaner, Ajmer, Guna, Satna, Daltonganj, Bakura and thence southeastwards to eastcentral Bay of Bengal.
- ❖ The **trough** from northeast Rajasthan now runs from southeast Rajasthan to the cyclonic circulation over south Jharkhand & neighbourhood across central Madhya Pradesh, north Chhattisgarh at 3.1 km above mean sea level.
- ❖ The upper air **cyclonic circulation** over east Bangladesh & neighbourhood extending upto 1.5 km above mean sea level persists.

### Weather Outlook for subsequent 3 days

- ♦ Scattered to fairly widespread rainfall very likely over central India, ghat area of western coast, eastern India & northwest India.
- ♦ Isolated to scattered rainfall very likely over the south peninsula India & western India.





## 2 July (Day 1)

- ❖ **Heavy to Very Heavy Rainfall** very likely at isolated places over Arunachal Pradesh, East Rajasthan, Gujarat Region, Himachal Pradesh, Konkan & Goa, Madhya Maharashtra, Madhya Pradesh, Odisha, Uttar Pradesh and Uttarakhand.
- ❖ **Heavy Rainfall** very likely at isolated places over Assam & Meghalaya, Bihar, Chhattisgarh, Coastal Karnataka, Jharkhand, Kerala & Mahe, Nagaland, Manipur, Mizoram and Tripura, North Interior Karnataka, Saurashtra & Kutch, Sub Himalayan West Bengal & Sikkim, Telangana, Vidarbha and West Rajasthan.
- ❖ **Thunderstorm accompanied with lightning & gusty winds(40-50kmph)** very likely at isolated places over Andaman & Nicobar Islands, Coastal Andhra Pradesh and Jammu-Kashmir-Ladakh-Gilgit-Baltistan-Muzaffarabad.
- ❖ **Thunderstorm accompanied with lightning & gusty winds(30-40kmph)** very likely at isolated places over Bihar, Gangetic West Bengal, Madhya Maharashtra, Marathwada, Odisha, Rajasthan and West Madhya Pradesh.
- ❖ **Thunderstorm accompanied with Lightning** very likely at isolated places over Arunachal Pradesh, Assam & Meghalaya, Chhattisgarh, East Madhya Pradesh, Gujarat State, Haryana, Chandigarh & Delhi, Jharkhand, Nagaland, Manipur, Mizoram and Tripura, Punjab, Rayalaseema, Sub Himalayan West Bengal & Sikkim, Tamil Nadu Puducherry & Karaikal, Telangana, Uttar Pradesh, Uttarakhand and Vidarbha.
- ❖ **Strong Surface Winds** very likely at isolated places over Coastal Karnataka, Kerala & Mahe, Konkan & Goa, Lakshadweep, Odisha and Saurashtra & Kutch.
- ❖ **Hot and Humid weather** very likely at isolated places over Tamil Nadu Puducherry & Karaikal.
- ❖ Squally wind speed reaching 45 kmph to 55 kmph gusting to 65 kmph is likely to prevail along and off Somalia, Oman & adjoining Yemen coasts, most parts of westcentral Arabian Sea & adjoining, many parts of eastcentral

\*Red color warning does not mean "Red Alert" Red color warning means "Take Action"

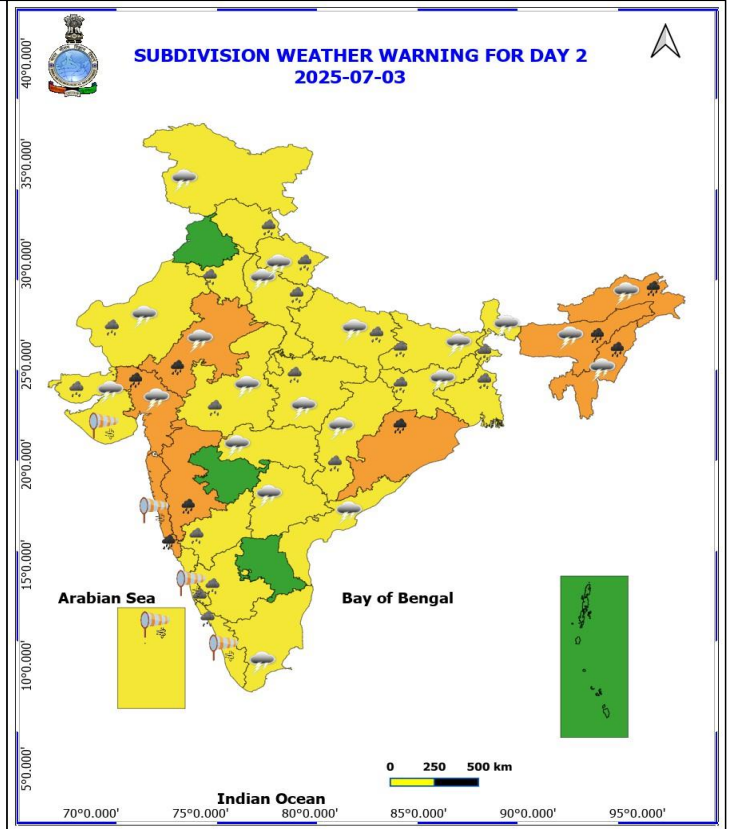
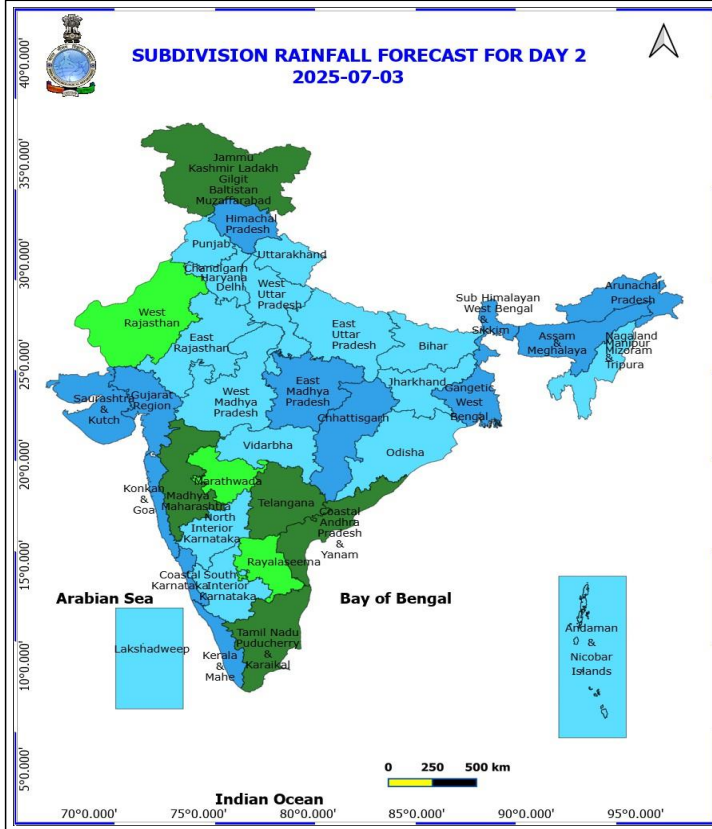
Forecast and warning for any day is valid from 0830 hours IST of day till 0830 hours IST of next day

For more details kindly visit <https://mausam.imd.gov.in> or contact 011-2434-4599

(Service to the nation since 1875)



Arabian Sea, southern parts of northwest Arabian Sea, northern parts of southwest Arabian Sea, over Gulf of Mannar; Squally weather with wind speed 40 - 50 kmph gusting to 60 kmph likely to prevail along and off Gujarat, Konkan Goa coasts, adjoining sea areas, over most parts of northeast Arabian Sea, over most parts of central Bay of Bengal, along and off north Andhra Pradesh coast, along and off Odisha, West Bengal coasts, over northwest Bay of Bengal.



### 3 July (Day 2)

- ❖ **Heavy to Very Heavy Rainfall** very likely at isolated places over Arunachal Pradesh, Assam & Meghalaya, East Rajasthan, Gujarat Region, Konkan & Goa, Madhya Maharashtra, Nagaland, Manipur, Mizoram and Tripura and Odisha.
- ❖ **Heavy Rainfall** very likely at isolated places over Bihar, Chhattisgarh, Coastal Karnataka, Haryana, Chandigarh & Delhi, Himachal Pradesh, Interior Karnataka, Jharkhand, Kerala & Mahe, Madhya Pradesh, Saurashtra & Kutch, Uttar Pradesh, Uttarakhand, West Bengal & Sikkim and West Rajasthan.
- ❖ **Thunderstorm accompanied with lightning & gusty winds(40-50kmph)** very likely at isolated places over Coastal Andhra Pradesh and Jammu-Kashmir-Ladakh-Gilgit-Baltistan-Muzaffarabad.
- ❖ **Thunderstorm accompanied with lightning & gusty winds(30-40kmph)** very likely at isolated places over Bihar and Rajasthan.
- ❖ **Thunderstorm accompanied with Lightning** very likely at isolated places over Arunachal Pradesh, Assam & Meghalaya, Chhattisgarh, Gujarat State, Jharkhand, Madhya Pradesh, Nagaland, Manipur, Mizoram and Tripura, Sub Himalayan West Bengal & Sikkim, Tamil Nadu Puducherry & Karaikal, Telangana, Uttar Pradesh, Uttarakhand and Vidarbha.
- ❖ **Strong Surface Winds** very likely at isolated places over Coastal Karnataka, Kerala & Mahe, Konkan & Goa, Lakshadweep and Saurashtra & Kutch.
- ❖ Squally wind speed reaching 45 kmph to 55 kmph gusting to 65 kmph is likely to prevail along and off Somalia, Oman & adjoining Yemen coasts, most parts of westcentral Arabian Sea & adjoining, many parts of eastcentral Arabian Sea, southern parts of northwest Arabian Sea, northern parts of southwest Arabian Sea, over Gulf of Mannar; Squally weather with wind speed 40 - 50 kmph gusting to 60 kmph likely to prevail along and off Gujarat,

**\*Red color warning does not mean "Red Alert" Red color warning means "Take Action"**

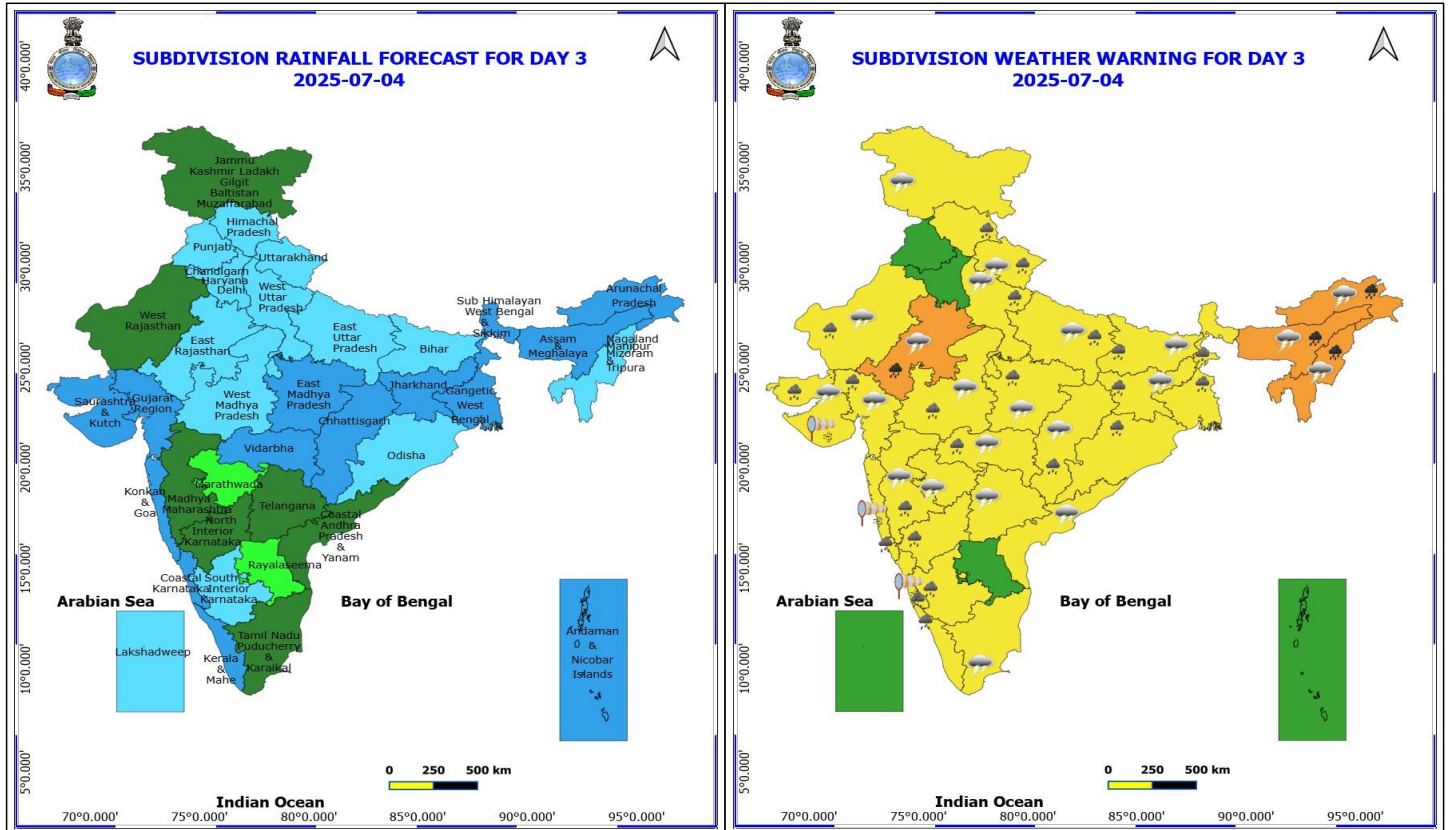
Forecast and warning for any day is valid from 0830 hours IST of day till 0830 hours IST of next day

For more details kindly visit <https://mausam.imd.gov.in> or contact 011-2434-4599

(Service to the nation since 1875)



Konkan Goa coasts, adjoining sea areas, over most parts of northeast Arabian Sea, over most parts of central Bay of Bengal & adjoining few parts of southwest Bay of Bengal, along and off north Andhra Pradesh coast.



#### 4 July (Day 3)

- ❖ **Heavy to Very Heavy Rainfall** very likely at isolated places over Arunachal Pradesh, Assam & Meghalaya, East Rajasthan and Nagaland, Manipur, Mizoram and Tripura.
- ❖ **Heavy Rainfall** very likely at isolated places over Bihar, Chhattisgarh, Coastal Karnataka, Gujarat State, Himachal Pradesh, Interior Karnataka, Jharkhand, Kerala & Mahe, Konkan & Goa, Madhya Maharashtra, Madhya Pradesh, Odisha, Uttar Pradesh, Uttarakhand, Vidarbha, West Bengal & Sikkim and West Rajasthan.
- ❖ **Thunderstorm accompanied with lightning & gusty winds(40-50kmph)** very likely at isolated places over Coastal Andhra Pradesh and Jammu-Kashmir-Ladakh-Gilgit-Baltistan-Muzaffarabad.
- ❖ **Thunderstorm accompanied with lightning & gusty winds(30-40kmph)** very likely at isolated places over Bihar, Madhya Maharashtra, Marathwada and Rajasthan.
- ❖ **Thunderstorm accompanied with Lightning** very likely at isolated places over Arunachal Pradesh, Assam & Meghalaya, Chhattisgarh, Gujarat State, Jharkhand, Madhya Pradesh, Nagaland, Manipur, Mizoram and Tripura, Tamil Nadu Puducherry & Karaikal, Telangana, Uttar Pradesh, Uttarakhand and Vidarbha.
- ❖ **Strong Surface Winds** very likely at isolated places over Coastal Karnataka, Konkan & Goa and Saurashtra & Kutch.
- ❖ Squally wind speed reaching 45 kmph to 55 kmph gusting to 65 kmph is likely to prevail along and off Somalia, Oman & adjoining Yemen coasts, most parts of westcentral Arabian Sea & adjoining, many parts of eastcentral Arabian Sea, southern parts of northwest Arabian Sea, northern parts of southwest Arabian Sea, over Gulf of Mannar; Squally weather with wind speed 40 - 50 kmph gusting to 60 kmph likely to prevail along and off Gujarat, Konkan Goa coasts, adjoining sea areas, over most parts of northeast Arabian Sea, over many parts of central Bay of Bengal & adjoining few parts of southeast Bay of Bengal, along and off north Andhra Pradesh coast.

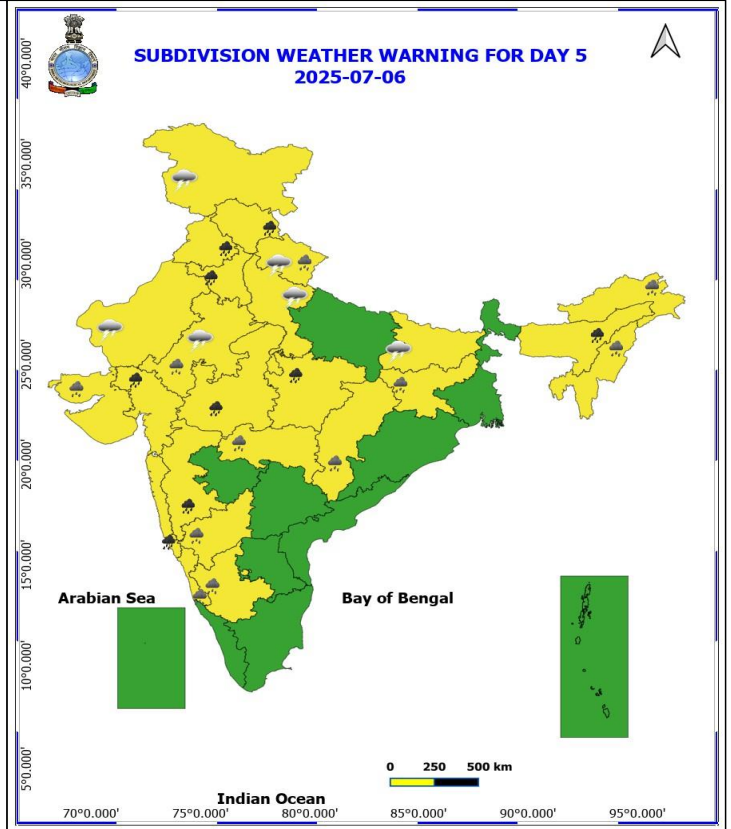
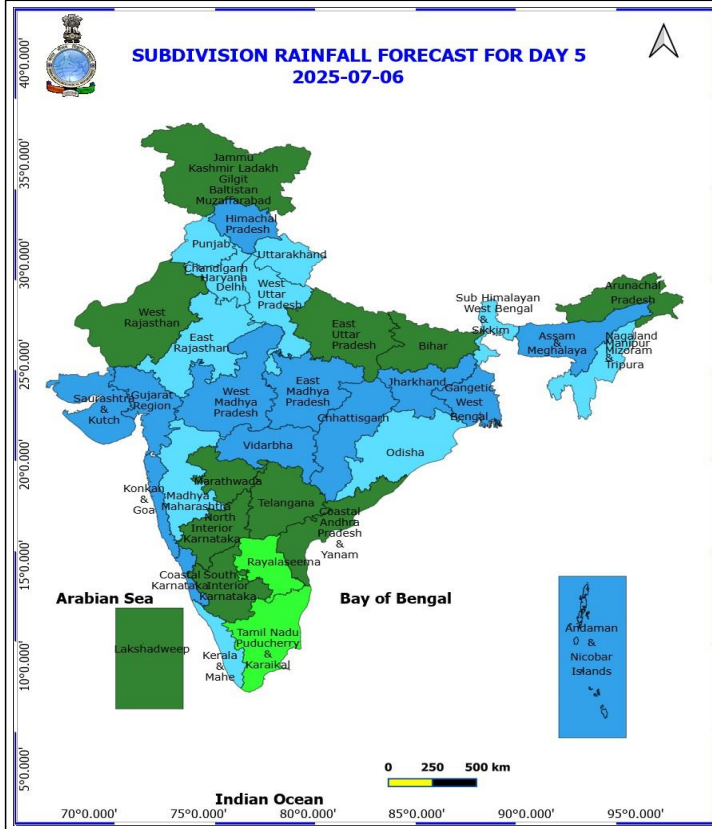
**\*Red color warning does not mean "Red Alert" Red color warning means "Take Action"**

Forecast and warning for any day is valid from 0830 hours IST of day till 0830 hours IST of next day

For more details kindly visit <https://mausam.imd.gov.in> or contact 011-2434-4599

(Service to the nation since 1875)

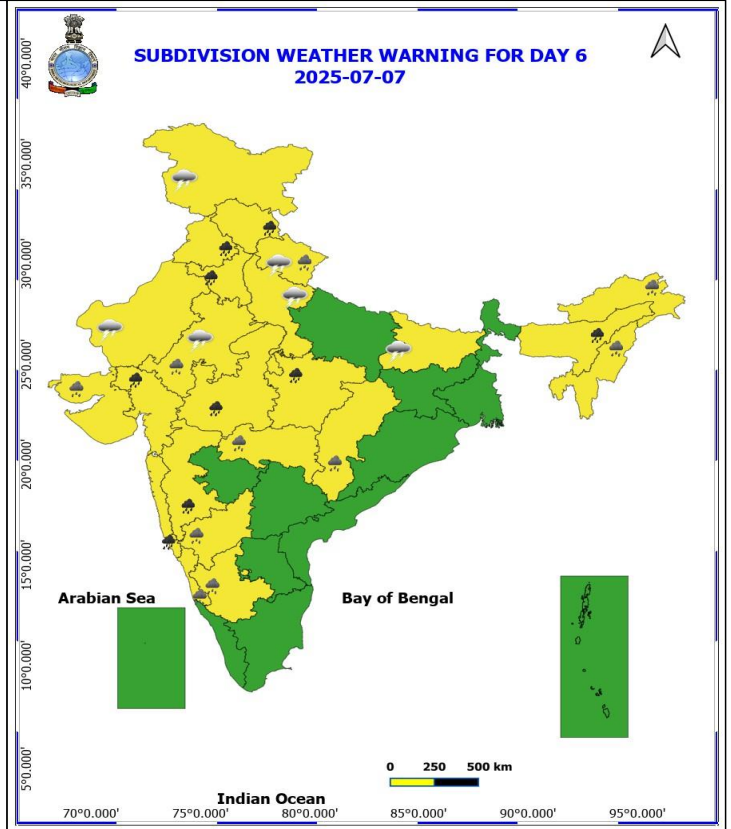
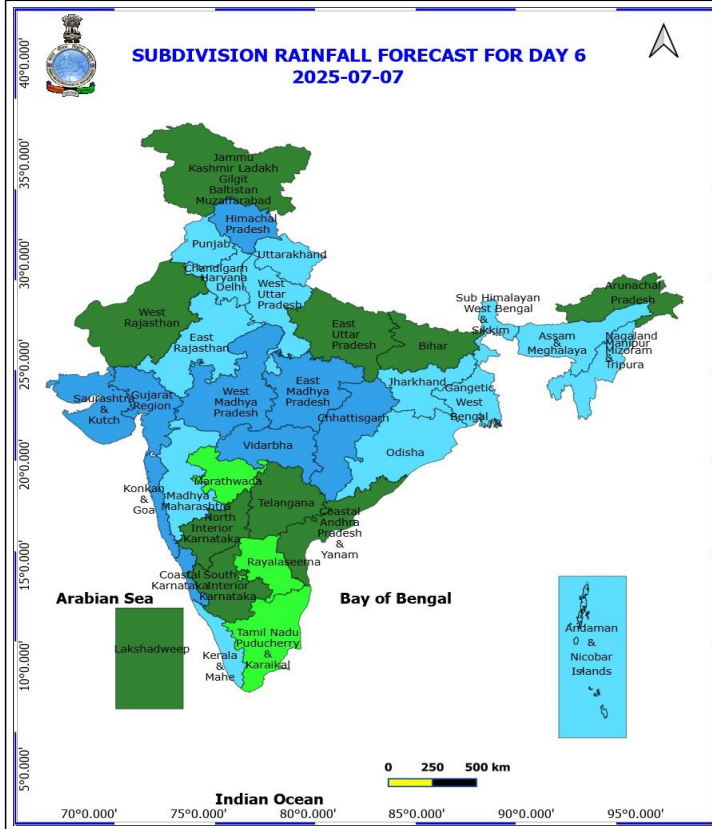




### 6 July (Day 5)

- ❖ **Heavy to Very Heavy Rainfall** likely at isolated places over Assam & Meghalaya, Gujarat Region, Haryana, Chandigarh & Delhi, Himachal Pradesh, Konkan & Goa, Madhya Maharashtra, Madhya Pradesh and Punjab.
- ❖ **Heavy Rainfall** likely at isolated places over Arunachal Pradesh, Chhattisgarh, Coastal Karnataka, East Rajasthan, Interior Karnataka, Jharkhand, Nagaland, Manipur, Mizoram and Tripura, Saurashtra & Kutch, Uttarakhand and Vidarbha.
- ❖ **Thunderstorm accompanied with lightning & gusty winds(30-40kmph)** likely at isolated places over Bihar, Jammu-Kashmir-Ladakh-Gilgit-Baltistan-Muzaffarabad and Rajasthan.
- ❖ **Thunderstorm accompanied with Lightning** likely at isolated places over Uttarakhand and West Uttar Pradesh.

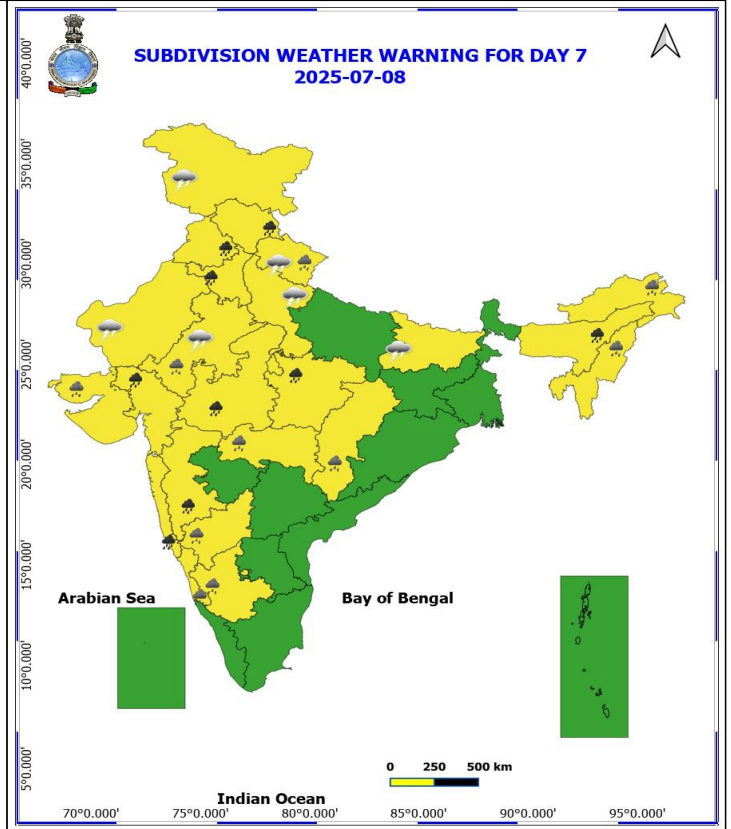
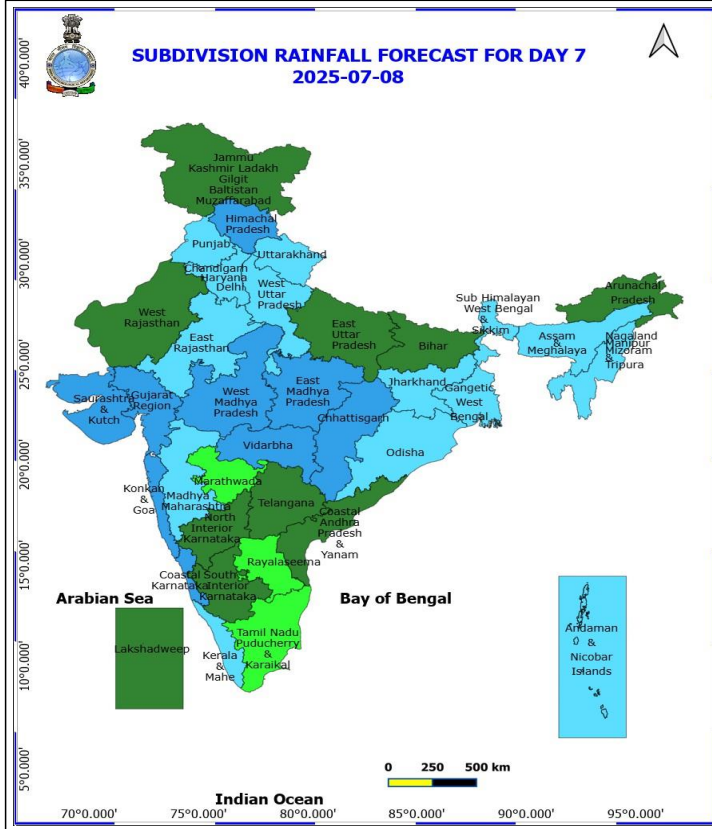
**No Fishermen Warning**



## 7 July (Day 6)

- ❖ **Heavy to Very Heavy Rainfall** likely at isolated places over Assam & Meghalaya, Gujarat Region, Haryana, Chandigarh & Delhi, Himachal Pradesh, Konkan & Goa, Madhya Maharashtra, Madhya Pradesh and Punjab.
- ❖ **Heavy Rainfall** likely at isolated places over Arunachal Pradesh, Chhattisgarh, Coastal Karnataka, East Rajasthan, Interior Karnataka, Nagaland, Manipur, Mizoram and Tripura, Saurashtra & Kutch, Uttarakhand and Vidarbha.
- ❖ **Thunderstorm accompanied with lightning & gusty winds(30-40kmph)** likely at isolated places over Bihar, Jammu-Kashmir-Ladakh-Gilgit-Baltistan-Muzaffarabad and Rajasthan.
- ❖ **Thunderstorm accompanied with Lightning** likely at isolated places over Uttarakhand and West Uttar Pradesh.

**No Fishermen Warning**



### 8 July (Day 7)

- ❖ **Heavy to Very Heavy Rainfall** likely at isolated places over Assam & Meghalaya, Gujarat Region, Haryana, Chandigarh & Delhi, Himachal Pradesh, Konkan & Goa, Madhya Maharashtra, Madhya Pradesh and Punjab.
- ❖ **Heavy Rainfall** likely at isolated places over Arunachal Pradesh, Chhattisgarh, Coastal Karnataka, East Rajasthan, Interior Karnataka, Nagaland, Manipur, Mizoram and Tripura, Saurashtra & Kutch, Uttarakhand and Vidarbha.
- ❖ **Thunderstorm accompanied with lightning & gusty winds(30-40kmph)** likely at isolated places over Bihar, Jammu-Kashmir-Ladakh-Gilgit-Baltistan-Muzaffarabad and Rajasthan.
- ❖ **Thunderstorm accompanied with Lightning** likely at isolated places over Uttarakhand and West Uttar Pradesh.

**No Fishermen Warning**



## Table-1

### 7 Days Rainfall Forecast

S.No.	Subdivision	2- Jul	3- Jul	4- Jul	5- Jul	6- Jul	7- Jul	8- Jul
		Day 1	Day 2	Day 3	Day 4	Day 5	Day 6	Day 7
1	ANDAMAN & NICOBAR ISLANDS	FWS	FWS	WS	WS	WS	FWS	FWS
2	ARUNACHAL PRADESH	FWS	WS	WS	FWS	SCT	SCT	SCT
3	ASSAM & MEHGHALAYA	WS	WS	WS	WS	WS	FWS	FWS
4	N. M. M. & T.	FWS	FWS	FWS	FWS	FWS	FWS	FWS
5	S.H. WEST BENGAL & SIKKIM	WS	WS	WS	WS	FWS	FWS	FWS
6	GANGETIC WEST BENGAL	WS	WS	WS	WS	WS	FWS	FWS
7	ODISHA	WS	FWS	FWS	FWS	FWS	FWS	FWS
8	JHARKHAND	FWS	FWS	WS	WS	WS	FWS	FWS
9	BIHAR	FWS	FWS	FWS	FWS	SCT	SCT	SCT
10	EAST UTTAR PRADESH	FWS	FWS	FWS	FWS	SCT	SCT	SCT
11	WEST UTTAR PRADESH	FWS	FWS	FWS	FWS	FWS	FWS	FWS
12	UTTARAKHAND	FWS	FWS	FWS	FWS	FWS	FWS	FWS
13	HARYANA, CHD & DELHI	FWS	FWS	FWS	FWS	FWS	FWS	FWS
14	PUNJAB	FWS	FWS	FWS	FWS	FWS	FWS	FWS
15	HIMACHAL PRADESH	WS	WS	FWS	WS	WS	WS	WS
16	JAMMU AND KASHMIR AND LADAKH	SCT	SCT	SCT	SCT	SCT	SCT	SCT
17	WEST RAJASTHAN	ISOL	ISOL	SCT	SCT	SCT	SCT	SCT
18	EAST RAJASTHAN	FWS	FWS	FWS	FWS	FWS	FWS	FWS
19	WEST MADHYA PRADESH	WS	FWS	FWS	WS	WS	WS	WS
20	EAST MADHYA PRADESH	WS	WS	WS	WS	WS	WS	WS
21	GUJRAT REGION	WS	WS	WS	WS	WS	WS	WS
22	SAURASHTRA & KUTCH	WS	WS	WS	WS	WS	WS	WS
23	KONKAN & GOA	WS	WS	WS	WS	WS	WS	WS
24	MADHYA MAHARASHTRA	SCT	SCT	SCT	FWS	FWS	FWS	FWS
25	MARATHWADA	SCT	ISOL	ISOL	SCT	SCT	ISOL	ISOL
26	VIDARBHA	FWS	FWS	WS	WS	WS	WS	WS
27	CHATTISGARH	WS	WS	WS	WS	WS	WS	WS
28	COASTAL ANDHRA PRADESH	SCT	SCT	SCT	SCT	SCT	SCT	SCT
29	TELANGANA	FWS	SCT	SCT	SCT	SCT	SCT	SCT
30	RAYALASEEMA	ISOL	ISOL	ISOL	ISOL	ISOL	ISOL	ISOL
31	TAMILNADU & PUDUCHERRY	ISOL	SCT	SCT	SCT	ISOL	ISOL	ISOL
32	COSTAL KARNATAKA	WS	WS	WS	WS	WS	WS	WS
33	NORTH INTERIOR KARNATAKA	WS	FWS	SCT	SCT	SCT	SCT	SCT
34	SOUTH INTERIOR KARNATAKA	WS	FWS	FWS	SCT	SCT	SCT	SCT
35	KERALA	WS	WS	WS	FWS	FWS	FWS	FWS
36	LAKSHDWEEP	FWS	FWS	FWS	FWS	SCT	SCT	SCT

Legend	Category	%Stations
WS	Widespread/Most Places	76-100
FWS	Fairly Widespread/Many Places	51-75
SCT	Scattered/ A Few Places	26-50
ISOL	Isolated Places	1-25
DRY	No Rain	0

\*Red color warning does not mean "Red Alert" Red color warning means "Take Action"  
Forecast and warning for any day is valid from 0830 hours IST of day till 0830 hours IST of next day  
For more details kindly visit <https://mausam.imd.gov.in> or contact 011-2434-4599

(Service to the nation since 1875)

Fig. 1: Maximum Temperatures Dated 2025-07-02

Fig. 2: Departure of Maximum Temp. Dated 2025-07-02

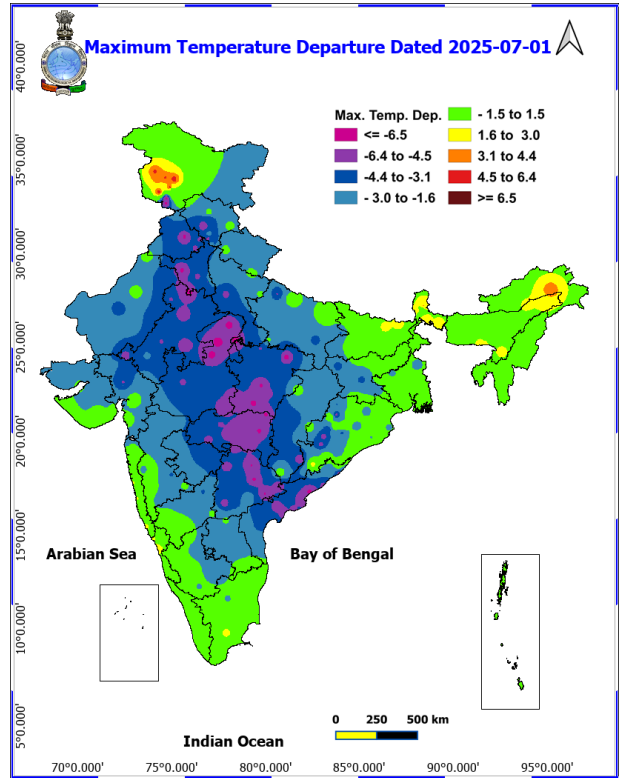
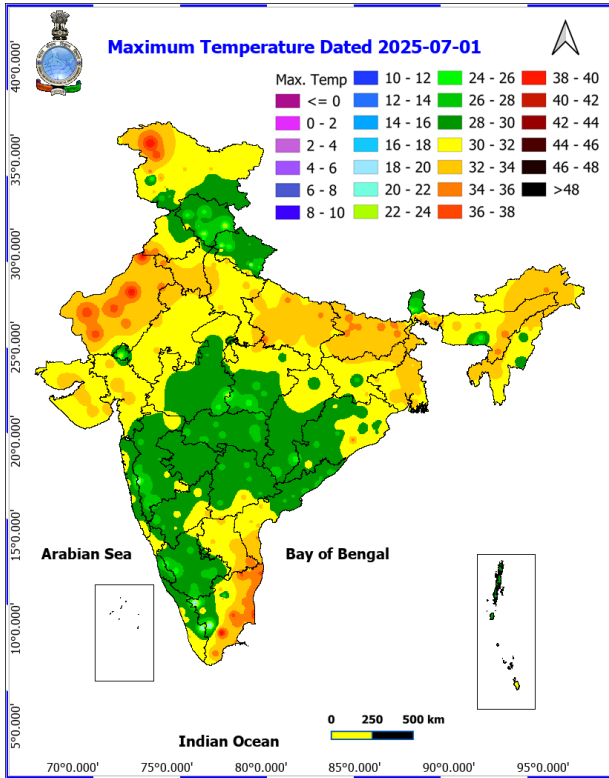
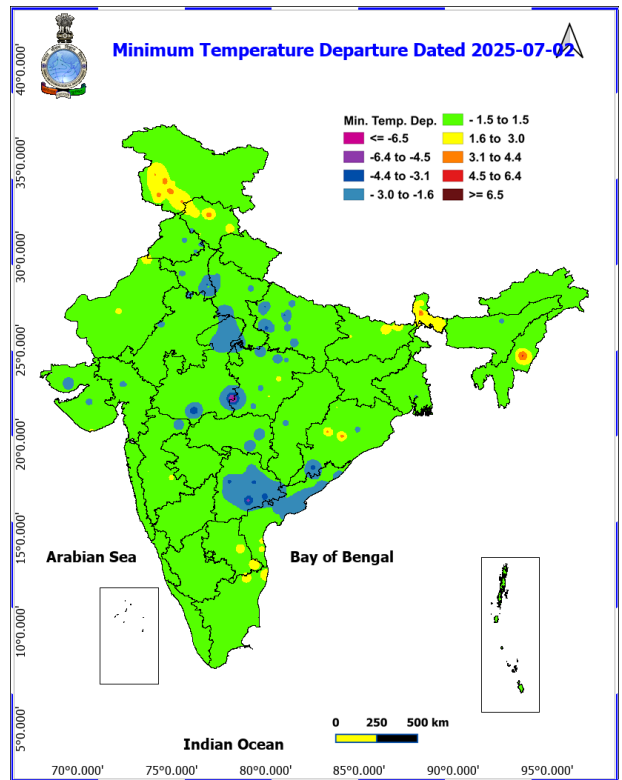
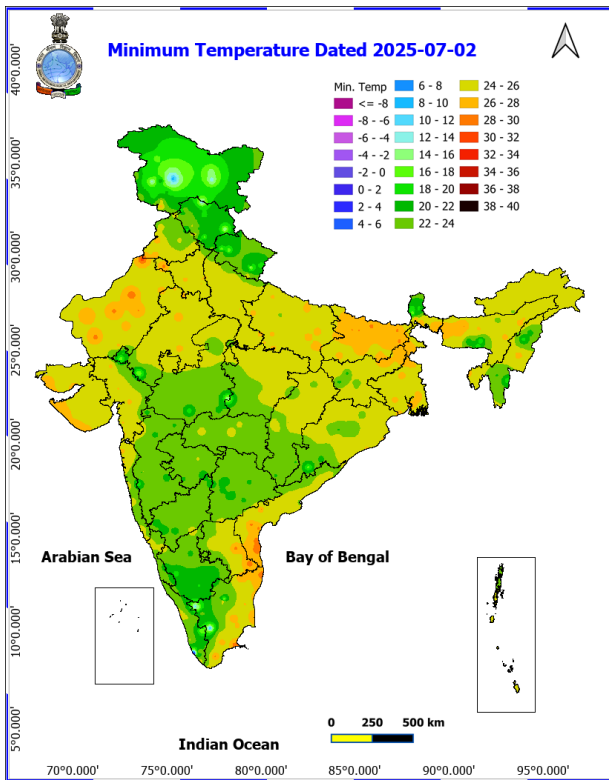


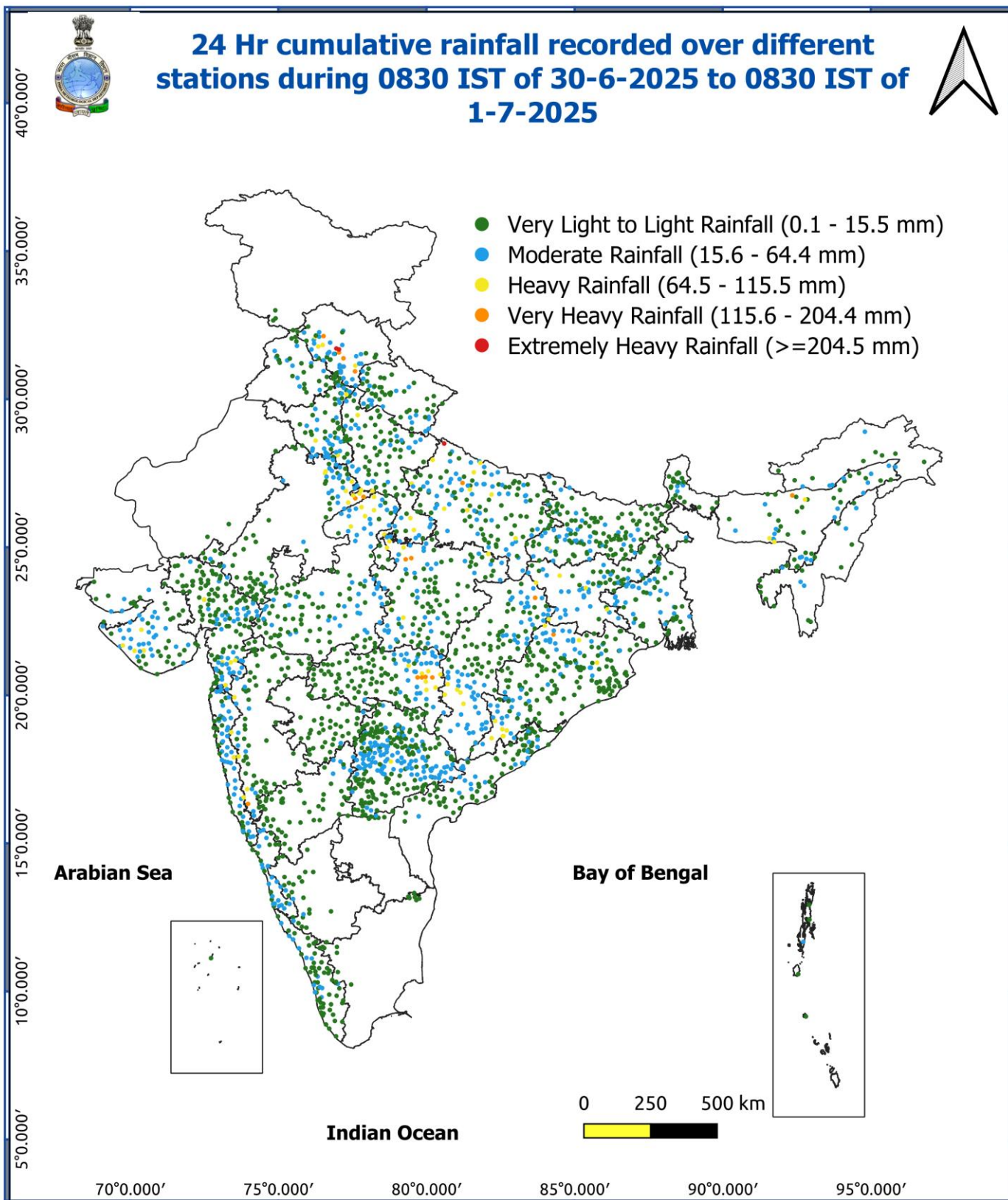
Fig. 3: Minimum Temperatures Dated 2025-07-02

Fig. 4: Departure of Minimum Temp. Dated 2025-07-02



**\*Red color warning does not mean "Red Alert" Red color warning means "Take Action"**  
Forecast and warning for any day is valid from 0830 hours IST of day till 0830 hours IST of next day  
For more details kindly visit <https://mausam.imd.gov.in> or contact 011-2434-4599

(Service to the nation since 1875)



**\*Red color warning does not mean "Red Alert" Red color warning means "Take Action"**  
Forecast and warning for any day is valid from 0830 hours IST of day till 0830 hours IST of next day  
For more details kindly visit <https://mausam.imd.gov.in> or contact 011-2434-4599

(Service to the nation since 1875)

**Flash Flood Warnings:**

**24 hours Outlook for the Flash Flood Risk (FFR) till 0530 IST of 03-07-2025 :**

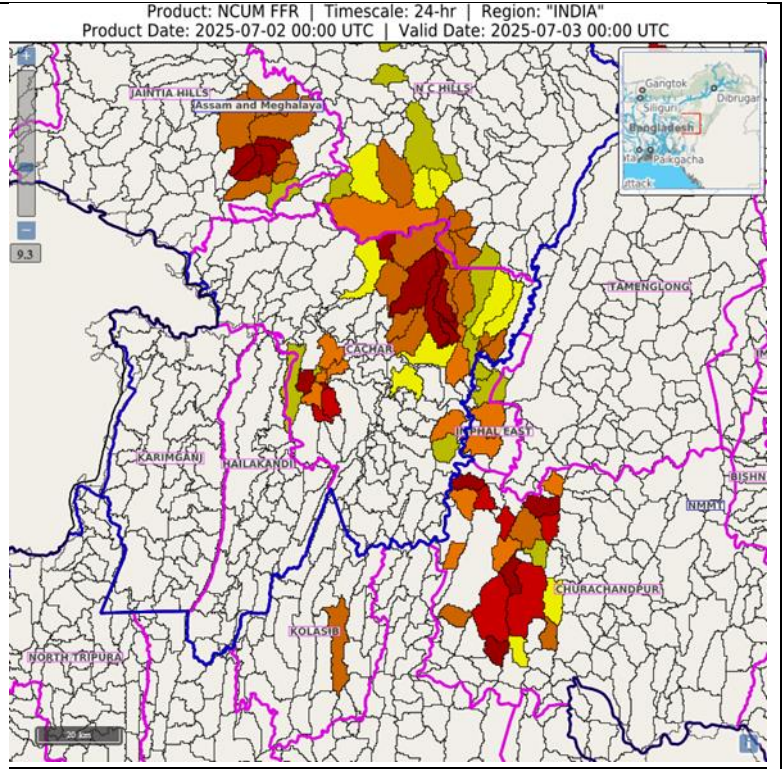
**Moderate to High flash flood risk** likely over few watersheds & neighbourhoods of following Met Sub-divisions during next 24 hours.

**Assam & Meghalaya** - Jaintia Hills, Cachar, Karimganj, N C Hills and Hailakandi districts.

**Nagaland Mizoram Manipur Tripura (NMMT)** –

**Manipur-** Churachandpur, Imphal West districts.

Surface runoff/ Inundation may occur at some fully saturated soils & low-lying areas over Area of Concern (AoC) as shown in map due to expected rainfall occurrence in next 24 hours.

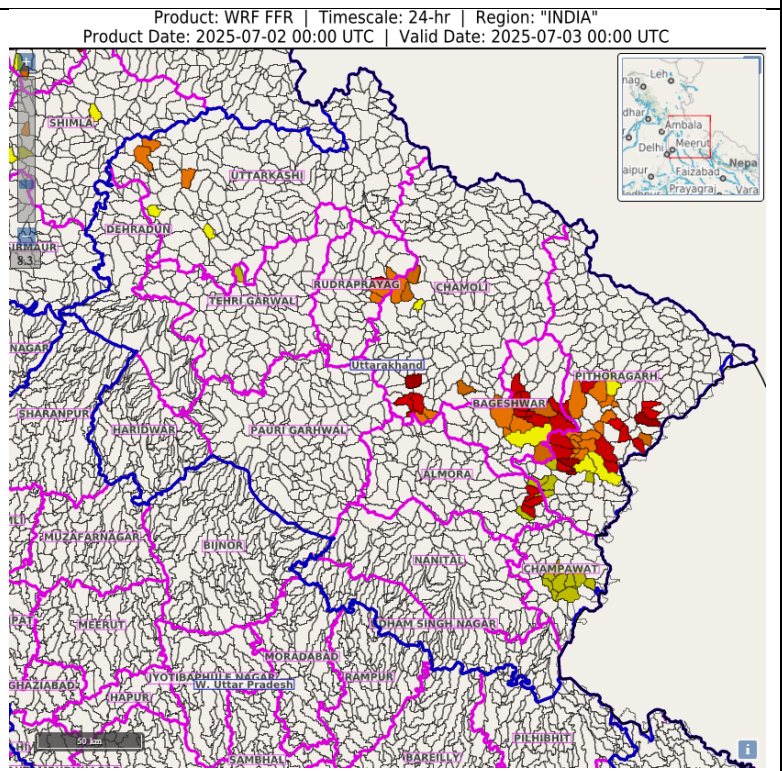


**24 hours Outlook for the Flash Flood Risk (FFR) till 0530 IST of 03-07-2025 :**

**Moderate to High flash flood risk** likely over few watersheds & neighbourhoods of following Met Sub-divisions during next 24 hours.

**Uttarakhand** - Bageshwar, Chamoli, Pithoragarh, Rudraprayag, Champawat, and Almora districts.

Surface runoff/ Inundation may occur at some fully saturated soils & low-lying areas over Area of Concern (AoC) as shown in map due to expected rainfall occurrence in next 24 hours.



**\*Red color warning does not mean "Red Alert" Red color warning means "Take Action"**

Forecast and warning for any day is valid from 0830 hours IST of day till 0830 hours IST of next day

For more details kindly visit <https://mausam.imd.gov.in> or contact 011-2434-4599

(Service to the nation since 1875)

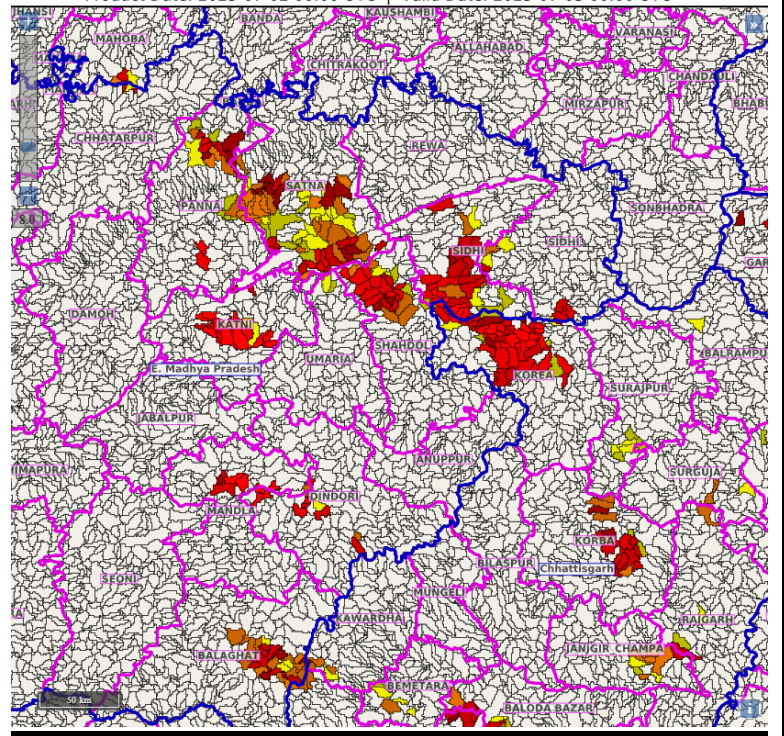
**24 hours Outlook for the Flash Flood Risk (FFR) till 0530 IST of 03-07-2025 :**

Product: NCUM FFR | Timescale: 24-hr | Region: "INDIA"  
Product Date: 2025-07-02 00:00 UTC | Valid Date: 2025-07-03 00:00 UTC

**Low to Moderate to High flash flood risk likely over few watersheds & neighbourhoods of following Met Sub-divisions during next 24 hours.**

**Chhattisgarh** –, Korea, Korba, districts.  
**East Madhya Pradesh** –Panna, Satna, Katni, Shahdol and Sidhi districts.

Surface runoff/ Inundation may occur at some fully saturated soils & low-lying areas over Area of Concern (AoC) as shown in map due to expected rainfall occurrence in next 24 hours.



### Impact & Action Suggested due to very heavy/extremely heavy rainfall:

- Very heavy rainfall** over Himachal Pradesh, Uttarakhand on 02<sup>nd</sup> and during 05<sup>th</sup>-07<sup>th</sup>; Punjab on 06<sup>th</sup> & 07<sup>th</sup>; Haryana on 06<sup>th</sup> & 07<sup>th</sup>; Uttar Pradesh on 02<sup>nd</sup> July and East Rajasthan during 02<sup>nd</sup>-04<sup>th</sup> July; Madhya Pradesh during 05<sup>th</sup>-07<sup>th</sup>; Odisha during 02<sup>nd</sup>-03<sup>rd</sup> July; Konkan & Goa, Madhya Maharashtra, Gujarat Region, Arunachal Pradesh, Assam & Meghalaya, Nagaland, Manipur, Mizoram & Tripura during 02<sup>nd</sup>-07<sup>th</sup> July.

#### Impact Expected

Localized Flooding of roads, water logging in low lying areas and closure of underpasses mainly in urban areas of the above region.

Occasional reduction in visibility due to heavy rainfall.

- ♦ Disruption of traffic in major cities due to water logging in roads leading to increased travel time.
- ♦ Minor damage to kutcha roads.
- ♦ Possibilities of damage to vulnerable structure.
- ♦ Localized Landslides/Mudslides/landslips/mudslips/landsinks/mudsinks.
- ♦ Damage to horticulture and standing crops in some areas due to inundation.
- ♦ It may lead to riverine flooding in some river catchments (for riverine flooding please visit Web page of CWC).
- ♦

#### Action Suggested

- ♦ Check for traffic congestion on your route before leaving for your destination.
- ♦ Follow any traffic advisories that are issued in this regard.
- ♦ Avoid going to areas that face the water logging problems often.
- ♦ Avoid staying in vulnerable structure.
- ♦
- ♦
- ♦

### Agromet advisories for various parts of the country

#### Agromet advisories for likely impact of Heavy / Heavy to Very Heavy / Extremely Heavy Rainfall

- ♦ In **Odisha**, postpone sowing of maize, green gram, papaya, banana and vegetable crops. Ensure proper drainage from already sown rice nurseries, fields of maize and vegetables to prevent waterlogging. Cover rice and vegetable nurseries with plastic sheets to prevent the washing away of seeds. Provide strong wooden support for papaya and banana plants to avoid lodging due to strong winds.
- ♦ **Jharkhand** – Postpone sowing of pigeon pea, finger millet and paddy nurseries. Make necessary arrangements to drain out excess water from already sown maize fields, rice and vegetable nurseries. Cover the vegetable nurseries with polythene sheets.
- ♦ In **West Madhya Pradesh**, postpone harvesting of maize. Postpone sowing of pearl millet, soybean, pigeon pea and paddy nurseries. Make necessary arrangements to drain out excess water from vegetables and orchards to avoid waterlogging. In **East Madhya Pradesh**, keep the harvested produce of maize, green gram and black gram in safe places. Ensure proper drainage in already sown / transplanted fields.
- ♦ In **Chhattisgarh**, ensure proper drainage in rice nurseries.
- ♦ In **Himachal Pradesh**, provide drainage in the fields of vegetables and fruit orchards. Strengthen the support for creepers and tall vegetable crops (tomato, capsicum etc.). Harvest matured fruits of plum, pear, stone fruit and keep in safe places to minimize losses due to heavy rains. Postpone sowing of maize and transplanting of rice. Drain out excess water from rice nurseries and already sown maize fields.
- ♦ In **Uttarakhand**, ensure proper drainage facilities in pigeon pea, groundnut, maize, sugarcane, barnyard millet, finger millet, already sown rice nurseries, kidney beans, blackgram, green gram, vegetable and orchards. Harvest matured vegetables (pumpkin, tomato, okra, chilli, French bean etc.) and fruits and store in safe place. Tie the sugarcane plants together to avoid lodging.
- ♦ **West Uttar Pradesh**, postpone sowing of maize. Drain out excess water from already sown maize, rice nurseries, vegetables, pigeon pea and sugarcane. Tie the sugarcane plants together to avoid lodging. In **East**

**\*Red color warning does not mean "Red Alert" Red color warning means "Take Action"**

**Forecast and warning for any day is valid from 0830 hours IST of day till 0830 hours IST of next day**

**For more details kindly visit <https://mausam.imd.gov.in> or contact 011-2434-4599**

**(Service to the nation since 1875)**



**Uttar Pradesh**, drain out excess water from vegetables, late sown rice, nurseries groundnut, green gram and maize.

- ♦ In **East Rajasthan**, harvest the matured vegetables such as okra and cucurbits and store them in safe place. Make arrangement for draining out excess water from the fields of groundnut and green gram.
- ♦ In **Punjab**, drain out excess water from already sown cotton, rice, vegetables and fruit crops.
- ♦ In **Haryana** - Make necessary arrangements to drain out excess water from cotton and pearl millet fields.
- ♦
- ♦ In **Gujarat** make necessary arrangements to drain out excess water in already sown rice nurseries, sugarcane fields, banana and mango plantations to prevent waterlogging. Provide support to sugarcane and banana to prevent lodging. In **Saurashtra & Kutch**, drain out excess rain water from vegetable nurseries and horticultural plantations. Undertake propping in sugarcanes with strong bamboo or tie the leaves together in a clump to protect against wind and heavy rain.
- ♦ In **Konkan & Goa**, make arrangements to drain out excess water from rice nurseries, fields of finger millet, groundnut and orchards to prevent waterlogging. In **ghat areas of Madhya Maharashtra**, drain out excess water from rice nurseries, vegetables and orchards to prevent waterlogging.
- ♦ In **Arunachal Pradesh**, to protect the maize crop from damage due to runoff and soil erosion, construct small bunds or contour barriers across the slope to reduce water flow and soil loss. Avoid fresh transplanting of rice in low-lying areas. Provide strong support to banana plants using bamboo or wooden stakes to prevent lodging or stem breakage.
- ♦ In **Assam**, keep the harvested produce of sesame, foxtail millet, *Boro* rice, banana and citrus at safer places. Ensure proper drainage in *Sali* rice nursery, maize and sugarcane fields, arecanut and coconut plantations to prevent waterlogging. In **Barak Valley Zone of Assam**, postpone nursery sowing of *Sali* rice.
- ♦ In **Meghalaya**, postpone nursery sowing of rice especially in valleys. Ensure proper drainage in the fields of maize, ginger, French bean, cowpea, vegetables and around rice nurseries to prevent waterlogging. Provide strong bamboo stakes or trellis support to cow pea, cucumber and bottle gourd to prevent vines from trailing on wet ground. Provide support to banana plant to prevent lodging.

### Livestock / Fishery

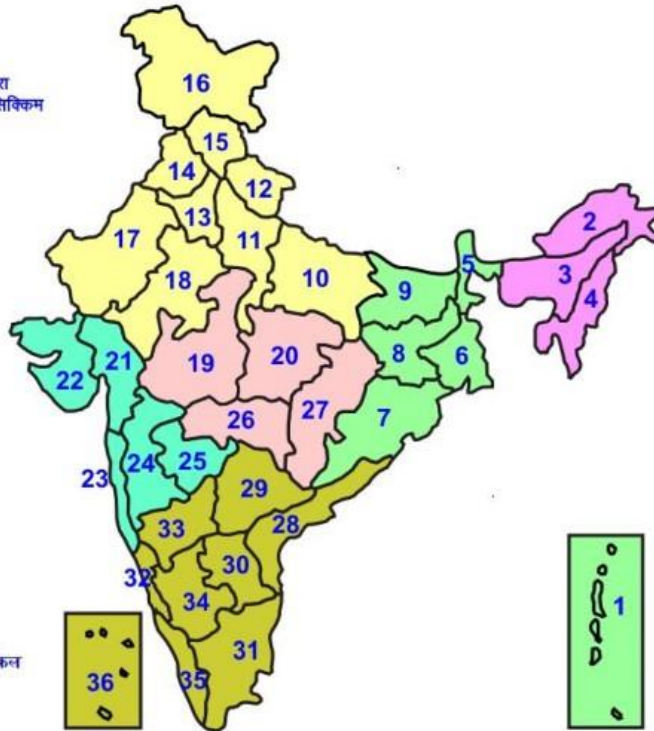
- ♦ Keep the animals inside the shed during heavy rainfall and provide them balanced feed.
- ♦ Store feed and fodder in a safe place to prevent spoilage.
- ♦ Construct an outlet with proper netting around the ponds to drain out excess water, thereby preventing fish from escaping in case of overflow.

### Agromet advisories for likely impact of Thunderstorm / Gusty Winds / Squally Winds

- ♦ Provide mechanical support to horticultural crops and staking or support to vegetables and young fruit plants / fruit-bearing plants to avoid lodging due to strong winds.

## LEGENDS

- 1 अंडमान और निकोबार द्वीप समुह
- 2 अरुणाचल प्रदेश
- 3 असम और मेघालय
- 4 नागालैंड मनीपुर मीजोरम और त्रिपुरा
- 5 उप हिमालय पश्चिम बंगाल एवं सिक्किम
- 6 पश्चिम बंगाल
- 7 ओडिसा
- 8 झारखंड
- 9 बिहार
- 10 पूर्वी उत्तर प्रदेश
- 11 पश्चिम उत्तर प्रदेश
- 12 उत्तराखंड
- 13 हरियाणा चंडिगढ़ एवं दिल्ली
- 14 पंजाब
- 15 हिमाचल प्रदेश
- 16 जम्मू एवं कश्मीर एवं लद्दाख
- 17 पश्चिम राजस्थान
- 18 पूर्वी राजस्थान
- 19 पश्चिम मध्य प्रदेश
- 20 पूर्वी मध्य प्रदेश
- 21 गुजरात क्षेत्र
- 22 सौराष्ट्र एवं कच्छ
- 23 कोंकण एवं गोवा
- 24 मध्य महाराष्ट्र
- 25 मराठावाडा
- 26 विदर्भ
- 27 छत्तीसगढ़
- 28 तटीय आंध्र प्रदेश एवं यनम
- 29 तेलंगाना
- 30 रायलसीमा
- 31 तमिलनाडु, पुदुचेरी एवं कराईकल
- 32 तटिय कर्नाटक
- 33 आंतरिक उत्तरी कर्नाटक
- 34 आंतरिक दक्षिणी कर्नाटक
- 35 केरल एवं माहे
- 36 लक्षद्वीप



1. Andaman & Nicobar Islands
2. Arunachal Pradesh
3. Assam & Meghalaya
4. Nagaland, Manipur, Mizoram & Tripura
5. Sub-Himalayan West Bengal & Sikkim
6. Gangetic West Bengal
7. Orissa
8. Jharkhand
9. Bihar
10. East Uttar Pradesh
11. West Uttar Pradesh
12. Uttarakhand
13. Haryana, Chd & Delhi
14. Punjab
15. Himachal Pradesh
16. Jammu & Kashmir and Ladakh
17. West Rajasthan
18. East Rajasthan
19. West Madhya Pradesh
20. East Madhya Pradesh
21. Gujarat
22. Saurashtra
23. Konkan & Goa
24. Madhya Maharashtra
25. Marathwada
26. Vidharbha
27. Chhattisgarh
28. Coastal Andhra Pradesh & Yanam
29. Telangana
30. Rayalaseema
31. Tamilnadu, Puducherry & Karaikal
32. Coastal Karnataka
33. North Interior Karnataka
34. South Interior Karnataka
35. Kerala & Mahe
36. Lakshadweep

## SPATIAL DISTRIBUTION (% of Stations reporting)

% Stations	Category	% Stations	Category
76-100	Widespread (WS/ Most Places)	26-50	Scattered (SCT/ A Few Places)
51-75	Fairly Widespread (FWS/ Many Places)	1-25	Isolated (ISOL)

### Subdivision Colour

- NO WARNING
- WATCH (BE UPDATED)
- ALERT (BE PREPARED TO TAKE ACTION)
- WARNING (TAKE ACTION)

### Probabilistic Forecast

Terms	Probability of Occurrence (%)
Unlikely	< 25
Likely	25 - 50
Very Likely	50 - 75
Most Likely	> 75

- |                          |                 |                      |                    |
|--------------------------|-----------------|----------------------|--------------------|
| Heavy Rain               | Very Heavy Rain | Extremely Heavy Rain | Heavy Snow         |
| Thunderstorm & Lightning | Hailstorm       | Dust Storm           | Dust Raising Winds |
| Strong surface winds     | Heat Wave       | Hot Day              | Warm Night         |
| Cold Wave                | Cold Day        | Ground Frost         | Fog                |
| Hot & Humid              |                 |                      |                    |

\*Red color warning does not mean "Red Alert" Red color warning means "Take Action"

Forecast and warning for any day is valid from 0830 hours IST of day till 0830 hours IST of next day

For more details kindly visit <https://mausam.imd.gov.in> or contact 011-2434-4599

(Service to the nation since 1875)

## LEGENDS

### WARNING

WARNING (TAKE ACTION)
ALERT (BE PREPARED)
WATCH (BE UPDATED)
NO WARNING (NO ACTION)

### Probabilistic Forecast

Terms	Probability of Occurrence (%)
Unlikely	< 25
Likely	25 - 50
Very Likely	50 - 75
Most Likely	> 75



Heavy: 64.5 to 115.5 mm/cm \*  
Very Heavy: 115.6 to 204.4 mm/cm \*  
Extremely Heavy: > 204.4 mm/cm \*



When maximum temperature of a station reaches  $\geq 40^{\circ}\text{C}$  for plains and  $\geq 30^{\circ}\text{C}$  for hilly regions  
(a) Based on Departure from normal

Heat Wave: Maximum Temperature Departure from normal  $4.5^{\circ}\text{C}$  to  $6.4^{\circ}\text{C}$ .  
Severe Heat Wave: Maximum Temperature Departure from normal  $\geq 6.5^{\circ}\text{C}$

(b). Based on Actual maximum temperature

Heat Wave: When actual maximum temperature  $\geq 45^{\circ}\text{C}$ .  
Severe Heat Wave: When actual maximum temperature  $\geq 47^{\circ}\text{C}$

(c). Criteria for heat wave for coastal stations

When maximum temperature departure is  $> 4.5^{\circ}\text{C}$  from normal. Heat Wave may be described provided maximum temperature  $\geq 37^{\circ}\text{C}$



When maximum temperature remains  $40^{\circ}\text{C}$

Warm Night: When minimum temperature departure  $4.5^{\circ}\text{C}$  to  $6.4^{\circ}\text{C}$ .  
Severe Warm Night: When minimum temperature departure  $> 6.4^{\circ}\text{C}$ .



When minimum temperature of a station  $\leq 10^{\circ}\text{C}$  for plains and  $\leq 0^{\circ}\text{C}$  for hilly regions.

(a). Based on departure

Cold Wave: Minimum Temperature Departure from normal  $-4.5^{\circ}\text{C}$  to  $-6.4^{\circ}\text{C}$ .  
Severe Cold Wave: Minimum Temperature Departure from normal  $\leq -6.5^{\circ}\text{C}$

(b) Based on actual Minimum Temperature (for Plains only)

Cold Wave : When Minimum Temperature is  $\leq 4.0^{\circ}\text{C}$   
Severe Cold Wave: When Minimum Temperature is  $\leq 2.0^{\circ}\text{C}$

(c) For Coastal Stations

When Minimum Temperature departure is  $\leq -4.5^{\circ}\text{C}$  & actual Minimum Temperature is  $\leq 15^{\circ}\text{C}$



When minimum temperature of a station  $\leq 10^{\circ}\text{C}$  for plains and  $\leq 0^{\circ}\text{C}$  for hilly regions  
Based on departure

Cold Day: Maximum Temperature Departure from normal  $-4.5^{\circ}\text{C}$  to  $-6.4^{\circ}\text{C}$ .  
Severe Cold Day: Maximum Temperature Departure from normal  $\leq -6.5^{\circ}\text{C}$



Phenomenon of small droplets suspended in air and the horizontal visibility  $< 1\text{km}$

Moderate Fog: When the visibility between 500-200 metres  
Dense Fog: when the visibility between 50- 200 metres  
Very Dense Fog: when the visibility  $< 50$  metres



Sudden electrical discharges manifested by a flash of light (Lightning) and a sharp rumbling sound (thunder)



An ensemble of particles of dust or sand energetically lifted to great heights by a strong and turbulent wind.



Ice deposits on ground

Air temperature  $\leq 4^{\circ}\text{C}$  ( over Plains)



A strong wind that rises suddenly, lasts for atleast 1 minute.

Moderate: Wind speed 52-61 kmph  
Severe: Wind speed 62-87 kmph  
Very Severe: Wind speed  $> 87$  kmph



Effect of various waves in the sea over specific area

Rough to very rough: Wind speed 41-62 kmph (22-33 knots) & Wave height 2.5-6 metre  
High to very high: Wind speed 63-117 kmph ( 34-63 knots) & Wave height 6-14 metre  
Phenomenal: Wind speed  $> 117$  kmph ( $> 63$  knots) & Wave height  $> 14$  metre



Cyclonic Storm: Wind speed 62-87 kmph (34-47 knots)  
Severe Cyclonic Storm: Wind speed 88-117 kmph (48-63 knots)  
Very Severe Cyclonic Storm: Wind speed 118-165 kmph (64 - 89 knots)  
Extremely Severe Cyclonic Storm: Wind speed 166-220 kmph (90 -119 knots)  
Super Cyclone Storm: Wind speed  $> 220$  kmph ( $> 119$  knots)

\*Red color warning does not mean "Red Alert" Red color warning means "Take Action"

Forecast and warning for any day is valid from 0830 hours IST of day till 0830 hours IST of next day

For more details kindly visit <https://mausam.imd.gov.in> or contact 011-2434-4599

(Service to the nation since 1875)