



Thursday, July 27, 2023
Time of Issue: 0800 hours IST
(MORNING)

ALL INDIA WEATHER SUMMARY AND FORECAST BULLETIN

Significant Weather Features

Significant Weather features:

- ❖ The Well Marked Low Pressure Area lies over south Odisha adjoining north Andhra Pradesh & neighbourhood.
- ❖ The Monsoon Trough is active and is south of its normal position. It is likely to shift gradually northwards during next 2-3 days.
- ❖ The shear zone runs roughly along Lat. 20° N in lower & middle tropospheric levels tilting southwards with height.
- ❖ A Western Disturbance is seen as a trough in middle tropospheric westerlies roughly along Long. 70°E to the north of 32°N.

Weather Forecast and Warning:

Northwest India: Light/Moderate fairly widespread to widespread rainfall with isolated **heavy rainfall** is very likely over Himachal Pradesh, Uttarakhand, Punjab, Haryana and West Uttar Pradesh during 27th-29th; over East Uttar Pradesh during 28th-31th; over Rajasthan and Jammu and Kashmir during 27th-28th July, 2023.

Isolated very heavy rainfall also likely over Himachal Pradesh & Uttarakhand on 27th & 28th and over Haryana & West Uttar Pradesh on 27th July, 2023.

Central India: Light/moderate fairly widespread to widespread rainfall with isolated **heavy rainfall** is very likely over the region during 27th-29th July. **Isolated extremely heavy falls also likely over Vidarbha on 27th July, 2023.**

Isolated very heavy rainfall also likely over Chhattisgarh on 27th & 28th July, 2023.

West India: Light/moderate fairly widespread to widespread rainfall with **isolated heavy to very heavy rainfall** very likely to continue over Konkan & Goa and ghat areas of Madhya Maharashtra during 27th-29th July and **isolated heavy rainfall** over Gujarat Region and Marathwada on 27th July, 2023.

Isolated extremely heavy rainfall very likely over Konkan & Goa and ghat areas of Madhya Maharashtra on 27th July, 2023.

South India: Light/moderate fairly widespread to widespread rainfall with **isolated heavy rainfall** very likely over Coastal Andhra Pradesh & Yanam, Telangana, Coastal Karnataka on 27th & 28th; South Interior Karnataka, Rayalaseema, Interior Karnataka on 27th July, 2023.

Isolated extremely heavy rainfall very likely over Telangana and Coastal Andhra Pradesh & Yanam on 27th July, 2023.

East India: Light/moderate fairly widespread to widespread rainfall with isolated **heavy rainfall** very likely over Odisha during 27th-31th; Sub-Himalaya West Bengal & Sikkim on 27th & 28th July and over Jharkhand & Bihar during 29th-31st July, 2023.

Northeast India: Light/moderate fairly widespread rainfall with **isolated heavy rainfall** very likely over the region during 27th-31st July.

Isolated very heavy rainfall likely over Arunachal Pradesh and Assam & Meghalaya on 28th July, 2023.

* Red color warning does not mean "Red Alert" Red color warning means "Take Action".

Forecast and Warning for any day is valid from 0830 hours IST of day till 0830 hours IST of next day For more details kindly visit <https://mausam.imd.gov.in> or contact : 011-2434-4599

(Service to the Nation since 1875)

Main Weather Observations

- ❖ **Rainfall/thundershowers observed** (from 0830 hours IST to 1730 hours IST of yesterday): **at most places** over Uttarakhand, Konkan & Goa, Odisha and Gangetic West Bengal; **at many places** over Saurashtra & Kutch and Jharkhand; **at a few places** over Himachal Pradesh, Haryana-Chandigarh-Delhi, West Rajasthan, Madhya Maharashtra, Vidarbha, Coastal Andhra Pradesh & Yanam, Assam & Meghalaya and Nagaland, Manipur, Mizoram & Tripura; **at isolated places** over East Rajasthan, Uttar Pradesh, Madhya Pradesh, Gujarat Region, Chhattisgarh, Sub-Himalaya West Bengal & Sikkim and Andaman & Nicobar Islands.
- ❖ **Significant rainfall recorded (in cm)** (from 0830 hours IST to 1730 hours IST of yesterday): Mandkola-17, (Vizianagaram)Govindapuram-13, (Srikakulam)Etcherla-11, Aligarh Obsy-11 Anandapuram-11, (Visakhapatnam)Town_Service Reservoir_ARG-11(Visakhapatnam)Zoo Premisses_ARG-10, Colaba-10, mandir-9, Valoi-9, Ratnagiri-8, Harnai-8, Santacruz-8, Byculla-8, CSMT-8, Bhimunnipattnam-8, Mahuva, Alibag, Mahabaleshwar-7; Sion-7, Yellandu-7; Ganganagar, Golaghat-6; Alluri Sitharama Raju Yetapaka_ARG KrishnaVijayawada Airport_ARG-6, Ram Chembur-5, (Srikakulam) Tamada Village -5, Eluru VictoriaTownHall_Tiruvuru Road_ARG-5, Alluri Sitharama Raju, Buttaigudem-5, Krishna Penumalli-4, Eluru Ramanakkapeta- 4, Guntur Mangalagiri-4, Guntur Athota-4, NTR Gunadala-4, Visakhapatnam heemunipatnam-4, Guntur Near_PoliceStation_ARG-4, Krishna Madduru-4, Krishna Municipal Water Work Compound_ARG-4, Guntur Thadepalle-4, Guntur R&B_Bungalow_ARG -4, Pilani, Goa-4, Jalesar-4, Buladshahar-4, Maant (Mathura)-3;.
- ❖ **Heavy Rainfall observed** (from 0830 hours IST to 1730 hours IST of yesterday): Heavy to very heavy rainfall at isolated places over Haryana; heavy rainfall at isolated places over Coastal Andhra Pradesh, Telangana and Konkan & Goa.
- ❖ **Thunderstorm observed** (from 0830 hours IST of yesterday to 0530 hours IST of today): at isolated places over Jammu-Kashmir-Ladakh-Gilgit-Baltistan-Muzaffarabad, Punjab, Haryana-Chandigarh, East Rajasthan, Madhya Pradesh, Jharkhand, Vidarbha, Vidarbha, Coastal Andhra Pradesh & Yanam and Sub-Himalaya West Bengal & Sikkim.
- ❖ **Minimum Temperature Departures (as on 26-07-2023):** Minimum temperatures were **above normal (1.6°C to 3.0°C)** at most places over East Madhya Pradesh, Chhattisgarh; at many places over West Madhya Pradesh, Bihar; at a few places over East Rajasthan, Vidarbha, East Uttar Pradesh, Odisha, Sub-Himalaya West Bengal & Sikkim. They were **below normal (-1.6°C to -3.0°C)** at most places over Haryana-Chandigarh-Delhi; at a few places over Punjab, Telangana, Rayalaseema, Coastal Andhra Pradesh & Yanam, Telangana and **near normal** over rest parts of the country. Yesterday, **the lowest minimum temperature of 18.4°C** was reported at **Nandyal (Rayalaseema)** over the plains of the country.
- ❖ **Maximum Temperature Departures (as on 26-07-2023):** Maximum temperatures were **appreciably above normal (3.1°C to 5.0°C)** at most places over East Madhya Pradesh; at many places over Chhattisgarh; at a few places over West Madhya Pradesh, East Uttar Pradesh, Bihar and Vidarbha; **above normal (1.6°C to 3.0°C)** at many places over Gujarat Region and Assam & Meghalaya; at a few places over East Rajasthan, Odisha and Sub-Himalaya West Bengal & Sikkim and at isolated places over Gangetic West Bengal. They were **appreciably below normal (-3.1°C to -5.0°C)** at a few place over Haryana-Chandigarh-Delhi and Coastal Andhra Pradesh & Yanam and at isolated places over West Rajasthan; **below normal (-1.6°C to -3.0°C)** at most places over Konkan & Goa; at many places over Uttarakhand, Punjab and at isolated places over West Uttar Pradesh, Saurashtra & Kutch and Madhya Maharashtra and **near normal** over rest parts of the country. Yesterday, **the highest maximum temperature of 37.4°C** was reported at **Phalodi (West Rajasthan) and Khajuraho (East Madhya Pradesh)**.



Meteorological Analysis (Based on 0530 hours IST)

- ❖ The **Well Marked Low Pressure Area** over Westcentral and adjoining areas of Northwest Bay of Bengal & north Andhra Pradesh-south Odisha coasts now lies over south Odisha adjoining north Andhra Pradesh & neighbourhood with the associated cyclonic circulation extending upto 7.6 km above mean sea level.
- ❖ The Monsoon Trough at mean sea level now passes through Jaisalmer, Kota, Guna, Jabalpur, Raipur, centre of **Well Marked Low Pressure Area** over south Odisha adjoining north Andhra Pradesh & neighbourhood and thence east-southeastwards to Eastcentral Bay of Bengal and extends upto 1.5 km above mean sea level.
- ❖ The cyclonic circulation over northwest Madhya Pradesh & neighbourhood extending upto 3.1 km above mean sea level persists.
- ❖ The shear zone roughly along Lat. 20°N between 3.1 km & 7.6 km above mean sea level tilting southwards with heights persists.
- ❖ The cyclonic circulation over West Rajasthan & neighbourhood extending upto 3.1 km above mean sea level persists.
- ❖ The cyclonic circulation over Jammu & neighbourhood at 1.5 km above mean sea level persists.
- ❖ The Western Disturbance as a trough in middle tropospheric westerlies with its axis at 5.8 km above mean sea level roughly along Long. 70°E to the north of 32°N persists.

Weather Forecast for next 5 days (Upto 0830 hours IST of 01st August, 2023)

- ❖ Meteorological sub-division wise detailed 5 days rainfall forecast is given in Table-1.
- ❖ No significant change in maximum temperatures likely over most parts of country during next 5 days.

Weather Outlook for subsequent 2 days

- ❖ Fairly widespread to widespread light/moderate rainfall likely over west coast, northwest, east and central India and isolated to scattered rainfall over rest parts of the country.



Table-1

7 Days Rainfall Forecast								
S. No.	Subdivision	27-Jul	28-Jul	29-Jul	30-Jul	31-Jul	1-Aug	2-Aug
		Day 1	Day 2	Day 3	Day 4	Day 5	Day 6	Day 7
1	ANDAMAN & NICOBAR ISLANDS	FWS	FWS	FWS	FWS	FWS	FWS	FWS
2	ARUNACHAL PRADESH	WS	WS	FWS	FWS	FWS	FWS	FWS
3	ASSAM & MEGHALAYA	WS	WS	FWS	FWS	FWS	FWS	FWS
4	NAGALAND, MANIPUR, MIZORAM & TRIPURA	FWS	WS	WS	WS	WS	WS	FWS
5	SUB-HIMALAYAN WEST BENGAL & SIKKIM	WS	WS	FWS	FWS	FWS	FWS	FWS
6	GANGETIC WEST BENGAL	FWS	FWS	WS	WS	WS	WS	WS
7	ODISHA	FWS	FWS	WS	WS	WS	WS	FWS
8	JHARKHAND	SCT	FWS	FWS	WS	WS	WS	WS
9	BIHAR	ISOL	SCT	FWS	FWS	FWS	FWS	FWS
10	EAST UTTAR PRADESH	SCT	FWS	WS	WS	FWS	FWS	FWS
11	WEST UTTAR PRADESH	WS	WS	WS	FWS	FWS	FWS	FWS
12	UTTARAKHAND	WS	WS	WS	WS	FWS	FWS	FWS
13	HARYANA CHANDIGARH & DELHI	FWS	FWS	FWS	FWS	FWS	FWS	SCT
14	PUNJAB	WS	WS	FWS	FWS	FWS	FWS	SCT
15	HIMACHAL PRADESH	WS	WS	FWS	SCT	SCT	SCT	SCT
16	JAMMU & KASHMIR AND LADAKH	FWS	FWS	FWS	SCT	ISOL	ISOL	ISOL
17	WEST RAJASTHAN	SCT	SCT	ISOL	ISOL	ISOL	ISOL	ISOL
18	EAST RAJASTHAN	FWS	FWS	SCT	ISOL	SCT	SCT	SCT
19	WEST MADHYA PRADESH	FWS	SCT	SCT	SCT	SCT	SCT	SCT
20	EAST MADHYA PRADESH	WS	WS	FWS	FWS	FWS	FWS	WS
21	GUJARAT REGION	SCT	SCT	SCT	SCT	ISOL	ISOL	SCT
22	SAURASHTRA & KUTCH	SCT	ISOL	ISOL	ISOL	ISOL	ISOL	ISOL
23	KONKAN & GOA	WS	WS	WS	WS	WS	WS	WS
24	MADHYA MAHARASHTRA	WS	FWS	FWS	FWS	FWS	FWS	FWS
25	MARATHAWADA	WS	SCT	SCT	SCT	SCT	SCT	SCT
26	VIDARBHA	WS	WS	FWS	FWS	SCT	SCT	SCT
27	CHHATTISGARH	WS	FWS	FWS	SCT	SCT	SCT	SCT
28	COASTAL ANDHRA PRADESH & YANAM	FWS	SCT	SCT	WS	WS	WS	SCT
29	TELANGANA	WS	FWS	FWS	SCT	SCT	SCT	ISOL
30	RAYALASEEMA	FWS	ISOL	ISOL	ISOL	ISOL	ISOL	ISOL
31	TAMILNADU PUDUCHERRY & KARAIKAL	ISOL	ISOL	ISOL	ISOL	ISOL	ISOL	ISOL
32	COASTAL KARNATAKA	WS	WS	WS	WS	WS	WS	WS
33	NORTH INTERIOR KARNATAKA	WS	FWS	FWS	FWS	FWS	FWS	SCT
34	SOUTH INTERIOR KARNATAKA	FWS	FWS	FWS	SCT	SCT	SCT	SCT
35	KERALA & MAHE	FWS	FWS	FWS	SCT	SCT	SCT	SCT
36	LAKSHADWEEP	FWS	FWS	FWS	SCT	SCT	SCT	SCT

Legend	Category	% Stations
WS	Widespread/Most Places	76-100
FWS	Fairly Widespread/Many places	51-75
SCT	Scattered/ A Few Places	26-50
ISOL	Isolated Places	1-25
DRY	No Rain	0

Fig. 1: Maximum Temperatures Dated 26.07.2023

Fig. 2: Departure of Maximum Temp. Dated 26.07.2023

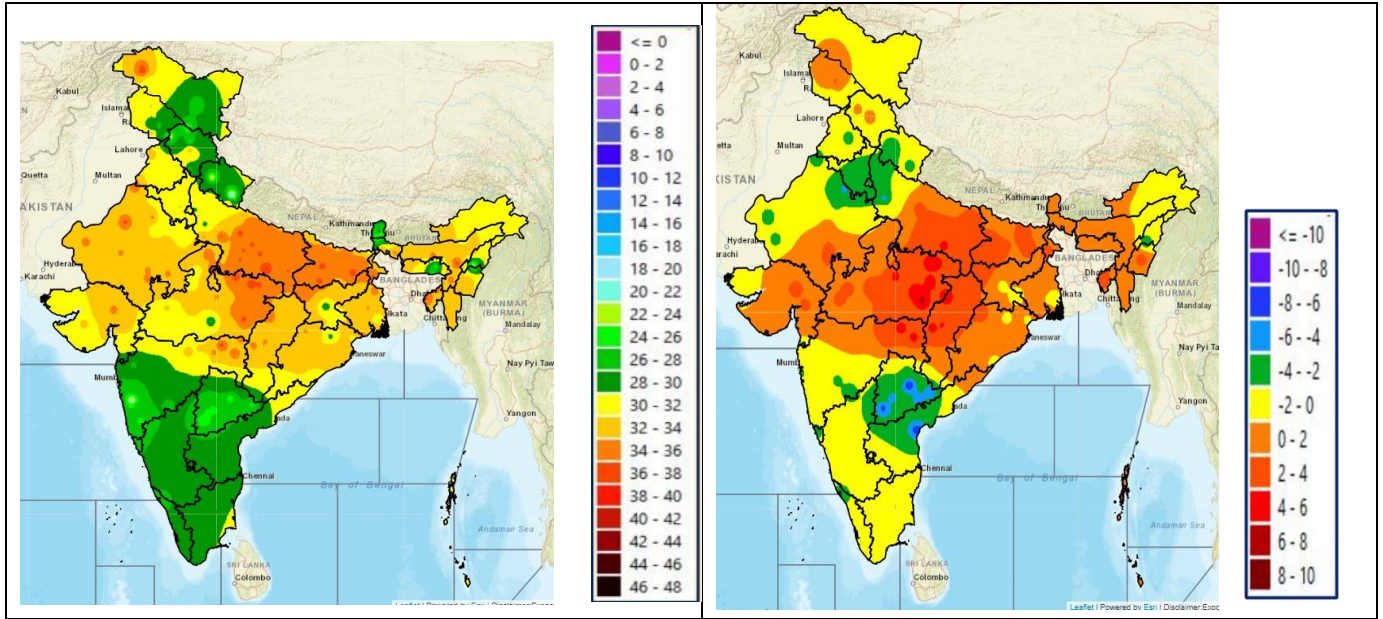
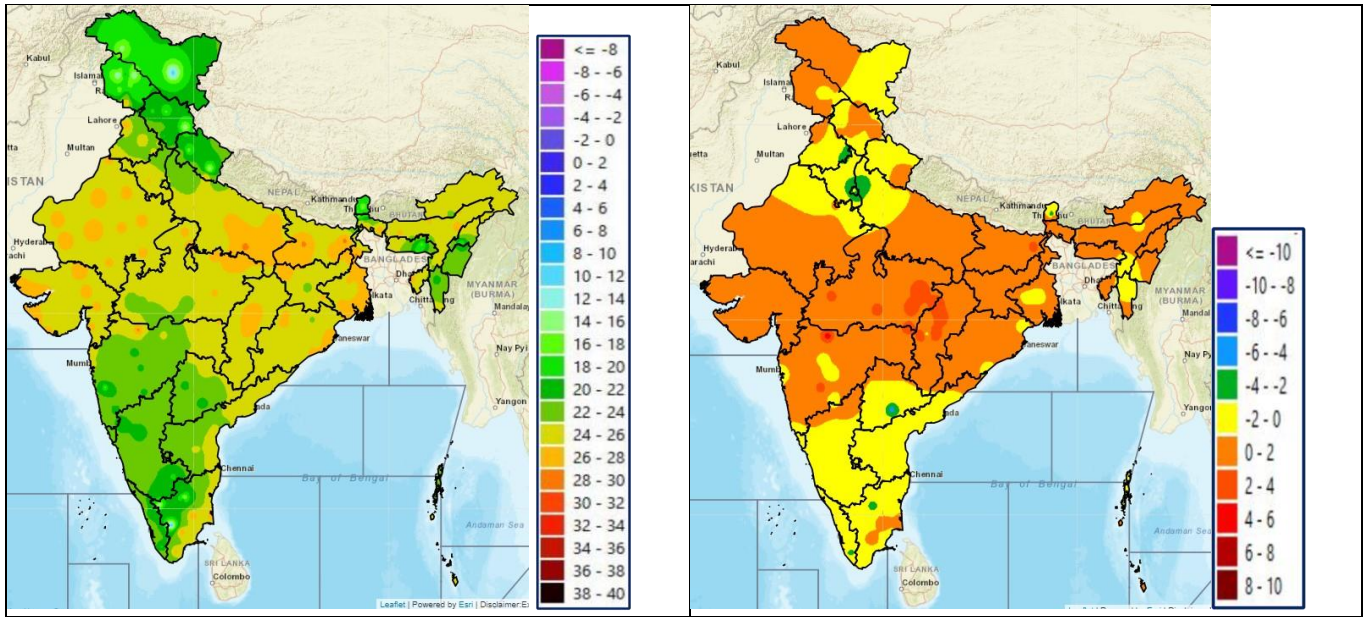


Fig. 3: Minimum Temperatures Dated 26.07.2023

Fig. 4: Departure of Minimum Temp. Dated 26.07.2023

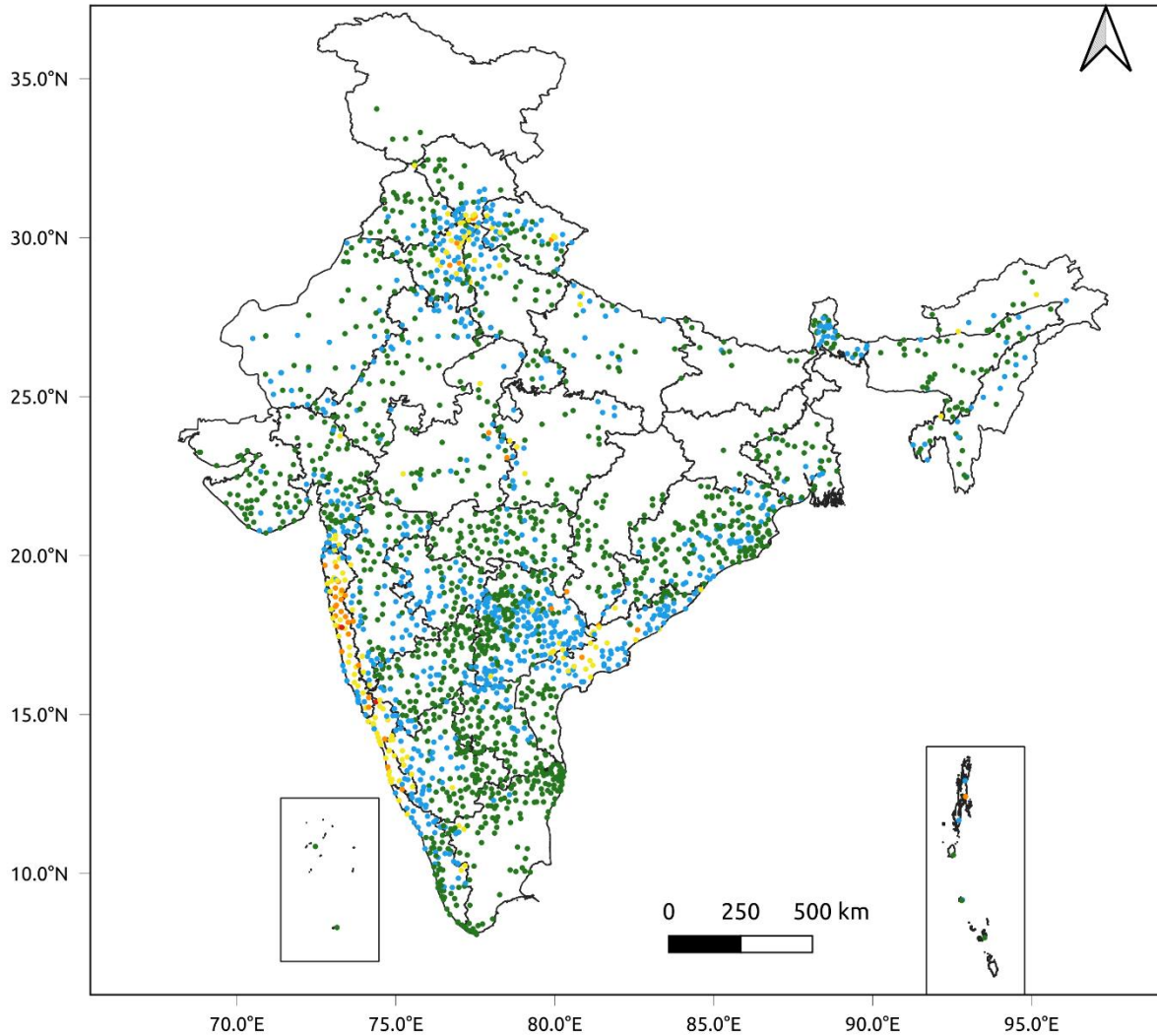


*** Red color warning does not mean "Red Alert" Red color warning means "Take Action".**
Forecast and Warning for any day is valid from 0830 hours IST of day till 0830 hours IST of next day For
more details kindly visit <https://mausam.imd.gov.in> or contact : 011-2434-4599
(Service to the Nation since 1875)

Fig. 5: Accumulated Rainfall (mm) during past 24 hours

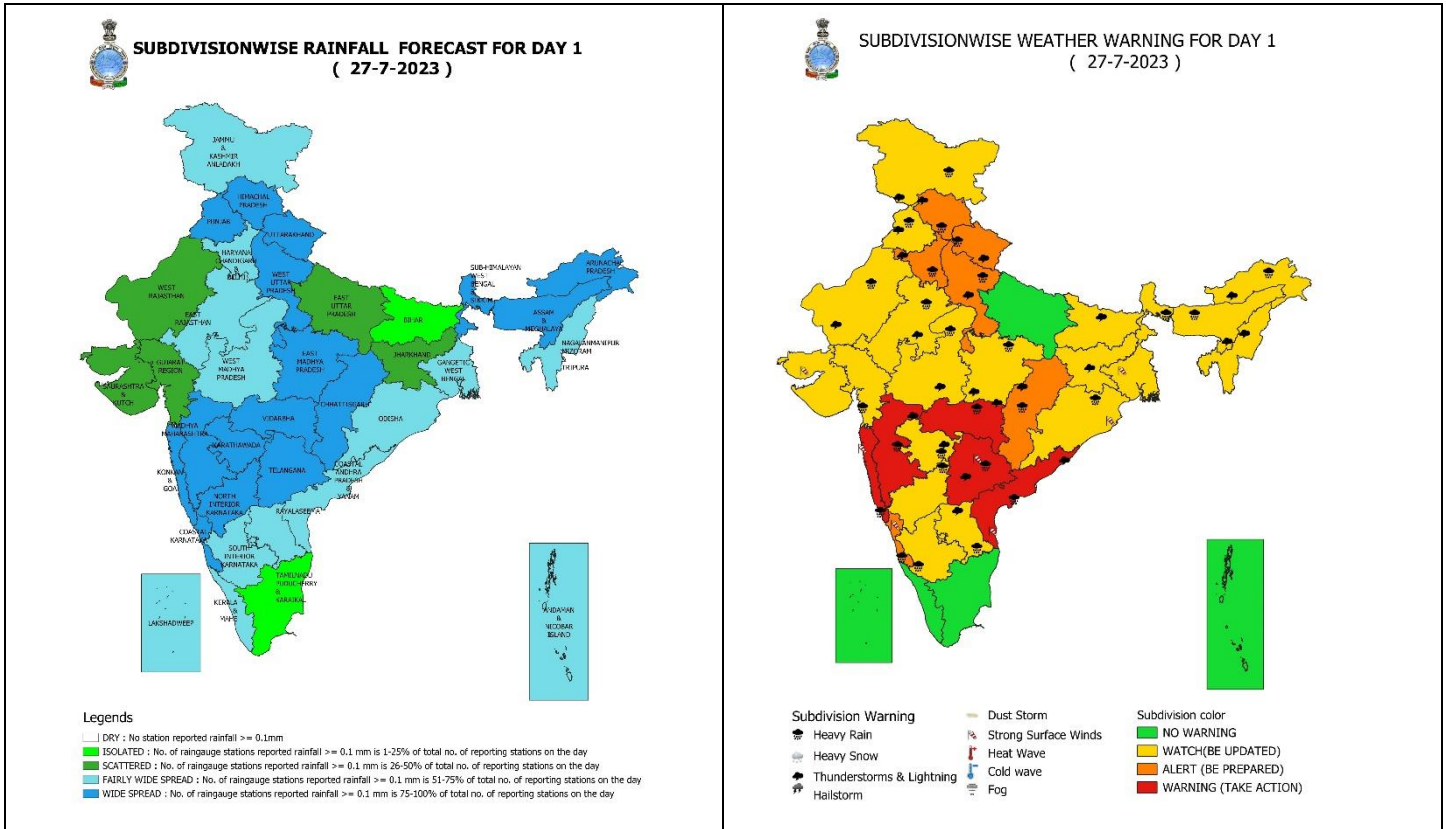


24 Hr cumulative rainfall recorded over different stations during 0830 IST of 25-7-2023 to 0830 IST of 26-7-2023



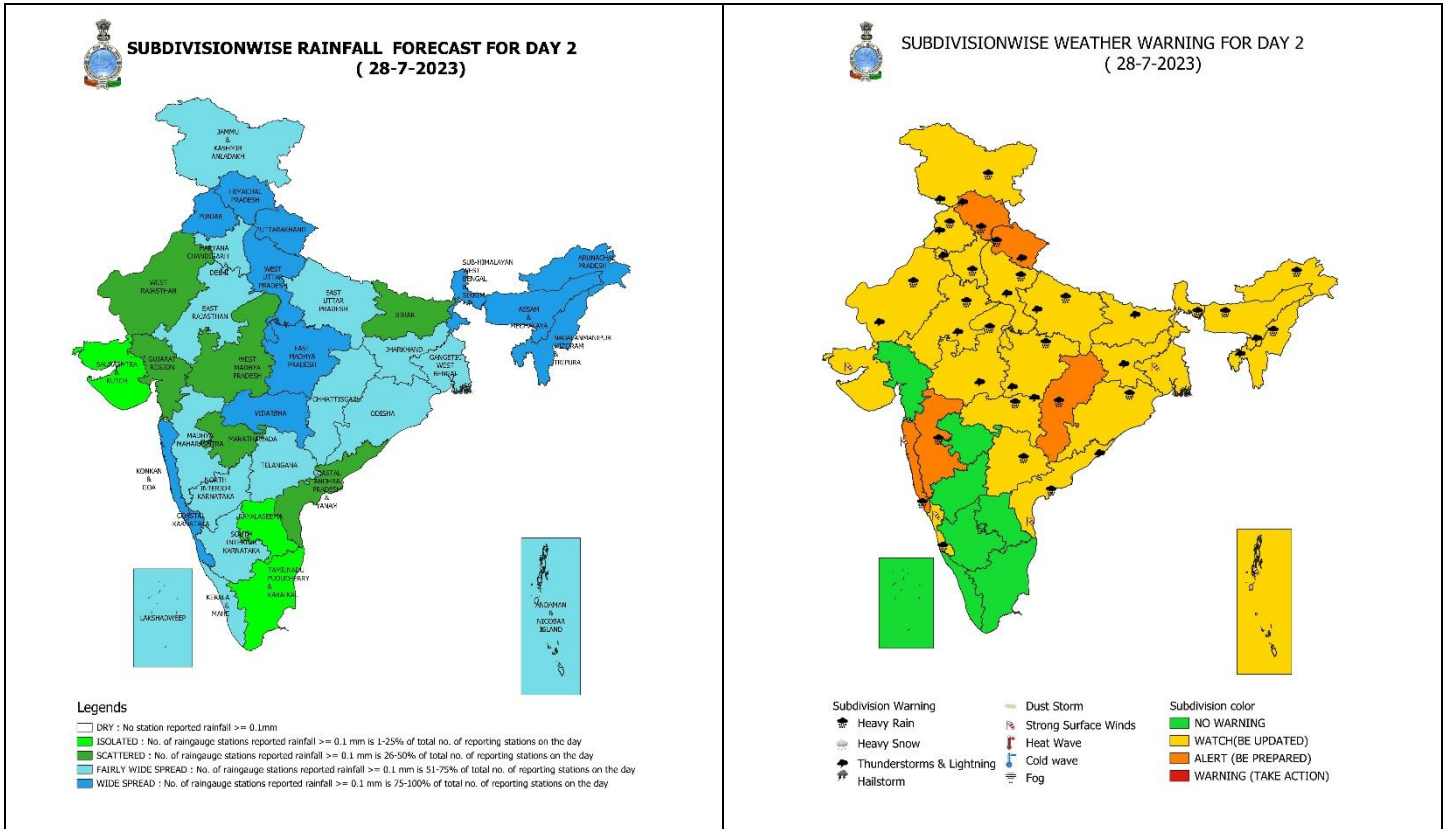
Legends

- Very Light to Light Rainfall (0.1 - 15.5 mm)
- Moderate Rainfall (15.6 - 64.4 mm)
- Heavy Rainfall (64.5 - 115.5 mm)
- Very Heavy Rainfall (115.6 - 204.4 mm)
- Extremely Heavy Rainfall (≥ 204.5 mm)



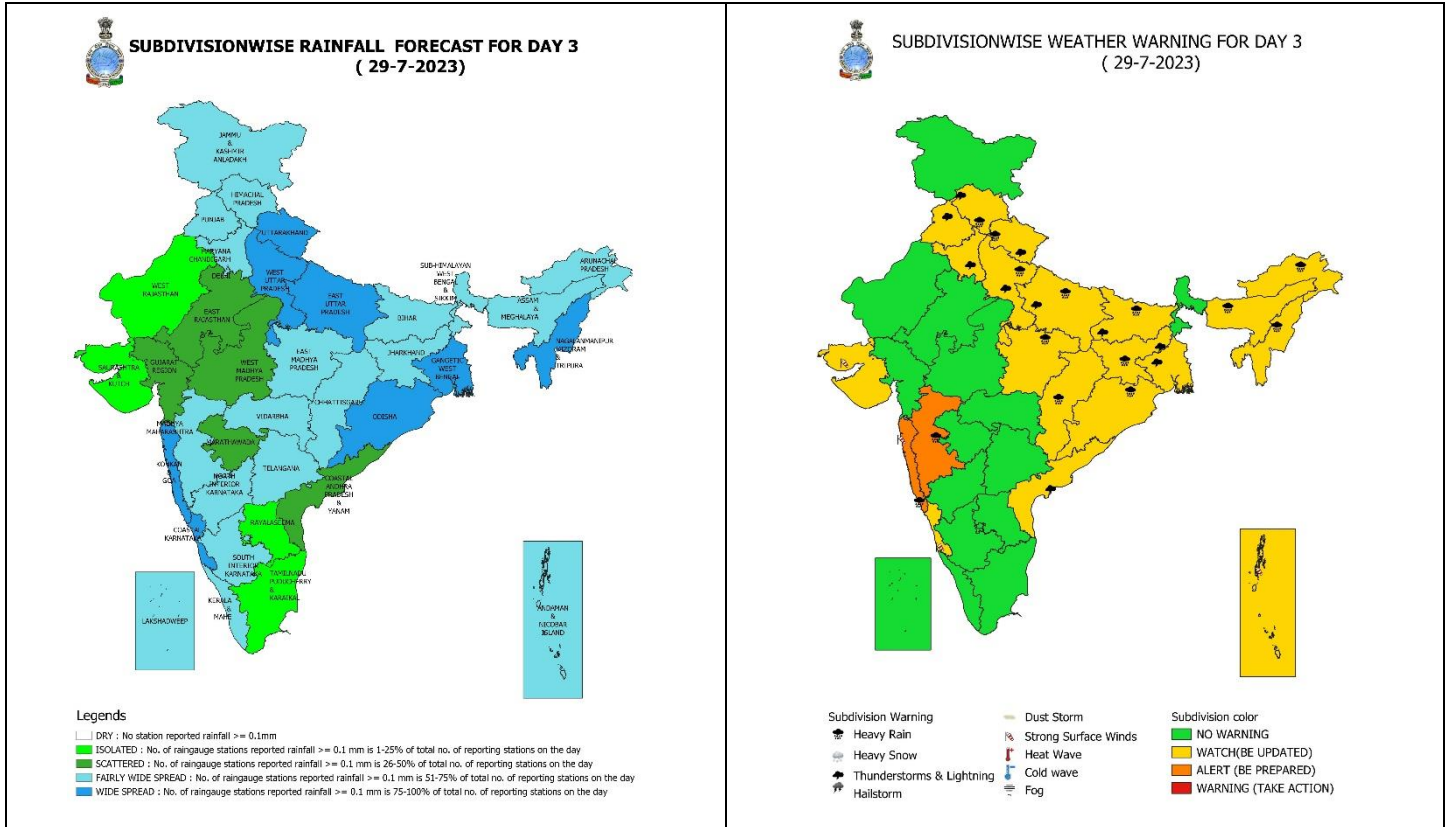
27 July (Day 1):

- ❖ **Heavy to very heavy rainfall with extremely heavy falls** very likely at isolated places over Vidarbha, Konkan & Goa, Ghat areas of Madhya Maharashtra, Coastal Andhra Pradesh & Yanam, Telangana; **Heavy to very heavy rainfall** at isolated places over Himachal Pradesh, Uttarakhand, West Uttar Pradesh, Haryana-Chandigarh-Delhi, Chhattisgarh, Coastal Karnataka; **heavy rainfall** at isolated places over Jammu-Kashmir-Ladakh-Gilgit-Baltistan-Muzaffarabad, Punjab, Haryana-Chandigarh, Rajasthan, Madhya Pradesh, Sub-Himalaya West Bengal & Sikkim, Odisha, Arunachal Pradesh, Assam & Meghalaya, Gujarat Region, Marathwada, Interior Karnataka, Rayalaseema.
- ❖ **Thunderstorm with lightning very likely** at isolated places over Jammu-Kashmir-Ladakh-Gilgit-Baltistan-Muzaffarabad, Himachal Pradesh, Uttarakhand, Punjab, Haryana-Chandigarh-Delhi, West Uttar Pradesh, Rajasthan, Madhya Pradesh, Vidarbha, Chhattisgarh, Nagaland, Manipur, Mizoram & Tripura, Arunachal Pradesh, Assam & Meghalaya, Bihar, Jharkhand, Madhya Maharashtra, Marathwada, Coastal Andhra Pradesh & Yanam, Rayalaseema, Telangana.
- ❖ **Squally wind speed of 45-55 kmph gusting to 65 kmph** over Central & adjoining Southwest Arabian Sea and wind speed reaching 55-65 kmph gusting to 75 kmph over Westcentral & adjoining Southwest Arabian Sea. **Squally weather with wind speed reaching 40-45 kmph gusting to 55 kmph** along & off Gujarat, Maharashtra, Karnataka coasts and Gulf of Mannar. **Squally weather with wind speed reaching 45-55 kmph gusting to 65 kmph** over Westcentral, adjoining Northwest & Eastcentral Bay ay of Bengal and along & off Andhra Pradesh-Odisha-West Bengal coasts and wind speed reaching 40-45 kmph gusting to 55 kmph over Southwest & adjoining Southeast Bay of Bengal. Fishermen are advised not to venture into these areas.



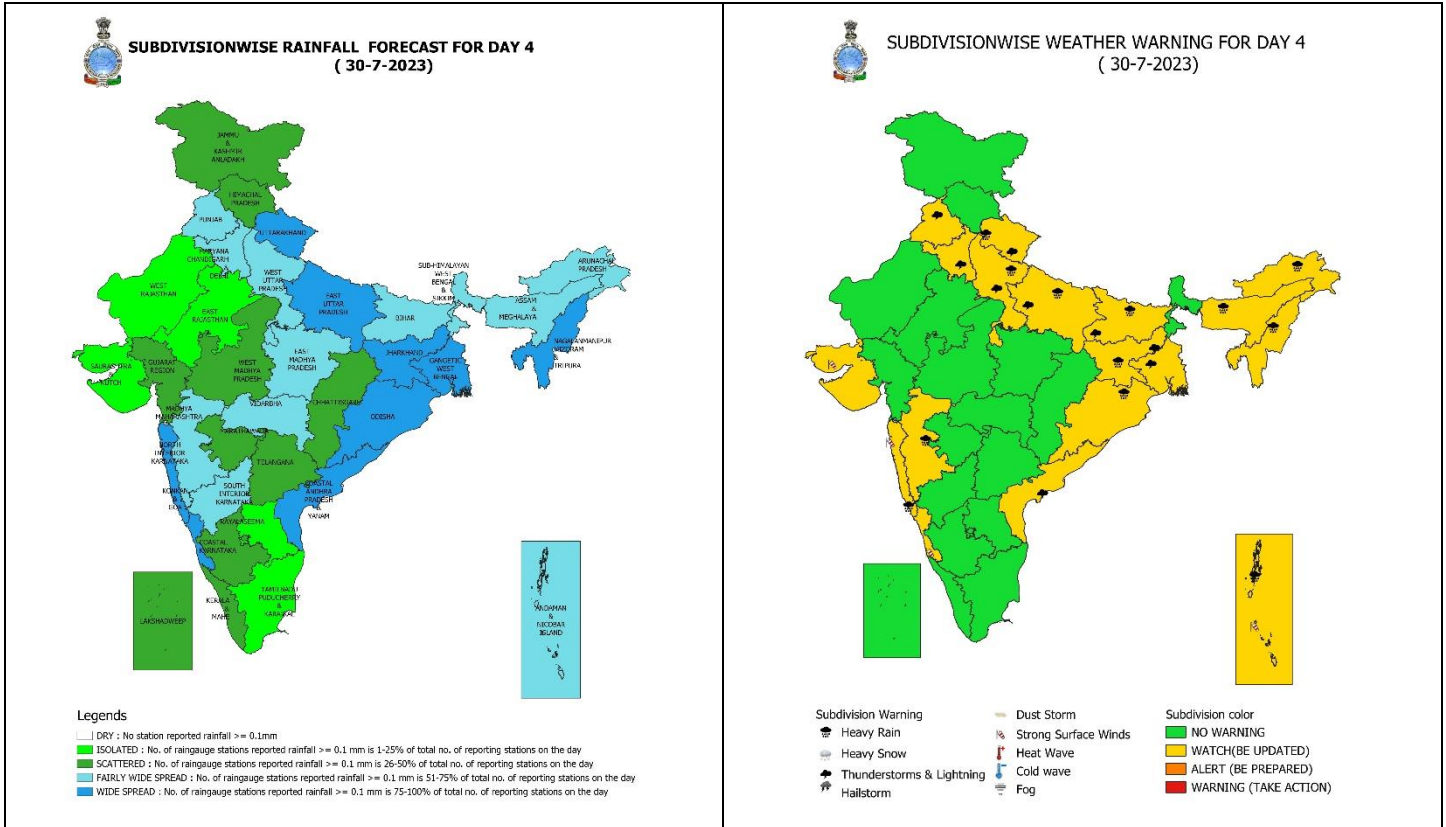
28 July (Day 2):

- ❖ **Heavy to very heavy rainfall** likely at isolated places over Himachal Pradesh. Uttarakhand, Arunachal Pradesh, Assam & Meghalaya, Konkan & Goa, ghat areas of Madhya Maharashtra; **heavy rainfall** at isolated places over Jammu-Kashmir-Ladakh-Gilgit-Baltistan-Muzaffarabad, Punjab, Haryana-Chandigarh-Delhi, Uttar Pradesh, Rajasthan, Madhya Pradesh, Vidarbha, Sub-Himalaya West Bengal & Sikkim, Coastal Andhra Pradesh & Yanam, Nagaland, Manipur, Mizoram & Tripura, Coastal Karnataka and Telangana.
- ❖ **Thunderstorm with lightning very likely** at isolated places over Jammu-Kashmir-Ladakh-Gilgit-Baltistan-Muzaffarabad, Himachal Pradesh, Uttarakhand, Punjab, Haryana-Chandigarh-Delhi, Uttar Pradesh, Rajasthan, Madhya Pradesh, Vidarbha, Nagaland, Manipur, Mizoram & Tripura, Assam & Meghalaya, Bihar, Jharkhand, Coastal Andhra Pradesh & Yanam, Telangana.
- ❖ **Squally wind speed of 45-55 kmph gusting to 65 kmph** over Central & adjoining Southwest Arabian Sea and wind speed reaching 55-65 kmph gusting to 75 kmph over Westcentral & adjoining Southwest Arabian Sea. **Squally weather with wind speed reaching 40-45 kmph gusting to 55 kmph** along & off south Gujarat, Maharashtra, Karnataka coasts and Gulf of Mannar. **Squally weather with wind speed reaching 45-55 kmph gusting to 65 kmph** over Westcentral, adjoining Northwest & Eastcentral Bay ay of Bengal and along & off Andhra Pradesh-Odisha-West Bengal coasts and wind speed reaching 40-45 kmph gusting to 55 kmph over Southwest & adjoining Southeast Bay of Bengal and Andaman Sea. Fishermen are advised not to venture into these areas.



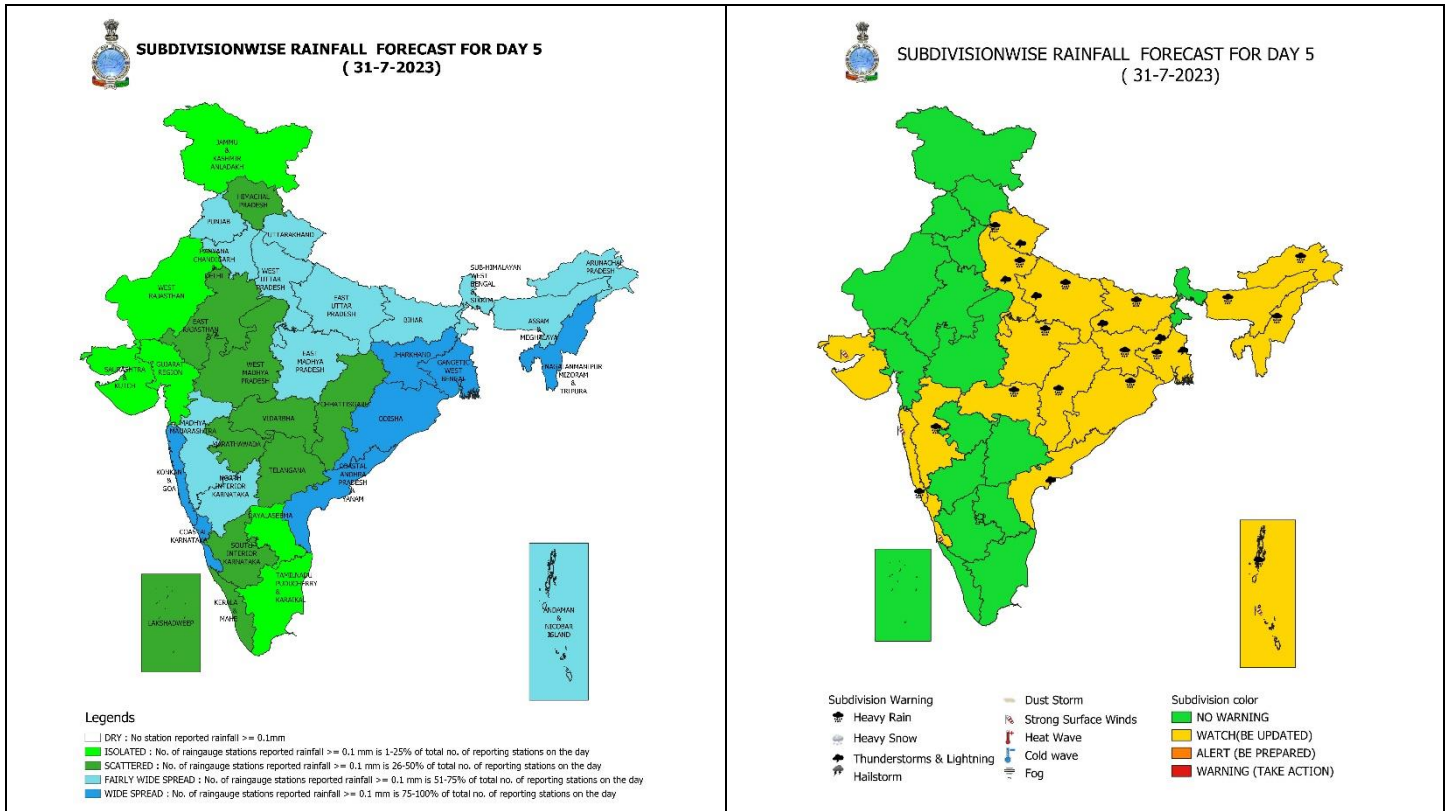
29 July (Day 3):

- ❖ **Heavy to very heavy rainfall** likely at isolated places over Konkan & Goa, ghat areas of Madhya Maharashtra; **heavy rainfall** at isolated places over Himachal Pradesh, Uttarakhand, Uttar Pradesh, East Madhya Pradesh, Chhattisgarh, Bihar, Jharkhand, Assam & Meghalaya, Arunachal Pradesh, Nagaland, Manipur, Mizoram & Tripura.
- ❖ **Thunderstorm with lightning very likely** at isolated places over Himachal Pradesh, Uttarakhand, Punjab, Haryana-Chandigarh-Delhi, Uttar Pradesh, Gangetic West Bengal, Bihar, Jharkhand, Coastal Andhra Pradesh & Yanam, Telangana.
- ❖ **Squally wind speed of 45-55 kmph gusting to 65 kmph** over Central & adjoining Southwest Arabian Sea and wind speed reaching 55-65 kmph gusting to 75 kmph over Westcentral & adjoining Southwest Arabian Sea. **Squally weather with wind speed reaching 40-45 kmph gusting to 55 kmph** along & off south Gujarat, Maharashtra, Karnataka coasts and Gulf of Mannar. **Squally weather with wind speed reaching 45-55 kmph gusting to 65 kmph** over Westcentral, adjoining Northwest & Eastcentral Bay of Bengal and wind speed reaching 40-45 kmph gusting to 55 kmph over Southwest & adjoining Southeast Bay of Bengal and Andaman Sea. Fishermen are advised not to venture into these areas.



30 July (Day 4):

- ❖ **Heavy rainfall** likely at isolated places over Uttarakhand, Uttar Pradesh, Andaman & Nicobar Islands, Bihar, Jharkhand, Arunachal Pradesh, Assam & Meghalaya, Nagaland, Manipur, Mizoram & Tripura, Konkan & Goa, Madhya Maharashtra.
- ❖ **Thunderstorm with lightning very likely** at isolated places over Uttarakhand, Punjab, Haryana-Chandigarh-Delhi, Uttar Pradesh, Gangetic West Bengal, Bihar, Jharkhand, Coastal Andhra Pradesh & Yanam.
- ❖ **Squally wind speed of 45-55 kmph gusting to 65 kmph** over Central & adjoining Southwest Arabian Sea and wind speed reaching 55-65 kmph gusting to 75 kmph over Westcentral & adjoining Southwest Arabian Sea. **Squally weather with wind speed reaching 40-45 kmph gusting to 55 kmph** along & off south Gujarat, Maharashtra, Karnataka coasts and Gulf of Mannar. **Squally weather with wind speed reaching 45-55 kmph gusting to 65 kmph** over Westcentral, adjoining Northwest & Eastcentral Bay ay of Bengal and wind speed reaching 40-45 kmph gusting to 55 kmph over Southwest & adjoining Southeast Bay of Bengal and Andaman Sea. Fishermen are advised not to venture into these areas.



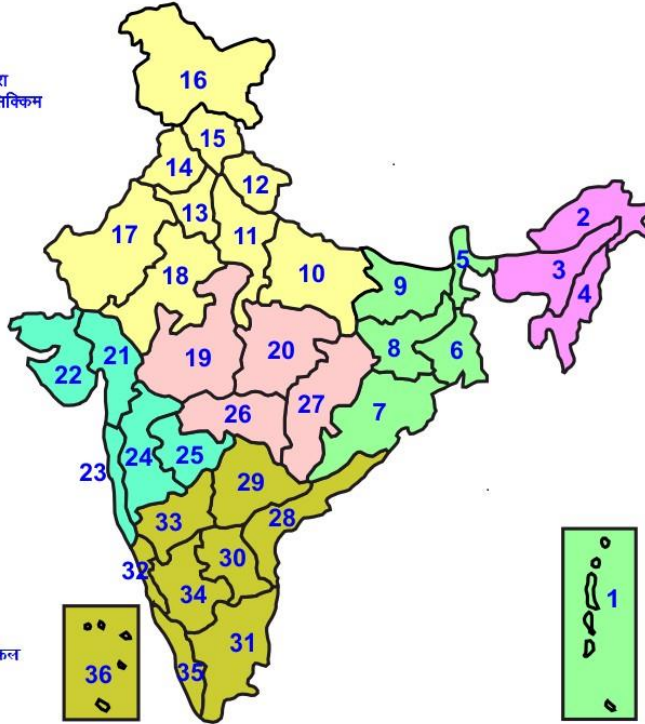
31 July (Day 5):

- ❖ **Heavy rainfall** likely at isolated places over Uttarakhand, Uttar Pradesh, East Madhya Pradesh, Andaman & Nicobar Islands, Bihar, Jharkhand, Gangetic West Bengal, Arunachal Pradesh, Assam & Meghalaya, Nagaland, Manipur, Mizoram & Tripura, Konkan & Goa, Madhya Maharashtra, Vidarbha and Chhattisgarh.
- ❖ **Thunderstorm with lightning very likely** at isolated places over Uttarakhand, Uttar Pradesh, Gangetic West Bengal, Bihar, Jharkhand, Coastal Andhra Pradesh & Yanam.
- ❖ **Squally wind speed of 45-55 kmph gusting to 65 kmph** over Central & adjoining Southwest Arabian Sea and wind speed reaching 55-65 kmph gusting to 75 kmph over Westcentral & adjoining Southwest Arabian Sea. **Squally weather with wind speed reaching 40-45 kmph gusting to 55 kmph** along & off south Gujarat, Maharashtra, Karnataka coasts and Gulf of Mannar. **Squally weather with wind speed reaching 45-55 kmph gusting to 65 kmph** over Westcentral, adjoining Northwest & Eastcentral Bay of Bengal and wind speed reaching 40-45 kmph gusting to 55 kmph over Southwest & adjoining Southeast Bay of Bengal and Andaman Sea. Fishermen are advised not to venture into these areas.



LEGENDS

- 1 अंडमान और निकोबार द्वीप समुह
- 2 अरुणाचल प्रदेश
- 3 असम और मेघालय
- 4 नागालैंड मनीपुर मीजोरम और त्रिपुरा
- 5 उप हिमालय पश्चिम बंगाल एवं सिक्किम
- 6 पश्चिम गंगेय बंगाल
- 7 ओडिशा
- 8 झारखंड
- 9 बिहार
- 10 पूर्वी उत्तर प्रदेश
- 11 पश्चिम उत्तर प्रदेश
- 12 उत्तराखंड
- 13 हरियाणा चंडिगढ़ एवं दिल्ली
- 14 पंजाब
- 15 हिमाचल प्रदेश
- 16 जम्मू एवं कश्मीर एवं लद्दाख
- 17 पश्चिम राजस्थान
- 18 पूर्वी राजस्थान
- 19 पश्चिम मध्य प्रदेश
- 20 पूर्वी मध्य प्रदेश
- 21 गुजरात क्षेत्र
- 22 सौराष्ट्र एवं कच्छ
- 23 कोंकण एवं गोवा
- 24 मध्य महाराष्ट्र
- 25 मराठावाड़ा
- 26 विदर्भ
- 27 छत्तीसगढ़
- 28 तटीय आंध्र प्रदेश एवं यनम
- 29 तेलंगाना
- 30 रायलसीमा
- 31 तमिलनाडु, पुदुचेरी एवं कराईकल
- 32 तटिय कर्नाटक
- 33 आंतरिक उत्तरी कर्नाटक
- 34 आंतरिक दक्षिणी कर्नाटक
- 35 केरल एवं माहे
- 36 लक्षद्वीप



1. Andaman & Nicobar Islands
2. Arunachal Pradesh
3. Assam & Meghalaya
4. Nagaland, Manipur, Mizoram & Tripura
5. Sub-Himalayan West Bengal & Sikkim
6. Gangetic West Bengal
7. Orissa
8. Jharkhand
9. Bihar
10. East Uttar Pradesh
11. West Uttar Pradesh
12. Uttarakhand
13. Haryana, Chd & Delhi
14. Punjab
15. Himachal Pradesh
16. Jammu & Kashmir and Ladakh
17. West Rajasthan
18. East Rajasthan
19. West Madhya Pradesh
20. East Madhya Pradesh
21. Gujarat
22. Saurashtra
23. Konkan & Goa
24. Madhya Maharashtra
25. Marathawada
26. Vidharbha
27. Chhattisgarh
28. Coastal Andhra Pradesh & Yanam
29. Telangana
30. Rayalaseema
31. Tamilnadu, Puducherry & Karaikal
32. Coastal Karnataka
33. North Interior Karnataka
34. South Interior Karnataka
35. Kerala & Mahe
36. Lakshadweep

SPATIAL DISTRIBUTION (% of Stations reporting)

% Stations	Category	% Stations	Category
76-100	Widespread (WS/ Most Places)	26-50	Scattered (SCT/ A Few Places)
51-75	Fairly Widespread (FWS/ Many Places)	1-25	Isolated (ISOL)

WARNING

WARNING (TAKE ACTION)
ALERT (BE PREPARED)
WATCH (BE UPDATED)
NO WARNING (NO ACTION)

Probabilistic Forecast

Terms	Probability of Occurrence (%)
Unlikely	< 25
Likely	25 - 50
Very Likely	50 - 75
Most Likely	> 75



Heavy Rain



Heavy Snow



Thunderstorm



Dust Storm



Strong Winds



Visibility



Cyclone



Squall/ Hail



Frost



Cold Wave



Heat Wave



Sea State

* Red color warning does not mean "Red Alert" Red color warning means "Take Action".

Forecast and Warning for any day is valid from 0830 hours IST of day till 0830 hours IST of next day For more details kindly visit <https://mausam.imd.gov.in> or contact : 011-2434-4599

(Service to the Nation since 1875)

LEGENDS

WARNING

WARNING (TAKE ACTION)
ALERT (BE PREPARED)
WATCH (BE UPDATED)
NO WARNING (NO ACTION)

Probabilistic Forecast

Terms	Probability of Occurrence (%)
Unlikely	< 25
Likely	25 - 50
Very Likely	50 - 75
Most Likely	> 75



Rain/ Snow *

Heavy: 64.5 to 115.5 mm/cm *
Very Heavy: 115.6 to 204.4 mm/cm*
Extremely Heavy: > 204.4 mm/cm *



Heat Wave

When maximum temperature of a station reaches $\geq 40^{\circ}\text{C}$ for plains and $\geq 30^{\circ}\text{C}$ for hilly regions
(a) Based on Departure from normal

Heat Wave: Maximum Temperature Departure from normal 4.5°C to 6.4°C .
Severe Heat Wave: Maximum Temperature Departure from normal $\geq 6.5^{\circ}\text{C}$

(b). Based on Actual maximum temperature

Heat Wave: When actual maximum temperature $\geq 45^{\circ}\text{C}$.
Severe Heat Wave: When actual maximum temperature $\geq 47^{\circ}\text{C}$

(c). Criteria for heat wave for coastal stations

When maximum temperature departure is $> 4.5^{\circ}\text{C}$ from normal. Heat Wave may be described provided maximum temperature $\geq 37^{\circ}\text{C}$



Warm Night

When maximum temperature remains 40°C

Warm Night: When minimum temperature departure 4.5°C to 6.4°C .
Severe Warm Night: When minimum temperature departure $> 6.4^{\circ}\text{C}$.



Cold Wave

When minimum temperature of a station $\leq 10^{\circ}\text{C}$ for plains and $\leq 0^{\circ}\text{C}$ for hilly regions.

(a). Based on departure

Cold Wave: Minimum Temperature Departure from normal -4.5°C to -6.4°C .
Severe Cold Wave: Minimum Temperature Departure from normal $\leq -6.5^{\circ}\text{C}$

(b) Based on actual Minimum Temperature (for Plains only)

Cold Wave : When Minimum Temperature is $\leq 4.0^{\circ}\text{C}$
Severe Cold Wave: When Minimum Temperature is $\leq 2.0^{\circ}\text{C}$

(c) For Coastal Stations

When Minimum Temperature departure is $\leq -4.5^{\circ}\text{C}$ & actual Minimum Temperature is $\leq 15^{\circ}\text{C}$



Cold Day

When minimum temperature of a station $\leq 10^{\circ}\text{C}$ for plains and $\leq 0^{\circ}\text{C}$ for hilly regions
Based on departure

Cold Day: Maximum Temperature Departure from normal -4.5°C to -6.4°C .
Severe Cold Day: Maximum Temperature Departure from normal $\leq -6.5^{\circ}\text{C}$



Fog

Phenomenon of small droplets suspended in air and the horizontal visibility $< 1\text{km}$

Moderate Fog: When the visibility between 500-200 metres
Dense Fog: when the visibility between 50- 200 metres
Very Dense Fog: when the visibility < 50 metres



Thunderstorm

Sudden electrical discharges manifested by a flash of light (Lightning) and a sharp rumbling sound (thunder)



Dust/Sand Storm

An ensemble of particles of dust or sand energetically lifted to great heights by a strong and turbulent wind.



Frost

Ice deposits on ground

Air temperature $\leq 4^{\circ}\text{C}$ (over Plains)



Squall

A strong wind that rises suddenly, lasts for atleast 1 minute.

Moderate: Wind speed 52-61 kmph
Severe: Wind speed 62-87 kmph
Very Severe: Wind speed > 87 kmph



Sea State

Effect of various waves in the sea over specific area

Rough to very rough: Wind speed 41-62 kmph (22-33 knots) & Wave height 2.5-6 metre
High to very high: Wind speed 63-117 kmph (34-63 knots) & Wave height 6-14 metre
Phenomenal: Wind speed > 117 kmph (> 63 knots) & Wave height > 14 metre



Cyclone

Cyclonic Storm: Wind speed 62-87 kmph (34-47 knots)
Severe Cyclonic Storm: Wind speed 88-117 kmph (48-63 knots)
Very Severe Cyclonic Storm: Wind speed 118-165 kmph (64 - 89 knots)
Extremely Severe Cyclonic Storm: Wind speed 166-220 kmph (90 -119 knots)
Super Cyclone Strom: Wind speed > 220 kmph (> 119 knots)

* Red color warning does not mean "Red Alert" Red color warning means "Take Action".

Forecast and Warning for any day is valid from 0830 hours IST of day till 0830 hours IST of next day For more details kindly visit <https://mausam.imd.gov.in> or contact : 011-2434-4599

(Service to the Nation since 1875)